

THE CHICAGO INDUSTRIAL CHESS LEAGUE BULLETIN

"In an age when training in orderly and imaginative thinking and in scientific development means so much to our national survival and prosperity, there is an important role in store for an expanded interest in the playing of chess. Additionally, chess can play a useful role in our growing problem of leisure time, as a stimulating activity for our aging population; and I venture to suggest, in our training and guidance programs for an all too-troubled American youth."

Hon. Herbert Zelenko - Representative
(from N.Y.) of the House in Proceedings
of 85th Congress

Holiday Havoc. Three of the four December matches were played with more lopsided results. The Argonne-Donnelley match was postponed until January 4th. The current leaders are Western Electric, 5-0; Stewart Warner, 3-2; and The Lakeside Press, 2½-1½. The Bank-Motorola "clash" turned into a sickening flop. The Bank, unable to raise more than four chess players, decided not to go through with the match thus handing Motorola 8 easy tie-breaking points while depriving the opposition of the enjoyment of playing some chess. The other chess results are as follows:

Stewart Warner 6½

1. Bakulcius	drew with
2. Z. Swedak	beat
3. Claude Luth	beat
4. Bob Soriano	lost to
5. O. Sullan	beat
6. Henry Leonik	beat
7. Hord	won
8. Curtis	won

1st National Bank 1½

K. Salkauskas
Rinaldo Tiranti
Carl Reichstetter
Matt Balciunas
Don McCluskey
W. Conway
Forfeit
Forfeit

Western Electric 6

1. Jim Warren	beat
2. Les Meyers	lost to
3. Will Hammerschmidt	beat
4. Walter Elliott	beat
5. Tony Vikrikas	beat
6. Erwin Rito	beat
7. Paul Elarde	lost to
8. H. Serdoz	beat

Ill. Bell Telephone 2

Ed Assmann
Bob Rachaitis
Gerry Biester
D. C. Green
Karl Selander
Ray Lauth
Geo. Unruh
Joe Costello

Kirby Cleans Up in Simultaneous. On Dec. 2nd Roblon Kirby, the 22 year old chess master from the U. of C., demonstrated his ability very convincingly to 11 members of our League. He beat all 11, some twice in succession. The attendance at the affair, consisting of 5 Bank members, 6 Donnelley players, and two spectators, was pathetic.

Is the Eight-Man Team too Big? A complaint has reached me that the matter of team size in our League has not been brought up for discussion this year. (The 8-man team size was last discussed and agreed to in August of 1959.) From the beginning of our League the idea of maximum participation has been our general policy. The 8-man team size seemed to make it possible for a large total number of players to take part in League competition without unduly hurting individual teams. Now is a good time to examine this premise and decide if we should maintain this team size. The main argument against the 8-man team is that smaller clubs have a greater incidence of forfeits and thus cannot compete on a fair basis with the large clubs which can always field a full team. In recent years, the following forfeit problems were experienced:

THE CHICAGO INDUSTRIAL CHESS LEAGUE BULLETIN

Number of Forfeits Recorded

	'58-'59 <u>12 matches</u>	'59-'60 <u>10 matches</u>	'60 <u>5 matches</u>
Bank	11*	4	14**
Bell	1	4	4
Stewart Warner	2	3	4***
Donnelley	5	1	0
Motorola	1	0	0
Western	0	0	0
Argonne	-	-	0

* This occurred in a period when 2 regulars, Hagen and Wilson, were lost. They have since been replaced by Balciunas and Salkauskas. Seven of these forfeits took place in a single match.

** This seems to be due largely to the absence this year of 2 regulars, Mann and Haenflein and also to the Motorola fiasco.

*** This is apparently due to the loss of Beitler and Lombardi and the inactivity of Campbell, Peterson, and Malhosky.

The preceding data indicate that the Bank, Bell and Stewart Warner are the only teams now troubled by forfeits. I would like some discussion of this situation at our business meeting next month.

C.I.C.L. Joins G.C.C.L. After considerable investigation and negotiation a letter requesting membership in The Greater Chicago Chess League and a check of \$10 have been submitted to Ed Buerger, Pres., and John Tums, Sec'y-Treas. of the senior League. It is assumed that we will be accepted into the G.C.C.L. 6-man team schedule which begins Jan. 6, 1961 and includes one game against each of the following:

Austin C.C. Central & Lake
 Evanston C.C. Evanston Community Art Center
 Univ. of Chic. C. C. 1005 E. 60th St.
 Latvian C.C. 4146 N. Elston Ave.
 (Ukrainian) Lions C.C. 2410 W. Chicago Ave.
 (Polish) Eagles C.C. 1340 N. Ashland Ave.
 Knight Klub 5917 S. Pulaski Rd.

Half the games will be played at home (RRD, Motorola, or the Bank) and the rest away. All games are played at 40 moves in 2 hours with arrangements for sealed moves and adjournments if required. As soon as more information on League rules and schedule is received, it will be forwarded to the All-League team members. Anyone interested in joining this composite team who has not already shown interest is invited to contact me and get his name on our roster.

THE CHICAGO INDUSTRIAL CHESS LEAGUE BULLETIN

Sunbeam Ready to Join League. Mr. John Koller of the Sunbeam Corporation has requested that the Sunbeam C.C. be admitted into our League. Sunbeam is located at 5600 W. 12th St. Their club meets every other Tues. and has sufficient membership to support an 8-man team. If we are to include a Sunbeam team in our 1961 schedule, it seems appropriate to add them in time for the second round beginning in February. In order to act on Mr. Koller's request a League business meeting will be held on Tues., Jan. 24th at the 1st National Bank, Monroe & Dearborn. The meeting will begin promptly at 6:15 P.M. and will be held in the 18th floor lounge.

Each club is invited to send one or two representatives to the meeting. Other matters discussed will be trophies and the annual banquet.

*A Very Happy and Successful new year
to you all!*

Protos

Jim Protos, Chairman
The Chicago Industrial Chess League

December 1, 1960

THE LAKESIDE PRESS CHESS CLUB

Dear Team Member:

have

The past two weeks ~~has~~ seen our Club continue to maintain its hold on 2nd Place in Chicago Industrial Chess League standings with a well-administered 6-2 triumph over Illinois Bell and a heroic 4-4 draw with Motorola. Thus far we have garnered 18½ match points out of a possible total of 32 for a .567 batting average. Despite our 2nd Place standing, this is not a particularly impressive performance for a team as potentially strong as ours. Its just that the other teams are doing worse. The drawn match with Motorola was, of course, unexpected. We had a strong team out, and, I may say, a better team. It was simply one of those nights where several of our players were off their stride. If it had not been for Jim Brotsos' heroic stand in a losing game at the 4th Board against Motorola, we would have lost the match. Jim drew the game and the match after being the Exchange and two Pawns down at one point against a tough and dangerous opponent. Kudos must also go to C.B. Herschberger whose excellent judgment at the First Board against Goncharoff preserved a draw in what could have been a lost game with reckless play. Following are scores of both matches:

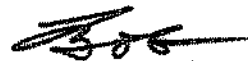
ILLINOIS BELL

Holder	- 0	1 - Asmann
Sechler	- 1	0 - Streit
Brotsos	- 1	0 - Selander
Moeller	- 1	0 - Riester
Mayer	- 1	0 - Uhruh
Ross	- 0	1 - Green
Smith	- 1	0 - Jaeger
Galvin	- 1	0 - Desplenter
	<u>6 - 2</u>	

MOTOROLA

Herschberger	- ½	½ - Goncharoff
Holder	- 0	1 - Lazarevich
Sechler	- 0	1 - Whitman
Brotsos	- ½	½ - Kuritsa
Moeller	- 1	0 - Cohen
Mayer	- 0	1 - Neumark
Smith	- 1	0 - Curry
Galvin	- 1	0 - Bomhof
	<u>4 - 4</u>	

Our next match is against Argonne National Labs on Friday, December 16, to be played (as per League stipulation) at Western Electric. We must have all of our top team talent available for this match, as Argonne is a strong team and definitely out to take away our Second Place standing. Are we going to let 'em? Say NO!!! by filling in the form below and mailing it to me right away.

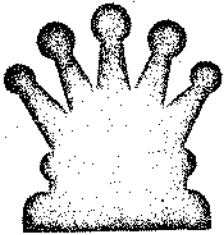


Bob Moeller
Team Captain, 1-D-10, ext. 627

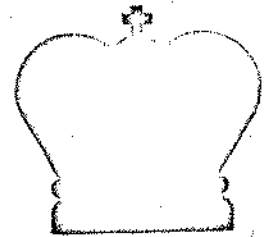
_____ I can play in the Argonne match, Friday, December 16. Count on me.

_____ Put me down to play now, and I will confirm later.

Signed _____



THE
HAWTHORNE
CHESS & CHECKER CLUB



BULLETIN NO. 4

December 1, 1960

This being the last bulletin of the old year, the officers of the Chess and Checker Club wish all members of our Club a "Merry Christmas" and a "Happy New Year."

Will Hammerschmidt

Will Hammerschmidt
President

Dan Kumro

Dan Kumro
Vice President

Ken Dopheide

Ken Dopheide
Secretary, Treasurer

RESHEVSKY EXHIBITION

International Grand Master and World Champion of the west, Samuel Reshevsky, has been invited for a simultaneous chess exhibition. Those wishing to participate in this event, make reservations now as boards are limited.

KIRBY EXHIBITION

Second ranked chess master in Chicago, Robion Kirby, will hold a simultaneous exhibition December 2, 1960. Time: 6:30 P.M., Place: 18th Floor Lounge, The 1st National Bank of Chicago, 35 South Clark. No charge for C.I.C.L. members.

10 SECOND "SPEED" TOURNAMENT

The winner of the first 10 second speed tournament held on November 11, 1960, was W. Hammerschmidt with three points. The runner up was Jerry Fajkus with two points, and Ulo Tamm came in third scoring one point.

The next speed tournament is scheduled for Friday, December 16, 1960, at 7:00 P.M.

AWARDS FOR THE 1960-61 SEASON

Trophies for first and second place in each double round-robin class tournament will be awarded to the winners at the end of the season. The winner of each 10 second speed tournament receives a pocket chess set, except if he has received one at a previous speed tournament. The next lower position will then win the set. The player with the highest accumulated score points at the end of the season will also receive a trophy.

INDUSTRIAL LEAGUE RESULTS

The Hawthorne team won the match against Stewart Warner Company on November 15th with a respectable 7:1 score making it the 4th straight win in a row.

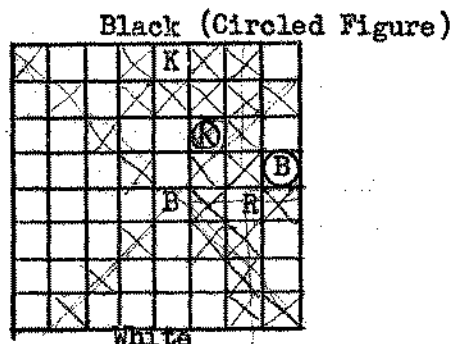
The December match is on Wednesday the 7th at the Illinois Bell Telephone Company, 208 West Washington Street. The match starts at 6:30 P.M.

THE "SHERLOCK HOLMES" PROBLEM

This is the position after the black king fell from the board. Sherlock Holmes entered the room, picked up the king from the floor and put it back on the board on the only square possible (according to the rules of chess). Can you see where the black king belongs? (It is white to move.) Solution in the next bulletin.

Solution of the last problem:

- (1) P-KB7.....KxN (Forced)
- (2) P-KB8 (Knight) Mate

CHICAGO INDUSTRIAL CHESS LEAGUE STANDING

	<u>W.</u>	<u>L.</u>	<u>D.</u>
Western Electric	4	-	-
Argonne Nat. Laboratory	2	1	-
R.R. Donnelly & Sons Company	2	1	-
First National Bank	1	2	-
Stewart Warner	2	2	-
Motorola Inc.	-	2	1
Illinois Bell Telephone Company	-	3	1

CLASS TOURNAMENT STANDINGS

Class "B" players make following correction: Jerry Fajkus' new department number is 13, phone number 293-6566. Please notify the officers of any change in your department or phone number.

<u>Class "A"</u>	<u>W.</u>	<u>L.</u>	<u>D.</u>	<u>Class "B"</u>	<u>W.</u>	<u>L.</u>	<u>D.</u>
J. Norlock	3	-	-	J. Fajkus	6	-	-
W. Hammerschmidt	1	-	-	L. Schriener	5	1	-
W. Elliott	3	1	1	K. Dopheide	4	1	-
D. Kumro	1	1	1	E. Espe	4	2	-
C. Olsen	-	2	-	J. Traeger	4	2	1
T. Vikrikas	-	2	-	W. Kastning	2	2	-
H. Wettersten	-	2	-	R. Berry	1	3	-
				M. Robaszewski	1	4	-
				J. Parker	-	2	1
				J. Sula	-	2	-
				W. Braham	-	2	-
				R. Broniarczyk	-	2	-
				U. Tamm	-	4	-

<u>Class "C"</u>	<u>W.</u>	<u>L.</u>
G. Wallenbecker	4	-
W. Scheck	2	-
L. Wilburn	1	-
F. Shriner	7	1
R. Rook	3	1
N. Knol	1	1
G. Mulholland	1	1
C. Drwal	1	2
E. Mendrick	1	4
G. Bandik	-	1
L. Giels	-	2
E. Kirn	-	8