



THE
HAWTHORNE
CHESS & CHECKER CLUB



BULLETIN NO. 5

February 1, 1961

RESHEVSKY EXHIBITION

Samuel Reshevsky, now on his transcontinental tour, has scheduled his performance at Hawthorne for Tuesday, February 14th at 6:30 P.M. in the Albright Gymnasium, second floor.

Players who compete against the International Grandmaster are requested to bring their own sets.

There are no tickets required to kibitz this event.

CHICAGO INDUSTRIAL LEAGUE RESULTS

A fine turn out was present for the match between Hawthorne and Argonne National Laboratory on January 13th. Sixteen players battled on each side doing their best for the team. The match ended in a draw. The first eight boards which counted for the team were tied four to four; the remaining eight boards counting for the club ended with the same result.

The longest game which was played without a timing clock was finally won by Jerry Fajkus at 1:15 A.M.

It was a very pleasant and enjoyable evening.

LEAGUE STANDINGS

	<u>W.</u>	<u>L.</u>	<u>D.</u>
Western Electric	5	-	1
Argonne Nat. Lab.	3	1	1
Motorola	2	2	2
Stewart Warner	3	3	-
R.R. Donnelley	2	2	1
First National Bank	1	4	-
Illinois Bell Telephone Co.	-	4	1

NEXT TEAM MATCHES

There are two matches scheduled for the month of February. The first match will be on Wednesday, February 8th at the First National Bank, 38 South Dearborn Street, starting at 7:00 P.M. The second is scheduled for Tuesday, February 28th with R.R. Donnelley here at Hawthorne, Room 285, Main Restaurant, starting at 6:30 P.M.

REPORT OF C.I.C.L. MEETING

The Chess Club of Sunbeam Corporation was unanimously accepted into the League at the last meeting on January 24th.

Also, the possibility of splitting the League into two divisions with each two teams from Hawthorne and Argonne Nat. Lab. was given consideration.

A tentative date, namely Friday, June 23rd, was set for the annual League Banquet.

CLASS TOURNAMENT STANDINGS

<u>Class "A"</u>	<u>W.</u>	<u>L.</u>	<u>D.</u>	<u>Class "B"</u>	<u>W.</u>	<u>L.</u>	<u>D.</u>
W. Elliott	5	1	1	J. Fajkus	10	-	-
J. Norlock	3	1	-	L. Schriner	5	1	-
W. Hammerschmidt	2	2	-	K. Dopheide	7	2	-
D. Kmro	2	2	1	E. Espe	4	2	-
E. Puto	2	2	-	J. Traeger	6	5	1
H. Wettersten	3	3	-	M. Robaszewski	4	5	-
A. Vikrikas	1	3	-	W. Kastning	4	6	-
C. Olsen	1	5	-	J. Sula	2	4	-
				R. Berry	2	7	-
				J. Parker	-	2	1
				W. Braham	-	2	-
				R. Broniarczyk	-	4	-
				U. Tamm	-	4	-
				<u>Class "C"</u>	<u>W.</u>	<u>L.</u>	<u>D.</u>
				R. Rook	7	1	-
				F. Shriner	10	2	-
				G. Wallenbecker	5	1	-
				G. Bandik	2	1	-
				G. Mullholland	4	4	-
				N. Knol	5	6	-
				E. Mendrick	3	4	-
				W. Scheck	2	3	-
				L. Wilburn	1	-	-
				C. Drwal	1	2	-
				L. Giels	-	2	-
				E. Kirn	-	14	-

Class "C" players correct your schedule. Joel Gearing has withdrawn from the tournament.

TOURNAMENT HAPPENINGS

Two valuable points were gained by Walter Elliott when he won two tournament games from Will Hammerschmidt, club champion. Our esteemed president had lost only one class tournament game in more than three years of competition.

SPEED TOURNAMENT

The season's third 10 sec. speed tournament was won by Will Hammerschmidt. Tony Vikrikas was second and Herman Serdoz came in third. The pocket chess set went to Herman Serdoz.

There is no speed tournament scheduled for February.

Current point standing:

W. Hammerschmidt	7	J. Fajkus	2
T. Vikrikas	5	H. Serdoz	1
W. Elliott	2	U. Tamm	1

SOLUTION OF THE LAST PROBLEM

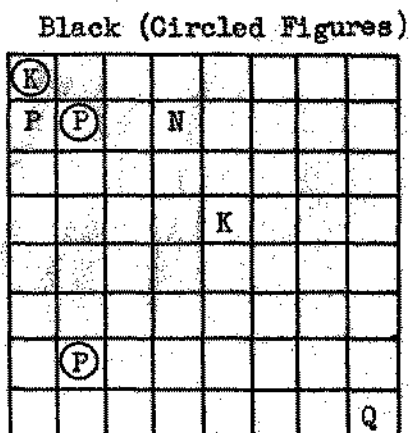
White mates by playing

1. P - N8 Queen, Check.....KxQ
2. K - K6.....K-R1
3. K - B7.....P-Q4
4. B - N7 Checkmate

All moves by Black are forced!

PROBLEM #4

White to move and mate in three.



White

U.S. CHESS FEDERATION MEMBERSHIP

The Hawthorne Chess and Checker Club is a chapter of the U.S. Chess Federation and has the authority to sign up members.

U.S. Membership includes a yearly subscription the official monthly periodical "Chess Life" America's chess newspaper. Also, members are entitled to a discount on books and equipment. A national rating, the name and standing will be published periodically in "Chess Life" after participation in a rated tournament. U.S.C.F. Members can compete for titles and prizes conducted by U.S.C.F. throughout the United States.

The Membership fee is \$5.00 for one year if paid to the federation. Members of the Hawthorne Chess and Checker Club pay only \$4.00.

Consult the club officers for more information.

