

"The most important of all chess rules; that which lays down that when a piece has once been touched, it must be moved, whatever the circumstances.... The royal game was intended to show kings the consequence of action--a salutary lesson."

Gustav Schenk,
The Passionate Game, 1937

"Chess is a domain in which criticism has not so much influence as in art; for in the domain of chess the results of games decide, ultimately and finally."

Richard Reti,
Modern Ideas in Chess, 1923

Tautvaisas Simultaneous. Illinois Open Chess Champion Paul Tautvaisas will give a simultaneous exhibition on March 24, 1965. If you would like to match wits with Chicago's leading master contact your team captain or club representative. Details are as follows:

Event: Tautvaisas Simultaneous Exhibition
Date: Wednesday, March 24, 1965
Place: Albright Gym, Cermak & 50th
Time: 7:00 P. M.
Fee: None
Eligibility: Member of a Chicago Industrial Chess League club or team
Board limit: Four per League club with unused boards to be given to teams which request more than four boards (If there are still unused boards they may be given to guests of League members)
Spectators are welcome as well.

Awards Banquet. Set aside Friday, June 11, 1965 for the annual awards banquet to be held at the Old Prague Restaurant. In addition to a good meal, we will have movies of the record-breaking 1963 U. S. Open Chess Championship which was held here in Chicago plus our traditional seven-minute speed chess tournament. Plan to attend and help make this the most successful banquet we've ever had. Wives are welcome, also. Details:

Event: Annual Awards Banquet
Date: Friday, June 11, 1965
Place: Old Prague, 5928 W. Cermak Rd.
Time: 6:30 P. M.
Menu: Choice of fish or chicken and/or beef
Program: Dinner
Awards
Election of Officers

Program (continued):
 U. S. Open Film
 Seven-minute speed tournament (cash awards)
 Cost: \$4.00 per person

Highlights of Business Meeting. A League business meeting was held January 12 with seven clubs represented. The following action was taken:

Plans for the Tautvaisas simultaneous exhibition were made definite.

A committee of Walter Elliott and Ray Fabijonas was appointed to make arrangements for our annual banquet.

The USCF rules were adopted and will govern all matches. (This has been a tacit assumption in the past.) A modification of the "castling" rule was also adopted. In castling, a player must move his King first. If instead, the Rook is moved (or even touched) first, the player must make a Rook move and may not castle on that particular move. The USCF rules state that the King must be moved first, but only prescribes a warning if an infraction of this rule occurs. This is a very weak rule and we felt that it should be clarified, one way or the other; either allow castling by moving either piece first or enforce the present rule by requiring that the player not castle and move the touched Rook. we chose to clarify it by enforcing the rule that the King must be moved first.

It was decided to look into the possibility of having games in our League matches between USCF members rated.

It is trusted that our discussion of player conduct will prevent any more occurrences and misunderstandings on this matter in the future. Comments about games which are still in progress must not be made such that they may be heard or overheard by either of the players. Similarly, analysis of a game in progress on another board which may be seen by either player is forbidden.

League Standings. The Argonne Bishops continued undefeated in January with wins over Stewart-Warner/Sunbeam and First National Bank. The stage is set for the critical February match between the two leaders, the Argonne Bishops and Argonne Knights. The Western Electric Chargers took sole possession of third place by downing Illinois Bell $7\frac{1}{2}-\frac{1}{2}$. Bob Pinner scored the half-point by drawing a Queen versus Rook and Bishop ending with Erwin Puto. Goss Printing entered the plus column by drawing an exciting match with the Western Electric Gambiteers, 4-4. Motorola continued to move up in the standings, overtaking First National Bank by defeating them, $6\frac{1}{2}-1\frac{1}{2}$.

<u>Place</u>	<u>Team</u>	<u>Match Points</u>	<u>Game Points</u>
1	ANL Bishops	7-1 5-0 5+6+	38 37 39 47
2	ANL Knights	7-0 6-0 4-0 5-0	25 30 38 $44\frac{1}{2}$
3	WE Chargers	5-2 4-1 4-2	30 33 41
4	WE Gambiteers	3 1 $1\frac{1}{2}$ 4-2	24 28 28 $\frac{1}{2}$
5	Motorola	3-2 3 2 2 $\frac{1}{2}$	21 25 25 $\frac{1}{2}$
6	First National Bank	2-3 3-3 3-4	15 20 22
7	Stewart-Warner/Sunbeam	2-4 1-3 4-4	11 11 22 $\frac{1}{2}$
8	Goss Printing	2 1 $1\frac{1}{2}$ 4 1 $1\frac{1}{2}$ 4 $\frac{1}{2}$	11 19 25 $\frac{1}{2}$
9	Johnson & Johnson	0-3	6
10	Illinois Bell	1-6 0-5 4-6	7 9 $17\frac{1}{2}$

ILLINOIS BELL	1/2	WE CHARGERS	7 1/2	SW/S	2	ANL BISHOPS	6
W. Perez	0	J. Warren	1	F. Tomecek	0	J. Jackson	1
R. Racaitis	0	W. Hammerschmidt	1	J. Bikulcius	1	T. DeParry	0
R. Lauth	0	W. Elliott	1	F. Peterson	0	E. Wilip	1
E. Szczepkowski	0	J. Sullivan	1	C. Luth	0	R. Fabijonas	1
R. Pinner	1/2	E. Puto	1/2	A. Kulak	0	V. Puchala	1
W. Lundeen	0	H. Wettersten	1	R. Zollunger	0	J. Froehlich	1
G. Unruh	0	R. Gniadak	1	J. Upermanis	0	G. Dickerson	1
W. Gallagher	0	J. Kyrychenko	1	M. Lachenmann	1	J. Pollock	0

GOSS PRINTING	4	WE GAMBITEERS	4	FIRST NATIONAL	1 1/2	MOTOROLA	6 1/2
V. Tums	1	H. Forrester	0	C. Lee	0	R. Ogasawara	1
G. Kral	1/2	R. Rook	1/2	K. Saikauskas	0	K. Anderson	1
E. Kolodziej	1	L. Schriener	0	D. McCluskey	1/2	J. Neumark	1/2
J. Maks	0	G. Hoover	1	M. Mejzr	1	J. Hoglund	0
H. Stutz	0	W. Goranson	1	W. Barendson	0	L. Whitman	1
D. Wypijewski	0	F. Shriner	1	C. Fleisch	0	A. Curry	1
L. Stanfield	1/2	J. Johnson	1/2	Forfeit	0	S. Linkowski	1
H. Mazur	1	R. Pelz	0	Forfeit	0	G. Hockney	1

FIRST NATIONAL	1	ANL BISHOPS	7
D. McCluskey	0	A. Sandrin	1
J. O'Gallagher	0	R. Fabijonas	1
R. Buchanan	1	F. Helm	0
S. Kane	0	A. Visser	1
C. Fleisch	0	J. Froehlich	1
Forfeit	0	J. Jackson	1
Forfeit	0	T. DeParry	1
Forfeit	0	E. Wilip	1

Tie-line Match Postponed. Due to Commercial Chess League schedule changes, the New York Western Electric/AT&T team had to postpone their telephone match with Hawthorne until February 11.

Oak Park Edges Gambiteers. An "Oak Park" chess team defeated the Indiana State Prison Gambiteers by the narrow margin of 5-4 on January 17. This was the third and closest match between these two teams. Since their very first match, which was with Oak Park in 1962, the Gambiteers have battled teams from Evanston, Des Plaines, Gary, Calumet City, Marquette and Park Forrest. Oak Park remains the only team that they have not beaten or tied.

OAK PARK	5	GAMBITEERS	4
Ed Formanek	1	Henry Tyler	0
Jim Warren	1/2	Raymond Duvall	1/2
Winton Fulk	1	Raul Maisonet	0
Fred Bender	0	Abe Ahmed	1
Bob Florian	1	Walter Green	0
Ray McGuire	1	Wayne Peterson	0
Andrew Schiller	0	Richard Cherry	1
Tom Stuart	1/2	Earl Monroe	1/2
John Wood	0	John Weaver	1

Chicago Open. The 1965 Chciago Open (Sam Cohen Memorial Tournament) will be held on successive week-ends March 6-7, 13-14 at the Hotel North Park, 1931 N. Lincoln Park West. This is an eight-round Swiss with games played at 11 A.M. and 6 P.M. each day. Registration deadline: 10 A.M. March 6 at the hotel (no entries accepted by phone at the hotel.) Advance registration (at a \$1 discount) accepted by mail before March 1 at Gompers Park, 4224 W. Foster, Chicago, Illinois 60630 or by phone Friday evening (before Midnight) February 26 or March 5 (PE 6-4338).

Entry fee: \$13 to USCF members (others, \$5 additional for USCF membership)
\$9 to juniors

Prize fund: Over \$1000 in all classes as usual.

Sponsored by the Chicago Chess Foundation. Bring sets and clocks if possible.

Illinois Open. The 1965 Illinois Open, a seven-round Swiss this year, will be held over Memorial Day week-end May 28, 29, 30, 31. Location will also be the Hotel North Park and the prize fund about \$1700. More details later.

Grombacher, Silverman Tie for Rogers Park Open Championship. Bob Lerner reports that the first annual Rogers Park Open, a four-round Swiss held January 23 & 24, ended with co-champions Walter Grombacher and Stewart Silverman scoring 3½-½ to lead the 24-player field. Bracketed at 3-1 were David Sillars, William Seitz and Sam Crown.

Problem Solving Contest Standings. The three-way tie for first place continued this month as five members solved Problem No. 8 and six solved No. 9.

<u>Place</u>	<u>Name</u>	<u>Points</u>
1-3	James Bingle	7
1-3	Walter Elliott	7
1-3	Joe Neumark	7
4-5	Tony Czerniecki	5
4-5	Ted DeParry	5
6	Frank Tomecek	3
7	Lionel Stanfield	2
8	Herman Zimmerman	1

Solutions to Last Month's Problems.

No. 8: 1 Q-Q8!! N-K8 2 R-Q7 N-Q6 3 RxN K-B7 4 R-B3 mate

No. 9: 1 P-R4! R-K4 2 N-N3 R-K7ch 3 NxR mate
R-N4 2 N-K3 R-N7ch 3 NxR mate
PxP e.p. 2 RxP any 3 R-B3 mate

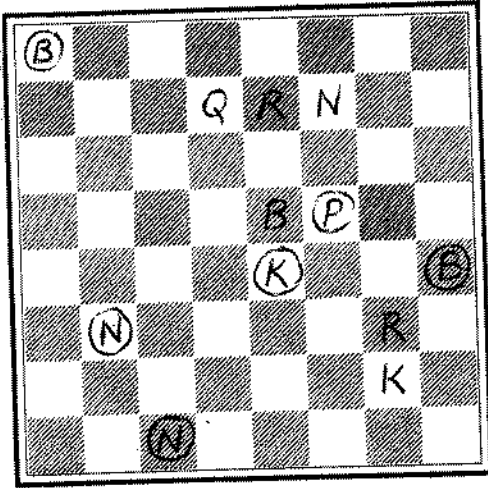
Game Publication. Very few games have been submitted for publication so far this season. Send your interesting games from League play to: James E. Warren, Chairman, Chicago Industrial Chess League, Western Electric Company, Dept. 3223, Hawthorne Station, Chicago, Illinois 60623.

Problems 10 and 11. SOLUTIONS MUST BE RECEIVED BY FEBRUARY 26.

PROBLEM NO. 10

P. F. Blake

BLACK



WHITE

White to move and mate in two

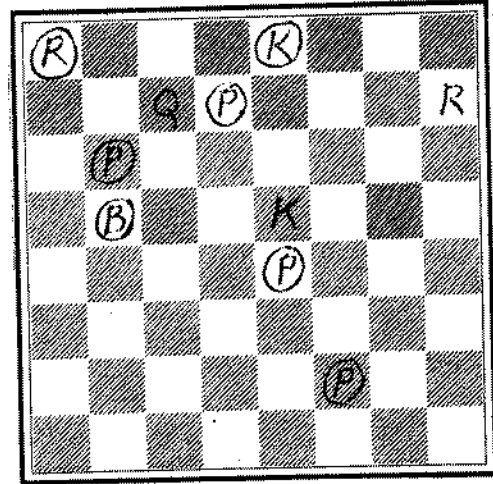
White: K at KN2
 Q at Q7
 R at K7, KN3
 N at KB7
 B at K5

Black: K at K5
 N at QN6, QB8
 B at QR1, KR5
 P at KB4

PROBLEM NO. 11

Dr. B. Zepler

BLACK



WHITE

White to move and mate in four

White: K at K5
 Q at QB7
 R at KR7

Black: K at K1
 R at QR1
 B at QN4
 P at QN3, Q2, K5, KB7

The Laws of Chess. From time to time some of the rules governing tournament and match games will be published. Inasmuch as illegal moves and illegal positions have occurred periodically, the following excerpts from The Official Blue Book and Encyclopedia of Chess by Kenneth Harkness are given:

Article 8

THE TOUCHED MAN

Provided that he first warns his opponent, the player having the move may adjust one or more men on their squares.

Except for the above case, if the player having the move touches one or more men, he must make his move by moving or capturing the first man touched which can be moved or captured.

No penalty is entailed if the opponent does not claim a violation of this rule before himself touching a man, or if none of the moves indicated above can be made legally.

Article 9

ILLEGAL POSITIONS

1. If, during a game, it is found that an illegal move was made, the position shall be reinstated to what it was before the illegal move was made. The game shall then continue by applying the rules of Article 8 to the move replacing the illegal move. If the position cannot be reinstated, the game shall be annulled and a new game played.

...an illegal move must be corrected, provided the illegality is found and verified before the game ends. A finished game is not affected by the law; if illegal moves were made, they stand as played.

...The illegal move and all moves thereafter are canceled, the position reinstated to what it was before the illegal move was made, and the game continued. The player who made the illegal move must substitute a legal move, and the rules of Article 8 apply to this move.

...4. If, during a game, it is found that the initial position of the men was incorrect, the game shall be annulled and a new game played.

5. If, during a game, it is found that the board has been wrongly placed, the position reached shall be transferred to a board correctly placed and the game shall be continued.

Jim Warren, Chairman
Chicago Industrial Chess League