

"The student that needeth Chess or Cards to please his mind, I doubt, hath but a carnal empty mind."

Richard Baxter,
A Christian Directory, 1673

"Chess is a game of noble exercise for the mind, as requiring much forecast and understanding."

John Guillim,
A Display of Heraldrie, 1610

Argonne and Western Electric Teams Win December Matches. The Argonne Knights and Bishops and Western Electric Chargers and Gambiteers scored decisive wins last month to take the top four positions.

Place	Team	Match Points	Game Points
1	ANL Knights	4-0	25½
2	ANL Bishops	3-0 4-0	18 24
3-4	WE Chargers	3-1 4-1	22½ 30
3-4	WE Gambiteers	3-1 3½-1½	20½ 24½
5	First National Bank	2-1 2-2	13 14½
6	Motorola	2-2 3-2	15 21½
7	Stewart-Warner/Sunbeam	1-2 1-3	9 11
8	Johnson & Johnson	0-3	6
9-10	Goss Printers	0-4 ½-4½	7½ 11½
9-10	Illinois Bell	0-4 0-5	7½

WE CHARGERS	6½	GOSS PRINTERS ①	1½	ANL KNIGHTS	7½	ILLINOIS BELL ②	½
J. Warren	½	V. Tums	½	M. Hamermesh	1	W. Perez	0
J. Sullivan	0	G. Kral	1	J. Scherer	½	R. Racaitis	½
W. Elliott	1	E. Kolodziej	0	V. Krohn	1	R. Lauth	0
D. Kumro	1	H. Stutz	0	D. Kucera	1	R. Pinner	0
A. Vikrikas	1	D. Wypijewski	0	R. Wilson	1	E. Szczepkowski	0
E. Puto	1	L. Stanfield	0	J. Bingle	1	L. Farris	0
H. Wettersten	1	H. Mazur	0	V. Trice	1	W. Lundeen	0
J. Kyrychenko	1	T. Morrisette	0	M. Doyama	1	B. Bertrand	0

WE GAMBITEERS	5½	FIRST NATIONAL ③	2½	MOTOROLA	1½	ANL BISHOPS ④	6½
H. Forrester	0	C. Lee	1	N. Goncharoff	0	A. Sandrin	1
R. Rook	1	D. McCluskey	0	M. Findling	0	J. Jackson	1
L. Schriner	1	M. Mejzr	0	R. Ogasawara	½	T. DeParry	½
K. Dobr	½	S. Gerson	½	J. Neumark	1	E. Wilip	0
W. Goranson	1	L. Ryczek	0	L. Whitman	0	R. Fabijonas	1
F. Shriner	1	W. Barendson	0	A. Curry	0	F. Helm	1
R. Pelz	1	N. Simpson	0	S. Linkowski	0	V. Kubilius	1
R. TerVeen	0	E. Grove	1	R. Garrett	0	V. Puchala	1

Business Meeting. The next League business meeting will be held January 12, 1965 at 6:30 P. M. at the Hawthorne Savings and Loan, 4800 W. 24th Place, Cicero, Illinois. Each club should send two representatives. Topics to be discussed:

1. Plans for Tautvaisas exhibition
2. Proposed changes to Policies and Practices
3. Plans for banquet
4. Trophies
5. Any other new business

Activity Poll Results. Response to the activity poll in the November bulletin was as follows:

Tautvaisas Exhibition	22
Reshevsky Exhibition	20
30/30 Tournament	19
Banquet preference:	
Friday	25
Saturday	11

Czerniecki Scores 9-1. Tony Czerniecki of Johnson & Johnson paid a holiday visit to the Marpar Chess Club. Immediately the past Master went into action. He prepared for an impromptu simultaneous chess match against ten Marpar players. Bob Racaitis of Illinois Bell was the only member to score a point as Tony won all the rest.

Hawthorne Challenges Headquarters. Another telephone match has been arranged by the Western Electric Hawthorne Chess Club, this time with a combination WE and AT&T six-man team in New York City. The New York team will be made up of players from three different four-man teams. These teams play in three of the five divisions of the Commercial Chess League and each is currently leading its own division. It is set for January 27 and should prove to be an interesting match.

Koltanowski Series on TV. Chicago's educational television station, WTTW (Channel 11), is carrying a 30-week series on Chess which began December 10. During the half-hour program at 10 P. M. each Thursday, George Koltanowski, who conducts the syndicated chess column in the Sun-Times, discusses a chess problem, gives a little of the history of the game, plays through and annotates a game or two, relates chess anecdotes and provides some elementary instruction. Frank Skoff suggests in the Illinois Chess Bulletin that players in the Chicago area write the Sun-Times and TV-station expressing their appreciation for the series.

Three-way Tie for First. As we approach the half-way point in the season James Bingle and Walter Elliott have moved into a tie with Joe Neumark for the lead in the problem solving contest.

<u>Place</u>	<u>Name</u>	<u>Points</u>
1-3	James Bingle	5
1-3	Walter Elliott	5
1-3	Joe Neumark	5
4-5	Tony Czerniecki	3
4-5	Ted DeParry	3
6-7	Lionel Stanfield	2
6-7	Frank Tomacek	2
8	Herman Zimmerman	1

Solutions to Last Month's Problems. Problem No. 6 by John Bielfeldt is an example of what is referred to in chess problem terminology as the Nowotny interference theme. As Alain C. White describes the theme, "...a white man is moved to a square which intercepts the line of defence both of a Black Rook and of a Black Bishop. Either of these Black pieces can capture the intruder, but whichever one does so interferes at the same time with the defence of his comrade, allowing one of two mates or continuations to remain effective."

Solution: 1 Q-K6 RxQ 2 N(R4)-N6ch K-N1 3 R-R8 mate
BxQ 2 N-B5ch K-N1 3 N-K7 mate

The key move in Problem No. 7 shows a clever reason for a so-called "remote promotion to a Knight." The blockade of the promoted Pawn on QB7 must disappear in order to provide a square for the Rook on B6 to deliver a discovered check-mate.

Solution: 1 P-B8(N)! K-K5 2 N-R7 and 3 R-B8 mate

Newcomer Scores Upset Victory. Chester Lee won the following game from Expert Valdis Tums to give the First National Bank the edge over Goss Printers in their November match, 4-3.

WHITE: Valdis Tums

BLACK: Chester Lee

1 P-K4	P-K4	9 P-KN3	N-Q2	17 N(4)xP	P-R5
2 N-KB3	N-KB3	10 QN-Q2	QN-B3	18 N-QN1	P-R6
3 NxP	P-Q3	11 O-O-O	P-B3	19 PxP	RxP
4 N-KB3	NxP	12 N-R4	Q-R4	20 R-Q3	RxR
5 P-Q4	P-Q4	13 N-N3	QxP	21 QxR	N-K5
6 B-Q3	B-Q3	14 P-KB3	P-QR4	22 N-R4	B-Q2
7 Q-K2	O-O	15 BxN	BPxB	23 R-B1	RxRch
8 B-K3	P-KB4	16 N-Q2	PxP	24 QxR	B-R6ch
				25 Resigns	

Problems 8 and 9. SOLUTIONS MUST BE RECEIVED BY JANUARY 29. See page 4 for diagrams.

PROBLEM NO. 8

White: P at QN2, QN3
R at QN7
Q at Q3
K at QR2

Black: N at QB7
K at QB8

White to move and mate in four

PROBLEM NO. 9

White: P at QR2, QN3, Q4,
KR3, KR4
R at QB2
N at Q6, KB1
K at KB2

Black: P at QN5, QB6, Q4,
KB3, KR4
R at KB4
K at KB5

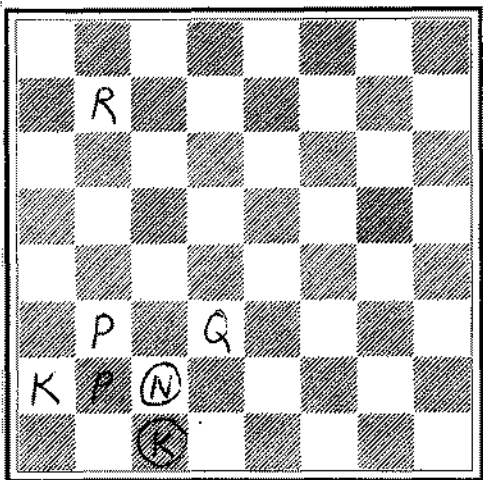
White to move and mate in three

PROBLEM NO. 8

Dr. E. Zepler

3rd Prize, Dr. Palitzsch
Memorial Tournament, 1932

BLACK



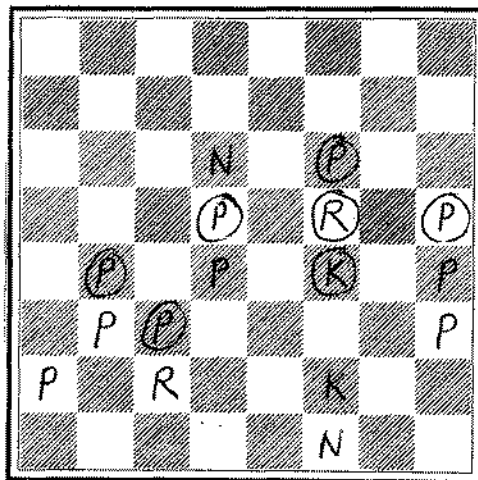
WHITE

PROBLEM NO. 9

Dr. K. Fabel

German "Schachblätter"
July 1, 1941

BLACK



WHITE

Jim Warren, Chairman
Chicago Industrial Chess League