

"An infallible method of conquering at Chess is not absolutely impossible; nobody has hitherto discovered it, and I believe it will never be discovered, because it depends on too great a number of combinations."

Jacques Ozanam,  
Preface to Mathematical and Physical  
 Recreations, 1708

"...I find it to be the general opinion of those of my friends who are reasonably proficient chess players that the days of chess as an interesting human occupation are numbered. They expect that within from ten to twenty-five years, chess machines will have reached the master class, and then, if the efficient but somewhat machine-like methods of the Russian school have allowed chess to survive so long, it will cease to interest human players."

Norbert Wiener,  
God and Golem, Inc., 1964

30/30 Tournament Launches Eighth Season. The eighth year of League competition will get under way with a one-day five-round 30/30 chess tournament. This is an individual event open to League members and guests. General information:

Date: Saturday, September 12, 1964  
 Place: Albright Gym, Cermak & 50th  
 Registration: 8:30 to 9:00 A.M.  
 Entry Fee: \$2.00  
 Type of Tournament; 5-round Swiss, USCF rules (not rated)  
 Time Limit: 30 moves in first 30 minutes,  
 20 moves in next 20 minutes,  
 adjudication after 50 moves if necessary  
 Chess Clocks: Bring mechanical chess clock if you have one  
 Do not bring chess sets; they will be provided  
 Prizes: All money from entry fees will be returned in cash prizes  
 About 25% of the participants will receive prizes

Welcome to Goss Printing. Best wishes are extended to the newest member of the League, The Goss Printing Company. They will join Argonne (two teams), First National Bank, Illinois Bell, Johnson & Johnson, Motorola, Stewart-Warner/Sunbeam and Western Electric (two teams) in a round robin tournament for the 1964-1965 Chicago Industrial Chess League Championship.

Game Publication. Throughout the season players are encouraged to submit interesting games from League play for publication in the bulletin.

League Dues. The membership dues this season are once more \$20 per club and are payable to Mr. Mejr.

Illinois Open Scheduled for October. The Illinois Open Chess Tournament will be held on successive week-ends October 17-18, 24-25 at Gompers Park Fieldhouse, 4224 W. Foster, Chicago 60630. This is an 8-round Swiss with games played at 11:00 A.M. and 6 P.M. each day. Registration: Evenings of Oct. 9 and 16, and up to 10:00 A.M. Oct. 17. Entries accepted by phone from rated players (PE 6-4338) at the above times.

Entry fee: \$13 to USCF members (others, \$5 additional)  
\$9 to juniors (under 19), with a \$1 discount to all who enter before Oct. 17 plus a tournament booklet.

Spectator fee will be charged: \$1.00

Prize fund: Over \$1,000 in all classes as usual, with \$200, \$125 and \$100 for the first three spots.

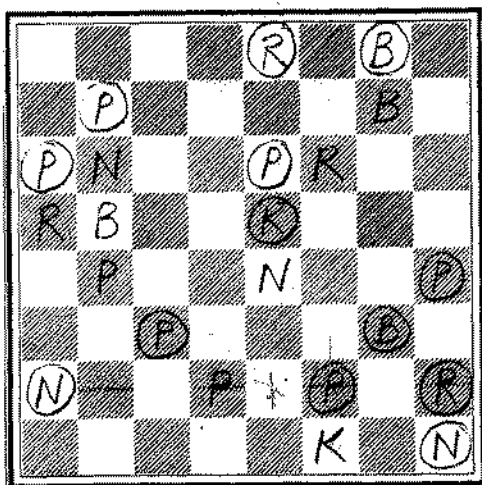
Sponsored by the Chicago Chess Foundation. Mail entries to Frank Skoff at the address given above. Bring clocks and sets, please.

Chicago Expert Dies. Sam Cohen, USCF expert and for many years one of Chicago's strongest chess players, died last month. During the twenty odd years Sam was active in tournament chess he met and defeated many of the strongest masters. His last tournament was the 1963 U. S. Open here in Chicago in which Sam put together a string of 7 wins and 2 draws after a slow start, including victories over USCF masters Richard Verber, Paul Poschel, Paul Tautvaisas and Ivan Theodorovich. Chicago chess and Sam's many friends will miss him.

Problem Solving Contest. Two book prizes have been anonymously donated to the Industrial Chess League to be awarded at the end of the season to the two best problem solvers. Each bulletin will contain one or more problems and the solution(s) to the previous problem(s). To be eligible for a prize one must play in at least one League match during the season. Send solutions before the deadline to: James E. Warren, Western Electric Company, Dept. 3223, Hawthorne Station, Chicago, Illinois, 60623.

The Steinitz Gambit. The following is certainly one of the most spectacular chess problems composed by the famed Sam Loyd. Given the motto, "The Steinitz Gambit," it won first prize in the Novelty Tourney of the little Canadian magazine Checkmate in 1903. SOLUTIONS MUST BE RECEIVED BY SEPTEMBER 28.

BLACK



WHITE

PROBLEM NO. 1

White to move and mate in three

"The Steinitz Gambit."

First Prize, Checkmate Novelty

Tourney, 1903.

To recanitulate the diagram, the position is as follows:

White: P at QN4, Q2  
R at QR5, KB6  
N at QN6, K4  
B at QN5, KN7  
K at KB1

Black: P at QR3, QN2, QB6, K3, KB7, KR5  
R at K1, KR7  
N at QR7, KR8  
B at KN1, KN6  
K at K4

Message from Your New Chairman. During the five years in which I have been associated with the Chicago Industrial Chess League it has always enjoyed able leadership. It will be my aim to continue the efforts of my predecessors in making this a most successful season. Your correspondence and suggestions are always welcome.

Jim Warren, Chairman  
Chicago Industrial Chess League