

"Chess mastery is the supreme example of concentrated mental power exercised on insatiable futility."

E. G., circa 1937

"Of all the varied amusements which the fertile mind of man has from time to time originated, we know of none which, for antiquity, variety, moral excellence and social enjoyment, can in any way be compared with the classic game of Chess..."

Howard Staunton,
Chess Player's Chronicle, 1852

Second Annual 30/30 Tournament. The ninth year of League competition will get under way with a one-day five-round 30/30 tournament on September 18. Last year's tourney drew 32 players and was won by Angelo Sandrin. Once again this is an individual event open to League members and their guests. Players from the prospective new League members, Rotoprint, Teletype and Bell & Howell are invited as well. Register in advance through your team captain, if possible.

- Date: Saturday, September 18, 1965
- Place: Albright Gym, Cermak & 50th
- Registration: 8:30 to 9:00 A.M.
- Entry Fee: \$2.00
- Type of Tournament: One-day 5-round Swiss, USCF rules (not rated)
- Time Limit: 30 moves in first 30 minutes,
20 moves in next 20 minutes,
adjudication after 50 moves if necessary
- Chess Clocks: Bring mechanical chess clock if you have one
- Prizes: All money from entry fees will be returned in cash prizes
About 25% of the participants will receive prizes
- 1964 Winner: Angelo Sandrin

Welcome to Argonne Pawns. Best wishes are extended to the newest member of the League, the Argonne Pawns. Since 1961 Argonne and Western Electric have been represented by two teams in the League--and now Argonne is the first club to expand to three teams. It is heartening to realize that chess activity has increased to such an extent that one club is able to support three teams. Good Luck!

League Business Meeting. On August 24 all seven clubs were represented at our business meeting. In addition, Ron Kovalic and Louis Kemp of Rotoprint Company, Ed Srubas of Teletype Corporation and Andrew Bartoli of Bell & Howell Company also attended. The following action was taken:

1. Plans were made for the second annual 30/30 tournament.
2. The problem solving contest was considered a worthwhile feature of the bulletin and will continue to appear. The new contest for this season begins in this issue. Book prizes will be awarded to the top three solvers.

3. Club dues for one-team companies will remain \$20 per year. Clubs with multiple teams will pay an additional \$10 per team per year.
4. Any member company may request to enter two or more teams into League competition.
5. Argonne's application for entry of a third team (the Pawns) into the League was approved.
6. September 10 was set as the deadline for decisions by Rotoprint, Teletype and Bell & Howell on whether or not they will enter the League this season.
7. The present method of match scheduling will continue. It was suggested that geographical considerations be taken into account when setting up this season's schedule. For example, the matches between proximate teams should be scheduled for the winter months and those between the most distant teams in the fall or spring. To the extent possible this will be done.

Financial Report. The following is a financial summary for the entire 1964-1965 season.

	<u>Income</u>	<u>Expenses</u>
June 17, 1964 balance	52.23	
Dues from 7 clubs	140.00	
Interest	3.27	
Tautvaisas exhibition		30.00
Refreshments, 30/30 tournament		9.00
Refreshments, Tautvaisas exhibition		9.36
Trophies and engraving		29.00
Petty cash		27.59
Banquet speed chess prizes		60.00
Banquet surplus	4.55	
	<u>200.05</u>	<u>164.95</u>
August 26, 1965 balance	35.10	

Game Publication. Once again players are encouraged to submit interesting games from League play and tournaments throughout the season for publication in the bulletin.

Castling Rule. In castling, a player must move his King first. If instead, the Rock is moved (or even touched) first, the player must make a Rook move and may not castle on that particular move. The USCF rules state that the King must be moved first, but only prescribes a warning if an infraction of this rule occurs. This is a very weak rule and we felt that it should be clarified, one way or the other; either allow a player to castle by moving either piece first or enforce the present rule by requiring that the player not castle and move the touched Rook. We chose to clarify it by enforcing the rule that the King must be moved first.

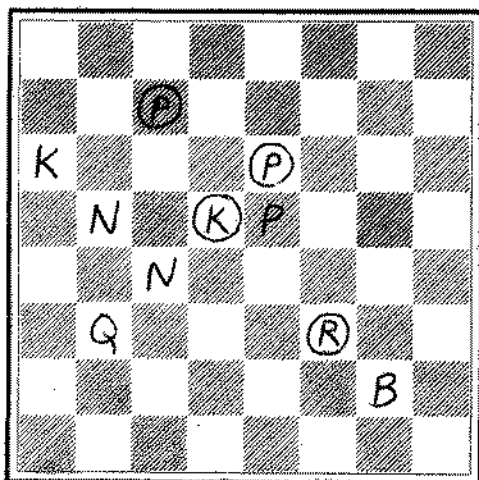
Gompers Wins Double Victory. The Gompers Park Chess Club won a double match against the Evanston and Metro Chess Clubs on August 27. The two 13-board matches were decided in Gompers' favor 7-6 and 11-2, respectively.

New Problem Solving Contest. Once again we are conducting a problem solving contest. Each bulletin will contain two problems and the solutions to the previous month's problems. Book prizes will be awarded to the top three solvers at the end of the season. To be eligible for a prize one must play in at least one match during the 1965-66 season. Send solutions before the deadline to: James E. Warren, Dept. 3223, Western Electric Company, Hawthorne Station, Chicago, Illinois, 60623.

Problems 1 and 2. SOLUTIONS MUST BE RECEIVED BY SEPTEMBER 30.

PROBLEM NO. 1

BLACK



WHITE

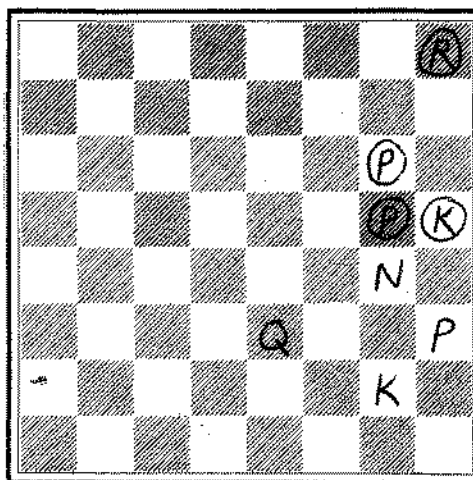
White to move and mate in two

White: K at Q6
Q at Q3
B at K2
N at Q5, Q4
P at K5

Black: K at Q4
R at K6
P at Q2, K3

PROBLEM NO. 2

BLACK



WHITE

White to move and mate in two

White: K at K2
Q at K3
N at K4
P at K3

Black: K at K4
R at K1
P at K3, K4

Jim Warren, Chairman
Chicago Industrial Chess League