

CHICAGO INDUSTRIAL CHESS LEAGUE BULLETIN

Vol. IX

November 21, 1965

No. 3

"Memory, rather than intelligence, is the most important factor in chess-playing."

Claude Albert Claremont,
The Chemistry of Thought, 1935

"Of my fifty-seven years I have applied at least thirty to forgetting most of what I had learned or read, and since I succeeded in this I have acquired a certain ease and cheer which I should never again like to be without. If need be, I can increase my skill in chess, if need be I can do that of which I have no idea at present. I have stored little in my memory, but I can apply that little, and it is of good use in many and varied emergencies. I keep it in order, but resist every attempt to increase its dead weight."

Emanuel Lasker,
Manual of Chess, 1932

Knights, Bishops and Chargers Remain Undefeated. The Argonne Knights and Bishops beat Goss Printing and Stewart-Warner/Sunbeam respectively by the score of 5½-2½. The Western Electric Chargers equalled their September match score by defeating Hall-Roto 6½-1½ to keep pace with Argonne. Illinois Bell, who may become known as the Carl Schlechter team if they draw many more of their matches, drew their second straight match--this time with the strong Motorola team. The Argonne Pawns hit the .500 mark by downing the Western Electric Gambiteers and the Argonne Bishops edged Motorola 4½-3½ in their November match.

<u>Place</u>	<u>Team</u>	<u>Match Points</u>	<u>Game Points</u>
1-3	ANL Bishops	3-0	14½
1-3	WE Chargers	2-0	13
1-3	ANL Knights	2-0	11
4-6	Motorola	1½-1½	12
4-6	Illinois Bell	1-1	8
4-6	ANL Pawns	1-1	7
7	Hall-Roto	½-1½	5½
8-10	Goss Printing	0-2	6
8-10	Stewart-Warner/Sunbeam	0-2	6
8-10	WE Gambiteers	0-2	3

MOTOROLA 4 ILLINOIS BELL 4 WE CHARGERS 6½ HALL-ROTO 1½

N. Goncharoff	1	W. Perez	0	J. Warren	1	D. Dolan	0
E. Osak	0	R. Racaitis	1	J. Sullivan	1	E. Kolodziej	0
D. Rail	0	R. Lauth	1	W. Elliott	1	R. Kovalic	0
J. Neumark	1	K. Wollenberg	0	D. Kumro	½	O. Mueksch	½

R. Micek	0	G. Unruh	1	E. Puto	1	L. Altschul	0	
E. Czupryna	0	R. Doody	1	H. Wettersten	0	W. Beeskow	1	
R. Garrett	1	B. Motzko	0	J. Kyrychenko	1	G. Miletic	0	
S. Linkowsky	1F	Forfeit	0F	J. Sobun	1	R. Schofield	0	
SW/S		2½	ANL BISHOPS	5½	GOSS PRINTING	2½	ANL KNIGHTS	5½
H. Williamson	½	V. Krohn	½	V. Tums	½	S. Mihailovich	½	
F. Tomecek	0	T. DeParry	1	G. Kral	0	D. Kucera	1	
C. Luth	0	R. Fabijonas	1	J. Maks	0	V. Puchala	1	
V. Kuzelis	0	E. Wilip	1	H. Stutz	1	M. Volpe	0	
E. Skopas	1	A. Visser	0	D. Wypizewski	0	E. Ryan	1	
R. Zollinger	0	G. Dickerson	1	L. Stanfield	0	R. Cotterill	1	
S. Watson	1	J. Froehlich	0	Martiniak	1	M. Doyama	0	
Forfeit	0F	S. Zeilinsky	1F	Strabac	0	R. Govednik	1	
WE GAMBITTERS		½	ANL PAWNS	5½	ANL BISHOPS	4½	MOTOROLA	3½
L. Schriener	0	E. Rudzitis	1	V. Krohn	½	N. Goncharoff	½	
F. Shriner	½	R. Wilson	½	T. DeParry	1	J. Bujalski	0	
K. Dobr	0	L. Baker	1	R. Fabijonas	1	R. Ogasawara	0	
R. Berry	0	E. Veleckis	1	E. Wilip	1	S. Butkoff	0	
J. Traeger	0	E. Gasner	1	J. Froehlich	0	J. Neumark	1	
Forfeit	0F	W. Knoch	0F	Paulikas	0	J. Hoglund	1	
R. Mazocki	0	R. Ivins	1	S. Zeilinsky	1	D. Rail	0	
Forfeit	0F	Forfeit	0F	G. Dickerson	0F	R. Garrett	1F	

New Clubs Eager for Matches. Recently organized chess clubs at Teletype Corporation and Bell and Howell Company are interested in arranging matches with Industrial League teams. Both clubs are subscribing to this season's League bulletins and are looking forward to joining the League for the 1966-67 competition. Interested clubs should contact:

Leo Petelle
 Dept. 1142
 Teletype Corp.
 5555 W. Touhy Ave.
 Skokie, Ill.
 676-1000 Ext 6059

Andrew Bartoli
 Dept. 6709
 Bell & Howell Co.
 7100 N. McCormack Rd.
 Chicago, Ill. 60645
 262-1600 Ext 426

Match Schedule Proposal. Former League chairman Walter Elliott has proposed the following resolution for consideration by the League.

Resolved: The Chicago Industrial Chess League should schedule specific dates and a specific day of the week for all matches. For example: The first Wednesday of each month. Advantages:

1. Players could arrange their personal schedules to enable them to be available for team matches.
2. It would eliminate the difficulties encountered by team captains in setting tentative and later final dates which are mutually satisfactory.

3. It would avoid postponements and cancellations of matches when mutually satisfactory dates cannot be established.
4. The only contact the team captains would require prior to a match would be to establish the starting time.
5. It would be more orderly and conform to other activities with established dates such as other chess leagues, bowling leagues, PTA's and bridge clubs.

This resolution will be considered at our January business meeting.

Rating League Matches. Ten months ago we considered the feasibility of having League games between USCF members rated and a query was sent to the USCF to find out if this is possible. Their reply was delayed because the USCF had not had any policy on this matter. We have now been advised that the Federation will rate such games provided that the League is affiliated (\$10 per year) and the usual rating fee (10¢ per game) is forwarded with the results.

Team representatives should be prepared to discuss this at our January business meeting and send the chairman a list of all USCF members on your team by the end of December.

W. E. Players in Postal Championship Section. Walter Elliott and Jim Warren of the Western Electric Chargers have qualified for and are now playing in the Bell System Postal Chess Championship Section, Round 19. Both players qualified from Round 17--Elliott by finishing second in a candidates' section and Warren by finishing second in the championship section.

Hawthorne Wins Tie-Line Match. In a return telephone match held on October 20 the Hawthorne Chess Team defeated a combination Western Electric/AT&T team from New York 4-2. The first match, held last April, ended in a 3-3 tie. New York is anxious for another match and the teams are shooting for another encounter sometime in January.

HAWTHORNE	4	WE/AT&T	2
J. Warren	1	L. Rojas	0
J. Sullivan	0	P. Yen	1
W. Elliott	1	R. Saffy	0
E. Puto	1	R. Torres	0
L. Schriener	0	D. LaMorte	1
K. Dobr	1	Miss B. Beal	0

Correspondence Chess. Chess players interested in chess by mail are invited to join the Correspondence Chess League of America (CCLA). The CCLA publishes The Chess Correspondent and conducts various correspondence chess events, including social quarterlies, class prize tournaments, challenge matches, specials and others. Players estimate their strength and begin with a rating approximating that strength. They may play in some events, however, with higher- or lower-rated players. For information write to: Dick Rees, 816 S. Cecelia St., Sioux City, Iowa 51106.

Problem Solving Contest. Problems 3 and 4 proved somewhat more difficult as the lead was narrowed to an 11-way tie. Several solvers commented on the difficulty and beauty of the Papadopoulos problem.

<u>Place</u>	<u>Name</u>	<u>Points</u>	<u>Place</u>	<u>Name</u>	<u>Points</u>
1-11	Walter Elliott	4	1-11	Jerry Schloemer	4
1-11	Nik Goncharoff	4	12-14	Lionel Stanfield	3
1-11	W. J. Krupinski	4	12-14	George Kral	3
1-11	Bill Perez	4	12-14	Jim Sullivan	3
1-11	Erwin Puto	4	15-19	George Bandik	2
1-11	Herb Wettersten	4	15-19	Ted Dantzer	2
1-11	Ray Garrett	4	15-19	Joe Bikulcius	2
1-11	Ken Wollenberg	4	15-19	Herman Zimmerman	2
1-11	Frank Tomecek	4	15-19	Bob Gniadek	2
1-11	Jim Bingle	4	20	Bob Micek	1

Solutions to October Problems.

No. 3: 1 N-K3

No. 4: 1 N-B6

To quote the British Chess Magazine: "1 N-B6, giving up four set mates after move of the B/B5: 'total change.' ...this attractive setting has many partial anticipations." This is so true! Several solvers submitted the near tries 1 N-K6 or 1 N-N5.

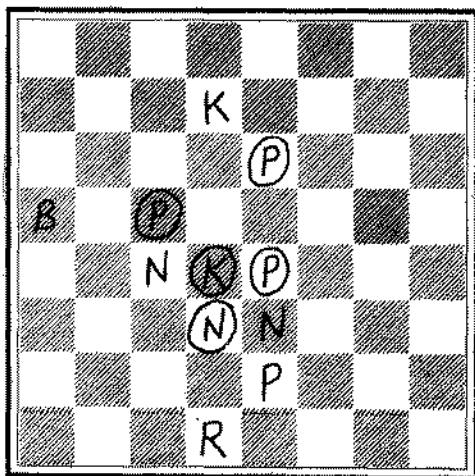
Problems 5 and 6. Send solutions to James E. Warren, Dept. 3223, Western Electric Co., Hawthorne Station, Chicago, Illinois 60623. SOLUTIONS MUST BE RECEIVED BY DECEMBER 17.

PROBLEM NO. 5

John C. Bielfeldt

Knights of the Square Table, 1965

BLACK



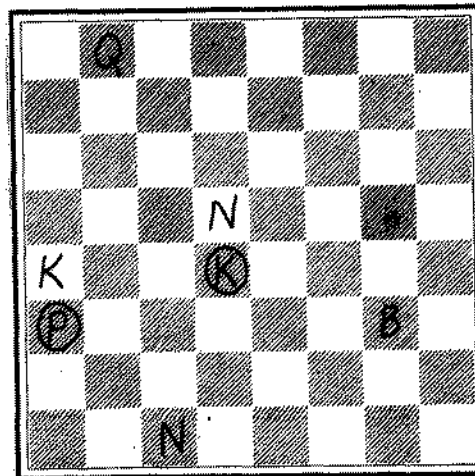
WHITE

PROBLEM NO. 6

John C. Bielfeldt

Cleveland Plain Dealer, 1965

BLACK



WHITE

White to move and mate in three

White: K at Q7
R at Q1
B at QR5
N at QB4, K3
P at K2

Black: K at Q5
N at Q6
P at QB4, K3, K5

White to move and mate in two

White: K at QR4
Q at QN8
B at KN3
N at QB1, Q5

Black: K at Q5
P at QR6

Members' Games. Nik Goncharoff won the following game to deadlock the Motorola-Illinois Bell October match.

White	Black	21 Q-Q3	P-N3	47 R-KN2	K-B3
		22 KR-Q1	B-B4	48 P-R5	P-KN4
Nik Goncharoff	Bill Perez	23 R-Q2	P-QR4	49 P-R6	R-R5
		24 QR-Q1	Q-R5	50 R XR	P XR
	Ruy Lopez	25 Q-KB3	Q-K2	51 R-N4	P-R6
		26 K-B1	Q-K1	52 P-B4	B-Q5
1 P-K4	P-K4	27 R-R2	Q-K2	53 B x P	P-R7
2 N-KB3	N-QB3	28 R-Q3	K-N2	54 B-K4	R-KR1
3 B-N5	N-B3	29 Q-N4	Q-B3	55 R-R4	B-B7
4 O-O	P-Q3	30 P-R4	Q-K4	56 R x P	B-N6
5 P-Q4	B-Q2	31 P-B3	B-N5	57 R-R5	K-K2
6 P-Q5	N-K2	32 K-N1	K-R1	58 P-KB5	B-K4
7 B-Q3	N-N3	33 Q-N5	B-B4ch	59 P-R7	R-KB1
8 N-B3	B-K2	34 K-R2	Q-N2	60 R-N5	B-B3
9 P-KR3	O-O	35 P-N3	B-K6	61 R-N8	B-K4
10 P-QR4	N-R4	36 K-N2	R-B3	62 K-K2	B-R1
11 N-K2	P-KB4	37 Q-N4	R/1-KB1	63 K-B3	B-Q5
12 P x P	N/3-B5	38 K-B1	B-B4	64 K-N4	B-B3
13 N x N	N x N	39 K-K2	P x P	65 K-R5	B-K4
14 B x N	P x B	40 Q x P/3	R-B5	66 K-R6	B-B5ch
15 N-Q4	B-KB3	41 K-Q1	Q-B3	67 K-R5	B-K4
16 N-Q6	B x N	42 Q-N5	B-Q5	68 K-N6	R-B3ch
17 B P x B	B x P	43 R-R2	B-K4	69 K-N5	R-B1
18 R-N1	Q-B3	44 Q x Qch	R/5 x Q	70 R x R	K x R
19 P-QB4	B-Q5	45 R-R1	R-B5	71 P-B6	Resigns
20 B-K4	P-QN3	46 R-Q2	K-N2		

Jim Warren, Chairman
Chicago Industrial Chess League