

CHICAGO INDUSTRIAL CHESS LEAGUE BULLETIN

Vol. X

April 14, 1967

No.6

Editor: R. Fabijonas, 9700 So. Cass Ave., Argonne, Ill. 60439

Chess Problems: J. Warren, 5333 Woodland Ave., Western Springs, Ill. 60558

WHO, WHAT, WHERE

WHO - Every League member. Their Family and their friends.

WHAT - Annual League Banquet: Friday, June 9th, 1967.

WHERE - Old Frague Restaurant
5928 West Cermack Road
Cicero, Illinois

Program: Dinner (Family Style)
Annual Business Meeting
Presentation of Awards
7 minutes chess for chess enthusiasts
Bridge for others

Cost: \$4.25 per person

Register with your team captain.

South Suburban Chess League

We will play 40-60 board match with the S.S.C.L. The number of boards is not confirmed yet by the S.S.C.L. The date for the match is set as Thursday, June 15. It will be played at ANL. Our team will be made up from the best players in the League with each club having at least two representatives.

League Ratings:

Mr. J. Warren has prepared a computer program based on U.S.C.F. rating system for rating League games. All League games on record dating back to 1959-60 season will be rated. Helping Jim are W. Elliott, J. Neumark, V. Puchala, C. Lantz and R. Fabijonas. The ratings should be available by the end of the season and will be used in selecting best players to represent our League.

TOURNAMENT LIFE

2ND Chicago Open (April 28, 29, 30). U.S.C.F. rated five round Swiss at C.C.C. 64 East Van Burren (Rm. 405). 45 moves in two hours.

Championship Section: Open to all. 1st (100; 2nd (75, 3rd (50, 4th (25.

Reserve Section: Open to Class B. players and lower. Class B - \$25 plus trophy,
Class C - \$15 plus trophy, Junior - \$10 plus trophy,
Unrated - \$10 plus trophy. Section winner (other than Class B)
- \$15 plus Class prize plus Section trophy.

BRILLIANCY PRIZE: The Gage B. Crossley brilliancy prize \$25 plus trophy. Also \$10 best game prize. All classes eligible.

1st Round 7:30 P.M. Friday April 28th, 1967 2nd Round 10:00 A.M. 3rd Round 5:00 P.M.
4th Round 10:00 A.M.; 5th Round 5:00 P.M., April 29 & 30 respectively,

ENTRY FEES: Championship Section - (12.00, Reserve Section (9.00 (U.S.C.F. membership (10.00 additional).

ENTRIES CLOSED 7:00 P.M. Friday, April 28th, 1967.

More on Metro Open

Tournament table shows several other League players participating:

Place	Name	Rating	Company	Score
9	W. Grombacher	1983	Hall Roto	3 1/2 - 1 1/2
11	J. Dotson	-----	Motorola	3 - 2
26	E. Pettigrow	-----	Teletype	2 - 3
42	N. Kellum	-----	Teletype	0 - 3

First Chicago Chess Club Open (February 17, 18, 19)

The tournament was won by dr. Martinowsky with 5 - 0 score. Out of 42 players participating in the championship section 5 had masters rating and there were 12 experts. A. Sandrin (ANL) shared thrid prize money in the championship section.

Championship section:

Place	Name	Rating	Company	Score
6	A. Sandrin	2133	ANL	4 - 1
18	V. Krohn	1805	ANL	3 - 2

Reserve Section:

Place	Name	Rating	Company	Score
15	T. Catledge	1492	WE	3 - 2
16	R. Ilzockie	-----	WE	2 1/2 - 2 1/2

Greater Chicago Open.

R. Verber gave up two draws to Wenzel and to Albert Sandrin to take clear first with seven points. E. Puto shared the class B second place with several other players.

Place	Name	Rating	Company	Score
6	A. Sandrin	2133	ANL	6 1/2
14	K. Czerniecki	2143	Bell & Howell	6
29	J. Warren	2011	WE	5
31	W. Grombacher	1955	H-R	5
36	J. Scherer	1916	ANL	5
42	N. Concheroff	1813	Motorola	5
43	V. Krohn	1807	ANL	5
65	E. Puto	1684	WE	4 1/2
76	J. Dotson	-----	Motorola	4
85	R. Niecek	-----	Motorola	4
101	A. Sodaro	1734	Motorola	3 1/2
106	W. Elliott	1824	WE	3 1/2
115	R. Pabijonas	1740	ANL	3
116	E. Pettigrow	1635	Teletype	3
137	J. Matek	1533	Sunbeam	2 1/2
144	T. Catledge	1492	WE	2

League Standings

Place	Team	Match Points	Game Points
1	ANL Knights	9 - 0	55½
2	Motorola	8 - 1	45
3	WE Chargers	5½ - 2½	40
4	Teletype	6½ - 3	36½
5	ANL Pawns	5 - 4	34½
6	ANL Bishops	4½ - 2½	31
7	Bell & Howell	4½ - 5½	40
8	WE Gambiteers	3 - 5	29½
9	Hall-Roto	2 - 5	20
10	Miehle, Goss, Dexter	1½ - 7½	24½
11	Ill. Bell Telephone	1 - 7	20½
12	Stewart-Warner/Sunbeam	1 - 7	20

SCORE SHEET

ANL Knights	6½	WE Gambiteers	1½	ANL Knights	5	Bell & Howell	3
J. Jackson	1	W. Elliott	0	D. Kucera	1	A. Czerniecki	0
D. Kucera	1	J. Sullivan	0	J. Scherer	1	S. Simon	0
J. Scherer	1	J. Nordtvedt	0	S. Mihailovich	1	T. Baker	0
S. Mihailovich	1	R. Rook	0	F. Helm	0	C. Clark	1
H. Ekstein	0	J. Fajkus	1	T. Tsang	1	A. Bartoli	0
T. Tsang	½	L. Schriener	½	H. Ekstein	0	S. Svigusaar	1
J. Wrobel	1	F. Shriner	0	M. Volpe	0	R. Kafka	1
M. Peterson	1	T. Catledge	0	M. Doyama	1	P. Krueger	0
ANL Pawns	7	M.G.D.	1	WE Chargers	5½	First Nat./A.E.	2½
E. Rudzitis	1	G. Kral	0	J. Warren	½	D. Anderson	½
J. Bingle	1F	Forfeit	0	F. Puto	1	D. McCluskey	0
H. Feder	1	G. Martiniak	0	D. Kumro	1	W. Barendsen	0
E. Veleckis	1	H. Mozur	0	C. Kubal	1	W. Flynn	0
E. Gasner	1	E. Strabac	0	M. Swiderski	0	D. Kowalski	1
P. Nelson	1	D. Anderson	0	J. Traeger	1	C. Simon	0
M. Foster	1	S. Baran	0	E. Biernat	0	R. McCullough	1
W. Yonko	0	H. Stutz	1	E. Balek	1	H. Notz	0
Ill. Bell	1	Bell & Howell	7	WE Gambiteers	2½	Bell & Howell	5½
K. Wollenberg	0	A. Czerniecki	1	Forfeit	0	A. Czerniecki	1
R. Racaitis	0	S. Simon	1	W. Elliott	1	C. Clark	0
R. Lauth	0	C. Clark	1	J. Fajkus	0	T. Baker	1
R. Doodly	1	A. Bartoli	0	L. Schriener	0	A. Bartoli	1
L. Farris	0	S. Svigusaar	1	W. Goranson	0	S. Svigusaar	1
Belton	0	T. Baker	1	E. Espe	0	S. Cynman	1
R. Skalina	0	R. Kafka	1	F. Shriner	1	H. Fucak	0
Inbody	0	P. Krueger	1	R. Mozockie	½	P. Krueger	½

South Suburban Chess News. The only local chess publication being issued once a month is the S. S. Chess News. In addition to giving the details of the activities of the South Suburban Chess League, it covers all local chess events, including our League activities. In order to be well informed, each club should subscribe to S. S. Chess News. The cost is \$3.00 annually. Send subscriptions to J. Toll, 271 Fir Street, Park Forest, Illinois, 60466.

SCORE SHEET - Continued

Teletype	4½	Hall-Roto	3½	WE Gambiteers	6½	Ill. Bell	1½
N. Jacobs	½	W. Grombacher	½	J. Sullivan	1	R. Lauth	0
E. Pettigrew	0	E. Kolodziej	1	W. Elliott	½	E. Kascaitis	½
L. Aldort	1	W. Paeskow	0	J. Fajkas	1	K. Wollenberg	0
J. Petlicki	0	C. Powers	1	R. Rook	1	R. Doody	0
C. Lantz	0	O. Mueksch	1	L. Schriener	½	L. Farris	½
M. Kellum	1	R. Kowalcic	0	T. Catledge	½	H. Gany	½
S. McHugh	1	R. Schoffeld	0	F. Shriner	1	R. Skodina	0
J. Norsyn	1	F. Simon	0	R. Mozockie	1	R. Buehrer	0
J. Gilmer	1	E. Kopriva	0	H. Cheek	1	F. Miller	0

Motorola	4½	Teletype	3½	M.G.D.	½	ANL Knights	7½
N. Goncharoff	0	N. Jacobs	1	G. Kral	½	J. Jackson	½
S. Butkoff	1	E. Pettigrew	0	S. Baran	0	D. Kucera	1
J. Neumark	0	L. Aldort	1	L. Stanfield	0	S. Mikhailovich	1
A. Sodaro	½	J. Petlicki	½	J. Maks	0	F. Helm	1
J. Dotson	1	C. Lantz	0	E. Strabec	0	T. Tsang	1
J. Hoglund	0	M. Kellum	1	G. Martiniak	0	J. Wrobel	1
R. Micek	1	S. McHugh	0	H. Stutz	0	M. Peterson	1
D. Rail	1	J. Gilmer	0	D. Anderson	0	M. Volpe	1
S. Linkowsky	1	J. Norsyn	0				

Motorola	5	WE Chargers	3	Teletype	2½	NL Bishops	5½
N. Goncharoff	0	J. Warren	1	N. Jacobs	0	A. Sandrin	1
S. Butkoff	0	T. Vikrikas	1	L. Aldort	0	V. Krohn	1
R. Ogasawara	0	E. Puto	1	J. Petlicki	½	R. Fabijonas	½
A. Sodaro	1	W. Hammerschmidt	0	E. Pettigrew	0	T. DeParry	1
J. Hoglund	1	E. Balek	0	M. Kellum	0	J. Froeklich	1
J. Dotson	1	K. Dobr	0	C. Lantz	1	A. Visser	0
R. Micek	1	V. Stamm	0	S. McHugh	0	F. Catania	1
D. Weinberger	1	M. Swiderski	0	J. Gilmer	1	E. Wallace	0
E. Czupryna	0	E. Balek	1				
G. Rail	1	J. Traeger	0				
M. Prothero	0	E. Rohrer	1				

Strowger Club	3	Marpar Clippers	5				
Anderton	1	Storer	0	<p>The Strowger Chess Club from Automatic Electric Laboratories visited the Mar - Par Chess Club and wound-up with the short end of scoring column. At present time the Automatic Electric Lab. is participating in League activities jointly with the First National Bank.</p>			
Djordjevic	0	Byvoets	1				
Rukuiza	1	Stellmokus	0				
Hurd	0	Draugalis	1				
Sasnan	0	Berg	1				
O'Toole	0	Hunter	1				
Barnius	0	Jensen	1				
Bloniarz	1	Wedder	0				

30 / 30 T O U R N A M E N T

Name	Rating	Company	Rd.1	Rd.2	Rd.3	Rd.4	Rd.5	Median/Solkoff
1 J. Warren	2011	WE	W14	W8	W7	W5	D2	4½ 14
2. C. Lee	1894	Guest	W15	W25	W23	W3	D1	4½ 12
3. V. Narkevicius	1915	Guest	W18	W76	W7	L2	W10	4 12½
4. W. Grombacher	1955	Hall	D23	W13	D5	W8	W7	4 12
5								
5. S. Mihailovich	1875	ANL	W20	W17	D4	L1	W9	3½ 13½
6. R. Micek	---	Mot.	L11	W28	W25	D13	W15	3½ 8½
8. V. Krohn	1807	ANL	W22	W11	L3	W23	L4	3 13
8. E. Puto	1655	WE	W23	L1	W15	L4	W21	3 12½
9. W. Elliott	1824	WE	W19	W21	L1	W16	L5	3 12 14
10. F. Tomcek	1635	Sunbeam	L25	W19	W11	W12	L3	3 12 13
11. M. Lajcik	---	Guest	W6	L7	L10	W20	W16	3 11½
12. N. Goncharoff	1813	Mot.	L17	W24	W18	L16	W19	3 9
13. D. Kumro	1754	WE	W24	L4	W17	D6	Withdrew	2½ 11
14. H. Warren	1583	Guest	L1	W26	L16	D17	W18	2½ 10½
15. A. Bartoli	---	Ditto	L2	W27	L8	W22	L6	2 13
16. A. Sodaro	1734	Mot.	W27	L3	W14	L9	L11	2 12½
17. J. Foglund	1494	Mot.	W6	L5	L13	D14	D24	2 11½ 13
18. J. Mlatek	1533	Sunbeam	L3	W22	L12	W25	L14	2 11½ 12½
19. R. Lauth	---	I. B. T	L9	L10	W27	W24	L12	2 10½
20. K. Wollenberg	---	I. B. T	L5	L23	W28	L11	W26	2 9
21. M. Leen	---	WE	W26	L9	L24	W28	L8	2 8½
22. T. Byvoets	1342	Guest	L7	L18	W26	L15	W25	2 8
23. R. Fabijonas	1740	ANL	D4	W20	L2	L7	N. P	1½ 13½
24. G. Pett	---	WE	L13	L12	W21	L19	D17	1½ 8½
25. B. Mozochic	---	WE	W10	L2	L6	L18	L22	1 13
26. M. Schumann	---	Sunbeam	L21	L14	L22	W27	L20	1 8½
27. J. Nordtvedt	---	WE	L16	L15	L19	L26	W28	1 7
28. J. F. Ryann	---	Sunbeam	L8	L6	L20	L21	L27	0

Prize Fund

1-st \$ 12.00; 2-nd \$8.00 J. Warren & C. Lee Tied At 4½ points; \$10.00 Each
 3-rd \$6.00; 4-th \$4.00 V. Narkevicius & W. Grombacher tied at 4 points, \$5.00
 5-th \$4.00 S. Mihailovich at 3½ points
 6-th thru 9-th \$2.00 5 players tied at three points. Each gets \$1.60
 V. Krohn, E. Puto, W. Elliott, F. Tomcek, N. Goncharoff

Top C or lower:

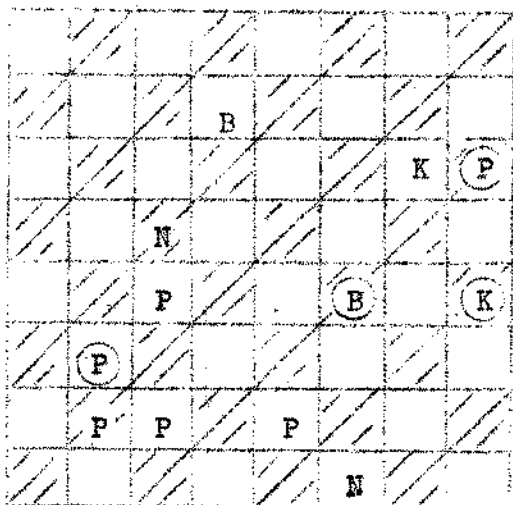
1-st \$6.00 R. Micek 3½ points: 2-nd \$4.00 M. Lajcik 3 points
 3-rd \$2.00 H. Warren 2½ points. 4-th \$2.00 Seven players
 tied at two points: A. Bartoli, J. Foglund, J. Mlatek, R. Lauth
 K. Wollenberg, M. Leen, T. Byvoets. Each gets \$0.30

Send problem solutions to J. WATSON, 5333 Woodland Ave., Western Springs, Ill., 60558. Solutions must be received before May 15.

Problem No. 11

Problem No. 12

Black



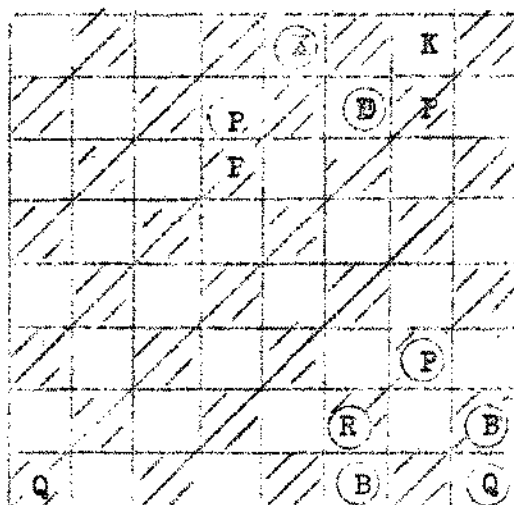
White

White to move and mate in four.

White: K at KN6
 B at Q7
 N at Q85, KB1
 P at QN2, QB2, QB 4, K2

Black: K at KR 5
 B at KB 5
 P at QN6, KR 3

Black



White

White to move and mate in four.

White: K at KN8
 Q at QR1
 P at Q6, KN7

Black: K at K1
 Q at KR8
 R at KB7
 B at KB3, KR7
 P at Q2, KB2, KN 6

Problem Solutions:

Problem No. 9 by W. T. Harding from British Chess Magazine, September 1926.

1. K-Q5. An extraordinary two-mover. The key self-pins a Rook and unpins Black's; it is however not a surprising one as White's Rooks are a bit out of the scene, especially that at B4. The variety is quite considerable and good.

Problem No. 10 by J. Halumbirek from "Schach", 1961.

"A problem of extreme refinement, that will cause the solver great difficulties. After 1 Q-Q3!, White threatens 2 Q-R6, Q-N6 3 K-R8, and 4 Q-B8 mate. Black parries as follows: 1 ... BxP, which enables him to bring the Q before the B (now, 2 Q-R6 if fails on ... Q-N6, etc.). After this "reputation" of the main idea however, White moves 2 Q-R3 to encounter 2... Q-N6 with 3 Q-Q6!! thus luring away Black's B from B2.

"It should be observed that 1 Q-B4 ? is inferior because of 1 ... Q-N6! (2 -R6, B-B1! 3 K-R8, K-B2!) and now White cannot continue with 2Q -R3 (threatening 3 PxQ, and if 2... B-Q3, then 3 QxB follows)."

Contest Standings:

1.	J. Bingle	9	9	M. Swiderski	6
2-4	W. Elliott	8	10-11	L. Shirley	5
2-4	A. Lux	8	10-11	K. Wollenkamp	5
2-4	H. Wettersten	8	12-14	J. Schloemer	2
5-8	N. Goncharoff	7	12-14	L. Stanfield	2
5-8	R. Garrett	7			
5-8	R. Miesek	7			
5-8	E. Puto	7			

The following is from Chess Life, February 1967.

A History-Making Tournament!

January 21-23, 1966: Boston, Massachusetts; United States of America, Planet Earth.

The Massachusetts Amateur Championship marks the very first time (in the world, as far as we know) that an electronic computer played chess against human beings under regular tournament conditions; time limit, Swiss-system pairings, touch-move, the works.

In the past, as everyone knows, computers have been programmed for chess playing, but only for scientific experimental purposes, and their opponents have usually been limited to the programmer and his colleagues. This time the computer was paired against rated chess players who were interested only in winning the game, not to demonstrate a scientific point.

The following is an excerpt from a report sent in by Benjamin Linsley, well-known New England chess organizer, and Tournament Director for this event.

"Aside from all the fun we had, and the joshing, the entry (of the computer) was part of serious scientific research.

"Technical advice (about chess, not computers) in the programming was given by Larry Kaufman, Baisley, and Wagner, all highly rated and all MIT students. Kaufman is an undergraduate. (Editor's note: He is also the winner of the recent American Open at Santa Monica. See the December CL.)

"The present programming makes of the computer a beginner. However, partly as a result of the experience in this tournament, the program will be improved.

"MacHack VI (the computer's name) played all five rounds and ended up with a game score of $\frac{1}{2}$ - $4\frac{1}{2}$. It was able to pull off a couple of pretty combinations but is very weak in the endgame.

"The chess program was written by Richard Greenblatt of MIT's Project Mac for the PDP-6 computer. It is hoped that it can play regularly in tournaments so that its strength can be more accurately compared to that of human beings.

"MacHack VI's current rating is a provisional 1239 (Class D). The computer's play is extremely erratic; witness the following games:

Carl Wagner (White); MacHack VI (Black). 1. P-KN3, P-K4; 2. N-N2, P-N3; 3. N-Q4, B-B4; 4. N-N3, B-N3; 5. B-N2, N-KB3; 6. P-QB4, P-Q3; 7. B-N3, B-N3; 8. P-Q5, PxP; 9. BxP, QN-Q2; 10. BxP, R-QN1; 11. B-N2, O-O; 12. O-O, B-N3; 13. Q-B2, R-K1; 14. P-Q4, P-B3; 15. B-K3, PxP; 16. Nxp, N-K4; 17. P-N3, B-Q2; 18. P-N3, B-QB4; 19. QR-Q1, Q-B1; 20. K-R2, N-N3; 21. B-N5, R-K4; 22. BxP, P-N3; 23. N-K4, P-B4; 24. N-B6ch, K-N2; 25. NxB, Q-N; 26. N-B6, QR-B1; 27. NxB, KxB; 28. Q-B3, P-B3; 29. R-Q3, R-K7; 30. R-Q2, R-B1; 31. QxR, N-K4; 32. P-Q1, Q-QB2; 33. B-Q5, K-N3; 34. P-QN4, B-N3; 35. Q-B2, N-B3; 36. B-K6, N-Q5; 37. BxP, B-N3; 38. BxPch, K-N2; 39. Q-N4ch, K-R3; 40. QxB, Q-K2; 41. Q-R4ch, K-N3; 42. B-B5ch, K-N2; 43. QxPch, K-B1; 44. Q-R8ch, K-B2; 45. Q-R8, Q-QB2; 46. Q-Q5ch, K-K2; 47. K-N2, Q-K2; 48. P-KR4, K-P3; 49. P-N4, K-N2; 50. P-R8, Q-K7; 51. P-R6ch, K-B1; 52. P-R7, QxBPch; 53. KxQ, K-K2; 54. P-R8(Q), P-R3; 55. Q-K6 mate.