

CHICAGO INDUSTRIAL CHESS LEAGUE BULLETIN

Vol. X

December 12, 1966

No. 3

Editor: R. Fabijonas, 9700 So. Cass Ave., Argonne, Ill. 60439

Chess Problems: J. Warren, 5333 Woodland Ave., Western Springs, Ill. 60558

"Chess is not, and can never be, a hobby. It is either a disease or nothing. It is an obsession, an affliction, an addiction. But it is not a hobby.

"EVERY chess player", an ironic friend of mine said recently, "should have a hobby." This was a neat epigram. Because those who are serious about the game soon become as single-minded as alcoholics; wife, family, job and other interests all become submerged in the chessboard.

I have largely given up playing the game because of its seductive powers. I used to urge others to take it up, but I no longer do so. The peril is too great. Some serious drinkers avoid becoming alcoholics; but no serious chess players ever avoid becoming chess nuts. What we need is secret organization called "Checkmates Anonymous."

STRICTLY PERSONAL

Sydney J. Harris

OOPS:

In addition to numerous spelling mistakes, page 2 of Bulletin No. 2 contained several errors. The team that BELL & HOWELL played and lost to was WE CHARGERS and not WE GAMBITEERS as reported. Meanwhile the HALL - ROTO lost to the WE GAMBITEERS by a score of 2 to 6 and not to the WE CHARGERS.

Your chairman, the editor and the secretary have red faces for all the mistakes.

TOURNAMENT LIFE:

1966 Illinois Open:

The listing of participating players published in Bulletin No. 1 should have included E. PETTIGREW from Teletype. Mr. Pettigrew placed 143rd scoring three points (one win, four draws and two losses).

The Illinois Chess Bulletin in discussing the Illinois Open mentions S. Mihailovich's, ANL (1876) loss to unrated P. Peters as an upset.

La Grange Open:

Thirty nine players participated in a rated tournament on November 5th and 6th. The list included two masters and twelve class A. players. Dr. Martinowsky (2203) won all five games to take first; R. Veber (2329) gave up a draw to L. Palucius (1987) to place second. The surprise of the tournament was dr. G. Hirsh (ANL), who came-in unrated and proceeded to win against two class A players and drew with T. McCormack (1946). In the fourth round he lost to dr. Martinowsky and in the fifth round lost to a former League member C. Lee (1859). His game with dr. Martinowsky is given on page 6.

Player	USCF Rating	Company	Score
E. Wilip	1326	ANL	3 - 2
G. Hirsh	---	ANL	2½ - 2½
G. Fett	---	W.E.	2 - 3
R. Garrett	---	Motorola	2 - 3
N. Goncharoff	1835	Motorola	2 - 3
R. Lauth	---	Ill. Bell	2 - 3
R. Micek	---	Motorola	2 - 3

NORTH-CENTRAL OPEN:

A. Sandrin (ANL) tied with masters R. Verber (2329), W. Martz (2343), A. Angos (2266) and K. Brasket (2263) for the first place at Milwaukee over the Thanksgiving Holidays. Each player won five and drew two games for a 6-1 score. J. Warren (WE) also played and had a 4-3 score.

JOIN U.S.C.F.:

Effective January 1, 1967, the U. S. Chess Federation membership dues will increase from \$5.00 to \$10.00 a year with 20% club discount in effect. Members can renew their membership or join the Federation at the old (\$5.00) rate before the first of the year.

Sustaining membership will increase from \$10.00 for ten years to \$20.00 for ten years. It has been rumored that members having sustaining membership or those joining before the first of the year will continue at the old rate of \$10.00 for ten years.

LEAGUE STANDINGS:

Place	Team	Match Points	Game Points
1	ANL Knights	5 - 0	30½
2	Teletype	4 - 1	28
3	WE Chargers	3½ - 1½	26
4	ANL Bishops	3½ - 1½	25
5	Motorola	3 - 1	18
6	ANL Pawns	3 - 3	22½
7	WE Gambiteers	2 - 1	16
8	Hall - Roto	2 - 2	17
9	Bell & Howell	2 - 2	15½
10	Miehle, Goss, Dexter	1 - 3	13½
11	Ill. Bell Telephone	0 - 4	9
12	Stewart-Warner/Sunbeam	0 - 4	8
13	First Nat. Bank/Chicago Title & Trust	0 - 4	2

CHAIRMAN'S CORNER:

Knights To Place First?

In the month of November we saw ANL KNIGHTS win over TELETYPE and MOTOROLA to remain the only undefeated team in the League. Their most recent win over ANL PAWNS indicates that the Knights are the team to beat. With J. Jackson (2003), D. Kucera (1960), J. Scherer (1886) and S. Mihailovich (1876) playing the top boards, followed by F. Helm (1557), V. Puchala (1540), T. Tsang, N. Beck, M. Volpe, T. Koppenaal and others it will take all out effort from the remaining teams on the schedule to stop them from winning.

Chicago Title & Trust:

The team merger between the Chicago Title and Trust Co. and The First National Bank of Chicago is not working out to everybody's satisfaction. In the three matches played so far the Chicago Title and Trust contributed only one player and only for a home match. As a result the team had to rely on players from the Bank. Thus far the First National Bank/Chicago Title and Trust team has been forced to forfeit 8 boards or 1/3 of the boards played. I hope that the situation will improve with their next match and we will see at least four players from Chicago Title and Trust playing all matches: home and away.

Forfeits:

Other teams are also having player problems. The Illinois Bell team forfeited two boards in four matches and the ANL Pawns three boards in six matches. The forfeits are hurting the League spirit and discouraging other players to show up for matches. Some forfeits are unavoidable: unforeseen events at the last minute prevent the players from appearing at the match. But majority of the forfeits are known in advance by the team captain. Surely every team captain must know on the day of the match how many players will show up. Therefore, it should be a common courtesy to call the opposing team and to inform them of a forfeit so that a player would not be forced to wait for couple hours or even to travel several miles to find out that there is no one to play.

Strowger Chess Club Interested In C.I.C.L.:

The Strowger Chess Club from the Automatic Electric Laboratories, Inc. has inquired about League activities and is considering in joining the League. Three of their members have U.S.C.F. ratings; two of them are R. Anderson (1631), A. Sodaro (1751) Teams interested in arranging matches should contact Mr. G. O'Toole, at 562-7100, Extension 594.

SCORE SHEET :

ANL PAWNS	5½	HALL - ROTO	2½	ANL BISHOPS	4½	ILL. BELL	3½
E.Rudzitis	½	E.Kolodziej	½	R.Fabijonas	0	G.Perez	1
G.Hirsch	1	B.Beeskow	0	T .De Parry	½	R.Racaitis	½
E.Gasner	0	C.Powers	1	E.Wilip	0	R.Leuth	1
E.Veleckis	1	D.Dolan	0	V.Kubilius	0	K.Wollenberg	1
J.Bingle	1	R.Kovalic	0	A.Visser	1	R.Doody	0
H.Feder	1	O.Mueksch	0	J.Froehlich	1	B.Lundeen	0
M.Foster	1	R.Schoefield	0	L.Shirkey	1	H.Gary	0
J.Graae	0	E.Hannett	1	F.Catania	1	D.Streit	0

SCORE SHEET (Continued)

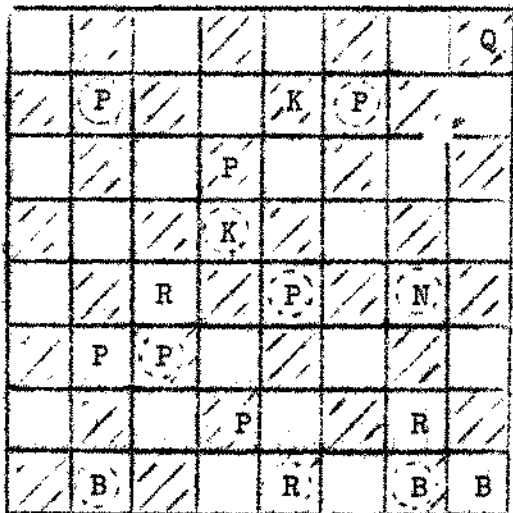
WE GAMBITEERS	8	F.N.B./CTT	0	ANL KNIGHTS	5½	TELETYPE	2½
J.Sullivan	1	D.Mc Cluskey	0	J.Jackson	½	N.Jacobs	½
W.Elliot	1	S.Gerson	0	D.Kucera	1	E.Pettigrew	0
J.Fajkus	1	D.Kowalsky	0	S.Mihailovich	1	J.Petlicki	0
L.Schriner	1	J.Jacobs	0	F.Helm	1	C.Lantz	0
M.Alojado	1	W.Flynn	0	V.Puchala	0	L.Aldort	1
F.Shriner	1F	Forfeit		T.Tsang	1	P.Carpenter	0
B.Mozockie	1F	Forfeit		M.Doyama	0	M.Kellum	1
T.Catledge	1F	Forfeit		R.Peterson	1	S.Mc Hugh	0
BELL & HOWELL	6	S-W/S	2	HALL - ROTO	4½	M.G.D.	3½
C.Clark	½	H.Williamson	½	E.Kolodziej	0	G.Kral	1
T.Baker	0	F.Tomecek	1	D.Dolan	1	S.Baran	0
A.Bartoli	1	A.Baumler	0	B.Beeskow	1	E.Martiniak	0
S.Svigussar	1	C.Luth	0	C.Powers	1	T.Morrisette	0
A.Czerna	½	A.Lux	½	O.Mueksch	1	H.Mazur	0
R.Kafka	1	L.Shearer	0	E.Hannett	0	J.Maks	1
P.Krueger	1	J.Upermanis	0	R.Carlgreen	½	E.Strabac	½
A.Strauss	1	R.Zollinger	0	F.Simon	0	H.Stutz	1
ANL KNIGHTS	6½	MOTOROLA	2½	ANL PAWNS	5	WE CHARGERS	3
D.Kucera	1	N.Goncharoff	0	G.Hirsh	0	J.Warren	1
J.Scherer	1	G.Bakakos	0	E.Rudzitis	1	K.Dopheide	0
S.Mihailovich	1	E.Czupryna	0	R.Wilson	1	E.Puto	0
T.Tsang	1	D.Weinberger	0	H.Feder	1	J.Sobun	0
K.Merkle	0	J.Hoglund	1	J.Bingle	1	K.Dobr	0
J.Wrobel	1	R.Micek	0	M.Foster	0	C.Kubal	1
N.Beck	½	R.Garrett	½	E.Gasner	1	V.Stamm	0
M.Doyama	1	C.Linkowski	0	Forfeit		M.Swidevski	1F
ANL PAWNS	4½	ANL BISHOPS	3½	WE CHARGERS	6½	HALL - ROTO	1½
R.Wilson	½	R.Fabijonas	½	J.Warren	½	E.Kolodziej	½
E.Rudzitis	1	V.Krohn	0	K.Dopheide	1	D.Dolan	0
E.Gasner	0	T.De Parry	1	E.Puto	1	B.Beeskow	0
G.Hirsh	1	E.Wilip	0	J.Traeger	0	C.Powers	1
E.Veleckis	0	V.Kubilius	1	K.Dobr	1	O.Mueksch	0
L.Baker	1	J.Froehlich	0	C.Kubal	1	R.Schofield	0
P.Nelson	1	Shirkey	0	M.Swidorski	1	E.Kopriva	0
Forfeit		F.Catania	1F	G.Fett	1	J.Gigante	0
ANL KNIGHTS	6½	ANL PAWNS	1½	TELETYPE	8	FNB/CTT	0
J. Jackson	½	E.Rudzitis	½	N.Jacobs	1	M.Mejzr	0
D.Kucera	1	R.Wilson	0	E.Pettigrew	1	Wm.Barndsen	0
J.Scherer	1	G.Hirsch	0	C.Lantz	1	J.Jacobs	0
S.Mihailovich	1	J.Bingle	0	L.Aldort	1	Wm.Flynn	0
F.Helm	1	H.Feder	0	M.Kellum	1	Forfeit	
T.Tsang	1	E.Gasner	0	J.Gilmere	1	Forfeit	
N.Beck	1	P.Nelson	0	S.McHugh	1	Forfeit	
T.Konnenall	0	E.Veleckis	1	P.Carpenter	1	Forfeit	

CHESS PROBLEMS:

Send problem solutions to J. WARREN, 5333 Woodland Ave., Western Springs, Ill., 60558. Solutions must be received before January 15, 1966.

Problem No. 5

Black



White

White to move and mate in two.

White: K-K7; Q-KR8; R-QB4, -KN2

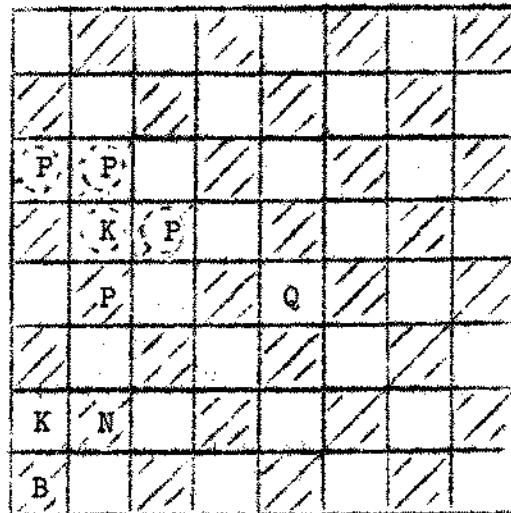
B-KR1; P-QN3, -Q2, -Q6

Black: K-Q4; R-K8; B-QN8; -KN8

N-KN5, P-QN2, -QB6, -K5, -KB2

Problem No. 6

Black



White

White to move and mate in three.

White: K-QR2; Q-K4;

B-QR1, N-QN2

Black: K-QN4

P-QR3, -QN3, -QB4

PROBLEM SOLUTIONS:

Problem No. 3: 1.K-N5

Problem No. 4: 1.QxNP KxP 2.Q-K2
 PxP 2.Q-K6
 P-B5 2.Q-N2
 P-Q6 2.Q-Q7

CONTEST STANDINGS:

1-7 J. Bingle	4 points	8-11 N. Goncharoff	3 points
1-7 W. Elliot	4 points	8-11 R. Micek	3 points
1-7 R. Garret	4 points	8-11 L. Shirkey	3 points
1-7 A. Lux	4 points	8-11 M. Swiderski	3 points
1-7 E. Puto	4 points	12-14 J. Schloemer	2 points
1-7 H. Wettersten	4 points	12-14 L. Stanfield	2 points
1-7 K. Wollenberg	4 points	12-14 V. Stamm	2 points

MEMBER GAMES:

The following game is from the La Grange Open where unrated dr. G. Hirsh (ANL) was holding master dr. E. Martinowsky (2203) to a draw until the last moment, when a serious blunder was committed by G. Hirsh. The notes are by the loser dr. Hirsh.

White Hirsh	Black Martinowsky	White	Black	White	Black
1. P-K4	P-QB4	If 17. BxN RxB and		Black cannot play	
2. N-QB3	N-QB3	Black gets Rook to		27. --- P-KN5	
3. N-KB3	P-KN3	KR4 in next two moves		28. --- P-B6	
4. B-N5	N-Q5			29. PxP PxP	
dr. Martinowsky commented after the game that he played N-Q5 against unrated player in order to force a quick win.		17. ---	Q-Q3	30. RxB RxB	
5. NxN	PxN	18. N-Q5	---	31. RxB# and mate on next move. White should have played 27 R-B6.	
6. N-K2	B-N2		Knight had to move	27. --- B-R6	
7. P-QB3	P-QR3	18. ---	P-KR3	28. R-B2 P-B6	
8. B-R4	P-K4	19. B-R4	P-N4 forks	29. P-K5 B-N7#	
9. P-Q3	N-K2		Bishop & Knight	30. K-N P-N6	
10. P-KB4	P-QN4	18. ---	NxN	31. KR-B2? R-N4!	
11. B-N3	P-Q3	19. BxN	K-R	32. B-N7?? ---	
12. O-O	O-O	20. B-KB4	B-K4	KP is lost but B-B4 would lock the game	
13. PxBP	PxBP	21. BxB	White Plays	32. --- RxB	
14. PxP	Q-N3		for a draw	33. BxB?? ---	
15. K-R	PxP	21. ---	QxB	B-B4 had to be played	
16. B-N5	R-R2	22. QR-B	P-B4	33. --- KR-K	
17. N-B4	---	23. Q-B3?	---	34. R-B8 RxB	
			Q-B2 followed by	35. RxB# K-N2	
			Q-B5 would have been	36. R-B2 R-K8#	
			much better	37. K-B2 R-KB8 mate.	
		23. ---	R-KN2		
		24. Q-B4	QxQ		
		25. RxB	P-N4		
		26. R/L-B	P-B5		
		27. P-KN3?	---		

The following shortie was played in an Argonne Annual Tournament between two Knights team members.

J. Wrobel White	M. Doyama Black	White	Black
1. P-Q4	P-Q4	9. R-KB3	P-QB4
2. P-K3	P-K3	10. P-QB3	P-QB5
3. B-Q3	N-KB3	11. B-QB2	P-QR4
4. N-Q2	B-Q3	12. P-QR3	P-QR5
5. P-KB4	P-QR3	13. R-KR3	B-K2
6. N-KB3	O-O	14. P-KN4	KN-Q2
7. O-O	P-KR3	15. P-KN5	PxP
8. N-K5	P-QN4	16. Q-KR5	Resigns

MEMBER GAMES (continued)

The following game was played on the first board between Motorola and Miehle, Goss, Dexter, Inc. As is befitting for the first board, the game ended in a draw.

The comments are by N. Goncharoff from the Motorola team.

White	Black	White	Black	White	Black
N.Goncharoff	G.Kral				
1. P-K4	P-QB4	11. B-K3	N-N3		Later moves showed that
2. N-KB3?	---	12. NxBP?	---		22. KR-K1 was a better
	It was my first		It was my first		move.
	psychological		regular mistake.	22. ---	B-N7
	mistake. Before the		The Pawn should	23. Q-B4#	B-Q4
	game began, I was		have been taken	24. Q-QB3	P-K5
	planning to use		with the Bishop	25. N-Q2	QR-K1
	P-KB4 as my second		instead of the	26. N-QB4	P-K6
	move against the		Knight.	27. PxBP	PxNP!
	Sicilian.			28. RxP	PxRP#
2. ---	P-K3	12. ---	P-KB4	29. K-B2	PxR
3. N-QB3	N-QB3	13. KN-KN5	R-B3!	30. N-Q6	Q-KN2
4. B-N5	P-QR3		If black Rook	31. P-K4	RxP
5. BxN	NfxB		went to K1, the	32. Nxr	BxN
6. P-K5	---		white Queen	33. Q-QN3#	B-Q4
	This move was made		would go to	34. Q-N8#	Q-B1
	for the purpose of		KR5 immediately.	35. QxRP!	QxRP#
	keeping the black	14. N-B3	N-B5	36. K-B1	B-B5#
	Pawns doubled.	15. BxN	BxB	37. R-K2	Q-KB4
6. ---	P-Q4	16. P-KN3	B-Q3	38. K-N1	BxR
7. PxB	BxP	17. P-Q4	BxN	39. QxB	Q-N4#
8. QN-K4	N-K2	18. PxB	P-K4	40. K-B2	Q-B5#
9. P-Q3	O-O	19. N-Q2	B-K3	41. K-N2	Q-N4#
10. O-O	Q-B2	20. N-N3	B-Q4		
		21. Q-K2	P-B5		
		22. QR-K1?			

D R A W

M E R R Y C H R I S T M A S

A N D

A H A P P Y N E W Y E A R !