

CHICAGO INDUSTRIAL CHESS LEAGUE BULLETIN

Vol. X

February 27, 1967

No. 5

Editor: R. Fabijonas, 9700 So. Cass Ave., Argonne, Ill. 60439

Chess Problems: J. Warren, 5333 Woodland Ave., Western Springs, Ill. 60558

THE FIRST NATIONAL BANK/CHICAGO TITLE AND TRUST TEAM WITHDRAWS:

Not being able to field an eight player team from the F. N. Bank and not receiving any player support from the Chicago Title and Trust, the team withdrew from the League competition. All scores against the F.N.B/C.T.& T. team will not be counted in the League standings.

The players from the F. N. Bank would like to continue participating in the League activities. For this reason they are teaming up with the Automatic Electric Laboratories chess club, which is also very interested in League play and the new team will continue playing the schedule on an unofficial bases. All teams who were scheduled to play FNB/CTT team are asked to play a friendly match with the First National Bank/Automatic Electric Laboratories team. Please make all arrangements with D. McCluskey of First National Bank.

30/30 TOURNAMENT

Our annual 30/30 tournament has been rescheduled for Saturday, April 1. This is an individual event open to League Members and their guests. Players from De Soto Chemical, Signode, Automatic Electric and Johnson and Johnson are also invited to participate. Register in advance with your team captain or league chairman if possible.

- Date:.....Saturday, April 1, 1967
- Place:.....Albright Gym, 5000 West Cermack Road
- Registration:.....8:30 to 9:00
- Entry Fee:.....\$2.00
- Type of Tournament:.....One-day 5 round Swiss, USCF rules (not rated)
- Time Limit:.....30 moves in first 30 minutes,  
20 moves in next 20 minutes,  
adjudication after 50 moves if necessary
- Chess Clocks and Sets:.....Bring mechanical chess clock if you have one.  
Also bring your own set.
- Prizes:.....All money from entry fees will be returned in  
cash prizes. About 25% of the participants will  
receive prizes.

We regret that the tournament could not take place on February 11 as scheduled, due to the closing of the Albright Gym. Hopefully the cancellation notices have reached everyone in time.

## TOURNAMENT LIFE:

Metro Open: The Teletype Chess Club had two participants in the METRO OPEN: E. Pettigrew had a 2-3 score while M. Kalkra finished with no wins and three losses.

## GREATER CHICAGO OPEN (March 11, 12, 18 and 19):

G.C.O. will be held at the Edgewater Beach Hotel, 5349 Sheridan Road, Chicago, Illinois 60640. The 8-round Swiss, USCF-rated, is sponsored by the Chicago Chess Foundation.

ENTRY FEES: For adults who register before March 11, the fee is \$13; otherwise, \$15. Similarly, juniors (under 19), \$8 before March 11, otherwise, \$10. Non-USCF entrants (adults) must pay an extra \$8 because the event is USCF-rated; non-USCF juniors, \$5 extra. Registration closes at 10 AM on March 11 at the Edgewater.

Mail entries to F. Skoff so they will reach him before March 11; or register in person at the Gompers Park C.C., 4224 W. Foster, on the Friday evenings of March 3 or 10. Make checks payable to the Chicago Chess Foundation. No phone registrations accepted.

NOTE: No one need lose his entry fee if he registers early and then finds himself unable to play for some reason. Your fee will be refunded if you notify the General Chairman at least one hour before the 1st round starts.

Entrants who stay at the Edgewater will be given the \$2 discount on their entry fee.

SCHEDULE: 11 AM & 6 PM on March 11, 12, 18; 10 AM & 5 PM on March 19.

HOTEL ROOMS: Be sure to identify yourself for the tourney at the desk to get special room rates; or phone 561-6000 for reservations.

TIME LIMIT: 45 moves in 2 hours, then 23 moves per hour.

PRIZE FUND: \$1150. The first 8 prizes are \$250, \$150, \$100, \$80, \$70, \$60, \$50 and \$40.

CLASS A: \$50 plus clock; 2nd, \$35

" B: \$40 plus clock; 2nd, \$25

" C: \$30 plus clock; 2nd, \$20

CLASS D: Clock

UNRATED: Book

WOMEN: Trophy

JUNIORS:

\$30 plus clock

2nd: \$20

Be sure to bring clocks and sets. At least 4 entrants must register in each category for a prize to be awarded.

SPECTATORS: \$1 per round as usual; \$1.50 per day; \$5 for all 8 rounds.

Register with: F. Skoff, 1400 W. Warner, Chicago, Ill.

## CHESS INSTRUCTIONS IN CHICAGO PARK DISTRICT:

Ralph Tobler Jr., current Illinois Junior Champion, is teaching chess on Monday, Wednesday & Friday (7-10) at Gompers Park Fieldhouse (4224 West Foster). For more information, call PE 6-4338. High school club sponsors may want to send their members to Ralph for instruction. No matter what your chess strength is, you're welcome to the classes. Ralph held a USCF masters rating.

## YOUNGSTERS NEED CHESS HELP

Fred Saberhagen (2959 N. Damen) wrote to F. Skoff: "I'm writing you on behalf of the kids at the Illinois Children's Hospital School, 1950 W. Roosevelt. A chess club has recently been started there, meeting on Tuesday evenings. I hope to do some work with it myself, but one or more additional adult volunteers would be good to have... Anyone proficient enough to have scored a point in a USCF tournament could be very helpful. The kids are all severely handicapped physically, but mentally they cover about the same range as any other group of Caisse's admirers... Anyone interested should get in touch with the School's lady in charge of volunteer workers (Miss Thompson: 341-6226). She's expecting some calls. I will be much obliged to you if you can pass on this information to the chessplayers of Chicago, or any group thereof."

### SUBURBAN CHESS LEAGUES:

There are two chess leagues in the suburbs engaged in spirited league competition.

**NORTH SHORE CHESS LEAGUE:** Highland Park, Waukegan, Chess Unlimited, Rogers Park, Evanston and Mt. Prospect are battling for the N.S.C. League trophy. They have a 48-60 board match scheduled with Gompers Park C.C. on May 12 at Gompers Park.

**SOUTH SUBURBAN CHESS LEAGUE:** Gary, Hammond, Park Forest, Kennedy Park, Metro C.C. comprise the League with J. H. Toll from Park Forest serving as president and A. Ross from Metro as a secretary. The S.S.C.L. is publishing a Chicagoland's South Suburban Chess News which is scheduled to become a monthly publication.

The big guns in the League are Vano (2245), Braden (1975) and Vilutis (1927) from Gary, Cox from Kennedy Park, Jones from Metro, Toll from Park Forest and others.

The winning team of the South Suburban C.L. is scheduled to play the winner in the North Shore C.L. They are also talking about All Stars from both Leagues fighting it out.

E. PETTIGREW and M. KELUM both from Teletype are members of the Metro C.C. and participate in the S.S.C.L. play.

### MEMBER GAMES

The December issue of Illinois Chess Bulletin has several games by League members. A. Sandrin (ANL) whose games regularly appear in the I.C.B. had three of his games from the Illinois Open, W. Grombacher (Hall-Roto), J. Sullivan (W.E.) and R. Fabijonas (ANL) had one game each.

### PROBLEM SOLVING CONTEST STANDINGS:

|       |                    |          |
|-------|--------------------|----------|
| 1     | J. Bingle.....     | 8 points |
| 2- 6  | W. Elliot.....     | 7 points |
| 2- 6  | R. Garret.....     | 7 points |
| 2- 6  | A. Lux.....        | 7 points |
| 2- 6  | E. Puto.....       | 7 points |
| 2- 6  | H. Wettersten..... | 7 points |
| 7- 8  | N. Goncharoff..... | 6 points |
| 7- 8  | R. Micek.....      | 6 points |
| 9-11  | L. Shirkey.....    | 5 points |
| 9-11  | M. Swiderski.....  | 5 points |
| 9-11  | K. Wollenberg..... | 5 points |
| 12-14 | J. Schloemer.....  | 2 points |
| 12-14 | L. Stanfield.....  | 2 points |
| 12-14 | V. Stamm.....      | 2 points |

## LEAGUE STANDINGS: (Feb. 22, 1967)

| Place | Team                    | Match Points | Game Points |
|-------|-------------------------|--------------|-------------|
| 1.    | ANL <i>Knights</i>      | 6 - 0        | 35½         |
| 2.    | Motorola                | 6 - 1        | 36½         |
| 3.    | WE Chargers             | 5½ - 1½      | 37          |
| 4.    | Teletype                | 4 - 1        | 25½         |
| 5.    | ANL Pawns               | 4 - 3        | 27½         |
| 6.    | ANL Bishops             | 3½ - 2½      | 25½         |
| 7.    | WE Gambiteers           | 3 - 3        | 25½         |
| 8.    | Bell & Howell           | 2½ - 4½      | 24½         |
| 9.    | Hall - Roto             | 2 - 4        | 18½         |
| 10.   | Miehle, Goss, Dexter    | 1½ - 5½      | 23          |
| 11.   | Stewart-Warner/Sunbeam  | 1 - 7        | 20          |
| 12.   | Illinois Bell Telephone | 0 - 6        | 11½         |

## SCORE SHEET:

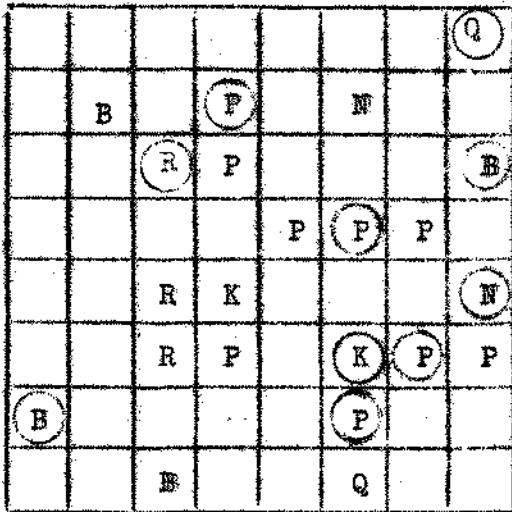
|                |    |              |    |              |    |               |    |
|----------------|----|--------------|----|--------------|----|---------------|----|
| Motorola       | 7  | Ill. Bell    | 1  | Hall Roto    | 5½ | Bell & Howell | 2½ |
| N.Goncharoff   | 1  | R.Racaitis   | 0  | W.Grombacher | 1  | C.Clark       | 0  |
| J.Hoglund      | 1  | K.Wollenberg | 0  | E.Kolodziej  | 1  | A.Bartoli     | 0  |
| S.Butkoff      | 1  | R.Lauth      | 0  | B.Beeskow    | 0  | S.Svigassar   | 1  |
| J.Neumark      | 1  | R.Doddy      | 0  | C.Powers     | ½  | T.Baker       | ½  |
| D.Weinberger   | 0  | G.Uhruh      | 1  | O.Mueksch    | 1  | D.Kafka       | 0  |
| R.Micek        | 1  | D.Streit     | 0  | D.D.Dolan    | 0  | H.Weibel      | 1  |
| R.Garrett      | 1F | Forfeit      |    | E.Hannett    | 1  | A.Strauss     | 0  |
| A.Curry        | 1F | Forfeit      |    | R.Carlgren   | 1  | A.Leef        | 0  |
| W.E.Gambiteers | 4½ | M.G.D.       | 3½ | W.E.Chargers | 6  | S-W/S         | 2  |
| J.Sullivan     | F  | G.Kral       | 1F | J.Warren     | 1  | H.Williamson  | 0  |
| W.Elliot       | 1  | S.Baran      | 0  | D.Kumro      | 1  | F.Tomecek     | 0  |
| J.Fajkus       | 1  | G.Martiniak  | 0  | E.Puto       | 1  | A.Baumler     | 0  |
| L.Schriner     | 0  | P.Bradley    | 1  | C.Kubal      | 1  | A.Kulak       | 0  |
| H.Wettersten   | 0  | E.Strabac    | 1  | K.Dobr       | 0  | R.Mariel      | 1  |
| F.Shriner      | ½  | H.Mazur      | ½  | J.Sobun      | 1  | E.Skopas      | 0  |
| T.Catledge     | 1  | H.Stutz      | 0  | J.Traeger    | 0  | A.Lux         | 1  |
| B.Mozockie     | 1  | F.Bialek     | 0  | M.Swidorski  | 1  | A.Spano       | 0  |
| ANL Pawns      | 5  | S-W/S        | 3  | Motorola     | 5½ | Hall - Roto   | 2½ |
| E.Rudzitis     | 1  | H.Williamson | 0  | N.Goncharoff | 0  | W.Grombacher  | 1  |
| R.Wilson       | 1  | F.Tomecek    | 0  | S.Butkoff    | 0  | E.Kolodziej   | 1  |
| J.Bingle       | 0  | A.Baumler    | 1  | R.Ogasawara  | 1  | D.Dolan       | 0  |
| H.Feder        | 1  | R.Mariel     | 0  | J.Neumark    | 1  | W.Beeskow     | 0  |
| E.Gasner       | 1  | M.Lachenmann | 0  | D.Weinberger | 1  | O.Mueksch     | 0  |
| M.Foster       | 0  | A.Lux        | 1  | J.Hoglund    | ½  | R.Schofield   | ½  |
| W.Walsh        | 0  | L.Shearer    | 1  | R.Micek      | 1  | R.Carlgren    | 0  |
| J.Graae        | 1  | A.Spano      | 0  | A.Curry      | 1  | F.Simon       | 0  |
|                |    |              |    | D.Rail       | 1  | E.Kopriva     | 0  |
|                |    |              |    | S.Linkowsky  | 1  | J.Gigante     | 0  |
|                |    |              |    | E.Czupryna   | 1  | Raymond       | 0  |

CHess PROBLEMS:

Send problem solutions to J. WARREN, 5333 Woodland Ave., Western Springs, Ill., 60558. Solutions must be received before March 24, 1937.

Problem No. 9

Black



White

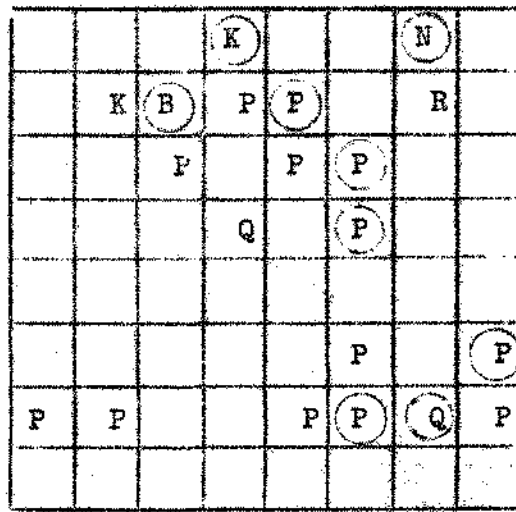
White to move and mate in two.

White: K-Q4, Q-KB1, R-QB3, -QB4, N-KB7  
P-Q3, -Q6, -K5, -KN5, -KR3  
B-QN7, -QB1

Black: K-KB6; Q-KR1; R-QB3; B-QR7; -KR3  
N-KR5; P-Q2, KB4, -KB7, -KN6

Problem No. 10

Black



White

White to move and mate in four.

White: K-QN7, Q-Q5, R-KN7,  
P-QR2, -QN2, QB6, -Q7, -K2,  
P-K6, -KB3, -KR2

Black: K-Q1; Q-KN7; B-QB2, N-KN1  
P-K2, -KB3, -KB4, -KB7, -KR6

PROBLEM SOLUTIONS:

Problem No. 7 by A. Mari from British Chess Magazine, Feb. 1928

1. B-K7 A most ingenious composition, remarkable in the play and mates.

Problem No. 8 by H. Ott from Schweizerische Schachzeitung 1959

Although all the contest participants were notified of the error, the editor of the Bulletin apologizes to the numerous friends, who tried to solve the problem in three moves. The correct solution was to be mate in seven.

It seems to be paradoxical that 1. R-B1! is the starting move in order to bring the R before the Q, but it is the correct solution: 1. P-N5, 2. Q-R4, 3. Q-R7, P-N4, 4. Q-N1, P-N5, 5. RxNch, BxRch, 6. P-Q3, K-R7, 7. Q-R7 mate. This is called the Lloyd-Turton theme which is a doubling of pieces on one line (a major piece behind a minor piece). In this case the removal of the Rook via a square of intersection (the Zepler idea). After 1. B-Q4ch, there follows 2. KxB, K-R7, 3. QxNch, K-N6, 4. R-B3ch, and it is this circumstance that eliminates the seemingly equivalent move 1. R-K1?

U.S.C.F. RATINGS:

The December issue of CHESS LIFE, which arrived in February, contains the Annual Rating List. It does not rate the ANL Spring Tournament nor the LaGrange Open where several League members participated. These events should be included in the next Rating List, which usually comes out three to four months later.

|     | Name          | Team      | Rating | Date    |
|-----|---------------|-----------|--------|---------|
| 1.  | A.Sandrin     | ANL       | 2133   | Dec. 66 |
| 2.  | J.Warren      | WE        | 2011   | Apr. 66 |
| 3.  | J.Jackson     | ANL       | 1973   | Dec. 66 |
| 4.  | D.Kucera      | ANL       | 1962   | Jan. 66 |
| 5.  | W.Grombacher  | Hall-Roto | 1955   | Dec. 66 |
| 6.  | J.Scherer     | ANL       | 1936   | Dec. 66 |
| 7.  | S.Mihailovich | ANL       | 1875   | Dec. 66 |
| 8.  | J.Sullivan    | WE        | 1872   | Dec. 66 |
| 9.  | E.Rudzitis    | ANL       | 1835   | Dec. 66 |
| 10. | W.Elliot      | WE        | 1824   | Jan. 66 |
| 11. | N.Goncharoff  | Motorola  | 1813   | Dec. 66 |
| 12. | V.Krohn       | ANL       | 1807   | Dec. 66 |
| 13. | D.Kumro       | WE        | 1754   | Jan. 65 |
| 14. | W.Beeskow     | Hall-Roto | 1753   | Dec. 66 |
| 15. | R.Fabijonas   | ANL       | 1740   | Dec. 66 |
| 16. | E.Puto        | WE        | 1684   | Jan. 66 |
| 17. | K.Dopheide    | WE        | 1655   | Jan. 66 |
| 18. | T.De Parry    | ANL       | 1649   | Dec. 66 |
| 19. | R.Wilson      | ANL       | 1649   | Jan. 66 |
| 20. | E.Pettigrew   | Teletype  | 1635   | Dec. 66 |
| 21. | F.Tomecek     | Sunbeam   | 1635   | Dec. 66 |
| 22. | F.Helm        | ANL       | 1557   | Jan. 66 |
| 23. | V.Puchala     | ANL       | 1540   | Dec. 66 |
| 24. | G.Perez       | Ill. Bell | 1520   | Jan. 66 |
| 25. | Goranson      | WE        | 1495   | Jan. 65 |
| 26. | J.Hoglund     | Motorola  | 1494   | Jan. 66 |
| 27. | T.Catledge    | WE        | 1492   | Dec. 66 |
| 28. | E.Wilip       | ANL       | 1351   | Dec. 66 |
| 29. | L.Stanfield   | Goss      | 1331   | Dec. 66 |
| 30. | K.Dobr        | WE        | 1326   | Jan. 65 |
| 31. | H.Wettersten  | WE        | 1200   | Jan. 65 |

LEAGUE RATINGS:

I will attempt to rate our games. The ratings will be calculated using USCF rating system. They will be based upon your performance against rated members during the last two seasons. Therefore it is very important to know all USCF rated members. If you had a rating during the last four years and your name does not appear in the above list, please let me know. The clubs that conducted local rated or unrated tournaments are also asked to submit tournament results. Only with your cooperation I will be able to rate all members properly.