

CHICAGO INDUSTRIAL CHESS LEAGUE BULLETIN

Vol. X

January 16, 1967

No. 4

Editor: R. Fabijonas, 9700 So. Cass Ave., Argonne, Ill. 60439

Chess Problems: J. Warren, 5333 Woodland Ave., Western Springs, Ill. 60558

30/30 TOURNAMENT

Our annual 30/30 tournament will be held on Saturday, February 11. This is an individual event open to League Members and their guests. Players from De Soto Chemical, Signode and Automatic Electric are also invited to participate. Register in advance with your team captain or league chairman if possible.

- Date:.....Saturday, February 11, 1967
- Place:.....Albright Gym Cermak & 50th
- Registration:.....8:30 to 9:00 A.M.
- Entry Fee:.....\$2.00
- Type of Tournament:.....One-day 5-round Swiss, USCF rules (not rated)
- Time Limit:.....30 moves in first 30 minutes,
20 moves in next 20 minutes,
adjudication after 50 moves if necessary
- Chess Clocks and Sets:..Bring mechanical chess clock if you have one. Also bring your own set.
- Prizes:.....All money from entry fees will be returned in cash prizes
About 25% of the participants will receive prizes

1964/65 TOURNAMENT:.....32 Players

- 1. A.Sandrin
- 2-5 N.Goncharoff
- 2-5 V.Narkevicius
- 2-5 M.Hamermesh
- 2-5 S.Mihailovich

1965/66 TOURNAMENT:.....22 Players

- 1. A.Sandrin
- 2-4 W.Grombacher
- 2-4 T.De Parry
- 2-4 V.Narkevicius

LEAGUE STANDINGS (1/11/67)

Place	Team	Match Points	Game Points
1.	ANL Knights	6-0	38½
2.	Teletype	5-1	33½
3.	We Gargers	4½-2½	30
4.	ANL Bishops	4½-2½	33
5.	Motorola	4 - 1	24
6.	ANL Pawns	3 - 3	22½
7.	Bell & Howell	2½-3½	22
8.	We Gambiteers	2 - 3	22½
9.	Hall - Roto	2 - 3	17
10.	Miehle,Goss, Dexter	1½-4½	19½
11.	Stewart-Warner/Sunbeam	1 - 5	15
12.	Illinois Bell	0 - 4	9
13.	First Nat. Bank/Chicago Title & Trust	0 - 4	2

SCHORE SHEET:

BELL & HOWELL	4	M.G.D.	4	ANL BISHOPS	6	M.G.D.	2
S.Svigussar	0	G.Kral	1	V.Krohn	1/2	G.Kral	1/2
T.Baker	1	L.Stanfield	0	T.De Parry	1	Bradley	0
G.Clark	1	E.Strabac	0	R.Fabijonas	1	Anderson	0
A.Bartoli	1	J.Maks	0	J.Froehlich	1	S.Baran	0
R.Kafka	0	Bradley	1	K.Burba	1	E.Strabac	0
U.Fucak	1	E.Martiniako	0	L.Shirkey	1/2	H.Mazur	1/2
A.Strauss	0	H.Mazur	1	F.Catania	0	J.Maks	1
A.Leef	0	N.Stutz	1	K.Kellogg	1	L.Stanfield	0
MOTOROLA	6	S-W/S	2	WE CHARGERS	5	WE GAMBITTEERS	3
S.Butkoff	1	F.Tomecek	0	J.Warren	1	J.Sullivan	0
J.Hoglund	1	C.Luth	0	D.Kumro	0	W.Elliot	1
J.Neumark	1	A.Baumler	0	K.Dopheide	0	L.Schriner	1
E.Czupryna	0	M.Lachen	1	E.Puto	1	J.Fajkus	0
R.Micek	1	A.Lux	0	A.Vikrikas	1	M.Alojado	0
A.Curry	1	A.Kulak	0	C.Kubal	1	F.Shriner	0
D.Rail	1	J.Uppermanis	0	K.Dobr	1	J.Kyrychenko	0
S.Linkowski	0	L.Shearer	1	M.Swidorski	0	R.Mozockie	1
M.Frothero	1	Novak	0	G.Fett	1	H.Cheek	0
S-W/S	4 1/2	WE GAMBITTEERS	3 1/2	ANL KNIGHTS	6	ANL BISHOPS	2
F.Tomecek	0	W.Elliot	1	D.Kucera	1	A.Sandrin	0
H.Williamson	1/2	J.Fajkus	1/2	J.Jackson	0	V.Krohn	1
A.Baumler	1	L.Schriner	0	S.Mikhailovich	1	R.Fabijonas	0
A.Kulak	1	R.Rook	0	J.Scherer	1	T.De Parry	0
R.Mariel	1	F.Shriner	0	F.Helm	1	J.Froehlich	0
A.Lux	1	E.Ramster	0	T.Tsang	1	E.Wilip	0
L.Shearer	0	R.Mozockie	1	M.Peterson	0	F.Catania	1
J.Uppermanis	0	J.Light	1	J.Wrobel	1	L.Shirkey	0
TELETYPE	5 1/2	BELL & HOWELL	2 1/2				
N.Jacobs	1	A.Bartoli	0				
C.Lantz	0	C.Clark	1				
L.Aldort	1/2	S.Svigussar	0				
M.Kellum	0	A.Czerna	1				
J.Gilmer	1	P.Krueger	0				
S.McHugh	1	A.Strauss	0				
J.Norsyn	1	C.Snyder	0				

ILLINOIS U.S.C.F. DIRECTORS:

The following is an excerpt from Illinois Chess Bulletin:

"Illinois has about 600 USCF members. Since we're allowed one USCF director for every 50, the state was allotted 12, selection being made by the most active state affiliate, after consideration of what the individual has done for chess (regularly held rated events, built strong USCF affiliates, etc.). In short, being chosen as a director is a recognition of your work in chess, an honor for having done well by the royal game...."

The term of office is one year. Probably the most important function of the directors is to vote for the national officers of the USCF & upon any other matters set forth at the directors meeting (held annually at each U S open).....The following people were selected by the ICA/CCF: Charles Brokaski; Jim Gibbs; Bob Kraft; Tom McCormack; Ed Peterman; Murrel Rhodes of Peoria; Frank Skoff; Lloyd Smith; Jay Toll; Dick Verber; James Warren; and Peter Wolf."

Congratulations are in order to Mr. James Warren of Western Electric, who also was League Chairman for the last two years.

ANNUAL AWARDS BANQUET

We have reserved Friday, June 9th, 1967, as the awards banquet date. The reservation is at the Old Prague Restaurant, 5928 West Cermak Road. Mark your calendars and let us make this the biggest banquet in League history. Details will be announced later.

We are grateful to Mr. Walter Elliot for making these arrangements.

TELETYPE ELECTS OFFICERS

The Teletype Chess Club has elected C.C. Lantz to be the chairman of the club. Other officers are L. Aldort - vice chairman; M. Kellum - secretary and treasurer; L. Pettele - ex chairman.

Make all arrangements with C C. Lantz 676-1000 Ext. 6466.

TOURNAMENT LIFE:

Greater Chicago Open: Reserve March 11 and 12, 18 and 19 for this tournament at the Edgewater Beach Hotel. Each rated League member should take part to make this the largest tournament in the U.S.

Chicago Chess Club Announces 1967 Schedule:

The Chicago Chess Club's 1967 tournament schedule will consist of six (6) U.S.C.F rated five round week-end Swiss tournaments. The 1st, 2nd, 3rd, 4th and 5th rounds of all tournaments will start at 7:30 P.M., 10:00 A.M., 5:00 P.M., 10:00 A.M. 5:00 P.M., respectively, with the 1st round on Friday, 2nd and 3rd on Saturday, and the 4th and 5th on Sunday.

Scheduled dates for the first three are as follows:

- 1st 1967 Chicago Chess Club Open.....Feb. 17, 18th, 19th.
- 2nd " " " " " April 28th, 29th, 30th.
- 3rd " " " " " June 9th, 10th, 11th.

These tournaments will be in two sections. Prizes for the Championship Section will be 1st \$100.00, 2nd \$75.00, 3rd \$50.00, 4th \$25.00, and Class A trophy. Championship Section will be open to players of all classes. The Reserve Section will be open to Class B players and lower with trophies for Class B, C, Junior, and Unrated. Additional cash prizes will be awarded with the trophies depending on the number of entrants.

Entry Fee - \$10.00. The Chicago Chess Club is one of the strongest clubs in the Midwest. It is located at 64 East Van Buren Street, Chicago, Ill. 60609.

CHAIRMAN'S CORNER

ANL Knights Continue Winning.

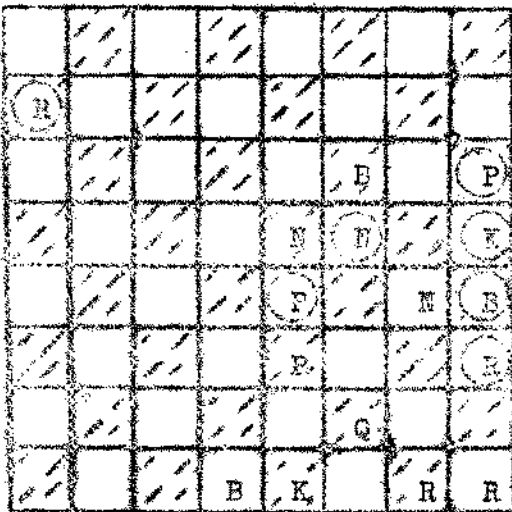
In the match between ANL Bishops and Knights both teams had their top six players and some good substitutes on the bottom boards, but the Knights won the match by a wide margin of 6-2. D. Kuccera (1962) scored an upset against A. Sandrin (2107). The only bright note on the Bishops team was V. Krohn (1807) who defeated J. Jackson (2004).

CHESS PROBLEMS:

Send problem solutions to J. WARREN, 5233 Woodland Ave., Western Springs, Ill. 60558. Solutions must be received before February 13, 1967.

Problem No. 7

Black



White

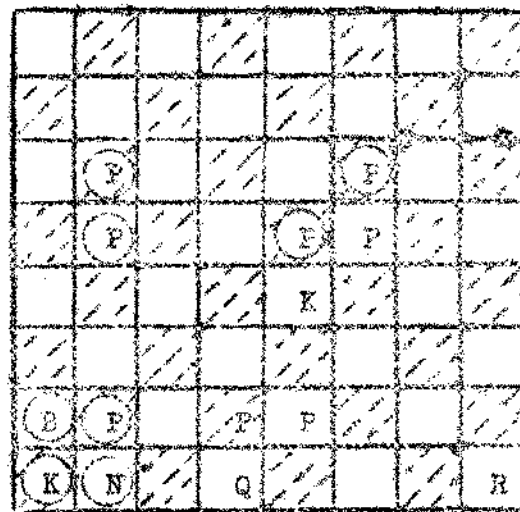
White to move and mate in two.

White: K-K1; Q-KB2; B-KN1, -KR1
B-Q1, -KB6; N-K5, -KN4; P-K3

Black: K-KR4; R-QR2, -KR6; B-KB5;
N-KB4; P-K5, -EP3

Problem No. 8

Black



White

White to move and mate in three.

White: K-K4; Q-Q1; R-ER1;
P-Q2, -K2, -KB5

Black: K-QR3; B-QB7; N-QN8;
P-QN3, -QN4, -QN7, -K4, -KB3

PROBLEM SOLUTIONS:

Problem No. 5 1.P-Q4

Problem No. 6: 1.N-R4 ExN 2.Q-QB4!
B-R4 2.N-B3 #
P-B5 2.Q-N8 #
Pxf 2.K-N3