

G2954
G2934

CHICAGO INDUSTRIAL CHESS LEAGUE BULLETIN

VOL. X

November 7, 1966

No. 2

Editor: R. Fabijonas, 9700 S. Cass Ave., Argonne, Ill. 60439

Chess Problems: J. Warren, 5333 Woodland Ave., Western Springs, Ill. 60558

LEAGUE STANDINGS:

Place	Team	Match Points	Game Points
1	Teletype	3 - 0	17½
2	Motorola	3 - 0	16½
3	ANL Bishops	2½ - ½	17
4	WE Chargers	2½ - ½	16½
5	ANL Knights	2 - 0	12
6	Hall - Roto	1 + 1	8½
7	WE Gambiteers	1 + 1	8
8	Miehle, Goss, Dexter	1 - 2	10
9	Bell & Howell	1 - 2	9½
10	ANL Pawns	0 - 2	6
11	First Nat./Chicago Title & Trust	0 - 2	2
12	Stewart-Warner/Sunbeam	0 - 3	6½
13	Illinois Bell Telephone	0 - 3	5½

SCORE SHEET:

WE Chargers	6½	Ill. Bell	1½	Teletype	5½	M.D.G., Inc.	2½
J. Warren	1	G. Perez	0	N. Jacobs	1	G. Kral	0
D. Kwiro	½	R. Racaitis	½	E. Pettigrew	1	S. Baran	0
K. Dopheide	1	R. Lauth	0	J. Petlicki	1	L. Stanfield	0
E. Puto	1	K. Wollenberg	0	C. Lantz	1	E. Martiniak	0
K. Lohr	0	R. Doody	1	L. Aldort	0	H. Mazur	1
J. Traeger	1	G. Cermak	0	M. Kellum	½	E. Strabac	½
C. Kubal	1	J. Suss	0	S. McHugh	1	D. Wypijewski	0
M. Swidevski	1F	Forfeit	0F	M. Petts	0	H. Stutz	1
Bell & Howell	5	ANL Pawns	3	ANL Knights	7½	Ill. Bell	½
A. Bartoli	0	E. Rudzitis	1	D. Kucera	1	G. Perez	0
C. Clark	1	L. Baker	0	S. Mihailovich	1	R. Racaitis	0
A. Czerna	0	G. Hirsch	1	F. Helm	1	R. Lauth	0
T. Baker	1	E. Gasner	0	V. Puchala	½	R. Doody	½
P. Krueger	1	H. Feder	0	N. Beck	1	G. Unruh	0
S. Szigussar	1	J. Bingle	0	T. Tsang	1	H. Gary	0
U. Fucak	0	E. Veleckis	1	M. Doyama	1	J. Suss	0
A. Strauss	1	P. Hunt	0	R. Govednik	1F	Forfeit	0F

SCORE SHEET (continued)

ANL Bishops	5½	S-W/S	2½	Motorola	6	WE Gambiteers	2
V. Krohn	1	H. Williamson	0	N. Goncharoff	0	J. Sullivan	1
R. Fabijonas	1	F. Tomecek	0	S. Butkoff	½	W. Elliot	½
T. DeParry	0	A. Baumler	1	R. Ogasawara	1	H. Serdoz	0
E. Wilip	½	M. Lachenmann	½	J. Neumark	½	J. Fajkus	½
A. Visser	1	A. Lux	0	D. Weinberger	1	L. Schriener	0
J. Froehlich	1	L. Shearer	0	J. Hoglund	1	F. Shriner	0
S. Zielinski	0	J. Uppermanis	1	R. Micek	1	W. Goranson	0
K. Kellogg	1	Stromberg	0	R. Garret	1	R. Gniedek	0
F. Catania	1	R. Zollinger	0	S. Linkowski	0	T. Catledge	1
<i>Chargers</i> WE Gambiteers	6	Bell & Howell	2	<i>Gambiteers</i> WE Chargers	5½	Hall - Roto	2
K. Dorheide	1	C. Clark	0	J. Sullivan	0	E. Kolodziej	1
E. Puto	1	T. Baker	0	W. Elliot	1	D. Dolan	0
J. Kraeger	0	A. Bartoli	1	H. Serdoz	1	C. Powers	0
K. Dohr	1	S. Sviggussar	0	L. Schriener	½	B. Beeskow	½
J. Sobun	0	A. Czerna	1	F. Shriner	½	E. Hannett	½
V. Stamm	1	J. Strem	0	W. Goranson	1	R. Schofield	0
C. Kuba	1	P. Krueger	0	R. Gniedak	1	R. Calgren	0
M. Swiderski	1	A. Stauss	0	T. Catledge	1	J. Muller	0
Motorola	5	M.D.G., Inc.	3	Teletype	7½	S-W/S	½
N. Goncharoff	½	G. Kral	½	N. Jacobs	1	F. Tomecek	0
R. Ogasawara	1	S. Baran	0	E. Pettigrew	1	C. Luth	0
A. Curry	1	E. Martiniak	0	J. Petlicki	1	A. Baumler	0
J. Neumark	½	J. Maks	½	C. Lantz	1	M. Lachenmann	0
J. Hoglund	1	H. Mazar	0	L. Aldort	1	F. Skopas	0
D. Weinberger	1	E. Strabac	0	M. Kellum	1	A. Lux	0
R. Micek	0	H. Stutz	1	S. McHugh	1	L. Shearer	0
R. Garret	0	D. Wypijewski	1	P. Carpenter	½	J. Uppermanis	½
S. Linkowski	1	L. Stanfield	0	J. Gilmore	1	R. Pease	0
E. Czupryna	1	T. Morrissette	0				
ANL Bishops	7½	F.N.B./C.T.T.	½	DeSoto Chemical	3½	Ill. Bell	3½
V. Krohn	1	D. McCluskey	0	E. Zychowski	0	G. Perez	1
A. Visser	1	D. Kowalski	0	E. Packer	0	R. Racaitis	1
L. Shirkey	½	R. Freedman	½	P. Sirgedas	½	R. Lauth	½
K. Burba	1	L. Haydter	0	A. Brandau	1	W. Gallagher	0
K. Kellogg	1F	Forfeit	0	C. Gaudin	1	C. Weatherly	0
R. Fabijonas	1F	Forfeit	0	R. Souders	1	D. Streit	0
J. Froehlich	1F	Forfeit	0	J. Snyder	0	H. Gary	1
F. Catania	1F	Forfeit	0				

At the start of the season DeSoto Chemical was considering in joining the League, but decided to wait a year. In the meantime they are trying to get accustomed to the match play. The score above shows their first attempt against Illinois Bell. Teams interested in playing against DeSotto Chemical should get in touch with Mr. V. Villalobos at RO 2-5000.

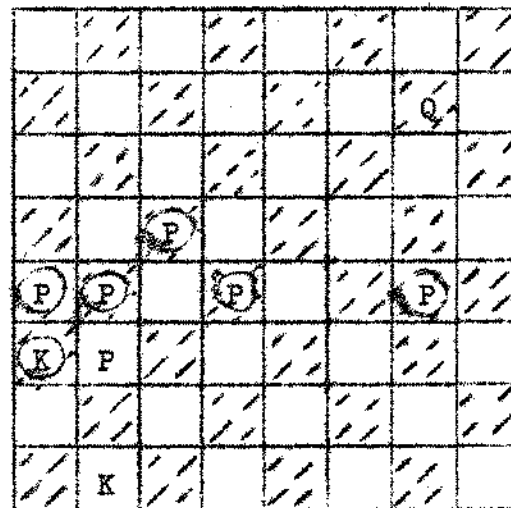
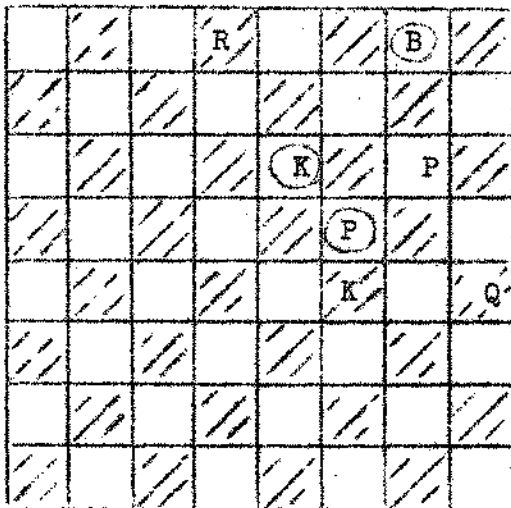
Send problem solutions to J. WARREN, 5333 Woodland Ave., Western Springs, Ill., 60558. Solutions must be received before November 30, 1966.

Problem No. 3

Problem No. 4

Black

Black



White

White

White to move and mate in two.

White to move and mate in three.

White: K-KB4; Q-KR4; R-Q8, P-KN6

White: K-QN1; Q-KN7; P-QN3

Black: K-K3; B-KN1; P-KB4

Black: K-QR6; P-QR5; -QN5; P-QB4, -Q5, -KN5

PROBLEM SOLUTIONS:

Problem No.:1 1.B-N8

Problem No.:2 1.Q-R6

CONTEST STANDINGS:

1-10	J. Bingle	2 points
1-10	W. Elliot	2 points
1-10	R. Garret	2 points
1-10	A. Lux	2 points
1-10	R. Micek	2 points
1-10	E. Puto	2 points
1-10	L. Stanfield	2 points

1-10	M. Swiderski	2 points
1-10	K. Wollenberg	2 points
1-10	H. Wettersten	2 points
11-13	N. Gencharoff	1 point
11-13	J. Schloemer	1 point
11-13	L. Shirkey	1 point