

STANDINGS

	W	L	POINTS
1. ANL BISHOPS	5	0	31 $\frac{1}{2}$
2. ANL PAWNS	4 $\frac{1}{2}$	1 $\frac{1}{2}$	31
3. W E GAMBITEERS	5	1	32
4. W E CHARGERS	4 $\frac{1}{2}$	1 $\frac{1}{2}$	31 $\frac{1}{2}$
5. MOTOROLA	3 $\frac{1}{2}$	1 $\frac{1}{2}$	24
6. HALL-PETTIBONE	4	2	33
7. ANL KNIGHTS	3	2	24 $\frac{1}{2}$
8. ILL. BELL TEL	2 $\frac{1}{2}$	3 $\frac{1}{2}$	25 $\frac{1}{2}$
9. 1st NAT'L BANK	2	3	19 $\frac{1}{2}$
10. PERMA-POWER	1	3	15
11. GOSS PRINTERS	1	3	10 $\frac{1}{2}$
12. TELETYPE	1	4	12 $\frac{1}{2}$
13. S/W-SUNBEAM	0	12	4 $\frac{1}{2}$

KUMRO'S KORNER

MISSING RESULTS:

ANL BISHOPS (Home) VS. TELETYPE RD. 4

GOSS PRINTERS (Home) VS. HALL-PETTIBONE RD. 5

NEW CONTACT! :

PERMA-POWER

JOE BREE 539-7171 (Direct)

Starting with Bulletin #5 Match results WILL NOT be included in the current standings unless official score sheet is received. (Responsibility of home team captain, see Bulletin #2 for where to send results). Individual game results will not be published unless received within 3 weeks after round closes. (1 week in cases of postponed matches).

Dwight Kucera of the Argonne Knights had his undefeated string ended when Jim Sullivan of the WE GAMBITEERS played a fine game to provide the stopper. I believe this was Dwight's first loss in League play. Congratulations to Jim Sullivan! The game score is on page 3

~~THE~~ S/W-Sunbeam has withdrawn from league play. We look forward to having them back next season. Hugh Williamson of Stewart & Warner was the League's first chairman. A top notch organizer and fine gentleman we're all hoping to see him back soon!

PROBLEM CORNER

STANDINGS (As of 12-17-67)

POINTS

1-4.	W. Elliott	6	Due to the holidays, solutions on 5 & 6 will be accepted with postmarks dated the 19th of DEC. And will be included in next month's standings.
	N. Goncharoff	6	
	J. Sienkiewicz	6	
	K. Wollenberg	6	
5-7.	J. Bingle	5	
	E. Puto	5	
	M. Swiderski	5	
8-9.	R. Doody	2	
	H. Wettersten	2	
10.	M. Lachermann	1	

Solution to No. 5 Fred Springer Chess Review Feb. 1937. 1. PXP e. p.
 Solution to No. 6 S. Loyd, CHESS Oct. 21, 1960

1. N-N4ck K-R8, 2 Q-R2ck
 K-R6, 2 N-R2
 K-B6, 2 Q-B2
 K-B8, 2 R-QR8

"The checking key, which is none too easy, is more than atoned for by three quiet variations and a

queen sacrifice. There can be little doubt that this is one of the finest miniatures ever composed." CHESS, DEC. 10, 1960.

RESULTS

ANL PAWNS 7		GOSS PRINTERS 1		ANL KNIGHTS 5		PERMA-POWER 3	
E. Rudzitis	1	0	E. Strabach	D. Kucera	1	0	R. Paz
J. Scherer	1	0	J. Kolba	J. Jackson	1	0	J. Bree
R. Wilson	1	0	G. Martiniak	J. Wrobel	1	0	C. Willmott
H. Feder	$\frac{1}{2}$	$\frac{1}{2}$	P. Bradley	M. Peterson	1	0	G. Arbetman
L. Baker	1	0	S. Baran	M. Volpe	1	0	H. Feldman
M. Foster	1	0	J. Maks	F	0	1	J. Balthazor
H. Veleckis	1	0	H. Stutz	F	0	1	A. Rocco
W. Walsh	$\frac{1}{2}$	$\frac{1}{2}$	L. Stanfield	F	0	1	C. Church

Pawns do it without a loss!

Just like Basketball Knights dump'em with 5

ANL BISHOPS 5 ILL. Bell TEL 3 ANL PAWNS 6 WE CHARGERS 2

V. Krohn	1	0	R. Lauth	E. Rudzitis	0	1	J. Warren
T. DeParry	1	0	K. Wollenberg	J. Scherer	1	0	E. Puto
F. Stetter	1	0	R. Racaitis	R. Wilson	1	0	D. Kumro
K. Burba	1	0	J. Malone	S. Zawadski	1	0	C. Kubal
A. Visser	0	1	R. Doody	H. Feder	0	1	K. Dobr
L. Shirkey	1	0	G. Unruh	J. Bingle	1	0	V. Stamma
F. Catania	0	1	R. Buehrer	V. Puchala	1	0	R. Berry
E. Wallace	0	1	J. Inbody	E. Veleckis	1	0	M. Swiderski

Almost another Bell upset!

Pawns deal Chargers worst defeat in over a year!

WE GAMBITEERS 5 $\frac{1}{2}$ 1st NAT'L BANK 2 $\frac{1}{2}$

W. Elliott	1	0	W. Nyman
R. Rook	1	0	K. Salkaukas
A. Pehas	1	0	E. Bermantas
T. Kolczak	1	0	M. Mejzr
E. Schriner	0	1	D. McCluskey
M. Wettersten	0	1	S. Gerson
F. Shriner	1	0	R. O'Connor
R. Mozockie	$\frac{1}{2}$	$\frac{1}{2}$	R. Buchanan

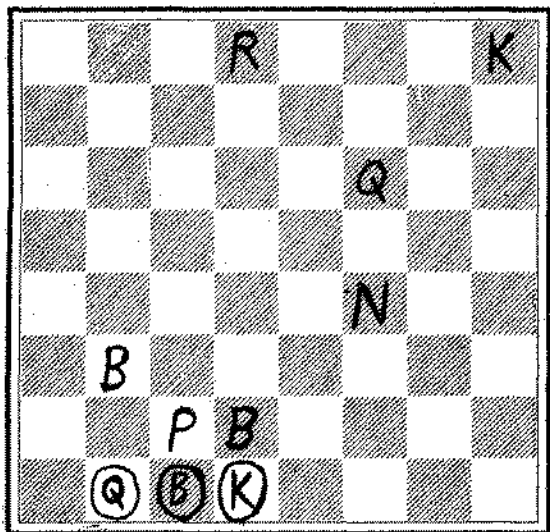
Good to see the BANK'S old timers back!

1 P-Q4	N-KB3	22 N-K7	QxR	43 B-N4	K-N3
2 P-QB4	P-KB3	23 BxQ	BxQ	44 P-Q5ch	K-B2
3 N-QB3	B-N2	24 NxB	B-B1	45 N-N5ch	K-B1
4 P-K4	P-Q3	25 BxP	N-B1	46 B-B6	N-Q2
5 B-N5	Q-O	26 K-N2	N-Q2	47 B-K7ch	K-N2
6 Q-Q2	Qx-Q2	27 K-N3	P-QR4	48 P-N5	R-QB6
7 P-B4	P-B4	28 N-K4	K-N2	49 B-K6	R-B3
8 P-Q5	P-QB3	29 P-N5	RxP	50 B-Q5	N-N3
9 N-B5	Q-B2	30 RxP	P-N5	51 N-K5ch	K-N2
10 B-Q5	P-N5	31 B-K2	RxP	52 N-N5ch	K-N2
11 Q-O	RxP	32 RxP	R-R1	53 B-K6	B-Q2
12 KxP	P-KB3	33 NxP	R-R6	54 B-Q3	R-B3ch
13 B-N4	N-R2	34 B-Q1	P-B4	55 K-K5	R-K5ch
14 Qx-K1	NxR-B3	35 RxR.p.ch	RxP	56 K-Q4	BxB
15 P-NR3	B-Q2	36 N-K5ch	K-B2	57 NxBch	RxN
16 P-KN4	P-QN4	37 BxP	R-R3	58 BxN	RxPch
17 P-QB3	P-N5	38 B-EN4	R-QN3	59 K-B5	R-Q6
18 N-K4	NxN	39 B-K5ch	K-N2	60 P-N4	K-B2
19 NxB	KR-K1	40 B-B5ch	K-B1	61 K-B6	K-N3
20 R/1-K1	B-B6	41 P-N4	N-N6	62 B-B7	R-Q5
21 RxBch	BxR	42 K-B4	K-N2	63 P-B5	R5B3G5

NO. 7

BLACK

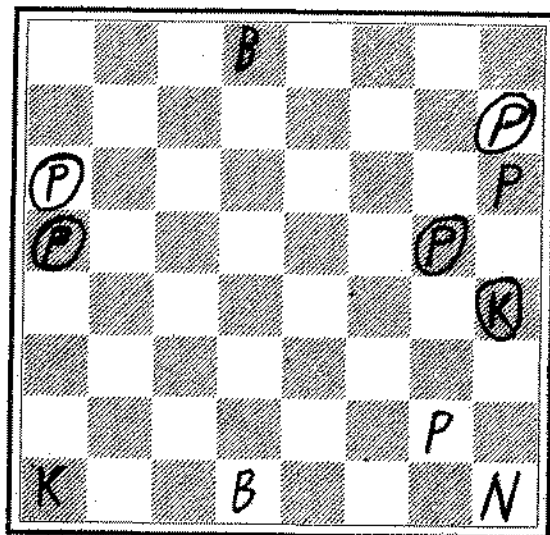
CIRCLED



WHITE

NO. 8

BLACK



WHITE

NO. 7 White To PLAY
 AND MATE IN TWO

White
 K at KR8
 Q at KB6
 R - Q8
 B - QN3, Q2
 N - KB4
 P - QB2

BLACK
 K at Q8
 Q - QN8
 B - QB8

DEADLINE JAN 14

NO. 8 White To PLAY
 AND MATE IN SEVEN

White
 K-QR1
 B-Q1
 B-Q8
 N-KR1
 P-KN2, KR6

BLACK
 K-KR5
 PAWNS AT
 QR3, QR4, KN4
 KR2