

STANDINGS				PROBLEM STANDINGS		
	W	L	POINTS			
1. ANL BISHOPS	7 $\frac{1}{2}$	- 1 $\frac{1}{2}$	49 $\frac{1}{2}$	W. ELLIOTT	10	WE
2. ANL PAWNS	7 $\frac{1}{2}$	- 1 $\frac{1}{2}$	53	N. GONCHAROFF	10	Motorola
3. WE CHARGERS	7 $\frac{1}{2}$	- 1 $\frac{1}{2}$	49	J. SIENKIEWICZ	10	WE
4. WE GAMBITEERS	8	- 2	50	J. Bingle	9	ANL Pawns
5. HALL PRINTING	6	- 2	45	E. Puto	8	WE
6. ANL KNIGHTS	4 $\frac{1}{2}$	- 3 $\frac{1}{2}$	38 $\frac{1}{2}$	K. Wollenberg	8	Ill Bell
7. MOTOROLA	4 $\frac{1}{2}$	- 3 $\frac{1}{2}$	38	M. Swiderski	5	WE
8. ILL BELL TEL	4 $\frac{1}{2}$	- 5 $\frac{1}{2}$	39 $\frac{1}{2}$	R. Doody	2	Ill Bell
9. TELETYPE	2	- 5	21 $\frac{1}{2}$	H. Wettersten	2	WE
10. 1st NAT'L BANK	2	- 6	24 $\frac{1}{2}$	M. Lachenmann	1	S/W- SUN Beam
11. GOSS PRINTERS	1	- 6	14			
12. PERMA-POWER	1	- 7	20			
13. S/W-SUNBEAM	0	- 12	4 $\frac{1}{2}$			

KUMRO'S KORNER

DON'T FORGET !! APRIL 27, 1968 "THE LEAGUES" 30/30 TOURNAMENT.

NEW DEPARTMENT NUMBER FOR THE CHAIRMAN MAIL ALL RESULTS TO DEPT. 509330 INSTEAD OF G2933 ~~42933~~ DON'T FORGET

IT'S 509330 -

As we go to press at this late date in the season (with only a few rounds remaining) it's still anybody's ball game!

5 teams still have a chance for the CHAMPIONSHIP !! The schedule matches the 5 leaders several times. The BISHOPS play the CHARGERS and the PAWNS (and Motorola too!), the PAWNS must tackle the Bishops of course and try to stop the Gambiteers (who are having a much better season than last year). The CHARGERS meet HALL and the Bishops, and the GAMBITEERS play the Pawns and Hall. HALL PRINTING must meet both of the WE teams and has to stop the KNIGHTS (who are breathing down their necks). Of course with only a $\frac{1}{2}$ in the loss column the BISHOPS are the team to stop! !

This year it looks like Motorola has it's work cut out for them in trying to snatch another trophy! Better get cutting Nik!

Congratulations to ILL BELL TEL! ! They are having their best season ever! They drew a match with one of the leaders (the Pawns) and had only 5 men to do it with. They also knocked off the strong Motorola team. A lot of credit must go to RAY LAUTH who is their chief organizer and team captain. With 2 matches to go they can still finish with a .500 percentage or better.

Chess Mid-America needs your subscriptions NOW!! \$5.00 per year mailed monthly. Send to 271 Fir Street Park Forest, Ill. This is a fine Chess periodical for the Mid-west but can't survive without your subscriptions. SEND NOW !

RESULTS

TELETYPE	3	WE GAMBITEERS	5	MOTOROLA	7 $\frac{1}{2}$	GOSS PRINTERS	$\frac{1}{2}$
N. Jacobs	1	0	J. Sullivan	N. Goncharoff	1	0	G. Kral
L. Aldort	1	0	W. Elliott	P. Greenspan	1	0	F. Bialek
J. Klemm	0	1	A. Pehas	A. Sodaro	1F	0F	P. Bradley
C. Lantz	0	1	T. Kolczak	J. Neumark	1	0	H. Stutz
J. McHugh	1	0	L. Schriner	R. Micek	$\frac{1}{2}$	$\frac{1}{2}$	E. Strabac
J. Gilmer	0	1	F. Shriner	D. Rail	1	0	H. Mazur
R. Goranson	0	1	R. Mozockie	J. Mach	1	0	L. Stanfield
F. Schram	0	1	E. Ramsten	G. Rail	1	0	J. Bekea

Hard fought battle by TELETYPE

Strabac saves a SHUTOUT !

ILL BELL TEL	2	ANL KNIGHTS	6	ANL PAWNS	3	HALL-PRINTING	5
R. Racaitis	0	1	D. Kucera	E. Rudzitis	1	0	K. Dopheide
R. Lauth	0	1	S. Mihailovich	R. Wilson	1	0	E. Kolodziej
J. Malone	0	1	F. Mueller	V. Puchala	0	1	W. Beeskow
R. Doody	0	1	J. Wrobel	J. Bingle	0	1	C. Powers
G. Unruh	0	1	M. Peterson	M. Foster	0	1	D. Dolan
J. Peterson	1	0	D. Dever	H. Feder	0	1	O. Mueksch
K. Selander	1	0	B. Lukasik	L. Baker	1	0	D. D'Alessandro
FORFEIT	0	1	W. Harkreader	W. Walsh	0	1	R. Schofield

Knights too much for BELL

1st loss for PAWNS (W. Walsh on 7)

WE CHARGERS	6	PERMA-POWER	2	1st NAT'L BANK	2	ANL BISHOPS	6
J. Warren	1	0	R. Paz	FORFEIT	0	1	V. Krohn
E. Pute	0	1	C. Willmott	D. McCluskey	0	1	T. DeParry
D. Kumro	1	0	J. Arbetman	F	0	1	C. Christenson
C. Kubal	1	0	J. Bree	D. Johnson	1	0	J. Dawson
K. Dobr	1	0	J. Balthazor	L. Haydter	1	0	A. Visser
E. Balek	1	0	R. Trejo	F	0	1	F. Catania
R. Berry	0	1	J. Halsen	F	0	1	K. Kellogg
M. Swiderski	1	0	H. Feldman	F	0	1	E. Wallace

Closer than the score indicates

5 FREE ones for the BISHOPS

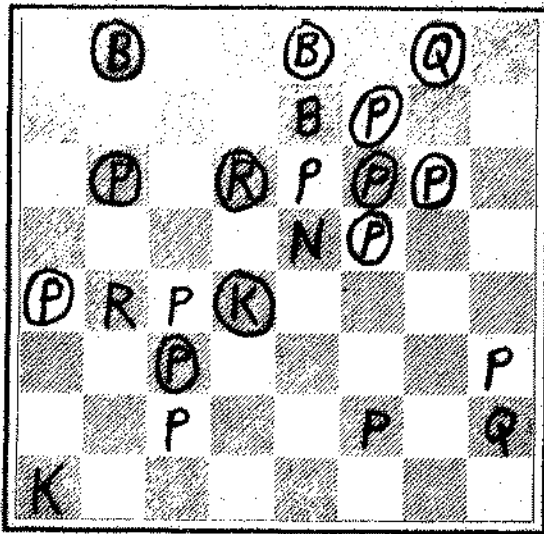
MOTOROLA	3 $\frac{1}{2}$	WE GAMBITEERS	4 $\frac{1}{2}$	ANL PAWNS	8	PERMA-POWER	0
Goncharoff	0	1	W. Elliott	E. Rudzitis	1	0	C. Willmott
P. Greenspan	1	0	J. Fajkus	R. Wilson	1	0	J. Bree
R. Ogasawara	0	1	A. Pehas	V. Puchala	1	0	J. Balthazor
J. Neumark	1	0	T. Kolczak	M. Foster	1	0	R. Trejo
R. Micek	$\frac{1}{2}$	$\frac{1}{2}$	L. Schriner	H. Feder	1	0	J. Halsen
D. Rail	1	0	F. Shriner	L. Baker	1	0	Mary Torma
G. Rail	0	1	R. Mozockie	E. Veleckis	1F	0F	C. Church
Mach	0	1	T. Catledge	W. Walsh	1F	0F	H. Feldman
Prothero	0	1	E. Rodavicius				
D. Lewandowski	0	1	H. Cheek				

A SHUTOUT !

GAMBITEERS grab a close one !

No. 11

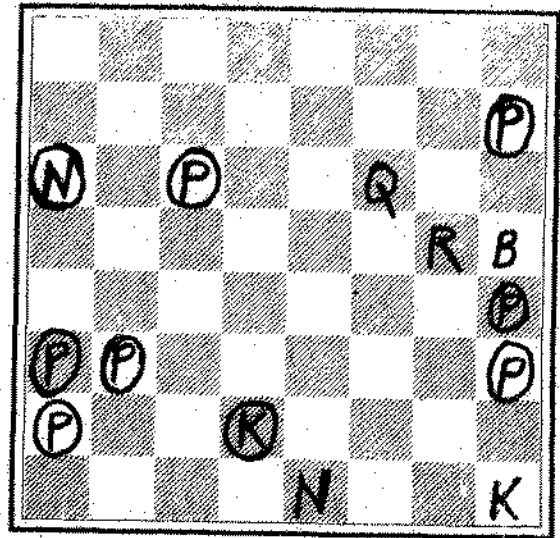
BLACK



WHITE

No. 12

BLACK



WHITE

White to move and mate in 3

Solutions must be received by April 8th.

WHITE

No. 11 K at QR1, Q at KR2, R at QN4
B at K7, N at K5, Pawns at
QB2, QB4, K6, KB2, KR3

BLACK

K at Q5, Q at KN1, R at Q3
B at QN1, K1 Pawns at QR5,
QN3, QB6, KB2, KB3, KB4, KN3

White to move and mate in 3

WHITE

No. 12 K at KR1, Q at KB6
R at KN5, B at KR5, N at K1

BLACK

K at Q7, N at QR3, Pawns at
QR6, QR7, QN6, QB3, KR5
KR6, KR2

Solutions to 9 & 10

No. 9 by G. V. Korbschofer, B. C. M. June 1927

1 B-R7 K-K6 2 Q-B8
KxP 2 B-B5

No. 10 by R. Lespold, B. C. M. August 1927

1 N-R1 P-R7 2 Q-R8
KxN 2 Q-N7
K-R7 2 N/K2-N3ck
K-B8 2 N/K2-N3ck
K-B6 2 Q-N7

WE CHARGERS 7 ILL BELL TEL 1

J. Warren	1	0	R. Lauth
E. Puto	1	0	R. Racaitis
D. Kumro	1	0	J. Malone
K. Dopheide	0	1	R. Doody
C. Kubal	1	0	F. Schulz
K. Dobr	1	0	J. Peterson
V. Stamm	1	0	K. Selander
G. Fett	1	0	L. Farris

EVENT Tautvaisas Simultaneous Exhibition

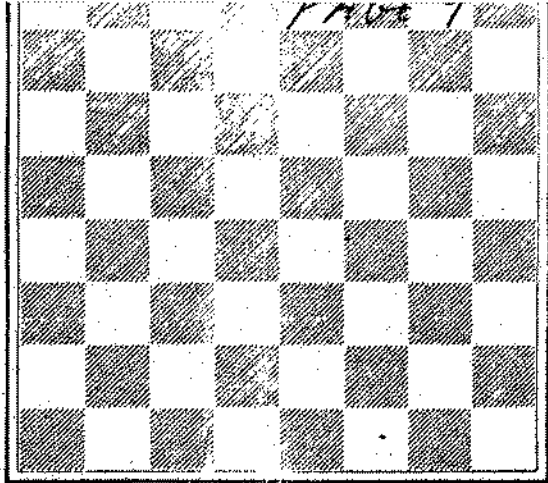
DATE June 2, 1967 ROUND _____ BOARD _____

WHITE Paul Tautvaisas - [REDACTED]

BY W. N. Elliott - WESTERN ELECTRIC

Opening: ~~THE ADJOURNED~~ French Defence

WHITE _____ BLACK _____



POSITION AFTER MOVE

WHITE	BLACK	WHITE	BLACK	WHITE	BLACK	
P-K4	1	P-K3	R-KR3	24	R-Q5	47
P-Q4	2	P-Q4	P-B4	25	Q-KB4	48
N-Q2	3	P-QB4	RXB	26	R-Q8+	49
KPXP	4	QXP	K-R2	27	N-N5+!	50
N-KB3	5	N-QB3	QXN	28	QXQ	51
B-B4	6	Q-Q1	P-QB5	29	Q-B4	52
O-O	7	N-KB3	B-K2	30	R-QN8	53
Q-K2	8	NXP	R-Q2	31	QXQBP	54
NXN	9	PXN	R(R)-Q3	32	P-KB3	55
N-N5	10	B-K2	B-R4	33	P-KN4	56
R-Q1	11	O-O	PXP	34	PXP	57
NXP	12	Q-N3	BXP	35	QXB	58
P-QB3	13	B-Q2	R-KN3	36	R-KR8+	59
B-K3	14	Q-B2	R resigns	37		60
N-N5	15	BXN		38	It's not after 61 that a	
BXB	16	B-Q3		39	class A player wins a queen	
B-KN5	17	BXP+		40	from a master 63 even in	
K-R1	18	B-K4		41	exhibition play. 64 Here Mr.	
R-Q3	19	N-Q4		42	Elliott gives up 65 2 pieces	
Q-N4	20	Q-B4		43	to turn the trick. 66 Walt	
P-QB4	21	N-B3		44	plays a fine game 67 to score	
Q-R4	22	BXP		45	the fall point against 68 master	
R-QN1	23	KR-Q1		46	P. Tautvaisas	