

CHICAGO INDUSTRIAL CHESS LEAGUE BULLETIN

Vol. XII

December 13, 1968

No. 4

Editor & Publisher: Nick Goncharoff- Motorola, Inc.  
9401 W. Grand Ave.  
Franklin Park, Ill. 60131  
Na 5-6000 ext. 2230

Problems: James Warren- 5333 Woodland Ave.  
Western Springs, Ill. 60558

Congratulations to new management of Teletype team (Frank Tegel) and First National Bank team (Donald Kowalski). I wish both of you success in your hard work in weeks to come.

I might as well continue with congratulations to Jim Warren and Tim Catledge for their representation of our league in the North Central Open held during the Thanksgiving Day holidays in Milwaukee. Both of them ended with  $4\frac{1}{2}$ - $2\frac{1}{2}$  score. Tim won class B trophy, and Jim managed to get a draw from master Ivan Theodorovich.

The membership of "forfeit club" increased from five last month to eight as of December 13, 1968. The leader is First National Bank with 13 points. I hope under new management this problem will be corrected.

On page 8 of this bulletin you will find up-to-date league rating. Jim Warren promises to supply it regularly for our bulletin. Any question about rating should be directed to Jim.

It came to my attention that a well known chess player in Chicago area, a former member of our league, Mr. K. Czerniecki is interested to play in our league again. But he needs our help. If anyone of you know of any job opening, let me know or call Mr. Czerniecki after 6PM on 489-3648. He is interested in shipping, receiving or expediting. But he is not too choosy, any reasonable job will be all right for the start.

At this point I want to wish you A MERRY CHRISTMAS and a HAPPY NEW YEAR!

CICL STANDINGS

Place	Team	W-L	Points
1	ANL Knights	4-0	24
2	WE Gambiteers	5-1	33½
3	WE Chargers	3-1	20½
4	Goss Co.	3-1	18
5	Motorola	2½-1½	19½
6	Teletype	2-2	17
7	ANL Pawns	1½-1½	13½
8	Chas. Bruning Co.	1-1	7½
9	Ill. Bell Tel.	1-2	9½
10	ANL Bishops	1-3	12½
11	Hall Printing	1-4	14
12	Perma-Power	0-3	4
13	1st Nat'l Bank	0-4	5½

Results

Hall Printing 1	Motorola 7	Hall Prntg. 2	Teletype 6
Kolodziej C	Goncharoff 1	E. Kolodziej 0	F. Tegel 1
Beeskow O	Sodaro 1	C. Powers 0	N. Jacobs 1
Mueksch O	Micek 1	B. Beeskow 0	L. Aldort 1
D'allessandro O	Bujalski 1	C. Mueksch 1	J. Gilmer 0
Schofield 1	Winberger 0	J. D'allasandro 0	J. Klemm 1
Zak O	Rail 1	R. Schofield 1	F. Schram 0
Kopriva C	Osak 1	R. Zak 0	W. Davis 1
Compton O	LeTourneau 1	H. Smith 0	K. Tanaka 1F
Perma Power 1½	Argonne Knights 6½	WE Gambit. 6	Ill. Bell 2
R. Pat O	D. Kucera 1	W. Elliott 1	R. Lauth 0
C. Willmott ½	S. Mihailovich ½	T. Catledge 1	R. Racaitis 0
B. Bidukas O	E. Butler 1	A. Pehas 1	K. Wollenberg 0
J. Gardberg O	I. Goroff 1	R. Rook 1	J. Malone 0
R. Soble O	D. Dever 1	L. Schriener 0	R. Doody 1
J. Helson O	J. Harkreader 1	R. Mozockie 1	C. Carney 0
J. Stephan 1	S. Ockers 0	F. Shriner 0	G. Unruh 1
F OF	M. Volpe 1F	E. Radavicius 1	E. Kelly 0

C, Bruning Co. 5	1st Nat. Bank 3	WE Gambiteers 6	ANL Bishops 2
P. Miller O	D. McCluskey 1	J. Sullivan 1	V. Krohn O
A. Czerna O	R. Buchanan 1	W. Elliot 1/2	C. Christensen 1/2
S. Gawron O	D. Kowalski 1	W. Goranson O	T. De Parry 1
D. Snowdon 1F	F OF	A. Pehas 1	R. Fabijonas O
I. Spalis 1F	F OF	L. Shriner 1	D. Girens O
A. Digulio 1F	F OF	T. Catledge 1	D. Wilip O
G. Petihakes 1F	F OF	F. Shriner 1/2	J. Dawson 1/2
S. Szczesniak 1F	F OF	B. Mozockie 1	F. Catania O

Hall-Pettibone 1	ANL Bishops 6	Teletype 5 1/2	Arg. Bishops 2 1/2
E. Kolodziej O	V. Krohn 1	Tegel 1	V. Krohn O
D. Dolan O	T. De Parry 1	Jacobs 1	T. De Parry O
C. Powers O	C. Christensen 1	Aldort 1/2	C. Christensen 1/2
O. Muersch O	D. Givens 1	Petlicki 1	J. Dawson O
R. Schofield O	J. Dawson 1	Lantz O	R. Walker 1
F. Simon O	A. Visser 1	Gilmer O	D. Givens 1
R. Carlgren 1	F. Catania O	Bastian 1	A. Visser O
F. OF		Klemm 1	G. Dickerson O

Goss Co. 1	Hall-Petg. 7	Motorola 3 1/2	WE Chargers 4 1/2
G. Kral 1/2	E. Kolodziej 1/2	N. Goncharoff 1/2	J. Warren 1/2
P. Bradley 1/2	C. Powers 1/2	A. Sodaro O	D. Kumro 1
H. Stutz O	W. Beeskow 1	R. Micek 1	E. Puto O
J. Vaks O	O. Mueksch 1	G. Rail 1/2	K. Dobr 1/2
E. Strabac O	R. Schorfield 1	J. Bujalsky 1/2	V. Stamm 1/2
H. Tazur O	H. Smith 1	D. Weinberger 1	J. Thomas O
G. Martiniak O	R. Zak 1	G. Chievhuco OF	E. Balek 1F
F OF	F. Simon 1F	G. Letourneau O	J. Treager 1

CURRENT GAMES.

The following game was played on board #1, Nov. 6, 1968.

Nik Goncharoff (Motorola)		Jim Warren (W.E.)	
White	Black	White	Black
1. KP-K4	P-QB4	14. P-B3	QxP(B4)
2. P-KB4	P-K3	15. B-K3	Q-Q3
3. N-KB3	P-Q4	16. O-O	R-K1
4. B-N5 ch	N-QB3	17. Q-B3	B-R3
5. PxQP	PxP	18. KR-Q1	Q-B2
6. Q-K2 ch	B-K2	19. P-QN4	N-K5
7. N-K5	Q-N3	20. B-Q4	P-KB3
8. QN-B3	N-KB3	21. N-Q3	BxN
9. QN-R4	Q-B2	22. RxB	R-K2
10. QNxBP	O-O	23. R-K3	R(1)-K1
11. BxN	PxB	24. R(1)-K1	Q-N2
12. P-Q4	BxN	25. Q-B1	R-K3
13. PxB	Q-R4 ch		Draw

KNOW YOUR RULES! Here is a practical example from board #8, played on Nov. 20, 1968. Find the rule which black overlooked.

Gene LeTourneau (Motorola)		Bill Compton (Hall Printing)	
White	Black	White	Black
1. P-K4	P-K4	14. Q-N6 ch	K-B1
2. N-KB3	P-Q3	15. N-R4	Q-K1
3. B-Q3	N-QB3	16. R-K3	P-KR4
4. O-O	N-KB3	17. R-KB3	R-R3
5. N-QB3	P-QR3	18. BxR	QxQ
6. B-QB4	B-K3	19. NxQ ch	K-B2
7. BxB	PxB	20. NxB	PxB
8. P-Q4	P-KR3	21. N-B5	P-K5
9. P-Q5	PXP	22. R-B4	K-N3
10. NxF	NxF	23. N-K7 ch	K-N4
11. R-K1	N-B3	24. P-KN3	P-KR5
12. Q-Q3	N-K2	25. RxP	R-K1
13. NxN(K7)	BxN	26. P-KB4	
			mate!?

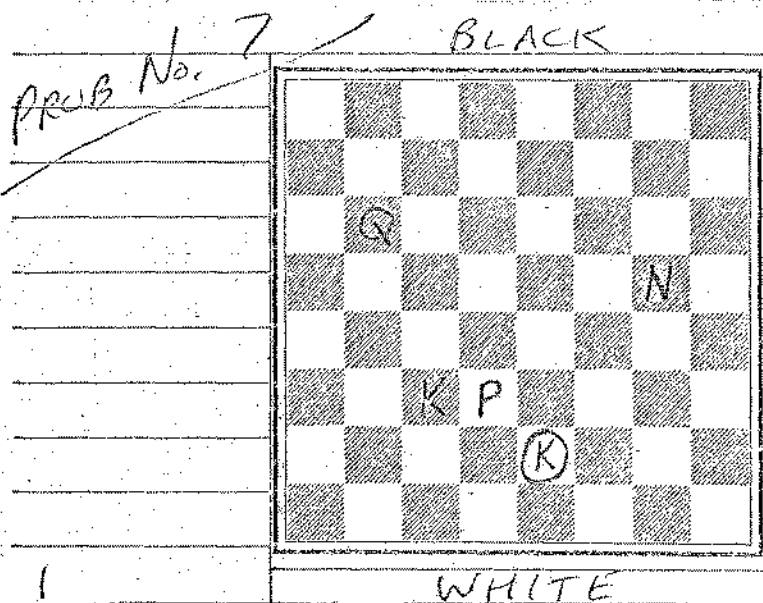
The following game was played on board #2, Nov. 26, 1968.

Jacobs (Teletype)	De Parry (ANL Bishops)		
White	Black	White	Black
1. P-Q4	N-KB3	11. PxP	B-N2
2. P-QB4	P-K3	12. Q-K2	PxP
3. N-KB3	P-Q4	13. PxP	B-R3
4. N-QB3	P-QN3	14. P-QR3	N-B3
5. P-K3	B-K2	15. B-Q3	NxP?
6. P-QN3	O-O	16. NxN	QxN
7. B-Q3	P-B4	17. N-Q5!	Q-B4
8. B-N2	N-B3	18. BxN	BxB (a)
9. O-O	N-QN5	19. Q-K4	R-Q1 (b)
10. B-N1	QPxP	20. QxP ch	and mate next
(a) if 18.---	PxB	(b) if 19.---	P-N3
19. NxB ch	QxN	20. NxB ch	K moves
20. Q-N4 ch	K-R1	21. N-Q7	wins a rook
21. Q-R4!!	black can resign		

SICILIAN DEFENSE  
(correspondence game)

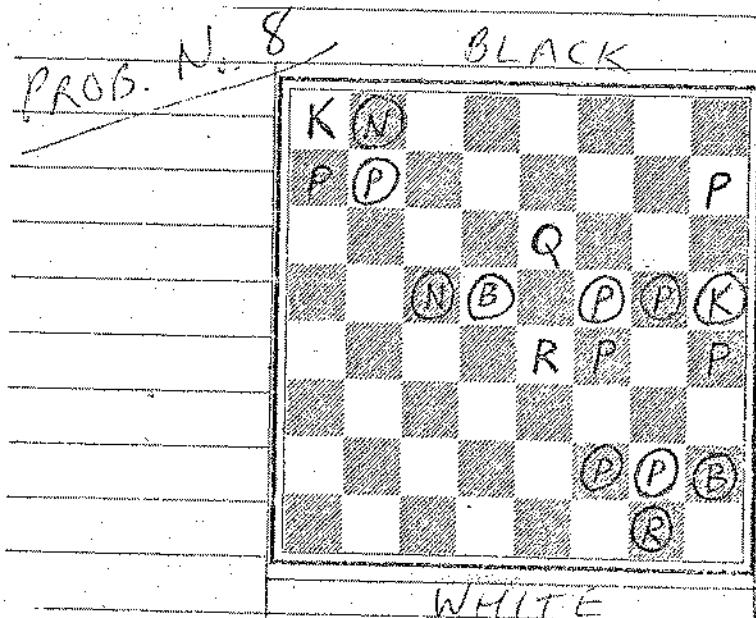
Frank Tegel	Mike Kindret		
White	Black	White	Black
1. P-K4	P-QB4	11. NxN	PxN
2. N-KB3	P-Q3	12. Q-B3	R-R2
3. P-Q4	PxP	13. B-KB4!	PxN
4. NxP	N-KB3	14. BxN	R-N2
5. N-QB3	P-QR3	15. B-R4 ch!	K-K2
6. B-QB4	P-K3	16. B-KN3	R-N3
7. O-O	P-QN4	17. QR-Q1	B-N2
8. B-N3	P-N5	18. Q-B4!	B-Q4
9. N-R4	NxP	19. QxQP!	P-B3
10. R-K1	N-B4	20. QxB	resign

CHESS PROBLEMS:



White to move and mate in three.

- White: K at Q8  
Q at Q6  
N at N5  
P at Q3  
Black: K at K4



White to move and mate in five.

- White: K at Q8  
Q at K6  
R at K4  
P at Q7, KB4, KR4, KR7  
Black: K at KR4  
R at KN8  
B at Q4, KR7  
N at QN1, QB4  
P at QN2, KB4, KB7, KN4, KN7

Send solutions to James E. Warren, 5333 Woodland Ave., Western Springs, Illinois, 60558. Solutions must be received by January 17, 1969.

## SOLUTIONS TO PROBLEMS #5 &amp; #6:

No. 5 by M. Segers

1. N-K2

Prob. No. 6 by J. F. Tracy

1. Q-N6 threat Q-B2 ch

1. .... K-N4, 2. Q-R6 ch

1. .... K-Q5, 2. Q-B2 or B-B2 ch

## STANDINGS:

1-10 J. Bingle 6

1-10 W. Elliott 6

1-10 G. Kral 6

1-10 R. Mozockie 6

1-10 R. Paz 6

1-10 E. Puto 6

1-10 E. Radavicius 6

1-10 E. Strabac 6

1-10 M. Swiderski 6

1-10 H. Wettersten 6

11 J. Sienkiewicz 5 — (6)

12-16 A. Czerna 4

12-16 R. Doody 4 — (6)

12-16 A. Pehas 4

12-16 F. Tegel 4

12-16 K. Wollenberg 4

17-18 J. Goroff 3

17-18 J. Thomas 3 19

19 J. Malone 2

CHICAGO INDUSTRIAL CHESS LEAGUE RATINGS, DECEMBER, 1968

Aldort	1570*	Gilmer	1456#	Powers	1625*
Arbetman	%	Givens	%	Puto	1782
Baker, L	1599*	Goncharoff	1772	Radevicius	%
Balthazor	1350*	Goranson	1567@	Rajski	%
Barendsen	1366#	Goroff	%	Rawlinson	%
Beck	1412*	Graae	%	Rudzitis	1840
Beeskow	1567	Helson	1090#	Schofield	1312*
Bialek	1544#	Holmes	%	Schriner, L	1584
Bingle	1562@	Jackson	2046	Shriner, F	1482-
Elinc	%	Jacobs, N	1890*	Soble	%
Bradley	1603*	Kelly	%	Spalis	%
Braun	%	Klemm	1453#	Stamm	1550*
Buchanan	%	Kolodziej	1750	Stanfield	1292@
Buehrer	%	Kowalski	1517@	Strabac	1347@
Bujalski	1467*	Kral	1825	Stutz	1480@
Butkoff	1597@	Krohn	1854	Sullivan	1899
Butler	1639*	Kucera	2074	Swiderski	1286*
Carney	%	Kumro	1758	Szczesniak	%
Catania	1280*	Lantz	1309*	Tarantino	%
Catledge	1675	Lauth	1554	Tegel	1805#
Christensen	2020#	Letourneau	%	Thomas	%
Clark	%	Naks	1493@	Tomezuk	%
Czerna	1717#	Nalone	1458#	Torma	%
D'Alessandro	1369#	Martiniak	1089@	Traeger	1301
Dawson	1580*	Mazur	1440	Unruh	1360
DeParry	1773	McCluskey	1569	Veleckis	1489
Diguillio	%	McHugh	1403*	Vikrikas	1657
Dobr	1585	Micek	1546	Visser	1471@
Dolan	1614@	Mihailovich	1963	Walsh	1419*
Dooddy	1548*	Miller	%	Warren	1950
Dopfelde	1636	Mozockie	1511*	Weinberger	1607*
Eidukas	%	Mueksch	1498@	Willip	1622@
Ekstein	1624*	Mueller, F	%	Willmott	1486*
Elliott	1798	Natseway	%	Wilson	1737
Espersen	%	Neumark	1806	Wollenberg	1533*
Fabi Jonas	1710	Nyman	1672@	Wrobel	1630*
Fajkus	1708	Ogasawara	1723-	Yonco	%
Feder	1478*	Osak	1243*		
Foster	1457*	Pehas	1738		
Garberg	%	Peterson, N	1555*		
Gawron	%	Petihakes	%		
Gigante	%	Petlicki	1610*		

CICLE BIG TEN

Kucera	2074
Jackson	2046
Mihailovich	1963
Warren	1950
Sullivan	1899
Krohn	1854
Rudzitis	1840
Kral	1825
Neumark	1806
Elliott	1798

- @ Based on 25-29 games
- \* Based on 10-24 games
- # Based on 5-9 games
- % Less than 5 games played
- Based on 30 or more games