

CHICAGO INDUSTRIAL CHESS LEAGUE BULLETIN

Vol. XII

October 1, 1968

No. 2

Editor & Publisher: Nick Goncharoff- Motorola, Inc.  
9401 W. Grand Ave.  
Franklin Park, Ill. 60131  
Na 5-6000 ext. 426

Problems: James Warren- 5333 Woodland Ave.  
Western Springs, Ill. 60558

It turns out that it is not as bad as I thought to be the CICL chairman. For one thing, my wife doesn't object to type for the bulletin my chess games. She says that she will type some of your games too. Please, keep this in mind.

On Sunday, September 15, 1968 International Grandmaster Bent Larsen of Denmark visited Chicago and played simultaneously against 34 Chicago area players. Mr. Larsen won 26 games, drew 5 and lost 3. The lucky three were: Hans Schuschel, Tom Mabee, and M. Turziansky. One of the 26 won games is printed on page 4 of this bulletin for your analysis. The other game on Page 4 between Jim Sullivan and Vic Krohn was played on Sept. 24, 1968.

I would like to remind all the team captains to mail match results to my business address without delay. (Home team captain).

The magic number 15 is no more magic for two teams. For 1st National Bank it became 11, and for WE Chargers it is 14. See Bulletin #1 for details.

Jim Warren successfully finished the rating of all CICL members covering a ten year period. Congratulations!!! The 13 pages list was sent to the following persons:

1. N. Goncharoff
2. D. Kumro
3. R. Fabijonas
4. W. Elliott
5. J. Scherer
6. D. Kucera
7. D. McCluskey
8. G. Kral
9. E. Kolodziej
10. R. Lauth
11. C. Willmott
12. J. Petlicki
13. A. Pehas
14. P. Miller

Anyone interested to look at that list, contact the above mentioned 14 persons.

CICL STANDINGS

Place	Team	W-L	Points
1	ANL Knights	1-0	7
2	WE Gambiteers	2-0	11
3-4	WE Chargers	1-0	5½
3-4	Goss Co.	1-0	5½
5-6	Motorola	½-½	4
5-6	ANL Pawns	½-½	4
7	Hall Printing	0-1	3
8-9	Teletype	0-1	2½
8-9	Chas. Bruning Co.	0-1	2½
10	ANL Bishops	0-1	2
11	1st Nat'l Bank	0-1	1
12	Ill. Bell Tel.	0-0	0
13	Perma-Power	0-0	0

RESULTS

Teletype 2½

F. Tegel	½	½
L. Aldort	0	1
J. Petlicki	0	1
K. Lantz	1F	0F
J. Klemm	0	1
J. Gilmer	1	0
S. McHugh	0	1
B. Braun	0	1

WE Chargers 5½

J. Warren	1
D. Kumro	1
E. Puto	1
T. Vikrikas	1
K. Dobr	1
K. Dopheide	1
V. Stamm	1
M. Swiderski	1

WE Gambiteers 6

J. Sullivan	1	0
W. Elliott	½	½
W. Goranson	0	1
A. Pehas	1	0
L. Schriener	1	0
T. Catledge	1	0
F. Shriner	½	½
R. Mozockie	1	0

ANL Bishops 2

V. Krohn	1
C. Christensen	1
T. DeParry	1
R. Fabijonas	1
D. Givens	1
E. Wilip	1
J. Dawson	1
F. Catania	1

## RESULTS

ARGONE PAWNS	4		MOTOCOLA	4
R. Blinc	$\frac{1}{2}$	$\frac{1}{2}$	N. Goncharoff	
E. Rudzitis	$\frac{1}{2}$	$\frac{1}{2}$	S. Butkoff	
D. Wilson	1	C	J. Neumark	
H. Ekstein	1	O	B. Micek	
J. Bingle	0	1	R. Ogasawara	
H. Feder	0	1	J. Bujalski	
E. Veleckis	0	1	D. Weinberger	
B. Walsh	1	O	E. Osak	
Z. Tomczuk	1	O	P. Tarantino	
R. Yonco	0	1	G. Letourneau	

1st NAT'L BANK	1		ANL KNIGHTS	7
W. Nyman	0	1	D. Kucera	
McCluskey	0	1	J. Jackson	
R. Buchanan	0	1	F. Mueller	
D. Kowalski	1	O	I. Goroff	
F	0	1F	E. Butler	
F	0	1F	N. Beck	
F	0	1F	J. Wrobel	
F	0	1F	B. Lukasik	

HALL PRINTING	3		WESTERN ELECTRIC	5
E. Koldziej	1	O	W. Elliott	
B. Beeskow	0	1	J. Fajkus	
C. Powers	0	1	A. Pehas	
O. Mueksch	0	1	L. Schriener	
D. Dolan	$\frac{1}{2}$	$\frac{1}{2}$	T. Catledge	
J. D'Alessandro	$\frac{1}{2}$	$\frac{1}{2}$	F. Shriner	
R. Schofield	1	O	B. Mozockie	
J. Gigante	0	1	E. Rodavicius	

GOSS PRG. PRESS CO.	5 $\frac{1}{2}$		CHAS. BRUNING	2 $\frac{1}{2}$
G. Kral	1	O	P. Miller	
P. Bradley	1	O	R. Clark	
H. Mazur	0	1	S. Gawron	
E. Strabac	$\frac{1}{2}$	$\frac{1}{2}$	A. Czerna	
F. Bialek	1	O	A. Dignilio	
J. Maks	1	O	G. Petihakes	
G. Martiniak	0	1	S. Szczesniak	
H. Stutz	1	O	I. Spalis	
R. Rajski	1	O	C. Espersen	

SICILIAN DEFENSE

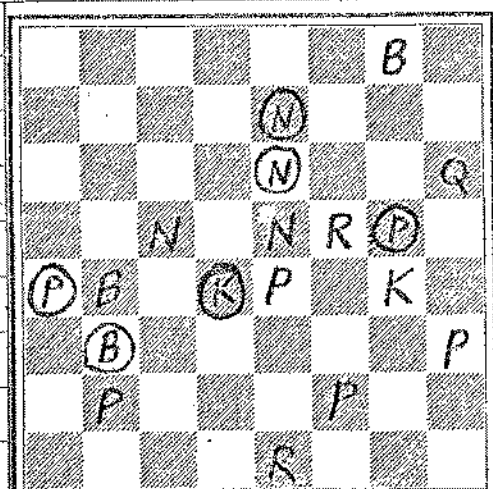
Bent Larsen		Nik Goncharoff	
White	Black	White	Black
1. P-K4	P-QB4	19. BxP	BxR
2. N-KB3	N-QB3	20. BxR	RxB
3. B-QN5	P-QR3	21. RxB	Q-B1
4. BxN	QPxB	22. P-QB3	Q-Q1
5. O-O	B-N5	23. R-R1	P-QR4
6. P-KR3	BxN	24. Q-K3	R-QN2
7. QxB	P-K4	25. P-KR3 P-KN3	N-K2
8. P-Q3	Q-KB3	26. NxN	QxN
9. Q-N3	B-Q3	27. RxRP	P-B3
10. N-Q2	N-K2	28. R-R8 ch	K-B2
11. N-QB4	N-N3	29. R-Q4 P-Q4	R-R2
12. P-QR4	P-QN4	30. RxR	QxR
13. PxNP	BPxP	31. PxB	Q-R8 ch
14. N-N6	R-R2	32. K-N2	PxKP
15. N-Q5	Q-K3	33. Q-B3 ch	K-K3
16. B-K3	O-O	34. Q-B5 ch	K-Q3
17. R-R5	R(1)-R1	35. Q-B3 ch	K-K3
18. R(1)-R1	B-B2 ?	36. QxNP	Resigns

QUEEN'S GAMBIT DECLINED

Jim Sullivan		V. Krohn	
White	Black	White	Black
1. P-Q4	P-Q4	14. BxN	QBxB
2. P-QB4	P-K3	15. BxB	RxB
3. N-QB3	3. N-KB3	16. KR-K1	R-Q2
4. N-KB3	4. P-QB4	17. N-K5	R-Q3
5. P-K3	5. BPxP	18. Q-R5	R-R2
6. KPxP	6. B-K2	19. R-K3	P-KB3
7. B-Q3	PxP	20. R-R3	PxN
8. BxP	P-QN4 P-QR3	21. QxP ch	K-B1
9. O-O	B-N2 P-QN4	22. Nx3	PxN
10. B-N3	O-O B-N2	23. PxB	KR-Q2
11. Q-K2	R-K1 O-O	24. R-B3 ch	R-B2
12. B-N5	N-Q4 R-K1	25. Q-R8 ch	Resigns
13. QR-Q1	N-Q4		

PROB. No. 3

BLACK



WHITE

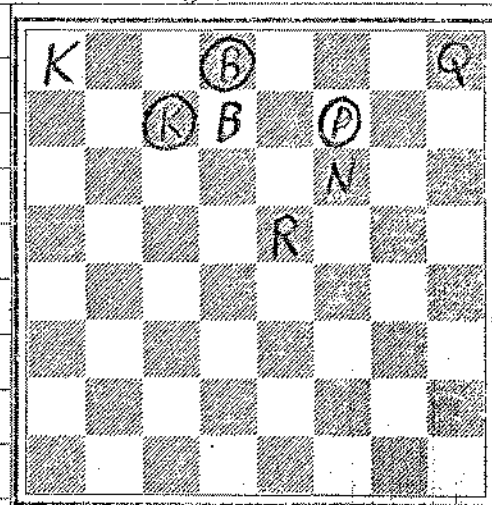
White to move and mate in two.

White: K at KN4  
Q at KR6  
R at K1, KB5  
B at QN4, KN8  
N at QB5, K5  
P at QN2, K4, KB2, KR3

Black: K at Q5  
B at QN6  
N at K2, K3  
P at QR5, KN4

PROB. No 4

BLACK



WHITE

White to move and mate in two.

White: K at QR8  
Q at KR8  
R at K5  
B at Q7  
N at KB6

Black: K at QB2  
B at Q1  
P at KB2

Send solutions to James E. Warren, 5333 Woodland Ave., Western Springs, Illinois, 60558. Solutions must be received by November 8, 1968. The answers to problems #1,2,3&4 will be printed in Bulletin #3.