

CHICAGO INDUSTRIAL CHESS LEAGUE BULLETIN

Vol. XIII

April 26, 1970

No. 8

Editor & Publisher: Nick Goncharoff- Motorola, Inc.  
9401 W. Grand Ave.  
Franklin Park, Ill. 60131  
RA 5-6000 Ex. 2230

Problems: Jamie Warren- 5333 Woodland Ave., Western Springs, Ill. 60858

---

Last August 19, I asked Jim Bretson of De Soto, Lou Aldert of Teletype, Colin Willmott of Ferris Power, and Ray Lauth of Illinois Bell Telephone to review the C.I.C.L. Policies and Practices and to make any modifications and improvements. The main idea was to change rules to accommodate the 4-man team division, but it had been also considered to be time to revise format and to institute other minor improvements, as needed. On April 15, 1970 the job was finished and copies were sent to all captains for stud. I personally was impressed with the job which was well done. Congratulations to our Rules Committee, and a big thank you!

We need a few more players for the match with the Indiana State Prison Gambiters which will be played on a Sunday in late May or early June at the prison in Michigan City, Indiana. Until now the following persons answered the call:

- 1 Jim Warren, W.E.
- 2 Curtis Kibbler, W.E.
- 3 Alan Brandau, De Soto
- 4 Jim Bretson, De Soto
- 5 Ray Alexis, Bell Labs
- 6 Frank Tegal, Teletype
- 7 Lou Aldert, Teletype
- 8 Wayne Davis, Teletype

Don't forget about the League Banquet on June 12, 1970 at the Old Prague, 5928 Cermac, in Cicero-- the price \$4.80 per person includes tip and tax. Plan to bring along your wives or girl-friends. Beside dinner, trophy awards, 7-minute speed chess, and cash prizes, there will be an election of League officers for the next season.

It took as long as two weeks in some cases for Bulletin #7 to travel from Motorola to different Chicago area companies. I suppose it was due to the truck-drivers' strike. Because of this delay, you will not find ratings in this Bulletin. In order to speed-up this bulletin, I started to work on it ahead of schedule. Therefore, answers to problems #13 & #14 also will have to wait till Bulletin #9.

CICL STANDINGSNIGHT-MAN DIVISION

Place	Team	W-L	Points
1	WE Gambiters	8-1	46
2	Bell Labs	7½-½	42
3	ANL Knights	7-2	48
4	ANL Pawne	6½-2½	45
5	ANL Bishops	5-4	37½
6	1st Nat'l Bank	5-4	35
7	Motorola	4-6	38½
8	WE Chargers	4-4	36½
9	Teletype	3-6	31½
10	Goss Co.	2-7	24½
11	Ill. Bell Tel.	1-8	19
12	Chas. Bruning Co.	0-8	20½

FOUR-MAN DIVISION

Place	Team	W-L	Points
1	Chicago Title & Trust Co.	8-0	23½
2	R.R. Donnelley & Sons Co.	7-1	22
3	Rauland "A"	6-2	21½
4	DeSoto, Inc.	4½-6½	19½
5	Bell & Howell Co.	4½-4½	17½
6	Inter. Minerals & Chem. Corp.	4½-4½	17
7	Scars, Rodback & Co.	4½-2½	15½
8	Signode Corp.	3½-5½	18
9	Perma-Power	3½-4½	15
10	Continental Can Co.	3-6	15
11	The Saerwin-Williams Co.	1½-7½	11
12	Johnson & Johnson	½-8½	7½

CURRENT GAMES: The following game was played on April 15, 1970.

Donworth	Grubbs	White	Black
White	Black	White	Black
1. P-Q34	P-K4	18. N-K	KR-Q
2. N-Q63	P-Q34	19. N-B2	NxN
3. N-B3	P-Q3	20. QxN	P-Q4
4. P-KN3	B-N5	21. P-KR3	B-B
5. B-N2	N-Q33	22. P-B4	P-Q5
6. O-O	N-B3	23. B-B	P-B3
7. P-Q3	P-QR3	24. PxP	PxP
8. P-QR3	P-KR3	25. B-Q2	B-N2 ?
9. B-Q2	B-K2	26. Q-B4 ch	K-B2
10. N-Q5	O-O	27. R-B7	Q-Q3
11. P-N4	P-QR3	28. BxP	N-B
12. P-R3	PxP	29. B-K4 ch	K-R
13. NxP ch	QxN	30. QR-K3	N-K2
14. PxP	N-R2	31. QR-B04	Q-B2
15. P-QR4	QR-N	32. RxF ch	K-R
16. B-B3	N-Q4	33. RxB ch	Resigns.
17. B-N2	N-R5		

BEST GAMES:

The following game was played on April 16, 1970.

Nik Conchuroff Bob Recaitis

White	Black	White	Black
1. P-K4	P-K4	39. Q-B3 ch	RxQ
2. N-K3	P-Q3	40. RxR ch	K-R2
3. N-Q3	P-Q3	41. B-B3 ch	QxB
4. P-Q4	N-Q2	42. RxQ	RxF
5. P-Q4	P-Q3	43. R-B7	RxR
6. B-K3	B-K2	44. RxRP	RxNp
7. Q-Q	P-KR3	45. R-R6	N-B6
8. P-QR3	KN-B3	46. RxNp	RxF
9. P-QN4	C-O	47. RxQP	N-K6
10. B-NP	N-R2	48. K-B2	N-N5 ch
11. P-KR3	P-QN3	49. K-B3	N-K4 ch
12. P-N3	P-KB4	50. K-K4	N-B2
13. PxF	RxF	51. R-QB3	P-B5
14. N-K4	R-B1	52. K-B5	P-R4
15. P-QB4	QN-KB3	53. R-B7	N-Q3 ch
16. N(B)-Q2	NxN	54. K-K5	N-K1
17. NxR	B-B5	55. RxRP	N-B3
18. B-KN4	N-B3	56. K-B5	K-R3
19. BxB	NxN	57. R-B6	K-R2
20. B-K6 ch	K-R1	58. RxN	PxR
21. P-R3	B-K2	59. KxF	K-R3
22. Q-K2	N-N4	60. K-B5	K-R2
23. B-N4	N-R2	61. K-N3	K-N2
24. P-KR4	N-B3	62. KxRP	K-R2
25. B-K6	N-R2	63. K-K5	K-N2
26. Q-Q2	R-B6	64. P-R-5	K-R2
27. B-R4	R-B1	65. P-N4	K-N2
28. P-B4	B-B3	66. K-B5	K-K2
29. QR-K1	PxRP	67. K-B6	K-N1
30. BxB	RxB	68. P-N5	K-B1
31. RxP	RxR	69. P-K6	K-N1
32. QxR	Q-KB3	70. P-N6	K-R1
33. Q-K3	Q-N3	71. P-N7 ch	Res.
34. B-R3	N-B3		
35. Q-KB3	R-K1		
36. B-K6	N-Q2		
37. R-KB1	N-K4		
38. Q-B4	Q-Q6		

RESULTS: Teletype 3

1st Nat. Bank 5

Sher-Will.	1	Seurs Robuck	3
Broteas	0	J. Zaboro	1
A. Welleit	0	S. Schwartz	1
T. West	0	T. Andreen	1
K. Bohn	1	C. Weineke	0

F. Tegol	1
L. Alfort	0
C. Lantz	0
J. Gelsner	1/2
D. Gruber	0
W. Davis	1
B. Erdinger	1/2
	OF

B. Nyman	0
C. Piterman	1
D. Kowalski	1
R. Buchanan	1/2
Mejar	1
C. Villasin	0
G. Slize	1/2
J. Huber	1/2

RESULTS:

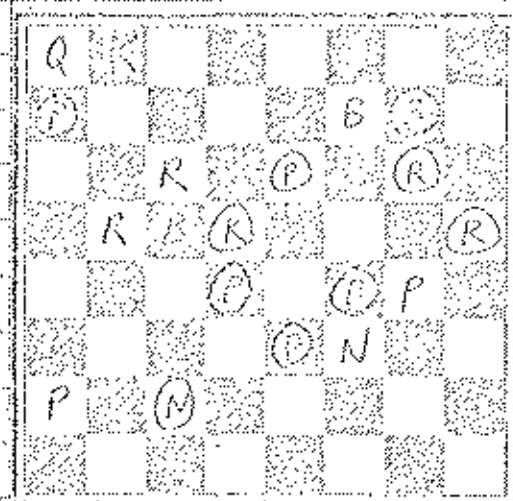
J & J 1	C. T. & T. 3	IMC 2	Perma-Power 2
L. Grubbs O	J. Danworth 1	J. Galvin 1	G. Willmott O
E. Jourdain O	I. Rosenfeld 1	K. Kolling O	B. Fidukas 1
E. Golaczewski O	B. Collings 1	P. Box O	M. Ciencio 1
G. Yarny 1	R. Freedman O	E. Thompson 1	B. Willis O
Sher-Will. 1	C.C.C. 3	Signode 1	IB & H 3
J. Brotsos O	C. Lee 1	A. Brosig O	S/ Cynman 1
T. West 1	T. Janulewicz O	I. Stensaker O	A. Fleischman 1
C. Tinger O	J. Ellis 1	R. Langenberg 1	A. Leaf O
F. Brunn C	R. Dykstra 1	J. Klein O	Fucak 1
J & J 1	Kauland 3	DeSoto 1	Sears 3
L. Grubbs O	B. Wang 1	E. Zychowski O	J. Zahora 1
E. Jourdain O	R. Schulman 1	F. Singedac O	S. Schwartz 1
N. Anthony 1	P. Miller O	A. Brandau O	C. Wieneke 1
G. Yaras O	M. Fogelson 1	V. Villalobos 1	E. Allen O
		J. Brotsos 1	T. Andresen O
R.R.D. 2½	Sher-Will. 1½	Sears 2½	Signode 1½
G. Loury O	J. Brotsos 1	J. Zahora ½	A. Brosig ½
T. Herschberger 1	T. West O	S. Schwartz 1	I. Stensaker O
R. Dargis 1	C. Tinger O	T. Andresen O	A. Klein 1
J. Whitman ½	K. Bobb ½	C. Wieneke 1	W. Oomens O
R. Shavers O	B. Neuberg 1	C. Brown ½	R. Langenbers ½
C. C. C. 2	Perma-Power 2	B & H 2	IMC 2
A. Janulewicz O	C. Willmott 1	S. Cynman ½	J. Galvin ½
S. Rusniak O	B. Fidukas 1	V. Fucak ½	K. Kolling ½
C. Morris 1	M. Ciencio O	B. Paschi 1	E. Thompson O
C. Yort 1	OF	OF	P. Box 1
Goss Co. 1	WS Gamb. 7	Motorola 4	Ill. Bell 4
G. Krel ½	J. Sullivan ½	N. Goncharoff 1	R. Racaitis O
F. Bradley O	A. Pahas 1	J. Neuzark 1	B. Lauth O
F. Bialek O	T. Catledge 1	B. Nicak 1	J. Melose O
R. Cryer O	W. Elliott ½	G. Rail O	F. Bohl 1
H. Mazur O	J. Pajkus 1	E. Csak O	A. Barker 1
I. Cumbo O	E. Macavicius 1	J. Hending O	P. Bailey 1
B. Haywood O	I. Schriener 1	B. Gleason O	A. Schroeder 1
T. Lisiecki O	T. Moseckie 1	D. Hernandez 1	G. Unruh O

CHESS PROBLEMS:

Send solutions to James E. Warren, 5333 Woodland Ave., Western Springs, Ill. 60558. Solutions must be received by May 21, 1970.

*Prob. No. 15*

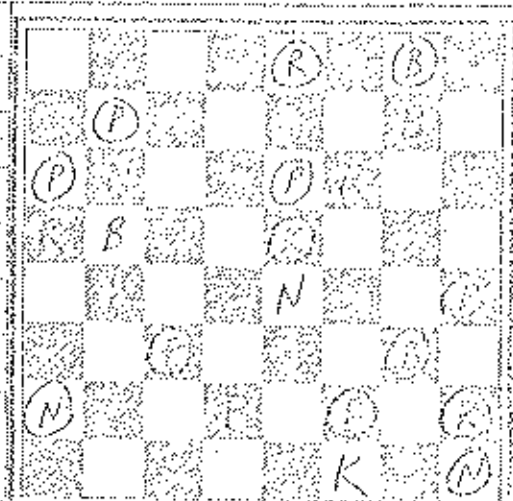
*Black*



*White*

*Prob. No. 16*

*Black*



*White*

White to move and mate in three.

White:

- K at Q8
- Q at Q8
- R at Q8, Q8
- B at Q8, K8
- N at K8
- P at Q8, K8

Black:

- K at Q4
- R at K8, K8
- B at K8
- N at Q8
- P at Q8, Q8, K8, K6, K8

White to move and mate in three.

White:

- K at K8
- R at Q8, K8
- B at Q8, K8
- N at Q8, K8
- P at Q8, Q8

Black:

- K at K4
- R at K1, K8
- B at K1, K8
- N at Q8, K8
- P at Q8, Q8, Q8, K8, K8, K8

RESULTS:

Chas. Bruning 3

WE Gambit. 5

ANI. Pawns 3

1st Nat'l Bank 5

- E. Geener 1
- A. Czerna 0
- S. Gouron 1
- J. Kasang 0
- W. Wolf 1
- J. Palmer 0
- D. Snowden 0
- R. Nelson 0

- J. Sullivan 0
- A. Pehas 1
- T. Cotledge 0
- W. Elliott 1
- R. Mozockie 0
- L. Schwiner 1
- M. Wettersten 1
- C. Kimbler 1

- V. Krohn 0
- R. Wilson 1
- E. Valcevic 1
- E. Foster 0
- V. Trice 0
- K. Adams 0
- J. Grenc 1
- P. Nelson 2

- B. Nysen 1
- C. Fitterman 0
- D. Kowalski 0
- D. McCluskey 1
- L. Miesseak 1
- K. Borekan 1
- R. Robinson 1
- C. Villasin 2