

CHICAGO INDUSTRIAL CHESS LEAGUE BULLETIN

Vol. XIII

December 18, 1969

No. 4

Editor & Publisher: Nick Goncharoff- Peterole, Inc.
9401 W. Grand Ave.
Franklin Park, Ill. 60131
Na 5-6000 ext. 2230

Problems: James Warren - 6358 Woodland Ave.
Western Springs, Ill. 60593

Results on page two of this bulletin indicate that the APL Team are leading the eight-man division with a score of 8-0. Leader of the four-man division is Chicago Title & Trust Co. with 4-0 in their column. Congratulations to both teams for their outstanding performance.

On Sunday, November 23, 1969 Jim Warren conducted a simultaneous exhibition with nine members of the Gambiters Chess Club, at the Indiana State Prison, at Michigan City, Indiana. The results were: Jim Warren 3½, Gambiters ½. Nice performance and good public relations!

Our treasurer, Daniel Kuaro, informs me that Johnson & Johnson team still did not pay their dues for 1969-70 season. Remember, after January 1, 1970: NO DUES-NO VILIPIN!

Recently I asked Dan Kuaro, Slavko Mihailovic, and Jim Warren to serve on the nominating committee. Their job will be to select a new CFC Chairman for the next season. I hope each and everyone of you will cooperate with the nominating committee in meeting acceptable candidates. Here is a list of the past chairmen:

1. Hugh Williamson (1967-1968)
2. James Petrovic (1968-1969)
3. Don McCluskey (1961-1968)
4. Walter Elliott (1961-1968)
5. James Warren (1964-1968)
6. Ray Fobjones (1966-1967)
7. Dan Kuaro (1967-1969)
8. Nik Goncharoff (1968-1970)

At this point I want to wish you a MERRY CHRISTMAS and a HAPPY NEW YEAR!

CYCLE STARTING

EIGHT-MAN DIVISION

Place	Team	W-L	Points
1	ANL Peans	8-0	20
2-3	Bell Labs	4½-½	17
2-3	ANL Knights	4½-½	17
4	WE Chargers	3-2	15½
5	WE Gambitcers	3-1	15
6	1st Nat. Bank	2-2	13
7	Motorola	1½-3½	16
8	Teletype	1½-3½	13½
9	ANL Bishops	1-3	13
10	Geac Co.	1-3	12
11	Chas. Bruning Co.	0-4	12
12	Ill. Bell Tel.	0-4	6

FOUR-MAN DIVISION

Place	Team	W-L	Points
1	Chicago Title & Trust Co.	4-0	11
2	Signode Corp.	2½-1½	10
3	Roulund "A"	2-1	9½
4	R. R. Donnelley & Sons Co.	2-0	8
5	Bell & Howell Co.	1½-1½	6½
6	Inter. Mineral & Chem. Corp.	1½-2½	5½
7	Fermo-Power	1-2	5
8	De Soto, Inc.	1-1	4
9	Johnson & Johnson	½-3½	3
10	Continental Can Co.	0-2	1½
11	The Garwin-Williams Co.	0-2	1

RECAP:

CP&T Co. 2½	I.V.C. 1½	Signode 2	Fermo-Power 2
J. Dunworth ½	J. Jackson ½	A. Prodig 1	C. Willmott 2
I. Rosenfeld 1	E. Keiling 0	R. Longenberg 0	R. Felt 1
B. Collins 1	E. Thompson 0	J. Klein 0	R. Bolger 1
B. Peters 0	B. Braunerer 1	A. Klein 1	A. Biskar 1
CP & T Co. 3½	Roulund 1½	Fermo Power 1	Bell & Howell 2
J. Dunworth 1	A. Wang 0	C. Willmott 0	S. Gynnar 1
I. Rosenfeld ½	K. Sandman ½	R. Bolger 1	V. Jack 0
B. Peters 0	L. Miller 1	D. Biddler 0	A. Strauss 1
J. Decicari 1	M. Popelcon 0	B. Willis 1	B. Fanchi 0
Signode 3	C.C.C. 1	Bell & Howell 3½	C.C.C. ½
I. Stancker 0	G. Lee 1	S. Gynnar 1	S. Horvati 0
R. Longenberg 1	T. Janulevics 0	G. Pliczmas 1	J. Elliot 0
J. Klein 1	E. Johnson 0	G. Bartoli 1	T. Janulevics 0
B. Demery 1	E. Kozlowski 0	B. Fanchi 1	R. Kozlowski ½

SUITS:

Loss Co. 2	Bell Tel. Labr. 6	Teletype 4	ANL Knights 4
G. Kral 1/2	F. House 1/2	F. Tegel 1	J. Jackson C
P. Brudley 0	J. Noort 1	L. Aldort 0	S. Mikhailovich 1
B. Lee 0	G. Benson 1	J. Klemm 1	M. Peterson C
R. Gryezon 0	B. Blair 1	J. Gilmer 1	J. Wrobel 0
H. Kozur 1/2	R. Alexic 1/2	S. McHugh 0	S. Cekara 1
G. Martiniuk 1	M. Barton 0	D. Bastien C	M. Volpe 1
B. Heywood 0	B. Storrs 1	F. Schram 0	G. Dregel 1
I. Cunnio 0	T. Cooy 1	W. Davis 1	J. Stull C
W. Staniclaw C	S. Markanas 1	B. Estinger 0	J. Butler 1
A. Rudek C	J. Duffy 1	M. Jodziewicz 0	A. Arko 1
ANL Knights 6	Motorola 2	WE Chargers 6	1st Nat. Bank 2
J. Jackson 1	M. Goncharoff C	D. Kusro 1	D. McCluskey C
S. Mikhailovich 1	J. Neumark C	E. Puto 0	D. Kowicki 1
M. Butler 1/2	T. Sodaro 1/2	K. Dopheide 1	B. Tuenman C
R. Meglic 0	D. Mick 1	K. Dobr 1	K. Barokan C
J. Wrobel 1	J. Henning 0	V. Steam 1	D. Barandach 0
M. Beck 1	J. Rail 0	J. Troeger C	W. Barbeau 1
M. Volpe 1	D. Gleason 0	M. Swidercki 1	J. Corn C
S. Cekara 1/2	G. Watson 1/2	B. Berry 1	M. Niedzik CF
Chat. Bruning 3	ANL Ravens 3	Teletype 4	ANL Bishops 3
E. Gerner C	V. Krohn 1	F. Tegel 1	T. DeFerry C
R. Clark 1F	S. Rudzitis CF	L. Aldort 0	J. Dawson 1
D. Cawron 1	R. Wilson C	J. Klemm C	D. Givens 1
A. DiGiulio CF	I. Baker 1F	J. Gilmer 1	R. Walker 0
A. Cerna 1	J. Bingle 0	S. McHugh 1	B. Walsh 1/2
J. Keegan C	H. Feder 1	D. Bastien 1	C. Ward 0
D. Wolf C	V. Foster 1	W. Davis 1	A. Vincer C
B. Wilson C	J. Grace 1	B. Braun 1	G. Kincella 1
1st Nat. Bank 3	Chat. Bruning 3	ILL. Bell 1	WE Gambiters 7
T. Nyson 1	A. Cerna C	R. Rasaitis C	T. Callidge 1
K. Nicholson C	R. Clark 1	E. Wollenberg C	Y. Elliott 1
K. Knapton 1	S. Gannon C	R. Leath C	A. Feltz 1
D. Kowicki 1	A. DiGiulio C	J. Malone C	E. LeGavlehan 1
M. Meyer 1	J. Speller C	K. Hood 1	C. Blaney C
W. Barandach CF	D. Snowden 1	F. Scully C	L. Schimke 1
J. Barbeau 1	W. Wolf C	A. Balle C	H. Wellerstein 1
J. Corn C	W. Wagner 1	F. P. CF	H. Potorsky 1F
I.M.C. 2	Jed 1		
J. Jackson 1	L. Grubbs C		
J. Colvin 1	T. LeBong C		
K. Kolling C	E. Jourdain 1		

CURRENT GAMES:

The following game was played on November 12, 1958:

Nik Goncharoff Tony Sodero

White	Black	White	Black
1. I-K4	P-K4	32. KxP ch	K-B1
2. N-K B3	N-QB3	33. R/1-QN1	K-Q2
3. P-N3	P-QR3	34. R/3-N3	P-R4
4. P-R4	P-QN4	35. P-R3	R-K1
5. P-N3	N-QN4	36. K-Q3	R-KN1
6. PxP ch	KxP	37. P-Q2	R-K1
7. PxxP ch	K-K2	38. N-K1	R-B
8. P-Q4	P-Q2	39. R/3-K3	N-R3
9. P-N3 ch	N-B3	40. K-Q3	R-R3 ch
10. N-KN4	BxP	41. P-B3	R-R7
11. QxP	P-KR3	42. R/1-K2	BxR
12. P-Q2	Q-Q2	43. KxR	R-K2
13. BxP ch	PxP	44. K-B3	P-K1
14. Q-N3	Q-K1	45. P-N4	PxP ch
15. Q-N3	K-Q1	46. PxP	R-KN2
16. P-Q2	B-K2	47. P-N3	N-B2
17. Q-QB3	N-N2	48. K-N4	K-K2
18. P-QN4	R-KN1	49. P-B3	K-R1
19. P-KN3	K-B1	50. P-K5	R-B3 ch
20. P-KB3	P-Q1	51. K-N4	PxP
21. P-N3	Q-N3	52. RxxP ch	K-Q2
22. N-Q4	P-K74	53. R-Q2	K-Q7
23. PxxP	B-B3	54. P-B4	N-N3
24. N-Q4	Q-N2	55. P-Q73	BxR
25. C-C-C	K-N2	56. KxR	K-B2
26. Q-Q3	BxN	57. K-K4	N-B7
27. QxP	QxQ	58. P-KB3	N-QB1
28. BxP	N-KR3	59. P-R3	P-K2
29. P-N74	P-QN4	60. P-KN3 ch	K-B1
30. K-Q3	LxN1	61. R-K2	K-K1
31. LxP	RxR1	62. P-N7	Resign

LATE RESULTS:

WE Chargers 3 1/2

- J. Wetton 1/2
- D. Kusno 1/2
- E. Iuto 1/2
- K. Dopheide 1
- V. Dobr 1
- V. Stann 0
- J. Trepper 0
- T. Seidenbl 0

ANI Pawns 4 1/2

- V. Rohn 1/2
- D. Rudeltic 1/2
- K. Wilton 1/2
- F. Prater 0
- J. Baker 0
- J. Bingle 1
- V. Trics 1
- S. Velocis 1

Bell Lads 4

- P. House 1/2
- B. Noose 1/2
- G. Benson 1P
- T. Blair 0
- D. Astrom 0
- K. Alexis 1
- M. Barton 0
- T. Storr 1
- J. Co,man 0

Notornia 4

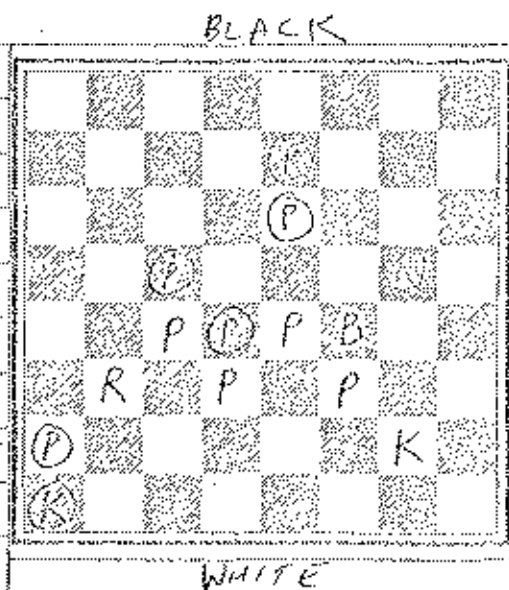
- P. Goncharoff 1/2
- J. Goumark 1/2
- T. Sodero 0
- B. Mlack 1
- G. Rail 1
- J. Beating 0
- D. Gleason 1
- D. Barn 0
- T. Chubb 1

Solution to problem #5: 1. Q-Nc6, P-B4; 2. PXP e.p. mate

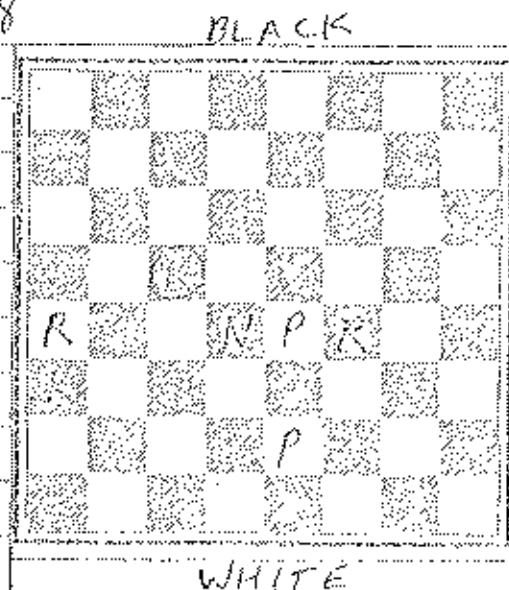
Solution to problem #6: 1. B-N6, K-Q2; 2. Q-Bc6, ExQ; 3. N-N6 mate
K-Q4; 2. Q-Kc6, ExQ; 3. N-Q6 mate
Qx3; 2. Q-KNc6, K-B7; 3. P-K6 mate
RKN; 3. QxK6, Kx1; 3. P-B6 mate
NKN; 2. Q-Rc6, K-K4; 3. B-Q4 mate

Send solutions to James E. Warren, 5333 Woodland Ave., Western Springs, Ill. 60558. Solutions must be received by January 22, 1970.

Problem No. 7



Problem No. 8



White to play and mate in five.

White: K at K4
R at Q3
B at K3
N at B6
P at Q3, Q3, K4, K3

Black: K at Q8
P at Q7, Q4, Q5, K3

White to move and mate in four.

White: K at Q4
R at Q4, K3
N at Q3
P at K3, K4

Black: K at Q3

RESULTS:

WE Gambiters 5½	ANI Knights 5½	ANI Bishops 5½	Ill. Bell 5½
J. Sullivan 0	J. Jackson 1	J. Dawson ½	K. Wollensberg ½
T. Cullodge ½	J. Cehnerer ½	D. Givens 1	R. Lantz 0
W. Elliott C	S. Minilovich 1	K. Buras 0	B. Racutis 1
A. Johns 1	E. Butler 0	B. Welsh 1	J. Malone 0
J. Pajkus 1	R. Maglie 0	R. Walker 1	R. Doody 0
Schriner 0	M. Peterson 1	C. Ward 1	G. Unruh 0
L. Radzevicius ½	J. Trood 1	F. Catania 0	A. Barker 1
R. Moschis 0	M. Back 1	A. Viesser 1	A. Denroeder 0
B. El-Banawy 0F	M. Volpe 1F	G. Dickerson 1	I. Bailey 0

CICL BIG TEN

Tauntino	%
Tegel	1890*
Thomas	1288&
Thompson	%
Tombs	%
Traeger	1310
Price	1648*
veleckis	1524
Villalobos	%
Visser	1502@
Volpe	1459
Wagner	%
Walker	1523#
Walsh	1466*
Wang	2062&
Ward	%
Warren	1983
Watson	1194&
Welner	%
West	%
Whitmer	%
Willmott	1475*
Wilson	1745
Witowski	%
Wolf	%
Wollenberg	1575@
Wrobel	1639*
Zychowski	%
Bara	%

30 or more games
 @ 25-29 games
 * 10-24 games
 # 5-9- games
 & 4 or less games
 % insufficient results

Mihallovich	2001
Jackson	1998
Warren	1983
Sullivan	1928
Jacobs	1917
Scherer	1902
Elliott	1888
Krohn	1855
Rudzitis	1830
Kumro	1813

PROBLEM SOLVING STANDINGS:

1-2	Hennig	6
1-2	Ockers	6
2-4	Alexis	5
3-4	Wattersten	5
5-7	Malone	4
5-7	Streit	4
5-7	Tegel	4
8-14	Benson	3
8-14	Brunns	3
8-14	Doody	3
8-14	Elliott	3
8-14	House	3
8-14	Noose	3
8-14	Siemkiewicz	3
15-24	Bara	2
15-24	Blaeszyk	2
15-24	Duffy	2
15-24	Gleason	2
15-24	Jauch	2
15-24	Futo	2
15-24	Kail	2
15-24	Shah	2
15-24	Szidorski	2
15-24	Zyolowski	2
25	Blair	1

LATE MINUTE RESULTS:

WB Gambiters	0	1st Nat. Book	3
T. Cottle	1/2	W. Nyan	1/2
W. Elliott	1	C. Fiterman	0
A. Fense	1	D. Kowalcki	0
J. Pajkue	1/2	D. McClusko	1/2
E. Radavicius	0	R. Buchanan	1
L. Schmirer	0	K. Barcko	1
J. Brozovic	1	B. Baranovic	0
K. Nowacki	1	J. Barcko	0