

CHICAGO INDUSTRIAL CHESS LEAGUE BULLETIN

Vol. XIII

Oct. 12, 1969

No. 2

Editor & Publisher: Nick Goncharoff- Motorola, Inc.
9401 W. Grand Ave.
Franklin Park, Ill. 60131
Na 5-6000 ext. 2330

Problems: James Warren- 5333 Woodland Ave.
Western Springs, Ill. 60558

The idea for organizing the four-man division, in addition to the existing eight-man division, already is paying off. As of this date, there are twelve teams in each division. Many teams, which in the past had to drop out from the CICL for various reasons, have returned. WELCOME BACK!!!

The machinery for further League growth and expansion is established. In the future, if there will be enough interest in the Chicago industrial chess, it will be easy for us to add additional divisions. For example, five-man division, six-man division, etc. could be organized.

Don't forget about the 30-30 Swiss Style Tournament on Saturday, November 2, 1969. The time is 9 AM. The place-- Albright Gym, at Western Electric. The entry fee is only \$2.00. Let's make it a big event. I request each team captain to find out who plans to attend, then call the Tournament Director, and let them know who is coming. Here are the telephone numbers: 494-2858 (Karel Door), 494-4290 (Alex Penak). Please bring your own chess sets. Also, if clock is available, bring the clock!!!

Recently Jim Brotsos, who is the acting chairman of the four-man division, received an interesting letter from Matt Pavitt who is the President of the Commercial Chess League of New York. Mr. Pavitt is trying to promote a telephone match between members of our League and members of his League. His League, by the way, consists of 35 teams in 5 divisions. I think there should be no trouble for our League to meet this challenge. The only question is: "How many of you, chess enthusiasts, are willing to spend Saturday afternoon over the chess board and the telephone?"

Again I request each team captain to poll your members to see how many are interested in participating in such a match. Let me (or Jim Brotsos) know your findings as soon as possible.

CJCL STANDINGSEIGHT-MAN DIVISION

Place	Team	W-L	Points
1-3	ANL Pawns	1-0	6
1-3	Bell Labs	1-0	6
1-3	W.E. Chargers	1-0	6
4-6	ANL Knights	1-0	5½
4-6	Goss Co.	1-0	5½
4-6	W.E. Gambiteers	1-0	5½
7-9	ANL Bishops	0-1	2½
7-9	Chas. Bruning Co.	0-1	2½
7-9	1st Nat. Bank	0-1	2½
10-12	Ill. Bell Tel.	0-1	2
10-12	Motorola	0-1	2
10-12	Teletype	0-1	2

FOUR-MAN DIVISION

Place	Team	W-L	Points
1	Rauland "A"	1-0	4
2-3	Chicago Title & Trust Co.	1-0	3
2-3	R. R. Donnelley & Sons Co.	1-0	3
4-5	De Soto, Inc.	½-½	2
4-5	Inter. Minerals & Chem. Corp.	½-½	2
6-7	Bell & Howell Co.	0-1	1
6-7	Perma-Power	0-1	1
8-12	Continental Can Co.	0-0	0
8-12	Johnson & Johnson	0-0	0
8-12	Rauland "B"	0-0	0
8-12	The Sherwin-Williams Co.	0-1	0
8-12	Signode Corp.	0-0	0

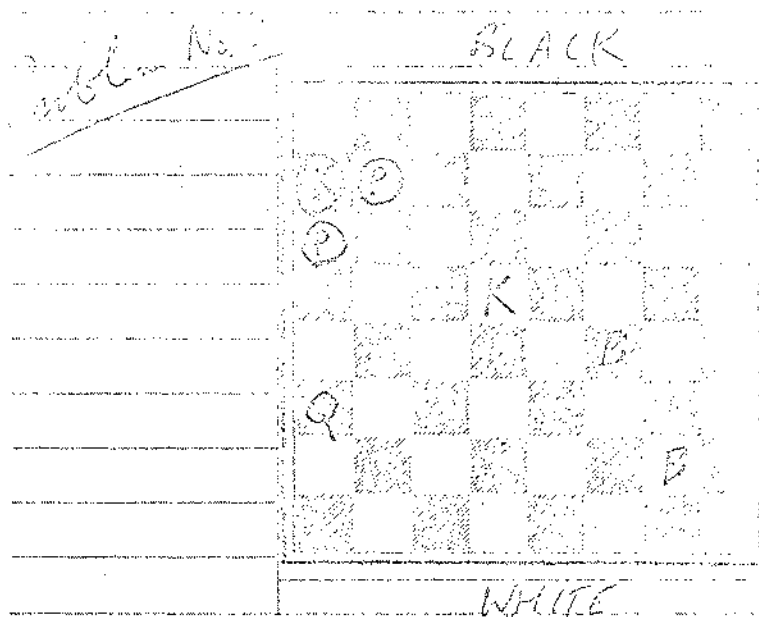
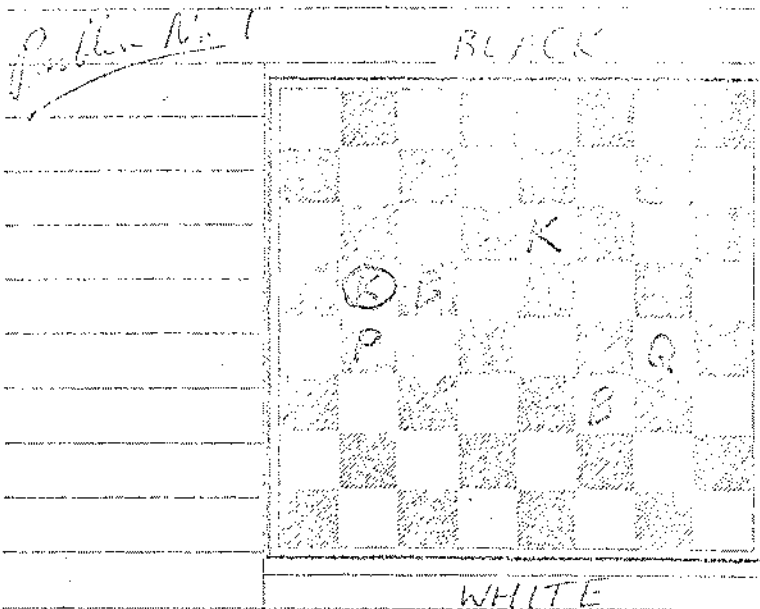
Motorola 2	ANL Pawns 6	ANL Knights 5½	1st Nat. Bank 2½
M. Goncharoff ½	V. Krohn ½	J. Jackson 0	W. Nyman 1
J. Neumark 0	E. Rudzitis 1	S. Mihailovich 1	D. McCluskey 0
T. Sodaro ½	R. Wilson ½	E. Butler 1	D. Kowalski 0
B. Micek 0	H. Eksteis 1	R. Maglic 1	R. Buchanan 0
G. Rail 1	L. Baker 0	J. Wrobel 1	W. Barandson 0
J. Henning 0	V. Trice 1	D. Dever 0	K. Barakan 1
R. Kruce 0	J. Bingle 1	J. Harkreader 1	Gastelu 0
R. Gleason 0	E. Veleckis 1	S. Cokers ½	J. Barocau ½
G. Watson 0	M. Foster 1	J. Rechten 0	Sorn ½

ANL Bishops 2½	W.E. Gambit. 5½	Goss Co. 5½	Chas. Brunning 2½
T. DeParry ½	J. Sullivan ½	G. Kral 0	E. Gasner 1
W. Walsh 0	W. Elliott 1	P. Bradley 1	S. Gawron 0
R. Walker 0	T. Catledge 1	H. Mazur 1	S. Szczesniak 0
D. Givens 0	A. Pehas 1	G. Martiniak 0	A. Czerna 1
K. Durba ½	L. Schriener ½	F. Bialek 1	I. Spalts 0
J. Dawson ½	E. Radavicius ½	R. Gryczon 1	J. Kasang 0
C. Ward 1	J. Brozovich 0	F. Kolodziejczak ½	D. Snowden ½
G. Dickerson 0	B. Mozockie 1	R. Jaszowski 1	B. Wagner 0

WE Chargers 6	Teletype 2	Bell Labs 6	Ill. Bell Tel. 2
J. Warren 1	F. Tegel 0	F. House 0	F. Lauth 1
D. Kumro 1F	J. Petlicki 0F	G. Noose 1	J. Malone 0
E. Puto 1	L. Aldort 0	B. Blair 0	Russ Poody 1
K. Dopheide ½	B. Bastian ½	G. Benson 1	D. Jefferson 0
K. Dobr 0	J. Klemm 1	D. Astrom 1	L. Rolston 0
V. Stamm 1	W. Davis 0	R. Alexis 1	B. Maher 0
E. Balek ½	B. Miller ½	B. Storrs 1	A. Barker 0
J. Traeger 1	D. Gruber 0	S. Markunas 1	C. Browman 0
M. Swiderski 1	K. Tanaka 0		

IMC 2	De Soto 2	R.R. Donnelley 3	Bell & Howell 1
J. Galvin 0	E. Zychowski 1	Lourey 1	A. Bartoli 0
K. Kolling 1	V. Villalobos 0	Hersehberger 1	Welner 0
E. Thompson 0	Braado 1	R. Dargis 0	Fucak 1
B. Brauncker 1	M. Andrews 0	Tobias 1	Panchi 0

CT & T Co. 3	Perma-Power 1	Rauland 4	Sherwin-Williams 0
Dunworth 1	Willmott 0	B. Wang 1	J. Brotsos 0
Rosenfeld 1	Bolger 0	R. Schulman 1	T. West 0
Collings 1	Eidukas 0	F. Miller 1	D. Drogos 0
Freedman 0	Soble 1	M. Fogelson 1	A. Chimens 0
		J. Singer 1	K. Johns 0
		H. Lange 0	P. Bruins 1



White to move and mate in two.

White: K at K6
Q at KN4
B at QB5, KB3
P at QN4

Black: K at QN4

White to move and mate in two.

White: K at C5
Q at QR3
B at KB4, KN2

Black: K at QR2
P at QR3, QN2

The Sixth Annual Problem Solving Contest gets under way with the two above problems. This year, again, trophies will be awarded to the top three problem solvers. Send solutions to James E. Warren, 5333 Woodland Ave., Western Springs, Illinois, 60558. Solutions must be received by October 15, 1969.

The following game was played on October 2, 1969.

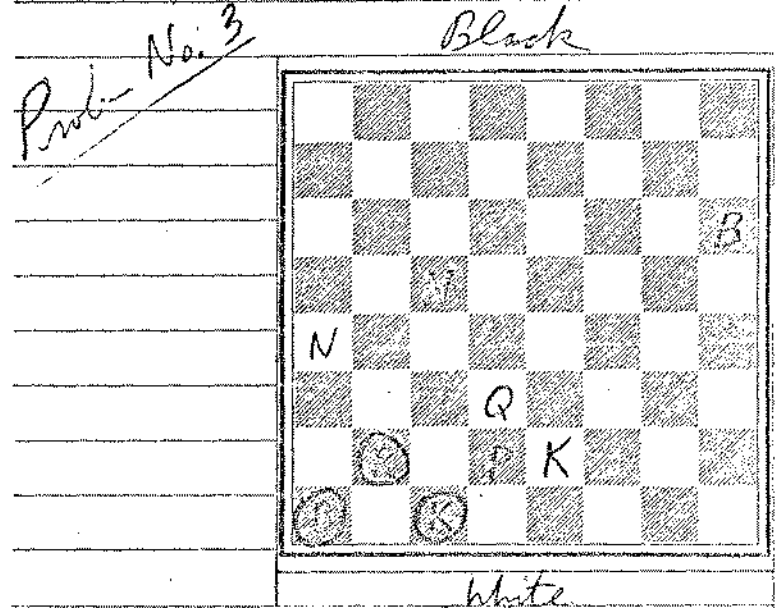
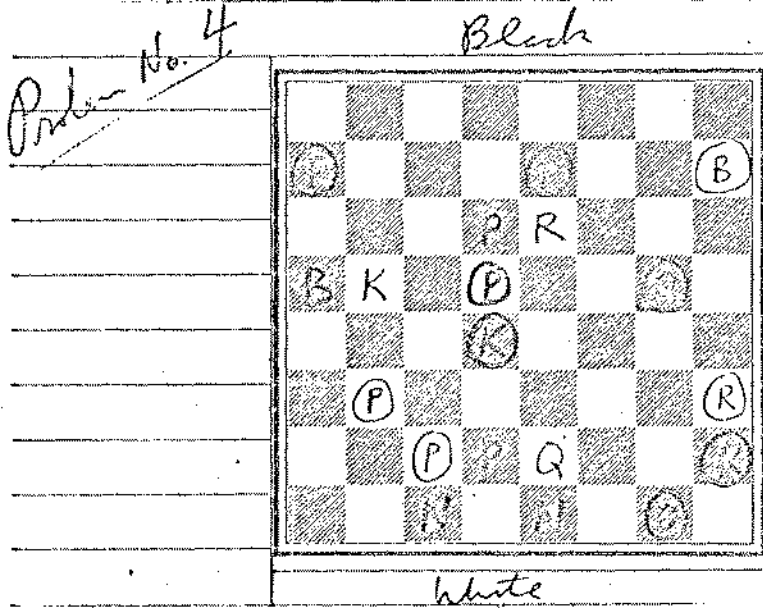
N. Goncharov		V. Krom	
White	Black	White	Black
1. P-K4	P-QB4	20. P-B3	Nx3
2. P-KB4	P-K3	21. RxN	QR-Q1
3. N-KB3	P-Q4	22. R(3)-Q3	RxR
4. B-N5 ch	B-Q2	23. RxN	R-Q1
5. Bx3 ch	Nx3	24. RxR ch	BxR
6. P-K5	N-K2	25. Q-Q3	B-K2
7. O-O	N-KB4	26. K-B2	P-KR3
8. P-QB3	B-K2	27. P-KR4	K-B2
9. N-QR3	O-O	28. P-KR5	K-K1
10. N-QB2	P-QR4	29. N-Q2	Q-Q2
11. N-K3	NxN	30. K-K2	QxQ ch
12. PxN	P-KB4	31. KxQ	K-B2
13. Q-K2	R-K1	32. P-K4	P-KN3
14. P-B4	N-N3	33. PxBP	NPxBP
15. PxQP	QxQP	34. N-QN1	K-K1
16. N-Q1	Q-B3	35. N-B3	P-N5
17. P-QN3	N-Q4	36. N-K2	K-Q2
18. B-N2	P-QN4	37. K-B4	K-B3
19. QR-B1	Q-N2	38. N-QB1	B-R5

Draw

The following game was played at US OPEN 1969, Lincoln, Nebraska.

W. Elliott		J. Payne	
(R. 1795)	(R. 2220)		
White	Black		
1. P-Q4	N-KB3	23. B-K3	R-Q1
2. N-KB3	P-LN3	24. KR-Q1	P-K3
3. P-K5	B-N2	25. P-QN3	B-KB1
4. B-Q3	O-O	26. QR-B1	R-Q2
5. O-O	P-Q2	27. P-QN4	P-KN4
6. P-K4	P-QB4	28. P-QR3	R-KB2
7. P-QB2	N-QB3	29. Q-B2	P-KR3
8. P-KR3	N-Q2 ?	30. N-Q2	P-QR4
9. B-K2	P-QN3	31. PxB	PxB
10. QN-Q2	B-N2	32. Q-R2	QxQ
11. R-K1	N-KB3	33. RxQ	B-Q4
12. N-B1 ?	Px1	34. R(2)-R1	R-QN2
13. PxB	N-QN2	35. P-QR4	B-N5
14. N-N3	NxB	36. R-B3 ch	B-B2
15. QxN	P-Q4	37. R(1)-QB1	R-R1
16. P-K5	N-K5	38. RxR	QxR
17. P-Q2	P-KB4	39. R-B2	B-Q4
18. N(2)xN	QPxN	40. B-Q2	PxB
19. Q-Q2	Q-Q4	41. Rx3	B-N3
20. N-K2	P-B5 ?	42. N-N2	BxB
21. PxB	RxN ?	43. N-R2	B-B3
22. BxR	R-B1 ?	44. RxB	K-N3
		45. P-N4	P-R4
		46. R-B5	B-Q4
		47. PxB ch	RxB
		48. R-R2	B-N6
		49. K-N3	P-N3
		50. R-B3	B-Q3
		51. R-B6	B-N6
		52. N-N6.	B-B5
		53. R-Q2	B-N3
		54. R-Q8	B-B5
		55. R-KB3	P-N6
		56. R-QN3	B-B5
		57. N-N4	B-Q2
		58. R-N3	B-N5
		59. P-R4	Px1 ch
		60. PxB	B-Q4
		61. K-N4	P-B2
		62. K-N5	K-K2
		63. R-KR3	K-Q2
		64. K-B6	K-B3
		65. R-K2	Resigns.

CHESS PROBLEMS:



White to move and mate in three:

White: K at QN5
Q at K2
R at K6
B at QR5
N at QB1, K1
P at Q6, Q2

Black: K at Q5
Q at KN4
R at KR6, KR7
B at KN8, KR2
P at QR2, QN6, QB7, Q4, K2

White to move and mate in two:

White: K at K2
Q at Q3
B at KR6
N at QR4, QB5
P at Q2

Black: K at Q38
R at QN7
B at QR8

Send solutions to James E. Warren, 5333 Woodland Ave., Western Springs, Illinois, 60558. Solutions must be received by November 7, 1969. The answers to problems #1, 2, 3, and 4 will be printed in Bulletin #3.