

CHICAGO INDUSTRIAL CHESS LEAGUE BULLETIN

Vol. XIII

Sept. 2, 1969

No. 1

Editor & Publisher: Nick Goncharoff- Motorola, Inc.  
9401 W. Grand Ave.  
Franklin Park, Ill. 60131  
Na 5-6000 ext. 2230

Problems: James Warren- 5338 Woodland Ave.  
Western Springs, Ill. 60558

---

The League Business Meeting was held on Tuesday, August 19, 1969 at Hawthorne Savings and Loan, 4800 West 24 Place, Cicero, Illinois. Attendance was almost 100%. Only Charles Bruning Co. representatives did not show up, due to the last minute emergency.

It was an exciting, stimulating, and a very productive league meeting. The reason for excitement was the growth and expansion of our Chicago Industrial Chess League.

It was decided unanimously to accept to our league the newly organized four-man team league, which begins its competition having at the start eight teams. The man who organized it is a well known chess enthusiast, our former League Chairman, Jim Brotsos. Congratulations!!

The Bell Lab's team was formally accepted to our eight-man team league. This season it will start with one team, but in the future it has a possibility for doubling or even tripling. At present the membership of Bell Lab's Club is an even seventy.

Twenty is the number of teams at present in our Chicago Industrial Chess League; eight four-man teams, and twelve eight-man teams. Starting with this season, an eight-man team with fifteen forfeits during the year will automatically be transferred to the four-man section for the following season. On the other hand, if a four-man team feels it is ready for the eight-man section, it will get its wish. Of course all these points have to be formally approved on our League Business Meeting where each club is represented.

The 30-30 Swiss Style Tournament will be held on Saturday, Nov. 8, 1969 at Albright Gym at Western Electric. The entry fee is \$2.00 per person. Alex Pehas and Karel Dobr "volunteered" to be Tournament Directors. (Thank you very much,) Let's make it a big success!!!

This season I will follow the same policy on League Bulletin as in 1968-69. Each club will receive only one copy. It will be the responsibility of each team captain to multiply and deliver the bulletin on time to each member of his team. Good Luck!!!!

USCF TOURNAMENT NEWS:

CICL players' results in the Illinois Open.  
(Labor Day, 1969)

USCF rating	Name	Total Score (out of 7)	Club
1875	J. Scherer	4½	WNL
1796	N. Goncharoff	4½	Mot.
1795	W. Elliott	2½	W.E.
1775	T. Catledge	3	W.E.
1753	A. Pehas	4	W.E.
1737	F. Tegel	4	Tele-Type
1693	T. Sodaro	3	Mot.
1624	W. Nyman	4	F.N.B.
1194	R. Krusc	2	Mot.

CICL players' results in the Western Open in  
Milwaukee, July 4, 1969.

1953	J. Warren	5-2	W.E.
1775	T. Catledge	3-4	W.E.
1767	T. Sodaro	3½-3½	Mot.
1624	W. Nyman	3-4	F.N.B.

CICL players' results in Forest City Open  
Rockford, Ill., July 19-20, 1969.

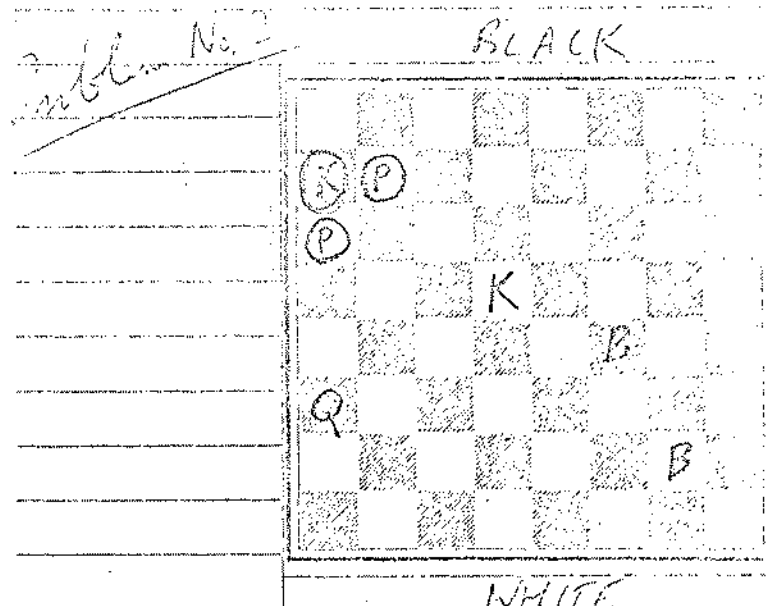
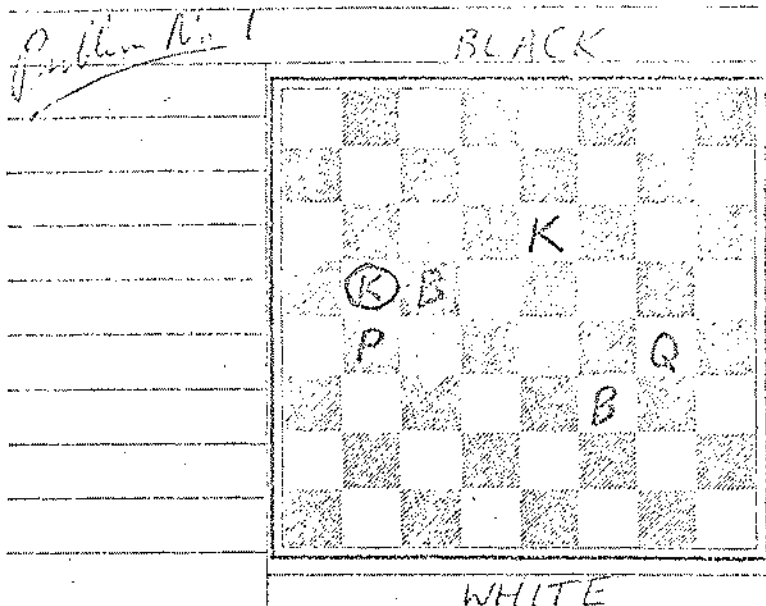
1737	F. Tegel	3½-1½*	Tele-Type
1624	W. Nyman	3-2	F.N.B.
1512	R. Leuth	2-3	Ill. Bell

\* tie for class B prize

CURRENT GAMES

The following game was played at Illinois Open, September 1, 1969.

Richard Annen	Nik Goncharoff
White	Black
1. N-KB3	N-KB3
2. P-KR3	N-QB3
3. P-Q4	P-Q4
4. B-KB4	P-K3
5. P-K3	B-Q3
6. N-K5	N-Q2
7. N-Q3	Bx3
8. NxB	O-O
9. P-QB4	PxP
10. BxP	N-R4
11. B-Q3	N-KB3
12. O-O	P-QN3
13. N-QB3	B-N2
14. P-QN4	N-B3
15. P-QR3	N-K2
16. QR-B1	N(2)-Q4
17. QNxN	NxN
18. Q-N4	NxN
19. QxN	R-B1
20. P-N5	Q-Q4
21. Q-N3	P-QB4
22. PxP(en)	RxF
23. RxR	QxR
24. R-N1	R-QB1
25. P-B3	Q-B6
26. B-N5	QxKp ch
27. Q-B2	R-B8 ch
28. RxR	QxR ch
29. K-R2	QxRp
30. Q-N3	Q-KB1
31. Q-B7	Q-B1
32. QxQ ch	BxQ
33. B-B6	P-QR4
34. B-N5	B-N2
35. K-N3	K-B1
36. K-B4	P-B3
37. K-K3	K-K2
38. P-N3	K-Q3
39. P-B4	B-B3
40. B-Q3	P-QN4
41. BxRp	P-N5
42. K-Q2	P-R5
43. P-B5	PxP
44. K-B1	K-Q4
45. BxBp	KxQp
46. Resign	



White to move and mate in two.

White: K at K6  
Q at Q4  
B at B3, KB3  
P at P4

Black: K at Q4

1. Q-P3  
1. K-K3  
2. Q-B4  
1. K-K5  
2. B-B4 mate

White to move and mate in two.

White: K at C5  
Q at QR3  
B at KB4, KN2

Black: K at QR2  
P at QR3, CN2

1. K-Q4  
1. P-R4, K-R1  
2. Q-B5 mate  
2. Q-R4 mate

The Sixth Annual Problem Solving Contest gets under way with the two above problems. This year, again, trophies will be awarded to the top three problem solvers. Send solutions to James E. Warren, 5333 Woodland Ave., Western Springs, Illinois, 60558. Solutions must be received by October 15, 1969.