

CHICAGO INDUSTRIAL CHESS LEAGUE BULLETIN

Vol. XVI

No. 6

April 1, 1973

EDITOR: Ron Tobias	R. R. Donnelley & Sons Company 350 E. 22nd Street Chicago, Illinois 60616	326-8667
RATINGS: Dan Kumro	Western Electric Co. Department 509332 3800 Golf Road Rolling Meadows, Illinois 60008	956-2297
PROBLEMS: Newman Guttman	Bell Labs Naperville, Illinois	682-3133

---

SEMI-ANNUAL BUSINESS MEETING

Although the turnout was light (16), there were a number of items discussed and voted on at the meeting (see enclosed minutes).

TELEPHONE NUMBER CHANGE

Please change Ron Tobias' phone number back to 326-8667.

NOMINATION OF OFFICERS

The following people were nominated for office at the business meeting.

8-Man Division Chairman

Dick Astrom, Bell Labs  
John Greczek, Amoco

4-Man Division Chairman

Terry Andresen, Sears  
Dave, Lawrenz, Bell Labs

Secretary

Ken Lisec, Allied Van Lines

Treasurer

Irv Rosenfeld, Chicago Title & Trust

President

Jim Brotsos, Curtiss Candy  
Ron Tobias, R. R. Donnelley

Further nominations will be accepted until April 15. Contact your Division Chairman, Jim Brotsos, or Ron Tobias.

The election will be done by mail, the ballot will be in the May Bulletin. Oh! I almost forgot, there will be two 4-Man Division Chairmen next year because of the number of Junior Division teams.

AWARDS BANQUET

The Banquet Committee this year consists of Gary Benson of Bell Labs and Ron Tobias of R.R.D. They have selected Banana's Steak House, located at 9401 South Cicero in Oak Lawn. The date is June 15, 1972. More information will follow next month.

## ROSTERS

Dan Kumro asks that ALL Team Captains submit a list of active players with their full names. Also, if a player is out for the season, let Dan know. His address is on the first page of this Bulletin.

## LOCAL CHESS CLUBS III

Here is the third installment in the continuing list of local chess clubs in the Chicago area. Information is given here as it is received; as a result some details are often lacking. Anyone with further information on the clubs that have been listed, as well as on other clubs not already mentioned in the Bulletin, may call Charles Ward at 739-7711, ext. 3181, to have the information published in future issues.

- 1) LaGrange Chess Club - meets at the West Suburban YMCA, 31 East Ogden Ave., LaGrange. Meets Wednesdays at 7:30 PM. Charles Brokaski, President. For information, call Barbara Winters at the YMCA.
- 2) Mar Par Chess Club. Meets Tuesdays at the Marquette Park Fieldhouse, 67th & Kedzie, Chicago.
- 3) Blue Island Chess Club\* - Meets Fridays at the Centennial Park Fieldhouse, 1800 W. Vermont, Blue Island, Illinois.
- 4) Kennedy Chess Club\* - Meets Thursdays at Kennedy Park Fieldhouse, 11320 South Western Ave., Chicago.
- 5) ParkForest Chess Club\* - Meets Thursdays at the Park Forest Recreation Center, Lakewood & Wilson, in Park Forest.
- 6) Hammond Chess Club\* - Meets Thursdays at Howard Library, 169th & Grand, Hammond, Indiana. For information, call Mr. Schwinga, 474-2317.
- 7) East Gary Chess Club\* - Meets Thursdays at the Central Shopping Center Library, Central Avenue, East Gary, Indiana.

\*Those clubs denoted by an asterisk are members of the South Suburban Chess League.

## U.S. CHAMPIONSHIP PLAYOFF

The recent 3-way playoff for the U.S. Championship, held in Chicago, resulted in victory for Grandmaster Robert Byrne. Byrne (3-1) and Sammy Reshevsky (2-2) thus qualified for the Interzonal tournaments this July. Lubomir Kavalek (1-3) could manage only single draws against the other two. Byrne will go to the Moscow Interzonal, Reshevsky to the Brasilia Interzonal. The top three finishers in each tournament will join ex-world champions Boris Spassky and Tigran Petrosian in the series of elimination matches that will determine the challenger to World Champion Bobby Fischer.

SENIOR DIVISION NOTES

First National Bank has received its second forfeit on time, and by the League rules has forfeited the privilege of starting the clock of a player not present 15 minutes after the match starting time.

SENIOR DIVISION STANDINGS

<u>Place</u>	<u>Team</u>	<u>Won</u>	<u>Lost</u>	<u>Points</u>
<u>SECTION A</u>				
1	Bell Telephone Labs	7	0	42½
2	WE Gambiteers	6	1	35½
3	Motorola	4	4	33½
4	ANL Knights	3½	3½	30½
5	WE Chargers	3	4	29½
6	1st National Bank	0	8	8½
<u>SECTION B</u>				
1	ANL Bishops	5½	2½	32½
2	Amoco	5	3	36½
3	Illinois Bell	3½	4½	33
4	Teletype	3	4	25½
5	ANL Pawns	2½	5½	30
6	Goss Co.	2	5	20½

SENIOR DIVISION RESULTS

<u>ILL. BELL</u>	<u>5</u>	<u>ANL PAWNS</u>	<u>3</u>	<u>TELETYPE</u>	<u>2½</u>	<u>AMOCO</u>	<u>4½</u>
K. Wollenberg	1	J. Bingle	0	F. Tege1	1	H. Schroeder	0
G. Keith	½	R. Wilson	½	J. Gilmer	½	F. Jacobsen	½
K. Buell	½	L. Baker	½	T. Petlicki	0	J. Greczek	1
D. Lukes	0	S. Ockers	1	M. Pokorny	0	L. Sheridan	1
J. Malone	0	W. Walsh	1	C. Lantz	0	R. Lee	1
J. Peters	1	H. Feder	0	S. Kostoff	1	M. Dee	0
R. Lauth	1	T. Renner	0	D. Chapman	0	J. Holzhauer	1
J. Poppelreiter	1	J. McKee	0		OF		OF
J. Reaves	1	E.G. Johnson	0				
	OF	J.R. Meyer	1F				
<u>MOTOROLA</u>	<u>3</u>	<u>WE GAMBITEERS</u>	<u>5</u>	<u>WE CHARGERS</u>	<u>4</u>	<u>ANL KNIGHTS</u>	<u>4</u>
N. Goncharoff	0	J. Warren	1	D. Kumro	0	S. Hihailovich	1
P. Greenspan	1	J. Sullivan	0	K. Dopheide	0	J. Jackson	1
J. Neumark	½	A. Pehas	½	C. Kimbler	½	M. Peterson	½
B. Micek	0	T. Catledge	1	J. Borromeo	½	E. Appelman	½
R. Ogasawara	0	W. Elliott	1	K. Dobr	1	G. Berry	0
D. Hernandez	½	E. Radivicius	½	G. Baxa	0	N. Beck	1
J. Henning	0	J. Brozovich	1	J. Licht	1	N. Dragel	0
H. Vick	1	M. Swiderski	0	J. Thomas	1	T. Patrician	0

SENIOR DIVISION STANDINGS - Continued

AMOCO	5	ANL PAWNS	3	ANL BISHOPS	6	ILLINOIS BELL	2
H. Schroeder	0	R. Wilson	1	C. Ward	1	K. Wollenberg	0
R. Barnes	½	L. Baker	½	D. Givens	0	G. Keith	1
L. Sheridan	0	W. Walsh	1	J. Wrobel	0	H. Tacon	1
J. Greczek	1	T. Renner	0	K. Kellogg	1	B. Racaitis	0
F. Jacobsen	½	Z. Tomczuk	½	L. Shirkey	1	J. Malone	0
R. Lee	1	J. McKee	0	K. Burba	1	K. Buell	0
M. Dee	1	J.R. Meyer	0	S. Decman	1	J. Peters	0
D. Roy	1	J. Ackermann	0	G. Kinsella	1	R. Lauth	0
				T. Janson	1	J. Spaulding	0
				E. Wallace	0	D. Smith	1
				F. Catania	0	D. Nielson	1
MOTOROLA	7	1st NAT'L. BANK	1				
N. Goncharoff	1F	W. Nyman	0F				
P. Greenspan	1	D. McCluskey	0				
J. Neumark	1	A. Schiller	0				
H. Vick	0	B. Downs	1				
B. Micek	1F		0F				
D. Hernandez	1F		0F				
J. Henning	1F		0F				
A. Trammel	1F		0F				

4 MAN DIVISION NOTES

The following methods will be used in determining which team will be eligible for the play-offs should a tie occur:

- 1) Game Points.
- 2) Head-to-Head Record.
- 3) Most Matches won.
- 4) Least amount of games forfeited.
- 5) Most games won.
- 6) Away record.
- 7) Home record.
- 8) Best record on boards one and four combined.
- 9) Best record on boards two and three combined.
- 10) Record in position night exhibition, and damn it if they're still tied, I'll flip a coin.

All regular League games must be completed and the results in my hands by Noon on Monday, April 9. If the matches are not completed or I am not notified a double forfeit will be declared. The position night exhibition must be completed and the results in my hands by Noon on Monday, April 30 or a double forfeit will be declared. The position night exhibition does not count in the Standings unless the match is forfeited, then the loss will be counted in the Final Standings.

4 MAN DIVISION NOTES - Continued

The play-off schedule is as follows:

Round 1: 1A) North second at South first and 1B) South second at North first. The winner of 1A) will play the winner of 1B) for first place. The loser of 1A) will play the loser of 1B) for third place trophy. Home teams on Round 2 will be announced later.

Round 1 will be played between 4/30 and 5/18; Round 2 will be played between 5/21 and 6/8. If a team should draw the first round match, the teams will change colors and play a 30/30. If that is drawn, the teams again will change colors and play another 30/30. If they are still drawn, the boards in the original match will be weighted as follows:

Board One - 5 points  
 Board Two - 4 points  
 Board Three - 3 points  
 Board Four - 1 point

If they're still tied, I'll flip a coin. If a team draws in the second round, they will be declared co-winners.

4 MAN DIVISION STANDINGS

NORTH				NORTH			
CONFERENCE A				CONFERENCE B			
Place	Team	Record	Points	Place	Team	Record	Points
1	Procon	8-3	31½	1	I.M.C.	10-0	32½
2	Alumni	8-2	26	2	Signode "A"	7-2	28
3	Rauland-Niles	6½-3½	23	3	Rauland-Melrose	4½-5½	18½
4	Sears	6-4	23½	4	N.A.L.	3-6	17
5	Curtiss Candy	4½-6½	21½	5	Int'l. Harvester	3-4	13½
6	Desoto	2½-7½	12½	6	Signode "B"	2½-7½	11
7	Allied Van Lines	½-9½	5	7	Kraft	2-5	7½

SOUTH				SOUTH			
CONFERENCE A				CONFERENCE B			
Place	Team	Record	Points	Place	Team	Record	Points
1	Chicago Title & Trust	8½-2½	27	1	Bell Labs	10½-½	36½
2	R.R.D. "A"	7½-2½	26	2	C.C.C.	8-2	31
3	E.B.	6½-3½	23½	3	Sherwin Wms.	6-4	26½
4	Amoco	5½-4½	22	4	R.R.D. "C"	6-4	21
5	CNA	4½-5½	22	5	Interlake Whites	3½-7½	18
6	R.R.D. "B"	2-7	11½	6	C.R.A.	3-9	12½
7	Interlake Blues	½-9½	9½	7	Kool Aid	0-12	2½

UNDEFEATED PLAYERS (5 Or More Games)

Name	Team	Board	Record
Bill Kenny	C.N.A.	1	9-0-0
Chet Lee	C.C.C.	1	7-0-0
Horst Metz	I.M.C.	2-3-4	7-0-0
Steve Rudminas	E.B.	3-4	7-0-0

OTHER PLAYERS WITHOUT A LOSS

NAME	TEAM	RECORD
Rick Edahl	Alumni	9-0-1
Dave Lawrenz	Bell Labs	7-0-1
Russ Crom	IMC	5-0-1
Dwight Kucera	Alumni	5-0-4
Hank Swanson	R.R.D. "A"	5-0-5

4 MAN DIVISION GAME RESULTS

SIGNODE "B" 2	KPAFT 2	NAL 1	SIGNODE "B" 3
R. Granath 0	B. Kaput 1	J. Nelson 0	R. Pasturczak 1
K. Andersen 0	P. Sherman 1	H. Suter 1	G. Schlenker 0
W. Oomens 1	M. Woods 0	E. Macheel 0	W. Oomens 1
J. Klein 1	L. Milazzo 0	L. Allen 0	J. Klein 1
SIGNODE "A" 4	INT'L. HARV. 0	IMC 3	RAULAND-MELROSE 1
A. Brosig 1F	OF	J. Galvin 1	L. Price 0
L. Stensaker 1F	OF	J. Honquest 1	R. Kling 0
A. Klein 1F	OF	E. Thompson 0	H. Tomlinson 1
R. Langenberg 1F	OF	D. Belter 1	J. Roelke 0
CNA 1	R.R.D. "A" 3	SEARS 2	PROCON 2
B. Kenny 1	G. Dobbins 0	E. Latimer 0	A. Stys 1
C. Huske 0	B. Herschberger 1	S. Schwartz 1/2	J. Kozacky 1/2
J. Moss 0	C. Henry 1	M. Wallace 1/2	Z. Dailidka 1/2
K. Suzuki 0	H. Swanson 1	T. Andresen 1	M. Viteri 0
RAULAND-NILES 4	ALLIED VAN LINES 0	SIGNODE "B" 1	RAULAND-MELROSE 3
R. Schulman 1F	OF	R. Pasturczak 0	L. Price 1
P. Miller 1F	OF	W. Oomens 1	H. Tomlinson 0
B. Rowe 1F	OF	J. Klein 0	J. Roelke 1
M. Fogelson 1F	OF	K. Andersen 0	H. Lange 1
ALLIED VAN LINES 0	CURTISS CANDY 4	SHERWIN WMS. 4	INTERLAKE 0
OF	A. Menafis 1F	H. Nettett 1F	OF
OF	J. Brotsos 1F	W. Yapp 1F	OF
OF	J. Brown 1F	T. Plaisance 1F	OF

4 MAN DIVISION GAME RESULTS - Continued

BELL LABS	2	CCC	2	R.R.D. "B"	4	INTERLAKE BLUE	0
D. Watters	0	C. Lee	1	J. Carlson	1	R. Fabijonas	0
J. Owen	0	J. Ellis	1	R. Burk	1	D. Chirko	0
D. Lawrenz	1	W. Gailus	0	R. Caine	1	T. Moynihan	0
J. Kulzer	1	C. Morris	0	L. Westerlund	1	J. Cornell	0
RAULAND-MELROSE	3	SYMONS	1	E.B.	4	C.T.&T.	0
S. Karlovics	0	T. Kirke	1	W. Stephan	1	I. Rosenfeld	0
J. Roelke	1	K. Alexander	0	H. Chapman	1	J. Dunworth	0
	1F		0F	S. Rudminas	1	W. Collings	0
	1F		0F	H. Sharp	1	G. Mergili	0
PROCON	4	CURTISS	0	ALLIED VAN LINES	1	DESOTO	3
A. Stys	1	A. Mengelis	0	K. Lisec	0	E. Zychowski	1
J. Kozacky	1	J. Brotsos	0	P. Sanders	0	J. Holyk	1
Z. Dailidka	1	J. Brown	0	R. Tronsig	0	M. Samachson	1
M. Viteri	1	W. Dahl	0	J. Byrns	1		0F
S. Dmy	1	P. Filmanowicz	0				

Solutions:

- #9 (L. Valve, 1945) 1. B-B7  
 #10 (G. Pachman, 1948) 1. Q-Q6

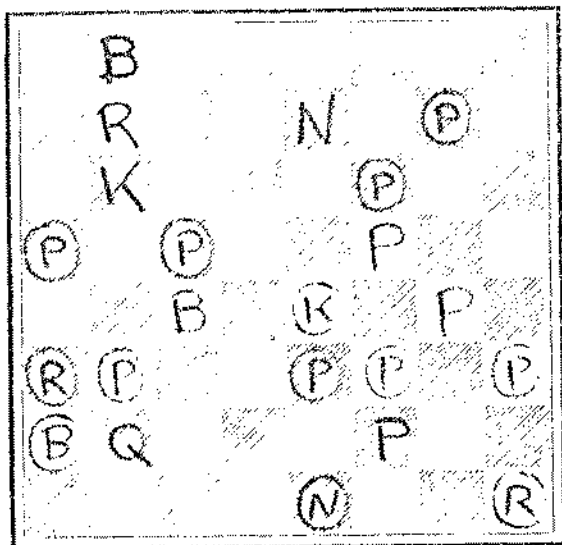
Solvers' Ladder

R. Gleason	22
J. warren	22
N. Goncharoff	20
J. Thomas	20
L. Wilson	20
J. Wrobel	20
G. Berry	16

The solving contest ends with the May issue. There are three prizes for the top scores. Contenders should supply solutions as complete as possible to these remaining problems -- I will use quality of solution to break ties. (In a 3-er, completeness will mean all distinct variations through the third move.)

Next deadline: April 23

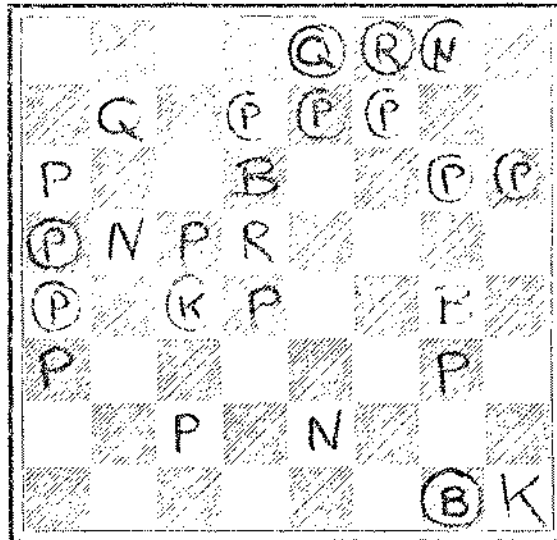
BLACK 13



White to  
 mate in 3 WHITE 9

# 11

BLACK 12



White to  
 mate in 3 WHITE 13

# 12



& Ampersand ratings are subject to very large fluctuations, as high as 200 or 300 points for results on just a couple of games. An & rated player may have played 8 or 9 games or more, the 4 or less means against players that have a # symbol or higher. & or % rated players games do not affect the ratings of established players or provisional rated players with a \* or # sign symbol.

This is the last season for ampersand ratings. (The 4 man division is in it's 4th year.) However, any player who has earned an Ampersand Rating or played at least 6 games in the current season will continue with an & rating (published) or have the ability to earn one. NEW ampersand ratings will not be possible in the 73-74 season unless a player meets the 6 game requirement from the 72-73 season. This change in policy will result in an eventual but gradual elimination of all Ampersand ratings.

SENIOR DIVISION BIG TEN

J. Warren 2093  
S. Mikhailovich 2041  
J. Jackson 2039  
F. House 1978  
J. Sullivan 1969  
F. Tegel 1969  
A. Pehas 1967  
G. Benson 1901  
D. Wilson 1888  
J. Ason 1886

A

Aldarondo, N %  
Aldort, L 1626  
Alexander, K %  
Algustyniak, A 1298#  
Allen, L %  
Allums, T %  
Andersen, K 1200&  
Anderson, D 1698\*  
Anderson, F %  
Andresen, T 1419\*  
Antepencko, B %  
Appelman, E 1559#

Boice, B %  
Borromeo, J 1607&  
Borucke, J 1200&  
Bosoms, J %  
Bradley, F 1451  
Brauneker, R 1279#  
Brenda, C %  
Brink, B %  
Brosig, A 1674  
Brosig, F %  
Brotsos, J 1692  
Brown, J 1456#  
Brown, Y 1303#  
Brozovich 1430&  
Buchanan, R 1549  
Buell, K 1505\*  
Buerger, E 2006  
Bujnocki, B 1510#  
Burba, K 1489  
Berk, B 1561\*  
Eutler, E 1730  
Byrns, J %

FOUR MAN DIVISION BIG TEN

B. Kenny 2084  
D. Kucera 2059  
E. Buerger 2006  
C. Lee 2003  
R. Edahl 1957  
E. Latimer 1922  
R. Schulman 1905  
I. Rosenfeld 1902  
A. Stvs 1858  
A. Mengelis 1856

Aratri, A %  
Arko, A 1200&  
Ason, J 1886  
Astrom R 1787

B

Bahr, C 1509&  
Bailey, P 1151\*  
Baker, L 1627  
Baran, R 1285\*  
Barnes, R 1633\*  
Barton, M 1353\*  
Barton, T %  
Baulmann, R %  
Baumann, R 1445&  
Baxa, G 1566\*  
Bazar, T %  
Beck, N 1477  
Benes, G 1335&  
Benson, G 1901  
Berry, G %  
Bialek, F 1588  
Bingle, J 1647  
Blair, B 1575\*

C

Caine, R 1542&  
Caine, W 1377#  
Caporusso, L %  
Carlin, J %  
Carlson, J 1462\*  
Carlson, W %  
Catania, F 1240  
Catledge, T 1860  
Cecchin, G %  
Cekis, G 1449\*  
Chapman, D 1472#  
Chapman H 1433#

25 or more games  
\* 10-24 games  
# 5-9 games  
& 4 or less games  
% insufficient games

DEFINITION OF RATINGS

25 games - very reliable  
(established rating)  
\* fairly reliable  
# some degree of reliab-

Blair, B 1575\*

## CHICAGO INDUSTRIAL CHESS LEAGUE RATINGS

MARCH 1970

Clark, R	1540*	Filmanowicz, P	%	Hynous, G	%
Cobb, D	%	Fischer, T	1224&		
Collings, W	1541*	Fitzei, D	%	I	
Cornell, J	1274&	Fogelson, M	1415*	Israel, G	%
Craven, K	1197#	Fortenak, D	%		
Crom, R	1519*	Fox, G	1786&	J	
Cropp, J	%	Frank, R	1239&	Jackson, J	2039
		Frederickson, R	%	Jacob, C	%
D		Frehse, G	1208&	Jacobsen, F	1443*
Dahl, N	%	Fritz, G	%	Janson, T	%
Dailidka, Z	1725*			Johnson, E(CCC)	1200&
Damkevala, B	1192#	G		Johnson, E(INL)	1200#
Danes, D	1602&	Gailus, W	1399*	Johnson, E G	%
Danner, J	%	Galvin, J	1615*	Johnson, F	%
Danniel	%	Gamble, L	%	Josiah, G	%
Dargis, R	1551*	Ganger, W	1663&		
Das, G	%	Gaudin, C	1597*	K	
Davis, B	1141*	Gawron, P	1750#	Kagemann, L	1442&
Davis, J	1463#	Gazarek, G	%	Kaput, R	1358#
Dawkins, E	%	Gestalu, E	1609*	Karedas, J	%
Dawson, J	1495	Gilmer, J	1561	Karloviics, J	1330&
Deboth, J	%	Givens, D	1552	Kasang, J	1278*
Decman, S	1323#	Gleason, B	1257*	Katada	1249#
Dedic, R	%	Goncharoff, N	1874	Keith, G	1447#
Dee, M	1443*	Gottlieb, I	1526*	Kellogg K	1391*
Delapena, J	1185#	Granath, R	1309#	Kenry, B	2084
Derby, C	1350&	Graczek, J	1548*	Keske, R	1773
Dever, D	1620	Green, E	1279&	Kiamco, R	1200&
Dmy, S	1200&	Greenspan, P	1594	Kilts, J	%
Dobbins, G	1663	Griggel, R	1509&	Kimbler, C	1635*
Dobr, K	1710	Grosskopf, L	1468#	Kinsella, G	1369#
Dopheide, K	1630	Gruber, D	1372	Kirke, T	%
Dragel, G	1392*	Guntis, J	1388&	Klein, A	1500*
Dubinin, M	1201*			Klein, J	1154*
Dunworth, J	1827	H		Klemm, J	1426
		Hajny, J	1200&	Kling, R	%
E		Hanks, J	%	Knott, H	%
Edahl, R	1957	Hanson, G	%	Koenig, M	%
Edwards, S	1494&	Harris, F	%	Kolling, K	1402*
Elliott, W	1794	Hartleb, P	1195#	Koppel, S	%
Ellis, J	1301	Havel, H	1409#	Kostoff, S	1328&
Ellison, M	%	Hawley, J	1651#	Kozacky, J	1764
English, B	%	Haywood, B	1329*	Kraeger, D	%
Everman, J	%	Henning, J	1524	Krohn, V	1864
		Henry, C	1665	Kucera, D	2059
F		Hernandez, D	1642*	Kulzer, J	1530#
Fabijonas, R	1765	Hoffins, J	1321#	Kumro, D	1797
Fajkus, J	1602	Holyk, J	1383*		
Falconer, E	1570&	Holzhauser, J	1230#	L	
Falk, J	%	Honquest, J	1333&	Ladrich, M	%
Feder, H	1423	Hopkins, R	1287#	Lange, H	1186#
Feiler, K	1825*	House, F	1978	Langenberg, R	1388*
Ferguson, R. C.	%	Howe, H	%	Lantz, C	1279
Fethiere, J	%	Hsiung, C	%	Latimer, E	1922

## L

Lawrenz, D 1328&  
 Leben, F %  
 Lee, C 2003  
 Lee, R 1511\*  
 Lepszy, R 1497#  
 Levy, M %  
 Licht, J 1406\*  
 Lisec, K %  
 Lisiecki, A 1203\*  
 Lo, J %  
 Lowenstrom, K 1200&  
 Lukes, D 1534&

## M

McCathren, V %  
 McCluskey, D 1468  
 McCoy, R 1770&  
 McKee, J 1199#  
 Mach, J 1482\*  
 Macheel, E %  
 Macs, J %  
 Malone, J 1474  
 Mangiaracina, N 1200#  
 Maroni, V 1053&  
 Marselos, N 1757#  
 Martiniak, G 1308  
 Mayer, T 1686#  
 Mazur, H 1539  
 Mejzr, M 1627  
 Mengelis, A 1856  
 Mergili, G 1427#  
 Metz, H 1401\*  
 Meyer, J.R. %  
 Micek, R 1655  
 Mikhailovich, S 2041  
 Milazzo, L %  
 Milowski, W %  
 Miller, P 1451  
 Mills, E %  
 Morris, C 1052#  
 Moss, J 1356&  
 Moynihan, E 1255#  
 Muir, L 1742  
 Myatt, A 995#

## N

Naemi, S 1370#  
 Nellet, H 1415\*  
 Nelson, J 1637&  
 Netzer, D %  
 Neumark, J 1721  
 Newberg, B 1173#  
 Noose, E 1587  
 Nyman, W 1954

Ogasawara, R 1581  
 Oomens, W 1420#  
 Osak, E 1384\*  
 Owen, J 1547&

## P

Paar, H %  
 Paauwe, N 1270#  
 Parry, R 1445&  
 Pasturczak, R %  
 Patlick, J 1816&  
 Patrician, T %  
 Pehas, A 1967  
 Peters, J 1310\*  
 Peterson, M 1584  
 Petlicki, J 1553  
 Pfaff, M %  
 Pfeffer, D %  
 Pfeffer, H 1365&  
 Pleasance, T 1167&  
 Pokorny, M 1478\*  
 Poole, G 1352&  
 Poppelreiter, J %  
 Prazak, C 1363&  
 Prete, J %  
 Price, L 1527#  
 Puto, E 1687

## R

Racaitis, R 1594  
 Radavicius, E 1556  
 Rajkovich, D 1684#  
 Rajski, R 897#  
 Renner, T %  
 Rhude, H %  
 Rierson, C 1835#  
 Roberts, J 1328#  
 Rodriguez, J 1743\*  
 Roelke, J 1200&  
 Rosen, J 1315&  
 Rosenfeld, I 1902  
 Rowe, B 1501\*  
 Roy, D 1110#  
 Rudminas, S %  
 Rudziewicz, M 1204#

## S

Samachson, M 1544&  
 Santiago, V 1777\*  
 Savigne, L %  
 Schiller, A 1391\*  
 Schlenker, G %  
 Schmidt, T %  
 Schroeder, H 1850

Schwartz, S 1742  
 Schwartz, W %  
 Sensabaugh, T %  
 Sharp, H 1006&  
 Shavers, R 1307#  
 Shaw, C %  
 Sheridan, L 1816#  
 Sherman, P %  
 Shirkey, L 1513  
 Shropshire, G 1513&  
 Simantel, L %  
 Singedias, P 1457  
 Sivers, D 1091&  
 Smith, T 1392&  
 Sobun, J 1511\*  
 Spaulding, J 1211&  
 Stahl, R %  
 Stamm, V 1482  
 Stanfield, L 1238  
 Stark, L 1417&  
 Stensaker, L 1369\*  
 Stephan, W 1809\*  
 Strugielski, R %  
 Stuenkel, L %  
 Stull, J 1280#  
 Stys, A 1858  
 Sullivan, J 1969  
 Suter, H 1257&  
 Swanson, H 1610  
 Swiderski, M 1273

## T

Tegel, F 1969  
 Tennicott, J %  
 Tesar, D %  
 Thomas, J 1255\*  
 Thomas, L 1306&  
 Thompson, E 1189\*  
 Thorman, J 1284\*  
 Tinder, C 1351\*  
 Tobias, R 1597\*  
 Tomeczuk, Z 1116#  
 Tomlinson, H %  
 Touzalin, R %  
 Trammel, A 1229#

## V

Vanscoit, J 1462#  
 Veleckis, E 1589  
 Vick, H 1685#  
 Viteri, M 1597\*  
 Voight, T %  
 Vonora, S %

## W

W

Walsh, W 1472  
 War, T %  
 Waz, T %  
 Ward, C 1689  
 Warren, J 2093  
 Warrick, A 1478&  
 Watson, R 1443\*  
 Watters, D 1593&  
 Weaver, D %  
 Wendorf, F 1586&  
 Wescott, R 1393&  
 Westerlund, L 1497&  
 Wettersten, H 1452  
 Wiegand, G %  
 Wilde, J 1475\*  
 Williams, C 1132&  
 Williams, J %  
 Wilson, D 1888  
 Wilson, R 1676  
 Winde, J %  
 Wolbur, J %  
 Wollenberg, K 1656  
 Woods, M %  
 Woscik, H %  
 Wright, E %  
 Rubel, J 1557  
 Wypijewski, D 1207\*

Y

Yang, P %  
 Yapp, B 1466&

Z

Zasada, J %  
 Ziegel, E %  
 Zychowski, E 1338\*

I want to thank the following captains:

R. J. Lee Amoco  
 J. N. Stull Nat'l. Acc. Labs  
 I. Roseanfeld Chicago Title & Trust

Your response to my request in bulletin #5  
 (Last page of ratings) is appreciated.

If I do not receive replies from Team Captains there is not  
 much I can do about the spelling of names in the  
 bulletin!

RATING CHAIRMAN

Dan Kumro

Correction: My dept. number is 509332 !

WARREN AWARD - LEADERS

Highest Ranked Player Award  
 (Seasonal Average)

8 MAN DIVISION

J. Warren 2087  
 S. Mihailovich 2045  
 J. Jackson 2031

4 MAN DIVISION

D. Kucera 2080  
 B. Kenny 2069  
 E. Buerger 2029

MOST IMPROVED - INCREASE

L. Baker 121  
 F. House 99  
 F. Bialek 89  
 A. Stys 80  
 J. Peters 76  
 D. Wilson 70  
 L. Aldort 67  
 R. Fabijonas 64  
 R. Walker 64  
 H. Mazur 58