

EDITOR: Jim Brotsos  
 Curtiss Candy Company  
 3401 Mt. Prospect Rd.  
 Franklin Park, Ill. 60131  
 921-0375 (Ext. 28)

RATINGS: Dan Kumro  
 Western Electric Dept. 509332  
 3800 Golf Road  
 Rolling Meadows, Illinois 60008  
 956-2297

PROBLEMS: Newman Guttman  
 Bell Telephone Laboratory  
 Naperville  
 Illinois 60540  
 682-3133

PRESIDENT'S NOTES - By: Jim Brotsos

U.S. Open Sets New Attendance Record

The 12-round U.S. Open Chess Championship was held in Chicago's LaSalle Hotel August 12-24. A record crowd of 778 entrants smashed the previous attendance record of 400.

The top winners, with 10 points each, were (in tie-breaking order):

- 1. Norman Weinstein Boston, Mass.
- 2. I.G.M. Walter Browne California
- 3. I.G.M. Duncan Suttles Vancouver, British Columbia
- 4. Greg Defotis Chicago, Ill.
- 5. Ruben Rodriguez The Phillipines

These (young) players each received \$1,100. In addition, Weinstein, 22, who played 6 out of the top 7 finishers, earned the trophy and title of U.S. Open Champion.

Those players with 9½ points were:

- Sal Matera New York
- I.G.M. Rev. Wm. Lombardy New York
- John Grefe California
- Dr. Leroy Duback New Jersey
- Craig Chellstorp Deerfield, Ill.
- Paul Brandts New York
- Milorad Boscovic New York
- Eric Bone Texas

Below are the results of C.I.C.L. members.

- |                            |                              |   |
|----------------------------|------------------------------|---|
| 1. Ed Latimer, Sears       | 8                            | 10. Walter Elliott, W.E.                            |
| 2. Tim Catledge, W.E.      | 8 (Including 2 forfeit wins) | 11. Vern Stamm, W.E.<br>(Including 1 forfeit win)   |
| 3. Jim Warren, W.E.        | 7½                           | 12. Nik Goncharoff, Motorola                        |
| 4. Jim Brotsos, Curtiss    | 7 (Played only 11 games)     | 13. Steve Decman, AIL                               |
| 5. Irv Rosenfeld, C.T.I.   | 6½                           | 14. Howard Pfeffer, NAL                             |
| 6. Ainis Mengelis, Curtiss | 6½                           | 15. Wayne Ganger, NAL                               |
| 7. Murrel Rhodes, CPC      | 6½                           | 16. Herb Wettersten, W.E.<br>(Played only 10 games) |
| 8. John Ason, Bell Labs    | 6                            | 17. Cletus Huske, CNA<br>(Played only 11 games)     |
| 9. Dan Kumro, W.E.         | 6 (Played only 10 games)     |   |

Goncharoff Wins U.S. Open "Warmup"

J. Ward has informed us that Nik Goncharoff shared a 2-way tie for first place in the Northern Illinois Chess Club U.S. Open Warmup Tornado, a USCF-rated tournament held on Aug. 4, 1973. Nik won \$45 in prize money. Following is a list of all CICL members participating in the 5-man tournament.

Place	Name	CICL Team	Tournament Score
1-2	Nik Goncharoff	Motorola	4-0

## PRESIDENT'S NOTES - Cont'd.

Some of our C.I.C.L. members also participated in the Illinois Open Held over the Labor Day weekend, but we have received no news of their results.

### New Teams - New Format

The C.I.C.L. welcomes the new teams entering League competition:

#### Junior Division:

General American Transportation Corp.  
CPC International (Corn Products)  
Harris Trust & Savings Bank - 2 teams  
Honeywell, Inc.  
The Kitchens of Sara Lee  
Sun Times-Daily News  
Symons Manufacturing Co.  
Veterans Administration  
Zenith Radio Corporation

#### Senior Division:

Bell Labs Chess Nuts  
National Accelerator Labs (expanded  
from 4-man team)  
Western Electric King's Men

We urge all new Team Captains to become familiar with the "Policies & Rules" of the C.I.C.L. especially Sections I.E. "Team Alignment," I.C.2. & 3. "Team Eligibility," and II. A.-J. Also, all captains are encouraged to pay dues and subscription fees to Irv Rosenfeld by October 15. Be sure to specify where Bulletins should be mailed. Tardy payment can mean discontinuance of the League Bulletin as a first step, and ejection from the team tournament as a second penalty.

Since the division by team strength has proven successful in the Senior Division, this program will be continued there.

However, in the Junior Division, the current team geography is conducive to returning to the geographic sectioning which will be used this season. Also, for the first time, two Co-Chairmen will manage the Junior Division - Terry Andresen will be responsible for the North & Central Sections, Dave Lawrenz, for the South & West Sections (Note: August directories were in error on this point).

John Greczek, who governs 30 Team Captains' votes, will be the Senior Chairman (see amendment dated August 22, 1972).

### Business Meeting

The minutes of the summer business meeting are attached to this Bulletin. All Team Captains with access to July's Bulletin No. 8 should note the amendment to the "Policies" allowing the Treasurer to maintain a checking account and making the co-signer for withdrawal of funds optional.

One point not properly covered in the minutes is the discussion on the content of the Annual Awards Banquet. Your President expressed the view that too much emphasis was placed on the Speed Chess Tournament and too little on the awards and social aspects. A vote of confidence assured that the Speed Chess event will continue as part of next June's program, but your President, working with Walt Oomens (the Entertainment Chairman), intends to explore other possibilities to round out a balanced program.

### Kolty Charms Tiny Turnout

On August 15 the League had the extraordinary good fortune to have George Koltanowski as a guest speaker. As outlined in Bulletin No. 8, this International Master is "Mr. Chess" or more aptly "Chess Superman." Next to Bobby Fischer, no one has done as much to promote U.S. Chess. George's talk covered the way world champions are determined and the current crop of candidates for 1975's challenge to Fischer's crown. (He predicts Lajos Portisch of Hungary will face Bobby.) He also had numerous anecdotes on humorous incidents in chess and commented on several of the old masters and world champions, and reconstructed the immortal game Morphy vs. Aliee Paris 1858. The last 15 minutes of the 1½ hour presentation

## PROJECTS NOTES - Cont'd.

...also due to Curt Kimbler who was most helpful in securing Albright Gym complete demonstration board, microphones, and stagelights for the occasion. Unfortunately, meagre turnout numbered less than two dozen. In retrospect it appears that the projection booth at DeSoto's auditorium would have served just as well for this puny showing as the gym at Western Electric. This great celebrity certainly deserved a better response this.

### Pen-Aways to Team Captains

A minuscule reward to Team Captains for their efforts in making the League programs a success, a blue ball point pen has been sent to each current captain. The pen is imprinted with the legend "Chicago Industrial Chess League - Founded 1957."

Each issue of Chess Life & Review received by the President (because the League is a U.S.C.F. affiliate) will be raffled off to one of our non-U.S.C.F. member Team Captains. Captains with prior years' service will be given extra tickets in the lottery. The copies of Chess Life & Review received from outgoing President Ron Tobias have been distributed to the following 1972-73 Team Captains after names were drawn by your President and Treasurer in August:

T. Bazar, International Harvester  
K. Andersen, Signode  
P. Gawron, Procon  
R. Shavers, R.R.D.  
J. Thormann, R.R.D.  
K. Craven, Goss

The winner of the Aug., '73 issue was John Kulzer of Bell Labs.

We hope the recipients of the magazine will enjoy receiving it. Many consider Chess Life & Review to be the best all-around chess magazine in the English language.

An additional prize will be raffled off to a lucky Team Captain at our Spring business meeting. As a premium for purchasing 200 of the C.I.C.L. pens, the League also received a miniature grandfather's clock made by Lux Division of Robertshaw Controls Co. At present, your President cannot think of a better use for this prize than to pass it on to one of our hard-working Team Captains.

### S.C.F. Membership Discount

Because the League is an affiliate of the U.S. Chess Federation, all members are entitled to a 25% discount in dues, \$8 instead of \$10 per year. This season nine League members have already taken advantage of this special rate.

Membership in the U.S.C.F. entitles one to receive the monthly Chess Life & Review, to play in U.S.C.F. rated events, and to purchase chess books and equipment at a discount from the Federation's catalog. The magazine alone is well worth the \$10. If you have chessplayers in your company club who are interested in joining the U.S.C.F., call Jim Brotsos at 312-21-0375, Extension 285, to obtain application forms.

### Alumni Fold

Team Captains are reminded that former players interested in continuing in League play after leaving your company are eligible to take part in the Alumni program. Unfortunately, the last remaining Alumni team in the League was dropped this year because of their inability to communicate with other Team Captains and League officials. This one team boasted three members of the Junior Division's "Big Ten." In fact, Dwight Kucera was one of our Warren

## MEMBERS NOTES - Cont'd.

### 30-30 Tournament

The Annual 30-30 will be a 45 minute per clock blitz-style tourney and will be held at the Hawthorne Works of Western Electric at 9:00 A.M., November 3. Registration will close at 8:50 AM. The games played are unrated, but this is still a good opportunity to play some sparkling chess and meet players from other sectors of our League. Since the rules of the tournament will be similar to blitz chess, no score-keeping will be required.

Note: Players must bring their own chess sets and clocks. The entry fee will be \$2.50 per person. All League members, their immediate relatives, or C.I.C.L. alumni (rated below Class B) are welcome to participate. Cash prizes will be distributed in 2 or 3 class categories depending on the profile and number of entries. More details on exact location will be reported in next month's Bulletin.

### James E. Warren Award

For the benefit of new teams, we would like to describe the Warren Award program which was approved at our business meeting on March 20. The awards are a tribute to Jim Warren's work in establishing our individual rating system in 1968 and acting as our Rating Statistician for four years.

The awards consist of three plaques each year. One each is awarded to the "Highest Ranked Player" in the Senior & Junior Divisions, respectively. This means the player who has attained the highest average rating during the season. One plaque is also presented to the "Most Improved Player" - the one with the greatest gain in rating points between the beginning and the end of the season. The awards are restricted to candidates who have completed at least 60% of their team's scheduled games and have an established rating based on the equivalent of 25 games by the end of the season.

### Committee Work

The minutes of our August 1 business meeting include names of members offering to work on committees. In addition to these, Ken Kellogg of ANL has volunteered to be our Publicity Chairman and Charlie Ward of the same club has offered to help organize our "Tornado" for next Spring. Dick Astrom has been appointed Chairman of the Century Club committee. Steve Schwartz of Sears will be our Awards Chairman.

We still need assistance to direct and make arrangements for our November Tournament. We also need a few volunteers to help in planning our June Banquet (especially if we are to have a Speed Chess Tournament), in organizing the special team matches, in polling Team Captains on '74-'75 nominations, and in helping plan and order awards.

The success of our programs depend on many willing volunteers taking an active part in League work. Our special events will be more punctual and more fun if we have ample assistance rather than relying on a half-dozen overworked committeemen trying to do everything. All clubs that have not come forth with volunteers this year are especially urged to "get in the swim." This includes our new team entries!

Call your President with names of members who want to participate in running our affairs or with questions about the jobs to be done.

### SENIOR DIVISION NEWS - By: John Greczek

#### New Season Gets Under Way

Ken Lisec (CICL Secretary) has mailed out the complete directory of Senior Division Captains and the schedules for Sections A and B. If any Captain does not have copies of these, get

SENIOR DIVISION NEWS - Cont'd.

Pretzel and Beer Match

Argonne hosted Bell Labs in a pre-season warm-up match on August 21. Both clubs agreed that the results should be used for rating purposes. Since Argonne had 19 players to Bell Labs' 13, three of Argonne's players went over to the other side. Argonne won by a narrow margin of 8½-7½. The complete results were as follows.

ANL	8½	BELL LABS	7½
S. Mihailovich	0	D. Wilson	1
G. Berry	0	F. House	1
C. Ward	0	B. Brenda	1
R. Wilson	½	N. Marselos	½
L. Shirkey	1	M. Barton	0
D. Dever	½	R. Watters	½
K. Kellogg	½	J. Owen	½
S. Ockers	1	J. Rosen	0
K. Coover	½	J. McAnany	½
T. Renner	1	H. Pfeffer	0
J. Wrobel	1	J. Walz	0
T. Janson	½	T. Hoffman	½
G. Dragel	1	R. Adld	0
K. Pevries	1	H. Knott	0*
R. Jaskoviak	0	G. Das	1*
J. Daley	0	K. Burba	1*

\*Indicates Argonne Player.

Player Ranking By Team Captains

The CIGL Policies and Rules state as follows: (II.D.1.)

"Team Captains will be responsible for making an honest effort to rank their players according to their current relative playing strength for each match. All available pertinent data at the club's disposal will be used, along with the Captain's judgment, in determining each rank.

Additionally, as a guideline we would like to have the Home Captain list his team first when requested to do so by the Visiting Captain.

JUNIOR DIVISION - NORTH & CENTRAL SECTIONS' NEWS - By: Terry Andresen

Harris Trust & Savings Bank was voted into the Junior Division by telephone poll taken by Andresen & Lawrenz by Labor Day. As the schedule was going to press, Harris Bank decided to enter a second 4-man team. The Harris Trust, as listed in the Central Section, will be designated as the "A" Team and the "B" Team will replace the "bye" position in the same section.

JUNIOR DIVISION CHANGES - By: Ken Lisec

Please make the following changes to your Junior Division Directory and schedule.

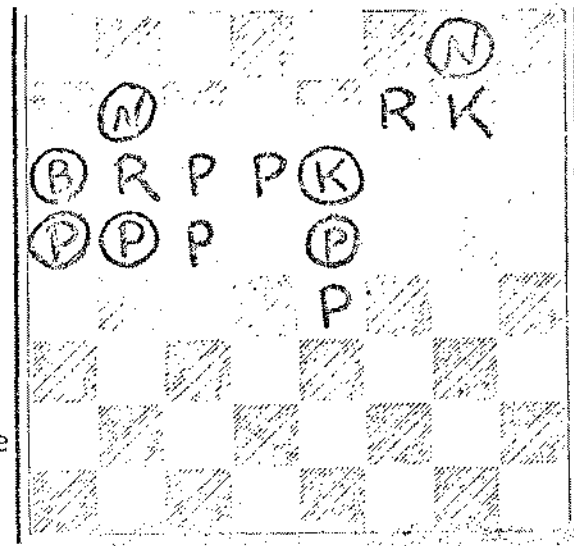
- (1) Please change Harris Trust (#4 Central) to Harris Trust "A".
- (2) Add Team 8 of Central as Harris Trust "B".
- (3) Round 2 matches for 3/4 to 3/15 first match should read:  
Home 1 vrs. 3 away instead 2 vrs. 3.
- (4) New Team - Team 8 Central

Harris Trust & Savings Bank "B"

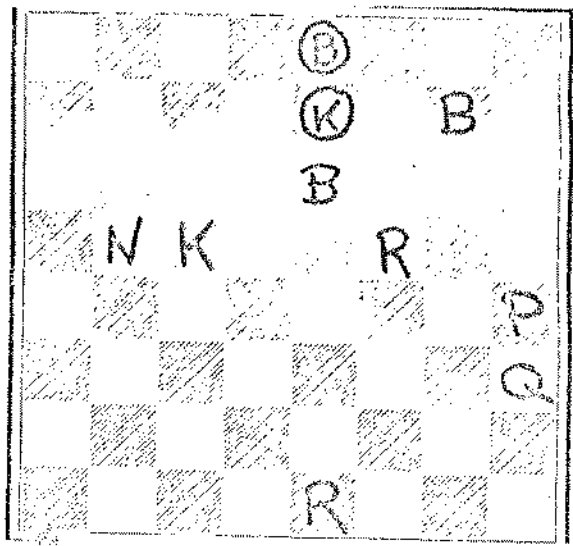
Nate Walton  
311 West Monroe

DEADLINE FOR #1 IS 1/15/73

John Rice 1973



Mate in 2 WHITE 7 Pieces



Mate in 2 WHITE 8 Pieces

We start the 1973-1974 season with the results of the 1972-73 competition.

J. Warren	36
R. Gleason	36
J. Wrobel	34
D. Wilson	34
N. Goncharoff	34

#13 (W. Jacobs, 1962)
1. N-Q2
#14 (F. Kohnlein, 1903)
1. P-B8(Q)

The three prizes were awarded to Warren and Gleason (perfect scores) and Wrobel. Tie-breaking was based on accuracy of detailed solutions. A full solution to Nos. 13 and 14 is too lengthy. I will send it to anyone asking for them.

Ground rules for the new season will be the same as the last. Each issue will offer problems for solving. Unless otherwise stated, participants in the solvers' ladder need send me only the key move (white's first). Points for a solution equal the length of the mate stipulation.

There will be at least two prizes - probably problem books. If enough solvers hang in through the year we will award three prizes.

This year I will add more commentary. I am presenting just one problem for solving in this issue in order to conserve space for a "how to solve" review. Roughly, here is how I went about solving A.

1. What can black do? No BK flight square, i.e., all squares around the BK are blocked by black or guarded by white. If N(N1) were to move, then white mates by R-K7 or R-B6. This "dual" is suspicious, since duals are frowned on in problem esthetics. Other black moves indicate that the key will have to provide a threat.

2. What is white's force? Slim, and R(N6) can be brought into play only by 1.P-B7 or P-Q7 since 1.RxN and RxP are obviously bad (besides, capture of an officer in the key is a virtually unbroken esthetic taboo).

3. Try 1.P-B7. It threatens 2.P-B8(Q) (also bishop promotion, but this dual is innocuous enough). 1...N-K2 defends but is met with the variation 2.RxN (notably, the dual in the "set play" has vanished); 1...NxP(B4) allows 2.P-Q7; 1...NxP(Q3), 2.RxN; 1...N-Q1, 2.PxN(N)! So far, so good. But there must be more to the problem than this. The white "half-battery" (the RPP alignment) implies that 1.P-Q7 would be interesting.

4. Try 1.P-Q7. The threat is 2.P-E6. 1...N-Q2 defends, but now the response is 2.R-B6; if 1...NxB4, 2.P-B7; if 1...N-Q3, 2.P-Q8(N). But 1...N-Q1! defends all mates in two.