

Vol. XVIII

No. 4

January 17, 1975

| | | | |
|------------|----------------|---|-------------------------|
| Editor: | Lee Sheridan | Amoco Chemicals | 420-5594 |
| President: | John Greczek | P. O. Box 400 Naperville, IL 60540 | 420-5602 |
| Problems: | Newman Guttman | Bell Telephone Labs Naperville, IL 60540 | 690-3133 |
| Division | Bob Micek | Senior Division | 693-6641 |
| Reporters: | Terry Andresen | Junior Division | 875-7977 |
| | Ned Anderson | Junior Division | 945-2525 (Ext. 2428) |

President's Notes - John Greczek

\$5 Million Prize Money Offered for World Chess Championship - Following the December 31 deadline for bids for the 1975 World Chess Championship, FIDE announced that the Philippines were the high bidders. The amount was disclosed to be a staggering \$5 million! The winner would receive around \$3.3 million and the loser the rest. The match would be held in Manila. Perhaps this colossal amount of money will yet persuade Bobby Fischer to face Karpov, the Soviet challenger. Bobby resigned his title in a dispute with FIDE concerning the rules for the match; he disagreed with the 36-game limit which includes draws.

New Computer Ratings a Success - As you will have already noticed, we are all now being rated by a computer. This is a great improvement compared to hand calculating the ratings. It is much faster, less prone to errors; and the ratings are automatically typed out ready to go into the Bulletin. Our Bulletin Editor, Lee Sheridan, deserves sincere thanks for being the one person most responsible in making this change possible. He is also currently acting as Rating Chairman. Also helping were Jim Warren and Jim Bingle. Thanks are also due for offers of help from Rich Shaff and Ken Lightbody.

Telephone Match with New York - Last season, we staged a telephone match with the Commercial Chess League of New York. Although we had some problems (not the least being that we lost!), on the whole the event was enjoyed by those who took part, judging by the various comments which we heard. Apparently, this was also the case with the New Yorkers. It was, therefore, agreed to have another match this season. Now we need someone willing and able to organize it. First of all, a tie line would have to be found. Last year, we provided one - at least for part of the match until it broke down - so perhaps this time New York should provide one. If, on the other hand, somebody from within our league can get one (how about the A.T.&T. contingent?), then please call me. Beyond that, there is work to be done contacting New York, arranging a firm date, picking our team, arranging for runners and telephone tellers and finally managing.

the event on the day in question. Again, as I have said before, these things don't get done by themselves; we need volunteers willing to help, otherwise we won't be able to hold this match. Incidentally, to streamline and speed it up, this time we would only have 15 boards and use two telephones, one to receive and one to send moves.

More Lively Pace in 1975 - Things in our league seemed unusually quiet as 1974 drew to a close. Perhaps that's normal with Christmas and New Year Holidays, etc. The new year is upon us, and I would like to take this opportunity to wish everyone a happy 1975. Also, we will soon be getting some events underway, such as the A.T.&T. vs. Rest and Senior vs. Junior Division matches. Charlie Ward is planning the annual Tornado and will announce it in the Bulletin in good time. Dick Lee is considering the possibility of a simultaneous exhibition with a prominent local player. The Bulletin will carry the announcements when these events have been finalized.

Bell System Plays Against Rest of the League on February 20 - Hobe Schroeder

Date - Thursday, February 20, 1975

Time - Registration - 6:30 p.m. to 7:00 p.m.
Match - 7:00 p.m.

Place - Amoco Research Center Cafeteria

The Amoco Research Center is located next to the East-West Tollway in Naperville. Going west on the tollroad, take Naperville Road Exit and turn left. At the first light (Warrenville Road), turn left again and drive about 1 mile.

This match is open to everybody in the league. The CICL rules will apply to the games including rating. It is the responsibility of the team captains to inform the members of their team and contact the team coordinators at least one week in advance.

Team coordinators are:

For the Bell System - Frank Tegel (982-3578)

For the rest of the league - Hobe Schroeder (420-5497)

Refreshments will be served. Each pair of players should bring a chess set and a clock. We are looking forward to a big turnout. Motorola is able to bring twenty players.

Senior Division News - Bob Micek

Senior Division Standings

Class A

| <u>Team</u> | <u>Won</u> | <u>Lost</u> | <u>Points</u> |
|-------------------|------------|-------------|---------------|
| ANL Knights | 3 | 0 | 17-1/2 |
| Motorola/Quasar | 3 | 1 | 20 |
| W.E. Gambiteers | 3 | 2 | 21-1/2 |
| Illinois Bell | 2 | 2 | 16 |
| Amoco | 2 | 2 | 14 |
| Bell Labs Dragons | 1 | 3 | 14 |
| W.E. Chargers | 0 | 4 | 8 |

Class B

| <u>Team</u> | <u>Won</u> | <u>Lost</u> | <u>Points</u> |
|------------------------|------------|-------------|---------------|
| W.E. Kingsmen | 5 | 0 | 29-1/2 |
| ANL Bishops | 4 | 1 | 23 |
| ANL Pawns | 2 | 3 | 20 |
| ITT Telecommunications | 2 | 3 | 19 |
| Bell Labs Chessnuts | 1-1/2 | 3-1/2 | 16-1/2 |
| Fermi (NAL) | 1/2 | 4-1/2 | 10 |

Class A Results

| | | | |
|----------------------|---------|------------------------|---------|
| <u>Illinois Bell</u> | 2-1/2 | <u>W.E. Gambiteers</u> | 4-1/2 |
| G. Keith | 0 | J. Warren | 1 |
| E. Sedlock | 0 | A. Pehas | 1 |
| K. Wollenberg | 1/2 ADJ | T. Catledge | 1/2 ADJ |
| J. DeBoth | 1 | D. Kumro | 0 |
| K. Buell | 1/2 | K. Dobr | 1/2 |
| W. Logelin | 0 | E. Puto | 1 |
| L. Young | ADJ | M. Swiderski | ADJ |
| F. Bohl | 1/2 | J. Thomas | 1/2 |

Class B Results

| | | | | | | | |
|--------------------|---|--------------|---|----------------------|----|------------------------|----|
| <u>ANL Bishops</u> | 6 | <u>ITT</u> | 2 | <u>W.E. Kingsmen</u> | 8 | <u>Fermi Lab (NAL)</u> | 0 |
| C. Ward | 0 | R. Sisler | 1 | J. Brozovich | 1 | W. Ganger | 0 |
| J. Wrobel | 1 | T. Fisher | 0 | W. Elliott | 1 | H. Pfeffer | 0 |
| D. Dever | 1 | M. Byckowski | 0 | W. Sund | 1 | R. Walker | 0 |
| L. Shirkey | 1 | J. Budiselic | 0 | R. Harringer | 1 | C. Moore | 0 |
| K. Kellogg | 1 | P. Yang | 0 | R. E. Lee | 1 | J. Stull | 0 |
| S. Decman | 1 | W. Ceritelli | 0 | P. Weston | 1 | H. Van Leesten | 0 |
| Scharping | 0 | A. Wilkins | 1 | B. Papiech | 1F | | 0F |
| G. Kinsella | 1 | R. Lochirco | 0 | R. Fish | 1F | | 0F |

| <u>Fermi Lab (NAL)</u> | 2 | <u>ANL Bishops</u> | 5 |
|------------------------|----|--------------------|----|
| H. Pfeffer | 1 | L. Shirkey | 0 |
| R. Walker | 1 | C. Ward | 0 |
| J. Stull | 0 | J. Wrobel | 1 |
| H. Suter | 0 | K. Kellogg | 1 |
| J. Boymonde | 0 | D. Dever | 1 |
| M. Goodman | 0 | R. Scharping | 1 |
| C. Moore | OF | G. Kinsella | 1F |
| | OF | | OF |

Junior Division News

Due to the uneven distribution of teams (10 in the North and Loop, 8 in the West and 6 in the South), each section will send its two best teams to the playoffs with the exception of the South Section which will only advance its best team. In addition to the above, we will have a wild card playoff team; the next best Junior Division team, by percentage of match wins, will also advance to the playoffs.

As long as we are discussing the playoffs, I would be interested in the team captains' feelings regarding the playoff system. Do you prefer the single-elimination system used in past years or the Swiss system, first used last year? Please forward your preference to your Division chairman.

Loop and South Section News - Terry Andresen

As we are approaching the halfway point in the season, Sherwin Williams and R.R.D. "A" both lead the South Section with identical records while in the Loop Section C.T.I. leads Sears "A" by 1/2 match point. An interesting point is that the only match played between each of the above-mentioned leaders resulted in a 2-2 tie.

Two new teams have been voted into the league: Chicago Transit Authority (C.T.A.) in the Loop and Continental Can in the South. The following information on these two teams should be added to your schedule and directory. Continental Can will be team No. 3 and C.T.A. will be team No. 1 in their respective sections.

Continental Can

Ray Fabijonas
Division 78
1200 West 76th Street
Chicago, Illinois
60620
471-0485
471-0484

Chicago Transit Authority

Merchandise Mart
Wells Street Entrance
Chicago, Illinois
Abe Wilson
8244 South Crandon
Chicago, Illinois 60617
375-7198 (home)
774-7100 (work)

Please make the following change to your team directory:

Sherwin Williams

Larry Simantel - Captain
821-3611

Bill Yapp - Alternate
821-3509

Junior Division Standings

Loop Section

| <u>Place</u> | <u>Team</u> | <u>Won</u> | <u>Lost</u> | <u>Points</u> |
|--------------|-------------|------------|-------------|---------------|
| 1 | C.T.I. | 2-1/2 | 1/2 | 8-1/2 |
| 2 | Sears "A" | 5 | 1 | 19 |
| 3 | 1st Nat'l | 2 | 1 | 6-1/2 |
| 4 | Sears "B" | 3 | 2 | 14 |
| 5 | Harris "B" | 2 | 2 | 7-1/2 |
| 6 | G.A.T.X. | 2 | 2 | 6 |
| 7 | Monsanto | 1-1/2 | 2-1/2 | 6-1/2 |
| 8 | Sears "C" | 0 | 3 | 2 |
| 9 | Harris "A" | 0 | 4 | 3 |

South Section

| <u>Place</u> | | <u>Won</u> | <u>Lost</u> | <u>Points</u> |
|--------------|------------------|------------|-------------|---------------|
| 1 | Sherwin Williams | 3-1/2 | 1/2 | 12 |
| 2 | R.R.D. "A" | 3-1/2 | 1/2 | 12 |
| 3 | C.P.C. | 1 | 3 | 5 |
| 4 | R.R.D. "B" | 2 | 2 | 6-1/2 |
| 5 | Chicago Metallic | 0 | 4 | 2-1/2 |

Junior Division Game Results

| | | | | | | | |
|-------------------|-------|-------------------|-------|-------------------------|---|-------------------|---|
| <u>Harris "A"</u> | 1-1/2 | <u>Harris "B"</u> | 2-1/2 | <u>Sherwin Williams</u> | 3 | <u>R.R.D. "B"</u> | 1 |
| Hardisty | 1 | T. Koutouvidis | 0 | B. Yapp | 1 | F. Leben | 0 |
| Vergara | 1/2 | N. Walton | 1/2 | L. Simantel | 1 | R. Baran | 0 |
| Martindale | 0 | M. Ertel | 1 | T. Plaisance | 0 | L. Westerlund | 1 |
| Steinert | 0 | R. Crowe | 1 | R. Pokusa | 1 | B. Davis | 0 |
| <u>Sears "C"</u> | 1 | <u>G.A.T.X.</u> | 3 | <u>Monsanto</u> | 0 | <u>Sears "A"</u> | 4 |
| Ossler | 0 | N. Eslinger | 1 | M. Saifullah | 0 | R. Reyes | 1 |
| Sutula | 1 | G. Vivian | 0 | R. Angeles | 0 | E. Latimer | 1 |
| Eleher | 0 | J. Albrecht | 1 | B. Eddy | 0 | S. Schwartz | 1 |
| Simms | 0 | J. Zimmer | 1 | E. Csordas | 0 | T. Andresen | 1 |

| | | | | | | | |
|-----------------------|-----|-------------------|-----|-------------------|---|-------------------------|---|
| <u>Fris "B"</u> | 0 | <u>Sears "B"</u> | 4 | <u>R.R.D. "B"</u> | 3 | <u>C.P.C. Int'l</u> | 1 |
| Koutouvidis | 0 | M. Strzelichowski | 1 | F. Leben | 0 | S. Parmarter | 1 |
| Ertel | 0 | T. Campbell | 1 | R. Baran | 1 | J. DesJardins | 0 |
| Walton | 0 | F. Ciba | 1 | B. Davis | 1 | J. Mudde | 0 |
| Crowe | 0 | J. White | 1 | W. Prete | 1 | A. Deleon | 0 |
| <u>rst Nat'l Bank</u> | 3 | <u>Sears "C"</u> | 1 | <u>R.R.D. "A"</u> | 4 | <u>Chicago Metallic</u> | 0 |
| Gastelu | 1 | G. Stone | 0 | G. Dobbins | 1 | R. Duzinskas | 0 |
| Mejzr | 0 | T. Sutula | 1 | R. Caine | 1 | D. Matthews | 0 |
| McCluskey | 1 | T. Keleher | 0 | H. Swanson | 1 | B. Sodomski | 0 |
| Williams | 1 | H. Simms | 0 | R. Burk | 1 | A. Stone | 0 |
| <u>T.I.</u> | 2 | <u>Sears "A"</u> | 2 | | | | |
| Wong | 1 | R. Reyes | 0 | | | | |
| Rosenfeld | 1/2 | E. Latimer | 1/2 | | | | |
| Dunworth | 1/2 | S. Schwartz | 1/2 | | | | |
| Mergili | 0 | T. Andresen | 1 | | | | |

North And West Sections - By Ned Anderson

Procon gained the # 1 spot in the West section by beating previously undefeated Curtiss Candy by the score of $2\frac{1}{2}$ - $1\frac{1}{2}$. Montgomery Wards has jumped from 5th. position to 3rd. position with consecutive victories over Sun Times and Zenith Chicago.

In the North section a real tight battle is being fought for the lead. No more than one match point separates Signode Red, Austin, Zenith Niles, and Teletype Knights. Signode Red has the edge with a perfect 5 - 0 record.

Frank Tegel of the Teletype Knights has a new telephone number 982 - 3578.

Position game # 1 for the North section is as follows:

| <u>Home</u> | <u>Away</u> |
|----------------|--------------------------|
| Austin | Signode Red |
| Zenith Niles | Teletype Knights |
| A. B. Dick | Alumni |
| Zenith Kostner | Teletype Rooks |
| Sara Lee | Signode Blue |
| Honeywell | Zenith Optics (resigned) |

| <u>West Team Standings</u> | <u>Won</u> | <u>Lost</u> | <u>Points</u> | <u>Pct.</u> |
|----------------------------|----------------|----------------|------------------|-------------|
| Procon | $6\frac{1}{2}$ | $\frac{1}{2}$ | 24 $\frac{1}{2}$ | .928 |
| Curtiss Candy | 7 | 1 | 25 | .875 |
| Montgomery Wards | $4\frac{1}{2}$ | $2\frac{1}{2}$ | 18 | .642 |
| Rauland M. P. | 4 | 3 | 19 | .571 |

| <u>North Team Standings</u> | <u>Won</u> | <u>Lost</u> | <u>Points</u> | <u>Pct.</u> |
|-----------------------------|------------|-------------|---------------|-------------|
| Signode Red | 5 | 0 | 16½ | 1.000 |
| Austin | 5 | 1 | 18 | .833 |
| Zenith Niles | 5 | 1 | 17 | .833 |
| Teletype Knights | 4 | 1 | 14½ | .800 |
| A. B. Dick | 3 | 2 | 11 | .600 |
| Alumni | 3½ | 2½ | 14½ | .583 |
| Teletype Rooks | 3 | 3 | 12 | .500 |
| Zenith Kostner | 2½ | 2½ | 12 | .500 |
| Signode Blue | 2 | 4 | 9½ | .333 |
| Sara Lee | 1½ | 3½ | 9½ | .300 |
| Honeywell | 1½ | 4½ | 9½ | .250 |
| Zenith Optics (resigned) | 0 | 14 | 0 | .000 |

North-West Match Results

Teletype Rooks 2 Zenith Kostner 2 Mont. Wards. 2 Rauland M. P. 2

| | | | |
|---------------|-----------------|---------------|----------------|
| J. Gilmer 1 | R. Bennett 0 | B. Liddell 0 | S. Karlovics 1 |
| S. Kostoff 0 | J. Trocha 1 | K. Ulickey 1 | J. Roelke 0 |
| R. Stergios 0 | C. Passarelli 1 | B. Occomy 0 | K. Moylan 1 |
| M. Pokorny 1 | A. Lev 0 | B. Bujnocki 1 | H. Tomlinson 0 |
| | | B. Hays 0 | V. Clinton 1 |
| | | R. Gefisey ½ | T. Miguel ½ |

Procon 2½ Curtiss 1½ Zenith Niles 3½ Honeywell ½

| | | | |
|---------------|------------------|---------------|-------------|
| A. Stys 1 | A. Mengelis 0 | B. Rowe ½ | W. Rossi ½ |
| J. Kozacky ½ | J. Brown ½ | T. Agpawa 1F | C. Marsh 0F |
| Z. Dailidka 0 | L. Caparusso 1 | M. Fogelson 1 | L. Perry 0 |
| M. Viteri 1 | P. Filmanowicz 0 | J. Chan 1F | ----- 0F |

W. E. Kingsmen 1 Zenith Chicago 3 Sara Lee 1½ Teletype Rooks 2½

| | | | |
|--------------|-------------|---------------|---------------|
| W. Whowell 0 | R. Brown 1 | N. Anderson ½ | J. Klemm ½ |
| J. Blazie 1 | K. Dassie 0 | B. Sivula 1 | J. Gilmer 0 |
| R. Zarn 0 | F. Conway 1 | F. Szatmary 0 | S. Kostoff 1 |
| M. Rench 0 | R. Nosko 1 | G. McGee 0 | P. Hartleb 1 |
| | | T. Brazeal 1 | R. Stergios 0 |

Zenith Kostner 3 Signode Blue 1 Mont. Wards 4 Sun Times 0

| | | | |
|-----------------|--------------|---------------|---------------|
| A. Lieberman 0 | G. Midkiff 1 | B. Liddell 1 | H. Fountain 0 |
| C. Passarelli 1 | J. Klein 0 | K. Vlickey 1 | R. Early 0 |
| J. Trocha 1 | A. Klein 0 | B. Occomy 1 | D. Syversen 0 |
| R. Bennett 1 | T. Rodda 0 | B. Bujnocki 1 | J. Kaylon 0 |

| | | | | | | | |
|--------------------|-----------|-----------------------|-----------|------------------|----------|-------------------|----------|
| <u>Signode Red</u> | <u>2½</u> | <u>Zenith Kostner</u> | <u>1½</u> | <u>Honeywell</u> | <u>1</u> | <u>A. B. Dick</u> | <u>3</u> |
| A. Brosig | ½ | J. Trocha | ½ | W. Rossi | 1 | G. Ort | 0 |
| L. Stensaker | 0 | C. Passarelli | 1 | R. Deeds | 0 | G. Wolcott | 1 |
| S. Huff | 1 | R. Bernett | 0 | L. Perry | 0 | R. Thompson | 1 |
| L. Koskins | 1 | A. Ley | 0 | C. Marsh | 0F | C. Gillham | 1F |
| P. Spanier | 1 | A. Lieberman | 0 | | | | |

| | | | | | | | |
|---------------|----------|---------------|----------|---------------------|----------|-------------------------|----------|
| <u>Austin</u> | <u>3</u> | <u>Alumni</u> | <u>1</u> | <u>Signode Blue</u> | <u>0</u> | <u>Teletype Knights</u> | <u>4</u> |
| R. Pejovic | 0 | J. Brotsos | 1 | G. Midkiff | 0 | F. Tegel | 1 |
| B. Basrai | 1 | S. Edwards | 0 | J. Klein | 0 | L. Aldort | 1 |
| A. Litvinas | 1 | J. Kasang | 0 | A. Klein | 0 | W. Sloan | 1 |
| N. Ansari | 1F | R. Clark | 0F | G. Schenker | 0 | D. Gruber | 1 |
| | | | | J. Bodie | 0 | R. Titus | 1 |

| | | | | | | | |
|----------------------|-----------|----------------------|-----------|-----------------------|----------|--------------------|-----------|
| <u>Rauland M. P.</u> | <u>1½</u> | <u>Curtiss Candy</u> | <u>2½</u> | <u>Zenith Chicago</u> | <u>½</u> | <u>Mont. Wards</u> | <u>3½</u> |
| S. Karlovics | 0 | A. Mengelis | 1 | K. Dassie | 0 | B. Liddell | 1 |
| J. Roelke | 0 | J. Brown | 1 | F. Conway | ½ | K. Vlickey | ½ |
| K. Moylan | 1 | L. Caparusso | 0 | D. Regan | 0 | B. Ocoomy | 1 |
| H. Tomlinson | ½ | P. Filmanowicz | ½ | R. Nosko | 0 | B. Bujnocki | 1 |

| | | | |
|-----------------------|-----------|---------------------|-----------|
| <u>Zenith Kostner</u> | <u>1½</u> | <u>Zenith Niles</u> | <u>2½</u> |
| C. Passarelli | ½ | R. Schulman | ½ |
| J. Trocha | 1 | P. Miller | 0 |
| R. Bernett | 0 | T. Agpawa | 1 |
| A. Ley | 0 | J. Chen | 1 |

Problems - Newman Guttman

At last, we can present solutions and solvers' scores:

1. (A. Dzektsers, 1974) Q-B1
2. (G. Goldschmeding, 1968) N-Q4
3. (G. Mentasti, 1961) R-Q5

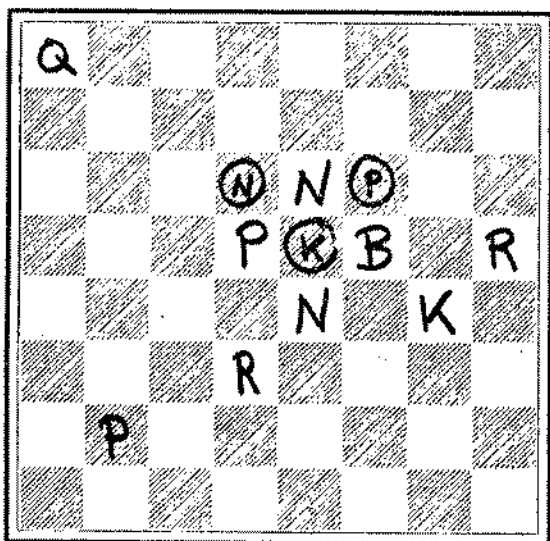
Solvers' results: 100 percent - R. Baran, C. Buckner, R. Burk, G. Gonscharoff, W. Monken, B. Olson, W. Sloan, J. Warren, D. Wilson; 67 percent - G. Berry; 33 percent - E. Csordas, J. Rustwick, W. Sobun.

This issue's 2er is one of my own compositions. Lots of horse play. No. 7 is the season's first 3er -- something light to start.

Deadline for Nos. 6 and 7: February 17, 1975.

#6

BLACK 3 pcs

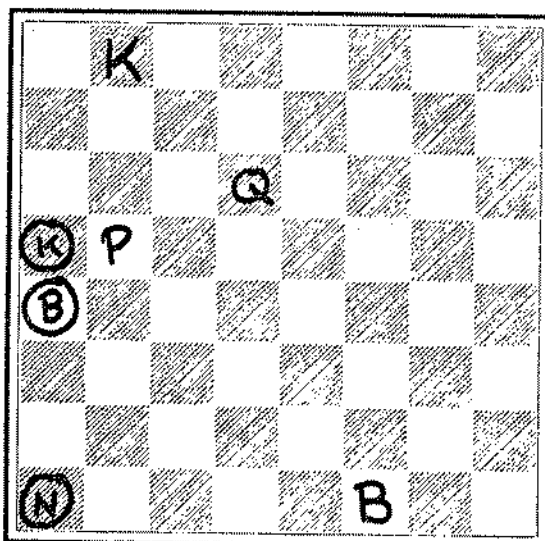


Mate in 2

WHITE 8 pcs

#7

BLACK 3 pcs



Mate in 3

WHITE 4 pcs

CHICAGO INDUSTRIAL CHESS LEAGUE RATINGS
 INCLUDING GAMES THROUGH BULLETIN NO. 3, 12/4/75

| PLAYER | TEAM | RATING | DIV | PLAYER | TEAM | RATING | DIV |
|--------------|-------|--------|-----|---------------|-------|--------|-----|
| AGPANA ,T | ZENLS | 1564# | 4 | DEBOTH ,J | ILBEL | 1638 | 6 |
| ALLOTT ,L | TKNT | 1594 | 4 | DECKMAN ,S | BHPS | 1415* | 6 |
| ALOJADO ,R | CHGR | 1522* | 8 | DEE ,R | AMCO | 1448 | 6 |
| ANDERSON ,D | DRGS | 1800 | 8 | DEEDS ,L | ROYAL | 1290* | 6 |
| ANDERSON ,R | SARAL | 1859* | 4 | DESJARDINS ,J | CPCL | 1255* | 4 |
| ANDRESEL ,T | SRS-A | 1492 | 4 | DEVER ,D | BHPS | 1576 | 6 |
| ASTROM ,R | DRGS | 1735 | 8 | DOLDIUS ,C | IND-A | 1732 | 4 |
| BAKER ,L | KRHT | 1645 | 8 | DOER ,K | CMTR | 1664 | 6 |
| BARAB ,R | IND-B | 1343* | 4 | DOHNS ,D | INDA | 1541* | 6 |
| BECK ,R | KRHT | 1540 | 8 | DRAGEL ,S | PAGE | 1445* | 6 |
| BELTER ,D | ABDCK | 1389# | 4 | DUNNORTH ,J | CHI | 1572 | 4 |
| BEREDEK ,R | KRHT | 2106 | 8 | DURSTON ,C | KRHT | 1762 | 6 |
| BENSON ,G | DRGS | 1818 | 8 | ELLIOTT ,H | KRHT | 1537 | 6 |
| BERRY ,G | KRHT | 1780* | 8 | ESLINGER ,A | GATX | 1692* | 4 |
| BINGLE ,J | KRHT | 1595 | 8 | FAJKUS ,J | CMTR | 1669 | 6 |
| BRENDA ,C | DRGS | 1710* | 8 | FEDER ,H | PAGE | 1590 | 6 |
| BROSIG ,A | S-RED | 1677 | 4 | FEILER ,R | PAGE | 1792* | 4 |
| BROTSON ,J | ALANI | 1627 | 4 | FILMANOVIC ,P | CHSC | 1532* | 4 |
| BROWN ,J | CHSS | 1545* | 4 | FOGELSON ,R | ZENLS | 1548* | 4 |
| BROZOVICH ,J | KRHT | 1676* | 8 | GANGER ,R | PERMI | 1551* | 6 |
| BUCIHAN ,R | PAGE | 1596 | 4 | GESTALC ,E | PAGE | 1707 | 4 |
| BUCKNER ,C | CHGR | 1513* | 8 | GILMER ,J | TKKS | 1566 | 4 |
| DELL ,R | ILBEL | 1515 | 8 | GORCHAROFF ,E | MTLA | 1697 | 6 |
| BERGER ,E | ALANI | 2023 | 4 | GRECZER ,J | AMCO | 1666 | 6 |
| BUJROCKI ,B | WARDS | 1276* | 4 | GREENSPAN ,P | MTLA | 1664 | 6 |
| BURBA ,R | BHPS | 1452 | 8 | GRIGGEL ,S | MTLA | 1592* | 6 |
| BURK ,R | IND-A | 1526* | 4 | GROER ,P | PAGE | 1191* | 6 |
| CAIN ,R | VAADE | 1529* | 4 | GROER ,D | TKNT | 1366 | 4 |
| CAINE ,R | IND-A | 1636* | 4 | HANSEN ,R | CHSKT | 1470* | 6 |
| CATANIA ,F | BHPS | 1267 | 6 | HARDISTY ,Q | IND-A | 1335* | 4 |
| CAYLEGE ,T | CMTR | 1691 | 6 | HARTINGER ,R | KRHT | 1349* | 6 |
| CIDA ,F | SRS-B | 1369* | 4 | HARTLEB ,P | TKKS | 1251* | 4 |
| CORRAY ,F | ZNTH | 1511* | 4 | HENNING ,J | MTLA | 1657 | 6 |
| COX ,R | MTLA | 1570* | 6 | HERNANDEZ ,D | MTLA | 1582 | 6 |
| DAILIDKA ,Z | PAGE | 1720 | 4 | HOUSE ,P | DRGS | 1562 | 6 |
| DALY ,J | PAGE | 1515* | 6 | JACKSON ,J | KRHT | 2021 | 6 |
| DANES ,D | PAGE | 1625* | 4 | JACOBS ,R | TKNT | 1902 | 4 |

| PLAYER | TEAM | RATING | DIV | PLAYER | TEAM | RATING | DIV |
|---------------|-------|--------|-----|----------------|-------|--------|-----|
| KARLOVIC ,S | RALND | 1409* | 4 | MUIR ,L | AMOCO | 1777 | 8 |
| KEITH ,G | ILBEL | 1670 | 8 | NAANI ,S | PRCON | 1415* | 4 |
| KELLOGG ,K | BSHPS | 1523 | 8 | NASSIF ,E | CHGR | 1494* | 8 |
| KESKE ,R | AMOCO | 1640 | 8 | NAVIGATO ,D | TINES | 1335* | 4 |
| KIMBLER ,C | CHGR | 1607* | 8 | NEUMARK ,J | STRLA | 1776 | 8 |
| KINSELLA ,G | BSHPS | 1391* | 8 | ROOSE ,L | DRONS | 1571 | 8 |
| KLEIN ,A | SBLUE | 1429* | 4 | ROSKO ,E | ZNYTH | 1471* | 8 |
| KLEIN ,J | SBLUE | 1291 | 4 | ROCKERS ,C | KRGM | 1261 | 8 |
| KNOFF ,H | PARKS | 1204* | 8 | OGASAWARA ,B | STRLA | 1690 | 8 |
| KOSTOFF ,S | TINKS | 1455* | 4 | PAPIECH ,D | KRGM | 1299* | 8 |
| KOUTOUVIDS ,T | HAR-B | 1500* | 4 | PARMENTER ,S | OPCIL | 1748* | 8 |
| KOZACKI ,J | PRCON | 1794 | 4 | PERAS ,A | CHGR | 1595 | 8 |
| KRAEGER ,D | KRGM | 1369* | 8 | PERRY ,L | HRYL | 1155* | 4 |
| KUCERA ,D | KRGM | 2051 | 8 | PETERS ,J | ILBEL | 1874* | 8 |
| KULZER ,J | CHSNT | 1544* | 8 | PETERSON ,J | PARKS | 1637 | 8 |
| KUMRO ,D | GRTR | 1737 | 8 | PFEPPER ,D | CHGR | 1330* | 8 |
| LANGENBERG ,R | S-RED | 1417* | 4 | PFEPPER ,H | FERMI | 1407* | 8 |
| LATIMER ,E | SRS-A | 1935 | 4 | PLAISANCE ,Y | SRS-C | 1377* | 4 |
| LAUTH ,R | ILBEL | 1353 | 8 | POKORNY ,E | TINKS | 1368* | 4 |
| LEBEN ,F | HRD-B | 1434* | 4 | PUTO ,E | GRTR | 1221 | 8 |
| LEE ,R | KRGM | 1460* | 8 | RACATHIS ,H | ILBEL | 1506 | 8 |
| LEE ,RJ | AMOCO | 1629 | 8 | RADVICIUS ,E | GRTR | 1522 | 8 |
| LEPSZY ,D | FERMI | 1424* | 8 | RENNER ,I | PARKS | 1340* | 8 |
| LIGHTBODY ,K | VAADR | 1618* | 4 | REYES ,E | SRS-A | 2192 | 4 |
| LITVINAS ,A | AUSTN | 1415 | 4 | RICHEY ,C | KRGM | 1361* | 8 |
| LOGELIN ,W | ILBEL | 1457* | 8 | ROBERTS ,J | HRD-B | 1292* | 4 |
| MADISON ,D | ADOCK | 1390* | 4 | ROELKE ,J | RALND | 1312* | 4 |
| MAKS ,J | ALANI | 1439 | 4 | ROSEN ,J | CHSNT | 1455* | 8 |
| MARSELOS ,N | DRONS | 1706* | 8 | ROSENFIELD ,I | CHI | 1685 | 4 |
| MARSH ,C | HRYL | 1329* | 4 | ROSE ,D | ZNYTH | 1515* | 8 |
| MCCANNY ,J | CHSNT | 1199* | 8 | ROY ,D | AMOCO | 1207* | 8 |
| MCOBE ,S | SARAL | 1244* | 4 | RUDNIRAS ,D | ALANI | 1706* | 4 |
| MCKEE ,J | PARKS | 1230* | 8 | RUDZISZCZAK ,N | TINKS | 1155* | 4 |
| MEJZH ,M | FRBK | 1546 | 4 | RUDZITIS ,E | KRGM | 1731 | 8 |
| MERGELIS ,A | CHSNT | 1959 | 4 | SCHROEDER ,N | AMOCO | 1757 | 8 |
| MERGILI ,G | CHI | 1413* | 4 | SCHULMAN ,W | ZNYTH | 1622 | 4 |
| MICEK ,R | STRLA | 1749 | 8 | SCHWARTZ ,S | SRS-A | 1735 | 4 |
| MIDKIFF ,G | SBLUE | 1044* | 4 | SEBLOCK ,E | ILBEL | 1796* | 8 |
| MILATOVIC ,S | KRGM | 1996 | 8 | SHAFF ,E | CHGR | 1621* | 8 |

| PLAYER | TEAM | RATING | DIV | PLAYER | TEAM | RATING | DIV |
|---------------|-------|--------|-----|---------------|--------|--------|-----|
| SHIRKEY ,L | BSHPS | 1615 | 8 | WILSON ,R | KNIGHT | 1348 | 8 |
| SIMANTEL ,L | SHRMS | 1269* | 4 | MOLCOTT ,G | ABDCK | 1625* | 4 |
| SIVULA ,B | SARAL | 1485* | 4 | WOLLENBERG ,K | ILBEL | 1632 | 8 |
| SNDARANAMN ,R | CHSNT | 1725# | 8 | WONG ,P | CTI | 1975# | 4 |
| SOBUN ,J | DRGNS | 1619 | 8 | WROBEL ,J | BSHPS | 1659 | 8 |
| STAMM ,V | CHGR | 1442 | 8 | YANG ,P | ITI | 1401* | 8 |
| STARKEY ,I | SBLUE | 1469# | 4 | YAPP ,B | SHRMS | 1456* | 4 |
| STEJSKAL ,J | CPCIL | 1521# | 4 | ZECHINATI ,J | AMOCO | 1406* | 8 |
| STENSAKER ,L | S-RED | 1440 | 4 | | | | |
| STULL ,J | FERMI | 1267* | 8 | | | | |
| STYS ,A | PRCON | 1913 | 4 | | | | |
| SUND ,W | KNOMN | 1522* | 8 | | | | |
| SUTER ,H | FERMI | 1214* | 8 | | | | |
| SWANSON ,R | HRD-A | 1338# | 4 | | | | |
| SWIDERSKI ,M | GMBTR | 1288 | 8 | | | | |
| SZATMARY ,F | SARAL | 1299* | 4 | | | | |
| TEGEL ,F | TTKNT | 2000 | 4 | | | | |
| THOMAS ,J | GMBTR | 1438 | 8 | | | | |
| TOMLINSON ,H | RALND | 1139# | 4 | | | | |
| TRERKA ,K | PAWNS | 1427# | 8 | | | | |
| VAN SCOTT ,J | FNBK | 1500* | 4 | | | | |
| VASTO ,D | ILBEL | 2166 | 8 | | | | |
| VELECKIS ,E | PAWNS | 1543 | 8 | | | | |
| VERGARA ,H | HAR-A | 1447# | 4 | | | | |
| VITERI ,M | PRCON | 1561* | 4 | | | | |
| VIVIAN ,G | GATX | 1495# | 4 | | | | |
| VOLPE ,M | ALMNI | 1466 | 4 | | | | |
| WALKER ,R | FERMI | 1471 | 8 | | | | |
| WALSH ,W | PAWNS | 1598 | 8 | | | | |
| WALTON ,N | HAR-B | 1308# | 4 | | | | |
| WALZ ,J | CHSNT | 1488# | 8 | | | | |
| WARD ,C | BSHPS | 1635 | 8 | | | | |
| WARREN ,J | GMBTR | 2074 | 8 | | | | |
| WATSON ,R | AMOCO | 1423* | 8 | | | | |
| WATTERS ,R | CHSNT | 1486* | 8 | | | | |
| WENDORF ,F | CHGR | 1556* | 8 | | | | |
| WESCOTT ,B | CHGR | 1371# | 8 | | | | |
| WESTON ,P | KNOMN | 1236# | 8 | | | | |
| WETTERSTEN ,N | CHGR | 1451 | 8 | | | | |

SENIOR DIVISION
* B I G T E N *

| | | |
|------------|----|------|
| BENEDEK | ,R | 2106 |
| WARREN | ,J | 2074 |
| WILSON | ,D | 2065 |
| JACKSON | ,J | 2021 |
| MIHAILOVIC | ,S | 1998 |
| PEHAS | ,A | 1945 |
| GONCHAROFF | ,R | 1897 |
| CATLEDGE | ,T | 1891 |
| ELLIOTT | ,R | 1857 |
| WILSON | ,R | 1848 |

JUNIOR DIVISION
* B I G T E N *

| | | |
|-----------|----|------|
| REYES | ,R | 2192 |
| BUERGER | ,E | 2023 |
| TEGEL | ,F | 2000 |
| MENGELIS | ,A | 1959 |
| LATIMER | ,E | 1955 |
| STYS | ,A | 1913 |
| DUNMORTH | ,J | 1872 |
| SCHULMAN | ,R | 1855 |
| ROSENFELD | ,I | 1845 |
| SCHWARTZ | ,S | 1833 |

MOST IMPROVED
PLAYERS

| NAME | CHANGE |
|--------------|--------|
| HARRINGER ,R | 77 |
| MADISON ,D | 64 |
| SEDLOCK ,E | 63 |
| BROZOVICH ,J | 60 |
| DEE ,M | 58 |
| YANG ,P | 56 |
| KLEIN ,J | 55 |
| SWARSON ,R | 55 |
| HARTLEB ,P | 55 |
| BROTSOS ,J | 49 |

RATING CLASS

| MARK | NO. OF GAMES |
|------|--------------|
| * | 5 - 9 |
| * | 10 - 24 |
| NONE | >24 |