

CHICAGO INDUSTRIAL CHESS LEAGUE BULLETIN

Vol. XVIII

No. 1

October 7, 1974

Editor:	Lee Sheridan	} Amoco Chemicals P. O. Box 400 Naperville, IL 60540	420-5594
President:	John Greczek		420-5602
Problems:	Newman Guttman	Bell Telephone Labs Naperville, IL 60540	690-3133
Division	Bob Micek	Senior Division	693-6641
Reporters:	Terry Andresen	Junior Division	875-7977
	Ned Anderson	Junior Division	945-2525 (Ext. 2428)

Editor's Welcome

In this first issue of the 1974-75 CIGL Season, I want to introduce myself and your league officers. The CIGL Bulletin will be edited by Lee Sheridan. The principal contributors to each Bulletin are:

John Greczek, League President
 Newman Guttman, Problem Editor
 Bob Micek, Senior Division Chairman
 Terry Andresen, Junior Division Chairman
 Ned Anderson, Junior Division Chairman

Phone numbers for these gentlemen are on the top of page 1 each month. The other league officers are:

Irv Rosenfeld, Secretary
 Gary Benson, Treasurer

This issue of the Bulletin is a bit wordier than usual. To compensate, there is no rating list this month. There have not been enough games reported to make a new list worthwhile. Incidentally, rating changes always lag the corresponding published game by one Bulletin issue. Keep this in mind as you watch for that giant step toward Master each month.

Inside this issue, you will find:

New Season Perspectives by John Greczek	Page 2
Historical Perspective	Page 3
Summary of Semi-Annual Business Meeting by Dick Lee	Page 6
A Letter to the CIGL Team Captains by Jim Brotsos	Page 9
A Note on USCF Membership by Charlie Ward	Page 11
Report on the U.S. Chess Championship by Gary Vondrasek	Page 11
Muir Draws Gligoric	Page 14
Senior Division News	Page 15
Junior Division News	Page 17
Problems by Newman Guttman	Page 20

New Season Perspectives - John Greczek

Another season has begun and, as President, I would like to take this opportunity to wish everyone an exciting and successful season. The CICL is growing rapidly. We now estimate well over 500 active members and have been joined this season by several new teams. There are areas, however, in which we have problems. It doesn't require much imagination to realize that to organize, coordinate and monitor all the season's activities of our sizeable league takes a lot of effort. Yet, for reasons which are difficult to understand, our members are slow in coming forward to volunteer help with the numerous jobs which must be done. If each of our members decided to help only once every ten years (!), we would be inundated with help - which we certainly are not. If we are happy to take what the league has to offer, what are we prepared to give in return? It is only too clear that for too many the answer is "nothing". Year after year, the burden is shouldered by a small handful of stalwarts: Jim Brotsos, Dan Kumro, Irv Rosenfeld, Steve Schwartz, Newman Guttman, Charlie Ward, Toni Walker. These are some names which quickly come to mind.

In several cases, these people have repeatedly performed some onerous task for many consecutive seasons. Dan Kumro, for instance, would put in 10 hours every month to do the ratings. Jim Brotsos is a powerhouse of ideas and actions if ever there was one. In a sense, when you boil it down, these people are the league; they alone make it viable. But there is a limit to what can be asked of them; and this season, several have been forced to give up what they have been doing for the league for a variety of different reasons. Well, now that we need them, where are the other 500 odd? I hope I'm not wasting paper in publicizing the fact that we need help, and I would like to hear from some volunteers. (More on this subject from past President Jim Brotsos in his letter appearing in this issue.) If you read this and remain unmoved, it can only be because you think someone else will do it anyway or you don't really care what happens to the CICL. Granted, there may be some who don't really care about the league, but surely their total number does not begin to account for the majority of our long-standing membership. If on the other hand, you think someone else will do it, you're dead wrong! Right now, the prospect is that some programs may be cancelled if volunteers cannot be found.

This season, we will begin to calculate ratings on a computer. Lee Sheridan of Amoco, who is also Bulletin Editor, has agreed to assume this responsibility. He will initially be assisted by Jim Warren during the transition period. Thanks are due to Jim Bingle of Argonne who got things moving in the first place by writing a program which Lee will use as a base to start with.

Unfortunately, Toni Walker is no longer our typist. She received a promotion to an entirely different job in which she will not be doing any typing. We convey our sincere thanks to her for the splendid help she gave the league in the past and wish her luck in her new job. Our new typist, and an outstanding one, that we were lucky to find is Debi Ewing of Amoco. Debi has agreed to type the Bulletin during this season, but we cannot, of course, assume that she will be willing to do it beyond that point. There is also the question of the Editor having access to the typing. It's obviously easiest if he and the typist both work for the same employer at the same geographical location. We are fortunate that R. R. Donnelly have agreed to continue their duplicating and mailing service. This is a tremendous bargain without which to continue the Bulletin would mean much higher expenses. Again, we cannot assume they will be willing to provide this service indefinitely; and a time may come when we'll have to face the issue of much higher subscription rates or no Bulletin at all.

A committee (Jim Brotsos, Alex Pehas, Paul Weston, Rick Shaff) is now already narrowing down their choices of a CICL letterhead and logo. Hopefully, we'll have the final thing before Christmas.

As you read the Bulletin and hopefully enjoy it, think about contributing to it.

Last, but not least, our purpose is to enjoy chess and so I hope we all do to the utmost during this season. Remember that a loss, painful though it may be, usually teaches more than a win.

Historical Perspective (Excerpts from Jim Brotsos' letter to Illinois Chess Bulletin)

The league was begun in 1957 and included six 8-man teams:

Western Electric	Stewart Warner
Illinois Bell Telephone	First National Bank of Chicago
Chicago Title and Trust	R. R. Donnelley & Sons

The one person who deserves credit for calling the organizational meeting that led to this league is Miroslav Mejser of the First National Bank. In our first year, each team played the other teams twice, once at home and once away. The first eight boards' results were called the Team Score; the results of these plus extra boards constituted the Club Score. At the end of the maiden season, the First National Bank's team won the trophy, 7½-2½; I believe that Western Electric won the club event, 9-1. The idea of club scores was dropped after this first year's experiment. Extra board matches were still encouraged, but they had no bearing on the team results.

In our first year, the only officer was M. Mejsr who was called the league Secretary. He collected dues, coordinated the simple schedule, and maintained the official match results records. In 1958-59, we added another office: Chairman. Our first Chairman was Hugh Williamson of S-W. Mirko Mejsr served as Secretary-Treasurer for several years. In our second year, we also gained a new team: Motorola. Western Electric won the championship. In our third year, we gained another powerful league member, Argonne National Laboratory. This team and Western Electric dominated the league for 13 seasons until 1971-72. In 1959-60, the writer served the first of two consecutive terms as Chairman. He introduced the first regularly published Bulletin giving results and other general news. In 1960-61, he also formed an All Star Team with competed in the then powerful Greater Chicago Chess League.

For several years, the league grew slowly. In addition to its team program, the league sponsored simultaneous exhibitions with such masters and IGM's as Sammy Reshevsky, Al Horowitz, Charles Henin, Rob Kirby, Poxvilas Tautvaisas, Bobby Fischer, and Greg Defotis. League members also participated in such extra events as Hospital chess, Prison chess, promotion of Koltanowski's (then) new chess column in the Sun-Times and teaching chess in the inner city boys clubs. Every year, the CICL held an annual awards banquet; the attendance to this has surpassed 100 the last two or three years.

Some of the special programs incorporated into the awards banquets were the showing of rare chess films such as Pudovkin's "Chess Fever" (1925), "Passionate Pastime" (1958), and the writer's films of the U.S. Open-Chicago (1963). We also had a speech by Frank Skoff, USCF Vice President in 1970 and in 1974. But the regular special event held each year after the awards are presented is the 7-minute Chess Tournament introduced by the writer in 1959 (the first year moves were timed by a single clock buzzing every 10 seconds, but this clumsy system was retired as more clubs acquired chess clocks).

In 1968, a major program was introduced into the league by former Chairman, James E. Warren, of Western Electric. He created a rating system which parallels the USCF system and put the system into a computer program. He acted as Rating Statistician for the first few years and made refinements to the rating procedure as required. This program is very popular among our members and Ratings are published every month after the season gets under way. It has also given greater stimulus to extra-board matches since these are rated.

Another item that was introduced into the CICL during its middle years was that of the Multiple Team. Larger companies such as Western Electric and ANL formed a second team. The latter also split off a third 8-man team. As some companies such as Stewart Warner and Sunbeam began to have difficulties fielding a full team, the idea of the combined dual-company team was tried. This was not a success and is no longer allowed.

A few years ago, Argonne National Laboratories was able to challenge the rest of the league and so a match of this nature was set up. As more clubs under the aegis of Ma Bell entered the league, this event was transformed into an AT&T vs. The Rest of the League Match. Last year, a 41 board match was held at Illinois Bell Telephone in the Loop; AT&T lost.

In 1969, the league had grown from the original six teams to 12 teams. At the August business meeting, the writer proposed that a new division of 4-man teams be created within the CICL. He brought the names of 8 companies that were ready to field this size team for the upcoming season. The league Chairman, Nikolai Goncharoff of Motorola, was very receptive to the idea; the league voted in the new wing and the writer was named acting Chairman. By the end of the season, the new (Junior) Division had grown to 12 teams. During that year, a By-Laws Committee revamped and amplified the Constitution and Rules to accommodate the new division. Additional offices were created. The league now instituted a President who presided over two Division Chairmen, a Secretary, and a Treasurer. The next year, the writer was elected the first President of the league. He went on to add another program to the by-laws permitting former league players to band together into Alumni teams and continue to participate in league affairs after leaving league-affiliated companies or after their company resigned from the league. These teams are not eligible for trophies. The Junior Division has now grown to 28 teams (for a total of 40 teams in the league). Their presence has also led to the natural All Star Match between top players of each division at the end of the season. We have also taken to publishing the Top Ten (Rated) Players of each division in the Bulletin.

Incidentally, one feature added to the Bulletin several years ago by Jim Warren is the Problem Solving Contest. During the last three years, Jim relinquished this chore to Newman Guttman, U.S. Representative to FIDE's Subcommittee on Composition. As you can see, we have some very well-qualified professionals handling our leadership and special features responsibilities. The member who, during the season, solves the most problems correctly within the prescribed time limit wins a trophy.

At the start of 1973, Ron Dargis, then President, left R. R. Donnelley and Ron Tobias became Acting President. One of his first decisions was to promote USCF membership by sponsoring a USCF one-day Tornado Tournament in June. This will be an open tournament but is intended to attract some of our hesitant league members into a USCF tournament. Mainly through the work of Irv Rosenfeld and the writer, the administration was persuaded to affiliate with the Federation, but little else was done to draw individuals into it.

Another program promoted by the writer is the establishment of the James E. Warren Award. This award is intended to do two things: give recognition to the splendid efforts and especially the creative work done by Jim Warren in developing our league Rating System and acting as our Rating Statistician for the first four years of the program. Also, the award recognizes chess

playing accomplishments by individuals. In the past, team play was stressed and awards were maintained on that level. The only individual awards given out were trophies for Problem Contest winners and (in the last few years) gavels and plaques to past league leaders. The committee assigned to this program developed two facets of the award:

1. An award to the highest rated player in each division.
2. An award to the player who has gained the most rating points during the season.

Thus, we are tying the awards back to the Rating System originated by Jim.

Currently, there are over 500 members of the CICL. Any group of employees from industry, commerce, governmental agencies or educational institutions are welcome to apply for membership. The annual fees are \$17 for a 4-man team and \$29 for an 8-man team. Generally, the only other requirements for entry into the league are evidence of ample chess players to support a team, at least one member willing to act as team captain, and a home base where games can be played after working hours. Matches are usually played Monday through Thursday nights about once every three weeks. Half of the matches are played at home. Clocks are used if available; our slowest rate of play is 45 moves in 2 hours. We have a first-class set of Policies and Rules by which we govern our activities.

In conversations and visits with Matt Pavitt, the writer has determined that the CICL is as good or better than the comparable Commercial Chess League of New York except for one fact: his league has more chess-playing talent. Our league has two chief assets: support and subsidy by corporations and a pool of mature, responsible businessmen from which we can draw competent leadership.

Summary of Semi-Annual Business Meeting

The Semi-Annual Meeting was held on August 29 at Amoco Research Center. Thirty-one members representing 19 companies attended. (List follows)

President Greczek opened the meeting by introducing new officers. Mr. Micek was elected by unanimous vote to replace Dick Lee as Senior Division Chairman. Dick resigned because of personal affairs. Treasurer Benson reported on the Budget. A deficit of \$128.76 for the past year was explained. A motion to raise dues for the Bulletin from \$5 to \$6 was passed by a majority vote.

Discussion on Motorola's request to maintain the same players on the New Motorola Team for one year culminated in a motion and passed by a majority vote - request approved.

The following new teams were voted into the Junior Division:

Monsanto Envirochem System, Inc.
Team Captain - Andy Csordas

Chicago Metallic Corporation
Team Captain - Ray Duzinkas

Alumini
Team Captain - S. Edwards

Western Electric: Kingsmen-4
Team Captain - T. Miller

A. B. Dick
Team Captain - Wolcott

First National Bank
Team Captain - Not Announced

Sears B
Team Captain - Not Announced

Sears C
Team Captain - Not Announced

ITT joins the Senior Division as a new member - captained by Bill Ceritelli.

Senior Chairman, Micek, gave proposed schedule: double round robins for both A and B sections. After much discussion, the motion was carried by a majority vote and Micek's proposal was adopted.

Junior Division Chairman, Anderson, gave the following proposed schedule for the 4-man teams:

North	10 teams	Single round robin
West	7 teams	Double round robin
South	7 teams	Double round robin
Loop	12 teams	Single round robin

After much discussion, it was decided to have the President and the Junior Division Chairman resolve the imbalance of number of teams in the four sections of the Junior Division and work out a more equitable schedule.

Miscellaneous - The following motions were approved:

1. Only guests can receive "free tickets" to annual banquet.

2. Acquire new league stationery
3. Telephone match with New York Industrial League approved.
4. 30/30 Tournament eliminated
5. Geographic Playing Boundary eliminated
6. The following Rules amendment was made:

"In cases of team ties involving trophies, all such tied teams will be involved in a play-off, the method of play-off to be decided by the Division Chairman."
(Replacing IIF3)

The meeting was adjourned at 9:00 p.m.

These minutes were respectfully submitted by Richard J. Lee.

Attendance

<u>Name</u>	<u>Team</u>
Charles E. W. Ward	ANL Knights
G. R. Benson	BTL Dragons
Ned Anderson	Sara Lee
Bob Micek	Motorola
Bill Ceritelli	ITT
Richard J. Lee	Amoco
Gary Wolcott	A. B. Dick Co.
Dick Zielinski	A. B. Dick Co.
Gary Vondcasek	W.E. Kingsmen
Tim Miller	W.E. Kingsmen-4
Rick Shaff	W.E. Kingsmen
Paul E. Weston	W.E. Kingsmen
Ken Dassie	Zenith
John Stull	Fermilab
Jim Daley	Argonne Pawns
Les Shickey	Argonne Bishops
Ray Lautl	Illinois Bell
Stan Edwards	Alumni
Peter Hartleb	Teletype
A. J. Kosteff	Teletype
Tom Jacobs	Hines Data Center
R. Duzenslas	Chicago Metallic
D. D. Manheim	Chicago Metallic
Endre	Monsanto Enviro Chem
Corbett Schuck	Monsanto Enviro Chem
Karel Dobr	W.E. Chargers
P. Yang	ITT
Nik Goncharoff	Motorola
Dick Astrom	Bell Labs Dragons

An Editorial Submitted by Jim Brotsos - Former President

A Letter to the CICL Team Captains
September 25, 1974

Our Team Captains have suddenly become afflicted with a new form of "chess blindness". At the August 29 Business Meeting, an overwhelming majority of Team Captains proved that it is unwilling to foster incentives for leadership, but made no move to reduce the services or simplify the task of this leadership.

The question arose, "Who should be entitled to complimentary meals at the Annual Awards Banquet?" The league's answer was "no league member should receive a free dinner at CICL expense!" Why show appreciation to our officers after they spend scores of hours of honest effort trying to maintain an active, equitable, entertaining program for 500-600 members?

This is the same type of thinking the writer found when he returned to the CICL in 1969 and discovered that in the prior year 60 percent (\$146) of the league's income was blown on prizes to members who took part in a 2-1/2 hour speed chess contest and that the kind lady (Natalie Goncharoff) who had typed the league Bulletin all year did not even receive a bouquet of daisies for her efforts. Also, the outgoing (after two years of excellent leadership) league head, Nik Goncharoff, received nothing more than a gavel (along with all the other prior league Chairmen who had led the league in simpler times).

It is important to understand that since 1969 the CICL has greatly stepped up its program and opportunities for awards or chess playing. When the league began, there was little more to the program than a double round robin tournament, among six teams, two trophies, and a simple awards banquet. The Bulletin did not even exist. By 1969, the league had grown to 12 teams and included a 30/30 tournament, an Argonne versus the Rest of the League match, and an annual speed chess tournament at the banquet.

Then a major event took place: the 4-Man Team Division was born! This led to a revision of the Rules and Procedures creating a larger administrative team headed by a new position - President. It also led to another annual event, the Senior versus Junior Division Match. The Alumni program was initiated; the James Warren Award was launched two years ago; and last year, the Century Club was inaugurated. In 1973, the first league-sponsored U.S.C.F. event - The Tornado - was begun and last year a New York-Chicago telephone match was added. The league grew from less than 200 members in 1969 to over 500 in the last few years.

It is easy to see that our activity has grown tremendously, so has the responsibility of the league administration. Years ago, a strong man and his Treasurer could effectively run the league. Since 1970, this has become impossible.

While all this proliferation of services and opportunity has risen, however, the league's ability to attract volunteer committee workers and officer candidates has shown no increase. Right now, John Greczek could use a dozen able members to assume key positions in spearheading our dynamic program. If these people do not step forth, John will have to either abandon certain events or carry them off in a second-rate manner or take an unfair extra load on his shoulders. Remember that just communicating with and guiding five other elected officers and an editor and a Rating Chairman and several other committee Chairmen is a tough job. Likewise, our Division Chairmen have jobs that are almost as difficult as the league Chairman's of a few years ago (they are tougher jobs except they do not have to get the Bulletin out). We should be seeking ways to encourage our members to take on responsibility in CICL affairs. The writer has certain ideas on how incentives could be established for our leaders, but there would be costs associated with them.

This brings us to another interesting point. In 1957, the dues for an 8-man team were \$10 per year. By 1964, the dues had been raised to \$20. In 1972, they were raised to \$24 (for the first 8-man team). We were able to raise our dues by 100 percent in the first seven years of our existence when all we needed the money for was two or three trophies and speed chess cash prizes. But in the next 10 years of our history, with an infinitely more energetic program, we managed to raise our dues by only 20 percent. Since 1967, the cost of living index has risen 50 percent; since 1972, when we last raised our dues, the cost of living has risen 20 percent. At the last business meeting, the writer proposed that, in light of inflation and our costlier awards program, we raise our dues to cover this cost escalation. Our administration is confident that we do not need more money to conduct 74/75 business and so the motion was withdrawn.

Some of the points made here were not brought forth at the August meeting because the meeting was running late at the time this matter was presented. But they should not be overlooked. For the first time in nine years of active membership in the CICL, the writer is neither a Team Captain nor a major officer of the league. Therefore, these comments come from a neutral position; they also come from intimate knowledge of prior workings of the league. A year ago, President Brotsos received approval from our Team Captains for a budget that included an estimated \$60 in expenditures for complimentary banquet meals. The actual meal expense was \$85.80 because dinner costs turned out to be higher than anticipated and because precedent called for certain non-elected workers to get free dinners. Last year's approved budget also included (for the first time) a gift of cash to our Rating Chairman. Now, just a year later, our Team Captains vote down complimentary dinners to our officers while approving a cash gift to the Rating Chairman. Is this being consistent?

It is easy to understand Nik Goncharoff's point of view that real leaders do not need extra gifts or rewards for serving their organization, and yet many organizations seem to be struggling to get and keep capable leaders. As a member of this year's nominations committee, the writer would certainly like to suggest to officer candidates some benefits to running for office.

I hope that by the next Business Meeting those Team Captains who voted against complimentary meals for our officers will present other recommendations for showing our appreciation to our major officers.

USCF Membership

All members of the CICL are encouraged to join the U.S. Chess Federation. Membership includes a subscription to Chess Life and Review, one of the world's best chess magazines, as well as allowing members to play in USCF tournaments from the U.S. Open down to the smallest local tournament. Members also acquire a nationally recognized rating and can buy chess books and equipment at a discount. CICL members may join or renew membership at a 20 percent discount from the normal rates, due to our league being a USCF affiliate. One year's membership for CICL members is \$8.00, two years' is \$15.20, and three years' is \$21.60. Send your check (made out to the U.S. Chess Federation) along with your name and mailing address to: Charles Ward, Building 362, Argonne National Laboratory, Argonne, Illinois 60439. Your check will be forwarded to the USCF along with certification that you are eligible for the 20 percent discount.

Team Captains are requested to send the names of team members who are currently members of the USCF to Charles Ward, for the purpose of establishing an up-to-date roster of USCF members in the CICL. Mail the names to the above address or telephone 739-7711, ext. 3181. Also, league members who are USCF Certified Tournament Directors are asked to notify Charles Ward.

Comments: 1974 United States Chess Championship - Round 4 - by Gary Vondrasek (Originally published in Kingsmen Review, Vol. 2 No. 13, July, 1974)

On Wednesday, July 17, I attended the tournament, my first adventure out into the chess world. Some of you are familiar with such events, but most of you, as I, never have been to any kind of a chess gathering. I would like to recount my evening in such a manner as to give a picture of what happens at such gatherings to those who have never seen one before.

The match was to begin at 6:00 p.m. I arrived at 5:15 p.m. and got a seat in the first row and in the middle. This was easy since I was the first one there. Four tables, two games at each (except for one), were set up in the front of the room. There were about 7 to 9 people milling around the tables, playing and watching. These were not the participants

but, I guess, members of the Chicago Chess Club. This went on until about 5:30 when someone asked the games to conclude because they had to set up for the evening's matches. My only negative impression of the whole evening was my first. It soon became apparent that the United States Chess Championship Contestants were going to play on \$2.00 "Rollezee" plastic roll-up boards. To me, this was astounding. I couldn't believe that the best players in the country, some of the best in the world, were going to play on such equipment. I mean no disrespect, and my apologies to members of the Chicago Chess Club, such as Jim and Helen Warren, but certainly the chess world should do better than that to bring prestige to High Caliber Chess as I was to observe. The pairings for the evening were:

- Board 1 - W--Bernard Zuckerman, 2390
 B--Larry Gilden, 2409
- Board 2 - W--Andrew Soltis, 2440
 B--Samuel Reshevsky, 2542
- Board 3 - W--Walter Browne, 2596
 B--Anthony Saidy, 2424
- Board 4 - W--Pal Benko, 2515
 B--Kenneth Rogoff, 2490
- Board 5 - W--Arthur Bisguier, 2464
 B--Andrew Karklins, (Chicago) 2424
- Board 6 - W--Norman Weinstein, (Open Champ) 2488
 B--Kim Commons, 2433
- Board 7 - W--Larry Evans, 2513
 B--John Grefe, (Defending Co-Champ) 2500

After three rounds, Walter Browne was leading 2 and a half points, and Anthony Saidy was in a multiple tie for second, 2 points. I choose to sit close to their game and observe each move. Each game was played by attendants for the audience (40 people) on large display boards on a wall where everyone could observe.

First to arrive was Saidy who is a nice looking man who sat down at his position and started straightening the pieces. He soon asked one of the attendants for a new board as his plastic board was so bad some of the pieces were tilting to the point of falling over. After looking over two other boards, he choose one and asked that it be taped to the green table cloth covering the table. It was and he again set up the pieces and sat fingering them and looking over the board. Zuckerman - long hair to his shoulders, long beard, and a shoulder bag, such as women carry, which he placed on the floor by his chair. Reshevsky - a slight, well groomed

gentlemen in a suit with open collar sport shirt. Pal Benko - glasses, just a regular looking guy who anyone might see anywhere. Besguire - by far the Beau Brummel of the contingent. Wine sport coat, maroon sport pants, multi-colored sport shirt and white shoes, and a small beer and/or pizza stomach. Commons and Weinstein - both low twenties and nice looking guys. John Grefe - long straight hair past his shoulders and wearing a Guru Maharje badge over his heart. And, who could miss Mr. Larry Evans - short, greying beard, distinguished looking and to this chess neophyte, a chess player's chess player.

At two minutes to 6:00 p.m., Mr. Richard Verber made a statement that the Grand Masters at the tournament have requested that the younger players not mill around the games of other younger players that are in time trouble and clear their throats and go through other awakening actions. He had one or two other comments relative to contestant conduct and then stated, "Gentlemen, start your clocks." At this point, I was befuddled as to if I had made a good decision to watch the Browne-Saidy match, because Mr. Browne hadn't arrived yet. He arrived six minutes into his clock and pushed the King Pawn 2. Walter Browne is a relatively younger player and is sort of a well-groomed mod looking guy who seems very introvertish.

Some general comments about all the games in general. The players spent a good portion of their opponent's clock during the openings away from the board. They would be looking at the other games (could this be chess openings by the book?). But as the games progressed to middle and end, every minute was spent at the board. Of real interest to me was the difference in mental approaches to the games. Reshevsky and Evans being calm and never batting an eye. Evans to the point of at times looking like he might be thinking of something else. At the opposite extreme, Gilden and Browne. Very nervous and obviously very, very intense players who outwardly go through considerable physical anguish.

Final Results - U.S. Championship 1974...Chicago
 (From Kingsmen Review, July, 1974)

		<u>1</u>	<u>2</u>	<u>3</u>	<u>4</u>	<u>5</u>	<u>6</u>	<u>7</u>	<u>8</u>	<u>9</u>	<u>10</u>	<u>11</u>	<u>12</u>	<u>13</u>	<u>14</u>	<u>Final</u> <u>Score</u>	<u>Final</u> <u>Position</u>
1.	Evans	x	½	1	½	1	1	½	½	½	1	½	½	0	½	8	3
2.	Weinstein	½	x	0	0	½	0	½	1	1	½	½	½	½	½	6	9
3.	Commons	0	1	x	0	0	1	0	1	0	0	½	½	0	1	5	12
4.	Grefe	½	1	1	x	½	½	½	0	1	½	0	½	½	½	7	7
5.	Rogoff	0	½	1	½	x	½	1	0	1	½	0	½	½	1	7	8
6.	Karklins	0	1	0	½	½	x	0	0	1	½	½	0	½	0	4½	13
7.	Saidy	½	½	1	½	0	1	x	½	1	½	½	½	½	½	7½	4
8.	Reshevsky	½	0	0	1	1	1	½	x	1	½	0	½	½	½	7	5
9.	Gilden	½	0	1	0	0	0	0	0	x	1	0	0	0	1	3½	14
10.	Soltis	0	½	1	½	½	½	½	½	0	x	0	½	½	½	5½	10
11.	Browne	½	½	½	1	1	½	½	1	1	1	x	1	½	½	9½	1
12.	Besguire	½	½	½	½	½	1	½	½	1	½	0	x	½	½	7	6
13.	Benko	1	½	1	½	½	½	½	½	1	½	½	½	x	½	8	2
14.	Zuckerman	½	½	0	½	0	1	½	½	0	½	½	½	½	x	5½	11

Walter Browne, a transplanted Australian, won the United States Chess Championship with a final score of 6 wins, 7 draws, and no losses. Second place finisher, Pal Benko, was also undefeated but had only 3 wins. Ask Nik Goncharoff what Pal Benko is famous for. Nik stuck it to your hapless editor with two Benko gambits in one night recently.

Muir Draws Gligoric (or is it Gligoric Draws Muir?)

On Sunday, April 21, 1974, Svetozar Gligoric and Florin Gheorghic gave a gigantic simultaneous exhibition in Chicago. The two grand masters were returning home from the Los Angeles International Tournament, which Gligoric won.

The Amoco Research Center Chess Club held a single elimination tournament to select one of its "regulars" to uphold the Club's honor against Mr. Gligoric. Larry Muir was selected and almost pulled out a win with the black pieces. Larry's game score follows:

Roy Lopez

White: Gligoric Black: Muir

<u>White</u>	<u>Black</u>	<u>White</u>	<u>Black</u>	<u>White</u>	<u>Black</u>	<u>White</u>	<u>Black</u>
1. P-K4	P-K4	20. P-Q4	PxP	39. K-N3	R-Q7	58. K-K4	R-K7
2. N-KB3	N-QB3	21. PxP	N-B3	40. K-B3	B-N4	59. K-Q3	R-QR7
3. B-N5	P-R3	22. P-Q5	N-K4	41. P-N3	PxP	60. P-N5	R-R6
4. B-R4	N-KB3	23. BxN	PxB	42. PxP	R-Q6	61. K-K4	RxR
5. O-O	P-N4	24. P-Q6	Q-N3	43. K-N2	RxP	62. KxR	K-N1
6. B-N3	P-Q3	25. K-R2	B-Q1	44. R-R1	R-N3	63. K-K4	K-B2
7. P-B3	B-N5	26. Q-B3	N-Q2	45. R-R4	B-B3	64. N-N6	K-K3
8. P-KR3	B-R4	27. QR-Q1	R-B1	46. N-B4	R-Q3	65. N-B4	B-B6
9. P-Q3	P-KR3	28. B-N3	B-N4	47. K-B3	B-B6	66. N-N6	B-Q7
10. R-K1	B-K2	29. N-K2	R-Q1	48. K-K4	P-QR4	67. N-B4	BxP?
11. N-Q2	O-O	30. N-K7	N-B3	49. N-Q5	B-K8	68. NxP	B-B3
12. N-B1	N-N1	31. NxB	PxN	50. R-R1	R-K3	69. N-B4	P-N4
13. N-N3	B-N3	32. Q-Q3	B-K6	51. K-Q4	B-N5	70. N-K3	K-B2
14. N-R4	K-R2	33. Q-B3	NxP	52. R-N1	R-K7	71. K-B5	K-K2
15. N-B5	P-B3	34. QxP	RxR	53. R-KB1	R-KR7	72. N-N4	K-B2
16. P-KB4	N-Q2	35. RxR	QxP	54. R-B3	P-R4	73. N-B2	K-K2
17. R-B1	PxP	36. QxQ	NxQ	55. K-K4	R-K7	74. N-K4	K-B2
18. BxP	N-K4	37. P-N4	N-B5	56. K-Q4	PxP	75. NxP	BxN
19. B-B2	P-B4	38. BxN	PxB	57. PxP	R-Q7	76. KxB	Draw

67 ... P-R5
 Wins

Senior Division News by Bob Micek

Preseason Practice Match - Amoco vs. Argonne

<u>Amoco</u>	4½	<u>Argonne</u>	3½
J. Greczek	0	R. Wilson	1
D. Lee	1	L. Shirkey	0
L. Muir	1	G. Berry	0
R. Watson	½	C. Ward	½
M. Dee	1	M. Peterson	0
J. Zechinati	1	K. Kellogg	0
T. Sellman	OF	G. Dragel	IF
V. Reinhardt	0	J. Daley	1

D. Roy	½	R. Scharping	½
T. Schmidt	OF	H. Feder	IF
H. Stone	½	K. Uherka	½

Senior Division Match Results - Class A

<u>Bell Labs Dragons</u>	2	<u>W.E. Gambiteers</u>	6	<u>Amoco</u>	6	<u>W.E. Chargers</u>	2
G. Benson	0	J. Warren	1	R. Keske	1	C. Kimbler	0
D. Anderson	0	T. Catledge	1	L. Muir	1	F. Wendorf	0
R. Astrum	0	D. Kumro	1	J. Greczek	1	V. Stamm	0
F. House	0	J. Fajkus	1	R. J. Lee	0	H. Wettersten	1
N. Marselos	1	E. Puto	0	M. Dee	1	E. Nassiff	0
C. Brenda	0	E. Radavicius	1	R. Watson	0	R. Wescott	1
J. Sobun	1	M. Swiderski	0	D. Roy	1	C. Buckner	0
L. Wykel	0	J. Thomas	1	V. Reinhardt	1	E. Kolen	0

Class B Results

"B" Section Senior Division

<u>W.E. Kingsmen</u>	6	<u>IT&T</u>	2
R. Shaff	1	W. Ceritelli	0
J. Brozovick	1	M. Bycowski	0
W. Sund	1	B. Smith	0
R. Harringer	1	S. Metti	0
D. Kraeger	0	P. Yang	1
P. Weston	1	J. Salvato	0
G. Vondrasek	0	R. Lochirco	1
B. Papieck	1	A. D'Amore	0

J. Farmer	1	E. Sanchez	0
J. Blazie (Jr. Div.)	1	G. Monino	0
A. Kojac (Jr. Div.)	IF		OF

<u>Bell Lab Chessnuts</u>	3	<u>A.N.L. Bishops</u>	5	<u>A.N.L. Pawns</u>	6	<u>Fermi Labs</u>	2
J. Rosen	½	J. Wrobel	½	B. Walsh	½	W. Ganger	½
J. Kulzer	½	L. Shirkey	½	G. Das	1	H. Pfeffer	0
J. Walz	0	D. Dever	1	E. Veleckis	0	R. Walker	1
B. Hansen	0	K. Kellogg	1	H. Feder	½	D. Lepszy	½
J. McAnany	0	S. Decman	1	J. Daley	1	J. Stull	0
D. Pfeffer	0	R. Scharping	1	T. Renver	1	H. Suter	0
J. Rustwick	IF	T. Janson	OF	K. Uherka	1	M. Protzer	0
F. Saloman	1	L. Thompson	0	G. Dragel	1	W. Andrews	0

				H. Knoff	0	J. Snow	1
				J. McKee	1	P. Dougherty	0

Junior Division News

Loop and South Section News by Terry Andresen -

The season is hardly a month old and we have already lost two teams: Alumni in the Loop and Interlake in the South. Please make the following changes to your directory of team captains: my new phone number at Sears is 875-7977; Andre Csordas' new extension at Monsanto is X-264; Tom Sutula's phone number with Sears "C" is 875-3426; the captain of the Sherwin Williams Team is now Bill Yapp at 821-3509 with Hank Nellet being the alternate at 821-3786; the last match scheduled for the third round (South section) should be changed to be identical to the last match in the first round; for the position rounds (Loop section), the current first place team will play the second place team, etc.

Since there have been so few games played, I will wait until the next

Junior Division Match Results

<u>C.T.I.</u>	2½	<u>Sears "B"</u>	1½
I. Rosenfeld	1	T. Campbell	0
J. Dunworth	1	F. Kuch	0
G. Mergili	0	F. Ciba	1
R. Amundsen	½	J. White	½
<u>C.M.C.</u>	1½	<u>R.R.D. "B"</u>	2½
R. Duzinkas	0	F. Leben	1
D. Matthews	0	J. Roberts	1
B. Sudomski	½	B. Prete	½
A. Stone	IF		OF
<u>G.A.T.X.</u>	3	<u>Monsanto</u>	1
N. Eslinger	1	R. Angeles	0
G. Vivian	0	B. Eddy	1
J. Albrecht	1	M. Saifullah	0
J. Zimmer	1	E. Csordas	0
<u>First National Bank</u>	1	<u>Sears "A"</u>	3
K. Feiler	0	R. Reyes	1
E. Gastelu	1	E. Latimer	0
B. Downs	0	S. Schwartz	1
M. Mejzr	0	T. Andresen	1

North-West by N. Anderson

Congratulations are extended to the new teams in the North Division on their first round victories. A. B. Dick squeaked out a close victory over a strong Zenith Niles team by a score of 2½ - 1½, and Austin won in style over Teletype-Knights 3 to 1.

Signode has returned to form this year as Adolf Brosig, Lee Stedsaker and Steve Huff pace the Reds with back-to-back victories over Sara Lee and Honeywell.

Bernard Alexander of Zenith-Optics failed to get the strong backing he was promised by his associates. When he was not able to come up with the full complement of players for the first game, he telephoned me and resigned his team for the year. All teams in the North Division will receive 4 forfeit game points and 1 match point.

There are two changes to the list of team captains; please record them in your directory for future reference:

Procon

Team Captain: Sam Naami: 391-3658 or 3638
 Alternate: Don Dondanes: 391-3825

Austin

Team Captain: Radovan Pejovic: 827-8833
 Alternate: Will Dakes: 827-8833

<u>WEST TEAM STANDINGS</u>	<u>WON</u>	<u>LOST</u>	<u>POINTS</u>
CURTISS CANDY	1	0	3-1/2
RAULAND M.P.	1/2	1/2	2
ZENITH	1/2	1/2	2
MONTGOMERY WARD	0	1	1/2
PROCON	0	0	0
V.A. DATA PROCESSING	-	-	-
W.E. KINGSMEN 4	-	-	-
SUN TIMES	-	-	-

NORTH TEAM STANDINGS

SIGNODE RED	3	0	10-1/2
AUSTIN	2	0	7
A. B. DICK	2	0	6-1/2
SIGNODE BLUE	1-1/2	1/2	6
ALUMNI	1-1/2	1/2	6
ZENITH-NILES	1	1	5-1/2
TELETYPE KNIGHTS	1	1	5
HONEYWELL	1	1	5
SARA LEE	1	1	4-1/2
RILEY	1	0	4
TELETYPE ROOKS	1	0	4
ZENITH-OPTICS	0	11	0

LEE 1/2

Anderson 0
 Sivula 0
 Szatmary 1/2
 McGee 0
 Mauer 1

DICK 2-1/2

Polcott 0
 Madison 1
 Kielinski 1
 Belter 1/2

FIN 3

Litvinas 0
 Pejovic 1
 Ansari 1
 Asrai 1

YWELL 1

Cossi 0
 Leeds 0
 Marsh 1
 Merry 0

SIGNODE RED 3-1/2

A. Brosig 1
 L. Stensaker 1
 R. Langenberg 1/2
 S. Huff 1
 E. Daliva 0

ZENITH NILES 1-1/2

R. Schulman 1
 P. Miller 0
 M. Fogelson 0
 J. Chen 1/2

TELETYPE-KNIGHTS 1

F. Tegel 1
 L. Aldort 0
 D. Gruber 0
 M. Rudziewiol 0

SIGNODE RED 3

A. Brosig 1
 L. Stensaker 1
 W. Blackstad 0
 S. Huff 1

SIGNODE BLUE 2

G. Midkiff 1F
 B. Wittmann 0
 J. Klein 1F
 A. Klein 0

RAULAND (MP) 2

S. Karlovics 0
 H. Tomlinson 0
 J. Roelke 1
 K. Moylin 1
 T. Miguel 0
 V. Clinton 1

CURTISS 3-1/2

A. Mengelis 1
 J. Brown 1
 L. Caparusso 1/2
 P. Filmanowicz 1
 W. Dahl 1/2

ALUMNI 2

J. Brotsos OF 1
 M. Volpe OF 1

ZENITH 2

R. Brown 1
 M. Aita 1
 F. Conway 0
 K. Dassie 0
 D. Reagan 1
 R. Nosko 0

MONTGOMERY WARD 1/2

K. Vlickey 0
 B. Ocomy 0
 B. Bujnocki 1/2
 G. Lifschultz 0
 B. Hays 1/2

Some would-be solvers in past years have been discouraged from actively participating in the solving contest because they think that they have no chance to win any award against the experienced and skillful solvers. At the suggestion of one of the latter, Don Wilson, and with the approval of the president of CICL, we are changing the awards criteria. We will give certificates to solvers scoring 75 percent and better through the year. Solvers, therefore, compete with themselves, not others.

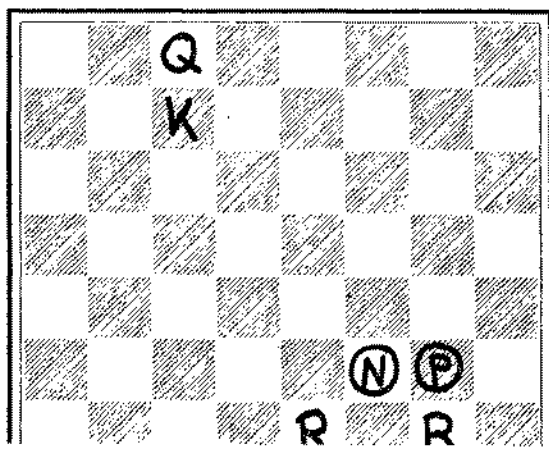
All problems will be "white to move and mate in x moves." In the diagrams, white moves up the board and the black pieces are circled. Unless otherwise stated, scoring will be done on the basis of correctness of the solver's claim for white's first move (the "key"). All problems are supposed to have but one key. A problem found to have more than one key will be withdrawn (with apologies).

No problem will breach the traditional problem esthetic: the key does not check the black king (BK); it does not capture a black officer; it does not take an unguarded square from the BK without giving at least one back. All in all, if your presumed key violates any of the above, look again.

Many readers have never met a chess problem before, so here is an analysis of one. It was composed by M. Lokker and was published in Shakhmaty (May, 1974). It seems certain that the WQ must enter into play. For starters, try 1. Q-B5 threatening 2. QxN mate. But we see that the pin puts black in stalemate. We mentally append "?" to this trial key, and look for another key. 1. K-N8? Black's only defense is 1...N-K8! If 1. Q-R6?, then N-Q7! (note 1...N-K8 2. R-N1 mate). Analogously, 1. Q-R3? N-R7! I haven't seen the published solution yet, but I believe 1. Qh8! solves. Now either 2. Qa1 or 2. Qh1 follows each BN move except 1...Ng5, which allows a "dual" of both Q mates. Rather pretty for only seven pieces. (I prefer the "algebraic" notation and will use it sometimes.)

Number 1 is the problem to be solved. Hint the WQ is again the "star." Solution by October 23, 1974.

BLACK 3 pieces



#1

BLACK 3 pieces

