



Chicago

Industrial

Chess

League

Chicago Industrial Chess League

Founded 1957

USCF Affiliate

July - August 1976

BULLETIN STAFF

Editor:	Paul E. Weston	Western Electric Co.	983-3605
President:	Irv Rosenfeld	6161 N. Hoyne Chicago, Ill. 60645	346-3282 (Ext. 24)
Problems:	Newman Guttman	Bell Telephone Labs Naperville, Ill. 60540	690-3133
Division Reporters:	Rick Shaff	Senior Division	983-3352
	Terry Andresen	Junior Division	875-7977
	Ned Anderson	Junior Division	945-2525 (Ext. 2428)
Ratings:	Lee Sheridan	Amoco Chemicals	420-5594

Table of Contents

	<u>Page</u>
Ratings and Team Rosters	1-16
Ratings Chairman's Report	17-19
Business Meeting Report	20-23
President's Report	24
Senior Division Report	25
Senior Division Standings	25
Junior Division Report	26-27
Banquet Report	28-29
Members' Games	30
Attachment A	

Notice: Business Meeting Announcement can be found in the
President's Report.

FRAT RATINGS

PLAYER	TEAM	RATING	DIV	PLAYER	TEAM	RATING	DIV
ASPAWA	,T ZNNLS	1546	4	CIBA	,F SRS-A	1469♦	4
ALDORT	,L TTY	1575	4	CONWAY	,F ZNITH	1564♦	4
ALOUADO	,M CHRGR	1640	8	COX	,M WARDS	1662#	4
AMUNDSEN	,R CTI	1285♦	4	COX	,R MTRLA	1544♦	8
ANDERSON	,D DRGNS	1787	8	DAILIDKA	,Z PRCON	1682	4
ANDERSON	,N SARAL	1793	4	DALEY	,J ROOKS	1329	8
ANDRESEN	,T SRS-B	1735	4	DARGIS	,R COCAN	1564	4
ANDREWS	,C KN6S4	1583#	4	DAS	,G KNIGHT	1534♦	8
ANGELES	,R MSNTD	1619#	4	DASSIE	,K ZNITH	1526♦	4
APPELMAN	,E PAWNS	1674	8	DAVIS	,B RRD-B	1193♦	4
ASTROM	,R DRGNS	1774	8	DAVIS	,J FNBK	1494♦	4
BAKER	,L KNIGHT	1584	8	DEBOTH	,J ILBEL	1679♦	8
BARAN	,R RRD-B	1315	4	DECMAN	,S BSHPS	1436	8
BECK	,N ROOKS	1476	8	DEE	,M AMOCO	1391	8
BENEDEK	,R ROOKS	2142	8	DELEON	,N PRCON	1652#	4
BENSON	,G DRGNS	1864	8	DESJARDINS	,J CPCIL	1336♦	4
BERRY	,G ROOKS	1826	8	DEVER	,D BSHPS	1586	8
BINGLE	,J KNIGHT	1599	8	DMY	,S PRCON	1362♦	4
BLAZIE	,J KINGMN	1690♦	8	DOBBINS	,G RRD-A	1689	4
BRAZEAL	,TD SARAL	1265	4	DOBR	,K CHRGR	1742	8
BRENDA	,C DRGNS	1731	8	DOMANUS	,H ROOKS	1694♦	8
BROSIG	,A SIGND	1753	4	DRAGEL	,G KNIGHT	1355	8
BROTSDS	,J EXCAL	1657	4	DUNWORTH	,J CTI	1861	4
BROZOVICH	,J KINGIN	1757	8	DURSTON	,C KNIGHT	1758	8
BUCHANAN	,R FNBK	1564	4	DUZINSKAS	,R CMC	1298♦	4
BUELL	,K ILBEL	1640	8	DYKSTRA	,D GATX	1191#	4
BUERGER	,E EXCAL	2072	4	EL BANHAM	,GE DRGNS	1703	4
BUJNOCKI	,B WARDS	1321♦	4	ELLIOTT	,W KINGMN	1738	8
BURBA	,K BSHPS	1496	8	ERTEL	,M HAR-B	1317#	4
BURK	,R RRD-A	1425	4	FABIJONAS	,R COCAN	1771	4
BURKE	,J AMOCO	1223#	8	FAJFAR	,DJ AMOCO	1376#	8
BYCOMSKI	,M ITT-4	1484♦	4	FAJKUS	,J KINGIN	1555	8
CAINE	,R RRD-A	1596	4	FARMER	,J KINGMN	1232#	8
CAMPBELL	,T SRS-A	1526♦	4	FEDER	,H PAWNS	1347	8
CAPPELLE	,E SARAL	1405	4	FEILER	,K FNBK	1770♦	4

WFLA RATINGS

PLAYER	TEAM	RATING	DIV	PLAYER	TEAM	RATING	DIV
GASTELU ,E	FNBK	1783	4	LANGE ,H	RALND	1143♦	4
GHAVIMI ,R	PRCON	1648♦	4	LANTZ ,C	TTY	1265	4
GILLHAM ,C	ABDCK	1523♦	4	LATIMER ,E	SRS-B	1670	4
GILMER ,J	TTY	1561	4	LAUTH ,R	ILBEL	1493	8
GOLLA ,R	SRS-B	1901	4	LEBEN ,F	RRD-B	1511♦	4
GONCHAROFF ,M	MTRLA	1849	8	LEE ,R	KNGMN	1454♦	8
GRDIC ,C	CHSNT	1356#	8	LEE ,RJ	AMDCO	1622	8
GREEN ,D	PAWNS	1502♦	8	LEMS ,B	SRS-C	1527	4
GREEN ,H	SARAL	1464#	4	LICHT ,J	CHGR	1409♦	8
GREENSPAN ,P	MTRLA	1611	8	LIDDELL ,B	WARDS	1794♦	4
GRIGGEL ,R	MTRLA	1382♦	8	LOBELIN ,W	ILBEL	1563	8
GRUBER ,D	TTY	1469	4	MACKAY ,A	RRD-B	1476#	4
HANSEN ,R	CHSNT	1510♦	8	MADISON ,D	ABDCK	1305♦	4
HARRINGER ,R	KNGMN	1482	8	MAGLIC ,R	KNIGHT	1653	8
HENNING ,J	MTRLA	1631	8	MAKS ,J	MTRLA	1417	4
HERNANDEZ ,R	COCAN	1398♦	4	MANGUARCHA ,N	ILBEL	1194#	8
HERSCHBRGR ,W	RRD-A	1610♦	4	MARSELD ,N	DRGNS	1698	8
HUFF ,S	SIGND	1429♦	4	MCANANY ,J	CHSNT	1364	8
JACKSON ,J	KNIGHT	2027	8	MCREE ,G	SARAL	1229♦	4
JACOB ,C	MTRLA	1508♦	8	MCKEE ,J	PAWNS	1157♦	8
JACOBS ,N	TTY	1865	4	MENARD ,J	DRGNS	1836♦	8
JACOBSEN ,FM	AMDCO	1370♦	8	MENGELIS ,A	EXCAL	1872	4
JOHNSON ,J	DRGNS	1915#	8	MERGILI ,G	CTI	1493	4
JONES ,J	CHSNT	1483♦	8	MIHAILDVIC ,S	KNIGHT	1993	8
KARLOVICS ,S	RALND	1773	4	MILLER ,P	ZNMLS	1567	4
KARPLUS ,H	PAWNS	1146♦	8	MOYLAN ,K	RALND	1673♦	4
KEITH ,G	ILBEL	1664	8	MUDE ,J	CPCIL	1296#	4
KELLOGG ,K	BSHPS	1467	8	MUIR ,L	ARC-4	1653	4
KESKE ,R	ARC-4	1764	4	MYSLINSKI ,	DRGNS	1549#	8
KIMBLER ,C	CHGR	1541	8	NAAMI ,S	PRCON	1400♦	4
KINSELLA ,G	BSHPS	1456	8	NELLETT ,H	SHWMS	1420♦	4
KLEIN ,A	SIGND	1433♦	4	NELSON ,S	FNBK	1445#	4
KLEIN ,J	SIGND	1206	4	NEUMARK ,J	MTRLA	1743	8
KLEMM ,J	TTY	1459	4	NYMAN ,W	FNBK	1815	4
KLING ,R	RALND	1235#	4	OCCOMY ,B	WARDS	1416#	4
KORACKI ,J	PRCON	1950	4	OKERS ,S	KNIGHT	1593	8

GMG RATINGS

PLAYER	TEAM	RATING	DIV	PLAYER	TEAM	RATING	DIV
PARKER ,L	KNGIN	1998♦	8	SLOAN ,W	TTY	1503♦	4
PARMETER ,S	CPCIL	1613	4	SNDARARAMN ,R	CHSNT	1682♦	8
PASTURCZAK ,RJ	SIGND	1276♦	4	SOBUN ,J	DRGNS	1622	8
PEHAS ,A	KNGIN	1991	8	STAMM ,V	CHGR	1578	8
PETERS ,J	ILBEL	1329♦	8	STEJSKAL ,J	CPCIL	1369♦	4
PETERSON ,M	ROOKS	1692	8	STENSAKER ,L	SIGND	1470	4
PFEFFER ,D	CHSNT	1451♦	8	STEPANEK ,I	KNGIN	1738#	8
PIASYSKI ,J	AMOCO	1299#	8	STREETS ,D	KNIGHT	2091	8
PLAISANCE ,T	SHWMS	1362♦	4	STUHLBARG ,D	PRCON	1562#	4
POKORNY ,M	TTY	1328♦	4	STYS ,A	PRCON	1864	4
POKUSA ,R	SHWMS	1345♦	4	SUDOMSKI ,B	DMC	1260#	4
RADAVICIUS ,E	CHGR	1623	8	SUND ,W	KNGMN	1549♦	8
REENTS ,W	PAWNS	1265#	8	SUTARIA ,B	COCAN	1316♦	4
REINHARDT ,V	AMOCO	1245#	8	SUTULA ,T	SRS-C	1758#	4
RENNER ,T	PAWNS	1524	8	SWANSON ,H	RRD-A	1657	4
REYES ,R	SRS-A	2258	4	SWIDERSKI ,M	CHGR	1371	8
RICHEY ,C	KNGMN	1414♦	8	SZATMARY ,F	SARAL	1337♦	4
ROBERTS ,J	RRD-B	1265♦	4	TABOAS ,A	ROOKS	1230#	8
ROBINSON ,R	MTRLA	1337♦	8	TACON ,H	ILBEL	1643	8
ROELKE ,J	RALND	1277♦	4	TEGEL ,F	TTY	2009	4
ROLEWICZ ,P	SRS-C	1626#	4	THOMAS ,J	KNGMN	1398	8
ROSEN ,J	CHSNT	1522	8	THOMPSON ,L	BSHPS	1200#	8
ROSENFELD ,I	EXCAL	1895	4	TINDER ,C	SHWMS	1414	4
ROTHSCHILD ,J	GATX	1279#	4	TITUS ,R	TTY	1200#	4
ROY ,D	AMOCO	1275♦	8	TOMCZUK ,Z	PAWNS	1209#	8
RUDZITIS ,E	KNIGHT	1752	8	TOMLINSON ,H	RALND	1331♦	4
RUSTMICK ,J	CHSNT	1337#	8	TUMALAD ,L	PRCON	1532#	4
SAIFULLAH ,M	PRCON	1734#	4	TURULA ,P	PAWNS	1172#	8
SCHARPING ,R	BSHPS	1523#	8	UHERKA ,K	ROOKS	1416♦	8
SCHROEDER ,H	AMOCO	1838	8	ULICKEY ,K	WARDS	1583♦	4
SCHULMAN ,R	ZNLS	1774	4	VELECKIS ,E	PAWNS	1502	8
SCHWARTZ ,S	SRS-A	1704	4	VICK ,H	MTRLA	1532♦	8
SCOTT ,G	ABDCK	1208#	4	VIKRIKAS ,T	GMBTR	1601	8
SEDLOCK ,E	ILBEL	1713	8	VITERI ,M	PRCON	1536	4
SHAFF ,R	KNGIN	1543	8	VIVIAN ,G	GATX	1405♦	4

CCF RATINGS

PLAYER	TEAM	RATING	DIV
WATSON	,R	AMOCO 1391♦	8
WATTERS	,R	CHSNT 1428♦	8
WENDORF	,F	CHGR 1508	8
WESCOTT	,R	CHGR 1324♦	8
WESTERLUND	,L	RRD-B 1344♦	4
WESTON	,J	AMOCO 1499♦	8
WESTON	,P	KNGMN 1325♦	8
WETTERSTEN	,H	CHGR 1427	8
WHOWELL	,W	KNGS4 1243♦	4
WILSON	,A	HOME 1634	4
WILSON	,D	DRGNS 2095	8
WILSON	,R	PAMNS 1820	8
WOLCOTT	,G	ABDCK 1582	4
WOLLENBERG	,K	ILBEL 1650	8
WONG	,P	CTI 1955	4
WOODS	,B	SARAL 1377♦	4
WRIGHT	,R	CPCIL 1474♦	4
YANG	,P	ITT-4 1472	4
YAPP	,B	SHMMS 1513	4
YOUNG	,L	ILBEL 1373♦	8
YUKNAVECH	,R	KNGIN 1526♦	8
ZABERZNSKI	,W	MTRLA 2152♦	8
ZECHINATI	,J	ARC-4 1458♦	4
ZIELINSKI	,D	ABDCK 1284♦	4

MOST IMPROVED PLAYERS

NAME	CHANGE
EL BANHAMY	,GE 227
KARLOVIC	,S 210
ANDRESEN	,T 155
TOMLINSON	,H 152
GREEN	,D 148
CHEN	,J 131
STAMM	,V 130
RENNER	,T 118
ROBINSON	,R 113
SWIDERSKI	,M 109

RATING CLASS

MARK	NO. OF GAMES
#	5 - 9
*	10 - 24
none	24 or more

SENIOR DIVISION

♦ B I G T E N ♦

BENEDEK	,R	2142
WILSON	,D	2095
STREETS	,D	2091
WARREN	,J	2027
JACKSON	,J	2027
MIHAILOVIC	,S	1993
PEHAS	,A	1991
KUCERA	,D	1991
BENSON	,G	1864
GONCHAROFF	,N	1849

JUNIOR DIVISION

♦ B I G T E N ♦

REYES	,R	2258
BUERGER	,E	2072
TEGEL	,F	2009
WONG	,P	1955
GOLLA	,R	1901
ROSENFELD	,I	1895
MENGELIS	,A	1872
LATIMER	,E	1870
STYS	,A	1864
DUNMORTH	,J	1861

TEAM...ABDCK

4-MAN DIVISION

PLAYER	PLAYER NUMBER	RATING	SEASONAL			
			WINS	LOSSES	DRAWS	POINTS
BADER	,S 447	0+	3	1	0	3.0
GILLHAM	,C 358	1523♦	4	6	1	4.5
LIMUNOVIC	,P 546	0+	0	0	1	0.5
MADISON	,D 143	1305♦	0	1	0	0.0
ORT	,G 355	1724♦	3	6	2	4.0
SCOTT	,G 445	1208#	4	4	0	4.0
WOLCOTT	,G 142	1582	3	6	3	4.5
ZIELINSKI	,D 144	1284♦	1	7	3	2.5

TEAM...AMOCO

8-MAN DIVISION

PLAYER	PLAYER NUMBER	RATING	SEASONAL			
			WINS	LOSSES	DRAWS	POINTS
BURKE	,J 490	1223#	2	3	0	2.0
DEE	,M 34	1391	2	6	2	3.0
FAJFAR	,DJ 476	1376#	1	6	1	1.5
FRAZIER	,A 470	0+	0	2	0	0.0
JACKSON	,W 499	0+	0	1	0	0.0
JACOBSEN	,FM 475	1370♦	0	3	0	0.0
KIANG	,WW 477	0+	0	3	0	0.0
LEE	,RJ 33	1622	2	3	2	3.0
MC GINN	,D 582	0+	1	1	0	1.0
PIASZYNSKI	,J 537	1299#	2	3	1	2.5
REINHARDT	,V 37	1245#	2	4	1	2.5
ROY	,D 36	1275♦	1	2	0	1.0
SCHMIDT	,T 491	0+	1	0	0	1.0
SCHROEDER	,H 206	1838	2	0	0	2.0
SELLMAN	,T 495	0+	1	2	0	1.0
SHERIDAN	,LA 205	1615	2	4	2	3.0
VRTIS	,J 500	0+	0	0	0	0.0
WATSON	,R 35	1391♦	2	2	0	2.0
WESTON	,J 419	1499#	3	4	0	3.0

TEAM...ARC-4

4-MAN DIVISION

PLAYER	PLAYER NUMBER	RATING	SEASONAL			
			WINS	LOSSES	DRAWS	POINTS
KESKE	,R 30	1764	4	5	1	4.5
MUIR	,L 31	1653	3	4	3	4.5
FRAUWE	,N 322	1331♦	5	2	1	5.5

TEAM...BSHPS

8-MAN DIVISION

PLAYER	PLAYER NUMBER	RATING	SEASONAL			
			WINS	LOSSES	DRAWS	POINTS
BURBA	.K 248	1476	5	3	1	5.5
CATANIA	.F 330	1222	1	3	1	1.5
DECMAN	.S 77	1436	5	5	0	5.0
DEVER	.D 75	1586	2	3	3	3.5
KELLOGG	.K 76	1467	5	4	1	5.5
KINSELLA	.G 249	1456	3	3	0	3.0
SCHARPING	.R 78	1523+	0	3	0	0.0
SHIRKEY	.L 74	1578	7	4	1	7.5
TEWARI	.K 583	0+	2	1	0	2.0
THOMPSON	.L 80	1200+	1	3	1	1.5
WARD	.C 247	1620	3	5	3	4.5

TEAM...CHRGR

8-MAN DIVISION

PLAYER	PLAYER NUMBER	RATING	SEASONAL			
			WINS	LOSSES	DRAWS	POINTS
ALDJADO	.M 325	1640	5	1	4	7.0
DOBR	.K 232	1742	6	2	5	8.5
KIMBLER	.C 38	1541	2	4	4	4.0
LICHT	.J 404	1409+	2	1	0	2.0
RADAVICIUS	.E 27	1623	6	2	0	6.0
STAMM	.V 40	1578	9	2	0	9.0
SWIDERSKI	.M 28	1371	3	3	1	3.5
WENDORF	.F 39	1508	4	2	3	5.5
WESCOTT	.R 43	1324+	3	3	1	3.5
WETTERSTEN	.H 41	1427	4	4	0	4.0

TEAM...CHSNT

8-MAN DIVISION

PLAYER	PLAYER NUMBER	RATING	SEASONAL			
			WINS	LOSSES	DRAWS	POINTS
BANKS	.B 575	0+	0	2	0	0.0
GRDIC	.C 487	1356+	2	6	2	3.0
HALAS	.M 588	0+	0	1	0	0.0
HANSEN	.R 68	1510+	0	1	0	0.0
JONES	.J 425	1483+	7	4	3	8.5
KINDT	.W 538	0+	0	0	0	0.0
LEE	.W 573	0+	0	1	0	0.0
MCANANY	.J 69	1364	5	6	0	5.0
PFEFFER	.D 70	1451+	3	2	1	3.5
ROSEN	.J 65	1522	2	6	3	3.5
RUSTWICK	.J 71	1337+	2	3	2	3.0
SHEBER	.J 421	1309+	4	7	1	4.5
SNDARARAMN	.R 254	1682+	0	1	0	0.0
WALZ	.J 67	1392+	1	5	0	1.0
WATTERS	.R 235	1428+	0	1	0	0.0
YEH	.K 496	0+	0	3	1	0.5

TEAM...CMC

4-MAN DIVISION

PLAYER	PLAYER NUMBER	RATING	SEASONAL			
			WINS	LOSSES	DRAWS	POINTS
DUZINSKAS ,R	109	1298+	0	2	1	0.5
KIMCEK	585	0+	0	0	0	0.0
MATTHEWS ,D	110	0+	0	0	0	0.0
SUDOMSKI ,B	111	1260*	0	3	0	0.0
MIENCEK ,D	520	0+	0	1	0	0.0

TEAM...COCAN

4-MAN DIVISION

PLAYER	PLAYER NUMBER	RATING	SEASONAL			
			WINS	LOSSES	DRAWS	POINTS
DARGIS ,R	439	1564	3	1	3	4.5
FABIJONAS ,R	397	1771	9	3	0	9.0
GAILUS ,M	399	1387+	1	3	0	1.0
GARZA ,F	513	0+	0	1	0	0.0
HERNANDEZ ,R	398	1398+	3	3	0	3.0
SUTARIA ,B	426	1316+	3	2	2	4.0
WENDELL ,B	553	0+	0	0	0	0.0

TEAM...CPCIL

4-MAN DIVISION

PLAYER	PLAYER NUMBER	RATING	SEASONAL			
			WINS	LOSSES	DRAWS	POINTS
DESJARDINS ,J	256	1336+	5	2	1	5.5
DRABIAK ,J	554	0+	1	1	0	1.0
GEIGER ,E	525	0+	1	2	0	1.0
MUDDE ,J	368	1296*	2	1	0	2.0
PARMETER ,S	266	1613	3	4	0	3.0
STEJSKAL ,J	257	1369+	1	3	2	2.0
URBAS ,B	524	0+	1	1	1	1.5
WRIGHT ,R	395	1474*	1	1	1	1.5

TEAM...CTA

4-MAN DIVISION

PLAYER	PLAYER NUMBER	RATING	SEASONAL			
			WINS	LOSSES	DRAWS	POINTS
DAVIS ,C	551	0+	0	0	0	0.0
HAWKIN ,B	579	0+	0	0	0	0.0
MATTHEWS ,J	432	0+	0	3	0	0.0
MC NEIL ,T	563	0+	0	0	0	0.0
PARKER ,LX	578	0+	1	0	0	1.0

PLAYER		PLAYER NUMBER	RATING	SEASONAL			
				WINS	LOSSES	DRAWS	POINTS
AMUNDSEN	,R	104	1285*	3	5	0	3.0
DUNWORTH	,J	102	1861	4	3	4	6.0
MERGILI	,G	103	1493	4	3	4	6.0
PETERSON	,P	517	0+	1	2	0	1.0
WONG	,P	277	1955	4	2	3	5.5

TEAM...DRGNS 8-MAN DIVISION

PLAYER		PLAYER NUMBER	RATING	SEASONAL			
				WINS	LOSSES	DRAWS	POINTS
ANDERSON	,D	15	1787	5	4	1	5.5
ASTROM	,R	16	1774	4	3	1	4.5
BENSON	,G	14	1864	4	2	4	6.0
BRENDA	,C	19	1731	4	1	1	4.5
EL BANHAWY	,GE	407	1703	8	0	1	8.5
GUTTMAN	,N	201	0+	3	1	0	3.0
JOHNSON	,J	539	1915*	6	2	0	6.0
MARSELOS	,M	18	1698	3	3	2	4.0
MEMARD	,J	328	1836*	1	3	1	1.5
MYSLINSKI	,	202	1549*	4	2	0	4.0
SOBUN	,J	20	1622	7	2	4	9.0
WILSON	,D	199	2095	2	1	3	3.5

TEAM...EXCAL 4-MAN DIVISION

PLAYER		PLAYER NUMBER	RATING	SEASONAL			
				WINS	LOSSES	DRAWS	POINTS
BROTSDS	,J	167	1657	8	3	1	8.5
BUERGER	,E	300	2072	9	2	0	9.0
EDWARDS	,S	287	0+	1	1	1	1.5
MENGELIS	,A	181	1872	8	0	1	8.5
ROSENFELD	,I	101	1895	10	1	1	10.5
VOLPE	,M	168	1395	1	5	1	1.5

TEAM...FNBK 4-MAN DIVISION

PLAYER		PLAYER NUMBER	RATING	SEASONAL			
				WINS	LOSSES	DRAWS	POINTS
BUCHANAN	,R	343	1584	1	0	0	1.0
CHAPLIK	,H	558	0+	0	2	0	0.0
DAVIS	,J	534	1494*	5	1	0	5.0
FEILER	,K	124	1770*	0	1	0	0.0
GAFFIGAN	,T	512	1474*	2	4	5	4.5
GASTELU	,E	125	1783	7	3	1	7.5

PLAYER	PLAYER NUMBER	RATING	SEASONAL			
			WINS	LOSSES	DRAWS	POINTS
ALBRECHT	,J 118	0+	0	0	0	0.0
DOLL	,G 566	0+	0	1	0	0.0
DYKSTRA	,D 440	1191#	1	1	0	1.0
FLORES	,R 535	0+	0	3	0	0.0
HANSEN	,RX 565	0+	0	2	0	0.0
KOHLER	,S 345	0+	0	0	0	0.0
ROGALSKI	,J 267	0+	0	3	0	0.0
ROTHSCHILD	,J 518	1279#	1	8	1	1.5
VIVIAN	,G 117	1405*	0	10	1	0.5
ZIMMER	,J 119	0+	0	6	0	0.0

TEAM...HAR-B

4-MAN DIVISION

PLAYER	PLAYER NUMBER	RATING	SEASONAL			
			WINS	LOSSES	DRAWS	POINTS
BRAGGER	,T 532	0+	0	0	0	0.0
ERTEL	,M 337	1317#	0	7	1	0.5
HENRIKSON	,S 531	0+	0	1	0	0.0
JOHNSON	,T 562	0+	0	0	0	0.0
RADCLIFFE	,G 533	0+	1	1	0	1.0
RAVERA	,H 580	0+	0	0	0	0.0

TEAM...HOWE

4-MAN DIVISION

PLAYER	PLAYER NUMBER	RATING	SEASONAL			
			WINS	LOSSES	DRAWS	POINTS
DECKER	,K 529	0+	0	2	0	0.0
HARDER	,R 515	0+	0	1	0	0.0
LILLIE	,D 514	0+	0	3	0	0.0
SCHODLER	,B 530	0+	0	1	0	0.0
WILSON	,A 430	1634	3	1	0	3.0

TEAM...ILBEL

8-MAN DIVISION

PLAYER	PLAYER NUMBER	RATING	SEASONAL			
			WINS	LOSSES	DRAWS	POINTS
BUELL	,K 195	1640	5	3	3	6.5
CHRISTOPHR	,L 461	1531*	2	4	4	4.0
DEBOTH	,J 204	1679*	2	6	2	3.0
DOWNNS	,M 576	0+	0	1	0	0.0
ESTABROOK	,R 485	0+	2	0	0	2.0
GARCIA	,R 577	0+	0	0	0	0.0
KEITH	,G 192	1664	3	8	0	3.0
LAUTH	,R 196	1493	5	3	2	6.0
LOGELIN	,W 194	1563	5	1	1	5.5
MANGUARCNA	,N 486	1194#	0	2	0	0.0
PETERS	,J 198	1329*	0	2	0	0.0
SEDLACK	,C 193	1312*	0	2	0	0.0

TEAM...ITT-4

4-MAN DIVISION

PLAYER	PLAYER NUMBER	RATING	SEASONAL				
			WINS	LOSSES	DRAWS	POINTS	
BYCOWSKI	M	56	1484♦	4	3	0	4.0
GLASS	M	549	0+	0	0	0	0.0
KDULIS	J	548	0+	1	3	0	1.0
DELRIKH	R	386	1627♦	3	3	2	4.0
PETRIK	F	459	0+	0	2	0	0.0
WEBER	S	570	0+	0	1	0	0.0
YANG	P	59	1472	5	3	0	5.0

TEAM...KNIGHT

8-MAN DIVISION

PLAYER	PLAYER NUMBER	RATING	SEASONAL				
			WINS	LOSSES	DRAWS	POINTS	
BAKER	L	226	1584	2	4	3	3.5
BARHORST	J	540	0+	1	2	0	1.0
BINGLE	J	227	1599	4	3	0	4.0
CAMAIONI		545	0+	0	1	0	0.0
CERITELLI	W	55	1590♦	1	0	1	1.5
DAS	G	82	1534♦	2	2	0	2.0
DRAGEL	G	88	1355	5	4	1	5.5
DURSTON	C	224	1758	0	2	0	0.0
JACKSON	J	218	2027	6	2	4	6.0
MAGLIC	R	586	1653	1	4	0	1.0
MIHAILOVIC	S	217	1993	7	0	4	9.0
OCKERS	S	223	1593	4	4	2	5.0
PURHDIT	A	556	0+	0	0	0	0.0
RUDZITIS	E	225	1752	2	2	1	2.5
STREETS	D	416	2091	2	1	1	2.5

TEAM...KNGIN

8-MAN DIVISION

PLAYER	PLAYER NUMBER	RATING	SEASONAL				
			WINS	LOSSES	DRAWS	POINTS	
BROZOVICH	J	47	1757	5	3	4	7.0
FAJKUS	J	25	1555	2	4	1	2.5
KUMRO	D	24	1691	4	5	1	4.5
PARKER	L	417	1998♦	6	1	4	8.0
PEHAS	A	231	1991	5	1	1	5.5
SHAFF	R	46	1543	5	7	2	6.0
STEPANEK	I	331	1738*	3	1	2	4.0
VELBEL	A	319	0+	1	2	0	1.0
WARREN	J	22	2027	2	0	6	5.0
YUKNAVECH	R	479	1526♦	7	4	1	7.5

TEAM...KNGMN

8-MAN DIVISION

PLAYER		PLAYER		SEASONAL			
		NUMBER	RATING	WINS	LOSSES	DRAWS	POINTS
BLAZIE	,J	302	1690+	5	3	2	6.0
ELLIOTT	,W	244	1738	6	2	4	8.0
FARMER	,J	54	1232+	2	1	0	2.0
FISH	,R	233	1575+	4	2	1	4.5
HARRINGER	,R	49	1482	5	3	3	6.5
LEE	,R	246	1454+	4	2	1	4.5
RICHEY	,C	245	1414+	3	4	1	3.5
SUND	,W	48	1549+	1	2	1	1.5
THOMAS	,J	29	1398	2	4	1	2.5
TURCANY	,P	574	0+	1	0	0	1.0
VONDRASEK	,G	52	0+	0	5	0	0.0
WESTON	,P	51	1325+	5	3	1	5.5

TEAM...KNGS4

4-MAN DIVISION

PLAYER		PLAYER		SEASONAL			
		NUMBER	RATING	WINS	LOSSES	DRAWS	POINTS
ANDREWS	,C	501	1583+	2	3	0	2.0
MC MANIGAL	,G	403	0+	0	2	0	0.0
STOCKWELL	,L	502	0+	0	3	1	0.5
WHOWELL	,W	296	1243+	1	4	1	1.5
ZARN	,R	297	0+	1	2	0	1.0

TEAM...MSNTD

4-MAN DIVISION

PLAYER		PLAYER		SEASONAL			
		NUMBER	RATING	WINS	LOSSES	DRAWS	POINTS
ANGELES	,R	120	1619+	3	0	0	3.0
CRUZ	,R	521	0+	0	0	1	0.5
GALLAGHER	,S	401	0+	0	1	0	0.0
LEAND	,W	552	0+	0	0	0	0.0
MADRIDEJOS	,T	550	0+	0	0	0	0.0
MENDEZ	,S	522	0+	2	0	0	2.0
PETRIE	,K	402	0+	0	3	0	0.0

PLAYER		PLAYER NUMBER	RATING	SEASONAL			
				WINS	LOSSES	DRAWS	POINTS
CDX	,R	323	1544♦	2	8	1	2.5
DRURY	,D	541	0+	1	1	0	1.0
GEHRKE	,Y	542	0+	1	1	0	1.0
GILES	,T	498	0+	1	2	0	1.0
GONCHAROFF	,N	208	1849	2	3	6	5.0
GREENSPAN	,P	210	1611	0	4	1	0.5
GRIGGEL	,R	230	1382♦	1	1	0	1.0
HENNING	,J	214	1631	4	5	1	4.5
JACOB	,C	387	1508♦	2	5	1	2.5
MAKS	,J	286	1417	1	3	0	1.0
NEUMARK	,J	209	1743	0	1	0	0.0
OGASAWARA	,R	213	1654	1	4	5	3.5
ROBINSON	,R	494	1337♦	3	5	2	4.0
SERMAS	,Y	544	0+	0	2	0	0.0
THOMPSON	,LEE	543	0+	1	1	0	1.0
VICK	,H	457	1532♦	1	3	0	1.0
ZABERZNSKI	,W	211	2152♦	0	0	1	0.5

TEAM...PAWNS

8-MAN DIVISION

PLAYER		PLAYER NUMBER	RATING	SEASONAL			
				WINS	LOSSES	DRAWS	POINTS
APPELMAN	,E	221	1674	3	3	0	3.0
FEDER	,H	84	1347	5	3	0	5.0
GREEN	,D	424	1502♦	7	4	1	7.5
JACKSON	,R	497	0+	2	1	0	2.0
KARPLUS	,H	241	1148♦	0	4	0	0.0
MCKEE	,J	90	1157♦	2	6	0	2.0
REENTS	,W	571	1265#	1	4	0	1.0
RENNER	,T	86	1524	6	3	0	6.0
SCHNEIDER	,L	584	0+	0	1	0	0.0
SHIN	,Y	394	0+	2	1	0	2.0
TOMCZUK	,Z	572	1209#	0	1	0	0.0
TURULA	,P	242	1172#	1	4	0	1.0
VELECKIS	,E	83	1502	6	3	1	6.5
WALSH	,W	81	1573	1	2	3	2.5
WICKART	,B	492	0+	0	0	0	0.0
WILSON	,R	220	1820	3	2	2	4.0

TEAM...PRCON

4-MAN DIVISION

PLAYER		PLAYER NUMBER	RATING	SEASONAL			
				WINS	LOSSES	DRAWS	POINTS
DAILIDKA	,Z	279	1682	2	2	0	2.0
DELEON	,H	308	1652#	4	2	0	4.0
DMY	,S	413	1362♦	3	3	0	3.0
GHAVIMI	,R	503	1648♦	6	3	1	6.5
KOZACKI	,J	353	1850	7	2	2	8.0
LEE	,Y	458	0+	0	1	0	0.0
NAAMI	,S	281	1400♦	0	1	0	0.0
SAIFULLAH	,M	122	1734#	5	2	0	5.0
STUHLBARG	,D	526	1562#	5	2	0	5.0

TEAM...RALND

4-MAN DIVISION

PLAYER	PLAYER NUMBER	RATING	SEASONAL			
			WINS	LOSSES	DRAWS	POINTS
KARLOVICS ,S	169	1773	12	1	1	12.5
KLING ,R	590	1235*	1	0	0	1.0
LANGE ,H	409	1143*	1	2	0	1.0
LOPEZ ,D	410	0+	0	1	0	0.0
MOYLAN ,K	172	1673*	6	5	3	7.5
ROELKE ,J	171	1277*	4	6	0	4.0
TOMLINSON ,H	170	1331*	6	5	0	6.0
WFINER ,A	560	0+	1	0	0	1.0

TEAM...ROOKS

8-MAN DIVISION

PLAYER	PLAYER NUMBER	RATING	SEASONAL			
			WINS	LOSSES	DRAWS	POINTS
BECK ,M	222	1476	1	4	3	2.5
BENEDEK ,R	216	2142	4	0	6	7.0
BERRY ,G	219	1826	8	3	2	9.0
DALEY ,J	85	1329	5	4	1	5.5
DOMANUS ,H	465	1694*	7	3	0	7.0
FROST ,B	333	1177*	0	5	1	0.5
KROHN ,V	423	1816	5	4	0	5.0
KUCERA ,D	327	1991	5	2	5	7.5
PETERSON ,M	238	1692	5	4	1	5.5
TABOAS ,A	332	1230*	2	3	0	2.0
UHERKA ,K	87	1416*	2	6	1	2.5
YOUNG ,C	589	0+	1	0	0	1.0

TEAM...RRD-A

4-MAN DIVISION

PLAYER	PLAYER NUMBER	RATING	SEASONAL			
			WINS	LOSSES	DRAWS	POINTS
BERES ,R	428	0+	2	0	1	2.5
BURK ,R	271	1425	5	3	3	6.5
CAINE ,R	270	1596	5	1	3	6.5
DOBBINS ,G	269	1689	6	5	1	6.5
ELLIS ,W	581	0+	1	0	0	1.0
HERSCHERGR ,W	480	1810*	0	1	0	0.0
SWANSON ,H	415	1657	5	1	1	5.5

TEAM...RRD-B

4-MAN DIVISION

PLAYER	PLAYER NUMBER	RATING	SEASONAL			
			WINS	LOSSES	DRAWS	POINTS
BARAN ,R	346	1315	1	4	2	2.0
CARLSON ,J	427	1521*	2	0	0	2.0
DAVIS ,B	347	1193*	0	2	1	0.5
LEBEN ,F	113	1511*	4	4	0	4.0
MORREY ,C	177	1111	0	0	0	0.0

TEAM...SARAL

4-MAN DIVISION

PLAYER	PLAYER NUMBER	RATING	SEASONAL			
			WINS	LOSSES	DRAWS	POINTS
ANDERSON	N 132	1793	2	4	5	4.5
BRAZEAR	TD 376	1265	2	5	0	2.0
CAPPELLE	E 510	1405	2	2	1	2.5
GREEN	H 504	1464*	4	2	1	4.5
HERREN	D 505	0+	0	0	0	0.0
HERZMANN	K 357	0+	0	0	0	0.0
MOGEE	G 135	1229*	4	5	0	4.0
SCHOLL	G 506	0+	1	0	0	1.0
SIVULA	B 133	1453	2	7	1	2.5
SZATMARY	F 134	1337*	2	2	0	2.0
WOODS	B 509	1377*	2	5	0	2.0
YOUNG	J 527	0+	0	0	0	0.0

TEAM...SHWMS

4-MAN DIVISION

PLAYER	PLAYER NUMBER	RATING	SEASONAL			
			WINS	LOSSES	DRAWS	POINTS
GIVINS	E 555	0+	0	0	0	0.0
MAYES	D 568	0+	0	2	1	0.5
NELLETT	H 519	1420*	1	0	0	1.0
PLAISANCE	T 268	1362*	2	3	1	2.5
POKUSA	R 365	1345*	3	2	2	4.0
SIMANTEL	L 261	1270	7	2	0	7.0
TINDER	C 260	1414	2	7	0	2.0
YAPP	B 259	1513	0	2	0	0.0

TEAM...SIGND

4-MAN DIVISION

PLAYER	PLAYER NUMBER	RATING	SEASONAL			
			WINS	LOSSES	DRAWS	POINTS
ANDERSON	K 561	0+	1	1	0	1.0
BODIE	J 379	0+	0	2	0	0.0
BROSIG	A 137	1753	4	5	3	5.5
FRANK	R 444	0+	0	1	0	0.0
HOSKINS	E 381	0+	1	3	0	1.0
HUFF	S 140	1429*	3	7	1	3.5
KLEIN	A 166	1433*	1	2	0	1.0
KLEIN	J 165	1206	1	2	0	1.0
MCDOWN	C 318	0+	0	0	0	0.0
PASTURCZAK	RJ 406	1276*	3	4	1	3.5
PEREZ	A 547	0+	0	1	0	0.0
RIBALDO	D 507	0+	0	0	0	0.0
STENSAKER	L 138	1470	3	4	5	5.5
WUTTMANN	D 592	0+	0	0	0	0.0

TEAM...SRS-A

4-MAN DIVISION

PLAYER	PLAYER NUMBER	RATING	SEASONAL			
			WINS	LOSSES	DRAWS	POINTS
CAMPBELL	,T 105	1526*	5	8	2	6.0
CIBA	,F 107	1469*	8	3	4	10.0
REYES	,R 128	2258	16	0	0	16.0
SCHWARTZ	,S 130	1704	4	6	5	6.5

TEAM...SRS-B

4-MAN DIVISION

PLAYER	PLAYER NUMBER	RATING	SEASONAL			
			WINS	LOSSES	DRAWS	POINTS
ANDRESEN	,T 131	1735	13	0	1	13.5
GOLLA	,R 488	1901	9	4	3	10.5
KUCH	,F 106	1640*	6	3	4	8.0
LATIMER	,E 129	1870	8	6	1	8.5
MORTON	,B 567	0+	1	1	0	1.0
STECK	,L 591	0+	0	1	0	0.0

TEAM...SRS-C

4-MAN DIVISION

PLAYER	PLAYER NUMBER	RATING	SEASONAL			
			WINS	LOSSES	DRAWS	POINTS
LEMS	,B 455	1527	4	3	1	4.5
PAOLINI	,A 557	0+	0	1	0	0.0
ROLEWICZ	,P 481	1626*	2	1	2	3.0
STONE	,G 274	0+	7	0	0	7.0
SUTULA	,T 273	1758*	2	4	0	2.0

TEAM...TTY

4-MAN DIVISION

PLAYER	PLAYER NUMBER	RATING	SEASONAL			
			WINS	LOSSES	DRAWS	POINTS
ALDORT	,L 155	1575	0	3	5	2.5
GILMER	,J 288	1561	6	5	2	7.0
GRUBER	,D 156	1469	2	2	1	2.5
JACOBS	,N 356	1865	1	1	0	1.0
KLEMM	,J 377	1459	2	3	0	2.0
LANTZ	,C 483	1265	0	1	0	0.0
POKORNY	,M 305	1328*	2	1	0	2.0
SLOAN	,W 310	1503*	10	5	0	10.0
TEGEL	,F 154	2009	9	1	2	10.0

TEAM...WARDS

4-MAN DIVISION

PLAYER	PLAYER NUMBER	RATING	- - - - SEASONAL - - - -			
			WINS	LOSSES	DRAWS	POINTS
BUJNOCKI ,B	188	1321♦	3	4	0	3.0
COX ,M	559	1662#	2	2	1	2.5
LIDDELL ,B	306	1794♦	5	2	3	6.5
LITAK ,R	523	0+	0	1	0	0.0
LUCAS ,K	516	0+	0	0	1	0.5
DCCOMY ,B	187	1416#	5	3	0	5.0
PORTER ,A	564	0+	2	0	1	2.5
ULICKEY ,K	186	1583♦	3	3	0	3.0

TEAM...ZNITH

4-MAN DIVISION

PLAYER	PLAYER NUMBER	RATING	- - - - SEASONAL - - - -			
			WINS	LOSSES	DRAWS	POINTS
AMARA ,I	473	0+	1	3	0	1.0
CONWAY ,F	177	1564♦	2	1	2	3.0
DASSIE ,K	178	1526♦	1	4	0	1.0
REAGAN ,D	179	0+	1	3	0	1.0
WALTHERS ,D	508	0+	1	0	0	1.0

TEAM...ZNNLS

4-MAN DIVISION

PLAYER	PLAYER NUMBER	RATING	- - - - SEASONAL - - - -			
			WINS	LOSSES	DRAWS	POINTS
AGPAWA ,T	350	1546	8	6	2	9.0
CHEN ,J	149	1544♦	10	4	1	10.5
FOGELSON ,M	148	1315	1	3	0	1.0
MILLER ,P	147	1567	4	6	3	5.5
SCHULMAN ,R	146	1774	4	6	6	7.0

Rating Chairman's Season Summary, 1975/76 - L. A. Sheridan

In the 1975/76 season, about 400 players participated in CIGL match play. Last year we had about 480 players. About 100 players received a player number for the first time.

Kumro's Giant Killers (by L.A.S.)

R. Ghavimi "slew" E. Buerger with a rating difference of 502.
J. Henning "destroyed" V. Krohn with a rating difference of 324.

Big Ten upsets require that the loser be currently listed in the Big Ten when the game was played and the rating difference must be 300 or more.

Other Upsets

W. Whowell beat L. Muir with a rating difference of 533.
L. Simantel beat R. Caine with a rating difference of 418.
B. Woods beat J. Brotsos with a rating difference of 343.

Undefeated Players (7 or more games)

<u>Junior</u>		<u>Senior</u>	
R. Reyes, Sears "A"	16/0/0	G. El Banhawy, Dragons	8/0/1
T. Andresen, Sears "B"	13/0/1	S. Mihailovich, Knights	7/0/4
A. Mengelis, EXcaliburs	8/0/1	R. Benedek, Rooks	4/0/6
C. Stone, Sears "C"	7/0/0	J. Warren, WE King's Indians	2/0/6

Top Point Getters

<u>Junior</u>		<u>Senior</u>	
R. Reyes, Sears "A"	16.0	G. Berry, Rooks	9.0
T. Andresen, Sears "B"	13.5	S. Mihailovich, Knights	9.0
S. Karlovics, Zenith-Raul.	12.5	J. Sobun, Dragons	9.0
J. Chen, Zenith-Niles	10.5	V. Stamm, Chargers	9.0
R. Golla, Sears "B"	10.5	(five others at 8.5)	
I. Rosenfeld, EXcaliburs	10.5		
(three others at 10.0)			

Most Wins

<u>Junior</u>		<u>Senior</u>	
R. Reyes, Sears "A"	16	V. Stamm, Chargers	9
T. Andresen, Sears "B"	13	G. Berry, Rooks	8
S. Karlovics, Zenith-Raul.	12	G. El Banhawy, Dragons	8
J. Chen, Zenith-Niles	10	G. Kinsella, Bishops	8
I. Rosenfeld, EXcaliburs	10	M. Swiderski, Chargers	8
W. Sloan, TTY	10		

Most Draws

	<u>Junior</u>		<u>Senior</u>
R. Schulman, Zenith-Niles	6	R. Benedek, Rooks	6
L. Aldort, TTY	5	N. Goncharoff, Motorola	6
N. Anderson, Sara Lee	5	J. Warren, King's Indians	6
T. Gaffigan, 1st Nat'l Bank	5	K. Dobr, Chargers	5
S. Schwartz, Sears "A"	5	D. Kucera, Rooks	5
L. Stensaker, Signode	5	R. Ogasawara, Motorola	5
J. Zechinati, ARC-4	5		

The following page contains a chart of the distribution of ratings in the CIGL. This was compiled in April when there were 254 players active in the 1975/76 season. The overall average rating of 254 players was 1544. The largest single grouping was 1401 to 1500 - it represented 18% of the total players considered.

The Western Electric club at Lisle attempted a 7-minute team speed chess tournament. The format was changed because of lack of participation.

7 - Minute Speed Tournament6-3-76

<u>Place</u>	<u>1</u>	<u>2</u>	<u>3</u>	<u>4</u>	<u>5</u>	<u>6</u>	<u>7</u>	<u>Total</u>
1. J. Brozovich, Indians	X	1	1	1	1	0	1	5
2. V. Stamm, Chargers	0	X	0	1	1	$\frac{1}{2}$	1	$3\frac{1}{2}$
3. C. Dobr, Chargers	0	1	X	0	0	1	1	3
4. W. Elliott, Kingsmen	0	0	1	X	1	0	1	3
5. M. Swiderski, Chargers	0	0	1	0	X	1	1	3
6. R. Shaff, Indians	1	$\frac{1}{2}$	0	1	0	X	0	$2\frac{1}{2}$
7. R. Harringer, Kingsmen	0	0	0	0	0	1	X	1

The evening was originally planned as a 4 or 5 team tournament with games similar to the regular season format. However only seven players showed, so we had a round robin and a lot of fun. Seems like many of the games played afterwards had opposite results from above. I would encourage another such match before the fall season if anyone out there will organize it.

Rick Shaff

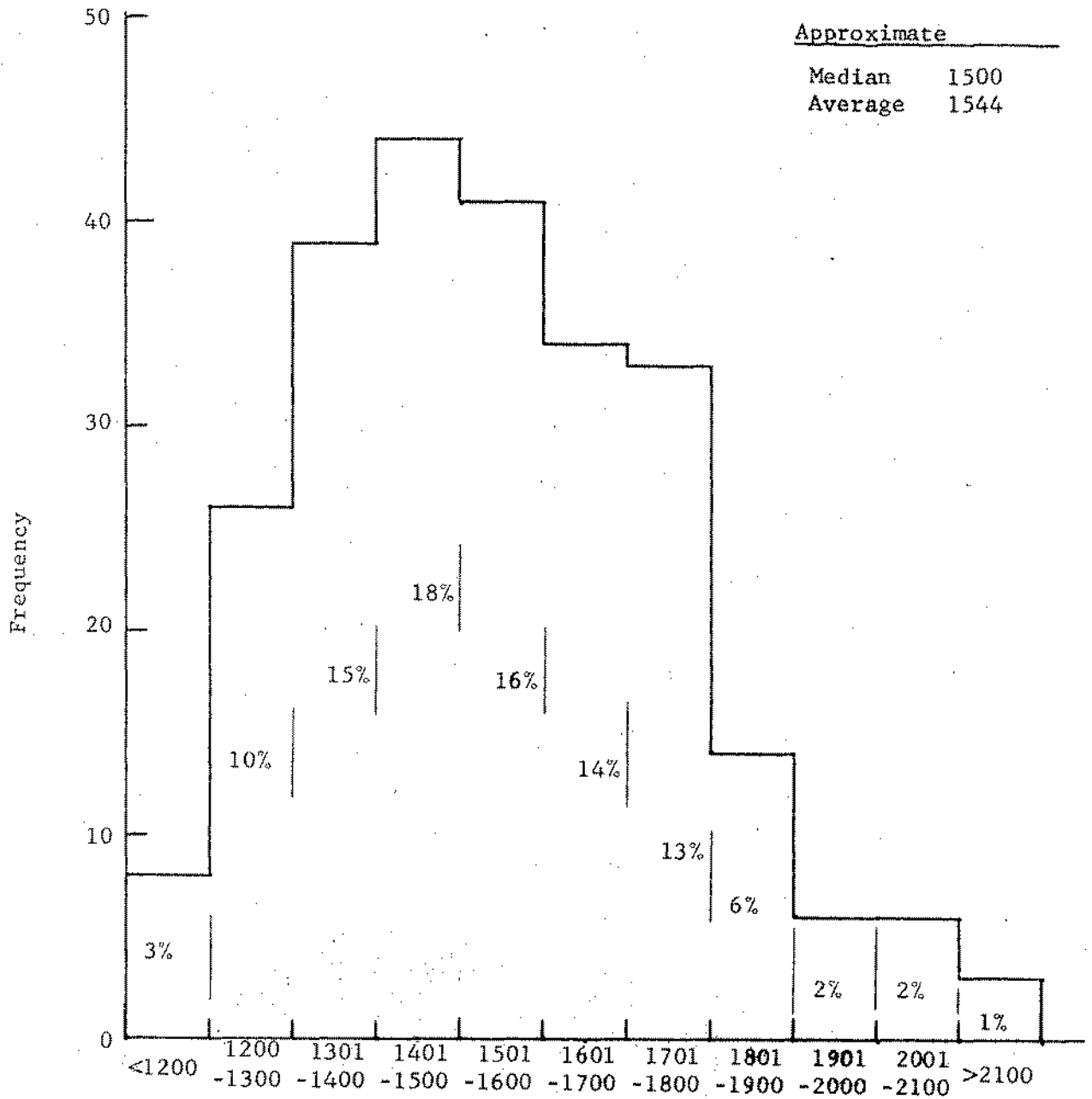
CICL Rating Summary

Total Active 254

Approximate

Median 1500

Average 1544



Active Ratings as of April 15, 1976

C I C L
Business Meeting

June 24, 1976

Meeting opened at 7:15 P.M., Amoco Research Center, Naperville.

Members present:

Lou Aldort - Teletype
Doug Anderson - Bell Labs
Ned Anderson - Sara Lee
Terry Andreson - Sears, Roebuck
David Baurac - Argonne
Greg Berry - A.N.L.
Terry Brazeal - Sara Lee
Joe Brozovich - W. E.
Michael Dee - Amoco
Nik Goncharoff - Motorola
Phil Yang - I.T.T.
Duane Satterlee - International Harvester
Rick Shaff - W. E.
John Sloan - Fermi Labs
Walt Sloan - Teletype
Ron Walker - Fermi Labs
Charlie Ward - Argonne
Paul Weston - W. E.
Gary Wolcott - Formerly of A.B. Dick Co.
Larry Young - Illinois Bell
Dick Zielinski - A.B. Dick

Following the introduction of the members in attendance, it was announced that there would be no treasurers report at this time as Gary Benson was away on vacation.

A motion was made and carried, to accept the minutes of the Spring business meeting as published in league bulletin No. 8, Vol. XIX.

Discussion was held regarding proposed amendment; C I C L "Policies & Rules"; vested rights proposal I.C.2. A motion was made and carried to change the wording of the amendment to: "_____ must be a former employee retired or laid off by that company after a minimum of 5 years service."

The membership then entered into the very serious subject of; restructuring the league into all 6-person teams thus abolishing the present and long prevailing system of 8-person (senior) and 4-person (junior) divisions.

The discussion opened with Paul Weston presenting his survey of the league members in regards to the above subject. The results of the survey were based primarily on these questions:

1. How many years has your company been in the C I C L?
2. How many members of your chess organization were active in C I C L competition in the 1975-76 season?

3. Would you support the CIGL if the league adopted a system of all 6-person teams?

The answers to these questions were highly favorable toward the new concept with only a couple of member teams responding negatively.

Paul added that the new universal structure would eliminate the "separation" existing in the league due to the present 2 division structure. He then presented a map of team locations and pointed out that the separation is also geographical with most of the senior division isolated in one area (west suburban) of the total CIGL geographical picture. Someone commented that without Argonne and the Bell System, there wouldn't be a senior division. Paul added that the 6-person structure would give the league more stability, as turnover in the junior division is quite high. If companies "had to work harder" to get enough players to enter a 6-person team, they would be less likely to drop out. The playoffs under the proposed system would be centralized. Finally, the total number of teams in the league would remain about the same after anticipated 4-person teams withdraw. Nik Goncharoff stated that while he was against the re-structure idea when it was first presented, he now agrees with the concept but has reservations about adopting the system without a trial period. He then made a motion that the 6-person team structure be tried for one year as a test and adopt or drop the system dependent on its success or failure. Before voting on the motion a general discussion of the plan was held with the biggest concern being how many junior division teams would be lost when it came time to make the decision to join and what are the dangers of raising the threshold of the junior division teams from 4 to 6 players. Lou Aldort asks if, the rich get richer and the poor get poorer; 8-person teams drop 2 weaker players, 4-person teams must add 2 weaker players. On the positive side it was emphasized that the new system would give unity to the league, something non-existent in the past and very importantly, increase the stability of CIGL which in the past was the burden of the senior division due to the high turnover in the 4-person division. Greg Berry, speaking for Jim Brotzos, explains that the position of captain for Alumni teams would become more difficult due to having to contact more persons in numerous locations. Greg then emphasized the importance of league stability and how the new system would provide that. He then suggested voting on Nik Goncharoff's motion.

At this point a number of proxies were presented and immediately the question arose as to whether proxies constituted voting power. Following a brief discussion a vote was taken and while minor confusion prevented tabulating the actual count, the decision was clearly in favor of acceptance of proxy votes.

A vote followed to amend the motion for the universal 6-person team league structure. The tally was in favor of the proposed set-up by 19 - 11. This was followed by a vote to adopt the proposal for the 1976-77 season. The vote was affirmative by a clear 24-1 count, so; present and future members, welcome to your 6-person team in the CIGL!

The next question was that of individual team dues. The motion was made to require \$18.00/Team entry fee.* Motion was carried unanimously by a 20-0 vote.

The divisional structure of the league was not determined at this time. Responsible parties would have to work out this matter as this monumental change certainly requires a good deal of analysis as to division and sectional alignment not to mention what teams will join in this alignment. Speaking of that issue, applications for new teams entrance into the league was accepted. The following new companies or new team additions from existing member companies were accepted unanimously to the CICL:

Fermi Labs
International Harvester
ANL Monarchs
Illinois Bell

In addition, the Kitchens of Sara Lee requested and received permission to utilize Bill Vicks, an outside contractor but employed at said company for 14 years, on the Sara Lee Chess Team.

In regards to team alignment, Lou Aldort points out that due to the strength of the present or future Alumni Teams, thus their affect on the final standings, consideration ought to be given to Alumnis' competitors records as applied to the playoffs, especially where a "wild card" concept is employed.

Appointment of committee chairmen. The following are the appointees to those positions necessary for the successful functioning of the league.

1. Publicity - Paul Weston
2. Industrial Tornado - Steve Decman
3. Banquet - Jim Gehrke, Lee Thompson (speed tourney)
4. Telephone match with CCLNY - Open
5. Awards - Open
6. Nominations of Officers - Joe Brozovich, Nik Goncharoff, Larry Young.
7. Entertainment - None
8. Speed Chess Tournament - None
9. Special League Matches - None
10. Rating Chairman - Terry Andreson

New Business:

Terry Andreson made a motion to eliminate highest rated player trophy. Vote carried unanimously. He then made a motion to - - - set up a committee to study awarding a most valuable player award or trophy (to a player, or players who displayed outstanding talent in league competition such as; most points on a given "board"). Motion carried unanimously. Committee appointed to work out this matter were: Ned Anderson, Terry Andreson, Greg Berry, Fred Ciba and Rick Shaff.

Charlie Ward then took the floor to present the modifications and amendments to, RULES OF TEAM COMPETITION. These proposals were given to all in session with the intent that all league players be acquainted with the contents and respond if any questions arose.

The final business was the discussion on the list of proposals presented by Jim Brotsos at the CIGL Spring 1976 Business meeting. These issues, at least for the present time, were tabled with the exception of the proposal for a "Commemorative Tournament"; that we name our annual CIGL tournament in honor of a past officer, founder, etc. A motion was made and passed to adopt this proposal.

Before closing this meeting, Lou Aldort recommends another meeting prior to the start of the next season. This would be to discuss team alignment, schedules, etc. The location of said meeting would be determined by League President, Greg Berry.

The meeting was adjourned at 9:51 P.M.

Gary B. Wolcott
Gary B. Wolcott
Secretary, CIGL

President's Report

At our June business meeting the league overwhelmingly adopted the 6-man team concept for next season. There will be another business meeting on August 19th at Amoco Research Center in Naperville. The meeting will start at 7:00pm. The major item on the agenda will be discussion of the league structure for the trial season.

I have prepared two different structures to be considered at the meeting. Anyone preferring an alternate structure should be prepared to make a proposal at the business meeting.

Structure I (4 Divisions)

North - 10

EXcaliburs
T.T.Y.
Procon
Signode
Sara Lee
Zenith-Niles
A.B. Dick
I.T.T.
Zenith-Rauland
Motorola

East - 9

Sears - 3
1st National Bank
Montgomery Wards
Harris Trust
G.A.T.X.
I.B.T.-2

South - 8

R.R.D. - 2
Continental Can
C.P.C.
Sherwin Williams
W.E.-Hawthorne
Int'l Harvester
Argonne - 1

West - 12

Argonne - 4
B.T.L. - 2
Western Electric - 2
Amoco - 2
Fermi Labs
College of DuPage

Structure II (5 Divisions)

North - 8

EXcaliburs
T.T.Y.
Procon
Signode
Sara Lee
Zenith-Niles
I.T.T.

South - 6

R.R.D. - 2
Continental Can
C.P.C.
Sherwin Williams
W.E.-Hawthorne

Near West - 8

Argonne - 3
Western Electric - 2
Int'l Harvester
Zenith-Rauland
College of DuPage

Far West - 8

Argonne - 2
B.T.L. - 2
Amoco - 2
Fermi Labs
Motorola

East - 9 (Same as in Structure I)

A method of qualifying teams will be a problem in either structure. In Structure I, the number of teams in each division is unequal so it would not be fair to allow 2 teams from each division to make the playoffs. In Structure II, there is an obvious problem if it is desired to have 8 teams in the playoffs (for a 3 round Swiss playoff). We should also discuss a method of qualifying teams for the playoffs. I favor a method which would allow the 1st place team from each division to make the playoffs, the remainder of the teams should be determined by a wild card procedure. I also believe that the top 2 teams in each division should receive trophies, independent of whether the second place team qualifies for the playoffs.

The playing schedule associated with each structure: for example, in Structure I, the West division could play a single Round Robin or, in Structure II, the South section could play a double Round Robin.

There will be a vote on the revised Rules of Team Competition. These rules can be found in attachment A at the end of this bulletin.

I would like to solicit help from the chess playing community as a number of important committee chairmen are still needed. Hopefully, someone from the East division can volunteer for this important job. We only have three division chairmen. With 4 or 5 divisions we will need 1 or 2 more division chairmen to fill the void. Volunteers should call me, Gre Berry at 739-7711, ext. 5056.

senior division report...by rick shaft

Congratulations are due to the trophy winners, the Dragons, Chargers, Rooks, and Kingsmen. They received their awards at the banquet, along with 4-man division. Slavko Mihailovic of the Knights and Vern Stamm of the Chargers, each with a nine point season for their teams, received a 'Most Valuable Player' certificate. Congratulations also to Gamal El Banhawy for most improved player.

senior division standings

<u>Final</u> <u>Team</u>	<u>Match</u> <u>Points</u>	<u>Section "A"</u>			<u>Game</u> <u>Points</u>
		<u>Won</u>	<u>Lost</u>	<u>Draw</u>	
BTL Dragons	11	11	0	0	61
ANL Rooks	7	6	3	2	48½
WE King's Indians	4½	4	6	1	45
Ill Bell Tel	4½	4	7	0	43½
ANL Knights	4	4	7	0	43½
Motorola	2	2	9	0	30½

Dragons vs. Rooks: BRENDA defeats Peterson , adj. game result.

Section "B"

<u>Team</u>	<u>Match</u> <u>Points</u>	<u>Won</u>	<u>Lost</u>	<u>Draw</u>	<u>Game</u> <u>Points</u>
WE Chargers	9½	9	1	1	55½
WE Kingsmen	7½	7	3	1	51
ANL Bishops	7	6	3	2	51
ANL Pawns	4	3	6	2	42½
AMOCO	3	2	7	2	29½
BTL Chessnuts	2	1	8	2	34½

junior division report... by terry andresen

The following is an extra board match that had not been reported:

M. Volpe 1 - S. Edwards 0

This year's Junior Division playoffs consisted of 10 teams playing in a 3 - round swiss tournament. Sears demonstrated its chess prowess by not only finishing 1-2 in the Junior Division, but the Sears "B" team finished 3-0 by winning 11 of their 12 playoff games.

Pre-Playoff Standings

	Section	W	L	Pct.
1. R.R.D. "A"	South	9½	½	.950
2. Sears "B"	Loop "A"	10	1	.909
3. Zenith-Rauland	West	7½	1½	.837
4. Sears "C"	Loop "B"	5	2	.713
5. Sears "A"	Loop "A"	7	4	.636
6. Teletype	North	7½	4½	.625
7. Continental Can	South	6	4	.600
8. Procon	North	7	5	.583
9. Zenith-Niles	North	7	5	.583
10. Amoco	West	5	4	.555

Round 1

Board 1		Board 2	
R.R.D. "A" 1½	Teletype 2½	Continental Can 0	Sears "B" 4
G. Dobbins 0	F. Tegel 1	R. Fabijonas 0	R. Golla 1
W. Herschberger 0	J. Gilmer 1	R. Hernandez 0	E. Latimer 1
H. Swanson ½	L. Aldort ½	R. Dargis 0	T. Andresen 1
R. Caine 1	W. Sloan 0	W. Gailus 0	F. Kuch 1
R. Burk 0	R. Titus 1		

Board 3		Board 4	
Zenith-Rauland 2	Procon 2	Zenith-Niles 2½	Sears "C" 1½
S. Karlovics 1	R. Ghavimi 0	R. Schulman 1	A. Paolini 0
K. Moylan 0	J. Kozacky 1	P. Miller ½	P. Rolewicz ½
H. Tomlinson 0	A. Stys 1	T. Agpawa 1	G. Stone 0
J. Roelke 1	L. Tumalad 0	J. Chen 0	T. Sutula 1
R. Kling 1	S. Dmy 0		

Round 2

Board 5		Board 1	
Sears "A" 2	Amoco 2	Sears "B" 3	Teletype 1
R. Reyes 1	R. Keske 0	R. Golla 0	F. Tegel 1
S. Schwartz ¼	L. Muir ¼	E. Latimer 1	N. Jacobs 0
T. Campbell ½	J. Zechinati ½	T. Andresen 1	L. Aldort 0
F. Ciba 0	N. Paaue 1	F. Kuch 1	J. Gilmer 0
		B. Morton 0	W. Sloan 1
		L. Steck 0	R. Titus 1

Board 2		Board 3	
Zenith-Niles 1	Zenith-Rauland 3	Procon 1½	Sears "A" 2½
R. Schulman 0	S. Karlovics 1	A. Stys 0	R. Reyes 1
P. Miller 0	K. Moylan 1	J. Kozacky ½	S. Schwartz ½
T. Agpawa 0	H. Tomlinson 1	Z. Daitaba 0	

Board 4				Board 5			
Amoco	1	R.R.D. "A"	3	Sears "C"	3	Continental Can	1
R. Keske	0	G. Dobbins	1	B. Lems	0	R. Fabijonas	1
L. Muir	0	H. Swanson	1	P. Rolewicz	1	W. Gailus	0
J. Zechinati	$\frac{1}{2}$	R. Caine	$\frac{1}{2}$	G. Stone	1F	- - -	OF
N. Paauwe	$\frac{1}{2}$	R. Burk	$\frac{1}{2}$	T. Sutula	1F	- - -	OF

Round 3

Board 1				Board 2			
Sears "B"	4	Zenith-Rauland	0	Sears "A"	2 $\frac{1}{2}$	R.R.D. "A"	1 $\frac{1}{2}$
R. Golla	1	S. Karlovics	0	R. Reyes	1	G. Dobbins	0
E. Latimer	1	K. Moylan	0	S. Schwartz	$\frac{1}{2}$	R. Caine	$\frac{1}{2}$
T. Andresen	1	H. Tomlinson	0	T. Campbell	0	R. Burk	1
F. Kuch	1	J. Roelke	0	F. Giba	1	C. Williams	0

Board 3				Board 4			
Teletype	4	Sears "C"	0	Procon	1	Zenith-Niles	3
F. Tegel	1	B. Lems	0	N. Deleon	0	R. Schulman	1
N. Jacobs	1	P. Rolewicz	0	L. Tumalad	0	P. Miller	1
J. Gilmer	1	G. Stone	0	D. Stuhlberg	1	T. Agpawa	0
W. Sloan	1	T. Sutula	0	M. Saiffulah	0	J. Chen	1

Board 5			
Amoco	4F	Continental Can	OF

Final Standings

Place	Team	Section	W	L
1	Sears "B"	Loop "A"	3	0
2	Sears "A"	Loop "A"	2 $\frac{1}{2}$	$\frac{1}{2}$
3	Teletype	North	2	1
4	Zenith-Niles	North	2	1
5	Zenith-Rauland	West	1 $\frac{1}{2}$	1 $\frac{1}{2}$
6	Amoco	West	1 $\frac{1}{2}$	1 $\frac{1}{2}$
7	R.R.D. "A"	South	1	2
8	Sears "C"	Loop "B"	1	2
9	Procon	North	$\frac{1}{2}$	2 $\frac{1}{2}$
10	Continental Can	South	0	3

The following game was played on Board 1 in the championship match between Zenith-Rauland and Sears "B".

S. Karlovics (White) vs. R. Golla (Black)
Zenith-Rauland Sears "B"

White	Black				
1. P-K4	P-KN3	10. P-KR4	N-R4	19. KR-K1ch	K-B2
2. P-Q4	B-N2	11. 0-0-0	NxBch	20. B-B4	Q-Q2
3. N-QB3	P-Q3	12. BPxN	B-Q2	21. B-N3	B-R3
4. B-K3	N-KB3	13. P-K5	N-Q4	22. Q-KB2	P-N5
5. P-B3	N-B3	14. NxN	PxN	23. N-K2	P-R5
6. B-QB4	P-K3	15. PxP	PxP	24. PxP	RxP
7. Kn-K2	P-QR3	16. K-N1	P-QR4	25. P-N2	O-R1ch

miscellaneous

Sharko Shindig - June 11, 1976
CICL Awards Banquet

Seventy-four chess enthusiasts including guests turned out for the awards banquet, some of which are shown in this bulletin. After all the beef, chicken and mostaccioli was devoured that was topped off by an Elmer's Sundae for dessert and the awards presentation got underway.

Some companies walked off with more than one trophy. In the 4-man division Sears was more than impressive. The Sears "B" team won the playoffs going undefeated in 3 play-off rounds and taking the championship. The runner-up spot went to the Sears "A" team who finished in 2nd place.

In the Senior Division Section "A" the BTL Dragons vanquished all corners and finished with a perfect 11-0 record, going undefeated and untied, quite an accomplishment in the strong "A" Section. The second spot went to the ANL Rooks who managed to have trouble only with the Dragons.



In the "B" Section of the Senior Division Western Electric gobbled up 1st and 2nd spots with the WE Chargers taking the championship and the Kingsmen grabbing 2nd place.

In the Warren Awards, G. El Banhaway of the BTL Dragons was awarded the Most Improved Player Award with a beginning rating of 1476 and finishing with 1703, a gain of 227 points. Highest Seasonal Average went to R. Benedek of Argonne in the 8-man and R. Reyes of Sears in the 4-man.

Vern Stamm of Western Electric won the Most Valuable Player Award in the 8-man division.

Two players were entered into the Century Club, they were E. Rudzitis of ANL and R. Ogasawara of Motorola.

39 chess-nuts went at it in the speed chess and \$75.00 was distributed in prize money with 27 players getting some kind of prize. This was the only entertainment of the evening so I guess our female guests had to resort to a gab-fest and provide

their own entertainment as 18 women attended the banquet. However, all things considered, I think a good time was held by all. Following are the Speed Chess Results.

Dan Kumro
Banquet Chairman 1976

Speed Chess Results

Strongest Section - 1

	Score	Prize
R. Reyes, Sears "A"	6 -0	\$5.00
J. Warren, WE Indians	3½-2½	4.00
R. Golla, Sears "B"	3 -3	2.50
A. Stys, Procon	3 -3	2.50
E. Latimer, Sears "B"	2 -4	.50
F. Tegel, Teletype	2 -4	.50

Very Strong Section -2

R. Schulman, Zenith-"iles	7 -0	5.00
G. Berry, ANL Rooks	5 -2	3.50
N. Goncharoff, Motorola	5 -2	3.50
S. Karlovics, Zenith-Raulands	4 -3	2.00
E. Gastelu, 1st Nat'l Bank	3 -4	1.00



Strong Section - 3

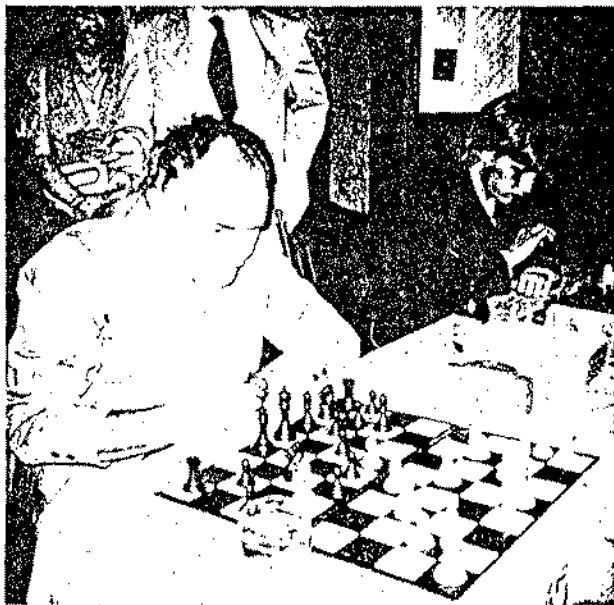
	Score	Prize
G. Dobbins, R.R.D. "A"	7 -0	\$5.00
K. Moylan, Zenith-Raul:	5 -2	3.50
J. Sobun, BTL Dragons	5 -2	3.50
J. Brotsos, EXcaliburs	3 -4	1.00
R. Ghavimi, Procon	3 -4	1.00
S. Schwartz, Sears "B"	3 -4	1.00

Really Good Section - 4

H. Warren, Guest	5 -2	4.00
W. Sloan, Teletype	5 -2	4.00
V. Stamm, WE Chargers	5 -1	4.00
J. Gilmer, Teletype	4 -3	2.00
G. Mergili, C.T.&P.	3½-3½	1.00

Just Good Section - 5

R. Burk, R.R.D. "B"	6 -1	5.00
H. Lang, Zenith-Raul.	5 -2	4.00
M. Swiderski, WE Charg.	4½-2½	3.00
J. Roelke, Zenith-Raul.	4 -3	1.50
L. Thompson, Motorola	4 -3	1.50



members' games

Greg Berry vs. Computer
(Program written by Richard Greenblot of MIT)

Time: Berry, 4min. apprx.

Computer, 25min. apprx. on time sharing

White

1. P-K4
2. N-KB3
3. P-Q4
4. B-Q3
5. NxP
6. O-O
7. P-KB4
8. BxN
9. P-Q5
10. K-R1
11. P-QN4
12. B-N2
13. PxN

Black

1. P-K4
2. N-KB3
3. NxP
4. P-Q4
5. B-K3
6. N-Q2
7. P-KB4
8. QPxB
9. B-B4ch
10. B-B2
11. BxP
12. NxN
13. QxP

14. P-K6

15. BxP

16. Q-Q4

17. Q-N2

18. Q-K5ch

19. R-Q1ch

20. P-N3

21. Q-K7

22. R-Q6

23. N-Q2

24. R-QN1

25. R-Q8ch

26. QxPmate

QxKP

R-KN1

P-B4

Q-KN3

K-Q2

K-B1

RxB

B-R4

Q-R4

RxNP

B-QN3

BxR



II. RULES OF TEAM COMPETITION

A. Team Schedule

The member teams will normally play a Round Robin schedule each season. The general concept will be determined at a pre-season business meeting and the particular schedule will be prepared and distributed by the Division Chairman at least 10 days before the schedule goes into effect. The Team Captains will be responsible for arranging a mutually agreeable date and starting time within the period allowed for the given round. The home Team Captain will normally be responsible for taking the initiative in arranging match dates. Match dates cannot be cancelled unilaterally within one week of the established date.

If Team Captains cannot agree on a match date by the last week of the time period for the round in which they are scheduled to play, they should each submit their first three choices of an evening during the following week to the Division Chairman. He should then use these choices and other pertinent facts to select a date most equitable to both teams.

B. Starting Time

In general, all boards should begin play at the same time. Any variations from this should be clearly understood and agreed to by both Team Captains prior to the match time. A standard grace period of 15 minutes beyond the agreed starting time will be allowed for late-comers.

C. Forfeit Losses

Normally, forfeit losses for absenteeism will occur from the bottom board upwards. If both teams have player deficiencies at the end of the grace period, double forfeits will be recorded.

Alternately, at the option of the Team Captain, at the end of the grace period the clock of the player with the white pieces may be started at boards with one or more absent players. If any such absent player fails to arrive and make a move within one hour on his clock, his game will be forfeited. If both players are absent after one hour has elapsed, the game will be forfeited.

A team's privilege of starting games in the absence of a player (by starting his clock) will be withdrawn for the remainder of the season if two occurrences of such forfeits are reported. In this case, at the end of the grace period and if requested by the opposing team captain, the remaining players will shift board assignments upward, with forfeit losses recorded for the bottom board(s), and play will then begin. Players on board positions above the absentee's may begin play prior to the end of the grace period, if they so desire. It will be the Team Captains' responsibility to note starting time forfeits on the match results sheet so that the Division Chairman can determine and publicize when this privilege has been abused and withdrawn.

A player who discontinues his game with no game conclusion and no provision for adjournment or adjudication will lose his game by forfeit.

D. Team Captains' Responsibilities at Matches

1. Player Ranking

Team Captains will be responsible for making an honest effort to rank their players according to their current relative playing strength for each match. Each Captain will provide the other with a written lineup for each match, prepared in advance. The home team's written lineup shall be prepared on the match results sheet.

2. Refereeing

In general, the Captains should act as referees through which complaints or questions should be cleared. They are to jointly resolve disputes in accordance with the CIGL rules. If the two captains cannot agree on the facts of a dispute or on the correct interpretation of the rules, the host Captain's opinion will be given precedence at the time, but the visiting Captain may bring the matter to the Division Chairman for resolution within one week of the date of the match. The visiting captain should notify his counterpart that the game is being played under protest, and so indicate on the match results sheet. If a dispute concerns a game position, the position and all other relevant facts should be recorded.

3. Attendance

Captains are expected to make every effort to maximize participation in team events by encouraging club members to play "extra board" games. Although these games will not affect the team score, they should help maintain interest of less proficient players and help them to achieve numerical ratings. The Team Captains should select a match date that will optimize participation.

4. Publicity

Captains are expected to encourage submission of interesting games or news of their team members to the Chairman for publication.

5. Player Conduct

The Team Captains are expected to encourage good sportsmanship and proper chess etiquette among their team members. They are responsible for their team members observing the CIGL rules and the Laws of Chess.

6. Host Team Captain's Role

The host Team Captain will be responsible for providing a suitable place to play chess, furnishing chess equipment (standard size Staunton pattern chessmen are preferred), score sheets, match results sheets, and chess clocks, if available. He must also have available for consultation an up-to-date copy of the CIGL rules. He is responsible for submitting a legible results sheet signed by both team captains or their representatives to the Division Chairman within one week of the match date. He must also provide a copy of the results sheet to the visiting team captain.

7. Alternate Team Captain.

Whenever a Team Captain is absent or departs early from a match he should designate a qualified alternate to act in his place. Both teams, home and visiting, should be informed of this delegation of responsibility.

8. Match Strategy

A team member may consult his Team Captain at any time concerning the advisability of offering or accepting a draw, or of adjourning the game. The Team Captain in his response may observe the position on the board but may not discuss the position or the strategy of the game with the player. The Captain may at any time remind a player of his right to adjourn, and may inform the player of the current match status.

E. Trophies

The League will award suitable trophies to at least the first and second place teams of each division.

F. Scoring

1. Game Scoring

If more than one game is played between opposing players, the first game will count in determining the match score. A point will be awarded for each win and a half point for draws. Losses will be assigned a zero score.

2. Match Scoring

The team compiling the largest game point score, including forfeits, will receive one match point, regardless of the game points won. In the event of equal game point scores, each team will receive one-half match point.

Team standings will be determined by team match points.

Teams not completing their schedule will retain the match points they have earned but all remaining matches will be treated as team forfeitures.

3.. Tie-Breaking

In case of team ties in the final standings involving trophies, all such tied teams will compete in play-off matches, the method of play-off to be decided by the Division Chairman.

4. Play-Offs

In the case of sectional competition, the Division Chairman will determine and publish (early in the season) the play-off method of determining trophy-winning teams.

G. Colors

The team designated in the playing schedules as the visiting team will play the white pieces on odd numbered boards.

H. Rules

The Laws of Chess of the World Chess Federation (FIDE), which are also the official rules of the U.S. Chess Federation, will govern all matches, with the exceptions noted below:

- (a) FIDE Interpretations of Article 6.1 are deleted, and are replaced by the following:

In castling, a player must move his King first. If instead the Rook is moved (or even touched) first, the player must make a Rook move and may not castle on that move.

- (b) Article 13, concerning the recording of games is to be supplemented by the following:

Wins by time forfeit and draws by repetition of moves or as provided by Article 12.4 can only be claimed by providing a valid score sheet.

- (c) Article 15, concerning the adjournment of games, is superceded by Section II.J. of the present rules.

- (d) FIDE Interpretations of Article 16.1 are deleted.

- (e) Article 21, concerning the interpretation of the laws and standards for chess equipment, is deleted.

In the interpretation of the Laws of Chess, the two Team Captains jointly, as described in Section II.D.2, will ex-

I. Clock Games

1. Standard Clock Games.

Players, or their respective team captains, who wish to play clock-controlled games must so state before the match begins. The opponent is then obliged to play using a clock, provided that one is available. The opponents may mutually agree on any rate of play, not slower than 45 moves in the first two hours and 24 moves per hour thereafter. Unless they agree on a faster pace these time limits will prevail. The player who fails to make the allotted number of moves within the time limit loses immediately providing his opponent claims the time forfeiture and can submit a complete record of the game.

2. Partial Clock Games.

If, during the first hour of play of a non-clock-controlled game it becomes apparent to a player that his opponent is playing at an excessively slow rate, he can require that a clock (if available) be brought to the board and a time control of at least 24 moves per hour instituted for the remainder of the game.

J. Adjournments

Arrangements for adjournments may be by mutual agreement of individual opponents. After $3\frac{1}{2}$ hours of play, however, either player may demand an adjournment without prior arrangement, except in clock games when an adjournment cannot occur until all the moves required by the first time control have been completed. The player wishing to adjourn must, when it is his turn to move, write his move in unambiguous notation on his score sheet, put this score sheet and that of his opponent in an envelope, seal the envelope, and then stop the clocks. If the player makes the said move on the chess board, he must seal this same move on his score sheet. The player must also:

1. On the outside of the sealed move envelope record the position immediately preceding the sealed move and the time used by each player.

2. Sign and obtain the signature of his opponent on the sealed move envelope.
3. Give the sealed move envelope to the opponent's team captain or his representative, who will not open the envelope or reveal the move until the game is resumed.

Unless both players agree to a result (win, loss, or draw), an adjourned game must be resumed, and the game completed, within ten days of the date of the team match. For the resumption of an adjourned game, the player who requested the adjournment and made the sealed move has the obligation to travel to his opponent's home playing location. Any other location is satisfactory if mutually agreeable. Refusal to resume an adjourned game will result in a forfeit loss. Subsequent adjournments of a resumed game may be made only after $3\frac{1}{2}$ hours of play, unless mutually agreed to. Upon resumption of non-clock games, either player may require further play to be under clock control, with a time limit no slower than 24 moves per hour.

If unusual circumstances, such as extended illness, prevent the game from being resumed within ten days, the Division Chairman may, at his discretion, order an adjudication of the adjourned position by a chess expert. Any fee for this service will be shared equally by the teams of the two opponents.