

Chicago Industrial Chess League

BULLETIN

VOLUME 21 NUMBER 4

Browne still US champ

International grandmaster Walter Browne of Berkeley is still the United States chess champion. Browne has won the last three U.S. championships in 1974, 1975 and 1977. No championship was held last year.

This time around, Browne won six, drew six and lost only one to finish 9-4 at the 25th Invitational U.S. Championship Tournament held in Mentor, Ohio in October. The tournament was a 14-man round robin.

Browne got off to a quick lead, scoring $4\frac{1}{2}$ points in his first five games. In the first two rounds, he defeated former U.S. champions Robert

Byrne of Scarborough, N.Y., and John Grefe of Myrtle Point, Ore.

Browne's only loss came in the sixth round at the hands of James Tarjan of Berkeley, Calif. Browne was

(Continued on page 12.)

IN THIS ISSUE

| | |
|----------------------------|--------|
| Division reports | 3 |
| Ratings | 8 |
| Chess news | 11 |
| Grandmaster classics | 15 |
| Tournaments | 19 |
| Games of interest | 18, 20 |

Standings

| <u>NORTH DIVISION</u> | <u>W</u> | <u>L</u> | <u>D</u> | <u>Pts.</u> |
|-----------------------|----------|----------|----------|-----------------|
| Motorola | 3 | 0 | 0 | $13\frac{1}{2}$ |
| EXcaliburs | 2 | 0 | 0 | $9\frac{1}{2}$ |
| Zenith-Glenview | 2 | 0 | 0 | 7 |
| Signode | 2 | 1 | 0 | $11\frac{1}{2}$ |
| Sara Lee | 1 | 1 | 0 | 6 |
| ITT #1 | 1 | 1 | 0 | $5\frac{1}{2}$ |
| Procon | 1 | 1 | 0 | $3\frac{1}{2}$ |
| Teletype | 1 | 2 | 0 | 10 |
| ITT #2 | 0 | 2 | 0 | 0 |
| Kemper Insurance | 0 | 3 | 0 | $7\frac{1}{2}$ |

| <u>FAR WEST DIVISION</u> | <u>W</u> | <u>L</u> | <u>D</u> | <u>Pts.</u> |
|--------------------------|----------|----------|----------|-----------------|
| BTL Dragons | 3 | 0 | 0 | $14\frac{1}{2}$ |
| WE Kingsmen | 3 | 0 | 0 | $10\frac{1}{2}$ |
| Argonne Pawns | 2 | 1 | 0 | 12 |
| Argonne Rooks | 1 | 1 | 1 | 10 |
| Wheaton Crusaders | 0 | 1 | 2 | $8\frac{1}{2}$ |
| Argonne Bishops | 1 | 2 | 0 | $4\frac{1}{2}$ |
| WE Montgomery | 0 | 2 | 1 | 8 |
| Aroco | 0 | 3 | 0 | 4 |

| <u>NEAR WEST DIVISION</u> | <u>W</u> | <u>L</u> | <u>D</u> | <u>Pts.</u> |
|---------------------------|----------|----------|----------|----------------|
| WE Chargers | 3 | 0 | 0 | 15 |
| BTL Royals | 2 | 1 | 0 | 12 |
| WesCom | 2 | 1 | 0 | 10 |
| Argonne Knights | 2 | 1 | 0 | 9 |
| CPC International | 1 | 2 | 0 | 9 |
| Argonne Monarchs | 1 | 2 | 0 | $7\frac{1}{2}$ |
| Zenith-Rauland | 1 | 2 | 0 | 7 |
| Int'l Harvester | 0 | 3 | 0 | $2\frac{1}{2}$ |

| <u>EAST DIVISION</u> | <u>W</u> | <u>L</u> | <u>D</u> | <u>Pts.</u> |
|----------------------|----------|----------|----------|----------------|
| Alumni Central | 3 | 0 | 0 | 12 |
| RR Donnelley | 2 | 1 | 0 | 14 |
| IBT A | 1 | 0 | 2 | 12 |
| FNB | 1 | 0 | 1 | 9 |
| Sears #1 | 1 | 0 | 1 | 7 |
| Harza | 1 | 1 | 0 | $8\frac{1}{2}$ |
| IBT B | 1 | 1 | 0 | 3 |
| GATX | 0 | 1 | 0 | 0 |
| Sears Challengers | 0 | 2 | 0 | $3\frac{1}{2}$ |
| Harris Trust | 0 | 2 | 0 | 2 |

CICL directory

PRESIDENT

Greg Berry 739-7711 x5056
Bldg. 335
Argonne National Laboratory
9700 S. Cass Avenue
Argonne, IL 60439

SECRETARY

Charles Ward 739-7711 x3181
Bldg. 362
Argonne National Laboratory
9700 S. Cass Avenue
Argonne, IL 60439

TREASURER

Doug Anderson 690-3275
Room IH 2G417
Bell Telephone Laboratories
Warrenville and Naperville Rds.
Naperville, IL 60540

RATING CHAIRMAN

Terry Andresen 875-7768
Sears, Roebuck and Co.
Dept. 704-4, 52-11
Sears Tower
Chicago, IL 60684

USCF MEMBERSHIP

Charles Ward 739-7711 x3181
Bldg. 362
Argonne National Laboratory
9700 S. Cass Avenue
Argonne, IL 60439

BULLETIN EDITOR

Dave Baurac 739-7711 x5220
7517 Country Lane South
Darien, IL 60559

EAST DIV. CHAIRMAN

Tom Gaffigan 732-3988
16th Floor
#1 First National Bank
Chicago, IL 60670

NORTH DIV. CHAIRMAN

Lee Stensaker 724-6100 x2412
Signode Corp.
3650 W. Lake Avenue
Glenview, IL 60025

NEAR WEST DIV. CHAIRMAN

Mike Dee 420-4644
Bldg. 601
Amoco Research Center
Warrenville Road
Naperville, IL 60540

FAR WEST DIV. CHAIRMAN

Joe Brozovich 690-2898
Western Electric
Room 6C314
Bell Telephone Laboratories
Warrenville and Naperville Rds.
Naperville, IL 60450

Deadlines for ratings, bulletin

The deadline for submissions to next month's bulletin -- games, chairmen's reports, match results, letters, etc. -- is December 14. Anything received after that date will appear in the following issue.

Deadline for division chairmen to get match results to Terry Andresen is the first of each month. This will give him time to include the results in the ratings list and get the list to the bulletin in time for the next issue.

Division reports

EAST DIVISION -- TOM GAFFIGAN

Steve Perry is the new team captain for Harris Trust and Savings Bank, replacing Mark Ertel, who has terminated employment with Harris.

The new Alumni Central team is off to a strong start as expected. Illinois Bell's A-team is also showing early strength, having drawn matches with Sears #1 and First National Bank.

All teams are urged to try to have players available, no matter how weak they may be, to play extra boards or to act as alternates. In the event a regular player has to cancel out at the last minute. Harris Trust recently lost a match to Illinois Bell B, 3 to 2, in which the sixth board was a double forfeit. A sixth player for Harris would have meant a drawn match instead of a loss.

FAR WEST DIVISION -- JOE BROZOVICH

After three complete rounds of play, the Far West Division still has two undefeated teams: the BTL Dragons and the Western Electric Kingsmen. In the fourth round, the Dragons host the Wheaton Crusaders, while the Kingsmen travel to Argonne to meet the Pawns and their three experts. In the other matches, the Argonne Bishops host Arco, while the Argonne Rooks host the Western Electric-Montgomery team. This is the only round in the schedule in which all three Argonne teams are at home at the same time, so the Argonne teams should beware of scheduling all three matches on the same night.

NEAR WEST DIVISION -- MIKE DEE

After three rounds, the Western Electric Chargers are on top of our division. They show well balanced strength on all boards and great determination when playing their opponents. No doubt the Chargers deserve respect, but it is still too early to make predictions about the final outcome in the division. Other teams -- notably WesCom, the BTL Royals and the Argonne Knights -- have good chances to improve their positions on the ladder. The bottom four teams can also move up. I expect to see tough competition in the upcoming rounds, much tougher than in the first three rounds.

Match results

EAST DIVISION

R.R. Donneley 6, GATX 0: 1. G. Dobbins + G. Neidhardt; 2. H. Swanson + G. Vivian; 3. F. Leben + J. Passis; 4. J. Carlson + J. Rothchild; 5. R. Burk + A. Ginsburg; 6. A. Mackey + G. Doll; 7. F. Fajkucy + D. Lane. 4 Oct 77.

Harza 6, Metropolitan CC 0: 1. M. Stevanovic + A. Wilson; 2. P. Kolenda + forfeit; 3. O. Bujwip + forfeit; 4. R. Munoz + forfeit; 5. J. Baron + forfeit; 6. J. Rigor + forfeit. 5 Oct 77.

Harris Trust 2, IBT B-team 3: 1. S. Perry - M. Downs; 2. M. Ertel + J. Billingsley; 3. H. Beaty - B. Vollmer; 4. X. Bishop + M. Wedell; 5. forfeit - R. Randall. 11 Oct 77.

Metropolitan CC 0, R.R. Donneley 6: 1. A. Wilson - G. Dobbins; 2. J. Kindler - H. Swanson; 3. S. Sturgeon - F. Leben; 4. J. Clemens - J. Carlson; 5. J. Trinidad - R. Burk; 6. forfeit - F. Fajkucy. 11 Oct 77.

IBT A-team 3, Sears #1 3: 1. E. Sedlock + R. Golla; 2. K. Buell - E. Latimer; 3. G. Keith - T. Andresen; 4. K. Wollenberg = H. Chan; 5. H. Tacon = B. Morton; 6. W. Logelin + L. Steck. 12 Oct 77.

IBT B-team 0, IBT A-team 6: 1. M. Downs - E. Sedlock; 2. D. Lukes - K. Wollenburg; 3. B. Vollmer - G. Keith; 4. M. Wedell - K. Buell; 5. R. Randall - W. Logelin; 6. J. Bennett - R. Lauth. 25 Oct 77.

FNB 6, Harris Trust 0: 1. W. Leong + S. Perry; 2. W. Nyman + M. Ertel; 3. J. Gibbs + H. Beatty; 4. J. Van Scott + X. Bishop; 5. S. Nelson + M. Dickelman; 6. T. Gaffigan + forfeit. 26 Oct 77.

Sears #1 4, Sears Challengers 2: 1. R. Golla - R. Reyes; 2. E. Latimer + F. Kuch; 3. T. Andresen = M. Stone; 4. H. Chan + T. Campbell; 5. B. Morton + F. Ciba; 6. S. Schwatrz = L. Bess. 24, 25 Oct 77.

R.R. Donnelley 2, Alumni Central 4: 1. G. Dobbins - T. Czerniecki; 2. H. Swanson - J. Dunworth; 3. F. Leben + W. Stephan; 4. R. Burk - M. Cox; 5. C. Bell - R. Fabjonas; 6. E. Taylor + R. Dargis. 1 Nov 77.

Illinois Bell A 3, First National Bank 3: 1. J. Rodriguez - W. Leong; 2. E. Sedlock - W. Nyman; 3. K. Buell - J. Gibbs; 4. K. Wollenberg + J. Davis; 5. G. Keith + J. Van Scott; 6. W. Logelin + S. Nelson; 7. R. Lauth - T. Gaffigan. 1 Nov 77.

Harza 2½, Alumni Central 3½: 1. M. Stevanovic = T. Czerniecki; 2. J. Rigor + J. Dunworth; 3. O. Bujwid + R. Fabjonas; 4. W. Empleo - M. Cox; 6. J. Baron - R. Dargis.

FAR WEST DIVISION

BTL Dragons 5, Argonne Bishops 1: 1. D. Wilson = J. Jackson; 2. F. House = L. Shirkey; 3. C. Bhojwani + D. Baurac; 4. J. Rosen + K. Hostert; 5. J. Sobun + forfeit; 6. F. Myslinski + forfeit. 7 Oct 77.

Western Electric Kingsmen 3½, Wheaton College 2½: 1. J. Brozovich + A. Davidson; 2. W. Elliott = M. Burns; 3. R. Shaff + P. Kline; 4. R. Harringer + A. Smith; 5. J. Thomas - S. McClatchey; 6. R. Fish - T. Dzugan; 7. L. Kotelensky + E. Price. 18 Oct 77.

Argonne Pawns 3½, Western Electric Montgomery 2½: 1. D. Streets = L. Parker; 2. S. Mihailovich + L. Ciesla; 3. C. Horowitz + D. Finley; 4. W. Walsh - P. Weston; 5. H. Feder - G. Stredde; D. Johnson + K. Buehrine; 7. J.R. Meyer - D. Green (Argonne). 18 Oct 77.

Argonne Rooks 4½, Amco 1½: 1. R. Benedek + H. Schroeder; 2. D. Wilson + D. McGinn; 3. E. Appelman + E. Lambers; 4. D. Dever = D. Fajfar; 5. J. Barhorst + J. Reinhardt; 6. N. Beck - M. Dee. 19 Oct 77.

Western Electric Montgomery 2½, Western Electric Kingsmen 3½: 1. L. Parker = J. Brozovich; 2. R. Yuknavech = W. Elliott; 3. P. Weston - R. Harringer; 4. R. Lee - J. Blazie; 5. G. Stredde = R. Shaff; 6. A. Blair + forfeit. 1 Nov 77.

Argonne Bishops 0, Argonne Pawns 6: 1. J. Jackson - D. Streets; 2. D. Baurac - S. Mihailovich; 3. T. Jeanotte - C. Horowitz; 4. J. Daley - W. Walsh; 5. K. Coover - D. Green; 6. forfeit - J.R. Meyer; 7. H. Feder (Pawns) - d. Johnson. 1 Nov 77.

Wheaton Crusaders 3, Argonne Rooks 3: 1. M. Burns - R. Benedek; 2. A. Davidson + R. Wilson; 3. P. Kline + E. Appelman; 4. B. Price - R. Thompson; 5. S. McClatchey + D. Dever; 6. T. Dzugan - S. Decman. 3 Nov 77.

Amco 0, BTL Dragons 6: 1. R. Lee - F. House; 2. R. Thrash - C. Brenda; 3. M. Dee - J. Sobun; 4. E. Lambers - J. Rosen; 5. D. Fajfar - D. Pfeffer; 6. V. Reinhardt - F. Myslinski; 7. D. Dyck + G. DeWitt. 9 Nov 77.

NORTH DIVISION

Signode 3½, Sara Lee 2½: 1. A. Brosig - N. Anderson; 2. S. Huff - B. Sivula; 3. L. Stensaker + G. Pullar; 4. R. Pasterczak + B. Vickey; 5. E. Hoskins = D. Hanon; 6. M. Wiesen + J. Ratajczak. 20 Sept 77.

Kemper 2½, EXcaliburs 3½: 1. G. Leong + P. Wong; 2. J. Van Meer + E. Gastelu; 3. F. Fawcett - D. Danes; 4. H. Barber = J. Galvin; 5. M. Udovicic - J. Owen; 6. G. Wong - M. Volpe; 7. P. Lahoti - S. Edwards. 22 Sept 77.

Zenith-Glenview 4, Teletype 2: 1. R. Schulman + J. Klemm; 2. J. Agrawa + R. Titus; 3. J. Zivku - L. Drewes; 4. S. Ninkovic - H. Sue; 5. F. Conway + T. Manar-paac; 6. K. Dassie + R. Chao; 7. J. Weigand + J. Schmiesing. 27 Sept 77.

Motorola 6, ITT #2 0: 1. N. Goncharoff + A. Shoe; 2. J. Neumark + G. Kalucik; 3. J. Hemming + H. Posner; 4. C. Jacob + P. Rotton. 5. P. Greenspan + forfeit; 6. E. Schoen + forfeit. 28 Sept 77.

Teletype 2, Motorola 4: 1. F. Tegel = N. Goncharoff; 2. L. Adort = J. Neumark; 3. J. Gilmer + R. Ogasawara; 4. J. Klemm - J. Hemming; 5. R. Titus - P. Greenspan; 6. L. Drewes - D. Hernandez; 7. H. Sue - R. Comroe; 8. J. Schmiesing - E. Schoen. 11 Oct 77.

Procon 3½, Kemper 2½: 1. M. Tang = G. Leong; 2. J. Kozacky - J. Van Meer; 3. L. Timalad + H. Barber; 4. D. Stuhlberg + M. Udovicic; 5. M. Saifullah - P. Bloedow; 6. K. Basciani + forfeit. 12 Oct 77.

ITT #1 3, Zenith-Glenview 3: 1. R. Oelrich - R. Schulman; 2. M. Byckowski - J. Agpawa; 3. R. Cruz + F. Conway; 4. J. McAnany + Armstrong; 5. J. Barton + S. Ninkovic; 6. T. Macko - Puskas. 12 Oct 77.

ITT #2 0, Signode 6: 1. Petrick - A. Brusig; 2. H. Posner - L. Stensaker; 3. P. Rotton - S. Huff; 4. A. Shoe - A. Klein; 5. G. Kalucik - J. Klein; 6. forfeit - E. Hoskins. 13 Oct 77.

Signode 2, Teletype 4: 1. A. Brosig - F. Tegel; 2. L. Stensaker - L. Aldort; 3. P. Brosig - J. Klemm; 4. S. Huff - J. Gilmer; 5. M. Weisen + D. Drews; 6. R. Pasturczak + C. Valdez; 7. A. Klein - H. Sue; 8. J. Klein + J. Schmiesing; 9. A. Caracci - J. Klemm; 10. E. Hoskins + C. McKnown. 24 Oct 77.

Motorola 3½, ITT #1 2½: 1. N. Goncharoff = R. Oelrich; 2. J. Neumark + R. Cruz; 3. R. Ogasawara - M. Byckowski; 4. J. Henning + J. McAnany; 5. P. Greenspan + J. Barton; 6. C. Jacob - T. Macko; 7. D. Hernandez + G. Berg; 8. J. Sheber + W. Davis. 26 Oct 77.

NEAR WEST DIVISION

International Harvester 1, CPC 5: 1. D. Satterlee - J. Desjardins; 2. R. Motycka - J. Stejskal; 3. W. Kanas - B. Urbas; 4. W. Ristoff + J. Mudde; 5. D. Carter - F. Armbruster; 6. E. Owens - A. DeLeon. Rnd 1.

Zenith-Rauland 1½, WesCom 4½: 1. S. Karlovics - M. Flynn; 2. A. Sanchez = D. Graft; 3. R. Kling - S. Tay; 4. H. Tomlinson - P. Nelson; 5. D. Lopez - L. Lux; 6. H. Lopez + R. Medingero. Rnd 1.

Western Electric Chargers 4½, BTL Royals 1½: 1. J. Warren + K. Jakstas; 2. B. Marcowka = D. Anderson; 3. K. Dobr + G. Dewitt; 4. D. Kumro - P. Hoppner; 5. V. Stamm + N. Reid; 6. M. Alojado + F. Salomon. Rnd 1.

Argonne Knights 4, Argonne Monarchs 2: 1. C. Young + forfeit; 2. G. Berry - M. Peterson; 3. C. Ward + J. Bingle; 4. B. Nelson + R. Tewari; 5. G. Kinsella + L. Baker; 6. K. Burba - K. Kellogg. Rnd 1.

Argonne Monarchs 4½, WesCom 1½: D. Kucera + M. Flynn; 2. M. Peterson = S. Tay; 3. V. Krohn + D. Graft; 4. R. Tewari - P. Nelson; 5. K. Kellogg + L. Lux; 6. L. Baker + R. Hasz. Rnd 2.

BTL Royals 6, International Harvester 0: K. Jakstas + D. Satterlee; 2. D. Anderson + R. Motycka; 3. P. Hoppner + W. Kanas; 4. G. Dewitt + W. Ristoff; 5. G. Thomas + D. Carter; 6. N. Reid + E. Jacklin; 7. L. Martin - J. Dziedzic; 8. A. Reddick + A. Gesior; 9. F. Salomon + P. D'Anza. Rnd 2.

CPC 2, Zenith-Rauland 4: 1. B. Urbas - A. Sanchez; 2. J. Stejskal + R. Kling; 3. J. Mudde - H. Tomlinson; 4. F. Armbruster + J. Roelke; 5. A. DeLeon - D. Lopez; 6. L. Gibson - H. Lange. Rnd 2.

Argonne Knights ½, WE Chargers 5½: 1. C. Young - J. Warren; 2. G. Berry = B. Marcowka; 3. C. Ward - K. Dobr; 4. B. Nelson - D. Kumro; 5. G. Kinsella - V. Stamm; 6. W. Keig - M. Swiderski. Rnd 2.

Zenith-Rauland 1½, BIL Royals 4½: 1. S. Karlovics = K. Jakstas; 2. A. Sanchez + D. Anderson; 3. H. Tomlinson - P. Hoppner; 4. J. Roelke - P. Yang; 5. H. Lange - N. Reid; 6. D. Lopez - F. Salomon. Rnd 3.

WesCom 4, CPC 2: 1. M. Flynn + J. Desjardins; 2. D. Graft + J. Stejskal; 3. S. Tay - B. Urbas; 4. P. Nelson + J. Mudde; 5. L. Lux - F. Armbruster; 6. R. Hasz + M. Evans. Rnd 3.

International Harvester 1½, Argonne Knights 4½: 1. D. Satterlee = C. Young; 2. W. Kanas + G. Berry; 3. W. Ristoff - C. Ward; 4. T. Owens - B. Nelson; 5. W. Hallman - G. Kinsella; 6. P. D'Anza - W. Keig. Rnd 3.

WE Chargers 5, Argonne Monarchs 1: 1. J. Warren + D. Kucera; 2. B. Marcowka = M. Peterson; 3. K. Dobr + J. Bingle; 4. D. Kumro = K. Kellogg; 5. V. Stamm + R. Tewari; 6. M. Swiderski + forfeit. Rnd 3.

Algebraic notation

Some of the chess games in this issue are published in English descriptive notation (1. P-K4, ...), and others are published in algebraic notation (1. e4, ...). This is because we publish the games as they are submitted. Because not all league players are familiar with the algebraic system, we have adapted the following explanation from Chess Life and Review, the official magazine of the USCF.

In the algebraic system, the ranks are numbered from 1 to 8, beginning with White's first rank. The files are lettered from a to h, starting with White's QR file. This gives every square a unique designation consisting of a letter, which identifies the file, and a number, which identifies the rank. Pieces are designated as they are in the English descriptive notation, but the letter P, for pawn, is not used. A plus sign (+) indicates check. A colon (:) or an x may be used to indicate a capture, or the sign may be omitted since it is enough to indicate the piece and the square to which it moves. Any enemy piece on that square is assumed captured.

| | | | | | | | | |
|---|----|----|----|----|----|----|----|----|
| 8 | a8 | b8 | c8 | d8 | e8 | f8 | g8 | h8 |
| 7 | a7 | b7 | c7 | d7 | e7 | f7 | g7 | h7 |
| 6 | a6 | b6 | c6 | d6 | e6 | f6 | g6 | h6 |
| 5 | a5 | b5 | c5 | d5 | e5 | f5 | g5 | h5 |
| 4 | a4 | b4 | c4 | d4 | e4 | f4 | g4 | h4 |
| 3 | a3 | b3 | c3 | d3 | e3 | f3 | g3 | h3 |
| 2 | a2 | b2 | c2 | d2 | e2 | f2 | g2 | h2 |
| 1 | a1 | b1 | c1 | d1 | e1 | f1 | g1 | h1 |
| | a | b | c | d | e | f | g | h |

| ALGEBRAIC | | ENGLISH | |
|-----------|----------|---------|------------|
| 1. | e4 e5 | 1. | P-K4 P-K4 |
| 2. | d4 ed | 2. | P-Q4 Pxp |
| 3. | c3 dc | 3. | P-QB3 Pxp |
| 4. | Bc4 cb | 4. | B-QB4 Pxp |
| 5. | Bb2 d5 | 5. | Bxp P-Q4 |
| 6. | Bd5 Nf6 | 6. | BxQP N-KB3 |
| 7. | Bf7+ Kf7 | 7. | Bxpch KxB |
| 8. | Qd8 Bb4+ | 8. | QxQ B-N5ch |
| 9. | Qd2 Bd2+ | 9. | Q-Q2 BxQch |
| 10. | etc. | 10. | etc. |

Ratings

The rating list will now indicate CICL Century Club members, veterans of 100 or more league games, with a "c" beside their rating.

Rating chairman Terry Andresen had received no results from the Near West Division by November 15.

| PLAYER | TEAM | RATING | GAMES | PLAYER | TEAM | RATING | GAMES | | |
|------------|------|--------|-------|--------|------------|--------|-------|-------|---|
| AGRAWA | ,T | ZENTH | 1573 | 2 | HUFF | ,S | SIGND | 1448* | 3 |
| ALDORT | ,L | TTY | 1630 | 2 | JACKSON | ,J | BSMPS | 1980C | 3 |
| ANDERSON | ,N | SARAL | 1892 | 1 | KEITH | ,G | IBT-A | 1655 | 2 |
| ANOKSEN | ,T | SRS#1 | 1609 | 2 | KLEIN, A | | SIGND | 1437* | 2 |
| APPELMAN | ,E | ROOKS | 1659 | 2 | KLEIN, J | | SIGND | 1200 | 2 |
| BARMORST | ,J | ROOKS | 1463# | 2 | KLEMM | ,J | TTY | 1497 | 4 |
| BAUFAC | | BSMPS | 1321# | 3 | KLINE | | CRSDR | 1099# | 3 |
| BECK | ,N | ROOKS | 1401 | 1 | KUZALSKY | ,J | PRCON | 1786 | 1 |
| BENEDEK | ,R | ROOKS | 2210 | 3 | KUCH | ,E | SRSCH | 1643* | 2 |
| BLAZIE | ,J | KNGMN | 1701* | 1 | LATIMER | ,R | SRS#1 | 1907 | 2 |
| BRENDA | ,C | DRGNS | 1661 | 1 | LAUTH | ,R | IBT-A | 1479C | 1 |
| BRUSIG | ,A | SIGND | 1643 | 4 | LEEN | ,F | KRD | 1598 | 2 |
| BROZOVICH | ,J | KNGMN | 1745 | 3 | LEE | ,R | WEMNT | 1473* | 2 |
| BUELL | ,K | IBT-A | 1575 | 2 | LEE | ,R | AMOCO | 1623 | 2 |
| BUKK | ,R | KRD | 1517 | 2 | LEMS | ,S | SRSCH | 1519 | 1 |
| BYCKOWSKI | ,M | TTY-1 | 1514 | 1 | LEONG | | FNBK | 1457# | 1 |
| CAMPBELL | ,T | SRSCH | 1475 | 1 | LOGELIN | ,W | IBT-A | 1540 | 2 |
| CARLSON | ,J | KRD | 1534* | 2 | MACKAY | ,A | KRD | 1443# | 1 |
| CHAN | | SRS#1 | 1780* | 2 | MCANANY | ,J | TTY-1 | 1413 | 1 |
| CIBA | ,F | SRSCH | 1470 | 2 | MEYER | ,JR | PAWNS | 1328# | 2 |
| COMROE | ,R | MTRLA | 1180# | 1 | MIHAJLOVIC | ,S | PAWNS | 1939C | 2 |
| CONWAY | ,F | ZENTH | 1504* | 2 | MORTON | ,E | SRS#1 | 1697* | 2 |
| CZERNIECKI | | ALUMN | 2190* | 1 | MUIR | ,L | AMOCO | 1625 | 1 |
| DALEY | ,J | BSMPS | 1355 | 2 | MYSLINSKI | ,S | DRGNS | 1486* | 1 |
| DANES | ,D | ALUMN | 1673* | 1 | NELSON | ,S | FNBK | 1472# | 1 |
| DARGIS | ,E | ALUMN | 1537 | 1 | NEUMARK | ,J | MTRLA | 1722C | 2 |
| CASSIE | ,K | ZENTH | 1520* | 1 | NYMAN | ,W | FNBK | 1854 | 1 |
| DAVIDSON | | CRSDR | 1563# | 3 | DELRIKH | ,K | TTY-1 | 1688 | 1 |
| DELMAN | ,S | ROOKS | 1499 | 2 | OCASAWARA | ,K | MTRLA | 1630C | 1 |
| DEE | ,M | AMOCO | 1372 | 2 | OWEN | ,J | ALUMN | 1484* | 1 |
| DEVER | ,D | ROOKS | 1515 | 3 | PARKER | ,L | WEMNT | 1978* | 3 |
| DEEBINS | ,G | KRD | 1097C | 2 | PASTURCZAK | ,R | SIGND | 1318 | 2 |
| DOWNS | ,M | IBT-B | 1398# | 2 | PFEFFER | ,D | DRGNS | 1518* | 2 |
| DUNWORTH | ,J | ALUMN | 1893 | 1 | PUDAITI | | CRSDR | 1354# | 1 |
| ELLIOTT | ,W | KNGMN | 1600C | 3 | PULLAK | | SARAL | 1120# | 1 |
| ERTEL | ,M | PARIS | 1335* | 2 | REINHARDT | ,V | AMOCO | 1255# | 2 |
| FABIJONAS | ,R | ALUMN | 1770C | 1 | RENNER | ,I | PAWNS | 1493 | 1 |
| FAJFAR | ,DJ | AMOCO | 1500* | 3 | REYES | ,R | SRSCH | 2213 | 2 |
| FELER | ,H | PAWNS | 1334 | 3 | ROSEN | ,J | DRGNS | 1500 | 3 |
| FISH | ,R | KNGMN | 1511* | 2 | ROTHSCHILD | ,J | CATX | 1300* | 1 |
| GAILUS | ,W | ALUMN | 1387* | 1 | SAIFULLAH | ,M | PRCON | 1739* | 1 |
| GALVIN | ,J | ALUMN | 1507 | 1 | SCHROEDER | ,R | AMOCO | 1670 | 1 |
| GASTELU | ,E | ALUMN | 1792 | 1 | SCHROEDER | ,H | ZENTH | 1799 | 2 |
| GIBBS | | FNBK | 1700# | 1 | SCHWARTZ | ,S | SRS#1 | 1642C | 1 |
| GILMER | ,J | TTY | 1550 | 2 | SEJLOCK | ,E | IBT-A | 1788 | 2 |
| GULLA | ,R | SRS#1 | 1900 | 2 | SHAFF | ,R | KNGMN | 1510 | 2 |
| GUNCHAKOFF | ,N | MTRLA | 1799C | 2 | SHIRKEY | ,L | BSMPS | 1608 | 2 |
| GREEN | ,D | PAWNS | 1407 | 3 | SIVULA | ,S | SARAL | 1442 | 1 |
| GREENSPAN | ,P | MTRLA | 1537C | 1 | SUEUN | ,L | DRGNS | 1624 | 2 |
| HARRINGER | ,R | KNGMN | 1519 | 1 | STENAKER | ,L | SIGND | 1470 | 3 |
| HENNING | ,J | MTRLA | 1000 | 2 | STEPHAN | ,W | ALUMN | 1855* | 1 |
| HERNANDEZ | ,D | MTRLA | 1493 | 1 | STEVANOVIC | | PAR7A | 2000# | 1 |

More ratings

| PLAYER | TEAM | RATING | GAMES | NEW PLAYER | TEAM |
|------------|-------|--------|-------|------------|-------|
| SUE | TTY | 1432# | 3 | ARMSTRONG | ZENTH |
| SWANSON | BRD | 1625 | 2 | BARBER | KEMPR |
| TACON | IBT-A | 1047 | 1 | BASCIANI | PRCON |
| TANG | PRCON | 1047# | 1 | BENNETT | IBT-B |
| TEGEL | TTY | 20+3 | 2 | BESS | SKSCH |
| THOMAS | KNGMN | 1408 | 2 | BHOJWANI | DRGNS |
| THOMPSON | BSHPS | 1191# | 1 | BISHOP | HARIS |
| TITUS | TTY | 1072* | 2 | BLUEDOW | KEMPR |
| TUMALAD | PRCON | 1478* | 1 | BUEHRING | WEMNT |
| VANSCOTT | ENBNK | 1512* | 1 | CHAO | TTY |
| VICKEY | SARAL | 1256# | 1 | CIESLA | WEMNT |
| VIVIAN | GATX | 1380 | 1 | CLEMENS | METCC |
| VOLPE | ALUMN | 1307 | 1 | COOKER | BSHPS |
| WALSH | PAWNS | 1647 | 3 | CRUZ | ITT-1 |
| WESTON | AMOCO | 1459* | 1 | DEWITT | DRGNS |
| WESTON | WEMNT | 1301 | 3 | DICKELMAN | HARIS |
| WILSON | DRGNS | 2008C | 2 | DZUGAN | CRSDR |
| WILSON | ROOKS | 1738 | 3 | FAJKUCY | KRD |
| WOLLENBERG | IBT-A | 1059 | 2 | FAWCETT | KEMPR |
| YURNAVECH | WEMNT | 1527* | 2 | FINLEY | WEMNT |

5-9 GAMES

* 10-24 GAMES

C. CENTURY CLUB MEMBER

MUST IMPROVE PLAYER

AWARD CANDIDATES

| PLAYER | INCR | TEAM | DIV |
|------------|------|-------|-----|
| GILMER | 050 | TTY | NO |
| SHIRKEY | 045 | BSHPS | FW |
| SEDLACK | 039 | IBT-A | EA |
| KROZOVICH | 033 | KNGMN | FW |
| PFEFFER | 029 | DRGNS | FW |
| AGPAWA | 027 | ZENTH | NO |
| CZERNIECKI | 027 | ALUMN | EA |
| LEMS | 027 | SKSCH | EA |
| SIVOLA | 027 | SARAL | NO |
| STREETS | 020 | PAWNS | FW |

| | |
|--------------|-------|
| ARMSTRONG | ZENTH |
| BARBER | KEMPR |
| BASCIANI | PRCON |
| BENNETT | IBT-B |
| BESS | SKSCH |
| BHOJWANI | DRGNS |
| BISHOP | HARIS |
| BLUEDOW | KEMPR |
| BUEHRING | WEMNT |
| CHAO | TTY |
| CIESLA | WEMNT |
| CLEMENS | METCC |
| COOKER | BSHPS |
| CRUZ | ITT-1 |
| DEWITT | DRGNS |
| DICKELMAN | HARIS |
| DZUGAN | CRSDR |
| FAJKUCY | KRD |
| FAWCETT | KEMPR |
| FINLEY | WEMNT |
| HANSON | SARAL |
| HOSTERT | BSHPS |
| KALUCIK | ITT-2 |
| KINDLEBURGER | METCC |
| LAHOTI | KEMPR |
| LEONG | KEMPR |
| LIPS | WEMNT |
| LUKES | IBT-B |
| MACKO | ITT-1 |
| MCCLATCHY | CRSDR |
| NEIDHARDT | GATX |
| NINKOVIC | ZENTH |
| PERRY | HARIS |
| PUSHER | ITT-2 |
| PUSKAS | ZENTH |
| RANDALL | IBT-B |
| KATAJCZAK | SARAL |
| SCHMIESING | TTY |
| SCHDEN | MTRLA |
| SHOE | ITT-2 |
| SMITH | CRSDR |
| STREDUE | WEMNT |
| STODGEON | METCC |
| THOMPSON | ROOKS |
| THRASH | AMOCO |
| TRINIDAD | METCC |
| UDOVICAL | KEMPR |
| UDOVICK | KEMPR |
| VALDEZ | TTY |
| VANMEER | KEMPR |
| VOLLMER | IBT-B |
| VUONG | PRCON |
| WEDELL | IBT-B |
| WELJANO | ZENTH |
| WELSON | METCC |
| WONG | KEMPR |
| YACOB | MTRLA |
| YASHMOUR | PRCON |
| ZIVKU | ZENTH |

More ratings

NORTH DIVISION

BIG TEN

| PLAYER | RATING | TEAM |
|------------|--------|-------|
| TEGEL | 2043 | TTY |
| ANDERSON | 1892 | SARAL |
| GONCHAROFF | 1799 | MTRLA |
| SCHULMAN | 1799 | ZENTH |
| KOZACKY | 1786 | PRCON |
| NEUMARK | 1772 | MTRLA |
| DELRICH | 1668 | ITT-1 |
| HENNING | 1653 | MTRLA |
| BROSIG | 1643 | SIGND |
| ALLURT | 1630 | TTY |

EAST DIVISION

BIG TEN

| PLAYER | RATING | TEAM |
|-----------|--------|-------|
| REYES | 2213 | SRSCH |
| LATIMER | 1907 | SRS#1 |
| GOLLA | 1900 | SRS#1 |
| DUNWORTH | 1893 | ALUMN |
| NYMAN | 1854 | FNENK |
| ANDRESEN | 1809 | SRS#1 |
| CASTELU | 1792 | ALUMN |
| SEBLOCK | 1788 | IBT-A |
| FABIJONAS | 1776 | ALUMN |
| COBBINS | 1697 | KRD |

We need games

FAR-WEST DIVISION

BIG TEN

| PLAYER | RATING | TEAM |
|-----------|--------|-------|
| BENEDEK | 2210 | ROUKS |
| STREETS | 2117 | PAWNS |
| WILSON | 2008 | DRGNS |
| JACKSON | 1980 | BSHPS |
| MIHALOVIC | 1939 | PAWNS |
| SCHROEDER | 1870 | AMCCO |
| HOOSE | 1850 | DRGNS |
| BRUZOVICH | 1745 | KNGMN |
| WILSON | 1738 | RUCKS |
| SPENDA | 1631 | DRGNS |

Yes, the Chicago Industrial Chess League Bulletin needs games -- copies of your league games to publish. Instructive games and entertaining games. Close games where you systematically squeezed victory out of an infinitesimal advantage, and wild games where you stole victory from the jaws of defeat because your opponent played like a patzer.

We need annotated games and unannotated games, but we will publish the annotated ones first. Submissions do not need to be typewritten, just legible. And if you annotate a game, please tell us who you are so we can give you credit for your notes.

Send submissions to: David Baurac, Editor, CICL Bulletin, 7517 Country Lane South, Darien, Ill. 60559

JOIN USCF

CHESS NEWS

Karpov first at Tilburg

World champion Anatoly Karpov of the USSR won the year's strongest tournament with a score of 8-3.

The tournament was a round robin at Tilburg, Holland, with 12 grandmasters from nine countries. Karpov finished without a loss, winning five and drawing six.

In second place was Anthony Miles of England with a score of 7-4. Karpov's win over Miles in the second round proved to be his eventual margin of victory.

Karpov and Miles were tied for first after eight rounds, but Karpov pulled a half-point ahead by winning rounds nine and 10 while Miles was winning one and drawing the other.

In the final round, Karpov drew quickly with Vlastimil Hort of Czechoslovakia, and Miles, realizing he could tie for first went all out a-

gainst Sweden's Ulf Andersson, who had not won a single game in the first 10 rounds. Andersson held out this time, however, and defeated Miles who had to settle for second place with five wins, two losses and four draws.

Hort and Lubomir Kavalek of Reston, Va., the only American in the event, were the only undefeated players besides Karpov. They both won one and drew 10. Their 6-4 scores tied them for third place with Jan Timmin of Holland and Robert Huebner of West Germany.

Karpov has been by far the most active champion in recent history. He has entered nearly every major tournament in the last two years and has won most of them outright. He caused a sensation in Leningrad earlier this

(Continued on page 14.)

Candidates Matches

Victor Korchnoi assumed a $1\frac{1}{2}$ to $\frac{1}{2}$ point lead over Boris Spassky in the final candidates match to determine a challenger for world champion Anatoly Karpov of the USSR. Korchnoi won the second game, playing the black side of a French Defense, after drawing the first game with the white pieces.

The match had been scheduled to start on November 15 in Belgrade, Yugoslavia, but was delayed about a week after Korchnoi injured his right hand in a traffic accident.

points is the winner. If the score is tied after 20 rounds, a series of two-game minimatches will be held, and the first player to score at least $1\frac{1}{2}$ in a minimatch will be the winner. Each minimatch will begin with a coin toss to determine playing colors.

Both Spassky and Korchnoi are among the select group of Russian players who dominated world chess for 25 years. From 1948 to 1972, the world championship was held by a Rus-

(Continued)

US champ...

(Continued from first page.)

still a point ahead of the field going into round seven.

After drawing the next three games, he was still in first place, going into round 10 with a 6-3 score. Close behind were Byrne and Anatoly Lein of Long Island City, N.Y., both with $5\frac{1}{2}$ - $3\frac{1}{2}$.

In round 10, Browne again went a full point ahead, winning his game while Byrne was held to a draw and Lein fell to another former U.S. champion, Samuel Reshevsky of Spring Valley, N.Y.

In the next two rounds, however, Byrne drew even with Browne, winning both games while Browne drew with Reshevsky and Lein. Both had scores of 8-4.

Tied for third at 7-5 were Grefe and Reshevsky. With one round left, neither could reach first place unless both leaders lost.

In the final round, Byrne drew quickly with Bernard Zuckerman of New York, N.Y., and was assured of at least second place.

Unwilling to settle for a similar result, Browne tried hard for a win against Larry Christiansen of Modesto, Calif. He succeeded and won his third successive U.S. championship. Byrne finished second at $8\frac{1}{2}$ - $4\frac{1}{2}$.

Tied for third at $7\frac{1}{2}$ - $5\frac{1}{2}$ were Grefe and Reshevsky. Lein and Zuckerman tied for fifth with 7-6. They were the drawing masters of the tournament with identical records of two wins, one loss and 10 draws.

Tarjan finished at an even $6\frac{1}{2}$ - $6\frac{1}{2}$, just above Christiansen and Sal Matera of New York, N.Y., who were 6-7.

Other results were Dumitru Ghizdavu of Cleveland, John Peters of Los Angeles and Leonid Shamkovich of Long Island City, N.Y., $5\frac{1}{2}$ - $7\frac{1}{2}$; Andrew Solris of New York, N.Y., 5-8; and John

The following game is from the tournament.

QUEEN'S INDIAN DEFENSE

Browne - Grefe

Mentor 1977

| | |
|------------|---------|
| 1. P-Q4 | N-KB3 |
| 2. P-QB4 | P-K3 |
| 3. N-KB3 | P-QN3 |
| 4. P-KN3 | B-N2 |
| 5. B-N2 | B-K2 |
| 6. O-O | O-O |
| 7. N-B3 | N-K5 |
| 8. Q-B2 | NxN |
| 9. QxN | P-QB4 |
| 10. R-Q1 | P-Q3 |
| 11. P-N3 | B-KB3 |
| 12. B-N2 | Q-K2 |
| 13. Q-B2 | N-B3 |
| 14. P-K4 | P-N3 |
| 15. P-Q5 | N-N5 |
| 16. BxB | QxB |
| 17. Q-Q2 | PxP |
| 18. KPxP | B-B1 |
| 19. P-QR3 | N-R3 |
| 20. N-N5 | B-B4 |
| 21. Q-B4 | K-N2 |
| 22. P-KN4 | P-R3 |
| 23. P-KR4 | BxP |
| 24. QxB | PxN |
| 25. PxP | Q-B4 |
| 26. Q-N3 | R-R1 |
| 27. R-K1 | QR-K1 |
| 28. Q-B3ch | R-K4 |
| 29. R-K4 | K-R2 |
| 30. RxR | PxR |
| 31. R-K1 | R-K1 |
| 32. Q-N3 | K-N1 |
| 33. P-B4 | Resigns |

Spassky-Korchnoi

(Continued from previous page.)

sian.

When Spassky lost the championship to Robert Fischer in 1972, he fell into disfavor with Soviet chess authorities, and life in Moscow became unpleasant for him.

In 1975, Spassky asked permission

FIDE meeting

FIDE changed the rules for next year's world championship match and awarded international titles to several Americans at its October Central Committee meeting in Caracas, Venezuela.

FIDE (Federation Internationale des Echecs) is the governing body for international chess.

Ed Formanek of Illinois was one of three Americans honored with the International Master title. The others were Mark Diesen of Maryland and Michael Rohde of New Jersey.

Larry Christiansen of California was the only American awarded the title of International Grandmaster, the highest title FIDE awards short of World Champion. In all, 14 new grandmasters and 44 international masters received titles.

Two American women, Ruth Orton of Arizona and Diane Savereide of California, were among 12 women awarded Woman International Master titles.

Robert Fischer will be happy to learn that draws will not count next year when world champion Anatoly Karpov plays the winner of the Boris Spassky-Victor Korchnoi match, just getting under way in Belgrade, Yugoslavia. Under the new rules, the championship match will continue until someone wins six games. There is no longer any limit to the length of the match.

If the challenger wins the match, a rematch will be held within 12 to 15 months of the end of the first match. The rematch will be played under the same rules, but there will be no return match provision for the loser.

JOIN USCF

Spassky-Korchnoi

(Continued from previous page.)

to marry a woman working in the French embassy in Moscow and to live with her in Paris. The marriage and move were approved, but Spassky had to agree not to play in the coming cycle of candidates matches. He had been seeded into the matches as a former champion.

But when Fischer, who had been dethroned as champion for his refusal to defend his crown in 1975, declined to play in the candidates matches, his replacement, based on the original list, was Spassky.

The Russian's experience with Korchnoi was even worse. Unlike Spassky, Korchnoi did not ask permission to leave the country. He defected after winning a strong international tournament in Holland in the summer of 1976.

(A well known American grandmaster has stated that the main reason Spassky does not defect is that he would have to leave behind his entire chess library. The library contains not only books, but also his notes to all his games, including the match with Fischer.)

Korchnoi's problems with the USSR chess hierarchy began after he lost a long match with Karpov. The winner of the match was to face Fischer for the championship. After the match, Korchnoi upset Soviet chess authorities by stating publicly that Karpov would have no chance against Fischer.

Karpov's acquisition of the title by default did not improve Korchnoi's standing among his compatriots, and he seized the first opportunity to defect.

Because he had reached the final round in the previous championship cycle, Korchnoi was entitled to a spot in the candidates matches that were about to start. The Russians argued that he had attained his success as a

(Continued next page.)

Karpov first...

(Continued from page 11.)

year by actually losing two games and finishing fourth. Otherwise, his string of successes as been almost unbroken.

The average ELO rating of the 12 grandmasters at Tilburg was 2582. Karpov's game with Miles follows.

ENGLISH OPENING Karpov - Miles Tilburg 1977

| | |
|---------|---------|
| 1. c4 | c5 |
| 2. Nf3 | Nf6 |
| 3. Nc3 | Nc6 |
| 4. d4 | cd4 |
| 5. Nd4 | e6 |
| 6. g3 | Qb6 |
| 7. Nb3 | Ne5 |
| 8. e4 | Bb4 |
| 9. Qe2 | a5 |
| 10. Be3 | Qc6 |
| 11. f3 | 0-0 |
| 12. Nd4 | Qa6 |
| 13. Nb5 | d5 |
| 14. Nc7 | Qd6 |
| 15. Na8 | de4 |
| 16. fe4 | Ne4 |
| 17. Rd1 | Qc6 |
| 18. Bg2 | Nc4 |
| 19. Bd4 | Bc3+ |
| 20. bc3 | f5 |
| 21. 0-0 | Ncd6 |
| 22. Nb6 | e5 |
| 23. Nc8 | Rc8 |
| 24. Be5 | Qc5+ |
| 25. Bd4 | Resigns |

Spassky-Korchnoi

(Continued from previous page.)

Russian and that, since he had defected, he should be disqualified and replaced by another Russian.

The Federation Internationale des

Echecs, the world governing body of chess, ruled otherwise. They said that Korchnoi had earned his place as an individual and was entitled to stay.

The USSR chess authorities drew up a letter condemning Korchnoi for his defection. Many Russian grandmasters signed the letter at the insistence of their federation, but Spassky refused.

The outcome of the Spassky-Korchnoi match is difficult to predict. In an earlier match in 1968, Spassky emerged the winner.

Still, Korchnoi must be rated the favorite. He is playing the best chess of his life and trounced two Russians, former world champion Tigran Petrosian and Lev Polugaevsky, to get to the final round.

The two men have much in common. Their ages are close: Korchnoi is 46 and Spassky is 40. Both were born in Leningrad and have Jewish heritage on their mother's side. Karpov, on the other hand, is 26 and of "pure" Russian descent.

What chance would Spassky or Korchnoi have against Karpov? Probably very little. Karpov has been the most active champion in recent history, entering many strong international events and winning most of them outright.

But Spassky and Korchnoi are confident. In a recent interview, Spassky said, "If there is one man in the world who can beat Karpov, it is me. I am just getting into my best form and will be at my peak for the championship match."

Korchnoi, during his recent tour of the United States, repeatedly said, "Karpov is more afraid of me than of anyone else. His fear of losing, especially to me, will always be on his mind."

JOIN USCF

Grandmaster Classics

Thomas-Alekhine, Baden-Baden 1925

Except for a brief two year period, Alexander Alekhine (1892-1946) was world chess champion from 1927 until his death. From 1929 through 1934, he entered 13 major tournaments, winning 11 outright and tying for first in another. His overall record during those years was an incredible 123 wins, 48 draws and five losses. When he entered a tournament, the chess world assumed he would win.

A recognized master at 16, Alekhine subjected his natural genius to the discipline of hard work, spending long hours at analysis. It was this discipline that enabled him to wrest the championship from Capablanca. Capablanca relied on his natural genius and refused to spend the long hours that most masters invest in opening analysis. As a result, his opening repertoire was small. In their 1927 match, Alekhine featured one well prepared new opening idea after another. When he secured a small opening advantage, he resigned himself to the long task of squeezing it for all it was worth. In the end, Alekhine won a long match with a score of six wins, three losses and 25 draws. He never gave Capablanca a rematch.

Alekhine is known as a combinative genius and one of the great attacking players of all time. The game that follows, however, shows his positional ability. The game has appeared in several middle game textbooks. It illustrates the attack on hanging pawns and the use of open files for maneuvering heavy pieces.

ALEKHINE'S DEFENSE Thomas - Alekhine Baden-Baden 1925

1. P-K4 N-KB3
2. P-Q3
 A timid move. More aggressive is
2. P-K5, N-Q4; 3. P-Q4, P-Q3; 4. P-QB4,
N-N3, and White can choose between the
Four Pawns Attack, 5. P-B4, and the
Exchange Variation, 5. PxP.
2. ... P-B4
3. P-KB4 N-B3
4. N-KB3 P-KN3
5. B-K2
 Nimzovich recommended 5. P-B4.
5. ... B-N2
6. QN-Q2?
 Alekhine said 6. P-B4 was essen-
tial here, even though it concedes
White's Q4 to Black, to prevent the

following move.

6. ... P-Q4
7. O-O O-O
8. K-R1 P-N3
9. PxP QxP
9. ... NxP permits 10. N-K4.
10. Q-K1 B-N2
11. N-B4

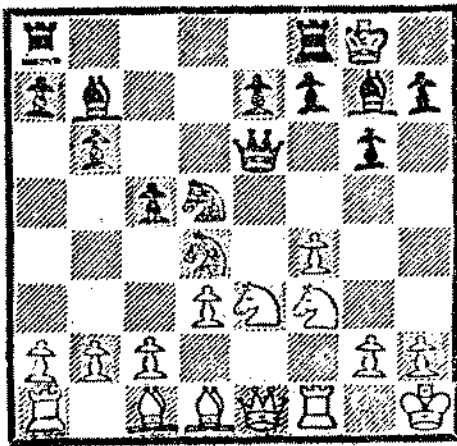
White's game is cramped because of his failure to play P-QB4. His knight is well posted on B4, but his KB is hemmed in on K2. Black's pieces, on the other hand, are well placed, fighting for the center.

11. ... N-Q5

Occupying the outpost on the half-open Q-file.

12. N-K3
13. B-Q1

Q-K3
N-Q4!



Position after 13. ... N-Q4!

Black's centralized pieces virtually force White to exchange them in an attempt to free his game. The result, however, is to open files that increase Black's advantage.

14. KNxN

The Attempt to win a pawn by 14. N(K3)xN, QxN; 15. QxP fails after ... KR-K1; 16. Q-N5, NxN; 17. BxN, QxQ; 18. PxQ, BxB; 19. PxB, R-R7 with advantage to Black. (Alekhine)

14. ... PxN

Opening the QB-file.

15. NxN QxN

16. B-B3 Q-Q2

17. BxB QxB

18. P-B4

Otherwise the backward QBP would remain a terrible weakness in White's camp. The text, however, enables

Black to open his Q-file.

18. ... PxPep

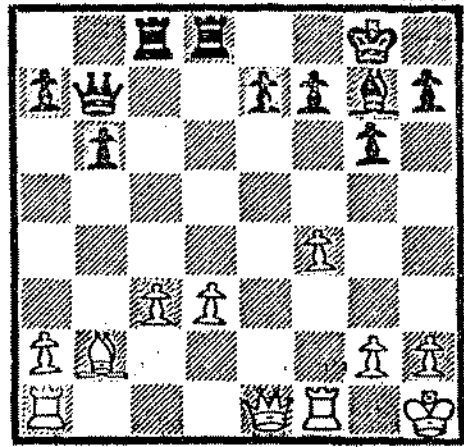
19. PxP QR-B1

20. B-N2

20. B-K2 is slightly better, according to Alekhine.

20. ... KR-Q1

Black's rooks dominate the open files and, aided by the fianchettoed KB, bombard White's hanging pawns. Alekhine's attack proceeds in textbook fashion.



Position after 20. ... KR-Q1.

21. R-B3

B-B3

Relieving the Q from her duty to protect PK2.

22. P-Q4

This is positional capitulization, but White had little choice because of the threat of ... Q-R3 followed by doubling the black rooks on the Q-file. Alekhine will now blockade the hanging pawns on the dark squares, and his control of the light squares will win.

22. ... Q-Q4

23. Q-K3 Q-QN4

24. Q-Q2 R-Q4

25. P-KR3 P-K3

26. R-K1 Q-R5

27. R-R1 P-QN4

28. Q-Q1 R-B5

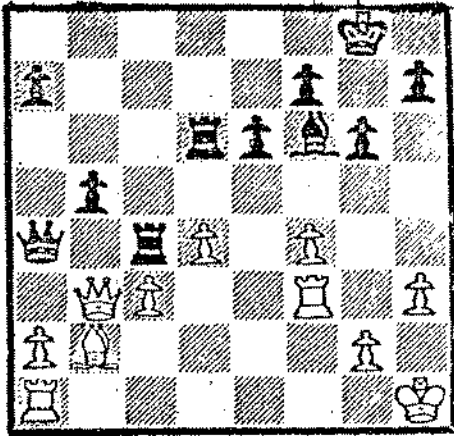
28. ... QxQ is also good, "but Black is not in a hurry. The adversary will not be able to avoid the exchange." -- Alekhine.

Black plans to tie White's pieces to the defense of the Q-side and then attack his K-side. The Q exchange will cut White's tactical changes and enhance the power of Black's K on the K-side.

29. Q-N3

R-Q3

Black will regroup his heavy pieces, posting his Q on QB5 and his rooks on QR5 and QR3. The pressure on the white QRP will force a Q exchange under conditions favorable to Black.



Position after 29. ... R-Q3.

- | | |
|-----------|----------|
| 30. K-R2 | R-R3 |
| 31. KR-B1 | B-K2 |
| 32. K-R1 | R(5)-B3! |
| 33. KR-K1 | B-R5 |

Chasing the rook from the K-file.
 If 34. R-K5?, QxQ; 35. PxQ, RxBch; 36. BxR, R-R3; 37. B-N2, R-R7; 38. R-K2, B-N6 wins. If 34. R-K2, QxQ; 35. PxQ, RxBch; 36. BxR, B-N6, and White cannot protect the KBP because of the threatened 37. ... R-R3; 38. B-N2, R-R7.

- | | |
|-----------|------|
| 34. R-KB1 | Q-B4 |
| 35. QxQ | |

To prevent the maneuver described in the note to move 29.

- | | |
|---------|-----|
| 35. ... | RxQ |
|---------|-----|

"The exchange is grist to Black's mill, for now White's QRP has become very weak. The student should notice that the exchange is the direct, almost automatic consequence of the quiet seizing of strategically important points. The beginner seeks to bring about an exchange in other ways; he pursues the piece which tempts him with offers to elope (exchange), only to have them refused. The master occupies the strong points, and the exchange which seems desirable to him falls like ripe fruit into his lap."

-- Nimzovich.

- | | |
|------------|------|
| 36. P-R3 | B-K2 |
| 37. KR-QN1 | B-Q3 |
| 38. P-N3 | K-B1 |

Black must bring his K to QB3 to protect his QNP before playing ... R-R5 and capturing White's QRP.

- | | |
|--------------|----------|
| 39. K-N2 | K-K2 |
| 40. K-B2 | K-Q2 |
| 41. K-K2 | K-B3 |
| 42. R-R2 | R(5)-R5. |
| 43. R(1)-QR1 | K-Q4 |
| 44. K-Q3 | R(3)-R4 |
| 45. B-B1 | P-QR3 |
| 46. B-N2 | P-R4! |

Alekhine shifts his attack to the K-side, threatening ... P-R5. White's pieces are tied to the defense of his QRP.

- | | |
|----------|-------|
| 47. P-R4 | P-B3! |
|----------|-------|

Now there is no defense to ...

- | | |
|----------|------|
| P-K4. | |
| 48. B-B1 | P-K4 |
| 49. BPxP | PxP |
| 50. B-N2 | |

If 50. PxP, BxKP; 51. R-KN2, R-KN5, winning (Pachman), or 51. B-B4, BxB; 52. PxB, K-K3!, winning (Alekhine).

- | | |
|---------|------|
| 50. ... | PxP |
| 51. PxP | P-N5 |

"... The sole purpose of the breakthrough was to get the disturbing QBP out of the way." -- Nimzovich.

- | | |
|-------------|-----|
| 52. PxP | RxR |
| 53. PxR | RxB |
| 54. Resigns | |

Notes to this game were compiled from A. Alekhine's My Best Games of Chess 1924-1937, A. Nimzovich's My System and L. Pachman's Modern Chess Strategy.

Seek problem editor

Newman Guttman will not be contributing chess problems to the bulletin this year. Anyone interested in providing chess problems to the bulletin, please contact David Baurac at 739-7711, ext. 5220.

Games of interest

ENGLISH OPENING
H. Ingersol - V. Stamm

Notes by the winner.

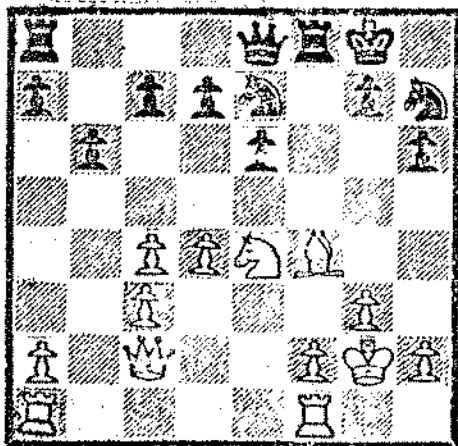
- | | |
|------------------------------------|-------|
| 1. P-QB4 | N-KB3 |
| 2. N-QB3 | P-K3 |
| 3. P-KN3 | B-QN5 |
| (More usual is 3. ... P-Q4. - Ed.) | |
| 4. N-KB3 | BxN |

In order to limit White's control over his Q5 and double his pawns.

- | | |
|-----------|-------|
| 5. N Px B | P-QN3 |
| 6. B-KN2 | B-N2 |
| 7. O-O | O-O |
| 8. Q-B2 | N-B3 |
| 9. P-Q3 | P-KR3 |
| 10. P-K4 | N-K2 |
| 11. P-K5 | N-R2 |
| 12. P-Q4 | P-KB4 |

If White captures en passant, the KB-file is open for Black's rook. If White does not capture, his queen's diagonal is blocked.

- | | |
|---------------|-------|
| 13. P x P e p | R x P |
| 14. N-Q2 | B x B |
| 15. K x B | Q-K1 |
| 16. N-K4 | R-KB1 |
| 17. B-B4 | |



Position after 17. B-B4.

17. ... R x B

Faced with defending his QB2, Black did not like the passive alternatives. This move starts a combination that breaks up White's pawns.

- | | |
|-------------|--------|
| 18. P x R | Q-N3ch |
| 19. K-R1 | P-Q4 |
| 20. P x P | P x P |
| 21. QR-K1 | P x N |
| 22. R x P | N-KB3 |
| 23. Q-N3ch | K-B1 |
| 24. R-K6 | Q-N5 |
| 25. R-KN1 | Q-B6ch |
| 26. R-N2 | N-K5 |
| 27. Q-B2 | N x P |
| 28. R-K3 | Q-Q8ch |
| 29. Q x Q | N x Q |
| 30. R-Q3 | N-N7 |
| 31. R-QB3 | N-Q4 |
| 32. R-QN3 | N-B5 |
| 33. R-N6 | R-K1 |
| 34. P-KR4 | R-K5 |
| 35. R(3)-N3 | R-K2 |

"Instead of 35. ... R-K2, perhaps 35. ... R x B P would have been better, after which would follow 36. R x P, R x P ch; 37. K-N1, K-K1, and I believe Black is able to run for shelter on the Q-side." -- Stamm.

- | | |
|-------------|----------|
| 36. R(3)-N4 | R-B2 |
| 37. K-R2 | N x P |
| 38. R-QB6 | N-Q3 |
| 39. R-B3 | N-K7 |
| 40. R-K3 | R x P ch |
| 41. R-N2 | R x R ch |
| 42. K x R | N x P |
| 43. R-QB3 | P-B4 |
| 44. Resigns | |

With two knights and a pawn majority on both wings, Black has too much for White to combat.

(Stamm is not sure whether his 4. ... B x N is good, and he invites comments. The editor's opinion is that the move is premature and should be held in abeyance until Black has stronger reasons for making it. What do you think? Send your opinions to the editor, and we'll publish some of them.)

Tournaments

ALWAYS BRING STAUNTON CHESS SETS AND CLOCKS UNLESS OTHERWISE INDICATED.

NOV 30-DEC 28 LPCC WEDNESDAY NIGHT SWISS

5-SS, 40/2, Lincoln Park CC, 2525 N. Lincoln Ave., Chicago 60614. EF: \$16, under 19 \$13 (mail EF ackn.), if recd by 11/29; \$18 and \$15 at site. \$5 off to LPCC mems. \$\$: 75-50, B,C,D/ below each 30. REG: noon-7PM. RDS: 7:30 each Wed. ENT: LPCC, address above. Bring clocks.

DEC 1-22 PARK FOREST THURSDAY NIGHT SWISS

4-SS, Freedom Hall, 1776 Central Park Ave., Park Forrest 60466. 30/1. EF: \$4; under 18, over 55, women, \$3, if recd by 11/29; all \$1 more at site. \$\$: (based on 20 entries) 25, B,C,D/E each 15, more per entries. REG: 6:30-7:15PM. RDS: 7:30 each Thurs. ENT: James Condron, 119 W. Rose St., Glenwood, IL 60425. NS.

DEC 3-4 BUENAS NO CHESS

5-SS, Chicago Chess Center, 2666 N. Halsted, Chicago 60614. EF: \$15 if recd in advance, \$17 at site. In two sections. OPEN, 40/100. \$\$: (based on 25 entries) 100-50, A,B/ below each 50. RDS: 11-2:30-6:30, 11-3. BOOSTER, 40/90. \$\$: (based on 25 entries) 80-40, D,E each 50, unr 30. RDS: 11-2:30-6, 11-3. REG: 9:45-10:45AM. EF in cash. ENT: Chicago Chess Center, address above.

DEC 3-4 CMCC TWO-MAN TEAM TOURNAMENT

7-SS, 40/90, Chess Mates CC, 517 Dempster Ave., Evanston 60202. Limited to 15 teams. EF: \$25 per team, if recd by 11/18; \$30 at site. \$1 off to CMCC mems. \$\$: (based on 10 teams) 100-40, C 40, 1/2-yr CMCC mem. to top two boards among nonprize winners. REG: 9-9:45AM. RDS: 10-1:30-5, 10:30-2. ENT: Jim Bozzelli, address above.

HOW TO READ TOURNAMENT LISTS

CC: Chess Club.

EF: Entry fee.

ENT: Where to send entries. Include full name, address, USCF rating (state if unrated and estimate strength), USCF identification number and expiration date, name and date of tournament, entry fee and USCF dues if joining or renewing.

HR: Hotel rates. First figure is single rate, second is double-occupancy, etc.

LS: Limited smoking.

NS: No smoking.

Quad: Quadrangular. Players of similar strength are grouped in four-player (or larger) round-robin sections and play only within their section.

Rds: Schedule of games.

Reg: The hours during which players may register at the playing site.

RR: Round robin. Each player meets every other player.

SS: Swiss system. A pairing system in which, generally, players with similar scores are paired.

TL: Time limit.

Unr: Unrated.

USCF+EF: Some organizers give a reduced rate, combining USCF dues and the entry fee.

\$\$: Prizes guaranteed by the sponsor unconditionally. Sometimes prizes are based on the number of entries. Payment of the prize fund is the responsibility of the sponsor only, and not of the USCF.

(More tournaments on next page.)

DEC 4 H-F KNOCKOUT SWISS

3-SS in 8-man sections, 40/90, Dolphin Lake Park Bldg., 183rd & Rt. 54, Homewood 60430. EF: \$5. \$\$: (based on 8 entries per section) 25-10. REG: 10-10:45AM. RDS: 11-2-5. ENT: at site.

DEC 9-11 2ND ANNUAL JOSEPH H. BLACKBURN BIRTHDAY MEMORIAL

5-SS, 40/2, Lincoln Park CC, 2526 N. Lincoln Ave., Chicago 60614. In two sections: Section 1, open to 1799/below. Section 2, 1399/below. Both, EF: \$22, under 19 \$19 (mail EF ackn), if recd by 12/8; \$25, \$22 at site; \$5 off to LPCC mems. \$\$: 125-75-50 each section. C 50 section 1. E 50 section 2. Unr. may only win 3rd pl. prize. REG: noon-7PM. RDS: 7:30, 11-4, 11-4. ENT: LPCC, address above. ½-pt bye in rd 1 if req in adv. Bring clocks.

DEC 17 \$\$\$ SWISS

4-SS, 40/1, Chess Mates CC, 517 Dempster Ave., Evanston 60202. Limited to 30 entries. EF: \$17.50 (USCF + EF: \$31.50, jr. \$24.50) if recd by 12/3; all \$1 more at site; \$2.50 off to CMCC mems. \$\$: (based on 16 entries, \$70 guar.) 75-50, C, D/below each 30; 1-yr CMCC mem. to top unr. REG: 9-9:54AM, EF in cash. RDS: 10-1-4-7. ENT: Jim Bozzelli, address above.

DEC 18 ccc SWISS

4-SS, 40/1, Chess Mates CC, 517 Dempster Ave., Evanston 60202. Limited to 30 entries. EF: Cash, \$7.25 (UCSF + EF: \$21.25, jr. \$14.25) if recd by 12/4; all \$1 more at site; \$1 off to CMCC mems. \$\$: (based on 16 entries, \$25 guar.) 40, C, D/E each 17.50; ½-yr CMCC mem. to top unr. REG: 9-9:45AM. RDS: 10-1-4-7. ENT: Jim Bozzelli, address above.

Games of interest

RUY LOPEZ

C. Ward, ANL Knights - P. Greenspan, Motorola

- | | | | | | |
|-----------|-------|-----------|-------|--------------|----------|
| 1. P-K4 | P-K4 | 14. P-QN3 | QR-Q1 | 27. R-Q2 | R-K3 |
| 2. N-KB3 | N-QB3 | 15. P-QR3 | P-B4 | 28. R(1)-K1 | R-N3 |
| 3. B-N5 | P-Q3 | 16. P-QR4 | B-B3 | 29. N-Q5 | NxN |
| 4. P-Q4 | B-Q2 | 17. N-Q2 | P-QR3 | 30. RxN | R(1)-KB3 |
| 5. BxN | PxB | 18. P-B3 | B-Q2 | 31. BxP | BxB |
| 6. N-B3 | B-K2 | 19. N-B4 | B-K3 | 32. RxB | R-N6 |
| 7. PxP | PxP | 20. Q-K2 | BxN | 33. Q-B4 | P-B3 |
| 8. 0-0 | B-Q3 | 21. QxB | N-Q2 | 34. R-Q8ch | K-R2 |
| 9. B-N5 | N-B3 | 22. QR-Q1 | K-R1 | 35. RxKP | Q-N3 |
| 10. Q-Q3 | P-KR3 | 23. N-Q5 | P-B4 | 36. Q-N8ch | K-N3 |
| 11. B-K3 | 0-0 | 24. N-B3 | N-N3 | 37. R-Q7 | R-N4 |
| 12. P-KR3 | Q-B1 | 25. Q-K2 | P-KB5 | 38. RxNPch | K-R4 |
| 13. K-R2 | Q-N2 | 26. B-B2 | QR-K1 | 39. R(7)xRch | Resigns |