

Chicago Industrial Chess League BULLETIN

VOLUME 21 NUMBER 6

Need volunteers for phone match, committee, simul

There is a "strong possibility" that the CICL will hold a simultaneous chess exhibition at Fox Valley Shopping Mall in Aurora over the weekend of February 11 and 12.

All that's needed is five or six players and another five or six people to answer questions from spectators about the league and the exhibition.

(Continued on page 3.)

IN THIS ISSUE

Division reports	3
Match results	4
Ratings	5
Chess news	9
Grandmaster classics	11
Tournaments	17
Games of interest	10, 13, 18

Standings

<u>FAR WEST DIVISION</u>	<u>W</u>	<u>L</u>	<u>D</u>	<u>Pts.</u>
Argonne Pawns	3	1	0	17½
BTL Dragons	3	1	0	16½
WE Kingsmen	3	1	1	14
Argonne Rooks	2	1	2	19
Wheaton Crusaders	2	1	2	17
Argonne Bishops	2	3	0	9½
WE Montgomery	0	3	1	8
Amoco	0	4	0	6½

<u>EAST DIVISION</u>	<u>W</u>	<u>L</u>	<u>D</u>	<u>Pts.</u>
R.R. Donnelley	4	1	0	22½
Alumni Central	4	0	0	15½
IBT A	2	0	2	18
Sears Challengers	3	2	0	17½
Harza Engineering	3	1	0	16
FNB	1	2	1	13½
Sears #1	1	2	1	10½
GATX	1	2	0	8
IBT B	1	3	0	7
Metropolitan CC	0	3	0	½

<u>NEAR WEST DIVISION</u>	<u>W</u>	<u>L</u>	<u>D</u>	<u>Pts.</u>
WE Chargers	6	0	0	29½
BTL Royals	3	1	1	20½
Argonne Knights	3	1	1	16
Argonne Monarchs	2	2	1	15
CPC International	1	2	2	15
WesCom	2	4	0	13½
Zenith-Rauland	1	3	2	13½
Int'l Harvester	0	5	1	8½

<u>NORTH DIVISION</u>	<u>W</u>	<u>L</u>	<u>D</u>	<u>Pts.</u>
EXcaliburs	4	1	0	21½
Motorola	4	0	0	18
Kemper Insurance	2	3	1	19½
Signode	2	2	1	16½
Teletype	2	3	0	18½
Zenith-Glenview	1	1	2	11½
ITT #1	1	2	1	10
Sara Lee	1	2	0	6
Procon	1	1	0	3½
ITT #2	0	3	1	3

CICL directory

PRESIDENT

Greg Berry 739-7711 x5056
(Effective Feb. 6: 972-6160)
Bldg. 335
Argonne National Laboratory
9700 S. Cass Avenue
Argonne, IL 60439

SECRETARY

Charles Ward 739-7711 x3181
(Effective Feb. 6: 972-6196)
Bldg. 362
Argonne National Laboratory
9700 S. Cass Avenue
Argonne, IL 60439

TREASURER

Doug Anderson 690-3275
Room IH 2G417
Bell Telephone Laboratories
Warrenville and Naperville Roads
Naperville, IL 60540

RATING CHAIRMAN

Terry Andresen 875-7768
Sears, Roebuck and Co.
Dept. 704-4, 52-11
Sears Tower
Chicago, IL 60684

BULLETIN EDITOR

Dave Baurac 739-7711 x5220
(Effective Feb. 6: 972-5584)
7517 Country Lane South
Darien, IL 60559

USCF MEMBERSHIP

Charles Ward 739-7711 x3181
(Effective Feb. 6: 972-6196)
Bldg. 362
Argonne National Laboratory
9700 S. Cass Avenue
Argonne, IL 60439

EAST DIV. CHAIRMAN

Tom Gaffigan 732-3988
16th floor
#1 First National Bank
Chicago, IL 60670

NORTH DIV. CHAIRMAN

Lee Stensaker 724-6100 x2412
Signode Corp.
3650 W. Lake Avenue
Glenview, IL 60025

NEAR WEST DIV. CHAIRMAN

Mike Dee 420-4644
Bldg. 601
Amoco Research Center
Warrenville Road
Naperville, IL 60540

FAR WEST DIV. CHAIRMAN

Joe Brozovich 690-2898
Western Electric
Room 6C314
Bell Telephone Laboratories
Warrenville and Naperville Roads
Naperville, IL 60540

Deadlines for ratings, bulletin

The deadline for submissions to next month's bulletin -- games, chairmen's reports, match results, letters, etc. -- is February 15. Anything received after that date will appear in the following issue.

Deadline for division chairmen to get match results to Terry Andresen is the first of each month. This will give him time to include the results in the ratings list and get the list to the bulletin in time for the next issue.

Need volunteers . . .

(Continued from first page.)

Each volunteer will put in two to two and a half hours between 9:30 a.m. and 5:30 p.m., Saturday, Feb. 11, or between noon and 5 p.m., Sunday, Feb. 12. Playing volunteers will play up to 15 boards at one time.

Volunteers are also needed for two other league activities. Last month, Berry issued a call for volunteers for a telephone chess match with the New York Industrial Chess League. This month, he has asked for volunteers to serve on the nominating committee for next years officers.

Committee members will be in charge of canvassing league players to locate those interested in holding a league office. League officers -- president, secretary and treasurer -- are elected at the league's summer business

meeting.

Berry reports that only two people have volunteered to play in the telephone match and that no one has offered to organize it. "The response has been exceedingly poor," he said, "and if it doesn't improve quickly, the match will be cancelled." He needs an organizer by February 1.

Berry has done the initial organizing work for the match, but someone is needed to complete the job.

The match is scheduled for March 18 or 25; both are Saturdays. Each team will field 15 boards. Time control is to be 30 moves in 60 minutes and 20 moves per half hour after that.

Volunteers for any of these activities should call Greg Berry at 739-7711, ext. 5056. NOTE: Effective February 6 this number will change to 972-6160.

Division reports

FAR WEST DIVISION -- JOE BROZOVICH

At this writing, two round five matches have not been played: Amoco vs. Argonne Pawns and BTL vs. WE Montgomery. These two matches must be played as soon as possible to avoid delaying the whole schedule. Whenever a match cannot be played within the scheduled time, please notify me at once so I can do something about it.

In the matches that were played, the WE Kingsmen, aided by a brilliant two-piece sac by Gary Vondrasek, drew with the Argonne Rooks, and the Wheaton Crusaders beat the Argonne Bishops $4\frac{1}{2}$ to $1\frac{1}{2}$ with the help of two forfeits. The Crusaders are riding high with consecutive victories over the first-place BTL Dragons and the Bishops.

In round six, which should be completed by January 27, the Argonne Pawns host the Argonne Rooks, the BTL Dragons host the Western Electric Kingsmen, Western Electric Montgomery travels to the Argonne Bishops and Wheaton carries its crusade to Amoco.

EAST DIVISION -- TOM GAFFIGAN

Harris Trust has unfortunately elected to withdraw from the league. They no longer have sufficient players available to field a team. Under Rule II. F.2 of the Chicago Industrial Chess League, all of Harris's remaining matches will be treated as team forfeitures.

Harza and R.R. Donnelley seem to be the favorites for the trophies, each having won all their matches except those against Alumni Central. Illinois Bell A is also in the running, but has drawn with two of the weaker teams, Sears #1 and First National Bank. Harza was the latest team to pick on FNB, winning $3\frac{1}{2}$ to $2\frac{1}{2}$. At last word, Sears #1 and GATX were tied $2\frac{1}{2}$ to $2\frac{1}{2}$ with one game to play. GATX, based on their close game with Alumni Central, seems to be one of the division's improved teams. Two important matches coming up in rounds six and seven have R.R. Donnelley visiting FNB and Harza hosting IBT A.

Match results

HOW TO READ THESE THINGS

The home team is named first, followed by its score on the first six boards; then comes a comma, followed by the visiting teams and its score on the first six boards. Next is a colon, followed by the individual boards results with the home team player listed first. The symbol "+" should be read "beat." The symbol "-" is read "lost to." The symbol "=" is read "drew with." Any extra boards are reported after the first six, even though they are not included in the team score on the first line. Finally comes the date of the match or the round in which it was played.

NORTH DIVISION

Sara Lee 0, EXcaliburs 6: 1. N. Anderson - E. Buerger; 2. F. Szatmary - A. Mengelis; 3. G. Pullar - E. Gastelu; 4. B. Vickey - J. Brotsos; 5. D. Hanson - R. Micek; 6. B. Tatro - J. Galvin; 7. J. Ouper - P. Wong. 15 Nov 77.

Zenith-Glenview $1\frac{1}{2}$, Motorola $4\frac{1}{2}$: 1. R. Schulman - N. Goncharoff; 2. P. Miller = J. Neumark; 3. F. Conway - R. Ogasawara; 4. J. Zivku - J. Henning; 5. S. Ninkovic - P. Greenspan; 6. J. Weigand + D. Hernandez; 7. B. Vakil + L. Thompson. 8 Nov 77.

Kemper Insurance $3\frac{1}{2}$, Teletype $2\frac{1}{2}$: 1. G. Leong = F. Tegel; 2. J. Van Meer + J. Gilmer; 3. H. Barber + L. Aldort; 4. P. Bloedow + B. Carus; 5. K. Letraunik - J. Klemm; 6. T. Reynolds - R. Titus. 6 Dec 77.

EXcaliburs 6, IIT #2 0: 1. A. Mengelis + P. Rotton; 2. E. Gastelu + H. Posner; 3. D. Danes + G. Kaluciki; 4. J. Brotsos + forfeit; 5. B. Micek + forfeit; 6. E. Buerger + forfeit. 6 Dec 77.

EAST DIVISION

R.R. Donnelley 4, IBT B 2: 1. G. Dobbins - M Downs; 2. F. Leben + W. Vollmer; 3. H Swanson + M. Wedell; 4. R. Burk + J. Bennett; 5. J. Carlson - T. Billingsley; 6. A. MacKey + forfeit. 13 Dec 77.

Sears Challengers 6, Harris Trust 0: 1. R. Reyes + forfeit; 2. F. Kuch + forfeit; 3. W. Lems + H. Beaty; 4. L. Bess + X. Bishop; 5. T. Campbell + forfeit; 6. F. Ciba + forfeit. 20 Dec 77.

Harza 3½, First National Bank 2½: 1. M. Stevanovic = W. Leong; 2. J. Rigor - W. Nyman; 3. P. Kolenda - J. Gibbs; 4. R. Munoz + T. Gaffigan; 5. O. Bujwid + M. Smith; 6. J. Barron + R. Rauscher; 7. W. Empleo + W. Zimmer. 21 Dec 77.

Ratings

NEAR-WEST DIVISION

BIG TEN		
PLAYER	RATING	TEAM
WAKREN	2066	CHRGR
KUCERA	2013	MNRCS
DEKRY	1911	KNIGHT
DOBR	1761	CHRGR
KROHN	1767	MNRCS
PETERSON	1762	MNRCS
KARLOVICS	1702	KALND
KUMRU	1688	CHRGR
ANDERSON	1678	ROYLS
STAMM	1642	CHRGR

EAST DIVISION

BIG TEN		
PLAYER	RATING	TEAM
REYES	2221	SRSCH
CZERNIECKI	2186	ALUMN
DUNWORTH	1903	ALUMN
LATIMER	1870	SRS#1
NYMAN	1837	FNBK
GOLLA	1836	SRS#1
ANDRESEN	1824	SRS#1
SEDLOCK	1770	IBT-A
FABIJONAS	1754	ALUMN
DOBINS	1703	RRD

More ratings

NORTH DIVISION

BIG TEN		
PLAYER	RATING	TEAM
BUERGER	2054	EXCAL
TEGEL	2043	TTY
WONG	1963	EXCAL
MENGELIS	1893	EXCAL
ANDERSON	1879	SARAL
GONCHAROFF	1809	MTRLA
STYS	1807	PRCON
SCHULMAN	1776	ZENTH
KOZACKY	1773	PRCON
NEUMARK	1764	MTRLA

FAR-WEST DIVISION

BIG TEN		
PLAYER	RATING	TEAM
BENEDEK	2216	ROOKS
STREETS	2117	PAWNS
WILSON	2008	DRGNS
JACKSON	1980	B SHPS
MIHALLOVIC	1939	PAWNS
SCHROEDER	1870	AMOCO
HOUSE	1850	DRGNS
BROZOVICH	1745	KNGMN
WILSON	1738	ROOKS
BRENDA	1681	DRGNS

MOST IMPROVED PLAYER

AWARD CANDIDATES

PLAYER	INCR	TEAM	DLV
DESJARDINS	112	CPCIL	NW
LEBEN	074	RKD	EA
GILMER	050	TTY	NO
LEMS	050	SRSCH	EA
STAMM	047	CHRG	NW
SHIRKEY	046	B SHPS	FW
TAYLOR	037	RKD	EA
BARAN	036	RKD	EA
BROZOVICH	033	KNGMN	FW
BROTSOS	030	EXCAL	NO

NEW PLAYER

TEAM

BERG	ITI-1
CARUS	TTY
DAVIS	ITI-1
DUEÑAS	RALND
GOAFT	WESCM
KOPKA	ITI-1
LETRAUNIK	KEMPR
MOLITOR	WESCM
NOTTKE	WESCM
OUPER	SARAL
RAUSCHER	FBNBK
REYNOLDS	KEMPR
SMITH	FBNBK
TATRO	SARAL
VAKIL	ZENTH
WASIYAN	CHRG
ZIMMER	FBNBK

More ratings

PLAYER	TEAM	RATING	W-L-D	PLAYER	TEAM	RATING	W-L-D		
AGRAWA	T	ZENTH	1573	2 0 0	FABIJONAS	R	ALUMN	1754C	2 2 0
ALBRECHT	J	GATX	1423*	0 1 1	FAJFAR	DJ	AMUCO	1503*	0 1 2
ALDJRT	L	TTY	1630	1 1 1	FEDER	H	PAWNS	1534*	0 3 0
ALOJADO	M	CHRGR	1582	1 0 0	FISH	R	KNGMN	1521*	0 2 0
ANDERSON	D	ROYLS	1676	2 2 1	FROST	B	MNRCS	1177#	1 0 0
ANDERSON	N	SARAL	1879	1 2 0	GAFFIGAN	T	FNBK	1552*	2 1 0
ANDRESEN	T	SKS#1	1824	3 1 1	GAILUS	W	ALUMN	1387*	0 0 1
APPELMAN	E	ROUKS	1659	1 1 0	GIBBS		FNBK	1796#	3 0 0
BAKER	L	MNRCS	1486	2 1 0	GILMER	J	TTY	1550	2 1 0
BARAN	R	RRD	1348	1 0 0	GOLLA	K	SKS#1	1836	0 4 1
BARHORST	J	ROUKS	1463#	2 0 0	GONCHAROFF	N	MTRLA	1809C	2 0 2
BARON		HARZA	1372#	1 1 1	GREEN	D	PAWNS	1500	2 1 0
BAUKAC		BSHPS	1321#	1 2 0	GREEN	H	SARAL	1450*	2 1 0
BECK	N	ROUKS	1401	0 1 0	GREENSPAN	P	MTRLA	1537C	3 0 0
BENEDEK	R	ROUKS	2216	2 1 0	HARRINGER	R	KNGMN	1519	2 0 1
BERRY	G	KNIGHT	1911	1 2 1	HENNING	J	MTRLA	1662	4 0 0
BINGLE	J	MNRCS	1530	0 2 0	HERNANDEZ	D	MTRLA	1493	2 1 0
BLAZIE	J	KNGMN	1701*	1 0 0	HURWITZ	C	PAWNS	1493#	2 0 1
BKENDA	C	DRGNS	1681	1 0 0	HOSKINS	E	SIGND	1156#	2 0 1
BRUSIG	A	SIGND	1624	1 4 0	HOUSE	F	DRGNS	1850	1 0 2
BROTSOS	J	EXCAL	1691C	2 0 0	HUFF	S	SIGND	1429	1 3 0
BROZOVICH	J	KNGMN	1745	2 0 1	JACKSON	J	BSHPS	1980C	1 1 1
BUCHANAN	R	FNBK	1500	0 1 0	KARLOVICS	S	RALND	1702	0 2 1
BUELL	K	IBT-A	1659	1 2 0	KEIG		KNIGHT	1271#	1 2 0
BUERGER	E	EXCAL	2054	2 0 0	KEITH	G	IBT-A	1650	2 1 0
BUJWID		HARZA	1577#	1 2 0	KELLOGG	K	MNRCS	1491	2 1 1
BURBA	K	KNIGHT	1489	1 1 0	KINSELLA	G	KNIGHT	1501	2 2 0
BURK	R	RRD	1541	4 1 0	KLEIN, A		SIGND	1437*	1 1 0
BYCKOWSKI	M	ITT-1	1567	2 1 0	KLEIN, J		SIGND	1206	1 0 0
CAMPBELL	T	SRSCH	1475	0 1 0	KLEMM	J	TTY	1497	3 2 0
CARLSON	J	RRD	1534*	2 1 0	KLINE		CRS DR	1099#	1 2 0
CHAN		SRS#1	1753*	3 1 1	KLING	R	RALND	1401*	1 3 0
CIBA	F	SRSCH	1476	1 2 0	KOLENDA		HARZA	1751#	1 1 0
COMROE	R	MTRLA	1160#	1 0 0	KOZACKY	J	PKCON	1773	0 2 0
CONWAY	F	ZENTH	1545*	1 2 0	KRUHN	V	MNRCS	1767C	1 0 0
COUVEK	K	BSHPS	1323#	0 1 0	KUCERA	D	MNRCS	2013	1 1 0
COX	M	ALUMN	1676#	2 0 1	KUCH	F	SRSCH	1678*	2 2 0
CZENIECKI		ALUMN	2186	2 1 1	KUMRO	D	CHRGR	1666C	2 2 1
DALEY	J	BSHPS	1355	0 1 1	LANGE	H	RALND	1177#	2 2 0
DARGIS	R	ALUMN	1515	2 2 0	LATIMER	E	SKS#1	1870	2 2 1
DASSIE	K	ZENTH	1526*	1 0 0	LAUTH	R	IBT-A	1406C	2 1 0
DAVIDSON		CKSDK	1563#	1 2 0	LEBEN	F	RRD	1672	5 0 0
DAVIS	J	FNBK	1499*	0 1 0	LEE	R	WEMNT	1473*	1 1 0
DECMAN	S	ROUKS	1499	2 0 0	LEE	RJ	AMOCO	1623	0 1 1
DEE	M	AMOCO	1372	1 1 0	LEMS	B	SRSCH	1542	2 0 0
DESJARDINS	J	CPCIL	1525	3 1 0	LEONG		FNBK	1959*	2 1 1
DEVER	D	ROUKS	1515	0 2 1	LOGELIN	W	IBT-A	1504	3 0 0
DUBBINS	G	RRD	1703C	3 2 0	MACKAY	A	RRD	1456*	1 0 1
DOB R	K	CHRGR	1751C	5 0 0	MCANANY	J	ITT-1	1421	2 1 0
DOWNS	M	IBT-B	1437#	2 2 0	MENGELIS	A	EXCAL	1693	2 0 0
DRAGEL	G	MNRCS	1341	0 1 0	MEYER	JR	PAWNS	1326#	1 1 0
DUNWORTH	J	ALUMN	1903	3 1 0	MICEK	R	EXCAL	1644C	2 0 0
DYKSTRA	D	GATX	1178#	0 1 0	MIHAILOVIC	S	PAWNS	1939C	2 0 0
ELLIOTT	W	KNGMN	1666C	0 0 3	MILLER	P	ZENTH	1579	0 0 1
EKTEL	M	HARIS	1355*	1 1 0	MORTON	B	SRS#1	1617*	1 2 2

More ratings

PLAYER	TEAM	RATING	W-L-D	PLAYER	TEAM	RATING	W-L-D
MOTYCKA	I HARV	1268#	0 3 0	THOMAS	J KNGMN	1400	0 1 1
MUDDÉ	J CPCIL	1318*	0 5 0	THOMPSON	L BSHPS	1191#	0 1 0
MUIR	L AMOCO	1023	0 0 1	TITUS	R TTY	1072*	1 2 0
MUNOZ	HARZA	1003*	3 0 0	TOMLANSON	H RALND	1332	1 4 0
MYSLINSKI	DRGNS	1486*	1 0 0	TUMALAD	L PRCON	1478*	1 1 0
NELSON	KNGHT	1542*	3 1 0	URBAS	B CPCIL	1492*	4 1 0
NELSON	S FNSNK	1454#	1 1 0	VANSCOTT	J FNSNK	1497*	1 1 0
NEUMAKK	J MTR LA	1704C	2 0 2	VICKEY	B SAKAL	1253#	0 2 1
NYMAN	W FNSNK	1837	3 1 0	VIVIAN	G GATX	1390	0 2 1
DELRIICH	R ITT-1	1714	1 1 1	WALSH	W PAWNS	1047	2 1 0
OGASAWARA	R MTR LA	1024C	1 2 0	WARD	C KNGHT	1037C	2 2 0
PARKER	L WEMNT	1970*	1 0 2	WARREN	J CHRGR	2066C	4 0 1
PASTUKCZAK	R M SIGND	1301	2 1 0	WESTON	J AMOCO	1459*	0 1 0
PETERSUN	M MNRCS	1702	1 1 2	WESTON	P WEMNT	1301	1 2 0
PFEFFER	D DRGNS	1318*	2 0 0	WETTERSTEN	H CHRGR	1389	0 1 1
PUDAITE	CRS DR	1354#	1 0 0	WILSON	A METCL	1599	0 2 1
PULLAR	SAKAL	1130#	0 2 0	WILSON	D DRGNS	2000C	0 1 1
REID	ROYLS	1400#	4 1 0	WILSON	R ROCKS	1758	1 2 0
REINHARDT	V AMOCO	1255#	0 2 0	WULLENBERG	K IBT-A	1073	2 0 1
RENNEK	T PAWNS	1493	0 1 0	WONG	P EXCAL	1963	2 0 0
REYES	R SRSCH	2221	3 1 0	YOUNG	C KNGHT	1910*	0 2 1
RISTOFF	I HARV	1347*	1 2 1	YUKNAVECH	R WEMNT	1527*	1 0 1
ROELKE	J RALND	1202	0 3 0	ZIMMER	J GATX	1062#	0 0 1
ROLEWICZ	P SRS#1	1509#	1 1 0				
ROSEN	J DRGNS	1566	3 0 0	# 5-9 GAMES			
RÜTHSCHILD	J GATX	1340*	1 1 0	* 10-24 GAMES			
SAIFULLAH	M PRCON	1712*	0 2 0	C CENTURY CLUB MEMBER			
SANCHEZ	RALND	1753*	3 0 1				
SATTERLEE	I HARV	1002*	0 2 1				
SCHROEDER	M AMOCO	1070	0 1 0				
SCHULMAN	R ZENTH	1776	2 1 0				
SCHWAKTZ	S SKS#1	1020C	0 0 2				
SEDLÖCK	E IBT-A	1770	2 1 0				
SHAFF	R KNGMN	1530	2 0 1				
SHIRKEY	L BSHPS	1058	1 0 1				
SIVULA	B SAKAL	1442	1 1 0				
SOBUN	J DRGNS	1624	1 1 0				
STAMM	V CHRGR	1042	5 0 0				
STEJSKAL	J CPCIL	1404	2 2 0				
STENSAKER	L SIGND	1470	2 2 0				
STEPHAN	W ALUMN	1829*	3 1 0				
STEVANOVIC	HARZA	2103*	2 0 2				
STONE	SKSCH	1482#	1 2 1				
STREETS	D PAWNS	2117	2 0 1				
STUHLBARG	D PRCON	1448*	1 1 0				
STYS	A PRCON	1807	0 1 0				
SUE	TTY	1452#	2 1 0				
SWANSON	H KRÜ	1000	3 2 0				
SWIDERSKI	M CHRGR	1496	2 0 1				
SZATMARY	F SAKAL	1332	1 1 0				
TACON	H IBT-A	1047	0 0 1				
TANG	R PRCON	1047#	0 0 1				
TAYLOR	E RRD	1310*	2 0 0				
TEGEL	F TTY	2043	1 0 2				
TEWARI	K MNRCS	1507*	1 3 0				

We need games

Yes, the Chicago Industrial Chess League Bulletin needs games -- copies of your league games to publish. Instructive games and entertaining games. Close games where you systematically squeezed victory out of an infinitesimal advantage, and wild games where you stole victory from the jaws of defeat because your opponent played like a patzer.

We need annotated games and unannotated games, but we will publish the annotated ones first. Submissions do not need to be typewritten, just legible. And if you annotate a game, please tell us who you are so we can give you credit for your notes.

Send submissions to: David Bau-
rac, Editor, CIGL Bulletin, 7517 Coun-
try Lane South, Darien, Ill. 60559.

CHESS NEWS

Candidates Matches

Soviet defector Victor Korchnoi held off a strong rally by former world champion Boris Spassky to win their final candidates match by a score of 10½ to 7½.

Down by five points after 10 games, Spassky won games 11 through 14 to draw within one point, but Korchnoi regrouped, drew games 15 and 16, and then won the final two to take the match.

Korchnoi has earned the right to meet Anatoly Karpov of the USSR next summer in a match for the world championship.

The match is threatened, however, because Korchnoi's wife and teenage son were left in Russia when he defected to the West in 1976. Korchnoi reportedly may insist that they be allowed to leave the USSR as a condition of the match.

If the match is held, there will be no limit on the number of games that could be played. The winner will be the first player to win six games outright; draws will not count.

Korchnoi has said he is determined to meet and defeat Karpov as a political opponent.

During the match with Spassky, a dispute arose over Spassky's conduct during the games and threatened the progress of the match for a time.

At issue was Spassky's habit, begun in game 10, of leaving the board and sitting in a private booth while contemplating his moves on the demonstration board set up for spectators.

After Spassky's first victory in game 11, Korchnoi protested, demanding that the demonstration board be removed. When the referee sided with Korchnoi, Spassky protested and failed to

appear for the start of game 12.

Rather than award Korchnoi a forfeit as required by a strict interpretation of the match rules, the referee consulted with Korchnoi, who agreed to postpone the game pending discussions with Spassky and his seconds.

At last a compromise was reached. Spassky was permitted to study the demonstration board between moves, but the private booth was removed so he was in full view of Korchnoi and the referees at all times.

Korchnoi's complaint about noise from the gallery also resulted in paid spectators being forbidden to sit in the first 10 rows of seats.

None of this helped Korchnoi, however, as he lost the next three games. Finally, he pulled himself together, drew games 15 and 16, and wrapped up the match by winning games 17 and 18.

After the match, Korchnoi said he was subjected to hypnotic waves in an attempt to make him lose the match. He said the waves were coming from Spassky or someone in the gallery.

The waves, he said, explained why Spassky, at various stages of the match, appeared at the board wearing sun glasses, a sunshade or underwater goggles. Korchnoi felt he was in danger when Spassky left the board between moves.

QUEEN'S GAMBIT DECLINED

Korchnoi -- Spassky
11th match game

- | | |
|----------|-------|
| 1. P-QB4 | P-K3 |
| 2. N-QB3 | P-Q4 |
| 3. P-Q4 | B-K2 |
| 4. N-B3 | N-KB3 |

Candidates ...

5.	B-N5	P-KP3	20.	PxP	PxP
6.	B-R4	O-O	21.	Q-N6	R-N2
7.	P-K3	P-QN3	22.	QxQ	RxQ
8.	R-B1	B-N2	23.	N-K1	R-N3
9.	BxN	BxB	24.	N-Q3	KR-N1
10.	PxP	PxP	25.	P-R3	B-N2
11.	P-QN4	P-B3	26.	N-K5	BxN
12.	B-Q3	F-K1	27.	PxB	R-N5
13.	O-O	N-Q2	28.	P-B3	B-R3
14.	Q-N3	N-B1	29.	R-Q2	B-B5
15.	KR-Q1	R-B1	30.	P-B4	N-B4
16.	B-N1	N-K3	31.	R-Q4	N-Q6
17.	P-QR4	B-R1	32.	R-Q1	N-N7
18.	B-R2	R-B2	33.	R-QB1	P-QB4
19.	Q-N1	P-QR4	34.	RxP	BxR
			35.	BxB	P-B5
			36.	N-K4	NxP
			37.	Resigns	

Games of interest

SICILIAN DEFENSE

E. Latimer, Sears #1 -- F. Leben, R.R. Donnelley

1.	P-K4	P-QB4	23.	K-R1	O-O	45.	Q-N3	K-N2
2.	N-KB3	N-QB3	24.	Q-R4	Q-K2	46.	R-N1	R-B5
3.	P-Q4	PxP	25.	N-K4	N-Q4	47.	P-R3	Q-Q7
4.	NxP	P-Q3	26.	Q-N3	N-K6	48.	R-N2	B-K1
5.	N-QB3	P-QP3	27.	R-QB1	N-B5	49.	QxR	Q-B8ch
6.	B-QB4	P-K3	28.	R-Q3	NxNP	50.	K-R2	QxR
7.	B-N3	N-KB3	29.	R-Q6	P-QR4	51.	P-B4	Q-B6
8.	B-K3	B-K2	30.	R-N6	B-B5	52.	Q-K4	B-B2
9.	P-KB3	N-QR4	31.	N(2)-B3	P-N5	53.	P-R4	Q-Q7
10.	O-O	B-Q2	32.	PxP	PxP	54.	K-N3	K-R3
11.	Q-Q2	R-B1	33.	N-B6ch	K-R1	55.	Q-K7	QxQBP
12.	QR-Q1	P-QN4	34.	N(3)-K4	PxN	56.	QxQNP	K-R4
13.	P-QR3	Q-B2	35.	NxP	B-Q6	57.	Q-R5ch	P-B4
14.	Q-B2	N-B5	36.	N-Q5	Q-K1	58.	Q-Q8	Q-B6ch
15.	BxN	QxB	37.	N-B6	Q-K2	59.	K-B2	Q-N2
16.	N(4)-K2	P-K4	38.	N-Q5	Q-K1	60.	P-N3	Q-N7ch
17.	B-N6	B-K3	39.	N-B6	Q-Q1	61.	K-N1	Q-B8ch
18.	R-Q2	P-Q4	40.	QxP	QxR	62.	K-R2	K-N5
19.	PxP	BxP	41.	N-Q7ch	P-B3	63.	Q-Q3	B-B5
20.	R(1)-Q1	B-K3	42.	QxN	Q-Q3	64.	Q-Q4	Q-B7ch
21.	Q-N3	B-B4ch	43.	NxR	B-N4	65.	K-N1	K-R6
22.	BxB	QxBch	44.	NxP	KxN	66.	Resigns	

Grandmaster Classics

Emanuel Lasker (1868-1941) became world champion by defeating Wilhelm Steinitz 10 to 5 with 4 draws in 1894. He held the title for 27 years, longer than any champion before or since. Yet there is little of specific value to learn from his games.

His chess writings smack more of philosophy than chess technique. Time and again, he maneuvered into objectively lost positions, yet emerged victorious. Lasker's enigmatic style was the result of close study of his opponent's style. He often played moves that were objectively incorrect, but which steered the game into a position disagreeable to his opponent.

All Lasker asked of an opening was a decent position that was more or less equal. Then he would aim for a complicated middle game in which his opponent was uncomfortable, but in which Lasker's genius could show itself. He saw a chess game as a fight, and he strove to turn each game into a battle of nerves in which his opponent was ill prepared.

The following game demonstrates Lasker's skill at creating and handling an extremely complicated position.

SICILIAN DEFENSE Lasker -- Napier Cambridge Springs 1904

1. P-K4 P-QB4
 2. N-QB3 N-QB3
 3. N-B3 P-KN3
- The Dragon Variation.
4. P-Q4 PxP
 5. NxP B-N2
 6. B-K3 P-Q3
 7. P-KR3

"The usual and more natural move here is 7. B-K2; the move in the text is the beginning of a pawn attack on the K-side which Lasker has more than once carried out in games of this opening." -- Reti. Tartakower and du Mont suggest that this move of "the artificial P-KB3" would have to be played eventually to stop Black's threat of ... N-KN5 in reply to White's eventually Q-Q2. Such was the state of chess knowledge in 1932, when Reti wrote, and in 1952, when Tartakower and du Mont were writing.

Today 7. P-KB3! is so feared that only specialists play the Dragon Vari-

ation. 7. P-KB3 initiates the well known Yugoslav Attack. White completes his development with Q-Q2, 0-0-0, possibly B-QB4, and then launches a K-side pawn storm with P-KR4 or P-KN4.

Lasker's move is somewhat premature in view of the still fluid center. Reti suggests the move may have been played for psychological reasons. This would be consistent with Lasker's style.

7. ... N-B3
8. P-KN4

The black knight on f6 supports the freeing move ... P-Q4. Lasker plans to drive the N from its square.

8. ... 0-0

The best way to answer a premature flank attack is to counter-attack in the center. The text prepares ... P-Q4 which, if played immediately could be answered by 9. B-QN5.

9. P-N5 N-K1

9. ... N-Q2 gives Black better chances of equalizing: 10. P-KR4, Q-R4; 11. P-B4, NxN; 12. BxN, P-K4. (Tartakower-du Mont).

10. P-KR4 N-B2

11. P-B4

So he can answer 11. ... P-Q4 by

12. P-K5.

11. ... P-K4

12. KN-K2 P-Q4

Sacrificing a pawn in an attempt to force an attack through the center.

Better is 12. ... B-N5.

13. KPxP

If 13. NxP, PxP!

13. ... N-Q5!

14. NxN

After 14. BxN, PxB; 15. NxP, NxP, White's position is broken and his K exposed.

14. ... NxP

15. N-B5!

Not 15. NxN, PxN!

15. ... NxN

16. QxQ RxQ

17. N-K7ch

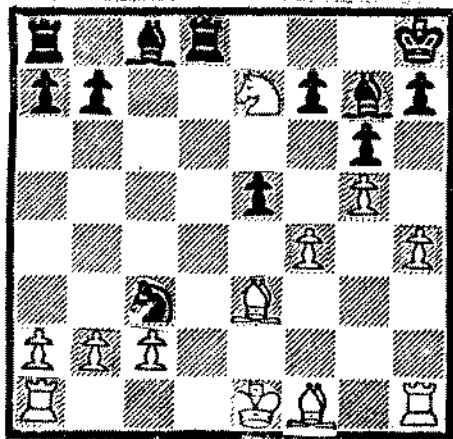
If 17. NxB, N-Q4; 18. 0-0-0, B-N5, and Black regains his piece with a fine position. 17. PxN, BxN is clearly bad for White.

17. ... K-R1!

White still cannot win material.

If 18. PxN, PxP!; 19. B-Q4, BxB; 20. PxB, R-K1 and Black is a pawn to the good. If 18. NxB, N-Q4! and the Nc8 cannot escape.

After 17. ... K-B1?; 18. B-B5, N-K5; 19. B-QP3 with a strong game for White.



18. P-R5!

White is superior on the K-side, so that is where Lasker operates. He now threatens 19. PxNP, BPxP; 20. NxPch, K-N1; 21. B-B4ch, N-Q4; 22. BxNch, RxB; 23. N-N6ch.

18. ... R-K1!

19. B-B5

Maintaining the threat.

19. ... PxBP

The more obvious 19. ... PxBP gives White a dangerous advantage after 20. PxP, BPxP; 21. B-B4, threatening B-B7. After the text, followed by 20. PxN, B-B1; 21. B-N5, RxB; 22. BxR, BxB, Black's two good Bishop's and his opponents torn position give him a good game despite being down the exchange.

20. B-B4 PxB!

Black presses his own attack. Defensive play is no good: 20. ... B-K3; 21. BxB, PxB; 22. PxN, B-B1; 23. RxP, BxN; 24. BxB, RxB; 25. PxP followed by 26. 0-0-0 gives White the better endgame. (Reti)

After 20. ... B-K3?, Euwe suggests 21. BxB, PxB; 22. PxN, B-B1!; 23. B-Q6. Then if 23. ... BxN; 24. BxPch, K-N1; 25. RxP. And if 23. ... PxP; 24. B-K5ch, B-N2; 25. B-B6!

21. BxBP

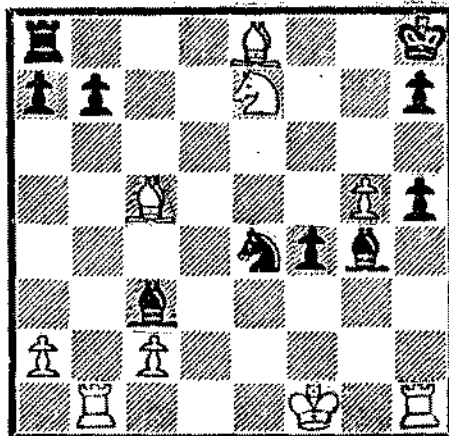
At this point, Lasker had only three minutes to reach move 30.

21. ... N-K5

22. BxR BxP

23. QR-N1 B-B6ch

24. K-B1 B-KN5!



Position after 24. ... B-KN5!

He is down a rook, but Black still has good chances. White's K is badly exposed, and Black has two pawns plus and threatens ... RxB, ... NxB, ... N-Q7ch and ... N-N6ch.

25. BxKRP!!

Lasker gives back the rook and continues his attack against the Black K.

25. ... BxB

There is nothing better. If 25. ... N-N6ch; 26. K-B2, BxB; 27. RxB leads to the game. If 26. ... NxB; 27. R-R4!

26. RxB N-N6ch

27. K-N2 NxR

28. RxB

Material is even, but White's

pieces are better placed.

28. ... P-R4

29. R-N3 B-N2

30. R-KR3

Time control! The move renews the attack along the KR-file.

30. ... N-N6

31. K-B3

Winning the pawn. 31. ... B-K4 or

31. ... R-KB1 lose to 32. N-N6ch.

31. ... R-R3

32. KxP N-K7ch

33. K-B5 N-B6

34. P-R3 N-R5

35. B-K3 Resigns

There is no defense to 36. P-N6.

Notes to this game were compiled from M. Euwe's The Development of Chess Style, R. Reti's Masters of the Chessboard and S. Tartakower and J. du Mont's 500 Master Games of Chess.

Games of interest

RUY LOPEZ

C. Ward, Argonne Knights -- W. Ristoff, Int'l Harvester

Notes by the winner.

1. P-K4 P-K4

2. N-KB3 N-QB3

3. B-N5 N-B3

4. O-O B-B4

This move puts the bishop on a diagonal threatening White's KBP, but removes the bishop from the K-side defense. I decided to watch for an opportunity to attack Black's king.

5. P-B3

Preparing P-Q4. If 5. ... NxP; 6. P-Q4, B-N3 (6. ... PxP?; 7. R-K1); 7. BxN, QPxP; 8. NxP regains the pawn.

5. ... P-QR3

The normal sequence of moves here is 5. ... B-N3; 6. P-Q4, O-O; 7. R-K1, P-Q3.

6. B-R4 P-QN4

7. B-B2 O-O?

Now that White's KP is defended, 8. P-Q4 will threaten to win Black's KP.

Thus, 7. ... B-N3; 8. P-Q4, P-Q3, or even 7. ... P-Q3 is required to hold the center and allow natural development of the QB along the QB1-KR6 diagonal.

8. P-Q4

(8. NxP!, NxN; 9. P-Q4. If 9. ... B-Q3?; 10. PxN, BxP; 11. P-KB4, wins more material. -- Ed.)

8. ... B-Q3

This move blocks the QP and thus the QB, loses a tempo and turns the KB into a tall pawn. The alternative 8. ... PxP; 9. PxP, B-N3 gives White a dominating pawn center, after which 10. P-K5, attacking PKR7, seems hard to answer. Black's later troubles stem from his failure to play ... P-Q3 at move seven.

9. R-K1 B-N2

10. B-N5

This seemed the most aggressive

place for the bishop. If it eventually maneuvered to KN3, it could attack Black's KP which only with difficulty could be defended by ... P-Q3.

10. ... P-R3

11. B-R4 R-K1

12. P-KR3

This deprives Black's KN of KN4 and opens an escape square on KR2 for the QB is the event of ... P-KN4 and ... N-KR4. This square could also prove useful in getting a white N to KN4.

12. ... N-QR4

13. QN-Q2

Necessary to protect the KP in case of ... Pxp. The move also discourages ... N-B5. 13. P-Q5 also protects the KP, but then ... P-B3 could threaten White's center control. I wanted to postpone P-Q5 at least until Black played ... P-QB4, and in the meantime develop the QN.

13. ... P-B4

14. P-Q5 B-N1?

This move locks Black's QR into near immobility. A better plan would perhaps be ... B-KB1, ... P-Q3, followed by ... P-KN3 and ... B-N2, aiding in the defense of Black's K-side and freeing his Q and Rs to support a Q-side pawn advance.

15. N-B1 Q-N3

16. P-QN3

This neutralizes Black's Q-side pawns, since 16. ... P-N5; 17. P-QB4 is harmless, and 16. ... P-B5; 17. P-QN4 wins the N. The text also denies White's QB4 to the black N. Now Black's QR, QN and both bishops have no useful moves.

16. ... N-R4

17. N-K3

Inhibiting ... P-KB4 and moving the N closer to the center.

17. ... Q-N3

18. N-B5

I had not anticipated Black's 17th move which opened up "cheapo" mate threats via ... N-KB5, or ... P-Q3 and ... B-B1. Also ... P-KB4 appeared to have freeing possibilities which were prevented by my 17th move. With so many Black pieces immobile on the Q-

side, good attacking chances were developing if I could get my pieces into position.

18. ... K-B1

Black was worried about N-K7, winning the exchange, but 18. ... N-KB5 would save it by virtue of the mate threat.

19. Q-Q2

At this point, I was having trouble seeing how to proceed, and my clock showed only 25 minutes left for the next 27 moves. I decided on this move because the Q simultaneously threatens the unguarded NQR5, protects the troublesome KB4 and sets up the distant possibility of a N-sacrifice on KR6. I intended to meet 19. ... N-KB5 by 20. B-N3, preventing the loss of the KRP.

19. ... P-Q3

20. K-R2

Now a Black N on KB4 can be driven away permanently by P-N3.

20. ... N-KB5

21. B-N3

This is not the best defense. As later moves will show, it is too passive. Better would be 20. R-K1. Fortunately, Black lets me take the move back.

21. ... N-R4

22. B-R4 B-B2

This bishop has made four moves and is still on a bad square.

23. R-KN1 QR-QB1

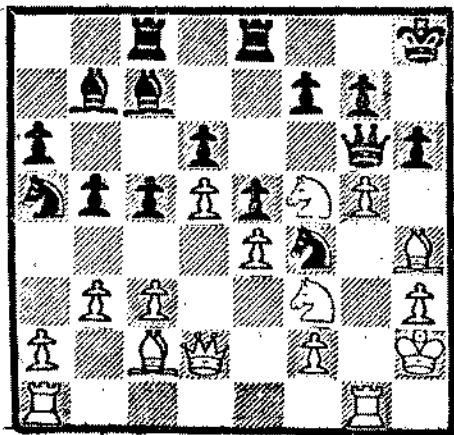
24. P-KN4

Now, at last, I have the right idea -- I can push the KNP down Black's throat and work up an attack by means of threats against the Q, which now has only one flight square.

24. ... N-B5

25. P-N5

Safer but slower would be 25. B-N3, winning the KP, putting my Q on a good attacking square and making possible a future P-K5 to open my KB's diagonal. The test, however, allows the opening of the KN-file for the Rs, with the promise of a mating attack. The price, however, is a N-sacrifice after 25. ... Q-R4; 26. Pxp, QxN (threaten-



Position after 25. P-N5.

ing mate). Nevertheless, after 27. R-N3, Q-R4; 28. QR-KN1 White has a won game, since 28. ... PxP; 29. R-N8 mates while 28. ... N-N3; 29. R-N5, Q-B6; 30. P-R7 and 28. ... P-N3; 29. R-N5, Q-B6; 30. R(1)-N3 followed by P-R7 both win. If 28. ... K-N1, to stop P-R7, White plays 29. R-N5, Q-B6; 30. R(1)-N3, Q-B7; 31. RxBch, K-R1; 32. B-N6! In this line, after 25. ... Q-R4; 26. PxP, if Black chooses 26. ... P-N3, 27. N-N5 seems strong because of 27. ... PxN; 28. N-R7 mate and White's threat of 28. B-Q1, winning the Q. There is also the threat of 28. N-R7 ch, K-N1; 29. N-B6 ch, winning the Q

via the fork. I didn't have time during the game to work out all these lines, but the open file looked so strong that it seemed clearly worth the knight. In the game, however, Black declines the sacrifice in favor of keeping the K-side lines closed.

25. ... P-R4
26. B-N3 QR-Q1

After three and a half hours, not a single piece of pawn had been captured. Now White wins the black KP.

27. BxN

Expecting the reply 27. ... PxE, I planned to drive my opponent's Q from its blockading square by 28. N(3)-R4, Q-R2. Then would come 29. P-N6, PxP; 30. NxBch, followed by 31. QxP, putting White in the driver's seat. If 29. ... Q-N1; 30. PxP, QxP; 31. RxB, continuing as in the game. After long thought, however, my opponent decided not to recapture and promptly lost first a rook and then the game.

27. ... P-B3??
28. PxP QxP
29. B-N5 Q-B2
30. BxR RxB
31. RxB QxR
32. NxQ KxN
33. R-KN1ch K-B2
34. Q-R6 R-KB1
35. Q-K6 mate

GIUOCO PIANO

G. Vondrasek, WE Kingsmen -- J. Barhorst, Argonne Rooks

Notes by the winner.

- | | |
|----------|-------|
| 1. P-K4 | P-K4 |
| 2. N-KB3 | N-QB3 |
| 3. B-B4 | |

White can play the Piano with 3. B-B4 or the Ruy Lopez with #. B-N5.

- | | |
|--------|------|
| 3. ... | B-B4 |
|--------|------|

Black can lead the game into the Two Knights Defense with 3. ... N-B3 or continue the Piano with 3. ... B-B4.

- | | |
|---------|------|
| 4. P-B3 | N-B3 |
|---------|------|

- | | |
|---------|-------|
| 5. P-Q4 | PxP |
| 6. PxP | B-N5+ |
| 7. N-B3 | NxKP |

According to I.A. Horowitz's Chess Openings: Theory and Practice, Black must take the pawn of get into great difficulties.

- | | |
|--------|-----|
| 8. O-O | NxN |
|--------|-----|

The Greco variation. Better for Black is 8. ... BxN.

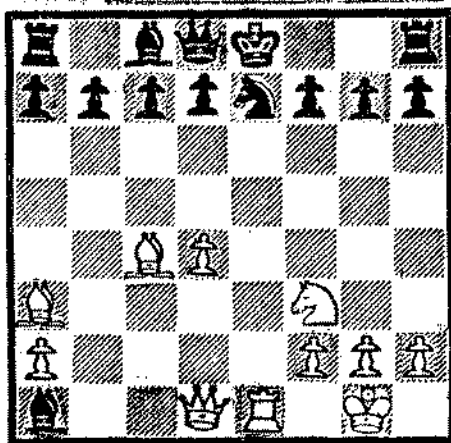
- | | |
|----------|-----|
| 9. PxN | BxP |
| 10. B-R3 | |

I decided to forsake material and go for the attack. So far the game follows an illustrated game in Horowitz in which White wins convincingly.

10. ... BxR??

According to Horowitz, this move loses for Black. Better is 10. ... P-Q4, but Black still has a bad game: e.g., 11. B-N5, BxR; 12. R-K1+, B-K3; 13. Q-R4 with a winning attack.

11. R-K1+ N-K2



Position after 11. ... N-K2.

12. BxP+

For my first 11 moves, I used only one minute on my clock because I have studied this line extensively. But at this point the book leaves off, saying only, "White has a winning attack." My task was to find the win. I took 40 minutes to decide between 12. BxN and 12. BxP+. When I got home, I could not find any variation of either moves that does not win.

After 12. BxN, QxB; 13. RxQ+, KxR; 14. Q-K2+, K-Q1; 15. N-N5, P-QB3, Black avoids an immediate mate, but

White should still win. If 14. ... K-B1; 15. N-N5, P-Q3; 16. BxP, B-Q2; 17. B-Q6, B-K1 (If 17. ... BxB; 18. QxB with mate to follow.); 18. B-Q7 should win for White. If the black K moves out to the third rank on move 14, the variations would follow a course similar to the game.

12. ... KxB

12. ... K-B1 may be best. After 13. Q-K2 Black has many problems.

13. N-N5+ K-N3

Further analysis while doing this annotation indicates that 13. ... K-K1 followed by ... P-Q3 as soon as possible could save Black's game. The text move seals the king's fate.

14. BxN

I almost played 14. Q-Q3+, but the reply ... N-B4 presented too many problems. The text captures, attacks and protects all at the same time.

14. ... Q-N1

15. Q-Q3+ K-R3

After 15. ... K-R4?; 16. R-K5, BxP; 17. N-B7+, BxR; 18. Q-B5+, P-N4; 19. P-N4+, K-R5; 20. BxP+ leads to mate.

16. R-K3?

A wasted move and the weakest of White's game. I overlooked the reply.

16. ... P-Q3

17. R-K4

Fortunately, I had more than one move in hand.

17. ... P-KN3

I expected this several moves ago.

18. B-B6

A pretty move which cuts off the king's retreat.

18. ... B-B4

A useless move; I don't need my Q.

19. R-R4 mate

QUEEN'S GAMBIT DECLINED

E. Buerger -- N. Anderson

- | | | | | | |
|----------|-------|---------|-------|-----------|---------|
| 1. P-Q4 | P-K3 | 6. P-K3 | O-O | 11. R-B1 | R-K1 |
| 2. P-QB4 | N-KB3 | 7. PxpP | PxpP | 12. B-N3 | B-Q3 |
| 3. N-QB3 | P-Q4 | 8. B-Q3 | P-KR3 | 13. N-QN5 | Resigns |
| 4. B-KN5 | B-K2 | 9. B-R4 | P-QB3 | | |
| 5. N-KB3 | QN-Q2 | 10. O-O | Q-B2 | | |

Tournaments

ALWAYS BRING STAUNTON CHESS SETS AND CLOCKS UNLESS OTHERWISE INDICATED.

FEB 3-5 NORTHERN ILLINOIS AMATEUR

40/2, 5-SS, Chicago Chess Club,
25 N. Franklin St., 4th flr., Chicago
60606. Open to under 2200. EF: \$10
if recd by 2/1, \$11 at site. \$\$:
(based on 35 entries) 100-60-40,A,B,C,
D each 35, trophy to top unr if 3 or
more. RDS: 7, 10-3, 10-3. REG: 5-6:30
PM. ENT: Dennis Keen, address above.

FEB 5 GROUNDHOG SWISS

30/1, 3-SS in sections of 8, Univ
of Chicago HS, 5840 S. Kerwood, Chica-
go. EF: \$3.50 if recd by 2/3, \$5 la-
ter, 50¢ off to IGA mems. \$\$: 12-8
each section. RDS: 9:30-12-2:30. REG:
8:45-9:15AM. ENT: Joan Winston, 1450
E. 55th Place, 830-S, Chicago 60637.
NS.

FEB 5 HYDE PARK OPEN & SCHOLASTIC

4-SS, Univ. of Chicago HS, 5840
S. Kerwood, Chicago. ENT: Harold Win-
ston, 1450 E. 55th Place, 830-S, Chi-
cago 60637. NS

In two sections. OPEN, 30/1. EF:
\$4 if recd by 2/3, \$6 later, \$1 off to
IGA mems. \$\$: 35-20,C,D,E each 10,
unr. 8, top HS gets free entry into
U-High School Open in May. RDS: 9-12-
3-6. REG: 8-8:30AM. NS.

SCHOLASTIC, 30/30, open to grades
8 and below. EF: \$1.50 if recd by 2/3,
\$2.50 later, 50¢ off to IGA mems. \$\$:
Trophies to top 2, grade 6/below, top
team of 4. RDS: 9:30-11-1-3. REG:
8:45-9:15AM. NS.

FEB 8-MAR 8 CHICAGO CC WEDNESDAY SWISS

40/2,5-SS, Chicago CC, 24 N.
Franklin, 4th flr., Chicago 60606. EF:
\$10, under 19 \$8 if recd by 2/5; \$1
more at site. \$\$: (based on 25 en-
tries) 60-30,B,C,D each 25 or 1 yr
CCC memb., trophy to top unr if 3 or

HOW TO READ TOURNAMENT LISTS

CC: Chess Club.

EF: Entry fee.

ENT: Where to send entries.
Include full name, address, USCF
rating (state if unrated and
estimate strength), USCF identi-
fication number and expiration
date, name and date of tourna-
ment, entry fee and USCF dues if
joining or renewing.

HR: Hotel rates. First figure
is single rate, second is double-
occupancy, etc.

LS: Limited smoking.

NS: No smoking.

Quad: Quadrangular. Players
of similar strength are grouped
in four-palyer (or larger) round-
robin sections and play only
within their section.

Rds: Schedule of games.

Reg: The hours during which
players may register at the play-
ing site.

RR: Round robin. Each palyer
meets every other player.

SS: Swiss system. A pairing
system in which, generally, play-
ers with similar scores are pair-
ed.

TL: Time limit.

Unr: Unrated.

USCF+EF: Some organizers give
a reduced rate, combining USCF
dues and the entry fee.

\$\$: Prizes guaranteed by the
sponsor unconditionally. Some-
times prizes are based on the
number of entries. Payment of
the prize fund is the responsi-
bility of the sponsor only, and
not of the USCF.

(More tournaments on next page.)

FEB 12 WELCOME HOME TIM REDMAN 3-SS
 40/90, 3-SS, Chicago CC, 25 N.
 Franklin, 4th flr., Chicago 60606. EF:
 \$4 if recd in adv., \$5 at site, \$1 off
 to CCC mems. \$\$: (in each 8-man sec-
 tion by rating) 1-yr CCC memb. or tro-
 phy to first, book to second. RDS:
 10-1:30-5. REG: 9-9:45AM. ENT: call
 726-1137.

FEB 18-19 ST. VALENTINE'S DAY MASSA-
 CRE
 50/2, 5-SS, Chicago Chess Center,
 2666 N. Halsted, Chicago 60614. EF:
 \$12.50 if recd by 2/17, \$14.50 at
 site. \$\$: 70-35, B,C,D/E each 40.
 RDS: 11-3-7, 11-3. REG: 9:45-10:45AM.
 ENT: address above.

FEB 24-26 LPCC 2ND ANNUAL KORCHNOI
 INTERNATIONAL VICTORY CELEBRATION
 40/2, 5-SS in two sections, Lin-
 coln Park CC, 2526 N. Lincoln Ave.,
 Chicago 60614. SECTION 1: open to
 all. \$\$: 125-75, A,B each 50. SECTION
 2: open to 1599 below. \$\$: 125-75, D,
 E/unr each 50. BOTH SECTIONS: EF:

\$19, under 19 \$16, if recd by 2/23
 (mail EF ackn); \$3 more at site; \$5
 off the LPCC mems. RDS: 7:30, 11-4,
 11-4; ½-pt bye in rds 1 or 2 if reqd
 in adv. REG: 12-7PM. ENT: address a-
 bove.

FEB 25 HELLUVA HURRICANE
 40/1, 4-SS, Chicago Chess Center,
 2666 N. Halsted, Chicago 60614. EF:
 \$10 if recd in adv., \$12 at site. \$\$:
 (based on 6 entries per class) A,B,C,
 D,E each 40; unr eligible only for A
 prize. RDS: 11-1:30-4-6:30. REG:
 9:45-10:45AM. ENT: address above.

FEB 25 MUSTANG ROUNDUP NO. 5
 50/90, 3-SS, Cafeteria, Rolling
 Meadows HS, 2901 Central Rd., Rolling
 Meadows 60008. Open to below 1800 and
 unr. EF: \$4 if recd by 2/23; \$1 more
 at site. \$\$: (based on 40 entries)
 open to 30-20-10, D/E 25-20-15-10, unr
 20-10. RDS: 9-1-5:30. REG: 8-8:45AM.
 ENT: Hugh Persson, Rolling Meadows HS,
 2901 Central Rd., Rolling Meadows, IL
 60008. NS.

Games of interest

SICILIAN DEFENSE

W. Walsh, Argonne Pawns -- P. Weston, WE Montgomery

1. e4	c5	9. Bg5	Nd4	17. b5	ab
2. Nf3	d6	10. Nd5	Qa5+	18. Qb5+	Kd8
3. d4	cd	11. b4	Qd8	19. Bd5	Qc7
4. Nd4	Nf6	12. Bf6	gf6	20. 0-0	Qc3
5. Nc3	a6	13. c3	Nf3+	21. Rfc1	Rg8+
6. a4	e5	14. gf3	Be6	22. Kh1	Qf3mate
7. Nf3	Nc6	15. a5	Bd5		
8. Bc4	Bg4	16. Qd5	Qe7		