

Chicago Industrial Chess League

BULLETIN

VOLUME 21 NUMBER 5

Need volunteers for phone match

CICL President Greg Berry is looking for volunteers to help organize and to play in a telephone match between the CICL and the New York Industrial Chess League.

The match is scheduled for March 18 or 25. Both days are Saturdays. Time control will be 30 moves in the first hour and 20 moves per half hour after that. The match will probably start at noon and will run no longer than seven hours.

Each team will play 15 boards, so the CICL will be represented by the top-rated 15 volunteers.

The spadework for the match has been done, but a volunteer is needed to complete the organization.

Anyone interested in organizing or playing in the match should call Berry at (312) 739-7711, ext. 5056.

Standings

<u>FAR WEST DIVISION</u>	<u>W</u>	<u>L</u>	<u>D</u>	<u>Pts.</u>
Argonne Pawns	3	1	0	17½
BTL Dragons	3	1	0	16½
WE Kingsmen	3	1	0	11
Argonne Rooks	2	1	1	16
Wheaton College	1	1	2	12½
Argonne Bishops	2	2	0	8
WE Montgomery	0	3	1	8
Amoco	0	4	0	6½

<u>NEAR WEST DIVISION</u>	<u>W</u>	<u>L</u>	<u>D</u>	<u>Pts.</u>
WE Chargers	5	0	0	24½
BTL Royals	3	1	1	20½
Argonne Knights	3	1	1	16
Argonne Monarchs	2	2	1	15
CPC International	1	2	2	15
WesCom	2	3	0	12½
Zenith-Rauland	1	3	1	10½
Int'l Harvester	0	5	0	5½

<u>EAST DIVISION</u>	<u>W</u>	<u>L</u>	<u>D</u>	<u>Pts.</u>
Alumni Central	4	0	0	15½
R.R. Donnelley	3	1	0	18½
IBT A	2	0	2	18
Harza	2	1	0	12½
Sears Challengers	2	2	0	11½
FNB	1	1	1	11
Sears #1	1	2	1	10½
GATX	1	2	0	8
IBT B	1	2	0	5

IN THIS ISSUE

We get letters	3
Division reports	4
Match results	5
Ratings	7
Chess news	11
Grandmaster classics	13

CICL directory

PRESIDENT

Greg Berry 739-7711 x5056
Bldg. 335
Argonne National Laboratory
9700 S. Cass Avenue
Argonne, IL 60439

SECRETARY

Charles Ward 739-7711 x3181
Bldg. 362
Argonne National Laboratory
9700 S. Cass Avenue
Argonne, IL 60439

TREASURER

Doug Anderson 690-3275
Room IH 2G417
Bell Telephone Laboratories
Warrenville and Naperville Rds.
Naperville, IL 60540

RATING CHAIRMAN

Terry Andresen 875-7768
Sears, Roebuck and Co.
Dept. 704-4, 52-11
Sears Tower
Chicago, IL 60684

USCF MEMBERSHIP

Charles Ward 739-7711 x3181
Bldg. 362
Argonne National Laboratory
9700 S. Cass Avenue
Argonne, IL 60439

BULLETIN EDITOR

Dave Baurac 739-7711 x5220
7517 Country Lane South
Darien, IL 60559

EAST DIV. CHAIRMAN

Tom Gaffigan 732-3988
16th Floor
#1 First National Bank
Chicago, IL 60670

NORTH DIV. CHAIRMAN

Lee Stensaker 724-6100 x2412
Signode Corp.
3650 W. Lake Avenue
Glenview, IL 60025

NEAR WEST DIV. CHAIRMAN

Mike Dee 420-4644
Bldg. 601
Amoco Research Center
Warrenville Road
Naperville, IL 60540

FAR WEST DIV. CHAIRMAN

Joe Brozovich 690-2898
Western Electric
Room 6C314
Bell Telephone Laboratories
Warrenville and Naperville Rds.
Naperville, IL 60450

Deadlines for ratings, bulletin

The deadline for submission to next month's bulletin -- games, chairmen's reports, match results, letters, etc. -- is January 11. Anything received after that date will appear in the following issue.

Deadline for division chairmen to get match results to Terry Andresen is the first of each month. This will give him time to include the results in the ratings list and get the list to the bulletin in time for the next issue.

We get letters

The latest CICL Bulletin (Vol. 21, No. 4) contains an error that could have a serious effect on Phil Wong's CICL rating as well as historical reporting taken from our bulletins. In the Kemper-EXcaliburs match G. Leong did score a point at first board, but not against Wong. Phil was not able to make that match at the last minute and lost an unplayed time forfeiture. This should have been listed as a forfeit win for Leong. Please make the appropriate correction.

In a bulletin last year, another error was made regarding D. Danes's status. Don, an alumnus of the Procon team, was present at the UOP/Procon-EXcaliburs match. Since he was available, he played a match with J. Galvin of the EXcaliburs. Since Danes was a member of neither squad, he was listed as an alumnus of Procon. This was incorrectly interpreted to mean he was an EXcalibur. This error could have been avoided if division chairman Ned Anderson had checked the approved roster of EXcaliburs previously submitted.

Incidentally, I do not like the new format of team results. Although some space is saved, I believe we are losing the impact of individual results and perhaps some accuracy in picking up the correct result for an individual encounter. Save space by dropping the definition of the algebraic system of notation.

Jim Brotsos

The above corrections have been noted in this month's Match Results

section.

The reason for the new match results format is not to save space, but to make the typing job easier. The section's accuracy has nothing to do with the format but is rather a result of accuracy in reporting and typing.

The algebraic explanation was put in after a caller complained that he did not understand algebraic notation. By now, however, everyone has had a chance to read it, and it will appear only periodically as future space permits. -- Ed.

I am personally happy to announce that the Mundelein-Libertyville Chess Club, which has been inactive for about four years, is once again holding weekly meetings at 7 p.m. Tuesdays in the Mundelein Park District building at 100 N. Seymour Ave., Mundelein. We hope by early spring to sponsor USCF-sanctioned tournaments. At present, our membership is about 40 with half being USCF members, and we are constantly increasing our membership.

For more information, contact any of the following:

Jim Johnson, treasurer. 151A Hickory Rd., Mundelein. (312) 566-4690.

Joe Owen, tournament and rating chairman. 1722 Bishops Way, Mundelein. (312) 566-7305.

Dave Jess, secretary. W288 Fairview, Mundelein. (312) 566-4911.

Michael Caldwell,

President

411 S. Lake Shore Dr.

Mundelein, IL 60060

(312) 566-1741

Division reports

NEAR WEST DIVISION -- MIKE DEE

A dispute between J. Desjardins of CPC International and Mark Peterson of the Argonne Monarchs is resolved by the following statement from Chess Life and Review, March 1974, page 174:

CASE: White is on his time-control move. He moves quickly, but is unable to stop his clock before his flag drops. Black then claims a win on time after White stops his clock. Did Black have to make his claim before White stopped his clock but after the flag dropped, or does he have all the time of his subsequent move to make a claim?

COMMENTS: Article 14.4 of the Laws of Chess states that "when determining whether the prescribed number of moves has been made in the given time, the last move is not considered as completed until the player has stopped his clock." A 1974 FIDE Interpretation elaborated upon this article by stating that the flag is assumed to have fallen when the director (or a player, when no director is present) observes the fact.

Under the USCF Tournament Rules a claim may be presented at any time after a player's time-control period expires (under the conditions stated in Rule 29), so long as the opponent makes his claim while the evidence of the player's flag and the number of moves played indicate that the player has not met the time-control.

Since Mark Peterson's flag was down when he punched his clock after move 45, Joe Desjardins wins on time.

After round five, it is clear that the Western Electric Chargers will win this year's divisional championship. They are well balanced on all boards, and, above all, they are highly motivated. They grow stronger with each round. Candidates for second place are the Argonne Knights, last year's champion, the BTL Royals and WesCom, the newcomers to the league. CPC International, the Argonne Monarchs and Zenith-Rauland also have chances to pull a surprise. The final four rounds will be decisive in this matter.

FAR WEST DIVISION -- JOE BROZOVICH

The only two undefeated teams in the Far West Division bit the bullet in round four, as the Wheaton Crusaders beat the BTL Dragons 4 to 2, and the Argonne Pawns squeaked past the Western Electric Kingsmen $5\frac{1}{2}$ to $\frac{1}{2}$. In other games the Argonne Rooks beat Western Electric Montgomery 6 to 0, and the Argonne Bishops beat Amoco $3\frac{1}{2}$ to $2\frac{1}{2}$. So now we have a three-way tie for first place with the Pawns, Dragons and Kingsmen all sporting a 3-1 record.

In round five, the Pawns travel to Amoco, BTL travels to WE Montgomery, the Kingsmen host the Argonne Rooks, and Wheaton hosts the Argonne Bishops. Good luck, and Merry Christmas and Happy New Year to one and all.

EAST DIVISION -- TOM GAFFIGAN

The battle for trophies in the East Division is shaping up as a very close and interesting race. Last year's leaders, Sears #1 and First National Bank, have already experienced major setbacks. Sears has lost twice -- once to Harza Engineering and once to R.R. Donnelley -- and drawn with IBT's A-team. FNB also drew with IBT-A and was upset by the Sears Challengers. Alumni Central continues to roll along but received a scare from GATX before winning 3½ to 2½. Next month could tell the story for FNB as the team faces Harza and Donnelley.

Match results

NEAR WEST DIVISION

BTL Royals 5½, WesCom ½: 1. K. Jakstas + M. Flynn; 2. D. Anderson + D. Graft; 3. P. Yang + S. Tay; 4. P. Hoppner + P. Nelson; 5. G. Thomas = L. Lux; 6. G. De Witt + R. Medinger; 7. N. Reid + R. Hasz; 8. L. Martin - K. Molitor; 9. F. Salomon + D. Nottke. RD 4.

Argonne Monarchs 3, CPC International 3: 1. M. Peterson - J. Desjardins; 2. L. Baker + J. Stejskal; 3. K. Kellogg - B. Urbas; 4. R. Tewari + J. Mudde; 5. G. Dragel - F. Arnbruster; 6. B. Frost + A. DeLeon. RD 4.

Western Electric Chargers 4½, International Harvester 1½: 1. J. Warren = W. Ristoff; 2. B. Marcowka + W. Kanas; 3. K. Dobr + R. Motycka; 4. V. Stamm + W. Hallman; 5. M. Swiderski + T. Owens; 6. H. Wettersteno - E. Jacklin; 7. D. Wasian + J. Dziedzic. RD 4.

Argonne Knights 3, Zenith-Rauland 3: 1. G. Berry + S. Karlovics; 2. C. Young - A. Sanchez; 3. C. Ward - R. Kling; 4. B. Nelson + H. Tomlinson; 5. G. Kinsella - H. Lange; 6. K. Burba + J. Roelke; 7. W. Keig - H. Lopez. RD 4.

CPC International 3, BTL Royals 3: 1. J. Desjardins + D. Andreson; 2. B. Urbas + P. Yang; 3. F. Arnbruster + P. Hoppner; 4. J. Mudde - G. DeWitt; 5. A. DeLeon - N. Ried; 6. M. Evans - F. Salomon. RD 5.

Zenith-Rauland 1, Western Electric Chargers 5: 1. R. Kling - J. Warren; 2. H. Tomlinson - K. Dobr; 3. H. Lange - D. Kumro; 4. D. Lopez - V. Stamm; 5. H. Lopez = M. Swiderski; 6. R. Duenas = H. Wettersten. RD 5.

WesCom 2, Argonne Knights 4: 1. D. Graft + G. Berry; 2. S. Tay - C. Young; 3. J. Hoffman + C. Ward; 4. B. Medinger - B. Nelson; 5. J. Pomykala - G. Kinsella; 6. K. Molitor - K. Burba. RD 5.

International Harvester 1½, Argonne Monarchs 4½: 1. W. Ristoff - M. Peterson; 2. W. Kanas - R. Tewari; 3. E. Jaklin - L. Baker; 4. R. Motycka + K. Kellogg; 5. D. Carter = G. Dragel; 6. T. Owens - B. Frost. RD 5.

EAST DIVISION

GATX 5½, Metropolitan CC ½: 1. G. Vivian = A. Wilson; 2. J. Albrecht + forfeit; 3. D. Dykstra + forfeit; 4. H. Mui + forfeit; 5. D. Lane + forfeit; 6. J. Passis + forfeit. 8 Nov 77.

Sears Challengers 4, IBT B 2: 1. R. Reyes + M. Downs; 2. F. Kuch + W. Vollmer; 3. M. Stone + T.E. Billingsley Sr.; 4. L. Bess + D. Lukes; 5. L. Lidell - M. Wedell; 6. R. Laura - J. Bennett. 10 Nov 77.

Harza 4, Sears #1 2: 1. M. Stevanovic + R. Golla; 2. J. Rigor = E. Latimer; 3. P. Kolenda + T. Andresen; 4. O. Bujwid - H. Chan; 5. R. Munoz + B. Morton; 6. J. Baron = S. Schwartz. 16 Nov 77.

Harris Trust 0, IBT A 6: 1. forfeit - E. Sedlock; 2. forfeit - K. Buell; 3. forfeit - G. Keith; 4. forfeit - K. Wollenberg; 5. forfeit - W. Logelin; 6. forfeit - R. Lavith. 29 Nov 77.

Sears #1 1½, R.R. Donnelley 4½: 1. R. Golla - G. Dobbins; 2. E. Latimer - F. Leben; 3. T. Andresen + H. Swanson; 4. H. Chan - R. Burk; 5. B. Morton = A. Mackey; 6. P. Rolewicz - R. Baran; 7. L. Bess (Sears Challengers) - E. Taylor. 29 Nov 77.

First National Bank 2, Sears Challengers 4: 1. W. Leong - R. Reyes; 2. W. Nyman - F. Kuch; 3. T. Gaffigan + M. Stone; 4. P. Fisher - F. Ciba; 5. R. Buchanan - W. Lems; 6. M. Smith + L. Liddell. 1 Dec 77.

Alumni Central 3½, GATX 2½: 1. T. Czernecki - G. Neidhardt; 2. J. Dunworth + J. Albrecht; 3. W. Stephan + D. Dykstra; 4. R. Fabijonas - H. Mui; 5. M. Cox = J. Zimmer; 6. R. Dargis + A. Ginzburg. 1 Dec 77.

CORRECTIONS

Last month's bulletin (Vol. 21, No. 4) incorrectly reported the results on first board in the Kemper vs. EXcaliburs match. It read as follows: 1. G. Leong + P. Wong. It should have read: 1. G. Leong + forfeit.

One of last year's bulletins incorrectly reported the status of a player in a match between the EXcaliburs and UOP/Procon. D. Danes played for UOP/Procon and not for EXcaliburs.

Ratings

PLAYER	TEAM	RATING	GAMES	
AGRAWAL	,T	ZENTH	1573	2
ALDORT	,L	TTY	1630	2
ALOJADO	,M	CHRGR	1582	1
ANDERSON	,D	ROYLS	1713	3
ANDERSON	,N	SARAL	1892	1
ANDRESEN	,T	SRS#1	1820	4
APPELMAN	,E	ROOKS	1659	2
BAKER	,L	MNRCS	1466	2
BARAN	,R	RRD	1348	1
BARHORST	,J	ROOKS	1463#	2
BARON		HARZA	1372#	2
BAURAC		BSHPS	1321#	3
BECK	,N	ROOKS	1401	1
BENEDEK	,R	ROOKS	2216	3
BERRY	,G	KNIGHT	1900	3
BINGLE	,J	MNRCS	1530	2
BLAZIE	,J	KNGMN	1701*	1
BRENDA	,C	DRGNS	1681	1
BROSIG	,A	SIGND	1643	4
BROZOVICH	,J	KNGMN	1745	3
BUELL	,K	IBT-A	1659	3
BUJWID		HARZA	1577#	2
BURBA	,K	KNIGHT	1481	1
BURK	,R	RRD	1541	4
BYCKOWSKI	,M	ITT-1	1544	1
CAMPBELL	,T	SRSCH	1475	1
CARLSON	,J	RRD	1534*	2
CHAN		SRS#1	1753*	4
CIBA	,F	SRSCH	1476	2
COMROE	,R	MTRLA	1186#	1
CONWAY	,F	ZENTH	1564*	2
COOVER	,K	BSHPS	1323#	1
COX	,M	ALUMN	1676#	2
CZERNIECKI		ALUMN	2186	3
DALEY	,J	BSHPS	1355	2
DARGIS	,R	ALUMN	1515	3
DASSIE	,K	ZENTH	1526*	1
DAVIDSON		CRSDR	1563#	3
DAVIS	,J	FBNBK	1499*	1
DECMAN	,S	ROOKS	1499	2
DEE	,M	AMOCO	1372	2
DESJARDINS	,J	CPCIL	1450	2
DEVER	,D	ROOKS	1515	3
DOBBINS	,G	RRD	1729C	4
DOBR	,K	CHRGR	1777C	3
DOWNS	,M	IBT-B	1398#	3
DUNWORTH	,J	ALUMN	1901	3
ELLIOTT	,W	KNGMN	1666C	3
ERTEL	,M	HARIS	1355*	2
FABIJONAS	,R	ALUMN	1754C	3
FAJFAR	,DJ	AMOCO	1363*	3
FEDER	,H	PAWNS	1334	3
FISH	,R	KNGMN	1521*	2
GAFFIGAN	,T	FBNBK	1551*	1
GAILUS	,W	ALUMN	1387*	1

PLAYER	TEAM	RATING	GAMES	
GIBBS		FBNBK	1796#	2
GILMER	,J	TTY	1550	2
GOLLA	,R	SRS#1	1856	4
GONCHAROFF	,N	MTRLA	1799C	2
GREEN	,D	PAWNS	1500	3
GREENSPAN	,P	MTRLA	1537C	1
HARRINGER	,R	KNGMN	1519	3
HENNING	,J	MTRLA	1653	2
HERNANDEZ	,D	MTRLA	1493	1
HOROWITZ	,C	PAWNS	1993#	3
HOSKINS	,E	SIGND	1158#	2
HOUSE	,F	DRGNS	1850	3
HUFF	,S	SIGND	1448*	3
JACKSON	,J	BSHPS	1980C	3
KARLOVICS	,S	RALND	1713	2
KEIG		KNIGHT	1271#	2
KEITH	,G	IBT-A	1650	3
KELLOGG	,K	MNRCS	1517	3
KINSELLA	,G	KNIGHT	1542	3
KLEIN,A		SIGND	1437*	2
KLEIN,J		SIGND	1206	2
KLEMM	,J	TTY	1497	4
KLINE		CRSDR	1099#	3
KLING	,R	RALND	1363*	2
KOZACKY	,J	PRCON	1786	1
KROHN	,V	MNRCS	1767C	1
KUCERA	,D	MNRCS	2013	2
KUCH	,F	SRSCH	1643*	3
KUMRO	,D	CHRGR	1686C	3
LANGE	,H	RALND	1138*	2
LATIMER	,E	SRS#1	1870	4
LAUTH	,R	IBT-A	1466C	2
LEBEN	,F	RRD	1672	4
LEE	,R	WEMNT	1473*	2
LEE	,RJ	AMOCO	1623	2
LEMS	,B	SRSCH	1519	1
LEONG		FBNBK	1957#	2
LOGELIN	,W	IBT-A	1564	3
MACKAY	,A	RRD	1456*	2
MCANANY	,J	ITT-1	1413	1
MEYER	,JR	PAWNS	1328#	2
MIHAILOVIC	,S	PAWNS	1939C	2
MORTON	,B	SRS#1	1657*	4
MOTYCKA		IHARV	1270#	2
MUDEDE	,J	CPCIL	1331*	3
MUIR	,L	AMOCO	1625	1
MUNOZ		HARZA	1647#	2
MYSLINSKI		DRGNS	1486*	1
NELSON		KNIGHT	1530*	3
NELSON	,S	FBNBK	1454#	2
NEUMARK	,J	MTRLA	1772C	2
NYMAN	,W	FBNBK	1872	2
OELRICH	,R	ITT-1	1688	1
OGASAWARA	,R	MTRLA	1630C	1
PARKER	,L	WEMNT	1978*	3

More ratings

PLAYER	TEAM	RATING	GAMES
PASTURCZAK,RJ	SIGND	1318	2
PETERSON ,M	MNRCS	1802	3
PFEFFER ,D	DRGNS	1518*	2
PUDAITE	CRSDR	1354#	1
PULLAR	SARAL	1130#	1
REID	ROYLS	1408#	3
REINHARDT ,V	AMOCO	1255#	2
RENNER ,T	PAWNS	1493	1
REYES ,R	SRSCH	2213	3
RISTOFF	IHARV	1325#	3
ROELKE ,J	RALND	1210	2
ROLEWICZ ,P	SRS#1	1509#	1
ROSEN ,J	DRGNS	1566	3
ROTHSCHILD,J	GATX	1300*	1
SAIFULLAH ,M	PRCON	1739*	1
SANCHEZ	RALND	1718#	3
SATTERLEE	IHARV	1662*	3
SCHROEDER ,H	AMOCO	1870	1
SCHULMAN ,R	ZENTH	1799	2
SCHWARTZ ,S	SRS#1	1626C	2
SEDLOCK ,E	IBT-A	1770	3
SHAFF ,R	KNGMN	1530	3
SHIRKEY ,L	BSHPS	1658	2
SIVULA ,B	SARAL	1442	1
SOBUN ,J	DRGNS	1624	2
STAMM ,V	CHRGR	1642	3
STEJSKAL ,J	CPCIL	1424	3
STENSAKER ,L	SIGND	1470	3
STEPHAN ,W	ALUMN	1628*	3
STEVANOVIC	HARZA	2113*	3
STONE	SRSCH	1501#	3
STREETS ,D	PAWNS	2117	3
STUHLBARG ,D	PRCON	1448*	1
SUE	TTY	1432#	3
SWANSON ,H	RRD	1606	4
SWIDERSKI ,M	CHRGR	1496	1
TACON ,H	IBT-A	1647	1
TANG	PRCON	1847#	1
TAYLOR ,E	RRD	1310*	2
TEGEL ,F	TTY	2043	2
TEWARI ,K	MNRCS	1494*	3
THOMAS ,J	KNGMN	1408	2
THOMPSON ,L	BSHPS	1191#	1
TITUS ,R	TTY	1072*	2
TOMLINSON ,H	RALND	1347	3
TUMALAD ,L	PRCON	1478*	1
URBAS ,B	CPCIL	1466*	3
VANSCOTT ,J	FNBK	1497*	2
VICKEY ,B	SARAL	1256#	1
VIVIAN ,G	GATX	1394	2
WALSH ,W	PAWNS	1647	3
WARD ,C	KNGHT	1676C	3
WARREN ,J	CHRGR	2080C	3
WESTON ,J	AMOCO	1459*	1
WESTON ,P	WEMNT	1361	3

PLAYER	TEAM	RATING	GAMES
WILSON ,A	METCC	1599	3
WILSON ,D	DRGNS	2008C	2
WILSON ,R	ROOKS	1738	3
WOLLENBERG,K	IBT-A	1673	3
YOUNG ,C	KNGHT	1945*	2
YUKNAVECH ,R	WEMNT	1527*	2

5-9 GAMES

* 10-24 GAMES

C CENTURY CLUB MEMBER

NEW PLAYER TEAM

BELL	RRD
DEWITT	ROYLS
EMPLEO	HARZA
EVANS	CPCIL
FAKSTAS	ROYLS
FLYNN	WESCM
GIBSON	CPCIL
GRAFT	WESCM
HASZ	WESCM
HOPPNER	ROYLS
JACKLIN	IHARV
JAKSTAS	ROYLS
KANAS	IHARV
LAURA	SRSCH
LOPEZ	RALND
LOPEZ,H	RALND
LULSER	IBT-B
LUX	WESCM
MARCONKA	CHRGR
MARTIN	ROYLS
MEDINGER	WESCM
NELSON	WESCM
PATNERSON	WESCM
REDDICK	ROYLS
RIGOR	HARZA
RODRIGUEZ	IBT-A
TAY	WESCM
THOMAS	ROYLS
YANG	ROYLS

More ratings

EAST DIVISION

BIG TEN

PLAYER	RATING	TEAM
REYES	2213	SRSCH
CZERNIECKI	2186	ALUMN
DUNWORTH	1901	ALUMN
NYMAN	1872	FNBK
LATIMER	1870	SRS#1
GOLLA	1856	SRS#1
ANDRESEN	1820	SRS#1
SEBLOCK	1770	IBT-A
FABIJONAS	1754	ALUMN
DOBBINS	1729	RRD

NEAR-WEST DIVISION

BIG TEN

PLAYER	RATING	TEAM
WARREN	2080	CHRGR
KUCERA	2013	MNRCS
BERRY	1900	KNGHT
PETERSON	1802	MNRCS
DOBR	1777	CHRGR
KROHN	1767	MNRCS
ANDERSON	1713	ROYLS
KARLOVICS	1713	RALND
KUMRO	1686	CHRGR
WARD	1676	KNGHT

NORTH DIVISION

BIG TEN

PLAYER	RATING	TEAM
TEGEL	2043	TTY
ANDERSON	1892	SARAL
GONCHAROFF	1799	MTRLA
SCHULMAN	1799	ZENTH
KOZACKY	1786	PRCON
NEUMARK	1772	MTRLA
OELRICH	1688	ITT-1
HENNING	1653	MTRLA
BROSIG	1643	SIGND
ALDORT	1630	TTY

FAR-WEST DIVISION

BIG TEN

PLAYER	RATING	TEAM
BENEDEK	2216	ROOKS
STREETS	2117	PAWNS
WILSON	2008	DRGNS
JACKSON	1980	BSHPS
MIHAILOVIC	1939	PAWNS
SCHROEDER	1870	AMOCO
HOUSE	1850	DRGNS
BROZOVICH	1745	KNGMN
WILSON	1738	ROOKS
BRENDA	1681	DRGNS

More ratings

MOST IMPROVED PLAYER

AWARD CANDIDATES

PLAYER	INCR	TEAM	DIV
LEBEN	074	RRD	EA
GILMER	050	TTY	NO
STAMM	047	CHRGR	NW
SHIRKEY	046	BSHPS	FW
DESJARDINS	037	CPCIL	NW
KELLOGG	037	MNRCS	NW
STEJSKAL	037	CPCIL	NW
TAYLOR	037	RRD	EA
BARAN	036	RRD	EA
BROZOVICH	033	KNGMN	FW

We need games

Yes, the Chicago Industrial Chess League Bulletin needs games -- copies of your league games to publish. Instructive games and entertaining games. Close games where you systematically squeezed victory out of an infinitesimal advantage, and wild games where you stole victory from the jaws of defeat because your opponent played like a patzer.

We need annotated games and unannotated games, but we will publish the annotated ones first. Submissions do not need to be typewritten, just legible. And if you annotate a game, please tell us who you are so we can give you credit for your notes.

Send submissions to: David Bau-rac, Editor, CIGL Bulletin, 7517 Coun-try Lane South, Darien, Ill. 60559.

Games of interest

POLISH OPENING

G. Berry, Argonne Knight - M. Peterson, Argonne Monarchs

1. P-QB4	N-KB3	12. P-QR4	P-Q4	23. B-N4	B-N5
2. P-QN4	P-KN3	13. PxQP	N(3)xP	24. B-K1	Q-K4
3. B-N2	B-N2	14. NxN	NxN	25. B-B2	BxR
4. N-KB3	O-O	15. Q-N3	N-B3	26. BxR	QxB
5. P-KN3	P-Q3	16. KR-Q1	Q-K2	27. RxB	R-Q1
6. B-N2	P-K4	17. P-K3	N-K5	28. BxP	RxN
7. O-O	N-QB3	18. B-QR3	Q-B3	29. RxB	BxR
8. P-N5	N-K2	19. QR-QB1	QxPch	30. Q-KB2	Q-R6ch
9. P-Q4	PxP	20. K-R1	NxPch	31. Resigns	
10. NxP	R-K1	21. PxB	RxP		
11. N-QB3	P-QR3	22. O-N2	OxP		

CHESS NEWS

Candidates Matches

Victor Korchnoi appears to be running away from Boris Spassky in their match to determine a challenger for the world championship. After 11 games the score stands at 6½ to 3½ in favor of Korchnoi. The 10th game is adjourned.

A problem developed, however, when Spassky failed to show up for the start of game 12. He is apparently protesting the removal of a large demonstration board from the playing area.

Managers of the match called an emergency meeting one hour after the game was scheduled to start. Normally, Korchnoi would have been awarded a forfeit win, but officials decided to investigate alternative solutions.

The demonstration board was removed in response to Korchnoi's protest over Spassky's leaving the game board and retiring to a specially screened off box to ponder his next move.

Spassky began using the box in game 10, and continued using it in game 11, the only game he has won during the match. Korchnoi then protested, and the resumption of the game 10 adjournment was postponed.

Korchnoi leaped to a quick lead by winning games two and three after a first-round draw in the match being played in Belgrade, Yugoslavia.

After draws in the next three games, the score stood at 4 to 2. Then Spassky appeared to play desperately for a win in the next two games, attempting to force drawn positions in

both. The result was that he lost both and fell behind 6 to 2.

The ninth game was drawn, and the 10th adjourned, before Spassky finally won the 11th.

The match is scheduled for 20 games. The first player to reach 10½ points wins. Spassky may be building some much-needed momentum with his 11th-round victory, but he is still three points down and his chances appear dim.

The winner of the match will face world champion Anatoly Karpov of the USSR in a championship match next spring or summer.

The following game is from the match.

Notes to this game are based on Mike Dee's translation of an article written by Yugoslavian grandmaster Dragoljub Velimirovic in the Belgrade newspaper Politika.

FRENCH DEFENSE

Spassky -- Korchnoi
2nd match game

- | | |
|--------|-----|
| 1. e4 | e6 |
| 2. d4 | d5 |
| 3. Nc3 | Bb4 |

A move often used by Nimzovich and which gives Black good attacking chances. Popularly known as the Winawer Variation, it is one of Black's most frequently played lines.

- | | |
|--------|-----|
| 4. e5 | c5 |
| 5. a3 | Bc3 |
| 6. bc3 | Ne7 |

At one time, overwhelming grandmaster opinion considered White to have the advantage in this position because of his space advantage, superior center pawns and active bishops. Later, games by Botvinnik, Korchnoi and Vaganian, following Nimzovich's methods, proved successful in coping with the White center pawns. A usual continuation is 7. Nf3 Nc6 8. Be2 Qa5 9. Bd2 Bd7 10. 0-0 0-0-0, followed by 11. ... f6, and White cannot maintain strong center pawns.

7. Qg4!?

White hopes to use pressure against the K-side to crush his opponent. For some time this move was considered decisive until Uhlmann and Ivkov showed that Black has good survival chances and that White must find a better way to win. It is surprising that Spassky uses this move here without any apparent improvement in mind.

7. ... cd

8. Qg7

Better is 8. Bd3 which gives the White K a better position than in the game after 8. ... Qc7 9. Ne2 dc 10. Qg7 Rg8 11. Qh7 Nbc6 12. f4 Bd7 13. 0-0 0-0-0.

8. ... Rg8

9. Qh7 Qc7

10. Ne2 Nbc6

11. f4 Bd7

12. Qd3 dc

13. Be3

Now Black gets a good game after 13. ... Nf5: A. 14. Nd4 Nd4 15. Bd4 0-0-0 16. 0-0-0 Nd4 17. Qd4 Qa5 with advantage to Black; or B. 14. Bd4 0-0-0 15. Bc3 d4 16. Bd2 f6! 17. ef e5 and White has a difficult position (Fichtl-Golz, Dresden 1959). This last variation is typical of Black's superiority. Presumably Spassky has an improvement in mind, but Korchnoi surprises him first.

13. ... d4

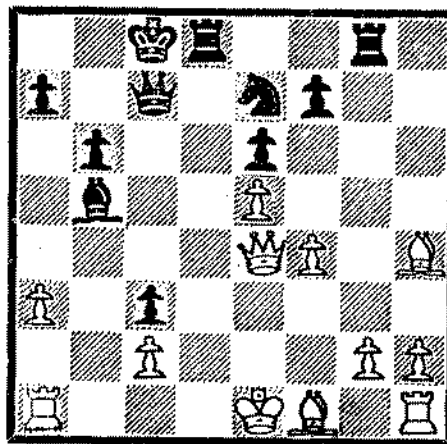
14. Bf2 0-0-0

15. Nd4 Nd4

16. Qd4 b6

17. Bh4 Bb5

18. Qe4



Position after 18. Qe4.

18. ... Bf1!

The correct continuation. Weaker is 18. ... Bc6 because of 19. Qc4. If then 19. ... Bg2, White gets the better game with 20. Qc7+ Kc7 21. Rg1 Bf1 22. Kf1 Rg1 23. Kg1 Rg8+ 24. Bg5!

19. Rf1 Rd5

20. Be7 Qe7

21. Rf3 Kb8!

An excellent move that protects the Black K and begins the final phase of White's downfall.

22. Kf1 Rd2

23. Rf2 Rgd8

24. Qf3 Rf2+

25. Kf2 Rd2+

26. Kg3 Qd8

27. Qe4 Qg8+

28. Kh3 Qh8+

29. Kg3 Qg7+

30. Kh3 Rd8

31. g4 Rh8+

32. Kg3 Qh6

33. Qg2 Qg4+

White has no chance to survive.

34. Kf3 Rd8!

35. Qg3 Qe7

36. g5 Rd2

37. Kg4 Qb7

38. Qc3 Rg2+

39. Kh3 Rf2

40. Kg4 Qe4

41. Resigns

Grandmaster Classics

Steinitz - Tschigorin, Havana 1892

Wilhelm Steinitz (1836-1900) is the father of positional play. Most of today's well known positional elements -- strong and weak squares, the isolated pawn, the good and bad bishops, the advantage of the two bishops, etc. -- were first systematically analyzed by Steinitz.

Before Steinitz, most of the world's strongest players were combinative geniuses who competed in creating slashing sacrificial attacks. Steinitz, too, was a successful combinative player early in his career at the Vienna Chess Club in Austria. But he began to suspect that his attacks succeeded, not because of his correct play, but because of poor defense by his opponents. By the time he moved to England in 1862, his thoughts had turned to positional concerns.

His positional study improved his defense, and it soon became clear that he was winning most of his games by refuting his opponents' attacks. In the process, he learned the positional requirements for launching a successful attack. In 1886, Steinitz met J.H. Zuckertort in the first official match for the world championship. Steinitz won 10 to 5 with 5 draws and became the first officially recognized chess champion of the world.

On attacking plan in particular was found in many of his games; set up a strong passive center, then attack on the flank. The following game shows this plan in action.

RUY LOPEZ

Steinitz -- Tschigorin
Match, Havana 1892

1. P-K4 P-K4
2. N-KB3 N-QB3
3. B-N5 N-B3
3. ... P-QR3 is almost always played today. The main line is 4. B-R4, N-B3; 5. O-O, B-K2 (5. ... NxP is the Open Variation); 6. R-K1, P-QN4; 7. B-N3, P-Q3; 8. P-B3, O-O; 9. P-KR3, and now Black usually chooses between 9. ... N-QR4 and 9. ... N-N1.

4. P-Q3 P-Q3
5. P-B3 P-KN3

Rarely seen in today's Ruy Lopez.

6. QN-C2 B-N2
7. N-B1 O-O
8. B-R4

This anticipates Black's attempt to

exchange the White KB by ... N-Q2, ... N-N3 and ... P-QR3.

8. ... N-Q2

According to Pachman, 8. ... N-K1 followed by ... P-KB4 is better.

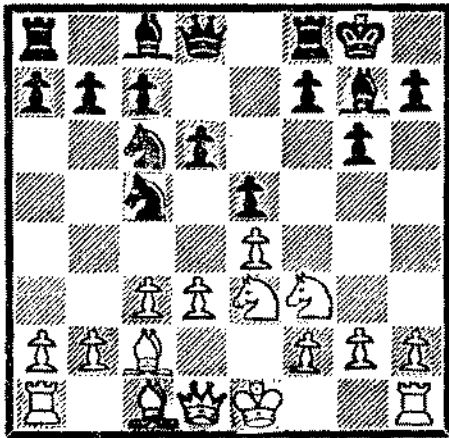
Euwe, however, recommends 8. ... P-QR3, giving the sequence 9. N-K3, P-QN4; 10. B-N3 (10. B-B2, P-Q4!), N-R4; 11. B-B2, P-B4 with good Q-side chances for Black.

9. N-K3

Restricting Black's possible ... P-Q4.

9. ... N-B4

Black needs an eventual ... P-Q4 to free his game, consequently 9. ... N-N3 is better.



Position after 10. B-B2.

This position, with White pawns at QB3 and Q3 and the White KB at B2, is typical of the set-up Steinitz favored. It is thematic in many of his games. He plans to forego opening the center with P-Q4. Instead, he will maintain a passive but strong center and attack with his K-side pawns. He plans to open the KR-file by P-KR4-5 and use the file to work up an attack with his heavy pieces.

- 10. ... N-K3
- 11. P-KR4! N-K2

At last Black prepares ... P-Q4. He must counter White's flank attack with action in the center.

If 11. ... P-KB4, White can open the game and expose the black K: 12. PxP, PxP; 13. P-Q4, P-K5 (13. ... P-B5; 14. Q-Q3!); 14. N-N5, NxN; 15. PxN, QxP; 16. N-Q5, QxP (16. ... Q-Q1; 17. Q-R5); 17. Q-R5, Q-N3; 18. QxQ, PxQ; 19. NxP, R-N1; 20. B-N3ch and White wins (Pachman).

If 11. ... P-QR3; 12. P-R5, P-KN4; 13. N-B5 give the White N a dominating post.

- 12. P-R5 P-Q4!
- 13. RPxP BPxP?

Steinitz had anticipated 13. ... RPxP! He would then have continued with O-K2. B-Q2, O-O-O and, if necessary, Q-B1 followed by a strong attack along the KR-file. The text move, however, completely changes the

character of the position. Black has exposed his K to attack along the a2-g7 diagonal, enabling White to open the center to his advantage. Steinitz immediately launches a combination to seize the diagonal with tempo.

- 14. PxP! NxP
- 15. NxN QxN
- 16. B-N3

"Now the weakness of 13. ... BPxP? appears. Instead of one favorable feature, the open KR-file, White now has two, which reinforce one another -- the KR-file and the open B diagonal from his QN3 to KN8. Positional equilibrium is thus seriously upset and the position is ripe for attack." -- Euwe.

- 16. ... Q-B3
- 17. Q-K2
- Preparing O-O-O and stopping any threat of ... P-K5.
- 17. ... B-Q2
- 18. B-K3

After White opens the center, his QB will threaten to occupy the a1-h8 diagonal.

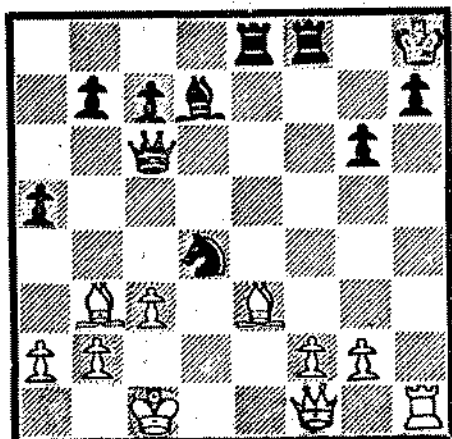
- 18. ... K-R1
- Black moves his K out of the B's line of attack and into the R's.
- 19. O-O-O QR-K1
- 20. Q-B1!

This prepares the final opening of the position with P-Q4 and enables the Q to occupy the KR-file at the right moment.

- 20. ... P-QR4

Black hopes to drive away the White KB, but it is already too late.

- 21. P-Q4! PxP
- Forced by the threat of 22. P-Q5.
- 22. NxP BxN
- If 22. ... NxN; 23. RxP, etc.
- 23. RxB! NxR



Position after 23. ... NxcR.

Black is anticipating 24. BxNch, R-B3, but Steinitz has something else in mind.

24. RxPch!

The real point of 20. Q-B1.

24. ... KxR

25. Q-R1ch K-N2

26. B-R6ch K-B3

Otherwise 27. BxRch, B-R6; 28. QxB mate.

27. Q-R4ch K-K4

28. QxNch K-B4

29. Q-KB4 mate.

Notes to this game were compiled from Max Euwe's The Development of Chess Style, Ludek Pachman's Modern Chess Strategy and Richard Reti's Masters of the Chessboard.

CHICAGO AREA CHESS CLUBS

Blue Island CC, 12804 Highland Ave., Blue Island. Ralph Larson, 785-2399.

Bridgeview CC, 8100 Ferdinand Ave., Bridgeview. Clem Wellman, 594-2572.

Chicago Chess Center, 2666 N. Halsted St., Chicago. 929-7010.

Chicago CC, 25 N. Franklin St., Chicago. 726-1137.

Chicago Chess Shop, 1126 N. State St., Chicago. 337-5277.

Gompers Park CC, 4224 W. Foster Ave., Chicago. Sheldon Gelbart, 345-7164.

Harper College CC, Algonquin and Roselle Rds., Palatine. Denny Litwin, 529-8228.

Hillside CC, 5152 Butterfield Rd., Hillside. Larry Stilwell, 449-9364.

Homewood-Flossmoor CC, 18350 Harwood Ave., Homewood. Bob Lauson, 799-7131, or Mike Quinlan, 597-5566.

Kennedy Park CC, 11320 S. Western Ave., Chicago. Joe Bannon, 445-0631.

Lincoln Park CC, 2526 N. Lincoln Ave., Chicago. 929-3035.

Lithuanian CC, 5620 S. Claremont Ave., Chicago. Algis Darguzis, 423-9738.

Mundelein-Libertyville CC, 100 N. Seymour Ave., Mundelein. Mike Caldwell, 566-1741.

Northeast Illinois CC, 1425 Circle Dr., Glendale Heights. George Dobbins, 665-1905 or 326-8237.

Oak Park CC, Harvard St. and Kenilworth Ave., Oak Park. Mark Coleman, 386-2803.

Park Forest CC, 410 Lakewood St., Park Forest. James Condron, 758-1281.

Park Ridge CC, 529 Forest View Ave., Park Ridge. Tom Sprandel, 692-3411.

Romeoville CC, 27 Montrose Dr., Romeoville. Paul Ilosvay, 544-0534.

University of Chicago CC, 1212 E. 59th St., Chicago. John Quigley, 753-2261.

Waukegan CC, 412 S. Lewis Ave., Waukegan. Kevin Bachler, 872-4807.

Games of interest

FRENCH DEFENSE

D. Streets, Argonne Pawns -- J. Jackson, Argonne Bishops

Notes by the winner.

- | | |
|---------|-----|
| 1. e4 | e6 |
| 2. d4 | d5 |
| 3. Nd2 | Nc6 |
| 4. Ngf3 | Nf6 |
| 5. e5 | Nd7 |
| 6. c3 | |

The best moves is 6. Nb3 (See Streets-Jackson, CICL Bulletin, Vol. 21, No. 1). This slower line was played to avoid prepared analysis.

- | | |
|--------|-----|
| 6. ... | f6 |
| 7. ef | Qf6 |
| 8. Bd3 | |

Black has a perfectly good game. His best plan is 8. ... Bd6 and 9. ... 0-0.

- | | |
|---------|------|
| 8. ... | e5!? |
| 9. 0-0! | e4 |
| 10. Be4 | de |
| 11. Ne4 | |

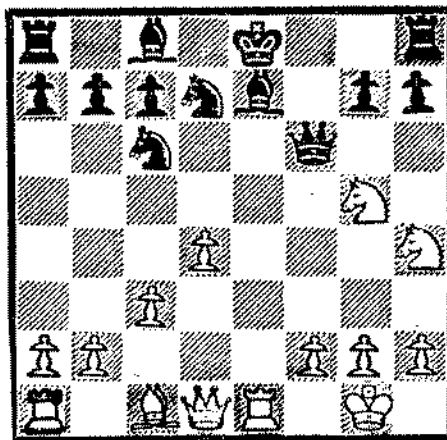
This is the critical position.

Black must avoid losing tempi to the knights and play 11. ... Qd8! White then maintains his advantage with 12. Qb3! Nf6 13. Bg5 Be7 14. Rel and should win.

- | | |
|---------|-----|
| 11. ... | Qg6 |
| 12. Nh4 | Qf7 |

If 12. ... Qe4 13. Rel Qelch 14. Qelch Be7 15. Nf5 still wins for White.

- | | |
|-----------|-----|
| 13. Ng5 | Qf6 |
| 14. Relch | Be7 |



Position after 14. ... Be7.

- | | |
|-----------|-----|
| 15. Re6! | Qf8 |
| 16. Qh5ch | g6 |
| 17. Rg6 | |

Stronger than 17. Ng6. Now Ne6 is a deadly threat after either 17. ... Kd8 or 17. ... hg 18. Qg6ch Kd8.

- | | |
|-----------|---------|
| 17. ... | Bg5 |
| 18. Rg8ch | Ke7 |
| 19. Bg5ch | Nf6 |
| 20. Rf8 | Rf8 |
| 21. Qh7ch | Resigns |

GIUCCO PIANO

W. Keig, Argonne Knights - T. Gaffigan, First National Bank

- | | | | | | |
|----------|-------|-----------|---------|------------|--------|
| 1. P-K4 | P-K4 | 15. P-QN4 | P-QN4 | 29. R-B7 | R-Q2 |
| 2. N-KB3 | N-QB3 | 16. N-Q2 | N-B1 | 30. R-B6 | Q-KB1 |
| 3. B-B4 | B-B4 | 17. N-K2 | N(1)-R2 | 31. R(1)xP | RxR |
| 4. P-Q3 | N-B3 | 18. P-QN3 | Q-Q2 | 32. RxR | Q-QN1 |
| 5. N-B3 | P-Q3 | 19. P-R3 | N-N4 | 33. P-K4 | Q-Q1 |
| 6. B-K3 | BxB | 20. N-N3 | KR-Q1 | 34. Q-B2 | Q-B2 |
| 7. PxB | B-K3 | 21. P-B4 | P-QB3 | 35. R-B6 | Q-N1 |
| 8. B-N3 | P-QR3 | 22. N-B5 | K-R2 | 36. Q-N6 | R-QN2 |
| 9. P-Q4 | BxB | 23. P-R4 | N(4)xP | 37. Q-R6 | R-QB2 |
| 10. RPxB | 0-0 | 24. NxN | NxN | 38. RxR | QxR |
| 11. 0-0 | P-R3 | 25. QxN | BPxP | 39. Q-B6 | Q-R2ch |
| 12. Q-Q2 | R-K1 | 26. PxP | K-R1 | 40. K-R2 | Q-KB2 |
| 13. P-Q5 | N-N1 | 27. 0-R3 | P-R3 | 41. QxNP | 0-N3 |
| 14. 0-O3 | QN-O2 | | | | |

Tournaments

ALWAYS BRING STAUNTON CHESS SETS AND CLOCKS UNLESS OTHERWISE INDICATED.

DEC 30-JAN 1 LPCC NEW YEAR'S CHAMPIONSHIP

5-SS, 40/100. Lincoln Park CC, 2526 N. Lincoln, Chicago 60614. Open to 1799/below. EF: \$29, under 19 \$24 if recd by 12/24 (mail EF ackn); \$35, \$30 jr at site; \$5 off to LPCC mems. \$\$: 300-200-100, C, D/E each 150 (unrs. may only qualify for 3rd place). RDS: 7:30, 11-3, 1-5. ½-pt bye in rds one or two if reqd in adv. REG: noon-7PM. Cash. ENT: LPCC, address above.

DEC 30-JAN 1 CHICAGO NEW YEAR FESTIVAL

6-SS, Chicago CC, 25 N. Franklin, 4th flr, Chicago 60606. 40/2. EF: \$15 if recd by 12/28, \$16 at site. USCF+EF: \$28, jr. \$23, \$31 & \$24 at site. \$\$: (based on 40 entries) 150-90-60, A, B, C, D each 50; trophy to top unr if 3 or more. RDS: 1-7, 9-2-7, 11-4; entrants must indicate what round 1-5 they will skip. Up to 2½ pts in byes if reqd in adv. REG: 11-12 & 5-6 12/30, or 8-1PM 12/31. ENT: Dennis Keen, address above.

JAN 4-FEB 1 CHICAGO CC WEDNESDAY SWISS

40/2, 5-SS, Chicago CC, 25 N. Franklin, 4th flr., Chicago 60606. EF: \$10, under 19 \$9, if recd by 1/2; \$12 at site; \$2 off to CCC mems. (\$35), \$1 off to ICA mems. \$\$: (based on 25 entries) 60-30, B, C, D 25 each, trophy to top unr if 3 or more. RDS: 7PM each Wed. REG: 5-6:60PM. ENT: Dennis Keen, address above.

JAN 7 CHICAGO SATURDAY SPECIAL NO. 1

40/2, 3-SS in 8-man sections by rating. Chicago CC, 25 N. Franklin, 4th flr., Chicago 60606. EF: \$5, \$1 off to CCC mems. \$\$: Trophy to first, book to 2nd each section. RDS: 10-

HOW TO READ TOURNAMENT LISTS

CC: Chess Club.

EF: Entry fee.

ENT: Where to send entries.

Include full name, address, USCF rating (state if unrated and estimate strength), USCF identification number and expiration date, name and date of tournament, entry fee and USCF dues if joining or renewing.

HR: Hotel rates. First figure is single rate, second is double-occupancy, etc.

LS: Limited smoking.

NS: No smoking.

Quad: Quadrangular. Players of similar strength are grouped in four-player (or larger) round-robin sections and play only within their section.

Rds: Schedule of games.

Reg: The hours during which players may register at the playing site.

RR: Round robin. Each player meets every other player.

SS: Swiss system. A pairing system in which, generally, players with similar scores are paired.

TL: Time limit.

Unr: Unrated.

USCF+EF: Some organizers give a reduced rate, combining USCF dues and the entry fee.

\$\$: Prizes guaranteed by the sponsor unconditionally. Sometimes prizes are based on the number of entries. Payment of the prize fund is the responsibility of the sponsor only, and not of the USCF.

(More tournaments on next page.)

JAN 14 CHICAGO JANUARY TORNADO
 40/1, 4-SS, Chicago CC, 25 N.
 Franklin, 4th flr., Chicago 60606. EF:
 \$7 if recd by 1/12; \$8 at site; \$5 off
 adv EF to CCC mems. \$\$: (based on 30
 entries) 50-25, B, C, D each 20. RDS: 10-
 12:30-3-6. REG: 8:30-9:30AM. ENT: Ad-
 dress above.

JAN 22 SOUTH SUBURBAN SWISS
 40/90, rd 1 35/1, 4-SS, Dolphin
 Lake Park Bldg., 183rd & Rt. 54, Home-
 wood 60430. EF: \$3, under 18 \$2.50
 (USCF+EF \$16, jr \$9, part jr \$4.50)
 if recd by 1/20; all \$1 more at site;
 1\$ off to H-F CC mems. \$\$: (based on
 40 entries) 40-20, C, D/E each 15, unr.
 10. RDS: 9-11-2:30-6. REG: 8-8:45AM.
 ENT: Ken Mann, 18627 Golfview Dr.,
 Hazel Crest, IL 60429. LS.

Games of interest

Here are two games by computers. The first game is between the highly ad-
 vertized Chess Challenger playing at level 3, its highest level of ability, and
 Chess Program 6-2-2 of ADP Network Services, Ann Arbor, Michigan. The second
 game was played between the bulletin editor and a small hobby computer at a re-
 cent electronics show.

IRREGULAR OPENING Chess Challenger -- Chess Program 6-2-2

1. P-Q4	P-K3	18. B-Q1	Q-K4	35. K-R2	QxBP
2. N-QB3	P-QB4	19. N-B3	Q-B5	36. P-QR4	P-KR4
3. N-K4	PxP	20. N-R5	Q-Q3	37. Q-N7ch	K-Q3
4. B-N5	Q-R4ch	21. R-B7ch	N-Q2	38. Q-N3ch	QxQch
5. B-Q2	Q-K4	22. NxP	Q-R3ch	39. KxQ	P-K4
6. N-N3	P-Q6	23. B-K2	Q-N3	40. P-N4	N-N3
7. B-B3	PxKP	24. B-Q3	KN-B3	41. P-R5	N-QB5
8. BxP	Q-QB4	25. N-N5	QR-KN1	42. N-N5	P-K5
9. B-Q4	Q-Q4	26. N(7)xP	PxN	43. N-B7ch	K-K2
10. B-KB3	Q-B5	27. P-KR4	P-KR3	44. N-R8	P-K6
11. P-N3	B-N5ch	28. N-B3	R-N5	45. N-N6ch	K-B2
12. P-B3	BxPch	29. B-N6	RxB	46. N-B4	P-Q5
13. BxB	QxBch	30. R-B8	Q-R3ch	47. N-K2	P-Q6
14. K-B1	P-Q4	31. K-N1	RxR	48. N-B4	P-Q7
15. R-B1	Q-K4	32. QxR(6)	R-B8ch	49. N-Q3	P-Q8(Q)
16. RxBch	K-K2	33. K-R2	RxRch	50. Resigns	
17. Q-B2	Q-R8ch	34. KxR	Q-B8ch		

The above game was arranged by Greg Berry and Dwight Kucera of Argonne Na-
 tional Laboratory.

RUY LOPEZ D. Baurac -- Hobby computer

1. P-K4	P-K4	4. O-O	NxP	7. RxPch	K-Q1
2. N-KB3	N-QB3	5. R-K1	N-QR4	8. Q-K2	P-Q3
3. B-N5	N-B3	6. RxN	Q-B3	9. R-K8	mate