

# Chicago Industrial Chess League

## BULLETIN

VOLUME 21 NUMBER 3

### Computer beats GM

A computer has finally beaten a grandmaster. It occurred in a blitz game following the Aronsen Chess Congress, a six-round Swiss held in London, Eng., Sept. 16-18.

Northwestern University's computer program Chess 4.6 was entered in the tournament, which drew 735 players, and finished with a score of 3½. After the tournament, a blitz game was

(Continued on page 8.)

#### IN THIS ISSUE

|                            |        |
|----------------------------|--------|
| Editorial .....            | 3      |
| Division reports .....     | 4      |
| Ratings explained .....    | 5      |
| Match results .....        | 6      |
| Chess News .....           | 7      |
| Grandmaster classics ..... | 9      |
| Games of interest .....    | 12, 15 |

### Standings

| <u>NEAR WEST DIVISION</u> | <u>W L D</u> | <u>Pts.</u> |
|---------------------------|--------------|-------------|
| WE Chargers               | 2 0 0        | 10          |
| CPC                       | 1 1 0        | 7           |
| Argonne Monarchs          | 1 1 0        | 6½          |
| BTL Royals                | 1 1 0        | 6½          |
| WesCon                    | 1 1 0        | 6           |
| Zenith-Rauland            | 1 1 0        | 5½          |
| Argonne Knights           | 1 1 0        | 4½          |
| Int'l Harvester           | 0 2 0        | 1           |

| <u>NORTH DIVISION</u> | <u>W L D</u> | <u>Pts.</u> |
|-----------------------|--------------|-------------|
| Motorola              | 2 0 0        | 10          |
| Signode               | 2 0 0        | 9½          |
| Zenith-Glenview       | 1 0 0        | 4           |
| EXcaliburs            | 1 0 0        | 3½          |
| ITT #1                | 0 0 0        | 0           |
| Procon                | 0 0 0        | 0           |
| Kemper Insurance      | 0 1 0        | 2½          |
| Sara Lee              | 0 1 0        | 2½          |
| Teletype              | 0 2 0        | 4           |
| ITT #2                | 0 2 0        | 0           |

| <u>EAST DIVISION</u> | <u>W L D</u> | <u>Pts.</u> |
|----------------------|--------------|-------------|
| Harza                | 1 0 0        | 6           |
| RR Donneley          | 1 0 0        | 6           |
| Alumni               | 1 0 0        | 4½          |
| FNB                  | 0 0 0        | 0           |
| Harris Trust         | 0 0 0        | 0           |
| IBT                  | 0 0 0        | 0           |
| Sears #1             | 0 0 0        | 0           |
| Sears Challengers    | 0 1 0        | 1½          |
| GATX                 | 0 1 0        | 0           |
| Metropolitan CC      | 0 1 0        | 0           |

| <u>FAR WEST DIVISION</u> | <u>W L D</u> | <u>Pts.</u> |
|--------------------------|--------------|-------------|
| Argonne Bishops          | 1 0 0        | 3½          |
| BTL Dragons              | 1 0 0        | 3½          |
| WE Kingsmen              | 1 0 0        | 3½          |
| WE Montgomery            | 0 0 1        | 3           |
| Wheaton Crusaders        | 0 0 1        | 3           |
| Amoco                    | 0 1 0        | 2½          |
| Argonne Pawns            | 0 1 0        | 2½          |
| Argonne Rooks            | 0 1 0        | 2½          |

# CICL directory

## PRESIDENT

Greg Berry 739-7711 x5056  
Bldg. 335  
Argonne National Laboratory  
9700 S. Cass Avenue  
Argonne, IL 60439

## SECRETARY

Charles Ward 739-7711 x3181  
Bldg. 362  
Argonne National Laboratory  
9700 S. Cass Avenue  
Argonne, IL 60439

## TREASURER

Doug Anderson 690-3275  
Room IH 2G417  
Bell Telephone Laboratories  
Warrenville and Naperville Rds.  
Naperville, IL 60540

## RATING CHAIRMAN

Terry Andresen 875-7768  
Sear, Roebuck and Co.  
Dept. 704-4, 52-11  
Sears Tower  
Chicago, IL 60684

## USCF MEMBERSHIP

Charles Ward 739-7711 x3181  
Bldg. 362  
Argonne National Laboratory  
9700 S. Cass Avenue  
Argonne, IL 60439

## BULLETIN EDITOR

Dave Baurac 739-7711 x5220  
7517 Country Lane South  
Darien, IL 60559

## EAST DIV. CHAIRMAN

Tom Gaffigan 732-3988  
16th Floor  
#1 First National Bank  
Chicago, IL 60670

## NORTH DIV. CHAIRMAN

Lee Stensaker 724-6100 x2412  
Signode Corp.  
3650 W. Lake Avenue  
Glenview, IL 60025

## NEAR WEST DIV. CHAIRMAN

Mike Dee 420-4644  
Bldg. 601  
Amoco Research Center  
Warrenville Road  
Naperville, IL 60540

## FAR WEST DIV. CHAIRMAN

Joe Brozovich 690-2898  
Western Electric  
Room 6C314  
Bell Telephone Laboratories  
Warrenville and Naperville Rds.  
Naperville, IL 60450

## Deadlines for ratings, bulletin

The deadline for division chairmen to get match results to Terry Andresen is the first of each month. This will give him time to include results in the ratings list and get the list to the bulletin editor in time to make the next bulletin.

Deadline for submissions to the bulletin -- games, chairmens' reports, letters, match results, etc. -- is November 16. Anything received after that date will appear in the following issue.

# Editorial

## League players should join USCF

Everyone who is serious about improving his chess play should join the United States Chess Federation. Joining the USCF gives you the opportunity to play in its sponsored tournaments, and there is no better way to test your chess ideas and improve your play than on the field of battle.

USCF members also receive each month's copy of Chess Life and Review, one of the nation's best chess magazines. Every issue is loaded with chess news, annotated games, endgame and opening studies, problems and a list of tournaments in every section of the country. Members also are eligible to buy chess books and equipment at discount prices.

Another reason to join is to preserve the support USCF gives to the nation's best young players by arranging special national tournaments and by subsidizing their play in international competition. This support is threatened because USCF membership, which soared to more than 59,000 following the Fischer-Spassky publicity of 1972, has tumbled to about 47,000.

To remedy the situation, the USCF is sponsoring a major membership drive to add at least 16,000 new members by the end of 1978. The membership drive deserves our support. We can help keep our sport strong and active in the United States by joining the USCF.

Because the CICL is a USCF affiliate, league players can join the USCF at a 20 percent discount. Annual dues for CICL players are \$12 instead of the usual \$15. For details, call Charles Ward at 739-7711, ext. 5220. Then start playing in USCF-rated tournaments and watch your game improve. 3181

## CICL banquet tax proposed

Jim Brotsos has made the following proposal which will be discussed at the spring business meeting:

As a way of stimulating attendance at our awards banquet by more people and a larger cross-section of clubs, I propose that each year, each member company be expected to buy at least one ticket to the banquet per team in the league. Teams not sending a single representative to the banquet can be assessed half the cost of the meal for one person. This banquet tax can be precollected with the normal dues payment and applied to ticket purchases the following June. This policy is intended to jog some of those fringe member teams that never show up at all-League functions and contribute almost nothing to the social aspects of the league.

# Division reports

## FAR WEST DIVISION -- JOE BROZOVICH

The College of DuPage team and the Amoco team dropped out of the Far West Division before play started in the first round. This left seven teams in the Far West and nine in the Near West. Since Amoco's team in the Near West had a bye in the first round, they were asked to join the Far West so each division would have eight teams and two natural interdivision positional rounds could be held at season's end. Amoco agreed, so the Far West team captains can use the original eight-team schedule that was sent to them at the beginning of the season. The Amoco captain is Dennis McGinn, and he can be reached at 420-5832.

As evidenced by the match scores of the first round, we are off to another exciting season. The Argonne Pawns look like the team of destiny this year, with three experts on their roster. Somehow the Bell boys managed to beat them in the first round, so it looks like another one of those wide open years.

In keeping with the musical chairs policy at Western Electric, I will be moving to room 6C314, and my new phone number will be 690-2898, effective 7 Oct. Please direct all correspondence and inquiries to my new office.

## EAST DIVISION -- TOM GAFFIGAN

Welcome to the three new teams in the East Division: Alumni Central, captain Ron Dargis; Metropolitan Correction Center, captain Abe Wilson; and Illinois Bell Telephone #2, captain Mike Downs. The alumni team showed strength in beating the Sears "B" Challengers.

The East Division will play a round robin schedule of 11 rounds, each team playing 10 matches and having one bye.

## NORTH DIVISION -- LEE STENSAKER

I am sorry to inform you that the Curtiss Candy team has suffered two recent losses in personnel that render it unable to participate in the 1977-78 season. We are hoping they may be able to revitalize their team for next season, but as no games have yet been played by Curtiss, please scratch them from your schedules.

This will diminish play slightly, but we can still look forward to a total of nine games for the season. If any other teams are lost early in the season, it may become necessary to supplement the schedule with a position round or some similar special event. In the meantime, however, let's follow the present schedule, simply treating Curtiss Candy as another bye.

# Rating system explained

The CICL rating procedure was originated by Jim Warren in 1968. It was first computerized in 1974 under the direction of Lee Sheridan. The program was rewritten by Terry Andresen last year using 9/370 ASSEMBLER language.

The rating procedure involves the use of equations that consider difference in ratings, game result and number of rated games played. The basic equations are

$$W_e = \frac{1}{\left(1 + 10^{\frac{-D}{400}}\right)} \quad \text{and} \quad \Delta R = K(W - W_e)$$

where D = the rating difference before the game;

W = 1 when the higher rated player wins,  
0 when the lower rated player wins, and  
 $\frac{1}{2}$  when the game is a draw;

K = 45 for players who have played 5 to 99 rated games,  
30 for players who have played 100 to 299 rated games, and  
20 for players who have played 300 or more rated games; and

$\Delta R$  = the change in rating. The correct algebraic sign (+ or -) for  $\Delta R$  is based on the game result.

How do you get a rating? By playing five or more games against rated opponents. When you have played five such games, without winning or losing all of them, your opponents' ratings are averaged, and, based on your winning percentage against them, a correction factor is added or subtracted from that average. This becomes your initial rating.

As you may have noticed, rated players' results are not affected by results against unrated players. Historical results are used for initial ratings, but the initial rating is not retroactive for the unrated games.

CICL rating chairman Terry Andresen will make every effort to see that the game results reported in each month's bulletin are included in the ratings reported in the same issue, but he may not make it every month because the deadline for ratings comes about two weeks earlier than the bulletin deadline. Game results mailed in time to appear in the bulletin may not arrive in time for him to insert them into the computer that calculates the ratings changes and prints out the updated ratings report.

Last season, team captains were asked to use player numbers to help speed the ratings process, but the new program no longer needs them. It is important, however, that team captains spell their players' names correctly and legibly. It would also be helpful if original match result sheets could be sent to the division chairman. When a chairman receives a copy, he then sends a copy of the copy to the ratings chairman, and a copy of a copy is too often illegible.

Team captains should also indicate on match result sheets when a new player is playing his first game. If he has a previous CICL or USCF rating please indicate that also; for example, CICL 1500 or USCF 1500 should be indicated in parentheses after the name of a new player with a previous rating of 1500. Prior CICL ratings should take precedence over prior USCF ratings. Carefully print new player names with the first initial to avoid confusion with established play-

# Rating system ...

ers who have similar last names. Notify Andresen immediately if you find errors in team rosters, game results or ratings as reported in the bulletin. Team captains should check the "new players" listing in each bulletin for misspelled names or other errors. Andresen will keep a complete copy of game reports for the season, so if an error in the ratings program's logic crops up, he can recalculate all ratings from the season's beginning.

The following changes have been made to last year's rating calculations:

1. The results of one of the Argonne tournaments have been eliminated.
2. Two duplicate matches were eliminated (Zenith-Rauland v. Wheaton College and International Harvester v. Fermilab).
3. Two additional matches were added (Western Electric Kingsmen v. Amoco and Argonne Rooks v. Western Electric Kingsmen).

## League CL&R missing

Someone out there is receiving the copy of Chess Life and Review that comes with the CICL's affiliation with USCF. We don't know who is receiving it.

Whoever you are, would you please call league ~~treasurer~~ Charles Ward at 739-7711, ext. 3181? He needs the information on the mailing label so he will know when the league affiliation expires and will need to be renewed.

*secretary*

## Match results

### EAST DIVISION

Sears Challengers 1½, Alumni Central 4½: 1. R. Reyes - T. Czernecki; 2. F. Kuch - J. Dunworth; 3. M. Stone - W. Stephan; 4. F. Ciba - R. Fabijonas; 5. B. Lems + R. Dargas; 6. L. Bess = W. Gailus.

### FAR WEST DIVISION

BTL Dragons 3½, Argonne Pawns 2½: 1. D. Wilson - D. Streets; 2. F. House = C. Horowitz; 3. J. Sobin - W. Walsh; 4. J. Rosen + D. Green; 5. C. Bhojwani + T. Renner; 6. D. Pfeffer + H. Feder; 7. G. Thomas - J.R. Meyer; 8. G. DeWitt - D. Johnson.

Wheaton College Crusaders 3, Western Electric Montgomery 3: 1. A. Davidson - L. Parker; 2. M. Burns + L. Ciesla; 3. P. Kline - D. Yuknavech; 4. P. Pudaite + P. Weston; 5. S. McClatchey - R. Lee; 6. B. Price + J. Lips.

Argonne Bishops 3½, Argonne Rooks 2½: 1. J. Jackson + R. Benedek; 2. L. Shirkey + D. Wilson; 3. D. Baurac + D. Dever; 4. J. Daley = R. Thompson; 5. K. Hostert - S. Decman; 6. L. Thompson - J. Barhorst.

Amoco 2½, Western Electric Kingsmen 3½: 1. L. Muir - J. Brosovich; 2. D. McGinn = W. Elliot; 3. R. Lee = R. Harringer; 4. J. Weston - R. Shaff; 5. D. Faifar = J.

# CHESS NEWS

## GMs do it too

Ever have an opponent who suddenly resigned when you thought he had a forced win? Have you ever resigned, only to discover an easy win a few minutes later? Well, the same thing happens to world class players.

Grandmaster Alexander Kotov of the USSR faced G. Lambert of England in the Lord John Cup, a 10-player round robin held in London in September. Kotov had an ELO rating of 2500, while Lambert's was 2420. The ELO rating is an international rating comparable to a USCF rating. The two met in round four, and this is what they played:

### QUEEN'S PAWN OPENING

Kotov - Lambert

- |         |      |
|---------|------|
| 1. d4   | Nf6  |
| 2. Nf3  | g6   |
| 3. Bf4  | Bg7  |
| 4. e3   | O-O  |
| 5. Nbd2 | d6   |
| 6. h3   | c5   |
| 7. c3   | Nc6  |
| 8. Bc4  | a6   |
| 9. a4   | cd4  |
| 10. ed4 | e5   |
| 11. Be3 | e4   |
| 12. Nh2 | d5   |
| 13. Ba2 | Be6  |
| 14. O-O | Ne7  |
| 15. Nb3 | Nd7  |
| 16. Qd2 | Nf5  |
| 17. Bf4 | Qe7  |
| 18. f3  | Nd6  |
| 19. Nf5 | Rfc3 |

(Continued next page.)

## Spassky-Korchnoi

The final candidates match between Boris Spassky of the USSR and Victor Korchnoi, who recently defected from that nation, has been scheduled to start November 15 in Yugoslavia. The city has not been selected but will be either Belgrade or Sarajevo.

The winner of the match will meet world champion Anatoly Karpov of the USSR next year with Karpov's title at stake.

## AIPE Chess News

The Association Internationale de la Presse Echiqueene, the international association of chess journalists, has recently reorganized and is offering to the general public a twice-monthly, English language bulletin, Chess News. Chess News is published in England and sent to subscribers by air mail. Each issue contains eight pages of news and games from recent grandmaster tournaments and matches, including candidates matches in the world championship cycle.

Subscriptions are \$20 a year, or \$28 for the rest of 1977 and all of 1978 if received by the end of November. To subscribe, make your check payable to AIPE account #1 and send it to Kevin O'Connell, 9 Greenwood, 12 Grange Avenue, Woodford Green, Essex IG8 9JT, England. This will make you a B-member of AIPE and give you a subscription to Chess News.

# Computer...

(Continued from first page.)

arranged with newly qualified grandmaster Michael Stean. Stean had tied for sixth position with 15 others at 4½ points.

Against Chess 4.6, Stean had five minutes on his clock while the computer had five seconds for each move. If the game lasted 61 moves, Chess 4.6 would lose on time.

Last August, Chess 4.6 won the world computer championship in Toronto, finishing with 4 points in a four-round Swiss against 15 other computer programs from around the world.

Here then is, according to British expert D. Levy, the only known game in which a computer has defeated a grandmaster.

## QUEEN'S FIANCHETTO DEFENSE Chess 4.6 - Stean

- |          |      |
|----------|------|
| 1. e4    | b6   |
| 2. d4    | Bb7  |
| 3. Nc3   | c5   |
| 4. dc5   | bc5  |
| 5. Be3   | d6   |
| 6. Bb5+  | Nd7  |
| 7. Nf3   | e6   |
| 8. 0-0   | a6   |
| 9. Bd7+  | Qd7  |
| 10. Qd3  | Ne7  |
| 11. Rad1 | Rd8  |
| 12. Qc4  | Ng6  |
| 13. Rfe1 | Be7  |
| 14. Qb3  | Qc6  |
| 15. Kh1  | 0-0  |
| 16. Bg5  | Ba8  |
| 17. Be7  | Ne7  |
| 18. a4   | Rb8  |
| 19. Qa2  | Rb4  |
| 20. b3   | f5   |
| 21. Ng5  | fe4  |
| 22. Nce4 | Rf2  |
| 23. Rd6  | Qd6  |
| 24. Nd6  | Rg2  |
| 25. Nge4 | Rg4  |
| 26. c4   | Ne5  |
| 27. h3   | Ng3+ |

- |          |     |
|----------|-----|
| 28. Kh2  | Re4 |
| 29. Qf2  | h6  |
| 30. Ne4  | Ne4 |
| 31. Qf3  | Rb8 |
| 32. Re4  | Rf8 |
| 33. Qg4  | Be4 |
| 34. Qe6+ | Kh8 |
| 35. Qe4  | Rf6 |
| 36. Qe5  | Rb6 |
| 37. Qc5  | Rb3 |
| 38. Qc8+ | Kh7 |

And Black's time had expired.

# GMs do it...

(Continued from previous page.)

- |           |     |
|-----------|-----|
| 20. Bd6   | Qd6 |
| 21. fe4   | de4 |
| 22. Nb7   | Qb6 |
| 23. Be6   | Qe6 |
| 24. Qf2   | Qd5 |
| 25. Nc5   | Nc5 |
| 26. dc5   | Qc5 |
| 27. Qc5   | Rc5 |
| 28. Rad1  | f5  |
| 29. g4    | Rb8 |
| 30. Rf2   | Be5 |
| 31. Nf1   | f4  |
| 32. Re2   | f3  |
| 33. Red2  | Bc7 |
| 34. Ne3   | Bb6 |
| 35. Kf1   | h5  |
| 36. Rd6   | Rg5 |
| 37. h4    | Be3 |
| 38. hg5   | hg4 |
| 39. Rg6+  | Kf7 |
| 40. Rdd6  | Re8 |
| 41. Rdf6+ | Ke7 |

At this point, Lambert offered a draw. Kotov considered a moment and declined, stating that he won with 42. Re6+ Kd7 43. Re8 Ke8 44. Re6+ followed by 45. Re4. Lambert promptly resigned. Later, he realized that if he had played 43. ... g3! instead of Kotov's suggested 43. ... Ke8, Kotov would have had to resign. Would Lambert have found the winning move if he had taken the trouble to play it out? He'll never know.



# Grandmaster Classics

## Larsen-Spassky, Belgrade 1970

Boris Spassky will begin a match with Victor Korchnoi in November to determine a challenger to face world champion Anatoly Karpov next year. If Spassky survives the match with Korchnoi, he will earn a chance to regain the crown he wore from 1969 until 1972, when he was defeated by Robert Fischer in the most publicized match in chess history.

The game that follows was played while Spassky was still world champion. The occasion was the famous match between the USSR and the rest of the world. The match featured 10 boards on each side and lasted four rounds. Final score: USSR 20½, Rest of the World 19½. Spassky, as world champion, played board one, and his opponent was Danish grandmaster Bent Larsen.

### LARSEN'S OPENING B. Larsen - B. Spassky

- |          |       |
|----------|-------|
| 1. P-QN3 | P-K4  |
| 2. B-N2  | N-QB3 |
| 3. P-QB4 | N-B3  |
| 4. N-KB3 |       |

Among modern grandmasters, Larsen is considered the truest follower of Aron Nimzovich. With this move, Larsen heads for a position akin to the Nimzovich variation of the Sicilian with the colors reversed. "However, the QB fianchetto is inferior in that setup, as will be seen. More reliable would have been 4. N-QB3 followed by the fianchetto of the KB which would have yielded a kind of English opening." -- R. Byrne.

A few weeks after this game, Larsen faced Spassky at Leiden and played 4. P-K3. There followed 4. ... P-Q4; 5. PxP, NxP; 6. P-QR3, B-Q3; 7. Q-B2, 0-0; 8. N-KB3, Q-K2; 9. N-B3, NxN; 10. QxN, P-B4; 11. B-N5 with equality.

- |         |      |
|---------|------|
| 4. ...  | P-K5 |
| 5. N-Q4 | B-B4 |
| 6. NxN  | QPxN |

In return for his doubled pawns, Black will put pressure on White's QP which will remain backward on the open Q-file.

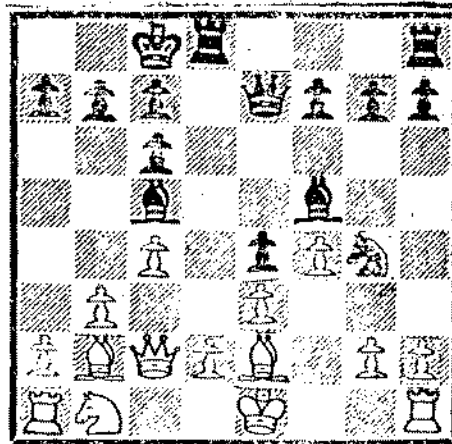
7. P-K3

If 7. P-Q4, PxPep; 8. PxP, B-Q5.

- |                          |       |
|--------------------------|-------|
| 7. ...                   | B-B4  |
| To keep the QP backward. |       |
| 8. Q-B2                  | Q-K2  |
| 9. B-K2                  | 0-0-0 |
| 10. P-B4?                |       |

This weakens White's K-side and gives Black a strong attack. The move was played to meet the threat of N-N5-K4-Q6. A better idea is 10. BxN, QxB; 11. N-B3 with pressure on the KP.

10. ... N-N5!



Position after 10. ... N-N5!

This threatens ... Q-R5ch and various piece sacrifices on K6 and Q7.

11. P-N3

The only move:

If 11. BxN, Q-R5ch; 12. P-N3, QxB, White is dangerously weak on the white squares.

If 11. N-B3, RxP!!; 12. QxR, BxP; 13. Q-B2, B-B7ch and 14. ... N-K6ch wins the queen.

If 11. BxP, KR-N1; 12. B-N2, Q-R5ch; 13. P-N3, NxBP!!; 14. PxB, RxP!!; 15. PxB, QxPch; 16. K-B1, BxP; 17. B-R5, B-R6ch; 18. RxB, Q-N8ch; 19. K-B2, Q-B7 mate.

If 11. O-O, RxP!; 12. NxB, NxBP; 13. Q-B1, NxBch; 14. KxB, Q-R5; 15. Q-K1, QxPch; 16. N-B3, PxB; 17. KBxP, B-Q6ch wins the queen.

11. ... P-KR4

12. P-KR3

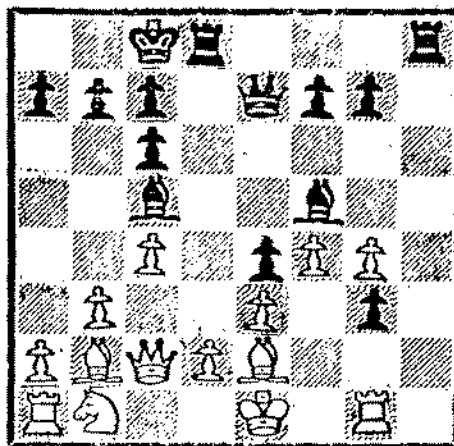
White still cannot play N-B3 because of ... RxP! etc.

12. ... P-R5!!

The winning move.

13. PxB

Larsen took 53 minutes deciding to take the knight. Simplification is no better: 13. BxN, BxB; 14. PxB, PxB; 15. R-N1, R-R8!!; 16. RxR (If 16. K-B1, Q-R5; 17. P-Q4, PxB; 18. Q-N2, QxP!; 19. N-B3, RxRch; 20. KxR, BxPch; 21. K-B1, QxPch; 22. K-K1, B-B7ch; 23. K-Q1, R-K1 and wins.), P-N7; 17. R-N1, Q-R5ch; 18. K-K2, QxPch; 19. K-K1, Q-N6ch; 20. K-K2 (If 20. K-Q1, Q-B7; 21. QxP, QxRch wins.), Q-B6ch; 21. K-K1, B-K2! and wins.



Position after 14. R-N1.

13. ... PxB

14. R-N1

If 14. RxR, RxR; 15. PxB, R-R8ch; 16. B-B1, P-N7.

14. ... R-R8!!

Sacrificing the rook to gain the tempo that gets the pawn to the seventh rank.

15. RxR

If 15. K-B1, RxRch; 16. KxR, Q-R5 and White cannot avoid mate.

15. ... P-N7

16. R-B1

If 16. R-N1, Q-R5ch; 17. K-Q1, Q-R8 wins.

16. ... Q-R5ch

17. K-Q1 PxB(Q)ch

18. Resigns.

After 18. BxQ, BxPch forces mate.

Notes to this game were compiled from Robert Byrne's article in Chess Life of August 1970, and Bernard Cafferty's Spassky's 100 Best Games.

## Playoff dates

The following dates have been set for next spring's league playoffs:

Round one -- May 1 to May 12.

Round two -- May 15 to May 26.

Round three -- May 29 to June 9.

## Seek problem editor

Newman Guttman will not be contributing chess problems to the bulletin this year. Anyone interested in providing chess problems to the bulletin, please contact David Baurac at 739-7711, ext. 5220.

# Algebraic notation

Some of the chess games in this issue are published in English descriptive notation (1. P-K4; ...), and others are published in algebraic notation (1. e4, ...). This is because we publish the games as they are submitted. Because not all league players are familiar with the algebraic system, we have adapted the following explanation from Chess Life and Review, the official magazine of the USCF.

In the algebraic system, the ranks are numbered from 1 to 8, beginning with White's first rank. The files are lettered from a to h, starting with White's QR file. This gives every square a unique designation consisting of a letter, which identifies the file, and a number, which identifies the rank. Pieces are designated as they are in the English descriptive notation, but the letter P, for pawn, is not used. A plus sign (+) indicates check. A colon (:) or an x may be used to indicate a capture, or the sign may be omitted since it is enough to indicate the piece and the square to which it moves. Any enemy piece on that square is assumed captured.

|   |    |    |    |    |    |    |    |    |
|---|----|----|----|----|----|----|----|----|
| 8 | a8 | b8 | c8 | d8 | e8 | f8 | g8 | h8 |
| 7 | a7 | b7 | c7 | d7 | e7 | f7 | g7 | h7 |
| 6 | a6 | b6 | c6 | d6 | e6 | f6 | g6 | h6 |
| 5 | a5 | b5 | c5 | d5 | e5 | f5 | g5 | h5 |
| 4 | a4 | b4 | c4 | d4 | e4 | f4 | g4 | h4 |
| 3 | a3 | b3 | c3 | d3 | e3 | f3 | g3 | h3 |
| 2 | a2 | b2 | c2 | d2 | e2 | f2 | g2 | h2 |
| 1 | a1 | b1 | c1 | d1 | e1 | f1 | g1 | h1 |
|   | a  | b  | c  | d  | e  | f  | g  | h  |

| ALGEBRAIC |      | ENGLISH  |        |
|-----------|------|----------|--------|
| 1. e4     | e5   | 1. P-K4  | P-K4   |
| 2. d4     | ed   | 2. P-Q4  | PxP    |
| 3. c3     | dc   | 3. P-QB3 | PxP    |
| 4. Bc4    | cb   | 4. B-QB4 | PxP    |
| 5. Bb2    | d5   | 5. BxP   | P-Q4   |
| 6. Bd5    | Nf6  | 6. BxQP  | N-KB3  |
| 7. Bf7+   | Kf7  | 7. BxPch | KxB    |
| 8. Qd8    | Bb4+ | 8. QxQ   | B-N5ch |
| 9. Qd2    | Bd2+ | 9. Q-Q2  | BxQch  |
| 10. etc.  |      | 10. etc. |        |

## We need games

Yes, the Chicago Industrial Chess League Bulletin needs games -- copies of your league games to publish. Instructive games and entertaining games. Close games where you systematically squeezed victory out of an infinitesimal advantage, and wild games where you stole victory from the jaws of defeat because your opponent played like a patzer.

We need annotated games and unannotated games, but we will publish the annotated ones first. Submissions do not need to be typewritten, just legible. And if you annotate a game, please tell us who you are so we can give you credit for your notes.

Send submissions to: David Baurac, Editor, CICL Bulletin, 7517 Country Lane South, Darien, Ill. 60559.

# Games of interest

Last season, Roy Benedek won 11 consecutive games on board one for the Argonne Rooks. He was undefeated, rose to become the league's highest rated player and earned the league's Most Valuable Player trophy. The game that follows is his first league loss in more than a year.

This game was the fifth meeting between Benedek and Jim Jackson of the Argonne Bishops. In each previous meeting, Benedek had played White and Jackson Black. Benedek had won twice, lost once, and there had been one draw. Notes by the winner.

## QUEEN'S GAMBIT DECLINED

R. Benedek, ANL Rooks - J. Jackson, ANL Bishops

- |          |       |           |       |
|----------|-------|-----------|-------|
| 1. N-KB3 | P-Q4  | 14. P-B4  | QN-Q4 |
| 2. P-Q4  | N-KB3 | 15. QR-Q1 | B-B3  |
| 3. P-QB4 | P-K3  | 16. K-R1  | P-QN4 |
| 4. N-B3  | QN-Q2 | 17. P-B5  | NxN   |
| 5. P-K3  |       | 18. PxN   |       |

(Closing in his QB. Usually the more aggressive B-KN5 is played before P-K3. - Ed.)

- |         |      |          |      |
|---------|------|----------|------|
| 5. ...  | B-K2 | 18. ...  | B-Q4 |
| 6. B-Q3 | O-O  | 19. Pxp  | Pxp  |
| 7. O-O  | PxP  | 20. B-B2 | Q-K1 |

Black can take several paths at this point. The route chosen weakens White's pawn position, but Black's game remains constricted for a long time.

- |         |      |
|---------|------|
| 8. Bxp  | P-B4 |
| 9. Q-K2 | PxP  |
| 10. Pxp |      |

Else Black will equalize readily.

- |          |      |
|----------|------|
| 10. ...  | N-N3 |
| 11. B-N3 | B-Q2 |
| 12. N-K5 |      |

This powerfully posted knight severely restricts Black for most of the contest.

- |          |      |
|----------|------|
| 12. ...  | R-B1 |
| 13. B-Q2 |      |

13. B-N5, P-KR3; 14. B-KR4, KN-Q4 leads to exchanges welcome to Black.

- |         |       |
|---------|-------|
| 13. ... | P-QR3 |
|---------|-------|

Preparing a Q-side advance. 14. P-QR4 looks good for White and is thematic throughout. Unfortunately for Black, 13. ... B-B3; 14. NxP! is most unpleasant.

The bishop would be useless on QB3, but now the Q-side pawns become weaker.

- |          |      |
|----------|------|
| 18. ...  | B-Q4 |
| 19. Pxp  | Pxp  |
| 20. B-B2 | Q-K1 |

The roof caves in after 20. ... Bxp; 21. RxN!

- |          |  |
|----------|--|
| 21. B-Q3 |  |
|----------|--|

Since White cannot push through P-B4, 21. P-QR4 would have been better here; then, after the exchange of queens, a position with difficulties for both sides arises.

- |         |      |
|---------|------|
| 21. ... | Q-R4 |
|---------|------|

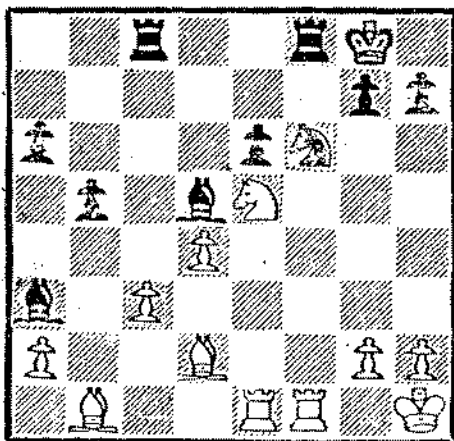
Black is happy to get rid of the women. His queen has been of defensive value only, and she has no prospects for the future.

- |           |      |
|-----------|------|
| 22. QxQ   | NxQ  |
| 23. B-N1  | N-B3 |
| 24. QR-K1 |      |

P-QR4 was impossible for White as long as his rook was at Q1. Now Black prevents the advance by activating another piece which had been little better than a block of wood.

- |          |      |
|----------|------|
| 24. ...  | B-R6 |
| 25. K-N1 | B-N7 |

With both clocks on their last 20 minutes, this is the simplest of the



Position after 27. ... B-R6.

several ways to begin the harvest.

26. N-Q3

The pawn cannot be saved. 26.

R-K3, B-N2, followed by 27. ... N-Q4.  
is worse.

26. ... BxP

27. BxB RxB

28. R-B1

In addition to his other advantages, Black controls the only useful file. The text neutralizes that. 28. N-B4 looks stronger, but after 28. ... B-B5, Black wins easily: 29. NxB, R-K1; 30. N-B7, R-QB1; 31. NxB, BxB; 32. K or RxB, R(1)-B5.

If 29. R-B2??, N-N5.

If 29. R-B3, RxB; 30. PxB, K-B2; and Black need only make mechanical moves.

28. ... KR-B1

29. RxB RxB

30. R-B1 N-K5

31. P-N3 RxB

32. NxB N-Q7

33. Resigns

After the bishop moves, Black has the pleasant choice of which pawn to win next.

### SICILIAN DEFENSE

N. Goncharoff - A. Kornfeld

1. P-K4 P-QB4

2. P-KB4 P-Q3

3. B-N5ch B-Q2

4. BxBch QxB

5. N-KB3 N-QB3

6. P-Q3 P-KN3

7. O-O B-N2

8. P-QR3 N-KB3

9. N-QB3 O-O

10. Q-K1 QR-QB1

11. P-KR3 N-Q5

12. Q-KB2 NxN

13. QxN P-QN4

14. N-K2 N-K1

15. P-QB3 N-QB2

16. B-K3 P-QR4

17. QR-Q1 P-N5

18. RPxP RPxB

19. P-Q4 PxQP

20. BxB PxEP

21. PxB Q-B3

22. P-B5 PxBP

23. QxB N-K3

24. Q-KN4 NxB

25. PxB P-K3

26. K-R1 K-R1

27. P-Q5 Q-Q2

28. PxB PxP

29. N-KB4 QR-K1

30. Q-KR5 R-B3

31. P-K5 R-B4

32. RxB Q-N4

33. N-N6ch K-N1

34. RxB PxN

35. QxB PxR

36. QxB R-KB1

37. Q-K6ch K-R1

38. R-Q1 R-B3ch

39. RxB QxRch

40. K-R2 Q-B5ch

41. K-N1 BxB

42. Q-QB8ch K-R2

43. Q-Q7ch K-R3

44. Q-K6ch Draw

# Tournaments

ALWAYS BRING STAUNTON CHESS SETS AND CLOCKS UNLESS OTHERWISE NOTED.

NOV 4-25: TGIF SWISS

4-SS, 40/1, Chess Mates CC, 517 Dempster Ave., Evanston 60202. Limited to 30 entrants. EF: \$8 (USCF+EF: \$22, jr \$15), if recd by 10/21; \$1 more at site. \$1 off to Chess Mates CC members. \$\$: (based on 16 entries) 30-20, C, D/ below each 15, more per entries. ½-yr Chess Mates mem. to top unr. REG: 7-7:45PM. RDS: 8 each Fri. ENT: Jim Bozzelli, address above.

NOV 5: 2ND ANNUAL ARON NIMZOVITCH MEMORIAL TORNADO

4-SS, 40/1, Lincoln Park CC, 2526 N. Lincoln Ave., Chicago 60614. EF: \$14, under 19 \$12 (mail EF ackn.), if recd by 11/4; \$17 and \$15 at site. \$5 off to LPCC members. \$\$: 75-40, B, C, D/E each 40. REG: 9:39-10:45AM. RDS: 11-1:30-4-6:30. ENT: Lincoln Park CC, address above.

NOV 12: 3RD PROVISO OCTAGON PLUS ONE

3-SS (plus optional game), 40/80, Proviso West HS cafeteria, Harrison and Wolf Rd., Hillside 60162. EF: \$4, \$1 off to ICA members. Trophies to first each octagon; ribbons to 2nd, 3rd. REG: 8-9:30. RDS: 9:30-12:15-3. ENT: Lawrence Stilwell, 14 Ashbel Ave., Hillside, IL 60162.

NOV 13: CMCC 70% RETURN NO. 2

4-SS, 40/1, Chess Mates CC, 517 Dempster Ave., Evanston 60202. Limited to 30 entrants. EF: \$10 (USCF+EF \$24, jr \$17), if recd by 10/30; \$1 more at site. \$1 off to Chess Mates CC mems. \$\$: (based on 16 entries) 40-25, C, D/E/ unr each 17.50. REG: 8-8:45. RDS: 9-12-3-6. ENT: Jim Bozzelli, address above.

(Continued next page.)

## HOW TO READ TOURNAMENT LISTS

CC: Chess Club.

EF: Entry fee.

ENT: Where to send entries.

Include full name, address, USCF rating (state if unrated and estimate strength), USCF identification number and expiration date, name and date of tournament, entry fee and USCF dues if joining or renewing.

HR: Hotel rates. First figure is single rate, second is double-occupancy, etc.

LS: Limited smoking.

NS: No smoking.

Quad: Quadrangular. Players of similar strength are grouped in four-player (or larger) round-robin sections and play only within their section.

Rds: Schedule of games.

Reg: The hours during which players may register at the playing site.

RR: Round robin. Each player meets every other player.

SS: Swiss system. A pairing system in which, generally, players with similar scores are paired.

TL: Time limit.

Unr: Unrated.

USCF+EF: Some organizers give a reduced rate, combining USCF dues and the entry fee.

\$\$: Prizes guaranteed by the sponsor unconditionally. Sometimes prizes are based on the number of entries. Payment of the prize fund is the responsibility of the sponsor only, and not of the USCF.

(Continued from previous page.)

NOV 18-20: CAPABLANCA BIRTHDAY MEMORIAL

5-SS, 40/2, Lincoln Park CC, 2526 N. Lincoln Ave., Chicago 60614. EF: \$22, under 19 \$19 (mail EF ackn), if recd by 11/17; \$26 and \$23 at site; \$5 off to LPCC mems. \$\$: 125-75, A, B, C, D/ E, unr each 60. REG: noon-7PM. RDS: 7:30, 11-4, 11-4. ENT: Lincoln Park CC, address above. ½ pt. bye in rd 1 if req in adv.

NOV 19: 26TH CAISSA OPEN

4-SS, rds. 1-2, 40/1; 3-4, 30/1; Rockford College, 5050E State (Bus US 20), Rockford, IL. EF: \$6 if recd by 11/18, \$8 at site. \$\$: (based on 35 entries) 30-25-20-15, C, D, E/unr each 20, shortest win in # moves 5. REG: 9-9:45AM. RDS: 10-12-2:30-5:30. ENT: David Brown, 204 Irving Ave., Rockford, IL 61103.

NOV 19: MUSTANG ROUNDUP NO. 4

3-SS, 30/1, Cafeteria Rolling Meadows HS, 2901 Central Rd., Rolling Mea-

dows, IL 60008. Open to below 1800 and unr EF: \$3 (USCF+EF \$15, jr \$9) if recd by 11/18; \$1 more at site. SS: (based on 40 entries) 25-15-10, D/E 20-15-10-5, unr 15-10. REG: 8-9AM. RDS: 9:30-1-4:30. ENT: Hugh Persson, 2901 Central Rd., Rolling Meadows, IL 60008. NS

NOV 21-DEC 19: MONDAY NIGHT SWISS

4-SS, 30/1, Northern Ill. CC, Circle Dr., Glendale Heights, IL. EF: \$5 (or \$0, but not eligible for \$\$). \$\$: 60% entry fees returned in prizes. REG: 7:30-8PM. RDS: 8PM each Mon. ENT: Earl Russell, 716 Dickens, Glendale Heights, IL 60137.

NOV 30-DEC 28: LPCC WEDNESDAY NIGHT SWISS

5-SS, 40/2, Lincoln Park CC, 2526 N. Lincoln Ave., Chicago 60614. EF: \$16, under 19 \$13 (mail EF ackn) if recd by 11/29; \$18 and \$15 at site; \$5 off to LPCC mems. \$\$: 75-50, B, C, D/ below each 30. REG: noon-7PM. RDS: 7:30 each Wed. ENT: Lindlun Park CC, address above.

## Games of interest

### SICILIAN DEFENSE

B. Nelson, ANL Knights - J. Gibbs, FNB

|         |      |          |      |             |       |
|---------|------|----------|------|-------------|-------|
| 1. Nf3  | c5   | 15. c3   | Nc6  | 29. g3      | Bd7   |
| 2. e4   | d6   | 16. Rfel | Rac8 | 30. h4      | Bf5   |
| 3. d4   | cd   | 17. a3   | h6   | 31. Re3     | Rc6   |
| 4. Nd4  | Nf6  | 18. Bc2  | Nd4  | 32. Rb4     | e6    |
| 5. Nc3  | g6   | 19. Bd3  | Nb3  | 33. Kg2     | Bg4   |
| 6. Be3  | Bg7  | 20. Rad1 | Nc5  | 34. Rd3     | Rc2+  |
| 7. Be2  | Nc6  | 21. Nc5  | Rc5  | 35. Kg1     | d5    |
| 8. f4   | 0-0  | 22. Bg6  | Bb3  | 36. Rb8+    | Kg7   |
| 9. 0-0  | Qb6  | 23. Bf7+ | Rf7  | 37. Rb4     | Rfc7  |
| 10. Qd2 | Ne4  | 24. Rd4  | Kf8  | 38. a4      | Kf6   |
| 11. Ne4 | Bd4  | 25. Rb4  | Bd5  | 39. Rbb3    | Rc1+  |
| 12. Bd4 | Qd4+ | 26. Rd4  | Bc6  | 40. Kf2     | R7c2+ |
| 13. Qd4 | Nd4  | 27. c4   | b5   | 41. Ke3     | Rel+  |
| 14. Bd3 | Be6  | 28. cb   | Bb5  | 42. Resigns |       |