

# Chicago Industrial Chess League

## BULLETIN

VOLUME 21, NUMBER 2

---

### IN THIS ISSUE

Business meeting report .....	3
Chess news .....	9
Grandmaster classics .....	12
CICL directory .....	15
Games of interest .....	11, 14, 19

---

## President's Report

First, let me extend a warm welcome to the new members of our league. We have six new teams this year. In the East, the new teams are the Metropolitan Correction Center and an alumni team organized by Romas Fabijonas and Ron Dargis (by raiding the EXcaliburs). In the North, IIT is entering a second team. Also joining the North Division are Kemper Insurance and Zenith-Glenview. Joining the Near West is WesCom, a neighbor to ANL. Good luck to all and may your blunders be few!

Fermilab is leaving the league this year after a dismal performance in terms of attendance. The divisional team make-up is as follows:

<u>North</u> (11)	<u>East</u> (10)	<u>Near West</u> (9)	<u>Far West</u> (8)
Curtiss Candy	Alumni	Amoco Oilers	ANL Bishops
EXcaliburs	First Nat'l Bank	ANL Knights	ANL Pawns
IIT #1	GATX	ANL Monarchs	ANL Rooks
IIT #2	Harris Trust	BTL Royals	BTL Dragons
Kemper Ins.	HARZA	CPC	College of DuPage
Motorola	Ill. Bell Tel.	Int'l Harvester	WE-Lisle
Procon	Metro. Corr. Ctr.	WE-Hawthorne	WE-Montgomery
Sara Lee	R.R. Donneley	WesCom	Wheaton College
Signode	Sears #1	Zenith-Rauland	
Teletype	Sears King Ldrs.		
Zenith-Glenview			

### PLAYOFFS

The playoffs this year will be similar to last year's, with one major difference: by popular demand, this year's playoff will be a knockout instead of

(Continued next page.)

# President's report . . .

(Continued from previous page.)

a Swiss. A match ending in a tie will be decided by dropping the result of the bottom board until the tie is broken. In the unlikely event that a match is tied as the result of draws on all six boards, the match will be decided by a coin flip.

Playoff pairings will be determined in the following manner:

A. All eight teams qualifying for the playoffs will be ranked according to their final match-point percentages, with game point percentages being used to break ties.

B. The four first place teams from the divisions will be seeded 1 through 4, according to their rankings.

C. The second place teams will be seeded 5 through 8, according to their rankings.

D. First round pairing will be as follows: 1 plays 5; 2 plays 6; 3 plays 7; 4 plays 8.

E. The second round will be paired in a similar manner with the highest remaining seed playing the third highest and the second highest remaining seed playing the lowest.

F. Every effort will be made to avoid pairing teams from the same division. For example, if in the first round seed 2 and seed 6 are from the same division, then seed 6 and seed 7 will trade places in the pairings, and seed 2 will play seed 7 while seed 3 plays seed 6.

G. Home team will be the top seed if both teams have hosted an equal number of games during the playoffs. Otherwise, the team with the fewer home playoff matches will be the host team. Seeds 1 through 4 will be home teams for the first round.

I would like to take this opportunity to remind all team captains that our rules state that all teams tied for trophies (i.e., teams with the same match-point percentage) must settle the tie by playing a match. The reason for this is to encourage the teams to use some of their weaker players when playing a weaker team. Any teams tied will have one playoff match with all tied teams participating. Any ties remaining after the playoff match can be broken by game-point percentage.

## Deadlines for ratings, bulletin

The deadline for division chairmen to get match results to Terry Andresen is the first of each month. This will give him the week to 10 days he needs to complete the ratings and get them to the bulletin editor in time to make the next bulletin.

Deadline for submissions to the bulletin -- games, chairmen's reports, letters, match results, etc. -- is October 12. Anything received after that date will appear in the following issue.

# Summer meeting minutes

August 23, 1977

1. The meeting was called to order at 7 P.M. at the Hawthorne Savings and Loan by President Greg Berry.
2. The first item of business to be discussed was the permanence of the six-man team organization of the League, which had been adopted at last year's meeting on a one-year trial basis. Jim Brotsos proposed that the League go to all four-man teams. This motion died for lack of a second. It was then moved and seconded that the six-man team arrangement become permanent. This motion carried by a vote of 18-0.
3. Treasurer Doug Anderson presented his report. The League showed a net loss of \$140 last year, due primarily to expenses connected with sponsoring the Arthur Bisquier simultaneous event, higher than normal trophy costs, and a net loss on the annual awards banquet. A net surplus of \$128 remained in the treasury at the end of the season. Six persons who attended the banquet did not pay for their dinners, although this did not cover the full amount of the loss on the banquet.
4. Doug Anderson also presented his budget for the 1977-78 season, based on the assumption that last year's team dues of \$18.00 would continue in force this season. The budget showed a net balance between income and expenditures. Jim Brotsos suggested that dues be increased to at least \$25.00 per team, but this suggestion did not find support. After some discussion it was moved that the dues be raised from \$18.00 to \$20.00 per team, in order to provide for an increase in the League's cash reserve, to provide a cushion for any unanticipated expenditures. This was approved by a vote of 15-3. Further, it was agreed that the 40% dues discount for second and subsequent teams from a single company in a single division be discontinued. Finally, it was moved and seconded that Bulletin subscriptions be priced at \$7.00 for the 1977-78 season. One subscription for teams from a single company would be mandatory. Further subscriptions for individuals on a team, mailed with their team's copy, would be \$3.00 for the season, as would individual

subscriptions for members of alumni teams. This proposal was adopted by a vote of 11-0.

5. The proposed revision of the CICL Policies and Rules, section I, which had been published in the August issue of the CICL Bulletin, was discussed. One sentence, inadvertently omitted from the draft, was restored to section I.B.8, providing that an entire forfeited match would not be counted in determining whether an excessive number of forfeits had prejudiced a team's right to continue in a subsequent CICL season. The amended CICL Policies were approved by a vote of 19-0.
6. Three new teams were approved for League membership:
  - (a) Metropolitan Correction Center - Abe Wilson, captain
  - (b) Kemper Insurance Company - John Van Meer, captain
  - (c) An alumni team in the East Division, captained by Ron DargisBob Oelrich stated that ITT was also considering entering a second team, but definite information would have to be provided later. (Subsequent to the meeting, the second ITT team was admitted to the League, as were teams from Zenith-Glenview and Wescom, Inc.) Finally, it was announced that the Western Electric teams were realigned somewhat, with last season's King's Indians being replaced by a team based at Montgomery, Illinois.
7. The Fermilab team of last year was discussed, since they had exceeded the allowable number of forfeits during the 1976-77 season. The continuing unavailability of a team captain and the extreme difficulties of collecting last year's dues were pointed out. No Fermilab spokesman had attended the meeting to provide explanations. It was agreed that they would be dropped from the League for the coming season.
8. Also discussed was the College of DuPage, whose performance had also been poor in some areas, although insufficient information was available to determine if they had violated the excess forfeits rule. It was agreed that Greg Berry would contact them to see if they planned to participate this season, and if so to see if they could improve their performance. It was pointed out that the use of college students as team members violated the rule that members must be employees of their companies. There was general agreement that further college teams should not be admitted to the League, but that the present two teams should be allowed to continue if they continue to meet all the other standards for member teams. In particular, it was noted that Wheaton College had made a good showing last year, at least in part because of the active participation of

several faculty members on the team. It was suggested that Greg Berry urge the COD team to develop a substantial, continuing faculty or staff participation on the team to provide stability.

9. It was announced that Dan Kumro would be unable to serve as Near West division chairman this year. Mike Dee, of Amoco, volunteered to serve in his place, and was elected by acclamation. Volunteers for Banquet Chairman were requested, but there was no positive response.
10. The championship playoff setup was discussed. It was proposed to change from a Swiss to an elimination set-up, and this was adopted by 19-3. It was agreed that the use of tie-breaking matches for resolving regular divisional trophy winners would be continued.
11. It was proposed that the MVP awards be given to the player in each division scoring the most points for his team on boards one through six during the regular season. In the event of a tie, duplicate awards would be made. There would be no overall League MVP award, due to the differing length of schedules in the different divisions. This proposal was adopted unanimously.
12. New alumni team members were proposed as follows (previous team affiliation is indicated):
  - K.A. Cziernicki (Johnson & Johnson, Bell & Howell)
  - Eduardo Gastelu (First National Bank)
  - Don Danes (Procon)
  - Walt Stephan (Encyclopedia Britannica)
  - Walt Gailus (Continental Can)
  - Algis Litvinas (Austin Company)
  - Ron Dargis (R. R. Donnelley)
  - Romas Fabijonas (Argonne, Interlake)
  - Felix Garza (Continental Can)All these players were approved for future participation as alumni team members, the majority of them being expected to play this season on the new East Division alumni team.
13. Jim Brotsos presented several proposals:
  - (a) A proposal to provide free banquet meals for officers was defeated by a vote of 10-5.
  - (b) A proposal requiring new teams to post a bond equal to one-half of their team dues, to be refunded in the subsequent season, died for lack of a second. It was pointed out that the newly adopted CICL Policies provide for new teams to pay

their dues in full prior to the first match of the season, and this serves much of the purpose of the proposed bond.

- (c) A proposal for advance payment of banquet ticket fees was discussed, but it was decided to publish the proposal in the Bulletin to allow teams to discuss it among themselves, and to act on it at the spring League meeting.
- (d) A proposal to compile a 25-year anniversary commemorative book was discussed. It was agreed to appoint a committee, chaired by Jim Brotsos, to study possible formats, costs, and methods for paying for such a book. Brotsos would select interested League members for the committee.

12. In the absence of further business, the meeting was adjourned at 9:40 P.M.

Respectfully submitted,

*Charles E. W. Ward*

Charles E. W. Ward  
Secretary

Attendees: Joe Brozovich - WE Kingsmen  
Karl Dobr - WE Chargers  
Jim Hoelke - Zenith-Rauland  
Nik Goncharoff - Motorola  
Jim Brotsos - EXcaliburs  
Bob Oelrich - ITT  
Jerry DesJardins - CPC International  
Tom Gaffigan - First National Bank  
Abe Wilson - Metropolitan Corrections Center  
Mark Tang - UOP/Procon  
John Van Meer - Kemper Insurance  
Bob Motycka - International Harvester  
Dave Baurac - ANL Rooks  
Steven Huff - Signode  
Mike Dee - Amoco  
Ron Dargis - Alumni  
Doug Anderson - Bell Labs Royals (Treasurer)  
Charles Ward - ANL Knights (Secretary)  
Greg Berry - ANL Knights (President)

# Treasurer's report

At the league's business meeting, treasurer Doug Anderson presented the following estimate of the league's budget and accounting of league finances:

## BUDGET

	1975-76 <u>Actual</u>	1976-77 <u>Actual</u>	1977-78 <u>Budget</u>
<u>ASSETS</u> from previous year	\$169.35	\$268.00	\$128.13
<u>INCOME</u>			
Dues	580.80	576.00	580.00
Bulletin	208.00	175.50	200.00
Miscellaneous	<u>-</u>	<u>23.98</u>	<u>20.00</u>
	\$788.80	\$775.48	\$800.00
<u>EXPENSES</u>			
Bulletin	183.99	156.28	200.00
Tornado	43.70	1.53	50.00
Banquet	81.80	109.05	100.00
Trophies and awards	307.62	429.11	350.00
Gift to rating chairman	30.00	30.00	30.00
Miscellaneous matches	-	140.00	50.00
USCF and ICA dues	30.00	-	-
Miscellaneous	<u>13.04</u>	<u>49.38</u>	<u>20.00</u>
	\$690.15	\$915.35	\$800.00
<u>NET GAIN</u>	\$98.65	-\$139.87	\$0.00

## 1976-1977 FINANCIAL STATEMENT

<u>ASSETS</u> from previous year	\$268.00
<u>INCOME</u>	
Dues (29teams@18.00)	\$522.00
(5teams@10.80)	54.00
Bulletin (27teams@6.00)	162.00
(misc. subscriptions)	13.50
Interest from savings account	<u>23.98</u>
TOTAL	\$775.48

## EXPENSES

Bulletin	\$2.36
paper	12.08
envelopes	84.34
postage	7.50
news article - Bill Goichberg	50.00
gift to typist	1.53
Tornado	109.05
Banquet	429.11
Trophies and awards	140.00
Simultaneous - Arthur Bisquier	30.00
Gift to rating chairman	-
USCF and ICA dues	46.13
Miscellaneous expenses for officers	<u>3.25</u>
Miscellaneous	

TOTAL \$915.35

SURPLUS for next year

\$128.13

---

## Playoff dates

The following dates have been for next spring's league playoffs  
Round one -- May 1 to May 12  
Round two -- May 15 to May 21  
Round three -- May 29 to Jun

## Seek problem editor

Newman Guttman will not be submitting chess problems to the CIGI Bulletin this year. Consequently have an opening for a problems editor.

Anyone interested in providing regular chess problems column to bulletin, please contact David Bar at 739-7711, ext. 5220.

## We need games

Yes, the Chicago Industrial Chess League Bulletin needs games -- copies of your league games to publish. Instructive games and entertaining games. Close games where you systematically squeezed victory out of an infinitesimal advantage, and wild games where you stole victory from the jaws of defeat because your opponent played like a patzer.

We need annotated games and unannotated games, but we will publish the annotated ones first. Submissions do not need to be typewritten, just legible. And if you annotate a game, please tell us who you are so we can give you credit for your notes.

Send submissions to: David Baurac, Editor, CIGI Bulletin, 7517 Country Lane South, Darien, Ill. 60559.



# CHESS NEWS

## Candidates Matches

### Spassky, Korchnoi advance to finals

Boris Spassky of the USSR and Victor Korchnoi, recently defected from that nation, have advanced to the final candidates' match. The two will meet later this year in a match to determine a challenger for Anatoly Karpov's world championship.

Korchnoi defeated former compatriot Lev Polugaevsky,  $8\frac{1}{2}$  to  $4\frac{1}{2}$ , at Evian, France, while Spassky was downing Hungary's Lajos Portisch, 8 to  $6\frac{1}{2}$ , at Geneva, Switzerland.

Korchnoi made quick work of Polugaevsky, winning the first three games, drawing the next two and then winning games six and seven. After Polugaevsky won the eighth game -- his only victory in the match -- Korchnoi settled down and drew the next five games for the  $8\frac{1}{2}$  points he need for victory.

Spassky had a more difficult time against Portisch. After falling behind by a point in the early rounds, he pulled even, and the match was still tied after 12 games.

Spassky found a surge of energy that gave him the lead 7 to 6 after he won the 13th game.

Conducting the black pieces in the 14th game, he outplayed Portisch in the first session and needed an hour after the adjournment to force Portisch to resign after 54 moves.

In the 15th game, Spassky again played White. He soon gained the initiative and won a pawn. On the 30th move, Portisch offered a draw, realizing it would give Spassky the  $8\frac{1}{2}$

points needed for victory, and Spassky gladly accepted.

Games from the matches follow.

Spassky - Portisch, Evian 1977

#### Ninth Match Game

Ruy Lopez

- |          |       |
|----------|-------|
| 1. P-K4  | P-K4  |
| 2. N-KB3 | N-QB3 |
| 3. B-N5  | P-QB3 |
| 4. B-R4  | N-B3  |
| 5. O-O   | B-K2  |
| 6. R-K1  | P-QN4 |
| 7. B-N3  | P-Q3  |
| 8. P-B3  | O-O   |
| 9. P-KR3 | N-N1  |

The Breyer or Retreat Variation. It is Spassky's favorite when he plays the black side of the Ruy. He lost  
(Continued next page.)

### Fischer-Korchnoi ?!

The Chicago Sun-Times reported that Victor Korchnoi planned to meet with former world champion Robert Fischer to discuss a possible match between the two.

The discussion was scheduled for early this month during Korchnoi's visit to the USA after defeating Lev Polugaevsky in the candidates matches to determine a challenger for world champion Anatoly Karpov.

The first hurdle to a Fischer-  
(Continued next page.)

# Matches...

(Continued from previous page.)

the third match game when he failed to establish any initiative against Portisch's Breyer.

- |           |       |
|-----------|-------|
| 10. P-Q4  | QN-Q2 |
| 11. QN-Q2 | B-N2  |
| 12. B-B2  | R-K1  |
| 13. N-B1  | B-KB1 |
| 14. N-N3  | P-N3  |
| 15. P-QR4 |       |

Threatening to open the QR file with a later Pxp. In the third game, Spassky attacked along the QR file after closing the center.

- |          |      |
|----------|------|
| 15. ...  | P-B4 |
| 16. P-Q5 |      |

Closing the center, as in the third game.

# Fischer-Korchnoi...

(Continued from previous page.)

Korchnoi match was cleared in August when West German financier Wilfried Hilgert, who is sponsoring Korchnoi, met Fischer's demand for a \$3 million purse.

Korchnoi was reported as saying, "As a provisional date (for the match), we are thinking about February 1978."

That date falls between Korchnoi's final candidates match with Boris Spassky, scheduled for later this year, and the survivor's match with the champion, scheduled for the middle of 1978.

Add this paragraph from the Chicago Sun-Times of Friday, September 16:

In East Detroit, Mich., defected Soviet chess grand master Victor Korchnoi (sic) said he and deposed world champion Bobby Fischer have talked about the possibility of a \$350,000 match in West Germany. Not a bad price for a nontitle match.

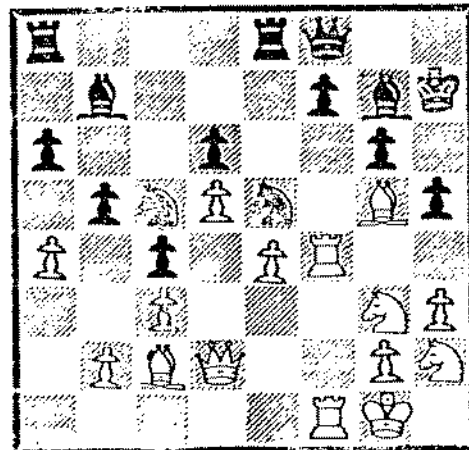
- |          |      |
|----------|------|
| 16. ...  | P-B5 |
| 17. B-N5 | P-R3 |
| 18. B-K3 | N-B4 |
| 19. Q-Q2 | K-R2 |
| 20. N-R2 |      |

This time Spassky eschews the QR file in favor of a K-side attack. This move clears the advance of the KB pawn.

- |           |       |
|-----------|-------|
| 20. ...   | B-N2  |
| 21. R-KB1 | P-KR4 |
| 22. P-B3  | Q-K2? |

This permits the following pin and forces Portisch to use time to break it. A better try was 22. ... KN-Q2.

- |            |       |
|------------|-------|
| 23. B-N5   | Q-B1  |
| 24. P-B4   | KPxP  |
| 25. RxP    | KN-Q2 |
| 26. QR-KB1 | N-K4  |



Position after 26. ... N-K4.

Spassky appears to have the initiative on the K-side, but how is he to continue when the black knights occupy such strong points on QB4 and especially on K4? Spassky has the answer.

- |           |      |
|-----------|------|
| 27. NxP11 | PxN  |
| 28. Q-K2  | Q-R1 |

Useless is 28. ...P-B3; 29. QxPch, K-N1; 30. BxP, BxB (30. ... Q-B2; 31. QxQch, NxQ; 32. R-N4 recovers the piece and wins.); 31. RxB, Q-N2; 32. R(1)-B5 and there is no defence to 33. R-N5.

If 28. ...B-R3; 29. QxP, and there is no defense to 30. RxPch.

If 28. ...N(B4)-Q6; 29. QxPch, K-N1; 30. R-R4, P-B3; 31. Q-R7ch, K-B2;

32. RxPch.  
 29. R-R4 K-N3  
 If 29. ... K-N1; 30. RxRP, regain-  
 ing the material and maintaining mating  
 threats.  
 30. B-Q1! P-B4  
 Not 30. ... KxB, because of 31.  
 Q-KB2!, B-QB1; 32. Q-N3ch, N-N5; 33.  
 PxN, B-K4; 34. N-B3ch, K-N3; 35. PxPch,  
 K-R2; 36. NxB, QxN; 37. RxPch, K-R1;  
 38. Q-N6, followed by 39. R-R7 mate.  
 31. RxBP R-KB1  
 32. QxPch QxQ  
 33. BxQch K-R2

34. B-B7ch B-R3  
 35. RxBch K-N2  
 36. B-B6ch! KxB  
 If 36. ... KxR?; 37. R-R5 mate.  
 37. BxNch K-K1  
 38. RxRch KxR  
 39. BxPch K-N2  
 40. N-N4 Resigns  
 The game might have finished 40.  
 ... NxKP; 41. B-K5ch, K-B2; 42. R-R7ch,  
 followed by 43. RxB.

(Notes from Robert Byrnes in the  
 New York Times.)

QUEEN'S GAMBIT DECLINED  
 Korchnoi - Polugaevsky  
 Seventh match game

1. P-QB4	N-KB3	16. PxP	N-N5	31. R-KB6	B-B4
2. N-QB3	P-K3	17. B-Q4	P-K4	32. P-QN3	B-Q5
3. N-B3	P-Q4	18. P-KR3	PxB	33. NxB	QxN
4. P-Q4	P-B3	19. PxN	RxP	34. RxPch	BxR
5. P-K3	QN-Q2	20. Q-Q2	P-QR4	35. QxBch	K-R1
6. B-Q3	PxP	21. QR-B1	Q-Q2	36. Q-R6ch	K-N1
7. BxBP	P-QN4	22. RxR	BxR	37. P-K6	Q-K5
8. B-Q3	B-N2	23. P-N5	PxP	38. PxPch	RxP
9. 0-0	P-N5	24. QxKNP	Q-K2	39. Q-KB6	Q-N8ch
10. N-K4	B-K2	25. Q-R5	P-N3	40. K-R2	Q-R2ch
11. NxNch	NxN	26. Q-R6	Q-B3	41. K-N3	Q-Q6ch
12. P-K4	0-0	27. B-B4	P-Q6	42. P-B3	QxB
13. Q-B2	P-KR3	28. P-K5	Q-B4	43. Q-Q8ch	Resigns
14. B-K3	R-B1	29. RxP	B-K5		
15. KR-K1	P-B4	30. R-Q6	Q-N5		

## Games of interest

### KING'S GAMBIT

K. Feiler, FNB - C. Ward, ANL Knights

1. P-K4	P-K4	11. RxP	QN-R4	21. Q-B2	BxPch
2. P-KB4	PxP	12. Q-R4ch	N-B3	22. BxB	RxB
3. N-KB3	P-Q3	13. P-Q5	P-QR3	23. QxQ	RxQ
4. B-B4	P-KR3	14. PxN	P-QN4	24. N-N4	R-B5
5. P-Q4	P-KN4	15. BxNP	Q-K4	25. R-KN1	K-K2
6. 0-0	N-QB3	16. RxN	BxR	26. P-R5	QR-KN1
7. P-QB3	B-N2	17. N-R3	R-KN1	27. N-QB2	RxN
8. P-KR4	Q-K2	18. B-Q3	B-R6	28. RxR	RxR
9. N-R2	N-B3	19. B-B1	Q-Q4ch	29. N-Q4	BxN

# Grandmaster Classics

## Capablanca-Marshall, New York 1918

Before Bobby Fischer, the name of no chess master was better known to the non-chess-playing public than that of Jose Raoul Capablanca (1888-1942). Capablanca learned the moves at the age of four in his native Havana. During the second half of the 19th century, the city was a hotbed of chess activity. Growing up in such an atmosphere, the child Capablanca learned to play chess the way other children learn to speak. He was world champion from 1921 to 1927 and is generally considered the greatest natural player in chess history.

Capablanca could penetrate the most complex positions intuitively and reduce a position to its bare essentials by quickly swapping off all superficial material. Because of this, he acquired such a reputation as a positional master that his great tactical ability often went unappreciated. His tactical mastery is best revealed in his games against the great attacking players of his time. In the game that follows -- probably the best known of his career -- Capablanca faced America's greatest player of the first three decades of the 20th century.

RUY LOPEZ

Capablanca - Marshall  
New York 1918

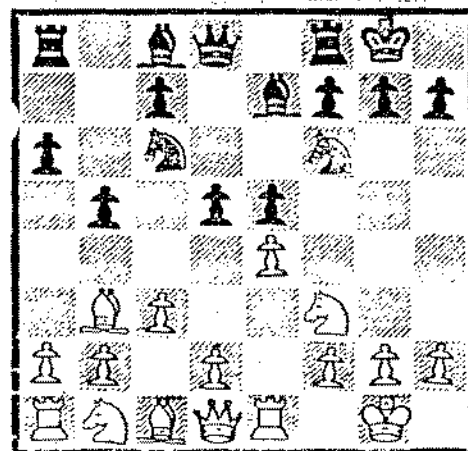
1. P-K4            P-K4  
2. N-KB3        N-QB3

8. P-B3            P-Q4!?

This was the first of three surprises Marshall had for Capablanca within the first eight moves. In 1909 Marshall had lost a match with the 21-year-old Capablanca by the score of 8 to 1 with 15 draws. Soon after the match, Marshall discovered the innovation he would unveil in this game. For eight years, he played the Petroff Defense (2. ... N-KB3) while secretly studying his discovery and awaiting another meeting with Capablanca.

3. B-N5            P-QR3  
4. B-R4            N-B3  
5. O-O            B-K2  
6. R-K1            P-QN4  
7. B-N3            O-O

The second surprise. The usual move was and is 7. ... P-Q3. Not sure what to expect next, Capablanca continued in customary fashion to prepare P-Q4.



Position after 8. ... P-Q4!?

The third surprise. This move introduces the Marshall Attack. In a move considered sound by present theory, Black offers White a pawn in re-

turn for a dangerous K-side attack. In the late 1960s, grandmasters Geller, Spassky and Tal all played the Marshall Attack with the black pieces. Capablanca saw that capturing the pawn would open him to a violent onslaught, but felt that under the circumstances to decline would be unworthy.

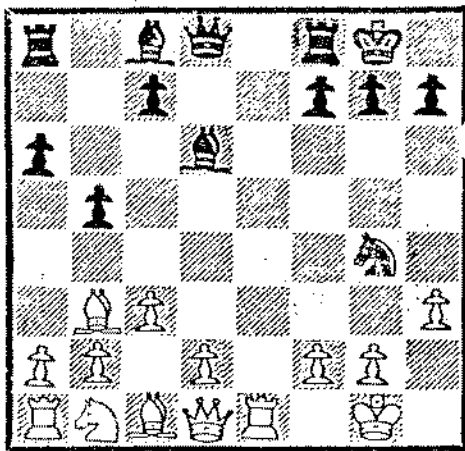
- |         |      |
|---------|------|
| 9. PxP  | NxP  |
| 10. NxP | NxN  |
| 11. RxN | N-B3 |

Today, 11. ... P-B3! is considered best. The main line runs 12. P-Q4, B-Q3; 13. R-K1, Q-R5; 14. P-N3, Q-R6; 15. B-K3, B-KN5; 16. Q-Q3, QR-K1; 17. N-Q2, and now Black can chose between 17. ... R-K3 and 17. ... P-KB4.

- |          |      |
|----------|------|
| 12. R-K1 | B-Q3 |
|----------|------|

Black's bishops, knight and queen stand ready to attack the white king, while White's Q-side is entirely undeveloped and cannot join in the defense for some time.

- |           |       |
|-----------|-------|
| 13. P-KR3 | N-N5! |
|-----------|-------|



Position after 13. ... N-N5!

White cannot take the knight. If 14. PxN, Q-R5; 15. Q-B3, B-R7ch! (In a rare tactical oversight, Capablanca incorrectly recommended 15. ... Q-R7ch; 16. K-B1, BxP; 17. QxB, Q-R8ch; 18. K-K2, QR-K1ch "and wins." But victory belongs to White after 19. B-K6!!, RxB; 20. QxR.); 16. K-B1, BxP with a strong attack. 17. R-K4 fails against 17. ... B-B5! If 17. Q-K4!, B-B5!; 18. P-N3, Q-R7!; 19. R-K3,

QR-K1; 20. Q-Q5, BxP!; 21. RxB, B-K7ch and Black should mate after 22. K-K1, B-B6ch.

- |           |       |
|-----------|-------|
| 14. Q-B3  | Q-R5  |
| 15. P-Q4! | NxP!? |
| 16. R-K2  |       |

Not 16. QxN, because of 16. ... B-R7ch!; 17. K-B1, B-N6; 18. Q-K2, BxP!; 19. PxB, QR-K1; 20. B-K3 (If 20. QxR, QxPch, and mate follows.), BxR; 21. QxB, QxPch; 22. K-B2, Q-R5ch; 23. K-B1, QxQch; 24. KxQ, RxBch; 25. K-B2, KR-K1

Wade and Hartman favor 16. B-Q2!, followed by 16. ... B-N2!; 17. QxB, N-Q6; 18. R-K2, Q-N6; 19. K-B1, Q-R7; 20. P-N4!, QxPch.

- |         |       |
|---------|-------|
| 16. ... | B-KN5 |
|---------|-------|

Tartakover recommended 16. ... N-N5. He considered White's best reply to be 17. R-K8, N-B3; 18. RxRch, KxR; 19. N-Q2 (Not 19. QxR??, Q-K8 mate.), R-N1; 20. N-B1 with approximate equality.

Wade and Harding suggest "the interesting and complicated" 17. QxR!?, Q-N6; 18. PxN, Q-R7ch; 19. K-B2!, Q-R5ch!; 20. K-K3, B-B5ch; 21. K-Q3, B-B4ch; 22. PxB, RxQ; 23. B-Q5 with a small advantage for White.

- |         |  |
|---------|--|
| 17. PxB |  |
|---------|--|

If 17. QxN, B-N6; 18. Q-B1, BxR; 19. QxB, QR-K1 wins.

- |         |        |
|---------|--------|
| 17. ... | B-R7ch |
|---------|--------|

If 17. ... NxP?; 18. B-KB4.

- |          |        |
|----------|--------|
| 18. K-B1 | B-N6   |
| 19. RxN  | Q-R8ch |
| 20. K-K2 | BxR    |

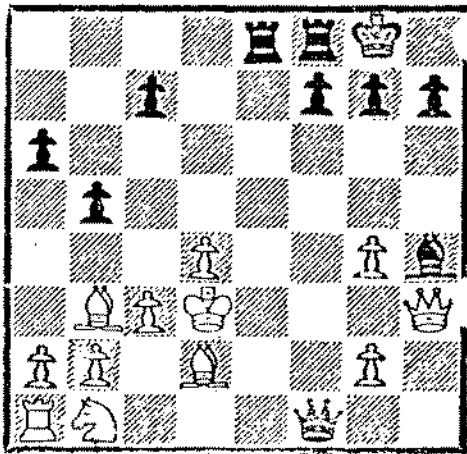
On 20. ... QxB, Tartakover recommends 21. QxB, QxPch; 22. K-Q3, QxR; 23. K-B2, P-N5; 24. P-N5!, PxP; 25. QxP(B3), QxQch; 26. NxQ with a won ending for White.

Euwe, however, recommends a different reply to 20. ... QxB: 21. R-B1!, QxPch; 22. N-Q2, and White can meet 22. ... QR-K1ch with 23. K-Q3 and win with his material advantage.

- |          |         |
|----------|---------|
| 21. B-Q2 | B-R5    |
| 22. Q-R3 | QR-K1ch |
| 23. K-Q3 | Q-B8ch  |

JOIN USCF

# JOIN USCF



Position after 23. ... Q-B8ch.

White has now survived the worst of the attack.

24. K-B2                      B-B7

"Black seeks in vain to find fresh points of contact for his attack." -- Euwe.

25. Q-B3                      Q-N8

Capablanca said Black's best chance was 25. ... R-K7; 26. N-R3!, RxBch; 27. KxR, QxR; 28. QxB, QxPch; 29. N-B2, P-B4; 30. B-Q5 with a difficult win for White.

26. B-Q5                      P-B4  
 27. PxP                      BxP  
 28. P-N4  
 Preparing the liberating 29th move.  
 28. ...                      B-Q3  
 29. P-R4  
 Bringing his rook into the game.  
 29. ...                      P-QR4  
 This gives White a strong passed pawn, but other moves give him the QR file.

30. RPxP                      PxP  
 Black is still trying to open lines to the enemy king.

31. R-R6                      PxP  
 32. NxP                      B-N5  
 33. P-N6

White takes the initiative and Black's game quickly collapses.

33. ...                      BxN  
 34. BxB                      P-R3  
 If 34. ... R-K6; 35. QxPch!  
 35. P-N7                      R-K6

At this point Capablanca announced mate in five: 36. BxPch, RxB; 37. P-N8(Q)ch, K-R2; 38. RxPch, KxR; 39. Q-R8ch, K moves; 40. Q(8)-R5 mate.

Notes to this game were compiled from Max Euwe's The Development of Chess Style, Fred Reinfeld's The Immortal Games of Capablanca and R.G. Wade and T.D. Harding's The Marshall Attack.

## Games of interest

### RETI OPENING

F. House, BTL Dragons - W. Leong, FNB

- |          |       |           |       |             |        |
|----------|-------|-----------|-------|-------------|--------|
| 1. P-QB4 | N-KB3 | 10. NxN   | NxPch | 19. QxBP    | R-K8ch |
| 2. N-KB3 | P-K3  | 11. QxN   | PxN   | 20. B-B1    | RxBch  |
| 3. P-KN3 | B-K2  | 12. B-K3  | R-K1  | 21. K-N2    | QxQ    |
| 4. B-N2  | O-O   | 13. Q-Q2  | R-N1  | 22. RxQ     | RxR    |
| 5. O-O   | N-QB3 | 14. P-QN3 | B-R3  | 23. RxB     | P-R3   |
| 6. N-QB3 | P-Q4  | 15. KR-B1 | B-N5  | 24. RxP     | B-Q3   |
| 7. PxB   | PxB   | 16. Q-Q1  | Q-Q3  | 25. B-Q2    | RxNP   |
| 8. P-Q4  | N-K5  | 17. B-B4  | Q-Q2  | 26. Resigns |        |

# CICL directory

## President

Greg Berry 739-7711 x5056  
Bldg. 335  
Argonne National Laboratory  
9700 S. Cass Ave.  
Argonne, Ill. 60439

## Secretary

Charles Ward 739-7711 x3181  
Bldg. 362  
Argonne National Laboratory  
9700 S. Cass Ave.  
Argonne, Ill. 60439

## Treasurer

Doug Anderson 690-2538  
Room IH 2G417  
Bell Telephone Laboratories  
Warrenville and Naperville Rds.  
Naperville, Ill. 60540

## Rating chairman

Terry Andresen 878-7768  
Sears, Roebuck and Co.  
Dept. 704-3, 48-47  
Sears Tower  
Chicago, Ill. 60684

## Bulletin editor

David Baurac 739-7711 x5220  
7517 Country Lane South  
Darien, Ill. 60559

## EAST DIVISION

### Chairman

Tom Gaffigan 732-3988  
16th Floor  
#1 First National Bank  
Chicago, Ill. 60670

### Alumni

Ron Dargis 482-9393  
Sherwin Williams Co.  
Container Div. Tech. Center  
5325 Ninth Ave.  
Countryside, Ill. 60525

## First National Bank

Tom Gaffigan 732-3988  
16th Floor  
#1 First National Bank  
Chicago, Ill. 60670

## GATX Corp.

George Vivian 621-6552  
GATX Corp.  
20th Floor  
120 S. Riverside Plaza  
Chicago, Ill. 60606

## Harris Trust and Savings

Mark Ertel 461-6952  
Harris Trust and Savings  
Bldg. 311-9  
111 W. Monroe  
Chicago, Ill. 60690

## Harza Engineering

Mike Stevanovic 855-7040  
Harza Engineering  
14th Floor  
150 S. Wacker  
Chicago, Ill. 60606

## Illinois Bell Telephone

Erv Sedlock 383-6033  
Illinois Bell Telephone  
225 W. Randolph  
Chicago, Ill. 60606

## R.R. Donneley and Sons

George Dobbins 326-8237  
R.R. Donneley and Sons  
Bldg. 8-1  
2223 S. King  
Chicago, Ill. 60616

## Sears, Roebuck and Co.

Terry Andresen 875-7768  
BSC 52-11  
Sears Tower  
Chicago, Ill. 60684

NORTH DIVISION

Chairman

Lee Stensaker 764-6100 x2412  
Signode Corp.  
3650 W. Lake Ave.  
Glenview, Ill. 60025

Curtiss Candy

Ainis Mengelis 766-7850 x324  
Curtiss Candy  
3401 Mt. Prospect Road  
Franklin Park, Ill. 60131  
Alt: Larry Satsaitis 766-7850 (page)

EXcaliburs

Jim Brotsos 399-3000 x435  
National Can Co.  
8101 W. Higgins Rd.  
Chicago, Ill. 60631  
Alt: Ed Buerger 251-3843

ITT #1

Warren Kreckler 297-5320 x403  
ITT  
2000 S. Wolf Rd.  
Des Plains, Ill. 60016  
Alt: Bob Oelrich 297-5320 x348

ITT #2

Pete Rotton 297-5320 x364  
ITT  
2000 S. Wolf Road  
Des Plains, Ill. 60016  
Alt: Howard Posner 297-5320 x414

Kemper Insurance

John Van Meer 540-2296  
Kemper Insurance  
541 N. Prairie  
Mundelein, Ill 60060  
Alt: Hal Barber 540-2562

Motorola

Nick Goncharoff 576-2627  
Motorola  
1299 E. Algonquin Rd.  
Schaumburg, Ill. 60196  
Alt: Joe Hennig 576-2640

Procon

David Stuhlbarg 391-3841  
Procon  
1111 S. Mt. Prospect Rd.  
Des Plains, Ill. 60018  
Alt: Adam Stys 391-3650

Sara Lee

Ned Anderson 945-2525 x2356  
Sara Lee  
500 N. Waukeegan Rd.  
Deerfield, Ill. 60015  
Alt: Frank Szatmary 945-2525 x2553

Signode

Lee Stensaker 724-6100 x2412  
Signode Corp.  
3650 W. Lake Ave.  
Glenview, Ill. 60025  
Alt: Steve Huff 724-6100 x2780

Teletype

Frank Tegel 982-3492  
Teletype  
5555 W. Touhy  
Skokie, Ill. 60025  
Alt: Russ Titus 982-3496

Zenith

Phil Miller 391-7674  
Zenith Corp.  
1000 N. Milwaukee Ave.  
Glenview, Ill. 60025  
Alt: Ron Schulman 391-7675

NEAR WEST

Chairman

Mike Dee 420-4644  
Bldg. 601  
Amoco Research Center  
Warrenville Road  
Naperville, Ill. 60540

Argonne Knights

George Kinsella 739-7711 x4018  
Bldg. 301  
Argonne National Laboratory  
9700 S. Cass Ave.  
Argonne, Ill. 60439  
Alt: Greg Berry 739-7711 x5056



Argonne Monarchs

Ken Kellogg 739-7711 x5069  
Bldg. 362  
Argonne National Laboratory  
9700 S. Cass Ave.  
Argonne, Ill. 60439  
Alt: Dwight Kucera 739-7711 x3871

BTL Royals

Fred Salomon 690-3331  
Room 2G413  
Bell Telephone Laboratories  
Warrenville and Naperville Rds.  
Naperville, Ill. 60540  
Alt: Doug Anderson 690-3275

CPC International

Joe Desjardins 458-2000 x501  
Moffett Technical Center  
Box 345  
Argo, Ill. 60501  
Alt: Ray Wright 458-2000 x382

International Harvester

Bob Motyka 887-3746  
International Harvester  
7 S 600 County Line Road  
Hinsdale, Ill. 60521  
Alt: Ted Owens 887-2247

Western Electric Chargers

Vernon Stamm 494-2576  
Western Electric  
Dept. 4938  
Hawthorne Station  
Chicago, Ill. 60623  
Alt: Kurt Kimbler 494-2082

WesCom

Don Graft 971-2010 x314  
WesCom Inc.  
8245 Lamont Road  
Downers Grove, Ill. 60515  
Alt: Bob Medinger 971-2010 x314

Zenith-Rauland

Jim Roelke 345-4700 x2330  
Zenith-Rauland  
2407 W. North Ave.  
Melrose Park, Ill. 60160  
Alt: Herb Tomlinson 345-4700 x2659

Amoco

Ed Lambers 420-5988  
Amoco Research Center  
Bldg. 501  
Mail Station D2  
Box 400  
Naperville, Ill. 60540

FAR WEST

Chairman

Joe Brozovich 690-5718  
Western Electric  
Room 6B323  
Bell Telephone Laboratories  
Warrenville and Naperville Rds.  
Naperville, Ill. 60450

Argonne Bishops

Les Shirkey 739-7711 x3839  
Bldg. 362  
Argonne National Laboratory  
9700 S. Cass Ave.  
Argonne, Ill. 60439  
Alt: Jim Daley 739-7711 x4662

Argonne Pawns

David Green 739-7711 x2580  
Bldg. 205  
Argonne National Laboratory  
9700 S. Cass Ave.  
Argonne, Ill. 60439

Argonne Rooks

Jim Barhorst 739-7711 x3217  
Bldg. 212  
Argonne National Laboratory  
9700 S. Cass Ave.  
Argonne, Ill. 60439

Bell Telephone Dragons

Jim Sobun 690-4609  
Room 6D207  
Bell Telephone Laboratories  
Warrenville and Naperville Rds.  
Naperville, Ill. 60540  
Alt: Joe Rosen 690-4545

College of DuPage  
 Tom Schmidt 858-2800 x2233  
 Student Activities Center  
 College of DuPage  
 Lambert Rd. and 22nd St.  
 Glen Ellyn, Ill.

Western Electric Montgomery  
 Don Finley (Call alt.)  
 Western Electric Co.  
 South River Street  
 Aurora, Ill. 60507  
 Alt: Lou Parker 859-4365

Western Electric Kingsmen  
 Joe Blazie 983-3177  
 Western Electric Co.  
 4513 Western Ave.  
 Lisle, Ill. 60532  
 Alt: Bob Harringer 983-3623

Wheaton College  
 Beryl Price 682-5013  
 Wheaton College  
 720 N. Washington  
 Wheaton, Ill. 60187

## Algebraic notation

Some of the chess games in this issue are published in English descriptive notation (1. P-K4, ...), and others are published in algebraic notation (1. e4, ...). This is because we publish the games as they are submitted. Because not all league players are familiar with the algebraic system, we have adapted the following explanation from Chess Life and Review, the official magazine of the USCF.

In the algebraic system, the ranks are numbered from 1 to 8, beginning with White's first rank. The files are lettered from a to h, starting with White's QR file. This gives every square a unique designation consisting of a letter, which identifies the file, and a number, which identifies the rank. Pieces are designated as they are in the English descriptive notation, but the letter P, for pawn, is not used. A plus sign (+) indicates check. A colon (:.) or an x may be used to indicate a capture, or the sign may be omitted since it is enough to indicate the piece and the square to which it moves. Any enemy piece on that square is assumed captured.

8	a8	b8	c8	d8	e8	f8	g8	h8
7	a7	b7	c7	d7	e7	f7	g7	h7
6	a6	b6	c6	d6	e6	f6	g6	h6
5	a5	b5	c5	d5	e5	f5	g5	h5
4	a4	b4	c4	d4	e4	f4	g4	h4
3	a3	b3	c3	d3	e3	f3	g3	h3
2	a2	b2	c2	d2	e2	f2	g2	h2
1	a1	b1	c1	d1	e1	f1	g1	h1
	a	b	c	d	e	f	g	h

ALGEBRAIC		ENGLISH	
1. e4	e5	1. P-K4	P-K4
2. d4	ed	2. P-Q4	PxP
3. c3	dc	3. P-QB3	PxP
4. Bc4	cb	4. B-QB4	PxP
5. Bb2	d5	5. BxP	P-Q4
6. Bd5	Nf6	6. BxQP	N-KB3
7. Bf7+	Kf7	7. BxPch	KxB
8. Qd8	Bb4+	8. QxQ	B-N5ch
9. Qd2	Bd2+	9. Q-Q2	BxQch
10. etc.		10. etc.	

# Games of interest

## CENTER COUNTER GAMBIT

D. Wilson, BTL Dragons - R. Oelrich, ITT

1. e4	d5	20. Rgd3	Ne5	39. Kd3	e5
2. ed	Qd5	21. Rd4	Nc6	40. Nb4+	Nb4
3. Nc3	Qa5	22. Rd6	Red8	41. Bb4	f5
4. d4	Nf6	23. Rd8+	Rd8	42. Bd6	Kd6
5. Nf3	Bg4	24. Rd8+	Nd8	43. c4	bc
6. Be2	e6	25. Qd2	Nc6	44. Kc4	Kc6
7. 0-0	c6	26. h3	Qd4	45. b4	Kd6
8. Ne5	Be2	27. Qe2	Qe5	46. a4	Kc6
9. Qe2	Bd6	28. Qd2	Qd4	47. h4	h6
10. Nc4	Qc7	29. Qe2	Qe5	48. b5+	ab+
11. Nd6+	Qd6	30. Qe5	Ne5	49. ab+	Kb6
12. Rfd1	0-0	31. Kf1	Nc4	50. Kd5	e4
13. Bg5	Nbd7	32. Bc1	Kf8	51. fe	fc
14. a3	Rfe8	33. Ke2	Ke8	52. Ke4	Kb5
15. Rd3	Rac8	34. b3	Nd6	53. Ke5	Kc5
16. Rad1	a6	35. f3	Kd7	54. Kf6	g5
17. Rg3	c5	36. Be3	Kc6	55. hg	hg
18. Bh6	g6	37. Na2	Nd5	56. Kg5	Kd5
19. dc	Qc5	38. Bd2	b5	57. Kf6	Resigns

---

## USCF membership benefits

All members of the CICL are encouraged to join the U.S. Chess Federation. CICL members may join or renew membership at a 20 percent discount because the CICL is a USCF affiliate. Membership in the USCF includes a subscription to Chess Life and Review, one of the world's best chess magazines, and allows members to play in USCF rated tournaments, from the U.S. Open to the smallest local tournament. Members acquire a nationally recognized rating and can buy chess books and equipment at discount prices.

Perhaps the greatest benefit of USCF membership is the opportunity to improve one's play. By participating in USCF rated tournaments, a player can test his ability and ideas against a wide range of openings, abilities and styles.

One year's membership for CICL members is only \$12. Send your check, made out to the U.S. Chess Federation, to Charles Ward, Bldg. 362, Argonne National Laboratory, Argonne, Illinois 60439. Your check will be forwarded to the USCF with certification that you are entitled to the 20 percent discount. The usual fee for USCF membership is \$15.

If you are renewing your membership, please also include your membership number and expiration date. These can be found on your CL&R mailing label. If you are a previous USCF member, please mention the approximate expiration date of your earlier membership.

# Tournaments

OCT 1 MUSTANG ROUNDUP #3  
3-SS, 30/1. Cafeteria, Rolling Meadows HS, 2901 Central Rd., Rolling Meadows 60008. Open to 1799 USCF and below and unr.  
EF: \$3; USCF+EF: \$15, if recd by 9/30; \$1 more at site. \$\$: (based on 40 entries) 25-15-10, D/E 20-15-10-5, unr 15-10. Reg: 8-9AM, rds: 9:30-1-4:30. Ent: Hugh Persson, address above.  
NS.

OCT 2 3-ROUND QUAD  
Lincoln Park CC, 2526 Lincoln Ave., Chicago 60614. Open to all. EF: \$15 if recd by 10/1; \$3 more at site; \$5 reduction to LPCC members. \$\$: 1½ hr lesson with Life Master Andrew Karklins; 2nd place, \$10 book. Reg: 9:30-10:45; rds: 11-2:30-6. 40/100.

OCT 15-16 C & BELOW OPEN  
5-SS, 40/100. Open to 1599 USCF and below. Unr play for unr prize. EF: \$19 if recd by 10/14, \$4 more at site, \$5 reduction for LPCC members. Lincoln Park CC, 2526 Lincoln Ave, Chicago 60614. \$\$: 150-75/D 75-50/E 50/unr 50. Half-point bye in rd 1 or 2 if requested in adv. Rds: Sat 11-3-7, Sun 11-3.

OCT 19, 26, WEEKNIGHT SWISS  
NOV 2, 9, 16.  
5-SS, 40/2. Lincoln Park CC, 2526 Lincoln Ave., Chicago 60614. Open to all. EF: \$16 if recd by 10/18, \$2 more at site, \$5 reduction to LPCC members. \$\$: 75-50/B 30/C30/D&below 30. Rds: 7:30.

OCT 30 BLUE ISLAND TORNADO  
4-SS, 45/90. 12804 Highland, Blue Island. EF: \$3. \$\$: 50 to

1st, more per entries. Reg: 8-8:45AM. Rds: 9-12:30-4-7:30.  
ENT: Ralph Larson, 137 W. 104th Pl., Chicago 60628.

## HOW TO READ TOURNAMENT LISTS

CC: Chess Club.

EF: Entry fee.

ENT: Where to send entries. Include full name, address, USCF rating (state if unrated and estimate strength), USCF identification number and expiration date, name and date of tournament, entry fee and USCF dues if joining or renewing.

HR: Hotel rates. First figure is single rate, second is double-occupancy, etc.

LS: Limited smoking.

NS: No smoking.

Quad: Quadrangular. Players of similar strength are grouped in four-player (or larger) round-robin sections and play only within their section.

Rds: Schedule of games.

Reg: The hours during which players may register at the playing site.

RR: Round robin. Each player meets every other player.

SS: Swiss system. A pairing system in which, generally, players with similar scores are paired.

TL: Time limit.

Unr: Unrated.

USCF+EF: Some organizers give a reduced rate, combining USCF dues and the entry fee.

\$\$: Prizes guaranteed by the sponsor unconditionally. Sometimes prizes are based on the number of entries. Payment of the prize fund is the responsibility of the sponsor only, and not of the USCF.