

CHICAGO INDUSTRIAL CHESS LEAGUE BULLETIN

VOLUME 24, NUMBER 3, DECEMBER 1980



PHOTO BY PAUL WESTON

**USCF AFFILIATE
FOUNDED 1957**



CONTENTS

PAGE

GRAFFITI.....3
 JUST CHANGE LEVELS, THE COMPUTER WON'T MIND.4
 WORLD VIEW.....5
 1980 CICL BANQUET.....6
 GAMES.....13
 NORTH DIVISION REPORT.....17
 FAR WEST DIVISION REPORT.....18
 EAST DIVISION REPORT.....18
 CICL TEAM STANDINGS.....19
 DIVISION TOP TEN.....20
 MOST IMPROVED PLAYERS.....21
 RATINGS ANNOUNCEMENT.....21
 MATCH RESULTS.....22
 RATINGS.....26
 ILLINOIS CHESS BULLETIN ANNOUNCEMENT.....30



EDITOR.....Don Graft
 COLUMNIST.....Helen Warren
 GAMES EDITOR.....Dave Baurac
 GRAPHICS.....Larry Kwiatek
 STATISTICS.....Paul Weston
 Joe Brozovich



ON THE COVER.....Contestants in the 1980 CICL speed chess tournament (held during the annual banquet) consider their moves. For a complete photoreport, turn to page 6.

GRAFFITI

The mad Ayatollah Khomeini has declared that chess is forbidden in Iran because it violates the teachings of Islam. It seems to me that Khomeini is less interested in the theological implications of chess than he is in suppressing any activity that fosters independence of thought, originality, and dissent. The banning of chess in Iran is particularly distressing because Persia (now Iran) played a major role in the early development and dissemination of chess.

A reader has written to complain that the games section should be presented in column format, rather than paragraph format. I think this is really an unfounded complaint because many periodicals use the paragraph format, including the well-known Informant series. No matter what format is used, the reader has the problem of keeping his place while studying the board. Some sort of pointer is called for: a finger, a pen point, etc. In short, the reader's complaint derives from the pointer problem, and not from the choice of paragraph format. We shall continue with the paragraph format.

The minutes of the August 21, 1980 CICL Meeting declare "...a technique to select a unique (MVP) winner for each division ...would be published no later than the second Bulletin of the coming season." The failure of the method to appear in the second Bulletin points up the difficulty of implementing an equitable tie-break for most-valuable player awards. To get an idea of the difficulties, consider the simple system where each player is measured by his percent contribution to his total team season game score. This seems reasonable but allows unfortunate loopholes; for example, a player who plays once and wins the only point scored by the team during the season automatically wins the MVP title (unless, of course, some other person has identical circumstances). Now, ad hoc rules can be added to plug the loopholes. We could say that an MVP winner must have played at least five games during the season. The resulting system, with a few additional patches, could function as an equitable MVP award system. Another possible system would be to hold a one-day Swiss playoff. This would have the advantage of creating a new "event" for the CICL.

The staff of the CICL BULLETIN wish you a happy holiday season and a joyous new year. We have tried to keep the Christmas hype to a minimum here, mostly because we don't want to steal the thunder from Alfred Russel Wallace's birthday next month. Wallace is, of course, the originator of the theory of evolution via natural selection (often erroneously attributed to Charles Darwin). Accordingly, we will celebrate Wallacemas on January 8, and the Wallacemas hype will appear in the January issue of the CICL BULLETIN.



JUST CHANGE LEVELS,
THE COMPUTER WON'T MIND

By David Nottke

At one time, the Wescom Chess Club had two challenge ladders, but a decline in membership and a desire to make it easier for the lower-rated players to challenge the higher ones prompted a change to one ladder. Activity on this ladder has almost ceased, however. This may be due to several factors, one of which could be the feeling that if you cannot win, why play? This attitude seems to be summed up in this extract from the ad copy for a chess-playing machine: "And you can change levels right in the middle of the game if the robot starts to beat you."

Webster's says that to compete, one must strive for an objective. That leaves it to us to decide what the objective is. Winning certainly is an objective, but is it necessarily the best or most realistic one?

Recently, I played board 5 for Wescom in a CICL match against Argonne. The game lasted slightly more than four hours and it took my opponent about fifty moves to convince me to resign. At first, I was unhappy about losing, not only for myself, but also for Wescom--no matter what I tried, my opponent refused to change levels in the middle of the game.

After the game, I learned that my opponent held approximately 350 rating points more than I. Thinking of this and mentally reviewing the game, I began to shift my objective from the omnipotent win to a more realistic goal of playing my best (are the two incompatible?--Ed.). Neither of us made any serious blunders. The turning point of the game came when I initiated a formidable king-side attack, which included a Trojan knight sacrifice. My opponent, after 15 minutes of study, accepted the sacrifice and went on to prevent me from equalizing.

The important thing is that I had formulated a strategy and may have successfully executed it if I had played an opponent of equal rating. Put simply, I was outplayed in a good game.

Should I hang my head in shame at having lost, or should I be pleased at having made my opponent sweat for his victory? The black-and-white of it dictates the former; a more realistic appraisal insists on the latter.

According to the statistics, Wescom has not fared too well so far in current CIGL play. I, however, have gained experience in tournament play, increased my playing ability, and had a good time. Tuesday's game was lost, but I won.

What is your objective?

world



View

by JOHN TOMAS

ARGENTINA: Tony Miles and L Ljubojevic tied for first in the Buenos Aires Quadrangular with 4-2. Penno, with 3½-3½, and Quinteros with 1-5, trailed the field. Bent Larsen led after 7 rds. in the Clarin Cup. His score of 6½ was far ahead of, among others, Karpov, who trailed with 4-3.

AUSTRIA: After the half-way point in this year's Tungstram tournament in Baden-Baden Boris Spassky led with 5½-2½ ahead of Belyavsky and Nunn with 5-3, Smejkal at 4½, Vaganian, Byrne, and Vander Wiel with 4. Among those lower in the lists are Miles, Stean, and Seirawan.

HOLLAND: Anatoly Karpov added to his reputation as the most successful world champion by winning yet another super tournament (average rating: 2618). His score of 7½-5½ was ahead of Portisch with 7, Timman 6½, Spassky and Sosonko at 6, Tal with 5½, Hort and Larsen with 5, Andersson, Hubner and Ribli at 4½ and Kavalek with 4. Larsen became only the second GM in the last ten years to win a second game against Karpov, this time on the black side of a Petroff. Hubner's showing in this event is a very bad omen for his upcoming match with Korchnoi. Highlight of this stellar event was the appearance of Dutch GM Jan Donner. He acted as the analyst for the press, T-V, and general audience after each game. The following games from this event are given per courtesy of the AIPE.

MEXICO: Csom of Hungary won the Mexico City Invitational ahead of Vaganian, with Lombardy in 3rd and Romanishen. Csom went 10-2 and was undefeated.

USSR: Maya Chiburdanize qualified for the First League USSR Championship by finishing second in the Leningrad Semifinal ahead of, among others, Taimanov (whom she beat) Bronstein, and Gipslis. This is arguably the best performance ever by a woman chess player. Her incisive style is represented by her win over Dvoris.

CHIBURDANIZE-DVORIS Sicilian

1 e4 c5 2 Nf3 d6 3 d4 c4 4 Nd4 Nf6 5 Nc3 a6 6 Bg5 e6 7 f4 Nbd7 8 Qf3 Qc7 9 O-O-O b5 10 Bd3 Bb7 11 Rhel Qb6 12 Nd5! ed 13 Nc5!! (see diagram) Bc6 14 ed5+ Be7 15 dc Nc5 16 Bf6 gf 17 Bf5 Qc7 18 b4 Ne6 19 Qh5 Qg7 20 Bd7+ Kf8 21 Qh6 d5 22 Re7! Ke7 23 Re1+ Kf8 24 Qf6 Kg8 25 Re7 Kf8 26 Be6 Qe7 27 Qe7 fe 28 c7 h5 29 Qf8+ 1-0

YUGOSLAVIA: Tony Miles won his tenth straight tournament at Vrbas with 7-4, ½ pt ahead of Sax and Ivanovic. These results make Miles a real candidate for the Chess Oscar this year. Only Karpov has a comparable record and it should be remembered that Miles won the first board prize ahead of Karpov and beat him in their individual game at Skara in January.

(Reprinted with permission from Illinois Chess Bulletin, December 1980. John Tomas is the Associate Editor of the Illinois Chess Bulletin and a USCF Voting Member.)

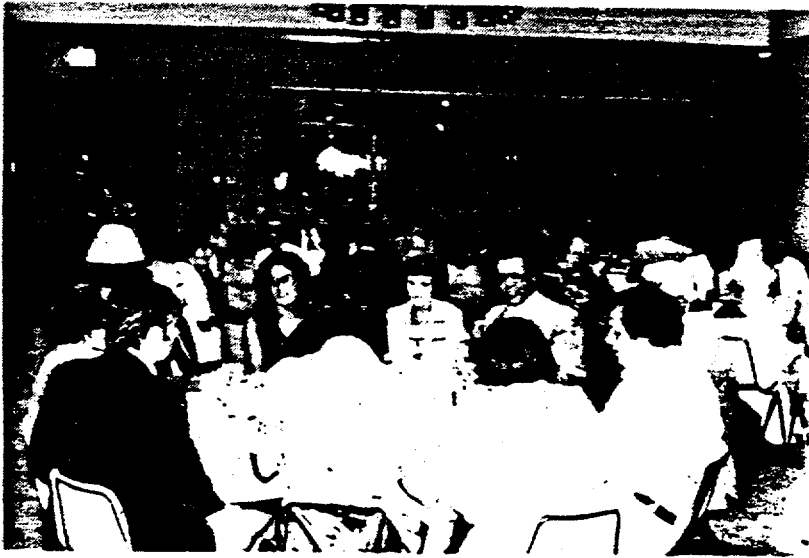


Photos By Paul Weston

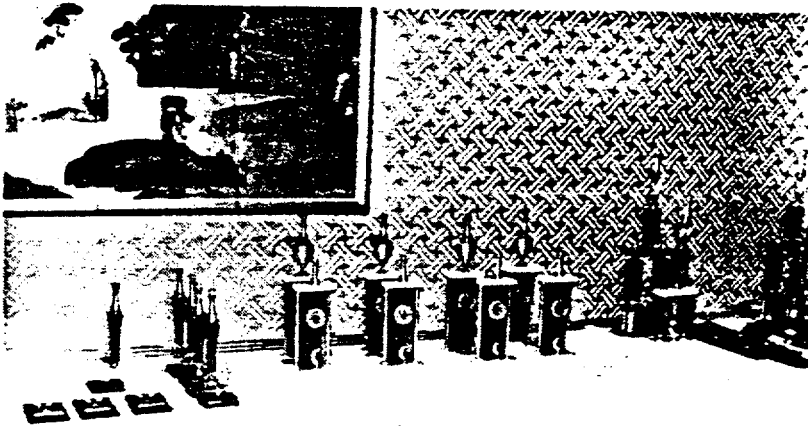
Of course, the most important item on the agenda is food.



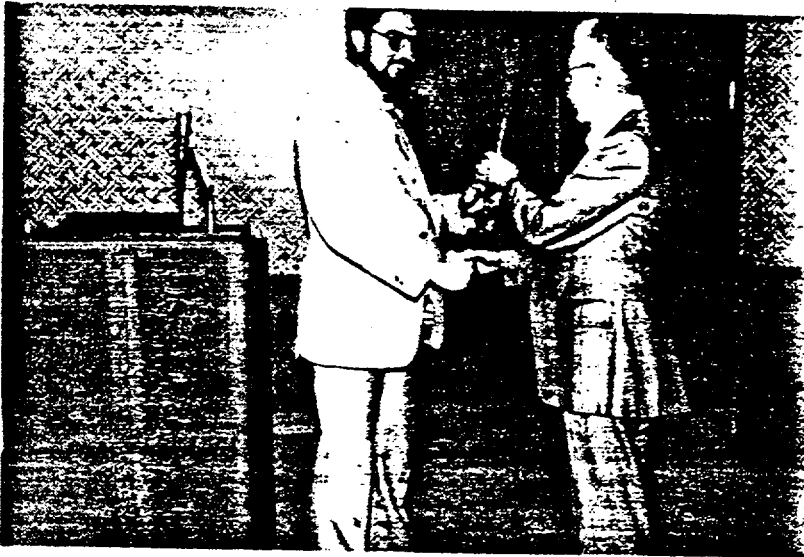


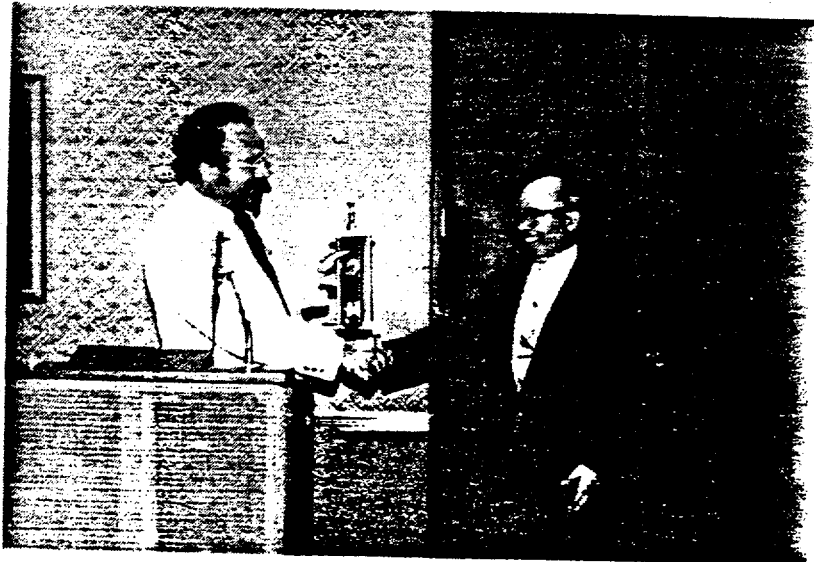


Every dinner must be followed by an after-dinner speaker.



The awards to be given to worthy recipients.





Where have we seen this
little chap before?



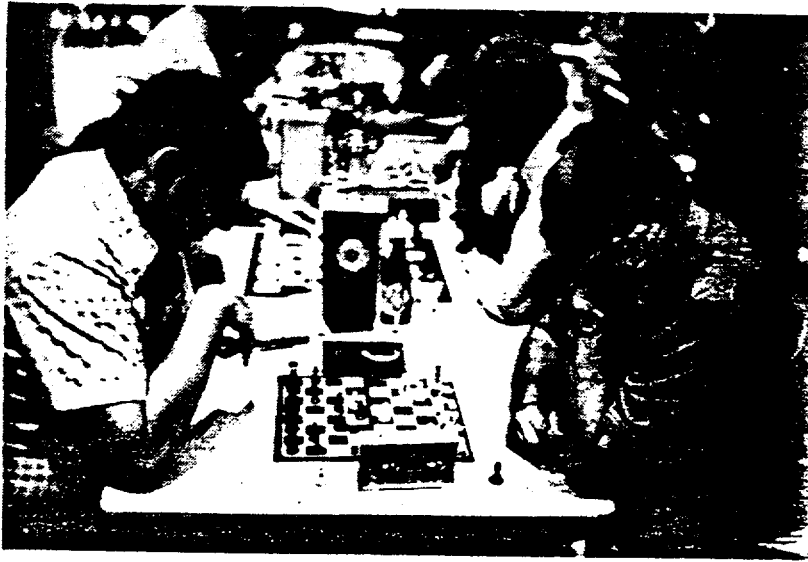
Congratulations.



The Speed Chess Tournament begins.....



Yes, women do play chess!



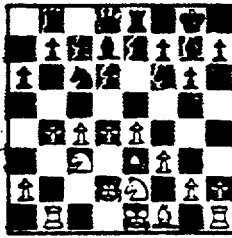
Well, not everyone loves
Speed Chess.



Paul has kindly offered to give the originals away to any individuals who want them. Simply write to me with your request (limit three per individual) stating the page number and photo number counting from the top of the page and left to right. First come, first served.....or, the early bird gets the worm.

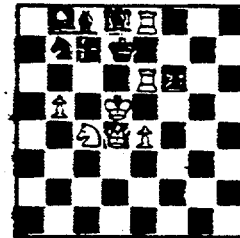
Don Graft





GAMES

By Dave Baurac

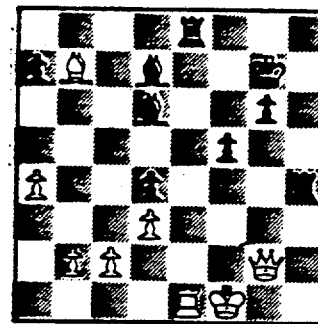


Send games to Dave Baurac, 7517 Country Lane South, Darien, Illinois 60559. If you give notes, you are entitled to a diagram, so be sure to indicate where you want it.

My first-ever win over a USCF-rated expert (2070). Both sides could have played better, but a point is a point. The notes were put together with help from Dwight Kucera and Jim Jackson.

King's Indian Attack: B. Parham-D. Baurac, National Open, Chicago, 1980

1. e4 c5 2. Nf3 e6 3. d3 Nc6 4. g3 g6 5. Bg2 Bg7 6. Nbd2 Nge7 7. Qe2 d5
8. a4 O-O 9. h4 (I felt this was a premature wing attack and decided to
mix it up in the center.) Nd4 10. Nd4 cd 11. h5 e5 12. f4 f5 13. hg hg
14. fe Be5 15. ed Bg3+ 16. Kf1 Nd5 17. Kg1 Ne3 18. Nf1 Nf1 19. Kf1 Re8?
(19. ... f4! The R should stay where it is. 19. ... Qf6?? loses the
Q: 20. Bd5+ Kg7 21. Bh6+ K moves 22.
Bg5+.) 20. Bd5+ Kg7 21. Bh6+ Kf6
22. Qf3 Qc7 23. Rg1 Rh8 24. Bd2 Bd6 25.
Qg2 Qh7 (The only move.) 26. Bg5+ Kg7
27. Bh4 Bd7 28. Rh1? (28. Qg5 wins.
For example, 28. ... Rhf8 29. Re1 Rae8
30. Re8 Be8 31. Qd8 Bb4 32. Qc7+ Bf7
33. Qe5+ Kg8 34. Rh1 Bd5 35. Qd5+ Qf7
36. Qd4, and Black cannot parry both
the threat of 37. Qb4 and the threat of
37. Be7. If 35. ... Rf7 36. Bf6 Qh1+
37. Qh1 Rf6 38. Qb7, and White wins.)
Qh4 (The only move.) 29. Rh4 Rh4 30.
Bb7 (To clear d5 for the Q.) Re8! 31.
Re1? (The losing move -- see diagram.)
The only way to save the game is 31.
Qd5, after which Black must take the perpetual check with 31. ... Rf4+.)
Rf4+ 32. Bf3 Bc6 33. Re8 Rf3+ 34. Qf3 Bf3 35. Rd8 Bf5? (35. ... Bc5!)
36. Kf2 Bd1! 37. Rd4 g5 38. Rc4 (38. Rf4 also loses. For example,
38. ... gf 39. c3 Kf6 40. a5 Bc2! 41. Kf3 Bd3 42. Kf4 and the bishop
holds the white pawns, forces White into zugzwang, and Black queens his
f-pawn. Black cannot afford to give up the f-pawn for the white pawns
because the queening square for his a-pawn is the wrong color. If 41.
Ke2 f3+. If 41. d4 Bb3.) Bb8 (Clearing the way for the pawns to
advance.) 39. Rc8? (This only forces the bishop to a better post, but
White is lost anyway. It is already too late to advance his pawns.
For example, 39. b4 g4 40. b5 f4 41. a5 g3+ 42. Kg2 f3+, etc.) Be5 40.
b4 g4 41. Rc4 g3+ 42. Ke1 g2 43. Kf2 Bf3 44. Kg1 (To stop 44. ... Bh2:)



Position after 31. Re1.

Kg6 45. b5 (If the R moves off the fourth rank, 46. ... Bd4+ wins.) Kg5
 46. d4 Bf4 47. Rc3 (To stop 47. ... Be3+) Kg4 48. a5 Bd2 49. Ra3 (49.
 Rd3 puts up more of a fight.) Kf4 (49. ... f4 is better, but 49. ...
 Kg3! is best.) 50. c4 Be3+ 51. Re3 Ke3 52. d5 (White queens first, but
 too late.) f4 53. b6 ab 54. ab Be4 55. b7 f3 56. b8/Q f2+ 57. Kh2 g1/Q+
 58. Kh3 Bf5+. 0-1.

The following game was played at the Lake County Open in October.
 Nik's opponent was the tournament winner. His draw against Nik was the
 only blemish on an otherwise perfect score.

King's Gambit: N. Goncharoff-L. Ahrens, Lake County Open, 1980.

1. P-K4 P-Q3 2. P-KB4 P-K4 (Would you believe, by transposition, the
 King's Gambit declined?) 3. P-Q3 (Encyclopedia of Chess Openings
 recommends 3. N-QB3! The main line continues ... N-KB3 4. N-B3 N-B3 5.
 B-N5 B-Q2 6. P-Q3 PXP 7. BXP B-K2 8. O-O O-O 9. P-Q4 B-K1 10. Q-Q2 N-Q2
 11. QR-K1 B-B3 with advantage to White.) N-QB3 4. P-B5 P-KN3 5. PXP
 RPXP 6. N-QB3 B-K2 7. P-KN3 N-KB3 8. B-K2 N-KR4 9. BxN RxB 10. B-K3
 B-N4 11. Q-Q2 BxB 12. QxB B-N5 13. K-Q2 Q-Q2 14. N-Q5 Q-Q1 15. QR-KB1
 P-B4 16. P-B3 N-N1 17. PXP P-B3 18. N-B4 RxBP 19. N-K6 Q-K2 20. RxR BxR
 21. N-N5 N-Q2 22. P-KR3 N-B4 23. P-Q4 PXP 24. QxQ+ KxQ 25. PXP N-K5+
 26. NxN BxN 27. R-R2 R-KB1 28. R-K2 P-Q4 29. P-KR4 K-Q3 30. P-QN4 R-B8
 31. R-K1 R-B4 32. K-K3 P-N3 33. P-QR3 P-KN4 34. PXP RXP 35. N-K2.
 1/2-1/2.

Gruenfeld Defense: A. R. Monzani, Felpro-N. Anderson, Sara Lee, 1980.
 Notes by Monzani unless otherwise indicated.

1. P-Q4 N-KB3 2. P-QB4 P-KN3 3. N-QB3 P-Q4 4. N-B3 P-QB3 (4. ... B-N2!
 -- D.B.) 5. PXP PXP 6. P-K3 B-N2 7. B-Q3 O-O 8. O-O N-B3 9. P-QR3 B-Q2
 (9. ... B-N5! -- D.B.) 10. P-QN4 P-QR3 11. B-N2 R-B1 12. R-B1 P-QN4 13.
 P-KR3 Q-N3 14. Q-K2 KR-Q1 15. R-B2 Q-N2 16. KR-B1 N-K1?? 17. NXP (Take
 what is offered, run when attacked.) B-K3 18. N-KB4 B-K4 19. NxB RxN
 20. B-K4 R-K3 21. N-K5 BxN 22. PxB R-K3 23. Q-B3 (23. B-Q5 works too --
 D.B.) NXP 24. BxQ NxQch 25. BxN RxR 26. RxR N-Q3?? 27. B-Q5. 1-0.

World champion Anatoly Karpov, as usual, won the all-Grandmaster
 round-robin tournament at Tilburg, Holland. He finished with 7 1/2
 points, 1/2 point ahead of Lajos Portish. Perhaps the most brilliant
 game of the tournament occurred when former world champion Mikhail Tal
 flashed some of his old attacking form to defeat former world champion
 Boris Spassky.

Ruy Lopez: M. Tal-B. Spassky, Tilburg, 1980.

1. P-K4 P-K4 2. N-KB3 N-QB3 3. B-N5 P-QR3 4. B-R4 N-B3 5. O-O B-K2
6. R-K1 P-QN4 7. B-N3 P-Q3 8. P-B3 O-O 9. P-KR3 N-N1 (The Breyer
variation.) 10. P-Q4 QN-Q2 11. QN-Q2 B-N2 12. B-B2 R-K1 13. N-B1 B-KB1
14. N-N3 P-N3 15. P-QR4 P-B4 16. P-Q5 P-B5 17. B-N5 P-R3 18. B-K3 R-N1
19. Q-Q2 P-KR4 20. N-N5 N-R2 21. NxN KxN 22. R-KB1 K-N1 23. K-R1 B-N2
24. PxP PxP 25. P-B4 PxP 26. BxP Q-K2 27. B-N5 Q-K4 28. R-B3 R-R1 29.
QR-KB1 R-KB1 30. NxP PxN 31. R-B5 Q-K1 32. P-K5 PxP 33. B-R6 R-R3 34.
BxB KxB 35. P-Q6 P-B3 36. R-N5ch K-B2 37. B-N6ch K-K3 38. B-B5ch K-B2
39. Q-Q1 R-KR1 40. B-N6ch K-K3 41. BxQ RxB 42. QxP R-Q1 43. R-N7 KxP
44. Q-B7. 1-0.

Queen's Gambit Declined: Portisch-Tal, Tilburg, 1980.

1. P-QB4 N-KB3 2. N-QB3 P-K3 3. N-B3 P-Q4 4. P-Q4 B-Q2 5. B-N5 P-KR3 6.
B-R4 O-O 7. P-K3 P-QN3 8. R-B1 B-N2 9. B-K2 QN-Q2 10. PxP PxP 11. O-O
P-B4 12. B-QN5 R-B1 13. PxP PxP 14. R-K1 N-N3 15. Q-K2 N-K5 16. NxN
PxN 17. BxB QxB 18. N-Q2 KR-Q1 19. R-B2 R-Q4 20. N-B4 Q-N4 21. N-R5
B-R1 22. KR-QB1 QR-Q1 23. N-N3 R-QB1 24. P-KR3 Q-K2 25. R-B3 R-N4 26.
Q-B2 Q-K3 27. P-KR4 R-K4 28. NxP QxP 29. B-K2 K-R2 30. N-N3 B-Q4 31.
N-B5 B-R1 32. P-R5 N-Q4 33. NxP NXR 34. N-B6ch. 1-0.

The United States Chess Federation reports that Belle is the new world computer chess champion. Belle (USCF rating 2150) tied with Chaos (1800), both programs scoring 3 1/2 points out of four. Belle won the championship by defeating Chaos in a playoff game. In third place was Duchess (1900) with three points.

Eighteen programs competed in a four-round Swiss tournament sponsored by the International Computer Chess Association to determine the champion. This was the third annual event. Previous winners were Kaissa (UNR) and Chess 4.6.

This year, Kaissa, a Soviet program, finished seventh in the 18-program field. Chess 4.9 (2050), an updated version of Chess 4.6, finished fifth. Just behind, in sixth place was Nuchess, an allegedly improved version of Chess 4.9.

Alekhine's Defense: Belle-Chaos, World Computer Championship Playoff, 1980.

1. e4 Nf6 2. e5 Nd5 3. d4 d6 4. Nf3 de 5. Ne5 g6 6. g3 Bf5 7. c4 Nb4
8. Qa4+ Nbc6 9. d5 Bc2 10. Qb5 Qd6 11. Nc6 Nc6 12. Nc3 Bg7 13. Qb7 O-O
14. Qc6 Qb4 15. Kd2 Be4 16. Rg1 Rfb8 17. Bh3 Bh6+ 18. f4 Qa5 19. Re1 f5
20. Qe6+ Kf8 21. b3 Bg7 22. Bb2 Bd4 23. g4 Rb6 24. Qd7 Rd6 25. Qa4 Qb6
26. Ba3 Bc3+ 27. Kc3 Rdd8 28. Rad1 Qf2 29. gf Qc2+ 30. Kd4 gf 31. Qc6
Qf2+ 32. Ke5 Kg8 33. Rg1+ Kh8 34. Be7 Qg2 35. Qf6+ Kg8 36. Bg2 Rd5+ 37.
Ke6 h6 38. Qh6 Re5+ 39. fe Rf8 40. Bf3+. 1-0.

A microcomputer, Sargon 2.5, has beaten a grandmaster -- checkmated him, no less. The extenuating circumstances were these: last May, GM Larry Christiansen played a 28-game simul in Schenectady, N.Y. He won 28, drew three and lost four. One of the four was to Sargon.

English Opening: L. Christiansen-Sargon 2.5, Schenectady, 1980.

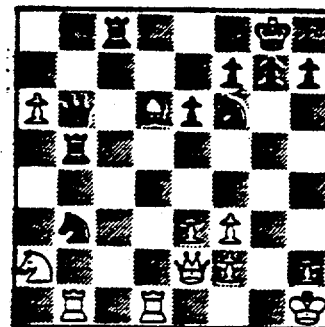
1. P-QB4 P-K4 2. N-QB3 N-KB3 3. N-B3 N-B3 4. P-KN3 B-N5 5. B-N2 O-O 6. O-O P-Q4 7. PXP NXP 8. NXP NXP 9. NPxN NXP 10. PxB Q-Q5 11. R-N1 R-Q1 12. B-N2 Q-Q3 13. P-Q3 P-QB3 14. Q-B2 B-N5 15. P-KR3 B-K3 16. Q-B3 P-B3 17. P-B4 N-N3 18. K-R2 BxQRP 19. R-QR1 B-Q4 20. P-K4 B-B2 21. P-Q4 Q-Q2 22. P-B5 N-K2 23. P-N4 P-QR3 24. K-R1 P-QN4 25. P-N5 B-B5 26. PXP BxR 27. RxB PXP 28. P-Q5 R-KB1 29. B-B3 PXP 30. R-N1ch N-N3 31. PxN?? QxP mate. 0-1.

Sicilian Defense: O. Romanishin-Z. Ribli, Mexico City, 1980.

1. P-K4 P-QB4 2. N-KB3 P-Q3 3. B-N5ch B-Q2 4. P-B4 P-K3 5. O-O N-KB3 6. N-B3 B-K2 7. P-Q4 PXP 8. NXP O-O 9. B-K3 N-B3 10. Q-K2 NXP 11. BxN P-QR3 12. BxB NxB 13. KR-Q1 Q-B2 14. P-QN3 QR-B1 15. R-Q3 KR-Q1 16. QR-Q1 Q-R4 17. Q-Q2 B-B1 18. R-N3 P-KN3 19. R-R3 P-QN4 20. Q-B4 P-K4 21. Q-R4 P-R4 22. B-R7 R-K1 23. N-Q5 QxP 24. P-B5 PXP 25. R-N3 R-K3 26. QxP N-B3 27. Q-B5 R1-B3 28. Q-B3 Q-B7 29. P-R4 NXP 30. RxN R-B3 31. Q-K3 R-B5 32. R-Q8 RxRP 33. R-R3 Q-NBch 34. K-R2 QxKP 35. BxP RxRch 36. PXR QxQ 37. BxQ K-N2. 0-1.

Nimzoindian Defense: Portisch-Balashov, Rio de Janeiro, 1979.

1. d4 Nf6 2. c4 e6 3. Nc3 Bb4 4. e3 O-O 5. Bd3 c5 6. Nf3 d5 7. O-O dc 8. Bc4 Nbd7 9. Qe2 a6 10. a4 Qc7 11. Na2! b5 (11. ... Ba5? 12. dc Qc5 13. b4 Bb4 14. Nb4 Qb4 15. Ba3 and White wins.) 12. Bd3 Ba5 13. ab ab 14. Bb5 (Advantage to White.) Bb7 15. Rd1 Rab8 16. dc Bf3 17. gf Nc5 18. b4 Nb3 19. Rb1 Qe5 (19. ... Nc1? 20. Rc1 and White wins.) 20. ba! Rb5 (20. ... Qb5 21. Qb5 Rb5 22. Nc3 Rbb8 23. a6 and White stands better.) 21. Kh1 Qb8 22. Ba3 Rc8 23. Bd6 Qb7 24. a6! Qb6 (See diagram.) 25. Bc7! Qc6 26. a7! (White has a won game.) h6 27. Bb8 Nd7 28. Rd6 Qb7 29. Rd7 Qd7 30. a8/Q Rbb8 31. Qe4. 1-0.



Position after 24. ... Qb6.

Sicilian Defense: G. Mahio-M, Quinteros, San Miguel, 1980.

1. P-K4 P-QB4 2. N-KB3 P-Q3 3. P-Q4 PXP 4. NXP N-KB3 5. N-QB3 P-QR3 6. B-N5 P-K3 7. P-B4 Q-N3 (Black wants to play the infamous poisoned-pawn variation of the Najdorf Sicilian -- Black wins the QNP, but his Q may get locked out of play, giving White a lead in development and time

to work up a K-side attack.) 8. Q-Q2 (White accepts the challenge. He can decline by 8. N-N3 or the cute 8. P-KR3, after which 8. ... QxP? loses the Q to 9. N-R4.) QxP!? 9. R-KN1 Q-R6 10. P-K5 (During the last decade, 10. P-B5 has been customary.) PxP 11. PxP KN-Q2 12. B-K2 B-N5 13. R-N3 Q-R4 14. O-O O-O 15. B-B6 NxB 16. PxN R-Q1 17. PxP (A dubious move, according to GM Robert Byrne of the New York Times, who notes that Black can stop White's attack with 17. ... B-B4! 18. Q-R6 BxNch 19. K-R1 BxP.) RxN? (After this move, White launches what Byrne calls "one of the most wonderful attacks of the year.") 18. Q-R6! Q-K4 19. N-K4! QxN (19. ... RxN 20. R-KR3 QxP 21. R-KN3 QxR 22. PxQ RxB 23. Q-N5ch K-B1 24. Q-Q8ch K-N2 25. Q-B6ch K-N1 26. QxPch K-R1 27. Q-K8ch K-N2 28. R-B7ch K-R3 29. Q-N8 forces mate. -- Byrne.) 20. B-R5! R-Q2 (If 20. ... P-B4 21. B-N6! PxB 22. Q-R8ch K-B2 23. P-N8/Qch wins. -- Byrne.) 21. R-Q3 B-B4ch 22. K-R1 B-Q5 23. R-KN3 N-B3 24. B-N6! QxB 25. RxQ N-K2 (Forced.) 26. RxBP! KxR 27. P-N8/Qch NxQ 28. QxPch. 1-0.

 NORTH DIVISION REPORT 

By Jim Brotsos

Please note that Norm Hughes has replaced Peter Skujins as Team Captain of the Kemper Insurance squad. His phone number is 540-2354. Also, Kemper is asking for approval for Dean Muench, a temporary consulting programmer at Kemper, to play on their team. Norm will be sending a request to the North Division Team Captains explaining the situation. Please let me know if you approve.

Kemper has used up one of its privileges under Section II (Rules), Paragraph C (to start an absent player's clock with the understanding that the player will arrive late). Since Karge's clock was started on board 5 against Gernes of Teletype II and he failed to make the match, Kemper has only one more opportunity to repeat this type of situation.

Two teams in our division have suffered key personnel losses. Signode lost its top 3 players, Stern, Wheeler, and Brosig. Kemper (once a contender for playoffs) has not been playing John Van Meer, a fine player and enthusiastic team member in the past. So far, the remaining players on both teams seem to be making a respectable showing anyway.

At this writing, it is still appropriate to wish you all a happy holiday season and a joyous new year.



FAR WEST DIVISION REPORT



By Joe Brozovich

The Wheaton Crusaders fell from the ranks of the undefeated and now the Argonne Rooks and the BTL Royals are leading the Far West in December. It's beginning to look like the Rooks and the Royals are going to win it all this year unless another team goes on a long winning streak.

Last year's champion Kingsmen got their first victory of the year against the Wheaton Crusaders in a very close match. Amoco now has lost 17 matches in a row, according to team historian Richard Lee. The rest of the division had better look out for Amoco because they're due to jump on somebody sometime.



EAST DIVISION REPORT



By Tom Gaffigan

The East Division has been reduced to five teams this season. Illinois Bell and R. R. Donnelley, two long-time league members, dropped out this season. There is a possibility that they could rejoin next year. Please let me know if you can give me names of any persons to contact at companies in the loop area that may be interested in participating next season.

Although down to five teams, those remaining seem to be healthy. The Alumni team continues to be very strong, recently drawing a match with defending league champion Sears. The Sears team is rolling along with impressive wins over Standard Oil and First National. Although Harza lost some of its strongest players last season, it is still strong enough to shut out First National in a recent match. Standard Oil could be a playoff contender, having won a match against Harza.



CICL TEAM STANDINGS



NEAR WEST DIVISION 15-Dec-80

TEAM NAME	W	L	D	GAME POINTS	MATCH POINTS	PCT
BTL PLAYERS	3	0	1	15.5	3.5	0.875
WE CHARGERS	3	1	0	18.0	3.0	0.750
ANL KNIGHTS	2	1	0	11.5	2.0	0.667
INT'L HARVESTER	1	2	1	10.5	1.5	0.375
WE GAMBITEERS	0	1	2	7.5	1.0	0.333
WESCOM	0	1	2	6.0	1.0	0.333
CPC INTERNATIONAL	0	3	0	3.0	0.0	0.000

NORTH DIVISION 15-Dec-80

TEAM NAME	W	L	D	GAME POINTS	MATCH POINTS	PCT
EXCALIBERS	4	0	0	20.0	4.0	1.000
MOTOROLA	3	0	0	14.0	3.0	1.000
TELETYPE KNIGHTS	2	0	0	8.5	2.0	1.000
FEL-PRO	2	1	0	7.5	2.0	0.667
SIGNODE	1	1	1	10.0	1.5	0.500
KEMPER INSURANCE	1	0	0	4.0	1.0	1.000
PROCON/UOP	0	1	1	5.5	0.5	0.250
TELETYPE #2	0	2	1	7.0	0.5	0.167
ZENITH-GLENVIEW	0	2	1	4.5	0.5	0.167
KITCHENS OF SARA LEE	0	3	0	6.0	0.0	0.000
APEX TOOL WORKS	0	3	0	3.0	0.0	0.000

FAR WEST DIVISION 15-Dec-80

TEAM NAME	W	L	D	GAME POINTS	MATCH POINTS	PCT
ANL ROOKS	3	0	1	16.0	3.5	0.875
BTL ROYALS	3	0	1	15.0	3.5	0.875
WHEATON COLLEGE	3	2	0	16.0	3.0	0.600
ANL PAWNS	2	1	0	12.0	2.0	0.667
FERMILABS	1	3	1	12.5	1.5	0.300
WE KINGSMEN	1	3	1	12.0	1.5	0.300
AMOCO	0	4	0	6.5	0.0	0.000

EAST DIVISION 15-Dec-80

TEAM NAME	W	L	D	GAME POINTS	MATCH POINTS	PCT
SEARS	2	0	1	14.5	2.5	0.833
ALUMNI CENTRAL	1	0	1	8.0	1.5	0.750
HARZA ENGINEERING	1	2	0	9.0	1.0	0.333
STANDARD OIL COMPANY	1	2	0	6.0	1.0	0.333
FIRST NATIONAL BANK	1	2	0	3.5	1.0	0.333



 DIVISION TOP TEN



 EAST DIVISION

REYES, R	SEARS	2312
CZERNIECKI	ALUMN	2122
LATIMER, E	SEARS	1962
NORNE, U	HARZ1	1933*
GIBBS	FBNBK	1921
ANDRESEN, T	SEARS	1883
GOLLA, R	SEARS	1842
FABIJONAS, R	ALUMN	1825C
DUNWORTH, J	ALUMN	1825
FEILER, K	FBNBK	1797

 FAR WEST DIVISION

STREETS, D	PAUNS	2092
JAKSTAS, K	ROYLS	2075
JACKSON, J	ROOKS	1915C
MIHAILOVICH, S	PAUNS	1880C
BERRY, G	ROOKS	1880C
PARKER, L	KNGMN	1866
WILKINSON, D	FERNI	1846*
WALHOUT, H	CRSDR	1800
LEONARD, T	CRSDR	1791*
GAINES, I	FERNI	1740

 NORTH DIVISION

BUERGER, E	EXCAL	2162
WONG, P	EXCAL	2023
TEGEL, F	TTY	2016C
LEONG, G	KENPR	1965
KARLOVICS, S	EXCAL	1878
JACOBS, H	TTY	1860
SULLIVAN, J	EXCAL	1859C
SCHULMAN, R	ZENTH	1836
STYS, A	PRCON	1835
KOZACKY, J	PRCON	1800

 NEAR WEST DIVISION

BENEDEK, R	KNIGHT	2132
WARREN, J	CHRGR	2018C
SPLAVER, H	PLYRS	1941
MARCOUKA, R	CHRGR	1882
YOUNG, C	KNIGHT	1825
PETERSON, H	KNIGHT	1823C
GRAFT, D	UESCH	1733
DOBZ, K	CHRGR	1715C
KUHRO, D	CHRGR	1707C
SAHELSON, C	PLYRS	1679*



MOST IMPROVED PLAYERS



SPLAVER, H	PLYRS	80
HOSKINS, E	SIGND	67
HANSON, D	SARAL	65
SAMELSON, C	PLYRS	63
WILKINSON, D	FERMI	53
THOMAS, G	PLYRS	51
GAINES, I	FERMI	43
ANDERSON, D	ROYLS	42
BERNES, L	TTY2	42
PEEL, A	INHARV	42
AGPAUA, T	ZENTH	42



RATINGS ANNOUNCEMENT



By Paul Weston

In the Near West Division, H. Splaver was entered into our rating system at his USCF rating of 1861, retroactive to the beginning of the season.

I would like to make an appeal to all team captains and Division Chairmen to check the score sheets. Many score sheets come in with player's names spelled incorrectly as far as our official lists are concerned. For example, on the Sears team, Lems, W. sometimes appears as Lems, B. Starting January 1, 1981 I will process the score sheets exactly as they are received. This means if your name is not spelled the same as in our official list, then you will become a new player with no rating. It is thus in the interests of players to ensure that their team captain spells the player's names correctly and consistently. If there are any questions, call me at 983-4090.

MATCH RESULTS

NEAR WEST DIVISION

17-NOV-80		ME GAMBITEERS		3		WESCON		3	
ROUND 4	BD	RATINGS	SCORE	RATINGS	SCORE	RATINGS	SCORE	RATINGS	SCORE
1		STAMM, V	1621-11	0	GRAFT, D	1717	16	1	
2		ALOJADO, M	1568	24	1	POPPS, W	1586	-24	0
3		KUBAL, C	1671	0	1	DAUSON, T	0000	0	0
4		KIMBLER, C	1572	0	1	MEYER, D	0000	0	0
5		THOMAS, J	1414	0	0	SINDEWALD, G	0000	0	1
6		STOCK, R	1223	0	0	STELTON, N	0000	0	1
7		WEISINGER	0000	0	0	BLAUMUELLER, F	0000	0	1

20-NOV-80		BTL PLAYERS		4		ANL KNIGHTS		2	
ROUND 4	BD	RATINGS	SCORE	RATINGS	SCORE	RATINGS	SCORE	RATINGS	SCORE
1		SPLAVER, H	1904	37	1	BENEDEK, R	2169	-37	0
2		SAMELSON, C	1644	35	1	YOUNG, C	1860	-35	0
3		ANDERSON, C	1548	-8	0	PETERSON, M	1818	5	1
4		DEAK, T	1502	-15	0	KELLOGG, K	1614	15	1
5		WARD, C	1609	13	1	BEVER, D	1569	-20	0
6		THOMAS, G	1322	28	1	COOVER, K	1414	-28	0
7		MADISON	0000	0	1	BURBA, K	1408	0	0

NORTH DIVISION

21-OCT-80		PROCON/UOP		3		SIGNODE		3	
ROUND 2	BD	RATINGS	SCORE	RATINGS	SCORE	RATINGS	SCORE	RATINGS	SCORE
1		BHYTRENKO, S	1504	-13	0	BROSIG, A	1664	13	1
2		NICKLICH, F	0000	0	0	STENSAKER, L	1544	0	1
3		DORFMAN, L	0000	0	1	PASTURCZAK, R.J.	1374	0	0
4		VITERI, M	1542	0	1	SECZY, P	0000	0	0
5		STUHLBARG, D	1359	9	1	EVANS, V	1115	-9	0
6		ANSARI, N	1622	-42	0	HOSKINS, E	1171	42	1

22-OCT-80		TELETYPE B2		2		TELETYPE KNIGHTS		4	
ROUND 2	BD	RATINGS	SCORE	RATINGS	SCORE	RATINGS	SCORE	RATINGS	SCORE
1		SUE, H	1458	-2	0	TEGEL, F	2015	1	1
2		KLEMM, J	1520	-6	0	JACOBS, W	1854	6	1
3		GILMER, J	1461	-7	0	BURKEE, D	1742	7	1
4		SHUKLA, P	1324	-5	0	WAGNER, R	1692	5	1
5		GERNES, L	1286	29	1	ZUERCHER, J	1393	-29	0
6		CARPENTER, P	0000	0	1	CARUS, B	1523	0	0
7		BALKA, C	906	0	0	HANZKE, B	0000	0	1

28-OCT-80 EXCALIBERS		4		KITCHENS OF SARA LEE		2	
ROUND 3	BD	RATINGS	SCORE	RATINGS	SCORE	RATINGS	SCORE
1	BUERGER, E	2156	5	1	ANDERSON, H	1776	-5
2	KARLOVICS, S	1870	6	1	SIVULA, B	1554	-6
3	GREEN, H	1422-37	0	0	HANSON, B	1361	37
4	GALVIN, J	1579-36	0	0	SZATHARY, F	1348	36
5	BROTSOS, J	1597	0	1	TATRO, B	0000	0
6	ANPULSKI, J	942	38	1	RATAJCZAK, J	1222-38	0

29-OCT-80 ZENITH-BLENVIEW		3		TELETYPE #2		3	
ROUND 3	BD	RATINGS	SCORE	RATINGS	SCORE	RATINGS	SCORE
1	SCHULMAN, R	1830	6	1	KLENN, J	1514	-6
2	NINKOVIC, S	1505	19	1	GILMER, J	1454-19	0
3	CONWAY, F	1457-23	0	0	SUE, H	1456	23
4	WEIGAND, J	1361-26	0	0	GERNES, L	1315	26
5	SKINNER, S	0000	0	0	CARPENTER, P	0000	0
6	SKULSKI, I	0	1F	1F	BALKA, C	0	0F

29-OCT-80 FEL-PRO		4		APEX TOOL WORKS		2	
ROUND 3	BD	RATINGS	SCORE	RATINGS	SCORE	RATINGS	SCORE
1	FELDMAN, A	1545	0	.5	DELHAFEN, A	0000	0
2	MONZANI, A	1648	0	0	WHITTENHALL; JR	0000	0
3	SHAPIRO, M	0000	0	1	WHITTENHALL; SR	0000	0
4	FERNANDEZ, J	1458	0	1	WHITTENHALL, T	0000	0
5	POKATILOFF, W	1385	0	.5	RACUTT, E	0000	0
6	WEITZ, R	1315	0	1	BIBERARDINO, B	0000	0

30-OCT-80 MOTOROLA		3.5		PROCON/UOP		2.5	
ROUND 3	BD	RATINGS	SCORE	RATINGS	SCORE	RATINGS	SCORE
1	GONCHAROFF, W	1788	1	.5	KOZACKY, J	1801	-1
2	NEUMARK, J	1718	5	.5	STYS, A	1843	-8
3	GREENSPAN, P	1650	0	.5	KICKLICH, F	0000	0
4	OGASAWARA, R	1617	10	1	DNYTRENKO, S	1491-15	0
5	VICK, H	1539-21	0	0	BRIONES, M	1567	21
6	DELEON, J	0000	0	1	VITERI, M	1542	0
7	TOLSON, H	0000	0	.5	STUHLBARG, B	1359	0
8	HOWANSKY, A	0000	0	1	CZARNATA	0000	0
9	BARRETT, B	0000	0	1	BULAY	0000	0
10	JOELSON, A	0000	0	0	CHEVERESAN, S	1331	0
11	FOERSTER, G	0	0F	0F	ABEL, W	0	1F
12	BROADUS, R	0000	0	0	BONOVAN, E	0000	0
13	BIESZKI, B	0000	0	1	SCOTT, R	0000	0
14	LAMBERT, E	0	0F	0F	KROUSHL, J	0	1F
(PRCON)	15 ABEL, W	0000	0	.5	KROUSHL, J	0000	0

11-NOV-80 SIGNODE		2		EXCALIBERS		4	
ROUND 4	BD	RATINGS	SCORE	RATINGS	SCORE	RATINGS	SCORE
1	STENSAKER, L	1544	-1	0	BUERGER, E	2161	1
2	FIGIEL, J	0000	0	0	WONG, P	2023	0
3	MUFF, S	1381	-2	0	KARLOVICS, S	1876	2
4	PASTURCZAK, RJ	1374	35	1	GREEN, H	1585-35	0
5	KLEIN, A	1413-12	0	0	BROTSOS, J	1597	8
6	HOSKINS, E	1213	25	1	EDWARDS, S	1248-25	0
7	GECZY, P	1071	19	1	ANPULSKI, J	980	-19
8	LOPRESTI, P	0000	0	0	EVANS, V	1115	0

EAST DIVISION

30-SEP-80		SEARS		6		FIRST NATIONAL BANK		0	
ROUND 1	BD	RATINGS	SCORE	RATINGS	SCORE	RATINGS	SCORE	RATINGS	SCORE
	1	REYES, R	2294 5	1	GIBBS	1951 -5	0		
	2	LATINER, E	1938 8	1	GAFFIGAN, T	1683 -8	0		
	3	ANDRESEN, T	1883 0	1	SELIN, E	0000 0	0		
	4	CHAN, H	1733 7	1	SMITH, M	1442 -7	0		
	5	LEMS, U	1590 0	1	HOGENDORP, U	0000 0	0		
	6	CIBA, F	0	1F	FORFIET	0	OF		

14-OCT-80		STANDARD OIL COMPANY		.5		SEARS		5.5	
ROUND 2	BD	RATINGS	SCORE	RATINGS	SCORE	RATINGS	SCORE	RATINGS	SCORE
	1	KLEIN, M	0000 0	0	REYES, R	2299 0	1		
	2	AGEE, L	0000 0	0	LATINER, E	1946 0	1		
	3	CHOD, Y	0000 0	.5	GOLLA, R	1872 0	.5		
	4	OSBORNE, U	0000 0	0	ANDRESEN, T	1883 0	1		
	5	MAIL, D	0000 0	0	CHAN, H	1740 0	1		
	6	ROD, R	0000 0	0	LEMS, U	1590 0	1		
	7	SOPYRCH, T	0000 0	0	BALASE, E	1435 0	1		

23-OCT-80		ALUMNI CENTRAL		5		HARZA ENGINEERING		1	
ROUND 1	BD	RATINGS	SCORE	RATINGS	SCORE	RATINGS	SCORE	RATINGS	SCORE
	1	CZERNIECKI	2124 11	1	MURME, U	1919-11	0		
	2	BUNWORTH, J	1828 13	1	KOLENDA	1672-13	0		
	3	FABIJONAS, R	1804 9	1	MUNOZ, R	1669-14	0		
	4	LITVINAS, A	1459-19	0	BUJUID	1513 19	1		
	5	WILSON, A	1548 0	1	VUKSANOVICH, D	0000 0	0		
	6	MATHEWS, J	0	1F	FORFEIT	0	OF		

30-OCT-80		FIRST NATIONAL BANK		0		HARZA ENGINEERING		6	
ROUND 2	BD	RATINGS	SCORE	RATINGS	SCORE	RATINGS	SCORE	RATINGS	SCORE
	1	GIBBS	1946-25	0	MURME, U	1908 25	1		
	2	FEILER, K	1797-14	0	SANDY, A	1927 14	1		
	3	GAFFIGAN, T	1675-24	0	MUNOZ, R	1655 24	1		
	4	SMITH, M	1435-16	0	BUJUID	1532 16	1		
	5	ATKINSON, J	0000 0	0	SINCLAIR, L	0000 0	1		
	6	HOGENDORP, U	0000 0	0	KOLENDA	1659 0	1		

13-NOV-80		HARZA ENGINEERING		2		STANDARD OIL COMPANY		3	
ROUND 3	BD	RATINGS	SCORE	RATINGS	SCORE	RATINGS	SCORE	RATINGS	SCORE
	1	MURME, U	1933 0	.5	KLEIN, M	0000 0	.5		
	2	SANDY	0000 0	0	CHOD, Y	0000 0	1		
	3	MUNOZ, R	1679 0	0	AGEE, L	0000 0	1		
	4	BUJUID	1548 0	.5	WENTLING	0000 0	.5		
	5	VUKSANOVICH, D	0000 0	1	MORGAN	0000 0	0		
	6	FORFIET	0	OF	FORFIET	0	OF		
(STAND)	7	CAMPBELL, C	0000 0	0	SOPYRCH, T	0000 0	1		

10-NOV-80		SEARS		3		ALUMNI CENTRAL		3	
ROUND 4	BD	RATINGS	SCORE	RATINGS	SCORE	RATINGS	SCORE	RATINGS	SCORE
	1	REYES,R	2299 13	1	CZERNIECKI	2135-13	0		
	2	LATIMER,E	1946 16	1	BUNWORTH,J	1841-16	0		
	3	GOLLA,R	1872-30	0	COX,H	1760 30	1		
	4	CHAN,H	1740-18	0	FABIJONAS,R	1813 12	1		
	5	SCHWARTZ,S	1481 16	1	BARGIS,R	1580-16	0		
	6	LENS,U	1590-25	0	WILSON,A	1548 25	1		

04-DEC-80		STANDARD OIL COMPANY		2.5		FIRST NATIONAL BANK		3.5	
ROUND 4	BD	RATINGS	SCORE	RATINGS	SCORE	RATINGS	SCORE	RATINGS	SCORE
	1	KLEIN,H	1906-16	.5	GAFFIGAN,T	1651 16	.5		
	2	AGEE,L	0000 0	1	SELIN,E	0000 0	0		
	3	SOPYRCH,T	0000 0	1	BUCHANAN,R	1556 0	0		
	4	SAPP,S	0000 0	0	SMITH,H	1419 0	1		
	5	SHAFFER,R	0000 0	0	HOGENDORP,W	0000 0	1		
	6	WAGEE,D	0000 0	0	BLENN,S	0000 0	1		

FAR WEST DIVISION

25-NOV-80		ANL PAUNS		4		WE KINGSMEN		2	
ROUND 5	BD	RATINGS	SCORE	RATINGS	SCORE	RATINGS	SCORE	RATINGS	SCORE
	1	STREETS,D	2081 11	1	PARKER,L	1885-11	0		
	2	MIHAILOVICH,S	1871 9	1	BROZOVICH,J	1716-13	0		
	3	GREEN,D	1648 -3	.5	BLAZIE,J	1604 3	.5		
	4	BINGLE,J	1570 -2	.5	SMITH,BR	1554 2	.5		
	5	WALSH,U	0	1F	MCHANEL,K	0	0F		
	6	DALEY,J	1375-11	0	SOBUN,J	1561 11	1		

04-DEC-80		FERMILABS		4.5		ANOCO		1.5	
ROUND 5	BD	RATINGS	SCORE	RATINGS	SCORE	RATINGS	SCORE	RATINGS	SCORE
	1	WILKINSON,D	1820 12	1	MUIR,L	1639-12	0		
	2	GAINES,I	1716 11	1	BEE,H	1529-11	0		
	3	HILL,C	1716 -4	.5	LEE,RJ	1660 4	.5		
	4	HIGNERON,R	0000 0	0	SPANGLER,H	1505 0	1		
	5	FISCHLER,H	1452 0	1	MIMRY,T	0000 0	0		
	6	WALKER,R	1382 0	1	PETTY,B	0000 0	0		
	7	LASSILA,K	0000 0	.5	CATTRON,U	0000 0	.5		

05-DEC-80		WE KINGSMEN		3.5		WHEATON COLLEGE		2.5	
ROUND 4	BD	RATINGS	SCORE	RATINGS	SCORE	RATINGS	SCORE	RATINGS	SCORE
	1	PARKER,L	1874 -8	.5	LEONARD,T	1750 8	.5		
	2	BROZOVICH,J	1703-16	0	WALHOUT,H	1803 16	1		
	3	SMITH,BR	1556 21	1	HAN,A	1527-21	0		
	4	ROSEN,J	1548 16	1	LUBENEC,S	1448-16	0		
	5	BLAZIE,J	1607 0	1	ELSHEIMER,B	0000 0	0		
	6	KOJAK,A	0000 0	0	PAESE,H	0000 0	1		

09-DEC-80 WHEATON COLLEGE		1.5 ANL ROOKS		4.5			
ROUND 5	RD	RATINGS	SCORE	RATINGS	SCORE		
1	LEONARD, T	1758	33	1	JACKSON, J	1937-22	0
2	WALHOUT, M	1819-19	0	0	BERRY, G	1867	13
3	UNDERWOOD, H	1561-13	0	0	WILSON, R	1725	8
4	LUBENEC, S	1432-12	0	0	BAURAC, D	1605	12
5	PAESE, M	0000	0	.5	BECHAN, S	1504	0
6	ELSHEINER, B	1420-16	0	0	SHIRKEY, L	1345	11

11-DEC-80 WE KINGSMEN		3 FERMILABS		3			
ROUND 6	RD	RATINGS	SCORE	RATINGS	SCORE		
1	BROZOVICH, J	1687-14	0	0	WILKINSON, D	1832	14
2	SMITH, BR	1577-13	0	0	GAINES, I	1727	13
3	BLAZIE, J	1607	29	1	HILL, C	1712-29	0
4	HARRINGER, R	1564	15	1	FISCHLER, M	1452-15	0
5	MCHANEL, K	0000	0	1	WALKER, R	1382	0
6	FORFEIT	0	0F	0F	LASSILA, K	0	1F

 RATINGS 

NAME	TEAM	W	L	D	RATING	NAME	TEAM	W	L	D	RATING
ABE, P	APEX	0	1	0	0000?	BLAZIE, J	KNGMN	2	1	2	1636
ABEL, W	PRCON	0	0	1	0000?	BOUERS, A	APEX	0	2	0	0000?
AGEE, L	STAND	2	1	0	0000?	BRIONES, M	ITT	1	0	0	1588*
AGPAWA, T	ZENTH	1	0	0	1625	BROADUS, R	NTRLA	0	1	0	0000?
ALBRECHT, R	SANBT	2	0	0	0000?	BROSIG, A	SIGNB	2	0	0	1677
ALLEN, T	APEX	1	0	0	0000?	BROTSOS, J	EXCAL	4	0	0	1605C
ALOJADO, M	SANBT	1	1	1	1592	BROZOVICH, J	KNGMN	1	3	1	1673
ANKULSKI, J	EXCAL	1	1	0	980*	BRUNER, B	CPCIL	0	1	0	0000?
ANDERSON, C	PLYRS	1	1	1	1540H	BUCHANAN, R	FNBK	0	1	0	1556
ANDERSON, B	ROYLS	3	0	1	1663	BURGER, E	EXCAL	4	0	0	2162
ANDERSON, M	SARAL	1	2	0	1771	BUJUID	MARZA	2	0	1	1548*
ANDRESEN, T	SEARS	2	0	0	1883	BURBA, K	KNIGHT	1	1	1	1408
ANSARI, M	AUSTN	0	1	0	1580*	BYAS, E	CPCIL	1	2	0	1357*
ARNBRUSTER, F	CPCIL	1	1	0	1477*	BYCKOUSKI, M	EXCAL	1	0	0	1496
ATKINSON, J	FNBK	0	1	0	0000?	CAMPBELL, C	STAND	0	1	0	0000?
BALASE, E	SEARS	1	0	0	1435H	CARPENTER, P	TTY2	2	1	0	0000?
BARBER, H	KENPR	0	1	0	1442*	CARUS, B	TTY2	0	1	0	1523*
BARRETT, B	NTRLA	1	0	0	0000?	CATIRON, U	ANOCO	0	0	1	0000?
BAURAC, B	ROOKS	2	1	1	1617	CHAN, H	SEARS	2	1	0	1722
BENEDEK, R	KNIGHT	2	1	0	2132	CHAN, P	SARAL	1	0	0	0000?
BERRY, G	ROOKS	3	0	1	1880C	CHEVERESAN, S	PRCON	1	0	0	1331*
BHOJWANI, C	ROYLS	2	1	1	1700	CHOO, Y	STAND	1	0	1	0000?
BIESZKI, B	NTRLA	1	0	0	0000?	COMROE, R	NTRLA	1	0	0	1279*
BINGLE, J	PAUNS	1	1	1	1568C	CONUAY, F	ZENTH	0	1	1	1434
BLAUMUELLER, F	SANBT	1	1	0	0000?	COOVER, K	KNIGHT	1	2	0	1386*

NAME	TEAM	W	L	D	RATING	NAME	TEAM	W	L	D	RATING
COX, M	ALUMN	1	0	0	1790*	GREEN, D	PAUNS	2	0	1	1645
COHNUTA, P	KEMPR	1	0	0	1124#	GREEN, H	EXCAL	1	2	0	1550
CZARNATA	PRCON	0	1	0	0000?	GREENSPAN, P	NTRLA	1	0	1	1650C
CZERNIECKI	ALUMN	1	1	0	2122	GROSS, D	FERMI	0	1	0	0000?
DALEY, J	PAUNS	0	1	0	1364	HAN, A	CRSDR	2	1	1	1506*
DALKA, C	TTY2	0	3	0	906#	HANSON, D	SARAL	2	0	0	1398*
DARGIS, R	ALUMN	0	1	0	1564	HARRINGER, R	KNGHN	1	1	0	1579
DAWSON, T	WESCH	0	3	0	0000?	HENNING, J	NTRLA	2	0	0	1581C
DEAK, T	PLYRS	1	2	1	1487*	HILL, C	FERMI	0	2	2	1683*
DECHAN, S	ROOKS	3	0	1	1504	HOGENDORP, W	FNBK	1	2	0	0000?
DEE, M	AMOCO	0	2	2	1518	HOLLAND	PLYRS	0	2	0	0000?
DELEON, J	NTRLA	1	0	0	0000?	HOPPNER, P	ROYLS	0	2	2	1730
DETHERS, J	ROYLS	1	0	0	0000?	HOSKINS, E	SIGND	2	1	0	1238*
DEVER, D	KNGHT	1	1	1	1549	HOWANSKY, A	NTRLA	1	0	0	0000?
DEWITT, G	PLYRS	1	1	0	1350*	HUFF, S	SIGND	1	1	0	1379
DIBERARDINO, D	APEX	1	2	0	0000?	JACKLIN	IHARV	1	1	0	1189*
DISSEN, B	CHRGR	1	0	0	0000?	JACKSON, J	ROOKS	1	2	1	1715C
DNYTRENKO, S	PRCON	0	2	0	1476	JACOBS, N	TTY	2	0	0	1860
DOBR, K	CHRGR	2	1	0	1715C	JAKSTAS, K	ROYLS	3	0	1	2075
DONOVAN, E	PRCON	1	0	0	0000?	JOELSON, A	NTRLA	1	1	0	0000?
DORFMAN, L	PRCON	1	0	0	0000?	JOHNSTON, D	KEMPR	1	0	0	1348#
DRAGEL, G	PAUNS	0	1	1	1298	KANAS, W	IHARV	1	2	0	1284*
DULAY	PRCON	0	1	0	0000?	KARLOVICS, S	EXCAL	4	0	0	1878
DUNWORTH, J	ALUMN	1	1	0	1825	KARLSSON, T	ZENTH	0	1	0	1123#
DURKEE, D	TTY	2	0	0	1749*	KARUS, B	TTY	1	0	0	0000?
DYER, G	PLYRS	3	0	0	0000?	KASPER, J	FLPRO	0	1	0	974*
DIADZIC, P	AMOCO	0	0	2	1527*	KELLOGG, K	KNGHT	2	1	0	1629
DZIEDZIC	IHARV	1	0	0	0000?	KIMBLER, C	GAMBT	1	0	0	1572
EDWARDS, S	EXCAL	1	1	0	1223*	KLEIN, A	SIGND	0	1	0	1401
ENRLICH, E	WESCH	0	1	0	0000?	KLEIN, M	STAND	0	1	2	0000?
ELIKAN, F	FLPRO	1	1	0	0000?	KLEHM, J	TTY2	1	3	0	1508
ELSHEIMER, D	CRSDR	3	2	0	0000?	KOJAK, A	KNGHN	0	1	0	0?
ERICKSEN	FLPRO	0	1	0	1131*	KOLENDA	HARZI	1	1	0	1659*
EVANS, V	SIGND	2	1	0	1115#	KOZACKY, J	PRCON	0	0	1	1800
FABIJONAS, R	ALUMN	2	0	0	1825C	KROUSHL, J	PRCON	0	0	1	0000?
FAJKUS, J	CHRGR	2	1	0	1600C	KUBAL, C	GAMBT	1	2	0	1671*
FEILER, K	FNBK	0	1	0	1797	KUMRO, D	CHRGR	2	1	0	1707C
FELDMAN, A	FLPRO	1	1	1	1545#	LACHAPELLE, G	IHARV	1	0	0	1174#
FERNANDEZ, J	FLPRO	1	2	0	1458*	LAMBERT, E	NTRLA	0	0	0	0000?
FIGIEL, J	SIGND	0	1	0	0000?	LASSILA, K	FERMI	0	0	2	0000?
FISCHLER, M	FERMI	1	4	0	1437*	LATIMER, E	SEARS	3	0	0	1962
FORSTER, G	NTRLA	0	0	0	0000?	LEE, RJ	AMOCO	0	3	1	1664
FOGELSON, M	ZENTH	0	1	0	1307	LEMS, V	SEARS	2	1	0	1565
GAFFIGAN, T	FNBK	0	2	1	1651	LEONARD, T	CRSDR	1	2	2	1791*
GAINES, I	FERMI	4	1	0	1740	LEONG, G	KEMPR	1	0	0	1965
GALVIN, J	EXCAL	0	1	0	1543	LESNER, K	SIGND	0	1	0	0000?
GECZY, P	SIGND	1	1	0	0000?	LI, T	ROYLS	1	1	2	1280*
GERNES, L	TTY2	2	1	0	1341*	LICHT, J	GAMBT	0	1	0	1422
GESIOR, A	IHARV	0	1	0	1065#	LITVINAS, A	ALUMN	0	1	0	1440
GIBBS	FNBK	0	2	0	1921	LOPRESTI, P	SIGND	0	1	0	0000?
GILMER, J	TTY	0	2	0	1435	LUBENEC, S	CRSDR	2	2	1	1420#
GLENN, S	FNBK	1	0	0	0000?	MADISON	PLYRS	1	2	0	0000?
GOLLA, R	SEARS	0	1	1	1842	MAGEE, D	STAND	0	1	0	0000?
GONCHAROFF, N	NTRLA	1	1	1	1789C	MANZKE, B	TTY	2	0	0	0000?
GRAFT, D	WESCH	2	1	0	1733	MARCOUKA, R	CHRGR	3	0	0	1882

NAME	TEAM	W	L	D	RATING	NAME	TEAM	W	L	D	RATING
MATHEUS, J	ALUMN	0	0	0	0000?	SCHULMAN, R	ZENTH	1	1	0	1836
MAY, B	WESCH	0	1	0	1187*	SCHWARTZ, S	SEARS	1	0	0	1697C
MCAHREL, K	KNGHN	1	1	0	0000?	SCOTT, R	PRCON	0	1	0	0000?
MEISINGER	GAMBT	0	2	0	0000?	SELIN, E	FNBK	0	2	0	0000?
MEYER, D	WESCH	0	1	0	0000?	SHAFF, R	KNGHN	0	1	0	1477
MICKLICH, F	PRCON	0	1	1	0000?	SHAFFER, R	STAND	0	1	0	0000?
MIGNERON, R	FERMI	0	2	0	0000?	SHAPIRO, H	FLPRO	1	1	1	0000?
MIHAILOVICH, S	PAUNS	2	0	1	1880C	SHIRKEY, L	ROOKS	3	0	0	1545C
MONZANI, A	FLPRO	1	1	0	1648*	SHUKLA, P	TTY2	1	2	0	1319*
MORGAN	STAND	0	1	0	0000?	SINCLAIR, L	HARZA	1	0	0	0000?
MOTYCKA, R	IHARV	1	3	0	1244	SINDEWALD, B	WESCH	1	0	0	0000?
MUDDE, J	CPCIL	0	2	1	1251	SIVULA, B	SARAL	0	1	1	1548
MUIR, L	ANOCO	1	2	1	1627	SKINNER, S	ZENTH	0	3	0	0000?
MUNOZ, R	HARZI	1	2	0	1679	SKUJINS, P	KENPR	1	0	0	1564*
NAIL, D	STAND	0	1	0	0000?	SKULSKI, I	ZENTH	0	0	0	0000?
NEUMARK, J	MTRLA	0	0	2	1723C	SMITH, BR	KNGHN	1	3	1	1564
NIMRY, T	ANOCO	0	4	0	0000?	SMITH, H	FNBK	1	2	0	1419*
NINKOVIC, S	ZENTH	1	2	0	1524*	SOBUN, J	KNGHN	1	0	0	1572
NURME, U	HARZI	1	1	1	1933*	SOPYRCH, T	STAND	2	1	0	0000?
O'NEAL, J	WESCH	0	2	0	0000?	SPANGLER, M	ANOCO	2	1	1	1505*
DELHAFEN, A	APEX	0	2	1	0000?	SPLAVER, H	PLYRS	3	0	0	1941
OGASAWARA, R	MTRLA	3	0	0	1627C	STAMM, V	GAMBT	2	1	0	1610C
OSBORNE, U	STAND	0	1	0	0000?	STEJSKAL, J	CPCIL	0	2	1	1296
OWENS	IHARV	0	2	0	0000?	STELTON, H	WESCH	2	1	0	0000?
PAESE, H	CRSDR	1	0	1	0000?	STENSAKER, L	SIGND	2	1	0	1543
PARKER, L	KNGHN	0	2	1	1866	STOCK, R	GAMBT	0	2	0	1223H
PARMETER, S	CPCIL	0	2	0	1603	STREETS, D	PAUNS	3	0	0	2092
PASTURCZAK, RJ	SIGND	2	1	0	1409	STUHLBARG, D	PRCON	1	0	1	1359
PEEL, A	IHARV	2	1	0	1644*	STYS, A	PRCON	0	0	1	1835
PETERSON, H	KNGHT	2	0	0	1823C	SUE, H	TTY2	2	2	0	1479*
PETERSON, W	IHARV	1	1	2	1672*	SULLIVAN, J	EXCAL	1	0	0	1859C
PETTY, B	ANOCO	0	1	0	0000?	SUIDERSKI, M	CHRGR	2	0	2	1439
PFEFFER, H	FERMI	0	1	0	1447	SZATHARY, F	SARAL	1	1	1	1384
PLANT, B	KNGHN	1	0	0	1615H	TATRO, B	SARAL	0	3	0	0000?
POKATILOFF, W	FLPRO	0	2	1	1385*	TEGEL, F	TTY	1	1	0	2016C
POPPS, U	WESCH	1	2	0	1562*	THOMAS, G	PLYRS	2	1	0	1350*
PRESCOTT, F	GAMBT	2	0	0	0000?	THOMAS, J	GAMBT	1	1	0	1414
RACUTT, E	APEX	0	2	1	0000?	THOMPSON, R	FLPRO	0	1	0	1217H
RADAVICIUS, E	CHRGR	2	1	1	1615	TOLLENTINO, E	ANOCO	0	1	0	0000?
RATAJCZAK, J	SARAL	0	3	0	1184*	TOLSON, H	MTRLA	0	0	1	0000?
RAVANAN, S	IHARV	0	0	1	1220H	UNDERWOOD, H	CRSDR	1	3	0	1548*
REYES, R	SEARS	3	0	0	2312	URBAS, B	CPCIL	0	1	0	1527
ROBINSON, B	ZENTH	0	1	0	1313H	VICK, H	MTRLA	1	1	0	1518*
ROD, R	STAND	0	1	0	0000?	VITERI, H	PRCON	1	1	0	1542
ROSEN, J	KNGHN	1	0	1	1564	VOLPE, H	EXCAL	1	0	0	1282
SANDY, A	HARZA	1	0	0	1927H	VUKSANOVICH, B	HARZA	1	1	0	0000?
SAMELSON, C	PLYRS	3	1	0	1679*	WAGNER, R	TTY	1	0	1	1697*
SANDY	HARZA	0	1	0	0000?	WALHOUT, H	CRSDR	3	1	1	1800
SAPP, B	STAND	0	1	0	0000?	WALKER, B	CPCIL	0	1	0	0000?
SATTERLEE, B	IHARV	0	3	0	1633	WALKER, R	FERMI	1	3	1	1382


NAME TEAM W L D RATING

NAME TEAM W L D RATING

WALSH, U	PAUNS	1	1	0	1531
WARD, C	PLYRS	2	2	0	1622C
WARREN, J	CHRGR	2	1	0	2018C
WEIGAND, J	ZENTH	0	2	0	1335*
WEITZ, R	FLPRO	1	0	0	1315*
WENTLING	STAND	0	0	1	0000?
WESTON, P	ROYLS	2	1	1	1420
WETTERSTEN, H	CHRGR	2	0	0	1372
WHITTENHALL, T	APEX	0	1	0	0000?

WHITTENHALL; JR	APEX	1	1	0	0000?
WHITTENHALL; SR	APEX	0	3	0	0000?
WIENCEK, T	ROOKS	0	1	0	0000?
WILKINSON, D	FERKI	3	1	1	1846*
WILSON, A	ALUKN	2	0	0	1573
WILSON, R	ROOKS	1	1	2	1733C
WONG, P	EXCAL	3	0	0	2023
YOUNG, C	KNHT	1	1	1	1825
ZVERCHER, J	TTY	1	1	0	1364*

? - UNRATED
 # - 5 TO 9 GAMES
 * - 10 TO 24 GAMES
 C - CENTURY CLUB MEMBER



ILLINOIS CHESS BULLETIN

Official Publication of the Illinois Chess Association, a USCF Affiliate

The ILLINOIS CHESS BULLETIN is published 6 times per year.

The Illinois Chess Association is a not-for-profit organization dedicated to the promotion of chess in Illinois. Magazine features include up-to-date reporting on chess tournament activity in Illinois, with many games annotated by Illinois chess masters and experts. The ILLINOIS CHESS BULLETIN gives advance notice for major chess tournaments in our state and provides a list of chess clubs.

SUBSCRIBE TO THE ILLINOIS CHESS BULLETIN

Subscription to the ILLINOIS CHESS BULLETIN includes a 1 year membership in the Illinois Chess Association, an affiliate of the U.S. Chess Federation. As well as publishing the ILLINOIS CHESS BULLETIN, the ICA organizes chess tournaments in Illinois and serves as a federation of chess clubs and other chess organizations throughout the state. ICA officers donate their time; no one is paid.

During the last 2 years since Helen Warren became Editor for the ICB, the ILLINOIS CHESS BULLETIN, as the premier state chess publication in the United States, has received numerous chess journalism awards. By subscribing to the ICB, you are not only assuring yourself of the best chess news coverage for Chicago and Illinois. You are also helping to support chess in Illinois.

Regular 1 year subscription is \$5. Patron Membership is \$25.

Send subscriptions to :

HELEN WARREN, EDITOR, ILLINOIS CHESS BULLETIN, P.O. BOX 70,
WESTERN SPRINGS, ILLINOIS 60558

NAME _____

ADDRESS _____

CITY & ZIPCODE _____

ARE YOU A USCF MEMBER ? _____

RATING _____

Please make your check payable to the Illinois Chess Association.

\$5 REGULAR MEMBERS \$25 PATRON