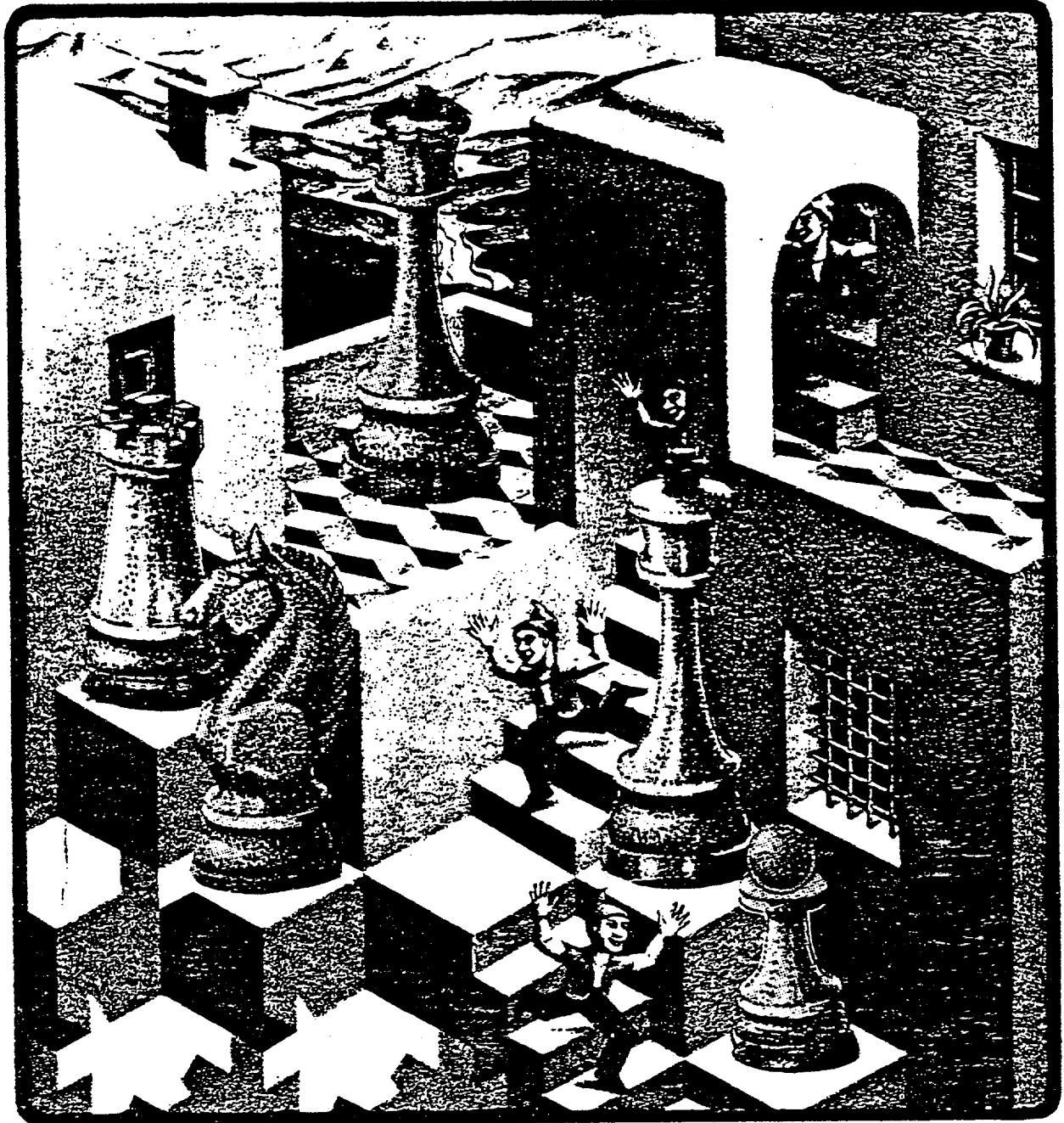


CHICAGO INDUSTRIAL CHESS LEAGUE BULLETIN

VOLUME 24, NUMBER 5, FEBRUARY 1981



**USCF AFFILIATE
FOUNDED 1957**



CHICAGO INDUSTRIAL CHESS LEAGUE
OFFICERS, 1980-81



President:

Gee Leong
Kemper Insurance Co.
Field Systems B-3
Long Grove, IL 60047
540-2233 (work)
367-4132 (home)

Secretary:

Charles Ward
Dept. 5446, Room 6H341
Bell Telephone Laboratories
Warrenville & Naperville Roads
Naperville, IL 60556
462-6250 (work)
325-3885 (home)

North Division Chairman:
Treasurer:

Jim Brotsos
6563 N. Tahoma Ave.
Chicago, IL 60646
775-5054 (home)

Near West Division Chairman:

Dan Kumro
802 S. Elmhurst Road
Mt. Prospect, IL 60056
981-2221, 981-2224 (work)
259-4981 (home)

East Division Chairman:

Tom Gaffigan
First National Bank
16th Floor
1 First National Plaza
Chicago, IL 60670
732-3988

Far West Division Chairman:

Joe Brozovich
Western Electric Co.
Indian Hill, Room 4F408
Warrenville & Naperville Roads
Naperville, IL 60556
462-6545

Bulletin Editor:

Don Graft
Rockwell-Wescom
8245 Lemont Road
Downers Grove, IL 60515
985-9000, ext. 2731

Ratings Chairman:

Paul Weston
1741 Violet Street
Aurora, IL 60505
983-4090 (work)
898-7683 (home)

GRAFFITI

Readers will be pleased to hear that a volunteer has come forward to coordinate the printing and distribution of the CICL BULLETIN, namely Norm Hughes of Kemper Insurance. Kemper has kindly offered to print the BULLETIN gratis for the remainder of this year, and to charge a reasonable cost for future seasons. Norm will handle distribution of the BULLETIN while I will continue as Editor. I will turn over my mailing lists to Norm. Thus, readers should direct inquiries about subscriptions directly to Norm. He can be reached at 540-2354. On behalf of the readers, I thank Norm for volunteering for this thankless task.

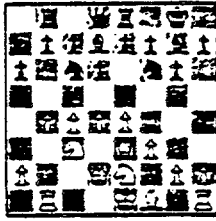
In the transition to the new system of BULLETIN production, we may run into some quality problems. Different printing and duplicating methods often are not comparable in terms of quality of reproduction and tolerance of particular forms of camera copy (for example, halftones).

As noted elsewhere in this issue, the Spring Business Meeting is being held April 23 at Albright Gym. Gee Leong has asked me to publish a call for volunteers for CICL offices. In Gee's words, "...the League needs some fresh faces...". So, anyone that is interested in serving in one of the elective CICL offices should contact Gee Leong immediately (see list of CICL Officers on page 3).

As long as we are on the subject of volunteers, this seems a good time to call for material for publication in the CICL BULLETIN. Have you never experienced the thrill of seeing your name appended as a by-line to a published article? We will accept virtually any chess-related material, including, but not limited to, the following: analysis, match or tournament reports, chess stories and anecdotes, chess-political statements, chess graphics and cartoons, book reviews, and reviews of electronic chess automatons. Don't worry about your 'bad writing' or spelling. We can soon clean that up. Send any material for publication to me at the address given on page 3.

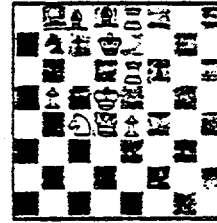
I close on a sad note. Gerry Dyer of the Bell Laboratories Chess Players died February 7 of complications resulting from influenza. I have only met Gerry twice during matches but can testify that, despite his being handicapped and confined to a wheelchair, his mind was extremely alert when confronting chess problems (he knocked off one of my teammates in 9 moves with a King's Gambit!). This was Gerry's first year of CICL competition but he was a long-standing chess player and supporter of chess in general, according to Chris Samelson, team captain of the BTL Players. We offer our condolences to Gerry's family, friends, and teammates. Perhaps chess can be credited with having made Gerry's life more enjoyable, certainly Gerry's active participation in the CICL and other chess organizations points up the eternal fraternity of chess, friendship without regard to race, sex, handicap, age, etc.

Don Graft



GAMES

By Dave Baurac



French Defense: S. Decman, Argonne Rooks-J. Sobun, Western Electric Kingsmen, 1981.

1. P-K4 P-K3 2. P-Q4 P-Q4 3. P-K5 (The Advance Variation, favored by Nimzovich, who felt the PK5 cramped Black's K-side and supported a White attack on that wing. Today, it is considered a weak line against the French.) P-QB4 4. P-QB3 N-QB3 5. N-KB3 KN-K2 6. B-Q3 PXP 7. PXP Q-N3 (More consistent with Black's fifth move is ECO's suggestion, 7. ... N-B4 8. BxN PxB 9. N-B3 B-K3 10. N-K2 B-K2 11. P-KR4 P-KR4 with equality.) 8. O-O (Setting the trap 8. ... NxQP?? 9. NxN QxN 10. B-N5ch.) B-Q2 (The trap is well known; now Black threatens to win the QP.) 9. N-QB3 (White invites Black on a pawn-grabbing expedition. In return, White gets superior development, fine central squares for his pieces, gaping holes in his opponent's position and an enemy king that cannot castle.) NxP 10. NxN QxN 11. N-N5 QxKP 12. P-KB4! Q-N1 13. P-B5 NxP (If 13. ... P-QR3 14. Q-B3! with the attack -- ECO.) 14. B-KB4 B-Q3 15. NxB NxN 16. Q-N4 P-KN3 17. B-K5 R-B1 18. Q-KB4 K-K2 19. Q-R4ch K-K1 20. QxP Q-B2 21. QR-B1 Q-N3ch 22. K-R1 N-KB4 23. BxN KPxB 24. Q-KR4 B-K3 25. R-B7 P-KB3 26. KR-B1 Q-K6 27. BxP R-B1 28. Q-R4ch. 1-0.

A Karpov brilliancy.

English Opening: Timman-Karpov, Montreal, 1979.

1. c4 Nf6 2. Nc3 e5 3. Nf3 Nc6 4. e3 Be7 5. d4 ed 6. Nd4 O-O 7. Nc6 bc 8. Be2 d5 9. O-O Bd6 10. b3 Qe7 11. Bb2 dc! (If 11. Rd8 12. cd Qe5 13. g3 with advantage to White.) 12. bc?! (Better is 12. Bc4 Ng4 13. g3 Nh2 14. Kh2 Qh4+ with equality.) Rb8 13. Qc1 Ng4 (A new move.) 14. g3 Re8 (Intending 15. ... Nh2 16. Kh2 Qh4+ 17. Kg1 Bg3 18. fg Qg3+ 19. Kh1 Re6, and Black wins.) 15. Nd1 Nh2 16. c5 Nf1 17. cd Ng3! (Black has a won game.) 18. fg Qd6 19. Kf2 Qh6 20. Bd4 Qh2+ 21. Kel Qg3+ 22. Kd2 Qg2 23. Nb2 Ba6 24. Nd3 Bd3 25. Kd3 Rbd8 26. Bf1 Qe4+ 27. Kc3 c5! 28. Bc5 Qc6 29. Kb3 Rb8+ 30. Ka3 Re5 31. Bb4 Qb6. 0-1.

And a rare Karpov defeat.

Catalan Opening: Olafsson-Karpov, Buenos Aires, 1980.

1. P-Q4 N-KB3 2. P-QB4 P-K3 3. P-KN3 P-B4 4. N-KB3 PXP 5. NxP Q-B2 6. Q-Q3 P-QR3 7. B-N2 N-B3 8. NxN QPxN 9. Q-O B-K2 10. Q-N3 P-K4 11. B-K3 N-Q2 12. N-B3 N-B4 13. Q-B2 B-N5 14. P-QN4 N-Q2 15. P-N5 O-O 16. PxBP PXP 17. QR-N1 B-K3 18. Q-R4 KR-B1 19. KR-B1 N-B4 20. Q-B2 P-N3 21. N-K4 B-B4 22. BxN BxB 23. R-N3 B-K2 24. KR-N1 QR-N1 25. P-KR4 P-QR4 26. K-R2 R-N5 27. P-QR3 RxR 28. QxR R-Q1 29. P-K3 Q-Q2 30. Q-B3 Q-B2 31. R-N2 R-Q8 32. P-B5 B-K3 33. R-N6 B-Q4 34. QxRP Q-Q2 35. Q-R8ch K-N2 36. R-N7 Q-K3 37. Q-K8 BxN 38. BxB Q-B3 39. QxB QxBPch 40. B-N2. 1-0.

Sicilian Defense: Kagan-Plachetka, Skara, 1980.

1. e4 c5 2. Nf3 e6 3. d4 cd 4. Nd4 Nc6 5. Nc3 d6 6. g3 Bd7 7. Bg2 Nf6
8. O-O a6 9. b3 Be7 10. Bb2 Nd4 11. Qd4 Bc6 12. Nd1! O-O 13. Ne3 Qc7
14. c4 b6? (Intending ... Qb7; better is 14. ... Rfd8, followed by ...
Nd8 and ... Bf6, though White would still hold a small advantage.) 15.
Rfe1 Rfd8 16. Rac1 Qb7 17. Nc2! (Intending 18. Nb4, with the better
game.) d5 18. ed ed 19. Qf4! (White is winning. He intends Nd4, Nf5.)
Bc5 20. Bf6 gf 21. b4! (21. Qf6? Rd6 is unclear.) Bf8 22. Nd4 Bb4 23.
Nf5! (White has a won game.) Bf8 24. cd (24. Re7! wins quickly; e.g.,
24. ... Be7 25. Qg4+ Kf8 26. Qg7+ Ke8 27. Re1, etc.) Bd5 25. Rc7 Bg2
(25. ... Qb8 26. Bd5 Rd5 27. Qg4+ Kh8 28. Rf7.) 26. Rb7 Bb7 27. Qc7
(White is short of time.) Bd5 28. Qb6 Re8 29. Ra1 Re6 30. Qd4 Be4 31.
Ne3 Rc8 32. Qd7 Rec6?? (Black is also in time trouble.) 33. Qg4+ Kh8
34. Qe4. 1-0.

Queen's Pawn Game: Nikolic-Bukic, Yugoslavia, 1980.

1. d4 Nf6 2. Nf3 g6 3. Bg5 Bg7 4. Nbd2 c5 5. e3 O-O 6. c3 b6 7. Bf6
ef 8. dc bc 9. Nb3 Qb6 10. Qd5 d6 11. O-O-O Be6 12. Qd6 Rc8 13. Qb6
ab 14. Nfd2 Ra2 15. Bc4 Bf5 16. Nb1 Nc6 17. Bd5 Nb4 18. e4 Bh6+ 19.
N1d2 Nd5 20. ef c4 21. Kc2 cb 22. Kb3 Ra5 23. Nc4 Rb5+ 24. Ka4 Rbc5 25.
Nd6 Ra5+ 26. Kb3 Rc6 27. Ne4 Bf8 28. g4 Kg7 29. h4 Rb5+ 30. Kc2 h6 31.
h5 g5 32. Rd4 Rc8 33. Rhd1 Nb4+ 34. Kb1 Nc6 35. Rc4 Re8 36. Rc6 Re4 37.
Rc8 Re2 38. b4 Bb4 39. cb Rb4+ 40. Kc1 Ra4 41. Kb1 Rb4. 0-1.

Queen's Pawn Counter Gambit: Blasko-Ivanovic, Catanzaro, 1979.

1. e4 e5 2. Nf3 d5?! 3. Ne5 (3. ed! e4 4. Qe2!) de 4. d4 (4. Bc4 Qg5!
is unclear.) Nd7! 5. f4?! Nh6 6. Bc4 Nb6 7. Bb3 Qh4+ 8. g3 Qh3 (Advantage
to Black.) 9. Qe2 f6 10. Nc4 Bg4! 11. Qe4+ Kd7 12. Nb6+ ab 13. Qb7 Bb4+
14. Nc3 Rhe8+ 15. Kd2 Ra7! 16. Qd5+ Kc8 17. Kd3? Bf5+ (Black has a won
game.) 18. Kc4 (If 18. Kd2 Rd4 wins. After 18. Kc4 Bf8 19. Qc6 Re6 20.
Qf3 Qh5! 21. Qh5 Rc6+ 22. Kd5 Ra5+ 23. Kc6 Bd7 mate, so White resigned.)
0-1.

Nimzoindian Defense: B. Spassky-R. Huebner, Munich, 1979.

1. d4 Nf6 2. c4 e6 3. Nc3 Bb4 4. e3 b6 5. Ne2 Ba6 6. Ng3 O-O 7. e4 Nc6
8. Bd3 e5 9. d5 Na5 10. Qe2 Bc3+ 11. bc c6 12. Nf5 Ne8 13. f4 Qc7?!
(13. ... f6!) 14. fe! Qe5 15. O-O f6 16. Bf4! Qc3 17. Rac1 Qa3 18. d6!
Nb7 19. Ne7+ Kh8 20. e5 fe 21. Be5 Nf6 22. Bh7!! Nd6! 23. Qf2?! (23.
Bb1!) Ng4? (23. ... Nh7!) 24. Qd4 Qe3+ 25. Qe3 Rf1+ 26. Rf1 Ne3 27.
Rf3 Nc8 28. Bg6!! 1-0.

Bishop's Gambit: A. Anderssen-L. Kieseritzky, London, 1851. Though not played in the famous London tournament of that year, the game is known to chess history as "The Immortal Game."

1. P-K4 P-K4 2. P-KB4 PxP 3. B-B4 (3. N-KB3!) Q-R5ch (This reflex check is the Classical Defence to the Bishop's Gambit. Today, 3. ... N-KB3 is considered best.) 4. K-B1 P-QN4 (The Bryan Counter Gambit; the idea is to disrupt the coordination of White's attack on Black's KB2. According to Euwe, 4. ... P-Q4 is better.) 5. BxP N-KB3 6. N-KB3 (6. N-QB3 N-N5 7. N-R3 N-QB3 gives Black attacking chances.) Q-R3 (Better is 6. ... Q-R4 followed by ... P-N4.) 7. P-Q3 N-R4 (7. ... P-N4!) 8. N-R4 (8. K-N1 or K-B2 drops the B to 8. ... Q-N3ch.) Q-N4 (Better is 8. ... P-N4 9. N-B5 Q-KN3.) 9. N-B5 P-QB3 (9. ... P-N3 10. P-KR4 Q-B3 11. N-B3 and White's advanced posts are secure.) 10. P-KN4 N-B3 11. R-N1! (For his piece, White drives the black Q into a corner and gains a huge lead in development.) PxB 12. P-KR4 Q-N3 13. P-R5 Q-N4 14. Q-B3 (Threatening to win the Q with 15. BxP. White has more than enough compensation for the piece.) N-N1 (Euwe recommends the counter sacrifice 14. ... NxNP! to try and break up the attack.) 15. BxP Q-B3 16. N-B3 (threatening 17. NxP and 17. N-Q5.) B-B4 17. N-Q5 (17. P-Q4, as Reti pointed out, is a simple, safe, move that wins. Objectively, it is better than the text, but the game was played in the mid-19th century, when winning beautifully was more important than winning.) QxP 18. B-Q6! (The "immortal" sacrifice.) QxRch (After 18. ... BxB, White mates in four.) 19. K-K2 BxR (If 19. ... QxR, White mates in two, but 19. ... Q-N7! leaves the outcome still in the air.) 20. P-K5!! (Threatening 21. NxPch K-Q1 22. B-B7 mate.) N-QR3 (Best under the circumstances, but still insufficient, is 20. ... B-R3; for example, 21. N-B7ch K-Q1 22. NxB B-N3 23. QxR Q-B6 24. QxNch Q-B1 25. QxQch KxQ 26. B-B8 P-R3! 27. N-Q6ch K-Q1 28. NxPch K-K1 29. NxB KxB 30. N-N6ch K-B2 31. P-B3 K-K3 32. P-Q4, and White's extra pawn should win.) 21. NxPch K-Q1 22. Q-B6ch! NxQ 23. B-K7 mate. 1-0

Benko Gambit: Unzicker-Miles, South Africa, 1979.

1. d4 Nf6 2. c4 g6 3. g3 c5 4. d5 b5 5. cb a6 6. ba Bg7 7. Nc3 Ba6 8. Nf3 d6 9. Bg2 Nbd7 10. O-O Nb6 11. Re1 O-O 12. Nd2 Qd7 13. Rb1 Qb7 14. b4 Nfd7 15. bc Nc5 16. Bb2 Qd7 17. Nce4! Nba4! 18. Bg7 Kg7 19. Nc5 Nc5 20. Nb3 Rfc8 21. Rcl Nb3 22. ab Kg8! 23. Bf3 Qb5 24. Rc8+ Rc8 25. e4 Qb4 26. Kg2? Rc3 (Slight advantage to Black.) 27. Qal Rb3 28. Rcl Ra3 29. Qb1 Qd4! 30. Rdl? Qf6 (Black has increased his advantage.) 31. Bg4 h5 32. Bh3 Be2?? (32. ... Qf3+ 33. Kgl Ra2!! wins.) 33. Re1 Bd3? (The game is even.) 34. e5! de 35. Qb8+ Kg7 36. Qe5 Qe5 37. Re5 Ral 38. Bd7 Kf6 39. Re3 Bc4 40. Bc6 g5 41. f4! Ra2+ 42. Kgl Ral+ 43. Kg2 g4 44. Re5 Ra2+ 45. Kgl Ral+ 46. Kg2 Ra2+ 47. Kgl Be2 48. Rh5 Bf3 49. Bd7 Rg2+. 1/2-1/2.

Please send games to Dave Baurac, 7517 Country Lane South, Darien, Illinois 60559. If you give notes, you are entitled to a diagram, so be sure to indicate where you want it.



AN EXCITING PROSPECT FOR ILLINOIS CHESS

Dear Ms. Warren,

This is a very important, but long-delayed letter, and hopefully contains news of superb information for chess players within the range of Channel 11.

Some six months ago, at the request of ICA, I talked with top management at WTTW about the possibility of televising (!) the 1981 World Championship. The response was amazingly gratifying... "we'll probably be able to accede to your request..." That response came from top management, not some 88th level executive in charge of mollifying feelings of people who call with program ideas (any television station, especially one as outstanding as 11, receives dozens of such calls weekly).

Encouraged by this, some ICA members and "old-timers" held a meeting in my new, lovely home last spring. We had lots of wine, beer, champagne, and my wife's fabulous baked goods. My wife, who was *summa cum laude* in the University of Wisconsin system and is used to being surrounded by my friends, still maintains that, "Your chess friends are the most intelligent and interesting people we've met."

Well. Sometimes I think I should have been a gossip columnist instead of an editorial commentator and newspaperman, but we sure had a lovely evening. We even managed to discuss the reason we came--setting up a situation in which the incredible success of 1972 would be repeated.

For the benefit of the children who don't remember it, in 1972 Channel 11 televised the Fischer-Spassky match, with myself as host. It was a tremendously successful show, in fact on one Sunday it is said we outdrew a Sox-Yankees doubleheader. My major assistant on that show, in front of camera, was Dick Verber, but we had dozens upon dozens of guests who helped analyze the play, tell chess stories, and otherwise try to keep an audience fascinated between moves (which were relayed by telephone from Iceland).

We had Judge Leighton and Dr. Martinovsky, Pete Wolf and Shelley Gelbart; we had women chess players and patzers, masters and C players. Always we kept the show "moving", and we were a bit more than quite a hit. In fact, our cameramen had a board on a stool between them and were skittling during the telecast. We had the help of literally hundreds of Illinois chess players, and we brought in guests from Wisconsin and Indiana as well.

For both chess and Channel 11 it was a great success--more than 1,000 letters were received with contributions to Channel 11! Imagine Fischer-Spassky (or was it Lerner, Verber, and Illinois chess?) brought in needed dollars that have since brought us Monty Python, Dr Who, Carl Sagan, Masterpiece Theater, and so on through the spectrum of public television. Indeed, we have always believed that it was chess that brought Channel 11 into the realm of the foreign-born segment of Chicago's chess community--if the name is hard to pronounce in English, the chances are good it subscribes to public television.

Anyway, it was a tremendous show. The number of people who worked the boards, ran moves, answered telephones, and otherwise helped out in the production is prodigious. It is a matter of pride to hundreds to have claimed they worked with me on producing one of television's most under-rated hits--the

World Championships of 1972. In the future, Ms. Editor, I am going to rack my memory for as many of the names as possible, and write you an article in commemoration of them all.

One letter from an Executive of the FIDE (World Chess Federation) read, in part, "...The Chicago broadcast of the world championship with Lerner and dozens of guests was the most exciting, most professional, most "watchable" public televising of chess we have ever seen. With intelligence, humor, grace, motion, and their sense of history, the Chicago show was never dull. It was even of good interest to the non-player. It was good television, regardless of its subject material. Lerner, an award-winning newspaper journalist, had the presence to give us analysts who ranged from the cool masters to the excitable patzers. We've seldom seen a report on chess that built such excitement..."

But that was more than eight years ago. Nothing is deader than yesterday's newspapers. Today, we may have a new chance to repeat that quiet triumph.

The meeting in my home decided to make me chairman of the committee to beg WTTW. It also promised the total support of all of chess in the midwest, which goes without comment.

Now since then: WTTW, like many stations, is not prepared to make commitments too early. A month's notice is all that's often required, and often all that a station can make. So progress talking with WTTW has been almost non-existent, because the station is in no way able to commit itself fully at this time--in fact, for all we know it may be the better part of a year before we'd know how likely the possibility is.

- We can most likely assume that the televising of the Karpov vs Mr. X is a bit more probable than not. Whatever "we" ends up "running the show" will be calling on all of chessdom for help, and we'll get it, of course, so don't be surprised if your telephone rings. Regardless of Channel 11's ultimate decision, we will be prepared to give them the show on very short notice.

The biggest problem is preparing for a dozen different types of shows. Will be be three hours live, such as '72? Will we be 15 minutes twice a week with an update? Will we be somewhere betwixt and between? We need to be prepared for every eventuality, to give Channel 11 whatever it wants and needs. I'll even get a haircut.

Anyway, what this really is, Ms. Editor, is a public statement of what's been rumor. The possibility of televising the match is strong. How strong I won't know until it's reasonable to discuss the matter with Channel 11 executives again. We have to be prepared in so many ways--depending on where the match is held, the time frame is complicated by the time differential... and arrangements have to be made for move transmission. We don't even know if Channel 11 wants a repeat of the '72 format (although it certainly worked well in building audience and creating contributions for the station, which--believe it or not--is my major concern: public television is as important as the public schools, and must be preserved).

CONT'D. NEXT PAGE...

In following editions of the ICB I'll update matters more briefly. For all we know, the preparation may be in vain, and this all a tempest in a teapot--but a lot of folks thought that was the case in 1972, and ended up on Channel 11 telling the world what they thought Fischer's next move would be! Heck, we even had (macHeck, I think) the computer at Northwestern University linked by telephone, and had it predict some of the moves! We didn't miss a trick, did we?

Before closing this epistle, which already has been stretched out as if it were a human figure painted by the Mannerists, may I remind you that in the

state of Illinois (or anywhere) there are more people who play chess than any other game or sport. More people have heard the name of Bobby Fischer than of Terry Bradshaw, Reggie Jackson, or Kareem Abdul-Jabbar.

So, in the words of the legendary Frank Skoff, "Don't fall for any cheap traps." Take all his pawns in the Danish. Don't get into a Dragon with Leighton. Don't forget to castle. And in memory of "Gumble" ..don't go to a tournament in Milwaukee without a chicken...

Robert Lerner
Lerner Newspapers
Chicago

Reprinted with permission from Illinois Chess Bulletin, December 1980



THE CHICAGO INDUSTRIAL CHESS LEAGUE STORY

The Chicago Industrial Chess League (CICL) is composed of 30 teams and close to 300 members in the Metropolitan Chicago area. The CICL's main program consists of team play, but also includes some individual tournaments and awards. The competitive season generally extends from Labor Day to Memorial Day with an Awards Banquet in mid-June.

The CICL was begun in 1957 with six 8-man teams. In 1969, 4-man teams were introduced and the CICL's growth has been phenomenal since then. Further expansion has also come about with the introduction of the Alumni team concept in 1970. This permits players who have left CICL-affiliated companies or whose companies have resigned from the CICL to band together and continue playing as a team. In 1976, the CICL consolidated into one 6-man team concept with four geographic divisions.

The CICL is headed by a President. Under him are Division Chairmen governing the North, East, Near West, and Far West Divisions, a Treasurer, and a Secretary. In addition to these elected officers, the CICL also has a Ratings Chairman, an Awards Chairman, a Banquet Chairman, a Publicity Chairman, and other appointed offices as required by the President. A monthly bulletin carries news, special announcements, team standings, individual ratings, and general chess-related material.

The CICL's program includes a Tornado tournament, a Speed Chess tournament, trophy awards to the top teams in each division and the James E. Warren Award--plaques awarded to the players with the highest average ratings or highest gain in rating points during each season. There is opportunity for members to participate from twice to twenty times per year depending on their interest and the CICL schedules.

In order to join the CICL, a group of chess players with a common employer (business, educational institution, or governmental agency) should arrange to have:

- (a) Enough interested players to support a team for ten months. Generally, a 6-man team requires 9 players. You never have enough substitutes.
- (b) A Team Captain who has access to a telephone during working hours and also an Alternate Captain.
- (c) The ability to pay annual team dues plus a fee for an annual subscription to the CICL BULLETIN and a ticket to the awards banquet.
- (d) A willingness to become acquainted with the CICL's Policies and Rules and to abide by them.
- (e) A home base for playing half of its team matches after working hours. This is normally a cafeteria, conference room, training center, or office in the group's working spaces, but it could be a private home or a rented hall.
- (f) An ability to provide boards, sets, and clocks for home matches.

New teams are normally voted into the CICL at the August Business Meeting, but can sometimes be brought into the CICL through special polls or meetings.



CICL SIMULTANEOUS DISPLAY ANNOUNCEMENT



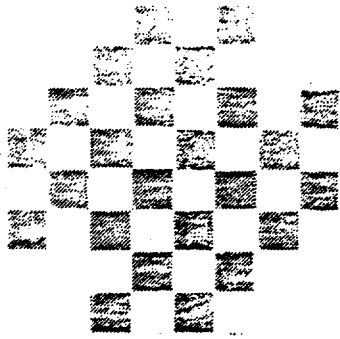
On March 21, 1981, at 12:00 noon, USCF Master Gene Martinowsky will give a simultaneous display. The display will be held at Western Electric's Albright Gym (50th Avenue and West Cermak Road). The board charge for CICL members is \$2.00. For non-CICL members, it is \$3.00



SPRING BUSINESS MEETING ANNOUNCEMENT



The Spring Business Meeting will be held on Thursday, April 23, 1981 at 6:30pm in the Western Electric Albright Gymnasium. Albright Gymnasium is located on Cermak, two blocks west of Cicero. Call Vern Stamm for detailed directions. All CICL members are invited to attend.



A GAME FOR FOUR?

By Don Grafc

In The Battle Of Chess Ideas Anthony Saigy writes:

"The consensus of historians is that chess began in India in the sixth or seventh century. Its precursor was a four-handed dice game called chaturanga ('four members of the army'). At some point the dice, and with them the element of blind chance, were discarded, and chess was born. It is not exactly the game we know today--for example, the powerful queen did not yet exist."

We feel obliged to put forward an alternative view of chess history, one that sees four-sided chess as an offshoot of the two-sided game, and not as the precursor of the two-sided game. With this alternative view, the four-sided game stands to modern chess as the gorilla stands to man, a branch off the main evolutionary tree.

There is no doubt that Chaturanga was a precursor of chess as played today, and there is no doubt that Chaturanga means literally 'four arms', but we cannot conclude that four armies and players were involved. Here are some supporting arguments.

At the time Chaturanga was played, the Queen did not exist. The only pieces existing then were the elephant (now the rook, which is sometimes formed as an elephant carrying a cab), the chariot (now the bishop), the infantry (pawns), and the cavalry (knights). Thus, the term 'four arms' can be interpreted as a reference to the four basic components of the army commanded by a King, and not as a reference to four players.

An ancient text refers to a four-handed game called Chaturaja (meaning 'four kings'). It is possible that researchers confused the words Chaturanga and Chaturaja, leading them to confuse the four-handed offshoot with the two-handed precursor.

The history of chess shows no reversions to a less complex state. Pieces were added and powers were increased, not to mention the addition of new rules. This represents an increase in complexity as chess evolved. Are we to suppose that chess began as a four-handed game and evolved into a simpler two-handed game?

Chess is a mimicry of war. It seems altogether unlikely that an image of struggle produced by primitive people would have started with a four-sided battle when two-sided wars were more frequent and natural.

Whatever the true story of chess, we can be thankful to the primitive inhabitants of India for a game, an art, a science, which continues to enthrall, and probably shall continue to enthrall, as long as man remains on Earth.



FAR WEST DIVISION REPORT



By Joe Brozovich

The Kingsmen have used up both of their privileges under Section II, Paragraph C of the rules, which states: "A team's privilege of starting games in the absence of a player (by starting his clock) will be withdrawn for the remainder of the season if two occurrences of such forfeits are reported." So, from now on, if any Kingsmen players are not present at the end of the grace period, the opposing team captain may request that the remaining players shift board assignments upwards with forfeit losses recorded on the bottom board(s).

Congratulations to the Amoco team, which broke its perfect record by drawing their last match with the Kingsmen. Amoco may surprise a few more teams before this year is over.

The new computerized round-by-round results show that some teams are violating the 100-point rule (Section II, Paragraph D of the rules states "No player with an established CICL rating shall be ranked below any other player with an established rating more than 100 points lower than his..."). If a team captain sees this happening, he may request the opposing team captain to realign the board assignments so as to adhere to the rules.

Please send all future correspondence to my new address:

J. M. Brozovich
Room 1Y-425
Bell Telephone Laboratories
1100 East Warrenville Road
Naperville, IL 60566
Phone: 462-7316



NORTH DIVISION REPORT




By Jim Brotsos

Nik Goncharoff of Motorola has been relocated to the Schaumburg complex; his new phone number is 576-7138.


With the sudden loss of two matches in a row (to the powerful Teletype Knights and to surprising Kemper), Motorola, a perennial favorite in the North, has dropped to fourth place and has opened the way for Kemper to clinch a playoff spot.

The upset of the period was the loss to Teletype II by the Excaliburs, 3-2. The match was an oddity in that a double forfeit occurred on the 6th board.

As this report is submitted, Apex Toolworks and Kitchens of Sara Lee are on the verge of playing a crucial match to determine who will occupy the cellar spot in the division. Art Oelhafen of Apex has suggested that a playoff be instituted for tail-enders. The two bottom teams in each division would play each other in the same format and at the same time as the championship contenders. Art indicated that he would present this proposal at the next CICL business meeting. One could argue that the bottom teams are in greater need of the extra practice. Any ideas for a grand prize for the winner and/or tail-ender in this event?!



MOST IMPROVED PLAYERS



| | | |
|--------------|-------|-----|
| HOSKINS, E | SIGND | 112 |
| GERNES, L | TTY2 | 105 |
| WILKINSON, D | FERMI | 91 |
| THOMAS, J | GAMBT | 90 |
| SPLAVER, H | PLYRS | 87 |
| LI, T | ROYLS | 84 |
| FEDER, H | PAWNS | 78 |
| THOMAS, G | PLYRS | 71 |
| BHOJWANI, C | ROYLS | 69 |
| PEEL, A | IHARV | 67 |
| SUE, H | TTY2 | 58 |



CICL TEAM STANDINGS



NEAR WEST DIVISION 21-Feb-81

| TEAM NAME | W | L | D | GAME POINTS | MATCH POINTS | PCT |
|-------------------|---|---|---|-------------|--------------|-------|
| WE CHARGERS | 5 | 1 | 0 | 27.0 | 5.0 | 0.833 |
| BTL PLAYERS | 4 | 1 | 1 | 21.0 | 4.5 | 0.750 |
| INT'L HARVESTER | 3 | 2 | 1 | 18.0 | 3.5 | 0.583 |
| ANL KNIGHTS | 3 | 3 | 0 | 22.0 | 3.0 | 0.500 |
| WE GAMBITEERS | 2 | 2 | 2 | 16.5 | 3.0 | 0.500 |
| WESCOM | 0 | 3 | 2 | 8.5 | 1.0 | 0.200 |
| CPC INTERNATIONAL | 0 | 5 | 0 | 7.0 | 0.0 | 0.000 |

NORTH DIVISION 21-Feb-81

| TEAM NAME | W | L | D | GAME POINTS | MATCH POINTS | PCT |
|----------------------|---|---|---|-------------|--------------|-------|
| TELETYPE KNIGHTS | 8 | 0 | 0 | 39.0 | 8.0 | 1.000 |
| EXCALIBERS | 6 | 1 | 0 | 30.0 | 6.0 | 0.857 |
| KEMPER INSURANCE | 5 | 1 | 0 | 23.5 | 5.0 | 0.833 |
| MOTOROLA | 5 | 2 | 0 | 28.5 | 5.0 | 0.714 |
| PROCON/UOP | 2 | 3 | 1 | 17.5 | 2.5 | 0.417 |
| TELETYPE #2 | 2 | 3 | 1 | 16.0 | 2.5 | 0.417 |
| SIGNODE | 2 | 3 | 1 | 15.0 | 2.5 | 0.417 |
| ZENITH-GLENVIEW | 2 | 4 | 1 | 15.0 | 2.5 | 0.357 |
| FEL-PRO | 2 | 4 | 0 | 12.5 | 2.0 | 0.333 |
| KITCHENS OF SARA LEE | 0 | 7 | 0 | 13.0 | 0.0 | 0.000 |
| APEX TOOL WORKS | 0 | 6 | 0 | 5.0 | 0.0 | 0.000 |

FAR WEST DIVISION 21-Feb-81

| TEAM NAME | W | L | D | GAME POINTS | MATCH POINTS | PCT |
|-----------------|---|---|---|-------------|--------------|-------|
| ANL ROOKS | 6 | 1 | 1 | 33.0 | 6.5 | 0.813 |
| BTL ROYALS | 6 | 1 | 1 | 31.0 | 6.5 | 0.813 |
| ANL PAWNS | 6 | 1 | 0 | 29.5 | 6.0 | 0.857 |
| WHEATON COLLEGE | 3 | 4 | 0 | 19.0 | 3.0 | 0.429 |
| WE KINGSMEN | 1 | 5 | 2 | 18.0 | 2.0 | 0.250 |
| FERMILABS | 1 | 5 | 1 | 16.0 | 1.5 | 0.214 |
| AMOCO | 0 | 6 | 1 | 9.5 | 0.5 | 0.071 |

EAST DIVISION 21-Feb-81

| TEAM NAME | W | L | D | GAME POINTS | MATCH POINTS | PCT |
|----------------------|---|---|---|-------------|--------------|-------|
| SEARS | 2 | 0 | 1 | 14.5 | 2.5 | 0.833 |
| ALUMNI CENTRAL | 1 | 0 | 1 | 8.0 | 1.5 | 0.750 |
| HARZA ENGINEERING | 1 | 2 | 0 | 9.0 | 1.0 | 0.333 |
| STANDARD OIL COMPANY | 1 | 2 | 0 | 6.0 | 1.0 | 0.333 |
| FIRST NATIONAL BANK | 1 | 2 | 0 | 3.5 | 1.0 | 0.333 |



DIVISION TOP TEN



- EAST DIVISION TOP TEN

| | | |
|--------------|-------|-------|
| REYES, R | SEARS | 2312 |
| CZERNIECKI | ALUMN | 2122 |
| LATIMER, E | SEARS | 1962 |
| NURME, U | HARZ1 | 1933* |
| GIBBS | FBNBK | 1921 |
| ANDRESEN, T | SEARS | 1883 |
| GOLLA, R | SEARS | 1842 |
| DUNWORTH, J | ALUMN | 1825 |
| FABIJONAS, R | ALUMN | 1825C |
| FEILER, K | FBNBK | 1797 |

FAR WEST DIVISION TOP TEN

| | | |
|----------------|-------|-------|
| STREETS, D | PAWNS | 2110 |
| JAKSTAS, K | ROYLS | 2038 |
| MIHAILOVICH, S | PAWNS | 1903C |
| JACKSON, J | ROOKS | 1900C |
| WILKINSON, D | FERMI | 1884* |
| BERRY, G | ROOKS | 1879C |
| PARKER, L | KNGMN | 1877 |
| LEONARD, T | CRSDR | 1802* |
| WALHOUT, M | CRSDR | 1800 |
| HOPPNER, P | ROYLS | 1767 |

NORTH DIVISION TOP TEN

| | | |
|-------------|-------|-------|
| HUERGER, E | EXCAL | 2170 |
| TEGEL, F | TTY | 2026C |
| WONG, P | EXCAL | 1980 |
| LEONG, G | KEMPR | 1919 |
| STYS, A | PRCON | 1870 |
| SULLIVAN, J | EXCAL | 1863C |
| JACOBS, N | TTY | 1858 |
| SCHULMAN, R | ZENTH | 1818 |
| ANDERSON, N | SARAL | 1808 |
| KOZACKY, J | PRCON | 1800 |

NEAR WEST DIVISION TOP TEN

| | | |
|-------------|-------|-------|
| BENEDEK, R | KNGHT | 2128 |
| WARREN, J | CHRGR | 2026C |
| SPLAVER, H | PLYRS | 1948 |
| MARCOWKA, R | CHRGR | 1868 |
| YOUNG, C | KNGHT | 1860 |
| PETERSON, M | KNGHT | 1783C |
| KUMRO, D | CHRGR | 1736C |
| GRAFT, D | WESCM | 1725 |
| KUBAL, C | GAMBT | 1704* |
| DOBR, K | CHRGR | 1701C |



MATCH RESULTS



AR WEST DIVISION

| 19-JAN-81 | | WE CHARGERS | | 5 | | WE GAMBITEERS | | 1 | |
|-----------|---------------|-------------|-------|---------|-------------|---------------|-------|---------|-------|
| ROUND 6 | BD | RATINGS | SCORE | RATINGS | SCORE | RATINGS | SCORE | RATINGS | SCORE |
| 1 | WARREN, J | 2023 | 3 | 1 | STAMM, V | 1610 | -3 | 0 | |
| 2 | MARCOWKA, R | 1856 | 12 | 1 | KUBAL, C | 1685 | -12 | 0 | |
| 3 | KUMRO, D | 1727 | 9 | 1 | ALOJADO, M | 1592 | -14 | 0 | |
| 4 | DOBR, K | 1726 | -25 | 0 | THOMAS, J | 1429 | 38 | 1 | |
| 5 | RADAVICIUS, E | 1610 | 0 | 1 | PRESCOTT, F | 0000 | 0 | 0 | |
| 6 | DISSEN, B | 0000 | 0 | 1 | STOCK, R | 1247 | 0 | 0 | |
| 7 | SWIDERSKI, M | 1435 | 0 | 1 | LEE, REGGIE | 0000 | 0 | 0 | |
| 8 | WETTERSTEN, H | | 0 | 1F | FORFIET | | 0 | 0F | |

| 20-JAN-81 | | CPC INTERNATIONAL | | 2.5 | | INT'L HARVESTER | | 3.5 | |
|-----------|---------------|-------------------|-------|---------|--------------|-----------------|-------|---------|-------|
| ROUND 6 | BD | RATINGS | SCORE | RATINGS | SCORE | RATINGS | SCORE | RATINGS | SCORE |
| 1 | PARMETER, S | 1604 | 27 | 1 | PETERSON, W | 1672 | -27 | 0 | |
| 2 | ARMERUSTER, F | 1506 | -15 | 0 | SATTERLEE, D | 1633 | 15 | 1 | |
| 3 | BYAS, E | 1357 | -27 | 0 | KANAS, W | 1284 | 27 | 1 | |
| 4 | WALKER, B | 0000 | 0 | .5 | MOTYCKA, R | 1244 | 0 | .5 | |
| 5 | STEJSKAL, J | 1281 | 19 | 1 | RAVANAM, S | 1220 | -19 | 0 | |
| 6 | MUDDE, J | 1227 | 0 | 0 | HARTMAN, G | 0000 | 0 | 1 | |

| 22-JAN-81 | | WESCOM | | 0 | | ANL KNIGHTS | | 6 | |
|-----------|--------------|---------|-------|---------|-------------|-------------|-------|---------|-------|
| ROUND 6 | BD | RATINGS | SCORE | RATINGS | SCORE | RATINGS | SCORE | RATINGS | SCORE |
| 1 | GRAFT, D | 1729 | -4 | 0 | BENEDEK, R | 2124 | 4 | 1 | |
| 2 | SCHORR, I | 0000 | 0 | 0 | PETERSON, M | 1803 | 0 | 1 | |
| 3 | RILEY, J | 0000 | 0 | 0 | KELLOGG, K | 1612 | 0 | 1 | |
| 4 | DAWSON, T | 0000 | 0 | 0 | DEVER, D | 1554 | 0 | 1 | |
| 5 | SINDEWALD, G | 0000 | 0 | 0 | KINSELLA, G | 1411 | 0 | 1 | |
| 6 | STELTON, N | 0000 | 0 | 0 | COOVER, K | 1390 | 0 | 1 | |

| 03-FEB-81 | | INT'L HARVESTER | | 4 | | BTL PLAYERS | | 2 | |
|-----------|--------------|-----------------|-------|---------|-------------|-------------|-------|---------|-------|
| ROUND 7 | BD | RATINGS | SCORE | RATINGS | SCORE | RATINGS | SCORE | RATINGS | SCORE |
| 1 | PETERSON, W | 1645 | -7 | 0 | SPLAVER, H | 1941 | 7 | 1 | |
| 2 | PEEL, A | 1644 | 25 | 1 | SAMELSON, C | 1683 | -25 | 0 | |
| 3 | SATTERLEE, D | 1648 | 21 | 1 | WARD, C | 1622 | -14 | 0 | |
| 4 | KANAS, W | 1311 | -20 | 0 | THOMAS, G | 1350 | 20 | 1 | |
| 5 | HARTMAN, G | 0000 | 0 | 1 | DYER, G | 0000 | 0 | 0 | |
| 6 | MOTYCKA, R | 1244 | 29 | 1 | DEWITT, G | 1350 | -29 | 0 | |
| 7 | GESIOR, A | 1065 | 0 | 0 | MADISON | 0000 | 0 | 1 | |
| 8 | OWENS | 0000 | 0 | 0 | DEAK, T | 1469 | 0 | 1 | |

| 12-FEB-81 | | ANL KNIGHTS | | 2.5 | | WE GAMBITEERS | | 3.5 | |
|-----------|-------------|----------------|-------|---------|-------------|---------------|-------|---------|----------|
| ROUND 7 | BD | RATINGS | SCORE | RATINGS | SCORE | RATINGS | SCORE | RATINGS | SCORE |
| 1 | YOUNG, C | 1851 | 9 | 1 | STAMM, V | 1607 | -6 | 0 | |
| 2 | PETERSON, M | 1803 | -20 | 0 | KUBAL, C | 1673 | 31 | 1 | |
| 3 | KELLOGG, K | 1612 | -27 | 0 | KIMBLER, C | 1543 | 27 | 1 | |
| 4 | DEVER, D | 1554 | 2 | .5 | ALOJADO, M | 1578 | -2 | .5 | |
| 5 | COOVER, K | 1390 | -18 | 0 | THOMAS, J | 1467 | 18 | 1 | |
| 6 | KINSELLA, G | 1411 | 0 | 1 | LEE, REGGIE | 0000 | 0 | 0 | |
| (GAMBT) | 7 | STOCK, R | 1247 | 0 | .5 | ALBRECHT, R | 0000 | 0 | .5 |
| (GAMBT) | 8 | BLAUMUELLER, F | 0000 | 0 | 0 | DOBR, K | 1701 | 0 | 1 (CHGR) |

FAR WEST DIVISION

| 15-JAN-81 | | AMOCO | 3 | | WE KINGSMEN | 3 | |
|-----------|----|-------------|---------|-------|--------------|---------|-------|
| ROUND 7 | BD | | RATINGS | SCORE | | RATINGS | SCORE |
| 1 | | MUIR, L | 1624-22 | 0 | BLAZIE, J | 1636 | 22 1 |
| 2 | | LEE, RJ | 1640-20 | 0 | BROZOVICH, J | 1673 | 20 1 |
| 3 | | DEE, M | 1513-18 | 0 | HARRINGER, R | 1579 | 18 1 |
| 4 | | SPANGLER, M | 0 | 1F | SMITH, BR | 0 | 0F |
| 5 | | LEE, J | 0000 | 0 | SHAFF, R | 1477 | 0 0 |
| 6 | | DZADZIC, P | 1509 | 0 1 | MCAHEL, K | 0000 | 0 0 |

| 15-JAN-81 | | FERMILABS | 2 | | ANL ROOKS | 4 | |
|-----------|----|--------------|---------|-------|------------|---------|-------|
| ROUND 7 | BD | | RATINGS | SCORE | | RATINGS | SCORE |
| 1 | | WILKINSON, D | 1846 | 26 1 | JACKSON, J | 1907-18 | 0 |
| 2 | | GAINES, I | 1740 | 22 1 | WILSON, R | 1730-15 | 0 |
| 3 | | FISCHLER, M | 1437-11 | 0 | BAURAC, D | 1642 | 11 1 |
| 4 | | LASSILA, K | 0000 | 0 0 | ALFARO, C | 0000 | 0 1 |
| 5 | | WALKER, R | 1382-16 | 0 | DECMAN, S | 1489 | 16 1 |
| 6 | | CISKO, C | 0000 | 0 0 | SHIRKEY, L | 1559 | 0 1 |

| 21-JAN-81 | | ANL PAWNS | 4 | | BTL ROYALS | 2 | |
|-----------|----|----------------|---------|-------|-------------|---------|-------|
| ROUND 7 | BD | | RATINGS | SCORE | | RATINGS | SCORE |
| 1 | | STREETS, D | 2107 | 21 1 | JAKSTAS, K | 2082-21 | 0 |
| 2 | | MIHAILOVICH, S | 1898 | -7 .5 | HOPPNER, P | 1712 | 12 .5 |
| 3 | | GREEN, D | 1674-20 | 0 | BHOJWANI, C | 1713 | 20 1 |
| 4 | | HOLM, B | 0000 | 0 .5 | ANDERSON, D | 1672 | 0 .5 |
| 5 | | FEDER, H | 1394 | 24 1 | WESTON, P | 1420-24 | 0 |
| 6 | | DALEY, J | 1364 | 0 1 | DETMERS, J | 0000 | 0 0 |

| 27-JAN-81 | | ANL PAWNS | 4 | | WHEATON COLLEGE | 2 | |
|-----------|----|----------------|---------|-------|-----------------|---------|-------|
| ROUND 8 | BD | | RATINGS | SCORE | | RATINGS | SCORE |
| 1 | | STREETS, D | 2128-18 | .5 | LEONARD, T | 1784 | 18 .5 |
| 2 | | MIHAILOVICH, S | 1891 | 12 1 | WALHOUT, M | 1818-18 | 0 |
| 3 | | GREEN, D | 1654 | 15 1 | UNDERWOOD, H | 1535-15 | 0 |
| 4 | | RENNER, T | 1637-35 | 0 | LUBENEC, S | 1411 | 35 1 |
| 5 | | WALSH, W | 1517 | 0 .5 | PAESE, M | 0000 | 0 .5 |
| 6 | | FEDER, H | 1418 | 23 1 | CONGDON, B | 1425-23 | 0 |

| 29-JAN-81 | | AMOCO | 0 | | ANL ROOKS | 6 | |
|-----------|----|-------------|---------|-------|------------|---------|-------|
| ROUND 8 | BD | | RATINGS | SCORE | | RATINGS | SCORE |
| 1 | | MUIR, L | 1602 | -7 0 | JACKSON, J | 1889 | 5 1 |
| 2 | | LEE, RJ | 1620 | -9 0 | BERRY, G | 1865 | 6 1 |
| 3 | | DEE, M | 1495-10 | 0 | WILSON, R | 1715 | 7 1 |
| 4 | | SPANGLER, M | 1474 | 0 0 | ALFARO, C | 0000 | 0 1 |
| 5 | | LEE, J | 0000 | 0 0 | SHIRKEY, L | 1559 | 0 1 |
| 6 | | CATTRON, W | 0000 | 0 0 | WIENCEK, T | 0000 | 0 1 |

| | | | | | | |
|-----------|--------------|---------|-------|-------------|---------|-----|
| 29-JAN-81 | FERMILABS | | 1.5 | BTL ROYALS | | 4.5 |
| ROUND 8 | BD | RATINGS | SCORE | RATINGS | SCORE | |
| 1 | WILKINSON, D | 1872 | 12 .5 | JAKSTAS, K | 2061-12 | .5 |
| 2 | GAINES, I | 1762-25 | 0 | HOPPNER, P | 1724 25 | 1 |
| 3 | FISCHLER, M | 1426 -9 | 0 | ANDERSON, D | 1672 9 | 1 |
| 4 | LASSILA, K | 0000 0 | 0 | LI, T | 1313 0 | 1 |
| 5 | WALKER, R | 1366-16 | 0 | PFEFFER, D | 1476 16 | 1 |
| 6 | GROSS, D | 0000 0 | 1 | WESTON, P | 1396 0 | 0 |

| | | | | | | |
|-----------|------------|---------|-------|--------------|---------|-----|
| 04-FEB-81 | ANL ROOKS | | 4.5 | WE KINGSMEN | | 1.5 |
| ROUND 9 | BD | RATINGS | SCORE | RATINGS | SCORE | |
| 1 | JACKSON, J | 1894 6 | 1 | BLAZIE, J | 1658 -9 | 0 |
| 2 | BERRY, G | 1871 8 | 1 | BROZOVICH, J | 1693-12 | 0 |
| 3 | ALFARO, C | 0000 0 | .5 | ELLIOTT, W | 1718 0 | .5 |
| 4 | WILSON, R | 1722 -6 | .5 | SMITH, BR | 1564 10 | .5 |
| 5 | BAURAC, D | 1653 -4 | .5 | HARRINGER, R | 1597 4 | .5 |
| 6 | DECMAN, S | 1505 27 | 1 | SOBUN, J | 1572-27 | 0 |
| (KNGHT) 7 | COOVER, K | 1372-16 | 0 | SHAFF, R | 1477 16 | 1 |

| | | | | | | |
|-----------|--------------|---------|-------|-------------|---------|-----|
| 19-FEB-81 | WE KINGSMEN | | 1.5 | BTL ROYALS | | 4.5 |
| ROUND 10 | BD | RATINGS | SCORE | RATINGS | SCORE | |
| 1 | PARKER, L | 1866 11 | .5 | JAKSTAS, K | 2049-11 | .5 |
| 2 | BROZOVICH, J | 1681-18 | 0 | HOPPNER, P | 1749 18 | 1 |
| 3 | BLAZIE, J | 1649-17 | 0 | BHOJWANI, C | 1733 17 | 1 |
| 4 | ROSEN, J | 1564 30 | 1 | ANDERSON, D | 1681-30 | 0 |
| 5 | SMITH, BR | 1574-37 | 0 | LI, T | 1313 37 | 1 |
| 6 | MCAHEL, K | 0000 0 | 0 | WESTON, P | 1396 0 | 1 |

NORTH DIVISION

| | | | | | | |
|-----------|---------------|---------|-------|--------------|---------|-----|
| 12-NOV-80 | FEL-PRO | | 1.5 | TELETYPE #2 | | 4.5 |
| ROUND 4 | BD | RATINGS | SCORE | RATINGS | SCORE | |
| 1 | MONZANI, A | 1648 14 | 1 | SUE, H | 1518-14 | 0 |
| 2 | FELDMAN, A | 1545-26 | 0 | KLEMM, J | 1498 26 | 1 |
| 3 | SHAPIRO, M | 0000 0 | 0 | ERICKSON, D | 0000 0 | 1 |
| 4 | FERNANDEZ, J | 1453-30 | 0 | GERNES, L | 1332 30 | 1 |
| 5 | POKATILOFF, W | 1394 0 | .5 | CARPENTER, P | 0000 0 | .5 |
| 6 | ELIKAN, F | 0000 0 | 0 | DALKA, C | 906 0 | 1 |

| | | | | | | |
|-----------|-----------------|---------|-------|------------------|--------|-----------|
| 11-DEC-80 | APEX TOOL WORKS | | 0 | KEMPER INSURANCE | | 6 |
| ROUND 5 | BD | RATINGS | SCORE | RATINGS | SCORE | |
| 1 | OELHAFEN, A | 0000 0 | 0 | LEONG, G | 1938 0 | 1 |
| 2 | WHITTENHALL, T | 0000 0 | 0 | SKUJINS, P | 1593 0 | 1 |
| 3 | O'DELL, D | 0000 0 | 0 | HUGHES, N | 1498 0 | 1 |
| 4 | WHITTENHALL; JR | 0000 0 | 0 | JOHNSTON, D | 1358 0 | 1 |
| 5 | RACUTT, E | 0000 0 | 0 | MUNKACSY | 0000 0 | 1 |
| 6 | DIBERARDINO, D | 0000 0 | 0 | CUMMUTA, P | 1124 0 | 1 |
| 7 | WHITTENHALL; SR | 0000 0 | 0 | KARGE, W | 1211 0 | 1 |
| 8 | BOWERS, A | 0000 0 | 1 | ABE, P | 0000 0 | 0 (APEX) |

| | | | | | |
|-----------|------------------|-------------|---------|----------------|------------|
| 17-DEC-80 | TELETYPE KNIGHTS | 5 | FEL-PRO | 1 | |
| ROUND 6 | BD | RATINGS | SCORE | RATINGS SCORE | |
| | 1 | TEGEL, F | 2022 3 | 1 MONZANI, A | 1662 -5 0 |
| | 2 | JACOBS, N | 1860 3 | 1 FERNANDEZ, J | 1423 -3 0 |
| | 3 | WAGNER, R | 1704-12 | .5 FELDMAN, A | 1519 12 .5 |
| | 4 | DURKEE, D | 1737 4 | 1 WEITZ, R | 1345 -4 0 |
| | 5 | ZUERCHER, J | 1376 0 | .5 ERICKSEN, K | 0000 0 .5 |
| | 6 | VOGEL, T | 0000 0 | 1 THOMPSON, R | 1217 0 0 |
| (TTY2) | 7 | SUE, H | 1504 2 | 1 KASPER, J | 974 -2 0 |

| | | | | | |
|-----------|------------------|------------|----------------------|---------------|-----------|
| 06-JAN-81 | KEMPER INSURANCE | 3.5 | KITCHENS OF SARA LEE | 2.5 | |
| ROUND 6 | BD | RATINGS | SCORE | RATINGS SCORE | |
| | 1 | LEONG, G | 1938-33 | 0 ANDERSON, N | 1762 33 1 |
| | 2 | BARBER, H | 1460-16 | 0 SIVULA, B | 1565 16 1 |
| | 3 | SKUJINS, P | 1593 0 | .5 CHAN, P | 0000 0 .5 |
| | 4 | HUGHES, N | 1498 15 | 1 SZATMARY, F | 1370-15 0 |
| | 5 | CUMMUTA, P | 1124 37 | 1 HANSON, D | 1399-37 0 |
| | 6 | BLOEDOW, P | 1435 20 | 1 TATRO, B | 1394-20 0 |

| | | | | | |
|-----------|-----------------|-----------------|------------|---------------|----------|
| 08-JAN-81 | APEX TOOL WORKS | 2 | EXCALIBERS | 4 | |
| ROUND 7 | BD | RATINGS | SCORE | RATINGS SCORE | |
| | 1 | OELHAFEN, A | 0 | 1F BUERGER, E | 0 0F |
| | 2 | WHITTENHALL, T | 0000 0 | 0 SULLIVAN, J | 1863 0 1 |
| | 3 | O'DELL, D | 0000 0 | 1 BROTSOS, J | 1614 0 0 |
| | 4 | WHITTENHALL; JR | 0000 0 | 0 GREEN, H | 1550 0 1 |
| | 5 | RACUTT, E | 0000 0 | 0 VOLPE, M | 1320 0 1 |
| | 6 | RUNYARD, R | 0000 0 | 0 AMPULSKI, J | 980 0 1 |
| | 7 | WHITTENHALL; SR | 0 | 1F FORFIET | 0 0F |

| | | | | | |
|-----------|-----------------|-------------|---------|-----------------|-----------|
| 13-JAN-81 | ZENITH-GLENVIEW | 2 | SIGNODE | 4 | |
| ROUND 7 | BD | RATINGS | SCORE | RATINGS SCORE | |
| | 1 | SCHULMAN, R | 1813 5 | 1 STENSAKER, L | 1539 -8 0 |
| | 2 | NINKOVIC, S | 1497-31 | 0 HUFF, S | 1361 31 1 |
| | 3 | SKULSKI, I | 0000 0 | 0 PASTURCZAK, R | 0000 0 1 |
| | 4 | CONWAY, F | 1404 22 | 1 KLEIN, A | 1401-22 0 |
| | 5 | WEIGAND, J | 1335-27 | 0 HOSKINS, E | 1260 27 1 |
| | 6 | SKINNER, S | 1132 0 | 0 RIBALDO, D | 0000 0 1 |
| | 7 | FORFIET | 0 | 0F LESNER, K | 0 1F |

| | | | | | |
|-----------|------------------|--------------|----------|-----------------|-----------------|
| 15-JAN-81 | TELETYPE KNIGHTS | 3.5 | MOTOROLA | 2.5 | |
| ROUND 7 | BD | RATINGS | SCORE | RATINGS SCORE | |
| | 1 | TEGEL, F | 2025 6 | 1 GONCHAROFF, N | 1781 -6 0 |
| | 2 | JACOBS, N | 1863 -8 | .5 NEUMARK, J | 1736 5 .5 |
| | 3 | WAGNER, R | 1692-29 | 0 HENNING, J | 1587 19 1 |
| | 4 | DURKEE, D | 1741 16 | 1 OGASAWARA, R | 1631-10 0 |
| | 5 | CHRISTIAN, R | 1623 0 | 0 BLAZEVIK, CH | 0000 0 1 |
| | 6 | CARUS, B | 1537 21 | 1 VICK, H | 1518-21 0 |
| | 7 | MONSER, E | 0000 0 | 1 JOELSON, A | 0000 0 0 |
| | 8 | MANZKE, R | 0000 0 | 0 BIESZKI, B | 0000 0 1 |
| (TTY2) | 9 | GERNES, L | 1362 0 | 1 TOLSON, M | 0000 0 0 |
| | 10 | MANZKE, R | 0000 0 | 0 SUE, H | 1506 0 1 (TTY2) |

| | | | | | |
|-----------|----------------------|---------|------------|---------------|-----------|
| 20-JAN-81 | KITCHENS OF SARA LEE | 1.5 | PROCON/UOP | 4.5 | |
| ROUND 7 | BD | RATINGS | SCORE | RATINGS SCORE | |
| 1 | ANDERSON, N | 1795 13 | 1 | BRIONES, M | 1639-13 0 |
| 2 | CHAN, P | 0000 0 | 0 | MICHLICH, F | 0000 0 1 |
| 3 | SIVULA, B | 1581 0 | .5 | DORFMAN, L | 0000 0 .5 |
| 4 | HANSON, D | 1362-17 | 0 | DMYTRENKO, S | 1446 17 1 |
| 5 | SZATMARY, F | 1355-20 | 0 | STUHLBARG, D | 1389 20 1 |
| 6 | FORFIET | 0 | 0F | ANSARI, N | 0 1F |

| | | | | | |
|-----------|---------------|---------|------------------|---------------|----------------|
| 29-JAN-81 | PROCON/UOP | 1 | TELETYPE KNIGHTS | 5 | |
| ROUND 9 | BD | RATINGS | SCORE | RATINGS SCORE | |
| 1 | STYS, A | 1859 11 | .5 | TEGEL, F | 2031 -7 .5 |
| 2 | MICHLICH, F | 0000 0 | .5 | JACOBS, N | 1855 0 .5 |
| 3 | BRIONES, M | 1626-14 | 0 | DURKEE, D | 1757 14 1 |
| 4 | DMYTRENKO, S | 1463-11 | 0 | WAGNER, R | 1663 11 1 |
| 5 | STUHLBARG, D | 1409-10 | 0 | CHRISTIAN, R | 1623 10 1 |
| 6 | CHEVERESAN, S | 1316 -9 | 0 | CARUS, B | 1558 9 1 |
| 7 | O'BRIEN, D | 0000 0 | 1 | MANZKE, B | 0000 0 0 |
| 8 | KROL, K | 0000 0 | 0 | DALKA, C | 906 0 1 (TTY2) |

| | | | | | |
|-----------|---------------|---------|------------------|---------------|----------|
| 10-FEB-81 | SIGNODE | 0 | TELETYPE KNIGHTS | 6 | |
| ROUND 8 | BD | RATINGS | SCORE | RATINGS SCORE | |
| 1 | STENSAKER, L | 1531 -2 | 0 | TEGEL, F | 2024 2 1 |
| 2 | HUFF, S | 1392 -3 | 0 | JACOBS, N | 1855 3 1 |
| 3 | PASTURCZAK, R | 0000 0 | 0 | DURKEE, D | 1771 0 1 |
| 4 | HOSKINS, E | 1287 -4 | 0 | WAGNER, R | 1674 4 1 |
| 5 | HUPKA, S | 0000 0 | 0 | CHRISTIAN, R | 1633 0 1 |
| 6 | RIBALDO, D | 0000 0 | 0 | CARUS, B | 1567 0 1 |
| 7 | LESNER, K | 0000 0 | 1 | MANZKE, B | 0000 0 0 |

| | | | | | |
|-----------|-------------|---------|------------|---------------|-----------|
| 11-FEB-81 | TELETYPE #2 | 3 | EXCALIBERS | 2 | |
| ROUND 8 | BD | RATINGS | SCORE | RATINGS SCORE | |
| 1 | SUE, H | 1506 -1 | 0 | BUERGER, E | 2169 1 1 |
| 2 | KLEMM, J | 1524 43 | 1 | WONG, P | 2023-43 0 |
| 3 | GERNES, L | 1362 42 | 1 | KARLOVICS, S | 1841-42 0 |
| 4 | ERICSON, D | 1314 38 | 1 | BROTSOS, J | 1614-25 0 |
| 5 | DALKA, C | 906 -2 | 0 | BYCKOWSKI, M | 1465 2 1 |
| 6 | FORFIET | 0 | 0F | FORFEIT | 0 0F |

| | | | | | |
|-----------|------------------|---------|----------|---------------|------------|
| 12-FEB-81 | KEMPER INSURANCE | 3.5 | MOTOROLA | 2.5 | |
| ROUND 8 | BD | RATINGS | SCORE | RATINGS SCORE | |
| 1 | LEONG, G | 1905 14 | 1 | GONCHAROFF, N | 1775-10 0 |
| 2 | MUENCH, D | 0000 0 | 0 | NEUMARK, J | 1741 0 1 |
| 3 | SKUJINS, P | 1593-19 | 0 | GREENSPAN, P | 1642 13 1 |
| 4 | BARBER, H | 1444 33 | 1 | OGASAWARA, R | 1621-22 0 |
| 5 | JOHNSTON, D | 1358 36 | 1 | HENNING, J | 1606-24 0 |
| 6 | HUGHES, N | 1513 6 | .5 | SUERTH, F | 1602 -6 .5 |
| 7 | CUMMTA, P | 0000 0 | 0 | TOLSON, M | 1145 0 1 |
| 8 | BLOEDOW, P | 1435 0 | .5 | HEFFERNON, D | 0000 0 .5 |
| 9 | KARGE, W | 0 | 0F | BIESZKI, B | 0 1F |
| 10 | THURESON, G | 0000 0 | 0 | FOERSTER, G | 0000 0 1 |



RATINGS



| NAME | TEAM | W | L | D | RATING |
|----------------|--------|---|---|---|--------|
| ABE, P | APEX | 0 | 3 | 0 | 0000? |
| ABEL, W | PRCON | 0 | 0 | 1 | 0000? |
| AGEE, L | STAND | 2 | 1 | 0 | 0000? |
| AGPAWA, T | ZENTH | 1 | 1 | 1 | 1620 |
| ALBRECHT, R | GAMBT | 2 | 0 | 1 | 0000? |
| ALFARO, C | ROOKS | 2 | 0 | 1 | 0000? |
| ALLEN, T | APEX | 1 | 0 | 0 | 0000? |
| ALOJADO, M | GAMBT | 2 | 2 | 2 | 1576 |
| AMPULSKI, J | EXCAL | 2 | 1 | 0 | 980* |
| ANDERSON, C | PLYRS | 1 | 1 | 1 | 1540* |
| ANDERSON, D | ROYLS | 5 | 1 | 2 | 1651 |
| ANDERSON, N | SARAL | 3 | 3 | 0 | 1808 |
| ANDRESEN, T | SEARS | 2 | 0 | 0 | 1883 |
| ANSARI, N | PRCON | 0 | 2 | 0 | 1542* |
| APPELMAN, E | KNIGHT | 0 | 1 | 0 | 1623 |
| ARMBRUSTER, F | CPCIL | 2 | 2 | 0 | 1491* |
| ATKINSON, J | FNBK | 0 | 1 | 0 | 0000? |
| BALASE, E | SEARS | 1 | 0 | 0 | 1435* |
| BARBER, H | KEMPR | 2 | 3 | 0 | 1477* |
| BARRETT, B | MTRLA | 1 | 0 | 0 | 0000? |
| BAUMANN, W | PRCON | 0 | 1 | 0 | 0000? |
| BAURAC, D | ROOKS | 4 | 1 | 2 | 1649 |
| BENEDEK, R | KNIGHT | 3 | 1 | 1 | 2128 |
| BERRY, G | ROOKS | 5 | 1 | 1 | 1879C |
| BHOJWANI, C | ROYLS | 5 | 1 | 1 | 1750 |
| BIESZKI, B | MTRLA | 2 | 0 | 0 | 0000? |
| BINGLE, J | PAWNS | 1 | 1 | 1 | 1568C |
| BLAUMUELLER, F | GAMBT | 1 | 2 | 0 | 0000? |
| BLAZEVIK, C | MTRLA | 2 | 0 | 0 | 1456* |
| BLAZEVIK, CH | MTRLA | 1 | 0 | 0 | 0000? |
| BLAZIE, J | KNGMN | 3 | 3 | 2 | 1632 |
| BLOEDOW, P | KEMPR | 1 | 1 | 1 | 1435* |
| BOWERS, A | APEX | 1 | 3 | 0 | 0000? |
| BRIONES, M | PRCON | 3 | 2 | 0 | 1612* |
| BROADUS, R | MTRLA | 0 | 1 | 0 | 0000? |
| BROSIG, A | SIGND | 2 | 0 | 0 | 1677 |
| BROTOS, J | EXCAL | 5 | 2 | 0 | 1589C |
| BROZUVICH, J | KNGMN | 2 | 5 | 1 | 1663 |
| BRUNER, B | CPCIL | 0 | 1 | 0 | 0000? |
| BUCHANAN, R | FNBK | 0 | 1 | 0 | 1556 |
| BUERGER, E | EXCAL | 6 | 0 | 0 | 2170 |
| BUJWID | HARZA | 2 | 0 | 1 | 1548* |
| BURBA, K | KNIGHT | 1 | 2 | 1 | 1397 |
| BYAS, E | CPCIL | 1 | 3 | 0 | 1330* |
| BYCKOWSKI, M | EXCAL | 2 | 1 | 0 | 1467 |
| CAMPBELL, C | STAND | 0 | 1 | 0 | 0000? |
| CARPENTER, P | TTY2 | 3 | 2 | 1 | 0000? |
| CARUS, B | TTY | 4 | 1 | 0 | 1567* |
| CATTRON, W | AMOCO | 0 | 1 | 1 | 0000? |
| CHAN, H | SEARS | 2 | 1 | 0 | 1722 |
| CHAN, P | SARAL | 1 | 2 | 2 | 0000? |

| | | | | | |
|---------------|--------|---|---|---|-------|
| CHEVERESAN, S | PRCON | 2 | 2 | 0 | 1307* |
| CHOO, Y | STAND | 1 | 0 | 1 | 0000? |
| CHRISTIAN, R | TTY | 2 | 1 | 0 | 1633* |
| CISKO, G | FERMI | 0 | 1 | 0 | 0000? |
| COMROE, R | MTRLA | 1 | 0 | 0 | 1279* |
| CONGDON, B | CRSDR | 0 | 2 | 0 | 1402* |
| CONWAY, F | ZENTH | 1 | 2 | 1 | 1426 |
| COOVER, K | KNIGHT | 2 | 4 | 1 | 1356 |
| COX, M | ALUMN | 1 | 0 | 0 | 1790* |
| CUMMTA, P | KEMPR | 0 | 1 | 0 | 0000? |
| CUMMUTA, P | KEMPR | 5 | 0 | 0 | 1161* |
| CZARMATA | PRCON | 0 | 1 | 0 | 0000? |
| CZERNIECKI | ALUMN | 1 | 1 | 0 | 2122 |
| DALEY, J | PAWNS | 1 | 1 | 0 | 1364 |

| NAME | TEAM | W | L | D | RATING |
|----------------|--------|---|---|---|--------|
| DALKA, C | TTY2 | 2 | 5 | 0 | 904* |
| DARGIS, R | ALUMN | 0 | 1 | 0 | 1564 |
| DAWSON, T | WESCM | 0 | 5 | 0 | 0000? |
| DEAK, T | PLYRS | 2 | 3 | 1 | 1469* |
| DECMAN, S | ROOKS | 5 | 1 | 1 | 1532 |
| DEE, M | AMOCO | 0 | 5 | 2 | 1485 |
| DELEON, J | MTRLA | 1 | 0 | 0 | 0000? |
| DETMERS, J | ROYLS | 1 | 1 | 0 | 0000? |
| DEVER, D | KNIGHT | 2 | 1 | 3 | 1556 |
| DEWITT, G | PLYRS | 2 | 2 | 0 | 1321 |
| DIBERARDINO, D | APEX | 1 | 4 | 0 | 1087* |
| DISSEN, B | CHRGR | 3 | 0 | 0 | 0000? |
| DMYTRENKO, S | PRCON | 1 | 5 | 0 | 1452 |
| DOBR, K | CHRGR | 4 | 2 | 0 | 1701C |
| DONOVAN, E | PRCON | 1 | 0 | 0 | 0000? |
| DORFMAN, L | PRCON | 1 | 0 | 1 | 0000? |
| DRAGEL, G | PAWNS | 1 | 1 | 1 | 1298 |
| DULAY | PRCON | 0 | 1 | 0 | 0000? |
| DUNWORTH, J | ALUMN | 1 | 1 | 0 | 1825 |
| DURKEE, D | TTY | 7 | 0 | 1 | 1771* |
| DYER, G | PLYRS | 4 | 1 | 0 | 0000? |
| DZADZIC, P | AMOCO | 1 | 1 | 2 | 1509* |
| DZIEDZIC | IHARV | 1 | 0 | 0 | 0000? |
| EDWARDS, S | EXCAL | 2 | 1 | 0 | 1253* |
| EHRlich, E | WESCM | 0 | 1 | 0 | 0000? |
| ELIKAN, F | FLPRO | 1 | 3 | 0 | 0000? |
| ELLIOTT, W | KNGMN | 0 | 0 | 1 | 1718C |
| ELSHEIMER, B | CRSDR | 3 | 2 | 0 | 0000? |
| ERICKSEN | FLPRO | 0 | 1 | 0 | 1131* |
| ERICKSEN, K | FLPRO | 0 | 0 | 1 | 0000? |
| ERICKSON, D | TTY2 | 1 | 0 | 0 | 0000? |
| ERICSON, D | TTY2 | 2 | 0 | 0 | 1352* |
| EVANS, V | SIGND | 2 | 2 | 0 | 1106* |
| EWARDS, B | FLPRO | 0 | 1 | 0 | 0000? |
| FABIJONAS, R | ALUMN | 2 | 0 | 0 | 1825C |
| FAJKUS, J | CHRGR | 3 | 1 | 0 | 1607C |
| FEDER, H | PAWNS | 3 | 0 | 0 | 1441 |
| FEILER, K | FNBK | 0 | 1 | 0 | 1797 |
| FELDMAN, A | FLPRO | 1 | 2 | 2 | 1531* |
| FERNANDEZ, J | FLPRO | 1 | 5 | 0 | 1420* |
| FIGIEL, J | SIGND | 0 | 1 | 0 | 0000? |

| | | | | | |
|---------------|-------|---|---|---|-------|
| FISCHLER, M | FERMI | 1 | 6 | 0 | 1417* |
| FOERSTER, G | MTRLA | 1 | 0 | 0 | 0000? |
| FOGELSON, M | ZENTH | 0 | 2 | 0 | 1293 |
| GAFFIGAN, T | FNBK | 0 | 2 | 1 | 1651 |
| GAINES, I | FERMI | 5 | 2 | 0 | 1737 |
| GALVIN, J | EXCAL | 0 | 1 | 0 | 1543 |
| GECZY, P | SIGND | 1 | 1 | 0 | 0000? |
| GERNES, L | TTY2 | 5 | 2 | 0 | 1404* |
| GESIOR, A | IHARV | 0 | 2 | 0 | 1065* |
| GIBBS | FNBK | 0 | 2 | 0 | 1921 |
| GILMER, J | TTY | 0 | 2 | 1 | 1448 |
| GLENN, S | FNBK | 1 | 0 | 0 | 0000? |
| GOLLA, R | SEARS | 0 | 1 | 1 | 1842 |
| GONCHAROFF, N | MTRLA | 2 | 4 | 1 | 1765C |
| GRAFT, D | WESCH | 2 | 2 | 1 | 1725 |
| GREEN, D | PAWNS | 4 | 1 | 2 | 1669 |
| GREEN, H | EXCAL | 2 | 2 | 0 | 1550 |
| GREENSPAN, P | MTRLA | 2 | 0 | 2 | 1655C |
| GROSS, D | FERMI | 1 | 1 | 0 | 0000? |
| HAN, A | CRSDR | 2 | 1 | 1 | 1506* |
| HANSON, D | SARAL | 2 | 3 | 1 | 1345* |
| HARRINGER, R | KNGMN | 2 | 1 | 1 | 1601 |
| HARTMAN, G | IHARV | 2 | 0 | 0 | 0000? |
| HEFFERNON, D | MTRLA | 1 | 0 | 1 | 0000? |

| NAME | TEAM | W | L | D | RATING |
|--------------|-------|---|---|---|--------|
| HENNING, J | MTRLA | 5 | 1 | 0 | 1582C |
| HILL, C | FERMI | 0 | 2 | 2 | 1683* |
| HOGENDORP, W | FNBK | 1 | 2 | 0 | 0000? |
| HOLLAND | PLYRS | 0 | 2 | 0 | 0000? |
| HOLM, B | PAWNS | 0 | 0 | 1 | 0000? |
| HOPNER, P | ROYLS | 2 | 3 | 3 | 1767 |
| HOSKINS, E | SIGND | 4 | 2 | 0 | 1283* |
| HOWANSKY, A | MTRLA | 1 | 0 | 0 | 0000? |
| HUFF, S | SIGND | 2 | 3 | 0 | 1389 |
| HUGHES, N | KEMPR | 2 | 0 | 1 | 1519* |
| HUPKA, S | SIGND | 0 | 1 | 0 | 0000? |
| JACKLIN | IHARV | 1 | 1 | 0 | 1189* |
| JACKSON, J | ROOKS | 3 | 4 | 1 | 1900C |
| JACOBS, N | TTY | 5 | 0 | 3 | 1858 |
| JAKSTAS, K | ROYLS | 4 | 1 | 3 | 2038 |
| JOELSON, A | MTRLA | 1 | 2 | 0 | 0000? |
| JOHNSTON, D | KEMPR | 4 | 0 | 1 | 1394* |
| KANAS, W | IHARV | 2 | 3 | 0 | 1291* |
| KARGE, W | KEMPR | 1 | 0 | 0 | 1211* |
| KARLOVICS, S | EXCAL | 4 | 2 | 0 | 1799 |
| KARLSSON, T | ZENTH | 1 | 1 | 0 | 1123* |
| KARUS, B | TTY | 1 | 0 | 0 | 0000? |
| KASPER, J | FLPRO | 0 | 3 | 0 | 972* |
| KELLOGG, K | KNGHT | 3 | 3 | 0 | 1585 |
| KIMBLER, C | GAMBT | 2 | 1 | 0 | 1570 |
| KINSELLA, G | KNGHT | 2 | 0 | 0 | 1411 |
| KLEIN, A | SIGND | 0 | 2 | 0 | 1379 |
| KLEIN, M | STAND | 0 | 1 | 2 | 0000? |
| KLEMM, J | TTY2 | 3 | 4 | 0 | 1567 |
| KOJAK, A | KNGMN | 0 | 1 | 0 | 0? |
| KOLENDA | HARZ1 | 1 | 1 | 0 | 1659* |

| | | | | | |
|---------------|-------|---|---|---|-------|
| KOZACKY, J | PRCON | 0 | 0 | 1 | 1800 |
| KROL, K | PRCON | 0 | 1 | 0 | 0000? |
| KROUSHL, J | PRCON | 0 | 0 | 1 | 0000? |
| KUBAL, C | GAMBT | 3 | 3 | 0 | 1704* |
| KUMRO, D | CHRGR | 4 | 1 | 0 | 1736C |
| LACHAPELLE, G | IHARV | 1 | 0 | 0 | 1174* |
| LAMBERT, E | MTRLA | 0 | 0 | 0 | 0000? |
| LASSILA, K | FERMI | 0 | 2 | 2 | 0000? |
| LATIMER, E | SEARS | 3 | 0 | 0 | 1962 |
| LEE, J | AMOCO | 1 | 2 | 0 | 0000? |
| LEE, REGGIE | GAMBT | 0 | 2 | 0 | 0000? |
| LEE, RJ | AMOCO | 0 | 6 | 1 | 1611 |
| LEMS, W | SEARS | 2 | 1 | 0 | 1565 |
| LEONARD, T | CRSDR | 1 | 3 | 3 | 1802* |
| LEONG, G | KEMPR | 4 | 2 | 0 | 1919 |
| LESNER, K | SIGND | 1 | 2 | 0 | 0000? |
| LI, T | ROYLS | 4 | 1 | 2 | 1350* |
| LICHT, J | GAMBT | 0 | 1 | 0 | 1422 |
| LITVINAS, A | ALUMN | 0 | 1 | 0 | 1440 |
| LOPRESTI, P | SIGND | 0 | 1 | 0 | 0000? |
| LUBENEC, S | CRSDR | 3 | 3 | 1 | 1446* |
| MADISON | PLYRS | 2 | 3 | 0 | 0000? |
| MAGEE, D | STAND | 0 | 1 | 0 | 0000? |
| MANZKE, B | TTY | 4 | 2 | 0 | 0000? |
| MANZKE, R | TTY | 0 | 2 | 0 | 0000? |
| MARCOWKA, R | CHRGR | 4 | 1 | 0 | 1868 |
| MATHEWS, J | ALUMN | 0 | 0 | 0 | 0000? |
| MAY, G | WESCH | 0 | 1 | 0 | 1187* |
| MCAHEL, K | KNGMN | 1 | 3 | 0 | 0000? |
| MEISINGER | GAMBT | 0 | 2 | 0 | 0000? |
| MEYER, D | WESCH | 0 | 2 | 0 | 0000? |
| MICHLICH, F | PRCON | 2 | 1 | 1 | 0000? |
| MICKLICH, F | PRCON | 0 | 1 | 1 | 0000? |
| MIGNERON, R | FERMI | 0 | 2 | 0 | 0000? |

| NAME | TEAM | W | L | D | RATING |
|----------------|-------|---|---|---|--------|
| MIHAILOVICH, S | PAWNS | 5 | 0 | 2 | 1903C |
| MONSER, E | TTY | 1 | 0 | 0 | 0000? |
| MONZANI, A | FLPRO | 2 | 2 | 0 | 1657* |
| MORGAN | STAND | 0 | 1 | 0 | 0000? |
| MOSHER, G | KEMPR | 0 | 2 | 0 | 1192* |
| MOTYCKA, R | IHARV | 2 | 3 | 1 | 1273 |
| MUDE, J | CPCIL | 0 | 4 | 1 | 1227 |
| MUENCH, D | KEMPR | 0 | 1 | 0 | 0000? |
| MUIR, L | AMOCO | 1 | 5 | 1 | 1595 |
| MUNKACSY | KEMPR | 2 | 0 | 0 | 0000? |
| MUNDOZ, R | HARZ1 | 1 | 2 | 0 | 1679 |
| NAIL, D | STAND | 0 | 1 | 0 | 0000? |
| NEUMARK, J | MTRLA | 3 | 0 | 3 | 1741C |
| NIMRY, T | AMOCO | 0 | 4 | 0 | 0000? |
| NINKOVIC, S | ZENTH | 1 | 4 | 2 | 1466* |
| NURME, U | HARZ1 | 1 | 1 | 1 | 1933* |
| O'BRIEN, D | PRCON | 1 | 0 | 0 | 0000? |
| O'DELL, D | APEX | 1 | 1 | 0 | 0000? |
| O'NEAL, J | WESCH | 0 | 2 | 0 | 0000? |
| OELHAFEN, A. | APEX | 0 | 4 | 1 | 1424* |
| OGASAWARA, R | MTRLA | 4 | 3 | 0 | 1599C |
| OSBORNE, W | STAND | 0 | 1 | 0 | 0000? |
| OWENS | IHARV | 0 | 3 | 0 | 0000? |


| | | | | | |
|------------------|-------|---|---|---|-------|
| PAESE, M | CRSDR | 1 | 0 | 2 | 0000? |
| PANFIL, J | APEX | 0 | 1 | 0 | 0000? |
| PARKER, L | KNGMN | 0 | 2 | 2 | 1877 |
| PARMETER, S | CPCIL | 1 | 2 | 1 | 1631 |
| PASTURCZAK, R | SIGND | 1 | 1 | 0 | 0000? |
| PASTURCZAK, RJ | SIGND | 2 | 2 | 0 | 1396 |
| PEEL, A | IHARV | 3 | 1 | 0 | 1669* |
| PETERSON, M | KNGHT | 3 | 2 | 0 | 1783C |
| PETERSON, W | IHARV | 1 | 3 | 2 | 1638* |
| PETTY, B | AMOCO | 0 | 1 | 0 | 0000? |
| PFEFFER, D | ROYLS | 1 | 0 | 0 | 1492 |
| PFEFFER, H | FERMI | 0 | 1 | 0 | 1447 |
| PLANT, B | KNGMN | 1 | 0 | 0 | 1615* |
| POKATILOFF, W | FLPRO | 0 | 2 | 3 | 1394* |
| POPPS, W | WESCH | 2 | 2 | 0 | 1580* |
| PRESCOTT, F | GAMBT | 2 | 1 | 0 | 0000? |
| PUSKAS | ZENTH | 0 | 1 | 0 | 0000? |
| RACUTT, E | APEX | 0 | 5 | 1 | 1098* |
| RADAVICIUS, E | CHRGR | 3 | 1 | 2 | 1610 |
| RATAJCZAK, J | SARAL | 0 | 5 | 0 | 1172* |
| RAVANAM, S | IHARV | 0 | 1 | 1 | 1201* |
| RENNER, T | PAWNS | 2 | 1 | 0 | 1602 |
| REYES, R | SEARS | 3 | 0 | 0 | 2312 |
| RIBALDO, D | SIGND | 1 | 1 | 0 | 0000? |
| RILEY, J | WESCH | 0 | 1 | 0 | 0000? |
| ROBINSON, B | ZENTH | 0 | 1 | 0 | 1313* |
| ROD, R | STAND | 0 | 1 | 0 | 0000? |
| ROSEN, J | KNGMN | 2 | 0 | 1 | 1594 |
| RUNYARD, R | APEX | 0 | 1 | 0 | 0000? |
| SAMDY, A | HARZA | 1 | 0 | 0 | 1927* |
| SAMELSON, C | PLYRS | 3 | 2 | 1 | 1658* |
| SANDY | HARZA | 0 | 1 | 0 | 0000? |
| SAPP, G | STAND | 0 | 1 | 0 | 0000? |
| SATTERLEE, D | IHARV | 2 | 3 | 0 | 1669 |
| SCHIEFERSTEIN, A | CRSDR | 0 | 1 | 0 | 0000? |
| SCHORR, I | WESCH | 0 | 1 | 0 | 0000? |
| SCHULMAN, R | ZENTH | 4 | 2 | 0 | 1818 |
| SCHWARTZ, S | SEARS | 1 | 0 | 0 | 1697C |
| SCOTT, R | PRCON | 0 | 1 | 0 | 0000? |
| SELIN, E | FNBK | 0 | 2 | 0 | 0000? |
| SHAFF, R | KNGMN | 1 | 2 | 0 | 1493 |
| SHAFFER, R | STAND | 0 | 1 | 0 | 0000? |

| NAME | TEAM | W | L | D | RATING |
|--------------|-------|---|---|---|--------|
| SHAPIRO, M | FLPRO | 2 | 2 | 1 | 0000? |
| SHIRKEY, L | ROOKS | 6 | 0 | 0 | 1559C |
| SHUKLA, P | TTY2 | 2 | 3 | 0 | 1312* |
| SINCLAIR, L | HARZA | 1 | 0 | 0 | 0000? |
| SINDEWALD, G | WESCH | 1 | 2 | 0 | 0000? |
| SIVULA, B | SARAL | 1 | 1 | 4 | 1581 |
| SKINNER, S | ZENTH | 2 | 4 | 0 | 1132* |
| SKUJINS, P | KEMPR | 4 | 1 | 1 | 1574* |
| SKULSKI, I | ZENTH | 2 | 2 | 0 | 0000? |
| SMITH, BR | KNGMN | 1 | 4 | 2 | 1537 |
| SMITH, M | FNBK | 1 | 2 | 0 | 1419* |
| SOBUN, J | KNGMN | 1 | 1 | 0 | 1545 |
| SOPYRCH, T | STAND | 2 | 1 | 0 | 0000? |
| SPANGLER, M | AMOCO | 2 | 3 | 1 | 1474* |
| SPLAVER, H | PLYRS | 5 | 0 | 0 | 1948 |

| | | | | | |
|-----------------|-------|---|---|---|-------|
| STAMM, V | GAMBT | 2 | 3 | 1 | 1601C |
| STEJSKAL, J | CPCIL | 1 | 3 | 1 | 1300 |
| STELTON, N | WESCM | 3 | 2 | 0 | 0000? |
| STENSAKER, L | SIGND | 2 | 4 | 0 | 1529 |
| STOCK, R | GAMBT | 1 | 3 | 1 | 1247* |
| STREETS, D | PAWNS | 6 | 0 | 1 | 2110 |
| STUHLBARG, D | PRCON | 3 | 1 | 2 | 1399 |
| STYS, A | PRCON | 1 | 1 | 2 | 1870 |
| SUE, H | TTY2 | 5 | 4 | 0 | 1505* |
| SUERTH, F | MTRLA | 0 | 0 | 1 | 1596* |
| SULLIVAN, J | EXCAL | 3 | 0 | 0 | 1863C |
| SWIDERSKI, M | CHRGR | 3 | 0 | 3 | 1435 |
| SZATMARY, F | SARAL | 2 | 4 | 1 | 1335 |
| TATRO, B | SARAL | 0 | 6 | 0 | 0000? |
| TEGEL, F | TTY | 6 | 1 | 1 | 2026C |
| THOMAS, G | PLYRS | 3 | 1 | 0 | 1370* |
| THOMAS, J | GAMBT | 4 | 1 | 0 | 1485 |
| THOMPSON, R | FLPRO | 0 | 2 | 0 | 1217* |
| THURESON, G | KEMPR | 0 | 1 | 0 | 0000? |
| TOLLENTINO, E | AMOCO | 0 | 1 | 0 | 0000? |
| TOLSON, M | MTRLA | 1 | 2 | 1 | 1145* |
| UHERKA, K | BSHPS | 0 | 1 | 0 | 1383 |
| UNDERWOOD, H | CRSDR | 1 | 5 | 0 | 1520* |
| URBAS, B | CPCIL | 0 | 2 | 0 | 1513 |
| VICK, H | MTRLA | 1 | 2 | 0 | 1497* |
| VITERI, M | PRCON | 1 | 2 | 0 | 1536 |
| VOGEL, T | TTY | 1 | 0 | 0 | 0000? |
| VOLPE, M | EXCAL | 3 | 0 | 0 | 1320 |
| VUKSANOVICH, D | HARZA | 1 | 1 | 0 | 0000? |
| WAGNER, R | TTY | 5 | 1 | 2 | 1678* |
| WALHOUT, M | CRSDR | 4 | 2 | 1 | 1800 |
| WALKER, B | CPCIL | 0 | 2 | 1 | 0000? |
| WALKER, R | FERMI | 1 | 5 | 1 | 1350 |
| WALSH, W | PAWNS | 1 | 2 | 1 | 1517 |
| WARD, C | PLYRS | 2 | 3 | 0 | 1608C |
| WARREN, J | CHRGR | 3 | 1 | 1 | 2026C |
| WEIGAND, J | ZENTH | 1 | 3 | 0 | 1308* |
| WEITZ, R | FLPRO | 2 | 1 | 0 | 1341* |
| WENTLING | STAND | 0 | 0 | 1 | 0000? |
| WESTON, P | ROYLS | 4 | 3 | 1 | 1396 |
| WETTERSTEN, H | CHRGR | 2 | 0 | 0 | 1372 |
| WHITTENHALL, T | APEX | 0 | 3 | 0 | 0000? |
| WHITTENHALL; JR | APEX | 1 | 4 | 0 | 1366* |
| WHITTENHALL; SR | APEX | 0 | 5 | 0 | 0000? |
| WHITTMAN, R | SIGND | 0 | 1 | 0 | 0000? |
| WIENCEK, T | ROOKS | 1 | 1 | 0 | 0000? |
| WILKINSON, D | FERMI | 4 | 1 | 2 | 1884* |
| WILSON, A | ALUMN | 2 | 0 | 0 | 1573 |
| WILSON, R | ROOKS | 2 | 2 | 4 | 1716C |
| WONG, P | EXCAL | 4 | 1 | 0 | 1980 |

| NAME | TEAM | W | L | D | RATING |
|-------------|--------|---|---|---|--------|
| YOUNG, C | KNIGHT | 3 | 1 | 1 | 1860 |
| ZUERCHER, J | TTY | 3 | 1 | 1 | 1376* |

? - UNRATED
 * - 5 TO 9 GAMES
 * - 10 TO 24 GAMES
 C - CENTURY CLUB MEMBER



ILLINOIS CHESS BULLETIN

Official Publication of the Illinois Chess Association, a USCF Affiliate

The ILLINOIS CHESS BULLETIN is published 6 times per year.

The Illinois Chess Association is a not-for-profit organization dedicated to the promotion of chess in Illinois. Magazine features include up-to-date reporting on chess tournament activity in Illinois, with many games annotated by Illinois chess masters and experts. The ILLINOIS CHESS BULLETIN gives advance notice for major chess tournaments in our state and provides a list of chess clubs.

SUBSCRIBE TO THE ILLINOIS CHESS BULLETIN

Subscription to the ILLINOIS CHESS BULLETIN includes a 1 year membership in the Illinois Chess Association, an affiliate of the U.S. Chess Federation. As well as publishing the ILLINOIS CHESS BULLETIN, the ICA organizes chess tournaments in Illinois and serves as a federation of chess clubs and other chess organizations throughout the state. ICA officers donate their time; no one is paid.

During the last 2 years since Helen Warren became Editor for the ICB, the ILLINOIS CHESS BULLETIN, as the premier state chess publication in the United States, has received numerous chess journalism awards. By subscribing to the ICB, you are not only assuring yourself of the best chess news coverage for Chicago and Illinois. You are also helping to support chess in Illinois.

Regular 1 year subscription is \$5. Patron Membership is \$25.

Send subscriptions to :

HELEN WARREN, EDITOR, ILLINOIS CHESS BULLETIN, P.O. BOX 70,
WESTERN SPRINGS, ILLINOIS 60558

NAME _____

ADDRESS _____

CITY & ZIPCODE _____

ARE YOU A USCF MEMBER ? _____

RATING _____

Please make your check payable to the Illinois Chess Association.

\$5 REGULAR MEMBERS \$25 PATRON