

CHICAGO INDUSTRIAL CHESS LEAGUE BULLETIN

VOLUME 24, NUMBER 6



USCF AFFILIATE
FOUNDED 1957



CONTENTS	PAGE
ON THE COVER.....	2
CICL OFFICERS.....	3
GRAFFITI.....	4
GAMES.....	5
CICL TORNADO TOURNAMENT ANNOUNCEMENT.....	9
WORLD VIEW.....	10
SPRING BUSINESS MEETING ANNOUNCEMENT.....	11
NEAR WEST DIVISION REPORT.....	11
FAR WEST DIVISION REPORT.....	12
NORTH DIVISION REPORT.....	12
EAST DIVISION REPORT.....	14
CICL TEAM STANDINGS.....	15
DIVISION TOP TEN.....	16
MOST IMPROVED PLAYERS.....	17
MATCH RESULTS.....	17
RATINGS.....	22
ILLINOIS CHESS BULLETIN ANNOUNCEMENT.....	29



EDITOR.....Don Graft
 COLUMNIST.....Helen Warren
 GAMES EDITOR.....Dave Baurac
 GRAPHICS.....Larry Kwiatek
 STATISTICS.....Paul Weston
 Joe Brozovich
 PRINTING/
 DISTRIBUTION.....Norm Hughes



ON THE COVER.....This detail of a painting by Magritte graphically conveys the brutal nature of chess. (CORRECTION--In Bulletin number 5, the cover was referred to as an adaptation of a woodcut by M.C. Escher. Of course, we should have said drawing instead of woodcut.)



CHICAGO INDUSTRIAL CHESS LEAGUE
OFFICERS, 1980-81



President:

Gee Leong
Kemper Insurance Co.
Field Systems B-3
Long Grove, IL 60047
540-2233 (work)
367-4132 (home)

Secretary:

Charles Ward
Dept. 5446, Room 6H341
Bell Telephone Laboratories
Warrenville & Naperville Roads
Naperville, IL 60556
462-6250 (work)
325-3885 (home)

North Division Chairman:
Treasurer:

Jim Brotsos
6563 N. Tahoma Ave.
Chicago, IL 60646
775-5054 (home)

Near West Division Chairman:

Dan Kumro
802 S. Elmhurst Road
Mt. Prospect, IL 60056
981-2221, 981-2224 (work)
259-4981 (home)

East Division Chairman:

Tom Gaffigan
First National Bank
16th Floor
1 First National Plaza
Chicago, IL 60670
732-3988

Far West Division Chairman:

Joe Brozovich
Room 1Y-425
Bell Telephone Laboratories
1100 East Warrenville Road
Naperville, IL 60566
Phone: 462-7316

Bulletin Editor:

Don Graft
Rockwell-Wescom
8245 Lemont Road
Downers Grove, IL 60515
985-9000, ext. 2731

Ratings Chairman:

Paul Weston
1741 Violet Street
Aurora, IL 60505
983-4090 (work)
898-7683 (home)

GRAFFITI

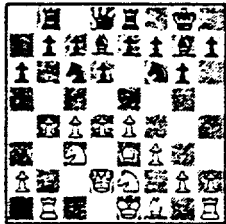
In response to my request in Bulletin number 4 for a line against 4. Q-Q4 in the Budapest, Kaz Jakstas of the BTL Royals has sent me the following line from the 10th edition of Modern Chess Openings by Evans and Korn: 1.P-Q4 N-KB3 2.P-QB4 P-K4 3.PxP N-N5 4.Q-Q4 P-Q3 5.PxP BxP 6.N-KB3 O-O 7.N-B3 N-QB3 8.Q-Q1 B-K3 "with compensation for the pawn". Kaz also made the point that the Budapest is a gambit and therefore one ought not to worry that White can retain the pawn. However, it seemed to me that with 4.Q-Q4 White not only holds the pawn but also prevents any significant compensation. I have not studied the line above in detail and so will withhold judgement for now. Besides, I'll have to ask Sensory Chess Challenger what his opinion of the line is!

Readers may have noticed that Bulletin number 5 arrived with only one staple in the corner instead of the usual three along the left side. Readers who like to have the feel of a magazine can easily remove the corner staple and staple the left side three times. I imagine that the single staple saves Norm some time in distribution of the Bulletin. Readers may also have noticed that the cover carries no month designation. This is because material is not always received on time and I layout the Bulletin only when all material is in hand. This, together with other demands on my time, means that a monthly schedule cannot always be adhered to. The total number of Bulletins will remain the same, but they may not come out on a precise monthly schedule.

I am sure that CICL members will join me in saying goodbye to Peter Hoppner, who is leaving the Chicago area and, thus, the CICL. Peter was the team captain of the BTL Royals. We wish him the best of luck in the future.

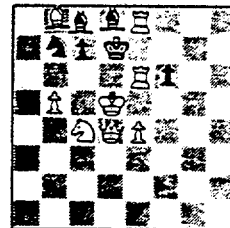
I suppose I should have known that Caissa (the Goddess of chess) would not have liked the cover of Bulletin number 5. How dare I allow the portrayal of a chess nightmare to be published? My punishment was swift and sure: In my first match after releasing the cover I lost one of the worst games that I have ever played in the CICL (the victor was Art Peel). Will I be punished for this month's cover?

Don Graft



GAMES

By Dave Baurac



Please send games to Dave Baurac, 7517 Country Lane South, Darien, Illinois 60559. If you give notes, you are entitled to a diagram, so be sure to indicate where you want it.

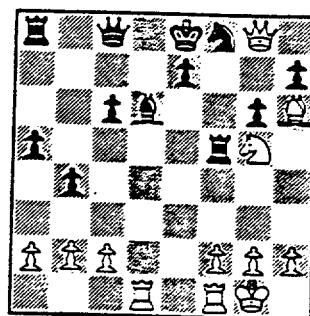
On February 1, 1979, Mark Peterson, playing for the Argonne Bishops, beat Bob Marcowka of the Western Electric Chargers. At the time, Bob held a rating edge over Mark of more than 200 points. This win started Mark on an undefeated string that spanned almost two complete seasons. In the 1979-80 season, Mark switched to the Argonne Knights, and his streak helped them to an undefeated and untied regular season. Although the Knights didn't fair too strongly in the playoffs (1-1-1), Mark won both his playoff games.

Since Mark's string began against the Chargers, it is fitting that it finally ended against them on December 18, 1980, at the hands of Dan Kumro.

Pirc Defense: D. Kumro, Western Electric Chargers-M. Peterson, Argonne Knights, 1980. Notes by Dan Kumro, unless otherwise noted.

1. P-Q4 N-KB3 2. N-QB3 P-Q3 3. P-K4 P-KN3 4. N-KB3 B-N2 5. B-QB4 P-B3 6. O-O (White castles, but Black neglects this safety move too long and eventually pays the price. Black starts an early attack.) P-QN4 (Van Scheltinga-Botvink, Wageningen, 1958, continued 6. ... P-Q4 7. B-Q3 B-N5 8. P-K5 KN-Q2 9. P-KR3 BxN 10. QxB P-K3 11. N-K2 P-QB4 12. P-B3 N-QB3 with a small advantage to Black. -- D.B.) 7. B-N3 (7. B-Q3 P-N5 8. N-K2 B-N5 9. N-N3 QN-Q2 is Feller-Keene, Siegen, 1970; the position is unclear, according to ECO. -- D.B.) P-N5 8. P-K5 PxP 9. PxP N-Q2 (Kumro notes that Black debated 20 minutes before deciding not to trade queens. 9. ... QxQ 10. RxQ N-N5 looks better. After 11. N-K4 NxKP 12. KN-N5 O-O, Black looks alright. For example, 13. P-KB4 N-N5 14. P-KR3 N-B3 15. P-N4 P-KR3, and Black has some problems developing his Q-side, but White's attack is stopped and the White K-side is loose. -- D.B.) 10. N-K4 Q-B2 (It looks like Black can win a pawn, but it's not that simple: 10. ... NxP? 11. QxQ KxQ 12. NxN BxN and either 13. BxP or 13. N-N5 regains the material with advantage.) 11. P-K6 PxP 12. BxP N-K4 13. BxB (White took 15 minutes on this move and decided to keep it simple. 13. N-N5 may be better, but is also riskier; it might leave too many White pieces in Black territory. Besides, time was becoming a factor.) QxB 14. NxN BxN 15. Q-B3 R-B1 (White is still looking to get in N-N5.) 16. Q-QN3 P-QR4 17. B-R6 R-B4 (Black must still be playing for a win, but the back rank now becomes White's attacking goal. While Black's position is disorganized, White brings

his rooks into play.) 18. QR-Q1 N-Q2 19. Q-N8ch N-B1 20. N-N5 B-Q3 (See diagram. Black is trying to build an escape route, but White's reply keeps the Black monarch pinned down and removes Black's bishop from any threats on the White king.) 21. RxB! PxR 22. R-K1ch K-Q1 23. N-K6ch K-K2 (With the his K coming back to the K-file, Black's position is hopeless. There are too many attacking possibilities to analyze.) 24. Q-N7ch R-B2 (24. ... K-K1 25. N-B5ch! and Black must give up his Q to stop mate. If 25. NxN R-K4 26. RxRch PxR 27. QxPch K-B2 -- not 27. ... K-Q1 28. B-N5 mate -- 28. Q-N7ch K-K1 29. B-N5 R-R2 30. QxR KxN 31. Q-K7ch K-N1 32. B-R6 and mate next move. -- D.B.) 25. NxNch K-Q1 26. QxR. (The rook threatens mate in two. It could also be noted that White didn't waste any pawn moves because six of his pawns are on their original squares.) 1-0.



Position after 20. ... B-Q3.

The first FIDE rating list for 1981 shows world champion Anatoly Karpov of the Soviet Union still the highest rated player in the world with a rating of 2690. Tied for second at 2650 are Viktor Korchnoi of Switzerland and Lajos Portisch of Hungary. Conspicuously absent from the top 15 is former world champion Mikhail Tal who was second this time last year.

Soviets dominate the list with seven players in the top 15. The highest rated American, 2575, is international grandmaster Lev Alburt, a Soviet emigre living in New York. Here are the top 15:

Karpov, USSR	2690	Polugaevsky, USSR	2620
Korchnoi, Switzerland	2650	Timman, Holland	2620
Portisch, Hungary	2650	Geller, USSR	2615
Huebner, West Germany	2635	Mecking, Brazil	2615
Spassky, USSR	2635	Andersson, Sweden	2610
Kasparov, USSR	2625	Larsen, Denmark	2610
Beliaevsky, USSR	2620	Ljubojevic, Yugoslavia	2605
Balashov, USSR	2600		

Gari Kasparov, incidentally, is 17 years old. He's an international grandmaster and reigning world junior champion. The kid's got a hell of a future.

Benoni Counter Gambit: Kraus-Costin, Postal Game, 1914.

1. P-Q4 P-QB4 2. PxP Q-R4ch 3. N-B3 QxBP 4. P-K4 P-K4 5. N-B3 P-Q3
6. N-Q5 N-K2 7. P-QN4. 1-0.

U.S. co-champion Larry Christiansen tied for first place with world champion Anatoly Karpov in the all-grandmaster tournament at Linares, Spain. Both scored eight points of a possible 11. Karpov was declared the winner on tie-breaks.

Queen's Gambit Declined: Christiansen-Spassky, Linares, 1981.

1. P-Q4 P-Q4 2. P-QB4 P-K3 3. N-QB3 N-KB3 4. PxP PxP 5. B-N5 B-K2
6. P-K3 QN-Q2 7. B-Q3 O-O 8. KN-K2 P-B3 9. Q-B2 R-K1 10. P-KR3 N-B1
11. P-KN4 B-Q2 12. O-O-O R-B1 13. K-N1 P-N4 14. N-B4 P-QR4 15. B-B5
P-R5 16. N-Q3 BxB 17. PxB N/1-Q2 18. KR-N1 B-B1 19. R-N2 P-B4 20.
PxP NxP 21. NxN RxN 22. Q-Q3 K-R1 23. N-K4 RxN 24. QxR Q-B1 25. Q-Q3
N-K5 26. P-B3 NxB 27. RxN B-K2 28. P-B6 BxP 29. RxQP P-R3 30. RxR
QxR 31. R-QB1. 1-0.

For daring and precise play with an exposed king, Jonathan Mestel of England received the brilliancy prize at the Chess Olympiad, held last December.

French Defense: J. Mestel, England-N. Renman, Sweden, Chess Olympiad, Malta, 1980.

1. P-K4 P-K3 2. P-Q4 P-Q4 3. N-QB3 B-N5 4. N-K2 PxP 5. P-QR3 B-K2 6.
NxP N-KB3 7. Q-Q3 QN-Q2 8. B-B4 O-O 9. O-O-O NxN 10. QxN P-QB4 11. N-B3
N-B3 12. Q-K1 PxP 13. B-K5 Q-R4 14. RxP R-Q1 15. R-QR4 Q-N3 16. R-QB4
R-Q2 17. B-Q3 P-QR3 18. P-KN4 Q-Q1 19. P-N5 N-R4 20. R-N1 P-KN3 21.
R-KR4 BxPch 22. RxB QxRch 23. P-B4 Q-K2 24. RxN P-B3 25. Q-N1 RxB 26.
PxR PxP 27. PxP Q-N2 28. R-N5 B-Q2 29. N-K4 R-B1ch 30. K-N1 B-N4 31.
N-B6ch K-R1 32. Q-K3 Q-QB2 33. R-N2 Q-B3 34. R-KB2 Q-R8ch 35. K-R2 R-B8
36. Q-R6 R-R8ch 37. K-N3 Q-Q8ch 38. K-N4 Q-R5ch 39. K-B5 P-N3ch 40. KxP
Q-Q5ch 41. K-N7. 1-0. (After 41. ... B-B3ch 42. KxB Q-R5ch 43. K-K6 Q-Q5ch
44. KxP Q-N3ch 45. K-Q5 Q-N4ch 46. K-Q4 Q-N3ch 47. K-K4 Q-B3ch 48. N-Q5
R-K8ch 49. K-Q4 Q-R5ch 50. P-N4, Black runs out of checks.)

King's Indian Defense: Portisch-Adorjan, Hungary, 1979.

1. d4 Nf6 2. c4 g6 3. Nf3 Bg7 4. g3 O-O 5. Bg2 d6 6. Nc3 Nc6 7. O-O
a6 8. Nd5 Ne4?! (Portisch-Timman, Montreal, 1979 continued 8. ... Bg4!
9. Ne3 Bf3 10. Bf3 Nd7 11. d5 Nd4 12. Bg2 c5 13. Bd2 b5 14. Rc1 a5!
15. cb a4 16. Nc4 Nb5 17. f4 Qc7 18. e3 Ra6 19. Rf2 Qa7 20. Bf1 Rb8 21.
Be1 Qa8 22. Rd2 Ra7 23. Qf3 Nc7 with an unclear position.) 9. Ne3 f5
10. d5 Na5 11. Nd2 Ng5 (If 11. ... Nf6? 12. b4 wins.) 12. Rb1 c5 13.
a3 f4!? 14. gf Nh3+ 15. Kh1! b5 16. f5! Nf4 (If 16. ... gf? 17. Bh3 f4
18. Bc8 fe 19. Be6+ wins.) 17. fg Ng2 18. gh+ Kh8 19. Ng2 e6 20. b4
cb (20. ... Nc4 21. Nc4 bc 22. Nf4! Qf6 23. Rg1, advantage White.)
21. Rb4 bc 22. Nc4 Nc4 23. Rc4 ed 24. Rh4! Rb8 25. Bh6 Qf6 26. Bg7+
Qg7 27. Nf4 Bf5 28. Rg1 Qe5 29. Nd3! Qf6 30. Rf4 Rf7 31. Rg3 Rbf8 32.
f3 Rh7 33. Qg1 Qh6? (Time trouble.) 34. Rf5!. 1-0.

Nana Ioseliani and Nana Alexandria, both of Soviet Georgia, have won their semifinals matches in the women's world championship cycle and will meet later this year for the right to challenge the reigning champion, 20-year-old Maya Chiburdanidze, also of Soviet Georgia. In the semifinals, Ioseliani defeated former champion Nona Gaprindashvili, another Soviet Georgian. It must be something in the water.

Blumenfeld Counter Gambit: Gaprindashvili-Ioseliani, Candidates Match, 1981.

1. d4 Nf6 2. c4 e6 3. Nf3 c5 4. g3 cd 5. Nd4 Qa5+ 6. Nc3 Bb4 7. Qd3 Ne4 8. Nb3 Qf5 9. Qe3 Nc3 10. bc Be7 11. Bg2 d6 12. 0-0 0-0 13. Ba3 Nd7 14. Qd3 Qh5 15. Bd6 Bd6 16. Qd6 Qe2 17. c5 Ne5 18. Nd4 Qh5 19. Rfe1 Nc4 20. Qc7 e5 21. Nb3 a5 22. Bd5 Be6 23. Rad1 a4 24. Nc1 Rad8 25. Bf3 Rd1 26. Bd1 Qg5 27. Bf3 Qd2 28. Rd1 Qc3 29. Qb7 Nd2 30. Be2 h6 31. Qe7 Bd5 32. Qd6 Nf3+ 33. Bf3 Bf3 34. Qd3 Qd3 35. Rd3 e4 36. Rd4 Rc8 37. Ra4 Rd8. 0-1.

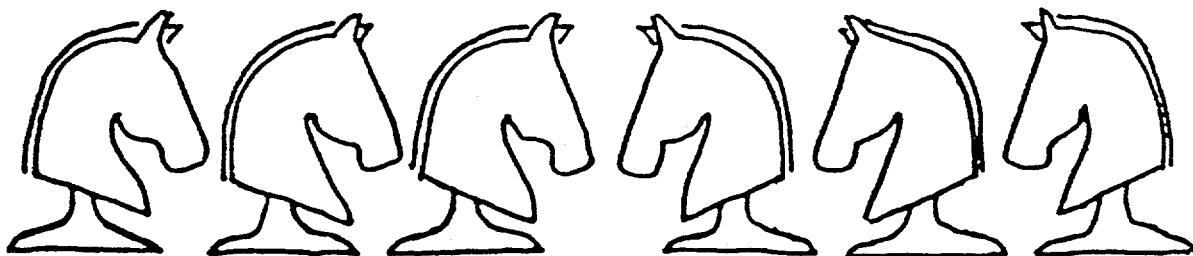
Queen's Indian: Alexandria-Litinskaya, Candidates Match, 1981.

1. d4 Nf6 2. c4 e6 3. Nf3 b6 4. Nc3 Bb7 5. a3 d5 6. cd ed 7. g3 Bd6 8. Bg2 0-0 9. 0-0 c6 10. Ne5 Qe7 11. Nd3 Nbd7 12. Bf4 Rfe8 13. Rc1 Ne4 14. e3 Nc3 15. Rc3 Qe6 16. Bd6 Qd6 17. Qc2 Rad8 18. Rc1 Qh6 19. b4 a6 20. a4 Nb8 21. b5 ab 22. ab cb 23. Rc7 Ba8 24. Ne5 Qe6 25. Nf7 Rd7 26. Ne5 Rc7 27. Qc7 Na6 28. Qa7 Nb4 29. Rc7 Qh6 30. Qa3 Qd6 31. Ra7 Qb8 32. Nd7. 1-0.

French Defense: Tal-Portisch, Montreal, 1979.

1. e4 e6 2. d4 d5 3. Nd2 c5 4. ed ed 5. Bb5+ Bd7 6. Qe2+ Be7 (Karpov-Korchnoi, 16th match game, 1978, continued 6. ... Qe7 7. Bd7+ Nd7 8. dc Nc5 9. Nb3 Qe2+ 10. Ne2 with advantage to White.) 7. dc Nf6 8. Nb3 0-0 9. Nf3 Re8 10. Be3 a6 11. Bd3 Ba4 12. Nfd4!? Nbd7 13. 0-0-0 (A new move that gives White the advantage. Against Portisch at Tilburg, 1978, Larsen played 13. 0-0 with equality.) Nc5 14. Nf5 Bf8 15. Nc5 (15. Qf3 Nce4!) Bc5 16. Qf3 Be3+ 17. Ne3 Rc8 (17. ... Bc5 18. Nf5!) 18. Bf5!? Rc5 19. Rd4!? Bc6 20. b4 Rb5 (20. ... Rc3 loses to 21. Kb2.) 21. a4 Rb6 (21. ... Rb4! is best, but White maintains a small advantage after 22. Rb4 d4 23. Qd1 de 24. Qd8 Rd8 25. fe Bg2 26. Rd1 Re8 27. Bd7 Re3 28. Bc8.) 22. a5 Rb5 23. Qf4! b6 24. Bd3 ba 25. Bb5 ab 26. Rhd1! ab 27. Kb2 Qc8 28. Rb4 Ne4 29. Rd3 (29. Nf5? Bd7 30. Re4 Re4 31. Qe4 Bf5 32. Qe2 b4!!, equality.) Nc5 30. Ra3 Na4+ 31. Kc1 Bd7 32. Qd6 Bc6 (32. ... Bf5 loses to 33. Rb5 Re3 34. Rb8.) 33. Rd3 h6 34. Rf4! (Intending Nf5.) Qe6? (34. ... Re6.) 35. Qe6 fe 36. Ng4! e5 37. Rf5 Nc5 (37. ... e4 38. Rg3, and White wins.) 38. Rc3 Bd7 39. Re5. 1-0.

C.I.C.L.



INDUSTRIAL TORNADO

Saturday MAY 9

GUARANTEED PRIZES

1st \$75 2nd 50

Class B, C, D/E/Unr 25 each

Top C.I.C.L. player - Trophy

Top junior - Chess Book

**SITE: Western Electric's Albright Gym on Cermak Rd. & 50th Ct.
2 blocks west of Cicero Ave. Cicero, Ill**

4 Round Swiss 35/60

1st round accelerated if more than 40 entries

ROUNDS: 9:30 - 1 - 4 - 7

REGISTRATION: 9 - 9:30 am

ENTRY FEE: \$9 if recd by May 5 (\$8 for C.I.C.L.

players); \$11 at door. Adv entries

to Dave Baurac, 7517 Country Ln S,

Darien, IL 60559.

**Bring clock, set and board
No smoking (gym regulations)**

world




View

by JOHN TOMAS

GREAT BRITAIN: GM John Nunn defeated IM William Hartston 3½-2½ (1-0-5) to win the 1980 BCF Championship. The two had tied in last August's tournament with 8-3 scores.

HOLLAND: Jan Timman and Gennady Sosonko tied for first with identical scores of 8-4. The Soviet duo of Taimanov and Svernsnikov tied for 3-4 with 7-5, while US Co-champion Walter Browne turned in the final plus score with 6½. Sax, Gheorghiu, Andersson, and Miles were all lower on the list. Browne's win over Gheorghiu was generally considered the most brilliant of the event.

BROWNE	GHEORGHIU	Queen's Indian Def.
1 P-Q4	N-KB3	23 BxP+
2 P-QB4	P-K3	
3 N-KB3	P-QN3	23... KxB
4 N-B3	B-N2	24 QxR/7 Q-R1
5 P-QR3	P-Q4	25 Q-R5+ K-N1
6 PxP	NxP	26 QxP+ Q-B2
7 P-K3	B-K2	27 QxB N-B5
8 B-N5+	P-B3	28 Q-Q7 R-Q1
9 B-Q3	NxN	29 QxB QxQ
10 PxN	P-QB4	30 RxQ NxB
11 P-K4	N-B3	31 P-KR4 P-R4
12 B-N2	R-QB1	32 N-N5 N-B5
13 Q-K2	PxP	33 N-K6 R-Q8+
14 PxP	O-O	34 K-R2 NxP
15 O-O	B-B3	35 P-R5 N-R5
16 QR-Q1	N-R4	36 RxP+ K-R1
17 KR-K1	B-B3	
18 P-Q5	PxP	
19 P-K5	B-K2	
20 P-K6	B-QR5	
21 PxP+	RxP	
22 Q-K6	BxR	

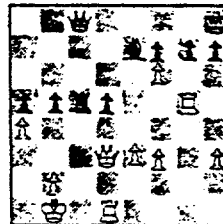
And White won on move 39

SPAIN: Larry Christiansen turned in the finest result of his career with his 8-3 score tying him for first place with World Champion Anatoly Karpov in Linares in January. Christiansen scored six wins and only one loss (to Karpov). Among his victims were Spassky,

Portisch, and Gligoric. Only Robert Byrne's third place at the 1973 Interzonal at Leningrad behind Karpov and Korchnoi can be considered so important a result for an American. Here is Christiansen's first round defeat of Boris Spassky:

CHRISTIANSSEN-SPASSKY

1 d4 d5 2 c4 e6 3 Nc3 Nf6 4 cxd5 exd5 5 Bg5 Be7
6 e3 O-O 7 Bd3 Nbd7 8 Nge2 Re8 9 Qc2 Nf8 10 h3 c6
11 g4 Bd7 12 O-O-O Rc8 13 Kbl b5 14 Nf4 a5 15 Bf5
a4 16 Nd3 Bxf5 17 gxf5 N8d7 18 Rhg1 Bf8 19 Rg2 c5
20 dxc5 Nxc5 21 Nxc5 Rxc5 22 Qd3 Kh8 23 Ne4 Rxe4
24 Qxe4 Qc8 25 Qd3 Ne4 26 f3 Nxg5 27 Rxg5 Be7
28 f6



28...Bxf6 29 Rxd5 h6 30 Rxc5 Qxc5 31 Rcl 1-0

Harold Lommer, author of 1234 Modern Endgames and 1357 Modern Endgames and a noted composer in his own right died in Valencia on December 17, 1980 at the age of 77. A more detailed appreciation will appear in a future issue.

USSR: Alexander Kotov, winner of the second Interzonal, died in early January at the age of 68. In recent years Kotov devoted his energies to writing, producing two excellent instructional books (Think Like a Grandmaster and Play Like a Grandmaster) as well as a polemic biography "rehabilitating" Alekhine.

CHESS OSCAR GOES TO KARPOV... To almost no one's surprise, the XIV Chess Oscar went to World Champion Anatoly Karpov, his seventh in the last eight years. Karpov garnered 1258 weighted points to Korchnoi's 1103. Garry Kasparov took third spot with 890 ahead of Dutch star Jan Timman, Hubner, Miles, Portisch, Larsen, Anderssen, and the sole newcomer, Soviet Belyavsky.

Reprinted with permission from Illinois Chess Bulletin, April 1981

John Tomas is the Associate Editor of the Illinois Chess Bulletin and a USCF Voting Member.



SPRING BUSINESS MEETING ANNOUNCEMENT



The Spring Business Meeting will be held on Thursday, April 23, 1981 at 6:30pm in the Western Electric Albright Gymnasium. Albright Gymnasium is located on Cermak, two blocks west of Cicero. Call Vern Stamm for detailed directions. All CICL members are invited to attend.



NEAR WEST DIVISION REPORT



By Dan Kumro

At the close of the season after nine complete rounds, the two contenders for the Near West Division have been decided. For the fifth straight year, the Western Electric Chargers have made it to the playoffs. Joining them for the first time are the BTL Players. Both teams have identical records of 6-1-1 and meet "head-on" in the tenth round to decide the division champion. With one round to go, all other teams have 3½ or more in the loss column and cannot overtake either the Chargers or the Players. However, after eight rounds the International Harvester team (2½ in the loss column) and the Argonne Knights team (3½ in the loss column) still were in the running. The Knights had made the playoffs the four previous seasons but for Harvester it was their first real chance at a playoff spot. Unfortunately, Harvester lost to the BTL Players in round nine after beating them in round seven. Harvester is now faced with the tough task of having to beat the strong Argonne team in round ten to capture third place.

Team captains should note that we will be using the same format to decide the MVP award this year as outlined in the previous year's Bulletins 3 and 4.



FAR WEST DIVISION REPORT



By Joe Brozovich

Peter Hoppner, captain of the BTL Royals, has left Bell Laboratories and the Chicago area. The new temporary captain is Kaz Jakstas and his phone number is 462-4831.

As we enter the home stretch, there are three teams fighting for trophies: the ANL Rooks, the ANL Pawns, and the BTL Royals. The interesting aspect of this race is that all three of these teams face each other in the final rounds of regular season play. It looks like it's a good idea for these teams to adhere to the schedule so that a potential playoff round can be completed before the championship playoff begins.

An interesting thing happened in the last match between the ANL Pawns and the Western Electric Kingsmen. An illegal move was detected in my game several moves after it was played. Unfortunately, I didn't know what to do about the situation at the time and a minor controversy ensued. The moral of this story is: Whenever a strange situation arises in a game, one or both of the participants should notify the team captains as soon as the problem is detected and let the team captains resolve it. If the team captains cannot agree, then the home team captain's position is taken. However, the visitors can formally protest the match if they don't agree with the decision. Furthermore, whenever team captains are requested to act as referees while playing a clock-controlled game, they are allowed to stop their clocks while carrying out their duties (CICL Rules, Section D, Paragraph 2).



NORTH DIVISION REPORT



By Jim Brotsos

As the season draws to a close, the only position that seems to be locked up is the anchor spot, which falls to newcomer Apex Tool Works. Before the match between Sara Lee and Apex, Ned Anderson of Sara Lee stated that the cake-bakers had never finished last and they were not going to start this year. Ned could round up only three teammates to make the trip to Apex, but despite absorbing two forfeits, his team won 3½-2½. To emphasize this psychological thrashing, Dick Hanson checkmated J. Whittenhall Jr. in eleven moves on board 3. This jewel-in-the-rough appears at the end of this report.

The Teletype Knights still are rolling steadily to a possible undisputed division championship. If they are caught by Kemper Insurance (a team that is certainly fighting for a playoff berth), and both teams have equal match points, a playoff match will be required by 4-30-81. The team that played at home during the regular season will play away during the playoff match (if required). If the playoff match ends in a draw, tiebreaking will take place as described in the Minutes for the Business Meeting of August 23, 1979.

MVP Tiebreakers--All Team captains should take note of who their MVP candidates might be. The primary definition of the MVP is that player who earned the most points for his team during the season. A universal tiebreaker for the MVP is as follows:

- (a) The most important factor is average board position. There is no doubt in my mind that a successful player at a top board is much more valuable to his team than a winning 6th board player. In fact, I believe a top board player who makes every match and winds up with a 6-4 record could easily be more valuable to his team than the 6th board player who finishes 10-0. After all, without the presence of the top board player, all the others would be moved up one board and the resulting stiffer competition could lead to all five of them doing considerably worse in total points amassed. The primary tiebreaker will be the mean (average) board position played, the lowest mean determining the winner.
- (b) A secondary tiebreaker suggested by Dan Kumro rewards players for winning their game in a match won by the score of $3\frac{1}{2}$ - $2\frac{1}{2}$. The theory is that a win in an otherwise tied match can be regarded as having clinched the match whereas in a 6-0 shutout, the win by the same player had only a minor incremental effect. Thus, the number of close-match victories by the contestants will be tallied and the highest total will win.
- (c) The tertiary tiebreaker will be the ratio of over-the-board victories to total points earned by the contestant. This will penalize a player earning game victories by way of forfeits. Naturally, this player deserves credit for showing up for the match and waiting an hour for the time forfeiture to occur, but a player winning a game through effort and talent deserved even more credit. Thus, if the first two tiebreakers fail to resolve the tie, each contestant's total points earned less forfeit wins will be divided by total points earned. The player with the highest factor will win.
- (d) The final tiebreaker will be total number of victories while playing the black pieces. A victory is a victory, but since winning with black is theoretically more difficult than winning with white, more credit will be given for these wins. The player with the greater number of victories with black will edge out his competitor.

Please submit the names of your candidates for the MVP award at the end of the regular season schedule. I cannot be expected to review records of players not identified as MVP candidates. Be sure to include sufficient details of each candidate's records so that tiebreaking calculations can be made.

Good luck to all teams in these last weeks of competition!

Dick Hanson (White) versus Jim Whittenhall Jr. (Black)

- | | | | |
|----------|-------|----------|-------|
| 1. P-K4 | N-QB3 | 7. P-Q3 | P-QB4 |
| 2. P-KB4 | P-K4 | 8. N-Q5 | B-K3 |
| 3. N-KB3 | P-KB3 | 9. P-KB5 | B-KB2 |
| 4. B-B4 | KN-K2 | 10. B-Q2 | P-KN3 |
| 5. N-B3 | P-Q3 | 11. NxP | mate |
| 6. O-O | N-Q5 | | |

 EAST DIVISION REPORT 

By R. Reyes

The current standings in the East Division are as follows:

<u>TEAM</u>	<u>W-L-D</u>	<u>POINTS</u>
Sears	6-0-1	36
Alumni	5-0-1	26
Harza	2-5-0	15½
Standard	2-4-0	12½
1st Nat'l	1-7-0	9

It appears that Sears has clinched the Division Championship. The battle for the last seat in the playoffs depends on the result of Harza versus Standard Oil.

A late match report follows:

Sears (Home) vs. Harza

1. R. Reyes	1	V. Nurme	0
2. E. Latimer	1	A. Samoy	0
3. R. Golla	1	P. Kolenda	0
4. H. Chan	1	O. Bujwid	0
5. S. Schwartz	0	R. Muñoz	1
6. W. Lems	1	D. Vuksanovic	0



CICL TEAM STANDINGS



NEAR WEST DIVISION 27-Mar-81

TEAM NAME	W	L	D	GAME POINTS	MATCH POINTS	PCT
BTL PLAYERS	6	1	1	29.5	6.5	0.813
WE CHARGERS	5	1	1	30.0	5.5	0.786
ANL KNIGHTS	4	3	1	29.0	4.5	0.563
INT'L HARVESTER	4	3	1	23.5	4.5	0.563
WE GAMBITEERS	2	4	2	21.0	3.0	0.375
WESCOM	1	4	2	15.0	2.0	0.286
CPC INTERNATIONAL	0	6	0	8.0	0.0	0.000

NORTH DIVISION 27-Mar-81

TEAM NAME	W	L	D	GAME POINTS	MATCH POINTS	PCT
TELETYPE KNIGHTS	8	0	0	39.0	8.0	1.000
KEMPER INSURANCE	7	1	0	32.5	7.0	0.875
MOTOROLA	6	2	0	33.5	6.0	0.750
EXCALIBERS	6	2	0	31.5	6.0	0.750
PROCON/UOP	3	3	1	21.5	3.5	0.500
SIGNODE	3	4	1	21.0	3.5	0.438
TELETYPE #2	3	4	1	20.5	3.5	0.438
ZENITH-GLENVIEW	3	4	1	20.0	3.5	0.438
FEL-PRO	2	6	0	16.0	2.0	0.250
KITCHENS OF SARA LEE	1	8	0	19.0	1.0	0.111
APEX TOOL WORKS	0	8	0	8.5	0.0	0.000

FAR WEST DIVISION 27-Mar-81

TEAM NAME	W	L	D	GAME POINTS	MATCH POINTS	PCT
ANL ROOKS	8	1	1	43.5	8.5	0.850
BTL ROYALS	7	2	1	37.0	7.5	0.750
ANL PAWNS	6	2	1	35.0	6.5	0.722
WHEATON COLLEGE	5	6	0	29.0	5.0	0.455
FERMILABS	3	5	1	23.5	3.5	0.389
WE KINGSMEN	1	6	3	23.0	2.5	0.250
AMOCO	0	8	1	13.0	0.5	0.056

EAST DIVISION 27-Mar-81

TEAM NAME	W	L	D	GAME POINTS	MATCH POINTS	PCT
SEARS	2	0	1	14.5	2.5	0.833
ALUMNI CENTRAL	1	0	1	8.0	1.5	0.750
HARZA ENGINEERING	1	2	0	9.0	1.0	0.333
STANDARD OIL COMPANY	1	2	0	6.0	1.0	0.333
FIRST NATIONAL BANK	1	2	0	3.5	1.0	0.333



DIVISION TOP TEN



EAST DIVISION

REYES, R	SEARS	2312
CZERNIECKI	ALUMN	2122
LATIMER, E	SEARS	1962
NURME, U	HARZ1	1933*
GIBBS	FNBK	1921
ANDRESEN, T	SEARS	1883
GOLLA, R	SEARS	1842
DUNWORTH, J	ALUMN	1825
FABIJONAS, R	ALUMN	1825C
FEILER, K	FNBK	1797

FAR WEST DIVISION

STREETS, D	PAWNS	2085
JAKSTAS, K	ROYLS	2060
KUCERA, D	ROOKS	1970
SUZUKI, W	PAWNS	1939
WILKINSON, D	FERMI	1914*
JACKSON, J	ROOKS	1912C
PARKER, L	KNGMN	1906
BERRY, G	ROOKS	1899C
MIHAILOVICH, S	PAWNS	1889C
WALHOUT, M	CRSDR	1803

NORTH DIVISION

BUERGER, E	EXCAL	2134
TEGEL, F	TTY	2026C
WONG, P	EXCAL	1980
LEONG, G	KEMPR	1963
VANMEER, J	KEMPR	1946*
STYS, A	PRCON	1870
JACOBS, N	TTY	1858
SULLIVAN, J	EXCAL	1851C
SCHULMAN, R	ZENTH	1821
KOZACKY, J	PRCON	1800

NEAR WEST DIVISION

BENEDEK, R	KNGHT	2140
WARREN, J	CHRGR	2015C
SPLAVER, H	PLYRS	1959
MARCOWKA, R	CHRGR	1885
YOUNG, C	KNGHT	1843
PETERSON, M	KNGHT	1772C
KUMRO, D	CHRGR	1756C
GRAFT, D	WESCM	1714
SAMELSON, C	PLYRS	1707*
DOBR, K	CHRGR	1680C



MOST IMPROVED PLAYERS



GERNES, L	TTY2	125
WILKINSON, D	FERMI	121
LI, T	ROYLS	112
HOSKINS, E	SIGND	110
SPLAVER, H	PLYRS	98
SAMELSON, C	PLYRS	91
THOMAS, J	GAMBT	90
FEDER, H	PAWNS	78
GAINES, I	FERMI	77
PEEL, A	IHARV	71
JOHNSTON, D	KEMPR	64



MATCH RESULTS



NORTH DIVISION

27-JAN-81	FEL-PRO		1.5	KEMPER INSURANCE		4.5
ROUND 7	BD	RATINGS	SCORE	RATINGS	SCORE	
1	MONZANI, A	1657 -8	0	LEONG, G	1919 8	1
2	FELDMAN, A	1531-20	0	SKUJINS, P	1574 20	1
3	FERNANDEZ, J	1420 0	0	MUENCH, D	0000 0	1
4	POKATILOFF, W	1394 8	.5	HUGHES, N	1519 -8	.5
5	WEITZ, R	1341-16	0	BLOEDOW, P	1435 16	1
6	POLO, L	1410 9	1	CUMMUTA, P	1161 -9	0
7	EDWARDS, B	0000 0	0	MUNKACSY, T	0000 0	1
8	CHIZHEVSKY, F	0000 0	1	KASPER, J	972 0	0 (FLPRO)

18-FEB-81	PROCON/UOP		4	FEL-PRO		2
ROUND 8	BD	RATINGS	SCORE	RATINGS	SCORE	
1	MICHLICH, F	0000 0	1	FELDMAN, A	1511 0	0
2	DMYTRENKO, S	1452 19	1	POKATILOFF, W	1402-19	0
3	MATIK, N	0000 0	0	WEITZ, R	1325 0	1
4	STUHLBARG, D	1399 12	1	THOMPSON, R	1217-12	0
5	CHEVERESAN, S	1307 0	1	ERICKSEN, K	0000 0	0
6	VUONG, H	0000 0	0	ELIKAN, F	0000 0	1
7	BAUMAN, W	0000 0	0	KASPER, J	972 0	1
8	TAGAMOLILA, C	0000 0	1	EDWARDS, B	0000 0	0
9	WONG, M	0000 0	1	ASHBROOK, R	0000 0	0
10	SCOTT, R	0000 0	0	LEE, D	0000 0	1

19-FEB-81		APEX TOOL WORKS			2.5		KITCHENS OF SARA LEE			3.5	
ROUND 8	BD	RATINGS	SCORE	RATINGS	SCORE	RATINGS	SCORE	RATINGS	SCORE	RATINGS	SCORE
1	DELHAFEN, A	1424	19	.5	ANDERSON, N	1808-19	.5				
2	WHITTENHALL, T	0000	0	0	SIVULA, B	1581	0	1			
3	WHITTENHALL; JR	1366-24		0	HANSON, D	1345	24	1			
4	O'DELL, D	0000	0	0	SZATMARY, F	1335	0	1			
5	WHITTENHALL; SR		0	1F	FORFIET		0	0F			
6	RACUTT, E		0	1F	FORFEIT		0	0F			
7	BOWERS, A	0000	0	0	RUNYARD, R	0000	0	1 (APEX)			
8	WHITTENHALL; SR	0000	0	1	RACUTT, E	1098	0	0 (APEX)			

25-FEB-81		APEX TOOL WORKS			1		ZENITH-GLENVIEW			5	
ROUND 9	BD	RATINGS	SCORE	RATINGS	SCORE	RATINGS	SCORE	RATINGS	SCORE	RATINGS	SCORE
1	DELHAFEN, A	1443	-5	0	SCHULMAN, R	1818	3	1			
2	WHITTENHALL, T	0000	0	0	NINKOVIC, S	1466	0	1			
3	O'DELL, D	0000	0	0	CONWAY, F	1426	0	1			
4	WHITTENHALL; JR	1342	0	1	SKULSKI, I	0000	0	0			
5	RACUTT, E	1098-10		0	WEIGAND, J	1308	10	1			
6	WHITTENHALL; SR	0000	0	0	SKINNER, S	1132	0	1			
7	RUNYARD, R	0000	0	1	SKINNER, S	1132	0	0			

25-FEB-81		SIGNODE			5		TELETYPE #2			1	
ROUND 6	BD	RATINGS	SCORE	RATINGS	SCORE	RATINGS	SCORE	RATINGS	SCORE	RATINGS	SCORE
1	STENSAKER, L	1529	25	1	KLEMM, J	1567-25	0				
2	HUFF, S	1389	30	1	SUE, H	1505-30	0				
3	FIGIEL, J	0000	0	1	ERICSON, D	1352	0	0			
4	PASTURCZAK, R	0000	0	0	GERNES, L	1404	0	1			
5	KLEIN, A	1379	0	1	CARPENTER, P	0000	0	0			
6	HOSKINS, E	1283	5	1	DALKA, C	904	-5	0			

11-MAR-81		KITCHENS OF SARA LEE			2.5		TELETYPE #2			3.5	
ROUND 9	BD	RATINGS	SCORE	RATINGS	SCORE	RATINGS	SCORE	RATINGS	SCORE	RATINGS	SCORE
1	ANDERSON, N	1789-36		0	KLEMM, J	1542	36	1			
2	SIVULA, B	1581	16	1	SUE, H	1475-16	0				
3	SZATMARY, F	1335-21		0	ERICSON, D	1352	21	1			
4	HANSON, D	1369-20		0	GERNES, L	1404	20	1			
5	CHAN, P	0000	0	.5	CARPENTER, P	1268	0	.5			
6	TATRO, B	0000	0	1	DALKA, C	899	0	0			

12-MAR-81		EXCALIBERS			1.5		KEMPER INSURANCE			4.5	
ROUND 9	BD	RATINGS	SCORE	RATINGS	SCORE	RATINGS	SCORE	RATINGS	SCORE	RATINGS	SCORE
1	BUERGER, E	2170-36		0	LEONG, G	1927	36	1			
2	SULLIVAN, J	1863-12		0	VANMEER, J	1928	18	1			
3	KARLOVICS, S	1799	0	1	MUENCH, D	0000	0	0			
4	BROTSOS, J	1589	0	.5	SKUJINS, P	1594	-1	.5			
5	BYCKOWSKI, M	1467-20		0	HUGHES, N	1511	20	1			
6	VOLPE, M	1320-18		0	JOHNSTON, D	1394	18	1			
7	AMPULSKI, J	980	-3	0	BLOEDOW, P	1451	3	1			

12-MAR-81		SIGNODE		1		MOTOROLA		5	
ROUND 9	BD	RATINGS	SCORE	RATINGS	SCORE	RATINGS	SCORE	RATINGS	SCORE
1	STENSAKER, L	1554	35	1	GONCHAROFF, N	1765-23	0		
2	HUFF, S	1419	-9	0	GREENSPAN, P	1655	6	1	
3	FIGIEL, J	0000	0	0	OGASAWARA, R	1599	0	1	
4	KLEIN, A	1379-11		0	HENNING, J	1582	7	1	
5	PASTURCZAK, R	0000	0	0	BLAZEVIK, C	1456	0	1	
6	HOSKINS, E	1288	-7	0	SUERTH, F	1596	7	1	
7	EVANS, V	1106	0	0	HEFFERNON, D	0000	0	1	
8	RIBALDO, D	0000	0	0	BROADUS, R	0000	0	1	

NEAR WEST DIVISION

18-FEB-81		WESCOM		5		CPC INTERNATIONAL		1	
ROUND 7	BD	RATINGS	SCORE	RATINGS	SCORE	RATINGS	SCORE	RATINGS	SCORE
1	GRAFT, D	1725	16	1	PARMETER, S	1631-16	0		
2	DAWSON, T	0000	0	0	ARMBRUSTER, F	1491	0	1	
3	RILEY, J	0000	0	1	BYAS, E	1330	0	0	
4	SINDEWALD, G	0000	0	1	WALKER, B	0000	0	0	
5	MEYER, D	0000	0	1	STEJSKAL, J	1300	0	0	
6	STELTON, N	0000	0	1	MUDE, J	1227	0	0	

25-FEB-81		BTL PLAYERS		3.5		WE GAMBITEERS		2.5	
ROUND 8	BD	RATINGS	SCORE	RATINGS	SCORE	RATINGS	SCORE	RATINGS	SCORE
1	SPLAVER, H	1948	5	1	STAMM, V	1601	-4	0	
2	SAMELSON, C	1658	26	1	KUBAL, C	1704-26	0		
3	WARD, C	1608	13	1	KIMBLER, C	1570-20	0		
4	THOMAS, G	1370-10		0	ALOJADO, M	1576	10	1	
5	ANDERSON, C	1540	0	.5	ALBRECHT, R	0000	0	.5	
6	DEAK, T	1469	0	0	PRESCOTT, F	0000	0	1	
7	DEWITT, G	1321	18	1	STOCK, R	1247-18	0		
8	MADISON	0000	0	1	LI, T	1350	0	0	(R)
OYLS)									
9	HOLLAND	0000	0	0	WESTON, P	1396	0	1	(R)
OYLS)									
(ROYLS)									
10	CLIFTON, J	0000	0	1	HILTNER, J	0000	0	0	(P)
LYRS)									

05-MAR-81		WE CHARGERS		3		ANL KNIGHTS		3	
ROUND 8	BD	RATINGS	SCORE	RATINGS	SCORE	RATINGS	SCORE	RATINGS	SCORE
1	WARREN, J	2026-11		0	BENEDEK, R	2128	11	1	
2	MARCOWKA, R	1868	17	1	PETERSON, M	1783-11	0		
3	KUMRO, D	1736	20	1	YOUNG, C	1860-30	0		
4	DOBR, K	1701-21		0	DEVER, D	1556	31	1	
5	RADAVICIUS, E	1610-24		0	KELLOGG, K	1585	24	1	
6	DISSEN, B	0000	0	1	COOVER, K	1356	0	0	
7	SWIDERSKI, M	1435-24		0	KINSELLA, G	1411	24	1	
8	WETTERSTEN, H	1372	2	.5	BURBA, K	1397	-2	.5	

10-MAR-81	INT'L HARVESTER	4.5	WESCOM	1.5	
ROUND 8	BD	RATINGS	SCORE	RATINGS SCORE	
1	PEEL, A	1669 27	1	GRAFT, D	1741-27 0
2	SATTERLEE, D	1669 0	1	RILEY, J	0000 0 0
3	PETERSON, W	1638 0	.5	MEYER, D	0000 0 .5
4	KANAS, W	1291 0	1	SINDEWALD, G	0000 0 0
5	RAVANAM, S	1201-12	0	STELTON, N	1373 12 1
6	MOTYCKA, R	0	1F	FORFIET	0 0F
7	OWENS	0000 0	0	MOTYCKA, R	1273 0 1 (I

24-MAR-81	ANL KNIGHTS	4	WE GAMBITEERS	2	
ROUND 9	BD	RATINGS	SCORE	RATINGS SCORE	
1	BENEDEK, R	2139 1	1	STAMM, V	1597 -1 0
2	YOUNG, C	1830 13	1	KUBAL, C	1678-13 0
3	KELLOGG, K	1609 0	0	ALBRECHT, R	0000 0 1
4	DEVER, D	1587 0	1	PRESCOTT, F	0000 0 0
5	KINSELLA, G	1435 0	1	BLAUMUELLER, F	0000 0 0
6	COOVER, K	1356-30	0	STOCK, R	1229 30 1

24-MAR-81	BTL PLAYERS	5	INT'L HARVESTER	1	
ROUND 9	BD	RATINGS	SCORE	RATINGS SCORE	
1	SPLAVER, H	1953 6	1	PETERSON, W	1638 -6 0
2	SAMELSON, C	1684 23	1	PEEL, A	1696-23 0
3	WARD, C	1621 17	1	SATTERLEE, D	1669-26 0
4	THOMAS, G	1360 0	0	HARTMAN, G	0000 0 1
5	ANDERSON, C	1540 8	1	MOTYCKA, R	1273 -8 0
6	DEWITT, G	1339 19	1	KANAS, W	1291-19 0
7	MADISON	0000 0	0	RAVANAM, S	1189 0 1
8	HILTNER, J	0000 0	1	GESIOR, A	1065 0 0

FAR WEST DIVISION

05-FEB-81	WHEATON COLLEGE	2	FERMILABS	4	
ROUND 9	BD	RATINGS	SCORE	RATINGS SCORE	
1	LEONARD, T	1802-17	0	WILKINSON, D	1884 17 1
2	WALHOUT, M	1800 -5	.5	GAINES, I	1737 5 .5
3	LUBENEC, S	1446-29	0	WALKER, R	1350 29 1
4	HAN, A	1506 8	1	MOORE, C	1228 -8 0
5	PAESE, M	0000 0	0	LASSILA, K	0000 0 1
6	CONGDON, B	1402 0	.5	GROSS, D	0000 0 .5

26-FEB-81	BTL ROYALS	4.5	AMOCO	1.5	
ROUND 9	BD	RATINGS	SCORE	RATINGS SCORE	
1	JAKSTAS, K	2038 3	1	MUIR, L	1595 -3 0
2	HOPPNER, P	1767 7	1	DEE, M	1485 -7 0
3	CLIFTON, J	0000 0	0	LEE, RJ	1611 0 1
4	ANDERSON, D	1651 12	1	SPANGLER, M	1474-12 0
5	LI, T	1350 10	.5	DZADZIC, P	1509-10 .5
6	WESTON, P	1396 0	1	LEE, J	0000 0 0

26-FEB-81 FERMILABS		3.5 ANL PAWNS			2.5		
ROUND 10	BD	RATINGS	SCORE	RATINGS	SCORE	RATINGS	SCORE
1	WILKINSON, D	1901	13	.5	STREETS, D	2110-13	.5
2	GAINES, I	1742	32	1	MIHAILOVICH, S	1903-22	0
3	WALKER, R		0	OF	GREEN, D		0
4	FISCHLER, M	1417	34	1	RENNER, T	1602-34	0
5	MOORE, C	1220	-5	0	BINGLE, J	1568	5
6	LASSILA, K	0000	0	1	FEDER, H	1441	0

10-MAR-81 WHEATON COLLEGE		4 WE KINGSMEN			2		
ROUND 11	BD	RATINGS	SCORE	RATINGS	SCORE	RATINGS	SCORE
1	LEONARD, T	1785-17		0	PARKER, L	1877	17
2	UNDERWOOD, H	1520	12	.5	ELLIOTT, W	1718	-8
3	WALHOUT, M	1795	14	1	BROZOVICH, J	1663-14	0
4	LUBENEC, S	1417	13	.5	BLAZIE, J	1632-13	.5
5	HAN, A	1514	24	1	SMITH, BR	1537-24	0
6	PAESE, M	0000	0	1	MCMAHIEL, K	0000	0

12-MAR-81 AMOCO		2 WHEATON COLLEGE			4		
ROUND 10	BD	RATINGS	SCORE	RATINGS	SCORE	RATINGS	SCORE
1	MUIR, L	1592-12		0	LEONARD, T	1768	12
2	LEE, RJ	1611-11		0	WALHOUT, M	1809	11
3	DEE, M	1478	26	1	UNDERWOOD, H	1532-26	0
4	SPANGLER, M	1462	20	1	LUBENEC, S	1430-20	0
5	LEE, J	0000	0	0	HAN, A	1538	0
6	NIMRY, T	0000	0	0	SCHIEFERSTEIN, A	0000	0

17-MAR-81 WE KINGSMEN		3 ANL PAWNS			3		
ROUND 12	BD	RATINGS	SCORE	RATINGS	SCORE	RATINGS	SCORE
1	PARKER, L	1894	12	.5	STREETS, D	2097-12	.5
2	ELLIOTT, W	1710	-8	0	MIHAILOVICH, S	1881	8
3	BROZOVICH, J	1649	16	.5	SUZUKI, W	1955-16	.5
4	HARRINGER, R	1601-18		0	GREEN, D	1669	18
5	BLAZIE, J	1619	19	1	RENNER, T	1568-19	0
6	SMITH, BR	1513	0	1	HOLM, B	0000	0

18-MAR-81 BTL ROYALS		1.5 ANL ROOKS			4.5		
ROUND 11	BD	RATINGS	SCORE	RATINGS	SCORE	RATINGS	SCORE
1	JAKSTAS, K	2041	19	1	KUCERA, D	1982-12	0
2	HOPPNER, P		0	OF	JACKSON, J		0
3	BHOJWANI, C	1750-14		0	BERRY, G	1879	10
4	ANDERSON, D	1663	0	0	ALFARO, C	0000	0
5	LI, T	1360	18	.5	WILSON, R	1716-12	.5
6	WESTON, P	1396	-8	0	BAURAC, D	1649	8
7	CLIFTON, J	0000	0	0	HOPPNER, P	1774	0

OYLS)

23-MAR-81 ANL ROOKS		6 WHEATON COLLEGE			0		
ROUND 12	BD	RATINGS	SCORE	RATINGS	SCORE	RATINGS	SCORE
1	BERRY, G	1889	10	1	LEONARD, T	1780-16	0
2	JACKSON, J	1900	12	1	WALHOUT, M	1820-17	0
3	ALFARO, C	0000	0	1	LUBENEC, S	1410	0
4	WILSON, R	1704	8	1	HAN, A	1538-12	0
5	BAURAC, D	1657	0	1	LARSON, G	0000	0
6	DECMAN, S	1532	0	1	SCHIEFERSTEIN, A	0000	0



RATINGS



NAME	TEAM	W	L	D	RATING
ABE, P	APEX	0	3	0	0000?
ABEL, W	PRCON	0	0	1	0000?
AGEE, L	STAND	2	1	0	0000?
AGPAWA, T	ZENTH	1	1	1	1620
ALBRECHT, R	GAMBT	3	0	2	0000?
ALFARO, C	ROOKS	4	0	1	0000?
ALLEN, T	APEX	1	0	0	0000?
ALOJADO, M	GAMBT	3	2	2	1586
AMPULSKI, J	EXCAL	2	2	0	977*
ANDERSON, C	PLYRS	2	1	2	1548#
ANDERSON, D	ROYLS	6	2	2	1663
ANDERSON, N	SARAL	3	4	1	1753
ANDRESEN, T	SEARS	2	0	0	1883
ANSARI, N	PRCON	0	2	0	1542*
APPELMAN, E	KNGHT	0	1	0	1623
ARMBRUSTER, F	CPCIL	3	2	0	1491*
ASHBROOK, R	FLPRO	0	1	0	0000?
ATKINSON, J	FNBK	0	1	0	0000?
BALASE, E	SEARS	1	0	0	1435#
BARBER, H	KEMPR	2	3	0	1477*
BARRETT, B	MTRLA	1	0	0	0000?
BAUMAN, W	PRCON	0	1	0	0000?
BAUMANN, W	PRCON	0	1	0	0000?
BAURAC, D	ROOKS	6	1	2	1657
BENEDEK, R	KNGHT	5	1	1	2140
BERRY, G	ROOKS	7	1	1	1899C
BHOJWANI, C	ROYLS	5	2	1	1736
BIESZKI, B	MTRLA	2	0	0	0000?
BINGLE, J	PAWNS	2	1	1	1573C
BLAUMUELLER, F	GAMBT	1	3	0	0000?
BLAZEVIK, C	MTRLA	3	0	0	1456#
BLAZEVIK, CH	MTRLA	1	0	0	0000?
BLAZIE, J	KNGMN	4	3	3	1638
BLOEDOW, P	KEMPR	3	1	1	1454*
BOWERS, A	APEX	1	4	0	0000?
BRIONES, M	PRCON	3	2	0	1612*
BROADUS, R	MTRLA	1	1	0	0000?
BROSIG, A	SIGND	2	0	0	1677
BROTSOS, J	EXCAL	5	2	1	1589C
BROZOVICH, J	KNGMN	2	6	2	1665
BRUNER, B	CPCIL	0	1	0	0000?
BUCHANAN, R	FNBK	0	1	0	1556
BUERGER, E	EXCAL	6	1	0	2134
BUJWID	HARZA	2	0	1	1548*
BURBA, K	KNGHT	1	2	2	1395
BYAS, E	CPCIL	1	4	0	1330*
BYCKOWSKI, M	EXCAL	2	2	0	1447
CAMPBELL, C	STAND	0	1	0	0000?
CARPENTER, P	TTY2	3	3	2	1268#
CARUS, B	TTY	4	1	0	1567*
CATTRON, W	AMOCO	0	1	1	0000?

CHAN, H	SEARS	2	1	0	1722
CHAN, P	SARAL	1	2	3	1603#
CHEVERESAN, S	PRCON	3	2	0	1307*
CHIZHEVSKY, F	FLPRO	1	0	0	0000?
CHOO, Y	STAND	1	0	1	0000?
CHRISTIAN, R	TTY	2	1	0	1633*
CISKO, G	FERMI	0	1	0	0000?
CLIFTON, J	ROYLS	1	2	0	0000?
COMROE, R	MTRLA	1	0	0	1279*
CONGDON, B	CRSDR	0	2	1	1402*
CONWAY, F	ZENTH	2	2	1	1426
COOVER, K	KNIGHT	2	6	1	1326
COX, M	ALUMN	1	0	0	1790*
CUMMTA, P	KEMPR	0	1	0	0000?

NAME	TEAM	W	L	D	RATING
CUMMUTA, P	KEMPR	5	1	0	1152#
CZARMATA	PRCON	0	1	0	0000?
CZERNIECKI	ALUMN	1	1	0	2122
DALEY, J	PAWNS	1	1	0	1364
DALKA, C	TTY2	2	7	0	899*
DARGIS, R	ALUMN	0	1	0	1564
DAWSON, T	WESCM	0	6	0	0000?
DEAK, T	PLYRS	2	4	1	1469*
DECMAN, S	ROOKS	6	1	1	1532
DEE, M	AMOCO	1	6	2	1504
DELEON, J	MTRLA	1	0	0	0000?
DETMERS, J	ROYLS	1	1	0	0000?
DEVER, D	KNIGHT	4	1	3	1587
DEWITT, G	PLYRS	4	2	0	1358
DIBERARDINO, D	APEX	1	4	0	1087#
DISSEN, B	CHRGR	4	0	0	0000?
DMYTRENKO, S	PRCON	2	5	0	1471
DOER, K	CHRGR	4	3	0	1680C
DONOVAN, E	PRCON	1	0	0	0000?
DORFMAN, L	PRCON	1	0	1	0000?
DRAGEL, G	PAWNS	1	1	1	1298
DULAY	PRCON	0	1	0	0000?
DUNWORTH, J	ALUMN	1	1	0	1825
DURKEE, D	TTY	7	0	1	1771*
DYER, G	PLYRS	4	1	0	0000?
DZADZIC, P	AMOCO	1	1	3	1499*
DZIEDZIC	IHARV	1	0	0	0000?
EDWARDS, B	FLPRO	0	2	0	0000?
EDWARDS, S	EXCAL	2	1	0	1253*
EHRlich, E	WESCM	0	1	0	0000?
ELIKAN, F	FLPRO	2	3	0	0000?
ELLIOTT, W	KNGMN	0	1	2	1702C
ELSHEIMER, B	CRSDR	3	2	0	0000?
ERICKSEN	FLPRO	0	1	0	1131*
ERICKSEN, K	FLPRO	0	1	1	0000?
ERICKSON, D	TTY2	1	0	0	0000?
ERICSON, D	TTY2	3	1	0	1373#
EVANS, V	SIGND	2	3	0	1106#
EWARDS, B	FLPRO	0	1	0	0000?
FABIJONAS, R	ALUMN	2	0	0	1825C
FAJKUS, J	CHRGR	3	1	0	1607C
FEDER, H	PAWNS	3	1	0	1441

FEILER, K	FNBK	0	1	0	1797
FELDMAN, A	FLPRO	1	4	2	1511*
FERNANDEZ, J	FLPRO	1	6	0	1420*
FIGIEL, J	SIGND	1	2	0	0000?
FISCHLER, M	FERMI	2	6	0	1451*
FOERSTER, G	MTRLA	1	0	0	0000?
FOGELSON, M	ZENTH	0	2	0	1293
GAFFIGAN, T	FNBK	0	2	1	1651
GAINES, I	FERMI	6	2	1	1774
GALVIN, J	EXCAL	0	1	0	1543
GECZY, P	SIGND	1	1	0	0000?
GERNES, L	TTY2	7	2	0	1424*
GESIOR, A	IHARV	0	3	0	1065#
GIBBS	FNBK	0	2	0	1921
GILMER, J	TTY	0	2	1	1448
GLENN, S	FNBK	1	0	0	0000?
GOLLA, R	SEARS	0	1	1	1842
GONCHAROFF, N	MTRLA	2	5	1	1742C
GRAFT, D	WESCM	3	3	1	1714
GREEN, D	PAWNS	5	1	2	1687
GREEN, H	EXCAL	2	2	0	1550
GREENSPAN, P	MTRLA	3	0	2	1661C
GROSS, D	FERMI	1	1	1	0000?

NAME	TEAM	W	L	D	RATING
HAN, A	CRSDR	5	2	1	1526*
HANSON, D	SARAL	3	4	1	1349*
HARRINGER, R	KNGMN	2	2	1	1583
HARTMAN, G	IHARV	3	0	0	0000?
HEFFERNON, D	MTRLA	2	0	1	0000?
HENNING, J	MTRLA	6	1	0	1589C
HILL, C	FERMI	0	2	2	1683*
HILTNER, J	PLYRS	1	1	0	0000?
HOGENDORP, W	FNBK	1	2	0	0000?
HOLLAND	PLYRS	0	3	0	1282#
HOLM, B	PAWNS	0	1	1	0000?
HOPNER, P	ROYLS	4	3	3	1774
HOSKINS, E	SIGND	5	3	0	1281*
HOWANSKY, A	MTRLA	1	0	0	0000?
HUFF, S	SIGND	3	4	0	1410
HUGHES, N	KEMPR	3	0	2	1531*
HUPKA, S	SIGND	0	1	0	0000?
JACKLIN	IHARV	1	1	0	1189*
JACKSON, J	ROOKS	4	4	1	1912C
JACOBS, N	TTY	5	0	3	1858
JAKSTAS, K	ROYLS	6	1	3	2060
JOELSON, A	MTRLA	1	2	0	0000?
JOHNSTON, D	KEMPR	5	0	1	1412*
KANAS, W	IHARV	3	4	0	1272
KARGE, W	KEMPR	1	0	0	1211*
KARLOVICS, S	EXCAL	5	2	0	1799
KARLSSON, T	ZENTH	1	1	0	1123#
KARUS, B	TTY	1	0	0	0000?
KASPER, J	FLPRO	1	4	0	972*
KELLOGG, K	KNGHT	4	4	0	1609
KIMBLER, C	GAMBT	2	2	0	1550
KINSELLA, G	KNGHT	4	0	0	1435
KLEIN, A	SIGND	1	3	0	1368
KLEIN, M	STAND	0	1	2	0000?

KLEMM, J	TTY2	4	5	0	1578
KOJAK, A	KNGMN	0	1	0	0?
KOLENDA	HARZ1	1	1	0	1659*
KOZACKY, J	PRCON	0	0	1	1800
KROL, K	PRCON	0	1	0	0000?
KROUSHL, J	PRCON	0	0	1	0000?
KUBAL, C	GAMBT	3	5	0	1665
KUCERA, D	ROOKS	0	1	0	1970
KUMRO, D	CHRGR	5	1	0	1756C
LACHAPELLE, G	IHARV	1	0	0	1174#
LAMBERT, E	MTRLA	0	0	0	0000?
LARSON, G	CRSDR	0	1	0	0000?
LASSILA, K	FERMI	2	2	2	0000?
LATIMER, E	SEARS	3	0	0	1962
LEE, D	FLPRO	1	0	0	0000?
LEE, J	AMOCO	1	4	0	1213#
LEE, REGGIE	GAMBT	0	2	0	0000?
LEE, RJ	AMOCO	1	7	1	1600
LEMS, W	SEARS	2	1	0	1565
LEONARD, T	CRSDR	2	6	3	1764*
LEONG, G	KEMPR	6	2	0	1963
LESNER, K	SIGND	1	2	0	0000?
LI, T	ROYLS	4	2	4	1378*
LICHT, J	GAMBT	0	1	0	1422
LITVINAS, A	ALUMN	0	1	0	1440
LOPRESTI, P	SIGND	0	1	0	0000?
LUBENEC, S	CRSDR	3	6	2	1410*
MADISON	PLYRS	3	4	0	1398#
MAGEE, D	STAND	0	1	0	0000?
MANZKE, R	TTY	4	2	0	0000?
MANZKE, R	TTY	0	2	0	0000?

NAME	TEAM	W	L	D	RATING
MARCOWKA, R	CHRGR	5	1	0	1885
MATHEWS, J	ALUMN	0	0	0	0000?
MATIK, N	PRCON	0	1	0	0000?
MAY, G	WESCM	0	1	0	1187*
MCAHEL, K	KNGMN	1	4	0	0000?
MEISINGER	GAMBT	0	2	0	0000?
MEYER, D	WESCM	1	2	1	0000?
MICHLICH, F	PRCON	3	1	1	0000?
MICKLICH, F	PRCON	0	1	1	0000?
MIGNERON, R	FERMI	0	2	0	0000?
MIHAILOVICH, S	PAWNS	6	1	2	1889C
MONSER, E	TTY	1	0	0	0000?
MONZANI, A	FLPRO	2	3	0	1649*
MOORE, C	FERMI	0	2	0	1215*
MORGAN	STAND	0	1	0	0000?
MOSHER, G	KEMPR	0	2	0	1192#
MOTYCKA, R	IHARV	3	4	1	1265
MUDDE, J	CPCIL	0	5	1	1227
MUENCH, D	KEMPR	1	2	0	0000?
MUIR, L	AMOCO	1	7	1	1580
MUNKACSY	KEMPR	2	0	0	0000?
MUNKACSY, T	KEMPR	1	0	0	0000?
MUNOZ, R	HARZ1	1	2	0	1679
NAIL, D	STAND	0	1	0	0000?
NEUMARK, J	MTRLA	3	0	3	1741C

NIMRY, T	AMOCO	0	5	0	0000?
NINKOVIC, S	ZENTH	2	4	2	1466*
NURME, U	HARZ1	1	1	1	1933*
O'BRIEN, D	PRCON	1	0	0	0000?
O'DELL, D	APEX	1	3	0	0000?
O'NEAL, J	WESCM	0	2	0	0000?
OELHAFEN, A	APEX	0	5	2	1438#
OGASAWARA, R	MTRLA	5	3	0	1599C
OSBORNE, W	STAND	0	1	0	0000?
OWENS	IHARV	0	4	0	0000?
PAESE, M	CRSDR	2	1	2	0000?
PANFIL, J	APEX	0	1	0	0000?
PARKER, L	KNGMN	1	2	3	1906
PARMETER, S	CPCIL	1	3	1	1615
PASTURCZAK, R	SIGND	1	3	0	0000?
PASTURCZAK, RJ	SIGND	2	2	0	1396
PEEL, A	IHARV	4	2	0	1673*
PETERSON, M	KNGHT	3	3	0	1772C
PETERSON, W	IHARV	1	4	3	1632*
PETTY, B	AMOCO	0	1	0	0000?
PFEFFER, D	ROYLS	1	0	0	1492
PFEFFER, H	FERMI	0	1	0	1447
PLANT, B	KNGMN	1	0	0	1615#
POKATILOFF, W	FLPRO	0	3	4	1383*
POLO, L	FLPRO	1	0	0	1419#
POPPS, W	WESCM	2	2	0	1580*
PRESCOTT, F	GAMBT	3	2	0	0000?
PUSKAS	ZENTH	0	1	0	0000?
RACUTT, E	APEX	0	7	1	1088#
RADAVICIUS, E	CHRGR	3	2	2	1586
RATAJCZAK, J	SARAL	0	5	0	1172*
RAVANAM, S	IHARV	1	2	1	1189#
RENNER, T	PAWNS	2	3	0	1549
REYES, R	SEARS	3	0	0	2312
RIBALDO, D	SIGND	1	2	0	0000?
RILEY, J	WESCM	1	2	0	0000?
ROBINSON, B	ZENTH	0	1	0	1313#
ROD, R	STAND	0	1	0	0000?
ROSEN, J	KNGMN	2	0	1	1594
RUNYARD, R	APEX	2	1	0	0000?

NAME	TEAM	W	L	D	RATING
SAMDY, A	HARZA	1	0	0	1927#
SAMELSON, C	PLYRS	5	2	1	1707*
SANDY	HARZA	0	1	0	0000?
SAPP, G	STAND	0	1	0	0000?
SATTERLEE, D	IHARV	3	4	0	1643
SCHIEFERSTEIN, A	CRSDR	1	2	0	0000?
SCHORR, I	WESCM	0	1	0	0000?
SCHULMAN, R	ZENTH	5	2	0	1821
SCHWARTZ, S	SEARS	1	0	0	1697C
SCOTT, R	PRCON	0	2	0	0000?
SELIN, E	FNBK	0	2	0	0000?
SHAFF, R	KNGMN	1	2	0	1493
SHAFFER, R	STAND	0	1	0	0000?
SHAPIRO, M	FLPRO	2	2	1	0000?
SHIRKEY, L	ROOKS	6	0	0	1559C
SHUKLA, P	TTY2	2	3	0	1312*
SINCLAIR, L	HARZA	1	0	0	0000?

SINDEWALD, G	WESCM	2	3	0	0000?
SIVULA, B	SARAL	3	1	4	1597
SKINNER, S	ZENTH	3	5	0	1132#
SKUJINS, P	KEMPR	5	1	2	1593*
SKULSKI, I	ZENTH	2	3	0	0000?
SMITH, BR	KNGMN	2	5	2	1513
SMITH, M	FNRNK	1	2	0	1419*
SOBUN, J	KNGMN	1	1	0	1545
SOPYRCH, T	STAND	2	1	0	0000?
SPANGLER, M	AMOCO	3	4	1	1482*
SPLAVER, H	PLYRS	7	0	0	1959
STAMM, V	GAMBT	2	5	1	1596C
STEJSKAL, J	CPCIL	1	4	1	1300
STELTON, N	WESCM	5	2	0	1385#
STENSAKER, L	SIGND	4	4	0	1589
STOCK, R	GAMBT	2	4	1	1259#
STREETS, D	PAWNS	6	0	3	2085
STUHLBARG, D	PRCON	4	1	2	1411
STYS, A	PRCON	1	1	2	1870
SUE, H	TTY2	5	6	0	1459
SUERTH, F	MTRLA	1	0	1	1603#
SULLIVAN, J	EXCAL	3	1	0	1851C
SUZUKI, W	PAWNS	0	0	1	1939
SWIDERSKI, M	CHRGR	3	1	3	1411
SZATMARY, F	SARAL	3	5	1	1314
TAGAMOLILA, C	PRCON	1	0	0	0000?
TATRO, B	SARAL	1	6	0	949#
TEGEL, F	TTY	6	1	1	2026C
THOMAS, G	PLYRS	3	3	0	1360*
THOMAS, J	GAMBT	4	1	0	1485
THOMPSON, R	FLPRO	0	3	0	1205#
THURESON, G	KEMPR	0	1	0	0000?
TOLLENTINO, E	AMOCO	0	1	0	0000?
TOLSON, M	MTRLA	1	2	1	1145#
UHERKA, K	BSHPS	0	1	0	1383
UNDERWOOD, H	CRSDR	1	6	1	1506*
URBAS, B	CPCIL	0	2	0	1513
VANMEER, J	KEMPR	1	0	0	1946*
VICK, H	MTRLA	1	2	0	1497*
VITERI, M	PRCON	1	2	0	1536
VOGEL, T	TTY	1	0	0	0000?
VOLPE, M	EXCAL	3	1	0	1302
VUKSANOVICH, D	HARZA	1	1	0	0000?
VUONG, H	PRCON	0	1	0	0000?
WAGNER, R	TTY	5	1	2	1678*
WALHOUT, M	CRSDR	6	3	2	1803
WALKER, B	CPCIL	0	3	1	0000?
WALKER, R	FERMI	2	5	1	1379

NAME	TEAM	W	L	D	RATING
WALSH, W	PAWNS	1	2	1	1517
WARD, C	PLYRS	4	3	0	1638C
WARREN, J	CHRGR	3	2	1	2015C
WEIGAND, J	ZENTH	2	3	0	1318*
WEITZ, R	FLPRO	3	2	0	1325*
WENTLING	STAND	0	0	1	0000?
WESTON, P	ROYLS	6	4	1	1388

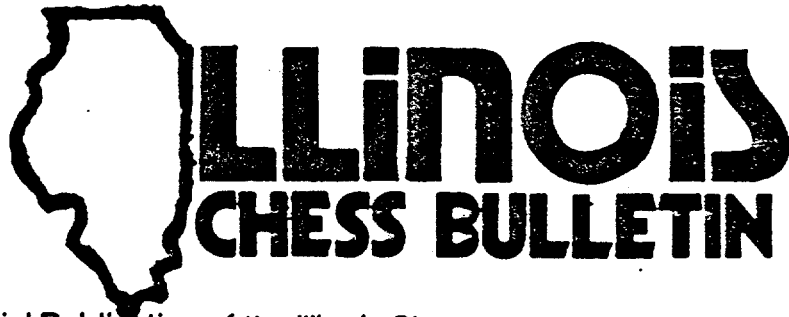
WETTERSTEN, H	CHRG	2	0	1	1374
WHITTENHALL, T	APEX	0	5	0	0000?
WHITTENHALL; JR	APEX	2	5	0	1342‡
WHITTENHALL; SR	APEX	1	6	0	1039‡
WHITTMAN, R	SIGN	0	1	0	0000?
WIENCEK, T	ROOKS	1	1	0	0000?
WILKINSON, D.	FERMI	5	1	3	1914*
WILSON, A	ALUMN	2	0	0	1573
WILSON, R	ROOKS	3	2	5	1712C
WONG, M	PRCON	1	0	0	0000?
WONG, P	EXCAL	4	1	0	1980
YOUNG, C	KNIGHT	4	2	1	1843
ZUERCHER, J	TTY	3	1	1	1376‡

? - UNRATED

‡ - 5 TO 9 GAMES

* - 10 TO 24 GAMES

C - CENTURY CLUB MEMBER



Official Publication of the Illinois Chess Association, a USCF Affiliate

The ILLINOIS CHESS BULLETIN is published 6 times per year.

The Illinois Chess Association is a not-for-profit organization dedicated to the promotion of chess in Illinois. Magazine features include up-to-date reporting on chess tournament activity in Illinois, with many games annotated by Illinois chess masters and experts. The ILLINOIS CHESS BULLETIN gives advance notice for major chess tournaments in our state and provides a list of chess clubs.

SUBSCRIBE TO THE ILLINOIS CHESS BULLETIN

Subscription to the ILLINOIS CHESS BULLETIN includes a 1 year membership in the Illinois Chess Association, an affiliate of the U.S. Chess Federation. As well as publishing the ILLINOIS CHESS BULLETIN, the ICA organizes chess tournaments in Illinois and serves as a federation of chess clubs and other chess organizations throughout the state. ICA officers donate their time; no one is paid.

During the last 2 years since Helen Warren became Editor for the ICB, the ILLINOIS CHESS BULLETIN, as the premier state chess publication in the United States, has received numerous chess journalism awards. By subscribing to the ICB, you are not only assuring yourself of the best chess news coverage for Chicago and Illinois. You are also helping to support chess in Illinois.

Regular 1 year subscription is \$5. Patron Membership is \$25.

Send subscriptions to :

HELEN WARREN, EDITOR, ILLINOIS CHESS BULLETIN, P.O. BOX 70,
WESTERN SPRINGS, ILLINOIS 60558

NAME _____

ADDRESS _____

CITY & ZIPCODE _____

ARE YOU A USCF MEMBER ? _____ RATING _____

Please make your check payable to the Illinois Chess Association.

\$5 REGULAR MEMBERS \$25 PATRON