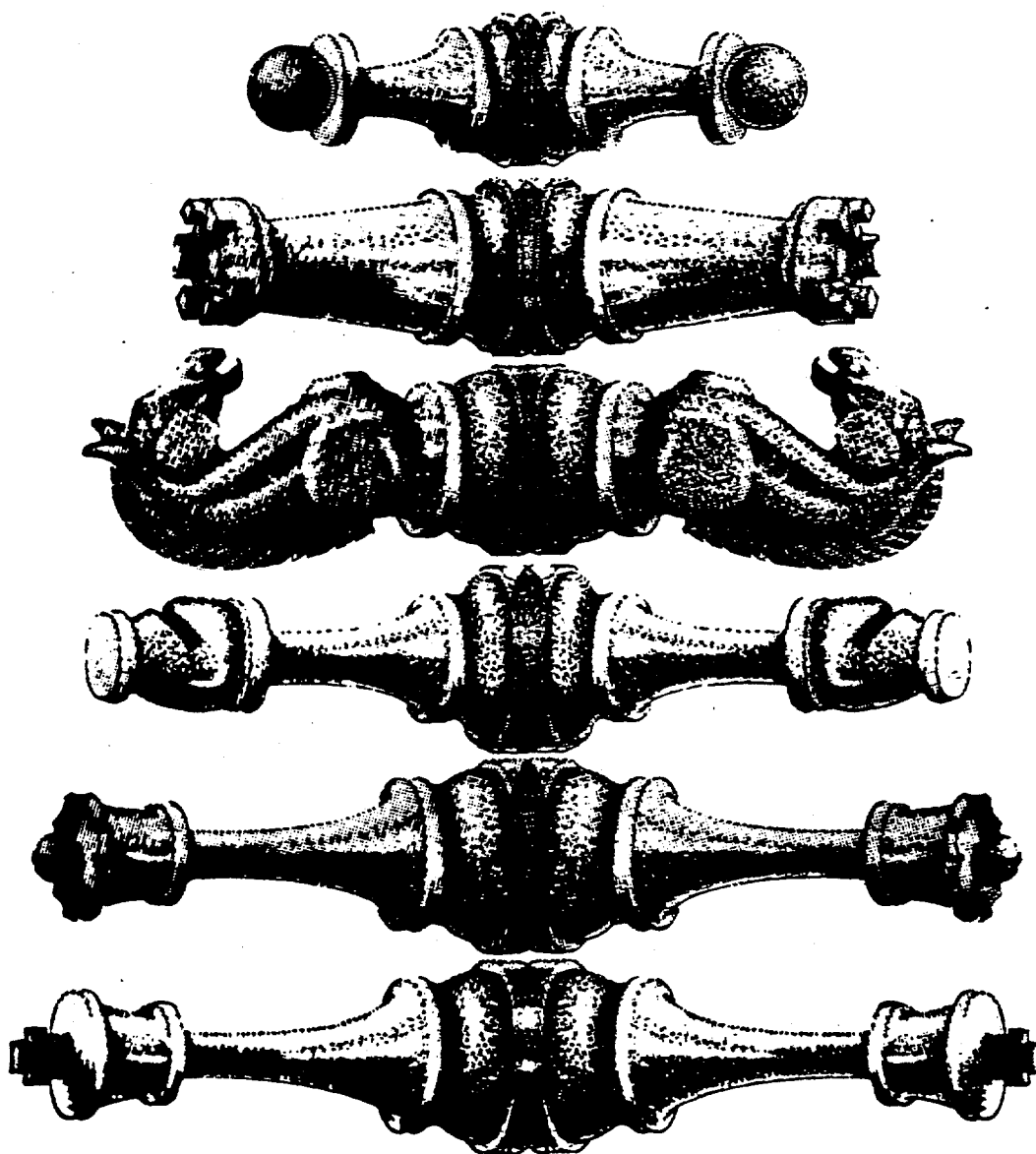


# CHICAGO INDUSTRIAL CHESS LEAGUE BULLETIN

VOLUME 24, NUMBER 1, OCTOBER 1980



**USCF AFFILIATE  
FOUNDED 1957**





CONTENTS

PAGE

GRAFFITI.....4  
 CICL SIMULTANEOUS DISPLAY CALL  
 FOR VOLUNTEERS.....5  
 CHESS NEWS AND VIEWS.....6  
 KARPOV KAYOS KOMPUTERS.....7  
 JOIN THE USCF!.....8  
 OPEN LETTER TO CICL PLAYERS.....9  
 CICL OFFICERS, 1980-81.....13  
 CICL MEETING OF AUGUST 21, 1980 MINUTES....14  
 1980 NATIONAL OPEN ANNOUNCEMENT.....16  
 CICL INCOME-EXPENSE STATEMENT, 1979-80....17  
 PLAYOFF ROUND-BY-ROUND RESULTS.....20  
 TEAM LISTINGS.....23  
 ILLINOIS CHESS BULLETIN ANNOUNCEMENT.....37  
 STATEMENT OF CHARGES.....39



EDITOR.....Don Graft  
 COLUMNIST.....Helen Warren  
 GAMES EDITOR.....Dave Baurac  
 GRAPHICS.....Larry Kwiatek  
 STATISTICS.....Paul Weston  
 Joe Brozovich

# GRAFFITI

When I heard that no editor could be found for the CICL BULLETIN, I felt that, according to the dictates of my chess conscience, I was required to volunteer for the job. My offer was accepted and I now find myself in the position of being your editor.

My main goal for the Bulletin will be to make it less a special-purpose organ of the CICL designed to communicate results, ratings, and official business, and more a general-interest chess magazine. Of course, the emphasis will still be on the CICL, but by widening its scope, the Bulletin will, it is hoped, attract a wider readership outside the CICL, thereby providing greater visibility for the CICL.

In this issue, we have columns by Helen Warren and Dave Baurac, and art by Larry Kwiatek. Helen is vice-president/treasurer of the Chess Journalists of America (CJA) and edits both the APCT NEWS BULLETIN, for over 1100 postal chess players, and the ILLINOIS CHESS BULLETIN, vehicle for the Illinois Chess Association. Helen is tournament director for APCT chess tournaments, chairman of the USCF prison chess committee, and a regional vice-president and delegate of the USCF. Helen is a long-time member of the Gompers Park Chess Club, and presently a member of the Oak Park Chess Club. She is one of the founders of the Illinois Chess Association. The ILLINOIS CHESS BULLETIN, with Helen at the helm, recently received national recognition with a grant from the American Chess Foundation and was judged the BEST STATE CHESS PUBLICATION in the U.S. The ILLINOIS CHESS BULLETIN also received ten other awards for individual columns and technical merit. Players in the CICL will know Helen best as Jim Warren's wife. With her vast chess activity and experience, it is no surprise that Helen is a very outspoken woman, and that she should often have significant things to say. For that reason, I offered Helen the opportunity to write a regular column and she has kindly accepted. Her first offering appears in this issue. Strangely enough, her first article, extolling the virtues of chess politics in England, strikes close to my heart, for I have always maintained an identical view based on my residence in England during 1968-1976. Perhaps the relative malaise in U.S. chess is only a symptom of the general deterioration of the U.S.

Larry Kwiatek is a graphic designer at Rockwell-Wescom, a manufacturer of telecommunications systems. He has a Bachelor of Fine Arts degree from the School of the Art Institute in Chicago and has had his work exhibited in many foreign countries. He has won numerous awards for his work. Larry has agreed to supply cover art for the CICL BULLETIN. His first offering is on the cover of this issue. It is a motif which one likes more at each viewing. To me, the tree structure denotes the wished-for growth of chess. Or, the structure is a ribcage, denoting the protector of the vital organs of chess. But then, I am not an art critic. Not necessarily every issue, Larry will

submit a piece of chess art for use on the cover. We will make available high-quality reprints if there is any demand for them.

Dave Baurac is a veteran member of the Argonne Rooks, and now the team captain of the Argonne Bishops. He is a past editor of the CICL BULLETIN. Dave has volunteered to contribute a games column. Readers will agree that his column in this issue is very well prepared (for which, as editor, I am especially grateful). Dave presents several games from the current world championship cycle and other games of interest. To make Dave's effort a success, it is necessary that the readers swallow their pride, dispense with procrastination, and send him their games. Games from all levels of play are instructive. Don't feel that your game is "not good enough".

I intend to contribute regular articles (again, not necessarily every issue) on the subject of computers and chess. My first offering will appear in the next issue. If any interest is detectable, a problem ladder will be formed. But most important, the Bulletin must be open to its readers. We will therefore publish virtually anything sent to us, so long as it is chess related and written in the English language. We will accept amusing stories and chess anecdotes, complaints or chess-political statements, letters to the editor, offers to write regular columns, match and tournament reports, etc., etc. We would like to publish photographs on an experimental basis to see if the production process can accommodate them, so send in any chess-related photos you may have. We will take good care of any items submitted and return them promptly. To increase the chances of acceptance of your material, please submit camera-ready, typewritten copy (no xerox copies please). Use single spacing and either one or two columns. The deadline for each issue is the 20th of the previous month. --

Individual subscriptions to the Bulletin can be obtained by sending \$4.50 to Jim Brotsos (see list of CICL officers elsewhere in this issue for his address).

Den Graft



CICL SIMULTANEOUS DISPLAY  
CALL FOR VOLUNTEERS



There will be a simultaneous display given at the Fox Valley Shopping Mall on October 18 and 19, 1980. Any high-rated players interested in participating are encouraged to contact Paul Weston at 983-4090 (work) or 898-7683 (home). Paul needs your help to put on a good simultaneous display.

# chess news & views

by Helen Warren

If the future of American chess rests with its youth, we may be headed for some dry days. Joel Benjamin, highly touted New York wunderkind, finished dismally in the World Junior Championship just completed in Dortmund, Germany. So bad was his showing that USCF press releases refrained from giving his score or final position. The winner was no surprise. Garry Kasparov of the Soviet Union again proved he had earned the GM title recently won by him. He finished with 10½-2½, fully a point and a half ahead of Britain's Nigel Short.

Nigel Short? Yes, he bears watching for more than one reason. He is the product of the British chess renaissance that started a decade ago and is now bearing fruit. The cognoscenti say that Short needs much more seasoning before he will reach the very top ranks, but if his performance in the World Junior is any hint of what's to come, the outlook is promising for the Union Jack.

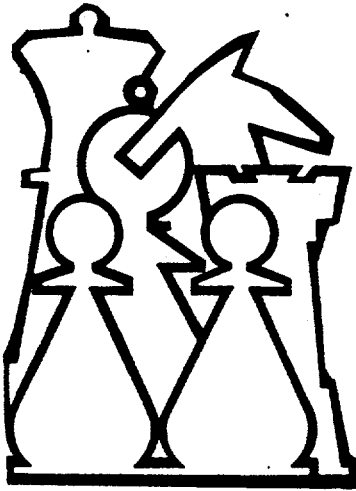
England's youth program is a mystery to most Americans; it merits more than passing mention. When Korchnoi was on tour last year in England he predicted that England would become the next major chess power. His reason? England's solid youth program. Botvinnik, incidentally, said much the same thing without visiting England; he played the games of British young masters and was more than a little impressed. While we know some of the reasons for Soviet excellence in chess, the sudden emergence of strong British players startles some of us. It should not. Tell me how a man spends his money and I'll tell you what he considers important. The Soviets spend freely on chess; so does the British Chess Federation, the organizational equivalent of the USCF in England.

The British Chess Federation sponsors a strong youth program with no fewer than six of its top echelon officials engaged in nothing but junior chess activity: organizing, coaching, and developing chess talent in the bud. Trainers in each of England's four "unions" (a

rough equivalent to the twelve USCF regional clusters of states) regularly "scout" for promising youngsters. Soon, as the program matures and expands, these coaches, experts and masters will be increased in number and will serve as paid professionals. Talent exists not only in populated areas, but in the hustings as well--and these programs go into the remote areas as well as to London and Birmingham. A structure of qualifying tournaments on the local level produces players for under-21, under-18, under-16, and under-14 national championships. What has all this accomplished?

Well, it's produced a lot of chess playing. First and most important chess has become a popular recreation and a respected skill. How popular on the higher levels? Consider this: no nation has a greater number of FIDE rated juniors than England--NOT EVEN THE SOVIET UNION. Many of these young players will advance in world class play and eventually compete in force with the established world class players of Eastern Europe. Second, the employment of masters, chess pros who love the game enough to spend their lives with it, has been spurred with this national federation commitment.

Is there anything to learn from this? Only if we choose to emphasize this aspect of the game--junior chess. Junior chess means chess in the schools and up to now chess in schools hasn't been given a chance to prove itself. It has existed on ill-funded volunteerism of an amateur sort and has suffered for it. Our finest players are products of the chess club and the coffee house, sometimes of private tutoring. They are not products of the schools. Or at least their chess isn't. Should the USCF spend money for scholastic chess? That's a matter for serious debate. It entails establishing priorities for our USCF dollars and the possible expenditure of funds in an area foreign to USCF, at least on a massive scale. The real question may be a harder one: is it a matter of money or a question of changing values about the nature of leisure time and its importance in our lives?



KARPOV  
KAYOS KOMPUTERS,  
KOLLECTS THE  
KASH  
IN  
KISSINGEN ....

A Report on the Grandmaster Quadrangular Tournament,  
& Various Other Happenings, At Bad Kissingen 1980  
by World Champion Anatoly Karpov

At this, the fourth tournament to have been held in Bad Kissingen (the same resort hamlet which hosted the famous 1928 event), the desires of both the new West German Chess Federation and the grandmaster participants coincided. Interest in chess had fallen off among the youth of West Germany in the 'Sixties; it was deemed necessary to hold international tournaments, with "big-name" grandmasters participating, in order to bring them back. It's a tried-and-true approach, and the tournament at Bad Lauterberg 1977 had already been some indication that this sort of "chess politics" gives good results.

For two of its participants - Boris Spassky and Robert Huebner - this tournament would be the last serious training before their quarterfinal Candidates' matches - although in fact they each "trained" in somewhat differing fashion. We received the impression from Spassky that he was really more or less "exercising" himself, even though his will-to-win only flagged visibly in the last two rounds. Spassky acknowledged that he was only gradually involving himself in the preparations for his match with Portisch, a match that has so far been unable even to find itself a site. Spassky wasn't particularly worried about that, either, as far as I could see. Evidently, he knows the truth in the footballers' proverb: "There will be a match, whatever the weather" - sooner or later, he seems to feel, a site would be found. (By this time, it appears the Spassky - Portisch match will not start until April, instead of March, and the most likely site will be the Netherlands\*.)

Huebner, meanwhile, knew that his match (with Adorjan) would be held at the appointed time (in March) in West Germany. So this grandmaster could work, according to his usual habit, with all his energies. On the whole, Robert is a man of exceptional dedication - this is the part of his personality that impresses me most. His profession is the unravelling of ancient papyrus, a task he gives himself to wholeheartedly. But then, when he turns to chess, he treats the game with equal seriousness, allowing himself no distractions or other preoccupations. Certainly, the West Germans place great - and in my opinion, justified - hopes in their leader.

The third participant at Bad Kissingen did not necessarily have to be Wolfgang Unzicker. It might have been Helmut Pfleger, for example, had he not been otherwise engaged at the time. However, the organizers had no intentions of holding their tournament at all without the participation of the World Champion (- he said modestly. - Trans. ). Well, my sports calendar is booked months in advance; since I gave the West German Chess Federation my consent a long time ago, I was now bound to appear - even though I was "coming to the mark" (in footracing parlance) in rather unaccustomed psychological shape. I don't remember when I was last afflicted with such miserable playing form as I showed at the European Team Championships in Sweden<sup>1</sup>. I was determined to snap my "streak" in West Germany, and so I did my best to put myself in a warlike frame of mind.

The short, double-round tournament format proved to be an aid to achieving that frame of mind. Generally, such events require the player who seeks only the top places to treat each game with particular attention. A single moment of weakness, in any game - and you can just kiss your aspirations goodbye. A similar short tournament held in the Philippines in 1976 is a good example: after one loss to Eugenio Torre, I was quite unable to catch him, and had to settle for second place.

Thus, the short distance of this tournament was a desirable factor, from the point of view of at least three of the participants at Bad Kissingen. But before relating to you how we all covered that distance, I would like to share my impressions of another curious undertaking that was organized by the hotel in which we participants were housed, in conjunction with a chain of department stores, of considerable financial power. I am speaking of a simultaneous exhibition, pitting us four chessplayers against a hundred computers. Each one of us actually had 25 "opponents"; but in order to make a more imposing advertisement, it was announced that the hundred machines would battle the grandmasters together. Advertising moves commerce, as is well known; therefore, it is rarely explained, in the Western world, that the computer that took on Robert Huebner (or Walter Browne, or David Levy) beat him in a simultaneous exhibition, or a 3-minute blitz game. And that is, up to now, what has been happening, for the chess machine is not too strong yet, although it is getting smarter ...<sup>2</sup>

How did our "opposition" look? They came in three parts: the mini-computer itself, a chessboard, and a teletype machine. At the present time, they're rather expensive: they run about one-third the average monthly salary<sup>3</sup>. In addition, they use a substantial amount of electricity, the exact amount being determined by the amount of time the computer is allotted for its calculations. (Thus, in the adjoining halls, computers were put on display which could be "set" to match the strength of the player, allowing the machine half a minute, a full minute, or more, per move. Those

<sup>1</sup> It musta been awful. Generally "64" is quite generous with the details of Soviet team members performances; this year, they gave no board scores, unless the player in question won a board prize - no doubt, to cover Karpov's result. - Trans.

<sup>2</sup> Evidently Tolya hasn't heard yet about the (slow) match between Levy and Chess 4.8, where the computer won one game at "normal" speed. - Trans.

<sup>3</sup> Karpov recently defended his dissertation in economics.

among the spectators who did not care for losing, would allow a correspondingly smaller amount of time on their "opponent"'s clock.)

The "exhibition participants" had a rather limited program: they all met 1e4 with 1... e5, and then 2 Nf3 with 2... d5 (except for an occasional foray into the Caro-Kann with 1... c6). The exhibitor might easily make his task a good deal easier by repeating his moves from board to board, since the computer did not exactly amaze us with its variety in that case, either. By way of an experiment, I even went so far as to win four identical games, move for move. Nor did this event lack for curious occurrences: in one game, I hung a whole rook, and had to resort to a ruse in order to win. Since the program follows the principle "Take what is offered, run when attacked", if you threaten mate and a piece at the same time, the machine will rather be mated than accept a less than favorable material exchange.

Here too, a whole rook to the good, my "opponent", rather than give up the exchange, sacrificed its king ...

Overall, the grandmasters won by 100 to 0 - although Spassky, for example, had to work very hard indeed for his hundred-percent result. He tried to play creatively, with lots of sacrifices; and the machine is strongest precisely in the calculation of exchanging combinations (of the 30 seconds it was allotted, it needed only 10 to calculate any simplification). I might also add that, given sufficient time, this mini-computer will find the correct solution to any 4-mover: it can see all variations ending in mate, up to 7 half-moves.

We welcome Jim Marfia to the ICB. Jim is translator of Dover ZURICH, 1953 by Bronstein, a columnist for THE ICB NEWS BULLETIN and writer for MICHIGAN CHESS.

The above is based on material in the Russian periodical '84'.

(Reprinted with permission from Illinois Chess Bulletin, September-October 1980)



JOIN THE USCF!



All members of the CIGL are encouraged to join the U.S. Chess Federation. CIGL members may join, or renew membership, at a 20 percent discount because the CIGL is a USCF affiliate. Membership in the USCF includes a subscription to Chess Life and Review, one of the world's best chess magazines, and allows members to play in USCF-rated tournaments, from the U.S. Open down to the small local tournaments like the CIGL's own annual USCF Tornado. Members acquire a nationally recognized rating and can buy chess books and equipment at discount prices.

Perhaps the greatest benefit of USCF membership is the opportunity to improve one's play. By participating in USCF-rated tournaments, a player can test his ability and ideas against a wide range of openings, abilities, and styles. There is a USCF-rated tournament typically every few weeks somewhere in the Chicago area.

One year's USCF membership for CIGL members is only \$16 (this includes the 20 percent discount). Send your check, payable to the U.S. Chess Federation, to: Charles Ward, 615 S. Lincoln Street, Hinsdale, IL 60521. You will receive a receipt that will serve as a temporary membership card until your permanent card arrives from the USCF, and your check will be forwarded to the Federation.

If you are renewing your membership, please also include your membership number and expiration date. These can be found on your CL&R mailing label. If you were a USCF member in the past but allowed your membership to lapse, please mention the approximate date that your membership expired.





OPEN LETTER TO CICL PLAYERS



In the belief that games are what make a chess publication valuable to chess players, I have volunteered to be games editor for the CICL bulletin. But in order to be games editor, I need games to publish. That's where you come in. You have to send me games. The more the better.

Any number of things can make a game worth publishing. A fierce attack, an interesting combination, an instructive positional maneuver, a dramatic sacrifice, a good fight, an unusual opening, a theoretical novelty. The list is not exhaustive. If the game is interesting to you, it is probably interesting to someone else.

While annotated games are more valuable to the reader and will be published first, unannotated games are also welcome. If you have a game you would like to see in print, just send me a photocopy of the scoresheet. If you want to improve chances of its being published, scribble a note or two on the back, and we'll consider that annotation. Scores can be in English descriptive or algebraic notation; I'll use whatever you send. The only things that will disqualify a game are an illegible or inaccurate score sheet; if I can't read it or the moves can't be played, there's no reason to publish it.

This month, just to get things started, I'm using some material from my games, some solicited material and some grandmaster games. Because I work at Argonne, there is the danger that Argonne players and players in the western divisions will be overrepresented, so you players in the North and East divisions, please send me games so your teams will be represented.

Send games to Dave Baurac, 7517 Country Lane South, Darien, IL 60559. Please include your phone number, so I can call you if I have any questions.

\*\*\*\*\*

Nimzoindian: R. Golla, Sears-G. Berry, Argonne Rooks, Round three, CICL playoffs, 1980

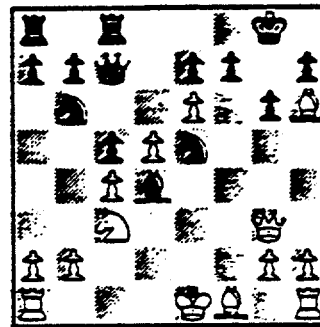
1. N-KB3 N-KB3 2. P-QB4 P-K3 3. N-QB3 P-Q4 4. P-Q4 B-N5 5. P-K3 O-0
6. B-Q3 (By transposition, the Rubinstein variation of the Nimzoindian, a position usually reached by the move order 1. P-Q4 N-KB3 2. P-QB4 P-K3 3. N-QB3 B-N5 4. P-K3 O-0 5. B-Q3 P-Q4 6. N-B3) PxB (The usual continuation is 6. ... P-B4 7. O-O N-B3 8. P-QR3 BxN 9. PxB PxBP 10. BxP Q-B2, and we have reached a branching-off point with equality.) 7. BxP N-K5 (7. ... P-B4!) 8. Q-B2 NxN 9. PxN B-K2 10. O-O P-QN3 11. P-QR4 B-N2 12. N-K5 N-Q2 13. NxP RxN 14. BxP N-B3 15. P-B3 B-Q4 16. BxR+ BxB 17. P-K4 B-B5 18. R-B2 N-R4 19. P-N4 N-B3 20. B-K3 Q-Q2 21. P-R3 R-K1 22. P-R5 P-QN4 23. P-Q5 P-QR3 24. B-Q4 B-Q3 25. Q-Q2 Q-K2 26. R-Q1 N-Q2 27. R-N2 N-K4 28. Q-K3 N-N3 29. R-K1 B-B5 30. Q-B2 N-R5 31. K-R1 NxR 32. KxN BxP 33. P-R4 B-B5 34. P-R5 B-N4 35. K-R3 B-B3 36. P-K5 Q-K3 37. P-B4 B-Q1 38. P-B5 Q-B2 39. Q-N3 B-N4 40. P-K6 Q-K2 41. Q-B2 Q-Q1 42. P-R6 B-B3 43. PxB BxB 44. PxB KxP 45. Q-B4 P-R3 46. P-K7 Q-Q3 47. R-K5 Q-KB3 48. P-Q5 RxP 49. R-K6 RxR 50. QPxR BxP 51. QxP+ B-B2 52. K-N3 P-N5 53. K-B4 P-N6 54. Q-N7 P-N7 55. K-K4 Q-B6 56. P-N5 PxB 57. P-B6+ QxP 58. K-K3 Q-QB6+ 59. K-K4 P-N8/Q+ 60. QxQ B-N3+ O-1

\*\*\*\*\*

Alekhine's Defense: D. Baurac-M. Smiley, Bloomington, 1980

1. e4 Nf6 2. e5 Nd5 3. d4 d6 4. c4 Nb6 5. f4 g6 6. Be3 de 7. fe Bg7 8. Nc3 O-O 9. Nf3 c5 10. d5 (The main line is 10. dc N6d7 11. e6 fe 12. Qc2 Qa5 13. Be2 with an unclear position in which White's superior development and the doubled, isolated e-pawns compensate for the soon-to-die Pc5.) Bg4 11. Bf4 (11. Bc5 N8d7 gives advantage to Black, according to the Encyclopedia of Chess Openings.) N8d7 12. Qe2 Qc7 13. Qe3 Bf3 (At first glance, this appears to win White's e-pawn.) 14. e6 Be5 15. Bh6 Bd4 16. Qf3 Ne5 17. Qg3 Rfc8?? (The losing move -- see diagram. Black must play 17. ... Bc3+ first to get rid of the pesky knight.) 18. Nb5 Qb8 19. Nd4 cd 20. ef+ Nf7 21. Bf4 Nd6 22. Rc1 (Threatening 23. c5.) Nd7 23. Bd3 Kg7 (Black's last six moves have been forced. If 23. ... Nf6 24. Bg6!) 24. O-O b5 (To make space for the queen. If Black moves the Rc8 or Nd7, White wins with 25. c5.) 25. Qg5 (Threatening 26. Qh6+ Kg8 27. Bg6 hg 28. Qg6+ Kh8 29. Rf3 and mates soon.) Nf7 26. Qe7 Qb7 (26. ... Re8 27. Qf7+ Kf7 28. Bb8 wins for White.) 27. Bh6+ Kh6 28. Rf7

1-0



Position after 17. ... Rc8.  
Black is lost.

\*\*\*\*\*

Just to make the point that there is nothing ignominious about having one of your losses published, here is one of mine:

Reti: H. Chan, Sears-D. Baurac, Argonne Rooks, Round three, CIGL Playoffs, 1980

1. Nf3 Nf6 2. g3 d5 3. Bg2 c5 4. d3 Nc6 5. O-O e6 6. c4 Be7 7. Bd2 O-O 8. a3 Qc7 9. Nc3 a6 10. Qe1 dc 11. dc Na5 12. Bf4 Bd6 13. Bd6 Qd6 14. Nd2 Rb8 15. Nce4 Ne4 16. Ne4 Qc7 17. Qc3 b6 18. b4 Nb7 19. Rfd1 Bd7 20. Rab1 Rfd8 21. b5 ab (Considering that I knew before the game started that we needed only a draw to win the championship, I should have sealed the Q-side with 21. ... a4, and then exchanged heavy pieces along the d-file. Instead, I played the text move, trying for a win by creating a protected past pawn. As you will see, the move backfired.) 22. cb Be8 23. a4 Rdi+ 24. Rd1 Rd8 25. Qc2 f6 26. Rc1 Bg6 27. Bh3 Qe5 28. Bg2 Rd4 29. f3 Nd6 30. Rd1 Be4 31. fe Ne4 32. Be4 Rdi+ 33. Qd1 Qe4 34. a5! (This came as a complete surprise to me. Remember the note to move 21? If I had played 21. ... a4 then, this would not now be possible.) ba 35. h5 a5 36. b6 Qa8 37. Qd7 Qe4 38. Qe8 mate 1-0

\*\*\*\*\*

Queen's Indian: F. Samisch-A. Nimzovich, Copenhagen, 1923

1. P-Q4 N-KB3 2. P-QB4 P-K3 3. N-KB3 P-QN3 4. P-KN3 B-N2 5. B-N2 B-K2 6. N-B3 O-O 7. O-O P-Q4 8. N-K5 P-B3 9. PxP (Prematurely easing center tension. Better is 9. P-N3.) BPxP 10. B-B4 P-QR3 (Beginning to constrict the white pieces, a theme which dominates the entire game. The move also prepares an outpost on QB5; Nimzovich plans ... PQN4 and ... QN-B3-R4-B5.) 11. R-B1 P-QN4 12. Q-N3 (Euwe suggests 12. P-QR3, temporarily restricting ... P-N5.) N-B3 13. NxN (This is the third move for the White knight, while Black's has moved only once; thus, White sacrifices two tempi, rather than let the black knight settle in on QB5.) BxN 14. P-KR3 Q-Q2 15. K-R2 (It is too late for 15. P-QR3, which would be answered by ... P-QR4.) N-R4 16. B-Q2 P-B4 17. Q-Q1 P-N5 18. N-N1 (Black is slowly forcing White to retreat.) B-QN4 19. R-N1 B-Q3 20. P-K4? (Discovering an attack on the knight, but losing the game. Correct is 20. P-K3.) BPxP! 21. QxN RxP ("Two pawns and the seventh rank and an enemy Q-side which cannot be disentangled -- all this for only one piece!" -- Nimzovich.) 22. Q-N5 (White is rapidly running out of moves.) QR-KB1 23. K-R1 (To avoid losing the KNP to 23. ... R1-B6.) R1-B4 24. Q-K3 B-Q6 25. QR-K1 (The threat was 25. ... R-K7 winning the Q.) P-R3!! O-1. (Zugzwang! After P-N3 and P-KR4, which Black answers with king moves, White cannot move without suffering heavy material loss. This game is known to chess history as the Immortal Zugzwang Game.)

\*\*\*\*\*

Caro-Kann: R. Reti-S. Tartakower.

1. P-K4 P-QB3 2. P-Q4 P-Q4 3. N-QB3 PxP 4. NxP N-KB3 5. Q-Q3 P-K4 6. PxP Q-R4ch 7. B-Q2 QxKP 8. O-O-O NxN?? 9. Q-QBch KxQ 10. B-N5ch K-B2 11. B-Q8 mate 1-0

\*\*\*\*\*

Bishop's Opening: Legal-St. Brix, Paris, 1787.

1. P-K4 P-K4 2. B-B4 P-Q3 3. N-KB3 N-QB3 4. N-B3 B-N5 5. NxP BxQ 6. BxPch K-K2 7. N-Q5 mate 1-0

Here it is again, 142 years later, with an improvement.

Bishop's Opening: Cheron-Amateur, Zurich, 1929.

1. P-K4 P-K4 2. B-B4 P-Q3 3. N-KB3 N-QB3 4. N-B3 B-N5 5. P-KR3 B-R4 6. NxP BxQ 7. BxPch K-K2 8. N-Q5 mate 1-0.

Cheron, of course, was well acquainted with Legal's 1787 game.

\*\*\*\*\*

Queen's Indian: L. Polugayevsky-V. Korchnoi, Candidates' Match, Game 6, Buenos Aires 1980

1. N-KB3 N-KB3 2. P-B4 P-QN3 3. P-KN3 B-N2 4. B-N2 P-K3 5. O-O B-K2
6. P-Q4 O-O 7. P-Q5!? (The Pomar Gambit.) PXP 8. N-Q4 N-B3 9. PXP NxB
10. QxN P-B4 11. Q-Q3 P-Q3 12. P-QR4 P-QR3 13. N-R3!? (A new move which finds an excellent outpost for the knight. The usual move order has been 12. N-B3 followed by 13. P-QR4, which led to positions more favorable to Black.) P-QN4 14. B-B4 P-N5 15. N-B4 P-QR4 16. P-K4 B-R3
17. Q-B2 BxN 18. QxB N-Q2 19. KR-Q1 N-N3 20. Q-N5 Q-B2 21. B-R3 KR-N1
22. Q-B6 Q-Q1 23. P-K5 N-B5 24. PXP BXP 25. BxB NxB 26. QXP P-N6 27. R-Q4 R-N2 28. R-QB1 P-R3 29. Q-B3 QR-N1 30. Q-K3 R-K2 31. Q-B4 R-K7
32. R-B6 R-N3 33. Q-B1 Q-B3 34. Q-KB4 Q-Q1 35. R-Q2 P-N4 36. Q-Q4 R-N5
37. Q-B3 R-K8ch 38. B-B1 RXP 39. R-K2 RxB 40. BxB Q-K2 41. B-Q3 R-R8ch
42. K-N2 R-Q8 43. R-R6 Q-Q1 44. Q-Q4 P-B4 45. R-R7 Q-KB1 46. Q-B3 P-R5
47. Q-B7 Q-B2 48. R-R8ch K-N2 49. QxN RxB 50. Q-K5ch 1-0

Victor Korchnoi of Switzerland won the match. The game above evened the score at three points each; Korchnoi had won game four. Korchnoi then won game eight, and Lev Polugaevsky of the Soviet Union pulled even again, winning the 12th game of the scheduled 12-game match. A series of two-game rounds began to determine the winner, and Korchnoi emerged victorious; drawing game 13 and winning number 14. All of Korchnoi's victories came with the black pieces.

Robert Huebner of West Germany defeated Lajos Portisch of Hungary in the other candidates' semifinal match. The match, played in Abano Terme, Italy, started with eight draws before Huebner broke it open, winning games nine and 10. A draw in game 11 gave him the 6 1/2 points needed for victory in the 12-game match. Huebner now faces Korchnoi for the right to challenge Anatoly Karpov of the Soviet Union for the world championship. According to the USCF, the 16-game Korchnoi-Huebner match will start in December. Bids are still being taken to determine the site.

Sicilian Defense: Huebner-Portisch, Candidates' Match, Game 9, Abano Terme, 1980.

1. P-K4 P-QB4 2. N-KB3 P-Q3 3. P-Q4 PXP 4. NXP N-KB3 5. N-QB3 P-QR3
6. B-K3 P-K3 7. P-B4 P-QN4 8. Q-B3 B-N2 9. B-Q3 QN-Q2 10. P-KN4 N-B4
11. P-N5 P-N5 (Sacrificing a pawn to ruin White's pawn structure.) 12. PxB PxB 13. BPXP BxNP 14. PXP Q-B2 15. R-QN1 O-O-O 16. K-K2 KR-K1
17. KR-N1 B-KR1 (Threatening to open the center with 18. ... P-K4 19. PXP RXP.) 18. P-B5 (Forcing Black to close the center, but giving back the pawn.) P-K4 19. N-N3 NXP 20. BxN Q-B5ch 21. K-Q2 BxB 22. Q-B2 K-Q2
23. B-N6 R-QN1 24. K-B1 B-R1 25. N-Q2 Q-QR5 26. P-B6 B-Q4 27. P-B4 QBXP
28. R-KN4 Q-R6ch 29. R-N2 B-K3 30. N-B4 Q-R6 31. NXPch! PxB 32. R-Q4ch B-Q4 (If 32. ... PxB or ... K-B3, Black gets mated.) 33. RxBch K-K3 34. R-B5 Q-R3ch 35. K-N1 Q-B5 36. R-B6ch K-B4 37. Q-K2 P-R3 38. R-N3 K-N3
39. R-KB3 Q-Q5 40. R-N3 Q-Q4?? (A blunder at the time control. When play was to resume, Portisch showed up only to resign without waiting to see Huebner's sealed move.) 1-0.

\*\*\*\*\*



CHICAGO INDUSTRIAL CHESS LEAGUE  
OFFICERS, 1980-81



President:

Gee Leong  
Kemper Insurance Co.  
Field Systems B-3  
Long Grove, IL 60047  
540-2233 (work)  
367-4132 (home)

Secretary:

Charles Ward  
Dept. 5446, Room 6H341  
Bell Telephone Laboratories  
Warrenville & Naperville Roads  
Naperville, IL 60556  
462-6250 (work)  
325-3885 (home)

North Division Chairman:  
Treasurer:

Jim Brotsos  
6563 N. Tahoma Ave.  
Chicago, IL 60646  
775-5054 (home)

Near West Division Chairman:

Dan Kumro  
802 S. Elmhurst Road  
Mt. Prospect, IL 60056  
981-2221, 981-2224 (work)  
259-4981 (home)

East Division Chairman:

Tom Gaffigan  
First National Bank  
16th Floor  
1 First National Plaza  
Chicago, IL 60670  
732-3988

Far West Division Chairman:

Joe Brozovich  
Western Electric Co.  
Indian Hill, Room 4F408  
Warrenville & Naperville Roads  
Naperville, IL 60556  
462-6545

Bulletin Editor:

Don Graft  
Rockwell-Wescom  
8245 Lemont Road  
Downers Grove, IL 60515  
985-9000, ext. 2731

Ratings Chairman:

Paul Weston  
1741 Violet Street  
Aurora, IL 60505  
983-4090 (work)  
898-7683 (home)



CHICAGO INDUSTRIAL CHESS LEAGUE  
MEETING OF AUGUST 21, 1980  
MINUTES



1. The meeting was called to order at Albright Gymnasium of Western Electric by president Gee Leong. The minutes of the spring business meeting were approved as published in the CICL Bulletin.
2. A financial report covering the 1979-80 season, as well as a proposed budget for the forthcoming 1980-81 season, were presented by treasurer Jim Brotsos. The League showed a loss of \$29 last season, relative to total expenses of \$970. This loss was minimized by virtue of economies in the cost of trophies and of the annual awards banquet. However, to keep the League at the break-even point for next season, Brotsos recommended the increase of team dues from \$20 per season to \$22. Further, based on analysis of actual costs last season, it would be necessary to raise the subscription fee for the CICL Bulletin from \$7 per year to \$10 per year to keep it on a self-supporting basis. The proposed budget for the coming season was based on the assumption of these increases. After discussion, the report was accepted, and the two rate increases described above were accepted unanimously.
3. Apex Toolworks of Rolling Meadows applied for membership in the League. Although the company has only 40 employees, the proposed team has 9 members, and has played a practice match against Motorola. The team has not yet been able to arrange suitable quarters for home matches, but is willing to play all matches away until arrangements can be made. The team was admitted to the League by a unanimous vote.
4. Standard Oil applied for membership for a team in the East Division. Some 10 employees are interested in playing, including some USCF members. Due to arrangements at the company, the team will have to play all matches away. The team was admitted to the League contingent on finding an adequate number of committed players, the vote being unanimous.
5. International Harvester announced its intention to enter a second team in the League, and Argonne similarly announced that it would enter a fourth team. (Subsequently, it appeared that neither of these teams could in fact be formed.)
6. Jim Brotsos requested that two more individuals be approved for competition as alumni members: Marion Bykowski (ex-ITT) and Harvey Green (ex-Sara Lee). Both persons were approved unanimously.

7. The perennial question of the most valuable player awards was raised again. It was decided that a committee of the four division chairmen, with a committee chairman to be appointed by the president, would agree on a technique to select a unique winner for each division, and that this method would be published no later than the second Bulletin of the coming season.
8. Nik Goncharoff proposed that the refundable banquet deposit, required for each team be increased from the present \$10 to \$12, to reflect the actual cost of a banquet dinner. This proposal was defeated by a vote of 12 to 8.
9. Paul Weston proposed that the banquet fee be eliminated altogether. This also was defeated, by a vote of 14 to 5.
10. President Gee Leong announced that a Bulletin editor for the coming season had still not been found. Until a regular editor could be appointed, Beryl Price was willing to continue editing the Bulletin, but it would have to be produced elsewhere, and Vern Stamm had agreed to handle the production. (Subsequent to the meeting, it was announced that Don Graft of Rockwell-Wescom had agreed to serve as editor.)
11. Paul Weston proposed that the speed chess tournament at the annual banquet have a nominal entry fee (e.g., \$1), which would be matched by the League, to provide the cash prizes. This proposal was approved.
12. The format of the annual USCF-rated Tornado tournament was discussed at length, in view of the losses incurred by the League each year in sponsoring it. It was agreed that it be planned in future seasons as a self-supporting operation, with entry fees ranging up to the going norm as necessary to provide adequate income.
13. It was agreed that the League would contribute \$30 toward membership expenses in the Illinois Chess League for teams composed of CICL members, provided that they used "CICL" as part of their team name.
14. As there was no further business, the meeting was adjourned.

Respectfully submitted,

Charles E. W. Ward

Secretary

Attendees: see next page.

---

CICL MEETING OF AUGUST 21, 1980  
ATTENDEES

---

Dave Baurac	Argonne Rooks
David Green	Argonne Pawns
Harry Sue	Teletype
Richard Wagner	Teletype Knights
Vern Stamm	Western Electric
Michael Dee	Amoco
Bob Motycka	International Harvester
R. Weitz	FelPro
Ed Radavicius	Western Electric
Tom Gaffigan	First National Bank
Larry Agee	Standard Oil
Karel Dobr	Western Electric Chargers
Dan Kumro	Western Electric Chargers
Paul Weston	Bell Labs Royals
Nik Goncharoff	Motorola
Charles Ward	Bell Labs Players
Gee Leong	Kemper Insurance
Irwin Gaines	Fermilab
Jim Whittenhall	Apex Toolworks
Ted Owens	International Harvester
Jim Brotsos	Excaliburs
Marty Klein	Standard Oil

---

# 1980 National Open

Oct. 17-19



**\$6,100 in Prizes**

For more information see Tournament Life announcement on  
Page 53 of the August Chess Life.



**\$** CHICAGO INDUSTRIAL CHESS LEAGUE **\$**  
INCOME-EXPENSE STATEMENT, 1979-80

Balance from previous year		\$383.56
<u>Income</u>		
Dues, 34 teams @ \$20	\$680.00	
Misc., interest on savings account	<u>26.26</u>	
Total income		<u>706.26</u>
Total funds available		\$1089.82
<u>Expenses</u>		
Tornado tournament (see Exhibit 1)	\$ 48.08	
Awards banquet (see Exhibit 1)	158.45	
Bulletin (see Exhibit 1)	112.59	
Trophies and awards	265.72	
Annual affiliate membership dues		
U.S. Chess Federation	\$25.00	
Ill. Chess Association	<u>15.00</u>	
		40.00
Honorariums		
Bulletin editor, B. Price	\$50.00	
Ratings Chairman, P. Weston	<u>35.00</u>	
		85.00
Mailing expenses		
Secretary, C. Ward	\$3.60	
Treasurer, J. Brotsos	3.84	
Far West Division Chairman, J. Brozovich	<u>6.00</u>	
		13.44
Misc. checking account expenses	<u>11.39</u>	
Total expenses		<u>734.67</u>
Closing surplus		\$355.15

Respectfully submitted,  
James Brotsos  
CICL Treasurer

EXHIBIT 1

TORNADO TOURNAMENT, MAY 17, 1980

Income

Advance payments		
14 CICAL members @ \$4		\$56.
3 non-CICAL contestants @ \$5		15.
Payments at door, 12 @ \$6		72.
One USCF membership		<u>16.</u>
Total income		\$159.0

Expenses

Cash prizes	\$132.00	
USCF membership and rating fees	31.50	
Tournament director's fee	30.00	
Trophy, 1st place CICAL member	8.27	
Book prize, top junior	<u>5.31</u>	
Total expenses		<u>207.08</u>
Net loss		(\$48.08)

AWARD BANQUET, JUNE 27, 1980

Income

Meal guarantees prepaid by 34 teams @ \$10		\$340.00
Individual dinner receipts		<u>951.50</u>
Total funds received for banquet		\$1291.50

Expenses

Meal costs paid to Holiday Inn	\$1070.45	
Speed chess cash prizes	134.00	
Cash gift to speaker (Skolnik)	25.00	
Refunds on team prepayments	<u>220.50</u>	
Total expenses		<u>1449.95</u>
Net loss		(\$158.45)

EXHIBIT 1 (CONT.)

CICL BULLETIN

Income

28 Team subscriptions @ \$7		\$196.00
13 Individual subscriptions @ \$3		<u>39.00</u>
Total income		\$235.00

Expenses

Production costs	\$249.36	
Postage	<u>98.23</u>	
Total expenses		<u>347.59</u>
Net loss		(\$112.59)

EXHIBIT 2

CICL 1980-81 OPERATING BUDGET

	<u>1978-79</u> Actual	<u>1979-80</u> Actual	<u>1980-81</u> Budget
Assets from previous year	\$300.39	\$383.56	\$355.15
<u>Income</u>			
Dues	700	680	770*
Bulletin	245	235	350**
Misc.	<u>115</u>	<u>26</u>	<u>30</u>
	\$1060	\$941	\$1150
<u>Expenses</u>			
Bulletin	153	348	360
Tornado tournament	61	48	50
Banquet	228	158	200
Trophies and awards	378	266	300
Misc.	<u>157</u>	<u>150</u>	<u>160</u>
	\$977	\$970	\$1070
Net gain	\$83	\$29	\$80

\* Based on dues of \$22 per team.

\*\* Based on subscription rates of \$10 per company and \$4.50 per individual.



PLAYOFF ROUND-BY-ROUND RESULTS



29-APR-80		ANL KNIGHTS		1.5		ANL ROOKS		4.5	
ROUND 1	RD	RATINGS	SCORE	RATINGS	SCORE	RATINGS	SCORE	RATINGS	SCORE
	1	BENEDEK, R	2227-14	.5	KUCERA, D	1984	9	.5	
	2	YOUNG, C	1874-19	0	JACKSON, J	1925	13	1	
	3	PETERSON, M	1787	18	1	BERRY, G	1853-18	0	
	4	APPELMAN, E	1688-19	0	WILSON, R	1744	13	1	
	5	KELLOGG, K	1645-27	0	BAURAC, D	1575	27	1	
	6	DEVER, D	1557-22	0	BINGLE, J	1560	22	1	
	7	KINSELLA, G	1386	34	1	SHIRKEY, L	1580-23	0	
	8	COOVER, K	1387	27	1	BAKER, L	1454-27	0	
	9	BURBA, K	1406	0	1	WIENCEK, T	0000	0	0

06-MAY-80		TELETYPE KNIGHTS		4		HARZA ENGINEERING #1		2	
ROUND 1	RD	RATINGS	SCORE	RATINGS	SCORE	RATINGS	SCORE	RATINGS	SCORE
	1	TEGEL, F	2038	5	.5	STEVANOVIC, M	2159	-8	.5
	2	JACOBS, N	1830	33	1	ELLEDGE, J	2007-33	0	
	3	CHRISTIAN, R	1612	-9	0	MURNE, U	1853	9	1
	4	DURKEE, D	1708	25	1	RAFTSHOL, U	1744-25	0	
	5	WAGNER, R	1676	23	1	MUNOZ, R	1683-23	0	
	6	PINSKY	0000	0	.5	KOLENDA	1668	0	.5
	7	KLEMM, J	1497	21	1	GILMER, J	1482-21	0 (TTY)	

06-MAY-80		SEARS		5		WE CHARGERS		1	
ROUND 1	RD	RATINGS	SCORE	RATINGS	SCORE	RATINGS	SCORE	RATINGS	SCORE
	1	REYES, R	2268	10	1	WARREN, J	2040	-6	0
	2	LATIMER, E	1927	18	1	MARCOWKA, R	1856-18	0	
	3	GOLLA, R	1877	14	1	KUMRO, D	1733	-9	0
	4	ANDRESEN, T	1835	15	1	DOBR, K	1711-10	0	
	5	LEMS, B	1636-20	0	RADAVICIUS, E	1671	20	1	
	6	SCHWARTZ, S	1670	11	1	SWIDERSKI, M	1477-11	0	
	7	DEMAFILES, E	1416-13	0	STAMM, V	1578	8	1 (6 AMET)	

08-MAY-80		WE KINGSMEN		4.5		MOTOROLA		1.5	
ROUND 1	RD	RATINGS	SCORE	RATINGS	SCORE	RATINGS	SCORE	RATINGS	SCORE
	1	ELLENBERG, A	2206	4	1	GONCHAROFF, N	1825	-3	0
	2	PEHAS, A	2007-15	.5	NEUMARK, J	1743	10	.5	
	3	PARKER, L	1885	10	1	GREENSPAN, P	1664	-7	0
	4	BROZOVICH, J	1716-29	0	OGASAWARA, R	1621	19	1	
	5	SMITH, BR	1491	30	1	HENNING, J	1613-20	0	
	6	SHAFF, R	1476	26	1	MAGLIC, R	1537-26	0	
(AMOCO)	7	DEE, M	1531	0	0	BLAZEVIC, C	0000	0	1
	8	FORFIET		0	OF	FREDRES		0	1F
	9	FORFIET		0	OF	TOLSON, n		0	1F
	10	FORFIET		0	OF	DEPALMA, G		0	1F

27-MAY-80 HARZA ENGINEERING #1		2.5 ANL KNIGHTS		3.5			
ROUND 2	BD	RATINGS	SCORE	RATINGS	SCORE		
1	NURME,U	1862	40	1	BENEDEL,R	2213-40	0
2	RAFTSHOL,W	1719-14	0	0	YOUNG,C	1855 14	1
3	ELLEDEGE,J	1974-40	0	0	KELLOGG,K	1616 40	1
4	DIEFENTHAL,D	1678-31	0	0	DEVER,D	1535 31	1
5	KOLENDA	1668-15	.5	.5	BURBA,K	1406 15	.5
6	MUNOZ,R	1660	9	1	KINSELLA,G	1420 -9	0

28-MAY-80 SEARS		4 TELETYPE KNIGHTS		2			
ROUND 2	BD	RATINGS	SCORE	RATINGS	SCORE		
1	REYES,R	2278	9	1	TEGEL,F	2043 -6	0
2	LATIMER,E	1945	17	1	JACOBS,N	1863-17	0
3	GOLLA,R	1891	7	1	CHRISTIAN,R	1603 -7	0
4	ANDRESEN,T	1850	13	1	WAGNER,R	1699-13	0
5	CHAN,H	1739-23	0	0	DURKEE,D	1733 23	1
6	LEMS,B	1616	0	0	FINSKY	0000 0	1
7	DEMAFILES,E	1403	0	0	MONSER,E	0000 0	1

29-MAY-80 ANL ROOKS		3.5 WE KINGSMEN		2.5			
ROUND 2	BD	RATINGS	SCORE	RATINGS	SCORE		
1	KUCERA,D	1993	-7	0	ELLENBERG,A	2210 10	1
2	JACKSON,J	1936	-2	.5	PARKER,L	1895 3	.5
3	BERRY,G	1835	10	1	ELLIOTT,W	1728-10	0
4	WILSON,R	1757	12	1	BROZOVICH,J	1687-18	0
5	BAURAC,D	1602	22	1	SORUN,J	1597-22	0
6	BINGLE,J	1582-26	0	0	SMITH,BR	1521 26	1
7	SHIRKEY,L	1557	-2	.5	SHAFF,R	1502 4	.5
8	DECHAN,S	0	0	1F	PLANT,B	0	0F

02-JUN-80 WE CHARGERS		5 - MOTOROLA		1			
ROUND 2	BD	RATINGS	SCORE	RATINGS	SCORE		
1	WARREN,J	2034	7	1	GONCHAROFF,N	1822 -7	0
2	MARCOWKA,R	1838	17	1	NEUMARK,J	1753-11	0
3	KUMRO,D	1724	12	1	GREENSPAN,P	1657-12	0
4	DOBR,K	1701	12	1	OGASAWARA,R	1640-12	0
5	RADAVICIUS,E	1691	0	1	BLAZEVIC,C	0000 0	0
6	SWIDERSKI,M	1466-35	0	0	CONROE,R	1244 35	-1

10-JUN-80 ANL ROOKS		3 SEARS		3			
ROUND 3	BD	RATINGS	SCORE	RATINGS	SCORE		
1	KUCERA,D	1986	-4	0	REYES,R	2287 7	1
2	JACKSON,J	1936	16	1	LATIMER,E	1962-24	0
3	BERRY,G	1845	17	1	GOLLA,R	1898-26	0
4	WILSON,R	1769-11	0	0	ANDRESEN,T	1863 16	1
5	BAURAC,D	1624-17	0	0	CHAN,H	1716 17	1
6	BINGLE,J	1556	26	1	LEMS,B	1616-26	0
7	SHIRKEY,L	1557-21	0	0	DEMAFILES,E	1403 32	1
8	DECHAN,S	1497	-4	0	ANDRESEN,T	1879 4	1

10-JUN-80 WE KINGSMEN		4.5 WE CHARGERS		1.5	
ROUND 3	BD	RATINGS	SCORE	RATINGS	SCORE
1	ELLENBERG, A	2220	12 1	WARREN, J	2041 -8 0
2	ELLIOTT, W		0 1F	MARCOWKA, R	0 0F
3	BROZOVICH, J	1669	5 .5	KUMRO, D	1736 -3 .5
4	SDBUN, J	1575-14	0	DOBK, K	1713 9 1
5	SMITH, BR	1547	31 1	RADAVICIUS, E	1691-31 0
6	HARRINGER, R	1573	14 1	SWIDERSKI, M	1431-14 0

10-JUN-80 ANL KNIGHTS		3 TELETYPE KNIGHTS		3	
ROUND 3	BD	RATINGS	SCORE	RATINGS	SCORE
1	BENEDEK, R	2173	-9 .5	TEGEL, F	2037 6 .5
2	YOUNG, C	1869	-2 .5	JACOBS, N	1846 2 .5
3	PETERSON, M	1805	13 1	DURKEE, D	1756-19 0
4	APPELMAN, E	1669-21	0	WAGNER, R	1686 21 1
5	KELLOGG, K	1658-27	0	CHRISTIAN, R	1596 27 1
6	DEVER, D	1566	12 1	ZUERCHER, J	1397-12 0
7	BURBA, K	1421-16	0	KLEMM, J	1518 16 1
8	COOVER, K	1414	0 1	ERICSON, D	0000 0 0 (T

TY2 )

12-JUN-80 MOTOROLA		2 HARZA ENGINEERING #1		4	
ROUND 3	BD	RATINGS	SCORE	RATINGS	SCORE
1	GONCHAROFF, N	1815-11	0	NURME, U	1902 17 .1
2	NEUMARK, J	1742-17	0	RAFTSHOL, W	1705 25 1
3	OGASAWARA, R	1626-14	0	DIEFENTHAL, B	1647 21 1
4	HENNING, J	1593-12	0	KOLENDA	1653 19 1
5	GREENSPAN, F		0 1F	FORFEIT	0 0F
6	SUERTH		0 1F	FORFEIT	0 0F

The following is a post-season North Division match.

01-MAY-80 EXCALIBERS		5 INT L TEL & TEL		1	
ROUND 12	BD	RATINGS	SCORE	RATINGS	SCORE
1	BUERGER, E	2143	7 1	MARLOV, J	1863 -? 0
2	WONG, P		0 0F	BRIONES, M	0 1F
3	SULLIVAN, J	1856	3 1	BYCKOWSKI, M	1496 -5 0
4	GASTELU, E	1789	2 1	POSNER, H	1254 -2 0
5	BOBBINS, G	1748	1 1	JARASLOW, M	1124 -1 0
6	BROTSOS, J	1576	0 1	GILLS, J	0000 0 0

The following match result represents the debut of Apex Toolworks. This is a post-season nonrated match. We wish Apex better luck in the regular season.

MOTOROLA

1B. Nik Goncharoff	1
2W. Joe Neumark	1
3B. Frank Suerth	1
4W. Harold Vick	1
5B. Mike Tolson	1
6W. Andy Joelson	1
7B. Dave Heffernon	<u>1</u>
	7

APEX

1W. Arthur Oelhafen	0
2B. Jim Whittenhall (Jr)	0
3W. Ed Racutt	0
4B. Jim Whittenhall (Sr)	0
5W. John Panfil	0
6B. Dominic Diberardino	0
7W. Tom Allen	<u>0</u>
	0

 TEAM LISTINGS 

The following listings include all results from last season. The ratings are current and correct. Team captains are requested to review their team's roster and correct any misspellings and/or add any new members. Also, if any players switch teams, please indicate the player's original team and the team for which he will play this season. Send changes to Paul Weston by the 15th of November (or you will have to live with the inaccuracies). Thank you.

Paul Weston

Ratings Chairman

EAST DIVISION

ALUMNI CENTRAL

NAME	RATING	SEASON			RATING CHANGE	TOTAL GAMES	RATED GAMES
		W	L	D			
CZERNIECKI	2124	6	1	0	40	46	44
DUNWORTH, J	1828	4	0	3	20	86	83
FABIJONAS, R	1804C	5	1	1	21	152	148
COX, M	1760*	6	0	1	63	25	23
DARGIS, R	1580	5	0	2	15	44	39
WILSON, A	1548	1	3	1	-46	50	45
LITVINAS, A	1459	0	1	0	-34	41	39
BELL, S	0000?	0	1	0	0	1	1

COMBUSTION ENGINEERING

NAME	RATING	SEASON			RATING CHANGE	TOTAL GAMES	RATED GAMES
		W	L	D			
VETERE, D	0000?	0	2	0	0	2	2
AHLSTRAND, G	0000?	0	1	0	0	1	0
PETERS, JEROME	0000?	0	1	1	0	2	2
CARLSON, R	0000?	0	1	0	0	1	1
WITKOWSKI, M	0000?	1	3	0	0	4	3
HALEY, D	0000?	0	3	0	0	3	1
SUDKAMP, B	0000?	1	3	0	0	4	3
KABAKOV, Y	0000?	0	2	0	0	2	1
ROOT, R	0000?	0	1	0	0	1	0
KYLES, D	0000?	4	0	0	0	4	4
FLOYD	0000?	0	1	0	0	1	0

FIRST NATIONAL BANK

NAME	RATING	SEASON			RATING CHANGE	TOTAL GAMES	RATED GAMES
		W	L	D			
GIBBS	1951	4	1	0	18	22	20
FEILER, K	1797	1	2	0	30	30	29
GAFFIGAN, T	1683	6	1	0	76	42	39
SMITH, R	1599	2	1	3	50	17	14
BUCHANAN, R	1556	0	2	1	7	54	52
NELSON, S	1445#	0	1	0	-9	8	8
SMITH, M	1442*	4	0	2	41	19	14
HOGENDORP, W	0000?	2	5	0	0	7	3
CHAIT, G	0000?	1	0	0	0	1	1
CHANG, V	0000?	0	1	0	0	1	0

HARZA ENGINEERING #1

NAME	RATING	SEASON			RATING CHANGE	TOTAL GAMES	RATED GAMES
		W	L	D			
STEVANOVIC, M	2151	4	1	2	-26	36	34
ELLEDGE, J	1934#	2	3	1	-110	9	8
NURME, U	1919*	6	2	1	10	21	18
RIGOR	1810*	0	0	1	6	21	20
RAFTSHOL, W	1730*	3	3	1	-20	17	13
KOLENDA	1672*	3	1	3	-31	19	16
MUNDZ, R	1669	4	2	0	-25	30	26
DIEFENTHAL, D	1668*	4	1	1	-2	16	14



HARZA ENGINEERING #2

NAME	RATING	SEASON			RATING CHANGE	TOTAL GAMES	RATED GAMES
		W	L	D			
BARON	1414*	1	1	1	25	12	12
SANDY, A	0000?	3	2	0	0	5	4
BARON, J	0000?	0	0	0	0	0	0
SPIRO, D	0000?	3	2	0	0	5	3
EMPLED, W	0000?	1	6	0	0	8	5
VUKSANOVICH, D	0000?	1	2	0	0	3	2
HRECHNIW, K	0000?	1	0	0	0	1	0
REVULURI, K	0000?	0	1	0	0	1	1
MADRIDEJO, T	0000?	3	3	0	0	6	3
SINCLAIR, L	0000?	1	0	0	0	1	0
BROWN, F	0000?	0	1	0	0	1	1
SUDIK, J	0000?	1	0	0	0	1	0

ILL. BELL TEL

NAME	RATING	SEASON			RATING CHANGE	TOTAL GAMES	RATED GAMES
		W	L	D			
SEDLOCK, E	1751	3	3	0	-11	60	58
KEITH, G	1659	1	2	1	-13	65	62
DEBOTH, J	1601	2	2	0	-34	29	26
BUELL, K	1578	1	2	0	-12	59	58
BILLINGSLY, T	1495W	1	3	0	30	15	9
WEDELL, M	1452W	1	2	0	-40	12	8
VOLLMER, W	1437W	4	0	1	11	13	8
KUCIK	?	2	1	0	0	7	4
EVANS, A	?	2	1	1	0	4	2
GARCIA, A	?	0	1	0	0	3	2

R.R. DONNELLEY

NAME	RATING	SEASON			RATING CHANGE	TOTAL GAMES	RATED GAMES
		W	L	D			
LEBEN, F	1669	0	2	0	-6	38	38
MAYER, T	1637W	0	2	0	-17	10	9
BURK, R	1466	2	4	1	-5	67	61
MACKEY, A	1462*	0	1	0	-3	18	17
CARLSON, J	1461	0	2	0	-13	30	30
TAYLOR, E	1319*	2	2	0	20	23	20
PRETE, B	1315*	1	2	0	-20	13	11
ROBERTS, J	1293*	0	2	0	-3	23	20
HINTON, G	0000?	0	1	0	0	1	0
TAMULIS, A	0000?	0	1	0	0	1	1
ROBLES, L	0000?	2	0	0	0	2	0
REID, S	0000?	2	5	0	0	7	4

SEARS

NAME	RATING	SEASON			RATING CHANGE	TOTAL GAMES	RATED GAMES
		W	L	D			
REYES, R	2294	6	0	1	32	91	90
LATIMER, E	1938	7	3	1	2	97	94
ANDRESEN, T	1883	7	1	1	27	84	79
GOLLA, R	1872	7	2	1	-21	80	74
CHAN, H	1733	3	3	0	-43	33	30
SCHWARTZ, S	1681C	1	1	1	-5	95	94
LEMS, B	1590	5	3	1	5	56	51
CIBA, F	1508	1	1	0	-20	34	32
DEMAFILES, E	1435H	2	2	0	19	10	8
WALLACE, C	0000?	1	1	0	0	2	1

SWIFT & CO.

NAME	RATING	SEASON			RATING CHANGE	TOTAL GAMES	RATED GAMES
		W	L	D			
GRITON, G	1402H	0	4	1	0	5	5
TRAUSCH, R	0000?	0	1	0	0	1	0
HOGAN, T	0000?	1	2	0	0	3	3
MEERS, R	0000?	2	2	0	0	4	2
GRLICA, L	0000?	1	5	0	0	6	4
HIATT, B	0000?	0	2	0	0	2	2
PARENTI, D	0000?	0	5	0	0	5	4
MCHAHON, D	0000?	0	2	0	0	2	1
MCCONVILLE, K	0000?	0	4	0	0	4	3
PETERS, S	0000?	0	1	0	0	1	1
PRADO, P	0000?	0	1	0	0	1	1

FAR-WEST DIVISION

AMOCO

NAME	RATING	SEASON			RATING CHANGE	TOTAL GAMES	RATED GAMES
		W	L	D			
SCHROEDER, H	1832	0	0	1	-11	56	56
LEE, RJ	1688	2	7	2	5	74	74
MUIR, L	1605	1	7	2	-26	89	87
DZADZIC, P	1542*	1	1	1	-8	11	11
DEE, M	1531	5	8	0	114	83	77
SPANGLER, M	1488*	1	5	5	-61	21	18
FAJFAR, DJ	1377	0	4	2	-26	31	27
SCHMIDT, T	1371H	1	6	0	-39	10	7
PAAUWE, N	1310*	0	1	0	0	19	18
REINHARDT, V	1231*	0	3	1	-10	17	17
NIMRY, T	0000?	0	1	0	0	1	1
THRASH	?	0	2	0	0	4	4

WHEATON COLLEGE

NAME	RATING	SEASON			RATING CHANGE	TOTAL GAMES	RATED GAMES
		W	L	D			
CRIFE, P	2057*	5	3	2	-13	22	21
LEONARD, T	1788*	5	2	4	-54	11	10
WALHOUT, M	1761*	8	3	1	114	30	23
UNDERWOOD, H	1568*	2	4	6	-13	12	11
HAN, A	1479#	6	4	1	28	11	6
CONGDON, B	1458*	1	5	2	-89	16	14
DZUGAN, T	1231#	0	1	0	0	12	7
PRICE	1090#	0	3	0	-16	10	6
LUBENEC, S	0000?	1	2	1	0	4	4

FERMILABS

NAME	RATING	SEASON			RATING CHANGE	TOTAL GAMES	RATED GAMES
		W	L	D			
WILKINSON, D	1793#	4	3	2	23	9	9
HILL, C	1732#	3	2	2	-23	7	7
GAINES, I	1697	1	6	5	48	34	34
FISCHLER, M	1505#	2	5	0	-15	7	6
SACHS	1453#	0	1	1	7	6	6
WALKER, R	1406	2	5	3	-5	74	70
ULSZEWSKI, C	1402#	2	2	1	0	5	5
STULL, J	1250*	0	1	0	-6	28	24
MOORE, C	1228*	1	4	0	-15	15	15
GOODMAN, M	1212#	1	5	0	0	6	6
CREAMER, D	1173#	2	4	0	0	6	5
SUMMERS, D	0000?	1	2	0	0	3	3
SPIEGEL, L	0000?	0	2	0	0	2	2

WE KINGSMEN

NAME	RATING	SEASON			RATING CHANGE	TOTAL GAMES	RATED GAMES
		W	L	D			
ELLENBERG, A	2232	8	1	2	20	11	11
PEHAS, A	1992	0	0	2	-25	75	75
PARKER, L	1898	4	0	5	46	46	46
ELLIOTT, W	1718C	5	2	4	29	203	200
BROZOVICH, J	1674	4	6	3	-50	89	77
PLANT, B	1615#	2	2	2	-30	13	9
HARRINGER, R	1587	5	0	1	51	63	50
SMITH, BR	1578	8	4	1	68	13	8
ROSEN, J	1564	3	2	1	9	58	55
SOBUN, J	1561	2	6	1	-92	85	83
SHAFF, R	1506	5	1	3	69	68	63
INORIO, P	0000?	0	1	0	0	1	1
SHUTACK, G	0000?	1	0	1	0	2	2
KOTELENSKY, L	?	0	1	0	0	4	4

ANL PAUNS

NAME	RATING	SEASON			RATING CHANGE	TOTAL GAMES	RATED GAMES
		W	L	D			
STREETS, D	2064	3	2	6	-72	81	80
MIHAILOVIC, S	1865C	3	5	1	-58	189	186
GREEN, D	1630	5	4	3	55	58	54
RENNER, T	1604	4	5	2	15	62	57
DELLICARPINI, D	1597	3	0	1	30	4	3
WALSH, W	1521	3	4	0	-44	104	101
VELECKIS, E	1486C	0	1	0	0	109	107
JOHNSON, D	1437W	0	1	1	-17	8	7
DALEY, J	1375	1	2	0	-4	43	40
FEDER, H	1363	3	1	2	41	87	83
MCKEE, J	1135*	1	2	0	-15	21	19
OTTO, N	0000?	1	1	0	0	6	3

ANL ROOKS

NAME	RATING	SEASON			RATING CHANGE	TOTAL GAMES	RATED GAMES
		W	L	D			
KUCERA, D	1982	3	3	6	12	108	107
JACKSON, J	1952C	8	3	3	23	178	177
BERRY, G	1862C	8	3	1	12	108	107
WILSON, R	1758C	7	2	1	28	134	134
BAURAC, D	1607	7	3	4	114	37	33
BINGLE, J	1582C	7	2	0	47	92	86
SHIRKEY, L	1534C	6	3	2	-13	112	107
DECHAN, S	1493	3	6	0	-68	73	67
BAKER, L	1427	1	1	0	-27	85	83
WIENCEK, T	0000?	0	1	1	0	2	2

BTL ROYALS

NAME	RATING	SEASON			RATING CHANGE	TOTAL GAMES	RATED GAMES
		W	L	D			
JAKSTAS, K	2057	9	2	1	49	28	27
WILSON, D	1980	0	2	2	-27	60	59
HOPPNER, P	1783*	8	2	2	76	27	24
BHOJWANI, C	1681	5	6	1	-76	26	25
ANDERSON, D	1621	3	4	3	-86	90	81
PFEFFER, D	1476	3	2	0	-30	31	29
WESTON, P	1398	3	2	2	13	66	46
LI, T	1266*	6	2	1	72	17	12

NORTH DIVISION

EXCALIBERS

NAME	RATING	SEASON			RATING CHANGE	TOTAL GAMES	RATED GAMES
		W	L	D			
BUERGER, E	2150	9	0	2	38	90	88
WONG, P	2019	5	0	1	33	67	67
KARLOVICS, S	1865	8	0	0	50	57	55
SULLIVAN, J	1859C	3	2	0	-3	106	104
GASTELU, E	1791	4	1	0	-17	65	62
DOBBINS, G	1749C	6	1	0	-9	125	122
GALVIN, J	1579	3	0	0	9	41	37
BROTSOS, J	1578C	7	3	0	-35	110	102
VOLPE, M	1275	1	6	0	-52	65	60
EDWARDS, S	1224W	1	4	0	-47	11	8
AMPULSKI, J	942W	3	4	0	0	13	9

FEL-PRO

NAME	RATING	SEASON			RATING CHANGE	TOTAL GAMES	RATED GAMES
		W	L	D			
MONZANI, A	1614*	1	6	1	-38	12	12
FELDMAN, A	1560W	4	2	1	0	7	5
FERNANDEZ, J	1460*	3	6	1	-23	14	13
POKATILOFF, W	1416*	1	6	2	-68	18	16
POLO, L	1410W	5	5	0	0	10	5
WEITZ, R	1315*	4	4	1	35	16	14
THOMPSON, R	1241W	1	4	1	-7	11	6
ERICKSEN	1136W	2	3	0	-73	14	9
ELIKAN, F	0000?	1	1	0	0	2	1
KURZAUSKI, R	0000?	2	3	0	0	6	1
GOLDBERG, S	0000?	0	1	0	0	1	0
HENDRICK, T	0000?	0	1	0	0	1	1
KASPER, J	981*	2	6	1	64	17	14
PETERS	?	1	1	0	0	6	3

INT'L TELEPHONE AND TELEGRAPH

NAME	RATING	SEASON			RATING CHANGE	TOTAL GAMES	RATED GAMES
		W	L	D			
CANDY, D	1914W	5	0	2	6	7	7
MARKOV, J	1856*	4	6	1	-98	11	11
BRIONES, M	1567*	6	3	1	65	16	13
BYCKOWSKI, M	1491	3	6	1	-34	51	48
POSNER, H	1252*	3	7	1	-55	25	21
JARASLOW, M	1123W	1	7	0	-21	14	8
PIETTY, H	0000?	1	1	0	0	2	1
BENITEZ, B	0000?	3	1	0	0	4	3
GILLS, J	0000?	0	4	0	0	4	3
SHEFT, M	?	0	2	0	0	8	4
BOURBINA, R	?	1	1	1	0	3	1

KEMPER INSURANCE

NAME	RATING	SEASON			RATING CHANGE	TOTAL GAMES	RATED GAMES
		W	L	D			
LEONG, G	1963	6	1	1	73	26	26
VANMEER, J	1928*	3	0	3	18	24	22
SKUJINS, P	1541W	3	2	0	5	14	9
HUGHES, N	1498*	5	5	0	-23	14	10
BARBER, H	1476*	3	4	0	14	18	18
BLOEDOW, P	1449*	5	4	1	1	23	20
JOHNSTON, D	1348W	4	4	1	42	9	7
MOSHER, G	1229W	3	2	0	22	13	7
KARGE, W	1211*	1	3	0	-40	14	10
CUMMUTA, P	1113W	5	4	1	0	15	5
LADD, B	0000?	1	1	1	0	3	2
THURESON, G	0000?	1	0	0	0	1	0
BANK, J	0000?	3	1	0	0	6	2
MUNKACSY	0000?	0	1	1	0	4	0
COX	?	0	0	0	0	4	3

MOTOROLA

NAME	RATING	SEASON			RATING CHANGE	TOTAL GAMES	RATED GAMES
		W	L	D			
GONCHAROFF, N	1804C	3	7	3	-16	241	241
NEUMARK, J	1725C	2	5	3	-10	164	162
GREENSPAN, P	1645C	7	3	0	12	125	118
OGASAWARA, R	1614C	7	4	1	-10	145	141
SUERTH	1602W	1	0	0	0	7	5
HENNING, J	1581	7	4	1	-35	108	103
VICK, H	1539*	2	1	0	7	23	21
MAGLIC, R	1511	0	3	0	-62	48	47
HERNANDEZ, D	1509	2	2	0	0	61	52
BLAZEVIC, C	1442W	8	2	0	0	10	5
BURIAN	1433	1	2	0	2	6	1
COMROE, R	1279*	5	0	2	98	18	11
WINDIS, R	0000?	0	0	0	0	0	0
TOLSON, M	0000?	1	1	0	0	2	2
DEPALMA, G	0000?	0	1	0	0	1	0
HEFFERNON, D	0000?	2	0	0	0	2	1
JOELSON, A	0000?	1	1	0	0	2	1

PROCON/UOP

NAME	RATING	SEASON			RATING CHANGE	TOTAL GAMES	RATED GAMES
		W	L	D			
STYS, A	1843	3	3	3	48	87	86
KOZACKY, J	1801	6	2	1	-4	84	82
SAIFULLAH, M	1646*	4	1	0	57	26	24
VITERI, M	1542	1	2	0	6	36	35
IMYTRENKO, S	1504	5	3	0	30	33	26
STUHLBARG, D	1359	3	7	0	-93	37	33
CHEVERESAN, S	1331*	5	3	1	49	21	12
STACY, P	0000?	1	0	0	0	1	1
BURNETT	0000?	0	1	0	0	3	1
MICHELSON, S	0000?	0	1	0	0	1	1
DULAY	0000?	1	1	0	0	3	3
CARLAND, R	0000?	0	1	0	0	1	1
GLOVER	0000?	0	0	1	0	3	2
SCOTT, R	0000?	0	1	0	0	2	0
SHAVER	0000?	0	1	0	0	3	0
CZARMATA	?	1	0	0	0	3	2
BROACH, R	?	2	1	0	0	3	2
FRANKE, F	?	1	1	1	0	5	4
SMITH, D	?	1	2	0	0	3	3
WILKEN, T	?	2	1	0	0	3	1

KITCHENS OF SARA LEE

NAME	RATING	SEASON			RATING CHANGE	TOTAL GAMES	RATED GAMES
		W	L	D			
ANDERSON, N	1786	1	4	4	-82	67	64
GREEN, H	1622	5	2	1	86	34	31
SIVULA, B	1543	4	5	1	63	62	58
SZATMARY, F	1355	3	5	1	31	47	43
HANSON, D	1333*	2	5	1	-34	24	16
RATAJCZAK, J	1232#	2	5	0	13	15	7
BERG, G	0000?	0	1	0	0	1	1
MISUINAS, R	0000?	0	2	0	0	4	2
TATRO, B	?	2	7	0	0	12	10
HERZMANN, K	?	0	1	0	0	2	2

## SIGNODE

NAME	RATING	SEASON			RATING CHANGE	TOTAL GAMES	RATED GAMES
		W	L	D			
STERN, H	1934	5	3	1	22	13	11
WHEELER, H	1821#	3	2	1	-18	6	6
BROSIG, A	1664	3	4	0	-74	89	88
STENSAKER, L	1544	6	4	0	88	89	85
KLEIN, A	1413	1	0	0	0	29	26
HUFF, S	1381	5	2	1	15	44	40
PASTURCZAK, RJ	1374	3	2	1	49	42	36
HOSKINS, E	1171*	4	3	0	-22	23	11
BROSIG, P	0000?	0	1	0	0	3	2
RIBALDO, D	0000?	1	2	0	0	3	1
HUPKA, S	0000?	2	1	1	0	4	3
EVANS, V	0000?	1	4	0	0	5	4
BLACKSTAD, W	0?	1	0	0	0	3	2
GECZY, P	?	1	0	0	0	4	2
CARACCI, A	?	0	2	0	0	5	2
WINNICKI, R	?	0	3	0	0	5	3

## TELETYPE KNIGHTS

NAME	RATING	SEASON			RATING CHANGE	TOTAL GAMES	RATED GAMES
		W	L	D			
TEGEL, F	2043C	4	3	5	-36	123	123
JACOBS, N	184B	5	4	4	-22	67	66
DURKEE, D	1737*	9	2	2	37	22	18
WAGNER, R	1707*	11	1	1	115	22	16
CHRISTIAN, R	1623*	5	3	1	20	18	15
PINSKY	1593#	3	1	1	0	8	5
KLEMM, J	1534	8	1	1	9	81	73
GILMER, J	1461	1	2	0	-27	96	94
ZUERCHER, J	1385#	5	3	0	-12	12	6
TURNBO, B	0000?	0	0	0	0	0	0
MONSER, E	0000?	2	0	0	0	2	1
HAKHEM, Z	0000?	0	1	0	0	1	1
MADHAV	?	0	2	0	0	4	3
OLIVER	?	0	0	1	0	5	2

## TELETYPE #2

NAME	RATING	SEASON			RATING CHANGE	TOTAL GAMES	RATED GAMES
		W	L	D			
CARUS, B	1523*	3	5	2	22	22	14
SUE, H	1447*	4	7	1	10	26	15
ERICSON, D	1314#	3	4	0	0	9	5
SHUKLA, P	1299*	3	8	0	-35	21	12
GERNES, L	1299*	3	7	3	-5	18	11
HOFF, W	0000?	2	1	1	0	4	3
FORSTER, R	0000?	0	3	0	0	3	0
DALKA, C	917#	0	8	2	-7	10	7
SOLOMON, N	?	0	0	1	0	1	



ZENITH-GLENVIEW

NAME	RATING	SEASON			RATING CHANGE	TOTAL GAMES	RATED GAMES
		W	L	D			
SCHULMAN, R	1836	3	3	3	33	97	96
AGPAWA, T	1583	2	5	2	-56	55	55
NINKOVIC, S	1513*	3	4	0	15	14	10
CONWAY, F	1442	1	5	1	-74	36	32
WEIGAND, J	1366*	1	3	0	-37	16	12
ROBINSON, B	1315#	3	4	0	0	7	5
LANGE, H	1264*	1	0	0	23	24	20
KARLSSON, T	1131#	1	7	0	0	8	7
SKINNER, S	0000?	1	7	0	0	8	6
NELSON	0000?	0	1	0	0	1	1

NEAR-WEST DIVISION

WE CHARGERS

NAME	RATING	SEASON			RATING CHANGE	TOTAL GAMES	RATED GAMES
		W	L	D			
WARREN, J	2033C	8	3	1	14	212	212
MARCOWKA, R	1855	3	2	1	-18	37	35
KUMRO, D	1733C	6	2	3	17	162	162
DOBK, K	1722C	9	2	1	20	178	176
RADAVICIUS, E	1660	9	1	2	14	82	73
FAJKUS, J	1592C	4	3	0	-51	124	122
SUIDERSKI, M	1417	6	4	0	-66	90	81
WETTERSTEN, H	1372	1	0	0	0	68	62
ZAPALIK	0000?	0	2	0	0	3	2

CPC INTERNATIONAL

NAME	RATING	SEASON			RATING CHANGE	TOTAL GAMES	RATED GAMES
		W	L	D			
URBAS, B	1545	1	2	1	1	28	26
DESJARDINS, J	1543	1	5	1	-19	54	51
ARMBRUSTER, F	1456*	2	2	1	3	21	18
BIAS, E	1332#	1	6	0	-24	7	7
STEJSKAL, J	1287	1	6	1	-63	51	44
MUDDE, J	1272	2	4	1	-73	32	25
GIBSON, L	?	0	2	1	0	12	6
EVANS, M	?	0	1	0	0	3	2

WE GAMBITEERS

NAME	RATING	SEASON			RATING CHANGE	TOTAL GAMES	RATED GAMES
		W	L	D			
KUBAL, C	1709*	5	1	2	111	21	19
STAMM, V	1586C	3	5	2	10	122	120
ALDJADO, M	1581	5	3	0	4	58	58
KIMBLER, C	1572	2	0	0	0	44	42
LICHT, J	1422	2	0	0	36	27	25
THOMAS, J	1395	4	1	0	0	53	46
STOCK, R	0000?	3	3	1	0	7	4
LEE, REGGIE	0000?	3	4	0	0	7	2
DUDEK, G	0000?	0	2	0	0	2	1
SCHMIDT, R	0000?	2	1	0	0	3	1
MEISINGER	?	1	4	0	0	14	10
CLARK, J	?	0	1	0	0	4	3

INT'L HARVESTER

NAME	RATING	SEASON			RATING CHANGE	TOTAL GAMES	RATED GAMES
		W	L	D			
SATTERLEE, D	1685*	2	3	1	32	24	24
PETERSON, U	1669#	4	4	0	-38	8	8
FEEL, A	1602#	2	1	1	10	10	9
RISTOFF, U	1299	0	4	1	-29	26	25
KANAS, U	1295*	2	4	1	-32	23	20
MOTYCKA, R	1263	3	3	1	-16	31	27
JACKLIN	1193*	0	1	0	-14	13	11
RAVANAM, S	0000?	1	3	1	0	5	4
DZIEDZIC	?	0	1	1	0	10	7
DANZA	?	1	2	0	0	9	4
DUENS	?	1	2	0	0	12	10
HARTMAN, G	?	1	3	0	0	7	2
GESIOR, A	?	0	3	0	0	7	4
LACHAPPELLE, G	?	1	1	0	0	8	6

ANL KNIGHTS

NAME	RATING	SEASON			RATING CHANGE	TOTAL GAMES	RATED GAMES
		W	L	D			
BENEDEK, R	2164	6	1	4	-77	96	95
YOUNG, C	1867	4	2	3	-28	52	49
PETERSON, M	1818C	8	0	1	65	119	118
APPELMAN, E	1648	1	3	0	-49	55	55
KELLOGG, K	1631	6	2	1	48	82	80
DEVER, D	1578	8	1	0	102	71	69
COOVER, K	1414*	7	3	0	80	26	21
KINSELLA, G	1411	4	1	0	44	69	64
BURBA, K	1405	6	2	1	57	86	80
DRAGEL, G	1298	1	4	0	-44	55	52

BTL PLAYERS

NAME	SEASON RATING	SEASON			RATING CHANGE	TOTAL GAMES	RATED GAMES
		W	L	D			
WARD, C	1631C	2	0	1	21	115	115
SAMELSON, C	1616*	2	4	0	2	13	12
DEAK, T	1517*	1	6	0	-60	14	11
DEWITT, G	1331*	2	4	2	-24	24	23
THOMAS, G	1299*	2	5	0	-27	18	16
HERBER, R	0000?	0	1	0	0	1	0
ANDERSON, C	0000?	4	1	1	0	6	4
OPPERMAN, D	0000?	1	2	0	0	3	1
HILTNER	?	0	1	0	0	4	1

WESCOM

NAME	SEASON RATING	SEASON			RATING CHANGE	TOTAL GAMES	RATED GAMES
		W	L	D			
GRAFT, D	1703	1	4	3	-54	28	27
POPPS, W	1563*	4	4	1	-3	18	15
MEDINGER, R	1251*	0	3	1	-5	13	10
MAY, G	1189*	1	5	3	17	15	13
SWANSON, J	0000?	0	1	0	0	1	1
HOESLY, M	0000?	0	1	0	0	1	0
SCHORR, I	0000?	2	1	1	0	4	2
FULLER, E	0000?	1	2	0	0	5	2
ENRLICH, E	?	1	6	0	0	11	7
FORFEIT	?	0	0	0	0		



Faint, illegible text or markings at the bottom right corner of the page.

# ILLINOIS CHESS BULLETIN

Official Publication of the Illinois Chess Association, a USCF Affiliate

The ILLINOIS CHESS BULLETIN is published 6 times per year.

The Illinois Chess Association is a not-for-profit organization dedicated to the promotion of chess in Illinois. Magazine features include up-to-date reporting on chess tournament activity in Illinois, with many games annotated by Illinois chess masters and experts. The ILLINOIS CHESS BULLETIN gives advance notice for major chess tournaments in our state and provides a list of chess clubs.

## SUBSCRIBE TO THE ILLINOIS CHESS BULLETIN

Subscription to the ILLINOIS CHESS BULLETIN includes a 1 year membership in the Illinois Chess Association, an affiliate of the U.S. Chess Federation. As well as publishing the ILLINOIS CHESS BULLETIN, the ICA organizes chess tournaments in Illinois and serves as a federation of chess clubs and other chess organizations throughout the state. ICA officers donate their time; no one is paid.

During the last 2 years since Helen Warren became Editor for the ICB, the ILLINOIS CHESS BULLETIN, as the premier state chess publication in the United States, has received numerous chess journalism awards. By subscribing to the ICB, you are not only assuring yourself of the best chess news coverage for Chicago and Illinois. You are also helping to support chess in Illinois.

Regular 1 year subscription is \$5. Patron Membership is \$25.

Send subscriptions to :

HELEN WARREN, EDITOR, ILLINOIS CHESS BULLETIN, P.O. BOX 70,  
WESTERN SPRINGS, ILLINOIS 60558

NAME \_\_\_\_\_

ADDRESS \_\_\_\_\_

CITY & ZIPCODE \_\_\_\_\_

ARE YOU A USCF MEMBER ? \_\_\_\_\_ RATING \_\_\_\_\_

Please make your check payable to the Illinois Chess Association.

# \$5 REGULAR MEMBERS \$25 PATRON



*[Faint, illegible text or markings at the bottom right corner.]*



STATEMENT OF CHARGES



For those teams which have not received their statement of charges, or who have lost or misplaced it, we provide the following duplicate. For efficient operation of the CICL, it is important that all funds be received promptly.

TO: Team Captains

FROM: CICL Treasurer

SUBJECT: Statement of Charges, 1980-81 Season

Please complete the appropriate blanks, determine your team's charges, and mail your check. Please pay this bill promptly and make checks payable to the Chicago Industrial Chess League.

Team Name: \_\_\_\_\_

To receive bulletin(s):

Name	Address
_____	_____
_____	_____
_____	_____

Annual dues for 6-player team	\$22.00
League bulletin subscription (one required per company)	10.00
One required Awards Banquet ticket per team	10.00
Each additional bulletin sub- scription @ \$4.50	_____
<b>TOTAL REMITTANCE</b>	<b>\$ _____</b>

Send to CICL Treasurer:

Jim Brotsos  
6563 N. Tahoma Ave.  
Chicago, IL 60646  
647-7575 (work)