

Chicago Industrial Chess League



Bulletin 5 Volume 30
February 1987

This is your last reminder to sign up for the simultaneous exhibition with International Grandmaster Arthur Bisguier.

WHEN? Monday March 9, at 7 PM

WHERE? Amoco Research Center (Cafeteria)

COST? \$10 in advance, \$12 at the door

Mail advance entries to Wes Underwood, Department of Chemistry, Wheaton College, Wheaton, IL 60187.

Amoco is located on Warrenville Road, about 1 mile west of Naperville Road. Exit I-5 at Naperville Road; go North 1 block to Warrenville Road; go West to Amoco.

Bring along a good size, Staunton design chess set.

Last year this event was very enjoyable. Arthur Bisguier enjoys playing simuls, and will allow you to choose his first move for him. So you can prepare a favorite opening to play, and try it out against him. There were 23 players last year -- 2 winners and 3 draws. Support this CICL event and play an IGM---see you there!

NORTH DIVISION TOP TEN

STEVANOVIC, M	UOP	2121
CREWSE, L	EXMPL	2111
WONG, P	EXMPL	2101
MCNEIL, B	MTRLA	2037
TEGEL, F	ATTSK	1994C
SIWEK, M	KEMPR	1964
LEONG, G	EXCAL	1958
BUERGER, E	EXCAL	1937C
BLOOM, B	MTRLA	1891
JACOBS, N	ATTSK	1888C

EAST DIVISION TOP TEN

CZERNIECKI, A	ALUMN	2244C
REYES, R	SEARS	2215C
HUTTAR, C	FNBK	2045
WEIHMILLER, W	AMCRP	2024
LATIMER, E	SEARS	1959C
WIRTSCHAFTER, D	ALUMN	1937
COX, M	ALUMN	1935
SALKAUSKAS, A	FNBK	1882
SILVERBERG, A	FNBK	1872
GOLLA, R	SEARS	1855C

NEAR WEST DIVISION TOP TEN

BENEDEK, R	KNIGHT	2059C
WARREN, J	CHRGR	1987D
MUSGRAVE, C	EXECU	1897
YOUNG, C	KNIGHT	1867C
STINSON, M	DRGNS	1840
SEDLOCK, E	EXECU	1772
SAMELSON, C	ROCKW	1756
SWANSON, V	EXECU	1721
KUMRO, D	CHRGR	1709D
DECMAN, S	KNIGHT	1677C

FAR WEST DIVISION TOP TEN

STREETS, D	ROOKS	2081C
LUDWIG, T	INDNS	2030
NAGLE, M	AMOCO	1934
SAGALOVSKY, L	FERMI	1915
WHEATLEY, D	TYROS	1882
BERRY, G	ROOKS	1881D
WEBSTER, D	INDNS	1842
VAN DER BIJ, J	FERMI	1839*
STOLTZ, B	TYROS	1835
JORGENSEN, B	ROOKS	1809*

MOST IMPROVED PLAYERS

BLACKMON, E	INDNS	93
SIWEK, M	KEMPR	91
JORGENSEN, B	ROOKS	77
LITVINAS, A	ALUMN	63
EDWARDS, S	EXMPL	61
FRANEK, M	ALUMN	57
WAGNER, RA	MTRLA	54
STINSON, M	DRGNS	53
KARLOVICS, S	EXCAL	52
GARESCHE, P	EXECU	50

A note to the Near West Division captains...

The captain of the Bell Labs Dragons, Wayne Brandt, has a new phone number. He can be reached at the office at 979-1254.

NORTH DIVISION 02/01/87

TEAM NAME	W	L	D	GAME POINTS	MATCH POINTS	PCT
EXCALIBURS	4	1	0	18.0	4.0	0.800
MOTOROLA	3	1	1	18.5	3.5	0.700
EXEMPLARS	3	0	1	14.0	3.5	0.875
AT&T SKOKIE	2	0	2	17.0	3.0	0.750
KEMPER INSURANCE	3	2	0	16.0	3.0	0.600
FEL-PRO	1	4	0	9.5	1.0	0.200
UDP PROCESS DIV.	0	4	1	9.0	0.5	0.100
ZENITH-GLENVIEW	0	4	1	9.0	0.5	0.100

EAST DIVISION 02/01/87

TEAM NAME	W	L	D	GAME POINTS	MATCH POINTS	PCT
ALUMNI CENTRAL	3	0	0	15.0	3.0	1.000
SEARS	2	0	1	11.5	2.5	0.833
AMOCO CORP.	1	2	0	7.5	1.0	0.333
FIRST NAT'L BANK	1	1	0	5.0	1.0	0.500
CONTINENTAL BANK	0	2	1	6.0	0.5	0.167
CHI BD OF OPTIONS EXCH	0	2	0	3.0	0.0	0.000

NEAR WEST DIVISION 02/01/87

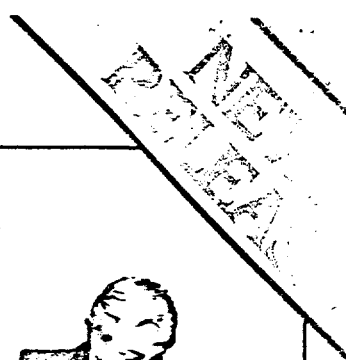
TEAM NAME	W	L	D	GAME POINTS	MATCH POINTS	PCT
AT&T CHARGERS	4	0	0	18.5	4.0	1.000
ARGONNE KNIGHTS	4	0	0	18.5	4.0	1.000
ROCKWELL INT'L	3	2	1	18.0	3.5	0.583
BELL LABS DRAGONS	3	1	1	15.5	3.5	0.700
EXECUTIONERS	2	3	0	14.5	2.0	0.400
A & B RADIO	0	5	0	10.5	0.0	0.000
J. I. CASE	0	5	0	6.5	0.0	0.000

FAR WEST DIVISION 02/01/87

TEAM NAME	W	L	D	GAME POINTS	MATCH POINTS	PCT
FERMILAB	4	0	0	16.5	4.0	1.000
ARGONNE ROOKS	3	1	0	14.0	3.0	0.750
BELL LABS INDIANS	2	2	0	11.0	2.0	0.500
AT&T TYROS	1	1	1	9.5	1.5	0.500
AMOCO RESEARCH LABS	1	3	0	9.5	1.0	0.250
WHEATON COLLEGE	0	4	1	11.5	0.5	0.100

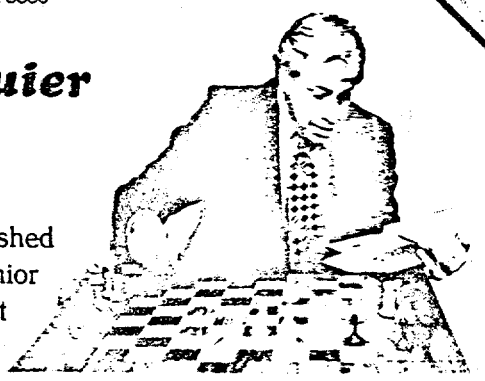


186 ROUTE 9W • NEW WINDSOR, NY 12550 • (914) 562-8350



Grandmaster Arthur Bisguier

International Grandmaster Arthur Bisguier has had a long and distinguished chess career dating back to the forties when he was twice National Junior Champion and several times Manhattan Chess Club Champion. Since that time the roster of players he has beaten or drawn reads like a Who's Who of Chess and includes virtually every leading grandmaster in the world.



Five-time U.S. Open Champion

In 1950 Bisguier won the U.S. Open for the first time and also won or tied for first in 1956, 57, 59, and 69, finishing only half a point from the top in many other years. He scored his first international victory at Southsea, England, in 1950. Even while in military service, he squeezed in some chess, scoring first in Vienna in 1952 and playing for the United States team in the Helsinki Olympiad of 1952.

Returning home from the Army, he won the Hollywood Pan American Championship in 1954. Later that year, he won the Challengers' Tournament in Philadelphia and the U.S. Championship. He has played in most of the succeeding U.S. Championships, and in the 1962-63 event, he led the field until the final round when he characteristically succumbed to Bobby Fischer and had to content himself with second place.

Bisguier was awarded the International Master title in 1952 and the International Grandmaster title, the highest of all, in 1957, when this title was rare indeed. He has participated in two Interzonals, five Olympiads, innumerable international tournaments, two team matches against the Soviet Union, and one against Yugoslavia. He has also been very successful in domestic tournaments, at one time or another winning outright or tying for first in every major Swiss-system event, including the prestigious Lone Pine Tournament, the National Open, and the World Open. In 1979, he won the first American Grand Prix, having accumulated the best results in the year-long series of major open tournaments.

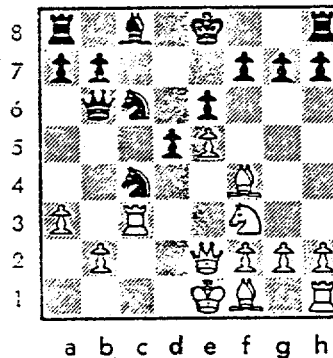
Mr. Bisguier is Grandmaster-on-Staff for the U.S. Chess Federation and Technical Advisor to the monthly magazine *Chess Life*. In addition, he continues as a popular and active chess lecturer and simultaneous exhibitor, playing as many as 100 opponents at a time. He has also been a frequent contributor to chess magazines, encyclopedias, and books, as well as having co-authored, with Andrew Soltis, *American Chess Masters From Morphy to Fischer*. He has appeared often on television and hosted his own show during the Fischer-Spassky World Championship Match.

His other activities have included work in accounting, computer programming, technical writing, and magazine editing. He was married in 1959, has two daughters, and resides with his family in the Catskill Mountains at Rock Hill, New York.

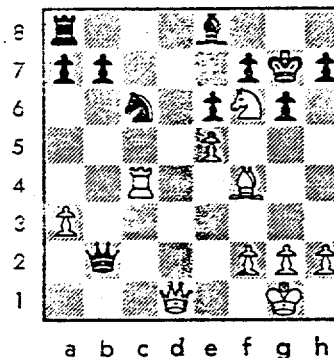
Following is a game between D. Sajkowski (AMOCO - UNR) and B. Smith (TYROS - 1513), submitted by Dan with notes for publication:

1. e4 c5 2. Nf3 Nf6 (Black allows White to steer into an infrequently played variation of the Sicilian.) 3. e5 Nd5 4. c4 Nb6 5. d4 cxd4 6. Nxd4 (Better here is 6. Qxd4 Nc6 7. Qe4) Qc7 7. Bf4 (Sacrificing the c-pawn for development) Nxc4 8. Qe2 (Now not 8. Qc2 because of 8... Qa5+) 9. Nc3 (Possible also is 9. exd6 Nxd6 10. Nc3) e6 10. Rc1 Nc6 11. Nf3 Bb4 (This Bishop is better at e7 to defend the K-side) 12. a3 Bxc3 13. Rxc3 Qb6 (See diagram) 14. Qc2! [Now 14... Nxb2

15. Rb3 or 14... Qxb2 15. Rxc4 Qxa3 16. Rxc6 bxc6 17. Qxc6+ or 14... Nd4 15. Nxd4 Qxd4 16. Bxc4 Qxf4 17. Bb5+ when Black loses his right to castle, are all bad for Black. Consequently, White regains the pawn with a better position.] 0-0 15. Bxc4 dxc4 16. Rxc4 Rd8 17. 0-0 Bd7 18. Ng5 (Forcing a K-side weakness. Now 18... h6 19. Qh7+ Kf8 20. Qh8+ Ke7 21. Qxg7 hxg5 22. Bg5+ Ke8 23. Qg8 mate. A line pointed out to me by my opponent.) g6 19. Rd1 Be8 20. Ne4 (White drops a pawn, but not



without compensation) Rxd1+ 21. Qxd1 Qxb2 22. Nf6+ Kg7 [Of course not 22... Kf8 23. Bh6+ Ke7 24. Qd6 mate. Also 22... Kh8 23. Qd6 Bd7 (23... Kg7 24. Bh6+! Kxh6 25. Qf8+ Kg5 26. f4+ Kf5 27. g4 mate) 24. Nd7 Rd8 25. Bg5 wins material. But my colleague Mike Nagle found the even better move 24. Qxd7 Rd8 25. Rxc6!! (if 25... Rxd7 26. Rc8+ Kg7 27. Rg8 mate)] See diagram. 23. Bh6+!? (Sacrificing a Bishop -- but it doesn't lead further than a draw) Kxh6! (After 23... Kh8 24. Qd6 Bd7 25. Qxd7 as in previous note) 24. Rh4+ Kg7 (Of course not 24... Kg5 25. Qg5 mate) 25. Rxh7+ Kf8 26. Qd6+ Ne7 (Black's 26... Ne7 was overlooked by White when 23. Bh6+. Now White, down a Bishop, and tired (!), settles for perpetual check.) 27. Rh8+ Kg7 28. Rh7+ DRAW.



For me this was an exciting return to OTB play after an eleven year hiatus. My thanks to Mike Nagle for looking over my analysis and making a number of suggestions.

Report on the 1987 Midwest Amateur Team Championship:

The Midwest Team Championship included two teams fielded (subsidized) by the CICL. "Be Reti with a Crying Tail," which won the most original name award, was a team of Argonne players Dave Levine, Dave Streets, Darren Bolden, Greg Berry, and alternate Steve Decman. They scored 3.5 - 2.5, finishing in a tie for the best industrial team award, although the ZPR Knights, a team including CICL member Lynn Crewse, won on tiebreak points. Greg Berry tied with several others at 4.5 - 1.5 for the best board 4 score. He did not emerge with the prize on tiebreak points however.

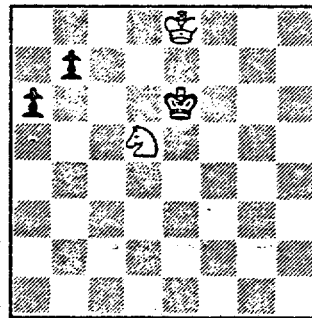
"CICLNOR" scored 3 - 3, just 1/2 point behind Argonne. Team members included Frank Tegel, Ed Buerger, Gee Leong, and Wes Underwood. Wes Underwood also scored 4.5 - 1.5, to be part of the tie for the top board 4 award. He too though did not have enough tiebreak points to capture the prize.

Several other CICL members were at the event, on teams representing various other groups. There were 32 teams participating, with average ratings spanning from 2199 down to below 1200.

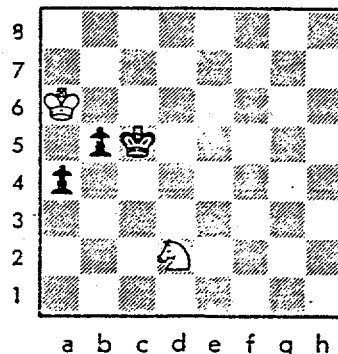
The event was held at the Hyatt Regency OHare Hotel. Playing conditions were marvelous, and hotel accomodations were luxurious as well. Thanks are extended to the CICL for support of the two teams mentioned above.

In a recent match between AMOCO and WHEATON, there was a game between Dan Sajkowski (AMOCO) and Dave Staube (WHEAT). It was adjourned upon reaching the following position:

From the diagrammed position, the game continued with the sealed move (which upon analysis seemed to be White's best chance) 1. Nc3. The game then continued 1... b5 2. Kd8 Kd6 3. Ne4+ Kd5 4. Nd2 Kc5 5. Kc7 a5 6. Kb7 a4 7. Ka6 All of these moves seem best for both sides. It was agreed afterwards that with correct play for Black, it is indeed a win, but it is still very easy for Black to go wrong. Consider the position resulting from the above moves, after 7. Ka6 (diagram at right):



7... a3! (not 7... b4 8. Ka5 a3 9. Ka4 a2 10. Nb3+ Kc4 11. Na1 Kc3 12. Nb3 drawn; and not 7... Kb4 8. Nb1! a3 [of course not 8... Kb3 9. Kxb5, and not 8... Kc4 9. Na3+ followed by 10. Nxb5, and not 8... Kc5 9. Ka5 Kc4 10. Na3+] 9. Nxa3 Kxa3 10. Kxb5 drawn) 8. Ka5 a2! (again not 8... b4 which transposes into note above) 9. Nb3+ Kc4 10. Na1 Kc3 11. Kxb5 Kb2 and wins.



NAME	TEAM	W	L	D	RATING	NAME	TEAM	W	L	D	RATING
AFSHARI, A	DRGNS	0	1	0	0000?	DAWSON, T	ROCKW	1	0	0	1105*
AGPAWA, T	ZENTH	0	1	0	1581	DECMAN, S	KNGHT	2	1	0	1677C
ANDERSON, N	EXCAL	3	1	1	1736C	DEWITT, G	ROCKW	3	0	0	1445
ANDRESEN, T	EXCAL	2	1	0	1843C	DEZONNO, T	ROCKW	0	1	0	0000?
ANGLIN, B	SEARS	2	1	0	1530*	DIXON, R	CBOPE	2	0	0	1572
ANTHONY, M	FNBK	1	1	0	0000?	DOBR, K	CHRGR	3	1	0	1567D
ASHBROOK, R	FLPRO	1	1	0	853*	DOUGHTY, J	WHEAT	0	2	0	0000?
ATKINSUN, J	AMCRP	0	1	2	1540*	DUKES, D	SEARS	1	1	0	1392#
BAKER, B	FLPRO	1	5	0	1000	DURKEE, D	ATTSK	4	0	0	1725
BARTON, J	WHEAT	0	1	0	1405#	EASLEY, K	INDNS	1	1	0	1805#
BARVISH, A	ZENTH	1	1	1	1738	EDWARDS, S	EXMPL	3	1	0	1274
BAURAC, D	KNGHT	4	0	0	1650	EFRON, D	ROCKW	1	0	0	0000?
BECKLEY, S	INDNS	1	1	0	0000?	EUSTACE, D	DRGNS	0	1	0	0000?
BENEDEK, R	KNGHT	2	0	0	2059C	FAHRENHULTZ, S	MTRLA	3	0	0	0000?
BERRY, G	ROOKS	2	0	2	1881D	FAJKUS, J	CHRGR	1	0	0	1585C
BEUNING, B	INDNS	0	5	0	0000?	FARRELL, D	WHEAT	1	0	0	1232#
BLACKMON, E	INDNS	4	1	0	1417*	FELDMAN, A	FLPRO	0	2	1	1430
BLAZIE, J	TYROS	0	1	0	1538	FISCHLER, M	FERMI	1	0	0	1375
BLOEDOW, P	KEMPR	3	2	0	1413	FOGARTY, D	EXMPL	1	1	0	1594*
BLOOM, B	MTRLA	2	3	1	1891	FRANEK, M	ALUMN	4	0	0	1771
BLOOMFIELD, R	ATTSK	0	1	0	0000?	GAINES, I	FERMI	4	1	0	1770C
BOOTH, D	AMOCO	0	3	0	1452	GAPASIN, C	CONBK	0	2	0	0000?
BRANDT, W	DRGNS	1	3	0	1137#	GARESCHE, F	EXECU	3	1	0	1505*
BRIONES, M	UOP	0	5	0	1518	GARLAND, G	KEMPR	2	2	1	1638
BRUTSOS, J	EXCAL	2	1	0	1567C	GERNES, L	ATTSK	1	0	0	1485
BROZOVICH, J	TYROS	1	0	0	1714C	GHULAM, S	ZENTH	0	1	0	0000?
BUCHANAN, R	FNBK	0	1	0	1493	GLIVETTI, M	AMOCO	0	2	0	0000?
BUERGER, E	EXCAL	0	4	3	1937C	GOLLA, R	SEARS	3	0	0	1855C
BURBA, K	KNGHT	1	0	0	1378C	GONCHAROFF, N	MTRLA	2	2	1	1692D
BURIAN, D	EXMPL	2	1	2	1564	GOY, R	CONBK	0	1	0	0000?
BURK, R	ALUMN	2	0	0	1565C	GOYETTE, R	CBOPE	0	1	0	0000?
CAMPBELL, C	AMCRP	0	3	0	1197*	GRAFF, R	UOP	3	2	0	1288*
CARPENTER, P	ATTSK	2	2	0	1432	GREEN, D	ROOKS	2	1	0	1612C
CARTER, R	EXECU	1	2	0	0000?	GRYPARIS, J	MTRLA	2	2	0	1294*
CHAN, H	ALUMN	1	2	0	1609	HAHNE, D	DRGNS	3	2	0	1343#
CHARKOVSKY, R	FNBK	1	0	0	0000?	HALL, M	WHEAT	1	2	0	1056#
CHERNOMORDIKOW	SEARS	0	1	2	1463#	HALLMAN, W	JCASE	2	0	0	1131*
CHEVERESAN, S	UOP	1	3	1	1439	HANLEY, M	JCASE	0	1	0	0000?
CHRISTIAN, R	ATTSK	3	0	0	1772	HARRINGER, R	TYROS	1	1	0	1612C
CIBA, F	SEARS	1	0	0	1405	HARRISON, T	WHEAT	3	3	0	1200#
CIFOLLA, J	MTRLA	0	1	0	1654*	HEALY, S	EXECU	2	1	1	1272*
COLLINS, P	MTRLA	0	1	0	0000?	HEILKER, C	ROCKW	0	1	0	0000?
CONWAY, F	ZENTH	0	1	0	1332	HESS, B	FLPRO	1	1	0	1572*
COX, M	ALUMN	1	1	1	1935	HICKS, C	INDNS	1	1	0	1292#
CREWSE, L	EXMPL	4	0	0	2111	HODGES, H	FERMI	1	1	0	1515#
CRUZ, R	FLPRO	1	2	0	1267*	HOLM, B	AMOCO	2	3	0	1555
CUMMUTA, P	KEMPR	1	3	0	1228	HUGHES, N	KEMPR	3	2	0	1590
CZERNIECKI, A	ALUMN	3	0	0	2244C	HUMPF, R	RADIO	2	2	0	0000?
DAVIDOFF, G	KNGHT	1	1	1	0000?	HUTTAR, C	FNBK	0	1	0	2045
DAWSON, J	KNGHT	1	0	0	0000?	ILANGA, R	FLPRO	2	0	0	0000?

? - UNRATED
 # - 5 TO 9 RATED GAMES
 * - 10 TO 24 RATED GAMES

C - CENTURY CLUB MEMBER
 D - DOUBLE CENTURION

NAME	TEAM	W	L	D	RATING	NAME	TEAM	W	L	D	RATING
JACOBS, N	ATTSK	4	0	0	1888C	MUSGRAVE, C	EXECU	1	3	0	1897
JOHNSON, M	MTRLA	0	2	0	1024#	NAGLE, M	AMOCO	2	1	2	1934
JONES, B	ROCKW	3	0	0	0000?	NEUMARK, J	MTRLA	3	1	0	1757D
JONES, J	CBOFE	0	1	0	0000?	NINKOVIC, S	ZENTH	1	1	0	1480
JORGENSEN, B	ROOKS	5	0	0	1809*	NOVY, J	MTRLA	0	1	0	0000?
JOSEPHSON, D	WHEAT	2	0	0	0000?	O'BRIEN, D	UOP	1	0	1	1023*
KALIHER, C	FERMI	2	2	1	1795	O'DELL, DW	RADIO	1	3	1	1427
KANAS, W	JCASE	1	3	0	1260	OGASAWARA, R	MTRLA	0	1	0	1564D
KARLOVICS, S	EXCAL	4	0	0	1870C	OSTERLUND, R	EXCAL	3	1	0	1804
KEIL, C	WHEAT	1	0	0	0000?	PAAUWE, N	AMOCO	0	1	0	1365*
KELLOGG, K	KNIGHT	2	1	1	1647C	PARADAN, E	CONBK	2	2	0	1570*
KELLY, S	DRGNS	2	1	0	1333*	PARIKH, P	DRGNS	0	2	0	0000?
KINSELLA, G	KNIGHT	1	1	0	1450C	PARKER, L	TYROS	1	0	0	1753
KLINEFELTER, H	JCASE	2	2	0	1399*	PARKER, M	ROCKW	0	2	0	0000?
KOGAN, G	CONBK	0	2	2	1686#	PODGORNIK, P	ROCKW	0	1	0	0000?
KOMUROUSKI, R	WHEAT	3	0	0	0000?	POKATILOFF, W	FLPRO	0	1	0	1326
KRAKAU, H	EXMFL	1	0	0	1883	POPPS, W	ROCKW	0	1	1	1589
KRAUSE, J	FNBK	1	0	0	0000?	PROKSCH, R	ROOKS	0	0	0	0000?
KROEKER, K	WHEAT	0	3	0	0000?	RADAVICIUS, E	CHRGR	3	0	1	1585C
KULINER, M	FNBK	0	0	0	0000?	RAFACZ, T	ROCKW	3	3	0	1484*
KUMICICH, M	CBOFE	0	2	0	0000?	RAHMANIAN, S	ROCKW	0	2	0	0000?
KUMRO, D	CHRGR	3	0	1	1709D	REDEY, E	ROOKS	0	2	0	1038*
LAHAM, N	AMCRP	1	1	0	0000?	REID, C	JCASE	0	3	0	0000?
LANDRY, H	CBOFE	0	1	0	0000?	REYES, R	SEARS	0	0	1	2215C
LANNOYE, D	SEARS	2	0	0	1363#	RIBOT, A	CBOFE	0	1	0	0000?
LASKY, J	RADIO	2	2	0	1221*	RINGENBERG, T	AMOCO	2	1	1	1366#
LASKY, N	RADIO	0	3	1	1429	ROSING, G	CBOFE	1	1	0	1405#
LATIMER, E	SEARS	0	0	2	1959C	ROSLEY, D	DRGNS	3	1	0	1669
LEMS, W	SEARS	0	1	0	1487C	RZESZUTKO, R	ALUMN	2	0	0	1828
LEUNG, G	EXCAL	1	1	1	1958	SABADOS, P	AMOCO	1	2	0	1002*
LEWIS, L	ZENTH	0	1	0	0000?	SAGALOVSKY, L	FERMI	0	1	0	1915
LITVINAS, A	ALUMN	4	0	0	1667	SAJKOWSKI, D	AMOCO	0	0	1	0000?
LUDWIG, T	INDNS	1	2	1	2030	SALA, S	FERMI	0	1	0	0000?
MANASTER, R	ATTSK	1	1	1	1866	SALKAUSKAS, A	FNBK	0	1	1	1882
MANZKE, R	ATTSK	0	1	1	1170*	SAMELSON, C	ROCKW	3	2	0	1756
MARTINSUNS, B	MTRLA	3	1	0	1853	SAPITRO, J	FNBK	0	2	0	1576
MCCLENDON, L	CONBK	1	1	0	1367*	SATTERLEE, D	JCASE	0	5	0	1588
MCDUGALL, A	KEMPR	0	1	0	0000?	SAWDO, E	JCASE	0	4	1	1406*
MCHARG, C	DRGNS	0	1	0	1289*	SCHOONVELD, S	WHEAT	2	2	1	0000?
MCKENZIE, J	WHEAT	0	2	0	1274#	SCHULMAN, R	ZENTH	1	2	2	1865C
MCNEIL, B	MTRLA	3	1	2	2037	SEDLOCK, E	EXECU	1	0	1	1772
MCQUINN, J	ROCKW	1	2	1	1419	SHACHTER, J	INDNS	3	2	0	1509*
MICKLICH, F	UOP	2	2	0	1645	SHAFF, R	TYROS	1	2	0	1470C
MIKULECKY, B	RADIO	0	4	1	1413	SHOREY, S	UOP	0	1	0	0000?
MITCHELL, T	CBOFE	0	2	1	1276#	SIEGEL, R	CONBK	1	2	1	1441
MOODY, L	CONBK	2	0	0	0000?	SILVERBERG, A	FNBK	1	1	0	1872
MOORE, D	EXECU	2	1	1	1285	SIWEK, M	KEMPR	4	0	2	1964
MOTTA, H	FERMI	2	0	0	0000?	SKINNER, S	ZENTH	1	3	0	1119
MUELDER, R	FNBK	0	0	1	0000?	SKULSKI, I	ZENTH	2	2	3	1626
MUNOZ, A	DRGNS	0	1	0	1238	SMITH, BR	TYROS	2	0	1	1513

? - UNRATED
- 5 TO 9 RATED GAMES
* - 10 TO 24 RATED GAMES

C - CENTURY CLUB MEMBER
D - DOUBLE CENTURION

NAME	TEAM	W	L	D	RATING	NAME	TEAM	W	L	D	RATING
SOLEYMANI, S	ROCKW	0	1	0	0000?	UNDERWOOD, W	WHEAT	1	4	2	1754
SOMBONG, M	CONBK	0	2	1	1801	UNRUH, J	DRGNS	0	0	1	1177
SOPRYCH, T	AMCRP	1	1	1	1532	VAN DER BIJ, J	FERMI	0	0	2	1839*
SPANGLER, M	AMOCO	1	0	0	1377	VAN MEER, J	KEMFR	0	0	1	1804
SPIEGEL, L	FERMI	4	1	0	1740	WAGNER, RA	MTRLA	3	0	0	1434*
STAMM, V	CHRGR	0	1	1	1595C	WALKER, P	WHEAT	3	4	0	1643*
STEVANOVIC, M	UOP	2	3	1	2121	WALKER, R	FERMI	2	0	1	1366C
STINSON, M	DRGNS	3	1	0	1840	WARD, C	DRGNS	3	0	0	1640C
STOLTZ, B	TYROS	2	0	1	1835	WARREN, J	CHRGR	4	0	0	1987D
STRAUBE, D	WHEAT	1	4	0	1317*	WEBSTER, D	INDNS	0	1	0	1842
STREETS, D	ROOKS	2	0	1	2081C	WEIGAND, J	ZENTH	1	0	0	1275
STUHLBARG, D	UOP	0	5	0	1348	WEIHMILLER, W	AMCRP	2	0	1	2024
SUERTH, F	EXMPL	1	2	1	1682	WEISNER, T	RADIO	0	2	2	1180
SULLIVAN, J	EXCAL	2	4	0	1799C	WEITZ, R	FLPRO	0	3	3	1604
SWANSON, V	EXECU	2	3	0	1721	WENTLING, C	AMCRP	1	1	1	1488
SWIDERSKI, M	CHRGR	1	0	0	1360C	WHEATLEY, D	TYROS	0	1	0	1882
TASKER, I	ROOKS	0	1	1	0000?	WIENCEK, T	ROOKS	0	2	0	1250*
TAYLOR, J	FLPRO	0	1	0	0000?	WILSON, A	FNBK	0	1	0	1600
TEGEL, F	ATTSK	0	1	3	1994C	WINDGRAD, Y	INDNS	1	0	1	0000?
THOMAS, G	TYROS	0	0	1	1373	WIRTSCHAFTER, D	ALUMN	1	0	0	1937
THOMAS, J	CHRGR	2	0	0	1515	WONG, F	EXMPL	3	0	2	2101
THOMPSON, R	FLPRO	0	2	0	1100*	WROBEL, J	AMOCO	0	1	0	1654
TOGAMI, P	JCASE	0	2	0	0000?	YOUNG, C	KNIGHT	1	0	1	1867C
TURPIN, S	INDNS	1	1	0	0000?	ZAROMB, S	ROOKS	1	0	0	1476*
ULMISHEK, G	ROOKS	0	2	0	0000?	ZOELLNER, J	CONBK	0	3	0	1116*

? - UNRATED

- 5 TO 9 RATED GAMES

* - 10 TO 24 RATED GAMES

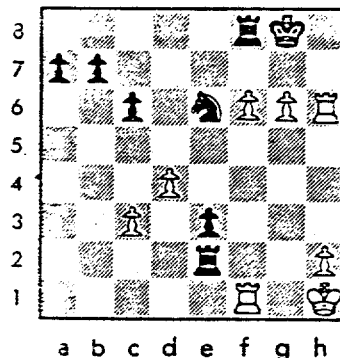
C - CENTURY CLUB MEMBER

D - DOUBLE CENTURION

Regarding the game between Sagalousky (FERMI) and Blackmon (INDNS), published and annotated in the January issue...

Additional comments by Steve Decman regarding the position in the diagram at right, after 37... e3:

How about 38. Rh7 threatening f7+...
 38... Ng5 looks forced, then 39. Rg7+
 Kn8 40. Rxb7 (or Re7 threatening f7
 and Re8) The threat after 40 Rxb7 is
 g7+ of course. If 40... Rxf6 41. Rxf6
 Rf2 42. Rxf2 exf2 43. Kg2! Black's
 best chance after 40 Rxb7 may be Kg8
 when 41. f7+ doesn't work because of
 Kg7. But white can repeat the position
 after 40... Kg8 with 41. Rg7+ Kn8 followed by 42. Rxa7 Kg8 43. Rg7+ Ka8
 44. Re7 or Rc7.



Black's position isn't holding out so well. It looks as though White's two connected pawns on the 6th are indeed worth a Rook! Thanks for the suggested improvements for White in this position, Steve!

04-DEC-86 A131 TUDS
ROUND 4 BD

1	2	3	4
1 WHEATLEY, D	1874	1874	2024
2 STOLTZ, B	1553	1553	1741
3 PARKER, L	1746	1459	1705
4 HARRINGER, R	1506	1375	1690
5 SMITH, BR	1513	0	1427
6 SHAW, R	1467	1005	1294

22-JAN-87 ZENITH-BLENVIEW
ROUND 5 BD

1	2	3	4
1 SCHULMAN, R	1874	1874	2024
2 SKULSKI, I	1553	1553	1741
3 SKULSKI, I	1459	1459	1705
4 NINKOVIC, S	1375	1375	1690
5 SKINNER, S	1513	0	1427
6 LEWIS, L	1467	1005	1294

17-DEC-86 FERMILAR
ROUND 4 BD

1	2	3	4
1 MUTTA, H	1805	1805	1776
2 SAGALOVSKY, L	1758	1385	1498
3 KALINER, C	1788	1504	1498
4 SPIEGEL, L	1740	0	1450
5 GAINES, J	1770	0	1433
6 WALKER, R	1366	0	1433

21-JAN-87 BELL LABS DRAGONS
ROUND 6 BD

1	2	3	4
1 STINSON, M	1820	1820	1776
2 RUSLEY, D	1669	0	1776
3 WARD, C	1630	10	1498
4 PARIKH, P	0	0	1450
5 HAHNE, D	1312	31	1433
6 NUNOZ, A	1250	12	1433
7 KELLY, S	1333	0	1433

14-JAN-87 BELL LABS INDIANS
ROUND 5 BD

1	2	3	4
1 LUDWIG, T	2022	1762	1762
2 BLACKMON, E	1428	11	1632
3 SHACHTER, J	1497	12	1329
4 HICKS, C	0	0	1200
5 BEUNING, B	0	0	1056
6 WINDGRAD, Y	0	0	1056

27-JAN-87 J. I. CASE
ROUND 6 BD

1	2	3	4
1 SATTIERLEE, D	1601	13	1759
2 SANDOZ, E	1413	7	1714
3 KLINEFELTER, H	1399	0	1495
4 YANAS, W	1270	10	1285
5 NEID, C	0	0	1272
6 HALLMAN, W	1131	0	1272

10-DEC-86 KEMPER INSURANCE
ROUND 4 BD

1	2	3	4
1 SIMEI, M	1905	30	2157
2 VAN MEER, J	1793	0	2157
3 GARLAND, B	1584	19	1622
4 HUSHES, N	1583	15	1537
5 BLEDLOW, P	1395	23	1455
6 CUMMUTA, F	1253	23	1402

10-DEC-86 NORTH ALL-STARS
ROUND 1 BD

1	2	3	4	5
1 STEVANOVIC, M	2141	16	2030	16
2 WONG, P	2108	7	1922	12
3 CREWSE, L	2102	9	1851	9
4 BUERGER, E	1958	5	1831	8
5 BLOOM, B	1873	10	1806	10
6 STIMEK, M	1889	16	1778	16
7 SULLIVAN, J	1839	17	1783	17
8 GONCIAROFF, N	1714	9	1750	20
9 SKULSKI, I	1612	15	1725	15
10 WEITZ, R	1653	26	1606	26

14-JAN-87 FEL-PRO
ROUND 5 BD

1	2	3	4
1 MELLIZ, N	1627	23	1622
2 ILANGA, R	0	0	1518
3 FELDMAN, A	1429	1	1440
4 CRUZ, R	1236	31	1379
5 THOMPSON, R	1113	13	1275
6 BAKER, B	1000	0	1000

16-DEC-86 KEMPER INSURANCE
ROUND 4 BD

1	2	3	4
1 SIMEI, M	1905	30	2157
2 VAN MEER, J	1793	0	2157
3 GARLAND, B	1584	19	1622
4 HUSHES, N	1583	15	1537
5 BLEDLOW, P	1395	23	1455
6 CUMMUTA, F	1253	23	1402

17-JAN-87 EXCALIBURS
ROUND 5 BD

1	2	3	4	5
1 BUERGER, E	1953	16	1941	23
2 LEONG, S	1969	11	1793	11
3 SULLIVAN, J	1822	23	1603	35
4 KARLOVICS, S	1862	0	1598	8
5 OSTERLUND, R	1799	5	1418	5
6 ANDERSON, N	1734	5	1330	5
7 ANDERSON, T	1635	5	1572	5

10-DEC-86 FAR WEST ALL-STARS
ROUND 1 BD

1	2	3	4	5
1 LUDWIG, T	2030	16	2030	16
2 MAGLE, M	1922	12	1851	9
3 WEBSTER, D	1851	9	1831	8
4 VAN DER BIJ, J	1806	10	1806	10
5 KALINER, C	1778	16	1778	16
6 UNDERWOOD, W	1783	17	1783	17
7 JORGENSEN, B	1750	20	1750	20
8 GAINES, I	1725	15	1725	15
9 SPIEGEL, L	1606	26	1606	26
10 WALKER, P	1606	26	1606	26

1.5 RAYNES SCORE 1899 23 1
1.5 RAYNES SCORE 1553 -8 0
1.5 RAYNES SCORE 1459 -7 0
1.5 RAYNES SCORE 1375 -9 0
1.5 RAYNES SCORE 1005 -3 0

1.5 RAYNES SCORE 1805 0 0
1.5 RAYNES SCORE 1385 43 1
1.5 RAYNES SCORE 1504 -7 0
1.5 RAYNES SCORE 0 0 0
1.5 RAYNES SCORE 0 0 0
1.5 RAYNES SCORE 0 0 0
1.5 RAYNES SCORE 0 0 0

2 RAYNES SCORE 1762 -8 0
2 RAYNES SCORE 1632 11 1
2 RAYNES SCORE 1329 -12 0
2 RAYNES SCORE 1200 0 0
2 RAYNES SCORE 1056 0 0

2 RAYNES SCORE 2157 -36 0
2 RAYNES SCORE 1622 23 1
2 RAYNES SCORE 1518 0 0
2 RAYNES SCORE 1440 -1 0
2 RAYNES SCORE 1379 -31 0
2 RAYNES SCORE 1275 13 1
2 RAYNES SCORE 0 0 0

2.5 RAYNES SCORE 1941 23 1
2.5 RAYNES SCORE 1793 11 0
2.5 RAYNES SCORE 1603 35 1
2.5 RAYNES SCORE 1598 -8 0
2.5 RAYNES SCORE 1418 -5 0
2.5 RAYNES SCORE 1330 -2 0
2.5 RAYNES SCORE 1572 -5 0

2.5 RAYNES SCORE 1622 23 1
2.5 RAYNES SCORE 1518 0 0
2.5 RAYNES SCORE 1440 -1 0
2.5 RAYNES SCORE 1379 -31 0
2.5 RAYNES SCORE 1275 13 1
2.5 RAYNES SCORE 0 0 0

2.5 RAYNES SCORE 1941 23 1
2.5 RAYNES SCORE 1793 11 0
2.5 RAYNES SCORE 1603 35 1
2.5 RAYNES SCORE 1598 -8 0
2.5 RAYNES SCORE 1418 -5 0
2.5 RAYNES SCORE 1330 -2 0
2.5 RAYNES SCORE 1572 -5 0