

Chicago Industrial Chess League



Bulletin 4 Volume 30
January 1987

Notes from the President's Desk:

1. The 1986 CICL All-Star Finals were held between the Far West and the North Divisions. The match was "won" by the North Division, although the final score was 5-5. It was agreed beforehand that in the case of a tie score, board 10 would be dropped from the result in order to determine a winner. Results are published in this issue. The All-Star Matches played were both very close! An event to look forward to again next year...
2. The U.S. AMATEUR TEAM CHAMPIONSHIP-MIDWEST -- Feb. 14-16, 1987. This is your last chance to join a CICL team for the event! The cost for a four-man team is \$60.00, if entry is mailed by February 6. The CICL will give each team entered a \$20.00 subsidy, making the cost only \$10.00 per individual player. Call me (W: 576-4522) to let me know of your interest. See the detailed advertisement elsewhere in this issue of the bulletin. The tournament description can also be found in the Tournament Life section of the Chess Life magazine.
3. International Grandmaster Arthur Bisguier returns for another simultaneous exhibition! I have arranged with him to play at Amoco Laboratories on Monday March 9, at 7 PM. The cost to play (reduced from last year) is \$10 in advance (if mailed by Monday Feb. 23) or \$12 at the door. Invite your friends! This is a great opportunity for a rematch if you were not successful against him last year. Support this CICL event! Let's try to get one participant from each CICL team. Mail your advance reservation payment to Wes Underwood, Department of Chemistry, Wheaton College, Wheaton, IL 60187.

Bruce McNeil

The Illinois Chess Association invites you to the

U.S. AMATEUR TEAM CHAMPIONSHIP-MIDWEST

FEB. 14-16, 1987

at Chicago's luxurious HYATT REGENCY O'HARE
just off the Kennedy Expressway at River Road
only 1 block from the CTA River Road station

Excellent Room Rates: \$55 Single, Double

\$60 Triple, Quad

Free Parking!

Eligible: any team of 4 (+ 1 alternate) with an
average team rating under 2200.
The 1986 Annual Rating List printed in the
Jan. 1987 issue of CHESS LIFE will be used.
The 4 highest ratings are counted.

PRIZES: Top Team wins trophy, 4 chess clocks, and
qualifies for the national telephone playoffs.
Last year the Midwest champs won the national title.

Trophy + 4 clocks to: top 3 teams
top team rated under 2000
top team rated under 1800
top team rated under 1600
top team rated under 1400
or unrated

Trophy + 4 clocks to: top team made up of
High School players

Other Team Prizes: top College team Best Team Name
top Industrial team
2nd team made up of H.S. players

Individual Prizes: Chess Clocks to top player on each board
and to any 6-0 scores

Time Control: 50 moves in 2 hours

Register: 9-11 AM Feb. 14 No Smoking

6 Rounds: Feb 14 at 12 noon and 6 PM
Feb 15 at 11 AM and 5 PM
Feb 16 at 9 AM and 3:30 PM

Entry Fee: \$60 per team if mailed by Feb 6, \$75 later.

Contact: Harold Winston, 1567 Ridge # 601, Evanston IL 60201
(312)-475-7022

Start planning now to put together a team for this great event!

NORTH DIVISION 01/04/86

| TEAM NAME | W | L | D | GAME POINTS | MATCH POINTS | PCT |
|------------------|---|---|---|-------------|--------------|-------|
| EXEMPLARS | 3 | 0 | 1 | 14.0 | 3.5 | 0.875 |
| AT&T SKOKIE | 2 | 0 | 2 | 17.0 | 3.0 | 0.750 |
| EXCALIBURS | 3 | 1 | 0 | 14.5 | 3.0 | 0.750 |
| MOTOROLA | 2 | 1 | 1 | 14.5 | 2.5 | 0.625 |
| KEMPER INSURANCE | 2 | 1 | 0 | 9.5 | 2.0 | 0.667 |
| ZENITH-GLENVIEW | 0 | 3 | 1 | 7.0 | 0.5 | 0.125 |
| UOP PROCESS DIV. | 0 | 2 | 1 | 4.5 | 0.5 | 0.167 |
| FEL-PRO | 0 | 4 | 0 | 6.0 | 0.0 | 0.000 |

EAST DIVISION 01/04/86

| TEAM NAME | W | L | D | GAME POINTS | MATCH POINTS | PCT |
|------------------------|---|---|---|-------------|--------------|-------|
| ALUMNI CENTRAL | 3 | 0 | 0 | 15.0 | 3.0 | 1.000 |
| SEARS | 2 | 0 | 1 | 11.5 | 2.5 | 0.833 |
| AMOCO CORP. | 1 | 2 | 0 | 7.5 | 1.0 | 0.333 |
| FIRST NAT'L BANK | 1 | 1 | 0 | 5.0 | 1.0 | 0.500 |
| CONTINENTAL BANK | 0 | 2 | 1 | 6.0 | 0.5 | 0.167 |
| CHI BD OF OPTIONS EXCH | 0 | 2 | 0 | 3.0 | 0.0 | 0.000 |

NEAR WEST DIVISION 01/04/86

| TEAM NAME | W | L | D | GAME POINTS | MATCH POINTS | PCT |
|-------------------|---|---|---|-------------|--------------|-------|
| AT&T CHARGERS | 4 | 0 | 0 | 18.5 | 4.0 | 1.000 |
| ARGONNE KNIGHTS | 4 | 0 | 0 | 18.5 | 4.0 | 1.000 |
| ROCKWELL INT'L | 3 | 2 | 0 | 15.0 | 3.0 | 0.600 |
| BELL LABS DRAGONS | 3 | 1 | 0 | 12.5 | 3.0 | 0.750 |
| EXECUTIONERS | 1 | 3 | 0 | 9.5 | 1.0 | 0.250 |
| A & B RADIO | 0 | 5 | 0 | 10.5 | 0.0 | 0.000 |
| J. I. CASE | 0 | 4 | 0 | 5.5 | 0.0 | 0.000 |

FAR WEST DIVISION 01/04/86

| TEAM NAME | W | L | D | GAME POINTS | MATCH POINTS | PCT |
|---------------------|---|---|---|-------------|--------------|-------|
| ARGONNE ROCKS | 3 | 1 | 0 | 14.0 | 3.0 | 0.750 |
| FERMILAB | 3 | 0 | 0 | 12.0 | 3.0 | 1.000 |
| AMOCO RESEARCH LABS | 1 | 2 | 0 | 8.0 | 1.0 | 0.333 |
| BELL LABS INDIANS | 1 | 1 | 0 | 5.5 | 1.0 | 0.500 |
| WHEATON COLLEGE | 0 | 3 | 1 | 9.5 | 0.5 | 0.125 |
| AT&T TYROS | 0 | 1 | 1 | 5.0 | 0.5 | 0.250 |

NORTH DIVISION TOP TEN

| | | |
|---------------|-------|-------|
| STEVANOVIC, M | UOP | 2141 |
| WONG, P | EXMPL | 2108 |
| CREWSE, L | EXMPL | 2102 |
| MUNEIL, B | MTRLA | 2024 |
| TEGEL, F | ATTSK | 1994C |
| LEONG, G | EXCAL | 1969 |
| BUERGER, E | EXCAL | 1958C |
| SIWEK, M | KEMPR | 1889 |
| JACOBS, N | ATTSK | 1888C |
| KRAKAU, H | EXMPL | 1883 |

EAST DIVISION TOP TEN

| | | |
|-----------------|-------|-------|
| CZERNIECKI, A | ALUMN | 2244C |
| REYES, R | SEARS | 2215C |
| HUTTAR, C | FNBK | 2045 |
| WEIHMILLER, W | AMCRP | 2024 |
| LATIMER, E | SEARS | 1959C |
| WIRTSCHAFTER, D | ALUMN | 1937 |
| COX, M | ALUMN | 1935 |
| SALKAUSKAS, A | FNBK | 1882 |
| SILVERBERG, A | FNBK | 1872 |
| GOLLA, R | SEARS | 1855C |

NEAR WEST DIVISION TOP TEN

| | | |
|-------------|-------|-------|
| BENEDEK, R | KNGHT | 2059C |
| WARREN, J | CHRGR | 1987D |
| MUSGRAVE, C | EXECU | 1897 |
| YOUNG, C | KNGHT | 1867C |
| STINSON, M | DRGNS | 1820 |
| SAMELSON, C | ROCKW | 1776 |
| SEDLOCK, E | EXECU | 1759 |
| SWANSON, V | EXECU | 1714 |
| KUMRO, D | CHRGR | 1709D |
| DECMAN, S | KNGHT | 1677C |

FAR WEST DIVISION TOP TEN

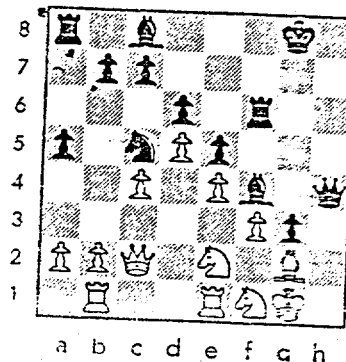
| | | |
|----------------|-------|-------|
| STREETS, D | ROOKS | 2081C |
| LUDWIG, T | INDNS | 2038 |
| NAGLE, M | AMOCO | 1899 |
| BERRY, G | ROOKS | 1881D |
| VAN DER BIJ, J | FERMI | 1831* |
| STOLTZ, B | TYROS | 1827 |
| KALIHER, C | FERMI | 1806 |
| JORGENSEN, B | ROOKS | 1783* |
| UNDERWOOD, W | WHEAT | 1778 |
| GAINES, I | FERMI | 1750C |

MOST IMPROVED PLAYERS

| | | |
|--------------|-------|----|
| LITVINAS, A | ALUMN | 63 |
| SAMELSON, C | ROCKW | 62 |
| EDWARDS, S | EXMPL | 61 |
| BLACKMON, E | INDNS | 61 |
| FRANEK, M | ALUMN | 57 |
| JORGENSEN, B | ROOKS | 51 |
| DIXON, R | CBOPE | 49 |
| WAGNER, RA | MTRLA | 47 |
| KARLOVICS, S | EXCAL | 44 |
| GARESCH, F | EXECU | 40 |

Problem #1 (solutions elsewhere in this issue)

This position is from a correspondence game -- R. Wiczynski vs. W. Underwood, USCF 86VB7, 1986. It is clear that black has the upper hand, but efficiency is highly desirable in a postal game! What is the best move for white?



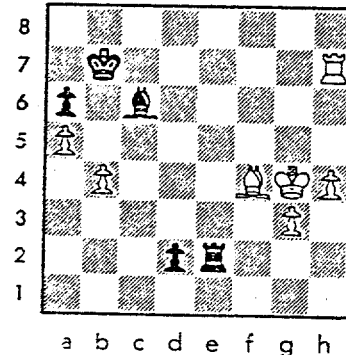
In the first round of the 1986 CIGL All-Star Match, the North Division narrowly beat the East Division 5½ - 4½. Meanwhile, the Near West Division forfeited to the Far West Division. In the finals, the North Division beat the Far West Division on tie-break, the score being 5 - 5. The finals will be rated for the next bulletin issue.

| 12-NOV-86 EAST ALL-STARS | | | | 4.5 NORTH ALL-STARS | | | | 5.5 | | | |
|--------------------------|----|---------------|---------|---------------------|---------------|---------|------------|---------------|--|--|--|
| ROUND 1 BD | | | | RATINGS SCORE | | | | RATINGS SCORE | | | |
| (ALUMN) | 1 | CZERNIECKI, A | 2223 18 | 1 | STEVANOVIC, M | 2146-18 | 0 (UOP) | | | | |
| (ALUMN) | 2 | COX, M | 1924 11 | .5 | WONG, P | 2092-11 | .5 (EXMPL) | | | | |
| (FNBNK) | 3 | SALKAUSKAS, A | 1893-11 | 0 | CREWSE, L | 2081 11 | 1 (EXMPL) | | | | |
| (CONBK) | 4 | SOMBONG, M | 1812 -8 | 0 | MCNEIL, B | 2071 8 | 1 (MTRLA) | | | | |
| (ALUMN) | 5 | FRANEK, M | 1730 37 | 1 | BUERGER, E | 2003-25 | 0 (EXCAL) | | | | |
| (CONBK) | 6 | KOGAN, G | 1689 13 | .5 | BLOOM, B | 1913-13 | .5 (MTRLA) | | | | |
| (ALUMN) | 7 | LITVINAS, A | 1620 36 | 1 | SULLIVAN, J | 1858-24 | 0 (EXCAL) | | | | |
| (CONBK) | 8 | PARAGAN, E | 1528-11 | 0 | NEUMARK, J | 1734 7 | 1 (MTRLA) | | | | |
| (CONBK) | 9 | ZOELLNER, J | 1126-20 | 0 | SKULSKI, I | 1624 2 | 1 (ZENTH) | | | | |
| (OBOPE) | 10 | MITCHELL, T | 0 0 | .5 | WEITZ, R | 1616 0 | .5 (FLPRO) | | | | |
| (CONBK) | 11 | SIEGEL, R | 1463 8 | .5 | BURIAN, D | 1580 -8 | .5 (EXMPL) | | | | |

| 10-DEC-86 NORTH ALL-STARS | | | | 5 FAR WEST ALL-STARS | | | | 5 | | | |
|---------------------------|----|---------------|----|----------------------|------------|--|--|---------------|--|--|--|
| ROUND 2 BD | | | | RATINGS SCORE | | | | RATINGS SCORE | | | |
| (UOP) | 1 | STEVANOVIC, M | 1 | LUDWIG, T | 0 (INDNS) | | | | | | |
| (EXMPL) | 2 | WONG, P | .5 | NAGLE, M | .5 (AMOCO) | | | | | | |
| (EXMPL) | 3 | CREWSE, L | 1 | WEBSTER, D | 0 (INDNS) | | | | | | |
| (EXCAL) | 4 | BUERGER, E | .5 | VAN DER BIJ, J | .5 (FERMI) | | | | | | |
| (MTRLA) | 5 | BLOOM, B | 1 | KALIHER, C | 0 (FERMI) | | | | | | |
| (KEMPR) | 6 | SIWEK, M | 1 | UNDERWOOD, W | 0 (WHEAT) | | | | | | |
| (EXCAL) | 7 | SULLIVAN, J | 0 | JORGENSEN, B | 1 (ROOKS) | | | | | | |
| (MTRLA) | 8 | GONCHAROFF, N | 0 | GAINES, I | 1 (FERMI) | | | | | | |
| (ZENTH) | 9 | SKULSKI, I | 0 | SPIEGEL, L | 1 (FERMI) | | | | | | |
| (FLPRO) | 10 | WEITZ, R | 0 | WALKER, P | 1 (WHEAT) | | | | | | |

Problem #2

This position is from W. Underwood vs. D. Anderson, CIGL 1986. Black to move. Does black have a win in this position, or is it a draw? What's the best move?





186 ROUTE 9W • NEW WINDSOR, NY 12550 • (914) 562-8350

Grandmaster Arthur Bisguier

International Grandmaster Arthur Bisguier has had a long and distinguished chess career dating back to the forties when he was twice National Junior Champion and several times Manhattan Chess Club Champion. Since that time the roster of players he has beaten or drawn reads like a Who's Who of Chess and includes virtually every leading grandmaster in the world.



Five-time U.S. Open Champion

In 1950 Bisguier won the U.S. Open for the first time and also won or tied for first in 1956, 57, 59, and 69, finishing only half a point from the top in many other years. He scored his first international victory at Southsea, England, in 1950. Even while in military service, he squeezed in some chess, scoring first in Vienna in 1952 and playing for the United States team in the Helsinki Olympiad of 1952.

Returning home from the Army, he won the Hollywood Pan American Championship in 1954. Later that year, he won the Challengers' Tournament in Philadelphia and the U.S. Championship. He has played in most of the succeeding U.S. Championships, and in the 1962-63 event, he led the field until the final round when he characteristically succumbed to Bobby Fischer and had to content himself with second place.

Bisguier was awarded the International Master title in 1952 and the International Grandmaster title, the highest of all, in 1957, when this title was rare indeed. He has participated in two Interzonals, five Olympiads, innumerable international tournaments, two team matches against the Soviet Union, and one against Yugoslavia. He has also been very successful in domestic tournaments, at one time or another winning outright or tying for first in every major Swiss-system event, including the prestigious Lone Pine Tournament, the National Open, and the World Open. In 1979, he won the first American Grand Prix, having accumulated the best results in the year-long series of major open tournaments.

Mr. Bisguier is Grandmaster-on-Staff for the U.S. Chess Federation and Technical Advisor to the monthly magazine *Chess Life*. In addition, he continues as a popular and active chess lecturer and simultaneous exhibitor, playing as many as 100 opponents at a time. He has also been a frequent contributor to chess magazines, encyclopedias, and books, as well as having co-authored, with Andrew Soltis, *American Chess Masters From Morphy to Fischer*. He has appeared often on television and hosted his own show during the Fischer-Spassky World Championship Match.

His other activities have included work in accounting, computer programming, technical writing, and magazine editing. He was married in 1959, has two daughters, and resides with his family in the Catskill Mountains at Rock Hill, New York.

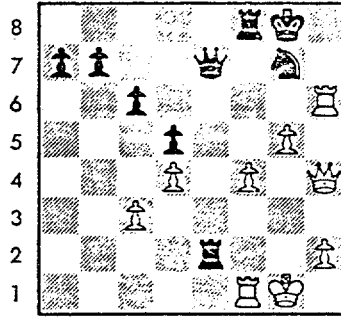
This game represents a rating point upset of nearly 600 points!

White: L. Sagalously (FERMI - 1952)

Black: E. Blackmon (INDNS - 1385)

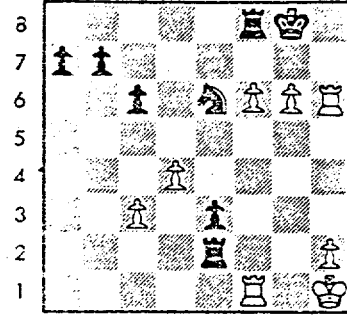
- 1. e4 e6
- 2. d4 d5
- 3. Nc3 Bb4
- 4. e5 Ne7
- 5. a3 Bxc3
- 6. bxc3 Nd7? (1)
- 7. Qg4 Ng6? (2)
- 8. Bg5! f6
- 9. Qxe6+ Ne7
- 10. exf6 Nxf6
- 11. Qe5 O-O
- 12. Bxf6 Rxf6
- 13. Be2 c6
- 14. Nf3 Qf8
- 15. O-O? Re6!
- 16. Qh5 g6 (3)
- 17. Qh4 Rxe2
- 18. Rge1 Nf5
- 19. Qg5 Rxc2 (4)
- 20. Ne5 Qe7
- 21. Qf4 Qd6
- 22. g4 Ng7
- 23. Qf7+ Kh8
- 24. Qf3 Qxg3 (5)
- 25. Qf6 Be6

- 26. Nxc6+ hxc6
- 27. Rxe6 Rf8
- 28. Qh4+ Kg8
- 29. Rxc6 Re2
- 30. Rh6 Qe7 (6)
- 31. g5 (7) Re4!
- 32. f4 Re2



a b c d e f g h

- 33. f5 (8) Qe3+
- 34. Kh1 Qe4+
- 35. Qxe4 dxe4 (9)
- 36. f6 Ne6
- 37. g6 e3!



a b c d e f g h

- 38. f7+? (10) Kg7
- 39. Rh4 Rd2
- 40. Rg1 e2
- 41. Rh7+ Kf6
- 42. g7 Nxc6
- 43. Rxc6 Rd1!
- 44. Rg6+ Kxf7
- 45. Rg7+ Ke8
- 46. Resigns

[0 - 1]

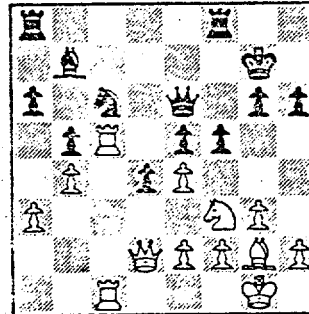
Notes:

- (1) Black should play ...c5 followed by ...Nc6, to put pressure on d4.
- (2) Perhaps Black must play 7. ... c5 and allow 8 Qxc6 Rg8 9. Qxc7, although without a Knight on c6, there isn't enough counterplay. 7. ... O-O looks dangerous, but is possibly best.
- (3) Not 16. ... Rxe2 17. Ng5!
- (4) Trading Rooks gives White tremendous play and the e-file, but this move puts the Rook out of play and in danger of being trapped.
- (5) Now even the Queen is dangerously out of play.
- (6) Black's resources are just enough! Although this position looks very strong for White, no attack seems to work without too much trade of material.
- (7) If 31. Rh8+ Kf7, either the White Queen or White Rook will be traded.
- (8) Allows a Queen trade, but how else does White proceed?
- (9) A very important passed pawn!
- (10) Gives the Black King a safe haven. Instead, 38. g7! Nxc6! 39. Rg1 Rf7 40. Rxc6 Rf2 41. fxc6 [41. Rxc6+ Rxc6 42. Rxc6+ (42. fxc6 e2! -+) Kf8 43. Kg1 (43. Re7 e2 followed by 44. ... Rf1+ wins for Black) Rxf6 44. Rxb7 e2 45. Rb1 Rf3 is unclear] Rf1 = .

(Submission by Eric Blackmon. Notes by Wes Underwood.)

The following position occurred after: 1.N-KB3 P-Q4 2.P-KN3 P-KN3
 3.B-N2 B-N2 4.O-O N-KB3 5.P-B4 P-B3 6.PxP PxP 7.P-Q3 O-O 8.N-B3 N-B3
 9.B-B4 P-QR3 10.Q-Q2 P-QN4 11.B-R6 B-N2 12.BxB KxB 13.P-QR3 Q-Q3
 14.QR-B1 P-Q5 15.N-K4 NxN 16.PxN P-K4 17. P-QN4 P-R3 18. R-B5 Q-K3
 19.KR-B1 P-KB4 (see diagram)

The position is from a Board 1 game in an East division match. There are 3 pieces on the diagonal h1-a8 between the two bishops. And the interesting thing about this position is that even with these 3 units between the two bishops, White appears to have the ability to profit from it and come out with a material advantage.



The game continued: 20.PxP QxP 21.RxN BxR 22.RxB KR-B1 23.RxR? RxR
 24.P-KR4 R-B6 25.Q-N2 Q-B7!! 26.QxQ RxQ 27.NxP RxP 28.P-B4 R-R7
 29.B-K4 RxP 30.BxB RxPch 31.K-B2 RxB 32.NxR KxN 33.K-B5 K-B4
 34. White Resigns [0 - 1].

From the diagrammed position, instead of 20.PxP, what appears to give White a winning game is the move 20.NxKP! The only logical reply seems to me 20...NxN. And after 21.PxP (Not 21.QxP QR-K1 22.PxP because of 22...Q-B3!! which threatens to win White's Queen with 23...N-B6ch and wins) Black doesn't seem to have anything better than 21...QxP. But then after 22.QxP BxB 23.RxN Q-B3 (forced! or otherwise Black is mated in two after 23...Q-R6??? 24.R-K7ch K-N1 25.Q-N7 mate) White recovers the Bishop with 24.KxB and comes out two pawns ahead. It appears to me that the only thing Black could do after 20.NxKP NxN 21.PxP is to try to find a way to minimize his loss to only one pawn instead of two (such as 20.NxP NxN 21.PxP Q-Q3).

My analysis may not hold water. But it seems to me that it does offer pretty interesting ideas.

(Submission and analysis by Ruben R. Reyes)

Note from the Editor:

Thank you for the submissions! Keep them coming...
 Now that I have obtained materials for producing chess positions by diagram, particular positions and problems can be submitted without entire game scores. Materials with or without analysis are welcome.

"WHEN EAST MET NORTH"

Back on November 12, 1986 one of two scheduled all-star matches took place between the east division and the north division. The match site was Continental Bank. Despite the downtown location, a number of strong east division players were unable to participate. Therefore, even though ideally an all-start team should consist of a minimum of one representative from each team in the division, the first ten boards from the east had no players from Sears or Standard Oil. Vacant boards were filled from would-be extra players and spectators, resulting in a line-up that consisted of four alumni players, four players from Continental Bank, and one player each from First National Bank and the Chicago Board of Options Exchange.

The east division was outrated on every board except first, where Tony Czerniecki defeated Miomir Stevanovic. Not expecting to play, I, with my humble 1714 rating, was drafted to play board five. All of the points and half-points scored by eastern division players, with the exception of board one, were upsets. Here is the game that I think represented the biggest upset of the match.

11/12/86 Board Five

E. Buetger (North/Excaliburs) M. Fronck (East/Alumni Central)

- | | | |
|----|-----|-----|
| 1. | d4 | Nf6 |
| 2. | c4 | g6 |
| 3. | nc3 | kg7 |
| 4. | e4 | d6 |
| 5. | f3 | |

The Saemisch Attack, very popular lately against the King's Indian defense.

- | | |
|----|-----|
| 5. | 0-0 |
| 6. | Be3 |
| | c6 |

In my somewhat sparse reference library, I cannot find any games or analysis where Black follows up castling with the ...c6, ...a6, ...b5 system. So, I guess according to my limited resources, we are out of the 'book', even though the next two moves for both sides are characteristic of the Saemisch.

- | | | |
|----|-----|-----|
| 7. | Qx2 | Ng6 |
| 8. | Ng2 | b5 |
| 9. | Kf1 | Qc7 |

I did not fear Kc1 from White because I was of the opinion that after White's bold ninth move together with the fact that the King's bishop is still on f1, that White would castle queenside. About castling queenside, I soon learned otherwise.

- | | | |
|-----|-----|------|
| 10. | Ng3 | Nbd7 |
| 11. | h4 | e5 |
| 12. | d5 | bc7 |
| 13. | dc | Nb6 |

I spent a lot of time on this move, debating whether or not to recapture right away on c6. The idea behind my 13th move was to try to get in ...d6 and ...d5 and liquidate my backward d pawn. Of course, White gets into trouble after 14. Bxb6 Qxb6 15. Qxd6 Qe3ch However ---

- | | | |
|-----|-----|-------|
| 14. | Mf5 | Nbxd5 |
| 15. | ed | a5? |

A waste of time. The c pawn is dead anyway. Necessary is 15 ...e5 to try to either open up the e file (if 16. Nxe4) or activate the Queen's bishop (if 16. fe). White is winning here but Black could take some shots at White's uncastled King if he can get in ...e5.

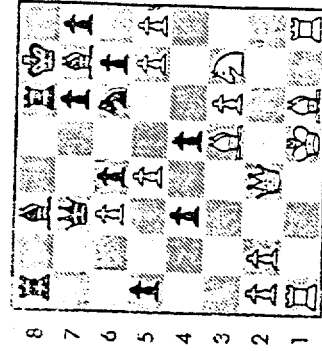
- | | |
|-----|-----|
| 16. | h5! |
|-----|-----|

On with the Kingside attack. It would have been more prudent to take the free c pawn, since it has a vital role in Black's upcoming desperate attempt for some counterplay.

- | | |
|-----|----|
| 16. | e5 |
|-----|----|

Black uses his second chance to play this move. White can still pick up the c pawn with impunity.

- | | |
|-----|----|
| 17. | g5 |
|-----|----|



a b c d e f g h

c31

I awarded my own move here with an exclamation mark because I think Black is no longer lost at this point. If 18 cb then 18 ... Nxd5.

- 18. Qh2
- 19. Rb1

cb

19. Nf1 is probably best. For example 19. Nf1 Nxd5 20. Nc3 Nc3ch 21. Nd2 Rxc3ch 22. Kxb f8 23. Rc4 Rc6.

- 20. Nc3
- 21. Kf2
- 22. Nxe4
- 23. Nxb7?

Oh well. It happens to the best of us.

- 23. Nc3
- 24. Nc2
- 25. Nf5

Caution in Nf11 required for Black.

- 26. Nf6ch
- 27. Bx1b
- 28. Rxb

And White resigned without trying 29. Bc6ch to see if Black would play 29. ... Kf8? 30. R/1h1 b1 = Q?? 31. Rch7 mate.

All's well that ends well, I guess. Unfortunately, it did not help my team win or draw the match.

Final score: North 5.5 East 4.5.

| NAME | TEAM | W | L | D | RATING | NAME | TEAM | W | L | D | RATING |
|---------------|--------|---|---|---|--------|---------------|--------|---|---|---|--------|
| AFSHAKI, A | DRINS | 0 | 1 | 0 | 0000? | DECHAN, S | KNIGHT | 2 | 1 | 0 | 1677C |
| AGRAMA, I | ZENITH | 0 | 1 | 0 | 1581 | DEWITT, G | RUCKW | 2 | 0 | 0 | 1433 |
| ANDREWS, N | EXCAL | 2 | 1 | 1 | 1734C | DIXON, R | CBROPE | 2 | 0 | 0 | 1572 |
| ANDRESEN, I | EXCAL | 1 | 1 | 0 | 1835C | DUBK, K | CHRGK | 3 | 1 | 0 | 1567D |
| ANDLIN, B | SEAKS | 2 | 1 | 0 | 1530* | DOUGHTY, J | WHEAT | 0 | 2 | 0 | 0000? |
| ANTHONY, M | FENIK | 1 | 1 | 0 | 0000? | DURKES, D | SEAKS | 1 | 1 | 0 | 1322* |
| ASHKUDK, K | FLPRU | 1 | 1 | 0 | 853* | DURKEE, D | ATISK | 4 | 0 | 0 | 1725 |
| ATKINSON, J | AMPLN | 0 | 1 | 2 | 1540* | EASLEY, K | INDNS | 1 | 0 | 0 | 1805* |
| BARKER, B | WHEAT | 0 | 5 | 0 | 1000 | EDWARDS, S | EXPLF | 3 | 1 | 0 | 1274 |
| BARTON, J | WHEAT | 0 | 1 | 0 | 1405# | EUSFACE, D | DRINS | 0 | 1 | 0 | 0000? |
| BARKISH, A | ZENITH | 1 | 0 | 1 | 1762 | FARKENHOLZ, S | MTRLA | 3 | 0 | 0 | 0000? |
| BARKOC, D | INDHT | 4 | 0 | 0 | 1650 | FARKUS, J | CHRGK | 1 | 0 | 0 | 1585C |
| BELLE, S | INDNS | 1 | 1 | 0 | 0000? | FARKELL, D | WHEAT | 1 | 0 | 0 | 1232* |
| BENLIDEL, K | KNIGHT | 2 | 0 | 0 | 2052C | FELDMAN, A | FLPRU | 0 | 2 | 0 | 1429 |
| BENNY, G | KOOKS | 2 | 0 | 2 | 1881D | FISCHLER, M | FENIK | 1 | 0 | 0 | 1375 |
| BEURLING, B | INDNS | 0 | 3 | 0 | 0000? | FISBARTY, D | EXPLF | 1 | 1 | 0 | 1594* |
| BLACKMON, E | INDNS | 3 | 0 | 0 | 1385* | FRANEK, M | ALUMN | 4 | 0 | 0 | 1771 |
| BLAZIE, J | TYRUS | 0 | 1 | 0 | 1538 | GAINES, I | FENIK | 2 | 1 | 0 | 1760C |
| BLEDIUM, P | KEMPR | 2 | 1 | 0 | 1395 | GAFASIN, C | CORBK | 0 | 2 | 0 | 0000? |
| BLOUM, B | MTRLA | 1 | 3 | 1 | 1873 | GAKESCHE, P | EXCAL | 2 | 1 | 0 | 1495* |
| BLOUMFELD, K | ATISK | 0 | 1 | 0 | 0000? | GARLAND, G | KEMPR | 0 | 2 | 1 | 1584 |
| BLOUMFELD, K | AMPLN | 0 | 2 | 0 | 1459 | GRANES, L | ATISK | 1 | 0 | 0 | 1405 |
| BODITH, D | DRINS | 1 | 3 | 0 | 1137# | GRULAP, S | ZENITH | 0 | 1 | 0 | 0000? |
| BOWMAN, M | UOF | 0 | 3 | 0 | 1537 | GULLA, K | AMPLN | 0 | 2 | 0 | 0000? |
| BRODUS, J | EXCAL | 2 | 0 | 0 | 1572C | GULLA, M | SEAKS | 3 | 0 | 0 | 1834C |
| BROZOVICH, J | TYRUS | 1 | 0 | 0 | 1714C | GUNCHAKOFF, N | MTRLA | 2 | 0 | 1 | 1714D |
| BULHRANAN, K | FENIK | 0 | 1 | 0 | 1493 | GUY, R | CORBK | 0 | 1 | 0 | 0000? |
| BURKBER, E | EXCAL | 0 | 3 | 2 | 1958C | GUYPETTE, R | CBROPE | 0 | 1 | 0 | 0000? |
| BURKHA, K | KNIGHT | 1 | 0 | 0 | 1378C | GRAFF, K | UOF | 1 | 2 | 0 | 1252* |
| BURKIAN, D | EXPLF | 2 | 1 | 2 | 1564 | GREEN, D | KOOKS | 2 | 1 | 0 | 1612C |
| BURS, K | ALUMN | 2 | 0 | 0 | 1565C | GRYPARIS, J | MTRLA | 1 | 2 | 0 | 1294* |
| CAMPBELL, C | AMPLN | 0 | 3 | 0 | 1197* | HANNE, D | DRINS | 2 | 2 | 0 | 1312* |
| CARPENTER, P | ATISK | 2 | 2 | 0 | 1432 | HALL, M | WHEAT | 1 | 1 | 0 | 1656* |
| CARTER, R | EXCAL | 1 | 1 | 0 | 0000? | HALLMAN, W | JCASE | 2 | 0 | 0 | 1131* |
| CHAM, H | FENIK | 1 | 2 | 0 | 1609 | HANLEY, M | JCASE | 0 | 1 | 0 | 0000? |
| CHANKOVSKY, K | AMPLN | 1 | 0 | 0 | 0000? | HARRINGER, R | TYRUS | 0 | 1 | 0 | 1606C |
| CHANKURDIKUM | SEAKS | 0 | 1 | 2 | 1403# | HARTISUN, I | WHEAT | 3 | 2 | 0 | 1200* |
| CHILKESAN, S | UOF | 1 | 2 | 0 | 1422 | HEALY, S | EXCAL | 2 | 1 | 1 | 1272* |
| CHRISTIAN, R | ATISK | 3 | 0 | 0 | 1772 | HEILKER, C | RUCKW | 0 | 1 | 0 | 0000? |
| CLARA, F | SEAKS | 1 | 0 | 0 | 1403 | HESSE, B | FLPRU | 1 | 1 | 0 | 1572* |
| CULLINS, F | MTRLA | 0 | 1 | 0 | 0000? | HODGES, H | FENIK | 1 | 1 | 0 | 1515* |
| CUNWAY, F | ZENITH | 0 | 1 | 0 | 1332 | HOLM, B | AMPLN | 2 | 2 | 0 | 1563 |
| CUNY, M | ALUMN | 1 | 1 | 1 | 1935 | HUMPH, R | KEMPR | 2 | 1 | 0 | 1583 |
| DAWSON, L | EXPLF | 3 | 0 | 0 | 2102 | HUGHES, N | RADJO | 2 | 2 | 0 | 0000? |
| DAWSON, L | FLPRU | 0 | 2 | 0 | 1236* | HUITAK, C | FENIK | 0 | 1 | 0 | 2045 |
| DAWSON, L | KEMPR | 1 | 1 | 0 | 1253 | ILANGA, R | FLPRU | 1 | 0 | 0 | 0000? |
| DEKNECK, A | ALUMN | 3 | 0 | 0 | 2244C | JACQUES, N | ATISK | 4 | 0 | 0 | 1886C |
| DAVIDOFF, B | KNIGHT | 1 | 1 | 0 | 0000? | JOHNSUN, M | MTRLA | 0 | 2 | 0 | 1024# |
| DARWIN, J | KNIGHT | 1 | 0 | 0 | 0000? | JONES, B | RUCKW | 2 | 0 | 0 | 0000? |
| DAWSON, J | RUCKW | 1 | 0 | 0 | 1105* | JONES, J | CBROPE | 0 | 1 | 0 | 0000? |

? - UNRATED

- 5 TO 10 Y NATED GAMES

* - 10 TO 24 NATED GAMES

C - CENTURY CLUB MEMBER

D - DOUBLE CENTURION

| NAME | TEAM | W | L | D | RATING | NAME | TEAM | W | L | D | RATING | NAME | TEAM | W | L | D | RATING | |
|----------------|--------|---|---|---|--------|----------------|-------|---|---|---|--------|-----------------|--------|---|---|---|--------|--|
| JURGENSEN, D | ROCKS | 4 | 0 | 0 | 1783* | U' DELL, DW | RADIO | 1 | 3 | 1 | 1427 | STINELLIS, D | ROCKS | 2 | 0 | 1 | 2081C | |
| JUSTIFISSON, D | WHEAT | 2 | 0 | 0 | 0000? | UGASAWANA, K | MIRLA | 0 | 1 | 0 | 1564D | STURILBERG, D | UJF | 0 | 3 | 0 | 1492 | |
| FALHNER, C | FERRI | 1 | 1 | 1 | 1806 | USTENLUND, K | EXCAL | 2 | 1 | 0 | 1365* | SHAKTH, P | EXCAL | 2 | 1 | 0 | 1365* | |
| KANAS, W | JCASE | 1 | 2 | 0 | 1270 | PARAME, N | AMOLU | 0 | 1 | 0 | 1570* | SHULLIVAN, J | EXCAL | 2 | 2 | 0 | 1570* | |
| FARLUMTUSA, S | EXCAL | 3 | 0 | 0 | 1862C | PAYAUAN, E | CUNBK | 2 | 2 | 0 | 0000? | SWANSON, V | EXCAL | 2 | 1 | 0 | 1839C | |
| FELL, C | WHEAT | 1 | 0 | 0 | 0000? | PARKER, P | DRGNS | 0 | 1 | 0 | 0000? | SWIDENSKI, M | EXCAL | 1 | 3 | 0 | 1714 | |
| FELLDIG, K | KNIGHT | 2 | 1 | 1 | 1647C | PARKER, M | ROCKW | 0 | 2 | 0 | 0000? | TASKER, I | EXCAL | 1 | 0 | 1 | 1360C | |
| KELLY, S | DRGNS | 1 | 1 | 0 | 1333* | PODGURNIK, P | ROCKW | 0 | 1 | 0 | 0000? | WELGAND, J | EXCAL | 1 | 0 | 1 | 0000? | |
| FINSHELLA, G | KNIGHT | 1 | 1 | 0 | 1450C | POKATILOFF, W | FLPRU | 0 | 1 | 0 | 1326 | WELTPILLER, W | AMOLU | 2 | 0 | 1 | 2024 | |
| KLINGFELDER, H | JCASE | 1 | 2 | 0 | 1399* | PUPYS, W | FLPRU | 0 | 1 | 0 | 1509 | WELTSNER, I | AMOLU | 0 | 2 | 2 | 1100 | |
| KUBAN, B | CUNBK | 0 | 2 | 2 | 1606# | PURKISH, K | ROCKW | 0 | 1 | 1 | 0000? | WELTZ, K | FLPRU | 0 | 1 | 3 | 1994C | |
| KUMRUDSKY, K | WHEAT | 2 | 0 | 0 | 0000? | RADAVIC IUS, E | ROCKS | 0 | 0 | 1 | 0000? | WENTLING, C | FLPRU | 0 | 1 | 1 | 1373 | |
| KRAVAR, H | EXCAL | 1 | 0 | 0 | 1883 | RAFALCZ, J | CHRGK | 3 | 0 | 1 | 1585C | WIENECK, I | FLPRU | 0 | 2 | 0 | 1515 | |
| KRAUSE, J | FNRNK | 1 | 0 | 0 | 0000? | RAFMANIAN, S | ROCKW | 3 | 2 | 0 | 1498* | WILSON, A | FLPRU | 0 | 1 | 0 | 1113* | |
| KROEGER, K | WHEAT | 0 | 3 | 0 | 0000? | REDY, E | ROCKW | 0 | 2 | 0 | 0000? | WIRTSCHAFTER, D | ALUPN | 1 | 0 | 0 | 0000? | |
| KULINEK, M | FNRNK | 0 | 0 | 0 | 0000? | REID, C | ROCKS | 0 | 2 | 0 | 1038* | WJNS, P | EXCAL | 3 | 0 | 1 | 1937 | |
| KUMILUCH, M | CUOPE | 0 | 2 | 0 | 0000? | REYES, R | JCASE | 0 | 2 | 0 | 2215C | WISRELL, J | AMOLU | 0 | 1 | 0 | 2108 | |
| KUPANI, D | CHRGK | 3 | 0 | 1 | 1709D | RIBOT, A | SEARS | 0 | 0 | 1 | 0000? | YOUNG, C | KNIGHT | 1 | 0 | 1 | 1654 | |
| LARIHAM, N | AMOLU | 1 | 1 | 0 | 0000? | RINGENBERG, I | CUOPE | 0 | 1 | 0 | 0000? | ZARUMB, S | ROCKS | 1 | 0 | 0 | 1476* | |
| LANDRY, H | CUOPE | 0 | 1 | 0 | 0000? | ROSTING, G | AMOLU | 0 | 1 | 0 | 0000? | ZUELLNER, J | CUNBK | 0 | 3 | 0 | 1116* | |
| LANNIYE, D | SEARS | 2 | 0 | 0 | 1363* | RUSLEY, D | CUOPE | 1 | 1 | 0 | 1405# | | | | | | | |
| LASKY, J | RADIO | 2 | 2 | 0 | 1221* | RZESZUTKO, K | DRGNS | 3 | 0 | 0 | 1649 | | | | | | | |
| LASKY, N | RADIO | 0 | 3 | 1 | 1429 | SABADUS, P | ALUPN | 2 | 0 | 0 | 1828 | | | | | | | |
| LATIMER, E | SEARS | 0 | 0 | 2 | 1959C | SALA, S | FERRI | 0 | 1 | 0 | 1005* | | | | | | | |
| LEUNG, G | EXCAL | 1 | 1 | 0 | 1487C | SALKRAUSKAS, A | FNRNK | 0 | 1 | 1 | 1882 | | | | | | | |
| LITVINIS, A | ALUPN | 4 | 0 | 1 | 2038 | SATLERLEE, D | FNRNK | 0 | 1 | 1 | 1776 | | | | | | | |
| LUDWIG, I | INDNS | 0 | 1 | 1 | 1866 | SAMDO, E | JCASE | 0 | 3 | 1 | 1413* | | | | | | | |
| MANKSLEK, K | ATTSK | 1 | 1 | 1 | 1170* | SCHUONVELD, S | WHEAT | 2 | 2 | 1 | 0000? | | | | | | | |
| MANKSLEK, N | MIRLA | 3 | 1 | 0 | 1853 | SCHULMAN, R | ZENIH | 1 | 1 | 2 | 1874C | | | | | | | |
| MCCLENDON, L | CUNBK | 1 | 1 | 0 | 1367* | SEDLICK, E | EXCAL | 0 | 0 | 1 | 1759 | | | | | | | |
| MCCLOUDGALL, A | KEMPK | 0 | 1 | 0 | 0000? | SHAFER, N | INDNS | 2 | 1 | 0 | 1504* | | | | | | | |
| MCHARRS, C | DRGNS | 0 | 1 | 0 | 1289* | SHAFER, N | TYRUS | 0 | 2 | 0 | 1467C | | | | | | | |
| MCKENZIE, J | WHEAT | 0 | 2 | 0 | 1274# | STIEBEL, K | CUNBK | 1 | 2 | 1 | 1441 | | | | | | | |
| MCKUINN, J | MIRLA | 2 | 1 | 2 | 2024 | STILVERBERG, A | FNRNK | 1 | 2 | 1 | 1872 | | | | | | | |
| MCKULICH, F | UJF | 1 | 2 | 0 | 1622 | SKINNER, S | KEMPK | 1 | 0 | 2 | 1889 | | | | | | | |
| MILULESKY, B | RADIO | 0 | 4 | 1 | 1413 | SKULSKI, I | ZENIH | 1 | 2 | 0 | 1126 | | | | | | | |
| MITCHELL, I | CUOPE | 0 | 2 | 1 | 1276# | SMT H, BR | TYRUS | 2 | 1 | 0 | 1513 | | | | | | | |
| MURPHY, L | CUNBK | 2 | 0 | 0 | 0000? | SOLLYMANI, S | ROCKW | 0 | 1 | 0 | 0000? | | | | | | | |
| MURPHY, M | EXCAL | 1 | 1 | 1 | 1285 | SUMHONG, M | CUNBK | 0 | 2 | 1 | 1801 | | | | | | | |
| MURPHY, M | FERRI | 1 | 0 | 0 | 0000? | SUP-KYCH, T | AMOLU | 1 | 1 | 1 | 1377 | | | | | | | |
| MURPHY, M | FNRNK | 0 | 0 | 1 | 1170* | SPANGLER, M | AMOLU | 1 | 0 | 0 | 1532 | | | | | | | |
| MURPHY, M | EXCAL | 1 | 3 | 0 | 1897 | SPIEGEL, L | FERRI | 2 | 1 | 0 | 1735 | | | | | | | |
| MURPHY, M | AMOLU | 1 | 1 | 1 | 1899 | STAMM, V | CHRGK | 0 | 1 | 1 | 1595C | | | | | | | |
| MURPHY, M | MIRLA | 2 | 1 | 0 | 1741D | STEVANOVIC, M | UJF | 1 | 2 | 1 | 2141 | | | | | | | |
| MURPHY, M | ZENIH | 0 | 1 | 0 | 1444 | STINSUN, M | DRGNS | 2 | 1 | 0 | 1820 | | | | | | | |
| MURPHY, M | MIRLA | 0 | 1 | 0 | 0000? | STULTZ, B | TYRUS | 1 | 0 | 1 | 1827 | | | | | | | |
| MURPHY, M | UJF | 1 | 0 | 1 | 1023* | STRAUBE, D | WHEAT | 1 | 3 | 0 | 1329* | | | | | | | |

U - UNRATED
- 5 TO 9 RATED GAMES
* - 10 TO 24 RATED GAMES

U - UNRATED
- 5 TO 9 RATED GAMES
* - 10 TO 24 RATED GAMES

U - UNRATED
- 5 TO 9 RATED GAMES
* - 10 TO 24 RATED GAMES

U - UNRATED
- 5 TO 9 RATED GAMES
* - 10 TO 24 RATED GAMES

U - UNRATED
- 5 TO 9 RATED GAMES
* - 10 TO 24 RATED GAMES

20-DEC-86 FIRST NAT'L BANK
ROUND 1 RD

| 1 | 2 | 3 | 4 | 5 | RATINGS SCORE | 6 |
|---|---|---|----|----|---------------|----|
| 1 | 2 | 3 | 4 | 5 | 1990 14 | 1 |
| 2 | 3 | 4 | 5 | 6 | 1525 17 | .5 |
| 3 | 4 | 5 | 6 | 7 | 1519 0 | .5 |
| 4 | 5 | 6 | 7 | 8 | 1486 0 | 0 |
| 5 | 6 | 7 | 8 | 9 | 1211 0 | 0 |
| 6 | 7 | 8 | 9 | 10 | 1585 0 | 0 |
| 7 | 8 | 9 | 10 | 11 | 1585 0 | 0 |

00-NOV-86 ALUMNI CENTRAL
ROUND 2 RD

| 1 | 2 | 3 | 4 | 5 | RATINGS SCORE | 6 |
|---|---|---|---|----|---------------|---|
| 1 | 2 | 3 | 4 | 5 | 2058-13 | 0 |
| 2 | 3 | 4 | 5 | 6 | 1842 30 | 1 |
| 3 | 4 | 5 | 6 | 7 | 0 0 | 0 |
| 4 | 5 | 6 | 7 | 8 | 1616-16 | 0 |
| 5 | 6 | 7 | 8 | 9 | 1509-16 | 0 |
| 6 | 7 | 8 | 9 | 10 | 1585 -9 | 0 |

13-NOV-86 CHI RD OF OPTIUNS EXCH
ROUND 2 RD

| 1 | 2 | 3 | 4 | 5 | RATINGS SCORE | 6 |
|---|---|---|---|----|---------------|---|
| 1 | 2 | 3 | 4 | 5 | 1851 0 | 1 |
| 2 | 3 | 4 | 5 | 6 | 1478-18 | 0 |
| 3 | 4 | 5 | 6 | 7 | 1530 0 | 1 |
| 4 | 5 | 6 | 7 | 8 | 1392 0 | 0 |
| 5 | 6 | 7 | 8 | 9 | 1405 0 | 1 |
| 6 | 7 | 8 | 9 | 10 | 1349 0 | 1 |

18-NOV-86 PRUCO CORP.
ROUND 2 RD

| 1 | 2 | 3 | 4 | 5 | RATINGS SCORE | 6 |
|---|---|---|---|----|---------------|---|
| 1 | 2 | 3 | 4 | 5 | 1702 -7 | 0 |
| 2 | 3 | 4 | 5 | 6 | 1517 24 | 1 |
| 3 | 4 | 5 | 6 | 7 | 1471-19 | 0 |
| 4 | 5 | 6 | 7 | 8 | 1124 -5 | 0 |
| 5 | 6 | 7 | 8 | 9 | 0 0 | 0 |
| 6 | 7 | 8 | 9 | 10 | 0 0 | 1 |

25-NOV-86 CONTINENTAL BANK
ROUND 3 RD

| 1 | 2 | 3 | 4 | 5 | RATINGS SCORE | 6 |
|---|---|---|----|----|---------------|---|
| 1 | 2 | 3 | 4 | 5 | 2241 3 | 1 |
| 2 | 3 | 4 | 5 | 6 | 1928 9 | 1 |
| 3 | 4 | 5 | 6 | 7 | 1638-29 | 0 |
| 4 | 5 | 6 | 7 | 8 | 1767 4 | 1 |
| 5 | 6 | 7 | 8 | 9 | 1656 11 | 1 |
| 6 | 7 | 8 | 9 | 10 | 1562 3 | 1 |
| 7 | 8 | 9 | 10 | 11 | 0 0 | 0 |

07-DEC-86 SEARS
ROUND 3 RD

| 1 | 2 | 3 | 4 | 5 | RATINGS SCORE | 6 |
|---|---|---|---|----|---------------|----|
| 1 | 2 | 3 | 4 | 5 | 2011 13 | .5 |
| 2 | 3 | 4 | 5 | 6 | 1520 20 | .5 |
| 3 | 4 | 5 | 6 | 7 | 1538 -6 | 0 |
| 4 | 5 | 6 | 7 | 8 | 1491 -3 | .5 |
| 5 | 6 | 7 | 8 | 9 | 0 0 | 0 |
| 6 | 7 | 8 | 9 | 10 | 1211-14 | 0 |

17-NOV-86 AT&T SECURIL
ROUND 3 RD

| 1 | 2 | 3 | 4 | 5 | RATINGS SCORE | 6 |
|---|---|---|---|----|---------------|----|
| 1 | 2 | 3 | 4 | 5 | 2010 -5 | .5 |
| 2 | 3 | 4 | 5 | 6 | 1879 5 | 1 |
| 3 | 4 | 5 | 6 | 7 | 1747 13 | 1 |
| 4 | 5 | 6 | 7 | 8 | 1702 7 | 1 |
| 5 | 6 | 7 | 8 | 9 | 1475 10 | 1 |
| 6 | 7 | 8 | 9 | 10 | 1467 0 | 1 |

19-NOV-86 MUTIKOLA
ROUND 3 RD

| 1 | 2 | 3 | 4 | 5 | RATINGS SCORE | 6 |
|---|---|---|---|----|---------------|----|
| 1 | 2 | 3 | 4 | 5 | 2079-20 | .5 |
| 2 | 3 | 4 | 5 | 6 | 1900 6 | 1 |
| 3 | 4 | 5 | 6 | 7 | 1839 4 | 1 |
| 4 | 5 | 6 | 7 | 8 | 1714 0 | 1 |
| 5 | 6 | 7 | 8 | 9 | 1423 4 | 1 |
| 6 | 7 | 8 | 9 | 10 | 1294 0 | 1F |

20-NOV-86 EXEMPLARS
ROUND 3 RD

| 1 | 2 | 3 | 4 | 5 | RATINGS SCORE | 6 |
|---|---|---|---|----|---------------|----|
| 1 | 2 | 3 | 4 | 5 | 2081 10 | 1 |
| 2 | 3 | 4 | 5 | 6 | 1690 3 | .5 |
| 3 | 4 | 5 | 6 | 7 | 1572 4 | .5 |
| 4 | 5 | 6 | 7 | 8 | 1222 17 | 1 |
| 5 | 6 | 7 | 8 | 9 | 0 0 | 0F |
| 6 | 7 | 8 | 9 | 10 | 0 0 | 0F |

24-NOV-86 EXCALIBURS
ROUND 3 RD

| 1 | 2 | 3 | 4 | 5 | RATINGS SCORE | 6 |
|---|---|---|---|----|---------------|---|
| 1 | 2 | 3 | 4 | 5 | 1978 -9 | 0 |
| 2 | 3 | 4 | 5 | 6 | 1963 6 | 1 |
| 3 | 4 | 5 | 6 | 7 | 1834 5 | 1 |
| 4 | 5 | 6 | 7 | 8 | 1858 4 | 1 |
| 5 | 6 | 7 | 8 | 9 | 1730 4 | 1 |
| 6 | 7 | 8 | 9 | 10 | 1568 4 | 1 |

01-DEC-86 EXEMPLARS
ROUND 4 RD

| 1 | 2 | 3 | 4 | 5 | RATINGS SCORE | 6 |
|---|---|---|---|----|---------------|---|
| 1 | 2 | 3 | 4 | 5 | 2091 17 | 1 |
| 2 | 3 | 4 | 5 | 6 | 2092 10 | 1 |
| 3 | 4 | 5 | 6 | 7 | 1693-11 | 0 |
| 4 | 5 | 6 | 7 | 8 | 1575-12 | 0 |
| 5 | 6 | 7 | 8 | 9 | 1610-16 | 0 |
| 6 | 7 | 8 | 9 | 10 | 1239 35 | 1 |

04-DEC-86 EXCALIBURS
ROUND 4 RD

| 1 | 2 | 3 | 4 | 5 | RATINGS SCORE | 6 |
|---|---|---|---|----|---------------|----|
| 1 | 2 | 3 | 4 | 5 | 1969-11 | .5 |
| 2 | 3 | 4 | 5 | 6 | 1837 0 | 0F |
| 3 | 4 | 5 | 6 | 7 | 1734 0 | 0 |
| 4 | 5 | 6 | 7 | 8 | 1799 0 | 1 |
| 5 | 6 | 7 | 8 | 9 | 1835 0 | 1 |
| 6 | 7 | 8 | 9 | 10 | 1572 0 | 1F |

FELPER INSURANCE
RATINGS SCORE

| | | |
|---------|----|----|
| 1880 | 7 | .5 |
| 1591 | -7 | 0 |
| 1596-13 | 0 | 0 |
| 1402 | -7 | 0 |
| 1263-10 | 0 | 0 |
| 0 | 0 | 0 |

FEL-PRO
RATINGS SCORE

| | | |
|------|----|----|
| 1616 | 20 | .5 |
| 1578 | -6 | 0 |
| 1433 | -4 | 0 |
| 853 | 0 | 0 |
| 1004 | -4 | 0 |
| 0 | 0 | 0 |

ZENITH-BLENVIEW
RATINGS SCORE

| | | |
|---------|----|----|
| 1857 | -6 | 0 |
| 1732 | -3 | .5 |
| 1626 | -4 | .5 |
| 1143-17 | 0 | 0 |
| 0 | 0 | 0 |
| 0 | 0 | 0 |

UOP PROCESS DIV.
RATINGS SCORE

| | | |
|------|----|---|
| 2128 | 13 | 1 |
| 1628 | -6 | 0 |
| 1544 | -7 | 0 |
| 1459 | -4 | 0 |
| 1408 | -6 | 0 |
| 1259 | -7 | 0 |

AT&T SKOKIE
RATINGS SCORE

| | |
|---------|----|
| 2005-11 | 0 |
| 1876-10 | 0 |
| 1880 | 8 |
| 1760 | 12 |
| 1709 | 16 |
| 1467-35 | 0 |

FEL-PRO
RATINGS SCORE

| | | |
|------|----|----|
| 1636 | 17 | .5 |
| 1429 | 0 | 1F |
| 0 | 0 | 1 |
| 0 | 0 | 0 |
| 1000 | 0 | 0 |
| 0 | 0 | 0 |

| 04-DEC-86 PATRICIA A | 4 | ZENITH-GLENVIEW | 2 | 03-DEC-86 A & B RADIO | 2.5 | BELL LABS DRAGONS | 3.5 |
|----------------------|---------------|-----------------|---------------|-----------------------|---------------|-------------------|---------------|
| ROUND 4 BU | RATINGS SCORE | RATINGS SCORE | RATINGS SCORE | ROUND 4 BU | RATINGS SCORE | ROUND 5 BU | RATINGS SCORE |
| 1 BRINE, B | 2059-35 | 1851-23 | 1 | 1 MURKOLECKY, B | 1423-10 | 1423-10 | 0 |
| 2 BRUNO, U | 1706-33 | 1729-33 | 1 | 2 O'DELL, DM | 1460-13 | 1460-13 | 0 |
| 3 BRACKENBUSH, B | 1843-10 | 1622-10 | 0 | 3 LASKY, J | 1191-30 | 1191-30 | 0 |
| 4 BRACKENBUSH, N | 1714 0 | 1126 0 | 0F | 4 LASKY, N | 1429 0 | 1429 0 | 0 |
| 5 BRUPP, J | 1741 0 | 0 0 | 0 | 5 HUMPF, R | 0 0 | 0 0 | 0 |
| 6 WAGNER, VA | 1427 0 | 1275 0 | 0F | 6 WEISNER, A | 1191-2 | 1191-2 | 0 |
| 7 GRAYBLES, J | 1294 0 | 0 0 | 0 (MIRLA) | | | | |

| 05-NOV-86 APRUD RESEARCH | 2.5 | ARGONNE KNOCKS | 3.5 | 10-DEC-86 ARGONNE KNIGHTS | 4.5 | EXECUTIONERS | 1.5 |
|--------------------------|---------------|----------------|---------------|---------------------------|---------------|--------------|---------------|
| ROUND 3 BU | RATINGS SCORE | RATINGS SCORE | RATINGS SCORE | ROUND 5 BU | RATINGS SCORE | ROUND 5 BU | RATINGS SCORE |
| 1 BRUCE, M | 1912-13 | 2067 9 | 1 | 1 BENDER, R | 2050 9 | 2050 9 | 1 |
| 2 BRUB, B | 1570-17 | 1871 5 | 1 | 2 YUING, C | 1872-5 | 1872-5 | 0 |
| 3 BRUB, J | 1670-16 | 1765 16 | 1 | 3 DEGMAN, S | 1658 19 | 1658 19 | 1 |
| 4 KIRKLAND, I | 1375 0 | 0 0 | 0 | 4 BRUNAL, D | 1650 0 | 1650 0 | 0 |
| 5 SHAW, P | 976 29 | 1077-29 | 1 | 5 KELLOGG, K | 1637 10 | 1637 10 | 1 |
| 6 BLIVEILL, M | 0 0 | 0 0 | 0F | 6 DAVIDOFF, G | 0 0 | 0 0 | 0 |
| 7 BLIVEILL, M | 0 0 | 1563 0 | 1 (AMOCU) | | | | |

| 11-NOV-86 ARGONNE KNOCKS | 4 | WHEATON COLLEGE | 2 | 15-DEC-86 BELL LABS DRAGONS | 4 | J. I. CASE | 2 |
|--------------------------|---------------|-----------------|---------------|-----------------------------|---------------|------------|---------------|
| ROUND 4 BU | RATINGS SCORE | RATINGS SCORE | RATINGS SCORE | ROUND 5 BU | RATINGS SCORE | ROUND 5 BU | RATINGS SCORE |
| 1 STREETS, D | 2076 5 | 1705-7 | 0 | 1 SINSUN, N | 1809 11 | 1809 11 | 1 |
| 2 BERRY, G | 1876 5 | 1614-8 | 0 | 2 KUSLEY, D | 1660 9 | 1660 9 | 1 |
| 3 ULMSIEK, G | 0 0 | 1324 0 | 1 | 3 HAHNE, D | 1200 32 | 1200 32 | 0 |
| 4 JORGENSEN, B | 1781 2 | 1202-2 | 0 | 4 BRANDI, W | 1153-16 | 1153-16 | 0 |
| 5 GREEN, D | 1612 0 | 0 0 | 0 | 5 KELLY, S | 1333 0 | 1333 0 | 1 |
| 6 PROFSCH, K | 0 0 | 1056 0 | 0F | 6 MCHANE, C | 1329-36 | 1329-36 | 0 |
| (WHEAT) 7 KRIEGER, K | 0 0 | 1056 0 | 0F | | | | |
| (WHEAT) 8 KELLY, C | 0 0 | 1329 0 | 0 | | | | |
| (WHEAT) 9 HARRISON, I | 1200 0 | 0 0 | 0 | | | | |

| 02-DEC-86 J. I. CASE | 1 | AT&T CHARGERS | 5 | 17-DEC-86 ROCKWELL INT'L | 4 | A & B RADIO | 2 |
|----------------------|---------------|---------------|---------------|--------------------------|---------------|-------------|---------------|
| ROUND 4 BU | RATINGS SCORE | RATINGS SCORE | RATINGS SCORE | ROUND 5 BU | RATINGS SCORE | ROUND 5 BU | RATINGS SCORE |
| 1 SATTLELEE, D | 1517-5 | 1984 3 | 1 | 1 SAMELSON, C | 1776 0 | 1776 0 | 0F |
| 2 SANDU, E | 1430-8 | 1704 5 | 1 | 2 JONES, B | 0 0 | 0 0 | 0 |
| 3 KANAS, W | 1261-7 | 1563 4 | 1 | 3 KAFACZ, T | 1478 20 | 1478 20 | 1 |
| 4 TUGAMI, F | 0 0 | 1585 0 | 1 | 4 PUFFS, W | 1589 0 | 1589 0 | 0F |
| 5 KELD, C | 0 0 | 1515 0 | 1 | 5 DEWITT, G | 1424 7 | 1424 7 | 1 |
| 6 YALLMAN, W | 1095 0 | 1360 0 | 0F | 6 NAHMANIAN, S | 0 0 | 0 0 | 0 |

| 02-DEC-86 EXECUTIONERS | 2.5 | ROCKWELL INT'L | 3.5 |
|------------------------|---------------|----------------|---------------|
| ROUND 4 BU | RATINGS SCORE | RATINGS SCORE | RATINGS SCORE |
| 1 MURRAY, C | 1745-34 | 1742-34 | 1 |
| 2 SWANSON, V | 1742 0 | 0 0 | 1 |
| 3 GARESCHE, P | 1479 31 | 1620-31 | 0 |
| 4 MURPHY, D | 1273 12 | 1462-12 | 0 |
| 5 HEALY, S | 1273-11 | 1467 11 | 1 |
| 6 HEARILL, W | 0 0 | 1424 0 | 0F |

Solution to problems:

- #1. Mate in 4: 1. ... Be3+!! 2. Nxe3 Qh2+ 3. Kf1 Rxf3+ 4. Bxf3 Qf2 mate.
- #2. Black must settle for a draw here: 1. ... Ka8 2. Rh8+ Ka7 3. Rn7+ Ka8 = (if 3. ... Bb7 4. Rd7 +-). Trying to avoid this with 1. ... Kc8 loses to 2. Rc7+! Kd8 (2. ... Kb8 3. Rxc6+ and 4. Rd6 +-) 3. Rxc6! d1=Q 4. Rd6+ Qxd6 5. Bxd6 +-.