

# Chicago Industrial Chess League

Bulletin 5 Volume 31  
February 1988

## NORTH DIVISION 02/06/88

TEAM NAME				GAME	MATCH	PCT
	W	L	D	POINTS	POINTS	
AT&T SKOKIE	4	0	0	15.0	4.0	1.000
EXCALIBURS	3	1	0	15.0	3.0	0.750
EXEMPLARS	3	1	0	13.5	3.0	0.750
MOTOROLA	2	3	0	15.0	2.0	0.400
KEMPER INSURANCE	1	3	1	12.0	1.5	0.300
FEL-PRO	0	2	2	10.0	1.0	0.250
UOF PROCESS DIV.	0	3	1	7.5	0.5	0.125

## EAST DIVISION 02/06/88

TEAM NAME				GAME	MATCH	PCT
	W	L	D	POINTS	POINTS	
ALUMNI CENTRAL	4	1	0	22.0	4.0	0.800
CHI BD OF OPTIONS EXCH	3	0	1	14.5	3.5	0.875
AMOCO CORP.	2	1	1	11.5	2.5	0.625
SEARS	2	1	0	11.5	2.0	0.667
CONTINENTAL BANK	0	5	1	10.5	0.5	0.083
CHICAGO POST OFFICE	0	3	1	8.0	0.5	0.125

## NEAR WEST DIVISION 02/06/88

TEAM NAME				GAME	MATCH	PCT
	W	L	D	POINTS	POINTS	
ARGONNE KNIGHTS	7	0	0	34.5	7.0	1.000
AT&T CHARGERS	4	2	0	20.0	4.0	0.667
ROCKWELL INT'L	3	3	0	20.0	3.0	0.500
BELL LABS DRAGONS	3	4	0	18.0	3.0	0.429
A & B RADIO	1	4	1	12.0	1.5	0.250
J. I. CASE	0	5	1	8.5	0.5	0.083

## FAR WEST DIVISION 02/06/88

TEAM NAME				GAME	MATCH	PCT
	W	L	D	POINTS	POINTS	
WHEATON COLLEGE	5	0	1	24.0	5.5	0.917
FERMILAB	4	1	1	20.0	4.5	0.750
TELLABS	3	3	0	20.0	3.0	0.500
AT&T TYROS	3	3	0	17.0	3.0	0.500
BELL LABS INDIANS	1	4	1	15.0	1.5	0.250
ARGONNE ROOKS	1	3	1	15.0	1.5	0.300
AMOCO RESEARCH LABS	1	4	0	9.0	1.0	0.200

NORTH DIVISION TOP TEN

MCNEIL, B	MTRLA 2123
TEGEL, F	ATTSK 2073D
STEVANOVIC, M	UDF 2070
WONG, P	EXMPL 2060C
CREWSE, L	EXMPL 2007
LEONG, G	EXCAL 1997
SIWEK, M	KEMPR 1973
BLOOM, B	MTRLA 1938
BUERGER, E	EXCAL 1924C
KRAKAU, H	EXMPL 1902

EAST DIVISION TOP TEN

RIZZITANO, J	CBOPE 2581
BLOCKER, C	CBOPE 2555
GRUCHACZ, R	CBOPE 2485
GILES, M	SEARS 2456
LONOFF, M	CBOPE 2337
REYES, R	SEARS 2214C
CZERNIECKI, A	ALUMN 2184C
INUMERABLE, F	PSTOF 2161
KRAS, T	ALUMN 2154
GREGORY, J	PSTOF 2085

NEAR WEST DIVISION TOP TEN

LEVINE, D	KNGHT 2298
BOLDEN, D	KNGHT 2069
WARREN, J	CHRGR 2050D
JONES, B	ROCKW 2035*
BENEDEK, R	KNGHT 2030C
MARCOWKA, R	CHRGR 1905C
YOUNG, C	KNGHT 1849C
SAMELSON, C	ROCKW 1787
STINSON, M	DRGNS 1779
KUMRO, D	CHRGR 1709D

FAR WEST DIVISION TOP TEN

STEIN, P	TELAB 2140
MOTTA, H	FERMI 2099*
STREETS, D	ROOKS 2027C
LUDWIG, T	INDNS 1986
WHEATLEY, D	TYROS 1971
WALHOUT, F	WHEAT 1923
NAGLE, M	AMOCO 1917
SAGALOVSKY, L	FERMI 1913
UNDERWOOD, W	WHEAT 1901
BERRY, G	ROOKS 1898D

MOST IMPROVED PLAYERS

WIENS, P	WHEAT	85
MCNEIL, B	MTRLA	78
HICKS, C	INDNS	69
LANNOYE, D	CBOPE	66
SAMELSON, C	ROCKW	57
STEIN, P	TELAB	53
BAKER, B	FLPRO	53
MCQUINN, J	ROCKW	51
WEITZ, R	FLPRO	47
LASKY, J	RADIO	46

Report from the East Division Chairman Russ Rzeszutko:

Welcome to some new strong players in the CICL (East Divison)...

- IM James Rizzitano (USCF 2573)
- IM Calvin Blocker (USCF 2551)
- SM Morris Giles (USCF 2449)
- Florentino Inumerable (USCF 2175)
- Jamie Gregory (USCF 2107)

...and welcome to the entire Chicago Post Office Team!

On December 2, 1987, Sears beat the Alumni Central by the score of 4-2, aided by new Sears team member Morris Giles. This victory ends Alumni Central's undefeated streak of 34 consecutive matches, which is probably a league record (33 wins = 1 tie - 3 division championships = 2 alumni championships). Credit is due to the team captains Ray Fabijonas and Marty Franek for keeping the team organized during this time.

# Mikhail Tal At 1988 National Open



March 18-20

**Illinois**  
**1988 National Open in Chicago — \$16,000 Guaranteed.** 6-SS, 45/2, 25/1, Chicago Holiday Inn O'Hare, 5440 N. River Rd., Rosemont, IL, 5 minutes from O'Hare Airport, free hotel Limousine Service at 15-min. intervals. \$\$ 16,000 Gtd. 2 sections: **Championship**, EF: \$65 if mailed by 3/5. \$\$G: 3500-2000-1000-800-700-500, Exp. 300-400-200, A 800-400-200. Winner receives replica of Edmondson Cup. Reserve, open to under 1800. EF: \$60 if mailed by 3/5. \$\$G: 1000-500-300-200-150, C 700-350-200, D/E 600-300-200, Unr. 200 (Unr. not eligible for top prizes in this section). \$100 biggest upset award in each section donated by Fred Gruenberg. ; trophies to top grammar school & HS student in each section. **Both**, EF: \$10 more at site. 1/2-pt. bye in first or last rd. if requested before start of tmt. MasterCard, VISA, American Express accepted by USCF until 3/7, but not at door: phone USCF (914) 562-8350. Reg. 6-9 p.m. Thurs. 3/17, 8:30-11:30 a.m. Fri., Rds. 1-7:30, 10-5, 10-5. HR: \$62 double triple or quad., reserve early (before 2/20): 1-312-671-6350 or 1-800-HOLIDAY. Contact the chief organizer if you wish to be assigned to share a quad at only \$15.50 per night. Special Activities Thurs. Eve 3/17: 3-game 10 minute blitz match featuring U.S. Champion Joel Benjamin and contender Maxim Dlugy, free to entrants 7 p.m. and National Open Speed tmt., 8 p.m. EF: \$11. Benjamin and Dlugy 60 board simul also starts at 8 p.m. EF: only \$15 to entrants, \$25 to non-entrants. Large selection of chess books and supplies on sale. For further info. write or call chief organizer Richard Verber, 2725 West 84th St., Chicago, IL 60652, (312) 434-2118. Co-sponsored by USCF and the Chicago Chess Association. American Airlines, the official airline of the 1988 National Open, is offering special fares to Chicago. Phone 1-800-433-1790 and ask for Star File #S-14099 to receive bargain fares. Ent: U.S. Chess Federation, Attn: 1988 National Open entries, 186 Route 9W, New Windsor, NY 12550. NS.

Grand Prix Points Available: 120

FIDE rated

International Grandmaster and former World Champion Mikhail Tal will be playing in the National Open to be held here in Chicago in March. Tal will be in Chicago from Tuesday March 15 thru Tuesday March 22. He will be playing a 30 board simul at the Holiday Inn O'Hare on Wednesday March 16, following his lecture with time for questions and answers. The lecture will begin at about 7 PM. Lecture and simul fee will be \$40.00. Lecture and spectator fee will be \$10.00. (Contact Richard Verber at 434-2118.) Tal will also be giving a lecture and playing a simul at the Park Forest Chess Club on Thursday evening March 17. (Contact Wayne Palmquist at 361-2571.)

You can also expect to see the World Champion Computer HITECH along with its creators Hans Berliner and Carl Ebeling at the National Open.

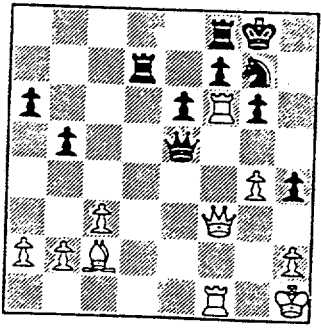
There has been some communication between Vince McCambridge of the USCF office and the Soviet Chess Federation, such that the CICL is challenging the Trade Union League of Kiev to a match. If you are interested in the status of this possibility, contact Russ Rzeszutko.

The telephone match scheduled for March 12 against the NYCCL was planned to be held at Kemper Insurance on Rte. 22 in Long Grove. However, Kemper is unable to provide the necessary WATTS line required for the 16 board match that would last from about 9 AM - 3 PM. Unless another site can be found, this match will not take place. Contact Russ Rzeszutko or Marty Franek with any possibilities.

Entry #9 Best Overall Game

White: L. Sagalovsky (FERMI 1906) Black: B. Stoltz (TYROS 1808)  
October 27, 1987  
Fermilabs vs. AT&T Tyros (Board 2)

1. e4 c5 2. Nf3 Nc6 3. d4 cxd4 4. Nxd4 Nf6 5. Nc3 d6 6. Bc4 e6 7. Bb3  
a6 8. Be3 Be7 9. O=O (Another more ambitious way may be 9. Qe2 followed  
by O=O=O.) O=O 10. f4 Qc7 11. Kh1 (Too passive. 11. a4 is possible or  
perhaps 11. Qf3 Na5 12. g4 b5 13. g5 Nd7 14. f5 [or 14. Re1 Bb7 15. f5  
Ne5 16. Qg3 unclear] Nxb3 15. axb3 b4 16. Ncb5 Qb7 [or 16....Qd8 17. Nc6 ±]  
17. f6) Nxd4 12. Bxd4 b5 13. e5 dxe5 (Better is 13....Ne8) 14. Bxe5 Qd7  
15. Qf3 Bb7 16. Qg3 Qc6 17. Rae1 Nh5 18. Qg4! (Now Black cannot reply w/  
18....f6? because of 19. Bxe6+!) Bf6 (After 18....Nf6 White might concede a  
draw by repetition. If 19. Qh3 Nd7.) 19. Ne4 Bxe5 20. fxe5 g6 21. Rf3  
Qc7! 22. Rh3 (If 22. Rc3 Qxe5! Although it seems White stands better, it  
is not clear how White can press this positional advantage.) Bxe4 23. Rxe4  
Ng7 24. Qh4 h5 25. Qf6? (This move allows Black to regroup. Perhaps 25.  
c3 is better. 25....Qd8 26. Qg3 planning Reh4 and Bc2.) Qd8 26. Qf3 Ra7  
27. g4 Rd7 28. c3 Qg5 29. Rg3 h4 30. Rg1 Rfd8 (Now Black's position has  
improved substantially.) 31. Rf1 Qe7 32. Rf4 Rf8 33. Bc2 Qg5 34. Rf6  
Qxe5



Position after 34....Qxe5

35. Bxg6! (If 35. Rxg6? Rd2! [35....fxg6 36.  
Qxf8+ Kh7]) Nf5! 36. Bxf5 Rd2! (If ...  
36....Qxf6? 37. Bh7+) 37. Qf4 Qxf4 38. Rxg4  
h3?? (A grave mistake. But after 38....exf5!  
39. R4xf5 Rxb2! followed by 40....Rxa2! since  
40. Rxa6?? Rb1+ 41. Rf1 Rxf1 mate. It may be  
White who is now struggling to gain a draw!)  
39. Bxe6! (White's Bishop must escape the  
f-file. Now Black's hopes are dashed.) Rd1+  
40. Rf1 Rxf1+ 41. Rxf1 fxe6 42. Rxf8+ Kxf8  
(And White proceeds to win the K+P endgame.)  
43. Kg1 Kf7 44. Kf2 Kf6 45. Kg3 Kg5 46. Kf3

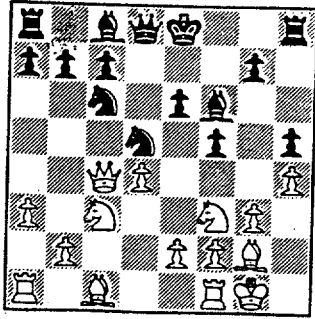
e5 47. b3 e4+ 48. Kxe4 Black Resigns [1=0]

Entry #10 Best Attack / Sacrifice Leading to Victory

White: Don Graft (TELABS 1696) Black: Joe Brozovich (TYROS 1748)  
January 7, 1988  
Tellabs vs. AT&T Tyros (Board 2)

1. Nf3 d5 2. g3 Nc6 (Perhaps it is too early to commit the Knight to this  
square.) 3. d4 (In BCO, Kasparov gives 3. Bg2 +=. But this move transposes  
into a Catalan where Black cannot play an early c5.) e6 (Perhaps 3...Bf5!?)  
4. Bg2 Be7 5. O=O h5?! 6. h4 (Black's King-side will become weaker than  
White's. The square g5 later becomes an important outpost for White.) f6?!  
(Black hopes to play ...g5 with a King-side attack. But this also weakens  
Black's King-side, giving White a potential outpost on g6.) 7. Qd3! f5?!  
(Inconsistent with Black's previous move. This completely alters Black's  
possibilities. 7....Kf7 would be more consistent, but then of course there  
would be no possibility for the King to escape to the Queen-side with  
...O=O=O.) 8. a3 Nf6 9. c4 dxc4 (This appears to concede the center;  
9....O=O seems a possibility.) 10. Qxc4 Nd5 (Black is still looking for an  
attack. 10....Qd5, intending OMO and Bd7, seems safer.) 11. Nc3 Bf6  
(Black's King has dawdled in the center too long.)

(Continued from previous page)



Position after 11....Bf6

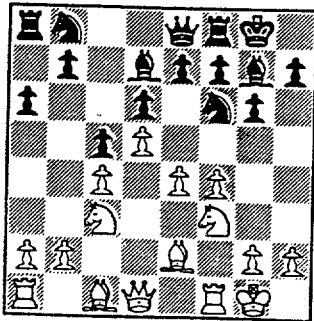
12. e4! (An interesting positional Pawn sacrifice.) Nxc3?! (If 12....Nb6 13. Qe2 Bxd4 [or 13....0-0 14. e5 Be7 15. Rd1 ±] 14. exf5! and now not 14....e5 15. Nxd4 Qxd4 16. Nb5! Qd7 17. Bxc6 bxc6 18. Qxe5+ Kf8 19. Nxc7.) 13. bxc3 fxe4 (13....0-0 14. exf5!) 14. Ng5 Qd5 15. Qe2 Bxg5? (15....0-0 allows Qxh5 but better would be 15....Qa5 16. Nxe4 ± [16. Qxe4!? Qxc3 17. Nxe6 is unclear]) 16. Bxg5 Bd7? (Again, 16....Qa5 is better but even so 17. Rfc1, planning Bxe4, would leave Black underdeveloped, saddled with weak squares and Pawns, with his King trapped in the center, subject to immediate attack. The move played allows a pretty

conclusion.) 17. Bxe4 Qd6 18. Bg6+ Kf8 19. Qf3+ [1-0]

Entry #11 Best Upset Victory

White: C. Hicks (INDNS 1276) Black: I. Gaines (FERMI 1701)  
January 20, 1988  
Bell Labs Indians vs. Fermilabs

1. d4 Nf6 2. c4 g6 3. Nc3 Bg7 4. e4 d6 5. f4 c5 6. d5 0-0 7. Be2 a6 (Black begins a series of three moves aimed at supporting a Queen-side break with ...b5, but it allows White a lot of time to develop pressure of the King-side. An alternative might have been 7....e6 8. dxe6 fxe6 [or even 8....Bxc6]. Black cannot fail to consider White's potential on the King-side. White's e5 will be a strong break that must be anticipated. The position is similar to the structure of a Benko Gambit, where Black does not bother supporting the break ....b5, but rather sac's the b-pawn. Perhaps that also would be possible here.) 8. Nf3 Bd7 9. 0-0 Qe8?! (Black already faces difficulties dealing with the oncoming e5 and has a shortage of viable alternatives.)



Position after 9....Qe8?!

10. e5! Ng4 (threatening 11....dxe5 12. fxe5 Nxe5 13. Nxe5 Bxe5 winning a Pawn.) 11. Ng5! (Not giving Black time liquidate the center. Now White threatens 12. Bxg4 Bxg4 13. Qxg4 and also 12. e6!) h5 12. e6! fxe6 13. dxe6 (White has broken open Black's King-side and threatens 14. Bxg4! hxg4 15. Qxg4 intending Qh4 and Qh7 mate as well as 14. exd7!) Bd4+ (Black goes for complications, giving up two pieces for a Rook.) 14. Kh1 Nf2+ 15. Rxf2 Bxf2 16. exd7 Nxd7? (Perhaps Black's fatal error. 16....Qxd7 was required to

minimize White's advantage. White would then build up with moves such as Nd5, Qc2, Be3, etc.) 17. Ne6! Qf7 18. Nxf8 Rxf8 (From here White carefully steers his extra piece to victory keeping Black well under control... not allowing any significant counterplay.) 19. Qd5 Qxd5 20. Nxd5 e6 21. Nc3 e5 22. Nd5 exf4 23. Bxf4 Ne5 24. Rf1 Bd4 25. b3 Ng4 26. g3 Nf2+ 27. Kg2 Ne4 28. h4 Re8 29. Bd3 b5 30. Kf3 Nc3 31. Nxc3 Bxc3 32. Bxg6 Re6 33. Bxh5 bxc4 34. bxc4 Rf6 35. Ke4 Be5 36. Rd1 Bxf4 37. gxf4 Rh6 38. Rg1+ Kf8 39. Rg5 Re6+ 40. Kd5 Re2?? 41. Bxe2 [1-0]



NAME	TEAM	W	L	D	RATING	NAME	TEAM	W	L	D	RATING	NAME	TEAM	W	L	D	RATING	TEAM	W	L	D	RATING	
LESTER, M	FSTDF	0	1	0	1611	PARKER, M	ROCKW	0	0	0	0000?	SMILEY, R	AMCRF	1	1	0	1840	INDNS	0	0	0	0000?	
LEVINE, D	KNIGHT	5	0	0	2298	PATEL, R	CONBK	0	0	0	0000?	SMITH, BR	TYROS	0	1	0	1509	ROOKS	0	0	0	1282#	
LEWIS, L	ZENTH	0	0	0	0000?	PEPPERS, G	MTRLA	1	0	0	0000?	SMITH, M	FNBK	0	0	0	1550	WHEAT	4	0	2	1901	
LITVINAS, A	ALUMN	5	0	0	1677C	PETERS, M	ROCKW	0	0	0	0000?	SOLBERG, R	CONBK	0	0	0	0000?	DRGNS	0	0	0	1174	
LONDFF, M	CBOPE	1	0	0	2337	PETERS, S	CONBK	0	2	1	0000?	SOLBERG, S	ROCKW	0	0	0	0000?	FERMI	0	0	0	1779*	
LUDWIG, T	INDNS	3	2	2	1986	PETERSON, B	CONBK	0	0	0	0000?	SOLNER, J	DRGNS	0	1	0	1662*	KEMPR	0	0	1	1808	
MALMAREN, M	AMCRF	0	0	0	0000?	PETERSON, F	EXMPL	0	0	0	0000?	SOMBOCH, M	CONBK	0	3	2	1766	MTRLA	0	2	0	1724	
MANASTER, R	ATTSK	2	0	1	1875	PODGORNIAK, P	ROCKW	0	0	0	0000?	SOPRYCH, T	AMCRF	0	0	2	1515	ATTSK	0	0	0	1517*	
MANZKE, R	ATTSK	0	0	0	1145*	POKATILOFF, W	FLPRO	0	0	0	1326	SPANGLER, M	AMCRF	0	3	1	1361	WHEAT	1	2	4	1923	
MARCOWKA, R	CHGR	1	1	0	1905C	POPPS, W	ROCKW	0	0	0	1589	SPANGLER, M	AMCRF	0	3	1	1361	WHEAT	1	2	4	1923	
MARTIN, W	CONBK	0	0	0	0000?	PROKSCH, R	ROCKW	0	0	0	1594C	SPANGLER, M	AMCRF	0	3	1	1361	WHEAT	1	2	4	1923	
MATHUR, P	MTRLA	1	2	0	1839	RADAVICICUS, E	CHGR	2	1	1	1504C	STEIN, P	CHGR	5	1	0	1804	WHEAT	4	1	1	1672*	
MCCALLON, J	INDNS	0	1	0	0000?	RAFACZ, T	ROCKW	1	3	1	1512	STELTEN, N	TELAB	5	1	1	2140	WHEAT	4	2	1	1369C	
MCCLENDON, L	WHEAT	0	1	0	1135#	RAHMANIAN, S	ROCKW	0	0	0	0000?	STEVANOVIC, M	TELAB	5	1	1	2070	WHEAT	4	2	1	1664C	
MCDUGALL, A	CONBK	0	0	0	1346	REDD, S	FNBK	0	0	0	0000?	STINSUN, M	DRGNS	1	4	0	1779	CHGR	4	1	0	20500	
MCHARG, C	DRGNS	0	0	0	1289*	REDEY, E	ROOKS	1	0	0	1058*	STOLTZ, H	TYROS	1	1	1	1808	INDNS	0	0	0	1842	
MCKEE, M	TELAB	1	0	0	0000?	REED, L	PSTDF	1	1	0	0000?	STRAUBE, D	WHEAT	0	0	0	1296*	ZENTH	0	0	0	1284	
MCKENZIE, J	WHEAT	1	0	0	1387#	REID, C	JCASE	1	5	0	1176*	STREETS, D	ROOKS	0	2	1	2027C	AMCRF	1	1	1	2040	
MCNEIL, B	MTRLA	4	0	1	2123	RIBOT, A	SEARS	2	1	0	2214C	STUHLEBARK, D	UOP	1	1	1	1428	RADIO	1	3	1	1186	
MCGINN, J	ROCKW	4	2	0	1483	RINGENBERG, T	AMOCO	0	1	0	1314*	SUE, H	DRGNS	0	0	0	1476	FLPRO	3	1	0	1683	
MICKLICH, F	ROOKS	0	3	1	1655	RIZZITANO, J	CBOPE	2	0	0	2581	SUERTH, F	ATTSK	0	0	0	1410	AMCRF	1	1	0	1528	
MIKULOVICH, S	ROOKS	0	1	0	1764D	ROMAN, J	CBOPE	2	0	0	0000?	SULLIVAN, J	EXMPL	2	1	1	1648	TYROS	3	2	2	1971	
MILKULECKY, B	RADIO	2	3	1	1410	ROSING, G	CBOPE	1	0	0	1401*	SUMMERS, D	EXCAL	3	0	1	1792C	JCASE	1	1	1	1544	
MITCHELL, T	CBOPE	0	0	0	1435#	ROSLY, D	DRGNS	2	3	1	1702	SWANSON, V	EXCAL	0	0	0	1667	ROOKS	1	1	0	1229*	
MONZANI, A	FLPRO	0	0	0	1670	RZESZUTKO, R	ALUMN	3	0	0	1833	TASKER, I	CHGR	0	0	0	1360C	WHEAT	5	0	1	1354	
MOODY, L	CONBK	0	0	0	0000?	SABADOS, P	AMOCO	0	0	0	1002*	TAYLOR, F	KOURS	1	0	1	1424#	WHEAT	0	1	0	0000?	
MOORE, D	EXECU	0	0	0	1308	SAGALOVSKY, L	FERMI	5	1	1	1913	TEGEL, F	WHEAT	1	3	0	0000?	FNBK	0	0	0	0000?	
MUTTA, H	FERMI	1	2	2	2099*	SAJKOWSKI, D	AMOCO	2	1	2	1658*	TENNIE, E	FLPRO	0	0	0	0000?	INDNS	0	0	0	1532	
MUELDNER, R	FNBK	0	1	0	1450#	SALKAUSKAS, A	FERMI	0	0	0	1805	THOMAS, G	ATTSK	3	0	2	2073D	EXMPL	2	1	1	1962	
MUIR, L	AMOCO	0	1	0	1521C	SAMELSON, C	FNBK	0	0	0	0000?	THOMAS, J	TELAB	0	1	0	0000?	AMOCO	0	0	0	2060C	
MUNOZ, A	DRGNS	1	2	0	1247	SAPITRO, J	ROCKW	3	1	1	1787	THOMAS, J	TYROS	0	0	0	1373	KNIGHT	3	0	2	1849C	
MUSGRAVE, C	EXECU	0	1	0	1878	SATTERLEE, D	FNBK	0	0	0	1542	THOMPSON, M	CHGR	3	0	0	1531C	ROOKS	0	1	0	0000?	
MYERS, W	CONBK	0	0	0	1528*	SAWDO, E	JCASE	0	0	0	1585	THOMPSON, R	AMOCO	0	2	1	0000?	ROOKS	0	0	0	1461*	
NAGLE, M	AMOCO	1	3	1	1917	SCHODONVELD, S	JCASE	0	0	0	1447	THOMPSON, R	FLPRO	0	0	0	1066	CONBK	3	3	0	1180	
NEUMANN, J	TELAB	2	1	2	1737#	SCHULMIN, R	WHEAT	2	1	0	1278#	TORGAMI, P	JCASE	2	2	1	1068#	CBOPE	0	0	0	1370*	
NEUMANN, J	MTRLA	0	0	0	0000?	SCHWARTZ, S	EXCAL	2	1	1	1870*												
NIECMZYK, M	WHEAT	0	0	0	1442	SEDLACK, E	EXECU	0	0	0	1786												
NINKOVIC, S	ZENTH	0	0	0	0000?	SHACHTER, J	INDNS	2	2	0	1524*												
NOVY, J	MTRLA	0	0	0	0000?	SHAFF, R	TYROS	2	1	1	1480C												
O'BRIEN, D	UOP	1	0	1	1409*	SHAW, R	INDNS	2	2	0	1524*												
O'DELL, DW	RADIO	1	3	1	1368	SHELBY, J	TYROS	0	0	0	0000?												
OGASAWARA, L	TYROS	1	1	0	1735	SHEU, B	PSTDF	0	0	0	0000?												
OGASAWARA, R	MTRLA	2	2	1	1525D	SHOBEY, S	DRGNS	0	1	1	0000?												
OROFIND, S	FNBK	0	0	0	0000?	SHOBEY, S	CONBK	2	3	1	1139#												
OSTERLUND, R	EXCAL	1	0	3	1862	SILVERBERG, A	FNBK	0	0	0	1426												
PAULME, N	AMOCO	1	0	0	1386	SKINNER, M	KEMPR	1	1	2	1973												
PARAQAAN, E	CONBK	1	3	2	1609	SKINNER, S	ZENTH	0	0	0	1179												
PARIKH, P	DRGNS	0	0	1	0000?	SKOMRONSKI, M	TELAB	2	2	1	1601*												
PARKER, L	TYROS	0	0	1	1740	SKULSKI, I	EXMPL	2	1	1	1647												

Three USCF Senior Masters are members of East Division teams: Jim Rizzitano and Calvin Blocker of the Chicago Board of Options Exchange and Morris Giles of Sears. Another Senior Master is Bob Gruchacz of CBOE, who played last season but not so far this year. Listed as active USCF Masters in the January 1988 Annual Rating List are Dave Levine of the Argonne Knights, Marc Bonoff of CBOE, and Peter Stein of Tellabs. This leaves CBOE with unquestionably the strongest team in the history of the CICL, provided all of the team members played at the same time in the team's matches.

C - CENTURY CLUB MEMBER  
D - DOUBLE CENTURIAN

# - UNRATED  
? - 5 TO 9 RATED GAMES  
\* - 10 TO 24 RATED GAMES





## 28-JAN-88 CHICAGO POST OFFICE

ROUND 2 BD	RATINGS SCORE	CHI BD OF OPTIONS EXCH	RATINGS SCORE	4
1 GREGORY, J	2088 -3	0	2578	3
2 INUMERABLE, F	2165 -4	0	2551	4
3 LESTER, M	1631-20	0	1674	20
4 COOPER, W	0 0	1	1476	0
5 HATCHER, W	0 0	1	1401	0
6 CARTER, L	0 0	1	0	0
			0	0
			0	0

## 12-JAN-88 WHEATON COLLEGE

ROUND 7 BD	RATINGS SCORE	4.5	AT&T TYROS	RATINGS SCORE	1.5
1 WALHOUI, P	1920	3	WHEATLEY, D	1952	-3
2 UNDERWOOD, W	1887	14	OGASAWARA, L	1750	-14
3 WALKER, R	1672	26	BROZOVICH, J	1731	-18
4 WALKER, P	1654	18	HARRINGER, R	1591	-12
5 AUGSBURGER, L	1486	-17	BLAZIE, J	1570	17
6 WIENS, P	1319	35	SMITH, BR	1544	-35
7 TAYLOR, F	0	0	CHOU, S	0	0
	0	0		0	0

## 15-JAN-88 BELL LABS INDIANS

ROUND 6 BD	RATINGS SCORE	3	ARGONNE ROOKS	RATINGS SCORE	3
1 LUDWIG, I	2007	-30	BERRY, G	1878	20
2 BLACKMOR, E	1581	32	DECMAN, S	1731	-21
3 CHURCHILL, W	1633	21	DUNWOODY, D	1607	-21
4 MATHUR, P	0	0	BINGLE, J	1494	0
5 HECKLEY, S	1274	-36	REDEY, E	1022	36
6 BELUNING, B	1329	0	WALSH, W	1464	0

## 16-DEC-87 UOP PROCESS DIV.

ROUND 4 BD	RATINGS SCORE	1	EXCALIBURS	RATINGS SCORE	5
1 STEVANOVIC, H	2076	-6	LEONG, G	1991	6
2 MICKLICH, F	1663	-8	BUERGER, E	1929	5
3 BRIONES, M	1547	-6	OSTERLUND, R	1857	6
4 GRAFF, R	1421	-5	SULLIVAN, J	1785	3
5 STUHLBARG, D	1412	16	ANDERSON, N	1710	-10
6 ABSIL, K	0	0	CHAN, H	1620	0
7 SHOREY, S	1097	42	BROTOSOS, J	1549	-28

## 01-JAN-88 EXEMPLARS

ROUND 5 BD	RATINGS SCORE	2	MOTOROLA	RATINGS SCORE	4
1 WONG, P	2074	-14	MCNEIL, B	2102	21
2 CREWSE, L	2013	-6	BLOOM, D	1932	6
3 KRAKAU, H	1902	0	CIESLEK, K	0	0
4 SCHULMAN, R	1875	4	OGASAWARA, R	1529	-4
5 SKULSKI, I	1647	0	FAHRENHOLTZ, S	1685	-1
6 SUERTH, F	1643	3	GONCHAROFF, N	1388	10
7 BURTAN, D	1541	-10	GRYPARIS, J	0	0
8 EDWARDS, S	1253	0	FRIDIRICH, C	0	0

## 17-JAN-87 FEL-PRU

ROUND 5 BD	RATINGS SCORE	2.5	KEMPER INSURANCE	RATINGS SCORE	3.5
1 ILANGA, R	1959	-23	SIWEK, M	1950	23
2 WEITZ, R	1709	-26	GARLAND, G	1648	26
3 CRUZ, R	1420	-12	HUGHES, N	1597	12
4 FELDMAN, A	1371	26	BLOEDOW, P	1419	-26
5 BAKER, B	1001	38	CUMMUTA, P	1284	-30
6 BAKTALONE, F	0	0	CAGNEY, D	0	0

## 01-JAN-88 TELLABS

ROUND 5 BD	RATINGS SCORE	4	AT&T TYROS	RATINGS SCORE	2
1 STEIN, P	2127	13	WHEATLEY, D	1965	-13
2 GRAFT, D	1696	26	BROZOVICH, J	1748	-17
3 NEUMANN, J	0	0	HARRINGER, R	1591	0
4 SKOWRONSKI, M	1577	24	BLAZIE, J	1594	-24
5 STELTON, N	1431	-21	SHAFF, R	1459	21
6 ERLENBORN, M	1363	0	BROWN, J	0	0

## 20-JAN-88 AT&amp;T TYROS

ROUND 6 BD	RATINGS SCORE	2.5	AMOCO RESEARCH LABS	RATINGS SCORE	3.5
1 WHEATLEY, D	1949	22	NAGLE, M	1939	-22
2 BROZOVICH, J	1713	-19	SAJKOWSKI, D	1630	28
3 HARRINGER, R	1579	-12	HOLM, B	1655	18
4 SHAFF, R	1480	0	THOMPSON, M	0	0
5 THOMAS, G	1373	0	BOOTH, D	1443	0
6 BLAZIE, J	1587	0	FINLAY, J	0	0

## 20-JAN-88 FENMILAB

ROUND 7 BD	RATINGS SCORE	3.5	BELL LABS INDIANS	RATINGS SCORE	2.5
1 MUTTA, H	2108	-9	LUDWIG, T	1977	9
2 SAGALOVSKY, L	1906	7	BLACKMON, E	1613	-7
3 KALIKER, C	1799	-31	CHURCHILL, W	1654	31
4 SPIEGEL, L	1796	8	SHACHTER, J	1532	-8
5 GAINES, I	1701	-28	HICKS, C	1276	41
6 SUMMERS, D	1378	0	MATHUR, P	0	0

## 07-JAN-88 AT&amp;T CHARGERS

ROUND 2 BD	RATINGS SCORE	4	ROCKWELL INT'L	RATINGS SCORE	2
1 WARREN, J	2040	16	JONES, B	2057	-24
2 MARCUMKA, R	1938	-33	SAMELSON, C	1754	33
3 KUMRO, D	1705	8	MCQUINN, J	1528	-12
4 RADAVICIUS, E	1577	13	RAFACZ, T	1532	-20
5 DOBR, K	1555	-20	EFRON, D	1424	31
6 STANN, V	1574	7	DEWITT, G	1383	-11

## 19-JAN-88 BELL LABS DRAGONS

ROUND 6 BD	RATINGS SCORE	3.5	J. I. CASE	RATINGS SCORE	2.5
1 ROSLEY, D	1693	14	WHITE, H	1558	-14
2 WARD, C	1646	6	KLINEFELTER, H	1417	-10
3 HARVEY, D	1400	-37	KID, P	1143	37
4 SHELDON, D	0	0	TODAWI, P	1060	0
5 MUNDZ, A	1271	-24	KANAS, W	1247	24
6 EUSTACE, D	1226	16	CARTER, D	1129	-16

21-JAN-88 AT&T CHARGERS  
ROUND 6 BD

1	RATINGS SCORE	ARGONNE KNIGHTS	5	RATINGS SCORE
1	2056 -6	LEVINE, D	1	2287 9
2	1713 -4	BOLDEN, D	1	2058 5
3	1535 -2	BENEDEK, R	1	2040 2
4	1590 -6	YOUNG, C	1	1841 6
5	1594-16	BAURAC, D	1	1581 23
6	1581 0	BUREA, K	0	1386 0

26-JAN-88 ARGONNE KNIGHTS  
ROUND 5 BD

1	RATINGS SCORE	J. I. CASE	1	RATINGS SCORE
1	2063 1	KLINEFELTER, H	1	1407 -1
2	2042 0	KANAS, W	0	1271 -1
3	1617 0	HALLMAN, W	0	1188 0
4	1604 4	REID, L	0	1180 -4
5	0 0 0	TOSAMI, P	1	1068 0
6	0 0 0		0	0 0

27-JAN-88 ROCKWELL INT'L  
ROUND 6 BD

1	RATINGS SCORE	A & B RADIO	4	RATINGS SCORE
1	1787 0	LASKY, N	0	1472 0
2	2033 2	HUMPF, R	0	1471 -2
3	1516-33	LASKY, J	1	1331 33
4	1455-27	MIKULECKY, B	1	1383 27
5	1372-24	O'DELL, DW	1	1344 24
6	0 0 0	WEISNER, T	1	1106 0

33-FEB-88 ARGONNE KNIGHTS  
ROUND 7 BD

1	RATINGS SCORE	BELL LABS DRAGONS	1-5	RATINGS SCORE
1	2296 2	STINSON, M	0	1781 -2
2	2064 5	ROSLEY, D	0	1707 -5
3	2042-12	WARD, C	.5	1652 12
4	1847 2	HAHNE, D	.5	1363 -3
5	1608 8	KELLY, S	0	1341 -8
6	0 0 0	EUSTACE, D	1	1242 0

35-JAN-88 AT&T SKOKIE  
ROUND 5 BD

1	RATINGS SCORE	EXCALIBURS	2-5	RATINGS SCORE
1	2063 10	BUEGER, E	0	1934-10
2	1881 -6	SULLIVAN, J	.5	1788 4
3	1855 0	OSTERLUND, R	.5	1863 -1
4	1870-11	ANDERSON, N	.5	1700 7
5	1784 22	KARLOVICS, S	0	1772-14
6	1269 -5	CHAN, H	1	1620 5

There has been a significant increase in the number of teams recording forfeits on upper boards. By incurring two or more such forfeits, the following four teams have lost the right to start the clock for an absent player, according to the CICL Rules of Play:

Amoco Research Labs A&B Radio  
Chicago Post Office J.I. Case

For the remainder of the season, if one or more of the players of these teams is not present by 15 minutes after the scheduled starting time for the match, the remaining players MUST shift boards upward, with forfeits taken at the BOTTOM of the lineup. Opposing team captains playing these teams should insist on this procedure, as mandated by the CICL rules.

The All-Star Match between the North and East Divisions went overwhelmingly to the East Division by the score 8.5 - 1.5. The strength of the East Division is apparent. A match between the East and Far West Divisions has now to be arranged. (If you are interested in participating, contact your Division Chairman.)