

Chicago Industrial Chess League



Bulletin 4 Volume 31
January 1988

NORTH DIVISION 12/31/87

TEAM NAME	W	L	D	GAME POINTS	MATCH POINTS	PCT
EXEMPLARS	3	0	0	11.5	3.0	1.000
AT&T SKOKIE	3	0	0	11.5	3.0	1.000
EXCALIBURS	2	0	0	7.5	2.0	1.000
MOTOROLA	1	3	0	11.0	1.0	0.250
FEL-PRO	0	1	2	7.5	1.0	0.333
KEMPER INSURANCE	0	3	1	8.5	0.5	0.125
UOP PROCESS DIV.	0	2	1	6.5	0.5	0.167

EAST DIVISION 12/31/87

TEAM NAME	W	L	D	GAME POINTS	MATCH POINTS	PCT
AMOCO CORP.	0	0	0	0.0	0.0	0.000
CHI BD OF OPTIONS EXCH	0	0	0	0.0	0.0	0.000
CHICAGO POST OFFICE	0					0.000
SEARS	0					0.000
CONTINENTAL BANK	0	0	0	0.0	0.0	0.000
ALUMNI CENTRAL	0	0	0	0.0	0.0	0.000

HELLO EAST DIVISION ??

NEAR WEST DIVISION 12/31/87

TEAM NAME	W	L	D	GAME POINTS	MATCH POINTS	PCT
ARGONNE KNIGHTS	4	0	0	20.0	4.0	1.000
ROCKWELL INT'L	3	1	0	16.0	3.0	0.750
AT&T CHARGERS	3	1	0	15.0	3.0	0.750
BELL LABS DRAGONS	2	3	0	13.0	2.0	0.400
A & B RADIO	0	4	1	8.0	0.5	0.100
J. I. CASE	0	3	1	5.0	0.5	0.125

FAR WEST DIVISION 12/31/87

TEAM NAME	W	L	D	GAME POINTS	MATCH POINTS	PCT
WHEATON COLLEGE	4	0	1	19.5	4.5	0.900
FERMILAB	3	1	1	16.5	3.5	0.700
AT&T TYROS	3	0	0	11.0	3.0	1.000
TELLABS	2	3	0	16.0	2.0	0.400
ARGONNE ROOKS	1	3	0	12.0	1.0	0.250
BELL LABS INDIANS	1	3	0	9.5	1.0	0.250
AMOCO RESEARCH LABS	0	4	0	5.5	0.0	0.000

U.S. CHESS
FEDERATION

&

Chess Association of CHICAGO

Proudly Announces

1988 National Open

MARCH 18-19-20 IN CHICAGO

Join the Grandmasters in Chicago



GM Robert Byrne



GM Dimitri Gurevich



U.S. Champ Joel Benjamin



GM Maxim Dlugy



GM Arthur Bisguier

Previous Winners
Joel Benjamin
Pal Benko
Arthur Bisguier
Walter Browne
Robert Byrne
Maxim Dlugy
Larry Evans
Dimitri Gurevich
Sergey Kudrin
Tony Miles
Samuel Reshevsky
James Tarjan

For the Chess Vacation of the Year.

\$16,000 PRIZE FUND

CHAMPIONSHIP SECTION - OPEN TO ALL

\$3500 - \$2000 - \$1000 - \$800 - \$700 - \$500

EXPERT: \$800 - \$400 - \$200

CLASS A: \$800 - \$400 - \$200

RESERVE SECTION - OPEN TO 1799 AND UNDER

\$1000 - \$500 - \$300 - \$200 - \$150

CLASS C: \$700 - \$350 - \$200

CLASS D-E: \$600 - \$300 - \$200

Join the Grandmasters in Chicago for an affordable 3 or 4 day Chess Vacation at the beautiful Holiday Inn O'Hare featuring 3 swimming pools and the magnificent HOLIDOME. See for yourself why the Holiday Inn O'Hare has become the most popular tournament site in the Chicago area. This prestigious USCF National Tournament is co-sponsored by USCF and the Chicago Chess Association. For additional information, see the Tournament section of CHESS LIFE, or write Organizer Richard Verber, 2725 W. 84th St., Chicago, IL 60652. The 1987 National Open in Las Vegas was one of the most successful tournaments of the year, attracting an amazing total of 948 players from throughout the U.S.! Since we expect to fill the Holiday Inn O'Hare from March 17 - 20, we urge you to make your hotel reservations early to assure yourself the discount chess rate. Please phone the hotel at 312-671-6350. Many special events are scheduled for Thursday evening, March 17 before the Friday afternoon start of the National Open. Don't miss the guest appearance and simul by U.S. Chess Champion Joel Benjamin and the fascinating \$500 BENJAMIN-DLUGY 3-game BLITZMATCH!

Don't miss this Exciting Tournament

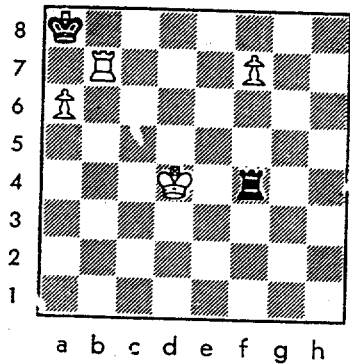
(Make your reservations early)

On the evening of December 2, ten Far West players competed against ten Near West players in the preliminary round of the All-Star Match. The Far West Division won the contest 6-4. Rated results can be found in this issue. Now the Far West awaits the outcome of the match between the East and North Divisions, scheduled for February 17, to be held in Oak Park. The Far West Division will play the winner sometime in March. Last year in the final round the North Division won on tie-break after playing to a 5-5 deadlock with the Far West.

02-DEC-87 NEAR WEST ALL STARS				4	FAR WEST ALL STARS				6
ROUND	BD		RATINGS	SCORE			RATINGS	SCORE	
(ROCKW)	1	JONES,B	2073	3	.5	STEIN,P	2118	-3	.5 (TELAB)
(EXECU)	2	MUSGRAVE,C	1894	-16	0	LUDWIG,T	1991	16	1 (INDNS)
(KNGHT)	3	YOUNG,C	1837	4	.5	WALHOUT,P	1939	-7	.5 (WHEAT)
(DRGNS)	4	STINSON,M	1794	-13	0	WHEATLEY,D	1952	13	1 (TYROS)
(ROCKW)	5	SAMELSON,C	1727	35	1	SAGALOVSKY,L	1953	-35	0 (FERMI)
(KNGHT)	6	HILL,B		0	0	UNDERWOOD,W	1875	0	1 (WHEAT)
(DRGNS)	7	ROSLEY,D	1686	-12	0	BERRY,G	1861	8	1 (ROOKS)
(ROCKW)	8	RAFACZ,T	1532	34	1	GAINES,I	1724	-23	0 (FERMI)
(ROCKW)	9	MCQUINN,J	1491	37	1	GRAFT,D	1745	-37	0 (TELAB)
(ROCKW)	10	DEWITT,G	1383	0	OF	MATHUR,P		0	0 1F (INDNS)

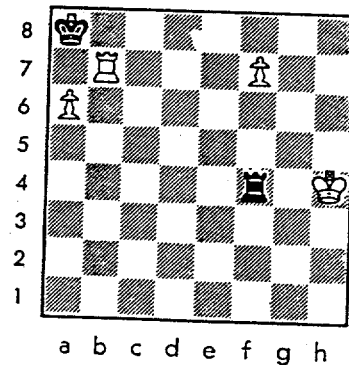
The following endgame studies are on a related theme:

The Black Rook can check at will because if White plays KxR Black is left in Stalemate. White must attempt to escape such checks. In each of these positions, determine if White to move wins or only draws. Solutions can be found elsewhere in this issue.



← Position 1

Position 2 →



More entries are published in the contest for 1) Best Sacrifice (or Attack) leading to victory, 2) Best Endgame Play leading to victory, 3) Best Salvage of a Draw (or Win) when behind, 4) Best Upset Victory, and 5) Best Overall Game. Awards are \$10 gift certificates purchased by the CIGL towards merchandise from the APCT. Continue to mail in your entries! So far the entries are all coming from the Far West Division. Anyone else interested in the contest? Mail to Wes Underwood, Department of Chemistry, Wheaton College, Wheaton IL 60187.

Entry #5 Best Salvage of a Draw when Behind

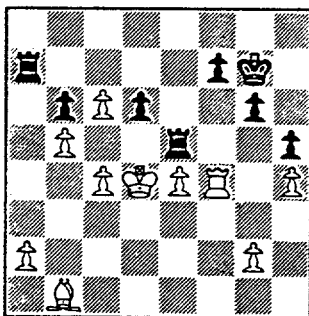
Does not qualify for a prize.

White: C. Kaliher (FERMI 1834) Black: W. Underwood (WHEAT 1880)
November 10, 1987
Fermilabs vs. Wheaton College (Board 2)

1. e4 d6 2. d4 Nf6 3. Bd3 e5 4. f4 Nc6 (It is not clear whether Black can hang on to the extra pawn by accepting the sacrifice with 4...exd4.) 5. Nf3 Bg4 6. c3 Be7?! (Here 6...exd4 would be better. The move played allows Black no breathing room.) 7. d5 Nb8 8. h3 Bxf3 9. Qxf3 exf4 10. Bxf4 Nbd7 11. O-O O-O 12. c4 Re8 13. Nc3 Bf8 14. Rae1 Ne5 15. Bxe5 Rxe5 (It will be difficult for White to attack the Rook on e5. Thus Black has a chance to try and reorganize.) 16. Nd1 Qe7 17. Ne3 Rae8 18. Nf5 Qd8 19. b3 Be7 20. Bb1 g6?? (Drops a piece. Black is completely paralyzed.) 21. Nxe7+ Qxe7 22. Qxf6 Qxf6 23. Rxf6 b6 (A position like this is hardly worth playing out for Black. However, why not just keep playing on to see what happens? Counterplay, errors by an opponent, etc. cannot develop if one resigns.) 24. Ref1 R8e7 25. Kf2 Kg7 26. Ke3 h5 27. R1f4 Rg5 28. Kf3 Rge5 29. h4 Kg8 (At this point, Black begins a maneuver to pass time, waiting for White to find a plan.) 30. b4 Kg7 31. b5 Kg8 32. Ke3 Kg7 33. Kd4 (This turns out to be a terrible spot for the White King.) Kg8 34. Rf3 Kg7 35. R6f4 Kg8 36. Ra3 (Could White be overlooking Black's best hope?) Kg7 37. Rxa7?? (An error undoubtedly "encouraged" by Black's carefree King shuttling during moves 29-36. White simply became careless.) c5+!
38. dxc6 Rxa7

Even in this position, Black will have to play very carefully to save the draw. White's pawns contain a lot of threats. But this opportunity would not have arisen if White had resigned after move 23. Black's Q-side pawns are weak, and White's King is very strong.

Position after 38....Rxa7



39. Rf2 Kf8 40. Kc3 Ke7 41. Kb4 f6 42. a4 g5 43. g3 Ra8
44. Bd3 Ke6 45. Ra2 Ra5 46. Kc3 Ke7 47. Kd4 Kf7 (This position is very complicated. Perhaps both players were more concerned about "not losing" than about winning.) 48. c7?! Rc5 49. hxg5 fxg5
50. Rf2+ Ke6 DRAW (White may still have an edge. 51. Rf5 Rxc7 52. Rxc7 Rh7 53. Rg6+ Kd7 54. Kd5 +-)

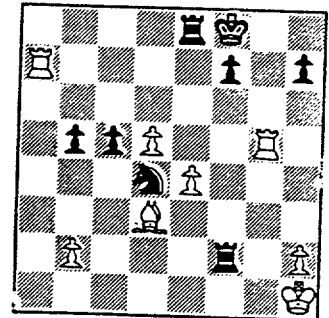
Engame position 1:
1. Ke5 Rf5+ (1...Re4?? 2. Kf6 Re6+ 3. Kf7 +- The Black Rook must not under any circumstances allow the White King to get to the f or g file. See related position #2.) 2. Ke6 Rf6+ 3. Ke7 Rxf7+ =. Or, 1. Kc3 Rf3+ 2. Kd4 Rf4+ 3. Ka5 Rf5+ 4. Rb5 Rxf7 =. This position is DRAWN.
Engame position 2:
1. Kg5 Rf5+ 2. Kg6 Rf6+ 3. Kg7 Rg6+ 4. Kf8 Rg8+ 5. Ke7! (5. fxg8=Q?? =) Re3+ 6. fxe8=Q mate. White WINS by using the f-pawn.

Entry #6 Best Endgame Play Leading to Victory

White: D. Graft (TELAB 1717) Black: L. Sagalovsky (FERMI 1912)
September 29, 1987
Telabs vs. Fermilabs (Board 2)

1. d4 Nf6 2. Nf3 g6 3. Nbd2 Bg7 4. e4 d6 5. Bd3 O-O 6. O-O Nbd7 7. Re1 e5 8. c3 exd4 9. cxd4 Nh5 10. Nf1 c5 11. d5 a6 12. a4 Rb8 13. Qe2 Ne5 14. Nxe5 Bxe5 (White should play for an e5 break but because of awkward position of his Knight on f1 and Rook on e1 he cannot play f4 right away.) 15. g3 Bd7 16. f4 Bg7 17. f5? (After this move White's King Bishop is out of the game, his Pawn on e4 is weak and there is weakness on the dark squares. The position called for 17. e5.) b5 18. g4 Bd4+ 19. Kh1 Ng7 20. axb5 axb5 21. Bf4 gxf5 22. gxf5 Re8 23. Ne3 Qh4 24. Bxd6 (This allows Black to bring the Queen's Rook into the action 24. Qg4 is much better.) Rb6 25. Bg3 Qg5 26. Ra7?! (A waste of time. White should defend the Pawn on f5 by playing 26. Qf3.) Bxf5 27. Nxf5 Nxf5 28. Bf2! (Black threatened Nxc3 and Rh6+.) Rg6 (If White hadn't played 26. Ra7 he could play 29. Rg1 now.) 29. Bxd4 Nxd4 30. Qf2 Rf6 31. Rg1 Rxf2 32. Rxc5+ Kf8

Position after 32....Kf8



33. Rh5? (This move loses. 33. Rg2 holds although Black has slight advantage because of active Knight vs. passive Bishop.) c4! (Bishop has but one retreat! This is the long term result of having played 17. f5 instead of 17. e5 earlier.) 34. Kg1 Rf6! (This move wins whereas Rf4 only draws.) 35. Bb1 Ne2+ 36. Kh1 (not 36. Kg2 Nf4+) Rg6! (Mate threat cannot be met. If 37. h4 then 37...Ng3+.

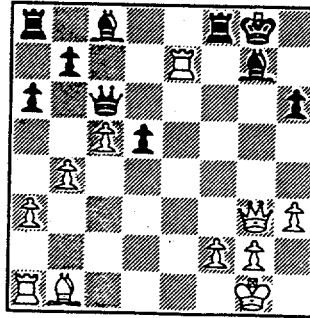
At this point the game is virtually over.) 37. Rxf7+ Kxf7 38. Rf5+ Kg7 39. Rf1 Rf8 40. Re1 Rf2 41. e5 Rgg2 42. Resigns.

Entry #7 Best Overall Game

White: P. Mathur (INDNS -UNR) Black: J. Bingle (ROOKS 1494)
January 13, 1988
Bell Labs Indians vs. Argonne Rooks

1. P-Q4 P-QB4 2. P-K3 (Perhaps 2. PxP or 2. P-Q5 would be preferred.) PxP 3. PxP N-KB3 4. N-KB3 P-KR3 5. B-Q3 P-K3 6. B-Q2 P-QR3 7. P-QB4 (White initiates Queen-side play.) N-QB3 8. P-QR3 Q-QN3 (Threatening two Pawns, but actually aids White's development.) 9. B-QB3 B-K2 10. P-QB5 Q-B2 (At this point BOTH pawn structures seem awkward.) 11. O-O P-Q4 (Offering en passant capture...) 12. R-K1 (...but refused.) O-O 13. QN-Q2 N-KN5 (Black tries to free his Bishop; perhaps 13...N-KR2 14. Q-B2 N-N4 15. NxN BxN 16. B-R7+ K-R1.) 14. P-KR3 N-B3 15. P-QN4 N-KR4 (Another attempt.) 16. N-K5! N-KB5! 17. B-N1 NxN 18. PxN (Giving Black a protected passed pawn, but

18. RxN?! looks no better.) Q=B3 (Threatening 19...P=Q5!) 19. B=Q4 N-KN3
 20. Q-KN4 (White shifts attention to the Kingside.) B-KN4 21. N-KB3
 P=KB4?! (An attempt to trap the White Queen.) 22. PxP e.p. (This time
 accepting the offer was probably not as good as 22. Q=N3! P-B5 23. Q=N4
 threatening 24. P-KR4 [winning a piece] and 24. NxB PxN 25. QxP [winning a
 Pawn].) P-K4! 23. NxB! NxN 24. Q-K2 PxP (Black gains a piece but has an
 exposed King.) 25. BxN PxB 26. QxP B=KB3! 27. Q=N3+ B-N2 28. R-K7? (Going
 in for the attack. Better
 would be to first free the
 other Rook.) Q=KB3! 29.
 R=QB7 QxR 30. Q=N6
 (Threatening checkmate?)
 B-B4!! (Nope. White is
 forced to resign with this
 the only move to save the
 game. 30...R-B4 31. RxB+
 RxR 32. QxR probably also
 holds, but not so nicely.)
 [0-1]

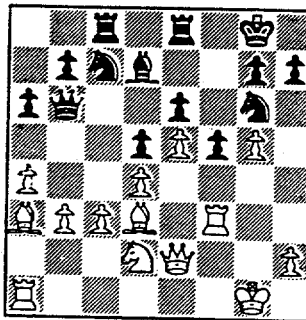


Position
 after
 28....R-K7?

Entry #8 Best Sacrifice / Attack Leading to Victory

White: B. Holm (AMOCO 1675) Black: B. Harringer (TYROS 1610)
 January 20, 1988
 Amoco vs. AT&T Tyros

1. P-Q4 P-K3 2. P-K3 N-KB3 3. B-Q3 P-QB4 4. P-QB3 BPxP 5. KPxP P-Q4 6. N-Q2
 N=QB3 7. P=KB4 (The DUTCH in REVERSE or the STONEWALL ATTACK) B-Q3 8. P-KN3
 N-K2 (Perhaps 8...N-Q2 would be preferred.) 9. N/1-B3 B-Q2 10. N-K5 N-N3
 11. O=O Q=N3 (Black begins to remove defense from the Kingside.) 12. Q-K2
 O=O 13. P=KN4 (The beginning of a successful Kingside attack. White's
 pieces are very active -- open lines for Bishop, Queen, and Rook, and a
 very strong Knight.) BxN (This exchange doesn't relieve any pressure.) 14.
 BPxB N=K1 (Now Black suffers from uncoordinated pieces and little Kingside
 defense.) 15. P-N5 P=B4
 16. R=B3 N=QB2 (The Black
 Queen is cut off.) 17.
 P=QR4 (Trying to trap the
 Black Queen.) P-QR3 18.
 P-QN3 QR-B1 19. B-R3 KR-K1
 20. R-R3! (A neat
 sacrifice that eliminates
 the last Black Kingside
 defender.) N-B5 21. Q-B3
 NxR 22. QxN Q-B3 (Black
 should give back the
 exchange with 22...R-B1
 23. BxR RxB followed by 24...B-K1, before it is too late.) 23. B-K2 P-QN4
 (Black is ignoring a very strong attack. But does he even have an adequate
 defense?) 24. B-R5 P-N3 25. BxP! (White has complete control and therefore
 complete freedom to sacrifice more material.) PxB 26. Q=R6 QxP 27. QxP+
 K-R1 28. Q-R6+ K-N1 29. P-N6 (Now threatening mate in two. Black is
 defenseless.) QxR+ (White can now afford to give away most of his forces!)
 30. K-N2 QxB (White is now down 2 Rooks and a Bishop! But no matter... 31.
 Q-R7+ K-B1 32. Q-B7 mate.



Position
 after
 19....KR-K1

NAME	TEAM	W	L	D	RATING	NAME	TEAM	W	L	D	RATING
AFSHARI, A	DRGNS	0	0	0	0000?	CHARKOVSKY, R	FNBK	0	0	0	1642#
AGPAWA, T	ZENTH	0	0	0	1581	CHERNOMORDIKOW	SEARS	0	0	0	1694*
ALEXANDER, M	FNBK	0	0	0	0000?	CHEVERESAN, S	UDF	1	2	0	1449
ANDERSON, MARK	ATTSK	0	1	0	1269#	CHOU, S	WHEAT	1	0	0	0000?
ANDERSON, N	EXCAL	2	0	0	1710C	CHRISTIAN, R	ATTSK	3	0	0	1870
ANDRESEN, T	EXCAL	0	0	0	1785C	CHURCHILL, W	INDNS	1	3	0	1633
ANGLIN, B	SEARS	0	0	0	1560*	CIBA, F	SEARS	0	0	0	1369
ANTHONY, M	FNBK	0	0	0	1858#	CIESLEK, D	MTRLA	2	0	0	0000?
ASHBROOK, R	FLPRO	0	0	0	853*	CIFOLLA, J	MTRLA	1	2	0	1614*
ATKINSON, J	AMCRP	0	0	0	1622	CIFOLLA, M	MTRLA	0	0	0	0000?
AUGSBURGER, L	WHEAT	1	1	1	1475#	CLAY, M	FLPRO	0	1	0	0000?
BAKER, B	FLPRO	0	1	1	1001	COCKER, D	CONBK	0	0	0	0000?
BALL, J	CONBK	0	0	0	0000?	COLLINS, P	MTRLA	0	0	0	0000?
BARRETT, P	AMCRP	0	0	0	0000?	COLTER, D	JCASE	0	0	0	0000?
BARTON, J	WHEAT	0	0	0	1405#	CONWAY, F	ZENTH	0	0	0	1323
BARVISH, A	ZENTH	0	0	0	1691	COOPER, K	MTRLA	1	0	0	0000?
BAURAC, D	KNGHT	2	1	0	1581C	CORBIN, Z	AMCRP	0	0	0	0000?
BECKLEY, S	INDNS	0	3	0	1274#	COURTNEY, J	CONBK	0	0	0	0000?
BENEDEK, R	KNGHT	2	0	1	2040C	COX, M	ALUMN	0	0	0	1920
BERNY, K	CBOPE	0	0	0	0000?	CREWSE, L	EXMPL	3	0	0	2013
BERRY, G	ROOKS	1	0	4	1878D	CRUZ, R	FLPRO	1	1	1	1420*
BEUNING, B	INDNS	0	1	1	1329*	CUMMUTA, P	KEMPR	0	0	1	1284
BILLINGSLEY, T	FNBK	0	0	0	0000?	CUSTER, M	ROCKW	0	0	0	0000?
BINGLE, J	ROOKS	1	1	1	1494C	CZERNIECKI, A	ALUMN	0	0	0	2179C
BLACKMON, E	INDNS	0	1	3	1581*	DACUMA, J	FNBK	0	0	0	1282*
BLAZIE, J	TYROS	2	0	0	1594	DAVIDOFF, G	KNGHT	0	0	0	0000?
BLOEDOW, P	KEMPR	1	2	1	1419	DAWSON, J	KNGHT	0	0	0	1473
BLOOM, B	MTRLA	0	0	1	1932	DAWSON, T	ROCKW	0	0	0	1105*
BLOOMFIELD, R	ATTSK	0	0	0	0000?	DECMAN, S	ROOKS	1	1	2	1731C
BOLDEN, D	KNGHT	3	0	0	2058	DEGROAT, R	CBOPE	0	0	0	0000?
BOOTH, D	AMCCO	0	0	0	1443	DELANEY, B	AMCRP	0	0	0	0000?
BORUM, J	DRGNS	1	0	0	0000?	DENMARK, T	SEARS	0	0	0	0000?
BRANDT, W	DRGNS	0	0	0	1374*	DEWITT, G	ROCKW	1	1	1	1383
BRIONES, M	UDF	0	2	1	1547	DEZONNO, T	ROCKW	0	0	0	0000?
BRONFELD, A	CBOPE	0	0	0	1660	DITTMER, T	WHEAT	0	0	0	0000?
BROTSOS, J	EXCAL	2	0	0	1549C	DIXON, R	CBOPE	0	0	0	1600
BROWN, J	TYROS	0	0	0	0000?	DOBR, K	CHRGR	1	1	0	1555D
BROZOVICH, J	TYROS	2	0	1	1748C	DOUGHTY, J	WHEAT	0	0	0	0000?
BUCHANAN, R	FNBK	0	0	0	1449C	DUKES, D	SEARS	0	0	0	1390#
BUERGER, E	EXCAL	0	1	1	1929C	DUNWOODY, D	ROOKS	1	1	0	1607
BURBA, K	KNGHT	1	1	0	1386C	DURKEE, D	ATTSK	1	0	0	1784
BURIAN, D	EXMPL	1	0	2	1541	EASLEY, K	INDNS	0	1	0	1688*
BURK, R	ALUMN	0	0	0	1550C	EDWARDS, S	EXMPL	0	0	0	1253
CAGNEY, D	KEMPR	0	0	0	0000?	EFRON, D	ROCKW	2	0	0	1424#
CAMPBELL, C	AMCRP	0	0	0	1175	ERLENBORN, M	TELAB	3	2	0	1363#
CARPENTER, F	ATTSK	0	2	1	1439	EUSTACE, D	DRGNS	1	3	0	1226#
CARTER, D	JCASE	0	0	1	1120*	FABIJONAS, R	ALUMN	0	0	0	1693D
CARTER, R	EXECU	0	0	0	1564#	FAHRENHOLTZ, S	MTRLA	0	1	0	0000?
CAUGHRAN, J	INDNS	0	0	0	0000?	FAJKUS, J	CHRGR	0	0	0	1594C
CHAN, H	EXCAL	1	0	0	1620	FARRELL, D	WHEAT	0	0	0	1232#

? - UNRATED

- 5 TO 9 RATED GAMES

* - 10 TO 24 RATED GAMES

C - CENTURY CLUB MEMBER

D - DOUBLE CENTURION

NAME	TEAM	W	L	D	RATING	NAME	TEAM	W	L	D	RATING
FELDMAN, A	FLPRO	0	2	1	1371	JOHNSON, M	MTRLA	0	0	0	1024#
FINLAY, J	AMOCO	0	2	0	0000?	JONES, B	ROCKW	1	1	2	2057*
FISCHLER, M	FERMI	0	1	0	1352	JONES, J	CBOPE	0	0	0	0000?
FOGARTY, D	EXMPL	0	0	0	1589*	JORGENSEN, B	ROOKS	0	0	0	1767*
FOGERTY, A	CBOPE	0	0	0	1795#	JOSEPHSON, D	WHEAT	0	0	0	0000?
FONNEMAN, J	AMOCO	0	1	0	0000?	KALIHHER, C	FERMI	2	1	2	1799
FRANEK, M	ALUMN	0	0	0	1726	KANAS, W	JCASE	0	4	0	1247
FRIDIRICH, C	MTRLA	1	1	0	0000?	KARGE, W	KEMPR	0	2	0	1284
GAINES, I	FERMI	1	2	2	1701C	KARLOVICS, S	EXCAL	0	2	0	1772C
GAPASIN, C	CONBK	0	0	0	0000?	KEIL, C	WHEAT	0	0	0	0000?
GARESCHÉ, P	EXECU	0	0	0	1475*	KELLOGG, K	KNIGHT	1	0	0	1617C
GARLAND, G	KEMPR	1	3	0	1648	KELLY, S	DRGNS	1	3	0	1341*
GAVIN, L	CBOPE	0	0	0	1152#	KHOKHA, D	MTRLA	0	1	0	0000?
GERNES, L	ATTSK	0	1	0	1494	KINSELLA, G	KNIGHT	0	0	0	1436C
GHULAM, S	ZENTH	0	0	0	0000?	KLINEFELTER, H	JCASE	2	3	0	1417*
GOLLA, R	SEARS	0	0	0	1823C	KOGAN, G	CONBK	0	0	0	1735*
GONCHAROFF, N	MTRLA	0	2	2	1685D	KOMOROUSKI, R	WHEAT	0	0	0	0000?
GOY, R	CONBK	0	0	0	0000?	KRAKAU, H	EXMPL	1	1	0	1902
GOYETTE, R	CBOPE	0	0	0	1190#	KRAS, T	ALUMN	0	0	0	2171
GRAFF, R	UOP	1	0	1	1421*	KRAUSE, J	FNBK	0	0	0	0000?
GRAFT, D	TELAB	2	3	1	1696	KROEKER, K	WHEAT	0	0	0	0000?
GREEN, D	ROOKS	2	0	1	1658C	KULINER, M	FNBK	0	0	0	0000?
GREENSPAN, P	MTRLA	0	2	0	1564C	KUMICICH, M	CBOPE	0	0	0	0000?
GRIVETTI, M	AMOCO	0	0	0	0000?	KUMRO, D	CHRGR	2	0	1	1705D
BROGAN, J	WHEAT	0	0	0	0000?	LAHAM, N	AMCRP	0	0	0	0000?
BRUCHACZ, R	CBOPE	0	0	0	2485	LANDRY, H	CBOPE	0	0	0	0000?
GRYPARIS, J	MTRLA	1	2	1	1388*	LANNOYE, D	SEARS	0	0	0	1410*
HAAG, F	CBOPE	0	0	0	0000?	LASKY, J	RADIO	1	3	0	1331*
HAHNE, D	DRGNS	2	1	0	1400*	LASKY, JIM	RADIO	1	0	0	0000?
HALL, M	WHEAT	0	0	0	1056#	LASKY, N	RADIO	0	0	5	1472
HALLMAN, W	JCASE	1	0	0	1188*	LATIMER, E	SEARS	0	0	0	1951C
HANLEY, M	JCASE	0	0	0	1247#	LEMS, W	SEARS	0	0	0	1487C
HARRINGER, R	TYROS	0	2	0	1591C	LEONG, D	ALUMN	0	0	0	1838*
HARRISON, T	WHEAT	0	0	0	1207*	LEONG, G	EXCAL	0	0	0	1991
HEALY, S	EXECU	0	0	0	1321*	LEVINE, D	KNIGHT	3	0	0	2287
HEILKER, C	ROCKW	0	0	0	0000?	LEWIS, L	ZENTH	0	0	0	0000?
HESS, B	FLPRO	0	0	0	1527*	LITVINAS, A	ALUMN	0	0	0	1651C
HICKS, C	INDNS	1	0	0	1276*	LONOFF, M	CBOPE	0	0	0	2333
HILL, B	KNIGHT	0	1	0	0000?	LUDWIG, T	INDNS	3	1	1	2007
HIRSCHFIELD, G	EXECU	0	0	0	0000?	MALMGREN, M	AMCRP	0	0	0	0000?
HODGES, H	FERMI	0	0	0	1515#	MANASTER, R	ATTSK	2	0	0	1881
HOLM, B	AMOCO	1	2	0	1655	MANZKE, R	ATTSK	0	0	0	1145*
HOPSON, A	CONBK	0	0	0	0000?	MARCOWKA, R	CHRGR	1	0	0	1938C
HUGHES, N	KEMPR	1	3	0	1597	MARTIN, W	CONBK	0	0	0	0000?
HUMPF, R	RADIO	0	4	0	1471#	MARTINSONS, B	MTRLA	1	2	0	1839
HUTTAR, C	FNBK	0	0	0	2020	MATHUR, F	INDNS	0	0	0	0000?
ILANGA, R	FLPRO	1	1	0	1959#	MCCALLON, J	WHEAT	0	1	0	1135#
JACOBS, N	ATTSK	1	0	2	1855C	MCCLENDON, L	CONBK	0	0	0	1346
JANNEY, C	SEARS	0	0	0	0000?	MCDUGALL, A	KEMPR	0	0	0	0000?
JENKS, B	ROOKS	0	0	0	0000?	MCHARG, C	DRGNS	0	0	0	1289*

? - UNRATED
 # - 5 TO 9 RATED GAMES
 * - 10 TO 24 RATED GAMES

C - CENTURY CLUB MEMBER
 D - DOUBLE CENTURION

NAME	TEAM	W	L	D	RATING	NAME	TEAM	W	L	D	RATING
MCKEE, M	TELAB	1	1	0	0000?	REYES, R	SEARS	0	0	0	2200C
MCKENZIE, J	WHEAT	0	0	0	1387#	RIBOT, A	CBOFE	0	0	0	0000?
MCNEIL, B	MTRLA	3	0	1	2102	RINGENBERG, T	AMOCO	0	1	0	1314*
MCQUINN, J	ROCKW	4	0	0	1528	ROMAN, J	ROCKW	1	0	0	0000?
MICKLICH, F	UOP	0	2	1	1663	ROHING, G	CBOFE	0	0	0	1388#
MIHAILOVICH, S	ROOKS	0	1	0	1764D	ROSLEY, D	DRGNS	1	2	1	1693
MIKULECKY, B	RADIO	1	3	1	1383	RZESZUTKO, R	ALUMN	0	0	0	1831
MITCHELL, T	CBOFE	0	0	0	1435#	SABADOS, P	AMOCO	0	0	0	1002*
MONZANI, A	FLPRO	0	0	0	1670	SAGALOVSKY, L	FERMI	4	1	1	1906
MOODY, L	CONBK	0	0	0	0000?	SAJKOWSKI, D	AMOCO	1	1	1	1641#
MOORE, D	EXECU	0	0	0	1308	SALA, S	FERMI	0	0	0	0000?
MOTTA, H	FERMI	1	2	1	2108*	SALKAUSKAS, A	FNBANK	0	0	0	1805
MUELDER, R	FNBANK	0	0	0	1450#	SAMELSON, C	ROCKW	2	1	1	1754
MUIR, L	AMOCO	0	1	0	1521C	SAPITRO, J	FNBANK	0	0	0	1542
MUNOZ, A	DRGNS	1	1	0	1271	SATTERLEE, D	JCASE	0	0	0	1585
MUSGRAVE, C	EXECU	0	1	0	1878	SAWDO, E	JCASE	0	0	0	1447
MYERS, W	CONBK	0	0	0	1528*	SCHOONVELD, S	WHEAT	2	1	0	1278#
NAGLE, M	AMOCO	1	2	1	1939	SCHULMAN, R	EXMPL	1	0	1	1875C
NEUMANN, J	TELAB	1	1	2	0000?	SCHWARTZ, S	SEARS	0	0	0	1636C
NEUMARK, J	MTRLA	0	0	0	1740D	SEDLACK, E	EXECU	0	0	0	1786
NIEMCZYK, M	WHEAT	0	0	0	0000?	SHACHTER, J	INDNS	2	1	0	1532*
NINKOVIC, S	ZENTH	0	0	0	1442	SHAFF, R	TYROS	1	1	0	1459C
NOVY, J	MTRLA	0	0	0	0000?	SHEU, G	DRGNS	0	1	0	0000?
O'BRIEN, D	UOP	1	0	1	1409*	SHOREY, S	UOP	0	0	0	1097#
O'DELL, DW	RADIO	0	3	1	1344	SIEGEL, R	CONBK	0	0	0	1455
OGASAWARA, L	TYROS	1	0	0	1750	SILVERBERG, A	FNBANK	0	0	0	1897
OGASAWARA, R	MTRLA	2	1	1	1529D	SIWEK, M	KEMPR	0	1	2	1950
OROFINO, S	FNBANK	0	0	0	0000?	SKINNER, S	ZENTH	0	0	0	1179
OSTERLUND, R	EXCAL	0	0	2	1857	SKOWRONSKI, M	TELAB	1	2	1	1577*
PAAUWE, N	AMOCO	1	0	0	1386	SKULSKI, I	EXMPL	2	0	1	1647
PARAOAN, E	CONBK	0	0	0	1598	SMITH, BR	TYROS	1	0	0	1544
PARIKH, F	DRGNS	0	0	1	0000?	SMITH, M	FNBANK	0	0	0	1550
PARKER, L	TYROS	0	0	1	1740	SOLBERG, R	CONBK	0	0	0	0000?
PARKER, M	ROCKW	0	0	0	0000?	SOLEYMANI, S	ROCKW	0	0	0	0000?
FATEL, R	CONBK	0	0	0	0000?	SOLNER, J	DRGNS	0	1	0	1662*
PEPPERS, G	MTRLA	1	0	0	0000?	SOMBONG, M	CONBK	0	0	0	1763
PETERS, M	ROCKW	0	0	0	0000?	SOPRYCH, T	AMCRP	0	0	0	1517
PETERS, S.	CONBK	0	0	0	0000?	SPANGLER, M	AMOCO	0	3	1	1361
PETERSON, B	CONBK	0	0	0	0000?	SPIEGEL, L	FERMI	4	1	0	1796
PETERSON, P	EXMPL	0	0	0	0000?	STAMM, V	CHRGR	1	0	0	1574C
PODGORNIK, P	ROCKW	0	0	0	0000?	STEIN, P	TELAB	4	1	1	2127
POKATILOFF, W	FLPRO	0	0	0	1326	STELTON, N	TELAB	1	0	2	1431
POPPS, W	ROCKW	0	0	0	1589	STEVANOVIC, M	UOP	1	1	0	2076
PROKSCH, R	ROOKS	0	0	0	0000?	STINSON, M	DRGNS	1	3	0	1781
RADAVICIUS, E	CHRGR	1	0	1	1577C	STOLTZ, B	TYROS	1	1	1	1808
RAFACZ, T	ROCKW	1	2	1	1532	STRAUBE, D	WHEAT	0	0	0	1296*
RAHMANIAN, S	ROCKW	0	0	0	0000?	STREETS, D	ROOKS	0	2	1	2027C
REDD, S	FNBANK	0	0	0	0000?	STUHLBARG, D	UOP	1	1	0	1412
REDEY, E	ROOKS	0	0	0	1022*	SUCH, A	DRGNS	0	0	0	1476
REID, C	JCASE	0	4	0	1143#	SUE, H	ATTSK	0	0	0	1410

? - UNRATED
- 5 TO 9 RATED GAMES
* - 10 TO 24 RATED GAMES

C - CENTURY CLUB MEMBER
D - DOUBLE CENTURION

NAME	TEAM	W	L	D	RATING	NAME	TEAM	W	L	D	RATING
SUERTH, F	EXMPL	2	1	0	1643	WALKER, R	FERMI	0	2	1	1369C
SULLIVAN, J	EXCAL	2	0	0	1785C	WALLIN, R	WHEAT	3	2	0	1672#
SUMMERS, D	FERMI	0	1	2	1378#	WARD, C	DRGNS	1	1	2	1646C
SWANSON, V	EXECU	0	0	0	1667	WARREN, J	CHRGR	3	0	0	2040D
SWIDERSKI, M	CHRGR	0	0	0	1360C	WEBSTER, D	INDNS	0	0	0	1842
TASKER, I	ROOKS	1	0	1	1424#	WEIGAND, J	ZENTH	0	0	0	1284
TAYLOR, F	WHEAT	1	2	0	0000?	WEIHMILLER, W	AMCRP	0	0	0	2039
TAYLOR, J	FLPRO	0	0	0	0000?	WEISNER, T	RADIO	0	3	1	1186
TEGEL, F	ATTSK	2	0	2	2063D	WEITZ, R	FLPRO	3	0	0	1709#
TENNIE, E	TELAB	0	1	0	0000?	WENTLING, C	AMCRP	0	0	0	1521#
THOMAS, G	TYROS	0	0	0	1373	WHEATLEY, D	TYROS	2	1	1	1965#
THOMAS, J	CHRGR	3	0	0	1531C	WHITE, H	JCASE	1	0	1	1558
THOMPSON, M	AMOCO	0	2	0	0000?	WIENCEK, T	ROOKS	1	1	0	1229*
THOMPSON, R	FLPRO	0	0	0	1060	WIENS, P	WHEAT	4	0	1	1319
TOGAMI, P	JCASE	1	2	0	1068#	WILLS, B	WHEAT	0	1	0	0000?
TURPIN, S	INDNS	0	0	0	0000?	WILSON, A	FNBK	0	0	0	1532
ULMISHEK, G	ROOKS	0	0	0	1282#	WINGRAD, Y	INDNS	0	0	0	0000?
UNDERWOOD, W	WHEAT	3	0	2	1887	WIRTSCHAFTER, D	ALUMN	0	0	0	1989
UNRUH, J	DRGNS	0	0	0	1174	WONG, P	EXMPL	0	2	0	2074C
VAN DER BIJ, J	FERMI	0	0	0	1779*	WROBEL, J	AMOCO	0	0	0	1654
VAN MEER, J	KEMPR	0	0	1	1808	YOUNG, C	KNIGHT	1	0	2	1841C
VICK, H	MTRLA	0	2	0	1477	YOUNG, D	ROOKS	0	1	0	0000?
WAGNER, R	ATTSK	0	0	0	1724	ZAROMB, S	ROOKS	0	0	0	1461*
WAGNER, RA	MTRLA	0	0	0	1517*	ZOELLNER, J	CONBK	0	0	0	1185*
WALHOUT, P	WHEAT	1	2	3	1920	ZYLES, J	CBOPE	0	0	0	1370*
WALKER, P	WHEAT	3	1	1	1654*						

NORTH DIVISION TOP TEN

MCNEIL, B	MTRLA	2102
STEVANOVIC, M	UOP	2076
WONG, P	EXMPL	2074C
TEGEL, F	ATTSK	2063D
CREWSE, L	EXMPL	2013
LEONG, G	EXCAL	1991
SIWEK, M	KEMPR	1950
BLOOM, B	MTRLA	1932
BUERGER, E	EXCAL	1929C
KRAKAU, H	EXMPL	1902

NEAR WEST DIVISION TOP TEN

LEVINE, D	KNIGHT	2287
BOLDEN, D	KNIGHT	2058
JONES, B	ROCKW	2057*
WARREN, J	CHRGR	2040D
BENEDEK, R	KNIGHT	2040C
MARCOWKA, R	CHRGR	1938C
YOUNG, C	KNIGHT	1841C
STINSON, M	DRGNS	1781
SAMELSON, C	ROCKW	1754
KUMRO, D	CHRGR	1705D

EAST DIVISION TOP TEN

GRUCHACZ, R	CBOPE	2485
LONOFF, M	CBOPE	2333
REYES, R	SEARS	2200C
CZERNIECKI, A	ALUMN	2179C
KRAS, T	ALUMN	2171
WEIHMILLER, W	AMCRP	2039
HUTTAR, C	FNBK	2020
WIRTSCHAFTER, D	ALUMN	1989
LATIMER, E	SEARS	1951C
COX, M	ALUMN	1920

FAR WEST DIVISION TOP TEN

STEIN, P	TELAB	2127
MOTTA, H	FERMI	2108*
STREETS, D	ROOKS	2027C
LUDWIG, T	INDNS	2007
WHEATLEY, D	TYROS	1965
NAGLE, M	AMOCO	1939
WALHOUT, P	WHEAT	1920
SAGALOVSKY, L	FERMI	1906
UNDERWOOD, W	WHEAT	1887
BERRY, G	ROOKS	1878D

MOST IMPROVED PLAYERS		
MCQUINN, J	ROCKW	96
WEITZ, R	FLPRO	73
MCNEIL, B	MTRLA	57
WIENS, F	WHEAT	50
BLAZIE, J	TYROS	47
LASKY, N	RADIO	45
O'BRIEN, D	UOP	41
STEIN, F	TELAB	40
HALLMAN, W	JCASE	37
LUDWIG, T	INDNS	35

03-DEC-87 ARGONNE ROOKS
ROUND 5 BD

	RATINGS	SCORE	2.5 FERMILAB	RATINGS	SCORE	3.5
1 BERRY, G	1869	9	.5	MOTTA, H	2123-15	.5
2 DECMAN, S	1723	8	.5	SAGALOVSKY, L	1918-12	.5
3 GREEN, D	1652	6	.5	KALIHHER, C	1809-10	.5
4 DUNWOODY, D	1620-13		0	SPIEGEL, L	1783	13
5 BINGLE, J	1499	-5	.5	SUMMERS, D	1369	9
6 TASKER, I	1429	-5	.5	WALKER, R	1366	3

08-DEC-87 WHEATON COLLEGE
ROUND 6 BD

	RATINGS	SCORE	3.5 TELLABS	RATINGS	SCORE	2.5
1 WALHOUT, P	1932-12		0	STEIN, P	2115	12
2 UNDERWOOD, W	1875	12	1	GRAFT, D	1708-12	0
3 WALLIN, R	0	0	1	SKOWRONSKI, M	1577	0
4 WALKER, P	1668-14		.5	STELTON, N	1417	14
5 WIENS, F	1319	0	1	MCKEE, M	0	0
6 MCCALLON, J	1146-11		0	ERLENBORN, M	1352	11

09-DEC-87 AT&T CHARGERS
ROUND 5 BD

	RATINGS	SCORE	5.5 A & B RADIO	RATINGS	SCORE	.5
1 WARREN, J	2039	1	1	LASKY, J	1332	-1
2 MARCOWKA, R	1935	3	1	HUMPF, R	1474	-3
3 KUMRO, D	1714	-9	.5	LASKY, N	1457	15
4 STAMM, V	1566	8	1	MIKULECKY, B	1395-12	0
5 THOMAS, J	1518	13	1	O'DELL, DW	1357-13	0
6 RADAVICIUS, E	1577	0	1F	WEISNER, T	1186	0

16-DEC-87 ROCKWELL INT'L
ROUND 5 BD

	RATINGS	SCORE	4 BELL LABS DRAGONS	RATINGS	SCORE	2
1 JONES, B	2076-19		.5	ROSLEY, D	1674	19
2 SAMELSON, C	1762	-8	.5	WARD, C	1641	5
3 RAFACZ, T	1566-34		0	HAHNE, D	1366	34
4 EFRON, D	1424	0	1	SHEU, G	0	0
5 DEWITT, G	1383	0	1	EUSTACE, D	0	0
6 MCQUINN, J	1528	0	1F		0	0

17-NOV-87 AT&T TYROS

ROUND 4 BD

4 BELL LABS INDIANS				2			
	RATINGS	SCORE		RATINGS	SCORE		
1 WHEATLEY, D	1949	3	.5	LUDWIG, T	1994	-3	.5
2 STOLTZ, B	1794	14	1	CHURCHILL, W	1647	-14	0
3 BROZOVICH, J	1755	-7	.5	BLACKMON, E	1570	11	.5
4 HARRINGER, R	1610	-19	0	SHACHTER, J	1503	29	1
5 SMITH, BR	1536	8	1	BECKLEY, S	1282	-8	0
6 SHAFF, R	1443	16	1	BEUNING, B	1345	-16	0

18-NOV-87 AMOCO RESEARCH LABS

ROUND 5 BD

1.5 WHEATON COLLEGE				4.5			
	RATINGS	SCORE		RATINGS	SCORE		
1 NAGLE, M	1938	1	.5	WALHOUT, P	1938	1	.5
2 HOLM, B	1655	0	OF	UNDERWOOD, W	1875	0	1F
3 SAJKOWSKI, D	1641	0	1	WALLIN, R	0	0	0
4 THOMPSON, M	0	0	0	WALKER, P	1668	0	1
5 SPANGLER, M	1379	-18	0	AUGSBURGER, L	1457	18	1
6 FINLAY, J	0	0	0	CHOU, S	0	0	1
(WHEAT) 7 WIENS, F	1296	23	1	SCHOONVELD, S	1301	-23	0
(WHEAT) 8 TAYLOR, F	0	0	0	WIENS, F	1319	0	1

25-NOV-87 ARGONNE ROOKS

ROUND 4 BD

4.5 TELLABS				1.5			
	RATINGS	SCORE		RATINGS	SCORE		
1 STREETS, D	2039	-12	0	STEIN, P	2099	19	1
2 BERRY, G	1866	-5	.5	GRAFT, D	1737	8	.5
3 DECMAN, S	1723	0	1	NEUMANN, J	0	0	0
4 GREEN, D	1647	5	1	ERLENBORN, M	1359	-7	0
5 DUNWOODY, D	1620	0	1	TENNIE, E	0	0	0
6 BINGLE, J	1499	0	1F	0	0	0F	
7 YOUNG, D	0	0	0	WIENCEK, T	1229	0	1 (ROOKS)

19-NOV-87 FEL-PRO

ROUND 3 BD

2 MOTOROLA				4			
	RATINGS	SCORE		RATINGS	SCORE		
1 ILANGA, R	1976	-17	0	MCNEIL, B	2062	17	1
2 WEITZ, R	1653	35	1	MARTINSONS, B	1874	-35	0
3 CRUZ, R	1367	17	.5	GONCHAROFF, N	1695	-7	.5
4 FELDMAN, A	1376	-9	0	CIPOLLA, J	1628	9	1
5 CLAY, M	0	0	0	OGASAWARA, R	1528	0	1
6 BAKER, B	982	19	.5	GRYPARIS, J	1407	-19	.5

16-NOV-87 UOP PROCESS DIV.

ROUND 3 BD

2 EXEMPLARS				4			
	RATINGS	SCORE		RATINGS	SCORE		
1 STEVANOVIC, M	2050	26	1	WONG, P	2106	-17	0
2 MICKLICH, F	1669	-6	0	CREWSE, L	2001	6	1
3 BRIONES, M	1529	18	.5	SCHULMAN, R	1887	-12	.5
4 CHEVERESAN, S	1452	-3	0	KRAKAU, H	1899	3	1
5 STUHLBARG, D	1423	-11	0	SUERTH, F	1613	11	1
6 GRAFF, R	1408	13	.5	SKULSKI, I	1637	-13	.5
7 O'BRIEN, D	1399	10	.5	BURIAN, D	1552	-10	.5

09-DEC-87 MOTOROLA

ROUND 4 BD

	RATINGS	2.5 SCORE	EXEMPLARS	RATINGS	3.5 SCORE
1 MCNEIL, B	2079	23	1 WONG, P	2089-15	0
2 GONCHAROFF, N	1688	-3	0 CREWSE, L	2007	6 1
3 CIESLEK, D	0	0	1 KRAKAU, H	1902	0 0
4 CIPOLLA, J	1637-23	0	0 SKULSKI, I	1624	23 1
5 GREENSPAN, F	1577-13	0	0 SUERTH, F	1624	19 1
6 OGASAWARA, R	1528	1	.5 BURIAN, D	1542	-1 .5
7 GRYPARIS, J	1388	0	1 FRIDIRICH, C	0	0 0 (MTRLA)

14-DEC-87 KEMPER INSURANCE

ROUND 4 BD

	RATINGS	2.5 SCORE	FEL-PRO	RATINGS	2.5 SCORE
1 SIWEK, M	1950	0	1F ILANGA, R	1959	0 OF
2 GARLAND, G	1669-21	0	0 WEITZ, R	1688	21 1
3 HUGHES, N	1633-36	0	0 CRUZ, R	1384	36 1
4 BLOEDOW, F	1423	-4	.5 FELDMAN, A	1367	4 .5
5 CUMMUTA, F	1284	0	1F	0	0 OF
6	0	0	OF	0	0 OF

24-NOV-87 BELL LABS DRAGONS

ROUND 4 BD

	RATINGS	.5 SCORE	AT&T CHARGERS	RATINGS	4.5 SCORE
1 STINSON, M	1803	-9	0 WARREN, J	2033	6 1
2 SOLNER, J	1683-21	0	0 KUMRO, D	1700	14 1
3 WARD, C	1644	-3	.5 RADAVICIUS, E	1574	3 .5
4 KELLY, S	1352-11	0	0 DOBR, K	1548	7 1
5 MUNOZ, A	1281-10	0	0 THOMAS, J	1508	10 1
6	0	0	OF	0	0 OF

24-NOV-87 ROCKWELL INT'L

ROUND 4 BD

	RATINGS	6 SCORE	J. I. CASE	RATINGS	0 SCORE
1 JONES, B	2072	1	1 KLINEFELTER, H	1418	-1 0
2 SAMELSON, C	1724	3	1 KANAS, W	1250	-3 0
3 RAFACZ, T	1532	0	1F HALLMAN, W	1188	0 OF
4 EFRON, D	0	0	1 TOGAMI, P	1068	0 0
5 MCQUINN, J	1485	6	1 REID, C	1149	-6 0
6 DEWITT, G	1383	0	1F	0	0 OF

24-NOV-87 A & B RADIO

ROUND 4 BD

	RATINGS	2 SCORE	ARGONNE KNIGHTS	RATINGS	4 SCORE
1 HUMPF, R	1474	0	0 LEVINE, D	2287	0 1
2 LASKY, J	1333	-1	0 BOLDEN, D	2057	1 1
3 LASKY, N	1435	22	.5 BENEDEK, R	2054-14	.5
4 MIKULECKY, B	1375	20	.5 YOUNG, C	1850-13	.5
5 WEISNER, T	1190	-4	0 BAURAC, D	1577	4 1
6 LASKY, JIM	0	0	1 BURBA, K	1386	0 0