

Chicago Industrial Chess League

Bulletin 8 Volume 31
May 1988



CICL PLAYOFFS SPRING 1988

Results

First Round Pairings:	Argonne Knights vs Fermilabs	[3.5 - 2.5]
	Wheaton College vs AT&T Chargers	[4.5 - 1.5]
	AT&T Skokie vs Amoco Corp.	[May 18th]
	Sears vs Motorola	[4 - 2]

Second and Third Rounds will be played at MOTOROLA on SATURDAY MAY 21.
Rounds are scheduled to begin at 9 AM and 2 PM.
Alumni Team Playoffs are also scheduled.

Motorola is located at 1301 E. Algonquin Rd., at Meacham Rd. Exit Rte. 53 at Algonquin Rd., and go west approximately 4 lights to Meacham. Turn left at Meacham and proceed to the entrance. Enter door #1 on the south side of the main complex. Call Bruce McNeil (W: 576-4522) with any questions.

NOTE: A player MUST have participated in at least one regular season match with a CICL team this season in order to participate with that team in the playoffs on Saturday. (Reference CICL Bulletin Volume 23 Number 1, 1979, August Business Meeting Minutes, Point 15.)

CICL ANNUAL BANQUET SPRING 1988

The banquet this year is scheduled at Harvey's Prime Rib for June 17th. Scheduled time to arrive is any time after 5:30 PM. No other details concerning this event are yet available.

NORTH DIVISION TOP TEN

MCNEIL, B	MTRLA 2126
TEGEL, F	ATTSK 2073D
WONG, P	EXMPL 2069C
STEVANOVIC, M	UOP 2066
LEONG, G	EXCAL 1997
CREWSE, L	EXMPL 1994
SIWEK, M	KEMPR 1968
BLOOM, B	MTRLA 1954
BUERGER, E	EXCAL 1948C
ILANGA, R	FLPRO 1899*

EAST DIVISION TOP TEN

RIZZITANO, J	CBOPE 2577
BLOCKER, C	CBOPE 2555
GRUCHACZ, R	CBOPE 2491
GILES, M	SEARS 2449
LONOFF, M	CBOPE 2337
GELBART, S	ALUMN 2223
INUMERABLE, F	PSTOF 2178
REYES, R	SEARS 2173C
CZERNIECKI, A	ALUMN 2173C
KRAS, T	ALUMN 2157

NEAR WEST DIVISION TOP TEN

LEVINE, D	KNGHT 2301
BOLDEN, D	KNGHT 2090
WARREN, J	CHRGR 2054D
BENEDEK, R	KNGHT 2032C
JONES, B	ROCKW 2016*
MARCOWKA, R	CHRGR 1914C
YOUNG, C	KNGHT 1857C
SAMELSON, C	ROCKW 1803
STINSON, M	DRGNS 1779
ROSLEY, D	DRGNS 1702

FAR WEST DIVISION TOP TEN

STEIN, F	TELAB 2146
MOTTA, H	FERMI 2046*
STREETS, D	ROOKS 2027C
LUDWIG, T	INDNS 1995
WHEATLEY, D	TYROS 1967
SAGALOVSKY, L	FERMI 1955
BERRY, G	ROOKS 1926D
UNDERWOOD, W	WHEAT 1916
NAGLE, M	AMOCO 1898
WALHOUT, F	WHEAT 1878

MOST IMPROVED PLAYERS

HICKS, C	INDNS	139
LANNIYE, D	CBOPE	98
CHURCHILL, W	INDNS	88
MCNEIL, B	MTRLA	81
WEITZ, R	FLPRO	80
SAMELSON, C	ROCKW	73
BRONFELD, A	CBOPE	72
ATKINSON, J	AMCRP	70
SPIEGEL, L	FERMI	69
SAGALOVSKY, L	FERMI	62

NORTH DIVISION 05/03/88

TEAM NAME	W	L	D	GAME POINTS	MATCH POINTS	PCT
AT&T SKOKIE	5	0	1	22.5	5.5	0.917
EXEMPLARS	5	1	0	20.5	5.0	0.833
EXCALIBURS	4	2	1	25.5	4.5	0.643
MOTOROLA	4	3	0	23.0	4.0	0.571
KEMPER INSURANCE	2	4	1	17.5	2.5	0.357
FEL-PRO	0	5	2	15.0	1.0	0.143
UOP PROCESS DIV.	0	5	1	12.0	0.5	0.083

EAST DIVISION 05/03/88

TEAM NAME	W	L	D	GAME POINTS	MATCH POINTS	PCT
ALUMNI CENTRAL	8	1	1	46.0	8.5	0.850
BEARS	7	1	2	37.5	8.0	0.800
AMOCO CORP.	3	4	3	26.5	4.5	0.450
CHI BD OF OPTIONS EXCH	3	5	2	24.5	4.0	0.400
CONTINENTAL BANK	3	6	1	23.5	3.5	0.350
CHICAGO POST OFFICE	1	8	1	20.0	1.5	0.150

NEAR WEST DIVISION 05/03/88

TEAM NAME	W	L	D	GAME POINTS	MATCH POINTS	PCT
ARGONNE KNIGHTS	10	0	0	51.5	10.0	1.000
AT&T CHARGERS	8	2	0	40.0	8.0	0.800
BELL LABS DRAGONS	4	5	0	23.5	4.0	0.444
ROCKWELL INT'L	3	5	0	21.5	3.0	0.375
A & B RADIO	2	7	1	21.0	2.5	0.250
J. I. CASE	0	8	1	9.5	0.5	0.056

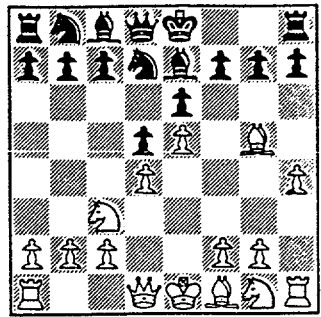
FAR WEST DIVISION 05/03/88

TEAM NAME	W	L	D	GAME POINTS	MATCH POINTS	PCT
WHEATON COLLEGE	8	1	1	38.5	8.5	0.850
BERMILAB	7	2	1	38.5	7.5	0.750
TELLABS	6	4	0	33.5	6.0	0.600
ARGONNE ROOFS	4	5	1	29.0	4.5	0.450
BELL LABS INDIANS	3	6	1	29.0	3.5	0.350
AT&T TYROS	3	7	0	18.0	3.0	0.300
AMOCO RESEARCH LABS	2	8	0	22.5	2.0	0.200

Entry #15 Best Sacrifice (or Attack) leading to Victory

White: T. Jasaitis (ALUMN - 1911) Black: T. Denmark (SEARS - UNRATED)
 April 11, 1988
 Board #6

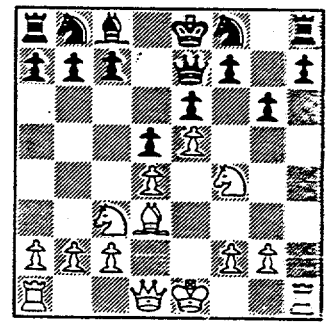
1. e4 e6 2. d4 d5 3. Nc3 Nf6 4. Bg5 Be7 5. e5 Nfd7 6. h4!



Position after 6. h4!

Bxg5?! (Accepting the 'sacrifice' results in such a bind that Black can be considered the one making a positional sacrifice! This move is not often played but has no official refutation. Another possibility would be 6....a6 7. Qg4 f5 8. Qg3 c5 9. Be3 0-0 10. Nge2 Nc6 11. Nf4 Ndb8 12. Nce2 [not 12. dxc5 d4! but now threatening 13. dxc5] c4 13. 0-0-0 Qe8 14. Neg1 Nd8 15. Be2 where White has good attacking chances on the Kingside.) 7. hxg5 Qxg5 8. Nh3 Qe7 9. Nf4 g6 (This move gets an "!" in some sources, but Black's problems are far from over.) 10. Bd3 Nf8 (Protecting against 11. Bxg6!

fxg6 12. Nxg6!) 11. Qg4 (A common square for the Queen in this variation. However, another alternative is 11. Nfxd5! exd5 12. Nxd5 Qd8 13. Nf6+ Ke7 14. Qf3 where Black is still in a bind defending against many threats.) f5? (Black is already under tremendous pressure, but perhaps 11....Bd7 is better.) 12. exf6 Qxf6 13. Nfxd5! Qd8 14. Nf4 (White could have entered the endgame up one Pawn with 14. Bxg6+! Nxg6 15. Qxg6+! hxg6 16. Rxh8+ Kd7 17. Rxd8+ Kxd8, but chooses to sacrifice a couple pawns instead to further increase the positional pressure.) Qxd4 15. 0-0-0 Qg7 16. Bc4 h5? 17. Nxh5! Qf7? 18. Nc6 19. Bb5 (White keeps up the pressure before winning material) Ed7 20. Nf6+ Ke7 21. Qc5+! Kxf6 22. Rxh8 b6 23. Ne4+ Kg7 24. Qc3+ e5 25. Bxc6 Bxc6 26. Qxe5+ Resigns. [1 - 0]



Position after 10....Nf8

10-MAR-88 FAR WEST ALL STARS				EAST ALL STARS			
ROUND		RATINGS	SCORE		RATINGS	SCORE	
	(BELAR) 1 STEIN.P	2149	-6 0	GILES.M	2475	6 1	(SEARS)
	(FERMI) 2 MOTTA.H	2066	-15 0	INUMERABLE.F	2188	15 1	(PSTOF)
	(INONS) 3 LUDWIG.T	1986	-11 0	CZERNIECKI.A	2191	7 1	(ALUMN)
	(TYROS) 4 WHEATLEY.D	1991	-24 0	WIRTSCHAFTER.D	1969	24 1	(ALUMN)
	(WHEAT) 5 WALHOUT.P	1889	2 .5	JASAITIS.A	1913	-2 .5	(ALUMN)
	(FERMI) 6 SAGALOVSKY.L	1924	23 1	COX.M	1930	-23 0	(ALUMN)
	(WHEAT) 7 UNDERWOOD.W	1901	12 1	SOMBONG.M	1725	-12 0	(CONES)
	(FERMI) 8 SPIEGEL.L	1810	24 1	RZESZETKO.R	1833	-24 0	(ALUMN)
	(ROOKS) 9 DECMAN.S	1705	18 1	FRAATS.D	1768	-27 0	(CONBR)
	(INONS) 10 CHURCHILL.W	1723	21 1	LITVINAS.A	1705	-21 0	(ALUMN)

CHICAGO INDUSTRIAL CHESS LEAGUE
Meeting of April 18, 1988
Motorola, Schaumburg

1. The meeting was called to order by CICL President, Bruce McNeil at 7:02 p.m.
2. Secretary, Fred Ciba read the minutes from the August 25, 1987 business meeting. They were approved unanimously.
3. There was no report on the June, 1988 Awards Banquet. It was announced that Jim Warren is available for consultation on same and that he can provide a mailing list of CICL members as well as chess books for a raffle. It was advised that our current Banquet Chairman, Donald Graft, should contact him.
4. The first, second and third rounds of the 1987-88 playoffs were discussed. It was felt that we should continue with recent tradition and play the first round a weekday evening and the second and third rounds on a Saturday. May 21st was nominated as the Saturday and it was passed unanimously. A playing sight was then discussed. Some felt that we were wearing out our welcome at Amoco in Naperville and we should seek a new location. Continental and First National Bank downtown were discussed. Most felt that Motorola in Schaumburg would work out the best. Bruce McNeil will check on availability. Russ Rzeszutko volunteered to organize all three rounds. Norm Hughes will help.
5. Bruce McNeil called for a volunteer to be trophy chairman; Marty Franek stepped forward. As per the CICL's decision to let team captains decide on functional awards versus trophies, Marty will call all winning captains for their choice.
6. Bruce McNeil called for a volunteer to organize our next Tornado; none stepped forward. Never the less, Bruce will contact Ken Marshall of the Forest Park Chess Club to drum up interest.
7. Ross Siegel was voted favorably to replace Russ Rzeszutko as East Chairman. Wes Underwood resigned as Far West Chairman but will act until a replacement is found.

8. The following officers were all elected unanimously....

Bruce McNeil	President
Fred Ciba II	Secretary
Jim Brotsos	Treasurer

9. Dan Kumro moved that we recognize the outstanding service that Bruce McNeil has contributed to the CICL in his 4 year tenure-ship. Wes Underwood resigned as Bulletin Editor. Fred Ciba moved that we recognize the outstanding service that Wes has provided the league during his four years in putting together and distributing the CICL Bulletin newspaper. Russ Rzeszutko volunteered to be the new Bulletin Editor. It was thought that Charlie Ward would continue to be Ratings Chairman.
9. The question of delinquent team dues was brought up. Without the presence of the treasurer, this discussion was shelved until it could be determined if all teams had paid up for 1987-88.
10. Marty Franek asked that the following members be voted into the Alumni East team.... Charles Hutter, Sheldon Gelbart. They were elected unanimously.
11. It was reported by Russ Rzeszutko that the Soviet team of Kiev, USSR have not responded as of yet to a possible "top ten" match to be held this summer. Russ will continue to persue.
12. Bruce McNeil closed the meeting at 7:55 p.m.

Fred Ciba II
Secretary CICL

ATTENDEES

April 18, 1988

Russ Rzeszutko	Alumni East
Fred Ciba II	Sears
Bruce McNeil	Motorola
Marty Franek	Alumni East
Norm Hughes	Kemper
Jeff McQuinn	Rockwell
Wes Underwood	Wheaton College
Steve Schoonveld	Wheaton College
Dan Kumro	AT&T Chargers
Karel Dobr	AT&T Chargers

No additional entries for the best games contest will be accepted. There were a total of 15 games submitted, distributed among the five categories. There will be declared one winner from each category, five winners in all, each to receive a \$10 gift certificate good towards chess books, equipment, etc. from the APCT. Prizes will be awarded at the banquet on June 17th.

Entries:

1) Best Sacrifice (or Attack) Leading to Victory

Sajkowski - Sagalovsky
Holm - Harringer
Graft - Brozovich
Walhout - Sagalovsky
Jasaitis - Denmark

2) Best Endgame Play Leading to Victory

Graft - Sagalovsky
Sagalovsky - Cox

3) Best Salvage of a Draw (or Win) when Behind

Blackmon - Brozovich
Kallner - Underwood

4) Best Upset Victory

Graft - McQuinn
Hicks - Gaines
Bronfeld - Reyes

5) Best Overall Game

Berry - Stoltz
Mathur - Bingle
Sagalovsky - Stoltz

16-MAR-88 ARGONNE KNIGHTS
ROUND 9 BD

RATINGS	SCORE	6	A & B RADIO	RATINGS	SCORE	0
1	2031	1	LASKY, J	1	1358	-1
2	1852	3	HUMPF, R	2	1458	-4
3	1624	13	LASKY, N	3	1472	-13
4	1624	6	MIKULECKY, B	4	1377	-9
5	0	0	O'DELL, DW	5	1368	0
6	1386	7	WEISNER, T	6	1186	-11

24-MAR-88 CONTINENTAL BANK
ROUND 10 BD

RATINGS	SCORE	3.5	AMOCO CORP.	RATINGS	SCORE	2.5
1	1751-26	0	ATKINSON, J	1	1690	26
2	1739	7	SMILEY, R	2	1834	-7
3	1670-30	0	SOPRYCH, T	3	1550	30
4	1422	17	CORBIN, Z	4	1341	-17
5	1180	0	COOPER, J	5	0	0
6	0	0	KRULL, E	6	1301	0
7	0	0	MARTIN, W	7	0	0

29-MAR-88 CONTINENTAL BANK
ROUND 9 BD

RATINGS	SCORE	4.5	CHI BD OF OPTIONS EXCH	RATINGS	SCORE	1.5
1	1746	22	BRONFELD, A	1	1731	-22
2	1640	-11	LANNIYE, D	2	1467	11
3	1528	14	ROSING, B	3	1390	-14
4	1437	0	FREDERICK, M	4	0	0
5	1180	0	COOPER, J	5	0	0
6	0	0	KRULL, E	6	0	0
7	1180	0	MARTIN, W	7	0	0

29-MAR-88 AMOCO RESEARCH LABS
ROUND 11 BD

RATINGS	SCORE	2.5	BELL LABS INDIANS	RATINGS	SCORE	3.5
1	1894	-11	CHURCHILL, W	1	1712	11
2	1644	19	BLACKMON, E	2	1591	-19
3	1673	-40	HICKS, C	3	1317	40
4	1332	35	SHACKTER, J	4	1551	-35
5	1366	-30	BECKLEY, S	5	1238	30
6	0	0	MATHUR, P	6	0	0

04-APR-88 A & B RADIO
ROUND 10 BD

RATINGS	SCORE	1	AT&T CHARGERS	RATINGS	SCORE	5
1	1368	-1	WARREN, J	1	2053	1
2	1454	-10	MARCOMKA, R	2	1914	0
3	1459	-15	KUMRO, D	3	1571	7
4	1175	0	RADAVICIUS, E	4	1585	10
5	1360	0	BRADY, R	5	0	0
6	1360	0	FAJRIUS, J	6	1570	0

04-APR-88 J. I. LASE
ROUND 10 BD

RATINGS	SCORE	1	ARGONNE KNIGHTS	RATINGS	SCORE	5
1	1644	-1	LEVITHE, D	1	2000	1
2	1497	-1	GOLDBERG, D	2	1909	1
3	1496	-3	YOUNG, C	3	1085	3
4	1470	-3	WOURG, D	4	1637	3
5	1176	42	FELLDON, K	5	1430	0
6	1068	-6	BURBA, E	6	1393	4

05-APR-88 SEARS
ROUND 5 BD

RATINGS	SCORE	3.5	CHICAGO POST OFFICE	RATINGS	SCORE	2.5
1	2157	17	INUMERABLE, F	1	2203	-25
2	1911	0	LESTER, M	2	1570	0
3	1815	-22	COOPER, W	3	1653	32
4	1660	0	CARTER, L	4	1560	0
5	1560	0	ANGLIN, B	5	1560	0
6	1369	0	PETWAY, L	6	1369	0

11-APR-88 ALUMMI CENTRAL
ROUND 8 BD

RATINGS	SCORE	3	SEARS	RATINGS	SCORE	3
1	2208	15	GILES, M	1	2481	-15
2	2155	2	REYES, R	2	2174	-1
3	2198	-29	LATIMER, E	3	1911	25
4	2036	-39	BROCKETT, M	4	1696	39
5	1993	6	CHEMNOMODIKOW	5	1660	-6
6	1911	0	DENMARK, T	6	0	0

19-APR-88 CHI BD OF OPTIONS EXCH
ROUND 7 BD

RATINGS	SCORE	1.5	CHICAGO POST OFFICE	RATINGS	SCORE	4.5
1	1793	0	INUMERABLE, F	1	2178	0
2	1618	-3	GREGORY, J	2	2085	3
3	1478	35	COOPER, W	3	1885	-35
4	0	0	LESTER, M	4	1570	0
5	0	0	CARTER, L	5	1405	0
6	0	0	PETWAY, L	6	0	0

19-APR-88 SEARS
ROUND 9 BD

RATINGS	SCORE	3.5	AMOCO CORP.	RATINGS	SCORE	2.5
1	2465	1	ATKINSON, J	1	1716	-1
2	1936	-20	SMILEY, R	2	1827	29
3	1793	-8	SOPRYCH, T	3	1580	13
4	1735	-35	WENTLING, C	4	1508	35
5	0	0	CAMPBELL, C	5	1145	0
6	1369	0	COOPER, J	6	0	0

26-APR-88 CHICAGO POST OFFICE
ROUND 10 BD

RATINGS	SCORE	1.5	SEARS	RATINGS	SCORE	4.5
1	2088	18	GILES, M	1	2467	-18
2	1650	-8	LATIMER, E	2	1916	5
3	1570	-10	GOLLA, R	3	1785	7
4	1405	36	CHEMNOMODIKOW	4	1654	-36
5	0	0	JANNEY, C	5	0	0
6	0	0	CIBA, F	6	1369	0

27-APR-88 AMOCO CORP.
ROUND 8 BD

RATINGS	SCORE	3	CHI BD OF OPTIONS EXCH	RATINGS	SCORE	3
1	1715	-23	BRONFELD, A	1	1709	23
2	1656	5	LANNIYE, D	2	1513	-5
3	1656	5	WENTLING, C	3	1576	0
4	1564	0	DUMPHY, J	4	0	0
5	1140	0	COOPER, J	5	0	0
6	0	0	CIBA, F	6	0	0

1988-89 ALUMNI CENTRAL
ROUND 10 BD

1	RATINGS SCORE	0	CHD BD OF OPTIONS EXCH	0
1	0 0 0 0 0 0	0 0 0 0 0 0		0 0 0 0 0 0
2	0 0 0 0 0 0	0 0 0 0 0 0		0 0 0 0 0 0
3	0 0 0 0 0 0	0 0 0 0 0 0		0 0 0 0 0 0
4	0 0 0 0 0 0	0 0 0 0 0 0		0 0 0 0 0 0
5	0 0 0 0 0 0	0 0 0 0 0 0		0 0 0 0 0 0
6	0 0 0 0 0 0	0 0 0 0 0 0		0 0 0 0 0 0

15-APR-88 AMOLD RESEARCH
ROUND 10 BD

1	RATINGS SCORE	2	TELLABS	4
1	1883 15	0	STEIN, P	2143-15
2	1663 6	0	GRAFT, D	1749 -6
3	1367 -5	0	NEUMANN, J	1728 5
4	1336 28	1	STELTON, N	1429-28
5	0 0 0	0	ERLENBORN, M	1363 0
6	1354 0	0	TENNIE, E	0 0 1

13-APR-88 WHEATON COLLEGE
ROUND 12 BD

1	RATINGS SCORE	3.5	FERMILAB	2.5
1	1891-13	0	MOTTA, H	2051 13
2	1913 3	0	SAGALOVSKY, L	1947 -3
3	1654-12	0	SPIEGEL, L	1834 12
4	1669 29	1	KALITHER, C	1768-29
5	1489 34	1	GAINES, I	1679-22
6	0 0 0	0	FISCHLER, M	1352 0 0

20-APR-88 FERMILAB
ROUND 11 BD

1	RATINGS SCORE	5	TELLABS	1
1	2064-18	0	STEIN, P	2128 18
2	1944 11	1	GRAFT, D	1743-11
3	1846 15	1	NEUMANN, J	1733-15
4	1739 0	1	MCKEE, M	0 0 0
5	1657 11	1	SKOWRONSKI, M	1574-17
6	0 0 0	1	VERIVE, J	0 0 0

20-APR-88 ARGONNE ROOKS
ROUND 12 BD

1	RATINGS SCORE	3.5	BELL LABS INDIANS	2.5
1	1939-13	0	LUDWIG, T	1975 20
2	1723 -6	0	BLACKMON, E	1572 10
3	1475-30	0	HICKS, C	1357 30
4	1663 0	1F		0 0 0
5	1490 0	1F		0 0 0
6	1414 0	1F		0 0 0
7	1490-18	0	TASKER, I	1414 27

NAME	TEAM	W	L	D	RATING	NAME	TEAM	W	L	D	RATING
ABSILL, J	UOP	1	1	0	1270H	BURTIAN, D	EXMPL	1	0	3	1531
AF SHAR, J, A	DRGNS	0	0	0	0000?	BURK, R	ALUMN	0	0	0	1500C
ROSEN, R	CUNBK	0	3	0	0000?	CARNEY, D	KEMPR	0	0	1	0000?
GETTAR, J	ZENTH	0	0	0	1581	CAMPBELL, C	AMCRP	0	5	2	1145
ALEXANDER, H	FBNBK	0	0	0	0000?	CARPENTER, P	ATTSK	0	3	1	1428
ANDERSON, C J	DRGNS	0	1	0	0000?	CARTER, D	JCASE	0	1	1	1104*
ANDERSON, MARK	ATTSK	0	2	0	1264#	CARTER, L	PSTOF	4	5	1	1441#
ANDERSON, N	EXCAL	2	0	3	1711C	CARTER, R	EXECU	0	0	0	1544#
ANDRESEN, T	EXCAL	0	0	0	1785C	CHAN, H	INDNS	0	0	0	0000?
ANBLIN, B	SEARS	0	0	1	1560*	CHARKOVSKY, R	EXCAL	5	0	1	1637
ANTHONY, M	FBNBK	0	0	0	1858#	CHEKOVSKY, R	FBNBK	0	0	0	1642#
ASHBROOK, R	FLPRD	0	0	0	853*	CHEKOVSKY, R	SEARS	3	5	1	1618*
ATKINSON, J	AMCRP	4	4	2	1692	CHEVERESAN, S	UOP	1	3	0	1440
AUBSBERGER, L	WHEAT	3	2	3	1523*	CHOU, S	WHEAT	2	0	0	0000?
BAKER, B	FLPRD	1	1	1	1039	CHRISTIAN, R	ATTSK	5	0	1	1877
BALL, J	CUNBK	0	0	0	0000?	CHURCHILL, W	INDNS	5	3	1	1744
BARRETT, P	AMCRP	0	0	0	0000?	CIBA, F	SEARS	2	0	1	1369
BARTALONE, F	FLPRD	0	0	0	0000?	CIESLEK, D	MTRLA	3	0	1	1908#
BARTON, J	WHEAT	0	0	0	1405#	CIPOLLA, J	MTRLA	1	2	0	1614*
BARVISH, A	ZENTH	0	0	0	1691	CIPOLLA, M	MTRLA	0	0	0	0000?
BAURAC, D	KNIGHT	8	1	0	1640C	CLAY, M	FLPRD	0	3	0	0000?
BECKLEY, S	INDNS	1	5	0	1268#	COKER, D	CUNBK	0	1	0	0000?
BENEDEK, R	KNIGHT	6	0	2	2032C	COLLINS, P	MTRLA	0	0	0	0000?
BERNY, K	CBOPE	0	0	0	0000?	COLTER, D	JCASE	0	0	0	0000?
BERRY, G	ROOKS	5	2	4	1926D	CONWAY, F	ZENTH	0	0	0	1323
BERTOLUCCI, B	FERMI	1	0	0	0000?	COOPER, J	AMCRP	0	2	0	0000?
BEUNING, B	INDNS	0	1	1	1329*	COOPER, K	MTRLA	1	0	0	0000?
BILLINGSLEY, T	FBNBK	0	0	0	0000?	COOPER, W	FLPRD	4	5	1	1642*
BINGLE, J	ROOKS	2	3	1	1472C	CORBIN, Z	AMCRP	2	5	0	1324#
BLACKMON, E	INDNS	1	4	4	1582	COURTNEY, J	CUNBK	0	0	0	0000?
BLAZIE, J	TYROS	4	1	0	1587	COX, M	ALUMN	5	1	2	1994
BLOCKER, C	CBOPE	1	3	0	2555	CREWSE, L	EXMPL	4	1	2	1907
BLOEDOW, P	KEMPR	1	3	1	1393	CRUZ, R	FLPRD	1	2	1	1408*
BLOOM, B	MTRLA	2	0	2	1954	CUMMUT, A, P	FLPRD	1	2	1	1275
BLOOMFIELD, R	ATTSK	0	0	0	0000?	CUSTER, M	ROCKW	0	0	0	0000?
BOLDEN, D	KNIGHT	8	0	0	2090	CZERNIECKI, A	ALUMN	8	3	0	2173C
BOOTH, D	AMUCU	0	0	0	1443	DACUNA, J	FBNBK	0	0	0	1282*
BORUM, J	DRGNS	1	0	0	0000?	DAVIDOFF, B	KNIGHT	0	0	0	0000?
BRADY, R	CHRGK	1	0	0	0000?	DAWSON, J	KNIGHT	0	0	0	1473
BRANDT, W	DRGNS	0	1	0	1364*	DAWSON, T	RUCKW	0	0	0	1105*
BREKTON, K	DRGNS	0	4	2	1546	DEBROAT, R	ROOKS	3	4	4	1717C
BRIJONES, M	UOP	0	4	2	1700	DELANEY, B	CBOPE	0	0	0	0000?
BROCKETT, M	SEARS	4	1	0	1732	DEMARK, T	AMCRP	2	1	0	0000?
BRONFELD, A	CBOPE	4	3	1	1527C	DEWITT, G	SEARS	2	1	0	0000?
BROTOS, J	EXCAL	4	1	0	0000?	DEZONNO, T	ROCKW	1	4	1	1340
BROWN, J	TYROS	1	0	0	0000?	DIXON, T	ROCKW	0	2	0	0000?
BROZOVICH, J	TYROS	2	3	1	1694C	DITTMER, T	WHEAT	0	0	0	0000?
BUCHANAN, R	FBNBK	0	0	0	1449C	DIXON, R	WHEAT	0	1	1	1615
BUERGER, E	EXCAL	3	3	1	1948C	DOBK, K	CBOPE	2	3	0	1546D
BURKH, K	KNIGHT	3	1	0	1397C	DOUGHTY, J	WHEAT	0	0	0	0000?

UNRATED
5 TO 9 RATED DUBBLS
10 TO 14 RATED GUILDS

C - CENTURY CLUB MEMBER
D - DOUBLE CLUBTION

NAME	TEAM	W	L	D	RATING	NAME	TEAM	W	L	D	RATING	NAME	TEAM	W	L	D	RATING
BAILEY, J	CBDFE	1	0	1	0000?	BAILEY, J	CBDFE	0	0	0	0000?	BAILEY, J	CBDFE	0	0	0	0000?
BALDWIN, D	SEARS	0	0	0	1590#	BALDWIN, D	SEARS	0	0	0	1590#	BALDWIN, D	SEARS	0	0	0	1590#
BALDWIN, D	SEARS	1	3	0	1549	BALDWIN, D	SEARS	0	0	0	1549	BALDWIN, D	SEARS	0	0	0	1549
BALDWIN, D	SEARS	2	0	1	1799	BALDWIN, D	SEARS	0	0	0	1799	BALDWIN, D	SEARS	0	0	0	1799
BALDWIN, D	SEARS	0	1	0	1688*	BALDWIN, D	SEARS	0	0	0	1688*	BALDWIN, D	SEARS	0	0	0	1688*
BALDWIN, D	SEARS	0	1	0	1253	BALDWIN, D	SEARS	0	0	0	1253	BALDWIN, D	SEARS	0	0	0	1253
BALDWIN, D	SEARS	3	3	0	1404#	BALDWIN, D	SEARS	0	0	0	1404#	BALDWIN, D	SEARS	0	0	0	1404#
BALDWIN, D	SEARS	0	0	1	1807	BALDWIN, D	SEARS	0	0	0	1807	BALDWIN, D	SEARS	0	0	0	1807
BALDWIN, D	SEARS	4	3	0	1363#	BALDWIN, D	SEARS	0	0	0	1363#	BALDWIN, D	SEARS	0	0	0	1363#
BALDWIN, D	SEARS	4	3	1	1292#	BALDWIN, D	SEARS	0	0	0	1292#	BALDWIN, D	SEARS	0	0	0	1292#
BALDWIN, D	SEARS	0	0	0	1693D	BALDWIN, D	SEARS	0	0	0	1693D	BALDWIN, D	SEARS	0	0	0	1693D
BALDWIN, D	SEARS	1	1	0	0600?	BALDWIN, D	SEARS	0	0	0	0600?	BALDWIN, D	SEARS	0	0	0	0600?
BALDWIN, D	SEARS	2	1	0	1578C	BALDWIN, D	SEARS	0	0	0	1578C	BALDWIN, D	SEARS	0	0	0	1578C
BALDWIN, D	SEARS	0	0	0	1232#	BALDWIN, D	SEARS	0	0	0	1232#	BALDWIN, D	SEARS	0	0	0	1232#
BALDWIN, D	SEARS	1	4	2	1403	BALDWIN, D	SEARS	0	0	0	1403	BALDWIN, D	SEARS	0	0	0	1403
BALDWIN, D	SEARS	0	5	0	0000?	BALDWIN, D	SEARS	0	0	0	0000?	BALDWIN, D	SEARS	0	0	0	0000?
BALDWIN, D	SEARS	0	2	0	1352	BALDWIN, D	SEARS	0	0	0	1352	BALDWIN, D	SEARS	0	0	0	1352
BALDWIN, D	SEARS	0	0	1	1589*	BALDWIN, D	SEARS	0	0	0	1589*	BALDWIN, D	SEARS	0	0	0	1589*
BALDWIN, D	SEARS	0	0	1	1793#	BALDWIN, D	SEARS	0	0	0	1793#	BALDWIN, D	SEARS	0	0	0	1793#
BALDWIN, D	SEARS	0	1	0	0000?	BALDWIN, D	SEARS	0	0	0	0000?	BALDWIN, D	SEARS	0	0	0	0000?
BALDWIN, D	SEARS	1	4	5	1741	BALDWIN, D	SEARS	0	0	0	1741	BALDWIN, D	SEARS	0	0	0	1741
BALDWIN, D	SEARS	1	0	2	1726	BALDWIN, D	SEARS	0	0	0	1726	BALDWIN, D	SEARS	0	0	0	1726
BALDWIN, D	SEARS	2	4	0	0000?	BALDWIN, D	SEARS	0	0	0	0000?	BALDWIN, D	SEARS	0	0	0	0000?
BALDWIN, D	SEARS	3	1	0	0000?	BALDWIN, D	SEARS	0	0	0	0000?	BALDWIN, D	SEARS	0	0	0	0000?
BALDWIN, D	SEARS	3	4	2	1668C	BALDWIN, D	SEARS	0	0	0	1668C	BALDWIN, D	SEARS	0	0	0	1668C
BALDWIN, D	SEARS	0	0	0	1475*	BALDWIN, D	SEARS	0	0	0	1475*	BALDWIN, D	SEARS	0	0	0	1475*
BALDWIN, D	SEARS	3	4	0	1686	BALDWIN, D	SEARS	0	0	0	1686	BALDWIN, D	SEARS	0	0	0	1686
BALDWIN, D	SEARS	0	0	1	2223	BALDWIN, D	SEARS	0	0	0	2223	BALDWIN, D	SEARS	0	0	0	2223
BALDWIN, D	SEARS	0	1	0	1494	BALDWIN, D	SEARS	0	0	0	1494	BALDWIN, D	SEARS	0	0	0	1494
BALDWIN, D	SEARS	0	0	0	0000?	BALDWIN, D	SEARS	0	0	0	0000?	BALDWIN, D	SEARS	0	0	0	0000?
BALDWIN, D	SEARS	6	0	3	2449	BALDWIN, D	SEARS	0	0	0	2449	BALDWIN, D	SEARS	0	0	0	2449
BALDWIN, D	SEARS	5	2	2	1792C	BALDWIN, D	SEARS	0	0	0	1792C	BALDWIN, D	SEARS	0	0	0	1792C
BALDWIN, D	SEARS	2	2	3	1690D	BALDWIN, D	SEARS	0	0	0	1690D	BALDWIN, D	SEARS	0	0	0	1690D
BALDWIN, D	SEARS	0	0	0	0000?	BALDWIN, D	SEARS	0	0	0	0000?	BALDWIN, D	SEARS	0	0	0	0000?
BALDWIN, D	SEARS	0	0	0	1190#	BALDWIN, D	SEARS	0	0	0	1190#	BALDWIN, D	SEARS	0	0	0	1190#
BALDWIN, D	SEARS	1	1	1	1416*	BALDWIN, D	SEARS	0	0	0	1416*	BALDWIN, D	SEARS	0	0	0	1416*
BALDWIN, D	SEARS	4	4	3	1732	BALDWIN, D	SEARS	0	0	0	1732	BALDWIN, D	SEARS	0	0	0	1732
BALDWIN, D	SEARS	3	0	1	1663C	BALDWIN, D	SEARS	0	0	0	1663C	BALDWIN, D	SEARS	0	0	0	1663C
BALDWIN, D	SEARS	0	0	0	1564C	BALDWIN, D	SEARS	0	0	0	1564C	BALDWIN, D	SEARS	0	0	0	1564C
BALDWIN, D	SEARS	0	0	0	2106	BALDWIN, D	SEARS	0	0	0	2106	BALDWIN, D	SEARS	0	0	0	2106
BALDWIN, D	SEARS	0	0	0	0000?	BALDWIN, D	SEARS	0	0	0	0000?	BALDWIN, D	SEARS	0	0	0	0000?
BALDWIN, D	SEARS	0	0	0	0000?	BALDWIN, D	SEARS	0	0	0	0000?	BALDWIN, D	SEARS	0	0	0	0000?
BALDWIN, D	SEARS	1	0	0	2471	BALDWIN, D	SEARS	0	0	0	2471	BALDWIN, D	SEARS	0	0	0	2471
BALDWIN, D	SEARS	2	3	2	1366	BALDWIN, D	SEARS	0	0	0	1366	BALDWIN, D	SEARS	0	0	0	1366
BALDWIN, D	SEARS	0	0	0	0000?	BALDWIN, D	SEARS	0	0	0	0000?	BALDWIN, D	SEARS	0	0	0	0000?
BALDWIN, D	SEARS	3	3	0	1399*	BALDWIN, D	SEARS	0	0	0	1399*	BALDWIN, D	SEARS	0	0	0	1399*
BALDWIN, D	SEARS	0	0	0	1036#	BALDWIN, D	SEARS	0	0	0	1036#	BALDWIN, D	SEARS	0	0	0	1036#

C - CENTURY CLUB MEMBER
 D - DOUBLE CENTURION
 * - 5 TO 9 RATED GAMES
 # - 10 TO 24 RATED GAMES
 - UNRATED

NAME	TEAM	W	L	D	RATING	NAME	TEAM	W	L	D	RATING
SATTERLEE, D	JCASE	0	0	0	1585	TAYLOR, J	FLPRO	0	0	0	0000?
SAWDO, E	JCASE	0	1	0	1446	TEGEL, F	ATTSK	4	0	2	2073D
SCHOONVELD, S	WHEAT	2	1	0	1278#	TENNIE, E	TELAB	2	1	0	0000?
SCHULMAN, R	EXMPL	2	0	2	1874C	THOMAS, G	TYROS	0	0	0	1373
SCHWARTZ, S	SEARS	1	0	1	1643C	THOMAS, J	CHRGR	3	0	0	1531C
SEDLOCK, E	EXECU	0	0	0	1786	THOMPSON, M	AMOCO	2	3	2	1364#
SHACHTER, J	INDNS	3	3	0	1516	THOMPSON, R	FLPRO	0	0	0	1060
SHAFER, R	TYROS	2	1	1	1480C	TOGAMI, P	JCASE	2	3	1	1062#
SHELBY, J	PSTOF	0	0	0	0000?	TURPIN, S	INDNS	0	1	0	0000?
SHEU, G	DRGNS	1	1	1	1335#	ULMISHEK, G	ROOKS	0	0	0	1282#
SHUREY, S	UOP	1	0	0	1139#	UNDERWOOD, W	WHEAT	6	0	4	1916
SIEGEL, R	CONBK	4	5	1	1439	UNRUH, J	DRGNS	0	0	0	1174
SILVERBERG, A	FNBK	0	0	0	1897	VAN DER BIJ, J	FERMI	0	0	0	1779*
SIWEK, M	KEMPR	1	2	3	1968	VAN MEER, J	KEMPR	0	0	1	1808
SKINNER, S	ZENTH	0	0	0	1179	VERIVE, J	TELAB	1	1	1	0000?
SKOWRONSKI, M	TELAB	2	4	1	1557*	VICK, H	MTRLA	0	2	0	1477
SKULSKI, I	EXMPL	2	1	2	1646	WAGNER, R	ATTSK	0	0	0	1724
SMILEY, R	AMCRP	4	2	1	1861	WAGNER, RA	MTRLA	0	0	0	1517*
SMITH, BR	TYROS	1	1	0	1509	WALHOUT, F	WHEAT	1	5	5	1878
SMITH, M	FNBK	0	0	0	1550	WALKER, P	WHEAT	4	3	1	1642
SOLBERG, R	CONBK	0	0	0	0000?	WALKER, R	FERMI	0	2	1	1369C
SOLEYMANI, S	ROCKW	0	0	0	0000?	WALLIN, R	WHEAT	5	2	2	1698#
SOLNER, J	DRGNS	0	1	0	1662*	WARD, C	DRGNS	3	2	3	1665C
SOMBONG, M	CONBK	0	7	3	1713	WARREN, J	CHRGR	6	1	1	2054D
SOPRYCH, T	AMCRP	3	2	3	1558	WEBSTER, D	INDNS	0	0	0	1842
SPANGLER, M	AMOCO	0	5	1	1354	WEIGAND, J	ZENTH	0	0	0	1284
SPIEGEL, L	FERMI	9	1	0	1861	WEIHMILLER, W	AMCRP	1	4	1	1993
STAMM, V	CHRGR	4	0	0	1597C	WEISNER, T	RADIO	2	5	1	1175
STEIN, P	TELAB	7	2	2	2146	WEITZ, R	FLPRO	4	2	1	1716
STELTON, N	TELAB	1	2	3	1397	WENTLING, C	AMCRP	2	3	0	1543
STEVANOVIC, M	UOP	2	2	1	2066	WHEATLEY, D	TYROS	4	3	2	1967
STINSON, M	DRGNS	1	4	0	1779	WHITE, H	JCASE	1	2	1	1543
STOLTZ, B	TYROS	1	1	1	1808	WIENCEK, T	ROOKS	3	2	0	1259*
STRAUBE, D	WHEAT	0	0	0	1296*	WIENS, P	WHEAT	5	2	1	1324
STREETS, D	ROOKS	0	2	1	2027C	WILLS, B	WHEAT	0	1	0	0000?
STUHLBARG, D	UOP	2	2	1	1426	WILSON, A	FNBK	0	0	0	1532
SUCH, A	DRGNS	0	0	0	1476	WINDGRAD, Y	INDNS	0	0	0	0000?
SUE, H	ATTSK	0	0	0	1410	WIRTSCHAFTER, D	ALUMN	6	1	1	1999
SUERTH, F	EXMPL	3	1	2	1647	WONG, P	EXMPL	2	4	0	2069C
SULLIVAN, J	EXCAL	5	2	1	1792C	WROBEL, J	AMOCO	0	0	0	1654
SUMMERS, D	FERMI	1	1	2	1384#	YOUNG, C	KNGHT	6	0	2	1857C
SWANSON, V	EXECU	0	0	0	1667	YOUNG, D	ROOKS	0	1	0	0000?
SWIDORSKI, M	CHRGR	0	0	0	1360C	ZAROMB, S	ROOKS	0	1	1	1445*
TAGHAP, W	WHEAT	1	0	0	0000?	ZBELLNER, J	CONBK	6	4	0	1180
TASKER, I	ROOKS	3	2	2	1441*	ZYLES, J	CBOPE	0	0	0	1370*
TAYLOR, F	WHEAT	1	3	0	0000?						

Y - UNRATED

- 5 TO 9 RATED GAMES

* - 10 TO 24 RATED GAMES

C - CENTURY CLUB MEMBER

D - DOUBLE CENTURION