

Chicago Industrial Chess League



Bulletin 9, Volume 32
June, 1989

Congratulations to the Argonne KNIGHTS, the 1989 C.I.C.L. champions. The KNIGHTS were the only team in the C.I.C.L. to go undefeated throughout both the regular season and the post-season playoffs. And congratulations also to Sears, who took second place in the league championship playoffs on tie-breaks over Fermilab.

Congratulations are also in order for the EXCALIBURS, now the 1989 C.I.C.L. Alumni champions. The EXCALIBURS won the title by defeating their North division rivals, the EXEMPLARS, by a score of 3 1/2-1-1/2, and then defeating Alumni Central of the East division by a score of 4-2. A complete summary of the regular and alumni playoff results are included in this bulletin.

And, good luck to the new league officers who will be running things next season. At the conclusion of the current session, Ross Siegel of Continental Bank will assume the responsibilities of C.I.C.L. President, while Fred Ciba and Jim Brotsos stay on as league secretary and treasurer, respectively. Tim Kras becomes the new East division chairman (the slot vacated by Ross Siegel), and Wayne Brandt takes over as Near West division chairman. Irwin Gaines will return as Far West division chairman, and Norm Hughes will return as North division chairman.

Bulletin Editor - Marty Franek

- 1 -

Event: Chicago Industrial Chess League Playoffs
Round Two: Motorola vs. Argonne Nat'l Lab
Date: May 20, 1989

White: David Cieslek

Black: Darren Bolden

(Annotated by Darren Bolden)

1. d4 Nf6
2. c4 c5
3. Nf3

White should not worry about the pawn on c4 and play 12. Rcl. If 12. ... Q:c4 ? then 13. Nd5 wins for White.

This is a very common move which avoids the dynamics of both the Benko Gambit and Modern Benoni after 3. d5. I play the former.

12. ... Nd7
13. Rac1 Rc8
14. Nce2 Be7
15. Qd1

3. ... e6
4. Nc3 cd
5. N:d4 b6 !?

It seems as if White is without a plan.

The move 5. ... b6!? prevents White from playing 6. g3 and 7. Bg2, establishing a free game and pressure in the center. Black can also play 5. ... a6 or 5. ... Nc6.

15. ... O-O
16. b3 Nf6
17. Qd3 !? Qb8

6. Bg5

The idea is to attack along the a8-h1 diagonal.

18. Nc3 ?

During the game I looked at 6. Ncb5 d6 7. Bf4 e5 8. Bg5 a6 9. B:f6 g:f6 10. Na3 f5 with a position similar to the Lasker Sicilian.

This move makes White's 17th move look bad. White usually plays for a gradual Kingside attack with h3, f4, g4 and Ng3.

6. ... a6
7. e4 d6
8. g3

18. ... Rfd8
19. Rfe1 Bf8

During the game I looked at 8. e5 ?! de 9. Qf3 e:d4 10. Q:a8 Qc7! The key is that the White queen is in danger of being trapped while the other knight hangs.

This way if I ever play e5 or d5, White will not gain a tempo on the undefended bishop.

20. Qe2 Qa8
21. Na4 Nd7

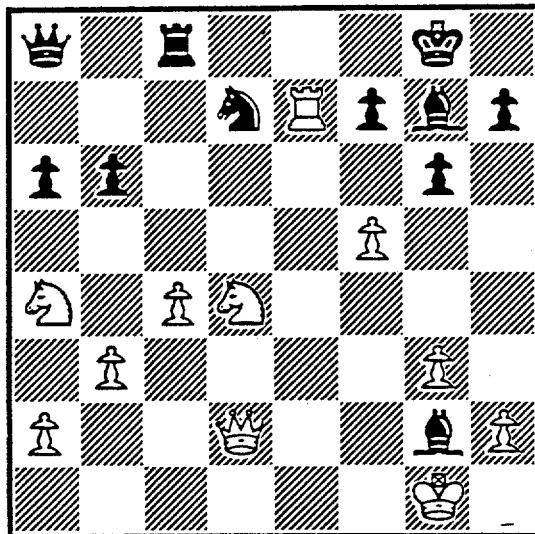
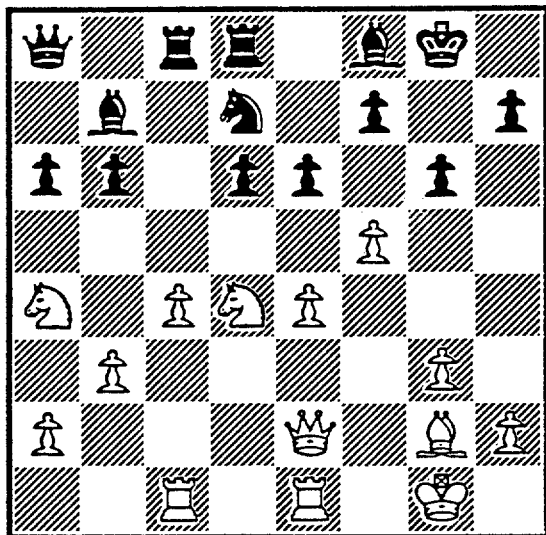
8. ... Bb7
9. Bg2 Nbd7
10. O-O Qc7
11. B:f6 N:f6
12. Qa4 ch

It looks like White has a good position, but look again! The knight on a4 is misplaced, the knight on d4 is undefended, Black has pressure on the a8-h1 diagonal, and the bishop on f8

is strong after Black plays g6.

22. f4 g6
23. f5

27. R:e1 B:g2
28. Re7 !



I thought for seven minutes on my next reply; my longest stint of the game. At this point I took an assessment of White's weak points and conjured up a deadly combination. Can you see the plan? Read my note to the 21st move for clues.

23. ... ef
24. ef Bg7 !
25. Rcd1

White tries to mix it up but adds gasoline to the fire. Can you find Black's best move?

28. ... Bh3 !

Threatening B:d4 ch and Qg2 mate!

29. Nc2 Qf3
30. Ne3 Bf6 !
31. R:d7 Bg5

0:1

Both 25. Nf3 and 25. Nc2 lose to 25. ... b5! and 25. Ne6 is nonsense.

25. ... Re8 !

The winning move; also the most accurate.

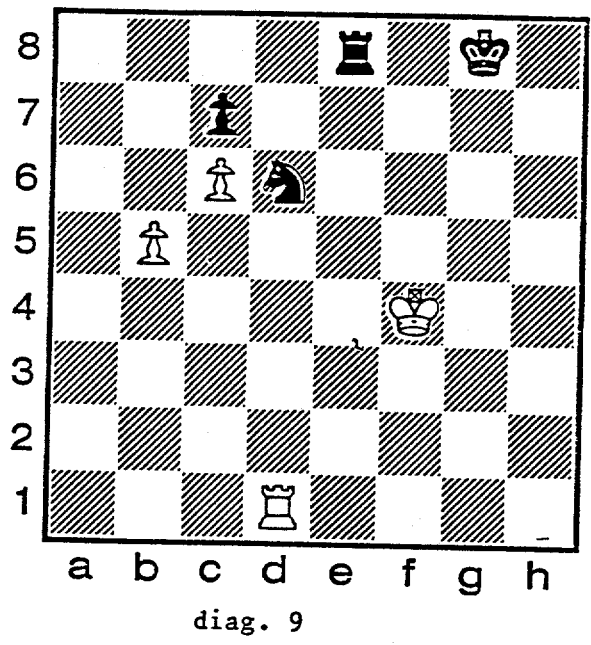
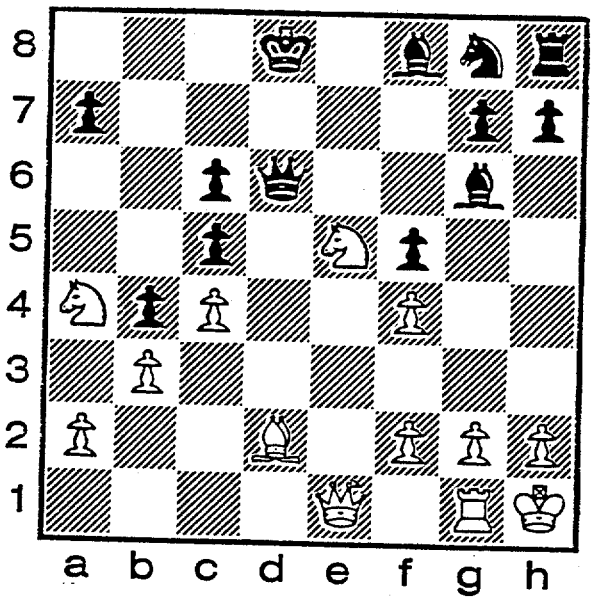
26. Qd2

I saw that Black also wins a piece after 26. B:b7 R:e2
27. B:a8 R:e1ch 28. R:e1 B:d4ch
29. K-any R:a8.

26. ... R:e1 ch

Mr. David Green of the Argonne ROOKS writes in pointing out that in a game published in bulletin 8 (May 1989), mate on the move was missed by the eventual winner. In the game Fridrich vs. Brotsos, David points out that instead of 24. ... B:f3 dis ch winning a knight, Black could have won the king with 24. ... N:g2 mate! Well, David, sometimes in the heat of the battle, strange things happen. It has been my own experience that you can see more from the side of board. - M.F.

The 2 Squares Columns Marv Cox
 "If two (or more) squares are attacked more times they are defended they may fall."



What do we have here that we can apply two-squares theory to? On the line a3 to f8 white attacks the squares b4 and c5 three times and black has only two defenders. Further, if the pawns on b4 and c5 were removed then white could win black's bishop (f8) by placing his own bishop on b4 since black can not retake because of the knight fork on c6. Therefore against the squares b4, c5, and c6 white has 4 attacks and black has 2 defenders. This gives white the inspiration to win a couple of pawns.

- 1. N x p(c5) q x N(c5)
- 2. B x p(b4) black dare not retake so white further captures at f8.

In diagram 9 above we see the white pawn on b5 threatens to move to b6 to form "2 united unattacked pawns on the 6th are stronger than a rook." The defense against this is the black pawn on c7. Also the square d6 is attacked once and defended by that same pawn on c7. Thus the 2 squares b6 and d6 are attacked a total of twice and guarded only once, and so may fall.

- 1. R x n p x R (Could r-b8 obtain a draw? No.)
 - 2. p - b6 wins
- Note that 1. P-b6 p x P
 2. R x n is inferior

My uncle said an overloaded piece is one of the several failed defenses against a 2-squares attack.

FINAL STANDINGS

NORTH DIVISION 05/29/89

TEAM NAME	W	L	D	GAME MATCH		PCT
				POINTS	POINTS	
MOTOROLA	7	1	2	39.5	8.0	0.800
EXCALIBURS	7	3	0	40.5	7.0	0.700
UOP PROCESS DIV.	6	3	1	36.5	6.5	0.650
KEMPER INSURANCE	4	6	0	24.0	4.0	0.400
EXEMPLARS	3	6	1	23.5	3.5	0.350
FEL-PRO	1	9	0	11.0	1.0	0.100

EAST DIVISION 05/29/89

TEAM NAME	W	L	D	GAME MATCH		PCT
				POINTS	POINTS	
ALUMNI CENTRAL	9	1	0	48.5	9.0	0.900
SEARS	7	2	1	41.5	7.5	0.750
CHICAGO POST OFFICE	6	3	1	35.0	6.5	0.650
CONTINENTAL BANK	3	6	1	21.0	3.5	0.350
AMOCO CORP.	2	7	1	21.0	2.5	0.250
CHICAGO MERC. EXCH.	1	9	0	12.0	1.0	0.100

NEAR WEST DIVISION 05/29/89

TEAM NAME	W	L	D	GAME MATCH		PCT
				POINTS	POINTS	
ARGONNE KNIGHTS	10	0	0	46.5	10.0	1.000
BELL LABS DRAGONS	6	3	2	37.0	7.0	0.636
AT&T CHARGERS	5	4	2	34.5	6.0	0.545
BELL LABS ROYALS	4	5	0	27.0	4.0	0.444
J. I. CASE	3	6	0	22.0	3.0	0.333
ROCKWELL INT'L	1	5	3	21.0	2.5	0.278
A & B RADIO	1	7	1	16.0	1.5	0.167

FAR WEST DIVISION 05/29/89

TEAM NAME	W	L	D	GAME MATCH		PCT
				POINTS	POINTS	
FERMILAB	8	1	1	42.5	8.5	0.850
BELL LABS INDIANS	7	2	1	36.0	7.5	0.750
WHEATON COLLEGE	5	3	2	34.0	6.0	0.600
AMOCO RESEARCH LABS	3	5	2	30.5	4.0	0.400
ARGONNE ROOKS	1	7	2	19.0	2.0	0.200
TELLABS	2	8	0	18.0	2.0	0.200

ALUMNI PLAYOFF DIVISION 05/30/89

TEAM NAME	W	L	D	GAME MATCH		PCT
				POINTS	POINTS	
EXCALIBURS	2	0	0	7.5	2.0	1.000
ALUMNI CENTRAL	1	1	0	6.0	1.0	0.500
EXEMPLARS	0	2	0	3.5	0.0	0.000

PLAYOFF DIVISION 05/30/89

TEAM NAME	W	L	D	GAME MATCH		PCT
				POINTS	POINTS	
ARGONNE KNIGHTS	2	0	1	12.0	2.5	0.833
SEARS	1	0	2	10.5	2.0	0.667
FERMILAB	1	0	2	10.5	2.0	0.667
BELL LABS DRAGONS	1	1	1	9.5	1.5	0.500
CHICAGO POST OFFICE	1	1	1	8.0	1.5	0.500
MOTOROLA	1	2	0	8.0	1.0	0.333
BELL LABS INDIANS	1	2	0	7.0	1.0	0.333
UOP PROCESS DIV.	0	2	1	6.5	0.5	0.167

26-APR-89 A & B RADIO

ROUND 11 BD

			3.5	J. I. CASE		2.5
	RATINGS	SCORE			RATINGS	SCORE
1 LASKY, N	1444	31	1	SATTERLEE, D	1580-31	0
2 O'DELL, DW	1461	30	1	WHITE, H	1590-30	0
3 LASKY, J	1367-20		0	KLINEFELTER, H	1413 20	1
4 HUMPF, R	1348-34		0	TOGAMI, F	1154 34	1
5 MIKULECKY, B	1396	7	1	CARTER, D	1102 -7	0
6 WEISNER, T	1122	7	.5	RAVANAM, S	1227 -7	.5

28-APR-89 AMOCO RESEARCH LABS

ROUND 10 BD

			6	TELLABS		0
	RATINGS	SCORE			RATINGS	SCORE
1 SAJKOWSKI, D	1827	0	1F		0 0	0F
2 NAGLE, M	1856	0	1F		0 0	0F
3 ROSE, K	1735	0	1F		0 0	0F
4 HOLM, B	1680	0	1F		0 0	0F
5 THOMPSON, M	1371	0	1F		0 0	0F
6 PULTS, J	0	0	1F		0 0	0F

11-MAY-89 AT&T CHARGERS

ROUND 12 BD

			1.5	BELL LABS DRAGONS		4.5
	RATINGS	SCORE			RATINGS	SCORE
1 WARREN, J	2032	2	.5	TEGEL, F	2090 -2	.5
2 MARCOWKA, R	1921	0	1	BORUM, J	0 0	0
3 STOLTZ, B	1832-19		0	CHRISTIAN, R	1890 19	1
4 KUMRO, D	1673 -9		0	JACOBS, N	1813 9	1
5 DOBR, K	1482 -5		0	BHOJWANI, C	1767 7	1
6 THOMAS, J	1551-34		0	BRANDT, W	1361 34	1
7 RADAVICIUS, E	1552	6	1	SHEU, G	1301 -9	0
8 SHAFF, R	1461	0	1	NWABUDE, O	0 0	0

04-MAY-89 EXCALIBURS

ROUND 1 BD		3.5 EXEMPLARS		1.5	
	RATINGS	SCORE		RATINGS	SCORE
1 LEONG, G	1968	0	OF	WONG, P	2118 0
2 SULLIVAN, J	1846	15	1	KRAKAU, H	1857-23 0
3 KARLOVICS, S	1752	-11	0	SCHULMAN, R	1851 11 1
4 ANDERSON, N	1697	0	.5	SKULSKI, I	1704 -1 .5
5 CHAN, H	1580	16	1	BURIAN, D	1480-16 0
6 BROTSOS, J	1554	0	1F		0 0 0 OF

20-MAY-89 ALUMNI CENTRAL

ROUND 2 BD		2 EXCALIBURS		4	
	RATINGS	SCORE		RATINGS	SCORE
1 GELBART, S	2207	-36	0	LEONG, G	1968 36 1
2 CZERNIECKI, A	2189	-24	0	BUERGER, E	1931 24 1
3 COX, M	1883	-24	0	SULLIVAN, J	1861 16 1
4 JASAITIS, A	1913	12	1	KARLOVICS, S	1741 -8 0
5 FABIJONAS, R	1693	-15	0	ANDERSON, N	1697 15 1
6 LITVINAS, A	1676	17	1	CHAN, H	1596-17 0
7 FRANEK, M	1730	12	1	BROTSOS, J	1554 -8 0

20-MAY-89 EXEMPLARS

ROUND 3 BD		2 ALUMNI CENTRAL		4	
	RATINGS	SCORE		RATINGS	SCORE
1 WONG, P	2118	2	.5	CZERNIECKI, A	2165 -2 .5
2 CREWSE, L	1943	21	1	JASAITIS, A	1925-21 0
3 SCHULMAN, R	1862	0	.5	COX, M	1859 1 .5
4 SKULSKI, I	1703	0	OF	LITVINAS, A	1693 0 1F
5 BURIAN, D	1464	-10	0	FABIJONAS, R	1678 7 1
6	0	0	OF	FRANEK, M	1742 0 1F

05-MAY-89 ARGONNE KNIGHTS

ROUND 1 BD		4.5 BELL LABS INDIANS		1.5	
	RATINGS	SCORE		RATINGS	SCORE
1 LEVINE, D	2272	27	1	CHACHERE, L	2335-27 0
2 BOLDEN, D	2066	19	1	LUDWIG, T	2007-19 0
3 BENEDEK, R	2049	-9	.5	STINSON, M	1824 13 .5
4 YOUNG, C	1840	0	1F	OGASAWARA, L	1728 0 OF
5 BAURAC, D	1660	-3	.5	BLACKMON, E	1578 6 .5
6 HILL, R	1375	10	.5	SHACHTER, J	1527-10 .5

10-MAY-89 FERMILAB

ROUND 1 BD		3 UOP PROCESS DIV.		3	
	RATINGS	SCORE		RATINGS	SCORE
1 KOZLOVSKY, M	0	0	0	STEVANOVIC, M	2121 0 1
2 MOTTA, H	1999	-39	0	MICKLICH, F	1660 39 1
3 SPIEGEL, L	1923	6	1	BRIONES, M	1582 -6 0
4 KALIHHER, C	1762	11	1	SAJBEL, P	1567-11 0
5 GAINES, I	1658	-24	0	STUHLBARG, D	1414 36 1
6 DORRIES, T	0	0	1	CHEVERESAN, S	1372 0 0

15-MAY-89 MOTOROLA

ROUND 1 BD		5 CHICAGO POST OFFICE		1	
	RATINGS	SCORE		RATINGS	SCORE
1 MCNEIL, B	2062	29	1	INUMERABLE, F	2160-29 0
2 BLOOM, B	1948	-11	0	GREGORY, J	2142 11 1
3 EASTER, R	2002	6	1	COOPER, W	1687 -6 0
4 CIESLEK, D	1827	13	1	REED, L	1671-13 0
5 GONCHAROFF, N	1693	4	1	CARTER, L	1477-10 0
6 FAHRENHOLTZ, S	1616	16	1	PETWAY, L	1520-16 0
7 GRYPARIS, J	1432	0	1	HOWARD, W	0 0 0

18-MAY-89 SEARS			4.5	BELL LABS DRAGONS	1.5
ROUND 1 BD	RATINGS	SCORE		RATINGS	SCORE
1 GILES, M	2505	4 1		2088	-2 0
2 REYES, R	2195	10 1		2064	-14 0
3 LATIMER, E	1930	-1 .5		1909	2 .5
4 GOLLA, R	1870	-2 .5		1822	2 .5
5 SCHWARTZ, S	1634	-1 .5		1622	1 .5
6 DENMARK, T	1572	32 1		1736	-32 0

20-MAY-89 MOTOROLA			1.5	ARGONNE KNIGHTS	4.5
ROUND 2 BD	RATINGS	SCORE		RATINGS	SCORE
1 EASTER, R	2008	38 1		2299	-38 0
2 CIESLEK, D	1840	-9 0		2085	9 1
3 GONCHAROFF, N	1697	-2 0		2040	4 1
4 FAHRENHOLTZ, S	1632	0 OF		1840	0 1F
5 OGASAWARA, R	1535	5 .5		1657	-5 .5
6 BRYPARIS, J	1432	-26 0		1385	26 1

20-MAY-89 FERMILAB			3	SEARS	3
ROUND 2 BD	RATINGS	SCORE		RATINGS	SCORE
1 KOZLOVSKY, M	0	0 .5		2509	0 .5
2 MOTTA, H	1960	-9 0		2205	6 1
3 SAGALOVSKY, L	1949	-2 .5		1929	1 .5
4 SPIEGEL, L	1929	19 1		1868	-12 0
5 GAINES, I	1634	0 .5		1633	0 .5
6 MANE, S	0	0 .5		1604	0 .5

20-MAY-89 UOP PROCESS DIV.			2.5	BELL LABS INDIANS	3.5
ROUND 2 BD	RATINGS	SCORE		RATINGS	SCORE
1 STEVANOVIC, M	2121	-11 0		2308	11 1
2 MICKLICH, F	1699	-7 0		1988	7 1
3 BRIONES, M	1576	-8 0		1837	8 1
4 SAJBEL, P	1556	11 .5		1728	-11 .5
5 STUHLBARG, D	1450	0 1F		0	0 OF
6 CHEVERESAN, S	1372	0 1F		0	0 OF
7 STUHLBARG, D	1450	0 .5		0	0 .5 (DRGNS)

20-MAY-89 CHICAGO POST OFFICE			3	BELL LABS DRAGONS	3
ROUND 2 BD	RATINGS	SCORE		RATINGS	SCORE
1 GREGORY, J	2153	16 1		2050	-16 0
2 INUMERABLE, F	2131	10 1		1911	-10 0
3 COOPER, W	1681	-14 0		1824	9 1
4 REED, L	1658	-15 0		1774	15 1
5 CARTER, L	1467	32 1		1623	-21 0
6 HOWARD, W	0	0 0		1395	0 1

20-MAY-89 MOTOROLA			1.5	FERMILAB	4.5
ROUND 3 BD	RATINGS	SCORE		RATINGS	SCORE
1 EASTER, R	2046	0 0		0	0 1
2 CIESLEK, D	1831	30 1		1951	-30 0
3 GONCHAROFF, N	1695	-4 0		1947	9 1
4 OGASAWARA, R	1540	12 .5		1948	-19 .5
5 BRYPARIS, J	1406	-10 0		1634	6 1
6	0	0 OF		0	0 1F

20-MAY-89 BELL LABS INDIANS

ROUND 3 BD

	RATINGS	SCORE
1 CHACHERE, L	2319-33	0
2 LUDWIG, T	1995 11	.5
3 STINSON, M	1845 12	1
4 OGASAWARA, L	1717-13	.5
5	0 0	OF
6	0 0	OF
(DRGNS) 7 WHITSITT, S	0 0	1

CHICAGO POST OFFICE

	RATINGS	SCORE
INUMERABLE, F	2141 33	1
GREGORY, J	2169-11	.5
COOPER, W	1667-12	0
CARTER, L	1499 13	.5
REED, L	1643 0	1F
HOWARD, W	0 0	1F
REED, L	1643 0	0

20-MAY-89 BELL LABS DRAGONS

ROUND 3 BD

	RATINGS	SCORE
1 BORUM, J	2034-18	0
2 CHRISTIAN, R	1901 10	1
3 JACOBS, N	1833 5	1
4 BHOJWANI, C	1789 6	1
5 WARD, C	1602 6	1
6 BRANDT, W	1395 0	1F

UOP PROCESS DIV.

	RATINGS	SCORE
STEVANOVIC, M	2110 12	1
MICKLICH, F	1692-10	0
SAJBEL, P	1567 -8	0
STUHLBARG, D	1450 -6	0
CHEVERESAN, S	1372 -9	0
	0 0	OF

20-MAY-89 ARGONNE KNIGHTS

ROUND 3 BD

	RATINGS	SCORE
1 LEVINE, D	2261 36	1
2 BOLDEN, D	2094 8	.5
3 BENEDEK, R	2044 10	1
4 YOUNG, C	1840-14	0
5 BAURAC, D	1652 -1	.5
6 HILL, R	1411-11	0

SEARS

	RATINGS	SCORE
GILES, M	2509-36	0
REYES, R	2211 -5	.5
LATIMER, E	1930-10	0
GOLLA, R	1856 14	1
SCHWARTZ, S	1633 1	.5
DENMARK, T	1604 11	1

ALUMNI CENTRAL

NAME	RATING	SEASON			RATING CHANGE	TOTAL GAMES	RATED GAMES
		W	L	D			
GELBART, S	2171	0	3	0	-53	14	14
CZERNIECKI, A	2163C	7	2	2	-10	136	129
KRAS, T	2152	3	1	2	-12	62	58
JAKSTAS, K	2033	1	0	0	2	82	80
HUTTAR, C	1946	0	0	1	-17	28	26
WIRTSCHAFTER, D	1945	1	2	0	-73	54	44
JASAITIS, A	1904	6	2	1	-24	67	58
COX, M	1860	2	2	1	-47	100	83
FRIESEMA, W	1838#	5	0	0	0	6	5
RZESZUTKO, R	1813	5	0	1	4	57	44
FRANEK, M	1742	9	0	0	19	71	53
BRONFELD, A	1732	1	0	0	0	12	11
LITVINAS, A	1693C	6	0	1	9	115	85
FABIJONAS, R	1685D	2	1	0	-8	211	189

CONTINENTAL BANK

NAME	RATING	SEASON			RATING CHANGE	TOTAL GAMES	RATED GAMES
		W	L	D			
FRAATS, D	1751	2	7	0	10	19	18
SOMBONG, M	1722	0	0	1	9	51	47
PARADAN, E	1688	3	3	3	59	50	45
MYERS, W	1522*	0	2	0	-20	25	21
SIEGEL, R	1443	3	4	2	4	59	46
HAMMOND, M	1273*	1	4	0	31	18	10
ZOELLNER, J	1153	2	4	2	-27	53	28
AYALA, M	0000?	2	4	0	0	6	4
HOPSON, A	0000?	0	1	0	0	8	4
PATEL, R	0000?	1	3	0	0	5	3
SALGANIK, E	0000?	0	1	0	0	1	0
WILLIAMSON, E	0000?	0	1	0	0	1	0

SEARS

NAME	RATING	SEASON			RATING CHANGE	TOTAL GAMES	RATED GAMES
		W	L	D			
GILES, M	2473	10	1	1	2	24	23
REYES, R	2206C	3	0	3	9	178	160
LATIMER, E	1920C	6	4	3	-11	206	177
GOLLA, R	1870C	8	1	1	54	179	157
BROCKETT, M	1739	3	1	0	39	9	6
SCHWARTZ, S	1634C	0	1	5	-5	168	138
DENMARK, T	1615*	6	3	1	-9	15	11
CHERNOMORDIKOW	1581*	2	1	1	-37	31	22
CIBA, F	1401	1	0	0	0	71	56
VAN METRE, R	0000?	3	3	1	0	7	3

AMOCO CORP.

NAME	RATING	SEASON			RATING CHANGE	TOTAL GAMES	RATED GAMES
		W	L	D			
WEIHMILLER, W	1844	0	7	1	-129	78	71
SMILEY, R	1747	0	6	3	-111	17	17
ATKINSON, J	1729	4	2	2	50	58	45
SOPRYCH, T	1590	3	4	2	46	82	60
WENTLING, C	1512	3	4	1	-25	56	41
CAMPBELL, C	1164	3	4	0	21	61	35
CLEMONS, V	0000?	1	0	1	0	2	0
COOPER, J	0000?	1	5	0	0	8	3
WINBORN, G	0000?	0	2	0	0	2	1

CHICAGO MERC. EXCH.

NAME	RATING	SEASON			RATING CHANGE	TOTAL GAMES	RATED GAMES
		W	L	D			
ZEIDEL, J	1872	2	5	2	12	9	9
DIXON, R	1571	1	4	0	-44	22	19
RUDY, J	1238#	1	6	1	0	8	6
GAVIN, L	1225*	3	6	0	73	20	14
BROSKA, P	0000?	2	7	0	0	9	4
FRANTZIS, G	0000?	0	1	1	0	2	0
GLEICH, S	0000?	0	7	0	0	7	6
HILTON, J	0000?	1	5	0	0	6	1
MCLAURIN, J	0000?	0	3	0	0	3	3

CHICAGO POST OFFICE

NAME	RATING	SEASON			RATING CHANGE	TOTAL GAMES	RATED GAMES
		W	L	D			
INUMERABLE, F	2174	8	4	0	-4	18	18
GREGORY, J	2158	6	1	1	52	14	14
COOPER, W	1655*	4	7	2	13	23	22
REED, L	1643#	2	3	1	-28	8	7
CARTER, L	1512*	5	6	1	71	22	16
PETWAY, L	1504#	6	3	1	7	12	8
HATCHER, W	1025#	0	1	0	0	5	5
FELICIANO, H	0000?	1	0	0	0	1	0
HOWARD, W	0000?	6	4	0	0	11	5
NELSON, B	0000?	0	2	0	0	2	2
PEREZ, M	0000?	0	0	0	0	0	0

FEL-PRO

NAME	RATING	SEASON			RATING CHANGE	TOTAL GAMES	RATED GAMES
		W	L	D			
WEITZ, R	1750	2	6	1	43	94	85
HESS, B	1485	0	2	0	-29	27	27
CRUZ, R	1402*	0	1	0	-6	19	18
FELDMAN, A	1392	1	8	1	-1	73	69
PETERS, P	1161#	0	6	1	-41	8	7
THOMPSON, R	1058	1	3	0	4	43	31
BAKER, B	1057	1	8	1	18	50	40
DAVIS, J	0000?	0	0	0	0	0	0
FRIEDMAN, S	0000?	0	0	0	0	0	0
PETERS, B	0000?	0	0	0	0	0	0

KEMPER INSURANCE

NAME	RATING	SEASON			RATING CHANGE	TOTAL GAMES	RATED GAMES
		W	L	D			
SIWEK, M	1920	2	3	3	-57	77	70
HUGHES, N	1703	6	2	2	62	93	86
GARLAND, G	1643	2	7	0	-56	50	48
BLOEDOW, P	1377	2	4	2	-22	98	88
CUMMUTA, P	1267	0	3	1	-8	71	47
CAGNEY, D	0000?	0	3	0	0	8	7
VAN HOORN, G	0000?	2	2	0	0	4	4
VAN HOORN, G	0000?	2	2	0	0	4	4

EXCALIBURS

NAME	RATING	SEASON			RATING CHANGE	TOTAL GAMES	RATED GAMES
		W	L	D			
LEONG, G	2004C	4	3	2	11	114	96
BUERGER, E	1955C	6	3	1	26	203	173
SULLIVAN, J	1877C	9	2	1	45	184	178
KARLOVICS, S	1733C	4	2	2	-11	128	115
ANDERSON, N	1712C	5	1	4	-6	153	128
CHAN, H	1579	4	4	0	-51	73	57
BROTSOS, J	1546C	6	2	0	7	199	169

MOTOROLA

NAME	RATING	SEASON			RATING CHANGE	TOTAL GAMES	RATED GAMES
		W	L	D			
MCNEIL, B	2091	1	1	0	7	77	71
EASTER, R	2046	8	2	1	47	11	10
BLOOM, B	1937	3	5	1	-6	24	24
CIESLEK, D	1861*	3	3	1	-39	16	15
GONCHAROFF, N	1691D	4	4	2	7	385	334
FAHRENHOLTZ, S	1632#	2	0	0	22	10	7
KNOX, M	1630	2	1	0	-14	3	3
GREENSPAN, P	1573C	1	0	0	9	158	147
OGASAWARA, R	1552D	2	1	4	38	231	214
FRIDRICH, C	1409#	2	2	0	6	10	9
GRYPARIS, J	1396	7	4	2	52	61	35
KHOKHA, D	0000?	0	1	0	0	2	1

EXEMPLARS

NAME	RATING	SEASON			RATING CHANGE	TOTAL GAMES	RATED GAMES
		W	L	D			
WONG, P	2120C	6	1	1	34	129	124
CREWSE, L	1964	2	3	0	-60	49	49
SCHULMAN, R	1862C	3	0	3	11	164	156
KRAKAU, H	1834	1	2	0	-32	47	43
SKULSKI, I	1703	2	1	4	24	67	65
SUERTH, F	1582	1	3	1	-40	79	73
BURIAN, D	1454	4	7	0	-21	74	61
EDWARDS, S	1259	0	2	1	-10	53	42

UOP PROCESS DIV.

NAME	RATING	SEASON			RATING CHANGE	TOTAL GAMES	RATED GAMES
		W	L	D			
STEVANOVIC, M	2122	10	2	1	56	108	102
MICKLICH, F	1682	5	7	1	55	96	86
BRIONES, M	1568	4	7	0	22	95	89
SAJBEL, F	1559*	6	4	2	96	21	20
STUHLBARG, D	1444C	5	3	2	18	113	98
GRAF, R	1416*	2	0	0	0	27	23
CHEVERESAN, S	1363	3	7	1	-77	88	60
VAN ZILE, C	0000?	0	2	0	0	2	2

BELL LABS ROYALS

NAME	RATING	SEASON			RATING CHANGE	TOTAL GAMES	RATED GAMES
		W	L	D			
GUID, J	2056	4	2	1	21	7	7
CHEN, M	1859#	5	4	0	0	9	9
ROSLEY, D	1692	2	2	1	6	23	21
HAHNE, D	1545	6	2	1	146	29	25
HICKS, C	1463*	4	3	1	76	25	21
ANDERSON, CJ	0000?	1	5	0	0	8	4
REVULURI, K	0000?	2	3	0	0	6	4

A & B RADIO

NAME	RATING	SEASON			RATING CHANGE	TOTAL GAMES	RATED GAMES
		W	L	D			
O'DELL, DW	1491	5	2	1	123	65	56
LASKY, N	1475	1	5	1	31	64	55
MCGRIFF, M	1467*	0	6	0	-15	17	15
MIKULECKY, B	1403	5	4	0	36	70	61
LASKY, J	1347	2	5	1	-10	35	29
HUMPF, R	1314*	0	7	0	-130	21	20
WEISNER, T	1129	1	4	1	-46	52	35
DASBACH, D	0000?	0	1	0	0	1	0
LASKY, JIM	0000?	0	2	0	0	4	4

ARGONNE KNIGHTS

NAME	RATING	SEASON			RATING CHANGE	TOTAL GAMES	RATED GAMES
		W	L	D			
LEVINE, D	2297	5	2	1	-7	28	23
BOLDEN, D	2102	8	1	3	37	47	38
BENEDEK, R	2054C	9	0	3	11	188	182
YOUNG, C	1826C	7	2	2	1	143	135
BAURAC, D	1651C	6	1	6	1	134	117
KELLOGG, K	1579C	4	1	0	-3	162	146
BURBA, K	1417C	1	1	1	20	131	112
HILL, R	1400*	6	4	2	42	16	13

BELL LABS DRAGONS

NAME	RATING	SEASON			RATING CHANGE	TOTAL GAMES	RATED GAMES
		W	L	D			
TEGEL, F	2086D	6	3	3	16	244	211
BORUM, J	2016	0	5	0	-48	6	6
CHRISTIAN, R	1911	7	3	4	38	103	91
JACOBS, N	1838C	5	3	3	-10	146	142
BHOJWANI, C	1795	7	3	1	-44	79	75
DURKEE, D	1704	1	2	0	-70	94	87
WARD, C	1608C	5	3	4	-32	199	187
BRANDT, W	1395*	4	2	1	31	19	17
SHEU, G	1292*	2	6	0	-43	15	11
MATHUR, P	1283#	2	4	1	-26	9	7
NWABUDE, O	0000?	0	3	0	0	3	3
WHITSITT, S	0000?	6	2	1	0	9	4

AT&T CHARGERS

NAME	RATING	SEASON			RATING CHANGE	TOTAL GAMES	RATED GAMES
		W	L	D			
WARREN, J	2034D	2	2	2	-13	344	297
WHEATLEY, D	1949	2	3	0	-18	23	21
MARCOWKA, R	1921C	5	2	2	29	121	104
STOLTZ, B	1813	1	1	0	5	32	28
BROZOVICH, J	1684C	0	1	0	-10	173	151
KUMRO, D	1664D	4	6	0	-27	265	244
FAJKUS, J	1582C	1	0	0	4	151	141
RADAVICIUS, E	1558C	6	3	2	-19	171	143
THOMAS, J	1517C	5	2	1	-14	113	81
DOBR, K	1477D	4	6	1	-46	277	253
SHAFF, R	1461C	5	1	1	-19	128	99

ROCKWELL INT'L

NAME	RATING	SEASON			RATING CHANGE	TOTAL GAMES	RATED GAMES
		W	L	D			
JONES, B	2027*	3	1	2	1	23	23
SAMELSON, C	1816	3	3	3	-4	93	88
RAFACZ, W	1480#	3	5	1	6	9	8
MCQUINN, J	1477	1	1	0	17	42	37
RAFACZ, T	1444	2	6	1	-36	46	40
EFRON, D	1414*	2	5	0	-32	20	18
DEWITT, G	1309	3	5	1	-50	83	71
DEZONNO, T	0000?	0	2	0	0	7	3

J. I. CASE

NAME	RATING	SEASON			RATING CHANGE	TOTAL GAMES	RATED GAMES
		W	L	D			
WHITE, H	1560	3	4	1	17	12	12
SATTERLEE, D	1549	2	6	1	-36	82	75
KLINEFELTER, H	1433	4	5	0	31	37	30
SAWDO, E	1430	0	3	0	-16	33	30
JACKLIN, E	1288	1	0	0	0	31	26
KANAS, W	1253	1	5	0	-12	86	71
REID, C	1244*	1	3	1	27	18	16
RAVANAM, S	1220*	0	0	2	4	30	22
TOGAMI, P	1188*	4	2	0	131	19	14
CARTER, D	1095*	1	2	0	-9	19	18

AMOCO RESEARCH LABS

NAME	RATING	SEASON			RATING CHANGE	TOTAL GAMES	RATED GAMES
		W	L	D			
NAGLE, M	1856	2	5	1	-42	30	29
SAJKOWSKI, D	1827	6	2	1	119	28	25
ROSE, K	1735	2	4	2	-20	19	18
HOLM, B	1680	3	1	2	47	85	75
BOOTH, D	1406	0	3	1	-37	16	11
THOMPSON, M	1371*	2	4	2	9	16	15
RINGENBERG, T	1324*	0	2	0	-38	23	17
FULTS, J	0000?	2	0	1	0	3	2
ZHANG, L	0000?	1	3	0	0	4	3

ARGONNE ROOKS

NAME	RATING	SEASON			RATING CHANGE	TOTAL GAMES	RATED GAMES
		W	L	D			
BERRY, G	1939D	4	5	1	13	248	203
DECMAN, S	1713C	2	6	2	-4	165	142
GREEN, D	1688C	4	3	3	25	135	116
ZAROMB, S	1473*	2	3	0	28	33	24
WALSH, W	1467C	2	1	0	3	123	114
BINGLE, J	1465C	0	2	0	-7	176	139
TASKER, I	1434*	0	2	0	-7	16	13
WIENCEK, T	1252*	0	2	0	-7	35	17
REDEY, E	1037*	2	2	0	-15	28	16

BELL LABS INDIANS

NAME	RATING	SEASON			RATING CHANGE	TOTAL GAMES	RATED GAMES
		W	L	D			
CHACHERE, L	2286	4	4	0	-77	8	7
LUDWIG, T	2006	6	3	2	11	64	62
STINSON, M	1857	6	1	5	87	74	71
OGASAWARA, L	1704	2	1	3	-32	56	54
CHURCHILL, W	1664	1	4	1	-80	19	18
BLACKMON, E	1584	4	3	4	2	49	38
SHACHTER, J	1517	3	1	4	1	42	33
EUSTACE, D	1327*	4	1	1	54	19	12
HAI, N	0000?	1	1	0	0	2	1
ROBERTS, R	0000?	0	0	0	0	0	0
TURPIN, S	0000?	0	1	0	0	7	4

WHEATON COLLEGE

NAME	RATING	SEASON			RATING CHANGE	TOTAL GAMES	RATED GAMES
		W	L	D			
WALHOUT, P	1956	3	3	3	33	23	22
UNDERWOOD, W	1906C	3	2	4	-26	114	95
WALLIN, R	1664*	2	3	2	-53	19	19
AUGSBURGER, L	1631*	6	1	1	91	29	21
WALKER, P	1600	2	5	1	-31	40	37
WIENS, P	1376	3	3	1	31	18	11
COUGHLIN, B	0000?	0	1	0	0	1	0
RDTH, K	0000?	1	0	0	0	1	0
SATCHELL, E	0000?	0	4	0	0	4	3
TAYLOR, F	0000?	1	4	0	0	9	3

FERMILAB

NAME	RATING	SEASON			RATING CHANGE	TOTAL GAMES	RATED GAMES
		W	L	D			
KOZLOVSKY, M	2264#	2	1	2	0	5	5
SAGALOVSKY, L	1956	5	4	1	10	34	34
SPIEGEL, L	1929	9	1	2	50	84	76
MOTTA, H	1921	3	6	0	-114	31	31
KALIHER, C	1773	8	2	0	34	42	33
FACE, M	1754	0	0	1	0	1	0
GAINES, I	1640C	5	3	2	-45	136	128
SUMMERS, D	1388*	3	2	0	-21	16	13
WALKER, R	1369C	1	0	0	0	138	116
BERTOLUCCI, S	0000?	1	0	0	0	3	2
DORRIES, T	0000?	6	1	0	0	7	6
MANE, S	0000?	1	0	3	0	4	2

TELLABS

NAME	RATING	SEASON			RATING CHANGE	TOTAL GAMES	RATED GAMES
		W	L	D			
STEIN, P	2076	4	3	1	-70	27	27
GRAFT, D	1708	2	4	2	-24	81	74
VERIVE, J	1543#	1	0	2	8	11	6
TENNIE, E	1456#	1	3	0	-46	7	7
ERLENBORN, M	1427*	3	0	1	64	21	10
MCKEE, M	1389*	0	5	2	-19	11	11
STELTON, N	1372	0	4	0	-25	50	38
JOHNSON, R	0000?	0	1	0	0	1	1
LAY, K	0000?	0	1	0	0	1	1
O'DONOHUE, D	0000?	0	1	0	0	1	1

NAME	TEAM	W	L	D	RATING	NAME	TEAM	W	L	D	RATING
ABSIL, K	UOP	0	0	0	1270#	CHOU, S	WHEAT	0	0	0	0000?
AGGEN, R	CONBK	0	0	0	0000?	CHRISTIAN, R	DRGNS	7	3	4	1911
ANDERSON, CJ	ROYLS	1	5	0	0000?	CHURCHILL, W	INDNS	1	4	1	1664
ANDERSON, MARK	ATTSK	0	0	0	1301*	CIBA, F	SEARS	1	0	0	1401
ANDERSON, N	EXCAL	5	1	4	1712C	CIESLEK, D	MTRLA	3	3	1	1861*
ANGLIN, B	SEARS	0	0	0	1592*	CIPOLLA, J	MTRLA	0	0	0	1614*
ATKINSON, J	AMCRP	4	2	2	1729	CLAY, M	FLPRO	0	0	0	0000?
AUGSBURGER, L	WHEAT	6	1	1	1631*	CLEMONS, V	AMCRP	1	0	1	0000?
AYALA, M	CONBK	2	4	0	0000?	COKER, D	CONBK	0	0	0	0000?
BAKER, B	FLPRO	1	8	1	1057	COLTER, D	JCASE	0	0	0	0000?
BARTALONE, F	FLPRO	0	0	0	0000?	COOPER, J	AMCRP	1	5	0	0000?
BAURAC, D	KNIGHT	6	1	6	1651C	COOPER, K	MTRLA	0	0	0	0000?
BECKLEY, S	INDNS	0	0	0	1268#	COOPER, W	PSTOF	4	7	2	1655*
BENEDEK, R	KNIGHT	9	0	3	2054C	CORBIN, Z	AMCRP	0	0	0	1321#
BERRY, G	ROOKS	4	5	1	1939D	COUGHLIN, B	WHEAT	0	1	0	0000?
BERTOLUCCI, S	FERMI	1	0	0	0000?	COX, M	ALUMN	2	2	1	1860
BEUNING, B	INDNS	0	0	0	1329*	CREWSE, L	EXMPL	2	3	0	1964
BHOJWANI, C	DRGNS	7	3	1	1795	CRUZ, R	FLPRO	0	1	0	1402*
BINGLE, J	ROOKS	0	2	0	1465C	CUMMUTA, P	KEMPR	0	3	1	1267
BLACKMON, E	INDNS	4	3	4	1584	CZERNIECKI, A	ALUMN	7	2	2	2163C
BLAZIE, J	TYROS	0	0	0	1587	DASBACH, D	RADIO	0	1	0	0000?
BLOCKER, C	CBOPE	0	0	0	2555	DAVIS, J	FLPRO	0	0	0	0000?
BLOEDOW, P	KEMPR	2	4	2	1377	DECMAN, S	ROOKS	2	6	2	1713C
BLOOM, B	MTRLA	3	5	1	1937	DENMARK, T	SEARS	6	3	1	1615*
BOLDEN, D	KNIGHT	8	1	3	2102	DEWITT, G	ROCKW	3	5	1	1309
BOOTH, D	AMOCO	0	3	1	1406	DEZONNO, T	ROCKW	0	2	0	0000?
BORUM, J	DRGNS	0	5	0	2016	DIXON, R	MERC	1	4	0	1571
BRADY, R	CHRGR	0	0	0	0000?	DOBR, K	CHRGR	4	6	1	1477D
BRANDT, W	DRGNS	4	2	1	1395*	DORRIES, T	FERMI	6	1	0	0000?
BRERETON, K	DRGNS	0	0	0	0000?	DOWNEY, J	CBOPE	0	0	0	0000?
BRIONES, M	UOP	4	7	0	1568	DUNWOODY, D	ROOKS	0	0	0	1549
BROCKETT, M	SEARS	3	1	0	1739	DURKEE, D	DRGNS	1	2	0	1704
BRONFELD, A	ALUMN	1	0	0	1732	EASLEY, K	INDNS	0	0	0	1688*
BROSKA, P	MERC	2	7	0	0000?	EASTER, R	MTRLA	8	2	1	2046
BROTSOS, J	EXCAL	6	2	0	1546C	EDWARDS, S	EXMPL	0	2	1	1259
BROWN, J	TYROS	0	0	0	0000?	EFRON, D	ROCKW	2	5	0	1414*
BROZOVICH, J	CHRGR	0	1	0	1684C	ERICKSON, R	PSTOF	0	0	0	1807
BUERGER, E	EXCAL	6	3	1	1955C	ERLENBORN, M	TELAB	3	0	1	1427*
BURBA, K	KNIGHT	1	1	1	1417C	EUSTACE, D	INDNS	4	1	1	1327*
BURIAN, D	EXMPL	4	7	0	1454	FABIJONAS, R	ALUMN	2	1	0	1685D
CAGNEY, D	KEMPR	0	3	0	0000?	FAHRENHOLTZ, S	MTRLA	2	0	0	1632#
CAMPBELL, C	AMCRP	3	4	0	1164	FAJKUS, J	CHRGR	1	0	0	1582C
CARPENTER, P	ATTSK	0	0	0	1390	FELDMAN, A	FLPRO	1	8	1	1392
CARTER, D	JCASE	1	2	0	1095*	FELICIANO, H	PSTOF	1	0	0	0000?
CARTER, L	PSTOF	5	6	1	1512*	FINLAY, J	AMOCO	0	0	0	0000?
CHACHERE, L	INDNS	4	4	0	2286	FISCHLER, M	FERMI	0	0	0	1352
CHAN, H	EXCAL	4	4	0	1579	FOGERTY, A	CBOPE	0	0	0	1793#
CHEN, M	ROYLS	5	4	0	1859#	FONNEMAN, J	AMOCO	0	0	0	0000?
CHERNOMORDIKOW	SEARS	2	1	1	1581*	FRAATS, D	CONBK	2	7	0	1751
CHEVERESAN, S	UOP	3	7	1	1363	FRANEK, M	ALUMN	9	0	0	1742

? - UNRATED
 # - 5 TO 9 RATED GAMES
 * - 10 TO 24 RATED GAMES

C - CENTURY CLUB MEMBER
 D - DOUBLE CENTURION

NAME	TEAM	W	L	D	RATING	NAME	TEAM	W	L	D	RATING
FRANTZIS, G	MERC	0	1	1	0000?	KALIHHER, C	FERMI	8	2	0	1773
FREDERICK, M	CBOPE	0	0	0	0000?	KANAS, W	JCASE	1	5	0	1253
FRIDRICH, C	MTRLA	2	2	0	1409#	KARGE, W	KEMPR	0	0	0	1284
FRIEDMAN, S	FLPRO	0	0	0	0000?	KARLOVICS, S	EXCAL	4	2	2	1733C
FRIESEMA, W	ALUMN	5	0	0	1838#	KELLOGG, K	KNGHT	4	1	0	1579C
GAINES, I	FERMI	5	3	2	1640C	KELLY, S	ROYLS	0	0	0	1333*
GARLAND, G	KEMPR	2	7	0	1643	KHOKHA, D	MTRLA	0	1	0	0000?
GAVIN, L	MERC	3	6	0	1225*	KLINFELTER, H	JCASE	4	5	0	1433
GELBART, S	ALUMN	0	3	0	2171	KNOX, M	MTRLA	2	1	0	1630
GERNES, L	ATTSK	0	0	0	1494	KOZLOVSKY, M	FERMI	2	1	2	2264#
GILES, M	SEARS	10	1	1	2473	KRAKAU, H	EXMPL	1	2	0	1834
GLEICH, S	MERC	0	7	0	0000?	KRAS, T	ALUMN	3	1	2	2152
GOLLA, R	SEARS	8	1	1	1870C	KRULL, E	AMCRP	0	0	0	1301#
GONCHAROFF, N	MTRLA	4	4	2	1691D	KUKES, S	AMOCO	0	0	0	0000?
GORDON, D	PSTOF	0	0	0	0000?	KUMRO, D	CHRGR	4	6	0	1664D
GRAF, R	UOP	2	0	0	1416*	LANDRY, H	CBOPE	0	0	0	1178#
GRAFT, D	TELAB	2	4	2	1708	LANNOME, D	CBOPE	0	0	0	1508*
GREEN, D	ROOKS	4	3	3	1688C	LASKY, J	RADIO	2	5	1	1347
GREENSPAN, P	MTRLA	1	0	0	1573C	LASKY, JIM	RADIO	0	2	0	0000?
GREGORY, J	PSTOF	6	1	1	2158	LASKY, N	RADIO	1	5	1	1475
GRIVETTI, M	AMOCO	0	0	0	0000?	LATIMER, E	SEARS	6	4	3	1920C
GRUCHACZ, R	CBOPE	0	0	0	2491	LAY, K	TELAB	0	1	0	0000?
GRYPARIS, J	MTRLA	7	4	2	1396	LEONG, G	EXCAL	4	3	2	2004C
GUIDO, J	ROYLS	4	2	1	2056	LESTER, M	PSTOF	0	0	0	1560
HAHNE, D	ROYLS	6	2	1	1545	LEVINE, D	KNGHT	5	2	1	2297
HAI, N	INDNS	1	1	0	0000?	LITVINAS, A	ALUMN	6	0	1	1693C
HALLMAN, W	JCASE	0	0	0	1188*	LONOFF, M	CBOPE	0	0	0	2337
HAMMOND, M	CONBK	1	4	0	1273*	LUDWIG, T	INDNS	6	3	2	2006
HARRINGER, R	TYROS	0	0	0	1567C	MANASTER, R	ATTSK	0	0	0	1810
HATCHER, W	PSTOF	0	1	0	1025#	MANE, S	FERMI	1	0	3	0000?
HESS, B	FLPRO	0	2	0	1485	MANZKE, R	ATTSK	0	0	0	1129*
HICKS, C	ROYLS	4	3	1	1463*	MARCOVKA, R	CHRGR	5	2	2	1921C
HILL, R	KNGHT	6	4	2	1400*	MARTIN, W	CONBK	0	0	0	0000?
HILTON, J	MERC	1	5	0	0000?	MARTINSONS, B	MTRLA	0	0	0	1839
HOLM, B	AMOCO	3	1	2	1680	MATHUR, P	DRGNS	2	4	1	1283#
HOPSON, A	CONBK	0	1	0	0000?	MCCALLON, J	WHEAT	0	0	0	1135#
HOWARD, W	PSTOF	6	4	0	0000?	MCGRIFF, M	RADIO	0	6	0	1467*
HUGHES, N	KEMPR	6	2	2	1703	MCKEE, M	TELAB	0	5	2	1389*
HUMPF, R	RADIO	0	7	0	1314*	MCLAURIN, J	MERC	0	3	0	0000?
HUTTAR, C	ALUMN	0	0	1	1946	MCNEIL, B	MTRLA	1	1	0	2091
ILANGA, R	FLPRO	0	0	0	1899*	MCQUINN, J	ROCKW	1	1	0	1477
INUMERABLE, F	PSTOF	8	4	0	2174	MICKLICH, F	UOP	5	7	1	1682
JACKLIN, E	JCASE	1	0	0	1288	MIHAILOVICH, S	ROOKS	0	0	0	1764D
JACKSON, T	CBOPE	0	0	0	0000?	MIKULECKY, B	RADIO	5	4	0	1403
JACOBS, N	DRGNS	5	3	3	1838C	MILLER, PAUL	ATTSK	0	0	0	0000?
JAKSTAS, K	ALUMN	1	0	0	2033	MORGAN, B	FLPRO	0	0	0	0000?
JANNEY, C	SEARS	0	0	0	0000?	MOTTA, H	FERMI	3	6	0	1921
JASAITIS, A	ALUMN	6	2	1	1904	MUIR, L	AMOCO	0	0	0	1521C
JOHNSON, R	TELAB	0	1	0	0000?	MUNOZ, A	INDNS	0	0	0	1247
JONES, B	ROCKW	3	1	2	2027*	MUSGRAVE, C	EXECU	0	0	0	1878

? - UNRATED
 # - 5 TO 9 RATED GAMES
 * - 10 TO 24 RATED GAMES

C - CENTURY CLUB MEMBER
 D - DOUBLE CENTURION

NAME	TEAM	W	L	D	RATING	NAME	TEAM	W	L	D	RATING
MYERS, W	CONBK	0	2	0	1522*	SAWDO, E	JCASE	0	3	0	1430
NAGLE, M	AMOCO	2	5	1	1856	SCHOONVELD, S	WHEAT	0	0	0	1271#
NELSON, B	PSTOF	0	2	0	0000?	SCHULMAN, R	EXMPL	3	0	3	1862C
NEUMANN, J	TELAB	0	0	0	1718#	SCHWARTZ, S	SEARS	0	1	5	1634C
NWABUDE, D	DRGNS	0	3	0	0000?	SHACHTER, J	INDNS	3	1	4	1517
O'BRIEN, D	UOP	0	0	0	1409*	SHAFF, R	CHRGR	5	1	1	1461C
O'DELL, DW	RADIO	5	2	1	1491	SHELBY, J	PSTOF	0	0	0	0000?
O'DONOHUE, D	TELAB	0	1	0	0000?	SHEU, G	DRGNS	2	6	0	1292*
OGASAWARA, L	INDNS	2	1	3	1704	SHOREY, S	UOP	0	0	0	1139#
OGASAWARA, R	MTRLA	2	1	4	1552D	SIEGEL, R	CONBK	3	4	2	1443
OSTERLUND, R	EXCAL	0	0	0	1857	SIWEK, M	KEMPR	2	3	3	1920
FAAUWE, N	AMOCO	0	0	0	1386	SKOWRONSKI, M	TELAB	0	0	0	1557*
FACE, M	FERMI	0	0	1	1754	SKULSKI, I	EXMPL	2	1	4	1703
FARAQAN, E	CONBK	3	3	3	1688	SMILEY, R	AMCRP	0	6	3	1747
FARIKH, P	DRGNS	0	0	0	0000?	SMITH, BR	TYROS	0	0	0	1509
FARKER, L	TYROS	0	0	0	1740	SOLNER, J	ROYLS	0	0	0	1674*
PATEL, R	CONBK	1	3	0	0000?	SOMBONG, M	CONBK	0	0	1	1722
PEPPERS, G	MTRLA	0	0	0	0000?	SOPRYCH, T	AMCRP	3	4	2	1590
PEREZ, M	PSTOF	0	0	0	0000?	SPANGLER, M	AMOCO	0	0	0	1354
PETERS, B	FLPRO	0	0	0	0000?	SPIEGEL, L	FERMI	9	1	2	1929
PETERS, P	FLPRO	0	6	1	1161#	STAMM, V	CHRGR	0	0	0	1586C
PETERS, S.	CONBK	0	0	0	0000?	STEIN, P	TELAB	4	3	1	2076
PETWAY, L	PSTOF	6	3	1	1504#	STELTON, N	TELAB	0	4	0	1372
PULTS, J	AMOCO	2	0	1	0000?	STEVANOVIC, M	UOP	10	2	1	2122
RADAVICIUS, E	CHRGR	6	3	2	1558C	STINSON, M	INDNS	6	1	5	1857
RAFACZ, T	ROCKW	2	6	1	1444	STOLTZ, B	CHRGR	1	1	0	1813
RAFACZ, W	ROCKW	3	5	1	1480#	STREETS, D	ROOKS	0	0	0	2027C
RAVANAM, S	JCASE	0	0	2	1220*	STUHLBARG, D	UOP	5	3	2	1444C
REDEY, E	ROOKS	2	2	0	1037*	SUERTH, F	EXMPL	1	3	1	1582
REED, L	PSTOF	2	3	1	1643#	SULLIVAN, J	EXCAL	9	2	1	1877C
REID, C	JCASE	1	3	1	1244*	SUMMERS, D	FERMI	3	2	0	1388*
REVULURI, K	ROYLS	2	3	0	0000?	TAGHAP, W	WHEAT	0	0	0	0000?
REYES, R	SEARS	3	0	3	2206C	TASKER, I	ROOKS	0	2	0	1434*
RINGENBERG, T	AMOCO	0	2	0	1324*	TAYLOR, F	WHEAT	1	4	0	0000?
RIZZITANO, J	CBOPE	0	0	0	2577	TEGEL, F	DRGNS	6	3	3	2086D
ROBERTS, R	INDNS	0	0	0	0000?	TENNIE, E	TELAB	1	3	0	1456#
ROMAN, J	ROCKW	0	0	0	0000?	THOMAS, J	CHRGR	5	2	1	1517C
ROSE, K	AMOCO	2	4	2	1735	THOMPSON, M	AMOCO	2	4	2	1371*
ROSING, G	CBOPE	0	0	0	1411*	THOMPSON, R	FLPRO	1	3	0	1058
ROSLEY, D	ROYLS	2	2	1	1692	TOGAMI, P	JCASE	4	2	0	1188*
ROTH, K	WHEAT	1	0	0	0000?	TURPIN, S	INDNS	0	1	0	0000?
RUDY, J	MERC	1	6	1	1238#	UNDERWOOD, W	WHEAT	3	2	4	1906C
RZESZUTKO, R	ALUMN	5	0	1	1813	VAN HOORN, G	KEMPR	2	2	0	0000?
SAGALOVSKY, L	FERMI	5	4	1	1956	VAN MEER, J	KEMPR	0	0	0	1808
SAJBEL, P	UOP	6	4	2	1559*	VAN METRE, R	SEARS	3	3	1	0000?
SAJKOWSKI, D	AMOCO	6	2	1	1827	VAN ZILE, C	UOP	0	2	0	0000?
SALGANIK, E	CONBK	0	1	0	0000?	VERIVE, J	TELAB	1	0	2	1543#
SAMELSON, C	ROCKW	3	3	3	1816	VICK, H	MTRLA	0	0	0	1477
SATCHELL, E	WHEAT	0	4	0	0000?	WALHOUT, P	WHEAT	3	3	3	1956
SATTERLEE, D	JCASE	2	6	1	1549	WALKER, P	WHEAT	2	5	1	1600

? - UNRATED

- 5 TO 9 RATED GAMES

* - 10 TO 24 RATED GAMES

C - CENTURY CLUB MEMBER

D - DOUBLE CENTURION

NAME	TEAM	W	L	D	RATING	NAME	TEAM	W	L	D	RATING
WALKER, R	FERMI	1	0	0	1369C	WIENS, P	WHEAT	3	3	1	1376
WALLIN, R	WHEAT	2	3	2	1664*	WILLIAMSON, E	CONBK	0	1	0	0000?
WALSH, W	ROOKS	2	1	0	1467C	WILLS, B	WHEAT	0	0	0	0000?
WARD, C	DRGNS	5	3	4	1608C	WINBORN, G	AMCRP	0	2	0	0000?
WARREN, J	CHRGR	2	2	2	2034D	WIRTSCHAFTER, D	ALUMN	1	2	0	1945
WEIHMILLER, W	AMCRP	0	7	1	1844	WONG, P	EXMPL	6	1	1	2120C
WEISNER, T	RADIO	1	4	1	1129	YOUNG, C	KNGHT	7	2	2	1826C
WEITZ, R	FLPRO	2	6	1	1750	YOUNG, D	ROOKS	0	0	0	0000?
WENTLING, C	AMCRP	3	4	1	1512	ZAROMB, S	ROOKS	2	3	0	1473*
WHEATLEY, D	CHRGR	2	3	0	1949	ZEIDEL, J	MERC	2	5	2	1872
WHITE, H	JCASE	3	4	1	1560	ZHANG, L	AMOCO	1	3	0	0000?
WHITSITT, S	DRGNS	6	2	1	0000?	ZOELLNER, J	CONBK	2	4	2	1153
WIENCEK, T	ROOKS	0	2	0	1252*						

? - UNRATED

- 5 TO 9 RATED GAMES

* - 10 TO 24 RATED GAMES

C - CENTURY CLUB MEMBER

D - DOUBLE CENTURION