

Chicago Industrial Chess League

Bulletin 7 Volume 34

April, 1991

The Spring business meeting is scheduled for 7:30 PM at the Oak Park Village hall on April 18, 1991. The announcement submitted by our league president, which was published in the February bulletin, contains directions to the Oak Park village hall. That announcement is reprinted in this bulletin.

Several interesting games appear in this issue, and several more have already been submitted, and these will be published next month. Also, two additional proposals have been published for consideration at the next business meeting later this month.

Ordinarily the post-season playoff format is decided at the spring business meeting. Teams anticipating post-season play may desire to ensure that they are represented for this discussion.

--Bulletin Editor - Marty Franek
Home: 708/636-3714
Work: 312/353-1123

1

The CHICAGO INDUSTRIAL CHESS LEAGUE
Spring Meeting will be held at
7:30 PM on Thursday April 18, 1991

in Room B1
of the Oak Park Village Hall
- 1 Village Hall Plaza
Oak Park, IL

(Southeast corner of Madison and Lombard)
Take the Eisenhower to Austin Blvd; then North
to 3rd stop light (Madison); then West (left)
on Madison (2 blocks) to Lombard; park in back.

The agenda at this meeting will include nominating and voting for the positions of President, Secretary, and Treasurer. We will have the Banquet Chairman and the Playoff Tournament Director report on their events.

Anyone interested in running for an office can contact Ross Siegel at (312) 828-2046 for more details. Ross and Jim Brotsos will not be running for reelection. Tony Jasaitis is going to run again for Secretary. The newly elected officers would take their positions beginning with the Fall Meeting.

Any Old or New Business to be included in the agenda should be forwarded one week prior to the meeting to our League Secretary:

Tony Jasaitis
Chicago Research and Trading
440 S. LaSalle St.
Chicago, IL 60605

APCT CHESS BOOK & SUPPLY SALE
BY APPOINTMENT ONLY—NOW 'TIL END OF MAY
ALL CHESS BOOKS & SUPPLIES 25% OFF
SOME BOOKS 30%, 40%, 50%, EVEN 60% OFF

Free book to everyone who
 brings this brochure

FOR APPOINTMENT CALL JIM WARREN (708) 246-6665

No mail orders — you must come in person — no credit cards
 accepted — checks accepted with identification

At: 5333 Woodland Ave.
Western Springs, IL 60558

Our reputation and record of service is our best advertisement.

Directions to get here:

Woodland Ave. is three short blocks west of Wolf Rd. The nearest large intersection is Wolf Rd. and 55th St.

Western Springs is accessible from the tollways and expressways that reach the near western suburbs.

From the east: Exit Eisenhower Expy at Wolf Rd. and take south to 54th St., right to Woodland.

From the west: East-West Tollway to Tri-State South, exit at Ogden Ave. East, go to Wolf Rd., then south to 54th St., right to Woodland.

From the South: Exit Tri-State Tollway to Stevenson Expy taking "South--St. Louis Wolf Rd." exit and take Wolf Rd. north to 54th St., left to Woodland.

From the Southwest: Exit Stevenson Expy at Joliet Rd. ramp to Wolf Rd., north to 54th St., left to Woodland.

CHESS INFORMANT #50

Games from July-Dec 1990-- openings indexed by variation--games have short coded annotations. Fig. alg. notation. The most popular chess series in history!

Only \$20.21 after 25% off!

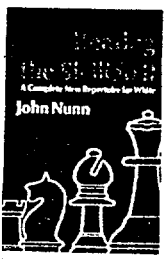
Earlier Informants also available.



See next page for examples of titles

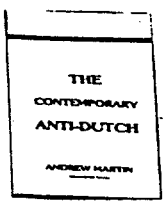
APCT CHESS BOOK & SUPPLY SALE

THE COMPLETE BENKO GAMBIT, by GM John Fedorowicz, who along with GM Lev Alburt is the world's foremost proponent and expert on the dynamic Benko Gambit. List price is \$17.95, APCT price is \$16.95 and with the 25% discount you pay only\$12.71



BEATING THE SICILIAN II, by John Nunn, completely revised and updated set of weapons for White specifically designed to combat new defenses devised for Black to restore the balance upset by the first edition. List price 12.95, APCT price \$12.30 and with the 25% discount you pay only.....\$9.23

THE CONTEMPORARY ANTI-DUTCH, BY Andrew Martin, comprehensive survey covering all Anti-Dutch systems, introducing and explaining the main themes and ideas, and at the same time providing essential, up-to-date information for the tournament competitor. List price \$15.95, APCT price \$14.95 and with the 25% discount you pay only.....\$11.21



EXAMPLES OF SOME RECENT TITLES

PART OF OUR STOCK OF OVER 700 DIFFERENT CHESS TITLES

1990 World Chess Championship Kasparov-Karpov, Wall..\$4.61
 Nimzo-Indian 4 Qc2 Classical Variation, Dlugy.....10.65
 Soltis, Confessions Of A Grandmaster.....17.78
 How To Reassess Your Chess (2nd Edition), Silman..11.96
 Attacking The Benko - Nescafe Frappe Attack, Burgess. 4.28
 Practical Bishop Endings, GM Edmar Mednis..... 4.95
 Pawn Power In Chess, Hans Kmoch..... 4.88

Above prices reflect 25% off APCT price. Many titles are 30%, 40%, 50% or more off! All chess equipment, sets, boards, clocks, etc. are 30% off.

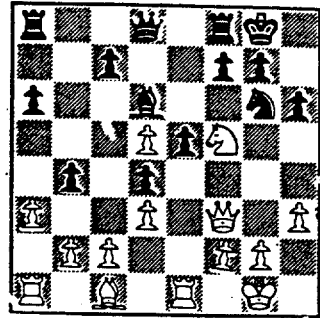
See previous page for details of sale

Continental Bank (Visitors) vs. Alumni Central (Home)
Board 4
March, 1991

White: Asher Bronfeld
Black: Erman Paraoan
'Dunst Opening'
Annotated by Asher Bronfeld

- 1. Nc3
Not a misprint. This move usually has the beneficial effect of making my opponent use five minutes on the clock searching for a rejoinder.
- 1. ... d5
- 2. e4 d4
- 3. N/3-e2
One must retreat to attack.
- 3. ... e5
- 4. Nf3
(ed. My sources give 4. Ng3 with the idea of d3 and then f4!).
- 4. ... Nc6
(ed. I guess the same idea applies to Black's fourth move. How about 4. ... Bd6 so that c5 can be played to support the d pawn just in case White get in f4? See Horowitz's Chess Openings: Theory and Practice page 782.)
- 5. Ng3 a6
- 6. Bc4
Not the best place for this piece, but I had visions of a Kingside blitz.
- 6. ... h6
- 7. a3 Nf6
- 8. d3 b5
My opponent wants this bishop eliminated.
- 9. Ba2 Bd6
- 10. 0-0 b4
Looking to exchange pawns - something I resolved not to do.
- 11. Bd5 N:d5
- 12. e:d5 Ne7
- 13. Re1 Bg4
- 14. h3 B:f3

- 15. Q:f3 Ng6
- 16. Nf5! 0-0 (?)
(ed. - To be considered were 16. ... Kf8 and 16. ... Qf6. The latter has the interesting threat of ... Nf4, and leaves open the option of castling on the side if necessary. It would appear the Black's defensive resources after the text are inadequate.)



- 17. B:h6 !?
This is an automatic sacrifice for me. I vaguely saw some good variations where I would win material.
- 17. ... g:h6
- 18. N:h6 ch Kg7
- 19. Nf5 ch Kg8
- 20. Qh5 Qf6
It has been ten moves now and the pawn on b4 has not been exchanged.
- 21. Re4 Qh8 ?
(ed. - To be considered was Nf4. Black is looking to simplify, but this needlessly traps the queen.)
- 22. Qg5 Qh7

23. Rh4

Not as good a move as I thought it was.

23. ... Q:h4

24. N:h4 Be7

I missed this.

25. Qg4 B:h4

26. g3 Bf6

27. h4 Kh7

28. h5 Ne7

29. Qe4 ch - Kh6

(ed. - True, Black has two minor pieces and a rook for the queen, but White has two extra pawns and threats to win more pawns, so White is not really materially inferior.)

30. Kg2

Giving air to my rook.

30. ... Bg7

31. g4 f5

32. gf N:f5

R:f5 is met by ... d6!

33. Qg4 Rf6

34. Re1 Raf8

(ed. - Rg8 is probably necessary.)

35. Kh1 !

R:e5 loses at least an exchange to Ne3ch!

35. ... Rd6

36. f4! Ne3?

(ed. - Relatively best is e:f4, when after 37. Re6ch R:e6 38.d:e6 Rf6, or 37. Q:f4 Kh7, Black is lost but it's still a fight.)

37. Qg5 ch Kh7

38. Rg1 Rf7

39. f:e5

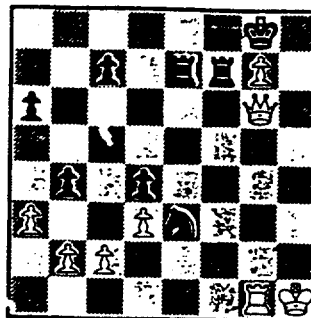
You didn't think that I would take the knight pawn??
(ed. - Of course not! White must play actively to keep the winning initiative.)

39. ... R:d5

40. Qg6ch Kg8

41. h6 R:e5

42. h:g7 R/5-e7



43. Qh7 ch

1:0

Continental Bank (Visitors) vs. Sears (Home)
Board 2

March 6, 1991

White: Ed Latimer

Black: Steve Loring

Candidate Game for Best Sacrifice
Annotated by M. Franek and R. Rzeszutko

- 1. e4 c6
- 2. d4 d5
- 3. Nc3 de
- 4. N:e4 Nf6
- 5. Ng3

MCO 12 call this move tepid. Horowitz, in his opening manual Chess Openings Theory and Practice, says 5. N:f6 is White's best chance to maintain the initiative, but considers the text playable.

5. ... c5!
5. ... e4 here is the 'book' move, but Horowitz compliments this move.

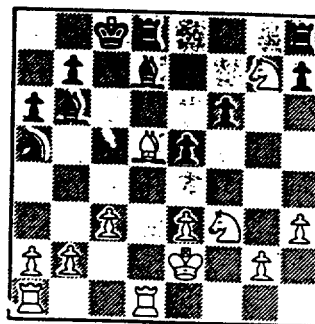
- 6. Be3 Qa5
- 7. Qd2 Q:d2
- 8. K:d2 c:d4
- 9. B:d4 Nc6
- 10. Bb5 Bd7
- 11. Be3

It would appear that White's seventh move has allowed Black to seize the initiative. Perhaps 7. c3 was better.

- 11. ... Ng4
- 12. Nf3 e5
- 13. Rhd1 f6
- 14. h3 N:e3
- 15. f:e3 0-0-0
- 16. Ke2 a6
- 17. Bc4 Bb4
- 18. c3 Ba5
- 19. Nh5 Bb6
- 20. N:g7

A bad decision, as Black will prove.

- 20. ... Na5
- 21. Bd5



21. ... Rdg8 !
Black correctly sees that control of the g file will be well worth the exchange and pawn.

- 22. B:g8 R:g8
- 23. b3

We looked at various defensive attempts to save White, including Kf1, g4, Rd2, but Black's position is overwhelming, and will have a material advantage to boot. White's 23rd move appears to be the most stubborn defense, but since it still fails, I don't feel I can put an exclamation point next to it.

- 23. ... R:g7
- 24. Kf2 Bc6!
- 25. Rd6

We thought g4 or Re1 offered somewhat better chances to resist.

- 25. ... f5
- 26. Ne1 f4
- 27. Nc2 R:g2 ch
- 28. Kf1 R:c2
- 0:1

Continental Bank (Visitors) vs. Alumni Central (Home)
Board 5
Round 8 March, 1991

White: Ross Siegel

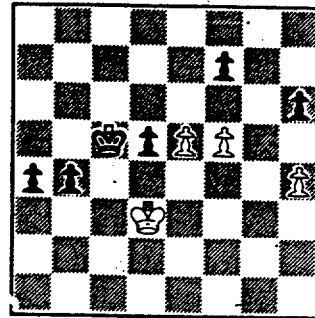
Black: Al Litvinas

Candidate Game for Best Salvage

1. d4
2. c4
3. Nc3
4. Bg5
5. Nf3
6. e3
7. c5
8. Bd3
9. Ne5 (?)
10. d:e5
11. f4
12. Bc2
13. Bh4
14. Ne2
15. 0-0
16. Bb3
17. h3
18. Q:b3
19. a:b3
20. Nd4
21. Rae1
22. Nf3
23. R:e3
24. Rf2
25. Kh2
26. Rd2
27. N:d2
28. b4
29. Kg1
30. Be1
31. Ne4
32. R:e4
33. Kf2
34. Kf3
35. b:c5
36. Bb4
37. R:b4
38. Ke4
39. Rd4 (??)
40. Rb4
41. g4
42. f5
43. h4
44. Rd4 (??)
45. R:d5 ch

d5
c6
Nf6
g6
Bg7
0-0
Nbd7
Re8
N:e5
Nd7
N:c5
Ne6
d4 (!)
d:e3
Qb6
Nc5
N:b3
Q:b3
Be6
Bd5
Rad8 (!)
B:b3
Bc4
Rd1 ch
h6
R:d2
Bd5
a6
Bf8 (!)
e6
B:e4
Rd8
Rd5
c5
B:c5
B:b4
b5
a5
a4 (?)
Kf8
Ke7
Kd7
Kc6
a4 (?)
e:d5

46. Kd3 g:f5
47. g:f5 b4 (???)



(After 47. ... Kc6 Black
is still winning!)

48. f6 !!! a3
49. e6 !! a2
50. e:f7 !!

So as to queen with check.

50. ... a1=Q
51. f8=Q ch Kb5
52. Qb8 ch Kc5
53. Qc7 ch Kb5
DRAW!

All Attendees
CICL Spring Meeting
c/o Tony Jasaitis
Chicago Research and Trading
440 S. LaSalle St.
Chicago, IL 60605

March 25, 1991

Gentlemen: Re: CICL MATCH RESULT SHEET

The team standings and player ratings in the CICL bulletin have always been weeks, if not over a month, late.

The lateness of the ratings and team standings as well as information vital to how board matchups are set up (such as when a team incurs two defaults) may inadvertently influence the results of critical races in a division.

The 100-point-difference rule and the two-default rule directly influence how a team's match roster is set up.

Moreover, the impact of publication of team standings in the CICL bulletin become meaningless when two or even three matches behind.

TO REDUCE LEAD-TIME IN PLAYER RATINGS LIST AND TEAM STANDINGS AS WELL AS PUBLICATION OF TWO-DEFAULT VIOLATIONS, I PROPOSE:

- A COPY OF THE MATCH SCORE SHEET BE SENT DIRECTLY TO
- THE RATINGS CHAIRMAN
- THE BULLETIN EDITOR

Very respectfully yours,

Ruben R. Reyes

RUBEN R. REYES
2919 W. Leland Ave.
Chicago, IL 60625

PROPOSAL

Re: Most Improved Player Award

By: Tony Jasaitis

An award is given for the Most Improved Player (MIP) at the end of the season, based on rating points gained during the season. It is possible for someone to get the award without earning it through the heat of battle by playing a match against one's own teammates, or as an extra board against one's own teammates. For that matter, any extra board game does not carry as much of the heat of a match result with it.

Such a player can gain significant rating points by beating an opponent who is not as obliged to perform well because a team match result does not depend on him. This would not be fair to other candidates whose opponents needed to play their best.

Being that the MIP is a recognition of significant effort expended throughout the season, and often a low-rated player's first award, I request the league to adopt one of the following proposals:

PROPOSAL

"For the purposes of the Most Improved Player award, only rating points gained by playing on regular team boards will be counted (no extra boards or private matches)."

LIBERAL VERSION OF PROPOSAL

"For the purposes of the Most Improved Player award, rating points gained by playing against one's own teammates will be excluded from the total rating points gained during the season."

Note that the league does not need to do any work during the year regarding this proposal (such as editing the MIP list). All that needs to be done is: at the end of the season, the ratings chairman or awards chairman scans the season's bulletins for games played by the leading MIP candidate, noting any ineligible rating points gained.

Ratings Chairman's Report

Alumni Central is the fifth team to incur two forfeits on upper boards. They now join Sears, Rockwell, A&B Radio and the Second Stringers in having forfeited the right to start a clock in the absence of a player at the start of a match for the remainder of the 1990-91 season. In future matches, if any of their players are not present at the end of the grace period, all four of these teams must shift their lineups upward to fill any empty roster slots, and take forfeits on the lower boards.

NORTH DIVISION 03/30/91

TEAM NAME	W	L	D	GAME POINTS	MATCH POINTS	PCT
MOTOROLA	5	1	0	25.0	5.0	0.833
NORTHROP CORP.	3	1	2	21.5	4.0	0.667
UOP PROCESS DIV.	3	2	1	23.0	3.5	0.583
EXCALIBURS	2	2	2	17.5	3.0	0.500
KEMPER INSURANCE	2	2	2	15.0	3.0	0.500
EXEMPLARS	2	3	1	18.0	2.5	0.417
FEL-PRO	0	6	0	5.0	0.0	0.000

— EAST DIVISION 03/30/91

TEAM NAME	W	L	D	GAME POINTS	MATCH POINTS	PCT
CHICAGO POST OFFICE	6	2	0	33.5	6.0	0.750
ALUMNI CENTRAL	5	3	0	29.5	5.0	0.625
ALUMNI 2ND STRINGERS	4	3	1	27.5	4.5	0.563
SEARS	3	3	2	25.0	4.0	0.500
CHICAGO RES. & TRDG.	2	3	3	22.5	3.5	0.438
CONTINENTAL BANK	2	4	2	20.0	3.0	0.375
AMOCO CORP.	3	3	0	15.0	3.0	0.500
CHICAGO MERC. EXCH.	1	5	0	6.0	1.0	0.167

NEAR WEST DIVISION 03/30/91

TEAM NAME	W	L	D	GAME POINTS	MATCH POINTS	PCT
ARGONNE KNIGHTS	7	0	0	31.0	7.0	1.000
BELL LABS DRAGONS	5	1	1	26.0	5.5	0.786
BELL LABS ROYALS	4	3	0	27.0	4.0	0.571
ROCKWELL INT'L	3	3	1	20.5	3.5	0.500
AT&T CHARGERS	3	4	0	20.0	3.0	0.429
A & B RADIO	1	6	0	9.0	1.0	0.143
J. I. CASE	0	6	0	10.5	0.0	0.000

FAR WEST DIVISION 03/30/91

TEAM NAME	W	L	D	GAME POINTS	MATCH POINTS	PCT
FERMILAB	6	0	1	26.5	6.5	0.929
BELL LABS INDIANS	4	1	1	24.0	4.5	0.750
AT&T TYROS	2	4	0	13.5	2.0	0.333
AMOCO RESEARCH LABS	1	4	0	14.0	1.0	0.200
WHEATON COLLEGE	1	5	0	12.0	1.0	0.167

15-JAN-91 ALUMNI CENTRAL
ROUND 5 BD

	RATINGS	SCORE
1 CZERNIECKI, A	2312	-2
2 WIRTSCHAFTER, D	2072	14
3 COX, M	1998	-11
4 BRONFELD, A	1864	-2
5 LITVINAS, A	1820	-26
6 BROTSOS, J	1586	3

3.5
SCORE

ALUMNI 2ND STRINGERS

2.5
RATINGS SCORE

	RATINGS	SCORE
GELBART, S	2269	3
RZESZUTKO, R	1932	-14
FRANEK, M	1824	11
BEARD, G	1838	2
CHARKOVSKY, R	1758	26
SMITH, JM	1217	-5

06-FEB-91 CONTINENTAL BANK
ROUND 6 BD

	RATINGS	SCORE
1 NELSON, H	1947	27
2 FRAATS, D	1874	3
3 PARADAN, E	1826	-22
4 SOMBONG, M	1804	-20
5 DYCZKOWSKI, R	0	0
6 ZOELLNER, J	1167	-3
7 HAMMOND, M	1316	16
8 ZOELLNER, J	1164	0
9 PATEL, R	1490	-6
10 SIEGEL, R	1524	-8

2
SCORE

ALUMNI 2ND STRINGERS

4
RATINGS SCORE

	RATINGS	SCORE
WINSTON, H	2024	-27
RZESZUTKO, R	1918	-3
FRANEK, M	1835	22
BEARD, G	1840	20
CHARKOVSKY, R	1784	0
DAVIDSON, M	1616	3
SMITH, JM	1212	-16
HILLIARD, J	0	0
PARADAN, E	1804	6
SOMBONG, M	1784	8

06-FEB-91 CHICAGO RES. & TRDG.
ROUND 6 BD

	RATINGS	SCORE
1 JASAITIS, A	2150	10
2 FRIESEMA, W	1982	4
3 LOSOFF, A	1972	-20
4 RO, D	1518	-11
5 BERNARD, D	1124	42
6 DENG, J	0	0

3
SCORE

SEARS

3
RATINGS SCORE

	RATINGS	SCORE
REYES, R	2305	-6
LATIMER, E	2037	-2
GOLLA, R	2007	13
SCHWARTZ, S	1708	8
CHAN, H	1613	-42
MORTON, B	1605	0

21-FEB-91 CHICAGO POST OFFICE
ROUND 6 BD

	RATINGS	SCORE
1 INUMERABLE, F	2192	0
2 GREGORY, J	2197	0
3 ROGERS, N	1998	1
4 MARCOWKA, R	2001	0
5 HOWARD, W	1123	0
6 PETWAY, L	1537	0
(CONBK) 7 HAMMOND, M	1332	34

6
SCORE

CHICAGO MERC. EXCH.

0
RATINGS SCORE

	RATINGS	SCORE
FRANK, M	0	0
SULLIVAN, C	0	0
GAVIN, L	1238	-1
GROTANS, G	0	0
HILTON, J	0	0
PETWAY, L	0	0
PETWAY, L	1537	-34

26-FEB-91 ALUMNI 2ND STRINGERS
ROUND 7 BD

	RATINGS	SCORE
1 RZESZUTKO, R	1915	14
2 WINSTON, H	1997	-25
3 FRANEK, M	1857	-15
4 BEARD, G	1860	5
5 CHARKOVSKY, R	1784	-44
6 SMITH, JM	1196	0

1.5
SCORE

CHICAGO RES. & TRDG.

4.5
RATINGS SCORE

	RATINGS	SCORE
JASAITIS, A	2160	-14
LOSOFF, A	1952	25
FRIESEMA, W	1986	15
RO, D	1507	-5
BERNARD, D	1166	44
DENG, J	0	0

06-MAR-91 SEARS

ROUND 7 BD

			CONTINENTAL BANK					
			3			3		
			RATINGS	SCORE			RATINGS	SCORE
1	REYES, R	2299	4	1	NELSON, H	1974	-6	0
2	LATIMER, E	2035	-17	0	LORING, S	1978	26	1
3	GOLLA, R	2020	9	1	FRAATS, D	1877	-14	0
4	SCHWARTZ, S	1716	4	.5	PARADAN, E	1810	-6	.5
5	MORTON, B	1605	12	.5	SOMBONG, M	1792	-12	.5
6	MILLER, TT	0	0	0	SIEGEL, R	1516	0	1
(CONBK) 7	HAMMOND, M	1366	11	1	ZOELLNER, J	1164	-11	0
(CONBK) 8	ZOELLNER, J	1153	22	.5	SOMBONG, M	1780	-22	.5

21-JAN-91 EXCALIBURS

ROUND 6 BD

			NORTHROP CORP.					
			3			3		
			RATINGS	SCORE			RATINGS	SCORE
1	BUERGER, E	2060	-9	0	JAKSTAS, K	2216	13	1
2	SULLIVAN, J	2017	-14	0	GOLUMBOVSKI, P	2049	20	1
3	FRISKE, T	1895	-20	0	DIAZ, P	1937	20	1
4	OSTERLUND, R	1883	11	1	BURIAN, D	1690	-11	0
5	FABIJONAS, R	1756	6	1	STEMPINSKI, P	1506	-9	0
6	ROHING, G	1467	0	1	ELEK, G	0	0	0

18-FEB-91 UOP PROCESS DIV.

ROUND 7 BD

			FEL-PRO					
			6			0		
			RATINGS	SCORE			RATINGS	SCORE
1	BOLDINGH, E	2028	12	1	WEITZ, R	1850	-12	0
2	MICKLICH, F	1813	7	1	HESS, B	1526	-7	0
3	BRIONES, M	1695	5	1	FELDMAN, A	1405	-7	0
4	SAJBEL, P	1663	0	1	REHORST, R	0	0	0
5	STUHLBARG, D	1529	2	1	THOMPSON, R	1047	-3	0
6	CHEVERESAN, S	1389	0	1F		0	0	OF
7	VAN ZILE, C	1398	-23	0	CHEVERESAN, S	1389	23	1 (UOP)

18-FEB-91 NORTHROP CORP.

ROUND 7 BD

			KEMPER INSURANCE					
			3			3		
			RATINGS	SCORE			RATINGS	SCORE
1	JAKSTAS, K	2229	-28	0	SIWEK, M	2141	28	1
2	GOLUMBOVSKI, P	2069	-14	.5	HUGHES, N	1833	14	.5
3	DIAZ, P	1957	0	1	GUILLEN, B	0	0	0
4	VIGANTS, A	1625	13	1	BLOEDOW, P	1476	-9	0
5	STEMPINSKI, P	1497	-28	0	TATARSKY, J	1410	28	1
6	ELEK, G	0	0	.5	CUMMUTA, P	1354	0	.5
7	BURIAN, D	1679	0	1	BISH, D	0	0	0 (NORTH)

21-FEB-91 MOTOROLA

ROUND 7 BD

			EXEMPLARS					
			4.5			1.5		
			RATINGS	SCORE			RATINGS	SCORE
1	EASTER, R	2115	7	.5	WONG, P	2221	-4	.5
2	BLOOM, B	2064	3	.5	CREWSE, L	2095	-3	.5
3	OGASAWARA, L	1875	-3	.5	SKULSKI, I	1837	3	.5
4	AUGSBURGER, L	1792	11	1	SUERTH, F	1588	-11	0
5	OGASAWARA, R	1604	0	1F	DELHAFEN, A	1316	0	OF
6	GONCHAROFF, N	1768	0	1F		0	0	OF
7	OLUND, P	1346	14	1	MOLES, J	1209	-14	0 (MTRLA)
8	HERNANDEZ, D	1493	0	0	HUNG, N	0	0	1 (MTRLA)

13-FEB-91 ROCKWELL INT'L
ROUND 7 BD

			5	J. I. CASE			
			RATINGS	SCORE			
1	JONES, B	2139-19	.5	WHITE, H	1740	19	.5
2	MITCHAM, L	0 0	1	SATTERLEE, D	1608	0	0
3	RAFACZ, W	1643-11	.5	KALE, S	1458	11	.5
4	RAFACZ, T	1633 5	1	REID, C	1269	-5	0
5	EFRON, D	1562 3	1	CARTER, D	1084	-3	0
6	MCQUINN, J	1562 0	1	GUTNIK, I	0	0	0
7	DEWITT, G	1382 -8	.5	KANAS, W	1257	8	.5

27-FEB-91 BELL LABS ROYALS
ROUND 8 BD

			5.5	A & B RADIO			
			RATINGS	SCORE			
1	GUIDO, J	2160 2	1	O'DELL, DW	1614	-2	0
2	DOBROVOLNY, C	1916 0	1	BOOKER, G	0	0	0
3	HAHNE, D	1567 -7	.5	LASKY, N	1460	7	.5
4	HICKS, C	1449 22	1	LASKY, J	1434-22		0
5	CROWE, R	1428 0	1F	MCGRIFF, M	1410	0	OF
6	ANDERSON, CJ	1201 0	1F	MIKULECKY, B	1312	0	OF

06-MAR-91 ROCKWELL INT'L
ROUND 8 BD

			3	BELL LABS DRAGONS			
			RATINGS	SCORE			
1	JONES, B	2120 27	1	TEGEL, F	2186-18		0
2	MITCHAM, L	0 0	1F	CHRISTIAN, R	1883	0	OF
3	RAFACZ, W	1632 -6	0	JACOBS, N	1965	4	1
4	RAFACZ, T	1638-15	0	DURKEE, D	1766	15	1
5	EFRON, D	1565-36	0	BECKLEY, S	1331	36	1
6	MCQUINN, J	1562 0	1F		0	0	OF

07-MAR-91 ARGONNE KNIGHTS
ROUND 8 BD

			4.5	AT&T CHARGERS			
			RATINGS	SCORE			
1	BENEDEK, R	2225 1	1	KUMRO, D	1688	-1	0
2	BERRY, G	2090-12	.5	RADAVICIUS, E	1701	12	.5
3	DECMAN, S	1818 5	1	THOMAS, J	1556	-8	0
4	BAURAC, D	1701-21	0	DOBR, K	1546	21	1
5	HILL, R	1625 9	1	BRADY, R	1377	-9	0
6	ZAROMB, S	1454 17	1	SWIDERSKI, M	1362-11		0

28-FEB-91 FERMILAB
ROUND 6 BD

			3.5	WHEATON COLLEGE			
			RATINGS	SCORE			
1	SPIEGEL, L	2081 3	.5	WALHOUT, P	2124	-3	.5
2	KALIHER, C	1908 27	1	UNDERWOOD, W	1975-18		0
3	PARA, A	0 0	0	WIENS, P	1387	0	1
4	CISKD, G	0 0	1	TAYLOR, F	1231	0	0
5	DOWAT, C	1458 13	1	PYLES, C	1307-13		0
6	COLE, P	0 0	0	NELSON, R	0	0	1

28-FEB-91 AT&T TYROS
ROUND 8 BD

			.5	BELL LABS INDIANS			
			RATINGS	SCORE			
1	BLAZIE, J	1813 -5	0	LUDWIG, T	2158	5	1
2	THOMAS, G	1423 -8	0	BLACKMON, E	1691	8	1
3	MCPHAIL, C	0 0	0	BHOJWANI, R	0	0	1
4	SCHWARTZ, M	0 0	.5	EUSTACE, D	1318	0	.5
5	RADULSKI, R	0 0	0	SHEU, G	1269	0	1
6		0 0	OF		0	0	1F

07-MAR-91 AMOCO RESEARCH LABS		2.5 FERMILAB		3.5	
ROUND 7 BD		RATINGS	SCORE	RATINGS	SCORE
1	SAJKOWSKI, D	1916-12	0	SPIEGEL, L	2084 12 1
2	PULTS, J	1782 32	1	KALIHER, C	1935-32 0
3	SUH, G	0 0	.5	GAINES, I	1728 0 .5
4	MANILLA, M	0 0	1	CISKD, G	0 0 0
5	POMA, D	0 0	0	PARA, A	0 0 1
6	SCHATTKE, N	0 0	0	COLE, F	0 0 1

21-MAR-91 BELL LABS INDIANS		3 FERMILAB		3	
ROUND 9 BD		RATINGS	SCORE	RATINGS	SCORE
1	LUDWIG, T	2163-15	0	KOZLOVSKY, M	2290 15 1
2	STINSON, M	2023 5	.5	SPIEGEL, L	2096 -5 .5
3	BHOJWANI, R	0 0	.5	GLICENSTEIN, J	1946 0 .5
4	EUSTACE, D	1318 -4	0	GAINES, I	1728 3 1
5	FLYNN, T	0 0	1	CISKD, G	0 0 0
6	LODER, S	0 0	1	HARRIS, R	1578 0 0

19-FEB-91 AMOCO CORP.		4 ALUMNI CENTRAL		1	
ROUND 6 BD		RATINGS	SCORE	RATINGS	SCORE
1	HODINA, J	1986 39	1	CZERNIECKI, A	2310-26 0
2	SMILEY, R	1959 0	OF	WIRTSCHAFTER, D	2086 0 OF
3	ATKINSON, J	1893-17	0	COX, M	1987 17 1
4	SOPRYCH, T	1609 36	1	BRONFELD, A	1862-36 0
5	KRULL, E	1334 42	1	LITVINAS, A	1794-42 0
6	WENTLING, C	1491 29	1	BROTSOS, J	1589-19 0

26-FEB-91 CHICAGO MERC. EXCH.		0 ALUMNI CENTRAL		6	
ROUND 7 BD		RATINGS	SCORE	RATINGS	SCORE
1	SULLIVAN, C	0 0	0	CZERNIECKI, A	2284 0 1
2	GAVIN, L	1237 0	0	WIRTSCHAFTER, D	2086 0 1
3	COTE, J	0 0	0	COX, M	2004 0 1
4	RUDY, J	1246 -2	0	BRONFELD, A	1826 2 1
5	GROTANS, G	0 0	0	LITVINAS, A	1752 0 1
6	HILTON, J	0 0	0	BROTSOS, J	1570 0 1

27-FEB-91 AMOCO CORP.		1.5 CHICAGO POST OFFICE		4.5	
ROUND 7 BD		RATINGS	SCORE	RATINGS	SCORE
1	HODINA, J	2025-12	0	INUMERABLE, F	2192 12 1
2	SMILEY, R	1959 0	1F	GREGORY, J	2197 0 OF
3	ATKINSON, J	1876-15	0	MARCOWKA, R	2001 10 1
4	SOPRYCH, T	1645 -5	0	ROGERS, N	1999 5 1
5	KRULL, E	1376 18	.5	COOPER, W	1720-18 .5
6	HAMILTON, L	0 0	0	CARTER, L	1550 0 1
7	CAMPBELL, C	1192 -6	0	PETWAY, L	1503 6 1
8	GIBSON, K	0 0	0	HOWARD, W	1123 0 1

19-MAR-91 ALUMNI CENTRAL
ROUND 8 BD

			5.5	CONTINENTAL BANK			
			RATINGS	SCORE			
					RATINGS	SCORE	.5
1	CZERNIECKI, A	2284 4	1	NELSON, H	1968 -6	0	
2	WIRTSCHAFTER, D	2086 10	1	FRAATS, D	1863-10	0	
3	COX, M	2004 9	1	SOMBONG, M	1758 -9	0	
4	BRONFELD, A	1828 21	1	PARAOAN, E	1804-21	0	
5	LITVINAS, A	1752-14	.5	SIEGEL, R	1516 14	.5	
6	BROTSOS, J	1570 3	1	ZOELLNER, J	1175 -4	0	
(CONBK) 7	MCINTOSH, S	1065 41	1	PATEL, R	1484-41	0	
(CONBK) 8	SOMBONG, M	1749 2	1	ZOELLNER, J	1171 -2	0	
(CONBK) 9	PARAOAN, E	1783 1	1	ZOELLNER, J	1169 -1	0	
(CONBK) 10	PARAOAN, E	1784-22	.5	ZOELLNER, J	1168 22	.5	

20-MAR-91 CHICAGO RES. & TRDG.
ROUND 8 BD

			3	ALUMNI 2ND STRINGERS			
			RATINGS	SCORE			
					RATINGS	SCORE	3
1	JASAITIS, A	2146-13	.5	RZESZUTKO, R	1929 13	.5	
2	LOSOFF, A	1977-23	0	WINSTON, H	1972 23	1	
3	FRIESEMA, W	2001 14	1	BEARD, G	1865-14	0	
4	BERNARD, D	1210 -1	0	FRANEK, M	1842 1	1	
5	DENG, J	1509 14	.5	CHARKOVSKY, R	1740-14	.5	
6	RIEDERER, D	0 0	1	DAVIDSON, M	1619 0	0	

20-MAR-91 CHICAGO POST OFFICE

			2.5	SEARS			
			RATINGS	SCORE			
					RATINGS	SCORE	3.5
1	INUMERABLE, F	2204 7	.5	REYES, R	2303 -4	.5	
2	MARCOWKA, R	2011 15	1	LATIMER, E	2018-15	0	
3	ROGERS, N	2004-21	0	GOLLA, R	2029 14	1	
4	COOPER, W	1702 2	.5	SCHWARTZ, S	1720 -1	.5	
5	CARTER, L	1550 5	.5	MORTON, B	1617 -5	.5	
6	PETWAY, L	1509 0	0	MILLER, TT	0 0	1	

NORTH DIVISION TOP TEN

STEVANOVIC, M	UOP	2253C
WONG, P	EXMPL	2217C
JAKSTAS, K	NORTH	2201
SIWEK, M	KEMPR	2169
EASTER, R	MTRLA	2122
CREWSE, L	EXMPL	2092
LEONG, G	EXCAL	2072C
BLOOM, B	MTRLA	2067
SAMELSON, C	MTRLA	2059C
GOLUMBOVSKI, P	NORTH	2055*

EAST DIVISION TOP TEN

GILES, M	SEARS	2473
REYES, R	SEARS	2299C
CZERNIECKI, A	ALUMN	2288C
GELBART, S	SECST	2272
KRAS, T	ALUMN	2262
INUMERABLE, F	PSTOF	2211
GREGORY, J	PSTOF	2197
JASAITIS, A	CRT	2133
WIRTSCHAFTER, D	ALUMN	2096
GOLLA, R	SEARS	2043C

NEAR WEST DIVISION TOP TEN

LEVINE, D	KNGHT	2371
BENEDEK, R	KNGHT	2226C
TEGEL, F	DRGNS	2168D
GUIDO, J	ROYLS	2162
JONES, B	ROCKW	2147
BERRY, G	KNGHT	2078D
BORUM, J	DRGNS	2006
JACOBS, N	DRGNS	1969C
YOUNG, C	KNGHT	1952C
DOBROVOLNY, C	ROYLS	1916*

FAR WEST DIVISION TOP TEN

CHACHERE, L	INDNS	2362
KOZLOVSKY, M	FERMI	2305*
LUDWIG, T	INDNS	2148
WALHOUT, P	WHEAT	2121
SPIEGEL, L	FERMI	2091
STINSON, M	INDNS	2028
BUCHNER, R	INDNS	1994
FEIJFFERS, S	INDNS	1990
ROSE, K	AMOCO	1975
ROSE, J	FERMI	1972

MOST IMPROVED PLAYERS

HAMMOND, M	CONBK	113
HICKS, C	ROYLS	111
BERNARD, D	CRT	102
CROWE, R	ROYLS	101
KRULL, E	AMCRP	93
BECKLEY, S	DRGNS	83
CUMMUTA, P	KEMPR	81
NELSON, H	CONBK	72
CHEVERESAN, S	UOP	66
CARTER, L	PSTOF	58

NAME	TEAM	W	L	D	RATING	NAME	TEAM	W	L	D	RATING
ALEMAN, M	AMOCO	0	0	0	0000?	CHIU, H	KNGHT	4	0	0	1617*
ALMAZAN, S	NORTH	3	0	0	0000?	CHOUDRY, A	KEMPR	0	1	0	0000?
ANDERSON, CJ	ROYLS	1	3	0	1201#	CHRISTIAN, R	DRGNS	3	2	1	1883C
ANDERSON, N	EXCAL	0	0	0	1782C	CHURCHILL, W	INDNS	0	0	0	1762
ANGLIN, B	SEARS	0	0	1	1684*	CIBA, F	SEARS	0	0	1	1406
ANSARI, N	WALGR	0	0	0	1650	CIESLEK, D	MTRLA	2	0	0	2041*
ATKINSON, J	AMCRP	1	4	1	1861	CISKO, G	FERMI	3	2	0	0000?
AUGSBURGER, L	MTRLA	6	0	0	1803	CLARE, B	ROOKS	0	0	0	2185
BAKER, B	FLPRO	0	4	0	1009	CLEMONS, V	AMCRP	0	0	0	0000?
BAURAC, D	KNGHT	2	2	3	1680C	COLE, P	FERMI	1	3	0	0000?
BAYUS, T	MTRLA	0	0	0	0000?	COOPER, J	AMCRP	0	0	0	0000?
BEARD, G	SECST	5	1	1	1851*	COOPER, W	PSTOF	3	2	2	1704
BECKLEY, S	DRGNS	4	2	1	1367*	COTE, J	MERC	1	3	0	0000?
BENEDEK, R	KNGHT	4	0	0	2226C	COX, M	ALUMN	4	2	1	2013C
BERNARD, D	CRT	3	3	1	1209*	CREWSE, L	EXMPL	1	0	3	2092
BERRY, G	KNGHT	2	0	2	2078D	CROWE, R	ROYLS	4	1	1	1428*
BHOJWANI, R	INDNS	1	0	2	0000?	CRUZ, R	FLPRO	0	0	0	1418*
BINGLE, J	ROOKS	0	0	0	1481C	CUMMUTA, P	KEMPR	3	1	2	1354
BISH, D	NORTH	1	1	0	0000?	CZERNIECKI, A	ALUMN	5	1	2	2288C
BLACKMON, E	INDNS	3	1	1	1699	DANELIUK, T	SECST	0	0	0	0000?
BLAZIE, J	TYROS	1	3	1	1808	DANES, D	ROOKS	0	0	0	0000?
BLOEDOW, P	KEMPR	1	5	0	1467C	DAVIDSON, M	SECST	2	1	0	1619*
BLOOM, B	MTRLA	2	2	1	2067	DAWSON, J	KNGHT	1	2	0	1408
BOHMBACH, J	CRT	0	0	0	1447*	DECMAN, S	KNGHT	1	1	0	1823C
BOLDINGH, E	UOP	3	2	1	2040*	DENG, J	CRT	5	2	1	1523#
BOLLIG, W	NORTH	0	0	0	0000?	DEWITT, G	ROCKW	2	2	1	1374
BOOKER, G	RADIO	0	3	1	0000?	DEZONNO, T	ROCKW	0	1	0	0000?
BORUM, J	DRGNS	0	0	0	2006	DIAZ, P	NORTH	3	2	0	1957
BRADY, R	CHRGR	2	3	0	1368*	DOBR, K	CHRGR	4	1	1	1567D
BRANDT, W	DRGNS	0	0	0	1402*	DOBROVOLNY, C	ROYLS	4	1	2	1916*
BRIONES, M	UOP	3	2	0	1700C	DORRIES, T	FERMI	0	0	0	1893*
BROCKETT, M	SEARS	0	2	0	1771	DOWAT, C	FERMI	1	0	0	1471
BRONFELD, A	ALUMN	4	2	2	1849	DUNCAN, T	MTRLA	0	1	0	0000?
BROSKA, P	MERC	0	0	0	1423#	DURKEE, D	DRGNS	5	1	1	1781C
BROTSOS, J	ALUMN	4	2	1	1573D	DYCKOWSKI, R	CONBK	2	2	2	1680#
BROZOVICH, J	TYROS	0	0	0	1781C	EASTER, R	MTRLA	1	2	3	2122
BUCHNER, R	INDNS	2	0	0	1994	EDWARDS, S	EXMPL	1	0	0	1254
BUERGER, E	EXCAL	2	4	0	2051D	EFRON, D	ROCKW	3	2	0	1529
BURBA, K	ROOKS	0	0	0	1414C	ELEK, G	NORTH	0	3	1	1007#
BURIAN, D	NORTH	4	2	0	1679	ELLERY, G	RADIO	1	1	0	1464#
CAGNEY, D	KEMPR	0	0	0	0000?	EUSTACE, D	INDNS	2	1	3	1314*
CAMPBELL, C	AMCRP	0	2	0	1186	FABIJONAS, R	EXCAL	2	2	0	1762D
CAMPBELL, D	AMOCO	1	1	1	0000?	FAHRENHOLTZ, S	MTRLA	0	0	0	1739#
CARTER, D	JCASE	0	1	1	1081*	FELDMAN, A	FLPRO	1	5	0	1398
CARTER, L	PSTOF	4	1	1	1555	FELICIANO, H	PSTOF	0	0	0	0000?
CHACHERE, L	INDNS	0	0	0	2362	FILICHIA, T	KEMPR	1	1	0	0000?
CHAN, H	SEARS	0	2	1	1571	FIPPINGER, P	WHEAT	0	1	0	0000?
CHARKOVSKY, R	SECST	5	1	2	1726*	FISCHLER, M	FERMI	0	0	0	1337
CHESBROUGH, C	CRT	0	0	0	0000?	FLYNN, T	INDNS	1	1	0	0000?
CHEVERESAN, S	UOP	3	2	0	1412	FRAATS, D	CONBK	0	4	2	1853

? - UNRATED
- 5 TO 9 RATED GAMES
* - 10 TO 24 RATED GAMES

C - CENTURY CLUB MEMBER
D - DOUBLE CENTURION

NAME	TEAM	W	L	D	RATING	NAME	TEAM	W	L	D	RATING
FRANEK, M	SECST	2	2	4	1843	ISAAC, T	PSTOF	0	0	0	1667
FRANK, M	MERC	0	2	2	0000?	JACOBS, N	DRGNS	4	0	0	1969C
FRANTZIS, G	MERC	0	0	0	0000?	JAKSTAS, K	NORTH	3	2	0	2201
FREY, M	FERMI	0	0	0	0000?	JASAITIS, A	CRT	2	1	5	2133
FRIDRICH, C	MTRLA	0	0	0	1427#	JONES, B	ROCKW	2	0	3	2147
FRIESEMA, W	CRT	4	2	1	2015*	KALE, S	JCASE	1	3	2	1469*
FRISKE, T	EXCAL	2	4	0	1875	KALIHHER, C	FERMI	3	1	1	1903
GAINES, I	FERMI	3	0	1	1731C	KANAS, W	JCASE	0	3	2	1265
GAMEZ, M	JCASE	1	2	0	0000?	KARGE, W	KEMPR	0	0	0	1269
GARLAND, G	KEMPR	0	0	0	1694	KARLOVICS, S	EXCAL	0	0	0	1820C
GAVIN, L	MERC	0	6	0	1237	KELLOGG, K	KNGHT	4	1	0	1684C
GELBART, S	SECST	0	0	1	2272	KELLY, S	ROYLS	0	0	0	1339*
GIBSON, K	AMCRP	0	1	0	0000?	KLEIN, P	NORTH	0	0	0	0000?
GILES, M	SEARS	1	0	1	2473	KLINEFELTER, H	JCASE	3	2	1	1484
GLICENSTEIN, J	FERMI	1	1	3	1946	KNUTSON, G	KEMPR	0	0	0	0000?
GOLLA, R	SEARS	4	0	0	2043C	KOEPELE, J	TYROS	0	1	0	0000?
GOLUMBOVSKI, P	NORTH	2	1	2	2055*	KOZLOVSKY, M	FERMI	2	1	0	2305*
GONCHAROFF, N	MTRLA	2	1	0	1768D	KRAKAU, H	EXMPL	2	0	1	1962
GREEN, D	KNGHT	0	1	0	1811C	KRAS, T	ALUMN	0	0	0	2262
GREGORY, J	PSTOF	3	2	0	2197	KRULL, E	AMCRP	2	2	1	1394*
GROTANS, G	MERC	0	5	0	0000?	KUEHLHORN, B	MTRLA	0	0	0	0000?
GRYPARIS, J	MTRLA	0	2	0	1359	KUKES, S	AMOCO	2	1	0	2326#
GUILLEN, B	KEMPR	0	2	0	0000?	KUMRO, D	CHRGR	1	6	1	1687D
GUIDO, J	ROYLS	2	1	3	2162	LANNOYE, D	WALGR	0	0	0	1698*
GUTNIK, I	JCASE	0	1	0	0000?	LASKY, J	RADIO	2	2	0	1412
HAHNE, D	ROYLS	0	2	4	1560	LASKY, JIM	RADIO	1	0	0	1712#
HAMILTON, L	AMCRP	1	4	0	0000?	LASKY, N	RADIO	1	3	1	1467
HAMMOND, M	CONBK	5	2	0	1377*	LATIMER, E	SEARS	2	4	1	2003D
HARRINGER, R	TYROS	0	0	0	1619C	LEE, A	CRT	0	0	0	0000?
HARRIS, F	SEARS	0	1	0	0000?	LEE, R	TYROS	1	1	0	0000?
HARRIS, R	FERMI	0	1	0	1578	LEMPA, K	SECST	1	0	0	1524*
HERNANDEZ, D	MTRLA	1	2	0	1493	LEONG, D	SECST	0	0	0	1945*
HERSHEY, S	MTRLA	0	0	0	0000?	LEONG, G	EXCAL	0	0	0	2072C
HERZOG, W	NORTH	0	0	0	0000?	LESTER, M	MTRLA	1	0	0	1588
HESS, B	FLPRO	1	2	0	1519	LEVINE, D	KNGHT	3	0	1	2371
HICKS, C	ROYLS	5	1	0	1471	LITVINAS, A	ALUMN	4	3	1	1738C
HILL, R	KNGHT	5	1	0	1634	LLOYD, K	PSTOF	0	0	0	0000?
HILLIARD, J	CONBK	0	1	0	0000?	LODER, S	INDNS	2	0	0	0000?
HILTON, J	MERC	0	4	0	0000?	LORING, S	CONBK	1	0	0	2004
HODINA, J	AMCRP	2	4	0	2013	LOSOFF, A	CRT	3	3	1	1954
HOLM, B	AMOCO	0	0	0	1740	LUDWIG, T	INDNS	2	1	3	2148
HORNER, L	CRT	0	0	0	0000?	MANILLA, M	AMOCO	2	0	0	0000?
HOWARD, W	PSTOF	3	0	1	1123#	MARCOWKA, R	PSTOF	6	2	0	2026C
HUGHES, N	KEMPR	0	0	1	1847C	MATHEWS, B	CRT	0	0	0	0000?
HUMPF, R	RADIO	0	1	0	1293*	MATHUR, P	ROYLS	0	0	0	1316#
HUNG, N	MTRLA	1	0	0	0000?	MCFARLIN, B	KEMPR	0	2	0	0000?
HUTTAR, C	SECST	0	0	1	2016	MCGRIFF, M	RADIO	0	4	0	1410
ILANGA, R	FLPRO	0	0	0	2023*	MCINTOSH, S	CONBK	2	1	0	1106#
INUMERABLE, F	PSTOF	3	0	2	2211	MCFARLIN, B	KEMPR	0	0	0	0000?
ISAAC, G	CRT	0	0	0	0000?	MCFARLIN, B	KEMPR	0	0	0	0000?

? - UNRATED
 # - 5 TO 9 RATED GAMES
 * - 10 TO 24 RATED GAMES
 C - CENTURY CLUB MEMBER
 D - DOUBLE CENTURION

NAME	TEAM	W	L	D	RATING	NAME	TEAM	W	L	D	RATING
MCFARLIN, B	KEMPR	0	0	0	1604#	REED, L	PSTOF	0	0	0	1735#
MCPHAIL, C	TYROS	2	1	0	0000?	REHORST, R	FLPRO	0	3	0	0000?
MCQUINN, J	ROCKW	3	2	1	1562	REID, C	JCASE	1	2	1	1264
MERTENS, P	NORTH	0	0	0	0000?	REID, D	MERC	0	1	0	0000?
MICKLICH, F	UOP	4	1	1	1820C	RENNER, T	AMOCO	0	0	0	1631
MIKULECKY, B	RADIO	1	5	0	1312	REVULURI, K	MTRLA	0	2	0	0000?
MILLER, J	NORTH	0	0	0	0000?	REYES, R	SEARS	4	0	3	2299C
MILLER, TT	SEARS	2	3	0	0000?	RIEDERER, D	CRT	1	4	0	1115#
MITCHAM, L	ROCKW	1	1	2	0000?	RINGENBERG, T	AMOCO	0	3	0	1343*
MOLES, J	MTRLA	0	2	0	1195	RIPPE, D	TYROS	0	2	0	0000?
MOODY, L	CONBK	0	2	0	0000?	RO, D	CRT	1	5	0	1502*
MORGAN, T	MTRLA	0	1	0	0000?	ROGERS, N	PSTOF	3	1	1	1983*
MORTON, B	SEARS	2	1	2	1612*	ROSE, J	FERMI	0	0	0	1972
MOTYCKA, R	JCASE	0	3	0	1228	ROSE, K	AMOCO	2	0	1	1975
MUNOZ, A	INDNS	0	0	0	1247	ROSEN, JJ	FERMI	1	0	0	0000?
NELSON, H	CONBK	3	2	0	1962	ROSING, G	EXCAL	2	2	0	1467*
NELSON, R	WHEAT	2	0	0	0000?	ROSLEY, D	ROYLS	2	1	0	1845
NWABUDE, O	ROYLS	0	0	0	0000?	RUDY, J	MERC	0	1	0	1244*
O' DELL, DW	RADIO	0	5	2	1612	RZESZUTKO, R	SECST	1	2	5	1942
OELHAFEN, A	EXMPL	1	3	0	1316*	SAGALOVSKY, L	ROOKS	0	0	0	1911
OGASAWARA, L	MTRLA	3	0	2	1872	SAJBEL, P	UOP	4	2	0	1663
OGASAWARA, R	MTRLA	1	0	0	1604D	SAJKOWSKI, D	AMOCO	1	1	2	1904
OLSEN, A	KEMPR	0	2	0	0000?	SAMELSON, C	MTRLA	1	2	0	2059C
OLUND, P	MTRLA	2	1	0	1360#	SATCHELL, E	WHEAT	0	0	0	1491#
ORCUT, J	CRT	0	0	0	0000?	SATTERLEE, D	JCASE	1	2	2	1608
OSTERLUND, R	EXCAL	4	1	1	1894	SCHATTKE, N	AMOCO	0	2	0	0000?
OTAKAN, V	FLPRO	0	1	0	0000?	SCHULMAN, R	EXMPL	2	1	0	1925C
PAKASKI, A	KEMPR	0	0	0	0000?	SCHUTE, E	MERC	0	0	0	0000?
PARA, A	FERMI	3	1	0	0000?	SCHWARTZ, M	TYROS	1	0	2	1081#
FARADAN, E	CONBK	4	4	2	1762	SCHWARTZ, S	SEARS	2	1	4	1719C
PATEL, R	CONBK	0	3	0	1443*	SECHLER, M	WHEAT	0	0	0	0000?
PAWLUS, D	MTRLA	0	0	0	0000?	SEEGER, S	WHEAT	0	0	1	0000?
PEEL, M	WALGR	0	0	0	1902	SHACHTER, J	INDNS	0	0	0	1569
PEIJFFERS, S	INDNS	0	0	0	1990	SHAFF, R	TYROS	2	1	1	1546C
PETERS, P	FLPRO	0	3	0	1112*	SHEU, G	INDNS	2	1	0	1269*
PETWAY, L	PSTOF	3	3	0	1509*	SIEGEL, R	CONBK	3	2	2	1530
POLIZZANO, S	WHEAT	0	2	0	0000?	SIMS, B	CRT	0	1	0	0000?
POMA, D	AMOCO	0	1	0	0000?	SIWEK, M	KEMPR	4	1	1	2169
POTTS, S	WHEAT	0	1	0	0000?	SKULSKI, I	EXMPL	3	1	1	1840
POYNOR, D	WHEAT	1	2	0	0000?	SLUSSER, C	CRT	0	0	0	0000?
PUECHNER, R	KEMPR	0	1	0	0000?	SMILEY, R	AMCRP	2	0	1	1959
PULTS, J	AMOCO	2	1	2	1814*	SMITH, JM	SECST	1	4	1	1196*
PYLES, C	WHEAT	2	3	0	1294#	SNELLING, C	PSTOF	0	0	0	0000?
RADAVICIUS, E	CHRGR	3	2	2	1713C	SOMASUNDARAM, S	TYROS	0	0	0	0000?
RADEMACHER, H	MTRLA	0	0	0	0000?	SOMBONG, M	CONBK	5	4	2	1751
RADULSKI, R	TYROS	0	1	0	0000?	SOPRYCH, T	AMCRP	2	2	1	1640
RAFACZ, T	ROCKW	2	3	0	1623	SPIEGEL, L	FERMI	3	2	2	2091
RAFACZ, W	ROCKW	1	5	1	1626	SPLIT, B	MERC	0	0	0	0000?
RAVANAM, S	JCASE	0	0	0	1219*	STAMM, V	CHRGR	2	1	1	1727D
REDEY, E	KNIGHT	0	0	0	1025*	STEMPINSKI, P	NORTH	2	4	0	1469

? - UNRATED

- 5 TO 9 RATED GAMES

* - 10 TO 24 RATED GAMES

C - CENTURY CLUB MEMBER

D - DOUBLE CENTURION

NAME	TEAM	W	L	D	RATING	NAME	TEAM	W	L	D	RATING
STEVANOVIC, M	UOP	3	1	1	2253C	VELAYUTHAM, S	TYROS	1	1	0	1305#
STINSON, M	INDNS	2	0	1	2028	VIGANTS, A	NORTH	4	1	0	1638
STOLTZ, B	TYROS	1	1	1	1936	VOLOSHIN, G	WALGR	0	0	0	1636#
STUHLBARG, D	UOP	2	1	0	1531C	WALHOUT, P	WHEAT	1	3	2	2121
SUERTH, F	EXMPL	2	4	0	1577	WALKER, R	FERMI	0	0	0	1376C
SUH, G	AMOCO	0	0	2	0000?	WALSH, W	ROOKS	0	0	0	1503C
SULLIVAN, C	MERC	2	4	0	1590#	WARD, C	DRGNS	3	2	1	1611D
SULLIVAN, J	EXCAL	4	2	0	2003C	WEARY, M	MTRLA	0	0	0	0000?
SVOBODA, D	MTRLA	0	0	0	0000?	WEILAND, S	WALGR	0	0	0	1112#
SWIDERSKI, M	CHRGR	2	2	0	1351C	WEISNER, T	RADIO	0	2	0	1146
SZAUKELLIS, W	MTRLA	1	1	0	0000?	WEITZ, R	FLPRO	1	4	0	1838C
TASKER, I	ROOKS	0	0	0	1453*	WENTLING, C	AMCRP	2	1	0	1520
TATARSKY, J	KEMPR	2	3	0	1438#	WEST, R	MTRLA	3	0	0	0000?
TAYLOR, F	WHEAT	0	4	2	1231*	WHITE, H	JCASE	1	4	1	1759
TEGEL, F	DRGNS	3	2	1	2168D	WHITSITT, S	DRGNS	1	1	1	1571*
THOMAS, G	TYROS	1	3	2	1415	WIENCEK, T	KNIGHT	0	0	0	1239*
THOMAS, J	CHRGR	2	3	1	1548C	WIENS, P	WHEAT	2	3	1	1387
THOMPSON, M	AMOCO	0	0	0	1390*	WILLIAMS, B	WALGR	0	0	0	0000?
THOMPSON, R	FLPRO	0	3	0	1044	WINSTON, H	SECST	3	2	0	1995
TOGAMI, F	JCASE	0	0	0	1173*	WIRTSCHAFTER, D	ALUMN	4	1	0	2096
TOMCHEK, W	MTRLA	0	0	0	0000?	WONG, P	EXMPL	2	2	1	2217C
TRAN, D	MTRLA	0	0	0	0000?	WYNARD, D	WHEAT	0	0	0	0000?
TRIPURANENI, D	ROCKW	0	0	0	0000?	WYNN, R	FLPRO	0	0	0	0000?
TRISCHUK, J	FERMI	0	0	0	0000?	YOUNG, C	KNIGHT	0	0	0	1952C
TROPP, W	TYROS	0	2	0	0000?	ZAROMB, S	KNIGHT	1	1	0	1471
TURPIN, S	INDNS	0	2	0	0000?	ZEIDEL, J	MERC	0	1	2	1985
TUSSING, D	KNIGHT	0	0	0	0000?	ZHANG, L	AMOCO	0	0	0	0000?
UNDERWOOD, W	WHEAT	1	2	0	1957C	ZIMMERMAN, T	TYROS	1	1	0	0000?
VAN MEER, J	KEMPR	1	0	0	1901	ZOELLNER, J	CONBK	3	8	2	1190
VAN ZILE, C	UOP	1	1	1	1375#						

? - UNRATED

- 5 TO 9 RATED GAMES

* - 10 TO 24 RATED GAMES

C - CENTURY CLUB MEMBER

D - DOUBLE CENTURION