

Chicago Industrial Chess League

Bulletin 4 Volume 34

January, 1991

A revised list of team captains for the East and Far West divisions appear in this issue. Team captains in these divisions should please take note since there are changes in names and telephone numbers on both lists.

Anyone who wishes to have a proposal considered at the next league meeting should consider sending a written copy to me for publication soon. Our next business meeting will likely occur around mid-April. This leaves three more issues of this bulletin remaining in which proposals or matters can be reviewed by the league membership before the team captains and officers meet. As our league president, Ross Siegel, pointed out in a footnote to the minutes of the league meeting which occurred last August, numerous matters can be discussed and acted upon more expeditiously at these meetings if they are presented in writing well beforehand. I might also add that team captains that are planning either to represent their teams at the next meeting or have someone else do so should watch for any proposals published in the bulletin and be prepared to vote on them if applicable.

Because of the relatively large turnout for the last business meeting, we are assuming that the Oak Park location is more convenient than other locations used in the recent past. Therefore, an attempt will be made to obtain use of the Oak Park Village Hall for the spring business meeting.

--Bulletin Editor - Marty Franek, Alumni Second Stringers

1990 CACL EAST DIVISION TEAM CAPTAIN LIST
(UPDATED) *

Alumni (ALUMN)

Marvin Cox
(708) 422-1878
4900 W. 96th st.
Oak Lawn IL. 60453

Chicago Reserch and Trading (CRT)

Tony Jasaitiis
(W) 431-2966
440 S. LaSalle
Chicago IL.60605

* PLEASE NOTE CHANGES IN NAMES,
ADDRESSES OR PHONE NUMBERS
(JOHN & RUBEN SORRY)

Chicago Mercantile Exchange (MERC) *

Larry Gavin
(W) 930-3095
30 S. Wacker
Chicago IL. 60606

Amoco (AMCRP) *

James Hodina
(W)856-2247
225 N. Michigan
P.O.Box 7513
Chicago IL. 60680

Alumni 2nd Stringers (SECST) *

Russ Rzeszutko
(W)408-5613
or ALTERNATE
Bob Charkovsky
(W)732-6528

Continental Bank (CONBK) *

John Zoellner
(W) 923-6798
3810 N. Mozart
Chicago IL. 60618

Sears (SEARS) *

Ruben Reyes
(W)875-7090
D/704F,BSC 47-15
Sears Tower
Chicago IL. 60684

Chicago Post Office (PSTOF) Also East Division Chairman.

Please send game results to.
William Cooper
(W) 765-3493 (H) 763-1567
7035 W. Inlay
Chicago IL. 60631

Far West Teams 1990-91

Division Chairman:	Irwin Gaines Fermilab MS127 PO Box 500 Batavia, IL 60510	W: 840-4022 H: 420-1452
--------------------	---	----------------------------

<u>Team</u>	<u>Captain</u>	<u>Phone</u>
Amoco Labs (AMOCO)	John Pults Amoco Research Center PO Box 400 Naperville, IL 60566	W: 420-3813 H: 682-4677
Bell Labs (INDNS)	Eric Blackmon Room IH 4K-422 AT&T Bell Labs 2000 N Naperville Rd Naperville, IL 60566	W: 979-5127 H: 416-3133
Fermilab (FERMI)	Leonard Spiegel Fermilab MS 219 PO Box 500 Batavia, IL 60510	W: 840-2809 H:
Wheaton College (WHEAT)	Peter Walhout CPO Box 3049 Wheaton College Wheaton, IL 60187	W: 260-5160
AT&T Technologies (TYROS)	Joe Blazie AT&T Network Systems 2600 Warrenville Road Lisle, IL 60532	W: 510-7335

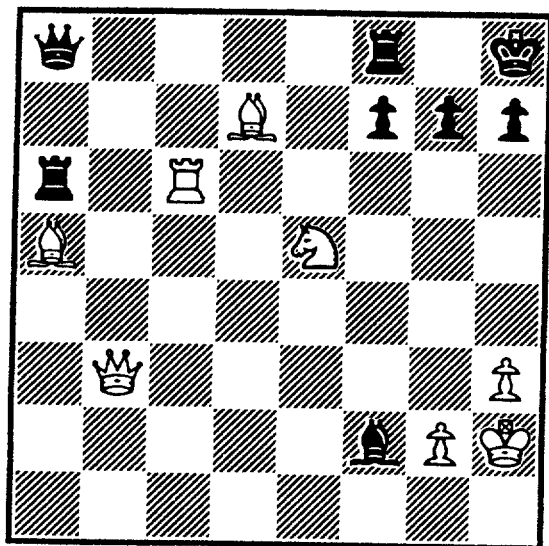
*AML Rocks have dropped out for
this year. This is the up-to-date
list of captains*

Ann

THE TWO SQUARES COLUMN

by Marvin Cox

"If two (or more) squares are attacked more times than they are defended they may fall."

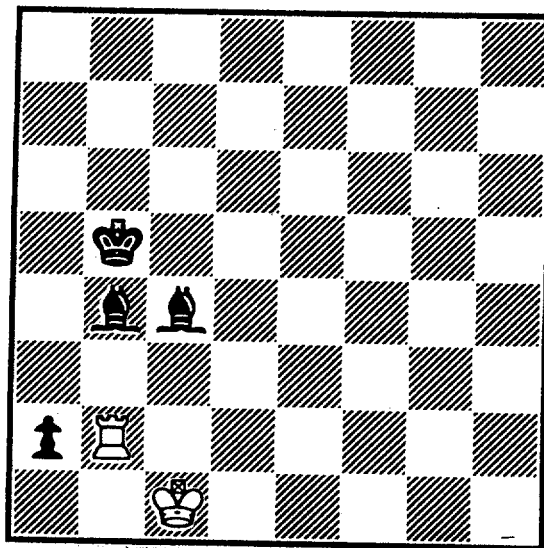


What are the 3-squares? Obviously b8, a6 and f7 are attacked by three pieces and guarded by only two. Are you familiar with the position called "Philidor's Legacy"? In the diagram above, black had the unpleasant choices of losing the rook outright, or of permitting mate by Qb8, or of permitting Philidor's Legacy.

1. R:a6 Q:a6
2. N:f7ch Kg8
3. Nh6 dis ch Kh8
4. Qg8 ch R:g8
5. Nf7 mate

My uncle always cautioned me not to use a trap in the hope of a blunder, but to restrict the mobility of my opponent. If I can use a trap to prevent my opponent from making what would otherwise be his best move he must necessarily make an inferior move. And if I can do this with every move he must make a succession of inferior moves and thereby cause his game to deteriorate. Incidentally, a complicated game is the natural

result of each player having made several inferior moves.



White is obviously in trouble. If he does nothing, the pawn will queen. If he captures the pawn he will lose in a two bishops ending. Let's examine the position from a 2-squares viewpoint. Square a1 can be attacked by the white king if the latter can gain a tempo. This square can only be guarded by the black bishop on b4. This bishop is attacked by the white rook and guarded only by the black king. Thus, the 2-squares a1 and b4 are attacked twice by white and guarded once by black. So, these 2-squares may fall:

1. R:b4 ch K:b4
2. Kb2 Draw

Black cannot control the queening square. My uncle says the 2-squares approach is versatile. It can be used to gain material, produce checkmate, queen a pawn, save a game by perpetual check or stalemate, or to obtain an endgame having a positional advantage.

NEAR WEST DIVISION

December 22, 1990

Chairman, Dan Kumro

In a recent match (this current season), a dispute was noted regarding player ranking. The teams involved were: A & B Radio and J.I. Case.

A & B Radio played a player on board 2 with more than a 100 point plus rating below the player that was listed on board 1.

Due to the fact that there is no published penalty (when this takes place) in our current policies, the following will be adhered to in the Near West Division.

1. The protest can be filed against the infringing team captain as long as there is one game remaining. However, if the match is 100% complete, it will be considered too late to file a protest regarding player ranking.
2. Penalty invoked. When the infringing captain refuses to change or alter his line-up prior to the start of the match and the match begins and the complaining captain files a protest, the penalty will be as follows:

The mis-ranked player will forfeit his game and it will become a loss. However, if it already is a loss then the board below will become a loss, etc.

Example:

TEAM A				versus	TEAM B			
Rating	Player	(a)	(b)	(a)	Player	Rating	*Penalty (b)	
1700	C	0	0	1	J	1320	1	
1620	D	1	1	0	K**	1470	0	
1580	E	0	1	1	L	1300	0*	
1530	F	1	1	0	M	1260	0	
1410	G	0	0	1	N	1210	1	
1280	H	$\frac{1}{2}$	$\frac{1}{2}$	$\frac{1}{2}$	R	1180	$\frac{1}{2}$	
		$2\frac{1}{2}$	$3\frac{1}{2}$	$3\frac{1}{2}$			$2\frac{1}{2}$	

**Mis-ranked Player (b) after penalty is invoked

Therefore, Team B who was the original winner now loses the match after the penalty!

CHAIRMAN'S NOTE:

It becomes a little involved when the mis-ranked player's game ends in a draw! The penalty involved will always be a minimum of 1 game results reversed. If there are any questions, please call DAN KUMRO (708) 259-4981

P.S. The player ranking infringement should be a rare occurrence since in the past most infringements were settled prior to the start of the match, as long as one of the captains had a bulletin with player ratings.

ALUMNI 2nd STRINGERS (Visitors) vs. SEARS (Home)
Round 1 Board 1 October 23, 1990
(annotated by USCF Master Sheldon Gelbart)

Franco-Sicilian

White: Harold Winston

Black: Ed Latimer

- 1. e4 c5
- 2. c3 g6
- 3. d4 b6
- 4. Bc4

I prefer Nf3 and developing the prelate at e2 or d3.

- 4. ... e6
- 5. Nf3 Bg7

More to the point is Bb7 followed by Nf6 contesting the e4 square. Black tries to provoke e5 intending to pressure the center with d6 at his convenience.

- 6. O-O Ne7
- 7. Bf4 O-O

Safer is 7. ... d6 or d5.

- 8. Qd2
- White could win a pawn here by 8. dc followed by Bd6. (If 8. ... Na6 then 9. Qe2 - ed.)

- 8. ... Re8
- 9. Na3 a6
- 10. Nc2

I prefer 10. dc bc 11. Bd6 Qb6 12. Be2 instending Nc4.

- 10. ... Bb7
- 11. Rfe1 d5
- 12. Bd3 c4

Black should play 12. ... de 13. B:e4 B:e4 14. R:e4 cd followed by Nbc6.

- 13. Bf1

- 13. b4
- Allowing transposition into an "Advanced French" formation where black ends up in a bind. Possible was 13. ...de 14. Ng5 b4 15. N:e4 e5 16. Bg3 ed 17. N:d4 (not 17. Nd6? since dc leaves the knight on d6 pinned) 17. ... Bd5. White is better but Black will eventually play Nbd6 and Qd7 to complete his development.

14. e5 Nd7
15. Bg5 Qb6
16. Qf4 f5

- 14. e5 Nd7
- 15. Bg5 Qb6
- 16. Qf4 f5

I prefer 16. ... f6 17.ef (forced since Bh4 or Bh6 allows g5 winning a piece) 17. ... N:f6 18. B:f6 Rf8. White still has a bind but Black has the two bishops and a reasonable position. (It would seem to me, however, that after 19. Ne5! White wins a pawn in all variations because of all the fork threats on d7. For example, if 19. ... Qc7, then, 20. N:g6 and if 19. ... Qa7 20. Nd7 Rf7 21. R:e6 - ed.)

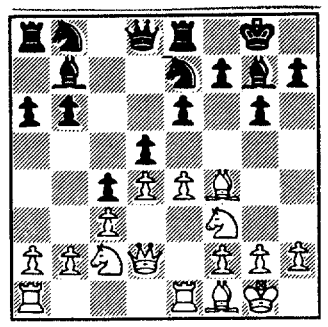
- 17. Qh4 Qd8
- 18. Bh6 Nf8

18. ... Bh8 19. Ng5 Nc6 20. Re3 Qe7 Black is holding. After the move actually played, White wins easily.

- 19. B:g7 K:g7
- 20. Qf6 ch

Black must have overlooked this.

- 20. ... Kh6
- Allows forced mate but I can't query the move since 20. ... Kg8 21. Ng5 Nc6 (otherwise Nf7 and then to Nh6 mates) 22.



Qf7 ch Kh8 23. Q:b7 Na5 24.

Nf7 ch, etc

21. Ng5 Ng8

22. Nf7 ch 1:0

23. Be2 mate would follow.

Ratings Chairman's Report

A third team has now incurred two forfeits on upper boards -- that team is the Second Stringers, of the East Division. This team now joins Rockwell and A&B Radio in having forfeited the right to start a clock in the absence of a player at the start of a match for the remainder of the 1990-91 season. In future matches, if any of their players are not present at the end of the grace period, all three of these teams must shift their lineups upward to fill any empty roster slots, and take forfeits on the lower boards.

Other teams with a single upper board forfeit are: Alumni Central, Sears, and Chicago Research and Trading of the East Division, and the AT&T Chargers in the Near West Division.

NORTH DIVISION 01/02/90

TEAM NAME	W	L	D	GAME	MATCH	PCT
				POINTS	POINTS	
EXEMPLARS	2	0	1	14.0	2.5	0.833
EXCALIBURS	2	1	0	9.0	2.0	0.667
KEMPER INSURANCE	1	1	1	8.0	1.5	0.500
UOP PROCESS DIV.	1	1	0	7.5	1.0	0.500
MOTOROLA	1	1	0	5.5	1.0	0.500
NORTHROP CORP.	1	1	0	5.0	1.0	0.500
FEL-PRO	0	3	0	4.0	0.0	0.000

EAST DIVISION 01/02/90

TEAM NAME	W	L	D	GAME	MATCH	PCT
				POINTS	POINTS	
CHICAGO POST OFFICE	4	0	0	18.0	4.0	1.000
ALUMNI 2ND STRINGERS	3	1	0	16.5	3.0	0.750
CONTINENTAL BANK	2	2	1	14.5	2.5	0.500
ALUMNI CENTRAL	2	2	0	13.5	2.0	0.500
CHICAGO RES. & TRDG.	1	2	1	9.5	1.5	0.375
SEARS	1	3	0	12.0	1.0	0.250
CHICAGO MERC. EXCH.	1	3	0	6.0	1.0	0.250
AMOCO CORP.	1	2	0	6.0	1.0	0.333

NEAR WEST DIVISION 01/02/90

TEAM NAME	W	L	D	GAME	MATCH	PCT
				POINTS	POINTS	
ARGONNE KNIGHTS	5	0	0	23.0	5.0	1.000
BELL LABS DRAGONS	3	1	0	14.5	3.0	0.750
ROCKWELL INT'L	2	3	0	12.5	2.0	0.400
AT&T CHARGERS	2	2	0	11.0	2.0	0.500
BELL LABS ROYALS	1	2	0	10.0	1.0	0.333
A & B RADIO	1	3	0	7.5	1.0	0.250
J. I. CASE	0	3	0	5.5	0.0	0.000

FAR WEST DIVISION 01/02/90

TEAM NAME	W	L	D	GAME	MATCH	PCT
				POINTS	POINTS	
FERMILAB	2	0	0	8.5	2.0	1.000
WHEATON COLLEGE	1	1	0	5.0	1.0	0.500
AMOCO RESEARCH LABS	0	1	0	2.5	0.0	0.000
AT&T TYROS	0	1	0	2.0	0.0	0.000
BELL LABS INDIANS	0	0	0	0.0	0.0	0.000

01-NOV-90 AMOCO CORP.				1	SEARS	5		
ROUND 2 BD				RATINGS	SCORE	RATINGS	SCORE	
1	HODINA, J	2012	-3	0	GILES, M	2481	3	1
2	ATKINSON, J	1897	-4	0	REYES, R	2294	3	1
3	KRULL, E	1301	40	1	CHAN, H	1653	-40	0
4	HAMILTON, L	0	0	0	MORTON, B	1581	0	1
5	CAMPBELL, C	1192	0	0	MILLER, TT	0	0	1
6		0	0	0F	WONG, A	1278	0	1F
13-NOV-90 CHICAGO MERC. EXCH.				3.5	SEARS	2.5		
ROUND 3 BD				RATINGS	SCORE	RATINGS	SCORE	
1	ZEIDEL, J	1987	17	.5	REYES, R	2297	-11	.5
2	GAVIN, L	1240	0	0	LATIMER, E	2040	0	1
3	REID, D	0	0	0	SCHWARTZ, S	1734	0	1
4	GROTANS, G	0	0	1F	CHAN, H	1613	0	0F
5	SULLIVAN, C	0	0	1	MILLER, TT	0	0	0
6	COTE, J	0	0	1	HARRIS, F	0	0	0
13-NOV-90 ALUMNI CENTRAL				6	CHICAGO RES. & TRDG.	0		
ROUND 2 BD				RATINGS	SCORE	RATINGS	SCORE	
1	CZERNIECKI, A	2294	9	1	JASAITIS, A	2155	-14	0
2	WIRTSCHAFTER, D	2064	19	1	FRIESEMA, W	2004	-19	0
3	COX, M	2000	0	1F	LOSOFF, A	2003	0	0F
4	BRONFELD, A	1854	6	1	RO, D	1535	-6	0
5	LITVINAS, A	1828	0	1	RIEDERER, D	0	0	0
6	BROTSOS, J	1602	0	1	DENG, J	0	0	0
15-NOV-90 ALUMNI 2ND STRINGERS				5.5	CHICAGO MERC. EXCH.	.5		
ROUND 2 BD				RATINGS	SCORE	RATINGS	SCORE	
1	RZESZUTKO, R	1940	1	1	GAVIN, L	1240	-1	0
2	FRANEK, M	1833	0	.5	FRANK, M	0	0	.5
3	BEARD, G	1807	0	1	HILTON, J	0	0	0
4	CHARKOVSKY, R	1744	0	1	SULLIVAN, C	0	0	0
5	LEMPA, K	1524	0	1	COTE, J	0	0	0
6	SMITH, JM	1245	0	1	GROTANS, G	0	0	0
23-OCT-90 CHICAGO RES. & TRDG.				2	CHICAGO POST OFFICE	4		
ROUND 3 BD				RATINGS	SCORE	RATINGS	SCORE	
1	JASAITIS, A	2141	4	.5	INUMERABLE, F	2196	-4	.5
2	FRIESEMA, W	1985	25	1	MARCOWKA, R	2025	-17	0
3	LOSOFF, A	2003	-1	.5	ROGERS, N	1997	1	.5
4	RO, D	1529	-11	0	COOPER, W	1735	11	1
5	BERNARD, D	1107	-4	0	PETWAY, L	1533	4	1
6	RIEDERER, D	0	0	0	HOWARD, W	1101	0	1
7	DENG, J	0	0	0	CARTER, L	1522	0	1
08-NOV-90 AMOCO CORP.				4	CONTINENTAL BANK	2		
ROUND 4 BD				RATINGS	SCORE	RATINGS	SCORE	
1	HODINA, J	2009	15	1	FRAATS, D	1889	-15	0
2	SMILEY, R	1930	0	1	DYCKOWSKI, R	0	0	0
3	ATKINSON, J	1893	-28	0	PARADAN, E	1801	28	1
4	KRULL, E	1341	-3	0	SOMBONG, M	1775	3	1
5	HAMILTON, L	0	0	1	PATEL, R	1490	0	0
6	SOPRYCH, T	1640	3	1	ZOELLNER, J	1157	-3	0
7	WENTLING, C	1528	-37	0	HAMMOND, M	1264	37	1

21-NOV-90 CONTINENTAL BANK				ALUMNI CENTRAL			
ROUND 3 BD				ROUND 3 BD			
	RATINGS	SCORE		RATINGS	SCORE		
1 PARADAN, E	1829	-3	0	CZERNIECKI, A	2303	2	1
2 NELSON, H	1890	29	1	COX, M	2000-29		0
3 SOMBONG, M	1778	26	1	LITVINAS, A	1828-26		0
4 SIEGEL, R	1506	18	.5	BRONFELD, A	1860-18		.5
5 DYCZKOWSKI, R	0	0	.5	BROTSOS, J	1602	0	.5
6 ZOELLNER, J	1154	0	1F		0	0	OF

29-NOV-90 ALUMNI 2ND STRINGERS				AMOCO CORP.			
ROUND 3 BD				ROUND 3 BD			
	RATINGS	SCORE		RATINGS	SCORE		
1 WINSTON, H	2000	24	1	HODINA, J	2024-24		0
2 RZESZUTKO, R	1941	-1	.5	SMILEY, R	1930	1	.5
3 FRANEK, M	1833	3	.5	ATKINSON, J	1865	-3	.5
4 BEARD, G	1807	13	1	SOPRYCH, T	1643-13		0
5 CHARKOVSKY, R	1744	4	1	KRULL, E	1338	-4	0
6 DAVIDSON, M	1616	0	1	HAMILTON, L	0	0	0
7 SMITH, JM	1245-28		0	ZOELLNER, J	1154	28	1 (CONBK)

04-DEC-90 SEARS				ALUMNI CENTRAL			
ROUND 4 BD				ROUND 4 BD			
	RATINGS	SCORE		RATINGS	SCORE		
1 GILES, M	2484-11		.5	CZERNIECKI, A	2305	7	.5
2 REYES, R	2286	7	1	WIRTSCHAFTER, D	2083-11		0
3 LATIMER, E	2040-18		0	COX, M	1971	27	1
4 BROCKETT, M	1831-22		0	BRONFELD, A	1842	22	1
5 SCHWARTZ, S	1734-12		0	LITVINAS, A	1802	18	1
6 MORTON, B	1581	24	1	BROTSOS, J	1602-16		0

04-DEC-90 CHICAGO RES. & TRDG.				CHICAGO MERC. EXCH.			
ROUND 4 BD				ROUND 4 BD			
	RATINGS	SCORE		RATINGS	SCORE		
1 JASAITIS, A	2145	-9	.5	ZEIDEL, J	2004	9	.5
2 FRIESEMA, W	2010	0	1	FRANK, M	0	0	0
3 LOSOFF, A	2002	1	1	GAVIN, L	1239	-1	0
4 RO, D	1518	0	1	GROTANS, G	0	0	0
5 BERNARD, D	1103	0	0	SULLIVAN, C	0	0	1
6 DENG, J	0	0	1	HILTON, J	0	0	0

12-DEC-90 CHICAGO MERC. EXCH.				CONTINENTAL BANK			
ROUND 5 BD				ROUND 5 BD			
	RATINGS	SCORE		RATINGS	SCORE		
1 ZEIDEL, J	2013-28		0	NELSON, H	1919	28	1
2 FRANK, M	0	0	.5	FRAATS, D	1874	0	.5
3 GAVIN, L	1238	0	0	DYCZKOWSKI, R	0	0	1
4 SULLIVAN, C	0	0	0	PARADAN, E	1826	0	1
5 GROTANS, G	0	0	0	SOMBONG, M	1804	0	1
6 COTE, J	0	0	0	SIEGEL, R	1524	0	1
(CONBK) 7 HAMMOND, M	1301	0	0	MCINTOSH, S	0	0	1
(CONBK) 8 ZOELLNER, J	1182-15		0	HAMMOND, M	1301	15	1

18-DEC-90 CHICAGO POST OFFICE				4	ALUMNI 2ND STRINGERS				2
ROUND 4 BD				RATINGS	SCORE		RATINGS	SCORE	
1	GREGORY, J	2207	8	1	RZESZUTKO, R	1940	-8	0	
2	INUMERABLE, F	2192	0	1F	WINSTON, H	2024	0	0F	
3	ROGERS, N	1998	0	1F	LEONG, D	1945	0	0F	
4	MARCOWKA, R	2008	8	1	FRANEK, M	1836-12		0	
5	COOPER, W	1746-18		0	BEARD, G	1820	18	1	
6	CARTER, L	1522-10		0	CHARKOVSKY, R	1748	10	1	
28-NOV-90 A & B RADIO				1.5	ARGONNE KNIGHTS				4.5
ROUND 4 BD				RATINGS	SCORE		RATINGS	SCORE	
1	BOOKER, G	0	0	0	BERRY, G	2096	0	1	
2	O'DELL, DW	1629	7	.5	BAURAC, D	1729	-4	.5	
3	ELLERY, G	1475-11		0	KELLOGG, K	1674	7	1	
4	MCGRIFF, M	1466-15		0	HILL, R	1587	15	1	
5	MIKULECKY, B	1357-10		0	CHIU, H	1579	10	1	
6	LASKY, J	1424	23	1	DAWSON, J	1431-23		0	
30-NOV-90 J. I. CASE				1.5	BELL LABS DRAGONS				4.5
ROUND 4 BD				RATINGS	SCORE		RATINGS	SCORE	
1	WHITE, H	1750	-3	0	TEGEL, F	2191	2	1	
2	SATTERLEE, D	1569	18	.5	CHRISTIAN, R	1935-18		.5	
3	KALE, S	1425	-6	0	DURKEE, D	1745	6	1	
4	KLINEFELTER, H	1451-13		0	WARD, C	1600	9	1	
5	KANAS, W	1254	18	.5	WHITSITT, S	1612-18		.5	
6	REID, C	1252	3	.5	BECKLEY, S	1294	-3	.5	
7	GAMEZ, M	0	0	0	KLINEFELTER, H	1438	0	1 (JCASE)	
11-DEC-90 AT&T CHARGERS				4.5	ROCKWELL INT'L				1.5
ROUND 4 BD				RATINGS	SCORE		RATINGS	SCORE	
1	STAMM, V	1702	0	0F	JONES, B	2137	0	1F	
2	KUMRO, D	1717	0	.5	MITCHAM, L	0	0	.5	
3	RADAVICIUS, E	1690	14	1	RAFACZ, W	1664-21		0	
4	THOMAS, J	1541	25	1	EFRON, D	1587-25		0	
5	DOBR, K	1522	17	1	MCGUINN, J	1568-25		0	
6	SWIDERSKI, M	1346	16	1	DEWITT, G	1378-25		0	
18-DEC-90 ARGONNE KNIGHTS				4.5	BELL LABS DRAGONS				1.5
ROUND 5 BD				RATINGS	SCORE		RATINGS	SCORE	
1	LEVINE, D	2359	12	1	TEGEL, F	2193	-8	0	
2	BERRY, G	2096	8	1	CHRISTIAN, R	1917-12		0	
3	GREEN, D	1821-10		0	JACOBS, N	1944	10	1	
4	BAURAC, D	1725	1	.5	DURKEE, D	1751	-2	.5	
5	HILL, R	1602	23	1	WARD, C	1609-15		0	
6	CHIU, H	1589	23	1	WHITSITT, S	1594-23		0	
7	ZAROMB, S	1488-34		0	BECKLEY, S	1291	34	1	
19-DEC-90 ROCKWELL INT'L				4	A & B RADIO				2
ROUND 5 BD				RATINGS	SCORE		RATINGS	SCORE	
1	JONES, B	2137	2	1	O'DELL, DW	1636	-2	0	
2	MITCHAM, L	0	0	0	LASKY, JIM	1712	0	1	
3	RAFACZ, W	1643	0	1	BOOKER, G	0	0	0	
4	MCGUINN, J	1543	19	1	LASKY, N	1483-19		0	
5	DEWITT, G	1353	29	1	MCGRIFF, M	1451-29		0	
6	DEZONNO, T	0	0	0	MIKULECKY, B	1347	0	1	

26-NOV-90 FEL-PRO

ROUND 3 BD

			1	EXEMPLARS		5
	RATINGS		SCORE		RATINGS	SCORE
1 WEITZ, R	1832	-4	0	WONG, P	2251	2 1
2 HESS, B	1528	-2	0	CREWSE, L	2098	2 1
3 FELDMAN, A	1418	-2	0	KRAKAU, H	1970	2 1
4 THOMPSON, R	1048	-1	0	SUERTH, F	1646	1 1
5 BAKER, B	1017	-7	0	DELHAFEN, A	1316	7 1
6 PETERS, P	1117	0	1F	EDWARDS, S	1254	0 OF

26-NOV-90 KEMPER INSURANCE

ROUND 3 BD

			2	EXCALIBURS		4
	RATINGS		SCORE		RATINGS	SCORE
1 SIWEK, M	2087	20	1	BUERGER, E	2055-14	0
2 BLOEDOW, P	1491	-3	0	SULLIVAN, J	1975	2 1
3 CUMMUTA, P	1313	44	1	FRISKE, T	1932-44	0
4 TATARSKY, J	1389	-3	0	OSTERLUND, R	1869	3 1
5 PUECHNER, R	0	0	0	ROSING, G	1505	0 1
6	0	0	OF	FABIJONAS, R	1777	0 1F

10-DEC-90 EXCALIBURS

ROUND 2 BD

			5	FEL-PRO		1
	RATINGS		SCORE		RATINGS	SCORE
1 BUERGER, E	2041	7	1	WEITZ, R	1828-10	0
2 SULLIVAN, J	1977	1	1	FELDMAN, A	1416	-2 0
3 FRISKE, T	1888	0	1	BAKER, B	1010	0 0
4 OSTERLUND, R	1872	0	1	THOMPSON, R	1047	0 0
5 FABIJONAS, R	1777	0	1	OTAKAN, V	0	0 0
6	0	0	OF	REHORST, R	0	0 1F

NORTH DIVISION TOP TEN

STEVANOVIC, M	UOP	2254C
WONG, P	EXMPL	2253C
JAKSTAS, K	NORTH	2189
EASTER, R	MTRLA	2144
SIWEK, M	KEMPR	2107
CREWSE, L	EXMPL	2100
BLOOM, B	MTRLA	2094
BOLDINGH, E	UOP	2089*
LEONG, G	EXCAL	2072C
SAMELSON, C	MTRLA	2051C

EAST DIVISION TOP TEN

GILES, M	SEARS	2473
CZERNIECKI, A	ALUMN	2312C
REYES, R	SEARS	2293C
KRAS, T	ALUMN	2262
GREGORY, J	PSTOF	2215
INUMERABLE, F	PSTOF	2192
JASAITIS, A	CRT	2136
WIRTSCHAFTER, D	ALUMN	2072
WINSTON, H	SECST	2024
LATIMER, E	SEARS	2022D

NEAR WEST DIVISION TOP TEN

LEVINE, D	KNIGHT	2371
BENEDEK, R	KNIGHT	2223C
TEGEL, F	DRGNS	2185D
GUIDO, J	ROYLS	2175
JONES, B	ROCKW	2139
BERRY, G	KNIGHT	2104D
BORUM, J	DRGNS	2006
JACOBS, N	DRGNS	1954C
YOUNG, C	KNIGHT	1952C
CHRISTIAN, R	DRGNS	1905C

FAR WEST DIVISION TOP TEN

CHACHERE, L	INDNS	2362
KOZLOVSKY, M	FERMI	2290*
LUDWIG, T	INDNS	2167
WALHOUT, P	WHEAT	2164
SPIEGEL, L	FERMI	2084
STINSON, M	INDNS	1998
BUCHNER, R	INDNS	1991
UNDERWOOD, W	WHEAT	1990C
PEIJFFERS, S	INDNS	1990
ROSE, J	FERMI	1972

MOST IMPROVED PLAYERS

CUMMUTA, P	KEMPR	84
LASKY, J	RADIO	62
CROWE, R	ROYLS	58
NELSON, H	CONBK	57
WINSTON, H	SECST	52
MICKLICH, F	UOP	52
HAMMOND, M	CONBK	52
BOLDINGH, E	UOP	51
HICKS, C	ROYLS	50
CHIU, H	KNIGHT	44

NAME	TEAM	W	L	D	RATING	NAME	TEAM	W	L	D	RATING
ALEMAN, M	AMOCO	0	0	0	0000?	CHRISTIAN, R	DRGNS	2	1	1	1905C
ALMAZAN, S	NORTH	2	0	0	0000?	CHURCHILL, W	INDNS	0	0	0	1762
ANDERSON, CJ	ROYLS	0	2	0	1183#	CIBA, F	SEARS	0	0	1	1406
ANDERSON, N	EXCAL	0	0	0	1782C	CIESLEK, D	MTRLA	1	0	0	2041*
ANGLIN, B	SEARS	0	0	1	1684*	CLARE, B	ROOKS	0	0	0	2185
ANSARI, N	WALGR	0	0	0	1650	CLEMONS, V	AMCRP	0	0	0	0000?
ATKINSON, J	AMCRP	0	2	1	1862	COOPER, J	AMCRP	0	0	0	0000?
AUGSBURGER, L	MTRLA	2	0	0	1780	COOPER, W	PSTOF	3	1	0	1728
BAKER, B	FLPRO	0	2	0	1010	COTE, J	MERC	1	2	0	0000?
BAURAC, D	KNIGHT	2	0	3	1726C	COX, M	ALUMN	1	2	0	1998C
BAYUS, T	MTRLA	0	0	0	0000?	CREWSE, L	EXMPL	1	0	0	2100
BEARD, G	SECST	3	0	0	1838*	CROWE, R	ROYLS	2	1	0	1385*
BECKLEY, S	DRGNS	2	1	1	1325*	CRUZ, R	FLPRO	0	0	0	1418*
BENEDEK, R	KNIGHT	2	0	0	2223C	CUMMUTA, P	KEMPR	3	0	0	1357
BERNARD, D	CRT	1	2	0	1103#	CZERNIECKI, A	ALUMN	3	0	1	2312C
BERRY, G	KNIGHT	2	0	0	2104D	DANELIUK, T	SECST	0	0	0	0000?
BINGLE, J	ROOKS	0	0	0	1481C	DANES, D	ROOKS	0	0	0	0000?
BISH, D	NORTH	1	0	0	0000?	DAVIDSON, M	SECST	1	0	0	1616#
BLACKMON, E	INDNS	0	0	0	1689	DAWSON, J	KNIGHT	1	2	0	1408
BLAZIE, J	TYROS	0	1	0	1777	DECMAN, S	ROOKS	0	0	0	1846C
BLOEDOW, P	KEMPR	1	2	0	1488C	DENG, J	CRT	2	2	0	0000?
BLOOM, B	MTRLA	0	1	0	2094	DEWITT, G	ROCKW	2	2	0	1382
BOHMBACH, J	CRT	0	0	0	1447*	DEZONNO, T	ROCKW	0	1	0	0000?
BOLDINGH, E	UOP	2	0	0	2089*	DIAZ, P	NORTH	0	1	0	1954
BOLLIG, W	NORTH	0	0	0	0000?	DOBR, K	CHRGR	2	1	1	1539D
BOOKER, G	RADIO	0	2	1	0000?	DOBROVOLNY, C	ROYLS	0	1	2	1877*
BORUM, J	DRGNS	0	0	0	2006	DORRIES, T	FERMI	0	0	0	1893*
BRADY, R	CHRGR	2	1	0	1413#	DUNCAN, T	MTRLA	0	1	0	0000?
BRANDT, W	DRGNS	0	0	0	1402*	DURKEE, D	DRGNS	2	1	1	1749C
BRIONES, M	UOP	1	1	0	1678C	DYCZKOWSKI, R	CONBK	2	2	1	0000?
BROCKETT, M	SEARS	0	1	0	1809	EASTER, R	MTRLA	0	1	1	2144
BRONFELD, A	ALUMN	2	1	1	1864	EDWARDS, S	EXMPL	1	0	0	1254
BROSKA, P	MERC	0	0	0	1423#	EFRON, D	ROCKW	2	1	0	1562
BROTSOS, J	ALUMN	1	1	1	1586D	ELEK, G	NORTH	0	1	0	0000?
BROZOVICH, J	TYROS	0	0	0	1781C	ELLERY, G	RADIO	1	1	0	1464#
BUCHNER, R	INDNS	0	0	0	1991	EUSTACE, D	INDNS	0	0	0	1296*
BUERGER, E	EXCAL	1	2	0	2048D	FABIJONAS, R	EXCAL	1	1	0	1777D
BURBA, K	ROOKS	0	0	0	1414C	FAHRENHOLTZ, S	MTRLA	0	0	0	1739#
BURIAN, D	NORTH	1	1	0	1660	FELDMAN, A	FLPRO	1	2	0	1414
CAGNEY, D	KEMPR	0	0	0	0000?	FELICIANO, H	PSTOF	0	0	0	0000?
CAMPBELL, C	AMCRP	0	1	0	1192	FIPPINGER, P	WHEAT	0	0	0	0000?
CAMPBELL, D	AMOCO	0	1	0	0000?	FISCHLER, M	FERMI	0	0	0	1337
CARTER, D	JCASE	0	0	1	1084*	FRAATS, D	CONBK	0	2	1	1874
CARTER, L	PSTOF	2	1	0	1512*	FRANEK, M	SECST	0	1	3	1824
CHACHERE, L	INDNS	0	0	0	2362	FRANK, M	MERC	0	1	2	0000?
CHAN, H	SEARS	0	1	1	1613	FRANTZIS, G	MERC	0	0	0	0000?
CHARKOVSKY, R	SECST	4	0	0	1758#	FREY, M	FERMI	0	0	0	0000?
CHEBROUGH, C	CRT	0	0	0	0000?	FRIDRICH, C	MTRLA	0	0	0	1427#
CHEVERESAN, S	UOP	0	1	0	1346	FRIESEMA, W	CRT	2	1	0	2010*
CHIU, H	KNIGHT	3	0	0	1612*	FRISKE, T	EXCAL	1	2	0	1888

? - UNRATED

- 5 TO 9 RATED GAMES

* - 10 TO 24 RATED GAMES

C - CENTURY CLUB MEMBER

D - DOUBLE CENTURION

NAME	TEAM	W	L	D	RATING	NAME	TEAM	W	L	D	RATING
GAINES, I	FERMI	1	0	0	1726C	KNUTSON, G	KEMPR	0	0	0	0000?
GAMEZ, M	JCASE	1	2	0	0000?	KOEPELE, J	TYROS	0	0	0	0000?
GARLAND, G	KEMPR	0	0	0	1694	KOZLOVSKY, M	FERMI	1	1	0	2290*
GAVIN, L	MERC	0	4	0	1238*	KRAKAU, H	EXMPL	2	0	0	1972
GILES, M	SEARS	1	0	1	2473	KRAS, T	ALUMN	0	0	0	2262
GLICENSTEIN, J	FERMI	0	1	1	1948	KRULL, E	AMCRP	1	2	0	1334*
GOLUMBOVSKI, P	NORTH	1	1	0	2045#	KUEHLHORN, B	MTRLA	0	0	0	0000?
GONCHAROFF, N	MTRLA	1	1	0	1768D	KUKES, S	AMOCO	1	0	0	0000?
GREEN, D	KNIGHT	0	1	0	1811C	KUMRO, D	CHRGR	0	3	1	1717D
GREGORY, J	PSTOF	2	1	0	2215	LANNOYE, D	WALGR	0	0	0	1698*
GROTANS, G	MERC	0	3	0	0000?	LASKY, J	RADIO	2	0	0	1447
GRYPARIS, J	MTRLA	0	2	0	1359	LASKY, JIM	RADIO	1	0	0	1712#
GUILLEN, B	KEMPR	0	1	0	0000?	LASKY, N	RADIO	1	2	0	1464
GUID, J	ROYLS	0	1	1	2175	LATIMER, E	SEARS	1	2	0	2022D
HAHNE, D	ROYLS	0	1	1	1578	LEE, A	CRT	0	0	0	0000?
HAMILTON, L	AMCRP	1	2	0	0000?	LEE, R	TYROS	0	0	0	0000?
HAMMOND, M	CONBK	2	2	0	1316*	LEMPA, K	SECST	1	0	0	1524*
HARRINGER, R	TYROS	0	0	0	1619C	LEONG, D	SECST	0	0	0	1945*
HARRIS, F	SEARS	0	1	0	0000?	LEONG, G	EXCAL	0	0	0	2072C
HERNANDEZ, D	MTRLA	0	1	0	1493	LESTER, MM	MTRLA	1	0	0	0000?
HERSHEY, S	MTRLA	0	0	0	0000?	LEVINE, D	KNIGHT	3	0	1	2371
HERZOG, W	NORTH	0	0	0	0000?	LITVINAS, A	ALUMN	3	1	0	1820C
HESS, B	FLPRO	1	1	0	1526	LLOYD, K	PSTOF	0	0	0	0000?
HICKS, C	ROYLS	2	0	0	1410	LOSOFF, A	CRT	2	0	1	2003
HILL, R	KNIGHT	4	1	0	1625	LUDWIG, T	INDNS	0	0	0	2167
HILTON, J	MERC	0	2	0	0000?	MARCOVKA, R	PSTOF	3	1	0	2016C
HODINA, J	AMCRP	1	2	0	2000	MATHEWS, B	CRT	0	0	0	0000?
HOLM, B	AMOCO	0	0	0	1740	MATHUR, P	ROYLS	0	0	0	1316#
HORNER, L	CRT	0	0	0	0000?	MCGRIFF, M	RADIO	0	2	0	1422*
HOWARD, W	PSTOF	1	0	0	1101#	MCINTOSH, S	CONBK	1	1	0	1065#
HUGHES, N	KEMPR	0	0	0	1833C	MCQUINN, J	ROCKW	2	2	1	1562
HUMPF, R	RADIO	0	0	0	1297*	MERTENS, P	NORTH	0	0	0	0000?
HUTTAR, C	SECST	0	0	1	2016	MICKLICH, F	UOP	2	0	0	1823C
ILANGA, R	FLPRO	0	0	0	2023*	MIKULECKY, B	RADIO	1	3	0	1347
INUMERABLE, F	PSTOF	1	0	1	2192	MILLER, J	NORTH	0	0	0	0000?
ISAAC, G	CRT	0	0	0	0000?	MILLER, TT	SEARS	1	2	0	0000?
ISAAC, T	PSTOF	0	0	0	1667	MITCHAM, L	ROCKW	0	1	2	0000?
JACOBS, N	DRGNS	2	0	0	1954C	MOLES, J	MTRLA	0	1	0	1209
JAKSTAS, K	NORTH	1	1	0	2189	MOODY, L	CONBK	0	2	0	0000?
JASAITIS, A	CRT	1	1	2	2136	MORGAN, T	MTRLA	0	1	0	0000?
JONES, B	ROCKW	1	0	2	2139	MORTON, B	SEARS	2	0	0	1605*
KALE, S	JCASE	0	2	1	1419#	MOTYCKA, R	JCASE	0	1	0	1246
KALIHHER, C	FERMI	2	0	0	1930	MUNOZ, A	INDNS	0	0	0	1247
KANAS, W	JCASE	0	2	1	1272	NELSON, H	CONBK	2	0	0	1947
KARGE, W	KEMPR	0	0	0	1269	NWABUDE, D	ROYLS	0	0	0	0000?
KARLOVICS, S	EXCAL	0	0	0	1820C	O'DELL, DW	RADIO	0	2	2	1634
KELLOGG, K	KNIGHT	3	1	0	1681C	DELHAFEN, A	EXMPL	1	1	0	1323*
KELLY, S	ROYLS	0	0	0	1339*	OGASAWARA, L	MTRLA	2	0	0	1870
KLEIN, P	NORTH	0	0	0	0000?	OGASAWARA, R	MTRLA	0	0	0	1604D
KLINEFELTER, H	JCASE	2	2	0	1438	OLUND, P	MTRLA	1	0	0	1346#

? - UNRATED
 # - 5 TO 9 RATED GAMES
 * - 10 TO 24 RATED GAMES

C - CENTURY CLUB MEMBER
 D - DOUBLE CENTURION

NAME	TEAM	W	L	D	RATING	NAME	TEAM	W	L	D	RATING
ORCUT, J	CRT	0	0	0	0000?	SCHUTE, E	MERC	0	0	0	0000?
OSTERLUND, R	EXCAL	2	1	0	1872	SCHWARTZ, M	TYROS	1	0	0	0000?
OTAKAN, V	FLPRO	0	1	0	0000?	SCHWARTZ, S	SEARS	1	1	1	1722C
PAKASKI, A	KEMPR	0	0	0	0000?	SECHLER, M	WHEAT	0	0	0	0000?
PARA, A	FERMI	2	0	0	0000?	SHACHTER, J	INDNS	0	0	0	1569
PARAOAN, E	CONBK	2	2	0	1826	SHAFF, R	TYROS	0	0	1	1539C
PATEL, R	CONBK	0	1	0	1490#	SHEU, G	INDNS	0	0	0	1272*
PAWLUS, D	MTRLA	0	0	0	0000?	SIEGEL, R	CONBK	2	1	1	1524
PEEL, M	WALGR	0	0	0	1902	SIMS, B	CRT	0	1	0	0000?
PEIJFFERS, S	INDNS	0	0	0	1990	SIWEK, M	KEMPR	2	1	0	2107
PETERS, P	FLPRO	0	1	0	1117*	SKULSKI, I	EXMPL	2	0	0	1841
PETWAY, L	PSTOF	2	1	0	1537*	SLUSSER, C	CRT	0	0	0	0000?
POLIZZANO, S	WHEAT	0	1	0	0000?	SMILEY, R	AMCRP	1	0	1	1931
POTTS, S	WHEAT	0	1	0	0000?	SMITH, JM	SECST	1	1	1	1217*
POYNOR, D	WHEAT	1	0	0	0000?	SNELLING, C	PSTOF	0	0	0	0000?
PUECHNER, R	KEMPR	0	1	0	0000?	SOMASUNDARAM, S	TYROS	0	0	0	0000?
PULTS, J	AMOCO	0	1	0	1808#	SOMBONG, M	CONBK	3	2	0	1804
PYLES, C	WHEAT	1	1	0	1308#	SOPRYCH, T	AMCRP	1	1	0	1630
RADAVICIUS, E	CHRGR	2	2	0	1704C	SPIEGEL, L	FERMI	1	1	0	2084
RADEMACHER, H	MTRLA	0	0	0	0000?	SPLIT, B	MERC	0	0	0	0000?
RAFACZ, T	ROCKW	1	2	0	1633	STAMM, V	CHRGR	1	1	0	1702D
RAFACZ, W	ROCKW	1	4	0	1643*	STEMPINSKI, P	NORTH	0	2	0	1502
RAVANAM, S	JCASE	0	0	0	1219*	STEVANOVIC, M	UOP	1	0	1	2254C
REDEY, E	KNIGHT	0	0	0	1025*	STINSON, M	INDNS	0	0	0	1998
REED, L	PSTOF	0	0	0	1735#	STUHLBARG, D	UOP	0	1	0	1529C
REHORST, R	FLPRO	0	0	0	0000?	SUERTH, F	EXMPL	2	1	0	1647
REID, C	JCASE	0	0	1	1255*	SULLIVAN, C	MERC	2	2	0	0000?
REID, D	MERC	0	1	0	0000?	SULLIVAN, J	EXCAL	2	1	0	1978C
RENNER, T	AMOCO	0	0	0	1631	SVOBODA, D	MTRLA	0	0	0	0000?
REVULURI, K	MTRLA	0	1	0	0000?	SWIDERSKI, M	CHRGR	2	1	0	1362C
REYES, R	SEARS	2	0	1	2293C	TASKER, I	ROOKS	0	0	0	1453*
RIEDERER, D	CRT	0	3	0	0000?	TATARSKY, J	KEMPR	0	3	0	1386#
RINGENBERG, T	AMOCO	0	1	0	1364*	TAYLOR, F	WHEAT	0	1	1	1224*
RIPPE, D	TYROS	0	1	0	0000?	TEGEL, F	DRGNS	2	1	0	2185D
RO, D	CRT	1	3	0	1518*	THOMAS, G	TYROS	0	0	1	1394
ROGERS, N	PSTOF	1	0	1	1998*	THOMAS, J	CHRGR	2	2	0	1566C
ROSE, J	FERMI	0	0	0	1972	THOMPSON, M	AMOCO	0	0	0	1390*
ROSE, K	AMOCO	1	0	0	1961	THOMPSON, R	FLPRO	0	2	0	1047
ROSEN, JJ	FERMI	1	0	0	0000?	TOGAMI, P	JCASE	0	0	0	1173*
ROSING, G	EXCAL	1	0	0	1505*	TOMCHEK, W	MTRLA	0	0	0	0000?
ROSLEY, D	ROYLS	2	0	0	1862	TRAN, D	MTRLA	0	0	0	0000?
RUDY, J	MERC	0	0	0	1246*	TRIPURANENI, D	ROCKW	0	0	0	0000?
RZESZUTKO, R	SECST	1	1	2	1932	TRISCHUK, J	FERMI	0	0	0	0000?
SAGALOVSKY, L	ROOKS	0	0	0	1911	TUSSING, D	KNIGHT	0	0	0	0000?
SAJBEL, P	UOP	1	1	0	1630	UNDERWOOD, W	WHEAT	1	0	0	1990C
SAJKOWSKI, D	AMOCO	0	0	1	1923	VAN MEER, J	KEMPR	0	0	0	1867
SAMELSON, C	MTRLA	0	2	0	2051C	VAN ZILE, C	UOP	0	0	0	0000?
SATCHELL, E	WHEAT	0	0	0	1491#	VELAYUTHAM, S	TYROS	0	1	0	1305#
SATTERLEE, D	JCASE	1	1	1	1587	VIGANTS, A	NORTH	1	1	0	1617
SCHULMAN, R	EXMPL	2	0	0	1950C	VOLOSHIN, G	WALGR	0	0	0	1636#

? - UNRATED

- 5 TO 9 RATED GAMES

* - 10 TO 24 RATED GAMES

C - CENTURY CLUB MEMBER

D - DOUBLE CENTURION

NAME	TEAM	W	L	D	RATING	NAME	TEAM	W	L	D	RATING
WALHOUT, P	WHEAT	1	1	0	2164	WIENS, F	WHEAT	0	1	1	1381
WALKER, R	FERMI	0	0	0	1376C	WILLIAMS, B	WALGR	0	0	0	0000?
WALSH, W	ROOKS	0	0	0	1503C	WINSTON, H	SECST	2	0	0	2024
WARD, C	DRGNS	1	2	1	1594D	WIRTSCHAFTER, D	ALUMN	1	1	0	2072
WEARY, M	MTRLA	0	0	0	0000?	WONG, P	EXMPL	2	0	0	2253C
WEILAND, S	WALGR	0	0	0	1112#	WYNARD, D	WHEAT	0	0	0	0000?
WEISNER, T	RADIO	0	2	0	1146	WYNN, R	FLPRO	0	0	0	0000?
WEITZ, R	FLPRO	0	3	0	1818C	YOUNG, C	KNIGHT	0	0	0	1952C
WENTLING, C	AMCRP	0	1	0	1491	ZAROMB, S	KNIGHT	0	1	0	1454
WEST, R	MTRLA	2	0	0	0000?	ZEIDEL, J	MERC	0	1	2	1985
WHITE, H	JCASE	1	2	0	1747	ZHANG, L	AMOCO	0	0	0	0000?
WHITSITT, S	DRGNS	1	1	1	1571*	ZOELLNER, J	CONBK	2	3	0	1167
WIENCEK, T	KNIGHT	0	0	0	1239*						

? - UNRATED

- 5 TO 9 RATED GAMES

* - 10 TO 24 RATED GAMES

C - CENTURY CLUB MEMBER

D - DOUBLE CENTURION