

Chicago Industrial Chess League

Bulletin 9 Volume 34
June, 1991

Congratulations to the following teams:

ARGONNE KNIGHTS - LEAGUE CHAMPIONS

ALUMNI CENTRAL - ALUMNI CHAMPIONS

FERMILAB - LEAGUE 2nd PLACE
(Far West Division Champions)

MOTOROLA - LEAGUE 3rd PLACE
(North Division Co-Champions)

Honorable mention also to the following teams:

CHICAGO POST OFFICE - East Division Champions

NORTHROP - North Division Champions

AMOCO - East Division 2nd Place

BELL LABS DRAGONS - Near West 2nd Place

BELL LABS INDIANS - Far West 2nd Place

There also also several games published in this issue, as well as the Ratings Chairman's Annual Report and an informative account by league secretary Tony Jasaitis of a dispute at the league championship. See you next autumn.

--Bulletin Editor - Marty Franek

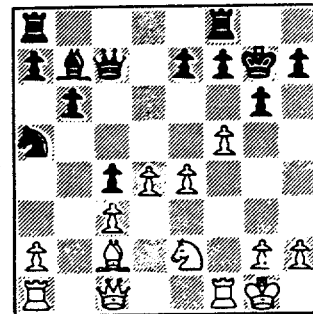
Home: 708/636-3714

Work: 312/353-1123

Alumni Central (Visitors) vs. Alumni Second Stringers (Home)
Board 4
May 2, 1991

White: Marty Franek
Black: Asher Bronfeld
Gruenfeld Indian Defense
(Notes by winner)

- | | | |
|-----|--------|------|
| 1. | d4 | Nf6 |
| 2. | c4 | g6 |
| 3. | Nc3 | d5 |
| 4. | cd | N:d5 |
| 5. | e4 | N:c3 |
| 6. | b:c3 | Bg7 |
| 7. | Bc4 | c5 |
| 8. | Be3 | O-O |
| 9. | Ne2 | Nc6 |
| 10. | O-O ? | Qc7 |
| 11. | Qc1 ?! | |



To meet the threat of 11.
... cd 12. cd N:d4 winning a
pawn. 11. d5 is met by ...
Rd8. d5 should have been
played a move earlier by White
while the black Queen was
still on d8. Now White must
give up space on the queenside
and play this awkward looking
move.

- | | | |
|-----|------|------|
| 11. | ... | Na5 |
| 12. | Bd3 | c4 |
| 13. | Bc2 | b6 |
| 14. | Bh6 | Re8 |
| 15. | B:g7 | K:g7 |
| 16. | f4 | |

White's piece placement
is passive at best, but the
Black kingside looked so
vulnerable that after much
thought, I decided to try to
open the f file. Black owns
the queenside, but White is in
no immediate danger of an
invasion. White also has the
central pawn duo, with the
queen pawn supported by the
pawn on c3. This pawn looks
weak, but it cannot
immediately be attacked.

- | | | |
|-----|-----|-----|
| 16. | ... | Bb7 |
| 17. | f5 | Rf8 |

18. Rf3 ?!

18. Qg5 is probably a
better move, (18. ... f6 or h6
just weakens the Black king
position more), since it
avoids pinning the pawn at e5.
However, I was preoccupied
with the idea of piling up
heavy pieces on the f file.

18. ... f6

Exactly why I should not
have played Rf3. However, I
do have access to the hole
this move creates at e6.

19. Nf4 Bc8

20. Rg3 g4

21. Nd5 ?

(What about 21. e5!)

21. ... Qd6

Now Black threatens 22.

- ... B:f5.

22. Ne3 Nc6

23. Qd1

Just can't get that queen
off the back rank and connect
my rooks! I overlooked, also,
that White can play N:c4. If
23. ... N:d4 24. c:d4 (Not 24.
N:d6 Ne2 ch!) Q:d4 ch, simply
25. Ne3.

23. ... e5 ?

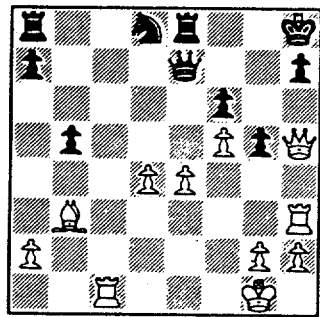
This is probably the

losing move, (I guess neither of us really understood the position). Black's best practical chance is to keep the material balance with 23. ... b5. If his knight can get back to the kingside fast enough, he may be able to hold the position. Now there is no reason that the pawn on c4 can't be taken.

- 24. N:c4 Qe7
- 25. Rh3 b5
- 26. Qa5 Kh8
- 27. Nd6 ed
- 28. Bb3

This key move is possible because Black allowed his c pawn to fall uncontested back on move 24.

- 28. ... Nd8
- 29. cd Bd7
- 30. Rc1 Be8
- 31. N:e8 Re8



- 32. Rc7
- I don't think Black has a satisfactory reply.
- 32. ... Q:c7
- 33. Q:e8 ch Kg7
- 34. Qg8 mate

AT&T CHARGERS vs. A&B RADIO

April 24, 1991

White: Dan Kumro

Black: Joe Lasky

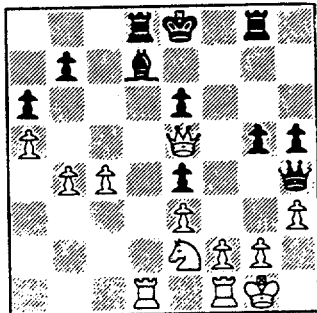
Candidate for Best Sacrifice

1.	d4	d5
2.	Nc3	Nf6
3.	Bg5	Ne4
4.	N:e4	d:e4
5.	e3	c6
6.	c3	h6
7.	Bf4	Nd7
8.	Bc4	Nf6
9.	Ne2	Bg4
10.	h3	Bd7
11.	Qb3	Nd5 ?
12.	B:d5	c:d5
13.	Q:d5	Bc6
14.	Qb3	e6
15.	0-0	Qh4
16.	Bg3	Qg5
17.	a4	h5
18.	Be5	Rd8
19.	Rad1	Bd6
20.	B:d6	R:d6
21.	Qb4	Rd2
22.	a5	a6
23.	c4	Qh5
24.	Qc5	Rd8
25.	b4	g5
26.	Qe5	Rg8
27.	d5	Bd7
28.	de	fe

back the rook and remains a piece to the good. However, black lets himself open for a fierce attack by White. - DK

30.	Rd1 ch	Ke7
31.	Qc7 ch	Kf6
32.	R:d8	Rg7
33.	Rf8 ch	Kg6
34.	Qd8	Kh7
35.	Rh8 ch	Kg6
36.	Qe8 ch	Rf7
37.	Q:e6	Kg7

and Black resigned before White could play 38. Qh6 mate.



29. R:d7 ! K:d7
 Not 29. ... R:d7 ??
 because then White wins

4
CHICAGO INDUSTRIAL CHESS LEAGUE

EVENT Alumni Central vs 3rd Stringers*
 DATE 5/2/91 ROUND 10 BOARD 5
 WHITE Porter RATING _____
 BLACK Bob Charkosky RATING _____
 TIME ADJOURNED _____ WHITE _____ BLACK _____

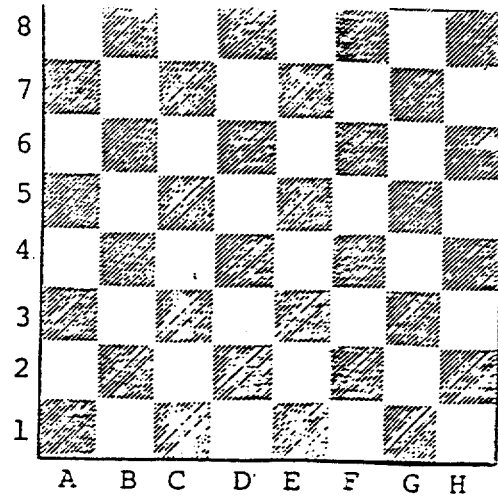


Excalibur



* Play-off - round 1

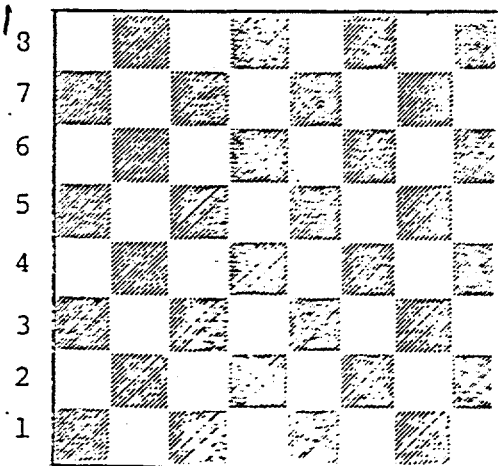
OPENING Quef Lopez 50/2



POSITION AFTER MOVE

	WHITE	BLACK		WHITE	BLACK		WHITE	BLACK
1	P-K4	P-K4	31	B-Q3	P-N5	60		
2	N-KB3	N-QB3	32	PxP	PxP	61		
3	B-N5	P-QR3	33	N-R4	B-R3	62		
4	B-R4	N-B3	34	BxB+	QxB	63		
5	O-O	B-B4	35	N-B5	Q-Q3	64		
6	P-B3	P-Q3	36	K-N2	N-B3	65		
7	P-Q4	PxP	37	R-QR1	K-B1	66		
8	PxP	B-QN5	38	Q-K2	N-N1	67		
9	P-QR3	P-QN4	39	R-R8	Q-QB3	68		
10	B-B2	B-R4	40	R-R4	K-Q1	69		
11	P-R3	B-N2	41	RxNP	N-Q2	70		
12	B-K3	N-K2	42	NxN	KxN	71		
13	QN-Q2	BxN	43	Q-N5	R-K1	72		
14	NxB	Q-Q2	44	K-B3	R-B+	73		
15	R-K	P-R3	45	K-K2	R-K1	74		
16	P-B3	Q-O-O	46	K-Q3	QxQ+	75		
17	N-B1	P-N3	47	RxQ	P-B3			
18	QR-B1	N-R4	48	R-N7+	K-Q3			
19	R-K2	P-KB4	49	P-QN4	R-KB1			
20	Q-Q2	PxP	50	K-K2	R-K1			
21	PxP	P-N4						
22	R-B2	QR-B1	51	R-KB7	R-K3			
23	P-KN4	N-KB3	52	K-B3	K-N3			
24	N-N3	P-Q4	53	B-B2	K-K3			
25	R(N)-KB	NxKP	54	R-QB7	R-B3+			
26	NxN	RxR	55	K-N2	K-Q3			
27	NxR	Q-Q3	56	B-N3+	K-K3			
28	N-Q1	N-B3	57	RxP+	<i>Prosigna</i>			
29	Q-B2	P-QR4	58					
30	N-B3	N-R2	59					

SECOND TIME CONTROL



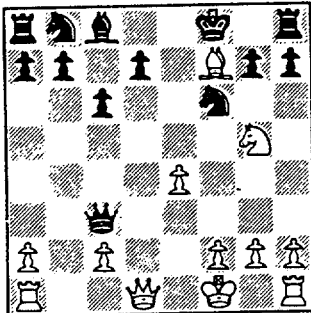
POSITION AFTER MOVE

Chicago Mercantile Exchange (Home) vs. Chicago Post Office (Vis)
Board 2 May 7, 1991

White: Carl V. Sullivan Black: Bob Marcowka
Candidate for Best Upset Victory

Here is an amusing miniature submitted for best upset victory. However, since Black had a completely won position one move before he was checkmated, it probably belongs in the 'best salvage' category. In either case, it is very difficult for me to award White for his incredible luck in receiving a gift from a strong expert in the form of a timely, (or untimely, depending on your viewpoint), oversight.

- | | | |
|-----|---------|---------|
| 1. | e4 | e5 |
| 2. | Nc3 | Nf6 |
| 3. | Bc4 | c6 |
| 4. | d4 | Qa5 |
| 5. | Bd2 | Bb4 |
| 6. | Nh3 | e:d4 |
| 7. | Ng5 ? | d:c3 |
| 8. | B:f7 ch | Kf8 |
| 9. | b:c3 | B:c3 |
| 10. | B:c3 | Q:c3 ch |
| 11. | Kf1 | |



- | | | |
|-----|----------|--------|
| 11. | | h6 ??? |
| 12. | Qd6 mate | |

PLAYOFF RULES SCRAMBLE
by Tony Jasaitis

As the second round of the playoffs drew toward the close, we had some unusual excitement: we had a time control forfeit situation with an illegal move being made, and nobody could find a USCF rule that was directly applicable to the situation! I thought the situation was interesting enough to report to you, as well as the proper procedure for future reference. ALL team captains should take note of the warning in the last paragraph.

Here's the "play-by-play" of the dispute, as best as I can reconstruct it: Motorola is leading Post Office 3-2, with P.O.'s F. Inumerable (White) beating C. Wallach, but White has only seconds on his clock. It's Black's 45th move. A crowd has gathered, as this is one of the few remaining games. Black makes an illegal move, putting his King in check. White grabs the King with his Queen (blitz style). White's flag falls somewhere in the process. The Motorola team captain claims time forfeit, while an uproar ensues over the situation!

We rummage through the rule book. It's easy enough to find the rule that says that if less than 10 moves have occurred since the illegal position, the game must be restored to the last legal position and replayed from there. The big stumbling block is how much time should be restored on White's clock? The general consensus is that White only had seconds left. Experienced players say that a penalty should be incurred for the illegal move, in the form of time added to the opponent's clock. Some say two minutes, some say five. The rule book's inadequate index doesn't help us locate a rule that directly addresses the problem.

After much hullabaloo with different suggestions, and the deadline of the next round approaching, we form a committee to make a decision, comprised of myself, Dan Kumro, and F. Tegel. We decide to give White a half-minute as the best compromise under the circumstances.

Since Black had touched his King in making the illegal move, he is forced to move it. White checkmates his opponent within the remaining time.

So now that the smoke has cleared, what was the proper procedure? Greg Berry located it in the rules after the game was over. A copy of the rules is enclosed for your reference. The rule in essence gives players whose time used cannot be determined a time allotment in proportion to the amount already used on the clock and the number of moves made at the time the irregularity occurred. In this case, White's clock was showing exactly 2 hours, he had made 45 legal moves, and the problem was discovered on the 46th move. White's clock is to be set at $45/46$ ths (the proportion of legal moves to total moves) of 2 hours (total time used), computing to 117.4 minutes used, which means that White should get 2.6 minutes remaining.

PLAYOFF RULES SCRAMBLE (p. 2)

In effect, this means that Black should have been penalized 2.6 minutes for making an illegal move during his opponent's time pressure, in the form of time credit given to his opponent. I discussed the situation with USCF Tournament Director Al Losoff, who said the rule is not meant specifically to be a penalty, but that it is the only workable solution when a number of moves have been made after the illegal move. If in addition it has the effect of a penalty, so much the better, as there have been cases of people making illegal moves deliberately during their opponents' time pressure. So the lesson is: if your opponent is in time pressure, make sure you make legal moves!

I asked Al Losoff about another subtlety of this game: the rules state that a claim of touch-move should be made prior to one's own touching of a piece. Since White touched his Queen to "capture" the opponent's King, should Black have been forced to move his King after the position had been reinstated? Al said that the requirement to reinstate a legal position supercedes the claiming-of-touch-move rule (ie., the last legal thing that happened is that Black touched his King preparing to move). Aside from that, Al felt that capture of the opponent's King is a commonly enough accepted way of indicating that an opponent has moved illegally, being that it is totally valid in blitz chess rules.

I would like to raise a third point regarding the circumstances of this game: The time forfeit claim was apparently raised by the team captain, not the player. The rules (a copy is enclosed) state that the ONLY person allowed to make a time forfeit claim is the player himself. Not even a tournament director may make a time forfeit claim; he just handles the claim afterward. ALL team captains and players should consider themselves warned on this matter.

- M. In the case of I.10.A and I.10.C, when it is not possible to determine the time used by each player up to the moment when the irregularity occurred, each player shall be allotted a time proportional to that indicated by the clock when the irregularity was discovered. For example, after black's 30th move it is found that an illegal move was made at the 20th move. For the 30 moves made up to that time, the clock shows 90 minutes elapsed for white and 60 minutes elapsed for black. The tournament director assumes that the times used for each side at the 20th move were proportional to the times used at the 30th move and calculates as follows:
- white: 90 minutes x (20 moves/30 moves) = 60 minutes;
 black: 60 minutes x (20 moves/30 moves) = 40 minutes.
 He would then reset the clocks at 60 minutes for white and 40 minutes for black.
- N. A resignation or an agreement to draw remains valid even when it is found later that the flag of one side had fallen.
- O. If both flags have fallen virtually at the same time and the tournament director is unable to establish which flag fell first, the game shall continue.
- P. The tournament director shall refrain from calling a player's attention to the fact that his opponent has made a move or that he has forgotten to stop his clock after he has made a move.
- Q. If a player stops both clocks to summon the director, he should make clear to his opponent that he is not resigning the game.
- L. The game is lost by the player who has not completed the prescribed number of moves in the allotted time.
1. Only the tournament director and the players in the game involved may concern themselves with the fall of the flag. Spectators, including players of other games, who point out the fall of a flag in any manner may be disciplined by the tournament director to the point of expulsion from the playing hall, loss of their own game, or expulsion from the tournament.
2. Whenever possible, a director should be present at any game in which a player is in time trouble, in order that he may observe the players and take immediate action if a claim of a win on time is made by one of the players. Under this standard USCF procedure, a director must never initiate a time-forfeit win without a player's first having made a claim.
3. If the player whose flag has fallen accepts the claim, the game is over.
4. When the player does not accept the claim—
- a. If a director is present, he stops both clocks and rules on whether or not the player has lost the game according to the procedures in this rule.
 - b. If the tournament director is not present when the claim is made, the claimant should stop both clocks and summon a director to the board for the necessary ruling. Play in the game ceases and neither player is permitted to fill in any previous moves missing from his score sheet.

Ratings Chairman's Report

The CICL Championship ended with the Argonne Knights as CICL champions for the 1990-91 season. Fermilab took second place and Motorola third. The playoff standings given elsewhere in the bulletin give the results of the eight teams, but they do not reflect the tie-break procedures in use for the playoffs.

The Alumni Central team won the alumni championship over the Exemplars by a score of 4-1, when only one member of the Exemplars showed up at the playoff playing site.

The Most Improved Player award is made to the player who gains the most rating points in the regular season. This year's winner is Don Bernard of CRT, from the East Division.

Also, this year seven players earned Century Club awards. Two of these are Double Centurion awards, for completing 200 games in CICL competition:

Roy Benedek, Argonne Knights -- 208 games
 Jim Sullivan, Excaliburs -- 203 games

Five players earned Centurion Awards, for completing 100 games in the CICL:

S. Cheveresan, UOP -- 103 games
 Greg Dewitt, Rockwell Int'l -- 100 games
 Kaz Jakstas, Northrop -- 100 games
 Thad Soprych, Amoco Corp. -- 103 games
 Len Spiegel, Fermilab -- 106 games

Congratulations to all of the award winners!!

10
FINAL

NORTH DIVISION 05-19-1991

TEAM NAME	W	L	D	GAME	MATCH	PCT
				POINTS	POINTS	
NORTHROP CORP.	6	1	2	35.5	7.0	0.778
MOTOROLA	7	2	0	35.0	7.0	0.778
EXCALIBURS	4	3	2	29.0	5.0	0.556
UOP PROCESS DIV.	4	4	1	32.5	4.5	0.500
KEMPER INSURANCE	2	4	2	16.5	3.0	0.375
EXEMPLARS	2	4	1	18.5	2.5	0.357
FEL-PRO	0	7	0	6.0	0.0	0.000

EAST DIVISION 05-19-1991

TEAM NAME	W	L	D	GAME	MATCH	PCT
				POINTS	POINTS	
CHICAGO POST OFFICE	7	3	0	40.0	7.0	0.700
ALUMNI CENTRAL	6	3	1	36.5	6.5	0.650
AMOCO CORP.	6	3	1	31.0	6.5	0.650
ALUMNI 2ND STRINGERS	5	4	1	32.0	5.5	0.550
CONTINENTAL BANK	4	4	2	30.5	5.0	0.500
CHICAGO RES. & TRDG.	3	4	3	29.0	4.5	0.450
SEARS	3	5	2	29.0	4.0	0.400
CHICAGO MERC. EXCH.	1	9	0	10.0	1.0	0.100

NEAR WEST DIVISION 05-19-1991

TEAM NAME	W	L	D	GAME	MATCH	PCT
				POINTS	POINTS	
ARGONNE KNIGHTS	9	0	0	41.0	9.0	1.000
BELL LABS DRAGONS	6	2	1	31.0	6.5	0.722
BELL LABS ROYALS	5	4	0	34.5	5.0	0.556
AT&T CHARGERS	5	4	0	30.0	5.0	0.556
ROCKWELL INT'L	3	4	1	22.0	3.5	0.438
A & B RADIO	1	7	0	9.5	1.0	0.125
J. I. CASE	0	8	0	12.0	0.0	0.000

FAR WEST DIVISION 05-19-1991

TEAM NAME	W	L	D	GAME	MATCH	PCT
				POINTS	POINTS	
FERMILAB	7	0	1	31.0	7.5	0.938
BELL LABS INDIANS	5	1	2	33.0	6.0	0.750
AT&T TYROS	3	5	0	20.0	3.0	0.375
WHEATON COLLEGE	2	5	1	18.5	2.5	0.313
AMOCO RESEARCH LABS	1	7	0	16.5	1.0	0.125

08-APR-91 FEL-PRO
ROUND 9

1 NORTHROP CORP.

5

BD	RATINGS	SCORE		RATINGS	SCORE
1 WEITZ, R	1838 -4	0	JAKSTAS, K	2221 4	1
2 HESS, B	1519 -2	0	GOLUMBOVSKI, P	2065 2	1
3 MONZANI, A	1770-11	0	DIAZ, P	1957 11	1
4 FELDMAN, A	1398 14	.5	VIGANTS, A	1645-14	.5
5 BAKER, B	1009 -3	0	STEMPINSKI, P	1469 3	1
6 THOMPSON, R	1044 0	.5	ALMAZAN, S	0 0	.5
7 REHORST, R	0 0	0	BURIAN, D	1666 0	1

22-APR-91 EXCALIBURS
ROUND 10

4.5 UOP PROCESS DIV.

1.5

BD	RATINGS	SCORE		RATINGS	SCORE
1 BUERGER, E	2059 23	1	STEVANOVIC, M	2266-23	0
2 SULLIVAN, J	2029 7	1	MICKLICH, F	1816 -7	0
3 OSTERLUND, R	1885 17	1	WALLIN, R	1801-17	0
4 FRISKE, T	1878-35	0	SAJBEL, P	1671 35	1
5 FABIJONAS, R	1779 6	1	STUHLBARG, D	1525 -6	0
6 ROSING, G	1437 -4	.5	VAN ZILE, C	1375 4	.5

24-APR-91 MOTOROLA
ROUND 10

2.5 NORTHROP CORP.

3.5

BD	RATINGS	SCORE		RATINGS	SCORE
1 WALLACH, C	2047 11	.5	JAKSTAS, K	2225-11	.5
2 EASTER, R	2140-27	0	GOLUMBOVSKI, P	2067 27	1
3 BLOOM, B	2019-26	0	DIAZ, P	1968 26	1
4 SAMELSON, C	2073-12	.5	BURIAN, D	1666 19	.5
5 OGASAWARA, L	1872-14	.5	VIGANTS, A	1631 14	.5
6 AUGSBURGER, L	1770 0	1	ALMAZAN, S	0 0	0
7 GRYPARIS, J	1359 5	1	ELEK, G	1007 -5	0
8 SZAUKELLIS, W	0 0	0	OLUND, P	1391 0	1 (MTRLA)

18-APR-91 WHEATON COLLEGE
ROUND 8

3.5 AMOCO RESEARCH LABS

1.5

BD	RATINGS	SCORE		RATINGS	SCORE
1 WALHOUT, P	2121-13	.5	SAJKOWSKI, D	1907 13	.5
2 TAYLOR, F	1231 0	0	SUH, G	0 0	1
3 WIENS, P	1387 0	1	MANILLA, M	0 0	0
4 PYLES, C	1294 0	1	POMA, D	0 0	0
5 FIPPINGER, P	0 0	1	SCHATTKE, N	0 0	0
6	0 0	0F		0 0	0F

25-APR-91 BELL LABS INDIANS
ROUND 10

3 WHEATON COLLEGE

3

BD	RATINGS	SCORE		RATINGS	SCORE
1 LUDWIG, T	2148 20	1	WALHOUT, P	2108-20	0
2 BLACKMON, E	1699 -8	0	UNDERWOOD, W	1957 6	1
3 BHOJWANI, R	0 0	0	WIENS, P	1387 0	1
4 EUSTACE, D	1314 17	1	TAYLOR, F	1231-17	0
5 FLYNN, T	0 0	0	PYLES, C	1294 0	1
6 TURPIN, S	0 0	1	FIPPINGER, P	0 0	0

25-APR-91 ALUMNI 2ND STRINGERS 3.5 SEARS 2.5
ROUND 9

BD	RATINGS	SCORE	RATINGS	SCORE
1 RZESZUTKO,R	1942 43	1	GILES,M	2473-43 0
2 WINSTON,H	1995 16	.5	REYES,R	2299-11 .5
3 BEARD,G	1851 12	.5	GOLLA,R	2043 -8 .5
4 FRANEK,M	1843-13	0	LATIMER,E	2003 9 1
5 CHARKOVSKY,R	1726 -1	.5	SCHWARTZ,S	1719 0 .5
6 DAVIDSON,M	1619 22	1	MORTON,B	1612-22 0

25-APR-91 AMOCO CORP. 3 ALUMNI CENTRAL 3
ROUND 9

BD	RATINGS	SCORE	RATINGS	SCORE
1 SMILEY,R	1965 39	1	CZERNIECKI,A	2288-26 0
2 HODINA,J	2034 4	.5	WIRTSCHAFTER,D	2096 -4 .5
3 SOPRYCH,T	1644-11	0	BRONFELD,A	1849 11 1
4 KRULL,E	1394 -5	0	LITVINAS,A	1738 5 1
5 WENTLING,C	1502 5	.5	BROTSOS,J	1573 -3 .5
6 CAMPBELL,C	1186 0	1F		0 0 OF

01-MAY-91 CHICAGO RES. & TRDG. 2.5 AMOCO CORP. 3.5
ROUND 10

BD	RATINGS	SCORE	RATINGS	SCORE
1 JASAITIS,A	2160 15	1	HODINA,J	2038-15 0
2 FRIESEMA,W	2004-22	0	SMILEY,R	2004 23 1
3 LOSOFF,A	1981 15	1	ATKINSON,J	1861-15 0
4 DENG,J	1548 6	.5	SOPRYCH,T	1633 -6 .5
5 BERNARD,D	1247 -8	0	WENTLING,C	1507 8 1
6 RIEDERER,D	1093 -7	0	KRULL,E	1389 7 1

02-MAY-91 ALUMNI 2ND STRINGERS 1 ALUMNI CENTRAL 4
ROUND 10

BD	RATINGS	SCORE	RATINGS	SCORE
1 RZESZUTKO,R	1985 -8	0	CZERNIECKI,A	2262 5 1
2 WINSTON,H	2011-17	0	WIRTSCHAFTER,D	2092 17 1
3 BEARD,G	1863-30	0	LITVINAS,A	1743 30 1
4 FRANEK,M	1830 24	1	BRONFELD,A	1860-24 0
5 CHARKOVSKY,R	1725-32	0	BROTSOS,J	1570 21 1
6	0 0	OF		0 0 OF

07-MAY-91 CHICAGO MERC. EXCH. 1.5 CHICAGO POST OFFICE 4.5
ROUND 10

BD	RATINGS	SCORE	RATINGS	SCORE
1 FRANK,M	1734 -3	0	INUMERABLE,F	2222 3 1
2 SULLIVAN,C	1594 41	1	MARCOWKA,R	2008-27 0
3 COTE,J	1292 19	.5	COOPER,W	1704-19 .5
4 GAVIN,L	1233 -2	0	REED,L	1735 2 1
5 RUDY,J	1243 -7	0	CARTER,L	1530 7 1
6 GROTANS,G	1307-32	0	HOWARD,W	1145 32 1
7 BAKER,LR	0 0	0	HOWARD,W	1177 0 1
8 GROTANS,G	1275-17	0	HAMMOND,M	1359 17 1 (CONBK)
9 BAKER,LR	0 0	0	HAMMOND,M	1376 0 1 (CONBK)

08-MAY-91 SEARS
ROUND 10

1.5 CONTINENTAL BANK

4.5

BD	RATINGS	SCORE	RATINGS	SCORE
1 LATIMER, E	2012 15	1	LORING, S	2004-22 0
2 MORTON, B	1590 -5	0	NELSON, H	1962 5 1
3 CHAN, H	1571 -8	0	KOGAN, G	1836 8 1
4 ZEFF, T	0 0	0	PARAOAN, E	1765 0 1
5 MILLER, TT	0 0	.5	SOMBONG, M	1754 0 .5
6 ROSKO, D	0 0	0	DYCKOWSKI, R	1680 0 1
(CONBK) 7 ZOELLNER, J	1172 38	1	PATEL, R	1468-38 0
(CONBK) 8 MCINTOSH, S	1128 36	1	HAMMOND, M	1376-36 0
(CONBK) 9 HAMMOND, M	1340 14	1	ZOELLNER, J	1210-14 0

PLAYOFF DIVISION 05-19-1991

TEAM NAME	W	L	D	GAME POINTS	MATCH POINTS	PCT
ARGONNE KNIGHTS	2	0	1	13.5	2.5	0.833
MOTOROLA	1	0	2	12.0	2.0	0.667
CHICAGO POST OFFICE	1	0	2	11.0	2.0	0.667
FERMILAB	2	1	0	11.0	2.0	0.667
NORTHROP CORP.	1	2	0	6.0	1.0	0.333
AMOCO CORP.	1	2	0	5.0	1.0	0.333
BELL LABS INDIANS	0	1	2	5.0	1.0	0.333
BELL LABS DRAGONS	0	2	1	6.5	0.5	0.167

08-MAY-91 ARGONNE KNIGHTS

3

MOTOROLA

3

ROUND 1

BD		RATINGS	SCORE		RATINGS	SCORE
1	LEVINE, D	2371	8	1	EASTER, R	2113 -8 0
2	BENEDEK, R	2225	-9	.5	BLOOM, B	1993 14 .5
3	BERRY, G	2089	14	1	WALLACH, C	2058-20 0
4	DECMAN, S	1817	-6	0	SAMELSON, C	2061 6 1
5	BAURAC, D	1679	-3	0	CIESLEK, D	2047 5 1
6	HILL, R	1645	13	.5	OGASAWARA, L	1858-13 .5
7	KELLOGG, K	1686	-11	0	AUGSBURGER, L	1770 17 1
8	CHIU, H	1638	9	.5	GONCHAROFF, N	1772 -4 .5

09-MAY-91 NORTHROP CORP.

3.5

BELL LABS DRAGONS

2.5

ROUND 1

BD		RATINGS	SCORE		RATINGS	SCORE
1	JAKSTAS, K	2214	-4	.5	TEGEL, F	2156 2 .5
2	GOLUMBOVSKI, P	2094	15	1	JACOBS, N	1968-10 0
3	DIAZ, P	1994	15	1	CHRISTIAN, R	1867-10 0
4	BURIAN, D	1685	0	1F	DURKEE, D	1791 0 0F
5	VIGANTS, A	1645	-24	0	WARD, C	1621 16 1
6	STEMPINSKI, P	1472	-29	0	BECKLEY, S	1363 29 1

09-MAY-91 FERMILAB

5

AMOCO CORP.

1

ROUND 1

BD		RATINGS	SCORE		RATINGS	SCORE
1	KOZLOVSKY, M	2305	7	1	HODINA, J	2023 -7 0
2	SPIEGEL, L	2053	21	1	SMILEY, R	2027-21 0
3	GLICENSTEIN, J	1946	-7	.5	ATKINSON, J	1846 7 .5
4	GAINES, I	1739	10	1	SOPRYCH, T	1627-15 0
5	CISKO, G	0	0	.5	HAMILTON, L	0 0 .5
6	DOWAT, C	1471	18	1	KRULL, E	1396-18 0

16-MAY-91 CHICAGO POST OFFICE

3

BELL LABS INDIANS

3

ROUND 1

BD		RATINGS	SCORE		RATINGS	SCORE
1	INUMERABLE, F	2225	19	1	LUDWIG, T	2168-19 0
2	GREGORY, J	2170	-33	0	BUCHNER, R	1994 33 1
3	MARCOWKA, R	1981	5	1	BLACKMON, E	1691 -7 0
4	ROGERS, N	1983	0	0	BHOJWANI, R	0 0 1
5	COOPER, W	1685	5	1	EUSTACE, D	1331 -5 0
6	CARTER, L	1537	-37	0	SHEU, G	1269 37 1

18-MAY-91 AMOCO CORP.

4

BELL LABS DRAGONS

2

ROUND 2

BD		RATINGS	SCORE		RATINGS	SCORE
1	HODINA, J	2016	31	1	TEGEL, F	2158-21 0
2	SMILEY, R	2006	-4	.5	JACOBS, N	1958 2 .5
3	ATKINSON, J	1853	1	.5	CHRISTIAN, R	1857 0 .5
4	SOPRYCH, T	1612	11	.5	DURKEE, D	1791 -7 .5
5	KRULL, E	1378	15	.5	WARD, C	1637 -9 .5
6	HAMILTON, L	0	0	1F	0 0	0F

18-MAY-91 MOTOROLA
ROUND 2

3 CHICAGO POST OFFICE 3

BD	RATINGS	SCORE	RATINGS	SCORE
1 WALLACH, C	2038-11	0	INUMERABLE, F	2244 11 1
2 EASTER, R	2105-20	0	GREGORY, J	2137 20 1
3 SAMELSON, C	2067 11	1	ROGERS, N	1983-17 0
4 CIESLEK, D	2052-27	0	MARCOWKA, R	1986 18 1
5 OGASAWARA, L	1845 13	1	COOPER, W	1690-13 0
6 AUGSBURGER, L	1787 0	1F	CARTER, L	1500 0 0F
7 GONCHAROFF, N	1768 5	1	BROTSOS, J	1591 -8 0 (ALUMN)

18-MAY-91 NORTHROP CORP.
ROUND 2

1.5 FERMILAB 4.5

BD	RATINGS	SCORE	RATINGS	SCORE
1 GOLUMBOVSKI, P	2109 12	.5	KOZLOVSKY, M	2312-12 .5
2 DIAZ, P	2009-18	0	SPIEGEL, L	2074 18 1
3 BURIAN, D	1685 -8	0	GLICENSTEIN, J	1939 8 1
4 ALMAZAN, S	0 0	0	PARA, A	0 0 1
5 VIGANTS, A	1621 0	1	CISKO, G	0 0 0
6 STEMPINSKI, P	1443-20	0	DOWAT, C	1489 20 1

18-MAY-91 BELL LABS INDIANS
ROUND 2

0 ARGONNE KNIGHTS 6

BD	RATINGS	SCORE	RATINGS	SCORE
1 BLACKMON, E	1684 -1	0	LEVINE, D	2379 1 1
2 BHOJWANI, R	0 0	0	BENEDEK, R	2216 0 1
3 EUSTACE, D	1326 -1	0	BERRY, G	2103 0 1
4 FLYNN, T	0 0	0F	DECMAN, S	1811 0 1F
.5	0 0	0F	BAURAC, D	1676 0 1F
6	0 0	0F	HILL, R	1658 0 1F

18-MAY-91 ARGONNE KNIGHTS
ROUND 3

4.5 FERMILAB 1.5

BD	RATINGS	SCORE	RATINGS	SCORE
1 LEVINE, D	2380 17	1	KOZLOVSKY, M	2300-17 0
2 BENEDEK, R	2216 -5	.5	SPIEGEL, L	2092 8 .5
3 BERRY, G	2103 9	1	GLICENSTEIN, J	1947-13 0
4 DECMAN, S	1811 0	0	PARA, A	0 0 1
5 BAURAC, D	1676 0	1	CISKO, G	0 0 0
6 HILL, R	1658 13	1	DOWAT, C	1509-13 0

18-MAY-91 MOTOROLA
ROUND 3

6 AMOCO CORP. 0

BD	RATINGS	SCORE	RATINGS	SCORE
1 WALLACH, C	2027 24	1	HODINA, J	2047-24 0
2 EASTER, R	2085 9	1	ATKINSON, J	1854 -9 0
3 SAMELSON, C	2078 2	1	SOPRYCH, T	1623 -3 0
4 CIESLEK, D	2025 2	1	WENTLING, C	1515 -2 0
5 OGASAWARA, L	1858 0	1	HAMILTON, L	0 0 0
6 AUGSBURGER, L	1787 4	1	KRULL, E	1393 -4 0
7 GONCHAROFF, N	1773 3	1	KALE, S	1456 -6 0 (JCASE)

18-MAY-91 CHICAGO POST OFFICE

5

NORTHROP CORP.

1

ROUND 3

BD		RATINGS	SCORE		RATINGS	SCORE
1	INUMERABLE, F	2255-31	0	GOLUMBOVSKI, P	2121 31	1
2	GREGORY, J	2157 12	1	DIAZ, P	1991-12	0
3	ROGERS, N	1966 7	1	BURIAN, D	1677 -7	0
4	MARCOWKA, R	2004 3	1	VIGANTS, A	1621 -4	0
5	COOPER, W	1677 1	1	ELEK, G	1002 -1	0
6	CARTER, L	1500 0	1	ALMAZAN, S	0 0	0

18-MAY-91 BELL LABS DRAGONS

2

BELL LABS INDIANS

2

ROUND 3

BD		RATINGS	SCORE		RATINGS	SCORE
1	TEGEL, F	2137-13	.5	BLACKMON, E	1683 20	.5
2	JACOBS, N	1960 8	1	BHOJWANI, R	1779-12	0
3	CHRISTIAN, R	1857-14	.5	EUSTACE, D	1325 21	.5
4	WARD, C	1628-26	0	SHEU, G	1306 39	1
5		0 0	OF		0 0	OF
6		0 0	OF		0 0	OF

18-MAY-91 EXEMPLARS

1

ALUMNI CENTRAL

4

ROUND 1

BD		RATINGS	SCORE		RATINGS	SCORE
1	WONG, P	2204 3	1	BRONFELD, A	1836 -5	0
2		0 0	OF	CZERNIECKI, A	2267 0	1F
3		0 0	OF	WIRTSCHAFTER, D	2109 0	1F
4		0 0	OF	LITVINAS, A	1773 0	1F
5		0 0	OF	BROTSOS, J	1583 0	1F
6		0 0	OF		0 0	OF

FEL-PRO

NAME	RATING	SEASON			RATING CHANGE	TOTAL GAMES	RATED GAMES
		W	L	D			
WEITZ, R	1834C	1	5	0	-6	107	98
MONZANI, A	1759	0	1	0	-11	34	33
HESS, B	1517	1	3	0	-11	36	34
FELDMAN, A	1412	1	5	1	23	88	83
PETERS, P	1112*	0	3	0	-19	16	14
THOMPSON, R	1044	0	3	1	-4	50	36
BAKER, B	1006	0	5	0	-11	64	52
REHORST, R	0000?	0	4	0	0	4	3
OTAKAN, V	0000?	0	1	0	0	1	1

KEMPER INSURANCE

NAME	RATING	SEASON			RATING CHANGE	TOTAL GAMES	RATED GAMES
		W	L	D			
SIWEK, M	2120	4	3	1	7	92	85
VAN MEER, J	1901	1	0	0	34	4	4
HUGHES, N	1825C	0	2	1	-8	104	96
BLOEDOW, P	1472C	1	6	1	-13	115	105
TATARSKY, J	1435#	2	4	0	46	9	9
CUMMUTA, P	1377	4	2	2	104	86	58
OLSEN, A	0000?	0	4	0	0	4	4
CHOUdry, A	0000?	1	1	0	0	2	1
FILICHIA, T	0000?	1	2	0	0	3	1
GUILLEN, B	0000?	0	2	0	0	5	3
PUECHNER, R	0000?	0	2	0	0	2	1
MCFARLIN, B	0000?	0	2	0	0	2	1
LAMBIRIS, J	0000?	0	1	0	0	1	1

EXCALIBURS

NAME	RATING	SEASON			RATING CHANGE	TOTAL GAMES	RATED GAMES
		W	L	D			
BUERGER, E	2082D	4	5	0	19	221	191
SULLIVAN, J	2036C	7	2	0	42	203	195
OSTERLUND, R	1902	6	2	1	5	39	35
FRISKE, T	1843	3	5	0	-112	16	16
FABIJONAS, R	1785D	5	2	0	-13	225	198
ROSLING, G	1433	2	3	1	-72	35	25

MOTOROLA

NAME	RATING	SEASON RATING			CHANGE	TOTAL GAMES	RATED GAMES
		W	L	D			
EASTER, R	2094	3	5	3	-63	33	32
SAMELSON, C	2080C	6	2	1	-14	115	110
WALLACH, C	2051	1	3	1	-35	5	5
CIESLEK, D	2027	6	1	0	-9	29	27
BLOOM, B	2007	2	5	2	-115	42	38
OGASAWARA, L	1858	5	0	4	29	75	71
AUGSBURGER, L	1791	9	1	1	24	48	39
GONCHAROFF, N	1776D	5	1	1	-2	402	350
OGASAWARA, R	1604D	1	0	0	0	240	220
LESTER, M	1588	1	0	0	0	8	5
HERNANDEZ, D	1462	1	3	0	-31	65	54
OLUND, P	1391#	4	1	0	45	14	7
GRYPARIS, J	1364	1	2	0	-7	75	48
MOLES, J	1209	0	3	1	0	11	5
SZAUKELLIS, W	0000?	1	2	0	0	3	3
WEST, R	0000?	3	0	0	0	3	0
DUNCAN, T	0000?	0	1	0	0	1	1
REVULURI, K	0000?	0	2	0	0	9	4
MORGAN, T	0000?	0	1	0	0	1	0

EXEMPLARS

NAME	RATING	SEASON RATING			CHANGE	TOTAL GAMES	RATED GAMES
		W	L	D			
WONG, P	2207C	3	3	1	-36	142	137
CREWSE, L	2066	1	1	3	-32	59	57
KRAKAU, H	1962	2	0	1	15	52	48
SCHULMAN, R	1925C	2	1	0	17	174	165
SKULSKI, I	1838	3	1	2	25	73	70
SUERTH, F	1562	2	5	0	-87	94	88
OELHAFEN, A	1316*	1	3	0	-26	29	21
EDWARDS, S	1241	1	1	0	-13	62	48

UOP PROCESS DIV.

NAME	RATING	SEASON RATING			CHANGE	TOTAL GAMES	RATED GAMES
		W	L	D			
STEVANOVIC, M	2243C	4	2	1	-2	125	119
BOLDINGH, E	2087*	5	2	1	49	16	16
MICKLICH, F	1809C	4	3	2	38	116	103
WALLIN, R	1784*	1	1	0	22	21	21
BRIONES, M	1706C	4	3	0	44	113	106
SAJBEL, P	1706	5	2	1	84	39	37
STUHLBARG, D	1519C	2	3	0	-16	125	107
CHEVERESAN, S	1411	4	2	1	65	103	69
VAN ZILE, C	1379#	1	1	2	-19	8	7

SEARS

NAME	RATING	SEASON			RATING CHANGE	TOTAL GAMES	RATED GAMES
		W	L	D			
GILES, M	2430	1	1	1	-51	27	26
REYES, R	2288C	4	0	4	-6	186	168
GOLLA, R	2035C	4	0	1	33	184	162
LATIMER, E	2027D	4	4	1	-32	215	186
BROCKETT, M	1771	0	2	0	-60	14	11
SCHWARTZ, S	1719C	2	1	5	-4	176	145
ANGLIN, B	1684*	0	0	1	16	32	21
MORTON, B	1585*	2	3	2	4	25	23
CHAN, H	1563	0	3	1	-78	84	67
MILLER, TT	1543#	2	3	1	0	6	5
CIBA, F	1406	0	0	1	-11	72	57
HARRIS, F	0000?	0	1	0	0	1	0
ZEFF, T	0000?	0	1	0	0	1	1
ROSKO, D	0000?	0	1	0	0	1	1

AMOCO CORP.

NAME	RATING	SEASON			RATING CHANGE	TOTAL GAMES	RATED GAMES
		W	L	D			
HODINA, J	2023	4	7	1	11	16	16
SMILEY, R	2002	6	1	2	72	32	31
ATKINSON, J	1845	2	6	4	-52	78	63
SOPRYCH, T	1620	4	5	3	-20	103	79
WENTLING, C	1513	3	4	1	-15	70	50
KRULL, E	1389*	4	5	2	88	28	19
HAMILTON, L	1379#	2	5	1	0	8	5
CAMPBELL, C	1186	0	2	0	-6	69	40
GIBSON, K	0000?	0	1	0	0	1	1

CHICAGO RES. & TRDG.

NAME	RATING	SEASON			RATING CHANGE	TOTAL GAMES	RATED GAMES
		W	L	D			
JASAITIS, A	2175	4	1	5	25	90	80
LOSOFF, A	1996	5	3	1	-7	22	20
FRIESEMA, W	1982*	4	4	1	-22	26	24
DENG, J	1554#	6	2	2	45	10	8
RO, D	1502*	1	5	0	-59	17	15
BERNARD, D	1239*	4	4	1	132	20	15
RIEDERER, D	1086#	1	6	0	-29	8	8
SIMS, B	0000?	0	1	0	0	1	0

ALUMNI 2ND STRINGERS

NAME	RATING	SEASON			RATING CHANGE	TOTAL GAMES	RATED GAMES
		W	L	D			
GELBART, S	2272	0	0	1	3	15	15
HUTTAR, C	2016	0	0	1	-17	34	32
WINSTON, H	1994	3	3	1	22	9	9
RZESZUTKO, R	1977	2	3	5	21	74	61
FRANEK, M	1854	3	3	4	9	89	68
BEARD, G	1833	5	2	2	26	30	25
CHARKOVSKY, R	1693*	5	2	3	-51	19	13
DAVIDSON, M	1641*	3	1	0	25	15	11
LEMPA, K	1524*	1	0	0	0	23	14
SMITH, JM	1196*	1	4	1	-38	21	14

CHICAGO MERC. EXCH.

NAME	RATING	SEASON			RATING CHANGE	TOTAL GAMES	RATED GAMES
		W	L	D			
ZEIDEL, J	1964	0	2	2	-23	16	16
FRANK, M	1731#	0	4	2	-3	6	6
SULLIVAN, C	1635#	4	6	0	45	10	9
COTE, J	1311#	1	5	2	16	8	7
GROTANS, G	1258*	1	8	0	-52	11	11
RUDY, J	1236*	0	3	0	-10	16	13
GAVIN, L	1231	0	8	0	-9	34	27
REID, D	0000?	0	1	0	0	4	4
HILTON, J	0000?	0	6	0	0	18	7
BARRON, L	0000?	0	1	0	0	1	1
BROWN, S	0000?	0	1	0	0	1	1
BAKER, LR	0000?	0	2	0	0	2	2

CHICAGO POST OFFICE

NAME	RATING	SEASON			RATING CHANGE	TOTAL GAMES	RATED GAMES
		W	L	D			
INUMERABLE, F	2224	7	1	2	35	40	39
GREGORY, J	2169	5	4	0	-57	32	30
MARCOWKA, R	2007C	9	4	0	5	140	122
ROGERS, N	1973*	4	3	1	-13	26	22
REED, L	1737#	1	0	0	2	10	8
COOPER, W	1678	5	3	3	-21	46	42
CARTER, L	1500	6	3	1	3	41	29
PETWAY, L	1471*	3	4	0	-69	26	17
HOWARD, W	1177*	6	0	1	76	24	11

BELL LABS ROYALS

NAME	RATING	SEASON			RATING CHANGE	TOTAL GAMES	RATED GAMES
		W	L	D			
GUIO, J	2189	4	1	3	-3	21	21
DOBROVOLNY, C	1942	6	1	2	44	29	25
ROSLEY, D	1830	2	2	0	-17	33	31
HAHNE, D	1567	1	3	4	-20	46	42
HICKS, C	1461	6	2	0	101	41	37
CROWE, R	1424*	4	1	2	97	15	14
ANDERSON, CJ	1254*	3	3	0	56	15	11

A & B RADIO

NAME	RATING	SEASON			RATING CHANGE	TOTAL GAMES	RATED GAMES
		W	L	D			
LASKY, JIM	1712#	1	0	0	0	6	5
O'DELL, DW	1610	0	6	2	-33	81	72
ELLERY, G	1479#	1	1	1	24	10	9
LASKY, N	1467	1	3	1	-39	78	68
LASKY, J	1406	2	3	0	21	47	40
MCGRIFF, M	1404	0	5	0	-62	29	26
MIKULECKY, B	1312	1	5	0	-66	84	73
HUMPF, R	1293*	0	1	0	-4	25	23
WEISNER, T	1142	0	3	0	-15	59	40
BOOKER, G	0000?	0	3	1	0	4	4

NORTHROP CORP.

NAME	RATING	SEASON			CHANGE	TOTAL RATED GAMES	RATED GAMES
		W	L	D			
JAKSTAS, K	2210	5	2	2	21	100	98
GOLUMBOVSKI, P	2152*	7	1	3	110	18	18
DIAZ, P	1979	7	4	0	-7	11	9
BURIAN, D	1670	5	4	2	27	94	77
VIGANTS, A	1617	6	3	2	-13	11	10
STEMPINSKI, P	1423	4	6	0	-105	18	16
ELEK, G	1001*	0	5	1	-6	12	10
ALMAZAN, S	0000?	3	3	1	0	7	4
BISH, D	0000?	2	1	0	0	3	1

ALUMNI CENTRAL

NAME	RATING	SEASON			CHANGE	TOTAL RATED GAMES	RATED GAMES
		W	L	D			
CZERNIECKI, A	2267C	6	2	2	-14	155	147
WIRTSCHAFTER, D	2109	5	1	1	45	69	58
COX, M	2013C	4	2	1	-11	113	93
BRONFELD, A	1831	5	4	2	-57	29	26
LITVINAS, A	1773C	6	3	1	-48	133	98
BROTSOS, J	1583D	5	3	2	-19	215	179

CONTINENTAL BANK

NAME	RATING	SEASON			CHANGE	TOTAL RATED GAMES	RATED GAMES
		W	L	D			
LORING, S	1982	1	1	0	4	6	5
NELSON, H	1967	5	2	0	77	21	18
FRAATS, D	1853	0	4	2	-43	27	25
KOGAN, G	1844*	2	0	1	-5	20	14
PARAOAN, E	1765	6	4	2	-46	71	62
SOMBONG, M	1754	6	4	3	-37	73	67
DYCZKOWSKI, R	1680#	4	2	2	0	8	5
SIEGEL, R	1541	5	2	2	36	73	57
PATEL, R	1430*	2	4	0	-60	17	13
HAMMOND, M	1354*	8	4	0	90	34	22
ZOELLNER, J	1196	4	12	2	37	78	49
MCINTOSH, S	1164#	3	1	1	99	12	8
MOODY, L	0000?	0	2	0	0	10	4

ARGONNE KNIGHTS

NAME	RATING	SEASON			RATING CHANGE	TOTAL GAMES	RATED GAMES
		W	L	D			
LEVINE, D	2397	6	0	1	38	40	35
BENEDEK, R	2211C	6	0	3	-7	208	200
BERRY, G	2112D	6	0	2	16	268	222
GREEN, D	1811C	0	1	0	-10	146	126
DECMAN, S	1811C	1	3	2	-35	184	159
BAURAC, D	1676C	3	3	3	-38	155	137
KELLOGG, K	1675C	5	2	0	-3	178	162
HILL, R	1671	7	1	2	77	38	33
CHIU, H	1647*	6	0	1	79	18	18
ZAROMB, S	1480	2	1	0	-8	38	28
DAWSON, J	1408	1	2	0	-40	12	9

BELL LABS DRAGONS

NAME	RATING	SEASON			RATING CHANGE	TOTAL GAMES	RATED GAMES
		W	L	D			
TEGEL, F	2124D	3	4	4	-65	265	232
JACOBS, N	1968C	6	2	1	29	165	161
CHRISTIAN, R	1843C	3	4	4	-74	119	107
DURKEE, D	1784C	6	1	2	22	110	102
WARD, C	1602D	5	3	3	-20	219	205
WHITSITT, S	1571*	1	1	1	-20	21	13
BECKLEY, S	1392*	5	3	2	108	20	19
KELLY, S	1308*	0	1	0	-31	24	18

AT&T CHARGERS

NAME	RATING	SEASON			RATING CHANGE	TOTAL GAMES	RATED GAMES
		W	L	D			
WARREN, J	2173D	1	0	1	0	346	299
RADAVICIUS, E	1728C	5	2	2	32	188	160
KUMRO, D	1728D	3	6	1	-7	280	258
STAMM, V	1717D	3	1	2	19	210	190
DOBR, K	1565D	6	1	1	51	291	266
THOMAS, J	1548C	2	3	1	-20	125	92
BRADY, R	1355*	2	4	0	-47	14	12
SWIDERSKI, M	1351C	2	2	0	0	141	117

ROCKWELL INT'L

NAME	RATING	SEASON			RATING CHANGE	TOTAL GAMES	RATED GAMES
		W	L	D			
JONES, B	2149	2	0	4	30	42	41
MITCHAM, L	1657#	1	2	2	0	5	5
RAFACZ, W	1609	1	6	1	-97	30	27
RAFACZ, T	1606	2	4	0	-34	65	59
EFRON, D	1542	4	2	0	2	35	32
MCQUINN, J	1539	3	3	1	-43	55	49
DEWITT, G	1374	2	2	1	5	100	85
DEZONNO, T	0000?	0	1	0	0	8	4

J. I. CASE

NAME	RATING	SEASON RATING			TOTAL RATED	GAMES	GAMES
		W	L	D			
WHITE, H	1752	1	6	1	25	29	29
SATTERLEE, D	1615	1	3	3	59	98	90
KLINEFELTER, H	1454	3	4	1	11	55	46
KALE, S	1450*	1	5	2	32	14	14
KANAS, W	1265	0	3	2	3	95	80
REID, C	1249	1	4	1	-3	30	27
MOTYCKA, R	1197	0	5	0	-63	65	53
CARTER, D	1081*	0	1	1	-3	23	21
GAMEZ, M	0000?	1	2	0	0	3	3
GUTNIK, I	0000?	0	1	0	0	1	1

AMOCO RESEARCH LABS

NAME	RATING	SEASON RATING			TOTAL RATED	GAMES	GAMES
		W	L	D			
KUKES, S	2326#	2	1	0	0	8	8
ROSE, K	1975	2	0	1	48	31	30
SAJKOWSKI, D	1920	1	1	4	-1	44	41
PULTS, J	1814*	2	1	2	-11	18	11
RINGENBERG, T	1363*	0	4	1	-1	34	23
CAMPBELL, D	0000?	1	1	1	0	5	1
SCHATTKE, N	0000?	0	4	0	0	4	1
SUH, G	0000?	1	2	2	0	5	4
MANILLA, M	0000?	2	3	0	0	5	3
POMA, D	0000?	0	4	0	0	4	2

BELL LABS INDIANS

NAME	RATING	SEASON RATING			TOTAL RATED	GAMES	GAMES
		W	L	D			
LUDWIG, T	2149	3	2	3	-18	84	81
STINSON, M	2028	2	0	1	30	87	82
BUCHNER, R	2027	3	0	0	36	24	21
BHOJWANI, R	1767#	3	3	2	-12	8	6
BLACKMON, E	1703	3	4	2	14	65	50
EUSTACE, D	1346*	4	3	4	50	36	20
SHEU, G	1345*	5	1	0	73	25	15
TURPIN, S	0000?	1	2	0	0	10	4
FLYNN, T	0000?	2	2	0	0	4	1
LODER, S	0000?	2	0	0	0	2	1

WHEATON COLLEGE

NAME	RATING	SEASON RATING			TOTAL RATED	GAMES	GAMES
		W	L	D			
WALHOUT, P	2088	1	4	3	-87	41	38
UNDERWOOD, W	1963C	2	2	0	-4	123	104
WIENS, P	1387	4	3	1	7	27	17
PYLES, C	1294#	4	3	0	9	17	9
TAYLOR, F	1214*	0	6	2	-10	26	16
FIPPINGER, P	0000?	1	2	0	0	6	3
SEEGER, S	0000?	0	0	1	0	1	1
NELSON, R	0000?	2	0	0	0	2	0
POLIZZANO, S	0000?	0	2	0	0	2	1
POTTS, S	0000?	0	1	0	0	1	0
POYNOR, D	0000?	1	2	0	0	3	1

FERMILAB

NAME	RATING	SEASON RATING			CHANGE	TOTAL GAMES	RATED GAMES
		W	L	D			
KOZLOVSKY, M	2283*	3	2	1	9	21	19
SPIEGEL, L	2100	5	3	3	-17	106	98
GLICENSTEIN, J	1934	2	2	4	-39	8	7
KALIHHER, C	1903	3	1	1	-10	55	45
GAINES, I	1749C	5	0	1	25	151	136
HARRIS, R	1578	1	1	0	0	2	0
DOWAT, C	1496	3	1	0	38	4	4
ROSEN, JJ	0000?	1	0	0	0	2	0
CISKO, G	0000?	4	4	1	0	9	4
COLE, P	0000?	1	3	1	0	5	2
PARA, A	0000?	6	1	0	0	8	4

AT&T TYROS

NAME	RATING	SEASON RATING			CHANGE	TOTAL GAMES	RATED GAMES
		W	L	D			
STOLTZ, B	1933	1	1	2	-5	36	31
BLAZIE, J	1826	2	3	2	44	86	72
SHAFF, R	1538C	3	2	1	-1	143	109
THOMAS, G	1415	2	4	2	19	59	45
VELAYUTHAM, S	1305#	1	1	0	-26	9	6
SCHWARTZ, M	1081#	2	0	3	0	15	6
RIPPE, D	0000?	0	3	0	0	3	1
KOEPELE, J	0000?	1	1	0	0	8	3
TROPP, W	0000?	0	2	0	0	2	0
LEE, R	0000?	1	1	0	0	3	3
ZIMMERMAN, T	0000?	1	1	0	0	2	1
MCPHAIL, C	0000?	2	2	0	0	1	1
RADULSKI, R	0000?	0	1	0	0	1	1

NORTH DIVISION TOP TEN

STEVANOVIC, M	UOP	2243C
JAKSTAS, K	NORTH	2210
WONG, P	EXMPL	2207C
GOLUMBOVSKI, P	NORTH	2152*
SIWEK, M	KEMPR	2120
EASTER, R	MTRLA	2094
BOLDINGH, E	UOP	2087*
BUERGER, E	EXCAL	2082D
SAMELSON, C	MTRLA	2080C
LEONG, G	EXCAL	2072C

EAST DIVISION TOP TEN

GILES, M	SEARS	2430
REYES, R	SEARS	2288C
GELBART, S	SECST	2272
CZERNIECKI, A	ALUMN	2267C
KRAS, T	ALUMN	2262
INUMERABLE, F	PSTOF	2224
JASAITIS, A	CRT	2175
GREGORY, J	PSTOF	2169
WIRTSCHAFTER, D	ALUMN	2109
GOLLA, R	SEARS	2035C

NEAR WEST DIVISION TOP TEN

LEVINE, D	KNIGHT	2397
BENEDEK, R	KNIGHT	2211C
GUIO, J	ROYLS	2189
WARREN, J	CHRGR	2173D
JONES, B	ROCKW	2149
TEGEL, F	DRGNS	2124D
BERRY, G	KNIGHT	2112D
BORUM, J	DRGNS	2006
JACOBS, N	DRGNS	1968C
YOUNG, C	KNIGHT	1952C

FAR WEST DIVISION TOP TEN

CHACHERE, L	INDNS	2362
KOZLOVSKY, M	FERMI	2283*
LUDWIG, T	INDNS	2149
SPIEGEL, L	FERMI	2100
WALHOUT, P	WHEAT	2088
STINSON, M	INDNS	2028
BUCHNER, R	INDNS	2027
PEIJFFERS, S	INDNS	1990
ROSE, K	AMOCO	1975
ROSE, J	FERMI	1972

MOST IMPROVED PLAYERS

BERNARD, D	CRT	132
GOLUMBOVSKI, P	NORTH	110
BECKLEY, S	DRGNS	108
CUMMUTA, P	KEMPR	104
HICKS, C	ROYLS	101
CROWE, R	ROYLS	97
HAMMOND, M	CONBK	90
KRULL, E	AMCRP	88
SAJBEL, P	UOP	84
CHIU, H	KNIGHT	79

NAME	TEAM	W	L	D	RATING	NAME	TEAM	W	L	D	RATING
ALEMAN, M	AMOCO	0	0	0	0000?	CHARKOVSKY, R	SECST	5	2	3	1693*
ALMAZAN, S	NORTH	3	3	1	0000?	CHESBROUGH, C	CRT	0	0	0	0000?
ANDERSON, CJ	ROYLS	3	3	0	1254*	CHEVERESAN, S	UOP	4	2	1	1411
ANDERSON, N	EXCAL	0	0	0	1782C	CHIU, H	KNGHT	6	0	1	1647*
ANGLIN, B	SEARS	0	0	1	1684*	CHOUDRY, A	KEMPR	1	1	0	0000?
ANSARI, N	WALGR	0	0	0	1650	CHRISTIAN, R	DRGNS	3	4	4	1843C
ATKINSON, J	AMCRP	2	6	4	1845	CHURCHILL, W	INDNS	0	0	0	1762
AUGSBURGER, L	MTRLA	9	1	1	1791	CIBA, F	SEARS	0	0	1	1406
BAKER, B	FLPRO	0	5	0	1006	CIESLEK, D	MTRLA	6	1	0	2027
BAKER, LR	MERC	0	2	0	0000?	CISKO, G	FERMI	4	4	1	0000?
BARRON, L	MERC	0	1	0	0000?	CLARE, B	ROOKS	0	0	0	2185
BAURAC, D	KNGHT	3	3	3	1676C	CLEMONS, V	AMCRP	0	0	0	0000?
BAYUS, T	MTRLA	0	0	0	0000?	COLE, P	FERMI	1	3	1	0000?
BEARD, G	SECST	5	2	2	1833	COOPER, J	AMCRP	0	0	0	0000?
BECKLEY, S	DRGNS	5	3	2	1392*	COOPER, W	PSTOF	5	3	3	1678
BENEDEK, R	KNGHT	6	0	3	2211C	COTE, J	MERC	1	5	2	1311#
BERNARD, D	CRT	4	4	1	1239*	COX, M	ALUMN	4	2	1	2013C
BERRY, G	KNGHT	6	0	2	2112D	CREWSE, L	EXMPL	1	1	3	2066
BHOJWANI, R	INDNS	3	3	2	1767#	CROWE, R	ROYLS	4	1	2	1424*
BINGLE, J	ROOKS	0	0	0	1481C	CRUZ, R	FLPRO	0	0	0	1418*
BISH, D	NORTH	2	1	0	0000?	CUMMUTA, P	KEMPR	4	2	2	1377
BLACKMON, E	INDNS	3	4	2	1703	CZERNIECKI, A	ALUMN	6	2	2	2267C
BLAZIE, J	TYROS	2	3	2	1826	DANELIUK, T	SECST	0	0	0	0000?
BLOEDOW, P	KEMPR	1	6	1	1472C	DANES, D	ROOKS	0	0	0	0000?
BLOOM, B	MTRLA	2	5	2	2007	DAVIDSON, M	SECST	3	1	0	1641*
BOHMBACH, J	CRT	0	0	0	1447*	DAWSON, J	KNGHT	1	2	0	1408
BOLDINGH, E	UOP	5	2	1	2087*	DECMAN, S	KNGHT	1	3	2	1811C
BOLLIG, W	NORTH	0	0	0	0000?	DENG, J	CRT	6	2	2	1554#
BOOKER, G	RADIO	0	3	1	0000?	DEWITT, G	ROCKW	2	2	1	1374
BORUM, J	DRGNS	0	0	0	2006	DEZONNO, T	ROCKW	0	1	0	0000?
BRADY, R	CHRGR	2	4	0	1355*	DIAZ, P	NORTH	7	4	0	1979
BRANDT, W	DRGNS	0	0	0	1402*	DOBR, K	CHRGR	6	1	1	1565D
BRIONES, M	UOP	4	3	0	1706C	DOBROVOLNY, C	ROYLS	6	1	2	1942
BROCKETT, M	SEARS	0	2	0	1771	DORRIES, T	FERMI	0	0	0	1893*
BRONFELD, A	ALUMN	5	4	2	1831	DOWAT, C	FERMI	3	1	0	1496
BROSKA, P	MERC	0	0	0	1423#	DUNCAN, T	MTRLA	0	1	0	0000?
BROTSOS, J	ALUMN	5	3	2	1583D	DURKEE, D	DRGNS	6	1	2	1784C
BROWN, S	MERC	0	1	0	0000?	DYCZKOWSKI, R	CONBK	4	2	2	1680#
BROZOVICH, J	TYROS	0	0	0	1781C	EASTER, R	MTRLA	3	5	3	2094
BUCHNER, R	INDNS	3	0	0	2027	EDWARDS, S	EXMPL	1	1	0	1241
BUERGER, E	EXCAL	4	5	0	2082D	EFRON, D	ROCKW	4	2	0	1542
BURBA, K	ROOKS	0	0	0	1414C	ELEK, G	NORTH	0	5	1	1001*
BURIAN, D	NORTH	5	4	2	1670	ELLERY, G	RADIO	1	1	1	1479#
CAGNEY, D	KEMPR	0	0	0	0000?	EUSTACE, D	INDNS	4	3	4	1346*
CAMPBELL, C	AMCRP	0	2	0	1186	FABIJONAS, R	EXCAL	5	2	0	1785D
CAMPBELL, D	AMOCO	1	1	1	0000?	FAHRENHOLTZ, S	MTRLA	0	0	0	1739#
CARTER, D	JCASE	0	1	1	1081*	FELDMAN, A	FLPRO	1	5	1	1412
CARTER, L	PSTOF	6	3	1	1500	FELICIANO, H	PSTOF	0	0	0	0000?
CHACHERE, L	INDNS	0	0	0	2362	FILICHIA, T	KEMPR	1	2	0	0000?
CHAN, H	SEARS	0	3	1	1563	FIPPINGER, P	WHEAT	1	2	0	0000?

? - UNRATED

- 5 TO 9 RATED GAMES

* - 10 TO 24 RATED GAMES

C - CENTURY CLUB MEMBER

D - DOUBLE CENTURION

NAME	TEAM	W	L	D	RATING	NAME	TEAM	W	L	D	RATING
FISCHLER, M	FERMI	0	0	0	1337	ILANGA, R	FLPRO	0	0	0	2023*
FLYNN, T	INDNS	2	2	0	0000?	INUMERABLE, F	PSTOF	7	1	2	2224
FRAATS, D	CONBK	0	4	2	1853	ISAAC, G	CRT	0	0	0	0000?
FRANEK, M	SECST	3	3	4	1854	ISAAC, T	PSTOF	0	0	0	1667
FRANK, M	MERC	0	4	2	1731#	JACOBS, N	DRGNS	6	2	1	1968C
FRANTZIS, G	MERC	0	0	0	0000?	JAKSTAS, K	NORTH	5	2	2	2210
FREY, M	FERMI	0	0	0	0000?	JASAITIS, A	CRT	4	1	5	2175
FRIDRICH, C	MTRLA	0	0	0	1427#	JONES, B	ROCKW	2	0	4	2149
FRIESEMA, W	CRT	4	4	1	1982*	KALE, S	JCASE	1	5	2	1450*
FRISKE, T	EXCAL	3	5	0	1843	KALIHHER, C	FERMI	3	1	1	1903
GAINES, I	FERMI	5	0	1	1749C	KANAS, W	JCASE	0	3	2	1265
GAMEZ, M	JCASE	1	2	0	0000?	KARGE, W	KEMPR	0	0	0	1269
GARLAND, G	KEMPR	0	0	0	1694	KARLOVICS, S	EXCAL	0	0	0	1820C
GAVIN, L	MERC	0	8	0	1231	KELLOGG, K	KNGHT	5	2	0	1675C
GELBART, S	SECST	0	0	1	2272	KELLY, S	DRGNS	0	1	0	1308*
GIBSON, K	AMCRP	0	1	0	0000?	KLEIN, P	NORTH	0	0	0	0000?
GILES, M	SEARS	1	1	1	2430	KLINEFELTER, H	JCASE	3	4	1	1454
GLICENSTEIN, J	FERMI	2	2	4	1934	KNUTSON, G	KEMPR	0	0	0	0000?
GOLLA, R	SEARS	4	0	1	2035C	KOEPELE, J	TYROS	1	1	0	0000?
GOLUMBOVSKI, P	NORTH	7	1	3	2152*	KOGAN, G	CONBK	2	0	1	1844*
GONCHAROFF, N	MTRLA	5	1	1	1776D	KOZLOVSKY, M	FERMI	3	2	1	2283*
GREEN, D	KNGHT	0	1	0	1811C	KRAKAU, H	EXMPL	2	0	1	1962
GREGORY, J	PSTOF	5	4	0	2169	KRAS, T	ALUMN	0	0	0	2262
GROTANS, G	MERC	1	8	0	1258*	KRULL, E	AMCRP	4	5	2	1389*
GRYPARIS, J	MTRLA	1	2	0	1364	KUEHLHORN, B	MTRLA	0	0	0	0000?
GUILLEN, B	KEMPR	0	2	0	0000?	KUKES, S	AMOCO	2	1	0	2326#
GUIO, J	ROYLS	4	1	3	2189	KUMRO, D	CHRGR	3	6	1	1728D
GUTNIK, I	JCASE	0	1	0	0000?	LAMBIRIS, J	KEMPR	0	1	0	0000?
HAHNE, D	ROYLS	1	3	4	1567	LANNOYE, D	WALGR	0	0	0	1698*
HAMILTON, L	AMCRP	2	5	1	1379#	LASKY, J	RADIO	2	3	0	1406
HAMMOND, M	CONBK	8	4	0	1354*	LASKY, JIM	RADIO	1	0	0	1712#
HARRINGER, R	TYROS	0	0	0	1619C	LASKY, N	RADIO	1	3	1	1467
HARRIS, F	SEARS	0	1	0	0000?	LATIMER, E	SEARS	4	4	1	2027D
HARRIS, R	FERMI	1	1	0	1578	LEE, A	CRT	0	0	0	0000?
HERNANDEZ, D	MTRLA	1	3	0	1462	LEE, R	TYROS	1	1	0	0000?
HERSHEY, S	MTRLA	0	0	0	0000?	LEMPA, K	SECST	1	0	0	1524*
HERZOG, W	NORTH	0	0	0	0000?	LEONG, D	SECST	0	0	0	1945*
HES ^c , B	FLPRO	1	3	0	1517	LEONG, G	EXCAL	0	0	0	2072C
HICKS, C	ROYLS	6	2	0	1461	LESTER, M	MTRLA	1	0	0	1588
HILL, R	KNGHT	7	1	2	1671	LEVINE, D	KNGHT	6	0	1	2397
HILLIARD, J	CONBK	0	1	0	0000?	LITVINAS, A	ALUMN	6	3	1	1773C
HILTON, J	MERC	0	6	0	0000?	LLOYD, K	PSTOF	0	0	0	0000?
HODINA, J	AMCRP	4	7	1	2023	LODER, S	INDNS	2	0	0	0000?
HOLM, B	AMOCO	0	0	0	1740	LORING, S	CONBK	1	1	0	1982
HORNER, L	CRT	0	0	0	0000?	LOSOFF, A	CRT	5	3	1	1996
HOWARD, W	PSTOF	6	0	1	1177*	LUDWIG, T	INDNS	3	2	3	2149
HUGHES, N	KEMPR	0	2	1	1825C	MANILLA, M	AMOCO	2	3	0	0000?
HUMPF, R	RADIO	0	1	0	1293*	MARCOWKA, R	PSTOF	9	4	0	2007C
HUNG, N	MTRLA	1	0	0	0000?	MATHEWS, B	CRT	0	0	0	0000?
HUTTAR, C	SECST	0	0	1	2016	MATHUR, P	ROYLS	0	0	0	1316#

? - UNRATED

- 5 TO 9 RATED GAMES

* - 10 TO 24 RATED GAMES

C - CENTURY CLUB MEMBER

D - DOUBLE CENTURION

NAME	TEAM	W	L	D	RATING	NAME	TEAM	W	L	D	RATING
MCFARLIN, B	KEMPR	0	2	0	0000?	RAFACZ, W	ROCKW	1	6	1	1609
MCGRIFF, M	RADIO	0	5	0	1404	RAVANAM, S	JCASE	0	0	0	1219*
MCINTOSH, S	CONBK	3	1	1	1164#	REDEY, E	KNGHT	0	0	0	1025*
MCPHAIL, C	TYROS	2	2	0	0000?	REED, L	PSTOF	1	0	0	1737#
MCQUINN, J	ROCKW	3	3	1	1539	REHORST, R	FLPRO	0	4	0	0000?
MERTENS, P	NORTH	0	0	0	0000?	REID, C	JCASE	1	4	1	1249
MICKLICH, F	UOP	4	3	2	1809C	REID, D	MERC	0	1	0	0000?
MIKULECKY, B	RADIO	1	5	0	1312	RENNER, T	AMOCO	0	0	0	1631
MILLER, J	NORTH	0	0	0	0000?	REVULURI, K	MTRLA	0	2	0	0000?
MILLER, TT	SEARS	2	3	1	1543#	REYES, R	SEARS	4	0	4	2288C
MITCHAM, L	ROCKW	1	2	2	1657#	RIEDERER, D	CRT	1	6	0	1086#
MOLES, J	MTRLA	0	3	1	1209	RINGENBERG, T	AMOCO	0	4	1	1363*
MONZANI, A	FLPRO	0	1	0	1759	RIPPE, D	TYROS	0	3	0	0000?
MOODY, L	CONBK	0	2	0	0000?	RO, D	CRT	1	5	0	1502*
MORGAN, T	MTRLA	0	1	0	0000?	ROGERS, N	PSTOF	4	3	1	1973*
MORTON, B	SEARS	2	3	2	1585*	ROSE, J	FERMI	0	0	0	1972
MOTYCKA, R	JCASE	0	5	0	1197	ROSE, K	AMOCO	2	0	1	1975
MUNOZ, A	INDNS	0	0	0	1247	ROSEN, JJ	FERMI	1	0	0	0000?
NELSON, H	CONBK	5	2	0	1967	ROHING, G	EXCAL	2	3	1	1433
NELSON, R	WHEAT	2	0	0	0000?	ROSKO, D	SEARS	0	1	0	0000?
NWABUDE, O	ROYLS	0	0	0	0000?	ROSLEY, D	ROYLS	2	2	0	1830
O'DELL, DW	RADIO	0	6	2	1610	RUDY, J	MERC	0	3	0	1236*
OELHAFEN, A	EXMPL	1	3	0	1316*	RZESZUTKO, R	SECST	2	3	5	1977
OGASAWARA, L	MTRLA	5	0	4	1858	SAGALOVSKY, L	ROOKS	0	0	0	1911
OGASAWARA, R	MTRLA	1	0	0	1604D	SAJBEL, P	UOP	5	2	1	1706
OLSEN, A	KEMPR	0	4	0	0000?	SAJKOWSKI, D	AMOCO	1	1	4	1920
OLUND, P	MTRLA	4	1	0	1391#	SAMELSON, C	MTRLA	6	2	1	2080C
ORCUT, J	CRT	0	0	0	0000?	SATCHELL, E	WHEAT	0	0	0	1491#
OSTERLUND, R	EXCAL	6	2	1	1902	SATTERLEE, D	JCASE	1	3	3	1615
OTAKAN, V	FLPRO	0	1	0	0000?	SCHATTKE, N	AMOCO	0	4	0	0000?
PAKASKI, A	KEMPR	0	0	0	0000?	SCHULMAN, R	EXMPL	2	1	0	1925C
PARA, A	FERMI	6	1	0	0000?	SCHUTE, E	MERC	0	0	0	0000?
PARAOAN, E	CONBK	6	4	2	1765	SCHWARTZ, M	TYROS	2	0	3	1081#
PATEL, R	CONBK	2	4	0	1430*	SCHWARTZ, S	SEARS	2	1	5	1719C
PAWLUS, D	MTRLA	0	0	0	0000?	SECHLER, M	WHEAT	0	0	0	0000?
PEEL, M	WALGR	0	0	0	1902	SEEGER, S	WHEAT	0	0	1	0000?
PEIJFFERS, S	INDNS	0	0	0	1990	SHACHTER, J	INDNS	0	0	0	1569
PETERS, P	FLPRO	0	3	0	1112*	SHAFF, R	TYROS	3	2	1	1538C
PETWAY, L	PSTOF	3	4	0	1471*	SHEU, G	INDNS	5	1	0	1345*
POLIZZANO, S	WHEAT	0	2	0	0000?	SIEGEL, R	CONBK	5	2	2	1541
POMA, D	AMOCO	0	4	0	0000?	SIMS, B	CRT	0	1	0	0000?
POTTS, S	WHEAT	0	1	0	0000?	SIWEK, M	KEMPR	4	3	1	2120
POYNOR, D	WHEAT	1	2	0	0000?	SKULSKI, I	EXMPL	3	1	2	1838
PUECHNER, R	KEMPR	0	2	0	0000?	SLUSSER, C	CRT	0	0	0	0000?
PULTS, J	AMOCO	2	1	2	1814*	SMILEY, R	AMCRP	6	1	2	2002
PYLES, C	WHEAT	4	3	0	1294#	SMITH, JM	SECST	1	4	1	1196*
RADAVICIUS, E	CHRGR	5	2	2	1728C	SNELLING, C	PSTOF	0	0	0	0000?
RADEMACHER, H	MTRLA	0	0	0	0000?	SOMASUNDARAM, S	TYROS	0	0	0	0000?
RADULSKI, R	TYROS	0	1	0	0000?	SOMBONG, M	CONBK	6	4	3	1754
RAFACZ, T	ROCKW	2	4	0	1606	SOPRYCH, T	AMCRP	4	5	3	1620

? - UNRATED

- 5 TO 9 RATED GAMES

* - 10 TO 24 RATED GAMES

C - CENTURY CLUB MEMBER

D - DOUBLE CENTURION

NAME	TEAM	W	L	D	RATING	NAME	TEAM	W	L	D	RATING
SPIEGEL, L	FERMI	5	3	3	2100	VELAYUTHAM, S	TYROS	1	1	0	1305#
SPLIT, B	MERC	0	0	0	0000?	VIGANTS, A	NORTH	6	3	2	1617
STAMM, V	CHRGR	3	1	2	1717D	VOLOSHIN, G	WALGR	0	0	0	1636#
STEMPINSKI, P	NORTH	4	6	0	1423	WALHOUT, P	WHEAT	1	4	3	2088
STEVANOVIC, M	UOP	4	2	1	2243C	WALKER, R	FERMI	0	0	0	1376C
STINSON, M	INDNS	2	0	1	2028	WALLACH, C	MTRLA	1	3	1	2051
STOLTZ, B	TYROS	1	1	2	1933	WALLIN, R	UOP	1	1	0	1784*
STUHLBARG, D	UOP	2	3	0	1519C	WALSH, W	ROOKS	0	0	0	1503C
SUERTH, F	EXMPL	2	5	0	1562	WARD, C	DRGNS	5	3	3	1602D
SUH, G	AMOCO	1	2	2	0000?	WARREN, J	CHRGR	1	0	1	2173D
SULLIVAN, C	MERC	4	6	0	1635#	WEARY, M	MTRLA	0	0	0	0000?
SULLIVAN, J	EXCAL	7	2	0	2036C	WEILAND, S	WALGR	0	0	0	1112#
SVOBODA, D	MTRLA	0	0	0	0000?	WEISNER, T	RADIO	0	3	0	1142
SWIDERSKI, M	CHRGR	2	2	0	1351C	WEITZ, R	FLPRO	1	5	0	1834C
SZAUKELLIS, W	MTRLA	1	2	0	0000?	WENTLING, C	AMCRP	3	4	1	1513
TASKER, I	ROOKS	0	0	0	1453*	WEST, R	MTRLA	3	0	0	0000?
TATARSKY, J	KEMPR	2	4	0	1435#	WHITE, H	JCASE	1	6	1	1752
TAYLOR, F	WHEAT	0	6	2	1214*	WHITSITT, S	DRGNS	1	1	1	1571*
TEGEL, F	DRGNS	3	4	4	2124D	WIENCEK, T	KNIGHT	0	0	0	1239*
THOMAS, G	TYROS	2	4	2	1415	WIENS, P	WHEAT	4	3	1	1387
THOMAS, J	CHRGR	2	3	1	1548C	WILLIAMS, B	WALGR	0	0	0	0000?
THOMPSON, M	AMOCO	0	0	0	1390*	WINSTON, H	SECST	3	3	1	1994
THOMPSON, R	FLPRO	0	3	1	1044	WIRTSCHAFTER, D	ALUMN	5	1	1	2109
TOGAMI, P	JCASE	0	0	0	1173*	WONG, P	EXMPL	3	3	1	2207C
TOMCHEK, W	MTRLA	0	0	0	0000?	WYNARD, D	WHEAT	0	0	0	0000?
TRAN, D	MTRLA	0	0	0	0000?	WYNN, R	FLPRO	0	0	0	0000?
TRIPURANENI, D	ROCKW	0	0	0	0000?	YOUNG, C	KNIGHT	0	0	0	1952C
TRISCHUK, J	FERMI	0	0	0	0000?	ZAROMB, S	KNIGHT	2	1	0	1480
TROPP, W	TYROS	0	2	0	0000?	ZEFF, T	SEARS	0	1	0	0000?
TURPIN, S	INDNS	1	2	0	0000?	ZEIDEL, J	MERC	0	2	2	1964
TUSSING, D	KNIGHT	0	0	0	0000?	ZHANG, L	AMOCO	0	0	0	0000?
UNDERWOOD, W	WHEAT	2	2	0	1963C	ZIMMERMAN, T	TYROS	1	1	0	0000?
VAN MEER, J	KEMPR	1	0	0	1901	ZOELLNER, J	CONBK	4	12	2	1196
VAN ZILE, C	UOP	1	1	2	1379#						

? - UNRATED

- 5 TO 9 RATED GAMES

* - 10 TO 24 RATED GAMES

C - CENTURY CLUB MEMBER

D - DOUBLE CENTURION