

Chicago Industrial Chess League

Bulletin 2 Volume 34

November, 1990

It was recently brought to my attention that the CICL payment form for league dues is slightly in error. Although the total minimum amount that each team must submit is still \$65, the basic dues remains \$33. The one dollar increase approved at our last business meeting is the estimated increase in the projected cost of a banquet ticket, which was raised from \$17 to \$18. If you have not already sent in your payment in, please use the new form published in this bulletin, which correctly reflects this change.

Other items in this bulletin include a memorial tribute by league treasurer Jim Brotsos of the late Ron Dargis, a former league president. Also returning to the CICL bulletin is Marv Cox's 'Two Squares' column.

The rating list this month contains an 'adjusted' rating list. After discussion about the ratings deflation that seems to have taken place in the CICL in recent years, rating chairman Charlie Ward has devised a system to bring the distribution of ratings in the CICL closer to the distribution currently in the U.S. Chess Federation. The net result of this adjustment is higher ratings for most players rated over 1350. Charlie includes an explanation in the ratings chairman's report. Those with comments on these adjustments can call me at 312/353-1123 during the weekday or 708/636-3714 in the evenings or on the weekend.

Team captains in the Near West division should pay particular attention to the ratings chairman's report on team forfeits, since two teams in that division have already used up their allowance of two upper or middle board forfeits for the season.

- Bulletin Editor Marty Franek

ps: You can start sending games in for publications now. Please provide your own annotations if possible. Send games to me at 9044 S. 51st Avenue, Oak Lawn, IL 60453.

Remembering Ron Dargis

by Jim Brotsos

From 1957 to 1968-69, the C.I.C.L. had an 8-man team format. It grew from six teams to twelve. In the summer of 1969, I organized a new wing of the League consisting of 4-man teams. A few of the teams that joined this division were from companies that had once played in the 'senior' division. In September of 1969 my old team, R. R. Donnelley and Sons Company, rejoined the C.I.C.L. in the so-called Junior division. It was led by Ron Dargis.

Ron, who resided in Tinley Park, was a plant layout engineer at Donnelley and the chess leader. He was the President of the Lakeside Press Chess club and became the team captain of the new 4-man team. He was a class "B" player who normally played third board on a fine Donnelley team. The team was a front-runner all season, but was finally edged out in the spring of 1970 by the powerful Chicago Title and Trust team, (another founding team of the C.I.C.L.). Donnelley completed the season in sole possession of second place with a won-loss record of 9 1/2 - 1 1/2 and 30 1/2 games points compared to the C.T. & T.'s record of 10-1 and 30 game points. A good deal of the credit belonged to Ron, who was not only a good organizer-administrator, but an enthusiastic leader.

During the second season, 1970-71, the first set of elected officers from the Junior division included myself as the first President (formerly the title was 'Chairman'), and Ron Dargis as the first vice-President and Secretary. I was also the Bulletin Editor that year. Ron, who had excellent typing and reproducing services available at Donnelley, took on the role of publisher. With his major support, we received an excellent Bulletin at nominal cost. This publishing service continued for several years. Even after Ron moved on to Continental Can late in 1972, his typing assistant, Antoinette Walker, continued to produce the bulletin for a few years. The league must have saved several hundred dollars in production costs during that period. Since we had a beginning balance of less than \$98 in September, 1970, you can realize that Ron directly and indirectly saved the League membership a significant amount of bulletin expenses in those days. (ed. - Spoken like a true treasurer, Jim. M.F.).

In his second season in the League, Ron helped expand the Junior division to 15 teams and it was divided into the 'North' and 'South' divisions with two Donnelley teams in the South Division. Again Ron's Donnelley "A" team came in second in its division behind Argonnex, the first Alumni team. In addition to his team leadership and publishing energy, (eleven bulletins were sent out between July, 1970 and July, 1971), Ron helped purchase trophies and organize the first divisional All-Star match held on May 25th, 1971. This 20-board match was won by the Senior Division, 13-7.

It was no surprise that this talented and committed League leader was elected President of the League by postal ballot in the summer of 1971. During his reign, the Junior division grew to 19 teams and split into three geographical sections. Ron edited and published an excellent Bulletin and kept up an active program of special events. As usual, his Donnelley "A" team, (by then there was a "C" team as well), won its section but lost to the Junior division champions, Procon UOP. Ron was re-elected to the League presidency and continued an active program for the C.I.C.L. and for expansion with the 4-man team division. With the "Fischer Boom" and Ron's

leadership, the League expanded to 40 teams, including 28 teams in the Junior division. At that time we took a page from the Commercial Chess League of New York and divided both divisions into conferences by strength.

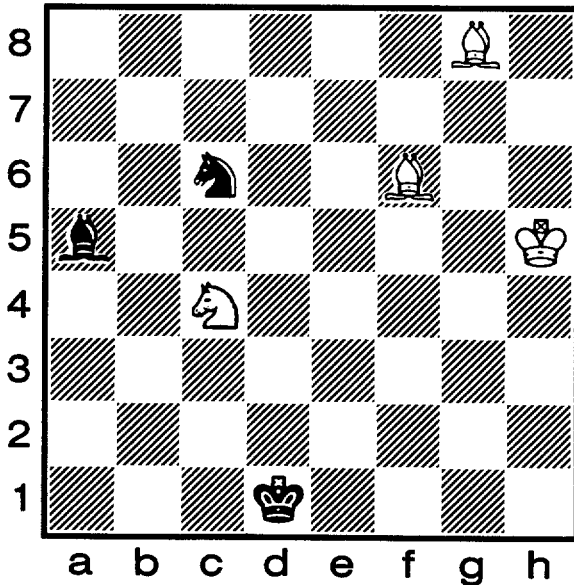
I lost track of Ron Dargis after he left Continental Can Corp. The last I remember, he was with Castle Engineering and had played for the Alumni Central team. I was saddened to hear from my teammate, Marv Cox, that Ron has passed away. I don't believe he could have been past his early fifties. I will always remember Ron as a **giant** contributor the League's success. He was a familiar sight (with his glamorous wife) at our awards banquets. He was a creative, positive thinker. He was an earnest and devoted chess player. His initiative and loyalty to the League carried it into its Golden Age.

Ron was one in a million!

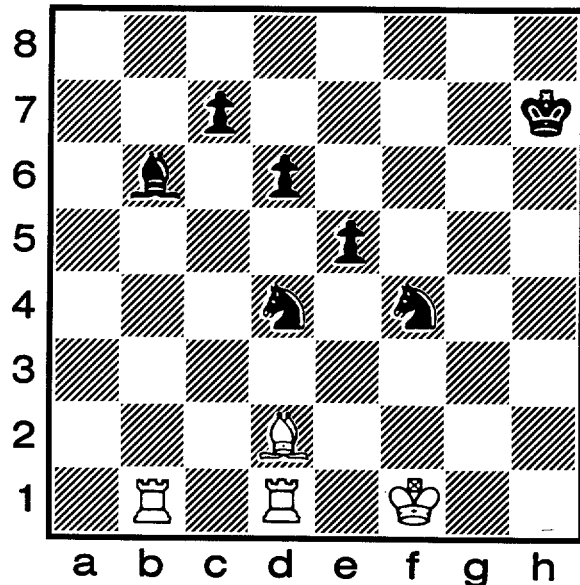
'THE 2 SQUARES COLUMN

by Marv Cox

"If two (or more) squares are attacked more times than they are defended they may fall."



diag. 14



diag. 15

As in diagram 14, one minor piece ahead with no pawns on the board is generally drawn. However, a knight on the edge of the board can be immobilized by a bishop and then captured by the other bishop.

1. N x B! Black does not dare retake because of: 2. B - d5 followed by 3. B - d8. Two bishops and king can force the black king to a corner and mate him. Can you do it? If Black does not retake with his knight then White would have three minor pieces vs. one minor piece with no pawns on the board, generally a win. Can you do this win? (Note that 1. B - d5 B-d8 only draws.)

My uncle's bon mot is "A piece is valued by the squares it controls. If it controls no squares it has no value and may be removed from the board."

In diagram 15, White has three attacks against b6, d4 and f4. The masked white rook on d1 is counted as an attacker of d4. Black has only two defenders, namely the pawns on c7 and e5. Thus we have a 3-square attack.

1. B x N e x f4 (Should black avoid this capture?)

2. R x B c x b6

3. R x N

White has won two minor pieces for a rook and has weakened black's pawns severely. My uncle always told me "Remove its guards and the square will fall." In this example the knight falls. Another case of overload.

(Corrected payment form for CICL teams dues. Corrections are highlighted).

TO: Team Captains
 FROM: Jim Brotsos, CICAL Treasurer
 SUBJECT: Statement of Charges for the 1990-91 Season

Below are the assessments to each CICAL team for the 1990-91 season. Please complete the appropriate blanks, determine your team's charges, and mail your check (payable to the Chicago Industrial Chess League). At the April 13, 1984 business meeting, it was agreed that late payments would carry penalty charges similar to bills from utility companies. Our Policies and Procedures call for teams to pay their dues by the first week of November. Payments postmarked November 30th or later will carry a \$5.00 penalty fee. Payments postmarked December 31st or later will carry a \$10.00 penalty fee. Any teams not paid up by the beginning of 1991 are subject to dismissal from the League's team tournament, and will not be allowed to participate in the following season without league consent.

Team Name: _____

The bulleting is sent to the team captain. Please specify the proper name and address below. Additional individual subscriptions are also available at \$6.00 each. Please specify any additional names and addresses as well.

| | | |
|---|-----------------|-------|
| Annual Dues per 6-Player Team | \$33.00 | _____ |
| CICAL Bulleting Subscription (one required per company) | 14.00 | _____ |
| Awards Banquet Ticket (one required per team) | 18.00 | _____ |
| Each additional Bulletin Subscription | 6.00 | _____ |
| Penalty Fee, if applicable (see above) | \$5.00 or 10.00 | _____ |
| Total Remittance | | _____ |

Send to: James Brotsos, 6563 N. Tahoma Ave., Chicago, IL 60646

Ratings Chairman's Report

Although the season is still young, two teams have already incurred two forfeits on upper boards, and have thus forfeited the right to start a clock in the absence of a player at the start of a match. These two teams are Rockwell and A&B Radio, both in the Near West Division. In future matches, if any players are not present at the end of the grace period, these two teams must shift their lineups upward to fill any empty roster slots, and take forfeits on the lower boards.

One other team has a single upper board forfeit: Alumni Central, of the East Division.

CICL RATINGS CHANGES

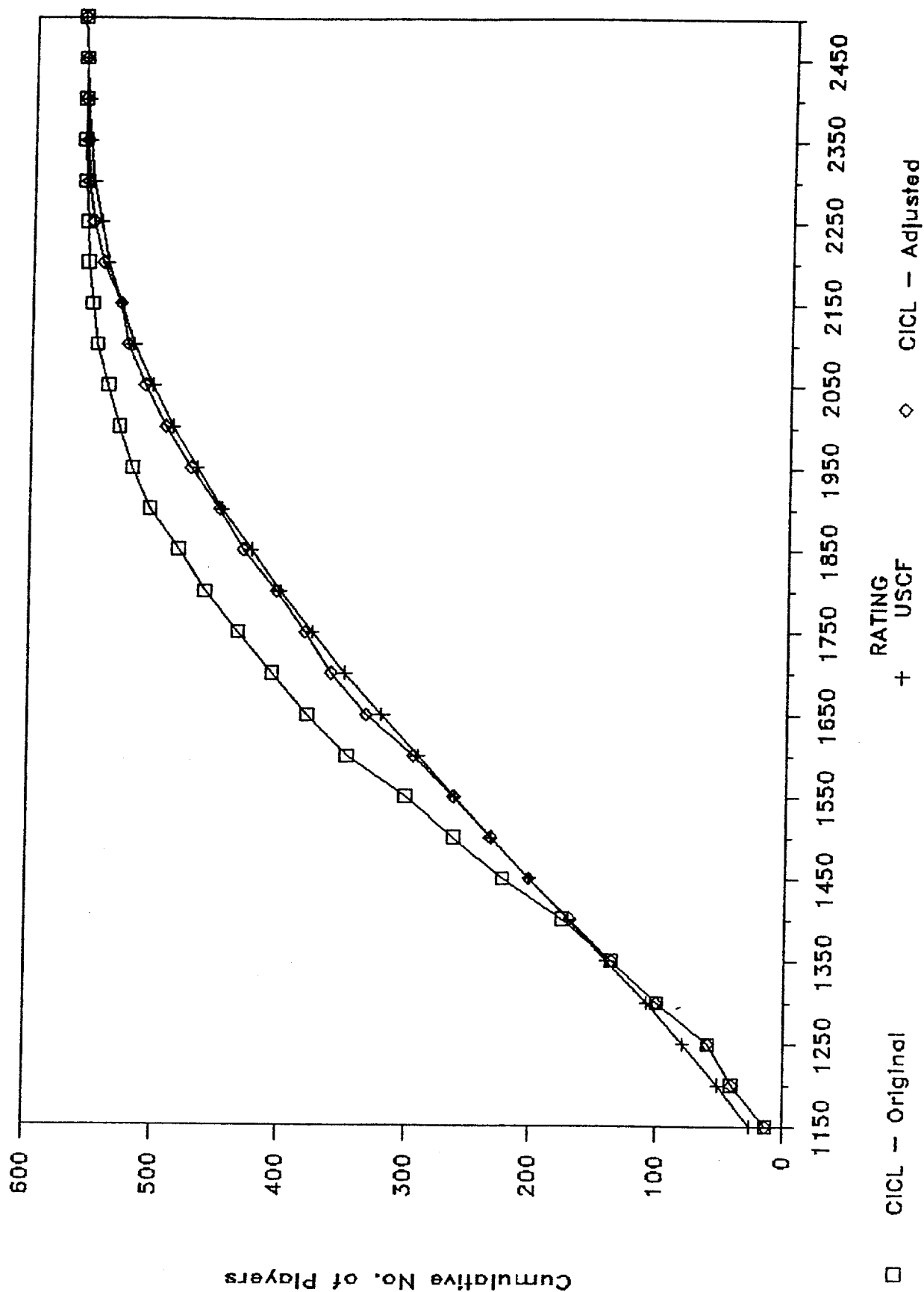
Following a discussion at the summer business meeting, the CICL ratings system was investigated, to compare it with the USCF rating system, in order to determine the effect of ignoring rating attrition in the administration of the CICL ratings. The result of this investigation has resulted in a series of upward rating changes involving CICL players rated 1350 or higher.

The distribution of CICL ratings was found to be substantially different than USCF ratings; there was a higher proportion of ratings in the interval 1350-1650, and a deficiency of ratings above 1800. (The data for the USCF rating system was obtained from an article in the October 1990 issue of Scientific American.) Although the median CICL rating was some 60 rating points lower than the median USCF rating, simply adding the 60 points to all CICL ratings would not have reconciled the differences in distribution.

The graph demonstrates this difference in shape; it presents the number of players rated at or below the values on the horizontal axis, for 562 rated CICL players. (Players entering the CICL rating system with established USCF ratings and having subsequently played less than five rated games in CICL competition have been removed from the data.) The USCF data has been normalized to the total of 562 players. The difference in shape between the two curves is clear.

After some study, a rule for adjusting the ratings of CICL players was determined that results in a distribution nearly identical to that of the USCF; the results are also shown in the graph. Ratings between 1350 and 1700 have been increased by an amount proportional to the excess above 1350, up to a 110 point increase at 1700. From 1700 up to 2000, ratings were increased at a slower rate, up to a maximum of 150 points for a rating of 2000. Above 2000, the amount of added rating points decrease as the rating increases, until at 2500 there is no change to existing ratings. This can be summarized in the following table:

CICL-USCF Ratings Comparison



| Old Rating | Increase | New Rating |
|------------|----------|------------|
| 1350 | 0 | 1350 |
| 1525 | 55 | 1580 |
| 1700 | 110 | 1810 |
| 1850 | 130 | 1980 |
| 2000 | 150 | 2150 |
| 2250 | 75 | 2325 |
| 2500 | 0 | 2500 |

Players entering the CICL with established USCF ratings had to be handled specially, as the rating changes described above were made to bring CICL ratings into correspondence with USCF ratings. Players starting in the CICL with established USCF ratings and with only a few games played in the CICL in effect already have ratings at or near the new scale. Such players currently active in USCF play and with five or fewer rated CICL games were given either their old CICL rating or their current USCF rating, whichever was higher. Those active in the USCF and with from five to nine rated CICL games were given a rating increase intermediate between this base and the amount calculated as described above. Players starting from a USCF rating but not active in the USCF for two years prior to their most recent CICL activity and with fewer than five rated CICL games were given a rating increase proportional to the number of rated CICL games; such players with five or more CICL games received the standard increase.

Rating data for currently unrated players, stored in the rating system, was also updated so that when unrated players achieve a rating it will be consistent with the new rating scale.

These ratings changes should result in equivalence between CICL and USCF ratings, with the result of past rating attrition removed from our system.

NORTH DIVISION 11/04/90

| TEAM NAME | W | L | D | GAME | MATCH | PCT |
|------------------|---|---|---|--------|--------|-------|
| | | | | POINTS | POINTS | |
| NORTHROP CORP. | 0 | 0 | 0 | 0.0 | 0.0 | 0.000 |
| UOP PROCESS DIV. | 0 | 0 | 0 | 0.0 | 0.0 | 0.000 |
| EXEMPLARS | 0 | 0 | 0 | 0.0 | 0.0 | 0.000 |
| MOTOROLA | 0 | 0 | 0 | 0.0 | 0.0 | 0.000 |
| EXCALIBURS | 0 | 0 | 0 | 0.0 | 0.0 | 0.000 |
| KEMPER INSURANCE | 0 | 0 | 0 | 0.0 | 0.0 | 0.000 |
| FEL-FRO | 0 | 0 | 0 | 0.0 | 0.0 | 0.000 |

EAST DIVISION 11/04/90

| TEAM NAME | W | L | D | GAME | MATCH | PCT |
|----------------------|---|---|---|--------|--------|-------|
| | | | | POINTS | POINTS | |
| CHICAGO POST OFFICE | 2 | 0 | 0 | 10.0 | 2.0 | 1.000 |
| ALUMNI 2ND STRINGERS | 1 | 0 | 0 | 4.0 | 1.0 | 1.000 |
| CHICAGO RES.& TRDG. | 0 | 0 | 1 | 3.0 | 0.5 | 0.500 |
| CONTINENTAL BANK | 0 | 1 | 1 | 3.0 | 0.5 | 0.250 |
| SEARS | 0 | 1 | 0 | 2.0 | 0.0 | 0.000 |
| ALUMNI CENTRAL | 0 | 1 | 0 | 2.0 | 0.0 | 0.000 |
| CHICAGO MERC. EXCH. | 0 | 0 | 0 | 0.0 | 0.0 | 0.000 |
| STANDARD OIL | 0 | 0 | 0 | 0.0 | 0.0 | 0.000 |

NEAR WEST DIVISION 11/04/90

| TEAM NAME | W | L | D | GAME | MATCH | PCT |
|-------------------|---|---|---|--------|--------|-------|
| | | | | POINTS | POINTS | |
| ARGONNE KNIGHTS | 2 | 0 | 0 | 10.5 | 2.0 | 1.000 |
| BELL LABS DRAGONS | 2 | 0 | 0 | 8.5 | 2.0 | 1.000 |
| BELL LABS ROYALS | 1 | 1 | 0 | 7.5 | 1.0 | 0.500 |
| ROCKWELL INT'L | 1 | 2 | 0 | 7.0 | 1.0 | 0.333 |
| A & B RADIO | 1 | 1 | 0 | 4.0 | 1.0 | 0.500 |
| J. I. CASE | 0 | 1 | 0 | 2.5 | 0.0 | 0.000 |
| AT&T CHARGERS | 0 | 2 | 0 | 2.0 | 0.0 | 0.000 |

FAR WEST DIVISION 11/04/90

| TEAM NAME | W | L | D | GAME | MATCH | PCT |
|---------------------|---|---|---|--------|--------|-------|
| | | | | POINTS | POINTS | |
| AT&T TYROS | 0 | 0 | 0 | 0.0 | 0.0 | 0.000 |
| FERMILAB | 0 | 0 | 0 | 0.0 | 0.0 | 0.000 |
| WHEATON COLLEGE | 0 | 0 | 0 | 0.0 | 0.0 | 0.000 |
| BELL LABS INDIANS | 0 | 0 | 0 | 0.0 | 0.0 | 0.000 |
| ARGONNE ROOKS | 0 | 0 | 0 | 0.0 | 0.0 | 0.000 |
| AMOCO RESEARCH LABS | 0 | 0 | 0 | 0.0 | 0.0 | 0.000 |

| NAME | TEAM | W | L | D | RATING | NAME | TEAM | W | L | D | RATING |
|---------------|-------|---|---|---|--------|----------------|-------|---|---|---|--------|
| ALEMAN, M | AMOCO | 0 | 0 | 0 | 0000? | CIBA, F | SEARS | 0 | 0 | 1 | 1406 |
| ANDERSON, C J | ROYLS | 0 | 1 | 0 | 1193# | CIESLEK, D | MTRLA | 0 | 0 | 0 | 2036* |
| ANDERSON, N | EXCAL | 0 | 0 | 0 | 1782C | CLARE, B | ROOKS | 0 | 0 | 0 | 2185 |
| ANGLIN, B | SEARS | 0 | 0 | 1 | 1684* | CLEMONS, V | AMCRP | 0 | 0 | 0 | 0000? |
| ANSARI, N | WALGR | 0 | 0 | 0 | 1650 | COOPER, J | AMCRP | 0 | 0 | 0 | 0000? |
| ATKINSON, J | AMCRP | 0 | 0 | 0 | 1897 | COOPER, W | PSTOF | 2 | 0 | 0 | 1735 |
| AUGSBURGER, L | WHEAT | 0 | 0 | 0 | 1767 | COX, M | ALUMN | 0 | 1 | 0 | 2000C |
| BAKER, B | FLPRO | 0 | 0 | 0 | 1017 | CREWSE, L | EXMPL | 0 | 0 | 0 | 2098 |
| BAURAC, D | KNGHT | 2 | 0 | 0 | 1736C | CROWE, R | ROYLS | 1 | 1 | 0 | 1348# |
| BAYUS, T | MTRLA | 0 | 0 | 0 | 0000? | CRUZ, R | FLPRO | 0 | 0 | 0 | 1418* |
| BEARD, G | SECST | 0 | 0 | 0 | 1807* | CUMMUTA, P | KEMPR | 0 | 0 | 0 | 1273 |
| BECKLEY, S | DRGNS | 1 | 1 | 0 | 1294* | CZERNIECKI, A | ALUMN | 1 | 0 | 0 | 2294C |
| BENEDEK, R | KNGHT | 1 | 0 | 0 | 2219C | DANELIUK, T | SECST | 0 | 0 | 0 | 0000? |
| BERNARD, D | CRT | 1 | 0 | 0 | 1107# | DANES, D | ROOKS | 0 | 0 | 0 | 0000? |
| BERRY, G | ROOKS | 0 | 0 | 0 | 2096D | DAVIDSON, M | SECST | 0 | 0 | 0 | 1616# |
| BINGLE, J | ROOKS | 0 | 0 | 0 | 1481C | DAWSON, J | KNGHT | 0 | 1 | 0 | 1421 |
| BLACKMON, E | INDNS | 0 | 0 | 0 | 1689 | DECMAN, S | ROOKS | 0 | 0 | 0 | 1846C |
| BLAZIE, J | TYROS | 0 | 0 | 0 | 1782 | DENG, J | CRT | 1 | 0 | 0 | 0000? |
| BLOEDOW, P | KEMPR | 0 | 0 | 0 | 1485C | DEWITT, G | ROCKW | 1 | 1 | 0 | 1378 |
| BLOOM, B | MTRLA | 0 | 0 | 0 | 2122 | DOBR, K | CHGR | 1 | 1 | 0 | 1527D |
| BOHMBACH, J | CRT | 0 | 0 | 0 | 1447* | DOBROVOLNY, C | ROYLS | 0 | 0 | 2 | 1883* |
| BOLDINGH, E | UOP | 0 | 0 | 0 | 2038# | DORRIES, T | FERMI | 0 | 0 | 0 | 1893* |
| BOLLIG, W | NORTH | 0 | 0 | 0 | 0000? | DURKEE, D | DRGNS | 1 | 1 | 0 | 1745C |
| BOOKER, G | RADIO | 0 | 0 | 1 | 0000? | DYCKOWSKI, R | CONBK | 1 | 1 | 0 | 0000? |
| BORUM, J | DRGNS | 0 | 0 | 0 | 2006 | EASTER, R | MTRLA | 0 | 0 | 0 | 2157 |
| BRADY, R | CHGR | 1 | 1 | 0 | 1399# | EDWARDS, S | EXMPL | 0 | 0 | 0 | 1254 |
| BRANDT, W | DRGNS | 0 | 0 | 0 | 1402* | EFRON, D | ROCKW | 2 | 0 | 0 | 1587 |
| BRIONES, M | UOP | 0 | 0 | 0 | 1662C | ELEK, G | NORTH | 0 | 0 | 0 | 0000? |
| BROCKETT, M | SECST | 0 | 0 | 0 | 1831 | ELLERY, G | RADIO | 1 | 0 | 0 | 1475# |
| BRONFELD, A | ALUMN | 0 | 1 | 0 | 1854 | EUSTACE, D | INDNS | 0 | 0 | 0 | 1296* |
| BROSKA, P | MERC | 0 | 0 | 0 | 1423# | FABIJONAS, R | ALUMN | 0 | 0 | 0 | 1798D |
| BROTSOS, J | EXCAL | 0 | 0 | 0 | 1602D | FAHRENHOLTZ, S | MTRLA | 0 | 0 | 0 | 1739# |
| BROZOVICH, J | TYROS | 0 | 0 | 0 | 1781C | FELDMAN, A | FLPRO | 0 | 0 | 0 | 1389 |
| BUCHNER, R | INDNS | 0 | 0 | 0 | 1991 | FELICIANO, H | PSTOF | 0 | 0 | 0 | 0000? |
| BUERGER, E | EXCAL | 0 | 0 | 0 | 2063D | FIPPINGER, P | WHEAT | 0 | 0 | 0 | 0000? |
| BURBA, K | ROOKS | 0 | 0 | 0 | 1414C | FISCHLER, M | FERMI | 0 | 0 | 0 | 1337 |
| BURIAN, D | NORTH | 0 | 0 | 0 | 1643 | FRAATS, D | CONBK | 0 | 1 | 0 | 1889 |
| CAGNEY, D | KEMPR | 0 | 0 | 0 | 0000? | FRANEK, M | SECST | 0 | 0 | 1 | 1833 |
| CAMPBELL, C | AMCRP | 0 | 0 | 0 | 1192 | FRANTZIS, G | MERC | 0 | 0 | 0 | 0000? |
| CAMPBELL, D | AMOCO | 0 | 0 | 0 | 0000? | FREY, M | FERMI | 0 | 0 | 0 | 0000? |
| CARTER, D | JCASE | 0 | 0 | 1 | 1084* | FRIDRICH, C | MTRLA | 0 | 0 | 0 | 1427# |
| CARTER, L | PSTOF | 1 | 0 | 0 | 1522* | FRIESEMA, W | CRT | 0 | 0 | 0 | 2004* |
| CHACHERE, L | INDNS | 0 | 0 | 0 | 2362 | FRISKE, T | WALGR | 0 | 0 | 0 | 1955 |
| CHAN, H | SEARS | 0 | 0 | 1 | 1653 | GAINES, I | FERMI | 0 | 0 | 0 | 1724C |
| CHARKOVSKY, R | SECST | 1 | 0 | 0 | 1744# | GAMEZ, M | JCASE | 1 | 0 | 0 | 0000? |
| CHESBROUGH, C | CRT | 0 | 0 | 0 | 0000? | GARLAND, G | KEMPR | 0 | 0 | 0 | 1694 |
| CHEVERESAN, S | UOP | 0 | 0 | 0 | 1346 | GAVIN, L | MERC | 0 | 0 | 0 | 1240* |
| CHIU, H | KNGHT | 1 | 0 | 0 | 1579* | GOLUMBOVSKI, P | NORTH | 0 | 0 | 0 | 2042# |
| CHRISTIAN, R | DRGNS | 2 | 0 | 0 | 1935C | GONCHAROFF, N | MTRLA | 0 | 0 | 0 | 1778D |
| CHURCHILL, W | INDNS | 0 | 0 | 0 | 1762 | GREEN, D | ROOKS | 0 | 0 | 0 | 1821C |

? - UNRATED

- 5 TO 9 RATED GAMES

* - 10 TO 24 RATED GAMES

C - CENTURY CLUB MEMBER

D - DOUBLE CENTURION

| NAME | TEAM | W | L | D | RATING | NAME | TEAM | W | L | D | RATING |
|----------------|-------|---|---|---|--------|---------------|-------|---|---|---|--------|
| GREGORY, J | PSTOF | 1 | 1 | 0 | 2207 | LATIMER, E | SEARS | 0 | 1 | 0 | 2040D |
| GROTANS, G | MERC | 0 | 0 | 0 | 0000? | LEE, A | CRT | 0 | 0 | 0 | 0000? |
| GRYPARIS, J | MTRLA | 0 | 0 | 0 | 1371 | LEE, R | TYROS | 0 | 0 | 0 | 0000? |
| GUILLEN, B | KEMPR | 0 | 0 | 0 | 0000? | LEONG, D | SECST | 0 | 0 | 0 | 1945* |
| GUIDO, J | ROYLS | 0 | 0 | 1 | 2188 | LEONG, G | EXCAL | 0 | 0 | 0 | 2072C |
| HAHNE, D | ROYLS | 0 | 1 | 0 | 1567 | LESTER, MM | MTRLA | 0 | 0 | 0 | 0000? |
| HAMMOND, M | CONBK | 0 | 1 | 0 | 1264* | LEVINE, D | KNGHT | 1 | 0 | 1 | 2346 |
| HARRINGER, R | TYROS | 0 | 0 | 0 | 1619C | LITVINAS, A | ALUMN | 1 | 0 | 0 | 1828C |
| HERSHEY, S | MTRLA | 0 | 0 | 0 | 0000? | LLOYD, K | PSTOF | 0 | 0 | 0 | 0000? |
| HERZOG, W | NORTH | 0 | 0 | 0 | 0000? | LOSOFF, A | CRT | 1 | 0 | 0 | 2003 |
| HESS, B | FLPRO | 0 | 0 | 0 | 1528 | LUDWIG, T | INDNS | 0 | 0 | 0 | 2167 |
| HICKS, C | ROYLS | 1 | 0 | 0 | 1371 | MARCOWKA, R | PSTOF | 2 | 0 | 0 | 2025C |
| HILL, R | KNGHT | 2 | 0 | 0 | 1624 | MATHEWS, B | CRT | 0 | 0 | 0 | 0000? |
| HILTON, J | MERC | 0 | 0 | 0 | 0000? | MATHUR, P | ROYLS | 0 | 0 | 0 | 1316# |
| HODINA, J | AMCRP | 0 | 0 | 0 | 2012 | MCGRIFF, M | RADIO | 0 | 0 | 0 | 1466* |
| HOLM, B | AMOCO | 0 | 0 | 0 | 1740 | MCINTOSH, S | CONBK | 0 | 1 | 0 | 0000? |
| HORNER, L | CRT | 0 | 0 | 0 | 0000? | MCQUINN, J | ROCKW | 1 | 1 | 1 | 1568 |
| HOWARD, W | PSTOF | 0 | 0 | 0 | 1101# | MERTENS, P | NORTH | 0 | 0 | 0 | 0000? |
| HUGHES, N | KEMPR | 0 | 0 | 0 | 1833C | MICKLICH, F | UOP | 0 | 0 | 0 | 1771C |
| HUMPF, R | RADIO | 0 | 0 | 0 | 1297* | MIKULECKY, B | RADIO | 0 | 2 | 0 | 1357 |
| HUTTAR, C | SECST | 0 | 0 | 1 | 2016 | MILLER, J | NORTH | 0 | 0 | 0 | 0000? |
| ILANGA, R | FLPRO | 0 | 0 | 0 | 2023* | MILLER, TT | SEARS | 0 | 1 | 0 | 0000? |
| INUMERABLE, F | PSTOF | 1 | 0 | 0 | 2196 | MITCHAM, L | ROCKW | 0 | 0 | 1 | 0000? |
| ISAAC, G | CRT | 0 | 0 | 0 | 0000? | MOLES, J | MTRLA | 0 | 0 | 0 | 0000? |
| ISAAC, T | PSTOF | 0 | 0 | 0 | 1667 | MOODY, L | CONBK | 0 | 2 | 0 | 0000? |
| JACOBS, N | DRGNS | 1 | 0 | 0 | 1944C | MOTYCKA, R | JCASE | 0 | 0 | 0 | 1260 |
| JAKSTAS, K | NORTH | 0 | 0 | 0 | 2189 | MUNOZ, A | INDNS | 0 | 0 | 0 | 1247 |
| JASAITIS, A | CRT | 1 | 0 | 0 | 2155 | NWABUDE, D | ROYLS | 0 | 0 | 0 | 0000? |
| JONES, B | ROCKW | 0 | 0 | 2 | 2137 | O'DELL, DW | RADIO | 0 | 1 | 1 | 1629 |
| KALE, S | JCASE | 0 | 1 | 0 | 1418# | DELHAFEN, A | EXMPL | 0 | 0 | 0 | 1342* |
| KALIHIER, C | FERMI | 0 | 0 | 0 | 1913 | OGASAWARA, L | INDNS | 0 | 0 | 0 | 1829 |
| KANAS, W | JCASE | 0 | 1 | 0 | 1262 | OGASAWARA, R | MTRLA | 0 | 0 | 0 | 1604D |
| KARGE, W | KEMPR | 0 | 0 | 0 | 1269 | OLUND, F | MTRLA | 0 | 0 | 0 | 1346# |
| KARLOVICS, S | EXCAL | 0 | 0 | 0 | 1820C | ORCUT, J | CRT | 0 | 0 | 0 | 0000? |
| KELLOGG, K | KNGHT | 2 | 0 | 0 | 1700C | OSTERLUND, R | EXCAL | 0 | 0 | 0 | 1897 |
| KELLY, S | ROYLS | 0 | 0 | 0 | 1339* | PAKASKI, A | KEMPR | 0 | 0 | 0 | 0000? |
| KLEIN, P | NORTH | 0 | 0 | 0 | 0000? | PARA, A | FERMI | 0 | 0 | 0 | 0000? |
| KLINEFELTER, H | JCASE | 1 | 0 | 0 | 1461 | PARADAN, E | CONBK | 0 | 1 | 0 | 1801 |
| KNUTSON, G | KEMPR | 0 | 0 | 0 | 0000? | PATEL, R | CONBK | 0 | 0 | 0 | 1490# |
| KOEPELE, J | TYROS | 0 | 0 | 0 | 0000? | PAWLUS, D | MTRLA | 0 | 0 | 0 | 0000? |
| KOZLOVSKY, M | FERMI | 0 | 0 | 0 | 2274* | PEEL, M | WALGR | 0 | 0 | 0 | 1902 |
| KRAKAU, H | EXMPL | 0 | 0 | 0 | 1947 | PEIJFFERS, S | INDNS | 0 | 0 | 0 | 1990 |
| KRAS, T | ALUMN | 0 | 0 | 0 | 2262 | PETERS, P | FLPRO | 0 | 0 | 0 | 1131* |
| KUEHLHORN, B | MTRLA | 0 | 0 | 0 | 0000? | PETWAY, L | PSTOF | 1 | 1 | 0 | 1533* |
| KUKES, S | AMOCO | 0 | 0 | 0 | 0000? | PULTS, J | AMOCO | 0 | 0 | 0 | 1825# |
| KUMRO, D | CHRG | 0 | 2 | 0 | 1732D | PYLES, C | WHEAT | 0 | 0 | 0 | 1285# |
| LANNOYE, D | WALGR | 0 | 0 | 0 | 1698* | RADAVICIUS, E | CHRG | 0 | 2 | 0 | 1683C |
| LASKY, J | RADIO | 1 | 0 | 0 | 1424 | RADEMACHER, H | MTRLA | 0 | 0 | 0 | 0000? |
| LASKY, JIM | RADIO | 0 | 0 | 0 | 1712# | RAFACZ, T | ROCKW | 1 | 2 | 0 | 1633 |
| LASKY, N | RADIO | 1 | 1 | 0 | 1483 | RAFACZ, W | ROCKW | 0 | 3 | 0 | 1664* |

? - UNRATED

- 5 TO 9 RATED GAMES

* - 10 TO 24 RATED GAMES

C - CENTURY CLUB MEMBER

D - DOUBLE CENTURION

| NAME | TEAM | W | L | D | RATING | NAME | TEAM | W | L | D | RATING |
|-----------------|-------|---|---|---|--------|-----------------|-------|---|---|---|--------|
| RAVANAM, S | JCASE | 0 | 0 | 0 | 1219* | SUERTH, F | EXMPL | 0 | 0 | 0 | 1649 |
| REDEY, E | KNGHT | 0 | 0 | 0 | 1025* | SULLIVAN, J | EXCAL | 0 | 0 | 0 | 1994C |
| REED, L | PSTOF | 0 | 0 | 0 | 1735# | SVOBODA, D | MTRLA | 0 | 0 | 0 | 0000? |
| REID, C | JCASE | 0 | 0 | 0 | 1252* | SWIDERSKI, M | CHRG | 0 | 1 | 0 | 1346C |
| REID, D | MERC | 0 | 0 | 0 | 0000? | TASKER, I | ROOKS | 0 | 0 | 0 | 1453* |
| RENNER, T | AMOCO | 0 | 0 | 0 | 1631 | TATARSKY, J | KEMPR | 0 | 0 | 0 | 0000? |
| REVULURI, K | ROYLS | 0 | 0 | 0 | 0000? | TAYLOR, F | WHEAT | 0 | 0 | 0 | 0000? |
| RIEDERER, D | CRT | 0 | 1 | 0 | 0000? | TEGEL, F | DRGNS | 1 | 0 | 0 | 2191D |
| RINGENBERG, T | AMOCO | 0 | 0 | 0 | 1364* | THOMAS, G | TYROS | 0 | 0 | 0 | 1396 |
| RO, D | CRT | 0 | 1 | 0 | 1535* | THOMAS, J | CHRG | 0 | 2 | 0 | 1533C |
| ROGERS, N | PSTOF | 1 | 0 | 0 | 1997* | THOMPSON, M | AMOCO | 0 | 0 | 0 | 1390* |
| ROSE, J | FERMI | 0 | 0 | 0 | 1972 | THOMPSON, R | FLPRO | 0 | 0 | 0 | 1048 |
| ROSE, K | AMOCO | 0 | 0 | 0 | 1927 | TOGAMI, P | JCASE | 0 | 0 | 0 | 1173* |
| ROSLING, G | WALGR | 0 | 0 | 0 | 1505* | TOMCHEK, W | MTRLA | 0 | 0 | 0 | 0000? |
| ROSLEY, D | ROYLS | 2 | 0 | 0 | 1862 | TRAN, D | MTRLA | 0 | 0 | 0 | 0000? |
| RUDY, J | MERC | 0 | 0 | 0 | 1246* | TRIPURANENI, D | ROCKW | 0 | 0 | 0 | 0000? |
| RZESZUTKO, R | SECST | 0 | 0 | 1 | 1940 | TRISCHUK, J | FERMI | 0 | 0 | 0 | 0000? |
| SAGALOVSKY, L | ROOKS | 0 | 0 | 0 | 1911 | TUSSING, D | KNGHT | 0 | 0 | 0 | 0000? |
| SAJBEL, P | UOP | 0 | 0 | 0 | 1622 | UNDERWOOD, W | WHEAT | 0 | 0 | 0 | 1967C |
| SAJKOWSKI, D | AMOCO | 0 | 0 | 0 | 1921 | VAN MEER, J | KEMPR | 0 | 0 | 0 | 1867 |
| SAMELSON, C | ROCKW | 0 | 0 | 0 | 2094C | VAN ZILE, C | UOP | 0 | 0 | 0 | 0000? |
| SATCHELL, E | WHEAT | 0 | 0 | 0 | 1491# | VELAYUTHAM, S | TYROS | 0 | 0 | 0 | 1331# |
| SATTERLEE, D | JCASE | 1 | 0 | 0 | 1585 | VIGANTS, A | NORTH | 0 | 0 | 0 | 0000? |
| SCHULMAN, R | EXMPL | 0 | 0 | 0 | 1908C | VOLOSHIN, G | WALGR | 0 | 0 | 0 | 1636# |
| SCHUTE, E | MERC | 0 | 0 | 0 | 0000? | WALHOUT, P | WHEAT | 0 | 0 | 0 | 2175 |
| SCHWARTZ, M | TYROS | 0 | 0 | 0 | 0000? | WALKER, R | FERMI | 0 | 0 | 0 | 1376C |
| SCHWARTZ, S | SEARS | 0 | 0 | 1 | 1734C | WALSH, W | ROOKS | 0 | 0 | 0 | 1503C |
| SECHLER, M | WHEAT | 0 | 0 | 0 | 0000? | WARD, C | DRGNS | 0 | 1 | 1 | 1600D |
| SHACHTER, J | INDNS | 0 | 0 | 0 | 1569 | WEARY, M | MTRLA | 0 | 0 | 0 | 0000? |
| SHAFF, R | TYROS | 0 | 0 | 0 | 1539C | WEILAND, S | WALGR | 0 | 0 | 0 | 1112# |
| SHEU, G | INDNS | 0 | 0 | 0 | 1272* | WEISNER, T | RADIO | 0 | 2 | 0 | 1146. |
| SIEGEL, R | CONBK | 1 | 1 | 0 | 1506 | WEITZ, R | FLPRO | 0 | 0 | 0 | 1840C |
| SIMS, B | CRT | 0 | 1 | 0 | 0000? | WENTLING, C | AMCRP | 0 | 0 | 0 | 1528 |
| SIWEK, M | KEMPR | 0 | 0 | 0 | 2113 | WHITE, H | JCASE | 0 | 1 | 0 | 1727 |
| SLUSSER, C | CRT | 0 | 0 | 0 | 0000? | WHITSITT, S | DRGNS | 1 | 0 | 0 | 1612* |
| SMILEY, R | AMCRP | 0 | 0 | 0 | 1930 | WIENCEK, T | KNGHT | 0 | 0 | 0 | 1239* |
| SMITH, JM | SECST | 0 | 0 | 1 | 1245* | WIENS, P | WHEAT | 0 | 0 | 0 | 1380 |
| SNELLING, C | PSTOF | 0 | 0 | 0 | 0000? | WILLIAMS, B | WALGR | 0 | 0 | 0 | 0000? |
| SOMASUNDARAM, S | TYROS | 0 | 0 | 0 | 0000? | WINSTON, H | SECST | 1 | 0 | 0 | 2000 |
| SOMBONG, M | CONBK | 0 | 2 | 0 | 1775 | WIRTSCHAFTER, D | ALUMN | 0 | 0 | 0 | 2064 |
| SOPRYCH, T | AMCRP | 0 | 0 | 0 | 1640 | WONG, P | EXMPL | 0 | 0 | 0 | 2243C |
| SPIEGEL, L | FERMI | 0 | 0 | 0 | 2117 | WYNARD, D | WHEAT | 0 | 0 | 0 | 0000? |
| SPLIT, B | MERC | 0 | 0 | 0 | 0000? | WYNN, R | FLPRO | 0 | 0 | 0 | 0000? |
| STAMM, V | CHRG | 0 | 1 | 0 | 1691D | YOUNG, C | KNGHT | 0 | 0 | 0 | 1952C |
| STEMPINSKI, P | NORTH | 0 | 0 | 0 | 1528 | ZAROMB, S | ROOKS | 0 | 0 | 0 | 1488 |
| STEVANOVIC, M | UOP | 0 | 0 | 0 | 2245C | ZEIDEL, J | MERC | 0 | 0 | 0 | 1987 |
| STINSON, M | INDNS | 0 | 0 | 0 | 1998 | ZHANG, L | AMOCO | 0 | 0 | 0 | 0000? |
| STUHLBARG, D | UOP | 0 | 0 | 0 | 1535C | ZOELLNER, J | CONBK | 1 | 1 | 0 | 1157 |

? - UNRATED
- 5 TO 9 RATED GAMES
* - 10 TO 24 RATED GAMES

C - CENTURY CLUB MEMBER
D - DOUBLE CENTURION

| 24-OCT-90 BELL LABS DRAGONS | | | | 3.5 | ROCKWELL INT'L | | | | 2.5 |
|-----------------------------|--------------|------|-----|---------|----------------|------|----|----|-----|
| ROUND 3 BD | | | | RATINGS | SCORE | | | | |
| 1 | TEGEL, F | 2191 | 0 | 1F | MITCHAM, L | 0 | 0 | OF | |
| 2 | CHRISTIAN, R | 1927 | 8 | 1 | RAFACZ, W | 1672 | -8 | 0 | |
| 3 | JACOBS, N | 1939 | 5 | 1 | RAFACZ, T | 1640 | -7 | 0 | |
| 4 | DURKEE, D | 1780 | -35 | 0 | EFRON, D | 1552 | 35 | 1 | |
| 5 | WARD, C | 1602 | -2 | .5 | MCQUINN, J | 1565 | 3 | .5 | |
| 6 | BECKLEY, S | 1314 | -20 | 0 | DEWITT, G | 1358 | 20 | 1 | |

| 02-OCT-90 CHICAGO POST OFFICE | | | | 4 | ALUMNI CENTRAL | | | | 2 |
|-------------------------------|---------------|------|-----|---------|-----------------|------|-----|----|---|
| ROUND 1 BD | | | | RATINGS | SCORE | | | | |
| 1 | GREGORY, J | 2226 | -19 | 0 | CZERNIECKI, A | 2281 | 13 | 1 | |
| 2 | INUMERABLE, F | 2189 | 0 | 1F | WIRTSCHAFTER, D | 2064 | 0 | OF | |
| 3 | MARCOWKA, R | 2002 | 16 | 1 | COX, M | 2024 | -24 | 0 | |
| 4 | COOPER, W | 1699 | 34 | 1 | BRONFELD, A | 1888 | -34 | 0 | |
| 5 | PETWAY, L | 1540 | -7 | 0 | LITVINAS, A | 1821 | 7 | 1 | |
| 6 | HOWARD, W | 1101 | 0 | 1F | BROTSOS, J | 1602 | 0 | OF | |

| 02-OCT-90 CONTINENTAL BANK | | | | 3 | CHICAGO RES. & TRDG. | | | | 3 |
|----------------------------|---------------|------|----|---------|----------------------|------|-----|---|---|
| ROUND 1 BD | | | | RATINGS | SCORE | | | | |
| 1 | SOMBONG, M | 1791 | -5 | 0 | JASAITIS, A | 2150 | 5 | 1 | |
| 2 | MOODY, L | 0 | 0 | 0 | LOSOFF, A | 2003 | 0 | 1 | |
| 3 | SIEGEL, R | 1505 | 26 | 1 | RO, D | 1561 | -26 | 0 | |
| 4 | DYCZKOWSKI, R | 0 | 0 | 1 | SIMS, B | 0 | 0 | 0 | |
| 5 | ZOELLNER, J | 1159 | 0 | 1 | RIEDERER, D | 0 | 0 | 0 | |
| 6 | MCINTOSH, S | 0 | 0 | 0 | BERNARD, D | 1107 | 0 | 1 | |
| 7 | HAMMOND, M | 1264 | 0 | 0 | DENG, J | 0 | 0 | 1 | |

| 17-OCT-90 CONTINENTAL BANK | | | | 0 | CHICAGO POST OFFICE | | | | 6 |
|----------------------------|---------------|------|-----|---------|---------------------|------|----|---|---|
| ROUND 2 BD | | | | RATINGS | SCORE | | | | |
| 1 | FRAATS, D | 1896 | -7 | 0 | INUMERABLE, F | 2189 | 7 | 1 | |
| 2 | DYCZKOWSKI, R | 0 | 0 | 0 | GREGORY, J | 2207 | 0 | 1 | |
| 3 | PARAOAN, E | 1811 | -10 | 0 | MARCOWKA, R | 2018 | 7 | 1 | |
| 4 | SOMBONG, M | 1786 | -11 | 0 | ROGERS, N | 1986 | 11 | 1 | |
| 5 | SIEGEL, R | 1531 | -25 | 0 | CARTER, L | 1497 | 25 | 1 | |
| 6 | MOODY, L | 0 | 0 | 0 | PETWAY, L | 1533 | 0 | 1 | |
| 7 | ZOELLNER, J | 1159 | -2 | 0 | COOPER, W | 1733 | 2 | 1 | |

| 23-OCT-90 SEARS | | | | 2 | ALUMNI 2ND STRINGERS | | | | 4 |
|-----------------|-------------|------|-----|---------|----------------------|------|-----|----|---|
| ROUND 1 BD | | | | RATINGS | SCORE | | | | |
| 1 | LATIMER, E | 2059 | -19 | 0 | WINSTON, H | 1972 | 28 | 1 | |
| 2 | ANGLIN, B | 1668 | 16 | .5 | RZESZUTKO, R | 1956 | -16 | .5 | |
| 3 | SCHWARTZ, S | 1723 | 11 | .5 | HUTTAR, C | 2033 | -17 | .5 | |
| 4 | CHAN, H | 1641 | 12 | .5 | FRANEK, M | 1845 | -12 | .5 | |
| 5 | MILLER, TT | 0 | 0 | 0 | CHARKOVSKY, R | 1744 | 0 | 1 | |
| 6 | CIBA, F | 1417 | -11 | .5 | SMITH, JM | 1234 | 11 | .5 | |

19-SEP-90 ARGONNE KNIGHTS

5.5 ROCKWELL INT'L

ROUND 1 BD

| | RATINGS | SCORE | | RATINGS | SCORE |
|--------------|---------|-------|------------|---------|-------|
| 1 LEVINE, D | 2359-14 | .5 | JONES, B | 2119 14 | .5 |
| 2 BENEDEK, R | 2218 0 | 1F | MITCHAM, L | 0 0 | OF |
| 3 BAURAC, D | 1714 15 | 1 | RAFACZ, W | 1706-22 | 0 |
| 4 KELLOGG, K | 1678 13 | 1 | RAFACZ, T | 1640-20 | 0 |
| 5 HILL, R | 1594 22 | 1 | MCQUINN, J | 1582-22 | 0 |
| 6 CHIU, H | 1568 11 | 1 | DEWITT, G | 1369-11 | 0 |

24-SEP-90 BELL LABS DRAGONS

5 AT&T CHARGERS

ROUND 1 BD

| | RATINGS | SCORE | | RATINGS | SCORE |
|----------------|---------|-------|---------------|---------|-------|
| 1 TEGEL, F | 2189 2 | 1 | KUMRO, D | 1735 -2 | 0 |
| 2 CHRISTIAN, R | 1917 10 | 1 | STAMM, V | 1698 -7 | 0 |
| 3 DURKEE, D | 1762 18 | 1 | RADAVICIUS, E | 1696-12 | 0 |
| 4 WARD, C | 1622-20 | 0 | DOBR, K | 1514 20 | 1 |
| 5 WHITSITT, S | 1591 21 | 1 | THOMAS, J | 1568-21 | 0 |
| 6 BECKLEY, S | 1284 30 | 1 | BRADY, R | 1402-30 | 0 |

26-SEP-90 A & B RADIO

.5 BELL LABS ROYALS

ROUND 1 BD

| | RATINGS | SCORE | | RATINGS | SCORE |
|----------------|---------|-------|---------------|---------|-------|
| 1 LASKY, J | 1385 0 | OF | GUID, J | 2192 0 | 1F |
| 2 O'DELL, DW | 1643 15 | .5 | DOBROVOLNY, C | 1898-15 | .5 |
| 3 MIKULECKY, B | 1378 -3 | 0 | ROSLEY, D | 1847 3 | 1 |
| 4 MCGRUFF, M | 1466 0 | OF | HAHNE, D | 1587 0 | 1F |
| 5 LASKY, N | 1506-33 | 0 | CROWE, R | 1327 33 | 1 |
| 6 WEISNER, T | 1157-11 | 0 | HICKS, C | 1360 11 | 1 |

10-OCT-90 ROCKWELL INT'L

4 BELL LABS ROYALS

ROUND 2 BD

| | RATINGS | SCORE | | RATINGS | SCORE |
|--------------|---------|-------|---------------|---------|-------|
| 1 JONES, B | 2133 4 | .5 | GUID, J | 2192 -4 | .5 |
| 2 MITCHAM, L | 0 0 | .5 | DOBROVOLNY, C | 1883 0 | .5 |
| 3 RAFACZ, W | 1684-12 | 0 | ROSLEY, D | 1850 12 | 1 |
| 4 RAFACZ, T | 1620 20 | 1 | HAHNE, D | 1587-20 | 0 |
| 5 EFRON, D | 1540 12 | 1 | CROWE, R | 1360-12 | 0 |
| 6 MCQUINN, J | 1560 5 | 1 | ANDERSON, CJ | 1198 -5 | 0 |

11-OCT-90 AT&T CHARGERS

1 ARGONNE KNIGHTS

ROUND 2 BD

| | RATINGS | SCORE | | RATINGS | SCORE |
|-----------------|---------|-------|------------|---------|-------|
| 1 KUMRO, D | 1733 -1 | 0 | LEVINE, D | 2345 1 | 1 |
| 2 RADAVICIUS, E | 1684 -1 | 0 | BENEDEK, R | 2218 1 | 1 |
| 3 DOBR, K | 1534 -7 | 0 | BAURAC, D | 1729 7 | 1 |
| 4 THOMAS, J | 1547-14 | 0 | KELLOGG, K | 1691 9 | 1 |
| 5 SWIDERSKI, M | 1351 -5 | 0 | HILL, R | 1616 8 | 1 |
| 6 BRADY, R | 1372 27 | 1 | DAWSON, J | 1448-27 | 0 |

17-OCT-90 A & B RADIO

3.5 J. I. CASE

ROUND 2 BD

| | RATINGS | SCORE | | RATINGS | SCORE |
|----------------|---------|-------|----------------|---------|-------|
| 1 LASKY, J | 1385 39 | 1 | WHITE, H | 1727-39 | 0 |
| 2 O'DELL, DW | 1658-29 | 0 | SATTERLEE, D | 1556 29 | 1 |
| 3 MIKULECKY, B | 1375-18 | 0 | KLINEFELTER, H | 1443 18 | 1 |
| 4 ELLERY, G | 1455 20 | 1 | KALE, S | 1418-20 | 0 |
| 5 LASKY, N | 1473 10 | 1 | KANAS, W | 1262-10 | 0 |
| 6 BOOKER, G | 0 0 | .5 | CARTER, D | 1084 0 | .5 |
| 7 WEISNER, T | 1146 0 | 0 | GAMEZ, M | 0 0 | 1 |

NORTH DIVISION TOP TEN

| | | |
|---------------|-------|-------|
| STEVANOVIC, M | UOP | 2245C |
| WONG, P | EXMPL | 2243C |
| JAKSTAS, K | NORTH | 2189 |
| EASTER, R | MTRLA | 2157 |
| BLOOM, B | MTRLA | 2122 |
| SIWEK, M | KEMPR | 2113 |
| CREWSE, L | EXMPL | 2098 |
| LEONG, G | EXCAL | 2072C |
| BUERGER, E | EXCAL | 2063D |
| CIESLEK, D | MTRLA | 2036* |

EAST DIVISION TOP TEN

| | | |
|-----------------|-------|-------|
| CZERNIECKI, A | ALUMN | 2294C |
| KRAS, T | ALUMN | 2262 |
| GREGORY, J | PSTOF | 2207 |
| INUMERABLE, F | PSTOF | 2196 |
| JASAITIS, A | CRT | 2155 |
| WIRTSCHAFTER, D | ALUMN | 2064 |
| LATIMER, E | SEARS | 2040D |
| MARCOWKA, R | PSTOF | 2025C |
| HUTTAR, C | SECST | 2016 |
| FRIESEMA, W | CRT | 2004* |

NEAR WEST DIVISION TOP TEN

| | | |
|--------------|-------|-------|
| LEVINE, D | KNGHT | 2346 |
| BENEDEK, R | KNGHT | 2219C |
| TEGEL, F | DRGNS | 2191D |
| GUIDO, J | ROYLS | 2188 |
| JONES, B | ROCKW | 2137 |
| SAMELSON, C | ROCKW | 2094C |
| BORUM, J | DRGNS | 2006 |
| YOUNG, C | KNGHT | 1952C |
| JACOBS, N | DRGNS | 1944C |
| CHRISTIAN, R | DRGNS | 1935C |

FAR WEST DIVISION TOP TEN

| | | |
|--------------|-------|-------|
| CHACHERE, L | INDNS | 2362 |
| KOZLOVSKY, M | FERMI | 2274* |
| CLARE, B | ROOKS | 2185 |
| WALHOUT, P | WHEAT | 2175 |
| LUDWIG, T | INDNS | 2167 |
| SPIEGEL, L | FERMI | 2117 |
| BERRY, G | ROOKS | 2096D |
| STINSON, M | INDNS | 1998 |
| BUCHNER, R | INDNS | 1991 |
| FEIJFFERS, S | INDNS | 1990 |

MOST IMPROVED PLAYERS

| | | |
|--------------|-------|----|
| EFRON, D | ROCKW | 47 |
| LASKY, J | RADIO | 39 |
| COOPER, W | PSTOF | 36 |
| HILL, R | KNGHT | 30 |
| SATTERLEE, D | JCASE | 29 |
| WINSTON, H | SECST | 28 |
| CARTER, L | PSTOF | 25 |
| MARCOWKA, R | PSTOF | 23 |
| KELLOGG, K | KNGHT | 22 |
| BAURAC, D | KNGHT | 22 |