

Chicago Industrial Chess League

**Bulletin 4, Volume 35
January/February, 1992**

INSIDE THIS ISSUE:

Match Results

**A Word from
the President, Tony Jasaitas
the Editor, Jim Hodina**

Annotated Games

Fischer vs GONCHAROFF?

**2 Squares Column
By Marv Cox**

CICL Ratings List

NEED INPUT! To make the CICL bulletin even better, we are looking for anyone interested in submitting articles or games. If you are interested, call or write to the bulletin editor.

**--Bulletin Editor - James Hodina
Home: 708/799-5571
Work: 312/856-2762**

PRESIDENT'S LETTER

To all members:

Welcome to the second half of our season! I thought that this would be a good time to address a few points, and I would like your feedback on at least one.

Judging by the team standings, it looks like some divisions will have to keep a tight schedule. The final rounds of the playoffs are scheduled for May 16. Having plenty of experience with slippage of schedules, I would rather see you cramming earlier than later, when others will be affected.

I would like to allow for three full weeks prior to May 16 for the first round of the playoffs, plus one week for the unlikely event of an intra-divisional playoff (see our rules to determine this). Therefore division chairmen should make sure that their regular season is completed by April 17 if there is any chance of a playoff game, otherwise April 24. Division chairmen should revise their schedules if necessary to meet this goal. I also strongly encourage them to keep on top of teams that are falling behind, and to use their powers to set match dates (as per our rules) for teams that have trouble doing so themselves. They will receive my full backing in this regard. If logjams do occur, scheduling priority should be given to teams that have a chance at the league playoffs, as other teams can complete their schedule at a more leisurely pace.

An issue on which I would like input from team captains regards the site of the Spring Meeting, scheduled for April 8. At the Fall Meeting we voted a preference for the Oak Park Village Hall. However, that site is no longer available in any practical sense. The village referred me to its Park District, which would charge us \$25 per hour. The most likely bill would therefore be \$75, which would translate to a dues increase of about \$3 per team per meeting. A hotel in Oak Park would charge us \$118 for an evening, or over \$4 per team. I have not inspected either of these sites personally yet. Considering how close our costless prior site (J. I. Case) is to major expressways, I wonder if this is worth it? Please give me your input. Those that still want to have the meeting in Oak Park should call me. If you do not call, I will assume that J. I. Case is still your preference, or that you have no significant preference. If large support still exists for Oak Park, I will inspect these sites and make the final decision myself. Please respond by February 1.

I would like to state a few preferences regarding our banquet:

I would just as soon not have a guest speaker at the banquet. In the time that I have been with the league, I have not seen a guest speaker that was worth the time (no offense intended). If someone wants to take the trouble to procure a truly worthwhile guest speaker, he/she is welcome to volunteer.

PRESIDENT'S LETTER (p.2)

I would also just as soon not have a "head table" at the banquet. I have seen awkward situations arise from having one. One problem is that some people who would be obvious choices for the head table invariably prefer to sit with people at a regular table. This results in people that are less obvious choices being seated there, due to seating constraints. Planning for the head table is also impacted by spouses. Last year we were jammed like sardines up there, and some people were offended at who was or wasn't up there. I would like to state clearly that I see and have seen the head table as more practical than honorary. It is convenient and time-saving for people that will be speaking during the banquet to not have to work their way through the room. If we do wind up having another head table, please keep all these factors in mind and do not read other meanings into it.

Finally, we still do not have a Trophy Chairman. It is time for me to call for volunteers. If you are able to perform this function, please call me.

Yours,

Tony Jasaitis
President CICL

312-431-2966 (W)
708-448-4967 (H)
Both #s have answering machines.

PROPOSED CICL RULE CHANGE
by Tony Jasaitis

Discussion:

It is time that the CICL got in step with the rest of the nation (both within the chess community and without) regarding limitations on smoking. I have been urged (by enough people who have endured the inconsideration of their opponents) to take an initiative on this issue.

As a non-smoker, I could legitimately propose that smoking be banned completely during the match in the playing room (provided the building allows it, of course). It would be in line with standards at many USCF tournaments and corporations. However, I personally do not wish to push the issue beyond the level of resolving blatant irritations. Others are welcome to submit stronger proposals if they wish.

I know several active CICL members (one of whom is a long-time friend of mine), who of their own volition have been smoking away from the board, despite being heavy smokers. I commend them and their captains for their consideration. If these heavy smokers can restrain themselves, so can others.

I have chosen wording that allows action only by players involved in a match result game. If an extra player is the only one objecting to smoking, he can leave, as can players who have completed their games.

Proposal:

A player playing a game counting toward a match result can request of the opposing team that no smoking occur (by any member of the opposition) at the board and/or close enough to be a serious nuisance. Failure to honor such a request will result in a forfeit victory for the requesting player, and a forfeit loss for his opponent (regardless of whether his opponent is the actual offender). Only one forfeit per offender can be incurred.

Note:

While the idea of forfeiting a non-offender is rather striking at first, it is much simpler than the alternative wordings for dealing with odd cases such as smoking extra-boards, smoking by players who have already lost their game (who do you forfeit then?), smoking by a player waiting to win by forfeit himself, etc.

A WORD FROM THE EDITOR

Dear CICL members,

First of all, I just wanted to thank everyone for the positive response on the last bulletin. I'm glad everyone enjoyed it. I have been asked to say a few things in this bulletin, however, and would like to take this opportunity to do so.

CICL Treasurer, Wes Underwood has expressed his appreciation in the prompt payment of CICL dues this year. However, two teams have not yet paid; Alumni West and Chemical Waste Management. If these teams could pay their dues ASAP it would be appreciated. If you have any questions concerning the dues, please contact Wes.

Several games have been submitted to the bulletin for publication this year and this has given rise to the question, "What are the CICL Award Categories for game submission?" Well, they are:

Best Game
Best Salvage
Best Endgame
Best Sacrifice Leading to Victory
Best Upset

Looking through the past season's bulletins, I have not counted a whole lot of games submitted and can honestly say that the prizes are still up in the air. Foremost is the best endgame prize; as almost everyone submits their tactical brilliancies with mate in 20 and not the 80 move squeaker. **SO SEND IN THOSE GAMES!** If your game was not published under any particular award category, don't worry. All submitted games are considered, independently, for each award.

Plan on seeing the next bulletin in the first week of March!

Yours truly,

Jim Hodina
CICL Bulletin Editor

SICILIAN DEFENSE

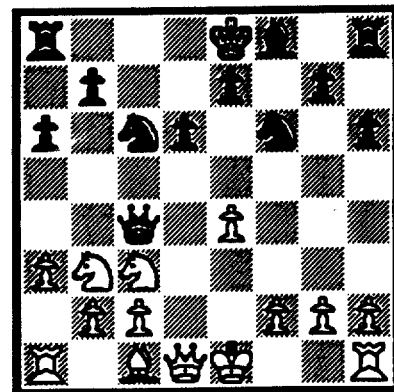
Anonymous

Third Round - North Division

[Note: As requested by the submitter of this game, the players' names have been withheld. Annotations are by White. -ed.]

1.e4, c5 2.Nf3, Nc6 3.Nc3, d6 4.Bc4, Bg4. (Black moved too quickly.) 5.Bxf7, Kxf7. 6.Ng5+, Ke8 7.Qxg4, Nf6 8.Qd1, h6. As White, a pawn up and with my opponent unable to castle, I retreated, unable to see a clear advantage after Qf7+ with the threat of the eventual Nd4 from Black.

9.Nf3, a6?, 10.d4, cxd4 11.Nxd4, Qb6 12.Nb3, Qb4 13.a3, Qc4.



After 13.... Qc4

14. Be3!, Nxe4 15.Qh5+, Kd8 16.Bb6+, Kd7 17.Qf5+, e6 18.Qxe4, Qxe4. A nice bonus from this combination, that I did not see beforehand, is that Black must swap queens.

19.Nxe4, d5 20.O-O-O, Ke8 21.Nc5, Resigns.

CARO-KANN DEFENSE

W: Kaz Jakstas (2213)
B: Mark Siwek (2125)

Northrup vs Kemper, Rd. 2

Annotations by Mark Siwek

In 11 seasons of CICL play, I have submitted four games for publication. Three of them, including this one, involved an exchange sacrifice.

1.e4, c6. A brave decision, considering I was 0-2 lifetime against Jakstas using the Caro-Kann. Maybe one of these days I'll learn how to play it!

2.d4, d5 3.Nc3. In our 1989-90 encounter, Jakstas tried the Panov-Botvinnik Attack: 3.exd5, cxd5 4.c4, Nf6 5.Nc3, e6 6.Nf3, Be7 7.Bg5, O-O 8.Bd3 dxc4 9.Bxc4, Nc6 10.O-O when I erred with 10..., b6?, eventually falling. I later learned *book* was 10..., a6 11.a4, Bd7 12.Re1, h6 13.Bf4, Nb4 14.Qe2, Bc6 15.Rad1, Rc8 =.

3..., dxe4 4.Nxe4, Nd7 5.Nf3, Ngf6 6.Nxf6+, Nxf6 7.Bc4, Bf5. In our 1990-91 match, I played 7..., Bg4? which of course lost to 8.Bxf7+, Kxf7+ 9.Ne5+.

8.c3. White's alternatives are: (1) 8.Qe2, e6 9.Bg5, Be7 10.O-O-O, Bg4 11.h3, Bxf3 12.Qxf3, Nd5 13.Bxe7 Qxe7; (2) 8.O-O, e6 9.h3, Be7 10.Qe2 O-O 11.Rd1, Qc7 12.Nh4, Be4 13.Bg5, Bd5 14.Bd3, b5; (3) 8.Ne5, e6 9.g4, Bg6 10.h4, Nd7 11.Bf4, Nxe5 12.Bxe5, h5. All three are given in various opening manuals as leading to equality.

8..., e6 9.O-O, Bg4. I thought the key to the position was the e5 square. My intent was to exchange my *problem bishop* for the valuable white knight.

10.h3, Bxf3 11.Qxf3, Be7 12.Re1, O-O 13.Bf4. Played after a lot of thought, as was my reply. Do I go for the c5 lever, or play on the d5 strongpoint?

13..., Nd5 14.Be5. While the

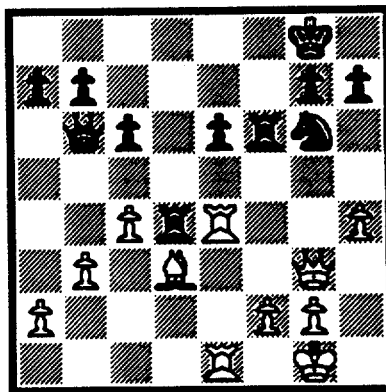
bishop could be effective at this outpost, it will not be as effective as a knight (see note to Black's 9th). If White doesn't react quickly, Black can consolidate with Bf6, g6, Bg7, or Ne7-g6, either way, building a fortress around his King.

14...., Bf6 15.Bd3. Turning his attention to the kingside and opening up the possibility of c4.

15..., Bxe5 16.dxe5 Qb6. A double-edged move. Since White will be attacking on the kingside, it's usually not prudent to relocate potential defenders away from the action. Nonetheless, I thought I had sufficient resources to defend my Monarch. The text clears the d-file for the rooks, hits at the white b-pawn (a distraction), and attacks White's f-pawn (stay tuned). However, this changes.

20...., Rd4 21.h4?!, f5. White's last move was not unexpected, but my defense may have been. I don't think White's pawn sacrifice is sound, as 21...., Nxe4 22.Qh5, Ng6 23.Rxd4, Qxd4 24.Bxg6, hxg6 25.Qd1, Rd8 26.Qe2, Qd2 looks strong, but I preferred the text for reasons soon apparent. If White doesn't take en passant, his initiative would be blunted, my knight would be superior to his bishop, and he'd have two weak pawns. If he does take....

22.exf6, Rxf6 23.Qg3



After 23.Qg3

23...., Rxd3! The key move, but only if you saw the followup on move 26. We're now back to more

traditional chess--the file (see note to White's 20th).

24.Qxd3, Qxf2+ 25.Kh2, Nxe5 26.R1e2. 26.Qd8+, Kf7 27.Qd7 Kg6 28.Qe8+, Kh6 29.R1e2, Nf3+ 30.Kh2, Nxe2 wins for Black. I had also looked at 26.Qg3, which would likewise be met by...

26...., Nf3+ 27.Qxf3, Rxf3 28.Rxf2, Rxf2 29.Rxe6, Kf7. Inventory time. Black has regained the exchange, is a pawn up, and should win a second one. He should shelter his king on h7 with pawns at h6 and g7, and create a passed pawn with his upcoming Queenside majority. He needs to minimize White's counterplay by keeping the rook off the 7th rank.

30. Rd6, Ke7 31.Rd3, Rxa2 32.Re3+, Kf7 33.Rf3+, Kg8 34.Rd3, h6 35.Rd8+, Kh7 36.Rd7, b6 37.Kh3, Ra3 38.Rd3, a5 39.Rf3, b5 40.cxb5 41.Kg4, a5 0-1.

FISCHER vs GONCHAROFF?

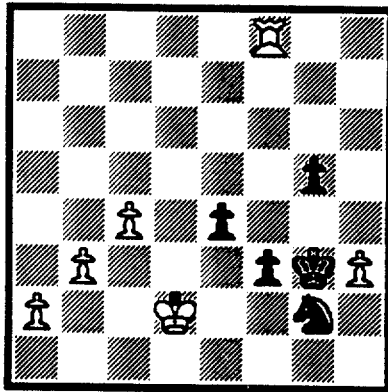
Last month we featured the infamous Fischer vs. Puto game, which we now all know about. Well that article inspired CICL's Nik Goncharoff to dust off his trophy case and bring forth his own victory over the then reigning US Champion, Bobby Fischer.

Nik met Bobby Fischer across the board in the second day of a two day exhibition in May, 1964 - one day after Mr. Puto's triumph. This day, Fischer challenged 71 opponents while losing only four games and drawing eleven.

The score of the game is given below. Although the champion is up the exchange, it is interesting to see that even the greatest make the oldest mistakes such as pawn grabbing.

1.P-K4, P-QB4 2.N-KB3, N-QB3 3.P-Q4, PxP 4.NxP, P-K4 5.N-N5, P-QR3 6.N-Q6 ch, BxN 7.QxB, Q-B3 8.Q-R3, Q-K2 9.Q-KN3, Q-B3 10.N-B3, Q-N3 11.QxQ, RPxQ 12.N-Q5, R-N1 13.B-K3, KN-K2 14.O-O-O, P-QN4 15.P-KB4, B-N2

16.B-K2, P-Q3 17.P-KR3, P-B4
 18.B-B3, K-B2 19.KR-B1 QR-Q1
 20.PxBP, NPxP 21.NxN, KxN
 22.PxP, K-K3 23.B-N5, PXP 24.BxR,
 RxB 25.RxR, NxR 26.BxB, NxB
 27.R-B3, P-N4 28.R-QB3, P-R4
 29.R-B7, N-Q3 30.P-QN3, P-B5
 31.R-B5, N-B4 32.RxNP, N-K6
 33.RxRP, NxNP 34.R-R8, P-B6
 35.K-Q2, P-K5 36.R-K8 ch, K-B4
 37.P-B4, K-B5 38.R-B8 ch, K-N6
 39.Resigns



Fischer vs Goncharoff

Remember this position. You never know where it may pop up next... right, Puto?

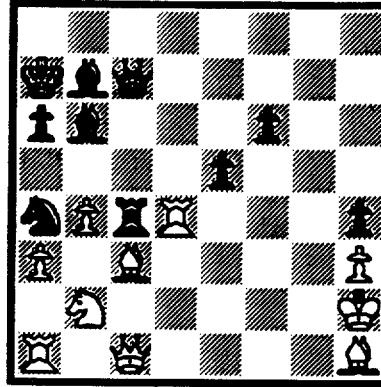
THE 2 SQUARES COLUMN

by Marv Cox

"If two squares are attacked more times than they are defended they may fall."

The swish-en-aug is a very powerful weapon. As you recall, a long range piece hiding behind and masked by another piece can result in a swish-en-aug play. If the masking piece moves to attack, and the masked long range piece is suddenly exposed to generate another attack, there are two attacks which have been generated by a single move. It's as though we had been allowed two moves in succession.

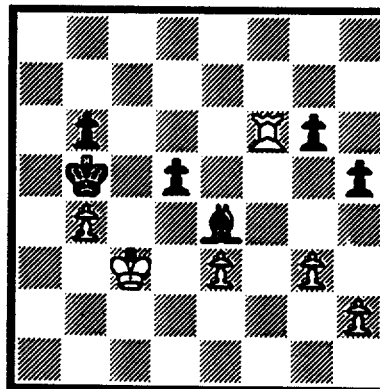
The following diagram shows the power of the swish-en-zug. The little black pawn swallows four big white pieces--and hasn't even a trace of indigestion.



Black to Play

1...., exd4+. A swish-en-zug.
 2.Kg1, dxc3+. A second swish-en-zug.
 3.Kf1, cxb2+. A third swish-en-zug. This time the queen is one of the targets. Qd1, Rc1. Give the pawn some help. 5.Rxc1, Qxc1. More help for the pawn. 6.Qxc1, bxc1(Q)+. And the king has no clothes.

"If two squares are attacked more times than they are defended they may fall."



White to Play and Win

Black has weak point at d5 and g5. White has weak point at b4. White also has a possible bishop and pawn in order to set up a winning passed pawn is a typical way of winning with

rook vs. bishop advantage.

1.h4, Ka6. Black's g and h pawns blocked.

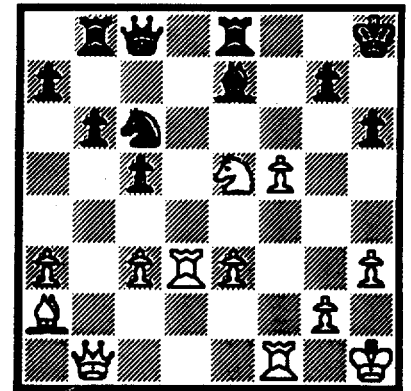
2.Kd4, Kb5 3.Rd6, Ka6. Not Kxb4, Rxb6. 4.Rxd5, Resigns.

My uncle observed to the winner, "You were cheating."

"What!?"

"You were thinking during the game. Compared to your usual style of play, that was certainly the same as cheating."

"If two squares and a line are attacked more times than they are defended they may fall."



White to Play

If the black king were on the b1-h7 diagonal and the white pawn absent from f5 then White could win Black's queen by rook to d8, discovered check.

1.Nf7, Kh7. The black king has been forced to the key diagonal.

2.f6, g6. Black must abandon his bishop or lose his queen.

3.fxg7, Rxe7 4.Rd6, Resigns. Black's troubles stemmed from his white square pawn holes, inability of a black square bishop to defend against an attacking white square bishop, and insufficient black pieces and pawns between his king and center of the board.

RATINGS CHAIRMAN REPORT

I have received two results from the East Division that I could not rate in this issue of the CICL Bulletin. These were the Alumni Central-Columbia match (round 5) and the CRT-Columbia match (round 6). Matches need to be rated in the order that they are played, and I have not received a result from the Alumni Central-Amoco match scheduled in round 4, nor information that this match may have been played out of the scheduled order. The ratings for the round 5 match would depend on rating results from this match, and those of the round 6 match on round 5. Hopefully, with more complete information available by the end of January, these two matches can be rated at that time.

Following is the schedule for submitting results for rating in the next two issues of the bulletin:

<u>Ratings Deadline</u>	<u>Use U.S. mail</u>	<u>OK to use fax</u>
3/1	2/1 - 2/24	2/25 - 2/28

NORTH DIVISION 12-30-1991

TEAM NAME	W	L	D	GAME POINTS	MATCH POINTS	PCT
UOP PROCESS DIV.	3	0	1	18.0	3.5	0.875
FRANKLIN-WATTS	3	0	0	14.0	3.0	1.000
MOTOROLA	2	1	1	16.0	2.5	0.625
EXEMPLARS	1	1	1	9.0	1.5	0.500
KEMPER INSURANCE	1	2	0	5.5	1.0	0.333
FEL-PRO	0	2	1	3.5	0.5	0.167
NORTHROP CORP.	0	4	0	6.0	0.0	0.000

EAST DIVISION 12-30-1991

TEAM NAME	W	L	D	GAME POINTS	MATCH POINTS	PCT
SEARS	3	0	2	21.0	4.0	0.800
CHICAGO RES. & TRDG.	3	1	1	18.5	3.5	0.700
AMOCO CORP.	3	0	0	13.5	3.0	1.000
CHICAGO POST OFFICE	2	1	1	12.0	2.5	0.625
CONTINENTAL BANK	1	4	0	14.0	1.0	0.200
CHICAGO MERC. EXCH.	1	4	0	9.0	1.0	0.200
ALUMNI CENTRAL	1	2	0	7.5	1.0	0.333
COLUMBIA COLLEGE	1	3	0	6.5	1.0	0.250

NEAR WEST DIVISION 12-30-1991

TEAM NAME	W	L	D	GAME POINTS	MATCH POINTS	PCT
ARGONNE KNIGHTS	3	0	1	17.5	3.5	0.875
AT&T CHARGERS	2	1	1	15.0	2.5	0.625
BELL LABS DRAGONS	2	1	1	12.5	2.5	0.625
A & B RADIO	1	2	0	6.0	1.0	0.333
J. I. CASE	1	1	0	5.0	1.0	0.500
ROCKWELL INT'L	0	1	1	4.0	0.5	0.250
BELL LABS ROYALS	0	3	0	6.0	0.0	0.000

FAR WEST DIVISION 12-30-1991

TEAM NAME	W	L	D	GAME POINTS	MATCH POINTS	PCT
AT&T TYROS	2	0	2	17.0	3.0	0.750
FERMILAB	3	0	0	15.5	3.0	1.000
AMOCO RESEARCH LABS	1	2	1	11.0	1.5	0.375
ALUMNI WEST	1	1	1	9.0	1.5	0.500
BELL LABS INDIANS	1	2	0	7.5	1.0	0.333
CHM WASTE MANAGEMENT	0	3	0	0.0	0.0	0.000

24-OCT-91 KEMPER INSURANCE
ROUND 2

4 NORTHROP CORP.

2

BD	RATINGS	SCORE		RATINGS	SCORE
1 SIWEK, M	2125 28	1	JAKSTAS, K	2213-28	0
2 VAN MEER, J	1901 28	1	DIAZ, P	1990-28	0
3 SHIREY, S	0 0	0	BURIAN, D	1650 0	1
4 BLOEDOW, P	1472 -9	0	VIGANTS, A	1617 14	1
5 CUMMUTA, P	1376 0	1F	ALMAZAN, S	0 0	0F
6 GUILLEN, B	0 0	1	ELEK, G	997 0	0
7 OLSEN, A	0 0	.5	CHOUdry, A	0 0	.5 (KEMPR)

07-NOV-91 KEMPER INSURANCE
ROUND 3

1 UOP PROCESS DIV.

5

BD	RATINGS	SCORE		RATINGS	SCORE
1 SIWEK, M	2153-16	0	STEVANOVIC, M	2251 11	1
2 SHIREY, S	0 0	0F	BOLDINGH, E	2134 0	1F
3 GUILLEN, B	1371 44	1	BUERGER, E	2082-30	0
4 BLOEDOW, P	1463 -4	0	MICKLICH, F	1765 4	1
5 CUMMUTA, P	1376 -6	0	SAJBEL, P	1708 6	1
6 GRIEB, S	0 0	0	VAN ZILE, C	1357 0	1
7 OLSEN, A	0 0	1	WIECHERT, A	0 0	0

14-NOV-91 MOTOROLA
ROUND 3

5 NORTHROP CORP.

1

BD	RATINGS	SCORE		RATINGS	SCORE
1 MOYNIHAN, K	2182 23	1	JAKSTAS, K	2185-23	0
2 EASTER, R	2081 25	1	GOLUMBOVSKI, P	2125-25	0
3 WALLACH, C	2051 17	1	DIAZ, P	1962-17	0
4 SAMELSON, C	2066-27	0	BURIAN, D	1650 41	1
5 CIESLEK, D	2036 4	1	VIGANTS, A	1631 -4	0
6 AUGSBURGER, L	1809 0	1	ALMAZAN, S	0 0	0
7 GONCHAROFF, N	1784 0	1	ELEK, G	997 0	0
8 GRYPARIS, J	1396 0	1F	BISH, D	0 0	0F
9 SZAUKELLIS, W	0 0	0	WEARY, M	0 0	1 (MTRLA)
10 REVULURI, K	0 0	0	SZAUKELLIS, W	0 0	1 (MTRLA)
11 WEARY, M	0 0	1	OLUND, P	1413 0	0 (MTRLA)

19-NOV-91 FEL-PRO
ROUND 2

.5 FRANKLIN-WATTS

5.5

BD	RATINGS	SCORE		RATINGS	SCORE
1 WEITZ, R	1834 -1	0	CUSI, R	2455 1	1
2 MONZANI, A	1756 -5	0	BENESA, A	2133 5	1
3 HESS, B	1545 -1	0	GAZMEN, E	2212 1	1
4 FELDMAN, A	1411 0	0	WEBER, L	2311 0	1
5 BAKER, B	1035 0	0	SOLLANO, E	2052 0	1
6 REHORST, R	0 0	.5	MIRANDA, V	0 0	.5

26-NOV-91 FRANKLIN-WATTS
ROUND 3

3.5 EXEMPLARS

2.5

BD	RATINGS	SCORE		RATINGS	SCORE
1 CUSI, R	2456-19	.5	SULLIVAN, J	2038 13	.5
2 GAZMEN, E	2213-34	0	BLOOM, B	2008 34	1
3 WEBER, L	2311-41	0	OSTERLUND, R	1902 41	1
4 SOLLANO, E	2052 3	1	SUERTH, F	1562 -3	0
5 SANCHEZ, R	0 0	1F	EDWARDS, S	1241 0	0F
6 MIRANDA, V	0 0	1F	PETERS, P	1083 0	0F
7 MTRANDA V	0 0	1	SANCHEZ, R	0 0	0 (FRANK)

04-DEC-91 NORTHROP CORP.
ROUND 4

1 FRANKLIN-WATTS

5

BD	RATINGS	SCORE	RATINGS	SCORE
1 JAKSTAS, K	2162-10	0	WEBER, L	2270 16 1
2 GOLUMBOVSKI, P	2100 3	.5	BENESA, A	2138 -3 .5
3 DIAZ, P	1945 -9	0	GAZMEN, E	2179 9 1
4 VIGANTS, A	1627 -4	0	SOLLANO, E	2055 4 1
5 ALMAZAN, S	1344 0	0	SANCHEZ, R	0 0 1
6 ELEK, G	997 0	.5	MIRANDA, V	0 0 .5
7 REICHERT, P	0 0	.5	BURIAN, D	1691 0 .5(NORTH)

05-DEC-91 UOP PROCESS DIV.
ROUND 4

6 FEL-PRO

0

BD	RATINGS	SCORE	RATINGS	SCORE
1 STEVANOVIC, M	2262 2	1	WEITZ, R	1833 -4 0
2 BOLDINGH, E	2134 1	1	HESS, B	1544 -1 0
3 MICKLICH, F	1769 3	1	FELDMAN, A	1411 -5 0
4 SAHLI, E	0 0	1	THOMPSON, R	1081 0 0
5 STUHLBARG, D	1498 2	1	BAKER, B	1035 -3 0
6 SAJBEL, P	1714 0	1F		0 0 0F
7 CHEVERESAN, S	1415 0	1	FIGUEROA, A	0 0 0 (UOP)
8 VAN ZILE, C	1357 0	1	PAPOUTSIS, G	0 0 0 (UOP)

12-DEC-91 EXEMPLARS
ROUND 4

3.5 MOTOROLA

2.5

BD	RATINGS	SCORE	RATINGS	SCORE
1 WONG, P	2209-15	0	MOYNIHAN, K	2205 23 1
2 SULLIVAN, J	2051 15	1	CIESLEK, D	2040-22 0
3 BLOOM, B	2042 22	1	SAMELSON, C	2039-15 0
4 OSTERLUND, R	1943 14	1	AUGSBURGER, L	1809-14 0
5 SUERTH, F	1559 13	.5	GONCHAROFF, N	1784 -6 .5
6 PETERS, P	1083 0	0F	GRYPARIS, J	1396 0 1F
(MTRLA) 7 DUNCAN, T	0 0	1	OLUND, P	1413 0 0
(MTRLA) 8 OLUND, P	1413 0	0	SZAUKELLIS, W	0 0 1
(MTRLA) 9 GRYPARIS, J	1396 24	1	OLUND, P	1413-24 0

05-NOV-91 CHM WASTE MANAGEMENT
ROUND 3

0

AMOCO RESEARCH LABS

6

BD	RATINGS	SCORE	RATINGS	SCORE
1 HOLM, B	1725 -9	0	ROSE, K	1975 9 1
2 ISAACS, D	0 0	0	SAJKOWSKI, D	1889 0 1
3 COOPER, B	0 0	0	SUH, G	1445 0 1
4 TRUSNICH, M	0 0	0	POMA, D	0 0 1
5 ELIASOFF, D	0 0	0	MANILLA, M	0 0 1
6 WITHERIDGE, T	0 0	0	SCHATTKE, N	0 0 1

20-NOV-91 AMOCO RESEARCH LABS
ROUND 4

3

AT&T TYROS

3

BD	RATINGS	SCORE	RATINGS	SCORE
1 SAJKOWSKI, D	1889 26	1	BHOJWANI, C	1942-26 0
2 PAAUWE, N	1397 20	.5	BLAZIE, J	1845-20 .5
3 SUH, G	1445 17	.5	BROZOVICH, J	1781-11 .5
4 POMA, D	0 0	0	SMITH, BR	1561 0 1
5 MANILLA, M	0 0	1	SHAFF, R	1538 0 0
6 SCHATTKE, N	0 0	0	SCHWARTZ, M	1076 0 1

20-NOV-91 FERMILAB 3.5 ALUMNI WEST 2.5
 ROUND 3

BD	RATINGS	SCORE	RATINGS	SCORE
1 KOZLOVSKY, M	2283-27	0	STEIN, P	2209 27 1
2 SPIEGEL, L	2105-10	.5	UNDERWOOD, W	1954 6 .5
3 GLICENSTEIN, J	1955 -8	.5	GRAFT, D	1827 8 .5
4 GAINES, I	1749 15	1	WALLIN, R	1742-22 0
5 PARA, A	1724 5	1	STELTON, N	1378 -5 0
6 CISKO, G	0 0	.5	VERIVE, J	1603 0 .5

11-NOV-91 CONTINENTAL BANK 2.5 CHICAGO POST OFFICE 3.5
 ROUND 4

BD	RATINGS	SCORE	RATINGS	SCORE
1 LORING, S	1982 33	1	GREGORY, J	2150-33 0
2 KOGAN, G	1783 -3	0	INUMERABLE, F	2231 3 1
3 FRAATS, D	1853 0	1F	MARCOWKA, R	2012 0 0F
4 PARAOAN, E	1731 -5	.5	COOPER, W	1663 5 .5
5 DYCZKOWSKI, R	1657-34	0	CARTER, L	1461 34 1
6 SIEGEL, R	1541-40	0	HOWARD, W	1168 40 1

12-NOV-91 SEARS 5 COLUMBIA COLLEGE 1
 ROUND 4

BD	RATINGS	SCORE	RATINGS	SCORE
1 REYES, R	2299 2	1	MCALISTER, K	1857 -3 0
2 GOLLA, R	2059 1	1	KOSTECKA, K	1502 -2 0
3 LATIMER, E	2012 0	1	KASSELBAUM, J	0 0 0
4 MORTON, B	1602 0	1	BRANCH, Y	0 0 0
5 CHAN, H	1556 0	0F	BENTLEY, D	0 0 1F
6 CIBA, F	1406 0	1	TURNER, R	0 0 0

26-NOV-91 SEARS 3 CHICAGO RES. & TRDG. 3
 ROUND 5

BD	RATINGS	SCORE	RATINGS	SCORE
1 REYES, R	2301 9	1	JASAITIS, A	2160-14 0
2 GOLLA, R	2060-16	0	FRIESEMA, W	2035 24 1
3 LATIMER, E	2012 -1	.5	LOSOFF, A	1999 1 .5
4 BROCKETT, M	1771 -8	.5	DENG, J	1644 8 .5
5 MILLER, TT	1548-37	0	BERNARD, D	1283 37 1
6 MORTON, B	1602 0	1	CIMMARRUSTI, A	0 0 0

04-DEC-91 CHICAGO MERC. EXCH. 3.5 CONTINENTAL BANK 2.5
 ROUND 5

BD	RATINGS	SCORE	RATINGS	SCORE
1 FRANK, M	1723 26	1	KOGAN, G	1780-26 0
2 SULLIVAN, C	1598-15	0	PARAOAN, E	1726 15 1
3 COTE, J	1327 -7	0	DYCZKOWSKI, R	1623 7 1
4 RUDDY, J	1231 12	.5	PATEL, R	1430-12 .5
5 GAVIN, L	1205 23	1	ZOELLNER, J	1212-23 0
6 BAKER, LR	0 0	1	MCINTOSH, S	1164 0 0

20-NOV-91 ARGONNE KNIGHTS
ROUND 4

6 A & B RADIO

0

BD		RATINGS	SCORE		RATINGS	SCORE
1	YOUNG,C	1971	4	1	O'DELL,DW	1631 -6 0
2	GREEN,D	1832	4	1	ELLERY,G	1504 -6 0
3	DECMAN,S	1772	0	1F	BOOKER,G	0 0 0F
4	BAURAC,D	1676	7	1	LASKY,N	1458-10 0
5	LEQUERE,F	1588	13	1	MCGRIFF,M	1429-13 0
6	MOHANTY,K	0	0	1	MIKULECKY,B	1286 0 0

NORTH DIVISION TOP TEN

CUSI, R	FRANK	2437
WEBER, L	FRANK	2286
STEVANOVIC, M	UOP	2264C
MOYNIHAN, K	MTRLA	2228
WONG, P	EXMPL	2194C
GAZMEN, E	FRANK	2188
JAKSTAS, K	NORTH	2152C
SIWEK, M	KEMPR	2137
BOLDINGH, E	UOP	2135*
BENESA, A	FRANK	2135

EAST DIVISION TOP TEN

GILES, M	SEARS	2430
REYES, R	SEARS	2310C
CZERNIECKI, A	ALUMN	2253C
INUMERABLE, F	PSTOF	2234
JASAITIS, A	CRT	2146
GREGORY, J	PSTOF	2117
WIRTSCHAFTER, D	ALUMN	2109
HODINA, J	AMCRP	2066
FRIESEMA, W	CRT	2059
GOLLA, R	SEARS	2044C

NEAR WEST DIVISION TOP TEN

LEVINE, D	KNIGHT	2397
BENEDEK, R	KNIGHT	2221D
GUIO, J	ROYLS	2204
WARREN, J	CHRGR	2171D
JONES, B	ROCKW	2149
TEGEL, F	DRGNS	2104D
BERRY, G	KNIGHT	2069D
JACOBS, N	DRGNS	1990C
YOUNG, C	KNIGHT	1975C
DOBROVOLNY, C	ROYLS	1887

FAR WEST DIVISION TOP TEN

KOZLOVSKY, M	FERMI	2256*
STEIN, P	AWEST	2236
LUDWIG, T	INDNS	2150
SPIEGEL, L	FERMI	2095C
STINSON, M	INDNS	2028
BUCHNER, R	INDNS	2027
ROSE, K	AMOCO	1984
UNDERWOOD, W	AWEST	1960C
GLICENSTEIN, J	FERMI	1947
STOLTZ, B	TYROS	1946

MOST IMPROVED PLAYERS

DENG, J	CRT	98
BERNARD, D	CRT	81
FRIESEMA, W	CRT	77
RAFACZ, T	ROCKW	63
BLOOM, B	EXMPL	57
GRYPARIS, J	MTRLA	56
BECKLEY, S	DRGNS	56
OSTERLUND, R	EXMPL	55
BOLDINGH, E	UOP	48
HODINA, J	AMCRP	43

NAME	TEAM	W	L	D	RATING	NAME	TEAM	W	L	D	RATING
ALMAZAN, S	NORTH	0	2	0	1344#	CIBA, F	SEARS	1	0	0	1406
ANDERSON, CJ	ROYLS	0	2	0	1224*	CIESLEK, D	MTRLA	3	1	0	2018
ANGLIN, B	SEARS	0	0	0	1684*	CIMMARRUSTI, A	CRT	0	1	0	0000?
ATKINSON, J	AMCRP	2	1	0	1848	CISKO, G	FERMI	2	0	1	1510#
AUGSBURGER, L	MTRLA	2	1	0	1795	COLE, P	FERMI	1	0	0	0000?
AUSTIN, R	ROYLS	0	1	1	0000?	COOPER, B	WASTE	0	3	0	0000?
BAKER, B	FLPRO	1	2	0	1032	COOPER, W	PSTOF	1	1	2	1668
BAKER, LR	MERC	3	1	0	0000?	COTE, J	MERC	1	4	0	1320*
BARRON, L	MERC	0	0	0	0000?	COX, M	ALUMN	0	0	1	2015C
BAURAC, D	KNIGHT	1	0	0	1683C	CREWSE, L	EXMPL	0	0	0	2066
BEARD, G	ALUMN	0	1	0	1822	CROWE, R	ROYLS	0	1	1	1406*
BECKLEY, S	DRGNS	1	0	2	1448*	CUMMUTA, P	KEMPR	0	2	0	1370
BENEDEK, R	KNIGHT	1	0	1	2221D	CUSI, R	FRANK	1	0	1	2437
BENESA, A	FRANK	1	0	1	2135	CZERNIECKI, A	ALUMN	1	1	1	2253C
BENTLEY, D	COLUM	0	0	0	0000?	DAVIDSON, M	ALUMN	1	0	0	1655*
BERNARD, D	CRT	3	1	1	1320*	DAWSON, J	KNIGHT	0	0	1	1404
BERRY, G	KNIGHT	0	2	1	2069D	DECMAN, S	KNIGHT	0	2	0	1772C
BHOJWANI, C	TYROS	2	1	0	1916	DENG, J	CRT	4	0	1	1652*
BHOJWANI, R	INDNS	1	2	0	1737#	DEWITT, G	ROCKW	0	1	0	1363C
BISH, D	NORTH	0	1	0	0000?	DEZONNO, T	ROCKW	1	1	0	1149#
BLACKMON, E	INDNS	0	1	1	1674	DIAZ, P	NORTH	2	3	0	1936
BLAZIE, J	TYROS	2	0	2	1825	DOBR, K	CHRGR	4	0	0	1604D
BLOEDOW, P	KEMPR	0	2	0	1459C	DOBROVOLNY, C	ROYLS	0	2	1	1887
BLOOM, B	EXMPL	3	0	0	2064	DOWAT, C	FERMI	0	0	0	1496
BOLDINGH, E	UOP	3	0	0	2135*	DUNCAN, T	MTRLA	2	1	0	0000?
BOOKER, G	RADIO	0	0	0	0000?	DURKEE, D	DRGNS	2	2	0	1776C
BRADY, R	CHRGR	1	0	0	1355*	DYCZKOWSKI, R	CONBK	2	2	0	1630#
BRANCH, Y	COLUM	2	2	0	0000?	EASTER, R	MTRLA	2	1	0	2106
BRIONES, M	UOP	0	1	0	1694C	EDWARDS, S	EXMPL	0	0	0	1241
BROCKETT, M	SEARS	0	0	1	1763	EFRON, D	ROCKW	1	1	0	1555
BRONFELD, A	ALUMN	0	0	1	1810	ELEK, G	NORTH	0	3	1	997*
BROTSOS, J	ALUMN	0	1	0	1572D	ELIASOFF, D	WASTE	0	2	0	0000?
BROWN, S	MERC	0	0	0	0000?	ELLERY, G	RADIO	1	2	0	1498*
BROZOVICH, J	TYROS	1	0	1	1770C	ERLENBORN, M	AWEST	1	0	0	1456*
BUCHANAN, R	ALUMN	0	0	1	1464C	EUSTACE, D	INDNS	1	2	0	1375*
BUCHNER, R	INDNS	0	0	0	2027	FABIJONAS, R	EXCAL	0	0	0	1785D
BUERGER, E	UOP	0	1	0	2052D	FELDMAN, A	FLPRO	0	3	0	1406
BURIAN, D	NORTH	2	1	1	1691	FIGUEROA, A	UOP	0	1	0	0000?
CAMPBELL, C	AMCRP	0	0	0	1186	FILICHIA, T	KEMPR	0	0	0	0000?
CAMPBELL, D	AMOCO	0	0	0	0000?	FIPPINGER, P	WHEAT	0	0	0	0000?
CARTER, D	JCASE	0	1	0	1078*	FLYNN, T	INDNS	0	3	0	0000?
CARTER, L	PSTOF	2	2	0	1495	FRAATS, D	CONBK	1	1	1	1853
CEASE, H	FERMI	1	1	0	0000?	FRANEK, M	ALUMN	1	1	0	1856
CELANDER, C	COLUM	0	2	1	0000?	FRANK, M	MERC	2	3	0	1749*
CHAN, H	SEARS	1	1	1	1556	FRIESEMA, W	CRT	5	0	0	2059
CHARKOVSKY, R	ALUMN	0	1	1	1672*	FRISKE, T	EXCAL	0	0	0	1843
CHEVERESAN, S	UOP	3	0	0	1415C	GAINES, I	FERMI	2	0	0	1764C
CHIU, H	KNIGHT	1	0	0	1653*	GAMEZ, M	JCASE	0	0	0	0000?
CHOUDRY, A	KEMPR	0	0	1	0000?	GASTON, K	JCASE	1	2	0	0000?
CHRISTIAN, R	DRGNS	0	0	0	1843C	GAVIN, L	MERC	1	1	1	1228

? - UNRATED

- 5 TO 9 RATED GAMES

* - 10 TO 24 RATED GAMES

C - CENTURY CLUB MEMBER

D - DOUBLE CENTURION

NAME	TEAM	W	L	D	RATING	NAME	TEAM	W	L	D	RATING
GAZMEN, E	FRANK	2	1	0	2188	KLINEFELTER, H	JCASE	1	0	1	1492
GELBART, S	SECST	0	0	0	2272	KOEPELE, J	TYROS	0	0	0	0000?
GIBSON, K	AMCRP	0	0	0	0000?	KOGAN, G	CONBK	1	4	0	1754*
GILES, M	SEARS	0	0	0	2430	KOSTECKA, K	COLUM	0	4	0	1500
GLICENSTEIN, J	FERMI	2	0	1	1947	KOZLOVSKY, M	FERMI	0	1	0	2256*
GOLLA, R	SEARS	3	1	1	2044C	KRAKAU, H	EXMPL	0	0	0	1962
GOLUMBOVSKI, P	NORTH	0	2	1	2103*	KRULL, E	AMCRP	1	0	0	1402*
GONCHAROFF, N	MTRLA	2	0	1	1778D	KUKES, S	AMOCO	0	0	0	2326#
GRAFT, D	AWEST	0	0	3	1835	KUMRO, D	CHRGR	0	3	1	1694D
GREEN, D	KNIGHT	3	0	0	1836C	LAMBIRIS, J	KEMPR	0	0	0	0000?
GREGORY, J	PSTOF	1	2	0	2117	LASKY, J	RADIO	0	2	0	1374
GRIEB, S	KEMPR	0	1	0	0000?	LASKY, JIM	RADIO	0	0	0	1712#
GROTANS, G	MERC	0	0	0	1258*	LASKY, N	RADIO	1	2	0	1448
GRYPARIS, J	MTRLA	2	0	0	1420	LATIMER, E	SEARS	2	1	2	2011D
GUILLEN, B	KEMPR	2	1	0	1415#	LEE, R	TYROS	0	0	0	0000?
GUIO, J	ROYLS	2	0	1	2204	LEMPA, K	SECST	0	0	0	1524*
GUTNIK, I	JCASE	0	0	0	0000?	LENDI, L	WASTE	0	1	0	0000?
HAHNE, D	ROYLS	1	0	1	1569	LEQUERE, F	KNIGHT	1	0	1	1601
HAMILTON, L	AMCRP	2	0	0	1418#	LESTER, M	MTRLA	0	0	0	1588
HAMMOND, M	CONBK	1	0	0	1354*	LEVINE, D	KNIGHT	0	0	0	2397
HAMPER, P	AMCRP	1	2	0	0000?	LITVINAS, A	ALUMN	1	1	1	1755C
HARRIS, F	SEARS	0	0	0	0000?	LODER, S	INDNS	0	0	0	0000?
HARRIS, R	FERMI	2	0	0	1578	LORING, S	CONBK	1	0	0	2015
HERMANN, T	WASTE	0	2	0	0000?	LOSOFF, A	CRT	1	1	1	2000
HERNANDEZ, D	MTRLA	0	0	0	1462	LUDWIG, T	INDNS	2	1	0	2150
HESS, B	FLPRO	0	3	0	1543	MANILLA, M	AMOCO	3	1	0	1231#
HICKS, C	ROYLS	0	0	0	1461	MARCOWKA, R	PSTOF	2	1	0	2012C
HILL, R	KNIGHT	1	0	1	1656	MCALISTER, K	COLUM	2	2	0	1854
HILLIARD, J	CONBK	0	0	0	0000?	MCFARLIN, B	KEMPR	0	0	0	0000?
HILTON, J	MERC	0	1	0	0000?	MCGRIFF, M	RADIO	2	1	0	1416
HODINA, J	AMCRP	2	0	0	2066	MCINTOSH, S	CONBK	1	1	0	1164#
HOLM, B	WASTE	0	3	0	1716	MCPHAIL, C	TYROS	1	1	0	0000?
HOWARD, W	PSTOF	2	2	0	1208*	MCQUINN, J	ROCKW	0	1	0	1509
HUGHES, N	KEMPR	0	0	0	1825C	MICKLICH, F	UOP	2	2	0	1772C
HUMPF, R	RADIO	0	0	0	1293*	MIKULECKY, B	RADIO	0	2	1	1286
HUNG, N	MTRLA	0	1	0	0000?	MILLER, TT	SEARS	2	1	0	1511#
HUTTAR, C	SECST	0	0	0	2016	MIRANDA, V	FRANK	1	0	2	0000?
INUMERABLE, F	PSTOF	2	0	2	2234	MITCHAM, L	ROCKW	0	1	0	1638#
ISAACS, D	WASTE	0	3	0	0000?	MOHANTY, K	KNIGHT	2	0	0	0000?
JACOBS, N	DRGNS	2	0	1	1990C	MOKHTAR, M	INDNS	1	0	0	0000?
JAKSTAS, K	NORTH	0	3	1	2152C	MOLES, J	MTRLA	0	0	0	1209
JAMES, V	TYROS	1	0	0	0000?	MONZANI, A	FLPRO	0	2	0	1751
JASAITIS, A	CRT	1	2	2	2146	MOODY, L	CONBK	0	0	0	0000?
JONES, B	ROCKW	0	0	0	2149	MORGAN, T	MTRLA	0	0	0	0000?
KALE, S	JCASE	2	0	0	1481*	MORRISON, J	KNIGHT	1	0	0	1728
KALIHHER, C	FERMI	0	0	0	1903	MORTON, B	SEARS	3	0	2	1602
KANAS, W	JCASE	1	1	0	1279	MOTYCKA, R	JCASE	0	2	0	1193
KASSELBAUM, J	COLUM	0	1	0	0000?	MOYNIHAN, K	MTRLA	2	0	1	2228
KELLOGG, K	KNIGHT	0	0	0	1675C	NELSON, H	CONBK	0	1	0	1960
KELLY, S	DRGNS	2	2	0	1336*	NELSON, R	WHEAT	0	0	0	0000?

? - UNRATED
- 5 TO 9 RATED GAMES
* - 10 TO 24 RATED GAMES

C - CENTURY CLUB MEMBER
D - DOUBLE CENTURION

NAME	TEAM	W	L	D	RATING	NAME	TEAM	W	L	D	RATING
NWABUDE, O	ROYLS	0	1	0	0000?	SAJKOWSKI, D	AMOCO	2	2	0	1915
O'DELL, DW	RADIO	0	1	1	1625	SAMELSON, C	MTRLA	1	3	0	2024C
OELHAFEN, A	EXMPL	0	1	0	1279*	SANCHEZ, R	FRANK	1	1	0	0000?
OGASAWARA, L	ROYLS	0	2	0	1808	SATTERLEE, D	JCASE	1	0	1	1637
OGASAWARA, R	MTRLA	0	1	0	1604D	SCHATTKE, N	AMOCO	1	2	0	0000?
OLSEN, A	KEMPR	1	1	1	0000?	SCHULMAN, R	EXMPL	0	0	0	1925C
OLUND, P	MTRLA	1	4	0	1389#	SCHWARTZ, M	TYROS	2	1	0	1076#
OSTERLUND, R	EXMPL	2	0	0	1957	SCHWARTZ, S	SEARS	0	0	0	1719C
OTAKAN, V	FLPRO	0	0	0	0000?	SEEGER, S	WHEAT	0	0	0	0000?
PAAUWE, N	AMOCO	0	0	1	1417	SHAFF, R	TYROS	0	1	0	1538C
PAPOUTSIS, G	UOP	0	1	0	0000?	SHEU, G	ROYLS	1	1	0	1347*
PARA, A	FERMI	3	0	0	1729#	SHIREY, S	KEMPR	0	2	0	0000?
PARAOAN, E	CONBK	2	2	1	1741	SIEGEL, R	CONBK	1	1	0	1501
PATEL, R	CONBK	1	0	1	1418*	SIMS, B	CRT	0	0	0	0000?
PETERS, P	EXMPL	0	1	0	1083*	SIWEK, M	KEMPR	1	1	1	2137
PETWAY, L	PSTOF	0	0	0	1471*	SKULSKI, I	EXMPL	0	0	0	1838
POLIZZANO, S	WHEAT	0	0	0	0000?	SLUSSER, C	CRT	0	1	0	0000?
POMA, D	AMOCO	2	2	0	1132#	SMILEY, R	AMCRP	1	0	1	1994
POTTS, S	WHEAT	0	0	0	0000?	SMITH, BR	TYROS	3	1	0	1561
POYNOR, D	WHEAT	0	0	0	0000?	SMITH, JM	SECST	0	0	0	1196*
PUECHNER, R	KEMPR	0	0	0	0000?	SOLLANO, E	FRANK	3	0	0	2059
PULTS, J	AMOCO	0	0	0	1814*	SOMBONG, M	CONBK	0	0	0	1754
PYLES, C	WHEAT	0	0	0	1294#	SOPRYCH, T	AMCRP	0	0	0	1620C
RADAVICIUS, E	CHRGR	1	1	2	1728C	SPIEGEL, L	FERMI	1	0	1	2095C
RADKE, P	COLUM	0	1	0	0000?	STAMM, V	CHRGR	2	0	0	1739D
RADULSKI, R	TYROS	0	0	0	0000?	STEIN, P	AWEST	2	0	1	2236
RAFACZ, T	ROCKW	2	0	0	1669	STELTON, N	AWEST	1	1	0	1373
RAFACZ, W	ROCKW	0	2	0	1605	STEMPINSKI, P	NORTH	0	0	0	1423
REED, L	PSTOF	0	0	0	1737#	STEVANOVIC, M	UOP	3	0	1	2264C
REHORST, R	FLPRO	0	0	1	0000?	STINSON, M	INDNS	0	0	0	2028
REICHERT, P	NORTH	0	0	1	0000?	STOLTZ, B	TYROS	1	1	1	1946
REID, C	JCASE	0	1	0	1237	STUHLBARG, D	UOP	1	1	0	1500C
REID, D	MERC	0	0	0	0000?	SUERTH, F	EXMPL	0	1	1	1572
REVULURI, K	MTRLA	1	1	0	0000?	SUH, G	AMOCO	1	2	1	1462#
REYES, R	SEARS	3	0	1	2310C	SULLIVAN, C	MERC	0	5	0	1583*
RIEDERER, D	CRT	1	1	0	1116#	SULLIVAN, J	EXMPL	2	0	1	2066D
RINGENBERG, T	AMOCO	0	0	0	1363*	SWIDERSKI, M	CHRGR	0	0	1	1353C
RIPPE, D	TYROS	0	0	0	0000?	SZAUKELLIS, W	MTRLA	2	2	0	0000?
RO, D	CRT	0	1	0	1488*	TATARSKY, J	KEMPR	0	0	0	1435#
ROGERS, N	PSTOF	0	0	0	1973*	TAYLOR, F	WHEAT	0	0	0	1214*
ROQUE, F	COLUM	0	1	0	0000?	TECEL, F	DRGNS	1	2	1	2104D
ROSE, K	AMOCO	1	0	0	1984	THOMAS, G	TYROS	1	0	0	1453
ROSEN, JJ	FERMI	0	0	0	0000?	THOMAS, J	CHRGR	1	2	0	1543C
ROISING, G	EXCAL	0	0	0	1433	THOMPSON, R	FLPRO	1	1	0	1081
ROSKO, D	SEARS	0	0	0	0000?	TOLPPI, J	WASTE	0	2	0	0000?
ROSLEY, D	ROYLS	0	0	1	1816	TROPP, W	TYROS	0	0	0	0000?
RUDDY, J	MERC	0	2	1	1243*	TRUSNICH, M	WASTE	0	1	0	0000?
RZESZUTKO, R	ALUMN	0	0	1	1981	TURNER, R	COLUM	1	3	0	0000?
SAHLI, E	UOP	2	0	1	0000?	TURPIN, S	INDNS	0	0	0	0000?
SAJBEL, P	UOP	2	1	0	1714	UNDERWOOD, W	AWEST	1	1	1	1960C

? - UNRATED

- 5 TO 9 RATED GAMES

* - 10 TO 24 RATED GAMES

C - CENTURY CLUB MEMBER

D - DOUBLE CENTURION

NAME	TEAM	W	L	D	RATING	NAME	TEAM	W	L	D	RATING
VAN MEER, J	KEMPR	1	0	0	1929	WEST, R	MTRLA	0	0	0	0000?
VAN ZILE, C	UOP	2	1	0	1357#	WHITE, H	JCASE	1	1	0	1748
VELAYUTHAM, S	TYROS	0	0	0	1305#	WHITSITT, S	DRGNS	0	0	0	1571*
VERIVE, J	AWEST	0	0	1	1603#	WIECHERT, A	UOP	0	2	0	0000?
VIGANTS, A	NORTH	1	2	1	1623	WIENS, P	WHEAT	0	0	0	1387
WALHOUT, P	WHEAT	0	0	0	2088	WINGFIELD, L	INDNS	0	0	0	0000?
WALKER, R	FERMI	0	1	0	1376C	WINSTON, H	SECST	0	0	0	1994
WALLACH, C	MTRLA	2	0	0	2068	WIRTSCHAFTER, D	ALUMN	0	0	0	2109
WALLIN, R	AWEST	1	2	0	1720*	WITHERIDGE, T	WASTE	0	1	0	0000?
WARD, C	DRGNS	1	2	1	1605D	WONG, P	EXMPL	1	1	0	2194C
WARREN, J	CHRGR	3	1	0	2171D	YOUNG, C	KNGHT	3	0	0	1975C
WEARY, M	MTRLA	3	0	0	0000?	ZAROMB, S	KNGHT	0	0	0	1480
WEBER, L	FRANK	2	1	0	2286	ZEFF, T	SEARS	0	0	0	0000?
WEISNER, T	RADIO	0	0	0	1142	ZEIDEL, J	MERC	0	1	0	1956
WEITZ, R	FLPRO	0	2	0	1829C	ZIMMERMAN, T	TYROS	0	0	0	0000?
WENTLING, C	AMCRP	1	1	0	1532	ZOELLNER, J	CONBK	0	1	1	1189

? - UNRATED
- 5 TO 9 RATED GAMES
* - 10 TO 24 RATED GAMES

C - CENTURY CLUB MEMBER
D - DOUBLE CENTURION