

Chicago Industrial Chess League

Bulletin 5, Volume 35

March - April, 1992

INSIDE THIS ISSUE:

Match Results / Division Standings

CICL Meeting Announcement

Annotated Games

**2 Squares Column
By Marv Cox**

CICL Ratings List

***NEED INPUT!** To make the CICL bulletin even better, we are looking for anyone interested in submitting articles or games. If you are interested, call or write to the bulletin editor.*

*--Bulletin Editor - James Hodina
Home: 708/799-5571
Work: 312/856-2762*

CICL OFFICERS
As of March 16, 1992

Addresses/Phones are listed in order of preference

PRESIDENT	Anthony Jasaitis P.O. Box 664 Bedford Park, IL 60499-0664 Chicago Research & Trading 33rd Floor 440 S. LaSalle Chicago, IL 60605	312-431-2966 (W) 708-448-4967 (H)
SECRETARY	Leonard Spiegel MS 219 Fermilab Batavia, IL 60510	708-840-2809 (W) 708-377-2675 (H)
TREASURER	Wesley K. Underwood 207 S. Dorchester Ave. Wheaton, IL 60187	708-752-5127 (W) 708-462-0393 (H)
RATINGS CHAIRMAN	Charles Ward 615 S. Lincoln Hindale, IL 60521	708-979-4599 (W) 708-325-3885 (H) 708-979-8451 (FAX)
BULLETIN CHAIRMAN	James Hodina 718 Central Park Ave. Flossmoor, IL 60422	312-856-2762 (W) 708-799-5571 (H)
NORTH DIVISION	Leonard Augsburger 16 N. Fiore Vernon Hills, IL 60061	708-632-5102 (W) 708-816-1649 (H)
EAST DIVISON CHAIRMAN	William Cooper 7035 W. Imlay Chicago, IL 60631	312-765-3493 (W) 312-763-1567 (H)
NEAR WEST DIVISION CHAIRMAN	Dan Kumro 802 S. Elmhurst Ave. Mount Prospect, IL 60056	708-259-4981 (H)
FAR WEST DIVISION CHAIRMAN	Irwin Gaines Fermilab - m/s 127 P. O. Box 500 Batavia, IL 60510	708-840-4022 (W)

CICL SPRING BUSINESS MEETING

April 8, 1992

7:00 pm

J. I. CASE

County Line Road, North of I-55

DIRECTIONS

County Line Rd. is west of I-294 (Tri-State Tollway), and east of Rt. 83. Take I-55 (Stevenson Expwy.) to NORTH County Line Rd. exit. You will soon come to a stoplight for the frontage road. Turn LEFT (west) and head directly into the entrance for the J. I. Case complex (do not make another left turn onto the frontage road). Park in the lot to the south (left) of the building and look for signs directing you to the cafeteria.

RSVP

Not necessary if you are on the current rating list. Otherwise, call Skip Kale of J. I. Case at (708) 887-2372 (W) to register. You will need to check in with the guard.

AGENDA HIGHLIGHTS

Election of officers for next season, discussion & vote on proposals submitted in bulletin, selection of playoff site, vote on formal admission of new teams admitted after the Fall Meeting.

IMPORTANT UPCOMING EVENTS

Playoff Saturday: May 16
League Banquet: June 12

A WORD FROM THE EDITOR

LET'S TALK PARITY. Not one team has gone unscathed this season, with Argonne Knights of the Near West Division posting the best record this season to date at 5-0-1. The second playoff spot in the Near West is still up for grabs with four teams within one game of each other on the loss column. The East Division has shaped up to be the hottest race yet. With only two games remaining, **FIVE**, teams are within one and a half games of each other and four are within a single victory/loss. After completing their round robin, the North division has three teams all grouped within a half point. The Far West has Fermi-Lab leading by a match point over the AT&T Tyros, based on their slim 3.5 to 2.5 victory last December, 18, while Amoco Research Labs hangs on at two games out.

DON'T FORGET. The CICL Spring Business Meeting is April 8th. Attendance is strongly encouraged as we discuss important issues before the league members. The meeting will be held at J. I. Case at 7:00 pm. Please read the announcement on the previous page for more details.

HEY JIM, HOW DID CICL PLAYERS DO IN THE MID-AMERICA CLASS CHAMPIONSHIP MARCH 13-15!? Quite well, to be honest. Tony Jasaitis, of CRT, captured the Class A title going 5-0. Tony captured the crown with a final round win on board one while Columbia College's Kelvin McAlister sat on board two and Bob Stoltz of the AT&T Tyros played at the third board. Bob tied for second, behind Tony, in the Class A division. J. I. Case's Skip Kale also had a strong performance as he went into the last round on board two and a chance to take it all. This performance attests to the strength of the CICL and its players. Good job everyone!

Jakstas vs Siwek revisited. Not once this season has any of the published analysis of CICL games been challenged....UNTIL NOW. In the last bulletin, Mark Siwek shared with us his game and analysis against Mr. Jakstas. As an anecdote to Siwek's analysis, Ruben Reyes, of Sears, states that after Black's rook sack on move 23....., Rxd3, White has a way to draw(!) after the text 24.Qxd3, Qf2+ 25.Kh2, Nxd4. Ruben's analysis: If After 26.Qd8+, Kf7 27.Qd7+ (?) White does seem worse. But if 27.Qc7+! instead, White may have a way out because 27....., Kg6 allows 28.Qg3+ forcing the exchange of Queens and if 27.Qc7+, Kg8, White can draw by repetition with Qd8+. Ruben asks if he is missing something, but I do not see a refutation. Nicely done Mr. Reyes! Any rebuttal Mr. Siwek?

QP - Stonewall

W: Duane Satterlee (1637)
B: Norm Jacobs (1990)

CASE-IH vs AT&T Dragons

Annotations by D. Satterlee

1.d4, Nf6 2.Nf3, g6 3.e3, Bg7 4.Bd3, d5 5.Nd2, O-O 6.Ne5, Nfd7. This seemed like a good time to shift from a Colle formation to a Stonewall.

7.f4, c5 8.c3, cxd4 9.exd4, Nc6 10.Nf3, Ndx e5 11.fxe5, f6. I didn't recapture with my knight because the follow-up moves by Black could cost me a pawn or prevent me from castling.

12.exf6, exf6 13.O-O, Be6 14.h3, Qd7 15.Kh2, a6 16.Bf4, b5 17.a3, Na5 18.Qc2, Rac8 19.Rae1, Nc4 20.Re2, Rfe8 21.Rfe1 Bf7. The position began to look fairly sterile, so Black decided to let me exchange rooks and he would try some end game strategies.

22.Rxe8+, Rxe8 23.Rxe8+, Qxe8. White maneuvered around trying to get a protected passed pawn and capture the knight so his backward pawn would be shielded by black pay, but Black was too wiley for that.

24.Qc1, Bf8 25.b4 Qc6 26.Qa1, Nd6 27.Bxd6, Qxd6+. I expected Black to check with the bishop, but he used this position to get behind my pawns.

28.g3, Qe6 29.Qe1, Bh6 30.Qd1, Be8 31.Qf1, Bd7 32.a4, Qe3 33.a5, Kf7 34.Kg2, Qc1. Black is in a position to start destroying the white pawn formation. White dared not capture the black queen, because the black bishop would recapture and take his backward c-pawn before the king could protect it. It looks bleak for White, but....

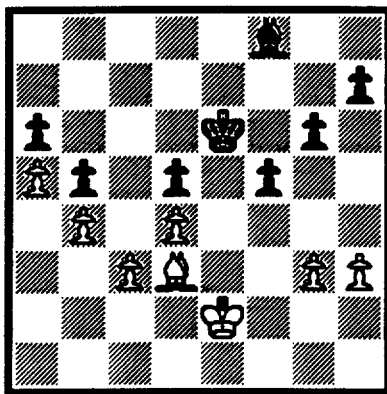
35. Ne5+!, Ke6. White saw the black f-pawn was pinned and forced an exchange reducing the black forces. Black decided to exchange

queens to prevent the capture of his f-pawn and a possible perpetual check.

36.Nxd7, Qxf1+ 37.Kxf1, Kxd7. But now the white king can beat the black bishop to the backward c-pawn.

38.Ke2, f5. With opposite color bishops it looks like a book draw. However, there was potential. I looked at Bxb5 here, but the black king is too close to a8 for the sacrifice to work. So I looked for another strategy to assist my queenside pawn majority.

39.Bc2, Ke6. 40.Bd3, Bf8. After the black king moved further from a8, I moved the bishop back. If Black saw the threat, he must at least limit the movement of his king or bishop. But the potential in the position was not seen by Black, so the winning sacrifice was made.



After 40...., Bf8

41.Bxb5!, Bd6. I expected Black to resign at this point, thinking nothing could prevent a White victory. If Black recaptures with a-pawn, neither the king nor the bishop can stop White's a-pawn from queening. However, Black looked at this a long time and found some counterplay. He gamely fought on until time control. White had to play accurately with some time pressure: about 12 minutes were left on his clock.

42.Bxa6, Bxg3 43.Bd7, Bc7 44.Kd3, f4 45.Bc8+, Kd6 46.Bg4, Bd8 47.c4, dxc4 48.Kxc4, Kc7 49.Bf3, Be7 50.b5, Resigns.

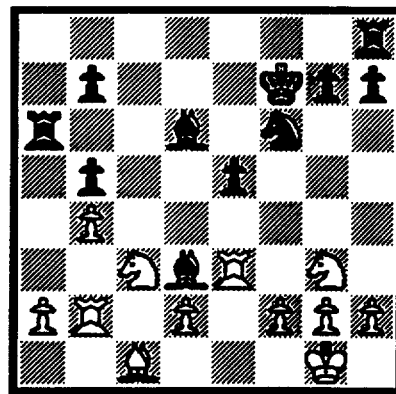
Opposite colored bishops or not, this is a win for White. The black pawns are powerless. The white bishop and pawn are posted strategically so that no black pawn can ever cross the a8-h1 diagonal without help from the king. Meanwhile, the white bishop keeps the king off the diagonal squares, and controls the queening square for the a-pawn. With the aid of the king, White's three passed pawns are too powerful. The moves, b6, Kb5, a6, a7, a8(Q) can be delayed, but not stopped, by the black bishop.

Caro-Kann

W: Gregory (2169)
B: Loring (1980)

Post Office vs. Continental Bank

1.e4 c6 2.c4, d5 3.exd5, cxd5 4.cxd5, Nf6 5.Qa4+, Bd7 6.Qb3, Qb6 7.Qxb6, axb6 8.Nc3, Na6 9.Bxa6, Rxa6 10.b4, b5 11.Nge2, e5 12.dxe6, fxe6 13.Rb1, e5 14.O-O, Bf5 15.Rb2, Bd3 16.Re1, Kf7 17.Ng3, Bd6 18.Re3



After 18. Re3

e4 19.Ncx e4, Bxe4 20.Nxe4, Nxe4 21.Rxe4, Rha8 22.Rb1, Rxa2 23.Bb2, Rxb2 24.Rd1, Bb4 25.d4, Rd2 26.RESIGNS.

THE
2
SQUARES
COLUMN

by Marv Cox

"If three squares are attacked more times than they are defended they may fall."

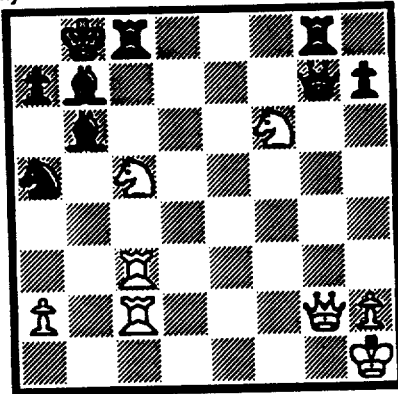


Diagram 39

In diagram 39, white is attacking b7 once, c8 twice by masked attack, and d7 twice, a total of five pieces. Black guards those three squares with only four pieces, his knight, king, queen, and the rook on g8. The rook on c8 does not count as a guard because it is on one of the three squares under attack. Ditto for the bishop on b7. Five attacking pieces and only four guarding pieces. Hopefully white can cause the defense to collapse. If not, he will lose his pinned queen to the black bishop.

1. Ncd7, Qxd7 2. Nxd7, Ka8. It's now a two squares problem, c8 and b7 are attacked three times and are defended by two black pieces, the knight and the rook on g8. The bishop is on one of the attacked squares and is also pinned to the long diagonal so is really not a guard for c8.

3. Rxc8, Rxc8. It is now essentially a one square problem. One attack against c8 and no viable guards.

4. Rxc8. A strange turn around. Initially the white queen was pinned

on the long diagonal against her king by the black bishop. Finally the same bishop was pinned along that same diagonal against her king by that same white queen. As my uncle says, "You can't win by giving up."

"If a line is attacked more times than it is defended it may fall."

White stupidly lost his queen for only a rook and knight and a few moves later diagram 40, below was reached.

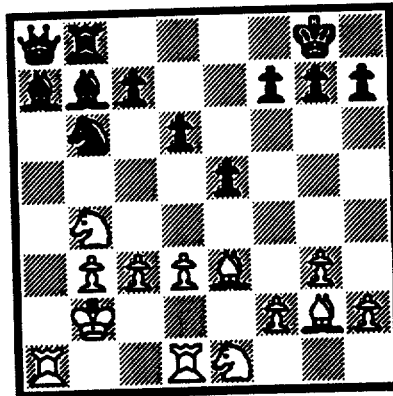


Diagram 40

White at least temporarily controls the a file. Can he do something with it while black's pieces are so badly congested in the corner?

1. Rxa7, Qxa7. Opening the file.

2. Ra1, and white will regain his material plus little more. The resulting position is extremely difficult and highly anti-drawish because a rook can not control the same squares that two minor pieces can. Also the queen side pawn formation presents two half-open files. So defense by either side becomes almost impossible. My uncle now strikes a theatrical pose and quotes from a Civil War general, "He who gits thar fustes with the mustes wins." Try the resulting end game with the white pieces while you buddy has black. Then try again with your buddy having the white pieces. Happy headache!

"If three squares are attacked more times than they are defended they may fall."

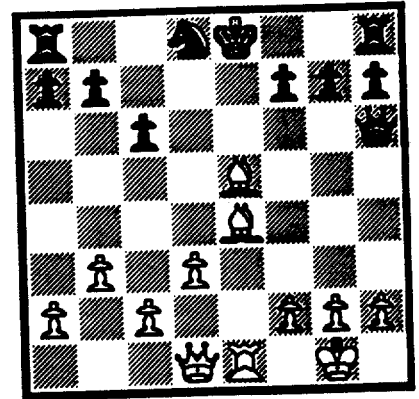


Diagram 41

In diagram 41 above black falls prey to a double swish-en-zug. You remember the swish-en-zug. That's the play when there is a masked attack along a line and the masking piece moves so that there are simultaneously two attacks from two different pieces. In the double swish-en-zug there is an attack along a line with two making pieces on that line. In the diagram the black king is on the same file as the white rook and there are two white swish-en zug bishops masking the rook attack.

1. Bxg7, Qxg7. If Qd6 then Bxc6.
2. Bxc6, Kf8 3. Re8.

KING'S INDIAN ATTACK

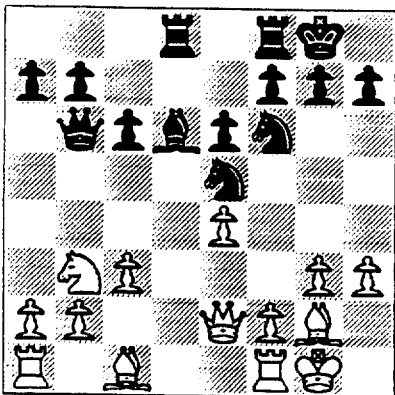
W: Russ Rzeszutko (1981)
B: Kelvin McAlister (1857)

Columbia College vs. Alumni

Notes by Kelvin McAlister

1. Nf3 Nf6 2. g3 d5 3. Bg2 Bg4 4. d3 Bxf3 5. Bxf3 e6 6. 0-0 Be7 7. Nd2 0-0 8. e4 c6 9. Bg2 Qb6 10. c3 Nbd7 11. Qe2 dxe4 12. dxe4 Ne5 13. h3 Rad8 14. Nb3 Bd6

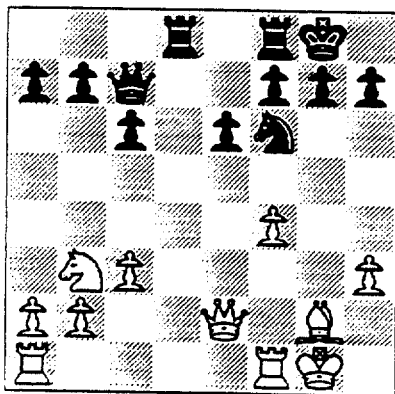
This move loses a piece to 15. Be3! Qc7 16.f4 Ng6 17.e5. Better was 14...Rd7 15.Be3 Qc7. If 16.Bxa7 b6 17.Bxb6 Qxb6 gives Black a small edge.



After 14....Bd6

15. Be3 Qc7 16. f4 Ng6 17. e5 Nxe5 18. fxe5 Bxe5 19. Bf4 Bxf4 20. gxf4

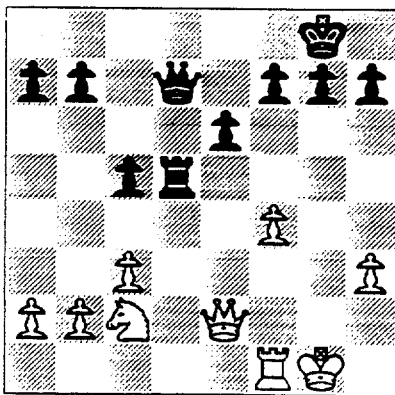
Better was 20. Rxf4 Nd5 21. Bxd5 Rxd5 22. Rd1 Rfd8 23. Rxd5 Rxd5 24. Kg2 with a more secure Kingside.



After 20. gxf4

20...Nd5 21. Bxd5 Rxd5 22. Rad1 Rfd8 23. Rxd5 Rxd5 24. Nd4 c5 25. Nc2 Qd7

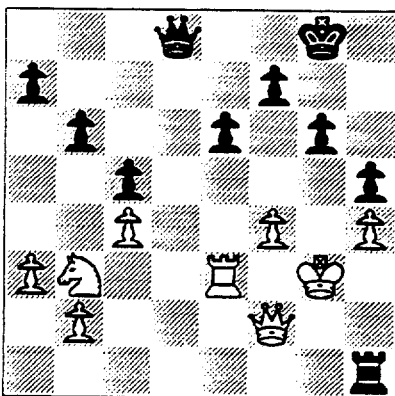
Taking control of the only open file and threatening 26....Rd2 winning a piece.



After 25. ...Qd7

26. Rf2 Rd1+ 27. Kg2 Qd5+ 28. Qf3 Qd7 29. a3 g6 30. Nd4 Rb1 31. Nb3 Qb5 32. Qe4 Rd1 33. Qc2 Qc6+ 34. Rf3 Qd5 35. c4 Qd6 36. Qf2 b6 37. Kg3 Qd8 38. h4 h5 39. Re3 Rh1

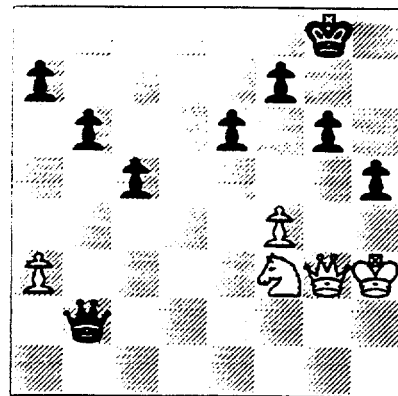
This move wins the h-pawn. Necessary was 39.Qg2.



After 39....Rh1

40. Kg2 Rxf4 41. Rh3 Rxf3 42. Kxf3 Qd3+ 43. Qg3 Qxc4 44. Nd2 Qe2 45. Nf3 Qxb2

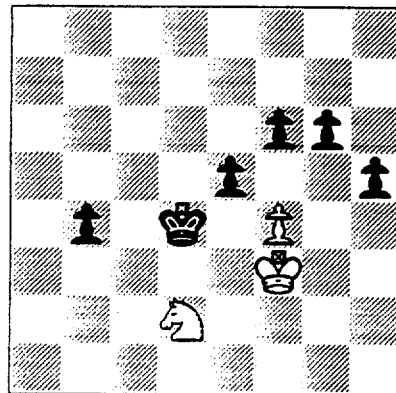
This pawn capture gives Black a winning advantage with 2 passed pawns and a active Queen.



After 45. ...Qxb2

46. Qg5 Kg7 47. Qe5+ Qxe5 48. Nxe5 Kf6 49. Kg3 Ke7 50. Kh4 b5 51. Nc6+ Kd6 52. Nxa7 b4 53. axb4 cxb4 54. Nc8+ Kd7 55. Nb6+ Kc6 56. Nc4 f6 57. Kg3 Kc5 58. Nd2 Kd4 59. Kf3 e5 0-1

If 60. fxe5 then fxe5 61. Kg3 e4. Or 61. Ke2 Kc3 etc.



FINAL POSITION

RATINGS CHAIRMAN REPORT

Two teams in the Far West Division appear to have become inactive: Chemical Waste Management and Alumni West. The remaining four teams have continued play within the existing schedule. More information on this situation may become available later on.

Following is the schedule for submitting results for rating in the next issue of the CICL Bulletin:

<u>Ratings Deadline</u>	<u>Use U.S. mail</u>	<u>OK to use fax</u>
April 10	3/9 - 4/5	4/6 - 4/10

NORTH DIVISION 03-08-1992

TEAM NAME	W	L	D	GAME POINTS	MATCH POINTS	PCT
UOP PROCESS DIV.	3	0	3	24.0	4.5	0.750
MOTOROLA	3	1	2	24.0	4.0	0.667
FRANKLIN-WATTS	3	0	2	20.0	4.0	0.800
EXEMPLARS	2	2	2	18.0	3.0	0.500
KEMPER INSURANCE	2	3	0	8.5	2.0	0.400
NORTHROP CORP.	1	4	0	10.0	1.0	0.200
FEL-PRO	0	4	1	5.5	0.5	0.100

EAST DIVISION 03-08-1992

TEAM NAME	W	L	D	GAME POINTS	MATCH POINTS	PCT
CHICAGO RES. & TRDG.	6	1	1	33.0	6.5	0.813
SEARS	5	1	2	34.0	6.0	0.750
ALUMNI CENTRAL	6	2	0	31.5	6.0	0.750
AMOCO CORP.	5	3	0	27.5	5.0	0.625
CHICAGO POST OFFICE	4	2	1	22.5	4.5	0.643
CONTINENTAL BANK	1	7	0	18.0	1.0	0.125
COLUMBIA COLLEGE	1	7	0	10.5	1.0	0.125
CHICAGO MERC. EXCH.	1	6	0	9.0	1.0	0.143

NEAR WEST DIVISION 03-08-1992

TEAM NAME	W	L	D	GAME POINTS	MATCH POINTS	PCT
ARGONNE KNIGHTS	5	0	1	28.5	5.5	0.917
AT&T CHARGERS	4	2	1	25.0	4.5	0.643
BELL LABS DRAGONS	3	2	2	21.0	4.0	0.571
J. I. CASE	3	3	1	19.0	3.5	0.500
ROCKWELL INT'L	2	2	1	11.5	2.5	0.500
BELL LABS ROYALS	1	6	0	16.0	1.0	0.143
A & B RADIO	1	4	0	10.0	1.0	0.200

FAR WEST DIVISION 03-08-1992

TEAM NAME	W	L	D	GAME POINTS	MATCH POINTS	PCT
FERMILAB	5	1	0	26.0	5.0	0.833
AT&T TYROS	3	1	2	23.5	4.0	0.667
AMOCO RESEARCH LABS	2	2	2	17.0	3.0	0.500
BELL LABS INDIANS	1	4	1	13.5	1.5	0.250
ALUMNI WEST	1	1	1	9.0	1.5	0.500
CHM WASTE MANAGEMENT	0	3	0	0.0	0.0	0.000

05-NOV-91 CHICAGO POST OFFICE 3.5 AMOCO CORP. 2.5
 ROUND 5

BD	RATINGS	SCORE		RATINGS	SCORE
1 INUMERABLE, F	2234-33	0	HODINA, J	2066 33	1
2 MARCOWKA, R	2012 -1	.5	SMILEY, R	1994 2	.5
3 COOPER, W	1668 33	1	ATKINSON, J	1848-33	0
4 CARTER, L	1495 25	1	WENTLING, C	1532-25	0
5 HOWARD, W	1208 34	1	KRULL, E	1402-34	0
6 MOSES, J	0 0	0	HAMILTON, L	1418 0	1

21-NOV-91 AMOCO CORP. 1 ALUMNI CENTRAL 5
 ROUND 4

BD	RATINGS	SCORE		RATINGS	SCORE
1 HODINA, J	2099-13	0	CZERNIECKI, A	2253 9	1
2 SMILEY, R	1996 -1	.5	RZESZUTKO, R	1981 1	.5
3 ATKINSON, J	1815 12	.5	COX, M	2015-12	.5
4 HAMPER, P	0 0	0	FRANEK, M	1856 0	1
5 KRULL, E	1368 -4	0	LITVINAS, A	1755 3	1
6 HAMILTON, L	1418-13	0	BROTSOS, J	1572 9	1

04-DEC-91 COLUMBIA COLLEGE 1.5 ALUMNI CENTRAL 4.5
 ROUND 5

BD	RATINGS	SCORE		RATINGS	SCORE
1 MCALISTER, K	1854 30	1	RZESZUTKO, R	1982-30	0
2 KOSTECKA, K	1500 17	.5	BEARD, G	1822-17	.5
3 MC SMITH, B	0 0	0	BRONFELD, A	1810 0	1
4 BRANCH, Y	0 0	0	CHARKOVSKY, R	1672 0	1
5 BENTLEY, D	0 0	0	DAVIDSON, M	1655 0	1
6 TURNER, R	0 0	0	BUCHANAN, R	1464 0	1

18-DEC-91 CHICAGO RES. & TRDG. 6 COLUMBIA COLLEGE 0
 ROUND 6

BD	RATINGS	SCORE		RATINGS	SCORE
1 JASAITIS, A	2146 8	1	MCALISTER, K	1884 -8	0
2 FRIESEMA, W	2059 2	1	KOSTECKA, K	1517 -2	0
3 LOSOFF, A	2000 0	1	BRANCH, Y	0 0	0
4 DENG, J	1652 6	1	TURNER, R	1322 -6	0
5 RO, D	1488 0	1	BENTLEY, D	0 0	0
6 BERNARD, D	1320 0	1F	PALMER, S	0 0	0F

18-DEC-91 ALUMNI CENTRAL 4 CHICAGO POST OFFICE 2
 ROUND 6

BD	RATINGS	SCORE		RATINGS	SCORE
1 CZERNIECKI, A	2262-18	0	INUMERABLE, F	2201 26	1
2 WINSTON, H	1994 0	1F	MARCOWKA, R	2011 0	0F
3 COX, M	2003 7	1	COOPER, W	1701 -7	0
4 FRANEK, M	1856 6	1	CARTER, L	1520 -6	0
5 LITVINAS, A	1758-29	0	HOWARD, W	1242 43	1
6 BROTSOS, J	1581 0	1	MOSES, J	0 0	0
(CONBK) 7 SIEGEL, R	1501-28	0	PATEL, R	1418 28	1 (CONBK)

14-JAN-92 AMOCO CORP. 6 CHICAGO MERC. EXCH. 0
 ROUND 6

BD	RATINGS	SCORE	RATINGS	SCORE
1 HODINA, J	2086 6	1	FRANK, M	1749 -6 0
2 SMILEY, R	1995 4	1	SULLIVAN, C	1583 -4 0
3 ATKINSON, J	1827 2	1	COTE, J	1320 -2 0
4 WENTLING, C	1507 8	1	RUDDY, J	1243 -8 0
5 HAMILTON, L	1405 12	1	RUDDY, J	1235-12 0
6 HAMPER, P	0 0	1F		0 0 OF

15-JAN-92 CONTINENTAL BANK .5 SEARS 5.5
 ROUND 6

BD	RATINGS	SCORE	RATINGS	SCORE
1 KOGAN, G	1754 -2	0	REYES, R	2310 1 1
2 SOMBONG, M	1754 -7	0	GOLLA, R	2044 5 1
3 PAROAN, E	1741 -8	0	LATIMER, E	2011 5 1
4 DYCZKOWSKI, R	1630 -5	.5	CHAN, H	1556 5 .5
5 SIEGEL, R	1473-15	0	MORTON, B	1602 15 1
6 ZOELLNER, J	1189 -6	0	MILLER, TT	1511 6 1
7 SIEGEL, R	1458 -8	0	PAROAN, E	1733 8 1 (CONBK)
8 SIEGEL, R	1450 -7	0	PAROAN, E	1741 7 1 (CONBK)
9 SOMBONG, M	1747-22	0	PAROAN, E	1748 22 1 (CONBK)
10 PAROAN, E	1770 6	1	PATEL, R	1446 -6 0 (CONBK)

15-JAN-92 COLUMBIA COLLEGE 1 CHICAGO POST OFFICE 5
 ROUND 7

BD	RATINGS	SCORE	RATINGS	SCORE
1 MCALISTER, K	1876-14	0	MARCOWKA, R	2011 9 1
2 KOSTECKA, K	1515-12	0	COOPER, W	1694 12 1
3 BRANCH, Y	1370-14	0	CARTER, L	1514 14 1
4 TURNER, R	1316-25	0	HOWARD, W	1285 25 1
5 BENTLEY, D	0 0	1	MOSES, J	0 0 0
6 TUKES, W	0 0	0	WILLIAMSON, A	0 0 1

28-JAN-92 SEARS 5 AMOCO CORP. 1
 ROUND 7

BD	RATINGS	SCORE	RATINGS	SCORE
1 REYES, R	2311 7	1	HODINA, J	2092-10 0
2 GOLLA, R	2049-17	0	SMILEY, R	1999 26 1
3 LATIMER, E	2016 8	1	ATKINSON, J	1829-11 0
4 BROCKETT, M	1763 9	1	WENTLING, C	1515 -9 0
5 MORTON, B	1617 11	1	HAMILTON, L	1417-11 0
6 MILLER, TT	1517 13	1	KRULL, E	1364-13 0

29-JAN-92 CHICAGO RES. & TRDG. 5 CONTINENTAL BANK 1
 ROUND 7

BD	RATINGS	SCORE	RATINGS	SCORE
1 JASAITIS, A	2154 5	1	PAROAN, E	1776 -5 0
2 FRIESEMA, W	2061 7	1	KOGAN, G	1752 -7 0
3 LOSOFF, A	2000 5	1	DYCZKOWSKI, R	1625 -5 0
4 DENG, J	1658 10	1	SIEGEL, R	1443-10 0
5 BERNARD, D	1320 30	1	PATEL, R	1440-30 0
6 RO, D	1488-38	0	ZOELLNER, J	1183 38 1
7 CIMMARRUSTI, A	0 0	1	MCINTOSH, S	1164 0 0

30-JAN-92 CHICAGO MERC. EXCH.	0	ALUMNI CENTRAL	6
ROUND 7			
BD	RATINGS	SCORE	RATINGS SCORE
1 FRANK,M	1743 -8	0	COX,M 2010 8 1
2 SULLIVAN,C	1579 -4	0	WINSTON,H 1994 4 1
3 COTE,J	1318 -2	0	FRANEK,M 1862 2 1
4 RUDDY,J	1223 -1	0	BRONFELD,A 1810 1 1
5 HILTON,J	0 0	0	BROTSOS,J 1581 0 1
6 BAKER,LR	0 0	0	DAVIDSON,M 1655 0 1

18-FEB-92 ALUMNI CENTRAL	4.5	COLUMBIA COLLEGE	1.5
ROUND 8			
BD	RATINGS	SCORE	RATINGS SCORE
1 CZERNIECKI,A	2244-12	.5	MCALISTER,K 1862 19 .5
2 COX,M	2018 2	1	KOSTECKA,K 1503 -2 0
3 BEARD,G	1805 0	OF	HERNANDEZ,DD 0 0 1F
4 LITVINAS,A	1729 2	1	TURNER,R 1291 -3 0
5 CHARKOVSKY,R	1672 6	1	BRANCH,Y 1356 -6 0
6 BUCHANAN,R	1464 0	1	BENTLEY,D 0 0 0

25-FEB-92 CONTINENTAL BANK	2.5	CHICAGO RES. & TRDG.	3.5
ROUND 8			
BD	RATINGS	SCORE	RATINGS SCORE
1 PAROAN,E	1771 -4	0	JASAITIS,A 2159 4 1
2 KOGAN,G	1745 -6	0	FRIESEMA,W 2068 6 1
3 FRAATS,D	1853 32	1	LOSOFF,A 2005-32 0
4 DYCZKOWSKI,R	1620 17	.5	BARGERSTOCK,D 1962-17 .5
5 SIEGEL,R	1433 36	1	DENG,J 1668-36 0
6 ZOELLNER,J	1221-15	0	BERNARD,D 1350 15 1

26-FEB-92 SEARS	2.5	AMOCO CORP.	3.5
ROUND 8			
BD	RATINGS	SCORE	RATINGS SCORE
1 REYES,R	2318 6	1	HODINA,J 2082 -9 0
2 GOLLA,R	2032-15	0	SMILEY,R 2025 23 1
3 LATIMER,E	2024 -8	.5	ATKINSON,J 1818 12 .5
4 MORTON,B	1628-30	0	WENTLING,C 1506 30 1
5 CHAN,H	1561-10	.5	HAMILTON,L 1406 10 .5
6 MILLER,TT	1530-11	.5	KRULL,E 1351 11 .5

26-NOV-91 ROCKWELL INT'L	4	J. I. CASE	2
ROUND 4			
BD	RATINGS	SCORE	RATINGS SCORE
1 RAFACZ,W	1605 31	1	WHITE,H 1748-31 0
2 MITCHAM,L	1638 0	OF	SATTERLEE,D 1637 0 1F
3 RAFACZ,T	1669 12	1	KLINEFELTER,H 1492-12 0
4 MCQUINN,J	1509 21	1	KALE,S 1481-21 0
5 DEWITT,G	1363 17	1	KANAS,W 1279-17 0
6 DEZONNO,T	1149-17	0	REID,C 1237 17 1

18-DEC-91	ROCKWELL INT'L	0	ARGONNE KNIGHTS	6	
ROUND 5					
BD		RATINGS	SCORE	RATINGS	SCORE
1	RAFACZ,W	1636 -1	0	LEVINE,D	2397 1 1
2	RAFACZ,T	1681 -4	0	BERRY,G	2069 3 1
3	MITCHAM,L	1638-14	0	DECMAN,S	1772 9 1
4	MCQUINN,J	1530-15	0	HILL,R	1656 15 1
5	DEWITT,G	1380-10	0	LEQUERE,F	1601 10 1
6	DEZONNO,T	1132 -8	0	DAWSON,J	1404 8 1

07-JAN-92	J. I. CASE	4	BELL LABS ROYALS	2	
ROUND 5					
BD		RATINGS	SCORE	RATINGS	SCORE
1	WHITE,H	1717-17	0	OGASAWARA,L	1808 17 1
2	SATTERLEE,D	1637 18	1	HAHNE,D	1569-18 0
3	KALE,S	1460 19	1	CROWE,R	1406-19 0
4	KLINEFELTER,H	1480-37	0	ANDERSON,CJ	1224 37 1
5	REID,C	1254 0	1F		0 0 0F
6	CARTER,D	1078 0	1F		0 0 0F

14-JAN-92	ARGONNE KNIGHTS	5	J. I. CASE	1	
ROUND 6					
BD		RATINGS	SCORE	RATINGS	SCORE
1	BERRY,G	2072 3	1	WHITE,H	1700 -5 0
2	YOUNG,C	1975 4	1	SATTERLEE,D	1655 -6 0
3	DECMAN,S	1781 4	1	KLINEFELTER,H	1443 -6 0
4	BAURAC,D	1683-23	0	KALE,S	1479 34 1
5	HILL,R	1671 4	1	REID,C	1254 -4 0
6	LEQUERE,F	1611 0	1	GASTON,K	0 0 0

22-JAN-92	A & B RADIO	1.5	BELL LABS DRAGONS	3.5	
ROUND 5					
BD		RATINGS	SCORE	RATINGS	SCORE
1	BOOKER,G	0 0	0	TEGEL,F	2104 0 1
2	O'DELL,DW	1625 18	.5	JACOBS,N	1990-12 .5
3	JADERBERG,J	0 0	0	WARD,C	1605 0 1
4	LASKY,N	1448 15	1	KELLY,S	1336-15 0
5	HUMPF,R	1293 0	0	PIAO,T	0 0 1
6	LASKY,J	1374 0	0F	BECKLEY,S	1448 0 0F

29-JAN-92	A & B RADIO	2.5	AT&T CHARGERS	3.5	
ROUND 6					
BD		RATINGS	SCORE	RATINGS	SCORE
1	BOOKER,G	1402 -1	0	WARREN,J	2171 0 1
2	O'DELL,DW	1643-17	0	RADAVICIUS,E	1728 11 1
3	ELLERY,G	1498-11	0	KUMRO,D	1694 7 1
4	LASKY,J	1374 33	1	THOMAS,J	1543-33 0
5	LASKY,N	1463 9	.5	DOBR,K	1604 -6 .5
6	MIKULECKY,B	1286 27	1	BRADY,R	1355-27 0

29-JAN-92	ROCKWELL INT'L	3.5	BELL LABS ROYALS	2.5	
ROUND 6					
BD		RATINGS	SCORE	RATINGS	SCORE
1	RAFACZ,W	1635 -2	0	GUIO,J	2204 2 1
2	MITCHAM,L	1624 -8	0	DOBROVOLNY,C	1887 8 1
3	RAFACZ,T	1677 32	1	OGASAWARA,L	1825-32 0
4	DEWITT,G	1370 24	1	CROWE,R	1387-24 0
5	HARBUZIUK,W	0 0	.5	ANDERSON,CJ	1261 0 .5
6	DEZONNO,T	1124 0	1	AUSTIN,R	0 0 0
12-FEB-92	J. I. CASE	3	BELL LABS DRAGONS	3	
ROUND 7					
BD		RATINGS	SCORE	RATINGS	SCORE
1	WHITE,H	1695 -4	0	TEGEL,F	2104 3 1
2	SATTERLEE,D	1649 39	1	JACOBS,N	1978-26 0
3	KALE,S	1513 -8	0	DURKEE,D	1776 5 1
4	KLINEFELTER,H	1437 33	1	WARD,C	1605-22 0
5	MOTYCKA,R	1193-15	0	KELLY,S	1321 15 1
6	CARTER,D	1078 0	1	PIAO,T	0 0 0
13-FEB-92	AT&T CHARGERS	2	BELL LABS ROYALS	4	
ROUND 7					
BD		RATINGS	SCORE	RATINGS	SCORE
1	WARREN,J	2171 -9	0	GUIO,J	2206 20 1
2	KUMRO,D	1701-21	0	HAHNE,D	1551 32 1
3	STAMM,V	1739-25	0	HICKS,C	1461 37 1
4	RADAVICIUS,E	1739-28	0	ANDERSON,CJ	1261 42 1
5	DOBR,K	1598 0	1	AUSTIN,R	0 0 0
6	THOMAS,J	1510 0	1F		0 0 OF
02-MAR-92	BELL LABS ROYALS	1.5	AT&T CHARGERS	4.5	
ROUND 8					
BD		RATINGS	SCORE	RATINGS	SCORE
1	DOBROVOLNY,C	1895 -8	0	WARREN,J	2162 4 1
2	OGASAWARA,L	1793 0	OF	RADAVICIUS,E	1711 0 1F
3	HAHNE,D	1583 29	1	KUMRO,D	1680-19 0
4	CROWE,R	1363 14	.5	DOBR,K	1598 -9 .5
5	ANDERSON,CJ	1303-10	0	THOMAS,J	1510 10 1
6	AUSTIN,R	0 0	0	BRADY,R	1328 0 1
7	SHEU,G	1347-13	0	HICKS,C	1498 13 1 (ROYLS)
04-MAR-92	BELL LABS DRAGONS	2	J. I. CASE	4	
ROUND 8					
BD		RATINGS	SCORE	RATINGS	SCORE
1	TEGEL,F	2107 3	1	WHITE,H	1691 -4 0
2	JACOBS,N	1952-10	.5	SATTERLEE,D	1688 15 .5
3	DURKEE,D	1781-26	0	KLINEFELTER,H	1470 39 1
4	WARD,C	1583-18	0	KALE,S	1505 27 1
5	KELLY,S	1336-28	0	REID,C	1250 28 1
6	PIAO,T	0 0	.5	GASTON,K	0 0 .5

10-DEC-91	BELL LABS INDIANS	1	FERMILAB	5
	ROUND 4			
	BD	RATINGS	SCORE	RATINGS SCORE
1	LUDWIG, T	2150 7	.5	KOZLOVSKY, M 2256 -7 .5
2	BHOJWANI, R	1737 -5	0	SPIEGEL, L 2095 5 1
3	BLACKMON, E	1674 15	.5	GLICENSTEIN, J 1947-15 .5
4	EUSTACE, D	1375 -5	0	PARA, A 1729 5 1
5	TURPIN, S	0 0	0	HARRIS, R 1578 0 1
6	FLYNN, T	0 0	0	CISKO, G 1510 0 1
18-DEC-91	FERMILAB	3.5	AT&T TYROS	2.5
	ROUND 5			
	BD	RATINGS	SCORE	RATINGS SCORE
1	KOZLOVSKY, M	2249 7	1	STOLTZ, B 1946 -7 0
2	SPIEGEL, L	2100 5	1	BLAZIE, J 1825 -8 0
3	GLICENSTEIN, J	1932-10	.5	BROZOVICH, J 1770 7 .5
4	GAINES, I	1764 7	1	SMITH, BR 1561-11 0
5	PARA, A	1734-34	0	SHAFF, R 1538 23 1
6	HARRIS, R	1578-30	0	THOMAS, G 1453 30 1
7	CISKO, G	1510 3	1	SCHWARTZ, M 1076 -3 0
23-JAN-92	BELL LABS INDIANS	3	AMOCO RESEARCH LABS	3
	ROUND 6			
	BD	RATINGS	SCORE	RATINGS SCORE
1	LUDWIG, T	2157 12	1	ROSE, K 1984-12 0
2	BHOJWANI, R	1732-12	0	SAJKOWSKI, D 1915 12 1
3	EUSTACE, D	1370 26	1	PAAUWE, N 1417-26 0
4	BROWN, R	0 0	OF	MANILLA, M 1231 0 1F
5	MCCLOUD, E	0 0	0	POMA, D 1132 0 1
6	FOLEY, T	0 0	1	SCHATTKER, N 0 0 0
(DRGNS) 7	PIAO, T	0 0	1	PIASZYNSKI, J 0 0 0
05-FEB-92	FERMILAB	2	AMOCO RESEARCH LABS	3
	ROUND 7			
	BD	RATINGS	SCORE	RATINGS SCORE
1	SPIEGEL, L	2105 -7	.5	SAJKOWSKI, D 1927 11 .5
2	GLICENSTEIN, J	1922-21	.5	PAAUWE, N 1391 21 .5
3	PARA, A	1700-39	0	RINGENBERG, T 1363 39 1
4	HARRIS, R	1548 6	1	MANILLA, M 1231 -6 0
5	CISKO, G	1513-40	0	POMA, D 1132 40 1
6		0 0	OF	0 0 0F
27-FEB-92	BELL LABS INDIANS	2	AT&T TYROS	4
	ROUND 8			
	BD	RATINGS	SCORE	RATINGS SCORE
1	LUDWIG, T	2169-36	0	BHOJWANI, C 1916 36 1
2	BHOJWANI, R	1720-10	0	STOLTZ, B 1939 10 1
3	BLACKMON, E	1689 28	1	BROZOVICH, J 1777-19 0
4	EUSTACE, D	1396 32	1	SMITH, BR 1550-32 0
5	BROWN, R	0 0	0	THOMAS, G 1483 0 1
6	MCCLOUD, E	0 0	0	SCHWARTZ, M 1073 0 1
7	ALONSO, G	0 0	0	JAMES, V 0 0 1
8	ALONSO, G	0 0	1	JAMES, V 0 0 0

16-JAN-92 FRANKLIN-WATTS
ROUND 5

3 UOP PROCESS DIV. 3

BD	RATINGS	SCORE		RATINGS	SCORE
1 BENESA, A	2135	30	1	STEVANOVIC, M	2264-20 0
2 GAZMEN, E	2188	19	1	BOLDINGH, E	2135-19 0
3 SOLLANO, E	2059-23		0	BUERGER, E	2052 15 1
4 MIRANDA, V	0	0	1	MICKLICH, F	1772 0 0
5 SANCHEZ, R	0	0	0	SAJBEL, P	1714 0 1
6	0	0	0F	SAHLI, E	0 0 1F

22-JAN-92 NORTHROP CORP.
ROUND 5

4 EXEMPLARS 2

BD	RATINGS	SCORE		RATINGS	SCORE
1 JAKSTAS, K	2152	2	.5	WONG, P	2194 -2 .5
2 DIAZ, P	1936	31	1	SULLIVAN, J	2066-20 0
3 BURIAN, D	1691	-8	0	OSTERLUND, R	1957 8 1
4 VIGANTS, A	1623	-4	.5	SUERTH, F	1572 4 .5
5 REICHERT, P	0	0	1	EDWARDS, S	1241 0 0
6 ALMAZAN, S	1344	0	1F	PETERS, P	1083 0 0F

23-JAN-92 MOTOROLA
ROUND 6

5 FEL-PRO 1

BD	RATINGS	SCORE		RATINGS	SCORE
1 SAMELSON, C	2024	7	1	WEITZ, R	1829-11 0
2 CIESLEK, D	2018	3	1	HESS, B	1543 -3 0
3 AUGSBURGER, L	1795	4	1	FELDMAN, A	1406 -4 0
4 GONCHAROFF, N	1778	0	1	THOMPSON, R	1081 -1 0
5 GRYPARIS, J	1420-41		0	BAKER, B	1032 41 1
6 OLUND, P	1389	0	1F		0 0 0F
7 OLUND, P	1389	0	1	WEST, R	0 0 0 (MTRLA)
8 SZAUKELLIS, W	0	0	1	DUNCAN, T	0 0 0 (MTRLA)

05-FEB-92 FRANKLIN-WATTS
ROUND 7

3 MOTOROLA 3

BD	RATINGS	SCORE		RATINGS	SCORE
1 WEBER, L	2286	10	1	WALLACH, C	2068-10 0
2 BENESA, A	2165	14	1	SAMELSON, C	2031 -9 0
3 GAZMEN, E	2207	0	1	WEARY, M	0 0 0
4 SOLLANO, E	2036-23		0	CIESLEK, D	2021 23 1
5 SANCHEZ, R	0	0	0	AUGSBURGER, L	1799 0 1
6 MIRANDA, V	0	0	0F	GONCHAROFF, N	1778 0 1F

06-FEB-92 UOP PROCESS DIV.
ROUND 6

3 EXEMPLARS 3

BD	RATINGS	SCORE		RATINGS	SCORE
1 STEVANOVIC, M	2244	13	1	WONG, P	2192-13 0
2 BCLDINGH, E	2116	18	1	SULLIVAN, J	2046-12 0
3 BUERGER, E	2067-15		0	BLOOM, B	2064 23 1
4 MICKLICH, F	1772	-7	0	OSTERLUND, R	1965 11 1
5 SAJBEL, P	1714-31		0	SUERTH, F	1576 31 1
6 SAHLI, E	0	0	1	PETERS, P	1083 0 0
7 STUHLBARG, D	1500	0	0F	VAN ZILE, C	1357 0 1F(UOP)
8 PAPOUTSIS, G	0	0	0	ADAMI, S	0 0 1 (UOP)

18-FEB-92 FEL-PRO
ROUND 5

1 KEMPER INSURANCE

3

BD	RATINGS	SCORE	RATINGS	SCORE
1 WEITZ, R	1818 -4	0	2137 6	1
2 MONZANI, A	1751 0	OF	0 0	OF
3 HESS, B	1540-28	0	1459 18	1
4 FELDMAN, A	1402 23	1	1415-23	0
5 BAKER, B	1073 0	0	0 0	1
6	0 0	OF	0 0	OF

25-FEB-92 EXEMPLARS
ROUND 7

4 KEMPER INSURANCE

0

BD	RATINGS	SCORE	RATINGS	SCORE
1 SULLIVAN, J	2034 1	1	1477 -1	0
2 BLOOM, B	2087 1	1	1465 -1	0
3 OSTERLUND, R	1976 0	1	0 0	0
4 SUERTH, F	1607 0	1	0 0	0
5	0 0	OF	0 0	OF
6	0 0	OF	0 0	OF

NORTH DIVISION TOP TEN

CUSI, R	FRANK	2437
WEBER, L	FRANK	2296
STEVANOVIC, M	UOP	2257C
MOYNIHAN, K	MTRLA	2228
GAZMEN, E	FRANK	2207
WONG, P	EXMPL	2179C
BENESA, A	FRANK	2179
JAKSTAS, K	NORTH	2154C
SIWEK, M	KEMPR	2143
BOLDINGH, E	UOP	2134*

EAST DIVISION TOP TEN

GILES, M	SEARS	2430
REYES, R	SEARS	2324C
CZERNIECKI, A	ALUMN	2232C
INUMERABLE, F	PSTOF	2227
JASAITIS, A	CRT	2163
GREGORY, J	PSTOF	2117
WIRTSCHAFTER, D	ALUMN	2109
FRIESEMA, W	CRT	2074
HODINA, J	AMCRP	2073
SMILEY, R	AMCRP	2048

NEAR WEST DIVISION TOP TEN

LEVINE, D	KNGHT	2398
GUIO, J	ROYLS	2226
BENEDEK, R	KNGHT	2221D
WARREN, J	CHRGR	2166D
JONES, B	ROCKW	2149
TEGEL, F	DRGNS	2110D
BERRY, G	KNGHT	2075D
YOUNG, C	KNGHT	1979C
JACOBS, N	DRGNS	1942C
DOBROVOLNY, C	ROYLS	1887

FAR WEST DIVISION TOP TEN

KOZLOVSKY, M	FERMI	2256*
STEIN, P	AWEST	2236
LUDWIG, T	INDNS	2133
SPIEGEL, L	FERMI	2098C
STINSON, M	INDNS	2028
BUCHNER, R	INDNS	2027
ROSE, K	AMOCO	1972
UNDERWOOD, W	AWEST	1960C
BHOJWANI, C	TYROS	1952
STOLTZ, B	TYROS	1949

MOST IMPROVED PLAYERS

HOWARD, W	PSTOF	133
BERNARD, D	CRT	126
RAFACZ, T	ROCKW	103
FRIESEMA, W	CRT	92
SATTERLEE, D	JCASE	88
KALE, S	JCASE	82
EUSTACE, D	INDNS	82
BLOOM, B	EXMPL	81
DENG, J	CRT	78
OSTERLUND, R	EXMPL	74

NAME	TEAM	W	L	D	RATING	NAME	TEAM	W	L	D	RATING
ADAMI, S	UOP	1	0	0	0000?	CHEVERESAN, S	UOP	3	0	0	1415C
ALMAZAN, S	NORTH	0	2	0	1344#	CHIU, H	KNGHT	1	0	0	1653*
ALONSO, G	INDNS	1	1	0	0000?	CHOUDRY, A	KEMPR	0	0	1	0000?
ANDERSON, CJ	ROYLS	2	3	1	1293*	CHRISTIAN, R	DRGNS	0	0	0	1843C
ANGLIN, B	SEARS	0	0	0	1684*	CIBA, F	SEARS	1	0	0	1406
ATKINSON, J	AMCRP	3	3	2	1830	CIESLEK, D	MTRLA	5	1	0	2044
AUGSBURGER, L	MTRLA	4	1	0	1799	CIMMARRUSTI, A	CRT	1	1	0	0000?
AUSTIN, R	ROYLS	0	4	1	0000?	CISKO, G	FERMI	4	1	1	1473#
BAKER, B	FLPRO	2	3	0	1073	COLE, P	FERMI	1	0	0	0000?
BAKER, LR	MERC	3	2	0	1144#	COOPER, B	WASTE	0	3	0	0000?
BARGERSTOCK, D	CRT	0	0	1	1945	COOPER, W	PSTOF	3	2	2	1706
BARRON, L	MERC	0	0	0	0000?	COTE, J	MERC	1	6	0	1316*
BAURAC, D	KNGHT	1	1	0	1660C	COX, M	ALUMN	3	0	2	2020C
BEARD, G	ALUMN	0	1	1	1805	CREWSE, L	EXMPL	0	0	0	2066
BECKLEY, S	DRGNS	1	0	2	1448*	CROWE, R	ROYLS	0	3	2	1377*
BENEDEK, R	KNGHT	1	0	1	2221D	CUMMUTA, P	KEMPR	0	2	0	1370
BENESA, A	FRANK	3	0	1	2179	CUSI, R	FRANK	1	0	1	2437
BENTLEY, D	COLUM	1	3	0	0000?	CZERNIECKI, A	ALUMN	2	2	2	2232C
BERNARD, D	CRT	5	1	1	1365*	DAVIDSON, M	ALUMN	3	0	0	1655*
BERRY, G	KNGHT	2	2	1	2075D	DAWSON, J	KNGHT	1	0	1	1412
BHOJWANI, C	TYROS	3	1	0	1952	DECMAN, S	KNGHT	2	2	0	1785C
BHOJWANI, R	INDNS	1	5	0	1710*	DENG, J	CRT	6	1	1	1632*
BISH, D	NORTH	0	1	0	0000?	DEWITT, G	ROCKW	2	2	0	1394C
BLACKMON, E	INDNS	1	1	2	1717	DEZONNO, T	ROCKW	2	3	0	1124#
BLAZIE, J	TYROS	2	1	2	1817	DIAZ, P	NORTH	3	3	0	1967
BLOEDOW, P	KEMPR	1	3	0	1476C	DOBR, K	CHRGR	5	0	2	1589D
BLOOM, B	EXMPL	5	0	0	2088	DOBROVOLNY, C	ROYLS	1	3	1	1887
BOLDINGH, E	UOP	4	1	0	2134*	DOWAT, C	FERMI	0	0	0	1496
BOOKER, G	RADIO	0	2	0	1401#	DUNCAN, T	MTRLA	2	2	0	0000?
BRADY, R	CHRGR	2	1	0	1328*	DURKEE, D	DRGNS	3	3	0	1755C
BRANCH, Y	COLUM	2	6	0	1350#	DYCKOWSKI, R	CONBK	2	3	2	1637*
BRIONES, M	UOP	0	1	0	1694C	EASTER, R	MTRLA	2	1	0	2106
BROCKETT, M	SEARS	1	0	1	1772	EDWARDS, S	EXMPL	0	1	0	1241
BRONFELD, A	ALUMN	2	0	1	1811	EFRON, D	ROCKW	1	1	0	1555
BROTSOS, J	ALUMN	3	1	0	1581D	ELEK, G	NORTH	0	3	1	997*
BROWN, R	INDNS	0	1	0	0000?	ELIASOFF, D	WASTE	0	2	0	0000?
BROWN, S	MERC	0	0	0	0000?	ELLERY, G	RADIO	1	3	0	1487*
BROZOVICH, J	TYROS	1	1	2	1758C	ERLENBORN, M	AWEST	1	0	0	1456*
BUCHANAN, R	ALUMN	2	0	1	1464C	EUSTACE, D	INDNS	3	3	0	1428
BUCHNER, R	INDNS	0	0	0	2027	FABIJONAS, R	EXCAL	0	0	0	1785D
BUERGER, E	UOP	1	2	0	2052D	FELDMAN, A	FLPRO	1	4	0	1425
BURIAN, D	NORTH	2	2	1	1683	FIGUEROA, A	UOP	0	1	0	0000?
CAMPBELL, C	AMCRP	0	0	0	1186	FILICHIA, T	KEMPR	0	0	0	0000?
CAMPBELL, D	AMOCO	0	0	0	0000?	FIPPINGER, P	WHEAT	0	0	0	0000?
CARTER, D	JCASE	1	1	0	1078*	FLYNN, T	INDNS	0	4	0	0000?
CARTER, L	PSTOF	4	3	0	1528	FOLEY, T	INDNS	1	0	0	0000?
CEASE, H	FERMI	1	1	0	0000?	FRAATS, D	CONBK	2	1	1	1885
CELANDER, C	COLUM	0	2	1	0000?	FRANEK, M	ALUMN	4	1	0	1864
CHAN, H	SEARS	1	1	3	1551	FRANK, M	MERC	2	5	0	1735*
CHARKOVSKY, R	ALUMN	2	1	1	1678*	FRIESEMA, W	CRT	8	0	0	2074

? - UNRATED

- 5 TO 9 RATED GAMES

* - 10 TO 24 RATED GAMES

C - CENTURY CLUB MEMBER

D - DOUBLE CENTURION

NAME	TEAM	W	L	D	RATING	NAME	TEAM	W	L	D	RATING
FRISKE, T	EXCAL	0	0	0	1843	JASAITIS, A	CRT	4	2	2	2163
GAINES, I	FERMI	3	0	0	1771C	JONES, B	ROCKW	0	0	0	2149
GAMEZ, M	JCASE	0	0	0	0000?	KALE, S	JCASE	5	2	0	1532*
GASTON, K	JCASE	1	3	1	0000?	KALIHHER, C	FERMI	0	0	0	1903
GAVIN, L	MERC	1	1	1	1228	KANAS, W	JCASE	1	2	0	1262
GAZMEN, E	FRANK	4	1	0	2207	KASSELBAUM, J	COLUM	0	1	0	0000?
GELBART, S	SECST	0	0	0	2272	KELLOGG, K	KNGHT	0	0	0	1675C
GIBSON, K	AMCRP	0	0	0	0000?	KELLY, S	DRGNS	3	4	0	1308
GILES, M	SEARS	0	0	0	2430	KLINEFELTER, H	JCASE	3	3	1	1509
GLICENSTEIN, J	FERMI	2	0	4	1901	KOEPELE, J	TYROS	0	0	0	0000?
GOLLA, R	SEARS	4	3	1	2017C	KOGAN, G	CONBK	1	7	0	1739*
GOLUMBOVSKI, P	NORTH	0	2	1	2103*	KOSTECKA, K	COLUM	0	7	1	1501
GONCHAROFF, N	MTRLA	3	0	1	1778D	KOZLOVSKY, M	FERMI	1	1	1	2256*
GRAFT, D	AWEST	0	0	3	1835	KRAKAU, H	EXMPL	0	0	0	1962
GREEN, D	KNGHT	3	0	0	1836C	KRULL, E	AMCRP	1	3	1	1362*
GREGORY, J	PSTOF	1	2	0	2117	KUKES, S	AMOCO	0	0	0	2326#
GRIEB, S	KEMPR	0	1	0	0000?	KUMRO, D	CHRGR	1	5	1	1661D
GROTANS, G	MERC	0	0	0	1258*	LAMBIRIS, J	KEMPR	0	1	0	0000?
GRYPARIS, J	MTRLA	2	1	0	1379	LANG, P	KEMPR	0	1	0	0000?
GUILLEN, B	KEMPR	2	2	0	1392#	LASKY, J	RADIO	1	2	0	1407
GUIO, J	ROYLS	4	0	1	2226	LASKY, JIM	RADIO	0	0	0	1712#
GUTNIK, I	JCASE	0	0	0	0000?	LASKY, N	RADIO	2	2	1	1472
HAHNE, D	ROYLS	3	1	1	1612	LATIMER, E	SEARS	4	1	3	2016D
HAMILTON, L	AMCRP	4	2	1	1416*	LEE, R	TYROS	0	0	0	0000?
HAMMOND, M	CONBK	1	0	0	1354*	LEMPA, K	SECST	0	0	0	1524*
HAMPER, P	AMCRP	1	3	0	0000?	LENDI, L	WASTE	0	1	0	0000?
HARBUZIUK, W	ROCKW	0	0	1	0000?	LEQUERE, F	KNGHT	3	0	1	1611
HARRIS, F	SEARS	0	0	0	0000?	LESTER, M	MTRLA	0	0	0	1588
HARRIS, R	FERMI	4	1	0	1554	LEVINE, D	KNGHT	1	0	0	2398
HERMANN, T	WASTE	0	2	0	0000?	LITVINAS, A	ALUMN	3	2	1	1731C
HERNANDEZ, D	MTRLA	0	0	0	1462	LODER, S	INDNS	0	0	0	0000?
HERNANDEZ, DD	COLUM	0	0	0	0000?	LORING, S	CONBK	1	0	0	2015
HESS, B	FLPRO	0	5	0	1512	LOSOFF, A	CRT	3	2	1	1973
HICKS, C	ROYLS	2	0	0	1511	LUDWIG, T	INDNS	3	2	1	2133
HILL, R	KNGHT	3	0	1	1675	MANILLA, M	AMOCO	3	2	0	1225#
HILLIARD, J	CONBK	0	0	0	0000?	MARCOWKA, R	PSTOF	3	1	1	2020C
HILTON, J	MERC	0	2	0	0000?	MCALISTER, K	COLUM	3	4	1	1881
HODINA, J	AMCRP	4	3	0	2073	MCCLOUD, E	INDNS	0	2	0	0000?
HOLM, B	WASTE	0	3	0	1716	MCFARLIN, B	KEMPR	0	0	0	0000?
HOWARD, W	PSTOF	5	2	0	1310*	MCGRIFF, M	RADIO	2	1	0	1416
HUGHES, N	KEMPR	0	0	0	1825C	MCINTOSH, S	CONBK	1	2	0	1164#
HUMPF, R	RADIO	0	1	0	1293*	MCPHAIL, C	TYROS	1	1	0	0000?
HUNG, N	MTRLA	0	1	0	0000?	MCQUINN, J	ROCKW	1	2	0	1515
HUTTAR, C	SECST	0	0	0	2016	MCSMITH, B	COLUM	0	1	0	0000?
INUMERABLE, F	PSTOF	3	1	2	2227	MICKLICH, F	UOP	2	4	0	1765C
ISAACS, D	WASTE	0	3	0	0000?	MIKULECKY, B	RADIO	1	2	1	1313
JACOBS, N	DRGNS	2	1	3	1942C	MILLER, TT	SEARS	4	1	1	1519*
JADERBERG, J	RADIO	0	1	0	0000?	MIRANDA, V	FRANK	2	0	2	0000?
JAKSTAS, K	NORTH	0	3	2	2154C	MITCHAM, L	ROCKW	0	3	0	1616#
JAMES, V	TYROS	2	1	0	0000?	MOHANTY, K	KNGHT	2	0	0	0000?

? - UNRATED
- 5 TO 9 RATED GAMES
* - 10 TO 24 RATED GAMES

C - CENTURY CLUB MEMBER
D - DOUBLE CENTURION

NAME	TEAM	W	L	D	RATING	NAME	TEAM	W	L	D	RATING
MOKHTAR, M	INDNS	1	0	0	0000?	RIEDERER, D	CRT	1	1	0	1116#
MOLES, J	MTRLA	0	0	0	1209	RINGENBERG, T	AMOCO	1	0	0	1402*
MONZANI, A	FLPRO	0	2	0	1751	RIPPE, D	TYROS	0	0	0	0000?
MOODY, L	CONBK	0	0	0	0000?	RO, D	CRT	1	2	0	1450*
MORGAN, T	MTRLA	0	0	0	0000?	ROGERS, N	PSTOF	0	0	0	1973*
MORRISON, J	KNGHT	1	0	0	1728	ROQUE, P	COLUM	0	1	0	0000?
MORTON, B	SEARS	5	1	2	1598	ROSE, K	AMOCO	1	1	0	1972
MOSES, J	PSTOF	0	3	0	0000?	ROSEN, JJ	FERMI	0	0	0	0000?
MOTYCKA, R	JCASE	0	3	0	1178	ROHING, G	EXCAL	0	0	0	1433
MOYNIHAN, K	MTRLA	2	0	1	2228	ROSKO, D	SEARS	0	0	0	0000?
NELSON, H	CONBK	0	1	0	1960	ROSLEY, D	ROYLS	0	0	1	1816
NELSON, R	WHEAT	0	0	0	0000?	RUDDY, J	MERC	0	5	1	1222*
NWABUDE, O	ROYLS	0	1	0	0000?	RZESZUTKO, R	ALUMN	0	1	2	1952
O'DELL, DW	RADIO	0	2	2	1626	SAHLI, E	UOP	3	0	1	0000?
OELHAFEN, A	EXMPL	0	1	0	1279*	SAJBEL, P	UOP	3	2	0	1683
OGASAWARA, L	ROYLS	1	3	0	1793	SAJKOWSKI, D	AMOCO	3	2	1	1938
OGASAWARA, R	MTRLA	0	1	0	1604D	SAMELSON, C	MTRLA	2	4	0	2022C
OLSEN, A	KEMPR	2	2	1	1464#	SANCHEZ, R	FRANK	1	3	0	0000?
OLUND, P	MTRLA	2	4	0	1389#	SATTERLEE, D	JCASE	3	1	2	1703
OSTERLUND, R	EXMPL	5	0	0	1976	SCHATTKE, N	AMOCO	1	3	0	0000?
OTAKAN, V	FLPRO	0	0	0	0000?	SCHULMAN, R	EXMPL	0	0	0	1925C
PAAUWE, N	AMOCO	0	1	2	1412	SCHWARTZ, M	TYROS	3	2	0	1073#
PALMER, S	COLUM	0	0	0	0000?	SCHWARTZ, S	SEARS	0	0	0	1719C
PAPOUTSIS, G	UOP	0	2	0	0000?	SEEGER, S	WHEAT	0	0	0	0000?
PARA, A	FERMI	4	2	0	1661#	SHAFF, R	TYROS	1	1	0	1561C
PARAOAN, E	CONBK	6	5	1	1767	SHEU, G	ROYLS	1	2	0	1334*
PATEL, R	CONBK	2	2	1	1410*	SHIREY, S	KEMPR	0	2	0	0000?
PETERS, P	EXMPL	0	2	0	1083*	SIEGEL, R	CONBK	2	6	0	1469
PETWAY, L	PSTOF	0	0	0	1471*	SIMS, B	CRT	0	0	0	0000?
PIAO, T	DRGNS	2	1	1	0000?	SIWEK, M	KEMPR	2	1	1	2143
PIASZYNSKI, J	AMOCO	0	1	0	0000?	SKULSKI, I	EXMPL	0	0	0	1838
POLIZZANO, S	WHEAT	0	0	0	0000?	SLUSSER, C	CRT	0	1	0	0000?
POMA, D	AMOCO	4	2	0	1172#	SMILEY, R	AMCRP	4	0	3	2048
POTTS, S	WHEAT	0	0	0	0000?	SMITH, BR	TYROS	3	3	0	1518
POYNOR, D	WHEAT	0	0	0	0000?	SMITH, JM	SECST	0	0	0	1196*
PUECHNER, R	KEMPR	0	0	0	0000?	SOLLANO, E	FRANK	3	2	0	2013
PULTS, J	AMOCO	0	0	0	1814*	SOMBONG, M	CONBK	0	2	0	1725
PYLES, C	WHEAT	0	0	0	1294#	SOPRYCH, T	AMCRP	0	0	0	1620C
RADAVICIUS, E	CHRGR	2	2	2	1711C	SPIEGEL, L	FERMI	3	0	2	2098C
RADKE, P	COLUM	0	1	0	0000?	STAMM, V	CHRGR	2	1	0	1714D
RADULSKI, R	TYROS	0	0	0	0000?	STEIN, P	AWEST	2	0	1	2236
RAFACZ, T	ROCKW	4	1	0	1709	STELTON, N	AWEST	1	1	0	1373
RAFACZ, W	ROCKW	1	4	0	1633	STEMPINSKI, P	NORTH	0	0	0	1423
REED, L	PSTOF	0	0	0	1737#	STEVANOVIC, M	UOP	4	1	1	2257C
REHORST, R	FLPRO	0	0	1	0000?	STINSON, M	INDNS	0	0	0	2028
REICHERT, P	NORTH	1	0	1	0000?	STOLTZ, B	TYROS	2	2	1	1949
REID, C	JCASE	2	2	0	1278	STUHLBARG, D	UOP	1	1	0	1500C
REID, D	MERC	0	0	0	0000?	SUERTH, F	EXMPL	2	1	2	1607
REVULURI, K	MTRLA	1	1	0	0000?	SUH, G	AMOCO	1	2	1	1462#
REYES, R	SEARS	6	0	1	2324C	SULLIVAN, C	MERC	0	7	0	1575*

? - UNRATED
- 5 TO 9 RATED GAMES
* - 10 TO 24 RATED GAMES

C - CENTURY CLUB MEMBER
D - DOUBLE CENTURION

NAME	TEAM	W	L	D	RATING	NAME	TEAM	W	L	D	RATING
SULLIVAN, J	EXMPL	3	2	1	2035D	WARD, C	DRGNS	2	4	1	1565D
SWIDERSKI, M	CHRGR	0	0	1	1353C	WARREN, J	CHRGR	5	2	0	2166D
SZAUKELLIS, W	MTRLA	3	2	0	0000?	WEARY, M	MTRLA	3	1	0	0000?
TATARSKY, J	KEMPR	0	0	0	1435#	WEBER, L	FRANK	3	1	0	2296
TAYLOR, F	WHEAT	0	0	0	1214*	WEISNER, T	RADIO	0	0	0	1142
TEGEL, F	DRGNS	4	2	1	2110D	WEITZ, R	FLPRO	0	4	0	1814C
THOMAS, G	TYROS	3	0	0	1483	WENTLING, C	AMCRP	3	3	0	1536
THOMAS, J	CHRGR	2	3	0	1520C	WEST, R	MTRLA	0	1	0	0000?
THOMPSON, R	FLPRO	1	2	0	1080	WHITE, H	JCASE	1	6	0	1687
TOLPPI, J	WASTE	0	2	0	0000?	WHITSITT, S	DRGNS	0	0	0	1571*
TROPP, W	TYROS	0	0	0	0000?	WIECHERT, A	UOP	0	2	0	0000?
TRUSNICH, M	WASTE	0	1	0	0000?	WIENS, P	WHEAT	0	0	0	1387
TUKES, W	COLUM	0	1	0	0000?	WILLIAMSON, A	PSTOF	1	0	0	0000?
TURNER, R	COLUM	1	7	0	1288#	WINGFIELD, L	INDNS	0	0	0	0000?
TURPIN, S	INDNS	0	1	0	1196#	WINSTON, H	ALUMN	1	0	0	1998
UNDERWOOD, W	AWEST	1	1	1	1960C	WIRTSCHAFTER, D	ALUMN	0	0	0	2109
VAN MEER, J	KEMPR	1	0	0	1929	WITHERIDGE, T	WASTE	0	1	0	0000?
VAN ZILE, C	UOP	2	1	0	1357#	WONG, P	EXMPL	1	2	1	2179C
VELAYUTHAM, S	TYROS	0	0	0	1305#	YOUNG, C	KNIGHT	4	0	0	1979C
VERIVE, J	AWEST	0	0	1	1603#	ZAROMB, S	KNIGHT	0	0	0	1480
VIGANTS, A	NORTH	1	2	2	1619	ZEFF, T	SEARS	0	0	0	0000?
WALHOUT, P	WHEAT	0	0	0	2088	ZEIDEL, J	MERC	0	1	0	1956
WALKER, R	FERMI	0	1	0	1376C	ZIMMERMAN, T	TYROS	0	0	0	0000?
WALLACH, C	MTRLA	2	1	0	2058	ZOELLNER, J	CONBK	1	3	1	1206
WALLIN, R	AWEST	1	2	0	1720*						

? - UNRATED
- 5 TO 9 RATED GAMES
* - 10 TO 24 RATED GAMES

C - CENTURY CLUB MEMBER
D - DOUBLE CENTURION