

Chicago Industrial Chess League

Bulletin 3, Volume 35

November, 1991

INSIDE THIS ISSUE:

Match Results

Annotated Games by:

Tony Jasaitas

Richard Smiley

Jim Hodina

FISHER vs PUTO

The Story at Last!

2 Squares Column

By Marv Cox

CICL Ratings List

NEED INPUT! To make the CICL bulletin even better, we are looking for anyone interested in submitting articles or games. If you are interested, call or write to the bulletin editor.

-Bulletin Editor - James Hodina

Home: 708/799-5571

Work: 312/856-2762

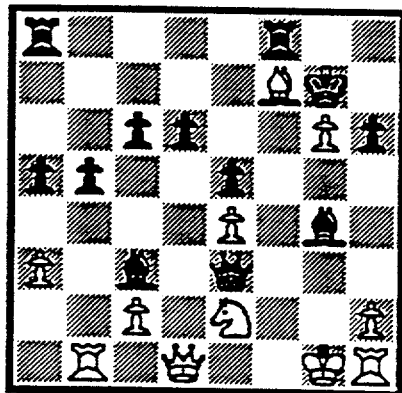
Fischer vs. Puto is not a game you'd find in any book. But this infamous game's final position has appeared on the CICL match results sheet for the past ten years. Well thanks to CICL's own Russ Rzeszutko, the score to this game has been resurrected. The game is from a 50 player "simul" in which Mr. Puto, a CICL alumni, was the only player to notch a victory against the then reigning U. S. Champion. The score, originally published in "Chess Review," August, 1964, pg. 264, is given below for both posterity and the intrigued.

VIENNA GAME

W: Robert Fischer, US Champion
B: Erwin Puto

Simultaneous Exhibition, 1964

1.P-K4, P-K4 2.N-QB3, N-QB3
3.B-B4, B-B4 4.P-B4, N-B3 5.N-B3,
P-Q3 6.P-Q3, O-O 7.P-B5, N-Q5
8.B-KN5, P-B3 9.P-QR3, P-KR3
10.B-R4, R-QN4 11.B-R2, P-QR4
12.P-KN4, P-KN4 13.PxP e.p., BxP
14.BxP+, K-N2 15.NxN, BxN
16.N-K2, BxP 17.R-QN1, B-B6+
18.K-B2, NxP+ 19.PxN, QxB+
20.K-N2, Q-R6+ 21.K-N1, Q-K6+
WHITE RESIGNS



Fischer vs. Puto
May, 1964

SICILIAN DEFENSE

W: Jim Hodina (2066)
B: Florentino Inumerable (2233)

Post Office vs Amoco Corp

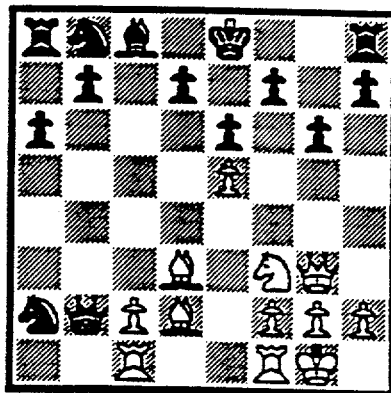
Annotations by Jim Hodina

1.e4, c5 2.Nf3, e6 3.d4, cxd4
4.Nxd4, Nf6 5.Nc3, Bb4 John Nunn
calls this line the Pin Sicilian. It goes
straight after White's center, however,
as this game shows, it can leave
Black with serious dark square
weaknesses.

6.e5, Nd5 7.Qg4 One of two main
alternatives with 7.Bd2 being the
other. After 7.Qg4, Black usually
follows with 7...O-O 8.Bh6, g6 9.Bxf8,
Qxf8 and Black returns to the center
and Queenside with good counterplay
for the exchange. In the game Black
chooses instead to maintain the
material balance.

7... g6 8.Qg3, a6 9.Bd2, Qb6
10.Nf3, Bxc3?! Removing a piece
from play on Black's already weak
dark squares. While this begins a
combination which wins material,
Black has further weakened his dark
squares; a permanent weakness
White can exploit with his lead in
development.

11.bxc3, Qb2 11.Rc1, Nxc3
12.Bd3, Nxa2 13.O-O!



After 13.O-O!

Black is now forced to trade off

another developed piece. 13... Nxc1
14. Bxc1, Qc3. White has fully
completed his development while the
Queen is Black's only piece not on its
original square. True, White is down
two pawns and the exchange, but
Black never has time to complete his
development and realize his material
advantage. This may be apparent
now, but not necessarily at move 10
when Black committed to this plan.

15. Ng5! Creating immediate threats
on the f pawn with 16.Nxd7, Kxf7
17.Bxg7+ and the discovered attack
on the Black Queen.

15... Nc6! Understandably Black
seeks development, but the f pawn
and subsequent placement of White's
knight is too steep a price. Black
may have better prospects by playing
15... Rf8 first and returning material
by 16.Nxh7, Nc6 17.Nxf8, Kxf8 18.f4
although White still has the initiative
due to his superior development and
Black's exposed King. In particular
White is threatening an immediate
19.f5 and if 18... Nd7 then 19.Qf2
followed by g4 appears strong.

16.Nxf7, O-O. Black can also play
16... Rf8, but his king is no safer in
the center than in the corner; i.e.
16...Rf8 17.Nd6+, Kd8 18.Bh6, Rg8
(remaining on the f file and giving
back the exchange is no good as the
White Queen and bishop pair mop
up) 19.Be3! and the e pawn is
immune while White carries out his
attack; 19... Qxe5 20.Nf7+ or 19...
Nxe5 20.Bb6+, Ke7 21.Qg5+, Kf8 22.
Qf6+ with mate in one. This leaves
19... Kc7 which is readily met by
20.Rb1 with the following possibilities;
20... Nxe5 21.Ne4 and the black
knight hangs; 20... Qxe4, 21.Bf4, Qd5
22.Ne8+, Kd8 23.Nf6 followed by
24.Bc7+, Ke7 25.Ng8+; 20...Kb8
21.Bxa6, Rxa6 22.Ba7+, Rxa7
23.Qxc3 and White's pieces are much
better placed; other moves are met
by the plan of 21.Bb6+, Kb8 22. Qe3
with the idea of 23.Bc7+, Kxc7
24.Qb6+, Kb8 25.Nxc8, Kxc8
26.Qxb7+, Kd8, 27.Qxa8+, Ke7

28.Qxg8.

17.Nh6+, Kh8 18.Ng4 Ne7
19.Qh4, Qb4 20.Bg5, Nd5 (20....Nf5
loses to 21.Bxf5, exf5 22.Bf6+, Rxf6
23.Qxf6+, Kg8 24.Nh6+, mate).

21.Bxf6, Rf7 22.Bxf7, Kg7 23.Bf6+,
Kxf7 24.Qxh7+, Ke8 25.Qg6+, Kf8
26.Nh6, Qe7 1-0.

SICILIAN DEFENSE

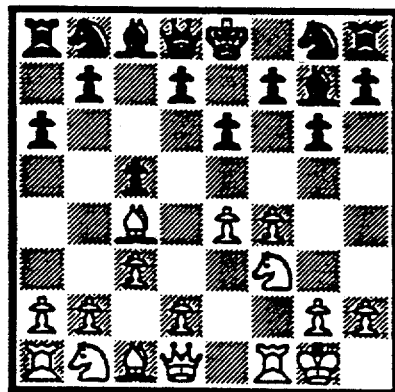
W: Nik Goncharoff (1776)

B: M. Briones (1706)

Motorola vs. UOP October 24, 1991

Annotations by Jim Hodina

1.e4, c5 2.f4, e6 3.Nf3, g6 4.Bc4,
Bg7 5.O-O, a6 6.c3,



After 6.c3

6...., b5?! 6...., d5 is more accurate,
taking advantage of White's last move
which left a hole at d3. Since the
bishop must retreat either
immediately or after the pawn
exchange, Black can follow up with
d5 and may be prefaced by Nc6.

This queen pawn thrust is a very
effective technique in neutralizing
White's attempt to amass a large
pawn center and can be applied in
many openings situations. Another
popular application of this pawn
thrust is from the White side of an
English where Black often tries to
prepare d5 with c6. A quick example
would be 1.c4, e5 2.Nc3, c6 3.d4,
exd4 4.Qxd4 and the queen is not

forced to retreat by 4...., Nc6 since
the c6 square is occupied by the
pawn.

7.Be2, Nf6. 7...., Ne7 leaving the
a1-h8 diagonally open is more
thematic with 2...., e6.

8.e5, Nd5 9.d4, d6 10.dxc5, dxc5
11.c4, bxc4. Better is 11...., Qb6
aiming at d4 and supporting the
queenside pawns.

12.Bxc4, O-O 13.Qb3, Nb6 14.Rd1,
Qc7 15.Be3, Nbd7 16.Nbd2, Bb7
17.a4, a4 18.Qc2, Rfd8 19.b3, Bf8
20.Qac8, Nd5 21.Bxd5, exd6
22.Nd4, Qb3 23.Nb5, d4? Fixing his
center pawns when the flexible pawn
duo c5 and d5 is much stronger.
23...., Bc6 hitting the knight on b5 is
more accurate.

24.Be2, Rac8? 25.Nc4, Qc6
26.Bh4, Qa6 27.Bxd8, Rxd8 28.Qd2,
h5 29.Qxa5, Qc6 30.Qd2, h4 31.Na5,
Qd5 32.Nxb7, Qxb7 33.Qf2, Be7
34.h3, g5 35.Rf1, Qd5 36.Qf3, Qxf3
37.Rxf3, gxf4 38.Rxf4, Bg5 39.Rg4
1-0.

RETI OPENING

W: Robert Marcowka (2012)

B: Richard Smiley (2002)

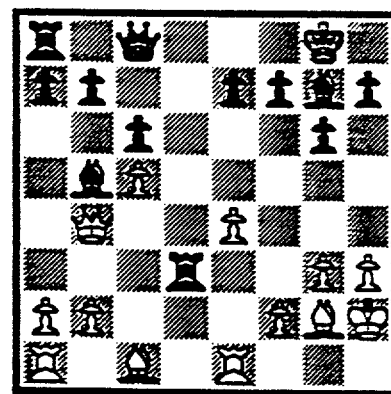
Post Office vs Amoco Corp

Annotations by Richard Smiley

1.g3, Nf6 2.Bg2, g6 3.Nf3, Bg7
4.O-O d5 5.c4, c6 6.Qc2, O-O 7.d3,
Be6 8.h3? This move both wastes
time and allows me the chance to
develop my pieces while attacking the
white queen.

8...., Qc8 9.Kh2, dc 10.dc, Bf5
11.Qa4? Here the queen becomes
an easy target.

11...., Nbd7 12.Qa3, Nb6! 13.Nbd2,
Be6 14.Qc5, Re8 15.Ne5, Nfd7
16.Nxd7, Nxd7 17.Qa5, Ne5 18.c4,
Nc4 19.Nxc4, Bxc4 20.Bf3, Rd8
21.Qb4, Bd5 22.e4, Be6 23.Bg2,
Rd4 24.Qa3, Bc4 25.Re1, Rd3
26.Qb4, Bb5.



After 26...., Bb5

Threatening to trap the queen with
27...., a5. My opponent finds a good
way to eliminate the threat, but I am
far ahead in space and development.

27.e5!, Qd7 28.a4, Rd4 29.Qb3,
Bc4 30.Qc3, Ba6 31.f4, Rd3 32.Qc2,
Qd4? A horrible move which loses
two tempi and lets his bishop out!
Simply 32...., Rb8! putting more
pressure on the file is in order. What
was I thinking?

33.Re4, Qd7 34.Be3, Rd8 35.Re1,
Rd1 36.Rxd1, Qxd1 37.Qf2, Qb3
38.Bf3, Bc4 39.a5? This move hangs
a pawn outright which was already
protected (39...., Qxa4 40.Be2).

39...., Qb5 40.Bd4, Bd5 41.Be2,
Qxa5 42.Bc3, Qa1. Now losing an
exchange due to the mate threat on
h1. Now I am in time trouble and my
opponent goes on a speculative
binge.

43.Qe3, Bxe4 44.Qxe4, Rd5
45.f5!, Rxc5 46.e6, Bxc3 47.ef+,
Kf8 48.f6, Re5 49.fe+, Kxe7?
Capturing on f7 first eliminates the
chance for Qxh7 to be played with
check.

50.Qh4+, Kxf7 51.Qxh7+, Kf6
52.Qh8+, Ke7. My plan here is to
stay on the dark squares (not
allowing the bishop to get into the
attack) and work my way over to b6.

53.Qg7+, Kd6 54.Qf8+, Kc7
55.Qf7+, Kd6? But here I chicken
out when 55...., Kb6 works. If
56.Qb3+ then Rb5! will consolidate
into a won endgame.

58.Qf8+, Kd5 57.Qf3+, Ke6

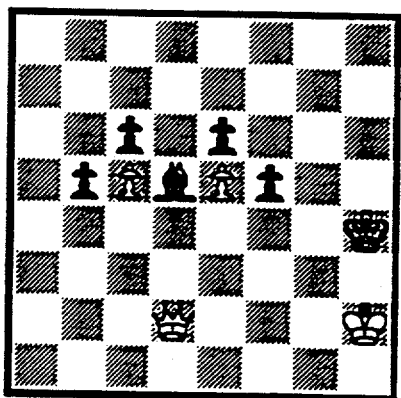
58.Bc4+, Rd5? I still could have gone to d6 and worked my way over to b6.

59.Qg4+, Kf6 60.Qf3+, Kg7 61.Qxc3+, Kh7 62.Bxd5, cd. Draw. After 63.Qc7+ and 64.Qxb7 the game is equal.

THE 2 SQUARES COLUMN

By Marv Cox

"If three squares are attacked more time than they are defended they may fall."



White to Play and Win

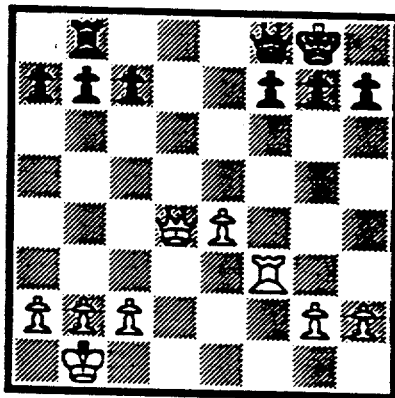
Squares c8 and e8 are potential queening squares for White. Queening is prevented by black pawns on c6 and e6. The same black pawns guard the black bishop on d5 which is attacked by the white queen. Therefore, White has three attacks against c8, e8, and d5. Black has only two guards, namely the pawns on c6 and e6.

1.Qxd6, Resigns.

It should be noted White could have won by slowly and laboriously forcing the black king into the corner and mating him. Try it if you can waste a fair amount of time. My uncle says, "Shoot your opponent in the heart if you can. Don't chase him two miles in order to slowly strangle him after

you do catch him."

"If two squares are attacked more times than they are defended they may fall."



Black to Play

My uncle (White) had just moved his queen from d1 to d5 and I (Black) was licking my chops in anticipation of a quick win.

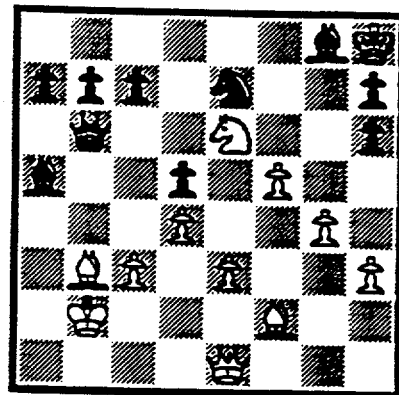
1...., Rd8. If my uncle moved his white queen I would mate him. And if he didn't move his queen he would lose it. Ah! What a beautiful finish. My uncle muttered to me, "You forgot the two-squares," and made his move.

2.Rxf7. I went into shock when I realized I had a lost game instead of a quick win. He'd outfoxed me again.

2...., Rxd5 3.Rxf8+, Kxf8 4.exd5. Uncle was a pawn up. From that point it was just a matter of technique.

Let's go back to the original diagram. Squares d8 and f7 are attacked by White's queen and rook and guarded by Black's queen only. The black rook is not a guard because it is on one of the squares under attack. The black king is not an effective guard because it cannot capture into check. Two attacks, one guard, the two-squares may fall. And they did...resoundingly.

"If two squares are attacked more times than they are defended they may fall."



Black to Play

My uncle (black) had just moved his queen to b6. As I looked at the position I concocted a diabolic plan. If I captured the black pawn on c7 with my white knight from e6 his black queen would recapture on c7. Then if I moved my white bishop to g3 my uncle would have to give up his queen to prevent mate. Ah! I was finally going to beat the old boy. Ah!

1.Nxc7, Qxc7 (He fell for it!) 2.Bg3, Bxc3+ (I didn't expect that) 3.Qxc3, Qxg3. He did it to me again!

Let's go back and look at the position after white's second move. The squares c3 and g3 are attacked twice by Black's queen and king. However, the king is not really a guard because it can not capture into check. So Black has two attackers and White's only one defender. The two squares may fall and did.

My uncle said, "I love the way you build a snare, trigger it, and then trap yourself in it."

Submission for Best Attack

Notes by Tony Jasaitis and J. Deng

Closed games with many immobilized pawns require special treatment that may violate principles that the student has learned, such as: don't make pawn moves that weaken or open your castled position; centralize your pieces, etc.

I have used this game as a vehicle for instruction on several chess themes: whether one should move a rook's pawn in the opening; how to exploit a target in a castled position; when to open one's own castled position to conduct an attack; techniques to defuse a pawn storm; and comments on B vs N as well as trading pieces. - TJ.

KING'S INDIAN DEFENSE

White: W. Cooper (1678)

Black: J. Deng (1554)

Post Office vs. CRT - October 16, 1991
Board 4

1.d4, Nf6 2.c4, g6 3.Nc3, Bg7
4.Nf3, d6 5.e4, O-O 6.Bd3.

This straightforward placement of the bishop seems to never occur in master practice, being normally developed at e2. Considering how Black's play normally develops in the King's Indian Defense, Bd3 has the following disadvantages:

a) Black often plays c6, weakening his d-pawn. Bd3, blocking the file, makes it safer for Black to do so.

b) After White trades pawns on c6, one of Black's options is to try to play the freeing d5. Again, the blocked file makes it easier for Black to do so.

c) After White's d-pawn moves, Black's typical placement of a N on c5 will attack the Bishop.

d) When Black gets to play his typical f5 (or even d5), White could

be in danger of getting the KB and KN forked by a Black pawn

Because of all this, it is typical for White to play the following sequence: Be2, O-O, Re1, and finally Bf1 when the e-pawn needs additional support. While such a development does not match the principles for a more open game, it solves the problem of what to do with a piece that does not have a lot of future until much later in the game by getting it out of the way, and letting more suitable pieces "breathe." The B often comes in handy for defense. A similar treatment of the B occurs by Black in the Closed Ruy Lopez.

6...., Nbd7 7.Be3. White normally precedes Be3 with h3. Why make such a pawn move here, when general opening principles call for rapid piece development? Again, closed positions call for a modification to this rule. Such a move is often justified if it restricts the opponent's mobility, and/or takes away the only good square the opponent's piece would have. Again, this is similar to the Closed Ruy Lopez. A disadvantage of h3 is that the pawn can become a target of an attack, as happens later in the game. Now Black gets a chance to get in the counter-attacking f5 quicker than normal.

7...., Ng4 8.Bd2. Another principle is that other things being equal, one should prefer a B over N in open positions. This position is not yet closed. If Black could get a B for his N, he could trade pawns in the center and otherwise strive for opening of diagonals.

Even if White already had played d5, his N's wouldn't have any potential for good outposts (compare to Black's N after move 17).

8...., e5 9.d5, c6. Black could have jumped at the chance to play f5 after 9... Nc5.

10.Qc1, Nc5 11.Bc2, Qb6. With the subtle threat of 12 ... Nxf7! followed by Nd3+.

12.O-O, Nf6? Black is drifting. It was not too late to play the thematic f5.

13.Bg5, Qc7. Black feared the potential of Be7. He could have at least played a5 first, the normal way of securing the outpost N at c5.

14.b4, Ncd7 15.Rd1? Black's unwinding of his gains gives White a second chance to get back to some of the normal themes in this opening, such as Black's weak QP. He should have played cxb6 first to make sure the file stays open, although Black could consider recapturing with the Q to create counter-pressure on White's pawns. This seems to be a better plan for White than what follows in the game, where Black springs back again, partially due to White's awkwardly placed pieces.

15...., c5. Black decides to slow down White's Q-side attack with a blockade. An alternative is to open up the game with an attempt to win a pawn: 15. ... cxd5 16. Nxd5 Qxc4 17. Bxf6 Nxf6 [Bxf6 18. Ba4!] 18. Nxf6+ Bxf6 19. Rxd6 Be6 20. Qb2 Rac8 21. Rc1! and White keeps the material even, but Black has the initiative.

16.Nb5, Qb6 17.bxc5. This creates an ideal position for Black's N, one that cannot readily be driven away by pawns or other pieces. Such a N is often worth more than a B, even in an open position. Also, White's c-pawn becomes backward, and thus a potential target on the open file. The alternative 17. b5, is not that attractive either. Although White gains space on the Q-side, it will be hard to do anything with it. Black should be able to avoid open lines by not pushing either pawn until White pushes a pawn to the 6th rank, then bypassing it with a blockade. Black would then have the remaining attacking chances in the game, on the K-side. (Generally wing expansion works best on the side where the center pawns have already advanced the furthest). And 17. a3 can be answered with a5.

17...., Nxc5 18.Bxf6. White should pin and/or eliminate the more active N at c5 instead.

18...., Bxf6 19.Rb1, Bg4 20.Qe3, a6 21.h3. An alternative to this weakening move would be to unpin the rook (after saving the QN) by doubling on the b-file, then playing Ne1-Nd3. White's N wasn't doing anything useful anyway at f3. It is often a good idea to trade a less active piece for an opponent's more active one. Black's bishop would be left biting on thin air, and in the way of a pawn storm.

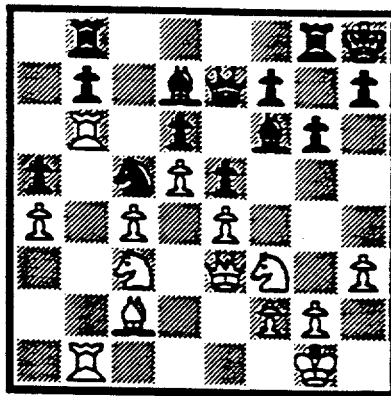
21...., Bd7. Stronger is 21 ... axb5, resulting in domination of the a-file. Thanks to Black's N, White has no real pressure on the b-file.

22.Nc3, Qd8 23.Rb2, Kh8. At last, both sides have strategies: White will pressure the backward b-pawn; Black will try to use the pawn at h3 as a wedge to open up an attack against the White King.

24.Rdb1, Rb8 25.Rb6?, Qe7. 25...., Bb5!, wins an exchange. White should have looked for a way to trade Black's N, the pillar of the Q-side.

26.a4, Rg8. Black obviously intends g5 next. The student may ask, isn't such a move too risky, and against the principle of keeping the K safe? Well, such a flank attack is often the only choice when action in the center is dead, and the opponent dominates the other wing. A secure center takes most of the risk out of opening one's King (within reason). The center can be secure due to being locked up by the pawn structure, such as here, or it can be secured by far superior piece development by the attacking side. Note that if White's K-side pawns were still all on the 2nd rank, this attack would have little sting, because Black would have a hard time opening lines for his rooks. Nonetheless, the target at h3 need not be fatal, as we will see.

27.a5.



After 27.a5

Instead of allowing open lines against your K, blockade! Nh2! would have been an excellent defensive idea. If then 27 ... g5, 28. g4! h5? 29. gxh5! followed by Bd1, with an iron grip keeping Black from crossing the white squares (29 ...g4?? 30. Qh6++). The N could be rerouted to g3 eventually. A key defensive theme implicit in the Nh2 maneuver is the principle of not allowing the opponent to attack two pieces/pawns at the same time, forcing a trade that opens a line. If White's h-pawn were protected by a B at f1, then he could also consider 27. Ne1 followed by g3, intending to bypass ... g4 with h4, a blockade on the Black squares. The N could then either help out with defense at g2, or challenge the Black N at c5. If White had played 27. Nh2, Black would be best off postponing the K-side attack until a better opportunity, and concentrating on White's backward c-pawn.

27...., g5! 28.Bd1. 28.Nh2 or g4 can still be played, but no longer avoid open lines. If 28. g4! h5! 29. Nh2? hxg4 30. hxg4 Kg7 and Black piles up the heavy guns too quickly on the h-file, but better is 29. gxh5! Bxh3 30. Kh2! with a sharp position. Note how Black uses White's own P/h5 as a shield against attack. Such methods sometimes allow Black to survive pawn storms in the Sicilian.

28...., g4 29.hxg4, Bxg4 30.Nh2. Removing the K from the g-file with

Kf1 would have left Black with plenty of work to still do.

30...., Bg5! Works another piece into the attack.

31.Qe1, Bh3! Increasing the pressure on the K due to 32. gxh3?? Bd2+. Now White should have tried 32. g3, with stiffer resistance than in the game.

32.Qe2?, Bf4 33.g3, Qg5. Somewhat stronger choices are immediately Bxg3 or Qh4.

34.Qf3, Qh4 35.Rxd6. This loses quickly, but 35. Ne2 is also insufficient after ...Bxg3! followed by Nxe4.

35...., Bxg3! 36.Ng4, Bxg4 37.Qf6+, Qxf6 38.Rxf6, Bh4 39.Rd6, Bxd1+ 40.Kf1, Bc2 41.Rbb6, Bxe4 42.Rh6, Bg2+ 43.Ke1, Bg5 44.Rh2, Bf4 45.0-1 Time

RATINGS CHAIRMAN REPORT

I have received two match results from the North Division that could not be rated in this issue of the CICL Bulletin. These were the Kemper-UOP and Motorola-Northrop matches in Round 3. Matches need to be rated in the order that they are played, and I have received neither a result from the Northrop-Kemper match in Round 2 nor information that the matches were played out of the scheduled order.

Team captains of BOTH teams in a match should send me a copy of the match results sheet immediately after the match. This will assure that I receive the result as well as ensure speedy rating and publication of the result. In addition, the home team captain should send a copy of the match results sheet to the Division Chairman, to keep him informed of the situation in his division.

Following are updated schedules for submitting results:

Ratings Deadline -----	Use U.S. mail -----	OK to use fax -----
12/28	11/23 - 12/27	(do not fax)
2/1	12/28 - 1/27	1/28 - 1/31
3/1	2/1 - 2/24	2/25 - 2/28

JOIN THE U.S. CHESS FEDERATION !!

Because the CICL is a USCF affiliate, our members can join the USCF or renew membership at a discount.

WHY JOIN?

Membership in the USCF includes a subscription to Chess Life, one of the world's best chess magazines. It also allows members to play in USCF-rated tournaments and to earn a nationally recognized rating. There is a USCF-rated tournament scheduled almost every week somewhere in the Chicago area, ranging from the Illinois championship down to small local tournaments. USCF members can also purchase books and equipment at discount prices.

WHAT IS THE COST?

One year's USCF membership is \$26.00 (this includes the \$4.00 affiliate discount). To join, send a check made out to the U.S. Chess Federation to:

Charlie Ward
615 S. Lincoln St.
Hinsdale, IL 60521

Be sure to include your full mailing address, including ZIP code. If you are already a member and would like to renew your membership, please also include your membership number and expiration date (printed on the Chess Life mailing label). If you were previously a member but let your membership expire, please provide the approximate expiration date of the earlier membership.

WHAT HAPPENS NEXT?

I will forward your check to the USCF along with a letter certifying that you qualify for the discount. I will also send you a receipt that will serve as a temporary membership card until your permanent card arrives from the USCF.

NORTH DIVISION 11-23-1991

TEAM NAME	W	L	D	GAME POINTS	MATCH POINTS	PCT
MOTOROLA	1	0	1	8.5	1.5	0.750
UOP PROCESS DIV.	1	0	1	7.0	1.5	0.750
EXEMPLARS	0	0	1	3.0	0.5	0.500
FEL-PRO	0	0	1	3.0	0.5	0.500
NORTHROP CORP.	0	1	0	2.0	0.0	0.000
KEMPER INSURANCE	0	1	0	0.5	0.0	0.000
FRANKLIN-WATTS	0	0	0	0.0	0.0	0.000

EAST DIVISION 11-23-1991

TEAM NAME	W	L	D	GAME POINTS	MATCH POINTS	PCT
CHICAGO RES. & TRDG.	3	1	0	15.5	3.0	0.750
AMOCO CORP.	3	0	0	13.5	3.0	1.000
SEARS	2	0	1	13.0	2.5	0.833
CHICAGO POST OFFICE	1	1	1	8.5	1.5	0.500
CONTINENTAL BANK	1	2	0	9.0	1.0	0.333
ALUMNI CENTRAL	1	2	0	7.5	1.0	0.333
COLUMBIA COLLEGE	1	2	0	5.5	1.0	0.333
CHICAGO MERC. EXCH.	0	4	0	5.5	0.0	0.000

NEAR WEST DIVISION 11-23-1991

TEAM NAME	W	L	D	GAME POINTS	MATCH POINTS	PCT
AT&T CHARGERS	2	1	1	15.0	2.5	0.625
BELL LABS DRAGONS	2	1	1	12.5	2.5	0.625
ARGONNE KNIGHTS	2	0	1	11.5	2.5	0.833
A & B RADIO	1	1	0	6.0	1.0	0.500
J. I. CASE	1	1	0	5.0	1.0	0.500
ROCKWELL INT'L	0	1	1	4.0	0.5	0.250
BELL LABS ROYALS	0	3	0	6.0	0.0	0.000

FAR WEST DIVISION 11-23-1991

TEAM NAME	W	L	D	GAME POINTS	MATCH POINTS	PCT
AT&T TYROS	2	0	1	14.0	2.5	0.833
FERMILAB	2	0	0	12.0	2.0	1.000
ALUMNI WEST	1	0	1	6.5	1.5	0.750
BELL LABS INDIANS	1	2	0	7.5	1.0	0.333
AMOCO RESEARCH LABS	0	2	0	2.0	0.0	0.000
CHM WASTE MANAGEMENT	0	2	0	0.0	0.0	0.000

16-OCT-91 CHICAGO POST OFFICE
ROUND 3

1.5 CHICAGO RES. & TRDG. 4.5

BD	RATINGS	SCORE	RATINGS	SCORE
1 INUMERABLE.F	2232 -6	.5	JASAITIS.A	2143 6 .5
2 GREGORY.J	2169 12	1	LOSOFF.A	1996-12 0
3 MARCOWKA,R	2012-16	0	FRIESEMA.W	1996 24 1
4 COOPER,W	1998-30	0	DENG,J	1574 30 1
5 CARTER,L	166-36	0	BERNARD.D	1226 36 1
6 HOWARD,W	1203-30	0	RIEDERER,D	1086 30 1

21-OCT-91 SEARS
ROUND 2

3 CHICAGO POST OFFICE 3

BD	RATINGS	SCORE	RATINGS	SCORE
1 REYES,R	2302 -3	.5	INUMERABLE,F	2226 5 .5
2 GOLLA,R	2034 21	1	GREGORY,J	2181-31 0
3 LATIMER,E	2025-16	0	MARCOWKA,R	1996 16 1
4 MORTON,B	1592 5	.5	COOPER,W	1668 -5 .5
5 CHAN,H	1576-31	0	CARTER,L	1430 31 1
6 MILLER,TT	1543 5	1	HOWARD,W	1173 -5 0

29-OCT-91 COLUMBIA COLLEGE
ROUND 3

1 AMOCO CORP. 5

BD	RATINGS	SCORE	RATINGS	SCORE
1 MCALISTER,K	1868-11	0	HODINA,J	2055 11 1
2 KOSTECKA,K	1504 -2	0	SMILEY,R	2002 2 1
3 TURNER,R	0 0	0	ATKINSON,J	1831 0 1
4 BRANCH,Y	0 0	1	HAMPER,P	0 0 0
5 KASSELBAUM,J	0 0	OF	WENTLING,C	1493 0 1F
6 CELANDER,C	0 0	0	HAMILTON,L	1379 0 1

30-OCT-91 CHICAGO RES. & TRDG.
ROUND 2

4 ALUMNI CENTRAL 2

BD	RATINGS	SCORE	RATINGS	SCORE
1 JASAITIS,A	2149 7	.5	CZERNIECKI,A	2258 -5 .5
2 LOSOFF,A	1984 15	1	FRANEK,M	1871-15 0
3 FRIESEMA,W	2020 11	1	BEARD,G	1833-11 0
4 DENG,J	1604 33	1	LITVINAS,A	1788-33 0
5 BERNARD,D	1262 21	.5	BRONFELD,A	1831-21 .5
6 RO,D	1502-14	0	DAVIDSON,M	1641 14 1

04-NOV-91 CHICAGO MERC. EXCH.
ROUND 3

0 SEARS 6

BD	RATINGS	SCORE	RATINGS	SCORE
1 ZEIDEL,J	1956 0	OF	REYES,R	2299 0 1F
2 FRANK,M	1733 -6	0	GOLLA,R	2055 4 1
3 SULLIVAN,C	1606 -4	0	LATIMER,E	2009 3 1
4 COTE,J	1345-11	0	CHAN,H	1545 11 1
5 RUDDY,J	1236 -5	0	MORTON,B	1597 5 1
6 BAKER,LR	0 0	0	MILLER,TT	1548 0 1

12-NOV-91 CONTINENTAL BANK 1.5 AMOCO CORP. 4.5
 ROUND 2

BD	RATINGS	SCORE	RATINGS	SCORE
1 NELSON,H	1960 0	0F	HODINA,J	2066 0 1F
2 FRAATS,D	1843 10	.5	SMILEY,R	2004-10 .5
3 PARAOAN,E	1748-17	0	ATKINSON,J	1831 17 1
4 KOGAN,G	1822-39	0	WENTLING.C	1493 39 1
5 DYCZKOWSKI,R	1696-39	0	HAMILTON,L	1379 39 1
6 HAMMOND,M	1354 0	1	HAMPER,P	0 0 0

14-NOV-91 CHICAGO RES. & TRDG. 5 CHICAGO MERC. EXCH. 1
 ROUND 4

BD	RATINGS	SCORE	RATINGS	SCORE
1 JASAITIS,A	2156 4	1	FRANK,M	1727 -4 0
2 FRIESEMA,W	2031 4	1	SULLIVAN,C	1602 -4 0
3 DENG,J	1637 7	1	COTE,J	1334 -7 0
4 BERNARD,D	1283 0	1	HILTON,J	0 0 0
5 SLUSSER,C	0 0	0	BAKER,LR	0 0 1
6 CIMMARRUSTI,A	0 0	1F		0 0 0F

23-OCT-91 BELL LABS ROYALS 2.5 BELL LABS DRAGONS 3.5
 ROUND 2

BD	RATINGS	SCORE	RATINGS	SCORE
1 GUIO,J	2168 20	1	TEGEL,F	2128-13 0
2 DOBROVOLNY,C	1900 6	.5	JACOBS,N	1989 -4 .5
3 OGASAWARA,L	1858-26	0	DURKEE,D	1800 17 1
4 ROSLEY,D	1830-14	.5	WARD,C	1592 9 .5
5 HAHNE,D	1580-11	.5	BECKLEY,S	1407 11 .5
6 CROWE,R	1424-30	0	KELLY,S	1302 30 1
7 SHEU,G	1330 17	1	ANDERSON,CJ	1241-17 0 (ROYLS)

29-OCT-91 AT&T CHARGERS 5 J. I. CASE 1
 ROUND 3

BD	RATINGS	SCORE	RATINGS	SCORE
1 WARREN,J	2160 2	1	WHITE,H	1752 -4 0
2 KUMRO,D	1702 -3	.5	SATTERLEE,D	1632 5 .5
3 RADAVICIUS,E	1718 -9	.5	KLINEFELTER,H	1478 14 .5
4 DOBR,K	1595 3	1	MOTYCKA,R	1197 -4 0
5 THOMAS,J	1540 3	1	CARTER,D	1081 -3 0
6 BRADY,R	1355 0	1	GASTON,K	0 0 0
(JCASE)				
7 KALE,S	1469 12	1	KANAS,W	1291-12 0

06-NOV-91 BELL LABS ROYALS 1.5 ARGONNE KNIGHTS 4.5
 ROUND 3

BD	RATINGS	SCORE	RATINGS	SCORE
1 GUIO,J	2188 16	1	BERRY,G	2079-10 0
2 DOBROVOLNY,C	1906-19	0	YOUNG,C	1958 13 1
3 OGASAWARA,L	1832-24	0	GREEN,D	1816 16 1
4 CROWE,R	1394 0	.5	LEQUERE,F	0 0 .5
5 NWABUDE,O	0 0	0	HILL,R	1656 0 1
6 AUSTIN,R	0 0	0	MOHANTY,K	0 0 1

06-NOV-91	BELL LABS DRAGONS	5	ROCKWELL INT'L	1	
ROUND 3					
BD		RATINGS	SCORE	RATINGS	SCORE
1	TEGEL, F	2115	2 1	RAFACZ, W	1607 -2 0
2	JACOBS, N	1985	0 1F	MITCHAM, L	1638 0 0F
3	DURKEE, D	1817-22	0	RAFACZ, T	1636 33 1
4	WARD, C	1601	14 1	EFRON, D	1576-21 0
5	BECKLEY, S	1418	30 1	MCQUINN, J	1539-30 0
6	KELLY, S	1332	12 1	DEZONNO, T	1161-12 0

20-NOV-91	BELL LABS DRAGONS	1	AT&T CHARGERS	5	
ROUND 4					
BD		RATINGS	SCORE	RATINGS	SCORE
1	TEGEL, F	2117-13	0	WARREN, J	2162 9 1
2	JACOBS, N	1985	5 1	KUMRO, D	1699 -5 0
3	DURKEE, D	1795-19	0	RADAVICIUS, E	1709 19 1
4	WARD, C	1615-10	0	STAMM, V	1729 10 1
5	KELLY, S	1344	-8 0	DOBR, K	1598 6 1
6		0	0 0F	THOMAS, J	1543 0 1F

23-OCT-91	AMOCO RESEARCH LABS	0	FERMILAB	6	
ROUND 2					
BD		RATINGS	SCORE	RATINGS	SCORE
1	SAJKOWSKI, D	1910-21	0	GLICENSTEIN, J	1934 21 1
2	MANILLA, M	0	0 0	GAINES, I	1749 0 1
3	SUH, G	1445	0 0	PARA, A	0 0 1
4	POMA, D	0	0 0	HARRIS, R	1578 0 1
5		0	0 0F	CISKO, G	0 0 1F
6		0	0 0F	CEASE, H	0 0 1F
(FERMI)					
7	CEASE, H	0	0 0	CISKO, G	0 0 1

23-OCT-91	BELL LABS INDIANS	2.5	ALUMNI WEST	3.5	
ROUND 2					
BD		RATINGS	SCORE	RATINGS	SCORE
1	LUDWIG, T	2159-21	0	STEIN, P	2188 21 1
2	BHOJWANI, R	1767-12	0	UNDERWOOD, W	1946 8 1
3	BLACKMON, E	1703	9 .5	GRAFT, D	1836 -9 .5
4	EUSTACE, D	1346	42 1	WALLIN, R	1784-42 0
5	FLYNN, T	0	0 0	STELTON, N	1378 0 1
6	TURPIN, S	0	0 1F		0 0 0F

05-NOV-91	AT&T TYROS	5	BELL LABS INDIANS	1	
ROUND 3					
BD		RATINGS	SCORE	RATINGS	SCORE
1	STOLTZ, B	1958-12	0	LUDWIG, T	2138 12 1
2	BLAZIE, J	1827	18 1	BHOJWANI, R	1755-18 0
3	THOMAS, G	1415	38 1	BLACKMON, E	1712-38 0
4	SMITH, BR	1548	13 1	EUSTACE, D	1388-13 0
5	MCPHAIL, C	0	0 1	FLYNN, T	0 0 0
6	SCHWARTZ, M	1076	0 1F	WINGFIELD, L	0 0 0F

24-OCT-91 UOP PROCESS DIV.
ROUND 2

3 MOTOROLA

3

BD		RATINGS	SCORE		RATINGS	SCORE
1	STEVANOVIC, M	2242	9	1	EASTER, R	2094-13 0
2	BOLDINGH, E	2114	20	1	SAMELSON, C	2080-14 0
3	MICKLICH, F	1771	-6	0	CIESLEK, D	2028 8 1
4	SAJBEL, P	1726-18		0	AUGSBURGER, L	1791 18 1
5	BRIONES, M	1706-12		0	GONCHAROFF, N	1776 8 1
6	SAHLI, E	0	0	1	OGASAWARA, R	1604 0 0
7	STUHLBARG, D	1519-21		0	GRYPARIS, J	1364 32 1
8	CHEVERESAN, S	1415	0	1	DUNCAN, T	0 0 0
9	VAN ZILE, C	1379-22		0	OLUND, P	1391 22 1
10	WIECHERT, A	0	0	0	WEARY, M	0 0 1

28-OCT-91 EXEMPLARS
ROUND 1

3 FEL-PRO

3

BD		RATINGS	SCORE		RATINGS	SCORE
1	WONG, P	2207	2	1	MONZANI, A	1759 -3 0
2	CREWSE, L	2066	0	0F	WEITZ, R	1834 0 1F
3	BLOOM, B	2007	1	1	FELDMAN, A	1412 -1 0
4	SULLIVAN, J	2036	2	1	HESS, B	1548 -3 0
5	OELHAFEN, A	1316-37		0	THOMPSON, R	1044 37 1
6	PETERS, P	1112-29		0	BAKER, B	1006 29 1

NORTH DIVISION TOP TEN

STEVANOVIC,M	UOP	2251C
JAKSTAS,K	NORTH	2213C
WONG,P	EXMPL	2209C
MOYNIHAN,K	MTRLA	2182
BOLDINGH,E	UOP	2134*
SIWEK,M	KEMPR	2125
GOLUMBOVSKI,P	NORTH	2125*
EASTER,R	MTRLA	2081
SAMELSON,C	MTRLA	2066C
CREWSE,L	EXMPL	2066

EAST DIVISION TOP TEN

GILES,M	SEARS	2430
REYES,R	SEARS	2299C
CZERNIECKI,A	ALUMN	2253C
INUMERABLE,F	PSTOF	2231
JASAITIS,A	CRT	2160
GREGORY,J	PSTOF	2150
WIRTSCHAFTER,D	ALUMN	2109
HODINA,J	AMCRP	2066
GOLLA,R	SEARS	2059C
FRIESEMA,W	CRT	2035

NEAR WEST DIVISION TOP TEN

LEVINE,D	KNIGHT	2397
BENEDEK,R	KNIGHT	2221D
GUIO,J	ROYLS	2204
WARREN,J	CHRGR	2171D
JONES,B	ROCKW	2149
TEGEL,F	DRGNS	2104D
BERRY,G	KNIGHT	2069D
JACOBS,N	DRGNS	1990C
YOUNG,C	KNIGHT	1971C
DOBROVOLNY,C	ROYLS	1887

FAR WEST DIVISION TOP TEN

KOZLOVSKY,M	FERMI	2283*
STEIN,P	AWEST	2209
LUDWIG,T	INDNS	2150
SPIEGEL,L	FERMI	2105C
STINSON,M	INDNS	2028
BUCHNER,R	INDNS	2027
ROSE,K	AMOCO	1975
GLICENSTEIN,J	FERMI	1955
UNDERWOOD,W	AWEST	1954C
STOLTZ,B	TYROS	1946

MOST IMPROVED PLAYERS

DENG,J	CRT	90
RAFACZ,T	ROCKW	63
BECKLEY,S	DRGNS	56
FRIESEMA,W	CRT	53
BOLDINGH,E	UOP	47
BERNARD,D	CRT	44
HODINA,J	AMCRP	43
DOBR,K	CHRGR	39
THOMAS,G	TYROS	38
KLINEFELTER,H	JCASE	38

NAME	TEAM	W	L	D	RATING	NAME	TEAM	W	L	D	RATING
ALMAZAN, S	NORTH	0	0	0	0000?	CIMMARRUSTI, A	CRT	0	0	0	0000?
ANDERSON, CJ	ROYLS	0	2	0	1224*	CISKO, G	FERMI	2	0	0	0000?
ANGLIN, B	SEARS	0	0	0	1684*	COLE, P	FERMI	1	0	0	0000?
ATKINSON, J	AMCRP	2	1	0	1848	COOPER, B	WASTE	0	2	0	0000?
AUGSBURGER, L	MTRLA	1	0	0	1809	COOPER, W	PSTOF	1	1	1	1663
AUSTIN, R	ROYLS	0	1	1	0000?	COTE, J	MERC	1	3	0	1327*
BAKER, B	FLPRO	1	0	0	1035	COX, M	ALUMN	0	0	1	2015C
BAKER, LR	MERC	2	1	0	0000?	CREWSE, L	EXMPL	0	0	0	2066
BARRON, L	MERC	0	0	0	0000?	CROWE, R	ROYLS	0	1	1	1394*
BAURAC, D	KNGHT	0	0	0	1676C	CUMMUTA, P	KEMPR	0	1	0	1376
BEARD, G	ALUMN	0	1	0	1822	CZERNIECKI, A	ALUMN	1	1	1	2253C
BECKLEY, S	DRGNS	1	0	2	1448*	DAVIDSON, M	ALUMN	1	0	0	1655*
BENEDEK, R	KNGHT	1	0	1	2221D	DAWSON, J	KNGHT	0	0	1	1404
BERNARD, D	CRT	2	1	1	1283*	DECMAN, S	KNGHT	0	2	0	1772C
BERRY, G	KNGHT	0	2	1	2069D	DENG, J	CRT	4	0	0	1644*
BHOJWANI, C	TYROS	2	0	0	1942	DEWITT, G	ROCKW	0	1	0	1363C
BHOJWANI, R	INDNS	1	2	0	1737#	DEZONNO, T	ROCKW	1	1	0	1149#
BISH, D	NORTH	0	1	0	0000?	DIAZ, P	NORTH	2	0	0	1990
BLACKMON, E	INDNS	0	1	1	1674	DOBR, K	CHRGR	4	0	0	1604D
BLAZIE, J	TYROS	2	0	1	1845	DOBROVOLNY, C	ROYLS	0	2	1	1887
BLOEDOW, P	KEMPR	0	0	0	1472C	DOWAT, C	FERMI	0	0	0	1496
BLOOM, B	EXMPL	1	0	0	2008	DUNCAN, T	MTRLA	1	1	0	0000?
BOLDINGH, E	UOP	2	0	0	2134*	DURKEE, D	DRGNS	2	2	0	1776C
BOOKER, G	RADIO	0	0	0	0000?	DYCKOWSKI, R	CONBK	1	1	0	1657#
BRADY, R	CHRGR	1	0	0	1355*	EASTER, R	MTRLA	1	1	0	2081
BRANCH, Y	COLUM	2	1	0	0000?	EDWARDS, S	EXMPL	0	0	0	1241
BRIONES, M	UOP	0	1	0	1694C	EFRON, D	ROCKW	1	1	0	1555
BROCKETT, M	SEARS	0	0	0	1771	ELEK, G	NORTH	0	1	0	997*
BRONFELD, A	ALUMN	0	0	1	1810	ELIASOFF, D	WASTE	0	1	0	0000?
BROTOS, J	ALUMN	0	1	0	1572D	ELLERY, G	RADIO	1	1	0	1504*
BROWN, S	MERC	0	0	0	0000?	ERLENBORN, M	AWEST	1	0	0	1456*
BROZOVICH, J	TYROS	1	0	0	1781C	EUSTACE, D	INDNS	1	2	0	1375*
BUCHANAN, R	ALUMN	0	0	1	1464C	FABIJONAS, R	EXCAL	0	0	0	1785D
BUCHNER, R	INDNS	0	0	0	2027	FELDMAN, A	FLPRO	0	1	0	1411
BUERGER, E	EXCAL	0	0	0	2082D	FILICHIA, T	KEMPR	0	0	0	0000?
BURIAN, D	NORTH	0	1	0	1650	FIPPINGER, P	WHEAT	0	0	0	0000?
CAMPBELL, C	AMCRP	0	0	0	1186	FLYNN, T	INDNS	0	3	0	0000?
CAMPBELL, D	AMOCO	0	0	0	0000?	FRAATS, D	CONBK	1	1	1	1853
CARTER, D	JCASE	0	1	0	1078*	FRANEK, M	ALUMN	1	1	0	1856
CARTER, L	PSTOF	1	2	0	1461	FRANK, M	MERC	1	3	0	1723*
CEASE, H	FERMI	1	1	0	0000?	FRIESEMA, W	CRT	4	0	0	2035
CELANDER, C	COLUM	0	2	1	0000?	FRISKE, T	EXCAL	0	0	0	1843
CHAN, H	SEARS	1	1	1	1556	GAINES, I	FERMI	1	0	0	1749C
CHARKOVSKY, R	ALUMN	0	1	1	1672*	GAMEZ, M	JCASE	0	0	0	0000?
CHEVERESAN, S	UOP	2	0	0	1415C	GASTON, K	JCASE	1	2	0	0000?
CHIU, H	KNGHT	1	0	0	1653*	GAVIN, L	MERC	0	1	1	1205
CHOUDRY, A	KEMPR	0	0	0	0000?	GELBART, S	SECST	0	0	0	2272
CHRISTIAN, R	DRGNS	0	0	0	1843C	GIBSON, K	AMCRP	0	0	0	0000?
CIBA, F	SEARS	0	0	0	1406	GILES, M	SEARS	0	0	0	2430
CIESLEK, D	MTRLA	2	0	0	2036	GLICENSTEIN, J	FERMI	2	0	0	1955

? - UNRATED
- 5 TO 9 RATED GAMES
* - 10 TO 24 RATED GAMES

C - CENTURY CLUB MEMBER
D - DOUBLE CENTURION

NAME	TEAM	W	L	D	RATING	NAME	TEAM	W	L	D	RATING
GOLLA, R	SEARS	2	0	1	2059C	KRULL, E	AMCRP	1	0	0	1402*
GOLUMBOVSKI, P	NORTH	0	1	0	2125*	KUKES, S	AMOCO	0	0	0	2326#
GONCHAROFF, N	MTRLA	1	0	0	1784D	KUMRO, D	CHRGR	0	3	1	1694D
GRAFT, D	AWEST	0	0	2	1827	LAMBIRIS, J	KEMPR	0	0	0	0000?
GREEN, D	KNGHT	2	0	0	1832C	LASKY, J	RADIO	0	2	0	1374
GREGORY, J	PSTOF	1	1	0	2150	LASKY, JIM	RADIO	0	0	0	1712#
GROTANS, G	MERC	0	0	0	1258*	LASKY, N	RADIO	1	1	0	1458
GRYPARIS, J	MTRLA	1	0	0	1396	LATIMER, E	SEARS	1	1	1	2012D
GUILLEN, B	KEMPR	0	1	0	0000?	LEE, R	TYROS	0	0	0	0000?
GUIO, J	ROYLS	2	0	1	2204	LEMPA, K	SECST	0	0	0	1524*
GUTNIK, I	JCASE	0	0	0	0000?	LENDI, L	WASTE	0	1	0	0000?
HAHNE, D	ROYLS	1	0	1	1569	LEQUERE, F	KNGHT	0	0	1	0000?
HAMILTON, L	AMCRP	2	0	0	1418#	LESTER, M	MTRLA	0	0	0	1588
HAMMOND, M	CONBK	1	0	0	1354*	LEVINE, D	KNGHT	0	0	0	2397
HAMPER, P	AMCRP	1	2	0	0000?	LITVINAS, A	ALUMN	1	1	1	1755C
HARRIS, F	SEARS	0	0	0	0000?	LODER, S	INDNS	0	0	0	0000?
HARRIS, R	FERMI	2	0	0	1578	LORING, S	CONBK	0	0	0	1982
HERMANN, T	WASTE	0	2	0	0000?	LOSOFF, A	CRT	1	1	0	1999
HERNANDEZ, D	MTRLA	0	0	0	1462	LUDWIG, T	INDNS	2	1	0	2150
HESS, B	FLPRO	0	1	0	1545	MANILLA, M	AMOCO	1	1	0	0000?
HICKS, C	ROYLS	0	0	0	1461	MARCOWKA, R	PSTOF	2	1	0	2012C
HILL, R	KNGHT	1	0	1	1656	MCALISTER, K	COLUM	2	1	0	1857
HILLIARD, J	CONBK	0	0	0	0000?	MCFARLIN, B	KEMPR	0	0	0	0000?
HILTON, J	MERC	0	1	0	0000?	MCGRIFF, M	RADIO	2	0	0	1429
HODINA, J	AMCRP	2	0	0	2066	MCINTOSH, S	CONBK	1	0	0	1164#
HOLM, B	WASTE	0	2	0	1725	MCPHAIL, C	TYROS	1	1	0	0000?
HOWARD, W	PSTOF	1	2	0	1168*	MCQUINN, J	ROCKW	0	1	0	1509
HUGHES, N	KEMPR	0	0	0	1825C	MICKLICH, F	UOP	0	2	0	1765C
HUMPF, R	RADIO	0	0	0	1293*	MIKULECKY, B	RADIO	0	1	1	1286
HUNG, N	MTRLA	0	1	0	0000?	MILLER, TT	SEARS	2	0	0	1548#
HUTTAR, C	SECST	0	0	0	2016	MITCHAM, L	ROCKW	0	1	0	1638#
INUMERABLE, F	PSTOF	1	0	2	2231	MOHANTY, K	KNGHT	1	0	0	0000?
ISAACS, D	WASTE	0	2	0	0000?	MOKHTAR, M	INDNS	1	0	0	0000?
JACOBS, N	DRGNS	2	0	1	1990C	MOLES, J	MTRLA	0	0	0	1209
JAKSTAS, K	NORTH	0	0	1	2213C	MONZANI, A	FLPRO	0	1	0	1756
JAMES, V	TYROS	1	0	0	0000?	MOODY, L	CONBK	0	0	0	0000?
JASAITIS, A	CRT	1	1	2	2160	MORGAN, T	MTRLA	0	0	0	0000?
JONES, B	ROCKW	0	0	0	2149	MORRISON, J	KNGHT	1	0	0	1728
KALE, S	JCASE	2	0	0	1481*	MORTON, B	SEARS	1	0	2	1602
KALIHER, C	FERMI	0	0	0	1903	MOTYCKA, R	JCASE	0	2	0	1193
KANAS, W	JCASE	1	1	0	1279	MOYNIHAN, K	MTRLA	0	0	1	2182
KASSELBAUM, J	COLUM	0	0	0	0000?	NELSON, H	CONBK	0	1	0	1960
KELLOGG, K	KNGHT	0	0	0	1675C	NELSON, R	WHEAT	0	0	0	0000?
KELLY, S	DRGNS	2	2	0	1336*	NWABUDE, O	ROYLS	0	1	0	0000?
KLINEFELTER, H	JCASE	1	0	1	1492	O'DELL, DW	RADIO	0	0	1	1631
KOEPELE, J	TYROS	0	0	0	0000?	OELHAFEN, A	EXMPL	0	1	0	1279*
KOGAN, G	CONBK	1	2	0	1783*	OGASAWARA, L	ROYLS	0	2	0	1808
KOSTECKA, K	COLUM	0	3	0	1502	OGASAWARA, R	MTRLA	0	1	0	1604D
KOZLOVSKY, M	FERMI	0	0	0	2283*	OLSEN, A	KEMPR	0	1	0	0000?
KRAKAU, H	EXMPL	0	0	0	1962	OLUND, P	MTRLA	1	0	0	1413#

? - UNRATED

- 5 TO 9 RATED GAMES

* - 10 TO 24 RATED GAMES

C - CENTURY CLUB MEMBER

D - DOUBLE CENTURION

NAME	TEAM	W	L	D	RATING	NAME	TEAM	W	L	D	RATING
OSTERLUND, R	EXCAL	0	0	0	1902	SHIREY, S	KEMPR	0	1	0	0000?
OTAKAN, V	FLPRO	0	0	0	0000?	SIEGEL, R	CONBK	1	0	0	1541
PARA, A	FERMI	2	0	0	1724#	SIMS, B	CRT	0	0	0	0000?
PAROAN, E	CONBK	1	2	0	1731	SIWEK, M	KEMPR	0	0	1	2125
PATEL, R	CONBK	1	0	0	1430*	SKULSKI, I	EXMPL	0	0	0	1838
PETERS, P	EXMPL	0	1	0	1083*	SLUSSER, C	CRT	0	1	0	0000?
PETWAY, L	PSTOF	0	0	0	1471*	SMILEY, R	AMCRP	1	0	1	1994
POLIZZANO, S	WHEAT	0	0	0	0000?	SMITH, BR	TYROS	2	1	0	1561
POMA, D	AMOCO	1	1	0	0000?	SMITH, JM	SECST	0	0	0	1196*
POTTS, S	WHEAT	0	0	0	0000?	SOMBONG, M	CONBK	0	0	0	1754
POYNOR, D	WHEAT	0	0	0	0000?	SOPRYCH, T	AMCRP	0	0	0	1620C
PUECHNER, R	KEMPR	0	0	0	0000?	SPIEGEL, L	FERMI	1	0	0	2105C
PULTS, J	AMOCO	0	0	0	1814*	STAMM, V	CHRGR	2	0	0	1739D
PYLES, C	WHEAT	0	0	0	1294#	STEIN, P	AWEST	1	0	1	2209
RADAVICIUS, E	CHRGR	1	1	2	1728C	STELTON, N	AWEST	1	0	0	1378
RADKE, P	COLUM	0	1	0	0000?	STEMPINSKI, P	NORTH	0	0	0	1423
RADULSKI, R	TYROS	0	0	0	0000?	STEVANOVIC, M	UOP	1	0	1	2251C
RAFACZ, T	ROCKW	2	0	0	1669	STINSON, M	INDNS	0	0	0	2028
RAFACZ, W	ROCKW	0	2	0	1605	STOLTZ, B	TYROS	1	1	1	1946
REED, L	PSTOF	0	0	0	1737#	STUHLBARG, D	UOP	0	1	0	1498C
REHORST, R	FLPRO	0	0	0	0000?	SUERTH, F	EXMPL	0	0	0	1562
REID, C	JCASE	0	1	0	1237	SUH, G	AMOCO	0	2	0	1445#
REID, D	MERC	0	0	0	0000?	SULLIVAN, C	MERC	0	4	0	1598*
REVULURI, K	MTRLA	1	0	0	0000?	SULLIVAN, J	EXMPL	1	0	0	2038D
REYES, R	SEARS	1	0	1	2299C	SWIDERSKI, M	CHRGR	0	0	1	1353C
RIEDERER, D	CRT	1	1	0	1116#	SZAUKELLIS, W	MTRLA	0	1	0	0000?
RINGENBERG, T	AMOCO	0	0	0	1363*	TATARSKY, J	KEMPR	0	0	0	1435#
RIPPE, D	TYROS	0	0	0	0000?	TAYLOR, F	WHEAT	0	0	0	1214*
RO, D	CRT	0	1	0	1488*	TEGEL, F	DRGNS	1	2	1	2104D
ROGERS, N	PSTOF	0	0	0	1973*	THOMAS, G	TYROS	1	0	0	1453
ROQUE, P	COLUM	0	1	0	0000?	THOMAS, J	CHRGR	1	2	0	1543C
ROSE, K	AMOCO	0	0	0	1975	THOMPSON, R	FLPRO	1	0	0	1081
ROSEN, JJ	FERMI	0	0	0	0000?	TOLPPI, J	WASTE	0	2	0	0000?
ROHING, G	EXCAL	0	0	0	1433	TROPP, W	TYROS	0	0	0	0000?
ROSKO, D	SEARS	0	0	0	0000?	TURNER, R	COLUM	1	2	0	0000?
ROSLEY, D	ROYLS	0	0	1	1816	TURPIN, S	INDNS	0	0	0	0000?
RUDDY, J	MERC	0	2	0	1231*	UNDERWOOD, W	AWEST	1	1	0	1954C
RZESZUTKO, R	ALUMN	0	0	1	1981	VAN MEER, J	KEMPR	0	0	0	1901
SAHLI, E	UOP	1	0	1	0000?	VAN ZILE, C	UOP	0	1	0	1357#
SAJBEL, P	UOP	1	1	0	1708	VELAYUTHAM, S	TYROS	0	0	0	1305#
SAJKOWSKI, D	AMOCO	0	2	0	1889	VIGANTS, A	NORTH	0	0	1	1617
SAMELSON, C	MTRLA	1	1	0	2066C	WALHOUT, P	WHEAT	0	0	0	2088
SATTERLEE, D	JCASE	1	0	1	1637	WALKER, R	FERMI	0	1	0	1376C
SCHATTKE, N	AMOCO	0	1	0	0000?	WALLACH, C	MTRLA	1	0	0	2051
SCHULMAN, R	EXMPL	0	0	0	1925C	WALLIN, R	AWEST	1	1	0	1742*
SCHWARTZ, M	TYROS	1	1	0	1076#	WARD, C	DRGNS	1	2	1	1605D
SCHWARTZ, S	SEARS	0	0	0	1719C	WARREN, J	CHRGR	3	1	0	2171D
SEEGER, S	WHEAT	0	0	0	0000?	WEARY, M	MTRLA	1	0	0	0000?
SHAFF, R	TYROS	0	0	0	1538C	WEISNER, T	RADIO	0	0	0	1142
SHEU, G	ROYLS	1	1	0	1347*	WEITZ, R	FLPRO	0	0	0	1834C

? - UNRATED
- 5 TO 9 RATED GAMES
* - 10 TO 24 RATED GAMES

C - CENTURY CLUB MEMBER
D - DOUBLE CENTURION

NAME	TEAM	W	L	D	RATING	NAME	TEAM	W	L	D	RATING
WENTLING,C	AMCRP	1	1	0	1532	WIRTSCHAFTER,D	ALUMN	0	0	0	2109
WEST,R	MTRLA	0	0	0	0000?	WONG,P	EXMPL	1	0	0	2209C
WHITE,H	JCASE	1	1	0	1748	YOUNG,C	KNIGHT	2	0	0	1971C
WHITSITT,S	DRGNS	0	0	0	1571*	ZAROMB,S	KNIGHT	0	0	0	1480
WIECHERT,A	UOP	0	1	0	0000?	ZEFF,T	SEARS	0	0	0	0000?
WIENS,P	WHEAT	0	0	0	1387	ZEIDEL,J	MERC	0	1	0	1956
WINGFIELD,L	INDNS	0	0	0	0000?	ZIMMERMAN,T	TYROS	0	0	0	0000?
WINSTON,H	SECST	0	0	0	1994	ZOELLNER,J	CONBK	0	0	1	1212

? - UNRATED

- 5 TO 9 RATED GAMES

* - 10 TO 24 RATED GAMES

C - CENTURY CLUB MEMBER

D - DOUBLE CENTURION