

**Chicago
Industrial
Chess
League**

Bulletin 1, Volume 35

October-

November, 1991

INSIDE THIS ISSUE:

**Match Results
CICL Ratings List
2 Squares Column
Annotated Games**

NEED INPUT! To make the CICL bulletin even better, we are looking for anyone interested in submitting articles or games. If you are interested, call or write to the bulletin editor.

--Bulletin Editor - James Hodina

Home: 708/799-5571

Work: 312/856-2762

CICL OFFICERS

As of August 30, 1991

Addresses/Phones are listed in order of preference

| | | |
|--|--|--|
| PRESIDENT | Anthony Jasaitis P.O. Box 664 Bedford Park, IL 60499-0664 Chicago Research & Trading 33rd Floor 440 S. LaSalle Chicago, IL 60605 | 312-421-2966 (W) 708-448-4967 (H) |
| SECRETARY | Leonard Spiegel MS 219 Fermilab Batavia, IL 60510 | 708-840-2809 (W) 708-377-2675 (H) |
| TREASURER | Wesley K. Underwood 207 S. Dorchester Ave. Wheaton, IL 60187 | 708-752-5127 (W) 708-462-0393 (H) |
| RATINGS CHAIRMAN | Charles Ward 615 S. Lincoln Hindale, IL 60521 | 708-979-4599 (W) 708-325-3885 (H) 708-979-8451 (FAX) |
| BULLETIN CHAIRMAN | James Hodina 718 Central Park Ave. Flossmoor, IL 60422 | 312-856-2762 (W) 708-799-5571 (H) |
| NORTH DIVISION CHAIRMAN | Leonard Augsburger 16 N. Fiore Vernon Hills, IL 60061 | 708-632-5102 (W) 708-816-1649 (H) |
| EAST DIVISION CHAIRMAN | William Cooper 7035 W. Imlay Chicago, IL 60631 | 312-765-3493 (W) 312-763-1567 (H) |
| NEAR WEST DIVISION CHAIRMAN | Dan Kumro 802 S. Elmhurst Ave. Mount Prospect, IL 60056 | 708-259-4981 (H) |
| FAR WEST DIVISION CHAIRMAN | Irwin Gaines Fermilab - m/s 127 P. O. Box 500 Batavia, IL 60510 | 708-840-4022 (W) |

A Word From The Editor

I would first like to thank everyone for their cooperation in putting out the bulletin, especially those who have contributed games or articles. Be sure to read them as I am sure you will find them interesting and, yes, may even help your game.

As a new idea to promote game submittal, Ruben Reyes is the first to submit a game with the players remaining anonymous. The purpose is to retain confidentiality while sharing some thoughts with the league. Therefore, no one will have their prized opening secrets revealed for the future. Let me know what you think of this.

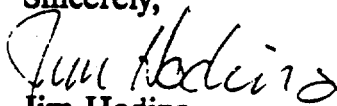
As might be expected with the first bulletin, a few typos existed. Most important of which was the dues announcement. The \$65 minimum dues was per company and not per team as originally stated. This pertains to those companies which have more than one team in the CICL. This was my oversight and I apologize for the inconvenience. Wes Underwood, CICL Treasurer would like me to extend thanks to those teams who have paid their dues in a timely manner: CRT, Motorola, Continental Bank, AT&T Tyros, AT&T Charger, Columbia College, Sears, Franklin-Watts, Inc., Fermilab, Exemplars. A reminder that dues submitted after Nov. 30 incur a \$5 additional late fee.

I would like to extend a welcome to the two new teams to the CICL. Columbia College and Franklin-Watts, Inc.

As you may have noticed, this issue was titled "October-November." Due to increased copying costs, fewer bulletins will be published in order to stay within our budget. You can expect the next issue to hit the newsstands before the holidays in December. The CICL has had the liberty of "free" copying in the past, but with the changing of the editor, this has gone by the wayside.

I appreciate (and will even plead) for constructive input from the league members regarding the bulletin. I have already received some great advice and thank those for contributing.

Sincerely,


Jim Hodina

SICILIAN DEFENSE

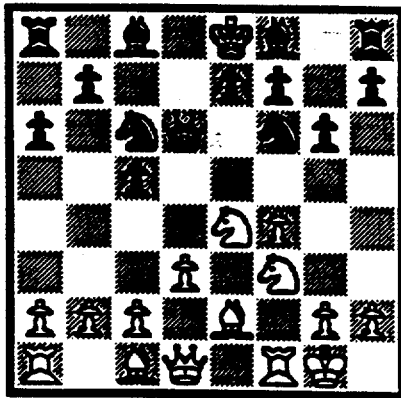
[B21]

W: N. Goncharoff

B: R. Allison

Illinois Open, 1990

In this game, Black commits a common error of making "normal developing moves" without regard to the strategic theme of his chosen opening. 1.e4, c5 2.f4, a6 3.Nf3, d5. 4.exd5, Qxd5. Black has disrupted White's center, the e4-f4 pawn duo, at the cost of development. He must now be careful in his development and not allow White to reestablish his center. 5.Nc3, Qd6! 6.d3, Nf6. Case in point - Nf6 is a natural move, however, it allows White to develop tactics against Qd6. White now prepares Ne4 forcing the exchange and subsequent recapture with the "d" pawn and regaining control in the center. Black is not forbidden to play Nf6, but should best prepare it with g6 and Bg7. 7.Be2, Nc6. Black is better served by Ncd7 allowing the retreat of the queen to c7 after Ne4. 8.O-O, White should play Ne4 while he can. 8..., g6. Black is oblivious to Ne4 and should play Qc7 allowing Nd5 in response to 9.Ne4. 9.Ne4, Finally!



After 9.Ne4

9..., Nxe4. By allowing White to reestablish the pawn duo in the center, Black has denied d5 and f5 to his pieces and will suffer in a cramped position. 10.dxe4, Bg4 11.c3, Rd8 12.Qxd6, exd6 13.h3, Be6 14.Ng5, b5 15.Nxe6, fxe6 16.Bg4, Ke7 17.f5,

h6 18.fxg6, Ne5 19.Bh5, Rg8 20.Be3, Nxc6 21.Rad1, Ne5 22.Bf4, Rd7 23.Bxe5, dxe5 24.Rxd7+ ?? (Rf7 wins a rook) Kxd7 25.Rf7+, Be7 26.Rh7, Rg3 27.Bf3, Rg6 28.Kf2, Ke8?? 29.Be5, Resigns

SICILIAN DEFENSE

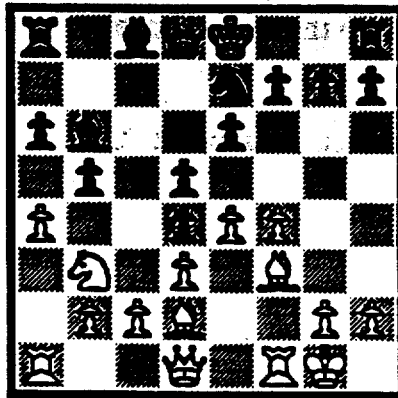
[B21]

W: N. Goncharoff

B: R. Reynolds

National Open, 1990

1.e4, c5 2.f4 e6 3.Nf3, Nc6 4.Bb5, Nd4! (Nce7 is more usual. Black is aggressively seeking space in the center and Queenside at the compromise of his pawn structure) 5.Nxd4, cxd5 6.O-O, a6 7.Be2, Bc5 8.d3, Ne7 9.Nd2, d5 (9..., b5 10.Nb3, Bb6 saves a valuable tempo over the text. Also, Black should be in no hurry to play d5 either as e5 would then yield the important d5 square to Black's pieces) 10.Nb3, Ba7 11.Bf3, b5 12.Bd2, Bb6 13.a4!



After 13.a4!

14..., Bb7 14.a5? (White releases the tension on the Queenside. Better may be 14.axb5, axb5 15.Rxa8 followed by Qe2 and Ra1 with good play on Black's Queen pawns.) 14..., Ba7 15.Qe1, dxe4 16.Bxe4, Bxe4 17.Qxe4, Qd5 18.Rae1, Rc8 19.Qxd5, Nxd5 20.Na1, O-O 21.g3, b4 22.f5, Rc5 23.fxe6, fxe6 24.Rxf8+, Kxf8 25.Rxe6, Rxa5 26.Nb3, Ra2 27.Bc1, a5 28.Re5, a4 29.Rxd5, axb3 30.cxb3, Ke7 31.Re5+, Kd7 32.Re2, Ra6 33.Rc2, Rc6 34.Rxc6, Kxc6 35.Bd7, Bc4 36.Kf2, Kd5 Draw

KINGS INDIAN DEFENSE

W: Expert

B: Class A

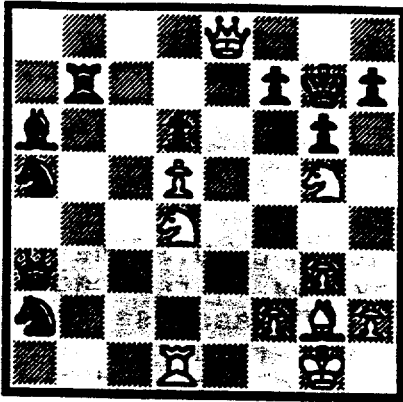
Annotations by Ruben Reyes

I'd like to share with the CICL bulletin readers this fine game between two high rated players in the East Division. Names have been omitted to enable publication of this game played in a match the outcome of which could bring the winner to the playoffs. The match ended in a 3-3 tie.

This game has an excellent finish where White sacs a knight for a mating attack. But watch how Black lures a hapless Reti opening specialist into a Benko type opening via King's Indian Defense. For were it not for an untimely 14...P-QB5, Black may have intensified the fire of his superb opening play and avoided a sudden slowdown in his attack and ultimate loss of the game.

The double fianchetto appears to be a good antidote to the Benko. And when stopped from doing it, White does the next best thing, position the QB at Q4, via K3. This results in the removal of Black's KB from the board and with the Black QB gone, an assault against Black's King results in success.

1.N-KB3, P-QB4, 2.PB4, P-KN3, 3.P-KN3, B-N2 4.B-N2, N-QB3 5.O-O, N-B3 6.N-B3, O-O 7.P-Q4, P-Q3 8.P-Q5, N-QR4 9.Q-Q3, P-QN4 10.PxP, P-QR3 11.PxP, BxP 12.Q-B2, Q-B2 13.R-Q1, KR-QN1 14.R-N1, P-QB5 15.P-K4, N-Q2 16.B-K3! N-B4 17.B-Q4, N-Q6 18.BxB, KxB 19.N-K2, Q-B4 20.N(2)-Q4, K-N1 21.Q-B3, N-N5 22.P-QR3, N-R7? 23.Q-K1, Q-B2 24.P-K5, P-B6 25.KPxP, KPXP 26.PxP, QxP 27.RxRch, RxR 28.Q-K7, QxRP 29.N-N5, R-N2 (If 29...R-B8 then 30.N(4)-K6 which threatens QxR mate and if 30...PxN, then 31.QxRP mate) 30.Q-K8ch K-N2



After 30...K-N2
 31.N(4)-Q6ch(l), PxN 32.NxP, K-B3
 33.Q-R8ch, K-B4 34.Q-B8ch, K-N5
 35.Q-B4ch (1-0)

THE 2 SQUARES COLUMN

by Marv Cox

"If four squares are attacked more than they are defended they may fall."

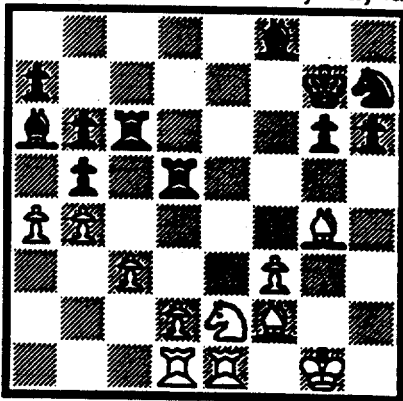


Diagram 25
 White to Play and Win

Let's examine some squares. b5 contains a potential pawn fork of bishop and rook. d4 contains a potential knight fork of b5 and c6. But exchanging pawns and then moving the knight to d4 doesn't work because of the rook on d5. Can we

deflect the d5 rook by putting our knight on f4? Now the rook must move off the 5th rank. A knight check from e6 gains a tempo so the knight can now move to d4. Looks like we have a four square problem, b5, d4, e6, and c6. White has four attackers of those four squares: a pawn, knight, bishop, and rook. Black has only two defenders of those four squares: the bishop and rook on d5. The pawn on b5 and the rook on c6 do not count as defenders because they are occupants of squares to be attacked.

1.Nf4, Rd6 2.ab, Bb5 Reduces to 3 squares. 3.Ne6+, Kf6 White gains the tempo. 4.Nd4, Ba4 A two square knight fork. 5.Ra1, b5 Black's escape foiled. 6.Nc6, Rc6 Captures the one square.

"If one square is attacked more times than it is defended it may fall." This is pretty obvious, isn't it? So here is a real cheapy, a one square problem.

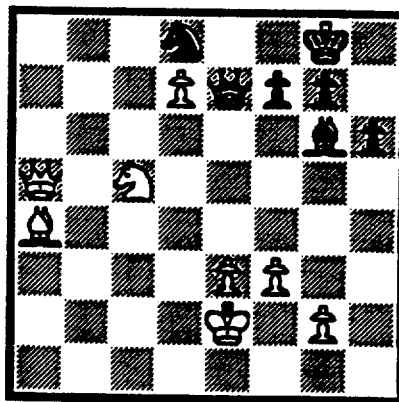


Diagram 26
 White to Play and Win

The square we are concerned with is d8. How do we queen the pawn? It is blocked by the black knight. The knight is attacked once and guarded once. Our white knight can't effectively become a second attacker against d8. My uncle read me a phrase from Aron Nimzowith's, My System, "Change the blocker." Does that turn on the light?

1.Qd8+, Qd8 2.Nb7, Bc2 3.Nd8, Ba4 4.Nc6, Bc6 5.d8(Q) 1-0

"If three squares are attacked more times than they are defended they may fall."

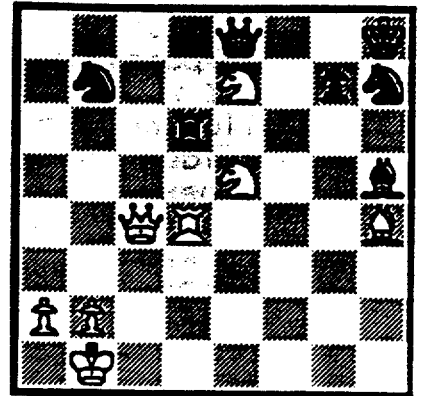


Diagram 27
 White to Play and Win

Squares d6, g8, and g6 are attacked four times by the white queen, rook, and two knights. The three squares are also defended by four pieces, the black knight, queen, king, and bishop. However, defense by a king is this time illusory as is often the case. If we can make black block g8 and also lose the guards of g6 we can hit the black king with a white knight.

1.Rd6, Nd6 It's now a two squares problem, g6 and g8. Note that black should not capture the rook but can put up a defense by moving his knight in order to free his king. White can still with good play.

2.Qg8+, Qg8 We're down to a one square problem, g6. 3.Ng6+, Bg6 4.Ng6 mate.

RATINGS REPORT

Submit Results by Fax???

Team captains: please submit match results for rating by U.S. mail when possible. The legibility of results sent by fax is reduced, and I would like to minimize fax machine traffic. Please use the following schedule when sending match results for rating. It provides for last-minute submission of results to be included in the next issue of the CICL Bulletin:

| Ratings Deadline ----- | Use U.S. mail ----- | OK to use fax ----- |
|------------------------------|------------------------|------------------------|
| 11/16 | 10/21 - 11/12 | 11/13 - 11/15 |
| 12/28 | 11/16 - 12/27 | do not fax |
| 1/25 | 12/28 - 1/21 | 1/22 - 1/24 |

My mailing address is: Charlie Ward
615 S. Lincoln St.
Hinsdale, IL 60521

Additional "fax windows" will be published in future Bulletins. When submitting match results via fax, print the players' names in black ink using large-size lettering to ensure legibility. Also, please do not fax size-reduced results sheets if possible.

New Players

Team captains are requested to note on the match results sheet whether players playing in their first CICL match have had a USCF rating in the past. If not, indicate "no USCF" next to the new player's name. If so, please include the player's first name and indicate when possible the approximate value of the rating and the approximate date that the player last played in a USCF event. This will allow me to locate the current USCF rating to use as the initial CICL rating.

NORTH DIVISION 10-20-1991

| TEAM NAME | W | L | D | GAME POINTS | MATCH POINTS | PCT |
|------------------|---|---|---|-------------|--------------|-------|
| MOTOROLA | 1 | 0 | 0 | 5.5 | 1.0 | 1.000 |
| UOP PROCESS DIV. | 1 | 0 | 0 | 4.0 | 1.0 | 1.000 |
| NORTHROP CORP. | 0 | 1 | 0 | 2.0 | 0.0 | 0.000 |
| KEMPER INSURANCE | 0 | 1 | 0 | 0.5 | 0.0 | 0.000 |
| FRANKLIN-WATTS | 0 | 0 | 0 | 0.0 | 0.0 | 0.000 |
| EXEMPLARS | 0 | 0 | 0 | 0.0 | 0.0 | 0.000 |
| FEL-PRO | 0 | 0 | 0 | 0.0 | 0.0 | 0.000 |

EAST DIVISION 10-20-1991

| TEAM NAME | W | L | D | GAME POINTS | MATCH POINTS | PCT |
|----------------------|---|---|---|-------------|--------------|-------|
| CONTINENTAL BANK | 1 | 1 | 0 | 7.5 | 1.0 | 0.500 |
| ALUMNI CENTRAL | 1 | 1 | 0 | 5.5 | 1.0 | 0.500 |
| COLUMBIA COLLEGE | 1 | 1 | 0 | 4.5 | 1.0 | 0.500 |
| CHICAGO POST OFFICE | 1 | 0 | 0 | 4.0 | 1.0 | 1.000 |
| AMOCO CORP. | 1 | 0 | 0 | 4.0 | 1.0 | 1.000 |
| SEARS | 1 | 0 | 0 | 4.0 | 1.0 | 1.000 |
| CHICAGO MERC. EXCH. | 0 | 2 | 0 | 4.5 | 0.0 | 0.000 |
| CHICAGO RES. & TRDG. | 0 | 1 | 0 | 2.0 | 0.0 | 0.000 |

NEAR WEST DIVISION 10-20-1991

| TEAM NAME | W | L | D | GAME POINTS | MATCH POINTS | PCT |
|-------------------|---|---|---|-------------|--------------|-------|
| ARGONNE KNIGHTS | 1 | 0 | 1 | 7.0 | 1.5 | 0.750 |
| A & B RADIO | 1 | 1 | 0 | 6.0 | 1.0 | 0.500 |
| J. I. CASE | 1 | 0 | 0 | 4.0 | 1.0 | 1.000 |
| AT&T CHARGERS | 0 | 1 | 1 | 5.0 | 0.5 | 0.250 |
| ROCKWELL INT'L | 0 | 0 | 1 | 3.0 | 0.5 | 0.500 |
| BELL LABS DRAGONS | 0 | 0 | 1 | 3.0 | 0.5 | 0.500 |
| BELL LABS ROYALS | 0 | 1 | 0 | 2.0 | 0.0 | 0.000 |

FAR WEST DIVISION 10-20-1991

| TEAM NAME | W | L | D | GAME POINTS | MATCH POINTS | PCT |
|----------------------|---|---|---|-------------|--------------|-------|
| AT&T TYROS | 1 | 0 | 1 | 9.0 | 1.5 | 0.750 |
| FERMILAB | 1 | 0 | 0 | 6.0 | 1.0 | 1.000 |
| BELL LABS INDIANS | 1 | 0 | 0 | 4.0 | 1.0 | 1.000 |
| ALUMNI WEST | 0 | 0 | 1 | 3.0 | 0.5 | 0.500 |
| AMOCO RESEARCH LABS | 0 | 1 | 0 | 2.0 | 0.0 | 0.000 |
| CHM WASTE MANAGEMENT | 0 | 2 | 0 | 0.0 | 0.0 | 0.000 |

19-SEP-91 AT&T CHARGERS
ROUND 1

3

ROCKWELL INT'L

3

| BD | | RATINGS | SCORE | | RATINGS | SCORE |
|----|---------------|---------|-------|------------|---------|-------|
| 1 | WARREN, J | 2173 1 | 1 | RAFACZ, W | 1609 -2 | 0 |
| 2 | KUMRO, D | 1728-20 | 0 | RAFACZ, T | 1606 30 | 1 |
| 3 | STAMM, V | 1717 12 | 1 | MITCHAM, L | 1657-19 | 0 |
| 4 | RADAVICIUS, E | 1728-22 | 0 | EFRON, D | 1542 34 | 1 |
| 5 | DOBR, K | 1565 7 | 1 | DEWITT, G | 1374-11 | 0 |
| 6 | THOMAS, J | 1548 0 | 0 | DEZONNO, T | 0 0 | 1 |

02-OCT-91 BELL LABS ROYALS
ROUND 1

2

A & B RADIO

4

| BD | | RATINGS | SCORE | | RATINGS | SCORE |
|----|---------------|---------|-------|--------------|---------|-------|
| 1 | GUIO, J | 2189-21 | .5 | O'DELL, DW | 1610 21 | .5 |
| 2 | DOBROVOLNY, C | 1942-42 | 0 | ELLERY, G | 1479 42 | 1 |
| 3 | HAHNE, D | 1567 13 | 1 | LASKY, J | 1406-13 | 0 |
| 4 | SHEU, G | 1345-15 | 0 | LASKY, N | 1467 15 | 1 |
| 5 | ANDERSON, CJ | 1254-13 | 0 | MCGRIFF, M | 1404 13 | 1 |
| 6 | AUSTIN, R | 0 0 | .5 | MIKULECKY, B | 1312 0 | .5 |

02-OCT-91 BELL LABS DRAGONS
ROUND 1

3

ARGONNE KNIGHTS

3

| BD | | RATINGS | SCORE | | RATINGS | SCORE |
|----|------------|---------|-------|-------------|---------|-------|
| 1 | TEGEL, F | 2124 4 | .5 | BENEDEK, R | 2211 -4 | .5 |
| 2 | JACOBS, N | 1968 21 | 1 | BERRY, G | 2112-21 | 0 |
| 3 | DURKEE, D | 1784 16 | 1 | DECMAN, S | 1811-16 | 0 |
| 4 | WARD, C | 1602-10 | 0 | MORRISON, J | 1712 16 | 1 |
| 5 | BECKLEY, S | 1392 15 | .5 | HILL, R | 1671-15 | .5 |
| 6 | KELLY, S | 1308 -6 | 0 | CHIU, H | 1647 6 | 1 |

10-OCT-91 ARGONNE KNIGHTS
ROUND 2

4

AT&T CHARGERS

2

| BD | | RATINGS | SCORE | | RATINGS | SCORE |
|----|------------|---------|-------|---------------|---------|-------|
| 1 | BENEDEK, R | 2207 14 | 1 | WARREN, J | 2174-14 | 0 |
| 2 | BERRY, G | 2091-12 | .5 | RADAVICIUS, E | 1706 12 | .5 |
| 3 | YOUNG, C | 1952 6 | 1 | KUMRO, D | 1708 -6 | 0 |
| 4 | DECMAN, S | 1795-23 | 0 | DOBR, K | 1572 23 | 1 |
| 5 | GREEN, D | 1811 5 | 1 | THOMAS, J | 1548 -8 | 0 |
| 6 | DAWSON, J | 1408 -4 | .5 | SWIDERSKI, M | 1351 2 | .5 |

15-OCT-91 J. I. CASE
ROUND 2

4

A & B RADIO

2

| BD | | RATINGS | SCORE | | RATINGS | SCORE |
|----|----------------|---------|-------|--------------|---------|-----------|
| 1 | WHITE, H | 1752 0 | OF | O'DELL, DW | 1631 0 | 1F |
| 2 | SATTERLEE, D | 1615 17 | 1 | ELLERY, G | 1521-17 | 0 |
| 3 | KALE, S | 1450 19 | 1 | LASKY, J | 1393-19 | 0 |
| 4 | KLINEFELTER, H | 1454 24 | 1 | LASKY, N | 1482-24 | 0 |
| 5 | REID, C | 1249-12 | 0 | MCGRIFF, M | 1417 12 | 1 |
| 6 | KANAS, W | 1265 26 | 1 | MIKULECKY, B | 1312-26 | 0 |
| 7 | GASTON, K | 0 0 | 1 | MOTYCKA, R | 1197 0 | 0 (JCASE) |
| 8 | WHITE, H | 1752 0 | 1 | GASTON, K | 0 0 | 0 (JCASE) |

26-SEP-91 AT&T TYROS
ROUND 1

3 ALUMNI WEST

3

| BD | | RATINGS | SCORE | | RATINGS | SCORE |
|----|-------------|---------|-------|--------------|---------|-----------|
| 1 | STOLTZ, B | 1933 15 | .5 | STEIN, P | 2203-15 | .5 |
| 2 | BHOJWANI, C | 1917 25 | 1 | UNDERWOOD, W | 1963-17 | 0 |
| 3 | BLAZIE, J | 1826 1 | .5 | GRAFT, D | 1837 -1 | .5 |
| 4 | SMITH, BR | 1558-10 | 0 | WALLIN, R | 1784 10 | 1 |
| 5 | SCHWARTZ, M | 1081 -5 | 0 | ERLENBORN, M | 1451 5 | 1 |
| 6 | MCPHAIL, C | 0 0 | 1F | | 0 0 | OF |
| 7 | MCPHAIL, C | 0 0 | 0 | JAMES, V | 0 0 | 1 (TYROS) |

01-OCT-91 FERMILAB
ROUND 1

6 CHM WASTE MANAGEMENT

0

| BD | | RATINGS | SCORE | | RATINGS | SCORE |
|----|----------------|---------|-------|------------|---------|-----------|
| 1 | SPIEGEL, L | 2100 5 | 1 | HOLM, B | 1740 -5 | 0 |
| 2 | GLICENSTEIN, J | 1934 0 | 1 | ISAACS, D | 0 0 | 0 |
| 3 | PARA, A | 0 0 | 1 | HERMANN, T | 0 0 | 0 |
| 4 | HARRIS, R | 1578 0 | 1 | TOLPPI, J | 0 0 | 0 |
| 5 | CISKO, G | 0 0 | 1 | COOPER, B | 0 0 | 0 |
| 6 | COLE, P | 0 0 | 1 | LENDI, L | 0 0 | 0 |
| 7 | CEASE, H | 0 0 | 1 | WALKER, R | 1376 0 | 0 (FERMI) |

01-OCT-91 AMOCO RESEARCH LABS
ROUND 1

2 BELL LABS INDIANS

4

| BD | | RATINGS | SCORE | | RATINGS | SCORE |
|----|--------------|---------|-------|-------------|---------|-------|
| 1 | SAJKOWSKI, D | 1920-10 | 0 | LUDWIG, T | 2149 10 | 1 |
| 2 | SUH, G | 0 0 | 0 | BHOJWANI, R | 1767 0 | 1 |
| 3 | POMA, D | 0 0 | 1 | EUSTACE, D | 1346 0 | 0 |
| 4 | MANILLA, M | 0 0 | 1 | FLYNN, T | 0 0 | 0 |
| 5 | SCHATTKE, N | 0 0 | 0 | MOKHTAR, M | 0 0 | 1 |
| 6 | | 0 0 | OF | | 0 0 | 1F |

16-OCT-91 AT&T TYROS
ROUND 2

6 CHM WASTE MANAGEMENT

0

| BD | | RATINGS | SCORE | | RATINGS | SCORE |
|----|--------------|---------|-------|-------------|---------|-------|
| 1 | STOLTZ, B | 1948 10 | 1 | HOLM, B | 1735-10 | 0 |
| 2 | BHOJWANI, C | 1942 0 | 1 | HERMANN, T | 0 0 | 0 |
| 3 | BLAZIE, J | 1827 0 | 1 | ISAACS, D | 0 0 | 0 |
| 4 | BROZOVICH, J | 1781 0 | 1 | TOLPPI, J | 0 0 | 0 |
| 5 | SMITH, BR | 1548 0 | 1 | COOPER, B | 0 0 | 0 |
| 6 | SCHWARTZ, M | 1076 0 | 1 | ELIASOFF, D | 0 0 | 0 |

30-SEP-91 AMOCO CORP.
ROUND 1

4 CHICAGO RES. & TRDG.

2

| BD | | RATINGS | SCORE | | RATINGS | SCORE |
|----|-------------|---------|-------|-------------|---------|-------|
| 1 | HODINA, J | 2023 32 | 1 | JASAITIS, A | 2175-32 | 0 |
| 2 | SMILEY, R | 2002 0 | 1F | LOSOFF, A | 1996 0 | OF |
| 3 | ATKINSON, J | 1845-14 | 0 | FRIESEMA, W | 1982 14 | 1 |
| 4 | WENTLING, C | 1513-20 | 0 | DENG, J | 1554 20 | 1 |
| 5 | KRULL, E | 1389 13 | 1 | BERNARD, D | 1239-13 | 0 |
| 6 | HANIPER, P | 0 0 | 1 | RIEDERER, D | 1086 0 | 0 |

| | | | | | |
|-----------|---------------------|---------|---------------------|-------------|-----------|
| 02-OCT-91 | CHICAGO POST OFFICE | 4 | CHICAGO MERC. EXCH. | 2 | |
| ROUND 1 | | | | | |
| BD | | RATINGS | SCORE | RATINGS | SCORE |
| 1 | INUMERABLE, F | 2224 8 | 1 | ZEIDEL, J | 1964 -8 0 |
| 2 | MARCOWKA, R | 2007 5 | 1 | FRANK, M | 1731 -8 0 |
| 3 | COOPER, W | 1678 20 | 1 | SULLIVAN, C | 1635-20 0 |
| 4 | CARTER, L | 1500-34 | 0 | COTE, J | 1311 34 1 |
| 5 | HOWARD, W | 1177 26 | 1 | GAVIN, L | 1231-26 0 |
| 6 | | 0 0 | 0F | BAKER, LR | 0 0 1F |

| | | | | | |
|-----------|----------------|---------|-------|------------|------------|
| 07-OCT-91 | ALUMNI CENTRAL | 2 | SEARS | 4 | |
| ROUND 1 | | | | | |
| BD | | RATINGS | SCORE | RATINGS | SCORE |
| 1 | CZERNIECKI, A | 2267-14 | 0 | REYES, R | 2288 14 1 |
| 2 | COX, M | 2013 2 | .5 | GOLLA, R | 2035 -1 .5 |
| 3 | RZESZUTKO, R | 1977 4 | .5 | LATIMER, E | 2027 -2 .5 |
| 4 | LITVINAS, A | 1773-13 | .5 | CHAN, H | 1563 13 .5 |
| 5 | CHARKOVSKY, R | 1693 -7 | .5 | MORTON, B | 1585 7 .5 |
| 6 | SMITH, RW | 0 0 | 0F | BALASE, E | 1364 0 1F |

| | | | | | |
|-----------|------------------|---------|------------------|-------------|-----------|
| 09-OCT-91 | COLUMBIA COLLEGE | 1 | CONTINENTAL BANK | 5 | |
| ROUND 1 | | | | | |
| BD | | RATINGS | SCORE | RATINGS | SCORE |
| 1 | MCALISTER, K | 1835 24 | 1 | FRAATS, D | 1853-24 0 |
| 2 | KOSTECKA, K | 1520 -6 | 0 | KOGAN, G | 1844 6 1 |
| 3 | TURNER, R | 0 0 | 0 | PAROAN, E | 1765 0 1 |
| 4 | BRANCH, Y | 0 0 | 0 | SIEGEL, R | 1541 0 1 |
| 5 | CELANDER, C | 0 0 | 0 | PATEL, R | 1430 0 1 |
| 6 | ROQUE, P | 0 0 | 0 | MCINTOSH, S | 1164 0 1 |

| | | | | | |
|-----------|---------------------|---------|------------------|--------------|-----------|
| 16-OCT-91 | CHICAGO MERC. EXCH. | 2.5 | COLUMBIA COLLEGE | 3.5 | |
| ROUND 2 | | | | | |
| BD | | RATINGS | SCORE | RATINGS | SCORE |
| 1 | SULLIVAN, C | 1615 -9 | 0 | MCALISTER, K | 1859 9 1 |
| 2 | FRANK, M | 1723 10 | 1 | KOSTECKA, K | 1514-10 0 |
| 3 | COTE, J | 1345 0 | 0 | TURNER, R | 0 0 1 |
| 4 | RUDDY, J | 1236 0 | 0 | BRANCH, Y | 0 0 1 |
| 5 | BAKER, LR | 0 0 | 1 | RADKE, P | 0 0 0 |
| 6 | GAVIN, L | 1205 0 | .5 | CELANDER, C | 0 0 .5 |

| | | | | | |
|-----------|----------------|---------|------------------|--------------|------------|
| 16-OCT-91 | ALUMNI CENTRAL | 3.5 | CONTINENTAL BANK | 2.5 | |
| ROUND 3 | | | | | |
| BD | | RATINGS | SCORE | RATINGS | SCORE |
| 1 | CZERNIECKI, A | 2253 5 | 1 | NELSON, H | 1967 -7 0 |
| 2 | FRANEK, M | 1854 17 | 1 | PAROAN, E | 1765-17 0 |
| 3 | LITVINAS, A | 1760 28 | 1 | KOGAN, G | 1850-28 0 |
| 4 | CHARKOVSKY, R | 1686-14 | 0 | FRAATS, D | 1829 14 1 |
| 5 | BROTSOS, J | 1583-11 | 0 | DYCKOWSKI, R | 1680 16 1 |
| 6 | BUCHANAN, R | 1480-16 | .5 | ZOELLNER, J | 1196 16 .5 |

09-OCT-91 NORTHROP CORP.
ROUND 1

2

UOP PROCESS DIV.

4

| BD | | RATINGS | SCORE | | RATINGS | SCORE |
|----|----------------|---------|-------|----|---------------|---------------|
| 1 | JAKSTAS, K | 2210 | 3 | .5 | STEVANOVIC, M | 2243 -1 .5 |
| 2 | GOLUMBOVSKI, P | 2152-27 | | 0 | BOLDINGH, E | 2087 27 1 |
| 3 | DIAZ, P | 1979 | 11 | 1 | MICKLICH, F | 1778 -7 0 |
| 4 | BURIAN, D | 1670-20 | | 0 | SAJBEL, P | 1706 20 1 |
| 5 | VIGANTS, A | 1617 | 0 | .5 | SAHLI, E | 0 0 .5 |
| 6 | ELEK, G | 1001 | -4 | 0 | CHEVERESAN, S | 1411 4 1 |
| 7 | DIAZ, P | 1990 | 0 | 1 | BISH, D | 0 0 0 (NORTH) |

10-OCT-91 MOTOROLA
ROUND 1

5.5

KEMPER INSURANCE

.5

| BD | | RATINGS | SCORE | | RATINGS | SCORE |
|----|---------------|---------|-------|----|---------------|---------------|
| 1 | MOYNIHAN, K | 2187 | -5 | .5 | SIWEK, M | 2120 5 .5 |
| 2 | EASTER, R | 2094 | 0 | 1 | OLSEN, A | 0 0 0 |
| 3 | SAMELSON, C | 2080 | 0 | 1 | SHIREY, S | 0 0 0 |
| 4 | WALLACH, C | 2051 | 0 | 1 | GUILLEN, B | 0 0 0 |
| 5 | CIESLEK, D | 2027 | 1 | 1 | CUMMUTA, P | 1377 -1 0 |
| 6 | AUGSBURGER, L | 1791 | 0 | 1F | FILICHIA, T | 0 0 0F |
| 7 | DUNCAN, T | 0 | 0 | 1 | HUNG, N | 0 0 0 (MTRLA) |
| 8 | REVULURI, K | 0 | 0 | 1 | SZAUKELLIS, W | 0 0 0 (MTRLA) |

NORTH DIVISION TOP TEN

| | | |
|----------------|-------|-------|
| STEVANOVIC, M | UOP | 2242C |
| JAKSTAS, K | NORTH | 2213C |
| WONG, P | EXMPL | 2207C |
| MOYNIHAN, K | MTRLA | 2182 |
| SIWEK, M | KEMPR | 2125 |
| GOLUMBOVSKI, P | NORTH | 2125* |
| BOLDINGH, E | UOP | 2114* |
| EASTER, R | MTRLA | 2094 |
| SAMELSON, C | MTRLA | 2080C |
| CREWSE, L | EXMPL | 2066 |

EAST DIVISION TOP TEN

| | | |
|-----------------|-------|-------|
| GILES, M | SEARS | 2430 |
| REYES, R | SEARS | 2302C |
| CZERNIECKI, A | ALUMN | 2258C |
| INUMERABLE, F | PSTOF | 2232 |
| GREGORY, J | PSTOF | 2169 |
| JASAITIS, A | CRT | 2143 |
| WIRTSCHAFTER, D | ALUMN | 2109 |
| HODINA, J | AMCRP | 2055 |
| GOLLA, R | SEARS | 2034C |
| LATIMER, E | SEARS | 2025D |

NEAR WEST DIVISION TOP TEN

| | | |
|---------------|--------|-------|
| LEVINE, D | KNIGHT | 2397 |
| BENEDEK, R | KNIGHT | 2221D |
| GUIO, J | ROYLS | 2168 |
| WARREN, J | CHRGR | 2160D |
| JONES, B | ROCKW | 2149 |
| TEGEL, F | DRGNS | 2128D |
| BERRY, G | KNIGHT | 2079D |
| JACOBS, N | DRGNS | 1989C |
| YOUNG, C | KNIGHT | 1958C |
| DOBROVOLNY, C | ROYLS | 1900 |

FAR WEST DIVISION TOP TEN

| | | |
|--------------|-------|-------|
| KOZLOVSKY, M | FERMI | 2283* |
| STEIN, P | AWEST | 2188 |
| LUDWIG, T | INDNS | 2159 |
| SPIEGEL, L | FERMI | 2105C |
| STINSON, M | INDNS | 2028 |
| BUCHNER, R | INDNS | 2027 |
| ROSE, K | AMOCO | 1975 |
| STOLTZ, B | TYROS | 1958 |
| UNDERWOOD, W | AWEST | 1946C |
| BHOJWANI, C | TYROS | 1942 |

MOST IMPROVED PLAYERS

| | | |
|--------------|-------|----|
| EFRON, D | ROCKW | 34 |
| MCALISTER, K | COLUM | 33 |
| HODINA, J | AMCRP | 32 |
| RAFACZ, T | ROCKW | 30 |
| DOBR, K | CHRGR | 30 |
| BOLDINGH, E | UOP | 27 |
| KANAS, W | JCASE | 26 |
| HOWARD, W | PSTOF | 26 |
| STOLTZ, B | TYROS | 25 |
| MCGRIFF, M | RADIO | 25 |

| NAME | TEAM | W | L | D | RATING | NAME | TEAM | W | L | D | RATING |
|---------------|-------|---|---|---|--------|----------------|-------|---|---|---|--------|
| ALMAZAN, S | NORTH | 0 | 0 | 0 | 0000? | CISKO, G | FERMI | 1 | 0 | 0 | 0000? |
| ANDERSON, CJ | ROYLS | 0 | 1 | 0 | 1241* | COLE, P | FERMI | 1 | 0 | 0 | 0000? |
| ANGLIN, B | SEARS | 0 | 0 | 0 | 1684* | COOPER, B | WASTE | 0 | 2 | 0 | 0000? |
| ATKINSON, J | AMCRP | 0 | 1 | 0 | 1831 | COOPER, W | PSTOF | 1 | 0 | 0 | 1698 |
| AUGSBURGER, L | MTRLA | 0 | 0 | 0 | 1791 | COTE, J | MERC | 1 | 1 | 0 | 1345# |
| AUSTIN, R | ROYLS | 0 | 0 | 1 | 0000? | COX, M | ALUMN | 0 | 0 | 1 | 2015C |
| BAKER, B | FLPRO | 0 | 0 | 0 | 1006 | CREWSE, L | EXMPL | 0 | 0 | 0 | 2066 |
| BAKER, LR | MERC | 1 | 0 | 0 | 0000? | CROWE, R | ROYLS | 0 | 0 | 0 | 1424* |
| BARRON, L | MERC | 0 | 0 | 0 | 0000? | CUMMUTA, P | KEMPR | 0 | 1 | 0 | 1376 |
| BAURAC, D | KNGHT | 0 | 0 | 0 | 1676C | CZERNIECKI, A | ALUMN | 1 | 1 | 0 | 2258C |
| BEARD, G | SECST | 0 | 0 | 0 | 1833 | DAVIDSON, M | SECST | 0 | 0 | 0 | 1641* |
| BECKLEY, S | DRGNS | 0 | 0 | 1 | 1407* | DAWSON, J | KNGHT | 0 | 0 | 1 | 1404 |
| BENEDEK, R | KNGHT | 1 | 0 | 1 | 2221D | DECMAN, S | KNGHT | 0 | 2 | 0 | 1772C |
| BERNARD, D | CRT | 0 | 1 | 0 | 1226* | DENG, J | CRT | 1 | 0 | 0 | 1574# |
| BERRY, G | KNGHT | 0 | 1 | 1 | 2079D | DEWITT, G | ROCKW | 0 | 1 | 0 | 1363C |
| BHOJWANI, C | TYROS | 2 | 0 | 0 | 1942 | DEZONNO, T | ROCKW | 1 | 0 | 0 | 1161# |
| BHOJWANI, R | INDNS | 1 | 0 | 0 | 1767# | DIAZ, P | NORTH | 2 | 0 | 0 | 1990 |
| BISH, D | NORTH | 0 | 1 | 0 | 0000? | DOBR, K | CHRGR | 2 | 0 | 0 | 1595D |
| BLACKMON, E | INDNS | 0 | 0 | 0 | 1703 | DOBROVOLNY, C | ROYLS | 0 | 1 | 0 | 1900 |
| BLAZIE, J | TYROS | 1 | 0 | 1 | 1827 | DOWAT, C | FERMI | 0 | 0 | 0 | 1496 |
| BLOEDOW, P | KEMPR | 0 | 0 | 0 | 1472C | DUNCAN, T | MTRLA | 1 | 0 | 0 | 0000? |
| BLOOM, B | MTRLA | 0 | 0 | 0 | 2007 | DURKEE, D | DRGNS | 1 | 0 | 0 | 1800C |
| BOLDINGH, E | UOP | 1 | 0 | 0 | 2114* | DYCKOWSKI, R | CONBK | 1 | 0 | 0 | 1696# |
| BOOKER, G | RADIO | 0 | 0 | 0 | 0000? | EASTER, R | MTRLA | 1 | 0 | 0 | 2094 |
| BRADY, R | CHRGR | 0 | 0 | 0 | 1355* | EDWARDS, S | EXMPL | 0 | 0 | 0 | 1241 |
| BRANCH, Y | COLUM | 1 | 1 | 0 | 0000? | EFRON, D | ROCKW | 1 | 0 | 0 | 1576 |
| BRIONES, M | UOP | 0 | 0 | 0 | 1706C | ELEK, G | NORTH | 0 | 1 | 0 | 997* |
| BROCKETT, M | SEARS | 0 | 0 | 0 | 1771 | ELIASOFF, D | WASTE | 0 | 1 | 0 | 0000? |
| BRONFELD, A | ALUMN | 0 | 0 | 0 | 1831 | ELLERY, G | RADIO | 1 | 1 | 0 | 1504* |
| BROTSOS, J | ALUMN | 0 | 1 | 0 | 1572D | ERLENBORN, M | AWEST | 1 | 0 | 0 | 1456* |
| BROWN, S | MERC | 0 | 0 | 0 | 0000? | EUSTACE, D | INDNS | 0 | 1 | 0 | 1346* |
| BROZOVICH, J | TYROS | 1 | 0 | 0 | 1781C | FABIJONAS, R | EXCAL | 0 | 0 | 0 | 1785D |
| BUCHANAN, R | ALUMN | 0 | 0 | 1 | 1464C | FELDMAN, A | FLPRO | 0 | 0 | 0 | 1412 |
| BUCHNER, R | INDNS | 0 | 0 | 0 | 2027 | FILICHIA, T | KEMPR | 0 | 0 | 0 | 0000? |
| BUERGER, E | EXCAL | 0 | 0 | 0 | 2082D | FIPPINGER, P | WHEAT | 0 | 0 | 0 | 0000? |
| BURIAN, D | NORTH | 0 | 1 | 0 | 1650 | FLYNN, T | INDNS | 0 | 1 | 0 | 0000? |
| CAMPBELL, C | AMCRP | 0 | 0 | 0 | 1186 | FRAATS, D | CONBK | 1 | 1 | 0 | 1843 |
| CAMPBELL, D | AMOCO | 0 | 0 | 0 | 0000? | FRANEK, M | ALUMN | 1 | 0 | 0 | 1871 |
| CARTER, D | JCASE | 0 | 0 | 0 | 1081* | FRANK, M | MERC | 1 | 1 | 0 | 1733# |
| CARTER, L | PSTOF | 0 | 1 | 0 | 1466 | FRIESEMA, W | CRT | 1 | 0 | 0 | 1996 |
| CEASE, H | FERMI | 1 | 0 | 0 | 0000? | FRISKE, T | EXCAL | 0 | 0 | 0 | 1843 |
| CELANDER, C | COLUM | 0 | 1 | 1 | 0000? | GAINES, I | FERMI | 0 | 0 | 0 | 1749C |
| CHAN, H | SEARS | 0 | 0 | 1 | 1576 | GAMEZ, M | JCASE | 0 | 0 | 0 | 0000? |
| CHARKOVSKY, R | ALUMN | 0 | 1 | 1 | 1672* | GASTON, K | JCASE | 1 | 1 | 0 | 0000? |
| CHEVERESAN, S | UOP | 1 | 0 | 0 | 1415C | GAVIN, L | MERC | 0 | 1 | 0 | 1205 |
| CHIU, H | KNGHT | 1 | 0 | 0 | 1653* | GELBART, S | SECST | 0 | 0 | 0 | 2272 |
| CHOUDRY, A | KEMPR | 0 | 0 | 0 | 0000? | GIBSON, K | AMCRP | 0 | 0 | 0 | 0000? |
| CHRISTIAN, R | DRGNS | 0 | 0 | 0 | 1843C | GILES, M | SEARS | 0 | 0 | 0 | 2430 |
| CIBA, F | SEARS | 0 | 0 | 0 | 1406 | GLICENSTEIN, J | FERMI | 1 | 0 | 0 | 1934 |
| CIESLEK, D | MTRLA | 1 | 0 | 0 | 2028 | GOLLA, R | SEARS | 0 | 0 | 1 | 2034C |

? - UNRATED

- 5 TO 9 RATED GAMES

* - 10 TO 24 RATED GAMES

C - CENTURY CLUB MEMBER

D - DOUBLE CENTURION

| NAME | TEAM | W | L | D | RATING | NAME | TEAM | W | L | D | RATING |
|----------------|--------|---|---|---|--------|--------------|--------|---|---|---|--------|
| GOLUMBOVSKI, P | NORTH | 0 | 1 | 0 | 2125* | KUMRO, D | CHRGR | 0 | 2 | 0 | 1702D |
| GONCHAROFF, N | MTRLA | 0 | 0 | 0 | 1776D | LAMBIRIS, J | KEMPR | 0 | 0 | 0 | 0000? |
| GRAFT, D | AWEST | 0 | 0 | 1 | 1836 | LASKY, J | RADIO | 0 | 2 | 0 | 1374 |
| GREEN, D | KNIGHT | 1 | 0 | 0 | 1816C | LASKY, JIM | RADIO | 0 | 0 | 0 | 1712# |
| GREGORY, J | PSTOF | 0 | 0 | 0 | 2169 | LASKY, N | RADIO | 1 | 1 | 0 | 1458 |
| GROTANS, G | MERC | 0 | 0 | 0 | 1258* | LATIMER, E | SEARS | 0 | 0 | 1 | 2025D |
| GRYPARIS, J | MTRLA | 0 | 0 | 0 | 1364 | LEE, R | TYROS | 0 | 0 | 0 | 0000? |
| GUILLEN, B | KEMPR | 0 | 1 | 0 | 0000? | LEMPA, K | SECST | 0 | 0 | 0 | 1524* |
| GUIO, J | ROYLS | 0 | 0 | 1 | 2168 | LENDI, L | WASTE | 0 | 1 | 0 | 0000? |
| GUTNIK, I | JCASE | 0 | 0 | 0 | 0000? | LESTER, M | MTRLA | 0 | 0 | 0 | 1588 |
| HAHNE, D | ROYLS | 1 | 0 | 0 | 1580 | LEVINE, D | KNIGHT | 0 | 0 | 0 | 2397 |
| HAMILTON, L | AMCRP | 0 | 0 | 0 | 1379# | LITVINAS, A | ALUMN | 1 | 0 | 1 | 1788C |
| HAMMOND, M | CONBK | 0 | 0 | 0 | 1354* | LODER, S | INDNS | 0 | 0 | 0 | 0000? |
| HANIPER, P | AMCRP | 1 | 0 | 0 | 0000? | LORING, S | CONBK | 0 | 0 | 0 | 1982 |
| HARRIS, F | SEARS | 0 | 0 | 0 | 0000? | LOSOFF, A | CRT | 0 | 0 | 0 | 1996 |
| HARRIS, R | FERMI | 1 | 0 | 0 | 1578 | LUDWIG, T | INDNS | 1 | 0 | 0 | 2159 |
| HERMANN, T | WASTE | 0 | 2 | 0 | 0000? | MANILLA, M | AMOCO | 1 | 0 | 0 | 0000? |
| HERNANDEZ, D | MTRLA | 0 | 0 | 0 | 1462 | MARCOWKA, R | PSTOF | 1 | 0 | 0 | 2012C |
| HESS, B | FLPRO | 0 | 0 | 0 | 1548 | MCALISTER, K | COLUM | 2 | 0 | 0 | 1868 |
| HICKS, C | ROYLS | 0 | 0 | 0 | 1461 | MCFARLIN, B | KEMPR | 0 | 0 | 0 | 0000? |
| HILL, R | KNIGHT | 0 | 0 | 1 | 1656 | MCGRIFF, M | RADIO | 2 | 0 | 0 | 1429 |
| HILLIARD, J | CONBK | 0 | 0 | 0 | 0000? | MCINTOSH, S | CONBK | 1 | 0 | 0 | 1164# |
| HILTON, J | MERC | 0 | 0 | 0 | 0000? | MCPHAIL, C | TYROS | 0 | 1 | 0 | 0000? |
| HODINA, J | AMCRP | 1 | 0 | 0 | 2055 | MCQUINN, J | ROCKW | 0 | 0 | 0 | 1539 |
| HOLM, B | WASTE | 0 | 2 | 0 | 1725 | MICKLICH, F | UOP | 0 | 1 | 0 | 1771C |
| HOWARD, W | PSTOF | 1 | 0 | 0 | 1203* | MIKULECKY, B | RADIO | 0 | 1 | 1 | 1286 |
| HUGHES, N | KEMPR | 0 | 0 | 0 | 1825C | MILLER, TT | SEARS | 0 | 0 | 0 | 1543# |
| HUMPF, R | RADIO | 0 | 0 | 0 | 1293* | MITCHAM, L | ROCKW | 0 | 1 | 0 | 1638# |
| HUNG, N | MTRLA | 0 | 1 | 0 | 0000? | MOKHTAR, M | INDNS | 1 | 0 | 0 | 0000? |
| HUTTAR, C | SECST | 0 | 0 | 0 | 2016 | MOLES, J | MTRLA | 0 | 0 | 0 | 1209 |
| INUMERABLE, F | PSTOF | 1 | 0 | 0 | 2232 | MONZANI, A | FLPRO | 0 | 0 | 0 | 1759 |
| ISAACS, D | WASTE | 0 | 2 | 0 | 0000? | MOODY, L | CONBK | 0 | 0 | 0 | 0000? |
| JACOBS, N | DRGNS | 1 | 0 | 0 | 1989C | MORGAN, T | MTRLA | 0 | 0 | 0 | 0000? |
| JAKSTAS, K | NORTH | 0 | 0 | 1 | 2213C | MORRISON, J | KNIGHT | 1 | 0 | 0 | 1728 |
| JAMES, V | TYROS | 1 | 0 | 0 | 0000? | MORTON, B | SEARS | 0 | 0 | 1 | 1592* |
| JASAITIS, A | CRT | 0 | 1 | 0 | 2143 | MOTYCKA, R | JCASE | 0 | 1 | 0 | 1197 |
| JONES, B | ROCKW | 0 | 0 | 0 | 2149 | MOYNIHAN, K | MTRLA | 0 | 0 | 1 | 2182 |
| KALE, S | JCASE | 1 | 0 | 0 | 1469* | NELSON, H | CONBK | 0 | 1 | 0 | 1960 |
| KALIHHER, C | FERMI | 0 | 0 | 0 | 1903 | NELSON, R | WHEAT | 0 | 0 | 0 | 0000? |
| KANAS, W | JCASE | 1 | 0 | 0 | 1291 | O'DELL, DW | RADIO | 0 | 0 | 1 | 1631 |
| KELLOGG, K | KNIGHT | 0 | 0 | 0 | 1675C | OELHAFEN, A | EXMPL | 0 | 0 | 0 | 1316* |
| KELLY, S | DRGNS | 0 | 1 | 0 | 1302* | OGASAWARA, L | MTRLA | 0 | 0 | 0 | 1858 |
| KLINEFELTER, H | JCASE | 1 | 0 | 0 | 1478 | OGASAWARA, R | MTRLA | 0 | 0 | 0 | 1604D |
| KOEPELE, J | TYROS | 0 | 0 | 0 | 0000? | OLSEN, A | KEMPR | 0 | 1 | 0 | 0000? |
| KOGAN, G | CONBK | 1 | 1 | 0 | 1822* | OLUND, P | MTRLA | 0 | 0 | 0 | 1391# |
| KOSTECKA, K | COLUM | 0 | 2 | 0 | 1504 | OSTERLUND, R | EXCAL | 0 | 0 | 0 | 1902 |
| KOZLOVSKY, M | FERMI | 0 | 0 | 0 | 2283* | OTAKAN, V | FLPRO | 0 | 0 | 0 | 0000? |
| KRAKAU, H | EXMPL | 0 | 0 | 0 | 1962 | PARA, A | FERMI | 1 | 0 | 0 | 0000? |
| KRULL, E | AMCRP | 1 | 0 | 0 | 1402* | PARAOAN, E | CONBK | 1 | 1 | 0 | 1748 |
| KUKES, S | AMOCO | 0 | 0 | 0 | 2326# | PATEL, R | CONBK | 1 | 0 | 0 | 1430* |

? - UNRATED

- 5 TO 9 RATED GAMES

* - 10 TO 24 RATED GAMES

C - CENTURY CLUB MEMBER

D - DOUBLE CENTURION

| NAME | TEAM | W | L | D | RATING | NAME | TEAM | W | L | D | RATING |
|---------------|-------|---|---|---|--------|---------------|-------|---|---|---|--------|
| PETERS, P | FLPRO | 0 | 0 | 0 | 1112* | SMILEY, R | AMCRP | 0 | 0 | 0 | 2002 |
| PETWAY, L | PSTOF | 0 | 0 | 0 | 1471* | SMITH, BR | TYROS | 1 | 1 | 0 | 1548 |
| POLIZZANO, S | WHEAT | 0 | 0 | 0 | 0000? | SMITH, JM | SECST | 0 | 0 | 0 | 1196* |
| POMA, D | AMOCO | 1 | 0 | 0 | 0000? | SMITH, N | TYROS | 0 | 0 | 0 | 0000? |
| POTTS, S | WHEAT | 0 | 0 | 0 | 0000? | SMITH, RW | ALUMN | 0 | 0 | 0 | 0000? |
| POYNOR, D | WHEAT | 0 | 0 | 0 | 0000? | SOMBONG, M | CONBK | 0 | 0 | 0 | 1754 |
| PUECHNER, R | KEMPR | 0 | 0 | 0 | 0000? | SOPRYCH, T | AMCRP | 0 | 0 | 0 | 1620C |
| PULTS, J | AMOCO | 0 | 0 | 0 | 1814* | SPIEGEL, L | FERMI | 1 | 0 | 0 | 2105C |
| PYLES, C | WHEAT | 0 | 0 | 0 | 1294# | STAMM, V | CHRGR | 1 | 0 | 0 | 1729D |
| RADAVICIUS, E | CHRGR | 0 | 1 | 1 | 1718C | STEIN, P | AWEST | 0 | 0 | 1 | 2188 |
| RADKE, P | COLUM | 0 | 1 | 0 | 0000? | STEMPINSKI, P | NORTH | 0 | 0 | 0 | 1423 |
| RADULSKI, R | TYROS | 0 | 0 | 0 | 0000? | STEVANOVIC, M | UOP | 0 | 0 | 1 | 2242C |
| RAFACZ, T | ROCKW | 1 | 0 | 0 | 1636 | STINSON, M | INDNS | 0 | 0 | 0 | 2028 |
| RAFACZ, W | ROCKW | 0 | 1 | 0 | 1607 | STOLTZ, B | TYROS | 1 | 0 | 1 | 1958 |
| REED, L | PSTOF | 0 | 0 | 0 | 1737# | STUHLBARG, D | UOP | 0 | 0 | 0 | 1519C |
| REHORST, R | FLPRO | 0 | 0 | 0 | 0000? | SUERTH, F | EXMPL | 0 | 0 | 0 | 1562 |
| REID, C | JCASE | 0 | 1 | 0 | 1237 | SUH, G | AMOCO | 0 | 1 | 0 | 1445# |
| REID, D | MERC | 0 | 0 | 0 | 0000? | SULLIVAN, C | MERC | 0 | 2 | 0 | 1606* |
| REVULURI, K | MTRLA | 1 | 0 | 0 | 0000? | SULLIVAN, J | EXCAL | 0 | 0 | 0 | 2036D |
| REYES, R | SEARS | 1 | 0 | 0 | 2302C | SWIDERSKI, M | CHRGR | 0 | 0 | 1 | 1353C |
| RIEDERER, D | CRT | 0 | 1 | 0 | 1086# | SZAUKELLIS, W | MTRLA | 0 | 1 | 0 | 0000? |
| RINGENBERG, T | AMOCO | 0 | 0 | 0 | 1363* | TATARSKY, J | KEMPR | 0 | 0 | 0 | 1435# |
| RIPPE, D | TYROS | 0 | 0 | 0 | 0000? | TAYLOR, F | WHEAT | 0 | 0 | 0 | 1214* |
| RO, D | CRT | 0 | 0 | 0 | 1502* | TEGEL, F | DRGNS | 0 | 0 | 1 | 2128D |
| ROGERS, N | PSTOF | 0 | 0 | 0 | 1973* | THOMAS, G | TYROS | 0 | 0 | 0 | 1415 |
| ROQUE, P | COLUM | 0 | 1 | 0 | 0000? | THOMAS, J | CHRGR | 0 | 2 | 0 | 1540C |
| ROSE, K | AMOCO | 0 | 0 | 0 | 1975 | THOMPSON, R | FLPRO | 0 | 0 | 0 | 1044 |
| ROSEN, JJ | FERMI | 0 | 0 | 0 | 0000? | TOLPPI, J | WASTE | 0 | 2 | 0 | 0000? |
| ROHING, G | EXCAL | 0 | 0 | 0 | 1433 | TROPP, W | TYROS | 0 | 0 | 0 | 0000? |
| ROSKO, D | SEARS | 0 | 0 | 0 | 0000? | TURNER, R | COLUM | 1 | 1 | 0 | 0000? |
| ROSLEY, D | ROYLS | 0 | 0 | 0 | 1830 | TURPIN, S | INDNS | 0 | 0 | 0 | 0000? |
| RUDDY, J | MERC | 0 | 1 | 0 | 1236* | UNDERWOOD, W | AWEST | 0 | 1 | 0 | 1946C |
| RZESZUTKO, R | ALUMN | 0 | 0 | 1 | 1981 | VAN MEER, J | KEMPR | 0 | 0 | 0 | 1901 |
| SAHLI, E | UOP | 0 | 0 | 1 | 0000? | VAN ZILE, C | UOP | 0 | 0 | 0 | 1379# |
| SAJBEL, P | UOP | 1 | 0 | 0 | 1726 | VELAYUTHAM, S | TYROS | 0 | 0 | 0 | 1305# |
| SAJKOWSKI, D | AMOCO | 0 | 1 | 0 | 1910 | VIGANTS, A | NORTH | 0 | 0 | 1 | 1617 |
| SAMELSON, C | MTRLA | 1 | 0 | 0 | 2080C | WALHOUT, P | WHEAT | 0 | 0 | 0 | 2088 |
| SATTERLEE, D | JCASE | 1 | 0 | 0 | 1632 | WALKER, R | FERMI | 0 | 1 | 0 | 1376C |
| SCHATTKE, N | AMOCO | 0 | 1 | 0 | 0000? | WALLACH, C | MTRLA | 1 | 0 | 0 | 2051 |
| SCHULMAN, R | EXMPL | 0 | 0 | 0 | 1925C | WALLIN, R | AWEST | 1 | 0 | 0 | 1784* |
| SCHWARTZ, M | TYROS | 1 | 1 | 0 | 1076# | WARD, C | DRGNS | 0 | 1 | 0 | 1592D |
| SCHWARTZ, S | SEARS | 0 | 0 | 0 | 1719C | WARREN, J | CHRGR | 1 | 1 | 0 | 2160D |
| SEEGER, S | WHEAT | 0 | 0 | 0 | 0000? | WEISNER, T | RADIO | 0 | 0 | 0 | 1142 |
| SHAFF, R | TYROS | 0 | 0 | 0 | 1538C | WEITZ, R | FLPRO | 0 | 0 | 0 | 1834C |
| SHEU, G | ROYLS | 0 | 1 | 0 | 1330* | WENTLING, C | AMCRP | 0 | 1 | 0 | 1493 |
| SHIREY, S | KEMPR | 0 | 1 | 0 | 0000? | WEST, R | MTRLA | 0 | 0 | 0 | 0000? |
| SIEGEL, R | CONBK | 1 | 0 | 0 | 1541 | WHITE, H | JCASE | 1 | 0 | 0 | 1752 |
| SIMS, B | CRT | 0 | 0 | 0 | 0000? | WHITSITT, S | DRGNS | 0 | 0 | 0 | 1571* |
| SIWEK, M | KEMPR | 0 | 0 | 1 | 2125 | WIENS, P | WHEAT | 0 | 0 | 0 | 1387 |
| SKULSKI, I | EXMPL | 0 | 0 | 0 | 1838 | WINSTON, H | SECST | 0 | 0 | 0 | 1994 |

? - UNRATED

- 5 TO 9 RATED GAMES

* - 10 TO 24 RATED GAMES

C - CENTURY CLUB MEMBER

D - DOUBLE CENTURION

| NAME | TEAM | W | L | D | RATING | NAME | TEAM | W | L | D | RATING |
|-----------------|--------|---|---|---|--------|--------------|-------|---|---|---|--------|
| WIRTSCHAFTER, D | ALUMN | 0 | 0 | 0 | 2109 | ZEFF, T | SEARS | 0 | 0 | 0 | 0000? |
| WONG, P | EXMPL | 0 | 0 | 0 | 2207C | ZEIDEL, J | MERC | 0 | 1 | 0 | 1956 |
| YOUNG, C | KNIGHT | 1 | 0 | 0 | 1958C | ZIMMERMAN, T | TYROS | 0 | 0 | 0 | 0000? |
| ZAROMB, S | KNIGHT | 0 | 0 | 0 | 1480 | ZOELLNER, J | CONBK | 0 | 0 | 1 | 1212 |

? - UNRATED

- 5 TO 9 RATED GAMES

* - 10 TO 24 RATED GAMES

C - CENTURY CLUB MEMBER

D - DOUBLE CENTURION