

**Chicago
Industrial
Chess
League**

**Bulletin 6,
Volume 36
April, 1993**

INSIDE THIS ISSUE

Playoff Announcements

UOP Sponsors Tourney at Ramada O'Hare!

Upcoming Events

**CICL Banquet
Summer League Play**

Spring Business Meeting

A Few Words from the Editor

Annotated Games

2 Squares Column by Marv Cox

CICL Ratings List

NEED INPUT! To make the CICL bulletin even better, we are looking for anyone interested in submitting articles or games. If you are interested, call or write:

Bulletin Editor - James Hodina

Home: 708/799-5571

Work: 312/856-2762

CICL OFFICERS
As of September 10, 1992

Addresses/Phones are listed in order of preference

PRESIDENT	Anthony Jasaitis P.O. Box 664 Bedford Park, IL 60499-0664	312-431-2966 (W)
	Chicago Research & Trading 33rd Floor 440 S. LaSalle Chicago, IL 60605	708-448-4967 (H)
SECRETARY	Leonard Spiegel MS 219 Fermilab Batavia, IL 60510	708-840-2809 (W) 708-377-2675 (H)
TREASURER	Wesley K. Underwood 207 S. Dorchester Ave. Wheaton, IL 60187	708-752-5127 (W) 708-462-0393 (H)
RATINGS CHAIRMAN	Charles Ward 615 S. Lincoln Hinsdale, IL 60521	708-325-3885 (H) 708-979-4599 (W) 708-979-8451 (FAX)
BULLETIN CHAIRMAN	James Hodina 718 Central Park Ave. Flossmoor, IL 60422	312-856-2762 (W) 708-799-5571 (H)
NORTH DIVISION	Leonard Augsburger 16 N. Fiore Vernon Hills, IL 60061	708-632-5102 (W) 708-816-1649 (H)
EAST DIVISION CHAIRMAN	William Cooper 7035 W. Imlay Chicago, IL 60631	312-765-3493 (W) 312-763-1567 (H)
NEAR WEST DIVISION CHAIRMAN	Dan Kumro 802 S. Elmhurst Ave. Mount Prospect, IL 60056	708-259-4981 (H)
FAR WEST DIVISION CHAIRMAN	Irwin Gaines Fermilab - m/s 127 P. O. Box 500 Batavia, IL 60510	708-840-4022 (W)

A WORD FROM THE EDITOR [-ed.]

There is a lot of information and news to pass your way. Everything from the playoff pairings and location to the banquet to the CACL Spring Business Meeting.

PLAYOFFS

First off, here are the seeds for the First Tier (1st & 2nd place) and Second Tier (3rd and 4th place).

First Tier			Second Tier	
<u>Seeding</u>	<u>Name (Div)</u>	<u>Record</u>	<u>Name (Div)</u>	<u>Record</u>
1	Argonne (NW)	10-0-0	Alumni (E)	8-3-0
2	Bell Lab Dragons (FW)	9-0-1	Fermilab (FW)	6-3-0
3	CRT (E)	10-1-1	UOP (N)	5-3-2
4	Motorola (N)	8-1-1	AT&T Chargers (NW)	3-6-1
5	Post Office (E)	9-1-2	Columbia College (E)	7-5-0
6	Bell Lab Royals (FW)	7-2-0	Sears (N)	4-3-3
7	Rockwell (NW)	6-3-1	JI Case (NW)	2-8-0
8	Exemplars (N)	5-3-2	Kemper (N)	4-3-2

N = North NW = Near West FW = Far West E = East

1st Round Pairing (First team is home)

Argonne vs. Royals	Alumni vs. Sears
Dragons vs. Post Office	Fermilab vs. Columbia College
CRT vs. Exemplars	UOP vs. JI Case
Motorola vs. Rockwell	AT&T Chargers vs. Kemper

How were the seedings and pairings made? The 1st place teams in each division were seeded 1-4 based on their won/loss record. The 2nd place teams in each division were then seeded 5-8 based on their won/loss record. This same process was used for the Second Tier for the 3rd and 4th place teams. So why does the North Division have three teams in the Second Tier Playoffs? Good question, thanks for asking. The 4th place team in the Far West Division (which would have been the 8th seed) could not be filled so the team with the highest won/loss percentage not already seeded in the playoffs was awarded the open slot and that was Kemper from the North Division. Finally, the pairings were made by matching the 1st seed against the 5th, 2nd against the 6th, and so on. Adjustments were made to avoid two teams from the same division playing in the first round.

It is the responsibility of both team captains to arrange the first round match. The first match needs to be completed prior to the May 15th, the date for the second and third round. After the match is complete, please turn your results into me as I am the tournament director for the playoffs and will need to prepare the next pairings. Copies of all playoff games must be submitted to me at the tournament. Please bring copies of games played in the first round to the tournament site. The reason for all of this effort is that a playoff tournament book is going to be prepared, graciously, by Dennis Leong. To make this

book complete we need everyone's cooperation in turning in your score sheet. Please cooperate. Carbon copy score sheets are being provided by the league. For the first round, all home teams should have these scores available. Team captains may have already picked these up at the CICAL Spring Business Meeting. If you do not have enough carbon copy score sheets, contact Tony Jasaitis or myself and we will be happy to provide them.

The 2nd and 3rd round playoffs will be held at the Ramada Inn O'Hare, in Rosemont, at the corner of Mannheim and Higgins. The CICAL extends its appreciation to UOP for sponsoring this site. UOP will also provide coffee and cake in the morning. The CICAL had a difficult time in securing a site this year and without the assistance of UOP we might not have had one. We are tentatively assigned rooms in "Salon A." There is an Illinois Chess Association sponsored event at the same location (although in separate rooms). The Ramada O'Hare has been the site of many USCF tournaments, including the recent Midwest Class and Chicago International.

SPRING BUSINESS MEETING HIGHLIGHTS

The CICAL Spring Business Meeting was held at JI Case on April 7, 1993. Lenny Spiegel has provided detailed minutes of the meeting which I encourage you to read. I would like to highlight a few items.

Officers were elected. Wes Underwood will continue as Treasurer and Lenny Spiegel will continue as Secretary next season, both elected by a vote of acclamation. Tony Jasaitis declined a third term and Jim Hodina was nominated and also elected by a vote of acclamation.

Wes Underwood reported that the CICAL financial status is good. Expenditures this season are projected to be within the revenues collected.

Bob Stoltz, Trophy Chairman, has made arrangements for selecting and purchasing trophies to be awarded at the CICAL Banquet. Bob projects an underrun of the amount budgeted for trophies this year.

Skip Kale confirmed that the annual CICAL Banquet will be held Friday, June 18 at Harvey's Prime Rib. To receive the advanced discount price, reservations/cancellations must be made, payment in full, prior to June 3. Please see the full page announcement in this issue.

SUMMER PLAY

A long discussion took place at the CICAL Spring Business Meeting regarding CICAL play over the summer. Particularly, a desire to have individual games (as opposed to team matches) was brought out. I would like to get your feedback on this. Various ideas including the tournament being USCF and CICAL rated, individual game arrangements being made in the similar vein as are regular season matches with one person visiting the others playing site, and a one day tournament were expressed. After discussing previous such tournaments and other details, I think two possibilities exist.

A single one-day tournament. This would be very similar to a regular individual swiss tournament common to USCF. These games would be CICAL rated only. The entry fee/prize fund would be relatively small, but based on entries. The advantages would be that this tournament would be easier to manage and allow for a large group of CICALers to get together for the day. The one draw back is in finding a site. Based on our lack of success in finding a playoff site, it would be most likely that the CICAL would need to pay

for a room at a facility such as a hotel. This money would have to come out of the entry fee.

A sectional spread out over the summer. Sectionals consisting of 4, 6, or even 8 players could be made and played out at over the summer. Everyone interested would submit their entry and then the sectionals would be developed by grouping people with similar ratings together. A decision will need to be made as to whether the sections will be developed from a cross section of all four divisions or to keep play within the division. If enough players were interested, possibly both wishes could be met. Individuals would play a round robin within their section and alternate (based on color) visiting the opponents site, much like in regular CICL match play. It would be up to the individuals to schedule their own match and to submit the results. The advantage is that a special playing site is not needed. However, the administration of the tournament could be difficult and more travel would be required of the players. The administrative effort, however, could be distributed if a "section leader" would volunteer to assist for each section.

Let me know your opinion on this over the next few months and hopefully, if enough interest is expressed, we can get in some games over the summer.

BEST GAME PRIZES

As the season's end is drawing near, I am beginning to review the best game prizes to be awarded to the players for games submitted to the bulletin. Its not too late for submission. As last year, games from the playoffs will be considered this year if submitted in time, otherwise, they will be considered for award next season. Awards will be given for **Best Sacrifice, Best Salvage, Best Upset, Best Endgame, and Best Annotated Game**. So far I have received 12 games eligible for these awards so there is still an opportunity to sneak in and grab an award.

BROTSOS SPEAKS ON CHESS!

On Saturday, June 26th, at 8:00 pm, Chicago Area Mensa will present an illustrated lecture entitled " A Stroll with Caissa: A Brief History of Chess". The speaker will be Mensan (and CICLer) Jim Brotsos. He will touch on the evolution of the moves and rules of chess, but will emphasize the great masters, geniuses and eccentrics, who brought life to the game. If time permits, Jim will recapture the brilliance of the American chess wizard, Paul Morphy, by playing through "Morphy vs Allies - Paris Opera House, 1858".

The talk will be held at the Ramada O'Hare Hotel, 6600 N. Mannheim Road (just north of Higgins Road), Rosemont, Illinois. It will be followed by an evening of socializing, eating, and drinking including wine and beer in a penthouse suite. The admission charge is \$5; the proceeds go to the Mensa of Illinois. Jim Brotsos is a Packing Engineer by profession. He took an interest in chess while a naval officer living in the New York area. When the Illinois Chess Association was being revived in 1961, Jim was elected its first President. He has also served as Treasurer. Jim is a Life Member of the US Chess Federation. He has acted as a Delegate from Illinois and has been a USCF Certified Tournament Director. Jim is a co-founder of the Chicago Industrial Chess League and directed several chess clubs and has been team captain of a number of chess teams. Two years ago, Jim became a member of Chess Collectors International.

APCT CHESS BOOK & SUPPLY SALE

BY APPOINTMENT ONLY — MAY 1 THRU MAY 31

**ALL CHESS BOOKS & SUPPLIES 25% OFF
SOME BOOKS 30%, 40%, 50%, EVEN 60% OFF**

Free book to everyone who
brings this brochure

FOR APPOINTMENT CALL JIM WARREN (708) 246-6665



Visa/MasterCard accepted

Checks accepted with identification



At: 5333 Woodland Ave.

Western Springs, IL 60558

Our reputation and record of service is our best advertisement.

Directions to get here:

Woodland Ave. is three short blocks west of Wolf Rd. The nearest large intersection is Wolf Rd. and 55th St.

Western Springs is accessible from the tollways and expressways that reach the near western suburbs.

From the east: Exit Eisenhower Expy at Wolf Rd. and take south to 54th St., right to Woodland.

From the west: East-West Tollway to Tri-State South, exit at Ogden Ave. East, go to Wolf Rd., then south to 54th St., right to Woodland.

From the South: Exit Tri-State Tollway to Stevenson Expy taking "South--St. Louis Wolf Rd." exit and take Wolf Rd. north to 54th St., left to Woodland.

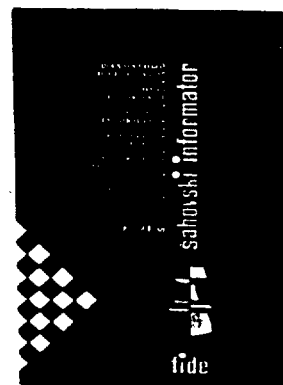
From the Southwest: Exit Stevenson Expy at Joliet Rd. ramp to Wolf Rd., north to 54th St., left to Woodland.

CHESS INFORMANT #56

Games from Sept-Dec 1992-- openings indexed by variation--games have short coded annotations. Fig. alg. notation. The most popular chess series in history!

Only \$22.12 after 25% off!

Earlier Informants also available.



BANQUET ANNOUNCEMENT

NOW WHAT'S YOUR EXCUSE?

Two years in a row. Cost decrease last year and NO cost increase this year. We should have no excuse in making this a record year for attendance. Mark your calendars.

WHAT: 1993 CICL Annual Banquet

WHEN: Friday, June 18, 1993

WHERE: Harvey's Prime Rib
331 East Ogden Avenue
Westmont, Illinois (see attached map)
Telephone: (708) 789-2212

TIME: Dinner 7:00 pm

COST: \$15.00 per person (Includes tax and tip) If received by the banquet chairman, Satis Kale or the league Treasurer, Wes Underwood by May 22. \$18.00 thereafter.

\$1.00 per player for the Speed Chess Tournament to follow the dinner.

Make checks payable to CICL and mail to:

Wes Underwood
207 Dorchester Avenue
Wheaton, Illinois 60187

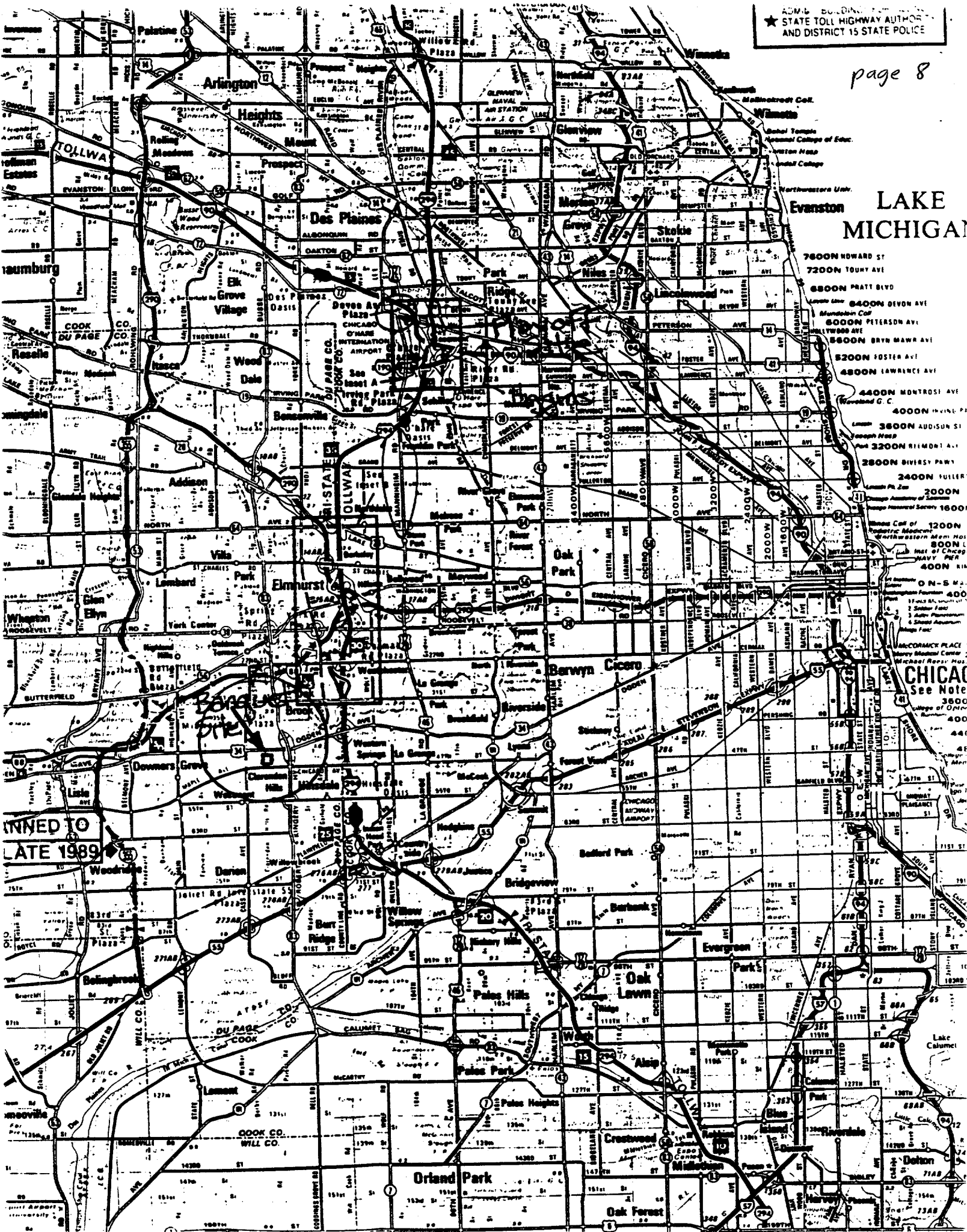
MENU: Roast Chicken, Polish Sausage, Soup, Mixed Green Salad, Buttered Corn, Baked Potato with Sour Cream and CASH BAR upstairs. Call banquet chairman for special dietary requirements.

WHY: Great food, Awards, Entertainment, fun and salute to everyone's effort in a successful season.

WHO: You don't have to be a CICL, ICA, USCF member, a playoff team or an Award winner. The red carpet is for everyone. So now what's your excuse? Don't miss this once a year event. It's a long and painful wait until the next one.

Banquet Chairman
Satish Kale
Tel (708) 887-2372 (W) (708) 325-5253 (H)

LAKE MICHIGAN



- 7600 HOWARD ST
- 7200 TOWN AVI
- 8800 PRATT BVD
- 8400 DEVON AVE
- 6000 PETERSON AVE
- 5800 BRYN MAWR AVE
- 5200 FOSTER AVE
- 4800 LAWRENCE AVE
- 4400 MONTROSI AVE
- 4000 IRVING PL
- 3600 ADDISON ST
- 3200 RIVERSIDE AVE
- 2800 BIRMINGHAM
- 2400 FULLER
- 2000
- 1200
- 800 L
- 400 N-KIN
- ON-S-M
- 400
- 360
- 44
- 791
- 1020
- 880
- 718
- 660
- 55
- 42
- 37
- 32
- 27
- 22
- 17
- 12
- 7
- 2

ANNOUNCED TO
LATE 1989

CHICAGO
See Note
3600
440

CHICAGO INDUSTRIAL CHESS LEAGUE
Spring Business Meeting
Wednesday, April 7, 1993
J. I. Case

Attendees

Jim Brotsos	Alumni Central
Steve Decman	Argonne Knights
Karel Dobr	AT&T Chargers
Dan Eustace	Bell Labs Dragons
Anthony Jasaitis	Chicago Res. & Trdg., President
Satish Kale	J. I. Case
James Hodina	Amoco Corporation
Barry Jones	Rockwell
Algis Litvinas	Alumni Central
Kevin McAlister	Columbia College
Rubin Reyes	Sears
Russ Rzeszutko	Alumni Central
Pat Sajbel	UOP Process Div.
Duane Satterlee	J. I. Case
Lenny Spiegel	Fermilab, Secretary
Bob Stoltz	AT&T Tyros
Wes Underwood	Treasurer
Charlie Ward	Bell Labs Dragons
John Zoellner	Continental Bank

Minutes

1. President Tony Jasaitis called the meeting to order at 7:08 PM.
2. The minutes from the Fall business meeting were approved without revision.
3. Wes Underwood gave the Treasurer's report, which was also summarized in an accompanying document. He noted that six teams had paid their annual dues late. Since most of the yearly expenses stem from the end-of-season awards banquet, it is too early to project the final budget balance. However Wes did compliment the Bulletin Editor (Jim Hodina) on doing a good job in holding expenses down.
3. Bob Stoltz gave the Trophy Chairman's report. He has located a company, J&R Trophies & Awards, near his home which has reasonable prices. This year the trophies will have plaster-filled black plastic bases, as Bob felt that the marble bases are susceptible to chipping. The individual trophies will cost \$8 apiece and team captains should let Bob know if they wish to pay for extra trophies (each qualifying team will receive 6 trophies at no charge). As usual the individual trophies may be substituted for a single, large, team trophy. However the assumption will be that the request is for individual trophies unless Bob hears differently. The order will take 2-3 weeks to process and Bob gave his home number in case there are special requests:

708-224-2984 (he has AT&T Voice Mail)

Given the lower than usual costs for the trophies, Bob projects that the total expense, for all awards, will be less than the original estimate.

Wes Underwood inquired about the past years' practice of allowing a choice of chess equipment in lieu of trophies and Bob indicated that he had no problem with continuing this practice.

Bob proposed that, in view of the projected awards budget surplus, trophies (or plaques) be given this year to the outstanding captains and most valuable players. This proposal was accepted unanimously.

Charlie Ward pointed out that repeating officers, those who have received plaques in the past, should receive updated engravings as opposed to new plaques.

4. Skip Kale reported on preparations for the annual awards banquet. A reservation has been made for the evening of Friday, June 18 at Harvey's Prime Rib in Westmont. The menu will be the same as last year's and the restaurant's per person costs are also unchanged. As usual there will be a price break for early payment (\$15 vs. \$18).

Jim Brotsos mentioned that he had a video tape of the 1925 Soviet silent film "Chess Fever". The film contains fleeting shots of Jose Capablanca and other chess luminaries from that era. Tony said he would be able to supply a VCR. The relevant portion should run about 12-15 minutes.

Russ Rzeszutko volunteered to organize the post-meal speed chess tournament and Tony will assist him.

5. Division reports were presented:

In the East Division Chicago Res. & Trdg. and Chicago Post Office need to resolve first and second places; Alumni Central has clinched third and Amoco Corp. and Columbia College are presently vying for fourth place.

In the Near West Division the Argonne Knights are first followed by Rockwell Int'l, the AT&T Chargers, and J. I. Case.

In the North Division Motorola has clear first place while the Exemplars, Sears, and UOP Process Div. are locked in a battle for second through fourth place.

In the Far West Division the Bell Labs Dragons have clinched first place; the Bell Labs Royals and Fermilab will meet to determine second and third, and fourth place should be decided by a match between the AT&T Tyros and AMOCO Research Labs.

6. Jim Hodina gave a brief Bulletin Editor's report. He announced that the next bulletin will come out shortly following receipt of the minutes from this meeting. This issue will present a summary of the best game awards. He noted that there have been many

well-annotated games this season and he attributed this to the new prize in this category.

A question was asked if it would be possible to publish the lifetime Win-Loss-Draw records for the League Centurions. Charlie Ward replied that this cumulative information was not kept and it would be difficult to cull from past year records.

7. The issue of a playoff site was discussed. We will no longer be able to use J. I. Case as we do not carry liability insurance, which their facilities use policy demands. Tony noted that the cost for single day coverage was prohibitive—about \$500—according to his research from the previous year.

It may still be possible to use the AMOCO Research Labs cafeteria. Jim Hodina said he would look into this.

Next Tony noted that one of his teammates, Al Losoff, was directing a tournament at the OHare Ramada Inn on May 15. According to Al we should be able to “tag along” and rent a smaller room on the same day. Tony thought the cost would be about \$200 but this was predicated on agreeing to eat so many meals at the Ramada. The general feeling was that we should not be locked into such an agreement and that Tony should have general license to spend up to \$300 to secure a room at the Ramada (or any conveniently located facility with similar amenities), without meal strings attached. The fallback position, in the event he is not able to secure a room, would be to rely on individual-site matches.

According to Wes Underwood, the extra \$300 would not be a problem; there is presently about \$1,000 in undesignated funds and this year’s costs are projected to come in under budget. He did express the opinion that we should begin next year’s search process early in the season so as to get a good deal and to be confident of a reservation. Jim Hodina said he would look into different options.

The Tournament Director for the playoffs will be either Jim Hodina or Calvin McAlister, depending on which of their respective teams advances to the playoffs.

Given the uncertainty of all 16 playoff teams (first tier and second ties) participating, especially the second tier teams, Tony proposed that replacement teams be chosen on the basis of their (League-wide) match percentages. This proposal was accepted unanimously. Tony will determine the tie-breaker rule should the need arise.

Finally, it was again stressed that playoff game forfeits must occur in reverse board order (board 6, board 5, ...). If a (non-board 6) player is not present at the start of the match, lower boards should be moved up so as to forfeit the sixth board. The alternative is to gamble that the missing player will arrive. However, if after an hour he has not arrived, then his board AND ALL BOARDS BELOW will be automatically forfeited!

8. By way of new business Tony referred to a petition (copies of which had been distributed) calling for channel 11 (WTTW) to resume airing chess related programs. Both Charlie Ward and Wes Underwood expressed the opinion that the petition format was inappropriate and Charlie suggested that a polite letter, written on CICL letterhead and displaying our corporate connections, would have a better effect. The consensus was to not pursue the petition effort.

Skip Kale inquired if it would be beneficial to advance the deadline for the payment of annual dues. Wes Underwood thought that this was unnecessary; that most teams do pay in time and that it is still early in the season when the late teams pay up.

Skip then asked about the possibility of having our games USCF rated. A long discussion ensued but it quickly emerged that the main barrier to this idea is that it is necessary, by USCF rules, for all participating players to be USCF members. There was some discussion of having Summer league play where the participating members would all have USCF status. Even then there are several requirements and (minor) charges which would have to be addressed. Jim Hodina said he would present the idea in the next bulletin and field the responses.

9. The following League offices were voted upon:

Treasurer: Wes Underwood was nominated and re-elected by acclamation.

Secretary: Lenny Spiegel was nominated and re-elected by acclamation.

President: Tony Jasaitis declined to run again. Jim Hodina was nominated and elected by acclamation.

Jim Brotsos voiced his appreciation for Tony's efforts as president and this was heartily endorsed by the meeting attendees.

[As an aside, Jim noted that he is scheduled to give a talk at the OHare Ramada Inn at 8 PM on Saturday, June 26, on the history of chess. He thought the talk, which is addressed to a MENSA chapter, would be of general interest. Admission is \$5.]

Jim Hodina mentioned that it was likely that Len Weber will serve as the new Bulletin Editor.

10. The meeting was adjourned at 8:49 PM.

Lenny Spiegel
CICL Secretary

CHICAGO INDUSTRIAL CHESS LEAGUE
MID-YEAR TREASURER'S REPORT

Cash Receipts and Disbursements for 1992-1993 (through 4/6/93):

Beginning Cash Balance, August 1992 (Notes A,I)	2413.26
Cash Receipts (through 4/6/93):	
Basic Team Dues	888.37 (Note B)
Late Dues Payment Penalty	35.00 (Note C)
Basic Team Bulletin Subscr's	364.00 (Note D)
Individual Bulletin Subscr's	42.00 (Note E)
Team Banquet Guarantees	486.00 (Note F)
Savings Account Interest	59.38

Total Cash Receipts	1874.75
Total Cash Available for Disbursement	4288.01
Cash Disbursements (through 4/6/93):	
Bulletin Publ & Mailing	168.04 (Note G)
USCF/ICA Dues	55.00
Trophies/Awards Deposit	375.00
Banquet Deposit	300.00
Team Championship Subsidy	20.00
Miscellaneous Expense	34.87

Total Cash Disbursements	(952.91)
Current Cash Balance, April 6, 1993 (Notes H,I)	3335.10

Notes:

- A \$67.63 of this amount is prepayment of 1992-1993 team dues.
- B 26 teams @ \$33.00; 1 team @ \$30.37; 1 team prepaid
- C 5 teams @ \$5.00; 1 team @ \$10.00
- D 26 regular subscriptions @ \$14.00; 1 subscription prepaid
- E 7 individual subscriptions @ \$6.00
- F 27 teams @ \$18.00; 1 team prepaid
- G This amount does not reflect unreimbursed amounts as of 4/6/93
- H Checking Account: \$167.81; Savings Account: \$3167.29
- I \$1400.00 of this amount is reserved for the eventual purchase of a new computer (to maintain ratings, standings, etc.).

Respectfully Submitted,


Wesley K. Underwood, Treasurer
April 7, 1993

Sicilian Defense

WHITE: Greg Berry (2091)

BLACK: Satish Kale (1620)

Argonne Knights vs. JI Case

Annotations by Tony Jasaitis

1.e4, c5 2.Nf3, Nc6 3.Nc3, d6 4.Bb5. Non-standard lines against the very popular Sicilian Defense have become *standard*.

4..., Bd7 5.Nxc6, Bxc6 6.d4, cxd4 7.Qxd4. Early development of the Queen is normally frowned upon because it often allows the opponent to develop pieces with temp. But when it cannot be easily driven away without compromise [the QN has been removed], centralization of the Queen, even early, can be good.

7..., Nf6 8.Bg5, h6. Better is e6, being willing to recapture on f6 with the g-pawn. The dense pawn mass in the center would provide good defense against penetration. The Black King would find safety with O-O, Kh8, and even Rg7 if necessary. This is a known technique in several variations of the Sicilian.

9.Bxf6, exf6. This leaves the Queen pawn very weak and gives White strong play on the White squares. Although the idea of the prior note is not as attractive now that the h-pawn has moved, it may still be better, with possibly leaving the King in the center or trying to castle long.

10.O-O-O, Qc7 11.Rae1. Nh4-f5 is stronger.

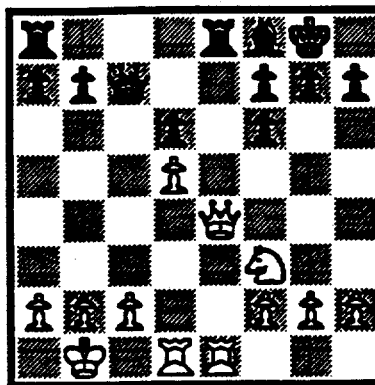
11..., Be7 12.Nd5, Bxd5 13.exd5. This surprising move blocks the pressure on Black's main weakness, but gains serious pressure on the e-file and increases mobility for a

King-side attack. Black, on the other hand, is low on mobility and counterplay.

13..., O-O 14.Qe4. I would choose Nh4 threatening Nf5 and Qg4 as well as Re3, not fearing Black's attempt at counterplay with f5 and Bf6.

14. Rfe8 15.Kb1. Better may be Nd4 with similar threats as in the previous notes.

15..., Bf8. Qd7 first!



After 15..., Bf8

16.Qxe8, Rxe8 17.Rxe8, Qc4 18.Rd2. Now White drifts into a lost position. He should have taken note of the fact that Black's bishop cannot escape against a pair of rooks on the back rank. In the post mortem, Berry felt that this move was a clinker, feeling he should have played 18.c4, Qxc4 19.Rc1 and R(1)c8. Black is not obligated to take on c4, but nevertheless, White should be able to double on the back rank via the e-file.

18..., a5 19.b3, b5 20.Nh4, g6 21.f4, a4 22.Nf3, a3 23.Ra8, b4 24.c4, bxc3 e.p. 25.Rc2, Kg7 26.Ra4, Qxd5 27.Rxa3, Qd1+ 28.Rc1, Qd6+ 29.Rc2, d5 30.Ra4, Bc5 31.Ne1, Qd1+ 32.Rc1, Qd7 33.Nc2, Be3 34.Re1, d4 35.a3, d6 36.Rxe3, Qxc2+ 0-1.

The 2 Squares Column

by Marv Cox

"If one square is attacked more times than it is defended it may fall."

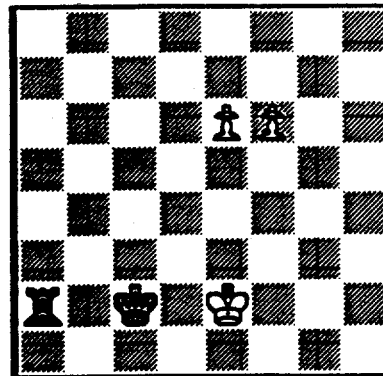


Diagram 62

In diagram 62 White has the classical two united unattacked pawns on the sixth which are supposed to be stronger than a rook. However, there is a tactical line which kills him due to the unfortunate location of his king.

1..., Ra6 2.e7, Re6+ 3.Kf3, Rxf6+ 4.Kg4, Re6 5.e8(Q), Rxe8 and Black wins.

Or back to diagram 62.

1..., Ra6 2.f7, Rxe6+ 3.Kf3, Rf6+ 4.Kg4, Rxf7 and Black wins

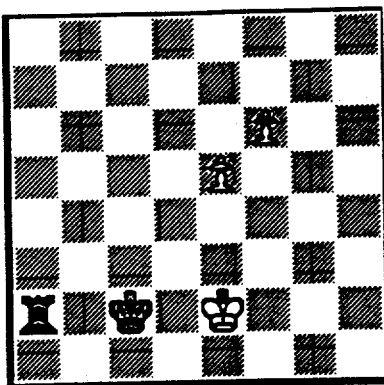


Diagram 63

Diagram 63 is one White move previous to what we had in diagram 62. It's White's move. If he pushes the e pawn to e6 he will lose as per diagram 62. But he pushes the f pawn to f7.

1.f7, Ra8. Forced to prevent f8.

2.e6, Rf8 3.e7, Rxf7 4.e8 (Q) and White wins.

Now back to diagram 63 again. Change the pawn positions to e6 and f5.

1.e7, Ra8 2.f6, Re8 3.Kf3. The king must leave the e-file to win. So see that sometimes united pawns on the pawns on the sixth when your opponent has a rook. But not when the opposing piece is a bishop or knight, which you can work out for yourself.

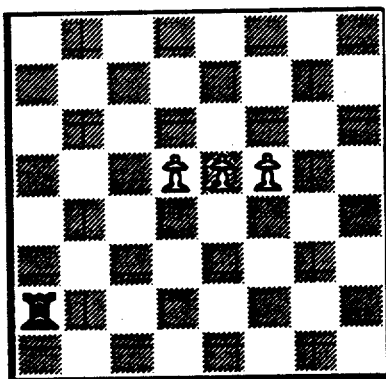


Diagram 64

We next logically wonder if three united unattacked pawns on the fifth are stronger than a rook. After all. It takes 2 moves for a rook to attack and then capture a pawn. During this time each of the remaining pawns can move up to the sixth rank (or to the fifth and seventh). Diagram 64 illustrates the start position. There are no kings shown. Black has 3 options for his first move: Ra5 or Rd2 or Re2.

1..., Ra5 2.e6, Rxd5 3.f6. White will queen.

1..., Rd2 2.e6, Rxd5 3.f6. White will queen.

1..., Re2 2.e6, Re5 3.f6. White will queen.

Next we wonder if all three pawns have to be united. Let's go back to diagram 64 and move to the f5 pawn to g5. Black again has 3 options.

1..., Rg2 2.e6, Rxd5 3.d6. White will queen.

1..., Rd2 2.d6, d5 3.g6, Rxe5 4.d7, Rd5 5.g7. White will queen.

1..., Ra5 2.g6, Rxd5 3.g7, Rd8 4.e6, Rg8 5.e7. King location determines outcome.

RATINGS CHAIRMAN'S REPORT

Old Match Results

The results from several matches scheduled to be completed earlier in the season have still not been received:

<u>Division</u>	<u>Teams</u>	<u>Round</u>	<u>Date Due</u>
East	PSTOF vs. CTA-ROAD	9	Feb. 28
North	KEMPR vs. FLPRO	8	March 1

If these matches have been played, captains of BOTH teams (per the standard procedure) are requested to submit the results promptly so that players' ratings will not be distorted by having the matches rated out of the sequence in which they were played.

Deadline for Next Bulletin

The next deadline for ratings submission is Saturday, May 1. Use the U.S. mail for submitting match results for the next issue of the Bulletin through April 24; results submitted during the week of April 25 may be faxed to me at 708-979-8451.

-- Charlie Ward
Ratings Chairman

NORTH DIVISION 04-03-1993

TEAM NAME	W	L	D	GAME	MATCH	PCT
				POINTS	POINTS	
MOTOROLA	7	1	1	38.0	7.5	0.833
EXEMPLARS	5	2	2	32.5	6.0	0.667
SEARS	4	2	3	32.0	5.5	0.611
UOP PROCESS DIV.	4	3	2	27.0	5.0	0.556
FRANKLIN-WATTS	3	3	1	24.0	3.5	0.500
KEMPER INSURANCE	2	2	3	20.0	3.5	0.500
FEL-PRO	1	6	0	7.5	1.0	0.143
NORTHROP CORP.	0	7	0	11.0	0.0	0.000

EAST DIVISION 04-03-1993

TEAM NAME	W	L	D	GAME	MATCH	PCT
				POINTS	POINTS	
CHICAGO RES. & TRDG.	10	1	0	50.0	10.0	0.909
CHICAGO POST OFFICE	8	1	1	42.5	8.5	0.850
ALUMNI CENTRAL	8	3	0	42.5	8.0	0.727
COLUMBIA COLLEGE	6	5	0	36.0	6.0	0.545
AMOCO CORP.	6	4	0	30.5	6.0	0.600
CONTINENTAL BANK	3	6	1	23.5	3.5	0.350
CTA ROAD	3	6	0	20.0	3.0	0.333
HULL TRADING CO.	1	6	2	18.5	2.0	0.222
CTA RAIL	0	7	2	17.0	1.0	0.111
CHICAGO MERC. EXCH.	1	7	0	11.5	1.0	0.125

NEAR WEST DIVISION 04-03-1993

TEAM NAME	W	L	D	GAME	MATCH	PCT
				POINTS	POINTS	
ARGONNE KNIGHTS	8	0	0	40.0	8.0	1.000
ROCKWELL INT'L	5	2	1	27.0	5.5	0.688
AT&T CHARGERS	3	5	1	24.0	3.5	0.389
J. I. CASE	2	7	0	23.0	2.0	0.222
A & B RADIO	2	7	0	13.5	2.0	0.222

FAR WEST DIVISION 04-03-1993

TEAM NAME	W	L	D	GAME	MATCH	PCT
				POINTS	POINTS	
BELL LABS DRAGONS	8	0	1	39.5	8.5	0.944
BELL LABS ROYALS	6	1	2	37.5	7.0	0.778
FERMILAB	6	3	0	33.5	6.0	0.667
AMOCO RESEARCH LABS	1	8	0	11.5	1.0	0.111
AT&T TYROS	0	8	1	14.5	0.5	0.056

03-FEB-93	J. I. CASE	2.5	A & B RADIO	3.5	
ROUND 7					
BD		RATINGS	SCORE	RATINGS	SCORE
1	SATTERLEE, D	1719-20	0	O'DELL, DW	1591 30 1
2	WHITE, H	1688 0	0	TYREE, D	0 0 1
3	KALE, S	1620 11	1	LASKY, J	1415-11 0
4	KLINEFELTER, H	1469 -6	.5	LASKY, N	1384 6 .5
5	REID, C	1315-19	0	BOOKER, G	1373 19 1
6	KANAS, W	1305 25	1	MIKULECKY, B	1342-25 0
7	CARTER, D	1074-15	0	POMA, D	1187 15 1 (AMOCO)

03-FEB-93	AT&T CHARGERS	3	ROCKWELL INT'L	3	
ROUND 7					
BD		RATINGS	SCORE	RATINGS	SCORE
1	WARREN, J	2140 0	.5	JONES, B	2135 1 .5
2	RADAVICIUS, E	1690-13	0	RAFACZ, T	1728 20 1
3	DOBR, K	1511 6	.5	RAFACZ, W	1655 -9 .5
4	KUMRO, D	1573-14	0	EFRON, D	1606 20 1
5	THOMAS, J	1523 14	1	MCQUINN, J	1499-21 0
6	BRADY, R	1248 18	1	DEZONNO, T	1184-18 0

05-FEB-93	AMOCO RESEARCH LABS	0	ARGONNE KNIGHTS	6	
ROUND 7					
BD		RATINGS	SCORE	RATINGS	SCORE
1		0 0	OF	0 0	1F
2		0 0	OF	0 0	1F
3		0 0	OF	0 0	1F
4		0 0	OF	0 0	1F
5		0 0	OF	0 0	1F
6		0 0	OF	0 0	1F

18-FEB-93	J. I. CASE	2.5	AT&T CHARGERS	3.5	
ROUND 8					
BD		RATINGS	SCORE	RATINGS	SCORE
1	SATTERLEE, D	1699 -2	0	WARREN, J	2140 1 1
2	WHITE, H	1688-23	0	RADAVICIUS, E	1677 15 1
3	KALE, S	1631 15	1	DOBR, K	1517-10 0
4	KLINEFELTER, H	1463 5	.5	THOMAS, J	1537 -3 .5
5	GASTON, K	1326 -9	0	KUMRO, D	1559 6 1
6	REID, C	1296 21	1	BRADY, R	1266-21 0
(AMOCO) 7	POMA, D	1202 8	.5	KANAS, W	1330 -8 .5 (JCASE)

26-FEB-93	AMOCO RESEARCH LABS	0	FERMILAB	6	
ROUND 8					
BD		RATINGS	SCORE	RATINGS	SCORE
1		0 0	OF	0 0	1F
2		0 0	OF	0 0	1F
3		0 0	OF	0 0	1F
4		0 0	OF	0 0	1F
5		0 0	OF	0 0	1F
6		0 0	OF	0 0	1F

02-MAR-93	BELL LABS ROYALS	3	BELL LABS DRAGONS	3	
ROUND 8					
BD		RATINGS	SCORE	RATINGS	SCORE
1	GUIO, J	2180 20	1	LUDWIG, T	2144-20 0
2	BUCHNER, R	2031-16	0	TEGEL, F	2134 11 1
3	DOBROVOLNY, C	1939-21	0	JACOBS, N	1956 14 1
4	OGASAWARA, L	1806 23	1	ROSLEY, D	1816-23 0
5	BLACKMON, E	1763-21	0	DURKEE, D	1790 14 1
6	HAHNE, D	1575 21	1	WARD, C	1546-14 0
7	ANDERSON, CJ	1327-12	0	PIAO, T	1507 12 1
8	AUSTIN, R	1109 0	OF	EUSTACE, D	1489 0 1F
9	NWABUDE, O	0 0	1	MCCLLOUD, E	1081 0 0

03-MAR-93	AT&T TYROS	2	ROCKWELL INT'L	4	
ROUND 8					
BD		RATINGS	SCORE	RATINGS	SCORE
1	BHOJWANI, C	1933-11	0	JONES, B	2136 11 1
2	STOLTZ, B	1988 9	1	RAFACZ, T	1748 -9 0
3	BLAZIE, J	1861-13	.5	RAFACZ, W	1646 13 .5
4	SMITH, BR	1478 10	.5	EFRON, D	1626-10 .5
5	KARPIERZ, J	0 0	0	MCQUINN, J	1478 0 1
6	SCHWARTZ, M	1058 -5	0	DEWITT, G	1406 5 1

03-MAR-93	A & B RADIO	0	ARGONNE KNIGHTS	6	
ROUND 8					
BD		RATINGS	SCORE	RATINGS	SCORE
1	TYREE, D	1536 -1	0	BENEDEK, R	2240 1 1
2	O'DELL, DW	1621 -3	0	BERRY, G	2091 2 1
3	LASKY, J	1404 -7	0	HILL, R	1690 7 1
4	BOOKER, G	1392 -7	0	BAURAC, D	1678 5 1
5	LASKY, N	1390-13	0	OCKERS, S	1555 13 1
6	MIKULECKY, B	1317-14	0	KINSELLA, G	1463 14 1

17-MAR-93	AT&T CHARGERS	6	A & B RADIO	0	
ROUND 9					
BD		RATINGS	SCORE	RATINGS	SCORE
1		0 0	1F	0 0	OF
2		0 0	1F	0 0	OF
3		0 0	1F	0 0	OF
4		0 0	1F	0 0	OF
5		0 0	1F	0 0	OF
6		0 0	1F	0 0	OF

17-MAR-93	AT&T TYROS	2	BELL LABS DRAGONS	4	
ROUND 9					
BD		RATINGS	SCORE	RATINGS	SCORE
1	STOLTZ, B	1997-13	0	TEGEL, F	2145 9 1
2	BHOJWANI, C	1922 26	1	JACOBS, N	1970-17 0
3	THOMAS, G	1501 -7	0	DURKEE, D	1804 4 1
4	SHAFF, R	1549 14	1	WARD, C	1532-14 0
5	SMITH, BR	1488-20	0	PIAO, T	1519 20 1
6	RADULSKI, B	0 0	0	EUSTACE, D	1489 0 1

17-MAR-93 FERMILAB
ROUND 9

4 J. I. CASE

2

BD	RATINGS	SCORE	RATINGS	SCORE
1 SPIEGEL, L	2032 4	1	SATTERLEE, D	1697 -4 0
2 HEINRICH, J	1910-15	.5	KALE, S	1646 15 .5
3 GAINES, I	1748 -4	.5	WHITE, H	1665 6 .5
4 CISKO, G	1602 14	1	KLINEFELTER, H	1468-14 0
5 PARA, A	1606 7	1	KANAS, W	1322 -7 0
6 WALKER, R	1368-23	0	MOTYCKA, R	1154 35 1
7 MEDINA, P	0 0	0	GASTON, K	1317 0 1

23-MAR-93 AMOCO RESEARCH LABS
ROUND 9

0 BELL LABS ROYALS

6

BD	RATINGS	SCORE	RATINGS	SCORE
1	0 0	OF	0 0	1F
2	0 0	OF	0 0	1F
3	0 0	OF	0 0	1F
4	0 0	OF	0 0	1F
5	0 0	OF	0 0	1F
6	0 0	OF	0 0	1F

17-FEB-93 MOTOROLA
ROUND 6

3.5 FRANKLIN-WATTS

2.5

BD	RATINGS	SCORE	RATINGS	SCORE
1 HASAN, Y	2196-25	0	BENESA, A	2163 25 1
2 MELNIKOV, I	2224 23	1	WEBER, L	2236-23 0
3 WALLACH, C	2082-15	0	GAZMEN, E	2210 15 1
4 SAMELSON, C	1993 0	.5	SOLLANO, E	1994 -1 .5
5 AUGSBURGER, L	1869 0	1	PURDLE, D	0 0 0
6 FAHRENHOLTZ, S	1750 6	1	SANCHEZ, R	1435 -6 0
7 GONCHAROFF, N	1778 0	1	WEST, R	0 0 0 (MTRLA)

25-FEB-93 SEARS
ROUND 7

2 EXEMPLARS

4

BD	RATINGS	SCORE	RATINGS	SCORE
1 REYES, R	2307-19	0	WONG, P	2205 19 1
2 GOLLA, R	2029 17	1	BLOOM, B	2074-25 0
3 LATIMER, E	2033-16	0	SULLIVAN, J	2018 16 1
4 BROCKETT, M	1861-17	0	OSTERLUND, R	1940 17 1
5 WELTER, P	0 0	0	UNDERWOOD, W	1971 0 1
6 MILLER, TT	1560 27	1	SUERTH, F	1630-27 0

03-MAR-93 NORTHROP CORP.
ROUND 6

1.5 FEL-PRO

4.5

BD	RATINGS	SCORE	RATINGS	SCORE
1 JAKSTAS, K	2155-12	.5	WEITZ, R	1768 12 .5
2 GOLUMBOVSKI, P	2104 1	1	FELDMAN, A	1405 -1 0
3 DIAZ, P	2021 0	OF	THOMPSON, R	1079 0 1F
4 VIGANTS, A	1656-35	0	DEARDORFF, M	1440 35 1
5 REICHERT, P	1645 0	OF	NISHIMURA, K	0 0 1F
6 ALMAZAN, S	1344 0	OF	BAKER, B	1074 0 1F
(FLPRO) 7 NISHIMURA, K	0 0	1	THOMPSON, R	1079 0 0

04-MAR-93 SEARS	2.5	UOP PROCESS DIV.	3.5
ROUND 8			
BD	RATINGS	SCORE	RATINGS SCORE
1 REYES, R	2288 13	1	STEVANOVIC, M 2250-13 0
2 GOLLA, R	2046-12	0	BOLDINGH, E 2122 18 1
3 LATIMER, E	2017-14	0	BUERGER, E 2040 14 1
4 BROCKETT, M	1844 16	1	SAJBEL, P 1748-16 0
5 MORTON, B	1580-14	0	MICKLICH, F 1720 9 1
6 MILLER, TT	1587 8	.5	SAHLI, E 1705 -8 .5

11-MAR-93 EXEMPLARS	2	MOTOROLA	4
ROUND 8			
BD	RATINGS	SCORE	RATINGS SCORE
1 WONG, P	2224 0	1F	MELNIKOV, I 2247 0 0F
2 BLOOM, B	2049 8	.5	HASAN, Y 2171 -8 .5
3 SULLIVAN, J	2034-14	0	WALLACH, C 2067 20 1
4 OSTERLUND, R	1957-17	0	CIESLEK, D 2036 17 1
5 UNDERWOOD, W	1971-14	0	SAMELSON, C 1993 14 1
6 SUERTH, F	1603 11	.5	GONCHAROFF, N 1778 -5 .5
7 OELHAFEN, A	1289-11	0	HUNG, N 1475 11 1
8 EDWARDS, S	1236 31	1	OLUND, P 1373-31 0
(MTRLA) 9 OLUND, P	1342-14	0	HUNG, N 1486 14 1

25-MAR-93 UOP PROCESS DIV.	3	MOTOROLA	3
ROUND 9			
BD	RATINGS	SCORE	RATINGS SCORE
1 STEVANOVIC, M	2237 15	1	MELNIKOV, I 2247-23 0
2 BOLDINGH, E	2140-21	0	HASAN, Y 2163 21 1
3 BUERGER, E	2054 16	1	WALLACH, C 2087-25 0
4 SAJBEL, P	1732 17	.5	CIESLEK, D 2053-17 .5
5 MICKLICH, F	1729 10	.5	SAMELSON, C 2007-10 .5
6 SAHLI, E	1697-19	0	FAHRENHOLTZ, S 1756 19 1
7 LIKHTEREV, M	0 0	1	GONCHAROFF, N 1773 0 0
8 CHEVERESAN, S	1390 29	1	HUNG, N 1500-29 0
9 VAN ZILE, C	1396 0	0	WEST, R 0 0 1

01-APR-93 EXEMPLARS	3	SEARS	3
ROUND 9			
BD	RATINGS	SCORE	RATINGS SCORE
1 WONG, P	2224-12	0	REYES, R 2301 12 1
2 CREWSE, L	2039 0	0F	GOLLA, R 2034 0 1F
3 SULLIVAN, J	2020-16	0	LATIMER, E 2003 16 1
4 UNDERWOOD, W	1957 11	1	BROCKETT, M 1860-16 0
5 OSTERLUND, R	1940 5	1	MILLER, TT 1595 -5 0
6 SUERTH, F	1614 0	1	WELTER, P 0 0 0

04-FEB-93 CONTINENTAL BANK	4	CHICAGO MERC. EXCH.	1
ROUND 9			
BD	RATINGS	SCORE	RATINGS SCORE
1 KOGAN, G	1806 0	0F	ZEIDEL, J 1951 0 0F
2 DYCZKOWSKI, R	1623-16	0	FRANK, M 1720 16 1
3 SIEGEL, R	1454 26	1	SULLIVAN, C 1516-26 0
4 HAMMOND, M	1344 20	1	COTE, J 1303-20 0
5 MCINTOSH, S	1147 23	1	BAKER, LR 1155-23 0
6 GANSER, A	0 0	1	HILTON, J 0 0 0

17-FEB-93 CHICAGO POST OFFICE	5	HULL TRADING CO.	1
ROUND 5			
BD	RATINGS	SCORE	RATINGS SCORE
1 INUMERABLE, F	2112 0	1F	RANGEL, R 1756 0 OF
2 MARCOWKA, R	1994 0	1	JACO, H 1117 0 0
3 COOPER, W	1719 0	1	MARGULIS, A 0 0 0
4 CARTER, L	1569 0	1	FRANCISKOVICH, D 0 0 0
5 HOWARD, W	1404 0	1	YOUNG, R 0 0 0
6 GRIESMEYER, W	1394 0	OF	STEINER, D 0 0 1F

17-FEB-93 AMOCO CORP.	4	COLUMBIA COLLEGE	2
ROUND 9			
BD	RATINGS	SCORE	RATINGS SCORE
1 HODINA, J	2078 11	1	MCALISTER, K 1890-11 0
2 ATKINSON, J	1777 12	1	BURDICK, S 1596-12 0
3 WENTLING, C	1585-24	0	KOSTECKA, K 1557 24 1
4 WEBB, E	0 0	1	HERNANDEZ, DD 1525 0 0
5 HAMILTON, L	1367-27	0	BRANCH, Y 1292 27 1
6 KRULL, E	1453 0	1	STEVENS, J 0 0 0
7 BAER, M	0 0	1	WATSON, W 0 0 0

02-MAR-93 AMOCO CORP.	1	CHICAGO POST OFFICE	5
ROUND 10			
BD	RATINGS	SCORE	RATINGS SCORE
1 HODINA, J	2089 2	.5	INUMERABLE, F 2112 -2 .5
2 ATKINSON, J	1789 0	OF	MARCOWKA, R 1994 0 1F
3 WENTLING, C	1561 10	.5	COOPER, W 1719-10 .5
4 WEBB, E	0 0	0	CARTER, L 1569 0 1
5 KRULL, E	1453-26	0	HOWARD, W 1404 26 1
6 BAER, M	0 0	0	GRIESMEYER, W 1394 0 1

03-MAR-93 ALUMNI CENTRAL	3	CTA RAIL	2
ROUND 9			
BD	RATINGS	SCORE	RATINGS SCORE
1 COX, M	2037-28	0	MATTHEWS, J 1572 42 1
2 LITVINAS, A	1685 0	1	CURRY, G 0 0 0
3 CHARKOVSKY, R	1632 0	0	JARRETT, T 0 0 1
4 DAVIDSON, M	1685 0	1	NOWAK, W 0 0 0
5 BROTSOS, J	1540 0	1	HOOKER, L 0 0 0
6	0 0	OF	0 0 OF

09-MAR-93 ALUMNI CENTRAL	4.5	CHICAGO RES. & TRDG.	1.5
ROUND 10			
BD	RATINGS	SCORE	RATINGS SCORE
1 COX, M	2009 6	.5	FRIESEMA, W 2165-10 .5
2 FRANEK, M	1941 16	.5	JASAITIS, A 2249-11 .5
3 LEONG, D	1945 25	1	LOSOFF, A 1978-25 0
4 LITVINAS, A	1685 23	1	BARGERSTOCK, D 1876-34 0
5 CHARKOVSKY, R	1632 3	.5	DENG, J 1677 -3 .5
6 BROTSOS, J	1540 0	1	CIMMARRUSTI, A 0 0 0

10-MAR-93 HULL TRADING CO.

3

CONTINENTAL BANK

3

ROUND 10

BD		RATINGS	SCORE		RATINGS	SCORE
1	RANGEL, R	1756-16	0	FRAATS, D	1858 16	1
2	YOUNG, R	0 0	0	KOGAN, G	1806 0	1
3	NAUGHTON, T	0 0	0	PARAOAN, E	1756 0	1
4	MARGULIS, A	0 0	1	DYCKOWSKI, R	1607 0	0
5	JACO, H	1117 0	1F	HILLIARD, J	0 0	0F
6	FRANCISKOVICH, D	0 0	1	GANSER, A	0 0	0

10-MAR-93 CTA ROAD

1

COLUMBIA COLLEGE

5

ROUND 10

BD		RATINGS	SCORE		RATINGS	SCORE
1	WILSON, A	1566 -6	0	MCALISTER, K	1879 6	1
2	SMITH, G	1566 29	1	PRATTS, M	1663-29	0
3	SLAUGHTER, S	0 0	0	KOSTECKA, K	1581 0	1
4	JONES, M	1371-13	0	HERNANDEZ, DD	1525 13	1
5	HARRIS, FF	0 0	0F	BRANCH, Y	1319 0	1F
6	THOMPSON, T	0 0	0F	SPECK, D	1317 0	1F

17-MAR-93 CHICAGO RES. & TRDG.

4.5

COLUMBIA COLLEGE

1.5

ROUND 11

BD		RATINGS	SCORE		RATINGS	SCORE
1	FRIESEMA, W	2155-15	.5	MCALISTER, K	1885 15	.5
2	JASAITIS, A	2238 0	1	STEVENS, J	0 0	0
3	LOSOFF, A	1953 6	1	PRATTS, M	1634 -6	0
4	BARGERSTOCK, D	1842 7	1	HERNANDEZ, DD	1538 -7	0
5	BERNARD, D	1290 24	1	BRANCH, Y	1319-24	0
6	MATHEWS, B	0 0	0	SPECK, D	1317 0	1

23-MAR-93 CHICAGO POST OFFICE

3.5

ALUMNI CENTRAL

2.5

ROUND 11

BD		RATINGS	SCORE		RATINGS	SCORE
1	INUMERABLE, F	2110 -7	.5	COX, M	2015 4	.5
2	MARCOWKA, R	1994 0	1F	LEONG, D	1970 0	0F
3	MAREMA, D	1958 22	1	FRANEK, M	1957-22	0
4	COOPER, W	1709-15	0	BRONFELD, A	1836 15	1
5	CARTER, L	1569-14	0	LITVINAS, A	1708 9	1
6	HOWARD, W	1430 34	1	CHARKOVSKY, R	1635-34	0

NORTH DIVISION TOP TEN

CUSI, R	FRANK 2437
REYES, R	SEARS 2313C
STEVANOVIC, M	UOP 2252C
SIWEK, M	KEMPR 2237
GAZMEN, E	FRANK 2225
MELNIKOV, I	MTRLA 2224
WEBER, L	FRANK 2213
WONG, P	EXMPL 2212C
BENESA, A	FRANK 2188
HASAN, Y	MTRLA 2184

EAST DIVISION TOP TEN

JASAITIS, A	CRT 2238C
CZERNIECKI, A	ALUMN 2224C
FRIESEMA, W	CRT 2140
ALFARO, C	ALUMN 2118*
GREGORY, J	PSTOF 2117
INUMERABLE, F	PSTOF 2103
HODINA, J	AMCRP 2091
LORING, S	CONBK 2031
SMILEY, R	AMCRP 2024
COX, M	ALUMN 2019C

NEAR WEST DIVISION TOP TEN

LEVINE, D	KNIGHT 2381
BENEDEK, R	KNIGHT 2241D
JONES, B	ROCKW 2147
WARREN, J	CHRGR 2141T
BERRY, G	KNIGHT 2093D
YOUNG, C	KNIGHT 1968C
GREEN, D	KNIGHT 1844C
RAFACZ, T	ROCKW 1739
STAMM, V	CHRGR 1729D
MORRISON, J	KNIGHT 1728

FAR WEST DIVISION TOP TEN

GUIO, J	ROYLS 2200
KOZLOVSKY, M	FERMI 2198
TEGEL, F	DRGNS 2154D
LUDWIG, T	DRGNS 2124
DORIGO, T	FERMI 2080
SPIEGEL, L	FERMI 2036C
STINSON, M	ROYLS 2028
BUCHNER, R	ROYLS 2015
STOLTZ, B	TYROS 1984
ROSE, K	AMOCO 1980

MOST IMPROVED PLAYERS

HOWARD, W	PSTOF 150
KALE, S	JCASE 138
HERNANDEZ, DD	COLUM 102
CISKO, G	FERMI 94
MATTHEWS, J	RAIL 88
RANGEL, R	HULL 81
PAAUWE, N	AMOCO 76
PIAO, T	DRGNS 74
SIWEK, M	KEMPR 72
BROCKETT, M	SEARS 72

NAME	TEAM	W	L	D	RATING	NAME	TEAM	W	L	D	RATING
ABRAHAM, T	RAIL	2	3	0	1519	CARTER, L	PSTOF	3	2	0	1555
ADAMI, S	UOP	1	2	0	0000?	CEASE, H	FERMI	0	0	0	0000?
ALFARO, C	ALUMN	0	1	0	2118*	CELANDER, C	COLUM	0	0	0	0000?
ALMAZAN, S	NORTH	0	0	0	1344#	CHAN, H	SEARS	0	0	0	1551
ALONSO, G	ROYLS	0	0	0	0000?	CHARKOVSKY, R	ALUMN	3	3	2	1601*
ALPER, T	COLUM	1	0	0	0000?	CHEVERESAN, S	UOP	1	0	0	1419C
ANDERSON, CJ	ROYLS	3	4	0	1315*	CHIU, H	KNGHT	0	0	0	1653*
ATKINSON, J	AMCRP	3	3	1	1789	CHOUDRY, A	KEMPR	0	0	0	0000?
AUGSBURGER, L	MTRLA	5	0	0	1869	CHRISTIAN, R	DRGNS	1	0	0	1837C
AUSTIN, R	ROYLS	2	0	1	1109#	CIBA, F	SEARS	0	0	2	1385
BAER, M	AMCRP	3	4	0	0000?	CIESLEK, D	MTRLA	2	1	2	2036
BAKER, B	FLPRO	0	5	1	1074	CIMMARRUSTI, A	CRT	3	2	0	1266#
BAKER, LR	MERC	2	3	0	1132#	CISKO, G	FERMI	5	1	2	1616*
BALASE, E	SEARS	1	0	0	1364*	COBLEIGH, M	ROAD	2	0	1	0000?
BARGERSTOCK, D	CRT	6	2	2	1849	COLE, P	FERMI	0	0	0	0000?
BARGYH, J	COLUM	0	2	0	0000?	COLEMAN, O	ROAD	0	0	0	0000?
BAURAC, D	KNGHT	5	0	0	1683C	COLEMAN, T	FLPRO	0	0	0	0000?
BEARD, G	ALUMN	0	0	0	1805	COOPER, B	WASTE	0	0	0	0000?
BECKLEY, S	DRGNS	0	0	0	1475*	COOPER, W	PSTOF	6	2	2	1694
BENEDEK, R	KNGHT	5	0	1	2241D	COTE, J	MERC	0	5	1	1283*
BENESA, A	FRANK	4	3	0	2188	COX, M	ALUMN	2	2	4	2019C
BENTLEY, D	COLUM	0	0	0	0000?	CREWSE, L	EXMPL	1	0	0	2039
BERNARD, D	CRT	4	4	0	1314	CROWE, R	ROYLS	0	0	0	1393*
BERRY, G	KNGHT	6	0	0	2093D	CUMBERLAND, M	SEARS	1	0	0	0000?
BEZZUBOV, V	FERMI	0	0	0	0000?	CUMMUTA, P	KEMPR	0	2	0	1372
BHOJWANI, C	TYROS	2	4	0	1948	CURRY, G	RAIL	0	2	0	0000?
BHOJWANI, R	INDNS	0	0	0	1710*	CUSI, R	FRANK	0	0	0	2437
BISH, D	NORTH	0	0	0	0000?	CZERNIECKI, A	ALUMN	0	0	0	2224C
BLACKMON, E	ROYLS	4	2	1	1742	DAVIDSON, M	ALUMN	4	0	0	1685*
BLAZIE, J	TYROS	1	3	2	1848	DAWSON, J	KNGHT	1	0	1	1447
BLOEDOW, P	KEMPR	1	3	1	1489C	DEARDORFF, M	FLPRO	1	4	1	1475#
BLOOM, B	EXMPL	2	2	3	2057	DECMAN, S	KNGHT	3	3	0	1701C
BOLDINGH, E	UOP	4	5	0	2119	DENG, J	CRT	4	0	2	1674
BOOKER, G	RADIO	2	2	0	1385*	DEO, D	KEMPR	1	3	0	0000?
BRADY, R	CHRGR	1	6	0	1245*	DEWITT, G	ROCKW	3	1	1	1411C
BRANCH, Y	COLUM	4	4	0	1295*	DEZONNO, T	ROCKW	3	4	0	1166*
BRIONES, M	UOP	1	1	1	1684C	DIAZ, P	NORTH	1	2	3	2021
BROCKETT, M	SEARS	4	2	1	1844	DOBR, K	CHRGR	2	6	1	1507T
BRONFELD, A	ALUMN	5	1	1	1851	DOBROVOLNY, C	ROYLS	4	1	3	1918
BROTSOS, J	ALUMN	5	2	0	1540D	DONNA, D	MTRLA	0	0	0	0000?
BROWN, R	ROYLS	0	0	0	0000?	DORIGO, T	FERMI	0	0	4	2080
BROWN, S	MERC	0	0	1	0000?	DUNCAN, T	MTRLA	0	0	0	0000?
BROZOVICH, J	TYROS	0	1	2	1738C	DURKEE, D	DRGNS	6	0	1	1808C
BUCHANAN, R	ALUMN	0	0	0	1464C	DYCJKOWSKI, R	CONBK	2	6	0	1607*
BUCHNER, R	ROYLS	0	1	1	2015	EDWARDS, S	EXMPL	2	0	0	1267
BUERGER, E	UOP	4	4	0	2070D	EFRON, D	ROCKW	3	0	1	1616
BURDICK, S	COLUM	4	5	0	1584	ELEK, G	NORTH	0	1	1	1014*
BURIAN, D	NORTH	0	6	0	1614C	ELIASOFF, D	WASTE	0	0	0	0000?
CAPAGATTI, A	ROCKW	0	0	0	0000?	ELLERY, G	RADIO	0	0	0	1487*
CARTER, D	JCASE	0	3	0	1059*	ERLENBORN, M	AWEST	0	0	0	1456*

? - UNRATED
- 5 TO 9 RATED GAMES
* - 10 TO 24 RATED GAMES

C - CENTURY CLUB MEMBER
D - DOUBLE CENTURION
T - TRIPLE CENTURION
Q - QUAD CENTURION

NAME	TEAM	W	L	D	RATING	NAME	TEAM	W	L	D	RATING
EUSTACE, D	DRGNS	5	1	1	1489	HILTON, J	MERC	1	3	0	0000?
FAHRENHOLTZ, S	MTRLA	4	1	0	1775*	HODINA, J	AMCRP	6	1	3	2091
FELDMAN, A	FLPRO	0	5	1	1404	HOLM, B	WASTE	0	0	0	1716
FIGUEROA, A	UOP	0	0	0	0000?	HOOKER, L	RAIL	0	2	0	0000?
FISCHER, P	ROCKW	0	0	0	0000?	HOWARD, W	PSTOF	9	0	0	1464
FLESHMAN, M	ROAD	1	0	0	0000?	HUGHES, L	RAIL	0	0	0	0000?
FLYNN, T	DRGNS	0	0	0	0000?	HUGHES, N	KEMPR	2	0	3	1843C
FOLEY, T	INDNS	0	0	0	0000?	HUMPF, R	RADIO	0	0	0	1293*
FRAATS, D	CONBK	1	3	0	1874	HUNG, N	MTRLA	6	1	0	1471#
FRANCISKOVICH, D	HULL	2	2	0	0000?	INUMERABLE, F	PSTOF	2	3	3	2103
FRANEK, M	ALUMN	6	2	1	1935	ISAACS, D	WASTE	0	0	0	0000?
FRANK, M	MERC	3	2	0	1736*	JACKSON, JJ	ROAD	0	2	0	0000?
FRIESEMA, W	CRT	8	0	2	2140	JACO, H	HULL	0	4	0	1117
GABRIELLO, A	AMOCO	0	3	0	0000?	JACOBS, N	DRGNS	3	1	4	1953C
GAINES, I	FERMI	3	2	2	1744C	JADERBERG, J	RADIO	0	0	0	0000?
GANSER, A	CONBK	1	5	0	0000?	JAKSTAS, K	NORTH	0	1	3	2143C
GASTON, K	JCASE	4	2	0	1317#	JAMES, V	TYROS	0	0	0	0000?
GAVIN, L	MERC	0	1	0	1216	JARRETT, T	RAIL	4	3	0	1644#
GAZMEN, E	FRANK	6	0	1	2225	JASAITIS, A	CRT	8	0	3	2238C
GLICENSTEIN, J	FERMI	0	0	1	1845	JENKINS, M	RADIO	0	1	0	0000?
GLOWACKI, D	RADIO	0	0	0	0000?	JONES, B	ROCKW	5	2	1	2147
GOLLA, R	SEARS	3	1	0	2034C	JONES, M	ROAD	3	5	0	1358#
GOLUMBOVSKI, P	NORTH	1	2	3	2105	JONES, MARC	COLUM	1	1	2	0000?
GONCHAROFF, N	MTRLA	2	1	1	1773Q	KALE, S	JCASE	7	1	1	1661
GRAFT, D	AWEST	0	0	0	1835	KANAS, W	JCASE	3	2	1	1315
GREEN, D	KNGHT	2	1	0	1844C	KARPIERZ, J	TYROS	0	4	1	1083#
GREENE, D	ROCKW	0	1	0	0000?	KASSELBAUM, J	COLUM	0	0	0	0000?
GREER, D	PSTOF	0	0	0	0000?	KAUFMAN, M	KEMPR	1	4	0	0000?
GREGORY, J	PSTOF	0	0	0	2117	KEEFE, E	FLPRO	0	3	0	0000?
GRIEB, S	KEMPR	0	0	0	0000?	KELLY, S	DRGNS	0	0	0	1258
GRIESMEYER, W	PSTOF	5	1	0	1394	KINSELLA, G	KNGHT	1	0	0	1477C
GRYPARIS, J	MTRLA	0	0	0	1404	KLINEFELTER, H	JCASE	1	4	3	1454
GUILLEN, B	KEMPR	0	1	1	1369#	KOGAN, G	CONBK	4	0	0	1806
GUIO, J	ROYLS	5	1	2	2200	KOSTECKA, K	COLUM	4	2	2	1581
HAHNE, D	ROYLS	5	2	0	1596	KOZLOVSKY, M	FERMI	1	1	0	2198
HAMILTON, L	AMCRP	1	6	1	1340*	KRAKAU, H	EXMPL	1	0	0	1964
HAMMOND, M	CONBK	3	2	0	1364	KRULL, E	AMCRP	3	3	3	1427
HAMPER, P	AMCRP	2	3	0	1281#	KUMRO, D	CHRGR	1	6	0	1565D
HARBUZIUK, W	ROCKW	0	0	0	0000?	KUSUMOTO, R	HULL	0	6	0	0000?
HARRIS, FF	ROAD	0	4	1	0000?	LAMBIRIS, J	KEMPR	3	1	0	0000?
HARRIS, R	FERMI	4	1	1	1537	LANG, P	KEMPR	0	0	0	0000?
HASAN, Y	MTRLA	4	2	3	2184	LASKY, J	RADIO	0	5	3	1397
HASKELL, M	KEMPR	0	1	0	0000?	LASKY, JIM	RADIO	0	1	0	1695#
HEINRICH, J	FERMI	0	0	1	1895	LASKY, N	RADIO	1	5	2	1377
HERMANN, T	WASTE	0	0	0	0000?	LATIMER, E	SEARS	3	3	0	2019D
HERNANDEZ, DD	COLUM	7	3	0	1531	LEMBERGER, S	CRT	0	0	0	0000?
HESS, B	FLPRO	0	5	1	1494	LENDI, L	WASTE	0	0	0	0000?
HICKS, C	DRGNS	2	0	0	1530	LEONG, D	ALUMN	1	0	0	1970*
HILL, R	KNGHT	5	2	0	1697	LEONG, G	KEMPR	2	2	1	2083C
HILLIARD, J	CONBK	2	6	0	0000?	LEQUERE, F	KNGHT	0	0	0	1601

? - UNRATED

- 5 TO 9 RATED GAMES

* - 10 TO 24 RATED GAMES

C - CENTURY CLUB MEMBER

D - DOUBLE CENTURION

T - TRIPLE CENTURION

Q - QUAD CENTURION

NAME	TEAM	W	L	D	RATING	NAME	TEAM	W	L	D	RATING
LEVINE, D	KNIGHT	1	0	0	2381	OLSEN, A	KEMPR	1	4	1	1425*
LIKHTEREV, M	UOP	2	2	0	0000?	OLUND, P	MTRLA	0	2	0	1328*
LITVINAS, A	ALUMN	7	1	3	1717C	OSTERLUND, R	EXMPL	4	2	1	1945
LOMONT, C	SEARS	0	1	0	0000?	PAAUWE, N	AMOCO	2	2	1	1484
LORING, S	CONBK	0	0	0	2031	PALMER, S	COLUM	0	0	0	0000?
LOSKE, D	INDNS	0	0	0	0000?	PAPOUTSIS, G	UOP	0	0	0	0000?
LOSOFF, A	CRT	3	1	1	1959	PARA, A	FERMI	4	3	0	1613*
LUBERSHANE, S	MERC	1	3	0	0000?	PARAOAN, E	CONBK	4	3	1	1756
LUDWIG, T	DRGNS	2	2	1	2124	PATEL, R	CONBK	0	0	0	1426*
MANIA, B	HULL	1	1	0	0000?	PETERS, P	EXMPL	0	0	0	1079*
MANILLA, M	AMOCO	3	1	0	1260#	PETWAY, L	PSTOF	2	2	0	1453*
MARCOWKA, R	PSTOF	6	2	0	1994C	PIAO, T	DRGNS	8	0	0	1539*
MAREMA, D	PSTOF	3	1	0	1980	PIASZYNSKI, J	AMOCO	0	0	0	0000?
MARGULIS, A	HULL	4	4	0	0000?	PITTS, R	ROAD	1	4	0	0000?
MATHEWS, B	CRT	0	1	0	0000?	POMA, D	AMOCO	2	4	2	1210*
MATTHEWS, J	RAIL	4	5	0	1614	POMA, M	AMOCO	0	2	0	0000?
MCALISTER, K	COLUM	5	4	2	1900	PRATTS, M	COLUM	0	2	0	1628
MCCLOUD, E	DRGNS	2	2	0	1081#	PURDLE, D	FRANK	0	3	0	0000?
MCGRIFF, M	RADIO	1	2	0	1393	RACANELLI, F	UOP	1	0	0	0000?
MCINTOSH, S	CONBK	2	2	0	1170*	RADAVICIUS, E	CHRGR	4	4	0	1692C
MCNEASE, K	COLUM	0	0	0	0000?	RADKE, P	COLUM	0	0	0	0000?
MCPHAIL, C	TYROS	0	0	0	0000?	RADULSKI, B	TYROS	1	1	0	0000?
MCQUINN, J	ROCKW	3	4	0	1478	RAFACZ, T	ROCKW	4	4	0	1739
MCSMITH, B	COLUM	0	0	0	0000?	RAFACZ, W	ROCKW	3	2	3	1659
MEDINA, P	FERMI	0	1	0	0000?	RAFFERTY, M	HULL	0	2	0	0000?
MELNIKOV, I	MTRLA	5	1	1	2224	RANGEL, R	HULL	3	3	1	1740
MICKLICH, F	UOP	4	4	1	1739C	REHORST, R	FLPRO	0	0	0	0000?
MIKULECKY, B	RADIO	2	4	0	1303	REICHERT, P	NORTH	0	4	1	1645*
MILLER, TT	SEARS	3	3	3	1590*	REID, C	JCASE	2	3	1	1317
MIRANDA, V	FRANK	1	1	0	1462#	REVULURI, K	MTRLA	0	0	0	0000?
MITCHAM, L	ROCKW	0	1	0	1562*	REYES, R	SEARS	5	2	1	2313C
MOHANTY, K	KNIGHT	0	0	0	0000?	RIEDERER, D	CRT	0	0	0	1116#
MOKHTAR, M	INDNS	0	0	0	0000?	RINGENBERG, T	AMOCO	1	3	0	1409
MONZANI, A	FLPRO	0	0	0	1751	RO, D	CRT	0	0	0	1450*
MORRISON, J	KNIGHT	0	0	0	1728	ROJAS, R	RAIL	0	3	0	0000?
MORTON, B	SEARS	2	2	1	1566	ROQUE, P	COLUM	0	0	0	0000?
MOSES, J	PSTOF	0	0	0	0000?	ROSE, K	AMOCO	0	0	1	1980
MOTYCKA, R	JCASE	2	1	0	1189	ROSLEY, D	DRGNS	0	1	0	1793
MURPHY, B	FRANK	0	0	0	0000?	RUDDY, J	MERC	0	2	0	1232*
NAUGHTON, T	HULL	1	5	0	1305#	RZESZUTKO, R	ALUMN	2	0	0	1931
NELSON, H	CONBK	0	0	0	1960	SAHLI, E	UOP	1	2	2	1678*
NISHIMURA, K	FLPRO	1	4	0	1274#	SAJBEL, P	UOP	4	3	2	1749
NOWAK, W	RAIL	3	2	0	0000?	SAJKOWSKI, D	AMOCO	1	1	4	1956
NWABUDE, O	ROYLS	1	3	0	990#	SAMELSON, C	MTRLA	5	2	2	1997C
O'BRIEN, D	UOP	0	1	0	1401*	SANCHEZ, N	ROAD	2	0	0	0000?
O'DELL, DW	RADIO	2	5	0	1618	SANCHEZ, P	RAIL	0	1	0	0000?
OCKERS, S	KNIGHT	1	0	0	1568	SANCHEZ, R	FRANK	2	4	0	1429*
OELHAFEN, A	EXMPL	1	2	0	1278*	SANTOS, S	FRANK	0	0	0	0000?
OGASAWARA, L	ROYLS	4	1	2	1829	SATTERLEE, D	JCASE	1	8	0	1693C
OGASAWARA, R	MTRLA	0	0	1	1600D	SAUER, C	ROAD	0	1	0	0000?

? - UNRATED
- 5 TO 9 RATED GAMES
* - 10 TO 24 RATED GAMES

C - CENTURY CLUB MEMBER
D - DOUBLE CENTURION
T - TRIPLE CENTURION
Q - QUAD CENTURION

NAME	TEAM	W	L	D	RATING	NAME	TEAM	W	L	D	RATING
SCHATTKE, N	AMOCO	0	2	0	0000?	TOLPPI, J	WASTE	0	0	0	0000?
SCHWARTZ, M	TYROS	0	6	0	1053*	TRUSNICH, M	WASTE	0	0	0	0000?
SCHWARTZ, S	SEARS	0	1	0	1718C	TUKES, W	COLUM	0	0	0	0000?
SHAFF, R	TYROS	2	4	0	1563C	TURNER, K	PSTOF	0	0	0	1559
SHEU, G	ROYLS	0	1	1	1319*	TURNER, R	COLUM	3	4	0	1229*
SHIREY, S	KEMPR	0	0	0	0000?	TURPIN, S	INDNS	0	0	0	1196#
SIEGEL, R	CONBK	1	1	1	1480	TYREE, D	RADIO	1	6	0	1535#
SIMS, B	CRT	4	1	0	0000?	UNDERWOOD, W	EXMPL	6	1	0	1968C
SIMS, LL	KNGHT	0	0	0	0000?	VAN MEER, J	KEMPR	1	1	2	1983
SIWEK, M	KEMPR	4	0	3	2237	VAN OUIRIVE, R	RAIL	0	3	0	0000?
SLAUGHTER, S	ROAD	1	1	0	0000?	VAN ZILE, C	UOP	2	3	0	1396*
SLUSSER, C	CRT	0	0	0	0000?	VERGE, C	PSTOF	0	1	0	0000?
SMILEY, R	AMCRP	0	0	0	2024	VERIVE, J	AWEST	0	0	0	1603#
SMITH, BR	TYROS	0	5	1	1468	VIGANTS, A	NORTH	3	3	1	1621
SMITH, G	ROAD	4	4	0	1595#	WALKER, R	FERMI	0	1	0	1345C
SOLLANO, E	FRANK	4	0	3	1993	WALLACH, C	MTRLA	3	2	0	2062
SOMBONG, M	CONBK	1	0	0	1737	WALLIN, R	AWEST	0	0	0	1720*
SPANGLER, M	AMOCO	0	1	0	1371	WARD, C	DRGNS	1	5	0	1518D
SPECK, D	COLUM	4	2	0	1317	WARREN, J	CHRGR	3	1	3	2141T
SPIEGEL, L	FERMI	4	4	0	2036C	WATSON, W	COLUM	0	1	0	0000?
STAMM, V	CHRGR	1	2	0	1729D	WEAVER	FLPRO	0	0	0	0000?
STEIN, C	RAIL	0	1	0	0000?	WEBB, E	AMCRP	3	2	0	0000?
STEIN, P	AWEST	0	0	0	2236	WEBER, L	FRANK	2	2	2	2213
STEINER, D	HULL	0	0	0	0000?	WEISSKOPF, J	HULL	2	3	0	0000?
STELTON, N	AWEST	0	0	0	1373	WEITZ, R	FLPRO	0	6	1	1780C
STEVANOVIC, M	UOP	3	3	2	2252C	WELTER, P	SEARS	3	2	0	0000?
STEVENS, J	COLUM	0	2	0	0000?	WENTLING, C	AMCRP	3	3	3	1571
STINSON, M	ROYLS	0	0	0	2028	WEST, R	MTRLA	4	2	0	0000?
STOLTZ, B	TYROS	2	3	1	1984	WHITE, H	JCASE	2	5	1	1671
STUHLBARG, D	UOP	0	0	0	1527C	WHITTINGTON, D	HULL	0	0	0	0000?
SUERTH, F	EXMPL	4	1	3	1614C	WIECHERT, A	UOP	0	1	0	0000?
SUH, G	AMOCO	0	0	0	1462#	WILLIAMS, J	RAIL	2	3	0	0000?
SULLIVAN, C	MERC	1	8	0	1490*	WILLIAMSON, A	PSTOF	0	0	0	0000?
SULLIVAN, J	EXMPL	4	4	1	2004D	WILSON, A	ROAD	1	6	0	1560
SWIDERSKI, M	CHRGR	0	0	0	1345C	WILSON, M	SEARS	0	1	0	0000?
SZAUKELLIS, W	MTRLA	0	0	0	0000?	WINGFIELD, L	INDNS	0	0	0	0000?
TEGEL, F	DRGNS	6	0	2	2154D	WINSTON, H	ALUMN	0	0	0	1982
THOMAS, G	TYROS	2	3	0	1494	WITHERIDGE, T	WASTE	0	0	0	0000?
THOMAS, J	CHRGR	3	1	2	1534C	WONG, P	EXMPL	4	1	1	2212C
THOMPSON, J	RAIL	1	3	0	0000?	YOUNG, C	KNGHT	2	0	0	1968C
THOMPSON, R	FLPRO	1	2	0	1079	YOUNG, R	HULL	2	4	0	1397#
THOMPSON, T	ROAD	1	1	0	0000?	ZEIDEL, J	MERC	2	2	1	1951
TOGAMI, P	JCASE	0	0	0	1173*	ZOELLNER, J	CONBK	1	3	1	1236

? - UNRATED
- 5 TO 9 RATED GAMES
* - 10 TO 24 RATED GAMES

C - CENTURY CLUB MEMBER
D - DOUBLE CENTURION
T - TRIPLE CENTURION
Q - QUAD CENTURION