

Chicago Industrial Chess League

Bulletin 3, Volume 36

December, 1992

INSIDE THIS ISSUE:

More Annotated Games

Featured Articles -

- **2 Squares Column by Marv Cox**
- **Kumro's Korner**

A few words from the officers

CICL Ratings List

NEED INPUT! *To make the CICL bulletin even better, we are looking for anyone interested in submitting articles or games. If you are interested, call or write:*

Bulletin Editor - James Hodina

Home: 708/799-5571

Work: 312/856-2762

CICL OFFICERS
As of September 10, 1992

Addresses/Phones are listed in order of preference

PRESIDENT	Anthony Jasaitis P.O. Box 664 Bedford Park, IL 60499-0664	312-431-2966 (W)
	Chicago Research & Trading 33rd Floor 440 S. LaSalle Chicago, IL 60605	708-448-4967 (H)
SECRETARY	Leonard Spiegel MS 219 Fermilab Batavia, IL 60510	708-840-2809 (W) 708-377-2675 (H)
TREASURER	Wesley K. Underwood 207 S. Dorchester Ave. Wheaton, IL 60187	708-752-5127 (W) 708-462-0393 (H)
RATINGS CHAIRMAN	Charles Ward 615 S. Lincoln Hinsdale, IL 60521	708-325-3885 (H) 708-979-4599 (W) 708-979-8451 (FAX)
BULLETIN CHAIRMAN	James Hodina 718 Central Park Ave. Flossmoor, IL 60422	312-856-2762 (W) 708-799-5571 (H)
NORTH DIVISION	Leonard Augsburger 16 N. Fiore Vernon Hills, IL 60061	708-632-5102 (W) 708-816-1649 (H)
EAST DIVISION CHAIRMAN	William Cooper 7035 W. Imlay Chicago, IL 60631	312-765-3493 (W) 312-763-1567 (H)
NEAR WEST DIVISION CHAIRMAN	Dan Kumro 802 S. Elmhurst Ave. Mount Prospect, IL 60056	708-259-4981 (H)
FAR WEST DIVISION CHAIRMAN	Irwin Gaines Fermilab - m/s 127 P. O. Box 500 Batavia, IL 60510	708-840-4022 (W)

A WORD FROM THE EDITOR

This issue is loaded with material. Hopefully, you will find it enjoyable and as entertaining as always. First of all, I would like to put out another request to the division chairman to send me an update in the league. If you have any suggestions as to make this process easier, let me know. Thanks to Dan Kumro, who has been timely in his report once again. In absence of divisional reports, I encourage the reader to check out the Division Summary prefacing the ratings report.

Near West Division Report - Dan Kumro, Chairman

Leading the pack in the Near West are the Argonne Knights with a perfect score of 4 wins, 0 losses, and 0 draws; close on their heels are the Rockwell Challengers with 3 wins, 1 loss, and 0 draws. Last years 2nd place trophy winners were the AT&T Chargers who are off to a very poor start with 3 losses.

DUES ARE PAST DUE

Wes Underwood, CICL Treasurer, reports that the following teams did not get their team dues in before the November 30 deadline and now owe \$5.00 in addition to their regular dues.

UOP	CTA Road	CTA Rail	Rockwell Int'l
Fel-Pro	A&B Radio	Franklin-Watts	

If payment is not post marked by December 31, the penalty increases to \$10. A big thanks goes to the teams in the Far West Division, the only division to have no late dues payments!

RATINGS CHAIRMAN'S REPORT - Charlie Ward

NEXT FAX WINDOW - The next deadline for ratings submission is Saturday, Jan. 16. Team captians can make last minute submissions by fax during the week of January 10; prior to that the U.S. mail will be sufficient for submitting results.

USCF RATINGS WANTED!! - There have been a lot of players new to the CICL this year. Most of these players have been entered into the CICL rating system as unrated. However, anyone with a USCF rating can use that rating starting with their first game in the CICL. New players, please check the rating list. If you are listed as unrated but you have a current or past USCF rating, please notify me and let me know the rating. If you are not currently active in the USCF, let me know the approximate date that your rating was last active.

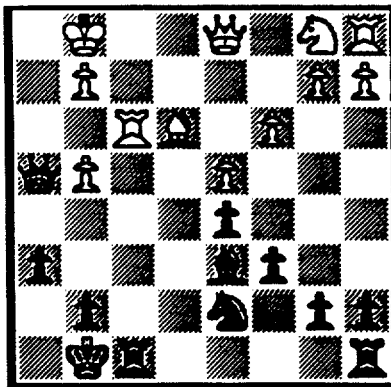
FRENCH DEFENSE

White: E Radavicious
Black: G. Berry

Argonne Knights vs AT&T Chargers
Annotations by Greg Berry

1.e4, e6 2.Bc4 d5 3.exd5, exd5
4.Bb3, Nf6 5.d4, c6 6.h3, Be6
7.Nf3, h6 8.c3, Bd6 9.O-O O-O 10.
Be3, Ne4 11.Bc2, f5 12.Bxe4, fxe4
13.Nh2, Qh4 14.Ng4. This could be
the losing move. White's knight
has no squares after Black's move,
except returning to h2.

14...., Nd7 15.f4 This causes
problems for White and losses at
least a pawn. 15...., exf4 e.p.
16.Rxf3, Bxg4 17. hxg4



After 17.hxg4

17.hxg4. If 17.Rf8+, Rxf8
18.Qxg4, Qe1++ or 18.hxg4,
Qh2++

17...., Qh2+. 18. f1, Qh1+
19.Bg1, Bh2 20.Kf2 Nf6.

My opponent grunted in
exasperation after the move.

21.Nd2, Nxc4+ 22.Ke2, Qxc2+
23.Kd3, Bxg1 24.Rxf8+, Rxf8
25.Qxg1, Qh3+ 26.Kc2, Nf2. This
is the best square for the Knight
and opens threats along the b1-h7
diagonal.

27.Qg6, Qf5+. With connected
passed pawns, it is time for the
endgame.

28.Qxf5, Rxf5, 29.Re1, h5
30.Re8+, Rf8 31.Re5, g6 32.Re3,
h4 33.Nf3, h3 34.Nh2, Kg7
35.Rg3, Rf5 36.Kb3. 36.Kd2
allows Ne4+.

36...., g5 37.a3, Kg6 38.Rg1,
Rf4 39.a4, g4 40.Nf1, Ne4. Black
threatens Rc1 and g3 if 41.Nh2.
Whites see the threat and resigns.

CENTER COUNTER DEFENSE

White: J. Deng (1645)
Black: K. Kosticka (1555)

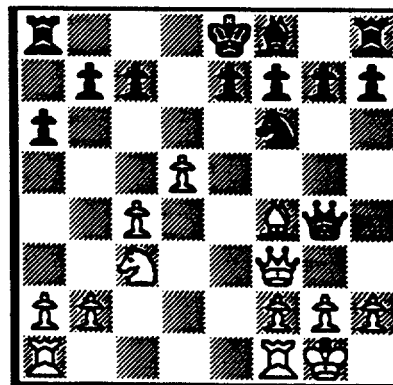
CICL 1992 Round 3 Board 3
Chicago Research & Trading vs
Columbia College 10/28/92

Notes by J. Deng

Without knowing the opening,
White follows the principle of
efficient development. Black
misjudges White's attacking
prospects. White opens up Black's
King's position by offering a Bishop
and by keeping the King in a mating
pocket.

1.e4 d5 2.exd5 Nf6 3.Nf3 Nxd5
4.d4 Bg4 5.Be2 Nc6? Black allows
White to gain too much space by
attacking the exposed N's.

6.c4 Nf6 7.d5 Bxf3 8.Bxf3 Ne5
9.O-O Nxf3+ 10.Qxf3 Qd7 11.Nc3
a6 12.Bf4 Qg4.



After 12.Bf4, Qg4

The only hope: try to reduce the
attacking force. Black's position is
already very difficult, as he has
problems castling on either side of
the board. If he castles Q-side,
White has excellent mobility for the
attack, and Black has no pieces for
defense. The alternatives: g6/Bg7
leave the e-pawn very weak; e6
walks into strong central pressure.

13.Qe3! O-O-O 14.Rac1
14...Qd7?? 15.Qa7! Qf5 16.Qa8+
Kd7 17.Qxb7. Seeing that I had at
least a perpetual check, I did not
worry too much about the
correctness of the sac, as it keeps
Black's Q out of the action.

17... Qxf4 18.Qc6+!. Keeping
the K in a pocket, and gaining
tempo to improve the position.

18...Kc8 19.Qxa6+ Kd7
20.Qc6+ Kc8 21.Nb5. Threatens
to win at least the Q with 22.d6!

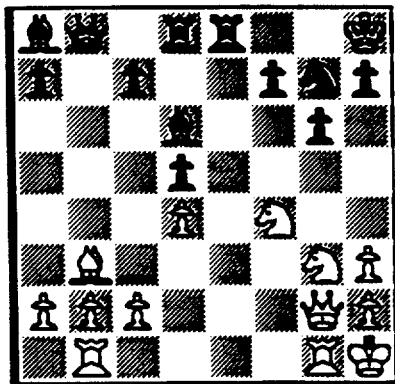
21....Nd7. Now all White has to
do is get rid of the only piece
stopping mate, but Ne8 is no
better: 22.Na7+ Kb8 23.Qa6 Rd6
24.Nc6+ Rxc6 25.dxc6.

22.g3! Qe5 23.Rfe1 Black resigns

2
SQUARES
COLUMN

by Marv Cox

"If two (or more) squares are attacked more times than they are defended they may fall."

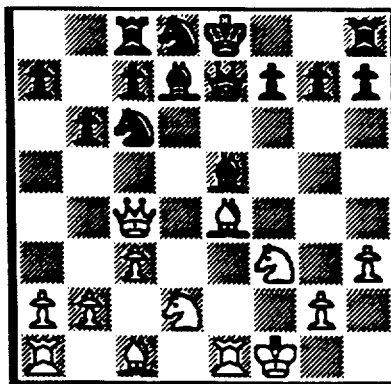


I had white and figured I could win the d5 pawn from my uncle who had black. Obviously, I could not take the pawn with my bishop because my knight was hanging.

1.Nxd5, Bdxg3 2.hxg3, Qxb3 (What's he doing?) 3.axb3, Bxd5. My uncle has won a piece for the pawn. He did it to me again!!

Examine squares b3 and d5. White attacks (or guards) with his queen, knight, and a pawn. (2 pawn guards for b3 are no better than one pawn.) Black attacks (or guards) with queen, bishop on a8, and masked rook on d8. Three white and three black. Since White takes first, Black will take last and so White's initial capture must be unsound. Black's capture on g3 was merely a clearance move and it befuddled me. Note it is not necessary for the pieces on b3 and d5 to be of the same army. This is generally true for 2-square, 3-square, or more complex positions.

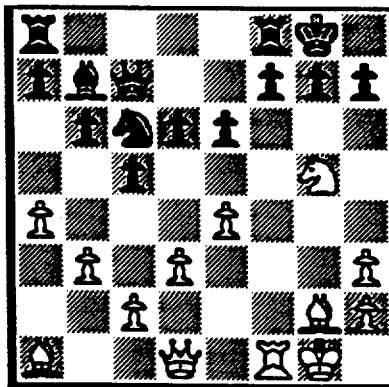
"If two (or more) squares are attacked more times than they are defended they may fall."



Let's look at squares e5 and c6. White attacks them with knight, a mask rook, a bishop and a queen. Total 4 attacking pieces. Black guards with his queen, bishop, and his second knight. Total - 3 guards. Four attacks, three guards --- the squares may fall.

1.Bxc6, Nxb6 2.Qxc6, Bxc6 3.Rxe5. White has won 2 minor pieces for a rook.

"If two (or more) squares are attacked more times than they are defended they may fall."



One of the most colorful mates is for White to sacrifice two pieces to remove the g7 and h7 pawns to lay bare an insufficiently defended black king per diagram 53 above. However, a particular position may not warrant the attack. Below is a

main line resulting in a quick mate, also some variations Black can follow to advantage.

1.Nxh7, Kxh7(a) 2.Qh5, Kg8 3.Bxg7, Kxg7(b),(c) 4.Qg5, Kh8 5.Rf6 and mates next move.

(a) 1...., Rfc8!! 2.Nf6, PxN !!(e) 3.Qg4, Kf8 4.Bxf6, Ne3 5.Qg7, Ke8 6.Bg5, Ng6 7.Qg8, Nf8 8.Bh3, f5 9.Bh6, Qf7 10.QxQ, KxQ 11.PxP, e5 and Black wins.

(b) 3...., f6 4.Qh8, Kf7 5.Rxf6, Ke7 6.BxR, RxR 7.QxR, Kd7 8.Rf7, Ne7 9.QxN and White wins.

(c) 3...., f5 4.Qh8, Kf7 5.BxR, Ne7 6.PxP, BxB 7.PxP, KxP 8.Qf6 Kd5 9.KxB, RxR 10.QxR advantage White.

(d) 2.Bxg7, KxB (f) 3.Rf6, KxN 4.Qg4, Ne5 5.h5, Rg8 6.PxN RxP and Black will win.

(e) 2...., Kf8?, 3.Qh5, Ke7? 4.Nd5, PxN 5.Qxf7, Kd8 6.Qf8, Kd7 and White will mate.

(f) 2...., KxN? 3.Bf6, Kg8 4.Qh5, Kf8 and White will mate.

Kumro's Komer

by Dan Kumro, League Historian

Here is a historic matchup from April 1978.

RUY LOPEZ

White: L. Muir, Amoco

Black: D. Kumro, WE Chargers

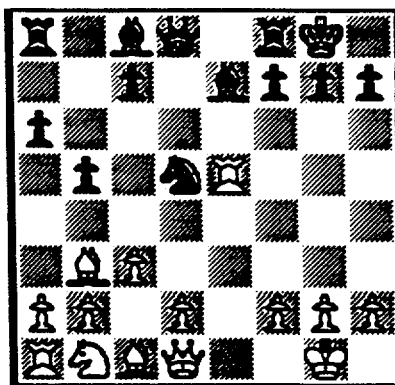
In CICL Bulletin, Vol 21, No. 2, the famous game appeared in which U.S. Champion Frank Marshall unveiled his attack against the Ruy Lopez. It has often been said that chess develops patience, but Marshall discovered his sacrificial attack and then waited eight years just to unveil it against Jose Raoul Capablanca -- this has to be the ultimate in patience. I have long been a fan of the Marshall Attack and fortunately get to play it more often than once in eight years.

Sometimes a game of chess moves along at a quick pace, and when the battle is over only an hour or so has slipped by. There can be several reasons for this -- a favorite television show later in the evening, a winter storm brewing or perhaps both players are just in a hurry to get the games over, win or lose. Sometimes, however, the reason is that each player moves quickly and confidently because he believes his is winning. This is apparently what happened in the following game: I used 16 minutes, while my opponent consumed only 13. Fortunately, I was right this time, and my opponent was wrong.

1.P-K4, P-K4 2.N-KB3, N-QB3 3.B-N5, 4.B-R4, N-B3 5.O-O, B-K2 6.R-K1, P-QN4 7.B-N3, O-O 8.P-B3, P-Q4! The Marshall Attack. Black sacs a pawn for a strong K-side attack.

9.PxP. An interesting alternative is 9.P-Q4.

9..... NxP 10.NxP, NxN 11.RxN.



After 11. RxN

Some players unfamiliar in the Ruy Lopez, believe they have won a pawn at this point; they fail to see the violent attack that follows. The attack can be survived with precise play, but White usually must give back the pawn to do so.

11..... N-B3. In this game, I chose to play the old traditional line (The modern 11....., P-B3! is stronger. Play might continue 12.P-Q4, B-Q3 13.R-K1, Q-R5 14.P-KN3, Q-R6 15.B-K3, B-KN5 16.Q-Q3, QR-K1. All of White's moves are virtually forced. Black has completed his development and his pices are all well placed, ready to spring at White's K-side. White, on the other hand, is still trying to get his pieces out.)

12.P-Q4, B-Q3 13.R-K1, N-N5 14.P-KR3, Q-R5 15.Q-B3, NxP 16.QxR? Maybe this is where my opponent thought he was winning and the plump rook was too great a temptation. Its capture, however, is disastrous; B-Q2 or 16.R-K2 is necessary.

16..... NxPch 17.PxN, QxRch 18.K-N2, Q-N6ch 19.K-B1 BxPch! 20.Resigns. The White Q must fall. Up to this point, my opponent had played twice as fast as I had, consuming only eight minutes against my 16. After my 19th move, he thought for about five minutes, the resigned, The Marshall Gambit strikes again.

Grandmaster Classics

Capablanca-Marshall, New York 1918

Before Bobby Fischer, the name of no chess master was better known to the non-chess-playing public than that of Jose Raoul Capablanca (1888-1942). Capablanca learned the moves at the age of four in his native Havana. During the second half of the 19th century, the city was a hotbed of chess activity. Growing up in such an atmosphere, the child Capablanca learned to play chess the way other children learn to speak. He was world champion from 1921 to 1927 and is generally considered the greatest natural player in chess history.

Capablanca could penetrate the most complex positions intuitively and reduce a position to its bare essentials by quickly swapping off all superficial material. Because of this, he acquired such a reputation as a positional master that his great tactical ability often went unappreciated. His tactical mastery is best revealed in his games against the great attacking players of his time. In the game that follows -- probably the best known of his career -- Capablanca faced America's greatest player of the first three decades of the 20th century.

RUY LOPEZ

Capablanca - Marshall
New York 1918

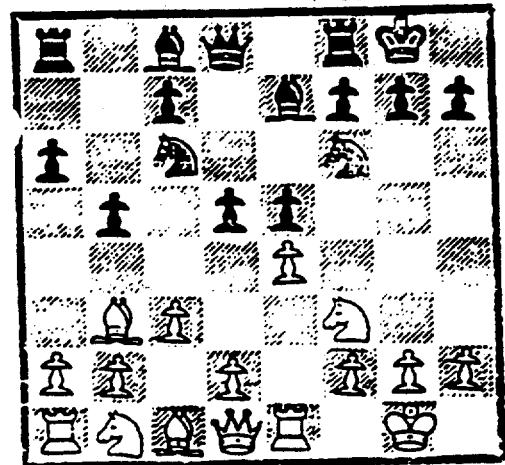
- | | |
|----------|-------|
| 1. P-K4 | P-K4 |
| 2. N-KB3 | N-QB3 |

- | | |
|---------|--------|
| 8. P-B3 | P-Q4!? |
|---------|--------|

This was the first of three surprises Marshall had for Capablanca within the first eight moves. In 1909 Marshall had lost a match with the 21-year-old Capablanca by the score of 8 to 1 with 15 draws. Soon after the match, Marshall discovered the innovation he would unveil in this game. For eight years, he played the Petroff Defense (2. ... N-KB3) while secretly studying his discovery and awaiting another meeting with Capablanca.

- | | |
|---------|-------|
| 3. B-N5 | P-QR3 |
| 4. B-R4 | N-B3 |
| 5. O-O | B-K2 |
| 6. R-K1 | P-QN4 |
| 7. B-N3 | O-O |

The second surprise. The usual move was and is 7. ... P-Q3. Not sure what to expect next, Capablanca continued in customary fashion to prepare P-Q4.



Position after 8. ... P-Q4!?

The third surprise. This move introduces the Marshall Attack. In a move considered sound by present theory, Black offers White a pawn in re-

turn for a dangerous K-side attack. In the late 1960s, grandmasters Geller, Spassky and Tal all played the Marshall Attack with the black pieces. Capablanca saw that capturing the pawn would open him to a violent onslaught, but felt that under the circumstances to decline would be unworthy.

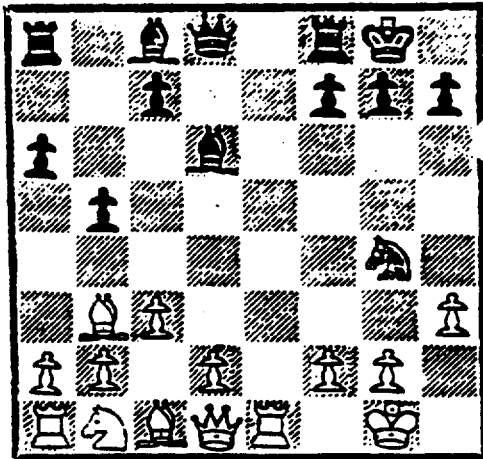
- | | |
|---------|------|
| 9. PxP | NxP |
| 10. NxP | NxN |
| 11. RxN | N-B3 |

Today, 11. ... P-B3! is considered best. The main line runs 12. P-Q4, B-Q3; 13. R-K1, Q-R5; 14. P-N3, Q-R6; 15. B-K3, B-KN5; 16. Q-Q3, QR-K1; 17. N-Q2, and now Black can chose between 17. ... R-K3 and 17. ... P-KB4.

- | | |
|----------|------|
| 12. R-K1 | B-Q3 |
|----------|------|

Black's bishops, knight and queen stand ready to attack the white king, while White's Q-side is entirely undeveloped and cannot join in the defense for some time.

- | | |
|-----------|-------|
| 13. P-KR3 | N-N5! |
|-----------|-------|



Position after 13. ... N-N5!

White cannot take the knight. If 14. PxN, Q-R5; 15. Q-B3, B-R7ch! (In a rare tactical oversight, Capablanca incorrectly recommended 15. ... Q-R7ch: 16. K-B1, BxP; 17. QxB, Q-R8ch; 18. K-K2, QR-K1ch "and wins." But victory belongs to White after 19. B-K6!!, RxB; 20. QxR.); 16. K-B1, BxP with a strong attack. 17. R-K4 fails against 17. ... B-B5! If 17. Q-K4!, B-B5!; 18. P-N3, Q-R7!; 19. R-K3,

QR-K1; 20. Q-Q5, BxP!; 21. RxB, B-K7ch and Black should mate after 22. K-K1, B-B6ch.

- | | |
|-----------|-------|
| 14. Q-B3 | Q-R5 |
| 15. P-Q4! | NxP!? |
| 16. R-K2 | |

Not 15. QxN, because of 16. ... B-R7ch!; 17. K-B1, B-N6; 18. Q-K2, BxP!; 19. PxB, QR-K1; 20. B-K3 (If 20. QxR, QxPch, and mate follows.), BxR; 21. QxB, QxPch; 22. K-B2, Q-R5ch; 23. K-B1, QxQch; 24. KxQ, RxBch; 25. K-B2, KR-K1

Wade and Hartman favor 16. B-Q2!, followed by 16. ... B-N2!; 17. QxB, N-Q6; 18. R-K2, Q-N6; 19. K-B1, Q-R7; 20. P-N4!, QxPch.

- | | |
|---------|-------|
| 16. ... | B-KN5 |
|---------|-------|

Tartakover recommended 16. ... N-N5. He considered White's best reply to be 17. R-K8, N-B3; 18. RxRch, KxR; 19. N-Q2 (Not 19. QxR??, Q-K8 mate.), R-N1; 20. N-B1 with approximate equality.

Wade and Harding suggest "the interesting and complicated" 17. QxR!?, Q-N6; 18. PxN, Q-R7ch; 19. K-B2!, Q-R5ch!; 20. K-K3, B-B5ch; 21. K-Q3, B-B4ch; 22. PxB, RxQ; 23. B-Q5 with a small advantage for White.

- | | |
|---------|--|
| 17. PxB | |
|---------|--|

If 17. QxN, B-N6; 18. Q-B1, BxR;

19. QxB, QR-K1 wins.

- | | |
|---------|--------|
| 17. ... | B-R7ch |
|---------|--------|

If 17. ... NxP?; 18. B-KB4.

- | | |
|----------|------|
| 18. K-B1 | B-N6 |
|----------|------|

- | | |
|---------|--------|
| 19. RxN | Q-R8ch |
|---------|--------|

- | | |
|----------|-----|
| 20. K-K2 | BxR |
|----------|-----|

On 20. ... QxB, Tartakover recommends 21. QxB, QxPch; 22. K-Q3, QxR; 23. K-B2, P-N5; 24. P-N5!, PxP; 25. QxP(B3), QxQch; 26. NxQ with a won ending for White.

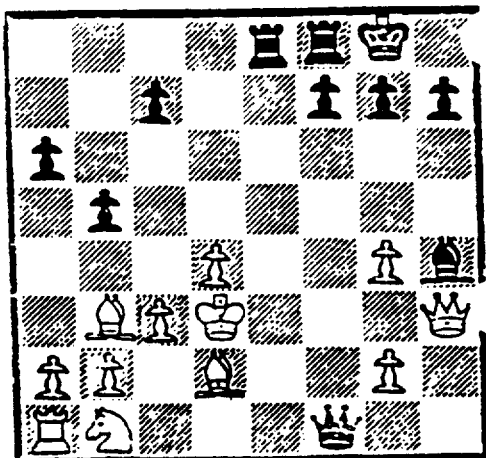
Euwe, however, recommends a different reply to 20. ... QxB: 21. R-B1!, QxPch; 22. N-Q2, and White can meet 22. ... QR-K1ch with 23. K-Q3 and win with his material advantage.

- | | |
|----------|------|
| 21. B-Q2 | B-R5 |
|----------|------|

- | | |
|----------|---------|
| 22. Q-R3 | QR-K1ch |
|----------|---------|

- | | |
|----------|--------|
| 23. K-Q3 | Q-B8ch |
|----------|--------|

JOIN USCF



Position after 23. ... Q-B8ch.

White has now survived the worst of the attack.

24. K-B2 B-B7

"Black seeks in vain to find fresh points of contact for his attack." -- Euwe.

25. Q-B3 Q-N8

Capablanca said Black's best chance was 25. ... R-K7; 26. N-R3!, RxBch; 27. KxR, QxR; 28. QxB, QxPch; 29. N-B2, P-B4; 30. B-Q5 with a difficult win for White.

JOIN USCF

26. B-Q5 P-B4

27. PxP BxP

28. P-N4

Preparing the liberating 29th move.

28. ... B-Q3

29. P-R4

Bringing his rook into the game.

29. ... P-QR4

This gives White a strong passed pawn, but other moves give him the QR file.

30. RPxP PxP

Black is still trying to open lines to the enemy king.

31. R-R6 PxP

32. NxP B-N5

33. P-N6

White takes the initiative and Black's game quickly collapses.

33. ... BxN

34. BxB P-R3

If 34. ... R-K6; 35. QxPch!

35. P-N7 R-K6

At this point Capablanca announced mate in five: 36. BxPch, RxB; 37. P-N8(Q)ch, K-R2; 38. RxBch, KxR; 39. Q-R8ch, K moves: 40. Q(8)-R5 mate.

Notes to this game were compiled from Max Euwe's The Development of Chess Style, Fred Reinfeld's The Immortal Games of Capablanca and R.G. Wade and T.D. Harding's The Marshall Attack.

JOIN THE U.S. CHESS FEDERATION !!

Because the CICL is a USCF affiliate, our members can join the USCF or renew membership at a discount.

WHY JOIN?

Membership in the USCF includes a subscription to Chess Life, one of the world's best chess magazines. It also allows members to play in USCF-rated tournaments and to earn a nationally recognized rating. There is a USCF-rated tournament scheduled almost every week somewhere in the Chicago area, ranging from the Illinois championship down to small local tournaments. USCF members can also purchase books and equipment at discount prices.

WHAT IS THE COST?

One year's USCF membership is \$26.00 (this includes the \$4.00 affiliate discount). To join, send a check made out to the U.S. Chess Federation to:

Charlie Ward
615 S. Lincoln St.
Hinsdale, IL 60521

Be sure to include your full mailing address, including ZIP code. If you are already a member and would like to renew your membership, please also include your membership number and expiration date (printed on the Chess Life mailing label). If you were previously a member but let your membership expire, please provide the approximate expiration date of the earlier membership.

WHAT HAPPENS NEXT?

I will forward your check to the USCF along with a letter certifying that you qualify for the discount. I will also send you a receipt that will serve as a temporary membership card until your permanent card arrives from the USCF.

NORTH DIVISION 12-05-1992

TEAM NAME	W	L	D	GAME MATCH		PCT
				POINTS	POINTS	
UOP PROCESS DIV.		0	1	16.5	2.5	0.875
MOTOROLA	3	0	0	14.0	4.0	1.000
KEMPER INSURANCE	1	1	2	12.5	2.0	0.500
SEARS	1	0	2	10.0	2.0	0.667
FRANKLIN-WATTS	1	1	1	9.0	1.5	0.500
EXEMPLARS	1	1	0	7.5	1.0	0.500
NORTHROP CORP.	0	3	0	5.5	0.0	0.000
FEL-PRO	0	4	0	3.0	0.0	0.000

EAST DIVISION 12-05-1992

TEAM NAME	W	L	D	GAME MATCH		PCT
				POINTS	POINTS	
CHICAGO RES. & TRDG.	6	0	0	32.5	6.0	1.000
CHICAGO POST OFFICE	4	0	0	19.5	4.0	1.000
COLUMBIA COLLEGE	2	3	0	13.5	2.0	0.400
ALUMNI CENTRAL	2	1	0	10.5	2.0	0.667
AMOCO CORP.	2	1	0	8.0	2.0	0.667
HULL TRADING CO.	1	1	1	9.0	1.5	0.500
CONTINENTAL BANK	1	3	0	7.5	1.0	0.250
CTA RAIL	0	2	1	5.0	0.5	0.167
CTA ROAD	0	4	0	4.5	0.0	0.000
CHICAGO MERC. EXCH.	0	3	0	4.0	0.0	0.000

NEAR WEST DIVISION 12-05-1992

TEAM NAME	W	L	D	GAME MATCH		PCT
				POINTS	POINTS	
ARGONNE KNIGHTS	3	0	0	15.0	3.0	1.000
ROCKWELL INT'L	3	1	0	14.5	3.0	0.750
J. I. CASE	2	1	0	10.5	2.0	0.667
A & B RADIO	1	3	0	7.5	1.0	0.250
AT&T CHARGERS	0	3	0	5.0	0.0	0.000

FAR WEST DIVISION 12-05-1992

TEAM NAME	W	L	D	GAME MATCH		PCT
				POINTS	POINTS	
BELL LABS DRAGONS	4	0	0	17.5	4.0	1.000
FERMILAB	2	1	0	11.5	2.0	0.667
BELL LABS ROYALS	2	1	0	11.0	2.0	0.667
AT&T TYROS	0	4	0	5.0	0.0	0.000
AMOCO RESEARCH LABS	0	3	0	4.5	0.0	0.000

13-OCT-92 J. I. CASE
ROUND 2

ROCKWELL INT'L

5

BD	RATINGS	SCORE	RATINGS	SCORE
1 SATTERLEE, D	1715 -4	0	JONES, B	2117 4 1
2 WHITE, H	1705-22	0	RAFACZ, T	1718 22 1
3 KALE, S	1553-18	0	RAFACZ, W	1620 18 1
4 KLINEFELTER, H	1517-20	0	EFRON, D	1555 20 1
5 CARTER, D	1078 -4	0	MCQUINN, J	1494 4 1
6 GASTON, K	1327 12	1	DEZONNO, T	1153-12 0
7 MOTYCKA, R	1178 0	1	GREENE, D	0 0 0
8 REID, C	1302 35	1	DOBR, K	1524-23 0 (CHRGR)

21-OCT-92 A & B RADIO
ROUND 3

1.5 J. I. CASE

4.5

BD	RATINGS	SCORE	RATINGS	SCORE
1 TYREE, D	0 0	0	GASTON, K	1339 0 1
2 O'DELL, DW	1611-16	0	SATTERLEE, D	1711 16 1
3 LASKY, J	1422 5	.5	KLINEFELTER, H	1497 -5 .5
4 BOOKER, G	1386-13	0	KALE, S	1535 13 1
5 LASKY, N	1458-33	0	KANAS, W	1285 33 1
6 MIKULECKY, B	1320 24	1	REID, C	1337-24 0

04-NOV-92 ROCKWELL INT'L
ROUND 3

4 AT&T CHARGERS

2

BD	RATINGS	SCORE	RATINGS	SCORE
1 JONES, B	2121 25	1	WARREN, J	2153-11 0
2 RAFACZ, T	1740 23	1	STAMM, V	1748-15 0
3 RAFACZ, W	1638-21	0	RADAVICIUS, E	1656 14 1
4 MITCHAM, L	1590-28	0	DOBR, K	1501 19 1
5 MCQUINN, J	1498 30	1	KUMRO, D	1610-20 0
6 DEWITT, G	1356 32	1	THOMAS, J	1510-21 0
7 DEZONNO, T	1141 33	1	BRADY, R	1315-33 0

05-NOV-92 ARGONNE KNIGHTS
ROUND 3

5 AT&T TYROS

1

BD	RATINGS	SCORE	RATINGS	SCORE
1 LEVINE, D	2377 4	1	BHOJWANI, C	1976 -4 0
2 BENEDEK, R	2219 7	1	STOLTZ, B	2014-11 0
3 BERRY, G	2079 7	1	BLAZIE, J	1878-11 0
4 GREEN, D	1859 10	1	BROZOVICH, J	1748-10 0
5 DECMAN, S	1729 7	1	SMITH, BR	1522-10 0
6 HILL, R	1741-38	0	THOMAS, G	1448 38 1

18-NOV-92 ROCKWELL INT'L
ROUND 4

4.5 A & B RADIO

1.5

BD	RATINGS	SCORE	RATINGS	SCORE
1 JONES, B	2146 2	1	O'DELL, DW	1595 -2 0
2 RAFACZ, T	1763 0	1	TYREE, D	0 0 0
3 RAFACZ, W	1617-12	.5	LASKY, J	1427 12 .5
4 DEWITT, G	1388 25	1	LASKY, N	1425-25 0
5 DEZONNO, T	1174-12	0	MIKULECKY, B	1344 12 1
6 CAPAGATTI, A	0 0	1F	JENKINS, M	0 0 OF

11-NOV-92 BELL LABS DRAGONS	1.5	BELL LABS ROYALS	1.5
ROUND 3			
BD	RATINGS	SCORE	RATINGS SCORE
1 LUDWIG,T	2129 26	1	GUIO,J 2189-26 0
2 TEGEL,F	2124 -8	.5	DOBROVOLNY,C 1908 13 .5
3 JACOBS,N	1962 -7	.5	BLACKMON,E 1776 12 .5
4 DURKEE,D	1766 3	.5	OGASAWARA,L 1826 -1 .5
5 HICKS,C	1501 29	1	HAHNE,D 1603-29 0
6 EUSTACE,D	1455 15	1	SHEU,G 1334-15 0
7 PIAO,T	0 0	1	ANDERSON,CJ 1297 0 0

11-NOV-92 FERMILAB	5.5	AMOCO RESEARCH LABS	.5
ROUND 3			
BD	RATINGS	SCORE	RATINGS SCORE
1 DORIGO,T	2089-10	.5	SAJKOWSKI,D 1941 10 .5
2 SPIEGEL,L	2042 1	1	PAAUWE,N 1442 -1 0
3 GAINES,I	1767 3	1	RINGENBERG,T 1385 -4 0
4 CISKO,G	1570 4	1	POMA,D 1182 -4 0
5 PARA,A	1612 0	1	GABRIELLO,A 0 0 0
6 HARRIS,R	1550 0	1	SCHATTKEN,N 0 0 0

02-DEC-92 BELL LABS DRAGONS	6	AT&T TYROS	0
ROUND 4			
BD	RATINGS	SCORE	RATINGS SCORE
1 TEGEL,F	2116 9	1	BHOJWANI,C 1972-14 0
2 JACOBS,N	1955 11	1	BLAZIE,J 1867-17 0
3 DURKEE,D	1769 7	1	SHAFF,R 1560 -7 0
4 WARD,C	1560 0	1	KARPIERZ,J 0 0 0
5 EUSTACE,D	1470 24	1	THOMAS,G 1486-24 0
6 PIAO,T	1465 5	1	SCHWARTZ,M 1084 -5 0

21-OCT-92 EXEMPLARS	6	FEL-PRO	0
ROUND 1			
BD	RATINGS	SCORE	RATINGS SCORE
1 WONG,P	2178 3	1	WEITZ,R 1796 -3 0
2 BLOOM,B	2061 2	1	HESS,B 1504 -2 0
3 CREWSE,L	2038 1	1	FELDMAN,A 1403 -1 0
4 SULLIVAN,J	2034 0	1	NISHIMURA,K 0 0 0
5 SUERTH,F	1618 0	1	DEARDORFF,M 0 0 0
6 OELHAFEN,A	1279 10	1	BAKER,B 1067-10 0

22-OCT-92 NORTHROP CORP.	1.5	MOTOROLA	4.5
ROUND 2			
BD	RATINGS	SCORE	RATINGS SCORE
1 GOLUMBOVSKI,P	2114 4	.5	HASAN,Y 2168 -4 .5
2 DIAZ,P	2030-12	0	MELNIKOV,I 2215 12 1
3 BURIAN,D	1668 -5	0	SAMELSON,C 2020 3 1
4 REICHERT,P	1682-13	0	AUGSBURGER,L 1834 13 1
5 VIGANTS,A	1628 31	1	FAHRENHOLTZ,S 1758-31 0
6	0 0	0F	CIESLEK,D 2060 0 1F

03-NOV-92 FEL-PRO .5 COP PROCESS DIV. 5.5
 ROUND 3

BD	RATINGS	SCORE	RATINGS	SCORE
1 WEITZ, R	1793 -2	0	STEVANOVIC, M	2251 2 1
2 FELDMAN, A	1102 -1	0	BOLDINGH, E	2172 1 1
3 HESS, B	1502 -2	0	BUERGER, E	2048 1 1
4 NISHIMURA, K	0 0	0	MICKLICH, F	1765 0 1
5 BAKER, B	1057 -1	0	SAJBEL, P	1732 1 1
6 DEARDORFF, M	0 0	.5	SAHLI, E	1727 0 .5

11-NOV-92 FRANKLIN-WATTS 4 NORTHROP CORP. 2
 ROUND 3

BD	RATINGS	SCORE	RATINGS	SCORE
1 WEBER, L	2267 -7	.5	JAKSTAS, K	2164 4 .5
2 BENESA, A	2165 19	1	GOLUMBOVSKI, P	2118-19 0
3 GAZMEN, E	2178-10	.5	DIAZ, P	2018 10 .5
4 SOLLANO, E	1987 6	1	BURIAN, D	1663 -6 0
5 SANCHEZ, R	1426 -9	0	VIGANTS, A	1659 9 1
6 PURDLE, D	0 0	1F		0 0 0F

12-NOV-92 MOTOROLA 4.5 EXEMPLARS 1.5
 ROUND 3

BD	RATINGS	SCORE	RATINGS	SCORE
1 HASAN, Y	2164 14	1	SULLIVAN, J	2034-10 0
2 SAMELSON, C	2023-13	0	BLOOM, B	2063 20 1
3 MELNIKOV, I	2227-22	.5	SUERTH, F	1618 22 .5
4 HUNG, N	0 0	1	OELHAFEN, A	1289 0 0
5 WALLACH, C	2062 0	1F	PETERS, P	1079 0 0F
6 CIESLEK, D	2060 0	1F		0 0 0F

12-NOV-92 KEMPER INSURANCE 3 SEARS 3
 ROUND 3

BD	RATINGS	SCORE	RATINGS	SCORE
1 SIWEK, M	2195 30	1	REYES, R	2314-20 0
2 VAN MEER, J	2004-14	.5	BROCKETT, M	1772 14 .5
3 HUGHES, N	1825 7	1	MILLER, TT	1526 -7 0
4 OLSEN, A	1483-20	0	MORTON, B	1529 20 1
5 CUMMUTA, P	1372 0	0	WELTER, P	0 0 1
6 GUILLEN, B	1366 3	.5	CIBA, F	1406 -3 .5
7 KAUFMAN, M	0 0	0	BALASE, E	1364 0 1
8 LAMBIRIS, J	0 0	1	DEO, D	0 0 0 (KEMPR)

16-NOV-92 FEL-PRO 2 SEARS 4
 ROUND 2

BD	RATINGS	SCORE	RATINGS	SCORE
1 WEITZ, R	1791-15	0	BROCKETT, M	1786 23 1
2 HESS, B	1500 2	.5	MILLER, TT	1519 -2 .5
3 FELDMAN, A	1401 0	0	WELTER, P	0 0 1
4 NISHIMURA, K	0 0	0	CUMBERLAND, M	0 0 1
5 THOMPSON, R	1079 0	1	WILSON, M	0 0 0
6 BAKER, B	1056 18	.5	CIBA, F	1403-18 .5

19-NOV-92 UOP PROCESS DIV. 1 FRANKLIN-WATTS 2
 ROUND 4

BD		RATINGS	SCORE		RATINGS	SCORE
1	STEVANOVIC, M	2253	15	1	WEBER, L	2260-23 0
2	BOLDINGH, E	2173	23	1	BENESA, A	2184-23 0
3	BUERGER, E	2049	-10	0	GAZMEN, E	2168 15 1
4	MICKLICH, F	1765	-6	0	SOLLANO, E	1993 10 1
5	SAJBEL, P	1733	6	1	SANCHEZ, R	1417 -6 0
6	BRIONES, M	1694	0	1	PURDLE, D	0 0 0

30-NOV-92 KEMPER INSURANCE 5.5 FEL-PRO .5
 ROUND 4

BD		RATINGS	SCORE		RATINGS	SCORE
1	SIWEK, M	2225	3	1	WEITZ, R	1776 -2 0
2	HUGHES, N	1832	6	1	HESS, B	1502 -6 0
3	OLSEN, A	1463	0	1	DEARDORFF, M	0 0 0
4	BLOEDOW, P	1472	-3	.5	FELDMAN, A	1401 5 .5
5	LAMBIRIS, J	0	0	1	THOMPSON, R	1079 0 0
6	DEO, D	0	0	1	BAKER, B	1074 0 0
7	KAUFMAN, M	0	0	1	KEEFE, E	0 0 0

07-OCT-92 CONTINENTAL BANK 1 CHICAGO POST OFFICE 5
 ROUND 3

BD		RATINGS	SCORE		RATINGS	SCORE
1	FRAATS, D	1869	-6	0	INUMERABLE, F	2187 6 1
2	PAROAN, E	1777	36	1	MARCOWKA, R	2012-24 0
3	DYCKZOWSKI, R	1655	-6	0	MAREMA, D	1979 6 1
4	HAMMOND, M	1354	-7	0	COOPER, W	1663 7 1
5	MCINTOSH, S	1159	-10	0	GRIESMEYER, W	1384 10 1
6	HILLIARD, J	0	0	0	HOWARD, W	1332 0 1

08-OCT-92 CHICAGO MERC. EXCH. 2.5 AMOCO CORP. 3.5
 ROUND 1

BD		RATINGS	SCORE		RATINGS	SCORE
1	ZEIDEL, J	1956	-16	0	HODINA, J	2060 16 1
2	FRANK, M	1701	29	1	ATKINSON, J	1810-29 0
3	SULLIVAN, C	1554	-21	0	WENTLING, C	1570 21 1
4	COTE, J	1316	6	.5	HAMILTON, L	1407 -6 .5
5	GAVIN, L	1216	0	0	HAMPER, P	0 0 1
6	LUBERSHANE, S	0	0	1	BAER, M	0 0 0

21-OCT-92 CONTINENTAL BANK 4 HULL TRADING CO. 2
 ROUND 1

BD		RATINGS	SCORE		RATINGS	SCORE
1	PAROAN, E	1813	-32	0	RANGEL, R	1659 32 1
2	DYCKZOWSKI, R	1649	0	1	KUSUMOTO, R	0 0 0
3	HAMMOND, M	1347	0	1	NAUGHTON, T	0 0 0
4	ZOELLNER, J	1225	0	1	MANIA, B	0 0 0
5	HILLIARD, J	0	0	1	WEISSKOPF, J	0 0 0
6		0	0	0F	MARGULIS, A	0 0 1F

21-OCT-92 CHICAGO POST OFFICE 6 CHICAGO MERC. EXCH. 0
 ROUND 2

BD		RATINGS	SCORE		RATINGS	SCORE
1	INUMERABLE, F	2193	9	1	FEIDEL, J	1940 -9 0
2	MARCOWKA, R	1988	2	1	SULLIVAN, C	1533 -3 0
3	COOPER, W	1670	2	1	BAKER, LR	1157 -2 0
4	PETWAY, L	1484	9	1	RUDDY, J	1241 -3 0
5	HOWARD, W	1332	0	1F	GAVIN, L	1216 0 0F
6	GRIESMEYER, W	1394	0	1	LUBERSHANE, S	0 0 0

28-OCT-92 AMOCO CORP. 3.5 CONTINENTAL BANK 2.5
 ROUND 2

BD		RATINGS	SCORE		RATINGS	SCORE
1	HODINA, J	2076	7	1	PARAOAN, E	1781 -7 0
2	ATKINSON, J	1781	14	1	DYCKOWSKI, R	1649-14 0
3	KRULL, E	1397	5	.5	SIEGEL, R	1474 -5 .5
4	HAMILTON, L	1401	0	1F	PATEL, R	1426 0 0F
5	HAMPER, P	0	0	0	HAMMOND, M	1347 0 1
6	BAER, M	0	0	0	HILLIARD, J	0 0 1

28-OCT-92 COLUMBIA COLLEGE 1 CHICAGO RES. & TRDG. 5
 ROUND 3

BD		RATINGS	SCORE		RATINGS	SCORE
1	MCALISTER, K	1953	-8	0	JASAITIS, A	2230 8 1
2	BURDICK, S	1604	-2	0	FRIESEMA, W	2136 2 1
3	KOSTECKA, K	1561	-17	0	DENG, J	1645 17 1
4	HERNANDEZ, DD	1501	12	1	BERNARD, D	1324-12 0
5	TURNER, R	1229	0	0	CIMMARRUSTI, A	0 0 1
6	BRANCH, Y	1292	0	0	SIMS, B	0 0 1
7	SPECK, D	1317	0	1	JONES, MARC	0 0 0 (COLUM)

28-OCT-92 HULL TRADING CO. 3 CTA RAIL 3
 ROUND 2

BD		RATINGS	SCORE		RATINGS	SCORE
1	KUSUMOTO, R	0	0	0	MATTHEWS, J	1525 0 1
2	NAUGHTON, T	0	0	0	ABRAHAM, T	1503 0 1
3	WEISSKOPF, J	0	0	1	JARRETT, T	0 0 0
4	MANIA, B	0	0	1	ROJAS, R	0 0 0
5	RAFFERTY, M	0	0	0	WILLIAMS, J	0 0 1
6	MARGULIS, A	0	0	1	VAN OTRIVE, R	0 0 0

28-OCT-92 ALUMNI CENTRAL 2 CHICAGO POST OFFICE 4
 ROUND 6

BD		RATINGS	SCORE		RATINGS	SCORE
1	ALFARO, C	2118	0	0F	INUMERABLE, F	2202 0 1F
2	FRANEK, M	1918	27	1	MAREMA, D	1985-27 0
3	BRONFELD, A	1824	-12	0	MARCOWKA, R	1990 8 1
4	LITVINAS, A	1706	-16	0	COOPER, W	1672 25 1
5	DAVIDSON, M	1669	12	1	PETWAY, L	1493-12 0
6	BROTSOS, J	1564	-24	0	HOWARD, W	1332 36 1

04-NOV-92 CHICAGO RES. & TRDG. 1.5 CHICAGO MERC. EXCH. 1.5
 ROUND 4

BD	RATINGS	SCORE	RATINGS	SCORE
1 JASAITIS, A	2238-16	.5	ZEIDEL, J	1931 16 .5
2 FRIESEMA, W	2138 1	1	FRANK, M	1730 -1 0
3 BARGERSTOCK, D	1933 1	1	SULLIVAN, C	1530 -4 0
4 DENG, J	1662 6	1	COTE, J	1322 -6 0
5 CIMMARRUSTI, A	0 0	0	BAKER, LR	1155 0 1
6 SIMS, B	0 0	1	LUBERSHANE, S	0 0 0

11-NOV-92 CTA RAIL 2 COLUMBIA COLLEGE 4
 ROUND 4

BD	RATINGS	SCORE	RATINGS	SCORE
1 MATTHEWS, J	1525 -6	0	MCALISTER, K	1945 6 1
2 ABRAHAM, T	1503 29	1	BURDICK, S	1602-29 0
3 WILLIAMS, J	0 0	0	KOSTECKA, K	1544 0 1
4 JARRETT, T	0 0	1	HERNANDEZ, DD	1513 0 0
5 NOWAK, W	0 0	0	BRANCH, Y	1292 0 1
6 ROJAS, R	0 0	0	SPECK, D	1317 0 1
(COLUM) 7 JONES, MARC	0 0	1	TURNER, R	1229 0 0

12-NOV-92 CONTINENTAL BANK 0 CHICAGO RES. & TRDG. 6
 ROUND 5

BD	RATINGS	SCORE	RATINGS	SCORE
1 FRAATS, D	1863 -5	0	JASAITIS, A	2222 5 1
2 PARAOAN, E	1774 -5	0	FRIESEMA, W	2142 5 1
3 DYCZKOWSKI, R	1635 -6	0	LOSOFF, A	1964 6 1
4 ZOELLNER, J	1225 -1	0	BARGERSTOCK, D	1937 1 1
5 HILLIARD, J	0 0	0	DENG, J	1668 0 1
6 GANSER, A	0 0	0	CIMMARRUSTI, A	0 0 1

11-NOV-92 HULL TRADING CO. 4 CTA ROAD 2
 ROUND 4

BD	RATINGS	SCORE	RATINGS	SCORE
1 RANGEL, R	1691 18	1	WILSON, A	1615-18 0
2 KUSUMOTO, R	0 0	0	SLAUGHTER, S	0 0 1
3 NAUGHTON, T	0 0	0	JONES, M	0 0 1
4 WEISSKOPF, J	0 0	1	THOMPSON, T	0 0 0
5 MARGULIS, A	0 0	1	HARRIS, FF	0 0 0
6 WHITTINGTON, D	0 0	1F		0 0 0F

01-DEC-92 CHICAGO RES. & TRDG. 5 AMOCO CORP. 1
 ROUND 6

BD	RATINGS	SCORE	RATINGS	SCORE
1 JASAITIS, A	2227 -9	.5	HODINA, J	2083 9 .5
2 FRIESEMA, W	2147 5	1	ATKINSON, J	1795 -5 0
3 BARGERSTOCK, D	1938-18	.5	WENTLING, C	1591 18 .5
4 DENG, J	1668 8	1	HAMILTON, L	1401 -8 0
5 BERNARD, D	1312 0	1	WEBB, E	0 0 0
6 SIMS, B	0 0	1	KRULL, E	1402 0 0

12-DEC-92 COLUMBIA COLLEGE

1.5 WATA ROAD

1.5

ROUND 5

BD		RATINGS	SCORE		RATINGS	SCORE
1	MCALISTER,K	1951	5	1	WILSON,A	1597 -5 0
2	SPECK,D	1317	0	1	SAUER,C	0 0 0
3	BURDICK,S	1573	0	1	JONES,M	0 0 0
4	HERNANDEZ,DD	1513	0	1	PITTS,R	0 0 0
5	JONES,MARC	0	0	.5	COBLEIGH,M	0 0 .5
6	TURNER,R	1229	0	0	SMITH,J	0 0 1

NORTH DIVISION TOP TEN

CUSI, R	FRANK	2137
REYES, R	SEARS	2294C
STEVANOVIC, M	UOP	2268C
WEBER, L	FRANK	2237
SIWEK, M	KEMPR	2223
MELNIKOV, I	MTRLA	2205
BOLDINGH, E	UOP	2196
GAZMEN, E	FRANK	2183
WONG, P	EXMPL	2181C
HASAN, Y	MTRLA	2178

EAST DIVISION TOP TEN

CZERNIECKI, A	ALUMN	2224C
JASAITIS, A	VRT	2218C
INUMERABLE, F	PSTOF	2202
FRIESEMA, W	VRT	2152
ALFARO, C	ALUMN	2118*
GREGORY, J	PSTOF	2117
HODINA, J	AMCRP	2092
COX, M	ALUMN	2044C
LORING, S	CONBK	2031
SMILEY, R	AMCRP	2024

NEAR WEST DIVISION TOP TEN

LEVINE, D	KNGHT	2381
BENEDEK, R	KNGHT	2226D
JONES, B	ROCKW	2148
WARREN, J	CHRGR	2142T
BERRY, G	KNGHT	2086D
YOUNG, C	KNGHT	1958C
GREEN, D	KNGHT	1869C
RAFACZ, T	ROCKW	1763
DECMAN, S	KNGHT	1736C
STAMM, V	CHRGR	1733D

FAR WEST DIVISION TOP TEN

KOZLOVSKY, M	FERMI	2176
GUIO, J	ROYLS	2163
LUDWIG, T	DRGNS	2155
TEGEL, F	DRGNS	2125D
DORIGO, T	FERMI	2079
SPIEGEL, L	FERMI	2043C
STINSON, M	ROYLS	2028
STOLTZ, B	TYROS	2003
ROSE, K	AMOCO	1970
JACOBS, N	DRGNS	1966C

MOST IMPROVED PLAYERS

HERNANDEZ, DD	COLUM	84
SIWEK, M	KEMPR	63
KANAS, W	JCASE	61
MCALISTER, K	COLUM	55
HOWARD, W	PSTOF	54
CISKO, G	FERMI	52
RANGEL, R	HULL	50
VIGANTS, A	NORTH	47
HICKS, C	DRGNS	46
EUSTACE, D	DRGNS	46

NAME	TEAM	W	L	D	RATING	NAME	TEAM	W	L	D	RATING
ABRAHAM, T	RAIL	2	1	0	1532	CHAN, H	SEARS	0	0	0	1551
ADAMI, S	UOP	1	1	0	0000?	CHARKOVSKY, R	ALUMN	1	1	0	1643*
ALFARO, C	ALUMN	0	1	0	2118*	CHEVERESAN, S	UOP	0	0	0	1390C
ALMAZAN, S	NORTH	0	0	0	1344#	CHIU, H	KNGHT	0	0	0	1653*
ALONSO, G	ROYLS	0	0	0	0000?	CHOUDRY, A	KEMPR	0	0	0	0000?
ANDERSON, CJ	ROYLS	1	2	0	1297*	CHRISTIAN, R	DRGNS	0	0	0	1830C
ATKINSON, J	AMCRP	1	2	0	1790	CIBA, F	SEARS	0	0	2	1385
AUGSBURGER, L	MTRLA	1	0	0	1847	CIESLEK, D	MTRLA	0	0	1	2060
AUSTIN, R	ROYLS	2	0	0	0000?	CIMMARRUSTI, A	CRT	2	1	0	0000?
BAER, M	AMCRP	0	2	0	0000?	CISKO, G	FERMI	3	0	0	1574*
BAKER, B	FLPRO	0	3	1	1074	COBLEIGH, M	ROAD	0	0	1	0000?
BAKER, LR	MERC	1	1	0	1155#	COLE, P	FERMI	0	0	0	0000?
BALASE, E	SEARS	1	0	0	1364*	COLEMAN, O	ROAD	0	0	0	0000?
BARGERSTOCK, D	CRT	4	0	1	1920	COLEMAN, T	FLPRO	0	0	0	0000?
BARGYH, J	COLUM	0	2	0	0000?	COOPER, B	WASTE	0	0	0	0000?
BAURAC, D	KNGHT	2	0	0	1674C	COOPER, W	PSTOF	3	1	0	1697
BEARD, G	ALUMN	0	0	0	1805	COTE, J	MERC	0	1	1	1316*
BECKLEY, S	DRGNS	0	0	0	1475*	COX, M	ALUMN	1	0	0	2044C
BENEDEK, R	KNGHT	2	0	1	2226D	CREWSE, L	EXMPL	1	0	0	2039
BENESA, A	FRANK	1	2	0	2161	CROWE, R	ROYLS	0	0	0	1393*
BENTLEY, D	COLUM	0	0	0	0000?	CUMBERLAND, M	SEARS	1	0	0	0000?
BERNARD, D	CRT	3	1	0	1312	CUMMUTA, P	KEMPR	0	2	0	1372
BERRY, G	KNGHT	3	0	0	2086D	CUSI, R	FRANK	0	0	0	2437
BEZZUBOV, V	FERMI	0	0	0	0000?	CZERNIECKI, A	ALUMN	0	0	0	2224C
BHOJWANI, C	TYROS	1	2	0	1958	DAVIDSON, M	ALUMN	2	0	0	1681*
BHOJWANI, R	INDNS	0	0	0	1710*	DAWSON, J	KNGHT	0	0	1	1435
BISH, D	NORTH	0	0	0	0000?	DEARDORFF, M	FLPRO	0	2	1	0000?
BLACKMON, E	ROYLS	2	0	1	1788	DECMAN, S	KNGHT	2	1	0	1736C
BLAZIE, J	TYROS	0	2	1	1850	DENG, J	CRT	4	0	0	1676*
BLOEDOW, P	KEMPR	0	2	1	1469C	DEO, D	KEMPR	1	2	0	0000?
BLOOM, B	EXMPL	2	0	0	2083	DEWITT, G	ROCKW	2	1	0	1413C
BOLDINGH, E	UOP	3	1	0	2196	DEZONNO, T	ROCKW	2	2	0	1162*
BOOKER, G	RADIO	1	1	0	1373#	DIAZ, P	NORTH	1	1	1	2028
BRADY, R	CHRGR	0	2	0	1282*	DOBR, K	CHRGR	1	3	0	1520T
BRANCH, Y	COLUM	1	3	0	1292*	DOBROVOLNY, C	ROYLS	1	0	2	1921
BRIONES, M	UOP	1	0	0	1694C	DONNA, D	MTRLA	0	0	0	0000?
BROCKETT, M	SEARS	1	0	1	1809	DORIGO, T	FERMI	0	0	2	2079
BRONFELD, A	ALUMN	0	1	0	1812	DUNCAN, T	MTRLA	0	0	0	0000?
BROTSOS, J	ALUMN	1	1	0	1540D	DURKEE, D	DRGNS	2	0	1	1776C
BROWN, R	ROYLS	0	0	0	0000?	DYCKOWSKI, R	CONBK	1	3	0	1629*
BROZOVICH, J	TYROS	0	1	2	1738C	EDWARDS, S	EXMPL	0	0	0	1236
BUCHANAN, R	ALUMN	0	0	0	1464C	EFRON, D	ROCKW	1	0	0	1575
BUERGER, E	UOP	1	3	0	2039D	ELEK, G	NORTH	0	0	0	994*
BURDICK, S	COLUM	1	4	0	1573	ELIASOFF, D	WASTE	0	0	0	0000?
BURIAN, D	NORTH	0	3	0	1657C	ELLERY, G	RADIO	0	0	0	1487*
CAPAGATTI, A	ROCKW	0	0	0	0000?	ERLENBORN, M	AWEST	0	0	0	1456*
CARTER, D	JCASE	0	1	0	1074*	EUSTACE, D	DRGNS	2	0	1	1494
CARTER, L	PSTOF	0	0	0	1528	FAHRENHOLTZ, S	MTRLA	1	1	0	1727*
CEASE, H	FERMI	0	0	0	0000?	FELDMAN, A	FLPRO	0	3	1	1406
CELANDER, C	COLUM	0	0	0	0000?	FIGUEROA, A	UOP	0	0	0	0000?

? - UNRATED

- 5 TO 9 RATED GAMES

* - 10 TO 24 RATED GAMES

C - CENTURY CLUB MEMBER

D - DOUBLE CENTURION

T - TRIPLE CENTURION

Q - QUAD CENTURION

NAME	TEAM	W	L	D	RATING	NAME	TEAM	W	L	D	RATING
FISCHER, P	ROCKW	0	0	0	0000?	HUNG, N	MTRLA	2	0	0	1475#
FLYNN, T	DRGNS	0	0	0	0000?	INUMERABLE, F	PSTOF	2	0	1	2202
FOLEY, T	INDNS	0	0	0	0000?	ISAACS, D	WASTE	0	0	0	0000?
FRAATS, D	CONBK	0	2	0	1858	JACKSON, JJ	ROAD	0	1	0	0000?
FRANEK, M	ALUMN	3	0	0	1945	JACOBS, N	DRGNS	1	0	3	1966C
FRANK, M	MERC	1	1	0	1726*	JADERBERG, J	RADIO	0	0	0	0000?
FRIESEMA, W	CRT	6	0	0	2152	JAKSTAS, K	NORTH	0	0	2	2168C
GABRIELLO, A	AMOCO	0	1	0	0000?	JAMES, V	TYROS	0	0	0	0000?
GAINES, I	FERMI	2	0	1	1770C	JARRETT, T	RAIL	1	1	0	0000?
GANSER, A	CONBK	0	1	0	0000?	JASAITIS, A	CRT	1	0	2	2218C
GASTON, K	JCASE	3	0	0	1339#	JENKINS, M	RADIO	0	1	0	0000?
GAVIN, L	MERC	0	1	0	1216	JONES, B	ROCKW	3	1	0	2148
GAZMEN, E	FRANK	2	0	1	2183	JONES, M	ROAD	1	3	0	0000?
GLICENSTEIN, J	FERMI	0	0	1	1845	JONES, MARC	COLUM	1	1	1	0000?
GLOWACKI, D	RADIO	0	0	0	0000?	KALE, S	JCASE	2	1	0	1548
GOLLA, R	SEARS	0	0	0	2003C	KANAS, W	JCASE	2	0	0	1318
GOLUMBOVSKI, P	NORTH	0	2	1	2099	KARPIERZ, J	TYROS	0	1	1	0000?
GONCHAROFF, N	MTRLA	1	0	0	1778Q	KASSELBAUM, J	COLUM	0	0	0	0000?
GRAFT, D	AWEST	0	0	0	1835	KAUFMAN, M	KEMPR	1	2	0	0000?
GREEN, D	KNGHT	2	0	0	1869C	KEEFE, E	FLPRO	0	1	0	0000?
GREENE, D	ROCKW	0	1	0	0000?	KELLY, S	DRGNS	0	0	0	1258
GREER, D	PSTOF	0	0	0	0000?	KLINFELTER, H	JCASE	1	1	1	1492
GREGORY, J	PSTOF	0	0	0	2117	KOGAN, G	CONBK	0	0	0	1753*
GRIEB, S	KEMPR	0	0	0	0000?	KOSTECKA, K	COLUM	1	2	1	1544
GRIESMEYER, W	PSTOF	3	0	0	1394	KOZLOVSKY, M	FERMI	0	1	0	2176
GRYPARIS, J	MTRLA	0	0	0	1404	KRULL, E	AMCRP	0	1	1	1402
GUILLEN, B	KEMPR	0	1	1	1369#	KUMRO, D	CHRGR	0	3	0	1590D
GUIO, J	ROYLS	1	1	1	2163	KUSUMOTO, R	HULL	0	3	0	0000?
HAHNE, D	ROYLS	1	1	0	1574	LAMBIRIS, J	KEMPR	2	1	0	0000?
HAMILTON, L	AMCRP	0	1	1	1393*	LANG, P	KEMPR	0	0	0	0000?
HAMMOND, M	CONBK	2	1	0	1347*	LASKY, J	RADIO	0	1	3	1439
HAMPER, P	AMCRP	1	1	0	1299#	LASKY, JIM	RADIO	0	0	0	1711#
HARBUZIUK, W	ROCKW	0	0	0	0000?	LASKY, N	RADIO	1	3	0	1400
HARRIS, FF	ROAD	0	3	0	0000?	LATIMER, E	SEARS	0	0	0	2026D
HARRIS, R	FERMI	2	0	1	1550	LEMBERGER, S	CRT	0	0	0	0000?
HASAN, Y	MTRLA	1	0	2	2178	LENDI, L	WASTE	0	0	0	0000?
HASKELL, M	KEMPR	0	1	0	0000?	LEONG, G	KEMPR	1	1	0	2082C
HERMANN, T	WASTE	0	0	0	0000?	LEQUERE, F	KNGHT	0	0	0	1601
HERNANDEZ, DD	COLUM	4	1	0	1513	LEVINE, D	KNGHT	1	0	0	2381
HESS, B	FLPRO	0	3	1	1496	LITVINAS, A	ALUMN	1	1	1	1690C
HICKS, C	DRGNS	2	0	0	1530	LOMONT, C	SEARS	0	1	0	0000?
HILL, R	KNGHT	2	1	0	1703	LORING, S	CONBK	0	0	0	2031
HILLIARD, J	CONBK	2	2	0	0000?	LOSKE, D	INDNS	0	0	0	0000?
HILTON, J	MERC	0	0	0	0000?	LOSOFF, A	CRT	1	0	0	1970
HODINA, J	AMCRP	2	0	1	2092	LUBERSHANE, S	MERC	1	2	0	0000?
HOLM, B	WASTE	0	0	0	1716	LUDWIG, T	DRGNS	1	0	1	2155
HOWARD, W	PSTOF	3	0	0	1368*	MANIA, B	HULL	1	1	0	0000?
HUGHES, L	RAIL	0	0	0	0000?	MANILLA, M	AMOCO	1	1	0	1220#
HUGHES, N	KEMPR	2	0	0	1838C	MARCOWKA, R	PSTOF	3	1	0	1998C
HUMPF, R	RADIO	0	0	0	1293*	MAREMA, D	PSTOF	2	1	0	1958

? - UNRATED

- 5 TO 9 RATED GAMES

* - 10 TO 24 RATED GAMES

C - CENTURY CLUB MEMBER

D - DOUBLE CENTURION

T - TRIPLE CENTURION

Q - QUAD CENTURION

NAME	TEAM	W	L	D	RATING	NAME	TEAM	W	L	D	RATING
MARGULIS, A	HULL	2	0	0	0000?	RACANELLI, F	TOP	1	0	0	0000?
MATTHEWS, J	RAIL	1	2	0	1519	RADAVICIUS, E	CHRGR	1	2	0	1670C
MCALISTER, K	COLUM	3	1	1	1956	RADKE, P	COLUM	0	0	0	0000?
MCCLOUD, E	DRGNS	0	1	0	0000?	RAFACZ, T	ROCKW	3	1	0	1763
MCGRIFF, M	RADIO	0	1	0	1409	RAFACZ, W	ROCKW	1	2	1	1605
MCINTOSH, S	CONBK	0	1	0	1149*	RAFFERTY, M	HULL	0	1	0	0000?
MCNEASE, K	COLUM	0	0	0	0000?	RANGEL, R	HULL	2	0	0	1709
MCPHAIL, C	TYROS	0	0	0	0000?	REHORST, R	FLPRO	0	0	0	0000?
MCQUINN, J	ROCKW	2	1	0	1528	REICHERT, P	NORTH	0	2	0	1669#
MCSMITH, B	COLUM	0	0	0	0000?	REID, C	JCASE	1	1	0	1313
MELNIKOV, I	MTRLA	2	0	1	2205	REVULURI, K	MTRLA	0	0	0	0000?
MICKLICH, F	UOP	3	1	0	1759C	REYES, R	SEARS	1	1	0	2294C
MIKULECKY, B	RADIO	2	1	0	1356	RIEDERER, D	CRT	0	0	0	1116#
MILLER, TT	SEARS	0	2	1	1517*	RINGENBERG, T	AMOCO	0	2	0	1381
MIRANDA, V	FRANK	0	0	0	0000?	RO, D	CRT	0	0	0	1450*
MITCHAM, L	ROCKW	0	1	0	1562*	ROJAS, R	RAIL	0	2	0	0000?
MOHANTY, K	KNGHT	0	0	0	0000?	ROQUE, P	COLUM	0	0	0	0000?
MOKHTAR, M	INDNS	0	0	0	0000?	ROSE, K	AMOCO	0	0	0	1970
MONZANI, A	FLPRO	0	0	0	1751	ROSLEY, D	DRGNS	0	0	0	1816
MORRISON, J	KNGHT	0	0	0	1728	RUDDY, J	MERC	0	1	0	1232*
MORTON, B	SEARS	1	0	0	1549	RZESZUTKO, R	ALUMN	1	0	0	1931
MOSES, J	PSTOF	0	0	0	0000?	SAHLI, E	UOP	1	0	1	1727#
MOTYCKA, R	JCASE	1	0	0	1178	SAJBEL, P	UOP	3	0	1	1739
MURPHY, B	FRANK	0	0	0	0000?	SAJKOWSKI, D	AMOCO	1	0	2	1951
NAUGHTON, T	HULL	0	3	0	0000?	SAMELSON, C	MTRLA	2	1	0	2010C
NELSON, H	CONBK	0	0	0	1960	SANCHEZ, R	FRANK	0	2	0	1411*
NISHIMURA, K	FLPRO	0	3	0	0000?	SANTOS, S	FRANK	0	0	0	0000?
NOWAK, W	RAIL	0	1	0	0000?	SATTERLEE, D	JCASE	1	2	0	1727C
NWABUDE, O	ROYLS	0	3	0	0000?	SAUER, C	ROAD	0	1	0	0000?
O'DELL, DW	RADIO	1	3	0	1593	SCHATTKE, N	AMOCO	0	2	0	0000?
OELHAFEN, A	EXMPL	1	1	0	1289*	SCHWARTZ, M	TYROS	0	2	0	1079*
OGASAWARA, L	ROYLS	1	0	1	1822	SCHWARTZ, S	SEARS	0	1	0	1718C
OGASAWARA, R	MTRLA	0	0	0	1604D	SHAFF, R	TYROS	0	3	0	1553C
OLSEN, A	KEMPR	1	2	1	1463*	SHEU, G	ROYLS	0	1	1	1319*
OLUND, P	MTRLA	0	0	0	1373*	SHIREY, S	KEMPR	0	0	0	0000?
OSTERLUND, R	EXMPL	0	0	0	1976	SIEGEL, R	CONBK	0	0	1	1469
PAAUWE, N	AMOCO	1	1	0	1441	SIMS, B	CRT	3	0	0	0000?
PALMER, S	COLUM	0	0	0	0000?	SIMS, LL	KNGHT	0	0	0	0000?
PAPOUTSIS, G	UOP	0	0	0	0000?	SIWEK, M	KEMPR	3	0	1	2228
PARA, A	FERMI	1	1	0	1612*	SLAUGHTER, S	ROAD	1	0	0	0000?
PARAOAN, E	CONBK	1	3	0	1769	SLUSSER, C	CRT	0	0	0	0000?
PATEL, R	CONBK	0	0	0	1426*	SMILEY, R	AMCRP	0	0	0	2024
PETERS, P	EXMPL	0	0	0	1079*	SMITH, BR	TYROS	0	2	0	1512
PETWAY, L	PSTOF	2	1	0	1481*	SMITH, J	ROAD	1	2	0	0000?
PIAO, T	DRGNS	3	0	0	1470#	SOLLANO, E	FRANK	3	0	0	2003
PIASZYNSKI, J	AMOCO	0	0	0	0000?	SOMBONG, M	CONBK	0	0	0	1725
PITTS, R	ROAD	0	2	0	0000?	SPANGLER, M	AMOCO	0	0	0	1374
POMA, D	AMOCO	0	2	1	1178#	SPECK, D	COLUM	3	1	0	1317
POMA, M	AMOCO	0	1	0	0000?	SPIEGEL, L	FERMI	1	2	0	2043C
PURDLE, D	FRANK	0	1	0	0000?	STAMM, V	CHRGR	1	1	0	1733D

? - UNRATED
- 5 TO 9 RATED GAMES
* - 10 TO 24 RATED GAMES

C - CENTURY CLUB MEMBER
D - DOUBLE CENTURION
T - TRIPLE CENTURION
Q - QUAD CENTURION

NAME	TEAM	W	L	D	RATING	NAME	TEAM	W	L	D	RATING
STEIN, P	RAIL	0	0	0	0000?	VAN, R	RAIL	0	1	0	0000?
STEIN, P	AWEST	0	0	0	2236	VERIVE, J	AWEST	0	0	0	1603#
STELTON, N	AWEST	0	0	0	1373	VIGANTS, A	NORTH	2	0	1	1668
STEVANOVIC, M	UOP	2	1	1	2268C	WALKER, R	FERMI	0	0	0	1368C
STINSON, M	ROYLS	0	0	0	2028	WALLACH, C	MTRLA	1	0	0	2062
STOLTZ, B	TYROS	1	1	0	2003	WALLIN, R	AWEST	0	0	0	1720*
STUHLBARG, D	UOP	0	0	0	1527C	WARD, C	DRGNS	1	2	0	1560D
SUERTH, F	EXMPL	1	0	1	1640C	WARREN, J	CHRGR	1	1	1	2142T
SUH, G	AMOCO	0	0	0	1462#	WEAVER	FLPRO	0	0	0	0000?
SULLIVAN, C	MERC	0	3	0	1526*	WEBB, E	AMCRP	0	1	0	0000?
SULLIVAN, J	EXMPL	1	1	0	2024D	WEBER, L	FRANK	1	1	1	2237
SWIDERSKI, M	CHRGR	0	0	0	1345C	WEISSKOPF, J	HULL	2	1	0	0000?
SZAUKELLIS, W	MTRLA	0	0	0	0000?	WEITZ, R	FLPRO	0	4	0	1774C
TEGEL, F	DRGNS	2	0	1	2125D	WELTER, P	SEARS	2	0	0	0000?
THOMAS, G	TYROS	1	2	0	1462	WENTLING, C	AMCRP	1	0	1	1609
THOMAS, J	CHRGR	0	1	1	1489C	WEST, R	MTRLA	1	0	0	0000?
THOMPSON, J	RAIL	0	1	0	0000?	WHITE, H	JCASE	1	1	0	1683
THOMPSON, R	FLPRO	1	1	0	1079	WHITTINGTON, D	HULL	0	0	0	0000?
THOMPSON, T	ROAD	0	1	0	0000?	WIECHERT, A	UOP	0	1	0	0000?
TOGAMI, P	JCASE	0	0	0	1173*	WILLIAMS, J	RAIL	1	1	0	0000?
TOLPPI, J	WASTE	0	0	0	0000?	WILLIAMSON, A	PSTOF	0	0	0	0000?
TRUSNICH, M	WASTE	0	0	0	0000?	WILSON, A	ROAD	0	3	0	1592
TUKES, W	COLUM	0	0	0	0000?	WILSON, M	SEARS	0	1	0	0000?
TURNER, K	PSTOF	0	0	0	1559	WINGFIELD, L	INDNS	0	0	0	0000?
TURNER, R	COLUM	1	4	0	1229*	WINSTON, H	ALUMN	0	0	0	1982
TURPIN, S	INDNS	0	0	0	1196#	WITHERIDGE, T	WASTE	0	0	0	0000?
TYREE, D	RADIO	0	3	0	0000?	WONG, P	EXMPL	1	0	0	2181C
UNDERWOOD, W	AWEST	0	0	0	1960C	YOUNG, C	KNGHT	0	0	0	1958C
VAN MEER, J	KEMPR	1	0	1	1990	ZEIDEL, J	MERC	0	2	1	1947
VAN OUIRIVE, R	RAIL	0	1	0	0000?	ZOELLNER, J	CONBK	1	1	0	1224
VAN ZILE, C	UOP	1	0	0	1370*						

? - UNRATED
- 5 TO 9 RATED GAMES
* - 10 TO 24 RATED GAMES

C - CENTURY CLUB MEMBER
D - DOUBLE CENTURION
T - TRIPLE CENTURION
Q - QUAD CENTURION